



BEVERLEY BLARNEY

Edition 494 December 2025 No Charge



BEVERLEY STATION ARTS
GALLERY & PLATFORM THEATRE



Free Christmas Party

Saturday 20 December 2025 at the Station

Santa

Face painting

Roaming Elves

Community Choir

Circus skills workshop

Gates open 5pm

Carols at 7.30pm

BYO picnic/drinks

Food truck available



Beverley
Community
Resource
Centre





Minutes of the Monthly Council Meetings – These are available on the shire website. Since February this year the meetings have been digitally recorded which is also uploaded to the shire website.

Wind Farms Local Planning Policy – This is a new planning policy for the Shire of Beverley which seeks to ensure that any proposed wind energy project is developed in a manner that minimises negative impacts and maximises the benefits to the community and the environment. The policy was advertised following the June Council meeting and following a review of the submissions received Council have resolved to proceed and publish notices to this effect as required in the Planning and Development (Local Planning Schemes) Regulations 2015.

Shire Community Grant Programme - The next round of the Shire Community Grant Programme will open in January 2026 if you wish to start working on your applications. Applications close toward the end of January 2026. This is the second round in the grants programme for the 25/26 financial year.

Sporting Facilities – Work on the netball courts is underway and redevelopment of the swimming pool Stage 1 continues. Council looks forward to the completion of both projects which will provide refurbishments to important community facilities. Funding opportunities continue to be investigated that would enable the Shire to progress Stage 2 of the swimming pool redevelopment. Stage 2 includes new change facilities, gym, community space and the entry realigned to the oval area.

Camping on Private Land – The State Government introduced an amendment in 2024 to the Caravan Parks and Camping Grounds Regulations 1997 whereby a person may apply to a local Government for approval to camp on private land for up to 24 months. This was supposedly a solution to assist with the current housing crisis however was without consideration of the health and safety of potential applicants nor guidance to Local Government as to how it should be managed. Council adopted a policy at the October meeting to establish a framework for preparing and considering such applications. The Shire of Esperance are recognised for their assistance.

Various Works Activities – The oval and town lawns have been verti-mowed and fertilised. New turf has been laid at the swimming pool and reticulation completed. The Water Corporation are currently commissioning the annual start up at the reuse treatment plant and this water will be mixed with the shires harvested water for use on the oval. Bridge maintenance continues, most recently on Yenyening Lakes Rd. This maintenance programme of our bridges is a financial challenge however is important for not only the integrity of our many bridges but to also enable access to external funding when upgrades are necessary.

Roe Tourism AGM – The Roe Tourism Association, a collaborative partnership between the Shires of Beverley, Bruce Rock, Corrigin, Kondinin, Kulin, Lake Grace, Narembreen and Quairading, held its AGM at the Cornerstone in Beverley on 17 November. Attendees were very impressed by the main street redevelopment and our Visitor Centre.

Road Safety - With the heavy traffic around over the harvesting period take extra care on the roads and drive to the conditions rather than the speed limit.

Another year almost over! As 2025 draws to a close I'll take the opportunity on behalf of Council and staff to wish our community a Happy and Safe Christmas!

Dee Ridgway
Beverley Shire President

MERRY
Christmas

AND HAPPY NEW YEAR



COMMUNITY GRANTS

2025/26 - ROUND TWO



Application Package on the Shire Website from 5 December 25

Contact the Shire to discuss your project before lodging.

Applications open Monday 5 January 2026.

Applications close Friday 30 January 2026

Media Release: Commonage Hill Trail Project Reaches Key Milestone

The Shire of Beverley is pleased to announce the commencement of the Commonage Hill Trail Project, a significant step forward in enhancing recreational opportunities and active transport options in our region.

This project is proudly **jointly funded by the State Government through the Western Australian Bicycle Network (WABN) Grant and the Shire of Beverley**. The feasibility study is nearing completion, and the next stage will involve inviting community members and the wider public to have their say on the concept design.

Consultants Common Ground, highly regarded trail specialists in Western Australia, have been engaged to shape the vision for the Commonage Hill trail network. Their expertise ensures that the project will be both environmentally sensitive and designed to deliver an exceptional user experience.

The trail was identified in both the Beverley Trails Master Plan and broader regional planning documents and is an exciting project for the community and visitors to our region.

We are proud to partner with the Department of Transport and Major Infrastructure to develop the regional trail and encourage active recreation. Further information and community consultation opportunities will be announced soon.





BEVERLEY AIRSHOW

11 APRIL 2026

beverleyairshow.com.au



WESTERN
AUSTRALIA

WHERE

DREAM

EVENTS

HAPPEN



WESTERN
AUSTRALIA

SHIRE NOTES



Annual General Meeting of Electors

Notice is hereby given that the Annual General Meeting of Electors for the 2024/25 Financial Year will be held in the Function Room at the Cornerstone Building, 141 Vincent Street, Beverley on TUESDAY, 2 DECEMBER 2025, 5:30pm for the meeting to commence at 5:45pm.

Order of Business

1. Adoption of 2024/25 Annual Report
2. General Business

As per Section 5.5 of the Local Government Act 1995 copies of the 2024/25 Annual Report are available on the Shire Website <https://www.beverley.wa.gov.au/documents/2764/annual-report-202425> or from the Shire Administration Office, located at 136 Vincent Street Beverley, during normal office hours.

STEPHEN P GOLLAN
Chief Executive Officer

Council Meetings

The last Council Meeting for 2025 will be on Wednesday 17 December 2025. There will not be another Ordinary Council Meeting until Wednesday 25 February 2026. For the community's information, please find the Ordinary Council Meeting dates for 2026 below. Meetings will commence at 3:00pm in the Civic Centre.

| |
|-------------------------------|
| Ordinary Council Meeting 2026 |
| Wednesday 25 February 2026 |
| Wednesday 25 March 2026 |
| Wednesday 22 April 2026 |
| Wednesday 27 May 2026 |
| Wednesday 24 June 2026 |
| Wednesday 22 July 2026 |
| Wednesday 26 August 2026 |
| Wednesday 23 September 2026 |
| Wednesday 28 October 2026 |
| Wednesday 25 November 2026 |
| Wednesday 16 December 2026 |

SHIRE NOTES



Beverley Refuse Site (Rubbish Tip) - Christmas

Will operate as normal, open Saturday 27th, Sunday 28th and Monday 29th December. The tip will close if a Harvest & Vehicle Movement Ban is called.

Avon Waste Services – Boxing Day

Bin collection will operate as normal on Friday 26th December. Please ensure your rubbish bin goes out on the evening of Thursday 25 December.

Merry Christmas!

The Shire of Beverley Administration Office will close for the Christmas and New Year holiday period at 4pm on Tuesday 23 December 2025 and reopen at 8:30am on Monday 5 January 2026.

Please ensure your Department of Transport licensing requirements are taken care of by 3:00pm, Tuesday 23 December 2025 and remember there is no licensing services until 5 January 2026.

Councillors and Staff at the Shire of Beverley wish everyone a safe and happy festive period, please travel with care on the roads and we look forward to seeing you in 2026.

SHIRE OF BEVERLEY LOCAL PLANNING POLICIES

Pursuant to Clause 4(4) of Schedule 2, Part 2, Division 2 of the *Planning and Development (Local Planning Schemes) Regulations 2015*, notice is hereby given that Council, at its meeting of 29 October 2025 resolved to proceed with the following Local Planning Policies:

- Local Planning Policy: Tree Farms
- Local Planning Policy: Outbuildings
- Local Planning Policy: Wind Farms

A copy of the policies can be obtained during normal business hours at the Shire Offices, 136 Vincent Street, Beverley, and on the Shire's Website at www.beverley.wa.gov.au.

Stephen Gollan
Chief Executive Office



JOY TO THE WORLD



PLEASE JOIN US TO CELEBRATE

CHRISTMAS

At

Beverley Town Hall

136 Vincent Street Beverley, WA

Sunday 21st December 2025

10am

Lunch Served



Beverley Early Years Network

"Working collaboratively to facilitate local opportunities, for 0 – 5yr old children and their families to connect, learn and thrive in our community".



SENIORS WEEK

Smiles and cuddles were shared with seniors joining us in the community playgroup. With the welcoming sunshine, we were able to get messy with painting and outdoor play.

Special thanks to Playgroup WA for the activities and goodie bags for parents to take home.



Giggles and grow

A fun morning celebrating Children's week with Wheatbelt Giggle and Grow! We jumped, bounced, rolled and laughed the whole morning! This event was made possible due to the generous funding support of Meerilinga Children and Community Services Lotterywest Department of Communities Education WA. Big thank you to Shire of Beverley for their help with a venue for our event.



BEVERLEY TOY LIBRARY

TOY OF THE MONTH

Baby play station
Age range: 6 months +



Baby play stations support development by encouraging sensory exploration, motor skill development and cognitive growth through activities like reaching, grasping, and cause and effect play. This baby play station provides a variety of textures to touch, fun colours, contrasting patterns and toys that make noise. It is also a fantastic tool for keeping your little one amused and contained in one location!

This is just one of many toys available to borrow through our amazing Beverley Toy Library at the CRC.



PLAYGROUP UPDATE

The room's been rearranged to better suit little learners—more soft play for movement and a snug nook for reading.



Beverley District High School - Class: Year 1 (1967) to Year 10 (1976) 50-Year Reunion – 10 October 2026 CWA for lunch... and more!

In 2016—over nine years ago—we held a wonderful reunion at the *Beverley CWA*, our old stomping ground for socials... and, for many of us, our first kisses behind the outside dunny!

It was a fabulous day, with **23 classmates** and **6 staff members** (55 including families) attended. We were thrilled to welcome two very special people:

- **Corinne Ford (Fordschmid)**, who travelled from Switzerland, and
- **Ms Rosaleen McCarthy**, who flew in from New Zealand.



The CWA put on a **scrumptious morning tea**, afterwards we wandered across the road to the *Lesser and Greater Town Halls*—where many of us once attended weddings, badminton, repertory club, dance lessons and more. From there we toured the *Beverley District High School*, enjoyed lunch at the *Red Vault*, visited the *Dead-End Museum*, and wrapped up with dinner at the bottom pub. After quite a few drinks (???), eight ladies revealing the identity of their first kiss (and a bit more!)—only to realise some had shared the same bloke... eek!

On display at the CWA were:

- Excerpts from *The Beverley Times* written by our Year 1 teacher, Miss Byrnes, from 1967—when our class had 40 students!
- *The Beverley Times* write-ups on most classmates
- School class photos and group pictures—even a few we're still trying to identify!

Memories and laughter included:

- The mystery of the 1971 time capsule, no one remembers where it was buried, not even the school
- The Southwest high-school trip where ABBA played non-stop on the bus, driving the poor driver mad and wearing the tape out.
- Ms McCarthy's beloved lambs, Desdemona and Esmeralda



Calling all classmates and teachers!

Several classmates who missed out have been asking for another reunion. We had a smaller catch-up at the 2019 Beverley Show, but now—it's time for the big 50th.

We're tracking everyone down again, many we have contact details from the last reunion. Please ensure only one registration per classmate or teacher. A separate Humanitix ticket link will be sent early next year for payment of the CWA meal.

Register an EOI here:

<https://events.humanitix.com/beverley-district-hs-class-yr-1-1967-to-yr-10-1976-50-yr-reunion>

Contact: **Janet McCartney (née Smith of Chocolate Hills)**, now in Albany and loving life!
M: 0401 203 557



Beverley District High School

Independent Public School

"Working in unity to empower individuals to achieve their unique potential."

Beverley DHS sits on the lands of our Noongar people, and we acknowledge them as the traditional custodians of the Ballardong country.

What's coming up in December at Beverley DHS...

- 4th December KPP Christmas Concert
- 5th December Wheatbelt Ball and Year 5 Sleepover
- 15th December Year 6 Graduation
- 16th December Year 10 Graduation
- 17th December End of Year Presentation Evening
- 18th December Pre-Primary Assembly
- 18th December **Last Day of Term** (Christmas Colours)



SPARK Fun Run Success

In November, the whole school community came together to participate in a SPARK Colour Run. This was held as part of a student fundraising drive, to raise money to subsidise the cost of transport to and from excursions. The event was held in honour of Mrs Corinna Thomas, a much loved and missed member of staff who passed away at the beginning of 2025. Mrs Thomas was an advocate for her students and was passionate about providing all students with exciting opportunities, and who was not shy about her love of Park Runs.

We would like to sincerely thank all students, their families, members of the community, and of course the Beverley DHS P&C who supported us in this event! Stay tuned as we finish counting the final amount our incredible students have raised!



SEEKING YOUR SUPPORT

We are seeking family and community support to assist us in celebrating the successes of our incredible students at the

PRESENTATION EVENING

Wednesday, 17th December

If you would like to make a contribution toward the purchase of Book Awards for this event, please get in touch with the school on **9646 2500**.



Beverley District High School

Independent Public School

"Working in unity to empower individuals to achieve their unique potential."

Beverley DHS sits on the lands of our Noongar people, and we acknowledge them as the traditional custodians of the Ballarong country.

Meeting our future Kindy stars!

Each year, Beverley DHS is delighted to welcome a group of bright new faces for our Prindy transition sessions. These sessions give incoming Kindy students the chance to meet their teacher, explore the school environment, and enjoy a gentle introduction to Kindy life.

This term, Mrs Kelly Aaron hosted a lovely group of little learners during their three visits. It was wonderful to see their curiosity and excitement, and we can't wait to welcome them and their families officially to the school next year!



Around the World with Mrs FitzGerald

Mrs FitzGerald led the Year 2/3 class on a dazzling trip around the world during our Week 5 Assembly. Students and families were treated to a whirlwind of movement, from the Gangnam Style groove to a party in the USA, followed by energetic dances through Africa, Europe, and the land Down Under. The Year 1/2 class made a appearance with their very own penguin fashion show, a crowd favourite! Congratulations to all students who received a SPARK Certificate and to those awarded a Certificate of Excellence. Certificates of Excellence are awarded once per term to students who show exceptional academic or community excellence in the classroom or the playground. What an amazing bunch of successful and aspiring students we have! The Faction totals were also revealed with Forrest coming out on top, closely followed by Dale. There are still 3 weeks to go for students to earn points for their factions!



Wishing all our families a Happy Holidays

We wish all our families a safe and happy holidays and a wonderful start to 2026. We look forward to seeing all students back at school on **Monday, 2nd February 2026**. Merry Christmas.



Successful | Supportive | Sustainable | www.beverleydhs.wa.edu.au | Phone: 96462500



Council Meetings

Meetings are held in the Civic Centre Building. If you are attending a meeting, you must arrive by 2.50pm at the Shire Administration to register your attendance. Meetings Commence at 3.00pm sharp.

Remaining 2025 Meetings

- Wednesday 27 August—
- Tuesday 30 September—
- Wednesday 29 October—
- Wednesday 26 November—
- Wednesday 17 December—

BEVERLEY LIBRARY

Opening Hours

**Monday to Friday
9.00am - 4.30pm**

Beverley Cornerstone
141 Vincent Street



Please Be A Responsible Dog Owner



Clean Up After Your Dog

Beverley Weight Watchers

Need to watch your weight? Now that winter is over, have you added a few more grams to your weight that you don't want? Why not join the Beverley Weight Watchers, the group is a very small group of ladies who enjoy social contact and weigh in each Monday. There are no huge charges to join the group, just \$3 per week. You can have a cup of tea or coffee and enjoy a friendly chat. You won't be embarrassed if you have added a few grams only encouragement to lose them. Feel free to come along on a **Monday morning at 9.30am at the CRC** and meet our ladies. Even losing the smallest amount can spur you on.

Take the opportunity to join in gentle activity aimed at general fitness and falls prevention.

Stay Active

with the
Beverley Everlastings

Date: Tuesdays
Time: 9:00am
Place: Beverley Recreation Centre
Cost: \$1



Beverley Line Dancers
Thursday mornings in the Town Hall
9:30 – 12:00
\$5 – including refreshments



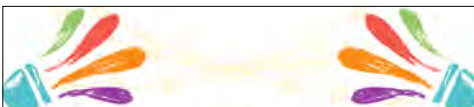
Enquires to
Jan 0429 952 177

Beverley Quilting Group

We meet on Tuesday's at the Masonic Lodge in the back room. We start at 9.30am and finish at 2.00pm.

\$4 donation per session, and **BYO lunch.**

For more information contact Jan Sherwood on 0438 019 510



Beverley Badminton

Notice of AGM & Windup

Thursday, 4th December 2025
AGM & Presentation Lunch will be held at the Hotel Beverley @ 11.30am, all welcome.

We look forward to seeing all our members back in 2026, and welcome new members

For More Information or Enquiries Find us on Facebook or email beverleybaddy@outlook.com or contact Elaine on 0408 903 478



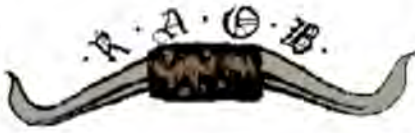
CATHOLIC CHURCH

Beverley Service
8am; every Sunday

Adoration, Rosary & Mass
4.00pm; First Friday of the month; followed by a cuppa

at Beverley Sacred Heart Church,
Lukin St, Beverley

ROYAL ANTEDILUVIAN ORDER OF
BUFFALOES



GLE (Inc.)
QUAIRADING BEVERLEY No. 163

We meet the first Wednesday of every month at
the Masonic Lodge, Hunt Road, Beverley

The objects of our order are Philanthropy and
Good Fellowship

For more information contact
Tom 0419 945 240



**Servicing Beverley, York,
Quairading & surrounding
areas**

At Venustus Mobile Welding & maintenance,
we are committed to providing high-quality
welding services that meet your needs. Our
service truck is equipped with a generator
welder set up for Stick/Mig. We aim to be
reliable to get you back up & going again, we
ensure durability for every project, big or small.

Paul & Ashley -0403055840 & 0459492549
VENUSTUS.HOME@HOTMAIL.COM

Visit the
DEAD FINISH MUSEUM



Oldest building in Beverley, built in 1872 as the "Wheatshaf Inn"

Corner of Great Southern Highway and Morrison Street, Beverley WA

10 Furnished rooms of memorabilia of Beverley town and district.
Featuring the Beverley Room, a large collection of photos and history of
local organisations, school photos and identities.

ADMISSION ADULTS \$5

CHILDREN FREE WHEN ACCOMPANIED BY AN ADULT

Open 11.00am to 3.00pm Sundays or by appointment

Closed from December to early March

Parking available on Morrison Street. AVMCF Venue

Contact: bhsdeadfinish@gmail.com
0417 973 559 - Glenys
0427 411 881 - Joy



Watering Days

To find your watering days, simply take the last digit of
your house or lot number and apply it to the table below

- | | |
|---|----------------------|
| 1 | Wednesday & Saturday |
| 2 | Thursday & Sunday |
| 3 | Friday & Monday |
| 4 | Saturday & Tuesday |
| 5 | Sunday & Wednesday |
| 6 | Monday & Thursday |
| 7 | Tuesday & Friday |
| 8 | Wednesday & Saturday |
| 9 | Thursday & Sunday |
| 0 | Friday & Monday |



**BEVERLEY CLAY
TARGET CLUB
2025 SHOOT DATES**

December

7th - Xmas Novelty Shoot

21st - Practice / New Shooters

Beverley Rifle Range Nominations @ 0900
Practice @ 0930
H: 0407 457 427 Shoot Start @ 1000



- ✓ Pasture Fertilisers
- ✓ Cropping Fertilisers
- ✓ Small, Bulk or Top Ups
- ✓ Sheep & Cattle Pellets
- ✓ Bulka Bags Available

Open 6 Days a Week by Appointment

Call 9883 6080 for Bookings

STORYTIME

AN INTERACTIVE 30 MIN SESSION FOR YOUR CHILD
FEATURING SONGS, STORIES AND FUN!

ALL WELCOME!

2025 DATES

27 OCTOBER
24 NOVEMBER

Now on Monday's!

BRING A
FRIEND!

FREE

VENUE:
THE
CORNERSTONE
BUILDING

Join the Early Years Network



beverleyearlyyearsnetwork@gmail.com

**RHYME
TIME**

FREE
Beverley Library

CORNERSTONE
BUILDING
9.30AM

FEEL FREE
TO BRING A
FRIEND

TUESDAY OCTOBER 07
MONDAY NOVEMBER 10
MONDAY DECEMBER 08

Join the Early Years Network

beverleyearlyyearsnetwork@gmail.com

**Farm Overseer
Wanted!**

We're looking for a reliable,
hands-on person to help run
daily farm operations—crops,
livestock, Machinery, gardens

Location: PetTeet Park

Pay: Based on experience

** Full-time or part-time

You'll need:

- Farming know-how
- Leadership skills
- A love for the outdoors

Call Kevin 0407 631 020



Beverley Community Garden

Our garden is transitioning from the winter veggies to the summer veggies and soon we will have some Tomatoes, Basil, Zucchini and cucumbers. But don't despair, we still have plenty of goodies to fill you baskets with. We are also selling off our succulents in pots for just \$3 so come on down this month and grab a bargain.

Once again we thank those that have visited our garden and seeing the familiar faces of our regular customers has been awesome..

We still have plenty of beetroot, rhubarb and silver beets as well as a large assortment of herbs that have been well received by our customers.

Our National Community Garden day was a huge success with many people enjoying our morning tea. We sold a good number of baskets and plants. Congratulations to Glenys Petchell for winning our raffle. We hope those items are being useful to you and your garden.

Once again a big Thank you to those who have donated their 10cent Recyclables. The money raised from this venture, gives us the ability to ensure the garden is at its best to provide a place the community and visitors to Beverley to enjoy. Our new bins are being used and are proving to be a great advantage in getting the process of sorting minimised.

We have had a new supply of hay that we use to mulch our garden. Thank you David and Fina from the Feed Lot at Top Beverley rd for the donation of such a much needed resource to ensure our garden is well hydrated in the upcoming hotter months. This of course needs to be delivered and we extend our thank you to Ken for giving up his time to get this to our garden and ready for use.

The Beverley Community Garden relies on the community involvement to be able to provide a relaxing, nourishing, informative, friendly environment and sincerely gives thanks to those who provide their time, donations, and support.



Primary Health Services

Available to the community of Beverley

Child Health Nurse - 9690 1320

To make an appointment, Northam Hospital Admin Staff will assist you in setting an appointment time, which will be, on most occasions, a Monday. Northam also provide Child Development Services via referral - 9690 1320

School Health - 9641 0200

Dietetics - 9690 1320

Occupational Therapy - 0429 466 224

Physiotherapy

A doctors referral is required - please send all referrals to PO Box 312 Northam WA 6401. Clients will be acknowledged with a letter informing them of the approximate wait time.

Social Work - 9690 1320

Speech Pathology - 9690 1320

These services are provided by WA Country Health Service and are free of charge. If you have any concerns about your own health or your child's health and development, please phone the relevant health professional to discuss your concerns.

Alternatively, you can speak to the Child Health or School Health Nurse, or your GP, to discuss your concerns and to determine the most appropriate referral.

Avon & Central Primary Health Promoting Healthy Lifestyles.



Government of Western Australia
WA Country Health Service



Beverley Landfill Site Opening Hours

Saturday
8.00am – 4.00pm

Sunday
8.00am – 4.00pm

Monday**
8.00am – 3.30pm

****Please Note:
EARLIER CLOSING TIME**

CLOSED
**Christmas Day, Boxing Day, New
Years Day & Total Harvest Ban Days**

Water supply in a bushfire

This information could save your life



While leaving high-risk bushfires is the safest option, if you plan to stay and defend your home, you must have an **INDEPENDENT** water supply and pumping capability. This typically requires water tanks of at least 20,000 litres, pump and generator.

This is required as mains water supply and pressure cannot be guaranteed during a bushfire due to the risk of power cuts, fire damage and extreme demand.

Use the Department of Fire and Emergency Services resources to develop your personal bushfire plan: mybushfireplan.wa.gov.au You can also download the My Bushfire Plan app via the App Store or Google Play to access your bushfire plan anytime - even without an internet connection.

To support bushfire plans, if you have groundwater bore access to surface water, you can take and store emergency water without it counting against your annual entitlement. For more information on this, and for the location of emergency bushfire water supplies in dryland agricultural areas, visit the Department of Water and Environmental Regulation website.

Drinking water

We recommend you keep a supply of drinking water on hand throughout summer in case your water supply is interrupted.

Assistance for customers affected by bushfire

After a bushfire, we can assist you with issues such as damaged water meters and payment difficulties. If you have been affected by bushfire please call us on **13 13 85**.

The Emergency WA website emergency.wa.gov.au provides emergency information and community safety warnings. Call **000** in a life-threatening emergency or the SES **132 500** for emergency assistance.





BEVERLEY CRC | BEVERLEY LIBRARY | BEVERLEY VISITOR CENTRE
CHRISTMAS OPENING HOURS

CLOSED FROM 4.30PM 23 DECEMBER 2025 - REOPENING 9.00AM MONDAY 12 JANUARY 2026

SEASONS GREETINGS

We would like to thank all of the Beverley community for their support in 2025, we wish everyone a merry Christmas and a safe and prosperous New Year. Our team are taking a break for the festive season and we will see you all in 2026.

CHRISTMAS COOK OFF

The annual Christmas Cook Off is back for 2025! Your chance to win a \$200 Kitchen Warehouse voucher. The theme this year is sweet mini tarts, and entries are due by 11.00am on **Wednesday 10 December**. Conditions of entry are: Name and contact details to be clearly written on bottom of plate, 6 mini tarts are the minimum entry. Tart must consist of a base layer and a minimum of one filling. There is no fee to enter the competition. Kitchen Warehouse can be made out to any person of winners choice. Voucher is not redeemable for cash.

CHRISTMAS COOK OFF

WEDNESDAY 10 DECEMBER 2025

WIN \$200 KITCHEN WAREHOUSE VOUCHER

CHRISTMAS THEMED SWEET MINI TARTS

CONDITIONS OF ENTRY
 All entries must be submitted by 11.00am on Wednesday 10 December to Beverley CRC
 Name and contact details to be clearly written on bottom of plate
 6 mini tarts are the minimum entry
 Tart must consist of a base layer and a minimum one filling
 There is no fee to enter the competition
 Kitchen Warehouse can be made out to any person of winners choice
 Voucher is not redeemable for cash


 Proudly supported by


SHOP LOCAL AND WIN



WIN \$200 VOUCHER

FOR A BEVERLEY BUSINESS OF YOUR CHOICE

Spend \$30 or over at any of our local businesses.
 Write your name and contact number on the back of your receipt.
 Place it into the one of the entry boxes located around town.
 Competition starts on Monday 03 November 2025.
 Winner will be drawn on Monday 15 December 2025.
 For full Terms and Conditions contact the team at the CRC.

Proudly supported by







2026

DIRECTORY

Calling out to all community groups, businesses and residents, we are putting together the 2026 edition of the Beverley Directory.

Do you have any changes you would like to make to your address, phone number or advert from the previous directory (2024)?

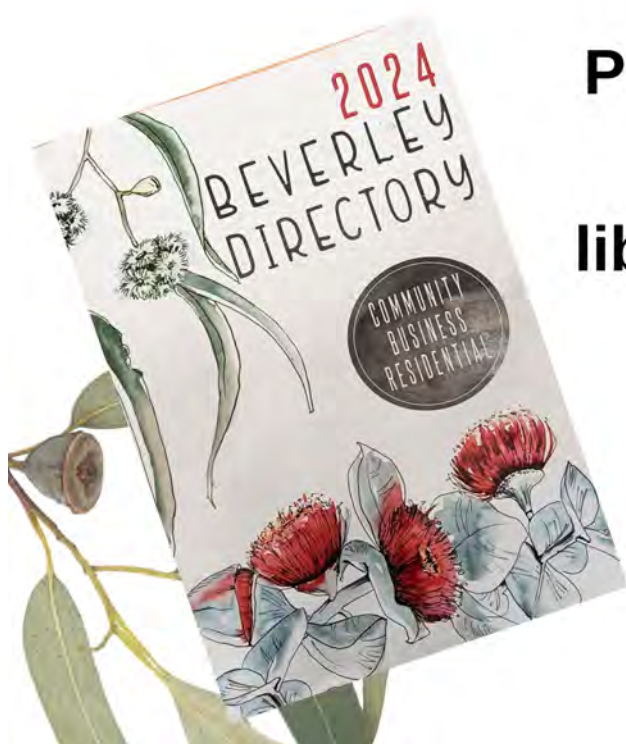
OR

Are you new to town and would like to be listed?

Please forward any updates or additions to:
library@beverleycrc.com.au

OR

Phone 9646 1600



INTRODUCING THE NEW



VINES AESTHETIC CLINIC

COSMETIC INJECTABLES | HAIR GROWTH | LASER THERAPY

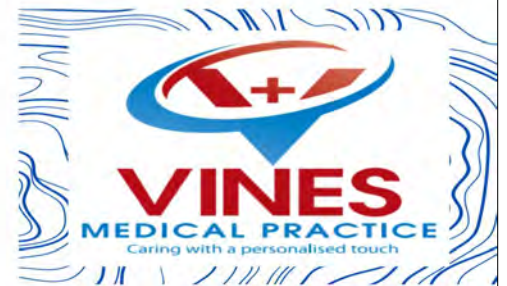


LOCATIONS:

135 VINCENT ST, BEVERLEY 6304 (08) 9646 1125
78 WILLIAMS ST, BROOKTON 6306 (08) 9468 3606

WITHIN

VINES MEDICAL PRACTICE



VINES MEDICAL PRACTICE

Our Team

Dr Adebola (Andre) Oladipo
Dr Esther Oladipo
Dr Zi Low

Practice Nurses

Vitou Norea Yem
Allyson Criddle

Allied Health Team

Jack Doogan - Chiropractor

Opening Hours

9am - 5pm Monday to Friday
9am - 12noon Saturday Telehealth appointments

Contact

135 Vincent Street Beverley
9646 1125 | 9468 3606



[Book Online](#)

www.vinesmedicalpractice.com

Beverley Medical Practice



Located at
"Cullen House"

106 Forrest St, Beverley W.A

Phone 96461241 Fax 61170410

email: beverleymedical@westnet.com.au

Beverley Medical

Monday – Friday

9am – 12:30am

2pm – 4:30pm

Brookton Medical

Tuesdays

9am – 2:30pm

Western Diagnostics Opening times

Tuesday, Wednesday & Thursday

8am – 1:30pm

New Phone number 0476683564

Located at the rear of the medical practice,
no appointment needed.

Your friendly practice team:

Reception: Kris, Amanda and Liz

Practice manager: Dawn

Pathology: Di



Care outside normal opening hours

When the Beverley Medical Practice is closed you can always get medical attention by calling – **Ready Care**

1800 225 523 or calling **Health direct on 1800 022**

222 or by attending the Beverley District hospital,

located in Sewell Street Beverley, where experienced staff will triage the patient and contact the on-call doctor. **Emergencies call 000**



The Practice will close from
MONDAY 22ND DECEMBER

2025 –

AND REOPEN MONDAY 5TH

JANUARY 2026

From all the Doctors and staff at BMP
we wish our patients a safe and Merry
Christmas ☺

western
diagnostic pathology

CHRISTMAS TRADING HOURS

Closed from Monday 22nd December

2025 – Reopen on

6th January 2026.

SENDING LOVE DURING XMAS TO THOSE WHO ARE..



SUFFERING
MENTALLY



GRIEVING A
LOVED ONE



SEPERATED FROM
LOVED ONES



STRUGGLING
FINANCIALLY



FACING FAMILY
TROUBLES



TRYING TO HOLD
IT TOGETHER



BEVERLEY
Retirement Village
Enjoy your golden years

EXPRESSION OF INTEREST

RETIREMENT VILLAGE

BEVERLEY

Beverley Retirement Village is dedicated to redefining retirement living by offering a holistic, sustainable, and community-focused experience.

Highlights

- ✓ Independent Living Units
- ✓ On-Site Wellness & Healthcare Services
- ✓ Community Engagement & Activities
- ✓ Flexible Support Services



Wellness programs



Private units



SOCIAL PROGRAMS



SUPPORT SERVICES



BEVERLEY
Retirement Village
Enjoy your golden years

Contact us



08 9646 1125
0466788945



info@beverleyretirementvillage.com.au



18 Hunt Road
Beverley, 6304

<https://www.beverleyretirementvillage.com.au/>



Ministry in the Parish of Beverley – Brookton for December with Christmas

St Mary's Church, Beverley

| | | |
|--------------------------|------------|---|
| Sunday, 7th December | 9.00 a.m. | Advent 2 - Morning Prayer |
| Friday, 12th December | 7.00 p.m. | Beverley Christmas Carols – Anglican Church |
| Sunday, 14th December | 10.30 a.m. | Advent 3 – Eucharist |
| Sunday, 21st December | 9.00 a.m. | Advent 4- Morning Prayer |
| Wednesday, 24th December | 7.30 p.m. | Christmas Service |
| Sunday, 28th December | 9.00 a.m. | Christmas 1 – Morning Prayer |

St Mark's Church, Brookton

| | | |
|--------------------------|------------|---|
| Sunday, 7th December | 10.30 a.m. | Uniting Church – CWA Rooms |
| Sunday, 14th December | 8.30 a.m. | Advent 3 – Eucharist |
| Friday, 19th December | 7.00 p.m. | Brookton Christmas Carols – Anglican Church |
| Sunday, 21st December | 10.30 a.m. | Uniting Church – CWA Rooms |
| Wednesday, 24th December | 5.30 p.m. | Christmas Service - Eucharist |
| Sunday, 28th December | 9.00 a.m. | Christmas 1 – Morning Prayer |

Special Carol Services

| | | |
|-----------------------|-----------|--|
| Friday, 12th December | 7.00 p.m. | Beverley Combined Churches' Christmas Carols' Service, St Mary's Anglican Church, Beverley |
| Friday, 19th December | 7.00 p.m. | Brookton Combined Churches' Christmas Carols' Service St Mark's Anglican Church, Brookton, Brookton |

Christmas Eve and Christmas Day Services

| | | |
|--------------------------|------------|-------------------------------|
| Wednesday, 24th December | 5.30 p.m. | St Mark's Church, Brookton |
| Wednesday, 24th December | 7.30 p.m. | St Mary's Church, Beverley |
| Wednesday, 24th December | 11.30 p.m. | Holy Trinity Church, York |
| Thursday, 25th December | 7.00 a.m. | Holy Trinity Church, York |
| Thursday, 25th December | 9.00 a.m. | St Faith's Church, Quairading |

Digital Resources: The Anglican Diocese of Perth "App" is available through the Apple Store and Google Play or the Diocesan website, <https://www.perth.anglican.org/news-and-events/news/app>. The Parish of Beverley-Brookton has its own website <https://beverleybrooktonanglicanparish.org>

Secretary & Treasurer Parish Council – The positions of Secretary and Treasurer of the Parish Council of Beverley-Brookton are vacant. If you might like to be involved in the church and the Community in this way, please contact the Priest-in-Charge, Philip Raymont (0419177178).

Priest-in-Charge: The Rev'd Canon Dr Philip Raymont

Telephone: 0419177178 - Email: revdphilipraymont@outlook.com

Postal Address: P.O. Box 180, York, 6302 - Residential Address: 75 Suburban Road, York

Church Correspondence including St Mary's Society: 64 John Street, Beverley. 6304

Church Website: www.beverleybrooktonanglicanparish.org

On Leave: Philip Raymont will be on leave from Friday, 26th December to Thursday, 2nd January.

BEVERLEY

Est. 1985
STEEL FABRICATION

Hydra Boom

Jenifer, Annette & Staff

wish our customers & the Beverley community

Merry Christmas
& Happy New Year

We look forward to seeing you in the coming year

The workshop will close 20th Dec and reopen on the 12th Jan
Please call the after hours number for gas during this time.

SUPPORT WORKERS NEEDED

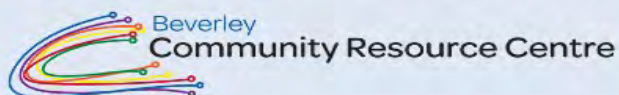


If you're looking for full time, part time, school hours or simply wanting to supplement your pension, there's plenty of flexibility for anyone looking to join our local Mable workforce.

We are looking for registered and enrolled nurses, podiatrists, physiotherapists, carers, cleaners and gardeners.

The 'Staying in Place' program in Beverley aims to keep senior residents in their homes as long as possible with the help from local support workers.

Please contact Samantha Fricker
stayinginplace@beverleycrc.com.au
or 9646 1600 for more information.



Rose Show Results 2025

Section A

1. Red Rose:
1st Jo Sattler | 2nd Jo Sattler
2. Rose Pink:
1st Hazel Martin | 2nd Jennie Bryant
3. Rose Yellow or Gold:
1st Teresa Hill | 2nd Jo Sattler
4. Rose Cream or White:
1st Jo Sattler | 2nd Jo Sattler
5. Rose Fancy Colour:
1st Vicci Newton | 2nd Diane Colebrook
7. Rose Mauve:
No Entries
8. Rose Apricot:
1st Vicci Newton | 2nd Jo Sattler
9. 3 Roses - One Variety: *(One Bud Showing Colour, One Half Open, One Full Bloom)*
1st Teresa Hill | 2nd Pat Parker
10. 6 Roses - Any Colour *(In Separate Bottles)*
1st Jo Sattler | 2nd Jo Sattler
11. Bowl or Vase of Polyanthus or Floribunda Roses:
1st Pat Parker | 2nd Lesley Heal
12. Vase of Any Variety of Roses, Not More than 9 Blooms Any Colour and Rose Foliage:
1st Jo Sattler | 2nd Geraldine Faithful
13. Vase of Full Blown Roses:
1st Jo Sattler | 2nd Jo Sattler



Section B

14. Modern Arrangement With Roses Predominating:
1st Geraldine Faithful | 2nd Vicki Jenkin
15. Arrangement of Roses For Mantlepiece, Any Foliage:
1st Geraldine Faithful | 2nd Vicki Jenkin
16. Arrangement of Roses in an Unusual Container:
1st Vicki Jenkin | 2nd Geraldine Faithful
17. Arrangement of Roses for Table Centre with any Foliage and/or Accessories:
1st Hazel Martin | 2nd Alex McKellar
18. Posy of Roses
1st Geraldine Faithful

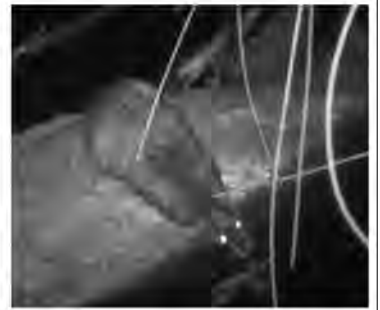
Trophies

- Champion Bowl or Vase: 1st Jo Sattler | 2nd Jo Sattler
Best Single Rose in Section A: 1st Vicki Newton | 2nd Hazel Martin
Best in Section A Class 8 - 10: 1st Jo Sattler | 2nd Colin Willey
Best New Exhibitor: Alex McKellar
Champion in Section B: 1st Hazel Martin | 2nd Alex McKellar
Most Outstanding Exhibit: Alex McKellar





Exciting Developments for Friends of the Dale River



The Friends of the Dale River (FODR) have recently achieved significant recognition for their conservation efforts. At the recent Perth Biodiversity Conference, FODR were honoured as runners-up for their project submission titled "Restoring Wheatbelt Woodlands at the Dale River Reserve." This achievement was accompanied by a \$2,500 prize, which will be directed toward ongoing revegetation work at the Dale River Reserve.

In addition to this award, the project is receiving further financial support from Wheatbelt NRM through the "Carnaby Black Cockatoo" funding initiative. Ground preparation for the 2026 planting season will be managed by the Beverley Shire, ensuring that the reserve is ready for the next stage of revegetation and restoration efforts. Recent camera surveys at Reserve Pool have successfully captured images of the elusive Rakali once again. These observations provide valuable data for ongoing environmental studies and reinforce the importance of habitat restoration in supporting local wildlife. FODR were also successful in their applications for funding from both DPIRD State NRM Programs – Community Stewardship Grants and Feral Cat Management Grants. Significant funds have been awarded for Feral Animal Management Training and Community Awareness Programs and for ongoing Feral Cat Control at the Dale River Reserve and participating surrounding properties. Details of these activities are still being finalised and more information will be available in the coming months.

For more information:- email friendsofthedaleriver@outlook.com or phone Linley 0429 953 800



Beverley River Care Group

As the season shifts to summer, we've planned some dates to give the trees we planted with the High School cadets back in August a good drink! We're meeting on Wednesdays at 8:00am on John Street, just past the school and near the river. If you're free, we'd love for you to join us!

Here are the dates we're planning:

10th December

7th January

4th February

4th March

1st April

If we have another 10mm of rain, we will reschedule. Check in with us on our Facebook page or phone 0412 747 757 for questions and clarification.

We'll also be weeding around the trees and taking out some of the flammable and unattractive Veldt grasses. This will make the area nicer, help the trees and native grasses grow better, and make the firebreak wider. We'll water from a tanker, pump, and two hoses, and it should only take about two hours. Weeding can be done at the same time, and we're hoping to see some real changes over time, not just quick fixes. The more people we have, the better! It's a great way to chat with other helpers while we're working and share this task that benefits our community.



Please wear covered shoes, clothes that cover your legs and arms, a hat, and bring a water bottle and a tiller/garden hoe for the weeds





Available in Northam now

SMILING PEOPLE

- HLTAID009 – Provide Cardiopulmonary Resuscitation \$49
- HLTAID011 – Provide First Aid \$99
- HLTAID014 – Provide Advanced First Aid \$139

BEST PRICE!

Book your course easily through our online calendar at www.smilingpeople.com.au

0430179262
amritasodhi@smilingpeople.com.au
www.smilingpeople.com.au



TRAINING AND ASSESSMENT DELIVERED ON BEHALF OF



Allens Training
 RTO 90909
 Quality Assured Training for over 20 years

HOTEL BEVERLEY

SUNDAY ROAST

\$20

PORK OR LAMB



Your local voice for Beverley!

HERE TO HELP

✉ lachlan.hunter@mp.wa.gov.au

| | |
|------------------------------|--|
| Northam Office | Merredin Office |
| ☎ (08) 9622 2871 | ☎ (08) 9041 1702 |
| 📮 PO Box 92 | 📮 PO Box 66 |
| 📍 185 Fitzgerald St, Northam | 📍 Old Town Hall, Mitchell St, Merredin |

LACHLAN HUNTER MP

MEMBER FOR CENTRAL WHEATBELT



Authorised by L. Hunter, 185 Fitzgerald St, Northam WA 6401



Beverley Township in the 1890s

It is difficult to find evidence of what Beverley looked like in the 1890s. We know the railway came through in the late 1880s & the public buildings such as the old school, the courthouse and the railway station had been erected. Vincent Street had become the main commercial thoroughfare but what was happening in other streets is difficult to ascertain.

Frank Lodge who resided at Yangedine & later East Yangedine wrote his memoirs in the middle of the 20th century. He had arrived from England by boat to Albany & came up to Perth via train in 1891 when he was a 15-year-old boy. This is his first impression of Beverley:

“After Broomehill everyone on the train talked of “When we get to Beverley”. Beverley was the terminus of the G.S. Railway then privately owned, and there we had to stay the night as trains did not run at night. I supposed Beverley to be a town of some significance, perhaps a thousand inhabitants. It was dark when we got there so I saw nothing of it, and did not know till months afterwards that it consisted of 3 hotels, 2 stores, a Post Office and Police Station over ¼ mile from the Railway, and not more than a dozen very scattered houses. Tom and Connie [Frank's cousin & wife] were greeted by the station master James Drake Brockman, by Mr Horace Smith, and one or two others. We made our way carrying our light luggage along the dark road to the Freemasons Hotel about 300 yards from the station. Mr Hawkin Sewell was the proprietor and lived at the hotel. There was a blazing fire in the dining room, and sitting at the long table with Mr Sewell at one end, Mrs Sewell and her four small daughters, Una, Rossy, Connie and Madeline at the other, we were waited on by Mr Sewell's oldest daughters Adelaide and Grace to a plentiful meal of mutton chops or kangaroo and pork, with homemade bread, jam, butter and cream. Later on we went to our bedrooms on the top floor, up a steep ladder-like stairway outside. Hundreds of frogs seemed to be croaking everywhere round the hotel as I went to sleep. Next morning after a good breakfast of porridge, ‘mutton chop or bacon and eggs’ we boarded the train just as day was breaking.”

Later in the memoir he describes the Beverley he recalls it in the 1890s into the 1900s:

“What is now the main street of Beverley was occupied by the Freemasons Hotel, the Railway Station, the old school and schoolmaster's cottage on the one side; on the other Pat Whitely's store opposite the present Coop [now IGA] stores, the single storied Beverley Hotel owned by old Royce, and Ephy Fairhead's new house [still there next to the Dome] where his son lives today. In Hunt Road there was, I think, one house on the York side of the Church and Rectory, an old brick house near where Mr N Brody now lives, Langsford's small brick smithy, the Settler's Arms Hotel kept by old Feeney, nearly opposite was the dwelling house and stores of Mr Horace Smith and behind it the cottage which still stands [now gone] then occupied by Mr R.J. Edwards and family. Nearby was the old brick farmhouse of Mr Thomas Edwards (Policeman Edwards) which still stands [also gone]. In front of it on the other side of the road was the Beverley Pound yard with a thatched shed in it, and the Beverley Show Ground on the corner. On the top of the hill a ¼ mile away was the Post Office and Police Station. The two mounted policemen were Corporal Doherty and Trooper Jack Walsh ...

Edward Langsford lived in the cottage near the railway line [still there in John St] now occupied by his son Harold, and Mr Joe Wansborough and family lived in what is now Forrest Street. With exception of one or two other cottages near the Railway Line the ones mentioned was all of Beverley on West side of the river. There was no bank in Beverley. Later the West Australian Bank opened one day a week, the York manager driving from York. Mr Adam Johnston, I think, was the first to do so.

Canon Groser was the Rector of the Parish, Mr James Drake-Brockman stationmaster of the Government Railway and William Higgins stationmaster of the Great Southern Railway Co owning the line to Albany. Some of the landholders around the district were William, Horace, Hubert and Sam Smith; Edward, Jesse, Joe and Henry Blechynden; Henry Lukin; William, Andrew and Bob Robins, James Broun, Darlot Bros of Yangedine, Thomas Edwards of Mt Pleasant, Charles Edwards of Speldhurst, James Bartram, Andrew Strange, J. Moulton, Eddie Lennard, Earnest Lennard of Wannering, John Fleay of Talbot, Jenkin Thomas, Smith of Dongadilly, C and Gr Heal, David Kilpatrick, W.H. de Lisle, J Potts, Alfred and Charlie Draper, J.P. Dempster of Addington, Edward Doncon of Boyadine, Harry Sewell, Bevan Hamersley, Aubrey and Everitt Hancock, Thomas Willey, Charles Chance, Thomas Jackson; Curtis, Edward and John Powell of Severn Grove, Richard Clayton, Henry Millington, John McGrath. A number of these left worthy descendants, many of whom still live in the Beverley district.

Dr Fred House was the first doctor to reside in Beverley (1891 – 1892). After him came Dr E.H. Schaffer (not fully qualified), Dr S.B. Davies, Dr Blanchard, Dr House a 2nd time, Dr Butler, Dr Richards, Dr Hodgson. Tom Davey was an early builder and contractor. He and his sons built many farm houses, homes and other buildings...

Horace Smith, Storekeeper and Butcher, was the best-known man in Beverley town and gave friendly and kindly help to many struggling settlers and others. He represented Beverley in the Legislative Assembly for some years. A townsman and landholder of later date was Richard Bowyer Smith, known as Stump Jump Smith, the licensee of Railway Refreshment Rooms and Freemasons Hotel. He claimed to be, and probably was, the inventor of the Stump Jump Plough in South Australia, an implement that did so much towards the cultivation of newly cleared forests in Australia. He was no relation to any of the numerous early Smiths of Beverley."

These are two of the earliest street photographs in the Dead Finish Museum collection:



Beverley in the early 20th century – Hunt Road



Vincent St looking east 1907

Another view is found in a Letter to the Editor of the Eastern District Chronicle, York on 17 January 1891:
"SIR, -Beverley town in the past, and the town at the present time. The former contained four or five houses, with about forty souls. At the present time the town is enlarged, and the people are numerous. The Rev. Canon Groser, a little before Christmas, had more than forty children in training to sing Christmas carols.

Beverley is well situated, and surrounded with splendid agricultural land. For building purposes there is plenty of timber and stone, with fine beds of clay, from which the best of bricks are made. The town is a rising one. A railway runs through the middle of it. It has a nice station, which is being enlarged. Close at hand there are nice cottages for the employed. A Roman Catholic Chapel has been built, and recently opened for Divine Service. A few months ago, there were grand doings at the opening of the Mechanics' Institute. A new Rectory has been built on rising ground overlooking the town, and is a large and handsome building. This rising place is the terminus of two railways - the Great Southern and Government lines. It has three hotels, and three stores, well stocked with goods, which can be bought as cheaply as in any town in the country. Then there are the bakers, and butchers shops, with other trades and callings. Yet with all these conveniences one thing is much wanted - a Coffee Palace, which would be a boon. We want one large enough to make up fifty beds, so that people from the Eastern Colonies may have a home-like place to go to. Those who prefer stronger drink than coffee will find good accommodation at the hotels, well stocked with the most approved brands." Signed A.Z.

Contact the Beverley Historical Society at bhsdeadfinish@gmail.com



Beverley Hospital Auxiliary Inc.
Beverley Op Shop

Important Notice

We'll be **closing our doors from 12 December 2025** for the holiday break and will **reopen in February**.

If you're planning to make a donation, please **hold off until we reopen in the new year**.

A huge thank you to our wonderful committee, dedicated volunteers, and amazing community members for all your support – we couldn't do it without you!

If you're interested in volunteering, please get in touch with Valery Seeber on 0427 072 114.

Wishing you all a joyful and relaxing holiday season – we look forward to seeing you in the new year!



Beverley Op Shop

Extra Sort Roster

DECEMBER

Mon 1st - Thurs 4th Issy Freeman

Mon 8th - Thurs 11th Valery Seeber



Beverley Op Shop

December Roster

Friday 5th

Issy Freeman, Geoff Newby-Butt, Lee Storer

Saturday 6th

Christine Brooke, Glenda Burns

Friday 12th

Valery Seeber, Janine Preist, Glenys Petchell

Friday 12th December is our last trading day for 2025 - we will reopen in February 2026

We kindly ask that no donations be made over the summer break.



****Please note:** If you are unable to attend your scheduled day, please arrange your own replacement.

Any concerns please contact Valery Seeber on 0427 072 114



Open Fridays

11am - 2.30pm

Every First Saturday

8.30am - 12pm

A Tribute to Jim Livingstone

There are over 8 billion people in the world and everyone has the potential to be special, and to many, Jim Livingstone was so special. I first got to know Jim in 2016 when he did a job for me on a block I had in Railway Street and from then on, he became a good friend, in fact he was like a father to me even though I was three years older. In the best selling book in all the world there is a story of the good samaritan who helped some one in need, and likewise Jim Livingstone responded to the need of others.

Jim's determination and courage was an inspiration to all who knew him. Life slowly became difficult for Jim, and we all can take a lesson of how he handled the situation he was in. Jim was honest, trust worthy, reliable, and, kept his word, you could depend on him in time of need. Let us all take a lesson from Jim and respond to anyone in need of help, and your world, and my world will be a better place.

John Burnside

THANKS!

Our Sincere Thanks to the Beverley Community

We want to express our heartfelt thanks to Beverley Station Arts, the Beverley community and SPACED for welcoming us during our Artist in Residence at the Station Gallery, where we have been exploring the unique scents of Beverley. We'd also like to thank our producer, Rebecca Luck, for her calm humour and ongoing support.

Additionally, we are grateful to the many community members who have generously shared your stories, knowledge, and time. You have enriched our work.



We will be back in late February to March 2026 to continue collecting the scents of Beverley and begin production of artworks. We look forward to seeing you again soon!
Sue and Tarsh



IGA
LOCAL GROCER
BEVERLEY SUPERMARKET & LIQUOR
Christmas Opening Hours

| | | | |
|--|---------------|-------------------------------------|----------------------|
| Wednesday 24th Christmas Eve | 8.30-5.30 | Sunday 28th | Closed |
| Thursday 25th Christmas Day | Closed | Monday 29th Normal Trade | 8.30-5.30 |
| Friday 26th Boxing Day | Closed | Tuesday 30th Normal Trade | 8.30-5.30 |
| Saturday 27th | Closed | Wednesday 31st New Year's Eve | 8.30-5.30 |
| <i>Please note that due to Logistics and Staffing</i> | | Thursday 1st January New Year's Day | Closed |
| <i>We will NOT be open Saturday 27th December</i> | | Friday 2nd January | Normal Trade Resumes |

We would like to wish all our customers a Happy and safe Christmas and New Year

LOCAL BUSINESSES



AVON VALLEY AG LONG LIVE LOCAL

LOT 502 DE LISLE STREET, BEVERLEY

TRADING HOURS
MON - FRI 8am - 5pm

BARRY FRASER - 0427 940 827
OFFICE - 08 9646 2100



Locals Supporting Locals



Now stocking Milwaukee Tools.



WATERBOY FAIR DINKUM SOLAR PUMPS

ERROL SQUIRE CONTRACTING SERVICES

Solar Pumps: Sales, Service & Installation, Water Supply,
Fencing & Yards, Trenching & Poly Pipe Laying
Servicing Beverley and surrounding districts

ERROL SQUIRE
0438 682 687

Painter Decorators

All repairs & painting

Lyndon & Cameron Grover

0427 661 302

lyndongrover@bigpond.com

Reg: 3941

11000 0000



ADVERTISE YOUR BUSINESS HERE

There are many advertising options for
your business in the Blarney.

blarney@beverley.wa.gov.au

- Plastering
- Gyprock
- Repairs
- Pressure Cleaning Roof
- Spray Painting
- Gutter Replacing



C & B TRANSPORT

DELIVERING GENERAL FREIGHT AND
CHILLER GOODS

3 DAYS PER WEEK OR AS
REQUIRED

TO

BEVERLEY, BROOKTON, and
PINGELLY

FROM

PERTH DEPOT CANNINGVALE
MARKETS

PLEASE CONTACT PAUL BALDWIN
ON

0417 953 968

BIG ENOUGH TO DO THE JOB
SMALL ENOUGH TO CARE



REFINED POWER
EC 15880

Contact@refinedpower.com.au

Oliver Cook

Luke Gollan

0415831110

0458287755

SERVICES INCLUDE –

- ✓ Electrical Installation, Repair & Maintenance
- ✓ Hot Water Systems Repairs & Installs
- ✓ Re-wires & Renovations
- ✓ Split System Air-conditioning Installs
- ✓ Shed Wiring + Industrial Lighting
- ✓ Underground Power
- ✓ Switchboard Upgrades
- ✓ Smoke Alarm & RCD Safety Switches
- ✓ Electrical Health Reports
- ✓ ECO LED Lighting, TV/Data Sockets, Ceiling Fans + More!

Check Our Website – www.refinedpower.com.au

Established in 1997, proudly servicing Beverley and surrounding areas



BEVERLEY GAS + PLUMBING
SERVICES

PL 9723
GF 017690
BFL 3108

**Beverley Gas and Plumbing is your local plumber
for all your plumbing and gas needs.**

- Renovations
- Septic and leach drains
- Gas installs and maintenance
- Hot Water
- Blocked drains
- Dripping taps
- Backflow prevention
- Sewerage conversion

Kodie Fleay
Phone 0418 929 141
Email beverleygandp@gmail.com



TRACEY CAROLYN
CEREMONIES

Tracey Fleay

Marriage & Funeral Celebrant

www.traceycarolynceremonies.com

traceyfleay@outlook.com

0409 481 029



Supply and Installation of all types of air-conditioning and refrigeration systems. Split, Ducted, Evaporative, service and repair to domestic, industrial and commercial.

Throughout the Avon Valley and Wheatbelt, no job too far.

Call Mark for a free quote

Email: valleyaircon@outlook.com

ARC Licence AU42118



Your friendly local dentist in York!

~ Welcoming New Patients ~

Monday to Friday from 9am

129 Avon Terrace, York WA 6302

Ph: (08) 9641 2123

www.avonterracedental.com.au

Needing further information, or to book an appointment? Simply give us a call!



BEVERLEY CHIROPRACTIC CENTRE

Dr Liam Welfar

CORNERSTONE BUILDING

141 Vincent St, Beverley

(Entrance off Dawson St)

08 9646 0523

Back Pain? Neck Pain? Headaches?
Sporting Injuries? Postural Problems?
Call us today to find out how I can help.

Hicaps facility available onsite

DJ YATES

Authentic Heritage Restoration

BRICK AND STONEMASONRY
RESTORATION
AUTHENTIC REPOINTING OF
MORTAR, RISING
DAMP RECTIFIED
PROPERTY
MAINTENANCE



PHONE DAVE
0419 041 542



Unique Strokes W.A. Painting & Decorating

Reg. No. 4236

ROB BAIN

QUALIFIED LOCAL TRADESMEN

For Guaranteed Traditional
Workmanship & Prompt Free Quotes
Phone: 08 9647 2102
Mobile: 0418 904 013



PHOENIX SHEDS

OVER A DECADE EXPERIENCE CREATING
PREMIUM SHEDS
FOR OUR FARMERS

1300 300 993

www.phoenixsheds.com.au
info@phoenixsheds.com.au

OPTOMETRIST
AVAILABLE ON
TUESDAY'S
in Beverley



Peter Tidman OPTOMETRIST

If you are over 65 years of age,
you are entitled to a yearly
bulk billed check-up.

We encourage you to keep
on top of your eye health.

You can find us at the
RSL Hall, 50 Forrest Street, Beverley.

Appointment bookings
Please call Beverley CRC 9646 1600.

BROOKTON PLUMBING

ABN: 37 675 595 336

FOR ALL YOUR
PLUMBING MAINTENANCE
AND GAS FITTING NEEDS

*PLUS SEPTIC WASTE
REMOVAL

PHONE:
SEAN 0413 480 543 or
NATASHA 0422 013 889

PL: 7130 GF: 006947 SWR: T235

Countryside Memorials

Cast Stone

Granite

Marble

Plaques

Added Inscriptions

All Repairs and Restorations



25 YEARS PROFESSIONAL EXPERIENCE

FREE DESIGN AND QUOTE

Servicing All W.A. Country Areas

9696 0466

OXTER SERVICES

www.oxter.com.au

oxter@westnet.com.au

NEED PRACTICAL TRADE ASSISTANCE?

D & M Services

(Design and Manufacturing Services)

Solving a range of practical needs and problems..

Specialising in:

- ✓ Kitchen renovations
- ✓ Shop fitting and modifications
- ✓ Furniture restoration
- ✓ General carpentry
- ✓ Alterations & installations
- ✓ Metal based fabrication
- ✓ Motorhome and Caravan fitouts
- ✓ Pergolas, Decks & Gazebos
- ✓ Designing and planning

Guy Slingerland

0403602335



ATKINSON AG MECHANICAL

THE BEST MECHANICAL SOLUTION

■ TRACTOR SERVICES

■ AUTOELECTRICS & LIGHTING

■ SEEDING EQUIPMENT
PRESEASON/SERVICE

■ HARVESTER INSPECTION
& PRESEASON/SERVICE

■ MOBILE HYDRAULIC HOSES

CALL LUKE: 0448 499 949



FOR ALL YOUR TYRE NEEDS
PRICE BEAT WITH ANY WRITTEN QUOTE!

PRICE MATCH **PRICE MATCH** **PRICE MATCH** **PRICE MATCH** **PRICE MATCH**

BEVERLEYS LARGEST SELECTION OF *ACDelco*
BATTERIES, WITH A 3 YEAR WARRANTY!!

 **24/7 0407 457 427**
AVAILABLE 24/7 FOR EMERGENCIES

 **48 DAWSON ST. BEVERLEY**   

Dawson's

Concrete & Reinforcing

"Your Local Beverley Concreteer"

- Concrete Formwork & Steel Fixing
- Driveways, Shed Floors, Maintenance Pits, Silo Pads, Super Sheds, House Pads
- Over 35 years Experience
- Professional, Reliable Service

Phone for a free quote

SANDY DAWSON
Mobile: 0417 375 221
Email: pameladawson@bigpond.com
FB: facebook.com/dawsonconcrete

SHAZMAC PLUMBING

PROUD TO BE YOUR LOCAL PLUMBER

Plumbing Licence: PL 5829 Gas Fitter Licence: GF 7422 RHL: L100443
ABN: 18 531 685 326

For all your plumbing & gas fitting needs

Phone 0408 189 987
PO BOX 116
BEVERLEY WA 6304
shazmac1@westnet.com.au



NO job is too big or too small.



Fortiz Business Solutions

Registered Tax Agent & Accountant

With over 15 years Professional experience

“ Building your wealth ”

- ✓ Tax Returns for all entities
- ✓ Business Consulting
- ✓ Tax Planning
- ✓ Software Solutions / setup
- ✓ Bookkeeping / Accounting

Open Every Friday
9:00am - 4:30pm
Please call for an appointment

Serving Beverley & surrounding for over 10 years

 0432 426 033  fortizbs@outlook.com
 101 Vincent Street, Beverley WA 6304

KARRADALE LIVESTOCK TRANSPORT
YORK LIVESTOCK TRANSPORT
ABN 64 054 007 721

We service Beverley, Brookton, York
& surrounding districts

Available to transport Sheep & Cattle

No job too big or small

Support the local communities

Member of ALRTA

If you need stock moved, Peter would love to
hear from you - 0428 481 281



BEVERLEY Transport

Your local carrier for over 30 years.

**GRAIN, FERTILISER, LIME, HAY,
WOOL AND SIDE TIPPERS AVAIL-
ABLE**

Garry & Sarah Miller

0428 464 066

admin@beverleytransport.com.au

BEVERLEY STORAGE

Indoor & Outdoor
Furniture,
Cars,
Caravans,
Boats, etc.



0407 564 563

**DRUG &
ALCOHOL
COUNSELLING**

The Wheatbelt Community Drug
Service Team will be visiting Beverley
Hospital fortnightly.
Appointments phone
Jackie Darby 96211 055.

Mulesing Contractor



For all your
Mulesing Requirements
Beverley, York
and surrounding areas

Contact Terry Slade

0427 635 065



FOR HIRE CONTAINER SIDE LIFTER

Containers 20ft & 40ft Sourced & Delivered

**Any modifications you can think of I can quote on
Windows, Roller Doors, Vents, Shelving, PA Doors etc.**

Located in the Beverley Area and Surrounds
for your convenience

Contact Paul 0409 921 728
or email phiggins4@bigpond.com

ADVERTISE YOUR BUSINESS HERE

There are many advertising options for
your business in the Blarney.

blarney@beverley.wa.gov.au

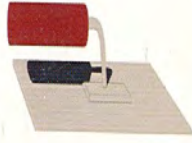
Enquiries can be made to the Shire
Office or to the above email address



- Earthmoving
- Excavation
- Transport
- Bulldozer

0427 718 090

Hillman Walls & Ceiling



ABN: 21 105 606 682

Dean Mann
0410 603 443



BEVERLEY ELECTRICAL SERVICES

BEVERLEY ELECTRICAL SERVICES

EC 006578

Proudly servicing Beverley and surrounding districts since 2010, this locally owned family business can help you with all your Electrical needs

Karl and his team offer

All your General Electrical Requirements PLUS

- Cel-Fi Mobile Boosters
- Quality LED Lighting Solutions for any application
- Split Air Con Installations
- Trenching for underground power
- Quality Solar Systems
- Telephone & Data Cabling

**Call Karl on
9646 1222**

**4 De Lisle Street, Beverley
sales@beverleyelectrical.com.au**

Read Me In Colour

Read the Blarney in Colour on the Shire of Beverley website.

www.beverley.wa.gov.au



northam optical



- Bulk billing to Medicare
- HBF & DVA Provider
- Competitive prices
- Great range of frames & sunglasses
- Locally owned and operated

www.northamoptical.com.au

206 Fitzgerald St Northam WA P 9621 1131
E northam.optical@yahoo.com.au

PURSLOWE
TINETTI
FUNERALS



YOUR
Goodbye
YOUR WAY

Burial - Cremation - Country - Metro - Prepaid

Call us for a Free "Plan Your Goodbye" Booklet



GERALDTON
Murray Simkin
0429 947 919



COOROW
Juliet McDonald
0429 945 332



MOORA
Alana Alexander
0417 490 047



WONGAN HILLS
Saritha Marais
0429 579 541



KELLERBERRIN
Tracey Hobbs
0429 470 007



MERREDIN
Kobus Marais
0427 766 506



NORTHAM
David Armstrong
0447 109 545



WILLIAMS
Mark Stephens
0427 788 521



CORRIGIN
Steve Cooke
0429 934 243



NARROGIN
David Hull
0477 923 684



LAKE GRACE
Brett Cowan
0427 766 506



ESPERANCE (W)
Matt Ryan
0408 092 355



ESPERANCE (E)
Nick Donkin
0428 715 045



BUNBURY
Ralph Papalia
0427 766 535



KOJONUP
Chloe Turner
0447 469 245



ALBANY (E)
Andrew Wallace
0427 063 820



ALBANY (W)
Mark Ladny
0498 223 421



Local Service

Summit Fertilizers Area Managers live and work in your local communities, and understand what matters most for your farm to succeed, backed with over 35 years of agricultural knowledge and recommendations customised for your needs.

For more information on how Summit can partner with you for growing success, please contact your Local Area Manager.

BEVERLEY EARTHMOVING

LOCAL BUSINESS, SERVICING BEVERLEY FOR OVER 15 YEARS



GRADER - BACKHOE - BOBCAT TIP TRUCK

ROAD BUILDING AND MAINTENANCE
HOUSE PADS - SEPTIC SYSTEMS
SAND, GRAVEL, BLUE METAL
FIRE BREAKS - CONTOUR BANKS - ROADED CATCHMENTS

CALL - DAN WILKINSON
0417 093 090

EMAIL - DAN.ZOE@PM.ME

WWW.FACEBOOK.COM/BEVERLEYEARTHMOVING/

FAIRCLOUGH WOOL

- Offering woolgrowers pre shearing starter kits
- Discount wool packs
- Transport of small lines to woolstore
- On farm storage income
- Brokering clips

BUYING ALL MERINO AND XBRED WOOLS WITH SAME DAY SETTLEMENT



Call Mike
Fairclough
0429 635 999

ORDER NOW AND PUT DOLLARS BACK IN YOUR POCKET!!

ORDER EARLY AND BENEFIT FROM ALOSCA'S \$100 PER TON CASH BACK

With over 2.5 MILLION hectares planted with ALOSCA Granules you can count on us!

SUMMER SPECIAL - \$100 PER TON CASH BACK

ALOSCA granules provide flexibility like no other inoculant.

Unlike traditional peat based inoculants which are limited in when they can be applied due to the mortality of the rhizobia, ALOSCA Granules can be sown into dry, unfavourable conditions and remain viable in the soil for months until being activated by the same seasonal rainfall that germinates the seed.



For more information visit our website:
www.alosca.com.au

WHY CHOOSE ALOSCA DRY LEGUME INOCULANTS?

- ✓ Can be dry sown.
- ✓ Can be used with seed dressings that are typically harmful to inoculants.
- ✓ Simple application.
- ✓ Can be blended with fertilisers, seeds or in a third box for ease of application.
- ✓ Can be stored for months in a cool, dry place.
- ✓ No need to mess around with slurries.



Better legume inoculation solutions for modern farming

ORDER NOW - CONTACT YOUR LOCAL STOCKIST OR ALOSCA TECHNOLOGIES ON (08) 6305 0123 ABN: 11 100 815 638

BANJUP FIREARMS

D/L 10026844

Happy to help with all things firearms,
Travelling between Perth and Beverley weekly.

Can assist with...

- Transport
- Storage
- Buying and/or Selling
- Unwanted Firearms
- Serviceability Certificates
- Safety Awareness Tests
- Deceased Estates
- Ammunition



Call Scott on
0433 803 304



LP GAS SUPPLIER IN BEVERLEY!

45kg residential LPG and forklift gas
Kleenheat Gas is now Supagas

Call after hours number on gate for gas supply during Christmas period

**Visit us at
Lot 1, McNeil Street, Beverley
Or call 08 9646 1218**



Beverley C.W.A

Well, it's that time of year again!! Is it just me or did the year go by too fast?

Firstly, the ladies would like to congratulate the York C.W.A on their 100th birthday. A magical milestone that deserves to be celebrated. Congratulations to all the members, past and present, of the York C.W.A on your 100th, we hope you enjoyed the day.

What a year the ladies at the Beverley branch had! We wish all our members who have been unable to attend due to illness our best and thanks for being a member in our special year. To the four members that have been busy in keeping the branch running and continuing our community morning teas, raffles and our celebrations, thank you for all your hard work and hope you all have a well-deserved rest over the holidays. To those who have helped us on many occasions and continue to help us we once again thank you, we really appreciate your help and hope that you all have a restful Christmas.

This year has been busy, raffles, morning teas, catering and of course our birthday celebrations, we thank all of the community for your continued support. To the ladies that come to our morning teas, we thank you and hope you enjoy the morning. We hope to continue next year.

We will be holding our **Christmas Raffle on the 5th and 6th of December and a Cake stall on the 6th**. So, for the last chance this year to win one of our great prizes, either you can keep for yourself or use as that last minute gift, come on down and get your tickets. If you are around on Saturday, then you will be able to buy some of the home-made delicious goodies that will be available. See you there.

Our last event for 2025 will be the **Community Morning Tea on Wednesday the 10th December**. So come along for our Christmas morning Tea.

So, for the last time this year, stay cool, stay safe and enjoy your holidays!
A Merry Christmas and Happy New year to ALL!



Christmas Carol Singing

7.00 p.m., Friday, 12th December

St Mary's Church, Beverley



Come and join in singing your favourite Carols this Christmastide.

An initiative of the Churches in Beverley - Anglican Church, Catholic Church, and Calvary Real Life Church

Off the Rails

As I scroll through thousands of images captured across the years, memories rouse from their slumbers. Places, milestones, outings, kids doing kid-stuff - all have a neurone to trigger.

Many are hard to categorise. They're random snaps, taken in an instant, and kept for colour or some simple meaning only relevant to me.

It's these images that will appear at Beverley Station Arts in December.

Images that give me cause for contemplation or have a story of their own. Some are stories others have shared with me.

I hope you get to enjoy them

BEVERLEY STATION ARTS
120 VINCENT STREET, BEVERLEY WA

OFF THE RAILS

AN EXHIBITION

THIS SERIES BY RICHARD KEELER EXPLORES
STORIES AND THOUGHTS INSPIRED BY IMAGES
TAKEN ACROSS THE YEARS AND THE
PLANET. SOME ARE QUIRKY, SOME
PERSONAL, SOME ARE EXPERIENTIAL.
A FEW BELONG TO OTHERS.

4TH TO 29TH DECEMBER 2025

11:00AM TO 3:00PM

THURSDAY TO SUNDAY EACH WEEK

ALL ARE WELCOME

MONTHLY MARKETS!

First Saturday
of the month



Beverley Community Markets

Gift ideas, fresh produce, crafts, woodwork,
baked goods and preserves plus sausage sizzle.

Date/Time:

06 December 2025

8.00am - 1.00pm

Location:

Beverley Town Hall

**NEW
STALL
HOLDERS!**

Proceeds go to Beverley Junior Sporting Council
For more information contact Jenny Foster 0418 454 571

BEVERLEY AGRICULTURAL MACHINERY MUSEUM.

Avondale farm and the Beverley ag Museum played host to many groups of visitors this past year and Friday November 7 was no exception. A big **thank you** to all the volunteers involved in the starting of the machinery and entertaining our guests.

***Some of the 22
members that
attended from
David Uhe's Rotary
Group.***



***The
majority
of Motor
Neurone
Disease
car rally
group.***

On Saturday November 8, a group of volunteers attended the Museum to carry out restoration, maintenance and greet the numerous visitors for our last official opening this year.

With the increase in temperature comes the possibility a fire outbreak at the Avondale Farm complex, the Museum is closed to the public until March 2026, special viewing arrangements may be made dependant upon the weather conditions. ***Please ring John on 9646 0768 for details.***



St John

Beverley

Beverley St John Ambulance

DECEMBER 2025

000 is the EMERGENCY NUMBER TO CALL IN WESTERN AUSTRALIA FOR AMBULANCE, POLICE & FIRE

So, the year is coming to an end. Crew have all kept their accreditations for the past twelve months and now we have a small break from training until 2026.

Thank you to all the Crew, Committee and Family's for the support you have given to our Community over the past 12 months. Without it we would not have an ambulance service in Beverley.

We have had our end of year BBQ and had a great group of people there to share the night. The food was amazing not to mention the salads and sweets, with the meat being cooked superbly by Ian & Jodie.

As usual we had our humorous awards with Bev Ayles, Lionel, Ian & Jen being the recipients of them with Ian & Jodie getting the Stellar Award.

Of course, Santa arrived to surprise the children with his elf helper.

In conclusion for 2025 we wish everyone a Happy & Safe Christmas, as much as we like seeing you all around town, we really don't want to see you in the back of our green van.

OUR END OF YEAR WINDUP PHOTOS.



THE KING'S BIRTHDAY at AVONDALE FARM

At Avondale Farm, just south of the Homestead, Prince Charles planted a tree on Avondale's official opening day. This occurred on the 16th March 1979 and became one of many appearances by the Prince around WA as it was our 150th Year Celebrations.

Now according to local folklore the actual tree planted did not survive. I am guessing it was replaced, if that is the case, as there is



a majestically tall tree in the centre of the small stand of trees where the auspicious occasion was recorded .

A very dear friend and well known local lady took it upon herself to clear this area by herself when I first became the Caretaker in November 2023. The area was incredibly overgrown with very tall weeds and

was littered with many branches and rocks. It is now a very beautiful and tranquil place to sit on the chairs she has provided and enjoy the surrounding scenery. It was always her plan to hold a High Tea in honour of the Prince who of course is now our King. Unfortunately her efforts did not arouse much interest . One of the National Trust volunteers got wind of this disappointing state of affairs and organised



a celebratory high tea to be held under the trees on Friday 14th November on HRH King Charles actual birthday. Needless to say our local legend was extremely rapt with the plan. She brought a guest and was joined by most of the regular gardening volunteers who usually turn up once a month. We all turned out in our best frocks, (excepting the couple of blokes) , drank from dainty china and did partake of dainty tasty morsels. The weather was perfectly mild and even the flies behaved and kept their distance. Our delighted dame went home tired but very content.

Station Gallery Open Hours: 11am – 3pm Thursday, Friday, Saturday, and Sunday

BECOME A MEMBER! Now's the time to renew/become a member to take advantage of earlybird bookings: www.beverleystationarts.com

 **Artists-in-Residence at the Station**
November Artists - in - Residence



Scents of Beverley

Tarsh Bates and Susan Hauri - Downing have completed their first six week stint of two residences at the Station Gallery bringing to the town a most unusual artform olfactory. Within their well attended eco-sensory community workshops they distilled collected fragrant material to unearth the scents of Beverley. Fascinating stuff! We look forward to their return in March.



December A-i-R

Welcome **Richard Keeler**, writer/photographer, as Artist in Residence at the Station Gallery from 03 to 31 December. Retired from the business world, Richard has written and published one book 'Going The Extra Mile', and is developing two photographic

books currently. One is a compilation of brief snapshot stories, the other a philosophical comparison of what we think we want from life versus what we get. He is also wrestling with a fictional work.

Richard likes to gather unusual stories from peoples' past lives – the stories that are rarely known to their acquaintances – and he will sometimes trade these for a portrait!

PORTRAIT OPPORTUNITY!

For anyone in the community happy to disclose something peculiar/interesting about themselves, Richard can combine it into a personal work for you; not necessarily for publication.

"Off the Rails"...

"Off the Rails"...

"Off the Rails"...

"Off the Rails"...



BEVERLEY STATION ARTS
120 VINCENT STREET, BEVERLEY WA

OFF THE RAILS

AN EXHIBITION

THIS SERIES BY RICHARD KEELER EXPLORES STORIES AND THOUGHTS INSPIRED BY IMAGES TAKEN ACROSS THE YEARS AND THE PLANET. SOME ARE QUIRKY, SOME PERSONAL, SOME ARE EXPERIENTIAL. A FEW BELONG TO OTHERS.

4TH TO 29TH DECEMBER 2025
11:00AM TO 3:00PM
THURSDAY TO SUNDAY EACH WEEK

ALL ARE WELCOME

"Open Evening, all welcome" event - Saturday 13 December. Each piece exhibited comprises an image and brief story. Richard also has a collection of the work in book format which will be available for sale.

Additional information regarding our artists in residence will be available in the weekly Beverley Bulletin, BSA socials, and emails. Or call A-i-R Coordinator Marylou Hutchinson on 0427 085 511.

ARTISTS-in-RESIDENCE for first half 2026

- JANUARY: Timo Rytönen. 1- 27 (Finnish artist -TBC as he is unwell and possibly won't be able to travel)
- FEBRUARY: Tania Davey.
- MARCH: Tarsh and Sue. 25 Feb - March 7
- APRIL: Janice Oliver. 8 - 27
- MAY: Glenda and Murray Blythe. April 29 - June 1
- JUNE: Harry Harrison. 2 - 16
Tich Dixon and Sheila Monahan. June 17 -

PERFORMING ARTS



Beverley Station Singers
There were only six choir members able to attend Dunsborough Songfest but they did us proud!

Kelly is back directing with a new Christmas song list for the Concert on the December 20. And also singing some Christmas cheer at the Community Markets on the 6th. Come join us! **WEDNESDAYS** in the **Green Room** at the Platform Theatre **6.00pm – 7.30pm**. No obligations other than becoming a member of BSA (if you decide to stay - just \$30/year).



Beverley Amateur Dramatics

BAD held their casting call on Sunday 19 October for the next musical (to be revealed soon, but what we can divulge is that it's a comedy and promises to be a load of fun for both cast and audience. The musical will take place 6, 7, 13 & 14 March 2026 (Save the date and book now!)



Rehearsals have begun in earnest!

THE HUMAN HIGHWAY – Playing the Music of Neil Young - SATURDAY 01 NOVEMBER

This certainly was not just another tribute show! *The Human Highway*, led **David Hyams** and **Rose Parker**, paid tribute to all eras of Neil Young's career and it was fantastic!

Beverley Station Arts
GALLERY & PLATFORM THEATRE

Free Christmas Party

Saturday 20 December 2025 at the Station

- Santa
- Face painting
- Roaming Elves
- Community Choir
- Circus skills workshop

Gates open 5pm
Carols at 7.30pm
BYO picnic/drinks
Food truck available

Community Resource Centre
Platform Theatre
Beverley Community Centre

- FREE EVENT **COMMUNITY CHRISTMAS PARTY**
- Gates open to the Platform Theatre 5pm
- BYO picnic/drinks - Food truck available

BOOK NOW! EARLY BIRD TICKETS for CASEY DONOVAN

Join us at the Platform Theatre for an evening of musical theatre and pop with the iconic Casey Donovan!

Scan the QR code to book your tickets

Award-winning performer Casey Donovan will light up the stage in Beverley with her Australian Idol hits, musical theatre classics, and new original songs. Don't miss this inspiring journey from Idol to Icon!

An evening with
CASEY DONOVAN

Sunday 08 March 2026 - Gates open from 6pm
Beverley Platform Theatre
Tickets available online or through Beverley CRC 9646 1600
Licenced Bar - Strictly no BYO - Food Available - Early Bird Tickets

THE 2026 CAST OF BEVERLEY AMATEUR
DRAMATICS PRESENTS

Nonsense

a musical comedy.

Book, Music and Lyrics by **DAN GOGGIN**



BEVERLEY STATION ARTS
GALLERY & PLATFORM THEATRE



FRIDAY 6 MARCH | SATURDAY 7 MARCH
FRIDAY 13 MARCH | SATURDAY 14 MARCH

DOORS OPEN 6.00PM

Beverley Station Platform Theatre
120 Vincent St, Beverley

Tickets \$25 | Consession \$20 | Kids \$10
Available from the Beverley CRC or
scan QR code/visit www.humanitix.com.au

BYO Food | Licenced Bar



BY ARRANGEMENT WITH ORIGIN™ THEATRICAL
ON BEHALF OF SAMUEL FRENCH, INC., A CONCORD THEATRICALS COMPANY



NORTHAM

Harvest Branch Hours 2025



L - R: Northam Parts Manager Todd Adams and Sales Manager Sam Moss along with Group Parts Manager Kevin Dack at the Dowerin Field Days

Tel: (08) 9622 6344

After Hours **Parts: 0427 722 414**

After Hours **Service: 0427 084 218**

After Hours **Sales: 0409 220 482**

Precision Farming Support Line – 0488 844 690

WWW.BOEKEMANS.COM.AU

Boekeman Machinery

Est 1968

HARVEST OPENING HOURS

7:00am – 6:00pm
From 30th of September

SATURDAY MORNINGS

8:00am - 12:00pm
From now until December 2025

Dealer Principal Tim Boekeman – 0427 084 213

Service Manager Ryan Kitt – 0427 084 218

Parts Manager Todd Adams – 0409 209 812

Sales Manager Sam Moss – 0409 220 482

Sales Consultant Harry Nuttall – 0427 084 236

Sales Consultant Josh Boekeman – 0427 776 628

Group Parts Manager Kevin Dack - 0475 985 947

Group PF Manager Conor McGuckian - 0438 905 875

Group GM Sales Dillan Elliott - 0477 740 707

Group GM Operations Ben Boekeman - 0475 969 169





**MERRY CHRISTMAS
AND HAPPY NEW
YEAR**



Beverley Lawn

Tennis Club

News

COURTS: We are very pleased to be back playing on our grass courts! Congratulations to everyone involved in their renovation! We are really noticing the improvements and there has been loads of positive comments about the playing surface.

JUNIORS: Congratulations to all our juniors who represented Beverley with the Central Districts Zone Team in the D'Arcy Slater & Foundation Cup held in Bunbury at the end of October. Representatives from Beverley - Alec Murray, Sienna Shaw, Noah Shaw, Claire Bailey, Abigail Bailey, Cooper Vandenberg, Phoebe Smith, Pippa Murray, Ashlyn Higgins, Hamish Penny, Amelia Copping and Zara Copping.

All reports back were of a wonderful, but busy, tournament! The kids played with exceptional sportsmanship and determination in each game. Congratulations to Phoebe Smith (Division 5 Consolation Winner), Abigail Bailey (Division 2 main draw Runner Up). All 4 girls teams also received medals in each of their team events This is an outstanding achievement for our Zone. Special mention to the co-ordinator Narelle Bailey and the supporting parents who made it all possible.

TOURNAMENT UPDATES: Our Beverley Junior Tournament will take place in early 2026. A new date will be published once confirmed. Our Ladies Open Day will be back next November. We encourage everyone to get out and about and support all the open day opportunities available in area.

EASTER VOLUNTEERS NEEDED: Members and supporters who would like to be involved in catering and event coordination please contact us via email: secretary@beverleylts@gmail.com

Social Tennis - How does it work?

- Turn up! Anytime between 2pm-5pm on a Social Sunday (check the fixtures)
- Pay your ball fees to the captains and they will put your name on the board
- 20 mins games of doubles will be allocated to you
- Afternoon Tea approx 3:30pm - Bring a small plate to share
- when you've had enough, just wipe your name off the board
- Feel free to stay for a drink from the bar after you've finished hitting

Important Info

- New members and visitors are always welcome on Social Sundays. Check out the fixtures on our website.
- Memberships are now due via our ClubSpark page.

<https://play.tennis.com.au/beverleylawntennisclub/Membership/Join>

- Remember to renew to ensure you get all club correspondence

Upcoming Events

- 6th December - Cunderdin Junior Doubles Tournament
- 7th December - Goomalling Ladies & Men's Doubles Open Day
- 21st December - Chris Boladeras Memorial Trophy Tournament and Xmas Party
- Every Sunday (except tournament days) - Social Tennis from 2pm



Beverley Golf Club Inc.
Forrest Street,
Beverley WA 6304
Box 133 Beverley 6304
E: bevgolf@wn.com.au

Summer scroungers have been mainly well supported with some good numbers playing on a Wednesday and Friday.

September's winner of the Fred Bremner Trophy was Terry Woods with a whopping 38pts from the previous month's winner Mike Carthew with 30 pts.

October's Fred Bremner Trophy was won by Steve Johnson with 44 pts and Terry Woods was runner up with 38pts.

A Stableford event was held on Saturday 15th November with John Donovan taking winner honours with 35pts and Patrick Farr runner up with 32 pts.

Sincere thank you to Fred Bremner for his continued support.

Scroungers (6 holes) are held Wednesdays and Fridays gathering at 3.30pm for a 4pm hit off.

Saturday hit off is at 12.00 gathering for a 12.30 hit off for anyone interested.

**BEVERLEY GOLF CLUB
NOTICE OF ANNUAL GENERAL MEETING**

Notice is given that the Annual General Meeting of the Beverley Golf Club will be held on **Sunday 8th February 2026** commencing at 4.00pm.

AGENDA

1. Attendance and Apologies
2. Adoption of previous Annual General Meeting held on the 2nd February 2025
3. Presidents Report
4. Financial Report ending 31st December 2025
5. Election of Office Bearers
6. Election of Patron
7. General Business

If you wish to nominate for any of the committee positions, please email:
bevgolf@wn.com.au



BEVERLEY FOOTBALL AND NETBALL CLUB



BFNC Donations via Loadnet

- Step 1. Go to Loadnet
- Step 2. Click "Nomination"
- Step 3. Click "Transfer"
- Step 4. Select commodity and enter account number 20160602 then click select loads
- Step 5. On the next page enter "tonnes to transfer" out of selected load/loads then click "transfer loads"



DONATION DRIVE

Support the Beverley Football Netball Club this harvest by donating grain—every contribution helps our much-needed fundraising!

Our club continues to move forward and thrive thanks to the incredible support we receive each year from small businesses and farming families.

If anyone would like to donate, it is as simple as delivering as per usual and transferring to the BFNC code via CBH Group's Loadnet.

We truly appreciate everyone who continues to support our wonderful club! We wish everyone a safe and successful harvest. 🌾

COACHING POSITIONS

Beverley Redbacks Football & Netball Club are now seeking expressions of interest for the following coaching positions for

2026

- LEAGUE
- RESERVES

CONTACT US >>>

beverleyfootballclub@gmail.com
or call Blake 0499 166 160
for further information.



CANTEEN MANAGER

2026

REDBACKS - we need a Canteen Manager(s) on our team for the 2026 season (7 home games + 1 final game). This is a paid position!

CONTACT US >>>

beverleyfootballclub@gmail.com
or call Blake 0499 166 160
for further information.



WE WISH ALL OUR SUPPORTERS A HAPPY AND SAFE HARVEST, AND FESTIVE SEASON. SEE YOU IN 2026!

BEVERLEY BOWLING & CROQUET CLUB

CORPORATE / BAREFOOT BOWLS



The Fairclough Wools (Mike & Will) Corporate/Barefoot Bowls competition concluded on Friday 24th October with Bob's team winners. M&M's & Emily's team joint runner-ups.

Although the weather wasn't the best over the 3 weeks the 10 teams of 4 participating enjoyed the competition, and there was plenty of laughs and sighs each week.

There will be another 3-week event held during February 2026. Further details will be in the January 2026 edition of the Blarney.

Thanks to the sponsors of this event, your support is greatly appreciated.

BOWLS

AVBL PENNANT RESULTS FOR BEVERLEY

MEN'S

Results from November Pennants

Beverley Blue lost to York 2-6
Beverley Blue lost to Dowerin 2-6
Beverley Blue lost to Goomalling 2-6

Beverley White defeated York 7-1
Beverley White lost to Meckering 2-6
Beverley White lost to Goomalling 1-7

Beverley Blue currently 4th on AVBL ladder as at 18th November

Beverley White currently 3rd on AVBL ladder as at 18th November

UPCOMING HOME FIXTURES – DECEMBER

Saturday 6th – Beverley White V Dowerin
Friday 12th – Beverley Blue V York – 5.30pm start under lights

LADIES

Results from October & November Pennants

Beverley lost to Northam 1-3
Beverley lost to Quairading 0-4
Beverley lost to Northam Red 0-4
Beverley lost to Goomalling 0-4

Beverley are currently 11th on the AVBL ladder as at 17th November

UPCOMING HOME FIXTURES – DECEMBER

Tuesday 9th – Beverley V Goomalling Blue

If you wish to come along to support the local teams, spectators are more than welcome.

CROQUET

The singles & doubles championships sponsored by Beverley Tyre & Battery have now been completed.

Singles – Winner Vicki Jenkin. Runner Up Sandy Woods

Doubles – Winners Beverley Hoey & Vicki Jenkin. Runners Up Vicci Newton & Janet Eloury

Congratulations to all and special thanks to our sponsor, your support is greatly appreciated.

November saw Beverley Croquet celebrate 8 years. November 2017 started with 4 players. Now there are 16 people playing croquet, which is very challenging.

The Beverley Bowling & Croquet Club members would like to wish everyone a Merry Christmas & a Happy & Prosperous 2026.



Merry Christmas and Happy New Year!
May your heart be as full as your belly on Christmas Day, and may the New Year bless you with good vibes, great naps, and absolutely no judgment for whatever resolutions you *don't* keep.

Beverley Redbacks Cricket Club



Fixtures

Round 7 - Sunday 07th December -
Quairading v Beverley @ Quairading

Round 8 - Sunday 14th December -
Beverley v Seabrook @ Beverley

Round 9 - Sunday 21st December -
York v Beverley @ Beverley

Christmas - New Year - Country Week (6 weeks off)

Round 10 - Saturday 31st January -
Beverley v York @ Beverley



Got a free day on the weekend?

Enjoy a cold beer, some top-tier banter, and a bit of heckling from the sidelines?

Then you're exactly who we're after! 🍻

Our season's underway, and we're recruiting players/mates/legends to hit the pitch — no skill required (in fact, that's a bonus). It's all about laughs, mateship, and maybe the occasional decent play.

100% Banter | 0% Skill Required

Keen for a hit or just to join the fun?

Contact **Captain James Adams** at **0429 461 000**.

LOCAL CLUB/GROUP CONTACTS



| | | |
|--------------------------------------|--|--|
| Adult Horse Riders Social Group | Marie Hammond | 0447 121 014 |
| Anglican Parish of Beverley-Brookton | Priest: Phillip Raymont | 0419 177 178 |
| Beverley & Districts Motorcycle Club | President: Helen Nash General Enquiries: Meaghan Andrews | 0459 589 836 0439 484 353 |
| Beverley Agricultural Society | President: Lorretta Adams Secretary: Bruce Hunt | 0404 044 202 |
| Beverley Amateur Swimming Club | President: Hollie Smith Secretary: Kelly Mann | 0409 299 089 0428 813 822 |
| Beverley Badminton Club | Captain: Jim Hutchinson | 0407 770 686 |
| Beverley Bowling & Croquet Club | President: Sheldon Petchell Ladies Capitan: Maxine Watts Mens Capitan: Brendan Minchin Croquet Captain: Beverley Hoey | 0435 303 225 0458 088 674 0428 371 714 |
| Beverley Community Garden | Beth Lobb Amanda Plumb | 0400 569 971 0403 219 970 |
| Beverley Community Markets | Jenny Foster | 0418 454 571 |
| Beverley CWA | President: Pat Hambly Secretary: | 9646 1481 |
| Beverley DHS P&C | President: Matt Davey | 0429 002 212 |
| Beverley Football & Netball Club | President: Blake O'Meagher Secretary: Dale Wansbrough/Charlie Horrocks League Coach: David Myers Reserves Coach: | 0499 166 160 |
| Beverley Garden & Tree Society | President: Linley Thompson Secretary: Dorothy Sampson | 0429 953 800 0429 989 031 |
| Beverley Golf Club | President: Marc Edwards Mens Capitan: Mark Bickley Ladies Capitan: Jane Murray | |
| Beverley Historical Society | President: Glenys Petchell Secretary: Morag Whitney | 0417 973 559 9646 1075 |
| Beverley Horse & Pony Club | President: Bec Halbert Secretary: Tess Hawke Treasurer: Kerstin Pike Coach Coordinator: Naomi Siebert | 0419 879 310 |
| Beverley Junior Sports | President: Megan Vandenberg Secretary: Narelle Bailey Football Coordinator: Tamara Nixon Netball Coordinator: Emma Davey Cricket Coordinator: Jo Copping Hockey Coordinator: Chaise Sattler | 0438 972 335 0438 972 335 |
| Beverley Lawn Tennis Club | President: Megan Vandenberg Secretary: Chantelle Meade | |
| Beverley Men's Shed | President: Peter Cashmore Vice President: Merv Menz Temp Secretary: | 0427 427 919 0457 447 582 |
| Beverley Naturalists Club | Phyllis Facey | 9646 1469 |
| Beverley Netball Club | President: Jo Copping Secretary: Sam Mearns | 0438 972 335 0417 973 731 |

| | | |
|---------------------------------------|---|------------------------------|
| Beverley Off Road Motor Sports Assoc | Cheryl Simson | 0409 205 551 |
| Beverley Patchwork & Quilters | Denise Hales | 0417 184 563 |
| Beverley Pistol Club | President: H Henderson Secretary: Alex Henderson | 0407 457 427 0407 457 427 |
| Beverley Playgroup | President: Kelly Aaron Secretary: Melissa Blechynden | 0400 772 081 0429 504 963 |
| Beverley Redbacks Hockey Club | Secretary: Ashton Edmonds | 0426 161 943 |
| Beverley River Care Group | Chair: Tim Law Secretary: Di Rickman Treasurer: Bronwyn Nutting | 0412 747 757 |
| Beverley Soaring Society | President: Roger Shead Secretary: Stephen Johnston | 0411 880 122 0409 509 623 |
| Beverley Station Arts | Chair: Jenny Broun Coordinator: Art Exhibiton Secretary: | 0419 040 063 |
| Beverley Amateur Dramatics | Britt Hadlow | 0447 811 267 |
| Beverley Station Arts Singers | Hazel Martin | 0438 843 333 |
| Beverley Toy Library | President: Kelly Mann Secretary: Skye Carlhausen | 0428 779 234 0438 353 634 |
| Clay Target Club | Secretary: H Henderson | 0407 457 427 |
| Cricket Club | President: Stephen Gollan Coach: James Adams | 9646 1200 0429 461 000 |
| Cropping Committee | Secretary: Stephen Gollan | 9646 1200 |
| Dale Community Group | President/Treasurer: Yvonne Hobbs | 0438 370 755 |
| Dale River Sports Ground Committee | Secretary: Georgina Beecroft | 9647 1089 |
| Friends of the Dale River | Linley Thompson Hazel Martin | 0429 953 800 0438 843 333 |
| Beverley OP Shop | President: Gina Adams Secretary: Jo Sims | 0427 461 368 0400 661 256 |
| Rifle Club | | 9641 6061 |
| Royal Antediluvian Order of Buffaloes | | 0419 945 240 |
| Southern Avon Ladies Darts | Monica Camenzuli | 0474 105 242 |
| Men's Darts | Paul Burns | 0458 201 922 |
| St John Ambulance | Chairperson: Ian Frizzell Become a Volunteer: Jenny Rayner Sub Centre IN CASE OF EMERGENCY | 9646 1408 000 |
| Beverley Line Dancers | Jan Turrell | 0429 952 177 |
| York & Districts Archery Club Inc. | President: Albert Gentleman Act/ Secretary: Deborah Gentleman | 0449 678 840 0410 815 003 |

Locally coordinated Beverley Community Resource Centre

Get paid for supporting your community

Staying in Place

In partnership with

InCasa Country
Aged care and Community Services

CARE COMMUNITY

mable

ARE YOU INTERESTED IN BECOMING AN INDEPENDENT SUPPORT WORKER

CONTACT SAM ON 9646 1600

MONTHLY COMMUNITY GROUP *Meeting Times*

| GROUP / CLUB / ASSOCIATION | DAY | TIME | VENUE |
|----------------------------------|--|-------------------------------------|----------------------------------|
| Badminton | Wednesdays | 9.00am | Town Hall |
| Beverley Historical Society | Second Monday <i>Recesses between Dec & March</i> | 1.30pm | Dead Finish Museum |
| Beverley Station Arts Singers | Wednesdays | 6.00pm - 7.30pm | Platform Theatre Green Room |
| Bridge | Monday | | |
| Catholic Church | Sundays | 8.00am | Sacred Heart Church |
| Catholic Church Adoration & Mass | First Friday | 4.00pm | Sacred Heart Church |
| Community Garden | Tuesdays & Saturdays | 8 - 11.30am 9 - 11.30am (Winter) | Community Garden |
| CRC Lego Club | Thursday | | CRC Building |
| Crochet Club | Fortnightly Monday | 2.00pm | One Tree Cafe |
| CWA | Second Wednesday | 9.30am | CWA Hall |
| Dead Finish Museum | Sundays (Mar - Nov) | 11am - 3pm | Dead Finish Museum |
| Early Years Playgroup | Thursday | 9.30 - 11.30am | MOASH Building |
| Early Years Parent Group | Wednesday | 9.00am | Moort Wabiny park |
| Jive Dancing | Fridays | 7.00pm | RSL Hall |
| Line Dancing | Thursdays | 9.30am - 12pm | Town Hall |
| Quilting | Tuesdays | 9.30am - 2.00pm | Masonic Lodge |
| RSL Meetings | First Monday | | RSL Hall |
| RSL Sundowner | Last Sunday | | RSL Hall |
| Station Singers | Wednesdays | 6.00pm | Green Room @ Platform Theatre |
| Stay Active | Tuesdays | 9.00am | Amenities Building |
| Scroungers Golf | Wednesdays & Fridays | | Golf Club |
| Weight Watchers | Monday | | |

Please email blarney@beverley.wa.gov.au to add, update or change these details

December 2025

| Sun | Mon | Tues | Wed | Thurs | Fri | Sat |
|--|----------------------------------|---|--|--|--|---|
| | 1 | 2 | 3 | 4 Playgroup Line Dancing | 5 Op Shop Golf Scroungers Recycle Bin | 6 Community Markets Op Shop Avondale Open Community Garden <i>Jnr Cricket</i> |
| 7 Avondale Open <i>Clay Target</i> Social Tennis <i>Snr Cricket @ Quairading</i> | 8 Crochet Group Rhyme Time | 9 Community Garden Mens Shed Rhyme Time | 10 Badminton <i>CWA Morning Tea</i> Golf Scroungers BEYN Walking Group | 11 Playgroup Line Dancing | 12 Op Shop - Last Day 2025 Golf Scroungers | 13 Avondale Open Community Garden <i>Jnr Cricket</i> |
| 14 Avondale Open Social Tennis <i>Snr Cricket @ Beverley</i> | 15 | 16 Community Garden Mens Shed | 17 Golf Scroungers BEYN Walking Group  <i>Council Meeting</i> | 18 Line Dancing | 19 Op Shop Golf Scroungers Recycle Bin  <i>Blarney DEADLINE</i> | 20 BSA Community Xmas Party Avondale Open Community Garden |
| 21 Avondale Open <i>Clay Target</i> Tennis Tournament & Xmas Party <i>Snr Cricket @ Beverley</i> | 22 Crochet Group | 23 Community Garden Mens Shed <i>Shire Closes for 2025 @ 4pm</i> | 24 Golf Scroungers | 25 Merry Christmas  | 26 Op Shop Golf Scroungers | 27 Avondale Open Community Garden |
| 28 Avondale Open Social Tennis | 29 | 30 Community Garden Mens Shed | 31 Badminton Golf Scroungers  NEW YEAR'S EVE | | Shire Reopens 05 Jan 2026 NO LICENCING BETWEEN 24/12/2025 & 04/01/2026 | |