



BEVERLEY BLARNEY

Edition 451 May 2022 No Charge

AUTUMN TOUR 2022
WESTERN AUSTRALIA
WOODFORDIA INC. PRESENTS

Festival of Small Halls

YOU
COMING TO A SMALL TOWN NEAR

AUTUMN TOUR 27TH APRIL - 15TH MAY 2022

BEVERLEY TOWN HALL - DOORS & BAR OPEN 6.30PM, SHOW STARTS 7.30PM
WEDNESDAY 04 MAY 2022

Award-winning duo, Gina Williams and Guy Ghouse through Noongar language take you on an exceptional musical journey.

Along with Jack Davies, indie-sensation and storyteller from "Jack Davies and the Bush Chooks".

Tickets: Beverley CRC Table bookings call Pauline 0417 983 410
Tickets available online: beverleystationarts.com & festivalofsmallhalls.com
LICENCED EVENT (NO BYO); FOOD AVAILABLE

GINA WILLIAMS AND GUY GHOUSE

JACK DAVIES

GOVERNMENT OF WESTERN AUSTRALIA
Australian Government
RISE Fund

WWW.FESTIVALOFSMALLHALLS.COM



SHIRE OF BEVERLEY PRESIDENT'S REPORT



Vincent Street Streetscape Project

The project unfortunately continues to be delayed by COVID interruptions and now the weather. It is hoped that the IGA and Fig Tree carparks will be sealed during May and the commencement of Footpath works on the Northern side from Forrest Street. The footpath works will include trenching for Street Light power connections, replacing Telstra Pits, removal of pavers and the installation of new concrete footpaths.

Easter 2022

Congratulations to all the various Community Groups who ran successful events over Easter. The town was certainly busy with visitors, many of whom are annual pilgrims to Beverley and many who were first timers that said they'd be back.

ANZAC Day Ceremonies

Congratulations to the Beverley RSL Sub Branch for their running of the Commemorative Services on ANZAC Day, both the Dawn Service and Mid-Morning service were well attended. It is encouraging that this day on the Australian calendar continues to grow annually.

Annual **Electors'** Meeting and Avon River Park Concept Plan

The Annual Electors' meeting was held on Tuesday 5th April with a time of 10:00 start. Council wanted to try a time that might have been more convenient for the community. Unfortunately, attendance did not increase markedly but those who did, engaged with a number of questions. The community should be aware that with many issues arising with Local Government reform, consideration is being given to abolishing Annual Electors' meetings.

Following the Annual Electors' meeting, there was a presentation and discussion on the Avon River Park Concept. The concept was well received at the meeting and positive feedback from those present. A thank you to Martin Pell of Sprout Studios for his work on this plan and the presentation. If you were unable to attend, the plans are available in the Shire Office window or online on the Shire's web page. Public comments are open until Friday 6 May 2022.

Cornerstone Office Three Lease

Office Three in the Cornerstone is available to lease. A discount of 50% for the first three months applies to new tenants. Please contact the Shire Office to view the office or get a copy of the agreement if you are interested.

Community Grants

A reminder to Clubs and Community Groups that the next round of Community Grants will be open in July. Start your planning now to ensure a good application. The grants have been heavily subscribed in recent rounds so Council will be looking for quality applications whose projects/events have maximum benefit to the applicant and community.

Recreation Ground Terrace

The completion of the terrace out the front of the function room is almost complete. Tactile indicators and handrails are to be installed in the coming weeks.

Fire Control and Management

With Summer now past and the risk of fire lessened, it is timely to acknowledge the work and responsibility undertaken by our Fire Control Officers without whom the Shire and community would have difficulty managing. Thank you to you all for taking on these roles and continuing in them. Thank you also to Troy Granville who supports our Officers and his role in liaising with DFES. And of course, thanks to the volunteers who are so quick to respond.

Cr David White
Shire President

For Lease Office Three @ Cornerstone

Please contact the Shire Office for
leasing and viewing information.

9646 1200 or
admin@beverley.wa.gov.au

Excellent location
and modern facilities

Available from 29 November 2021



Beverley Landfill Site Opening Hours

Saturday

8.00am – 4.00pm

Sunday

8.00am – 4.00pm

Monday**

8.00am – 3.30pm

****Please Note:
EARLIER CLOSING TIME**

**CLOSED Christmas Day
and Total Harvest Ban Days**



*Would you like to join us and make a
difference in your local community?*

**We are looking for a range of volunteers to join
us in preparation for the Beverley Agricultural
Show.**

**We rely heavily on volunteers to help coordinate
all aspects of the Beverley Agricultural Show.**

Contact the Sue Martin, our Secretary, on the
below details:
beverleyagsociety@gmail.com or 0427 771 054





Hutton & Northey Sales

Keeping Our Farmers Growing

**Call in to our new Parts
Outlet in Quairading!**

We're at 38 Avon Street

Fully stocked with all your seeding season parts!

- Primary and secondary seeder hose and tube
- Hose and T-Bolt clamps
- High tensile nuts and bolts
- Roller chain
- Bearings - press wheels, shafts, seals and dust caps
- PTO shaft covers
- Ausplow, Flexicoil, Marshall Multispread, and Simplicity parts
- Range of truck air couplers, pressure relief valves, nylon and brass quick-fit air fittings now available

JUST ARRIVED...

Hydraulic hose assembly & repairs now available! 2 wire hose sizes from 1/4" to 1" in stock with huge range of matching fittings. Capable of constructing hoses up to 2" and/or 4wire high pressure hose upon request.

COMING SOON

Full range of Sprayline parts – nozzles, nozzle bodies, strainer filters, gauges, and Banjo fittings.

STORE SPECIALS

LED work lights on sale 60-80% off RRP.

WIN A FISHING TRIP for you and a mate to the Tiwi Islands when you purchase any genuine 20lt or 209lt Case IH Lubricants.

T&C's apply

Contact Us To Find Out How We Can Support You

Merredin Branch

Lot 1313 East
Barrack Street
9041 9500

Mukinbudin Branch

Lot 12 Bent Street
9047 2900

Cunderdin Branch

81 Main Street
9690 3300

Corrigin Branch

5 Walton Street
9063 0100

Quairading Parts Outlet

38 Avon Street
9690 3320

www.hutnorsales.com.au

Beverley Boys in Blue



In the short time I have been O.I.C. at the Beverley police station I have noticed a steady increase in motorist speeding on the Great Southern Highway turning into hunt road in both directions.

These motorists do have (Perth) or other localities number plates however, I have witnessed vehicles with be (Beverley) numbers plates on the vehicle.

I have organised a speed camera to be in the Beverley townsite and deliver consequences for people who are not obeying the road rules. The operator came on 20/04/2022 and a total of 400 vehicles drove through the location in 4 hours. The question is how many were travelling over 60kmph?



The other road issue is the stop signs Hunt Road and Vincent Street and Vincent Street and Forrest Street. The road works are no excuse you still have to stop.

- ⇒ It does not mean slow down to a crawl and nothing coming go through.
- ⇒ It does not mean turning left or right you slow down and see nothing coming you go through.
- ⇒ The 4 wheels on your car must come to a complete stop before commencing through the intersection.

We will be stepping up patrols and targeting these intersections and I have organised Northam traffic and regional traffic to monitor these intersections – you have been warned!!!! Stop at the stop sign.



BEVERLEY POLICE – HOW TO CONTACT US

Life threatening or an emergency dial **000**

For all other matters phone **131 444 or 9646 3333**.

If it's not urgent send us an email Beverley.Police.Station@police.wa.gov.au or leave us a message on twitter [@BeverleyPol](https://twitter.com/BeverleyPol)

Please take care and stay safe.

Sergeant Terry O'DEA and Senior Constable John LINES



PRUNING FRUIT TREES

with Joe Tassone

Tuesday 24 May 2022

10.30am

Beverley Community Garden

Joe from Tass1Trees will be teaching us about fruit trees including:

- Pruning
- Maintenance and care
- Grafting demonstration



Bookings 9646 1600





BEVERLEY HISTORICAL SOCIETY

Beverley Historical Society Dead Finish Museum

bhsdeadfinish@gmail.com

After a delayed start to opening the Museum we are up and running now. With the lovely weather over Easter we had many visitors on Easter Sunday.

As you are all aware the Dead Finish Museum Building is 150 years old this year and will be celebrating over the year with different events. Our big one will be the Back to Beverley weekend with a plaque unveiling.

We are also compiling History of the building and are looking for anyone that may have lived there over the years to contact us with any information regarding their time there, e.g. how long you were there, what rooms were used, memories of the building. We would appreciate any small or large details. Please send via email to bhsdeadfinish@gmail.com.

Our volunteers have started the training to put all records on digital, a very long process but will be great will completed. Naturally it will be a few years down the track. Thanks to the ladies that have offered their time, very much appreciated.

Next Meeting Monday 9th May at 1.30p.m. at the Museum and as always new members are most welcome.



BEVERLEY C.W.A



Well, we had a slow start to the month, but it got busy towards the end; Easter, Kings Park Fashion and getting ready for Mother's Day.

Easter Raffle The raffle was once again a success, thanks to everyone who brought a ticket. Thank you for supporting the local C.W.A. As well as the raffle, we had a cake stall and who doesn't like homemade goodies, yum!

Now for the lucky winners, drum roll please!

1st Prize – Janet Colbung

2nd Prize – Izzy Ochtman

3rd Prize – Dot Amos

4th Prize – Glenys Lane

5th Prize – Jojo

6th Prize – Lyn Murphy

7th Prize – John Fregon

Congratulations to all!!!

Mother's Day We will be holding a raffle on Friday 6th May at the lion's kiosk. Then why not treat them? You're welcome to come down for a delicious morning tea and a fun morning out. And it's free!

Community morning tea will be held on the 4th May starting at 9.30am. come down for a fun morning. We hope that you will be able to come down for an enjoyable morning.

Next meeting will be on 18th May, 9.30am morning tea and 10.00am meeting starts.

UNTIL NEXT TIME THE LADIES AT C.W.A WISH ALL MUMS A WONDERFUL, RELAXING MOTHER'S DAY!!!

Beverley Local Health Advisory Group [LHAG]

The LHAG committee will be meeting in The Town Hall Lounge at 9.30am Wednesday 4th May 2022 to “workshop” an Annual Health Workplan and set in place the health - related issues and resources that affect our community.

The PURPOSE of Local Health Advisory Groups is to provide a forum for:

- ongoing communication and interaction between WA Country Health Staff [WACHS -Dept of Health]
- development of workable solutions for local health service-related issues
- provide ongoing information on Health Services to local consumers

LHAG is an important local committee that has some influence on local health matters.

We welcome members of Beverley community to present views on matters relating to health service quality, access, co-ordination and planning in this local community. Health Service improvement and care procedures are items that should be considered and noted for action in a service planning document.

Our committee needs to be aware of the local priorities that The LHAG Health Work Plan should include.

We are instructed to interact and compliment the Health Work Plans of the District Health Advisory Council Western Wheatbelt [DHAC] where we are represented by Mr Keith Murray as well as those of the Beverley Health Service Manager [HSM] and Shire of Beverley.

To participate:

1. Please send any written comments by Tuesday 3rd May 2022 to:

Secretary, Beverley LHAG,

Mrs Sandy Shaw,

PO Box 98, Beverley WA 6304

Email: lcsshaw@gmail.com or lewandsandy@iinet.net.com

Mob: 0417 703 373

OR

2. Attend the meeting from 9.30-10.00am only, Wednesday 4th May 2022 to present comments, ask questions.

OR

3. Attend the meeting for its entire duration to observe or present comments and contribute to formation of Health Work Plan document.

IF POSSIBLE PLEASE ADVISE SECRETARY PRIOR TO MEETING IF YOU ARE PLANNING TO
ATTEND

Sandy Shaw

Hon Sec. Beverley LHAG


SAVE THE DATE

Spring Back to Beverley

24th & 25th
SEPTEMBER 2022


Celebrating 150th Anniversary of Beverley Road Board,
150th Anniversary of Dead Finish Museum &
other significant Shire of Beverley projects.

Be verley Western Australia
Be very you



Be verley WA
Be very you

The perfect venue for you...



SHIRE OF BEVERLEY

The Art Deco Beverley Town Hall is situated in the Avon Valley; a comfortable drive from Perth city. This venue offers a unique, budget-friendly option for your special day.



Investment

- ✓ \$1,000 for all inclusions as below
- ✓ 1.5 hour journey from Perth

Includes

- ✓ Three Day Access
- ✓ Tables
- ✓ Chairs
- ✓ Cutlery / Crockery
- ✓ AV System / Projector
- ✓ Commercial Kitchen
- ✓ Bar Facility
- ✓ 150+ Person Capacity
- ✓ Main Hall
- ✓ Lesser Hall
- ✓ Dressing Room

The Beverley Town Hall Experience...




Standard seating is different to that shown

Photo Inspiration

- ✓ Yennying Lakes
- ✓ Country Peak
- ✓ Vampire Jets (Great Southern Hwy & Lukin Street)
- ✓ Cornerstone Building
- ✓ James Giddy Street Art
- ✓ Station Art Gallery & Platform Theatre
- ✓ Avondale - Agricultural Machinery Museum

Local Suppliers

- ✓ Catering
- ✓ Photography
- ✓ Flower Arrangements
- ✓ Accommodation
- ✓ Bus Hire



SHIRE OF BEVERLEY



BEVERLEY HISTORICAL SOCIETY presents

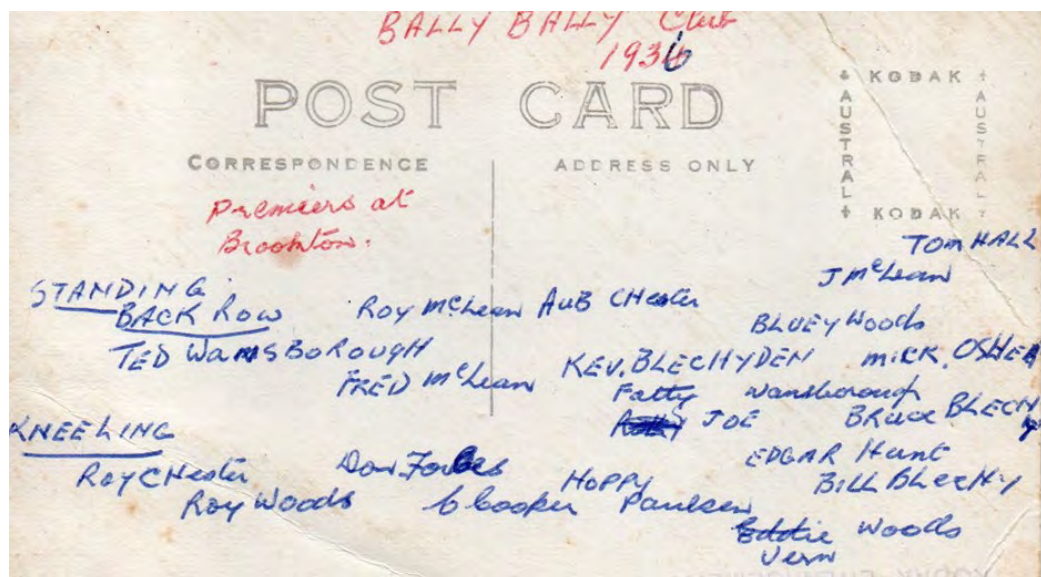
Footballers of Yesteryear

Beverley Times, Friday 28 August 1936 FOOTBALL: BALLY BALLY WINS SEMI-FINAL.

Playing on the Beverley ground Bally Bally had a well-merited victory over Brookton last Saturday afternoon. The ground was saturated with water and soccering tactics prevailed right from the first bounce. Under these conditions, orthodox football was out of the question, but all the same the match was well worth watching. Both teams showed plenty of pace on such a heavy ground. Brookton made a good showing but Bally Bally was better balanced and combined better. Final scores were: Bally Bally 4 - 14; Brookton 3 - 4.



Bally Bally Football Club Premiers 1936 at Brookton (above) with names on reverse (below).



Beverley Times, Friday 2 October 1936

Footballers' Dinner.—To celebrate their winning of the Pingelly-Brookton Football premiership members of the Bally Bally Football Club and their supporters held a dinner at the Railway Hotel last Saturday evening. There was a very large attendance and many toasts were honoured; the team being freely congratulated on its fine performance. [No write-up of the Grand Final itself could be found]



BEVERLEY HISTORICAL SOCIETY

presents

A New Series Remarkable Women of Beverley

"A Person of Good Fame & Reputation" - Mary Joyce 1842-1922

Mary Joyce was the wife of Robert Joyce, a native of Ireland, born in 1843.

In September 1891, Robert Joyce became the Licensee of The Railway Hotel, Vincent St, Beverley (now the Hotel Beverley). Robert was supported by his wife, Mary, and eight children – Gerald, John, Robert, Mary, Kate, Johanna, Maggie & Monica.

Robert Joyce died in October 1894 at the age of 51. He injured his hand, which became poisoned & led to a fatal inflammation of the lungs. He was believed to be insured for £500 (\$90,000 now). Mary Joyce was 52.

In November 1894, Mary Joyce, 'a widow now residing in Beverley' advertised her intention of obtaining the license for the Railway Hotel. 'I have never held a license before' she stated. The application was supported by Lewis Smith, HH Sewell, P Whitely, W Voules-Brown & Horace Smith. They described her as "a person of good fame & reputation". A Publicans General License was granted to Mary Joyce in December of the same year. Publican's General License Renewals were granted to Mary Joyce every year from 1896 to 1902, when she relinquished it to her son.

In a published list of 13 prominent persons supporting the candidature of William Smith continuing as the first mayor of Beverley Municipal Council in 1898, Mary Joyce was the only woman.

Mary lost her 18-year-old daughter, Maggie, in July 1897 to what the newspaper called an "Affection of the Lungs". In May 1902 Mary was bequeathed £85-5s from the estate of Gerald Joyce of Beverley.

In December 1902, Mary relinquished the license for the Railway Hotel to her son, John Joyce. But in April 1906 John developed severe pneumonia and died within a few days. John's estate bequeathed Mary £312-0s-5d. Mary was now 64 and three of her eight children had died.



After John's death, Mary made the decision to step away from the day-to-day running of the hotel and advertised the Railway Hotel for lease. A series of Licensees managed the hotel up until 1913.

Mary & her family moved to Perth. Her daughter Kate married Mr Hearne at St Brigid's West Perth in 1906.

The License was the briefly transferred to Mary's son, Robert, in 1913, while Mary & Robert undertook a major overhaul of the property, demolishing stables & fences and renewing same, as well as renovating and remoulding the hotel throughout. Mary was 71 years old by now.

On 22 May 1922 Mary Joyce died after a short illness at her residence, 216 Brisbane Street, Perth. She was brought to York by train and interred in the Catholic cemetery section beside her husband, Robert. Her children John & Maggie were also interred at York. She was survived by four daughters, one son and six grandchildren. Mary was 80 years old.

Photo:

Three of the daughters of Mary Joyce- perhaps Mary, Johanna & Monica taken the day of their sister Kate's wedding in 1906.

EVENTS & WORKSHOPS IN MAY

Plan your
Goodbye
your way

PURSLOWE
TINETTI
FUNERALS



Bailiwick Legal.
Wills & Estates

Time's ticking...

Free Funeral Planning and Wills & Estates information session

Purslowe and Tinetti Funerals Northam will be providing everything you need to know about funerals and answering all your questions.

Danielle from Bailiwick Legal will be covering Wills & Estates, Power of Attorney, Power of Guardianship and more.

Date: Wednesday 04 May 2022

Time: 10am onwards

Venue: Beverley Cornerstone

141 Vincent Street

Morning tea will be provided

Bookings: 9646 1600 or
email: beverley@crc.net.au



WEDNESDAY 04 MAY

Funeral Planning and Wills & Estates

FRIDAY 27 MAY

Friday Bingo

MONDAY 30 MAY

Pest Management Workshop

PEST MANAGEMENT WORKSHOP WITH SABRINA HAHN

The pest management workshop with ABC Radios Sabrina Hahn was unfortunately postponed last month, however the workshop is now rescheduled to Monday 30 May 2022. Same venue, same time.

It is going to be an informational workshop about how to remove pests from your garden naturally and safely.

To book your tickets or for more information contact us at the Beverley CRC. This workshop is supported by Department of Communities.

GRANT WRITING WORKSHOP

Specifically aimed at community groups looking to apply for the next round of the **Shire of Beverley Grants** in July.

"LEARN HOW TO STRENGTHEN YOUR APPLICATION
AND SUCCESSFULLY ACQUIT YOUR PROJECT "

FRIDAY 10 JUNE 2022

9.30AM - \$1,000 APPLICATION
1.30PM - \$5,000 APPLICATION
BEVERLEY CORNERSTONE

RSVP at the CRC
9646 1600



FREE




Supported by
Department of
Communities

GARDEN
workshop

MONDAY
30 MAY

Beverley
Community Garden
10.30am start
\$5 per person
RSVP 9646 1600

Pest Management
presented by
Sabrina Hahn

What we've been up to April 2022

MAKEUP WORKSHOP WITH COURTNEY HOOPER FROM HOOPER ARTISTRY

On Wednesday 13 April, Courtney Hooper from Hooper Artistry held a makeup workshop at the Beverley CRC. The excited group of ladies learned different tricks of the trade, products, tools and techniques. With years in the makeup industry, Courtney gave the group invaluable advice on products and tools you should use to prepare your skin, how to apply contour and highlights to your look. The ladies practiced a day look and a night look. The group were able to ask questions and try out Courtney's makeup techniques as she worked on her model, Bayley Wooster. Not only did the group get to work along side a professional makeup artist but they also enjoyed a catered lunch. Thank you to everyone who attended.



BUSH TUCKER WORKSHOP AT THE COMMUNITY GARDEN

On the 19 April the CRC and Community Garden held a Bush Tucker Workshop for the whole community to enjoy. We had a great turnout and had plenty of food. Our bush tucker expert, Janine from Zanthorrea Nursery's was super knowledgeable about native bush tucker, providing advice on the best plants to plant in our area, things to lookout for, medicinal uses of certain plants and even provided some recipes for everyone to try. The group were able to taste and smell a variety of fruits, herbs and plants. Thank you to Department of Communities for supporting this workshop, everyone who attended learnt so much. If you are wanting more advice for your garden, don't forget to check out the Pest Management Workshop at the end of this month.



**FREE
FACE MASKS**







**FREE Covid-19
RAPID ANTIGEN
TESTS**



WE ARE NOW DISTRIBUTING FREE RAT'S AND MASKS TO BEVERLEY RESIDENTS

WE WILL NEED YOUR IDENTIFICATION FOR COLLECTION UNTIL STOCK RUNS OUT

Beverley Community Resource Centre
BEVERLEY CORNERSTONE
141 VINCENT STREET, BEVERLEY
CALL US FOR MORE INFO
9646 1600

Supported by  Department of Primary Industries and Regional Development

FOR MORE HEALTH AND SAFETY ADVICE VISIT www.health.gov.au/

Free RATs Tests & Masks

Thanks to the Government of Western Australia, the Beverley CRC is now able to provide free face masks and Covid-19 rapid antigen tests available for all households in the Beverley community.

Each household now has the ability to collect **additional** rapid antigen tests and masks from the roll out tests the government handed out.

We do ask that you bring your identification as we need proof of residency.

As we have been given limited stocks, we are providing each household with limited tests and masks to share with family members.

FRIDAY BINGO

Beverley Cornerstone - 141 Vincent Street

Friday 27 May 2022

Eyes down 1pm - Finishing 3pm

Afternoon tea available

For more information contact Sam 9646 1600





Beverley Golf Club
Forrest Street,
Beverley WA 6304
P: 08 9646 1090
E: bevgolf@wn.com.au

OPENING DAY

Saturday 9th April started the golf season for Beverley Golf Club. 31 players started the year off in great fashion in an Ambrose format. The day was kindly supported by T-Bone and Sons Butchers, who have been a great sponsor for the opening day for many years. Their sponsorship is always greatly appreciated.

The day was opened by our club patron John Donovan who hit the first ball of the year. The winners on the day were Dale Wansbrough, Brock Fleay and Matthew Miller. Thank you to everyone that played on the day.



To get the season started and to be able to play on a fantastic golf course I want to thank all those that have been down at the golf club helping over the last few months. It has been a real team effort that has been led by Terry Woods and Mike Carthew.

Also a big thank you to John Shier who donated a lot of the machinery used around the course.

On the 9th April we had a Fish and Chip night at the club. We had 40 people turn up who enjoyed great food and football on the big tv. This is something that we will continue during the year, with the next one being held on Friday 6th May. I hope to see you all down there.

In May golf professional Rob Farley will be in Beverley conducting golf lessons at the club. All levels of golfing ability are welcome, but I encourage those beginners out there that want to learn the game and get better to come down.

COVID REQUIREMENTS

At present the golf club is subject to the below government requirements. Some of these requirements may be strengthened or removed. As we receive further updates the golf club will pass that information on as soon as possible.

- Face mask to be worn inside the clubhouse at all times
- Proof of Vaccination to come inside clubhouse, unless using toilet facility or booking for golf round.

It is pleasing that none of these restrictions prevent anyone coming to the club and playing golf and I encourage everyone to come on down for a hit.

SCROUNGERS

Scroungers is still being played into the winter season. Come down for a very laid-back relaxing afternoon of golf every Wednesday and Friday. 6 holes of golf with tee off at 3.30pm. Followed by a few beers at the bar. Everybody is welcome to come down and play.

MAY GOLF FIXTURES

MENS

Saturday 7 th	Always Green Trophy 1st Qualifying Round - Club Championship	Stroke
Saturday 14 th	Beverley Electrical Services Trophy Arrange own partners	Canadian Foursomes
Saturday 21 st	Garden Gnome Trophy 3 Stick Competition	Stableford
Saturday 28 th	Belhus Trophy Arrange own partners	4BBB Stableford

LADIES

Wednesday 4 th	Delys Kilpatrick Trophy	Stableford
Wednesday 11 th	Minchin & Hobbs Trophy	4BBB Stableford
Wednesday 18 th	Ali Lewis Trophy	Par
Friday 20 th	Tammin Open Day	
Wednesday 25 th	Maxine Watts Trophy	Stroke



GOLF LESSONS

Come down to the Beverley Golf Club on the below dates for some expert coaching from Golf professional Rob Farley.

Cost is \$10 a lesson.

Lessons start from 9.00am for the ladies and from 10.30am for the men.

FRIDAY 6th May

FRIDAY 20th May

FRIDAY 3rd June

FRIDAY 17th June

The clinics will be for beginners to experienced players for men and ladies. Golf sticks are provided. Looking forward to lots coming and learn this great game.

Please contact Jane Murray for numbers. 0458460037



Beverley Horse and Pony Club



Who's been out and about

York Pony Club Tetrathlon: So great to see our younger riders getting out to local events and having a go. It is a huge undertaking to compete at horse events and can be daunting for the first time. Well done to Mia Farr and her family in their first formal event. Also, well done to Carly & Mac Ballantyne and Ruth Elsegood who also completed over the weekend.



State Tetrathlon Championship: hosted by Mortlock Pony Club on the 12th and 13th February, Mac & Carly Ballantyne and Emily & Jessica Maxwell all attended. Great results all round, our Beverley Horse & Pony Club riders took home lots of ribbons and prizes! Jessica in the 65cm, individual 3rd place in the 13-24 years & her team placed 1st. Mac in the 80cm individual 13-16 years & his team placed 3rd. Carly in the 95cm individual 5th place 11-24 years & her team placed 2nd. Emily in the 95cm individual 4th place 11-24 years & her team placed 2nd. Fantastic result and well done to the families for their commitment.

2nd Rally: 20th March had four groups of riders rotating through flatwork, showjumping, games, pacework and a rideout down to the river. After lunch all the riders worked on their Horsemaster-ship to develop and practice their knowledge and horse care skills for their certificates. Welcome to our new member, Elsie her family. We also had two 'Come and Try' riders, Emily and Sonia, checking out what a day at pony club looks like.



Beverley (West Aust) Horse And Pony Club Events

beverleyhorseandponyclub

2022 Committee contacts:

President: Lisa Maxwell	M 0408 902 701
Secretary: Tess Hawke	M 0419 879 310
Coach Co-ordinator: Jessamin Pain	M 044 7722 958



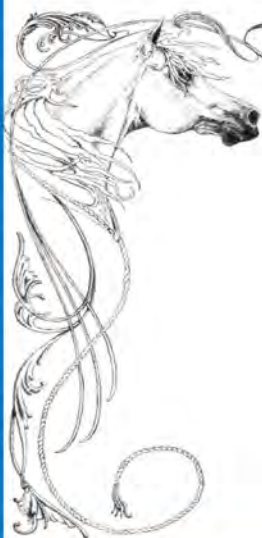
2022 Upcoming dates and events ...

May

- 1 3rd Rally @ Beverley Horse and Pony Club
- 7/8 Avon Zone ODE Avon Valley SJPC, Northam
- 20-22 Show Jumping State Championships @ State Equestrian Centre
- 15 4th Rally @ Beverley Horse and Pony Club

June

- 5 Pony Club Festival Avon Valley SJPC, Northam
- 12 5th Rally Beverley Horse and Pony Club
- 25 MGA Pairs Beverley
- 26 Avon Zone PPMG Runoffs and Novelties Qualifier, Beverley HPC



Day	Date	Event	Auskick	Net Set Go PP-Yr3	Junior Footy	Junior Netball	Venue
Wed	30th Mar	Training			4:00pm	4:00 PM	Beverley
Sat	2nd April	Quairading V Beverley			10am	10am	Quairading
Wed	6th April	Training			4:00pm	4:00 PM	Beverley
Sat 9th April Sat 9th April to Wed 20th April—SCHOOL HOLIDAYS (BYE)							
Sat	23rd April	Keller/Tammin v Beverley			10am		Tammin
Wed	27th April	Training		4:00 PM	4:00pm	4:00 PM	Beverley
Sat	30th April	Training	9:00 AM				Beverley
Sat	30th April	Beverley v Quairading			10am	10am	Beverley
Wed	4th May	Training		4:00 PM	4:00pm	4:00 PM	Beverley
Fri	6th May	Training/Scratch Matches			5:30pm	5:30pm	Beverley
Sat	7th May	Training	9:00 AM				Beverley
Wed	11th May	Training		4:00 PM	4:00pm	4:00 PM	Beverley
Sat	14th May	Beverley V Cunderdin			10am	10am	Beverley
Wed	18th May	Training		4:00 PM	4:00pm	4:00 PM	Beverley
Fri	20th May	Training/Scratch Matches			5:30pm	5:30pm	Beverley
Sat	21st May	Training	9:00 AM				Beverley
Wed	25th May	Training		4:00 PM	4:00pm	4:00 PM	Beverley
Fri	27th May	Training/Scratch Matches			5:30pm	5:30pm	Beverley
Sat	28th May	Training	9:00 AM				Beverley
Wed	1st June	Training		4:00 PM	4:00pm	4:00 PM	Beverley
Fri	3rd June	Training/Scratch Matches			5:30pm	5:30pm	Beverley
Sat	4th June	Training	9:00 AM				Beverley
Wed	8th June	Training		4:00 PM	4:00pm	4:00 PM	Beverley
Fri	10th June	Training/Scratch Matches			5:30pm	5:30pm	Beverley
Sat	11th June	Training	9:00 AM				Beverley
Sat	11th June	Watheroo Cup Yr7's					Watheroo
Wed	15th June	Training		4:00 PM	4:00pm	4:00 PM	Beverley
Sat	18th June	Training	9:00 AM				Beverley
Sun	19th June	Ferguson Shield (Up to yr5 by selection)			Time T.B.C	Time T.B.C	Quairading
Wed	22nd June	Training		4:00 PM	4:00pm	4:00 PM	Beverley
Sat	25th June	Cunderdin v Beverley	9:00 AM		10am	10am	Cunderdin
Sun	26th June	Beverley Shield (Up to yr7)			Time T.B.C	Time T.B.C	Cunderdin
Wed	29th June	Training		4:00 PM	4:00pm	4:00 PM	Beverley
Sat	2nd July	Beverley V Keller/Tammin	9:00 AM		10am		Beverley
Wed 6th July to Sat 16th July SCHOOL HOLIDAYS (BYE)							
Wed	20th July	Training			4:00pm	4:00 PM	Beverley
Fri	22nd July	Training/Scratch Matches			5:30pm	5:30pm	Beverley
Wed	27th July	Training			4:00pm	4:00 PM	Beverley
Fri	29th July	Training/Scratch Matches			5:30pm	5:30pm	Beverley
Wed	3rd Aug	Training			4:00pm	4:00 PM	Beverley
Sat	6th August	Beverley v Quairading			10am	10am	Beverley
Sat	13th Aug	Windup	9:00 AM	9:00 AM	9:00 AM	9:00 AM	Beverley
		Cup/Shield/Carnival					
		Playing a Team		Please arrive 30min before your game (10:00am for a 10:30am start)			
			Corrigin Neutec Cup for Auskick to be confirmed at a later date				

Please Note: Saturday mornings are generally in club scratch matches for Junior Netball & Junior Football (not Auskick/Netsetgo)



Valenti Lawyers Are Now In Northam

valentilawyers.com.au



Valenti Lawyers is a boutique law firm which prides itself on providing a personalised quality legal service. We specialise in eight core services for leading businesses and individuals, each led by one of our experienced senior lawyers; Business Growth & Protection, Dispute Resolution & Commercial Litigation, Finance & Security Services, Insolvency, Land Reservation, Resumption & Compensation, Property & Town Planning, Rural Assets & Succession Planning, and Wills, Probate & Inheritance. You can now find us at the below address in Northam every fortnight!

Open fortnightly from the 12th February 2021.

Please head to valentilawyers.com.au to view our Northam office dates, and to book an appointment with one of our staff.

**RSM
210a Fitzgerald St East.
Northam WA 6401**

Beverley Clay Target Club

Rifle club Nicholas St, Beverley

2022 Dates

9 Jan - 50DB

6 Feb - 25SB-25PTS

6 Mar - 60MXD

3 Apr - 50DB

1 May - SHOOTERS CHOICE

12 Jun - 25DB-25SB

10 July - 50DB PTS

7 Aug - 60MXD

4 Sept - SHOOTERS CHOICE

2 Oct - 25 SB PTS

13 Nov - 50 CONT

11 Dec - CAPTAINS CHOICE

Practice Starts @ 9:00 am

Shoot Starts @ 10:30 am Sharp

New members are more than welcome to come and try, shotgun and ammo can be provided for people without a licence or gun.



COUNTRY LINE DANCING

Thursday mornings at the
Town Hall

Enquiries to
Jan 0429 952 177

EMS

Evert's Mechanical Services

For Affordable, Friendly, Honest Service

We Come to you, Mobile Mechanic

- ✓ **We are your local Mechanic, in Beverley.**
- ✓ **Fully trained and Qualified to service your car**
- ✓ **Service your Brakes/Change Brake fluid**
- ✓ **Oil and Filter Change**
- ✓ **General Safety Check**
- ✓ **Car, 4WD, SUV's Old and New**
- ✓ **Change Engine Coolant**
- ✓ **Tune ups**
- ✓ **Battery Replacement**
- ✓ **Other Repairs/Engine/Dash Lights Diagnosed**

Please Phone us on: 0404-153-264

Email: EvertsMechanical@protonmail.com



BEVERLEY MENS SHED

Open every Tuesday morning 8.30am to 11.30am at the old Fire Station. Call in for a coffee, meet the members and see the great equipment for members to use. New members are always welcome. Contact Harvey Morrell for more information on 0427 235 681 or email president@beverleymenshed.com

Rental Wanted

Prefer 2nd house on acreage
For working single mature woman
0490 706 804

THANK YOU

Sylvia May Nicholls 18.01.1929 to 25.04.2022

Linda and I, Mark and Evelyn would like to thank the community of Beverley for their care and love at this time of our mothers' passing (25th April 2022). I would like to thank:

The St. John's ambulance crews, who transported mum to the Beverley Hospital on the one occasion where she needed to come over for tests etc., most recently.

The staff at the Beverley Hospital, who looked after mum for an overnight stay.

We would like to thank Kalkarni Residency, which has been marvellous in mum's care, right to the end.

The medical staff at the Beverley Medical Centre, who have worked tirelessly at making Mum comfortable, especially in the last three months.

We love living in such a close and caring community and your personal expressions of care and comfort have been very special to us all, and have buoyed us up.

Clive Nicholls

THANK YOU

Sincere thanks to all who came out to control the fires on my property on Wednesday 8th and Friday 10th April.

Special thanks to Bill Cleland for an exceptional effort in coordination and fire control. Thanks to Justin & Bruce Mann for follow up to ensure everything was safe and to Troy for support and provisions. To the Dale West brigade members and all the men and women of the community who came and worked tirelessly, I will be forever grateful.

Terry McLaughlin



The Good Life Store in York has now launched a website to make shopping easier for locals.

Our website is designed for locals to shop on line and pick up orders from the store, 109 Avon Terrace York, (next door to pharmacy).

Check out our range of products.

<http://thegoodlifestoreyork.com>

Beverley District High School P & C Meeting

The next P&C meeting is on JUNE 15th at 7pm at the Freemasons Tavern





Beverley Badminton

Every Wednesday Morning at 9am
at Beverley Shire Hall

We hope to see you all there, new members very welcome, come and have a go!

COVID Restrictions are to be adhered to, players will need to provide proof of double vaccination and need to wear masks when NOT playing, thanks.

Social and Competition Games Only

Please wear closed in shoes. Rackets are provided

NEW MEMBERS WELCOME

For More Information or Enquiries
Find us on Facebook
or email beverleybaddy@outlook.com
or contact Elaine on 0408 903 478



Yarns & Yarns

EVERYONE IS WELCOME FOR A FUN MORNING
OF CRAFTING - EVERYTHING FROM
CROCHETING, KNITTING, SCRAPBOOKING TO
SEWING. JUST BRING YOUR BYO CRAFT
PROJECT AND JOIN US FOR LAUGH AND
MORNING TEA.



Mondays at 10.30am
CRC Cornerstone
Morning tea available \$3



BEVERLEY
AGRICULTURAL SOCIETY INC.

*Does your Community Group
need Fundraising
Opportunities?*

**Is your Community Group interested in being
involved (fundraising opportunities) in the
Beverley Agricultural Show?**

Contact the Sue Martin, our Secretary, on the
below details:
beverleyagsociety@gmail.com or 0427 771 054

**to be added to our Community Group Register to
be notified of any opportunities that arise.**



Bailiwick Legal.

BEVERLEY LEGAL HOT DESK

Beverley Community Resource Centre
141 Vincent St

DANIELLE EDWARDS



The team at Bailiwick Legal is excited to launch its new initiative
Regional Legal Hot-Desk.

Bailiwick Legal practices in the areas of commercial, agribusiness,
litigation, dispute resolution, wills & estates, employment &
workplace, property, mining & access, and tourism law.

Danielle Edwards grew up in the country and is an Associate at
Bailiwick Legal.

Danielle will be in Beverley on the following dates between
9.30am - 3.30pm;

**March 15
May 10
July 19**

To book a free 20-minute consultation please email
danielle@bailiwicklegal.com.au or call 0488 727 886



Take the opportunity to join in gentle activity aimed at general fitness and falls prevention.

Stay Active

with the
Beverley Everlastings

Stay Active is a weekly one-hour keep fit session for those who find gentle aerobic, strength, balance and stretching exercise beneficial to their health.

The exercises are designed for over 50s, but younger participants are welcome. Those less mobile or those recovering from accident and illness also find the exercises useful.

Chair exercises are available and participants can opt to do all or some of these.

Stay Active

Date: Tuesday's

Time: 9:00am

Place: Beverley Recreation Centre

Cost: \$1

Come along for social-distancing fun activity.
Stay Active is a volunteer community health program



Government of Western Australia
Department of Health

*No act of kindness,
no matter how small,
is ever wasted*

BEVERLEY QUILTING GROUP

We meet on Tuesday's at the Masonic Lodge in the back room. We start at 9.30am and finish at 2.00pm

\$2 donation per session and BYO lunch.

For further information contact Jan Sherwood on
0438 019 510

Card Games at CWA

BRIDGE

WHEN: Monday's

WHERE: CWA Hall

SAMBA

WHEN: Saturdays

TIME: 1.00pm

WHERE: CWA Hall

Afternoon Tea provided -

Phone 9646 1271



BEVERLEY LIBRARY

**Open Monday
to Friday
9.00am to 4.30pm**



LOCAL BUSINESSES



ANIMAL HEALTH, CHEMICALS, FENCING, FERTILISER, PET FOOD, SEED, STOCK FEED, WATER EQUIPMENT



LOT 502 DE LISLE STREET, BEVERLEY
TRADING HOURS MON-FRI 8AM-5PM

BARRY FRASER 0427 940 827



Locals Supporting Locals



E Squire Contracting Services

Water Supply
Windmills & Accessories
Solar Pumps:
Sales, Service, Installation
Fencing & Yards
Trenching & Poly Pipe Laying

E Squire Contracting Services
Beverley and surrounding districts

Phone: 9646 0800

Errol Squire 0438 682 687

Painter Decorators

All repairs & painting

Lyndon & Cameron Grover

0427 661 302

lydongrover@bigpond.com

Reg: 3941



- Plastering
- Pressure Cleaning Roof
- Gyprock
- Spray Painting
- Repairs
- Gutter Replacing



C & B TRANSPORT

DELIVERING GENERAL FREIGHT AND
CHILLER GOODS

3 DAYS PER WEEK OR AS REQUIRED

TO

**BEVERLEY, BROOKTON,
PINGELLY**

FROM

**PERTH DEPOT CANNINGVALE
MARKETS**

PLEASE CONTACT PAUL BALDWIN

ON

0417 953 968 or 08 9646 0461

BIG ENOUGH TO DO THE JOB SMALL ENOUGH TO
CARE

WOOL BUYER / BROKER

Broking Clips

Buyer of oddments

Pick up and same
day payment

MIKE FAIRCLOUGH

0429 635 999

Established in 1997, proudly servicing Beverley and surrounding areas



**BEVERLEY GAS + PLUMBING
SERVICES**

PL 9723
GF 017690
BFL 3108

**Beverley Gas and Plumbing is your local plumber
for all your plumbing and gas needs.**

- Renovations
- Septic and leach drains
- Gas installs and maintenance
- Hot Water
- Blocked drains
- Dripping taps
- Backflow prevention
- Sewerage conversion

Kodie Fleay
Phone 0418 929 141
Email beverleygandp@gmail.com

GROW A BUMPER CROP WITHOUT BREAKING THE BANK

Your fertiliser dollar buys more at Whitfert

If you're looking for real economies of scale on farm, go with Whitfert's range of proven, quality fertilisers that don't cost the earth. Improve your yield potential without breaking the bank.

Go with Whitfert

CALL: 1800 654 089
www.whitfert.com.au



RA-AN ENTERPRISES

EARTHMOVING CONTRACTOR

Dam sinking
Dam cleaning & enlargements
Fence Lines
Shed sites etc.



Dozer & Excavator Hire
Dozer with Rake
Can provide Bobcat - Backhoe - Grader - Side Tipper
For larger jobs 54 tonne Dozer

Contact: Ray 0428 936 621

History

Vincent Street



As part of the Heritage Trail component of the Vincent Street Streetscape Project, The Shire of Beverley is seeking photos or video footage of **Vincent Street** (from Hunt Road to the Bridge) from **ANY ERA!**



If you would like to share a photo and are happy to sign a general release form for us to use a copy of your photo or video then please contact Stefan 9646 1200 or email planner@beverley.wa.gov.au

Thank you to those who have already contributed!



SPECIALISING IN
AGRICULTURAL & HAULAGE TYRES,
AG & OTR HOT VULCANISING REPAIRS
& BATTERIES

NOW HOT VULCANISING



0407 457 421



48 DAWSON ST, BEVERLEY



NOT JUST A 'TYRE' SHOP, LIKE US ON FACEBOOK FOR UPDATES!



BEVERLEY
PHYSIOTHERAPY

Kahlia Ferguson
Physiotherapist

Located in the Cornerstone Building. Appointments
available Monday and Tuesday

Sports injuries, osteoarthritis, muscle strains, neck
pain, back pain, headaches, post-op management

Women's and Pelvic Health reviews available with
Physiotherapist **Janine Murray** monthly

Enquiries and Bookings:

Phone 0437 709 577

Email: admin@beverleyphysio.com.au

Online Bookings: www.beverleyphysio.com.au

K² STOCK

**T
R
A
N
S
P
O
R
T**

Call Alec Ferguson
(Fergie)

0417 934 253

k2stocktransport@outlook.com

*Available for sheep and cattle
movements in Beverley & Surrounding
Districts*

*Max Loads:
15 x 300kg Cattle | 33 - 60 Sheep (size matters)*

Bluejay

BluejayAg

Lorretta Adams

AG SOLUTIONS

Heavy Vehicle Accreditation Auditing

WA Certified Auditor #208982

*Authorised to Conduct **Main Roads WA***

Heavy Vehicle Accreditation Auditing

*(Fatigue & Maintenance, Dimension/Loading & Mass
Management Modules)*

Book Online

www.bluejayag.com.au

*Flexible service, able to meet at a mutually convenient
location*



hello@bluejayagsolutions.com.au



0437 282 797

AVON GLAZING

Everything Glass...

Windows Splash Backs
Mirrors & More

Ron Robinson
0427 185 291



WESTDALE TIMBER

T/A R.L. & T.L. TAMBLYN ABN. 106 854 06

TREE TRUNKS REMOVED TIMBER SLAB SALES

PLEASE DON'T BURN UP GOOD USEABLE TREE TRUNKS

SAVE THEM FROM THE CROPPING CLEAN UP FIRE

DON'T LET THEM ROT AWAY TO WASTE

I WILL CHAINSAW THE TRUNK OUT OF THE TREES

LEAVING THE BRANCHES FOR YOU TO PUSH ONTO STUMPS
TO EASILY BURN UP

300MM AND LARGER TREE TRUNKS

WANTED DEAD OR ALIVE BY THE TRUCKLOADS

STANDING DEAD OR STORM WINDFALL TREES REMOVED

MARRI/RED GUMS, JARRAH, WANDOO/WHITE GUMS,
SHEOAK, TUART, BLACK BUTT AND PINES

Save yourself time and effort.

PLEASE CALL RICKY 0419 903 829

BROOKTON PLUMBING

ABN: 37 675 595 336

FOR ALL YOUR
PLUMBING MAINTENANCE
AND GAS FITTING NEEDS

***PLUS SEPTIC WASTE
REMOVAL**

PHONE:
SEAN 0413 480 543 or
NATASHA 0422 013 889

PL: 7130 GF: 006947 SWR: T235

BEVERLEY CHIROPRACTIC CENTRE Dr Liam Welfar

CORNERSTONE BUILDING

141 Vincent St, Beverley

(Entrance off Dawson St)

08 9646 0523

Back Pain? Neck Pain? Headaches?
Sporting Injuries? Postural Problems?
Call us today to find out how I can help.

Hicaps facility available onsite

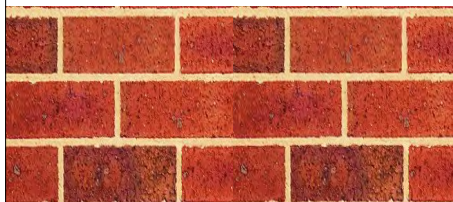
DJ YATES

Authentic Heritage Restoration

BRICK AND STONEMASONRY
RESTORATION
AUTHENTIC REPOINTING OF
MORTAR, RISING
DAMP RECTIFIED
PROPERTY
MAINTENANCE



PHONE DAVE
0419 041 542



Unique Strokes W.A. Painting & Decorating

Reg. No. 4236

ROB BAIN

QUALIFIED LOCAL TRADESMEN

For Guaranteed Traditional
Workmanship & Prompt Free Quotes
Phone: 08 9647 2102
Mobile: 0418 904 013



Beverley
MASSAGE THERAPY

Monday 9.30 - 6.30pm
Friday 9.30am - 2.30pm
by appointment

Weekend appointments also available at
certain times. Call or message Christine on

0408 369 998 or visit

www.facebook.com/vitaminAskincare

In Beverley Chiropractor Centre in the Cornerstone
Building (Entrance off Dawson Street)

York Chiropractic

MacLachlan Centre - 4 Trews Road



Clinic available every week

9641 1500

Dr Alexandra (Sacha) Browne

B.Sc. (Chiropractic) B.Chiropractic



Also available in Cunderdin and Merredin

ChemDry®

Drier. Cleaner. Healthier.™
Betta Finish



Superior carpet
& upholstery
cleaning

Freecall 1800 017087

bettafinish@wn.com.au

Fax 08 96225473

Countryside Memorials

Cast Stone

Granite

Marble

Plaques

Added Inscriptions

All Repairs and Restorations



25 YEARS PROFESSIONAL EXPERIENCE

FREE DESIGN AND QUOTE

Servicing All W.A. Country Areas

9696 0466

OXTER SERVICES

www.oxter.com.au

oxter@westnet.com.au

NEED PRACTICAL TRADE ASSISTANCE?

D & M Services

(Design and Manufacturing Services)

Solving a range of practical needs and problems..

Specialising in:

- ✓ Kitchen renovations
- ✓ Shop fitting and modifications
- ✓ Furniture restoration
- ✓ General carpentry
- ✓ Alterations & installations
- ✓ Metal based fabrication
- ✓ Motorhome and Caravan fitouts
- ✓ Pergolas, Decks & Gazebos
- ✓ Designing and planning

Guy Slingerland

0403602335



northam optical



- Bulk billing to Medicare
- HBF & DVA Provider
- Competitive prices
- Great range of frames & sunglasses
- Locally owned and operated

www.northamoptical.com.au

138 Fitzgerald St Northam WA P 9621 1131

E northam.optical@yahoo.com.au

Vines Aesthetic Clinic

Rejuvenating and
Invigorating



Put the glow back in your skin
juvenating and invigorating

- ✓ Dermabrasion Therapy
- ✓ Led Therapy
- ✓ Injectables
- ✓ Derma Pen
- ✓ PRP



VinesAestheticClinic

Dawson's Concrete & Reinforcing

"Your Local Beverley Concreter"

- Concrete Formwork & Steel Fixing
- Driveways, Shed floors, Maintenance pits, Silo pads, Super sheds, House pads
- Fully mobile service
- Over 30 Years Experience
- 7 Days A Week
- Professional, Reliable Service

Phone for a Free Quote

SANDY DAWSON

Mobile: 0417 375 221

Email: pameladawson@bigpond.com

FB: www.facebook.com/dawsonsconcrete

**SHAZMAC
PLUMBING**

PROUD TO BE YOUR LOCAL PLUMBER

Plumbing Licence: PL 5829 Gas Fitter Licence: GF 7422 RHL: L100443

ABN: 18 531 685 326

For all your plumbing & gas fitting needs

Phone 0408 189 987

PO BOX 116

BEVERLEY WA 6304

shazmac1@westnet.com.au

NO job is too big or too small.



DRUG & ALCOHOL COUNSELLING

The Wheatbelt Community
Drug Service Team will be
visiting Beverley Hospital
fortnightly.

Appointments phone
Jackie Darby 96211 055.

Mulesing Contractor



For all your
Mulesing Requirements
Beverley, York
and surrounding areas

**Contact Terry Slade
0427 635 065**

**KARRADALE LIVESTOCK TRANSPORT
YORK LIVESTOCK TRANSPORT**
ABN 64 054 007 721

We service Beverley, Brookton, York
& surrounding districts

Available to transport Sheep & Cattle

No job too big or small

Support the local communities

Member of ALRTA

If you need stock moved, Peter would love to
hear from you - 0428 481 281



BEVERLEY
Transport

Your local carrier for over 30 years.

**GRAIN, FERTILISER, LIME, HAY,
WOOL AND SIDE TIPPERS
AVAILABLE**

Garry & Sarah Miller

0428 464 066

admin@beverleytransport.com.au

Primary Health Services

Available to the community of Beverley

Child Health Nurse - 9690 1320

To make an appointment, Northam Hospital Admin Staff will assist you in setting an appointment time, which will be, on most occasions, a Monday

Northam also provide Child Development Services via referral - 9690 1320

School Health - 9641 0200

Dietetics - 9690 1320

Occupational Therapy - 0429 466 224

Physiotherapy - a doctors referral is required - please send all referrals to PO Box 312 Northam 6401. Clients will be acknowledged with a letter informing them of the approximate wait time.

Podiatry - email: admin@comopodiatry.com.au or call 9450 6200. Attendance is generally a Monday.

If eligible for an EPC Plan which is through referral from a Doctor, Como Podiatry will bulk bill Medicare for a max of 5 sessions per year. Non referral clients are may be eligible to claim Private Health for the \$60 sessions.

A Doctor's referrals are generally faxed to the service provider, Como Podiatry, who contact the patient by phone and make an appointment.

Social Work - Phone 9690 1320

Speech Pathology - 9690 1320

These services are provided by WA Country Health Service and are free of charge. If you have any concerns about your own health or your child's health and development, please phone the relevant health professional to discuss your concerns.

Alternatively, you can speak to the Child Health or School Health Nurse, or your GP, to discuss your concerns and to determine the most appropriate referral.

Avon & Central Primary Health Promoting Healthy Lifestyles



Star Hearing Consultants

Hear Better To Live Better | INDEPENDENT AUDIOLOGISTS

Expert Hearing Care Services in **Beverley & Brookton**

Do you have
Hearing difficulty / Tinnitus (Ringing in the ears) ?



**Check our
Google reviews**
to see what
our patients
say about our
services!

1 Hour Free Assessment

For Limited Time only

Treating Hearing loss improves...

- ➔ Memory / Reduces the Risk of Dementia
- ➔ Safety and Balance
- ➔ Brain Function / Cognitive ability
- ➔ Long and Healthy aging
- ➔ Mental and Emotional Well being

Are you a Pensioner / Veteran?

No out of pocket cost to you...

You are eligible to have these tiny hearing aids under the
Government Funded Hearing Service Program (HSP)



These days...

Hearing loss is more visible than hearing aids

Free

Test

Free

Hearing aid Fitting

Free

Trial

Regular Clinics in both Medical Centers

Beverley & Brookton	Beverley & Brookton
Viines Medical Practice	Beverly Medical Practice & Saddleback Medical Center

To book a Free Hearing Assessment

Call : 1800 11 4327

Or ask at the Reception / your Doctor



1800 11 HEAR / 1800 11 4327



www.starhearing.com.au



AVON TERRACE DENTAL | YORK
your smile. our passion.

Now Open 9am to 5pm Monday to Friday!

Our Services:

- Preventative and General Dentistry
- Children's Dentistry
- Anxiety Management
- Cosmetic Dentistry
- Implants
- Endodontics
- Crown and Bridge
- Teeth Whitening
- New Dentures and Repairs
- Emergency Dental Care
- Veterans' Affairs

*New
Patients
Welcome!*

Participating provider for

129 Avon Terrace
York WA 6302
(08) 9641 2123



York
Estate Agents

York Estate Agents
(Beverley Division)

Good, Bad or Ugly We Sell!

Free Appraisals
"Properties WANTED we have qualified buyers waiting now"

Estate Experts
Professional and Trustworthy

Residential and Rural - Mike Bawden

0403 268 158

Rentals - Jenette Callaghan

0418 929 011

Office - 9641 1335

Email: yorkfn@westnet.com.au

www.yorkfn.com.au

BEVERLEY STORAGE & TOWING

HUGE NEW PREMISES LOCKED & FENCED

\$100 A MONTH CARS, CARAVANS, BOATS,
MOTORHOMES WE HAVE ALL OF YOUR
STORAGE NEEDS COVERED.

TILT TRAY WITH WINCH CAR TRAILER
PICK UP AND DELIVERY - ALL AREAS

BRETT HIGGINS

0400 048 976

beverleystorage@hotmail.com

www.facebook.com/BeverleyStorage



WANTED



BLOWNOUT SHEARERS

Contact: Jack Dugan Phone: 0450609281

Email: surebetss@hotmail.com

Shearing services provided, cost plus rate or cocky shearing, full crew up to
five stand available, clean, tidy, professional 25 years industry experience.



Supply and Installation of all types of air-conditioning and
refrigeration systems. Split, Ducted, Evaporative, service
and repair to domestic, industrial and commercial.

Throughout the Avon Valley and Wheatbelt, no job too far,
call Mark for a free quote

Email valleyaircon@outlook.com

ARC Lic AU42118

BEVERLEY DESIGN

Renovations,
Alterations, BBQ's,
Brick Fences, Steps,
Retaining Walls,
Brick paving laid in mortar

Phone

Michael 0407 645 001

Barry 0417 181 724



TAX RETURNS

FORTIZ BUSINESS SOLUTIONS

(Registered Tax Agent
&
Certified Public Accountant)

Tax Returns for all entities
Business Consulting
Software solutions / setup
Bookkeeping / Accounting

OFFICE HOURS:

FRIDAY 9.00am – 4.30pm

101 VINCENT ST (Bankhouse) BEVERLEY

Please phone for an appointment

9646 0282



LOCAL BUSINESS, SERVICING BEVERLEY FOR OVER 10 YEARS

Beverley Earthmoving & Grading

GRADER - BACKHOE - BOBCAT
TIP TRUCK - EXCAVATOR
SIDE TIPPER - DOZER

ROAD BUILDING AND MAINTENANCE
FIRE BREAKS - CONTOUR BANKS - ROADED CATCHMENTS
HOUSE PADS - SEPTIC SYSTEMS - SAND, GRAVEL AND BLUE METAL
DAM BUILDING AND CLEANING

CALL- DAN WILKINSON

0417 093 090

EMAIL- DAN.ZOE@PM.ME

WWW.FACEBOOK.COM/LITTLECOHILLEARTHMIVING/

OPTOMETRIST
AVAILABLE ON
TUESDAY'S
in Beverley



Peter Tidman OPTOMETRIST

If you are over 65 years of age,
you are entitled to a yearly
bulk billed check-up.

We encourage you to keep
on top of your eye health.

You can find us at the
RSL Hall, 50 Forrest Street, Beverley.

Appointment bookings
Please call Beverley CRC 9646 1600.

DC Contracting For Earthworks

Call
Derek
Hammond
0403 062 371



DC Contracting

For Hot Water Extraction Cleaning

Carpets, Rugs and
Upholstery

Call Cara Hammond

0400 762 889



SHOP LOCAL

thank you for supporting
local businesses



NATWAY FURNITURE & CONSTRUCTION

ABN: 62 824 726 465

WAYNE & NATALIE ASHWORTH

Qualified Carpenter &
Joiner Tradesman

General Building Work

Furniture Construction
& Restoration

CONTACT US
27 Brooking Street, BEVERLEY

Wayne 0417 973 415
Natalie 0429 491 039
natwayfc@bigpond.com



BEVERLEY ELECTRICAL SERVICES

BEVERLEY ELECTRICAL SERVICES

EC 006578

*Proudly servicing Beverley and surrounding
districts since 2010, this locally owned
family business can help you with all your
Electrical needs*

Karl and his team offer

All your General Electrical Requirements PLUS

- Cel-Fi Mobile Boosters
- Quality LED Lighting Solutions for any application
- Split Air Con Installations
- Trenching for underground power
- Quality Solar Systems
- Telephone & Data Cabling

**Call Karl on
9646 1222**

**4 De Lisle Street, Beverley
sales@beverleyelectrical.com.au**

SHEDS FOR ALL PURPOSES



Offering robust protection from
the elements, our Australian
standard modular building systems
are engineered for strength in all
conditions.

Designed for the **agricultural** and
hay markets, with the flexibility to
suit many other applications, our **shed**
range will safeguard your valuable
farm machinery and business assets.

- Supply only or supply and
install options available
- Western Australian owned
and operated business
- Locally manufactured products
and components
- Standard and customised designs
- Fully bolted framing system
- Project management services
including council approvals
- Registered builder with an
extensive farming background



With an extendable modular design including optional bay
and end wall additions plus self-build to fully installed
options, there's a customisable system to suit your needs
now and for years to come.

www.phoenixbuildingsystems.com.au

0427 424 672

ryan@phoenixbuildingsystems.com.au

The Station Garden is available for public use at any time; just open the gates and enjoy!

COVID-19 UPDATE:

Proof of Vaccination must now be shown on entry to the Station Gallery, as well as the wearing of masks. Please practice good hygiene and physical distancing at all our events, and use the hand sanitiser stations provided. If you are feeling unwell prior to events, please do not attend.



Beverley Art Prize & Easter Art Exhibition

Such a busy lead up to the exhibition and during Easter, but what fruits did our local community bear! Chiefly the winner of the overall Beverley Art Prize going to none other than Marylou Hutchinson! And also, the youngest artist ever to claim the Best Local Artist award going to Abbey Cooke! Congratulations to you both. Below images show them being presented with their awards by the Shire's Vice President Councillor Chris Lawlor.



Beverley Station Arts purchased several works for the Shire Art Collection:

The overall winner "Iron Lace" by Marylou Hutchinson; The winning mixed media painting "Wildfire Roars" by Marrilyn Barrington; and "Lois" by Charlie Colbung.

The large number of children's work this year was due to the artist-in-residency programme that Beverley Station Arts was able to offer the school through the Creative Communities Covid Recovery Programme. The grant has provided funding to employ professional artists to connect our children with the arts in a yearlong residency in partnership with the school; working the first half of the year with the visual arts and second half of the year with performing arts.

Kaitlyn Elsegood is the artist working two days a week at the school for terms 1 and 2 and the resulting artwork displayed at the exhibition was all credit to her skills in connecting so well with the children. The judges were very impressed by the standard and awarded the 6year and under prize to Lottie Blechynden and 7-12years prize to Annabelle Schilling.

The Peoples Choice Award went to the acrylic painting "Banksia menziesii" by Mim Wells.

Art Raffle - the exquisite quilt (made and donated to BSA by Sally Lumsden in memory of her mother Mary Shaw - a long-time Beverley Art & Craft group member), and the painting "Parrots Playing Chicken" (donated by 2021 Best Local Artist Jan George) was won by local Beverley person Pricilla, who works in the post office.

Markets Early Bird Hamper organized by Marlene went to Allison.



Artists-in-Residence at the Station

Artists-in-Residence for April:

Both Ross Calnan and David Giles enjoyed their time at the Station. Ross sold paintings at the Art prize and David's partner Suzie had a great sale of her tie-dyed garments during the Easter weekend whilst they were manning the gallery. David also ran several successful abstract workshops and was a great help over the recent plein air weekend when 30 artists stayed three or four nights in town painting it's surrounds on the Saturday; and then again at the Broun's farm 'Southbourne' on the Sunday. See pics below:



This pilot Plein Air weekend organized by WA Society of Arts was such an amazing success it may well become an annual event for the town of Beverley, so fingers crossed for next Autumn!



Artist-in- Residence for May

Our Artist in Residence for all of May is Shireen Manning who will be working on the community banner project which has been so well received by the various clubs in Beverley. As part of our contribution to the Spring Back to Beverley weekend in September, BSA was successful in applying for a grant to employ an artist to facilitate the design work and making of teardrop banners for clubs that will be 'paraded' then after the 'Spring Back' weekend become a keepsake for the 22 groups.

Artists-in-Residence for remaining 2022

MAY: Shireen Manning

JUNE: 1-15 Marie Scobie /16-29 Julie Parsons, P Clarke

JULY: 30(June) – July 12 Lorraine Pichugin

JULY: 14 - 9(Aug) Tich Dixon

AUG: 11-30 Steph Boyle

SEPT: 1-29 Thelma Cluning, Carol Patch, Jean Ross

OCT: 1-16 Trish Davis / 17-23 Natalie Blom

NOV: John Kaye

DEC: 1-14 Adrianna Wasinska-fabian

DEC: 15-31 Kelsey Diamond



Beverley Station Singers



Unfortunately, due to recent Covid regulations preventing non vaccinated people inside the Station Gallery and Greenroom of the Platform Theatre, the group has gone into recess before reconvening. For further information regarding recommencement of the Station Singers at the Station please contact Sarah Miller who coordinates the group - Ph: 0427464078

Beverley Amateur Dramatics

PIRATES OF PENZANCE is Gilbert and Sullivan production performed by our local BAD group (Beverley Amateur Dramatics). Rehearsals recommence this month.

NEW DATES FOR:

PIRATES OF PENZANCE

FRI 7 OCT & SAT 8 OCT

FRI 14 OCT & SAT 15 OCT

BOOKINGS: www.taztix.com OR
Beverley CRC



STATION ARTS CALENDAR OF EVENTS 2022

February 18: Friday – Lisa Woodbrook – *Feeling Way Too Good*

April 2: Saturday at 7.30pm – Perth Symphony Orchestra *A String Quartet Gone Rogue*

April 14 – 18 Beverley Art Prize

April 16: Saturday *Easter Markets at the Station*

May 4: Wednesday 7pm: Festival of Small Halls touring Gina Williams and Guy Ghouse, and Jack Davies

July 8: Friday *Cloud Nine (The Giovanni Consort)* at 2pm & 6pm - *Exquisite choral soundscapes in the dark*

Sept 3: Saturday at 2pm *VoiceMoves Choir Muster*

September 24: Saturday *Spring Back to Beverley*

Community Banner Parade plus with *Eurokats* band

October 27: Thurs at 7pm - *Toni Galati the Musical*

November ? : Saturday - *Tribute show*

December 17: Saturday – *Community Christmas Party* featuring *Yuck Circus*



PERFORMING ARTS



Gina Williams and Guy Ghouse, and

Jack Davies WEDNESDAY 4 MAY

Festival of Small Halls brings to Beverley on **Wednesday 4 May** three amazing musical storytellers: **Gina Williams & Guy Ghouse, & Jack Davies**



- BEVERLEY TOWN HALL
- Doors open at 6.00pm, giving you plenty of time to purchase a scrummy meal from *Bellissimo* caterers in the Lesser Hall.
- Show starts 7.00
- Licenced event so please NO BYO
- Table bookings Phone: 0417 983 410
- Rowed seating at the front.
- Tickets online beverleystationart.com or CRC

Gina Williams & Guy Ghouse, & Jack Davies

GINA WILLIAMS and **GUY GHOUSE** use their music and performances to highlight one of the most beautiful and rare languages on the planet; the Noongar language of the southern corner of Western Australia. They are a multi-award-winning duo, but don't let that fool you – they'd much rather allow their performances and the power of the music they create speak for itself.

JACK DAVIES - From singing about seagulls to mumbling poems of sorrow, Jack's songs like to laugh, poke and long-ingly stare at the world. Regarded as one of WA's finest up and coming songwriters, the young singer cut his teeth busking in cafes and busy streets before rising to prominence with his indi folk band "Jack Davies and The Bush Chooks"



Sub centre update

Our office is usually open on Tuesdays and Fridays from 9.00am - 2.00pm. However, there may be times when the office is unattended during these times. To assist you in knowing whether or not we are open, our St John banners are now always placed outside the front of the sub centre on John Street when we are open.

As well as transferring payment of your Benefit Fund renewals directly into our account, your Benefit Fund renewals may also be paid by Credit or Debit Card at the sub centre when we are open. Please note that wearing of a mask is mandatory when entering the sub centre.

For the direct payment of Benefit renewals, please note carefully the account details on your renewal notice, as our bank account details did change at the end of 2021.

All are welcome to contact the sub centre by email (beverley.subcentre@stjohnwa.com.au), or phone (9646 1408) on Tuesday or Friday, with any Benefit Fund or Ambulance transport enquiry.

St John WA - Beverley looks forward to assisting you.

Thank you

The sub centre Committee and volunteers thank Paul from C & B Southern Run Transport for his recent assistance. We had a large number of bulky items that needed to be transported from Perth and your donation of time and fuel in bringing these items to the sub centre for us is very much appreciated.

Thank you Paul for your support of the Beverley sub centre.

Mia DAVIES MLA

Leader of The Nationals WA

CENTRAL WHEATBELT



Northam Office
171 Fitzgerald Street
(PO Box 92)
Northam WA 6401
Ph 08 9622 2871
Fax 08 9622 1668

Merredin Office
The Old Town Hall, Mitchell St
Merredin WA 6415
Ph 08 9041 1702
Fax 08 9041 2554
Freecall 1800 673 914

mia.davies@mp.wa.gov.au
www.miadavies.com.au
 MiaDaviesMLA
 facebook.com/MiaDaviesMLA

THE NATIONALS *for Regional WA*

Authorised by M.Davies, Northam Boulevard Shopping Centre, Fitzgerald Street, Northam.



No excuses

See your doctor if you notice anything different with your body.



For more information visit
www.findcancerearly.com.au

Join us for a Free Funeral Planning Seminar

10am Wednesday 04/05/22. Call Beverley CRC to book 96461600



Burials
Cremations
Memorials
Country - City
Prepaid
Bonds

For a free booklet call Rob & Dianne Tinetti 96221411 or email info@ptfnortham.com.au

MAUGERS WINDOW CLEANING

Experienced, Reliable and Top-Quality Window Cleaners

Est. 2006

ABN 38 510 707 690

Residential - Commercial - Construction

From Single Story Homes to Multi Level Buildings

We use the latest window cleaning technology from traditional squeegee to purified water fed pole systems

Licences: Working at Heights, EWP, White Card, High Risk Access

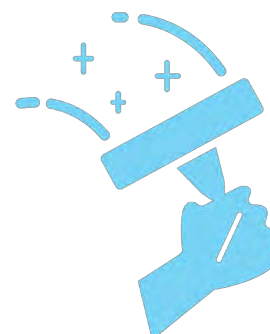
Current Public Liability Insurance

Servicing the Wheatbelt Region



Call 0417 411 573

info@maugerswc.com.au



Other Services: High Pressure Cleaning - Building Washdowns - Signage Cleaning - Gutter Cleaning - Solar Panel Cleaning - Flyscreen Replacement



BEVERLEY HISTORICAL SOCIETY

bhsdeadfinish@gmail.com

In the December 2021 edition of the Blarney we asked if anyone knew the names of the students in this 1958 Beverley State School photo. We had some wonderful community members reply and the names we received are listed below. Thank you!



BR – Ian Nicholson, Robert Bartram, Les Eyre, Des Honess, Wayne Smith, Robert Sing, John Young, Frazer Kilpatrick, Pam Gare/Gail Garlett, Neville Boyle, Joyce Woods, Dennis Willey, Graham Hobbs, Alan Cluelow, Gloria Thorpe, Kaye Bryan, Helen McIntosh, Pat Blechynden.

MR – Pam Blight, Carol Webb, Adrian Lupton, Anne Shackles, Anne Cooper, Jill Barrett-Lennard, Sue Husking, Glenys McKean, Charles Goodridge, Lesley Ferguson (back-dark hair), Margaret Boyle (front-blond hair), Ailsa Reynolds (back), Devina Boyle (front), Kaye Jackson, Jill Edwards, Sue Coates.

FR – Graeme Ellis, Ian Reynolds, Alan Ratcliffe, Lewis Blechynden, Ralph Michael, Phillip Denton, Colin Garlett, David McKellar, Phillip Smith, Jim Hill, Jeffrey Williams, Robert Ayres.

To:

The Mum's who are always there, the Dad's bringing up their children alone, the Aunts who take care of their nieces and nephews, Nan's & Gran's who are brining up their grandsons & granddaughters, the Brothers & Sisters taking care of their siblings and the Friends who are there when no one else is

Happy Mother's Day



VINES MEDICAL TEAM

Dr Adebola (Andre) Oladipo

Dr Esther Oladipo

Dr Alan Roustami

Dr Jasmin Tan

Practice Nurse

Vitou Norea Yem

ALLIED HEALTH TEAM

Ryan Woodbury- Chiropractor

Viney Lewis – Podiatrist

Emma Kwok- Dietitian

OPENING TIME

9am-5pm -Monday- Friday

Saturday -9am-12noon.

Phone-9646 1125 / 9468 3606

Online Appointments Now Available. Book at www.vinesmedicalpractice.com

Address: 135 Vincent St, Beverley WA 6304



BEVERLEY COMMUNITY GARDEN

FUNDRAISING RECYCLE PICKUP

If you have any plastic or glass bottles or cans to be recycled, please consider donating them to your Community Garden.

We will pick them up from you if you ring us.

Betty 0400 569 971
Maureen 0429 460 073
Dorothy 0429 989 031.



Visit the Dead Finish Museum



Oldest building in Beverley, built in 1872 as the "Wheatsheaf Inn".

Corner of Great Southern Highway and Morrison Street, Beverley WA

**10 furnished rooms of memorabilia of Beverley town and district.
Featuring the Beverley Room, a large collection of photos and history
of local organisations, school photos and identities.**

ADMISSION ADULTS \$2

CHILDREN FREE WHEN ACCOMPANIED BY AN ADULT

Open 11.00am to 3.00pm Sundays or by appointment

Mid March to November.

Closed from December to early March.

Parking available on Morrison Street. AVMCF Venue.

Contact: bhsdeadfinish@gmail.com

0427 411 881- Joy

9646 1149 - Maree

9646 1075 - Delys



Be very historic

Beverley WA
Be very you

LOOKING TO DOWNSIZE?

Hunt Road Village is conveniently located in town.
The waitlist is often long so we recommend registering your
interest.

Located on Hunt Road, all units are 1 bedroom, 1 bathroom
and each has its own parking space. The conditions of
rental include: applicant must be 54 years of age and
over, ability to care of yourself, a bond payment equivalent
to 4 weeks rent and the first rental payment is payable in
advance. Rent is currently \$150 per week and is reviewed
annually.



Please email
admin@beverley.wa.gov.au or call
into the Shire Office for an
Application Form and full list of
Terms and Conditions.



OP SHOP
Open Fridays
11:00am - 2:30pm

May Roster

May 06

Janice Sherwood, Beverley Hoey,
Lee Storer

May 07 (9am - Noon)

Glenda Burns, Jo Sims

May 13

Betty Wauchope, Ann Bolger,
Gail Alabach

May 20

Cherril Paskov, Joy Smith, Roma
Ladiges

May 21 (9am - Noon)

Christine Brooke, Donna
Williamson

May 27

Betty Lobb, Denise Hales, Helen
Revill

June Roster

Jun 03

Ingrid Bell, Lee Storer, Judy
Williams

Jun 04 (9am - Noon)

Janice Sherwood, Sandy Shaw

June 10

Christine Brooke, Georgie Stone,
Sarah Miller

Jun 17

Glenda Burns, Sue Eramiha,
Valda Morton

Jun 18 (9am - Noon)

Ingrid Bell, Cherril Paskov

Jun 24

Donna Williamson, Dalene Davis,
Pat Pepper

Any further information, contact
Glenys Lane on 0437 807454



BEVERLEY MEDICAL PRACTICE



Providing excellent quality health care to the community of Beverley and the surrounding areas for over 30yrs
Located at the corner of John and Forrest streets (diagonally opposite the Beverley Hospital)

"Cullen House"

106 Forrest Street, PO Box 434

Beverley WA 6304

Ph: 08 9646 1241 Fax: 08 6117 0410

Email: beverleymedical@westnet.com.au

**The Beverley
Medical Practice
Bulk Bills patients
with a current
Medicare card**

OPENING HOURS
Monday to Friday
9am to 1pm & 2pm to 5pm
(Closed Sundays and Public holidays)

General Practitioners

Dr. Remi Adebayo, Dr. Olay Omoniyi, Dr. Sola Oyetunji,
Dr. Tola Ogunleye

Practice Nurse – Lynley & Marcie

BP checks, ECG, woman's health, pap smears, spirometry, vaccinations, counselling, My Health,
Drivers and Health Assessments, wound care etc

Your friendly practice team
Practice Manager – Dawn
Receptionist – Kris, Mary and Emily

Brookton Medical Practice now open Mon to Fri

Saddleback Medical Centre
27 Whittington Street, Brookton 6306
Ph: 08 9642 1485

Allied Health Services - Diabetes Educator, Dietician, Physio, Podiatry, Chiro, Counselling etc.

Practice News!!

FLU SEASON IS HERE - Be prepared get vaccinated
Call our friendly reception staff to book your COVID 1st, 2nd, 3rd or 4th dose
Or your Influenza Vaccine on 08 9646 1241

WOMENS HEALTH

Dr Tola Ogunleye is available via appointment she is specialising in women's health.
Are you due for your Pap smear, annual health assessment, etc.

Supporting the future of Rural GP's in WA

The Beverley Medical Practice is committed to providing quality health services to Beverley and surrounding areas.

As part of our commitment to the community we support and assist up and coming medical health professionals.

We have a number of student GP's attending clinics both onsite and virtually.

These Student GP's are from Notre Dame, UWA and Curtin University

If you are interested in assisting us by allowing one of our students to sit in on your consult or attend a virtual clinic over the phone, please let our staff know.

WESTERN DIAGNOSTIC

The collection centre is closed for the Easter break reopening on the 4th May.

All urgent collections can be done at the Beverley Medical Practice by appointment please call 9646 1241

Care outside normal opening hours - When the Beverley Medical Practice is closed you can always get medical attention by calling-
Ready Care 1800 225 523 or Calling health direct 1800 222 222 or by attending the Beverley District Hospital, located in Sewell Street
Beverley where experienced staff will triage the patient and contact the on-call Doctor
For all Emergencies call 000



BEVERLEY REDBACKS HOCKEY CLUB



The 2022 season has begun!

With Chantelle Meade as our new training supervisor at our Tuesday night trainings there has been a lot of sore muscles and aching limbs, but she has whipped us into shape ready for our first game on April 30th. We are so excited to be playing a new season with a bigger team and so many wonderful new team mates. Players please remember to take a good look at the game roster we email you to make sure you are aware of all your game day responsibilities. Games this year will be coached by our amazing team president Dani Whyte who is unfortunately sitting out this season.

Our junior Redbacks also have their first game coming up on the 30th and we wish them the best of luck!

Events

Senior Training - Tuesday 6pm, Beverley oval

The first training of each month we will host a *team dinner* as a social event.

Upcoming Fixtures

please be aware that some of these fixtures may be subject to last minute changes. Follow our facebook page to keep up to date on changes

Junior fixtures

April 30th	10am @ Northam Hockey ground	Beverley Vs Chopperoos
May 7th	9am @ Beverley Oval	Beverley Vs Redbacks
May 14th	11am @ Northam Hockey ground	Beverley vs Thundersticks
May 21st	9am @ Beverley Oval	Beverley vs Greybacks
May 28th	10am @ Northam Hockey ground	Beverley vs Titans
June 4th	Long weekend BYE	

Senior fixtures

April 30th	3:15pm @ Northam Hockey ground	Beverley vs Drifters
May 7th	2pm @ Beverley Oval	Beverley vs Scorchers
May 14th	4pm @ Northam Hockey ground	Beverley vs Aces
May 21st	2pm @ Beverley Oval	Beverley vs Strikers
May 28th	3pm @ Northam Hockey ground	Beverley vs Jenna
June 4th	1:30 @ Northam Hockey ground	Beverley vs Drifters

Beverley Redbacks Hockey Club Contact Details

Facebook: Beverley Redbacks Hockey Club

Mobile: 0447 811 267 Email: beverleyhockey@live.com.au



**ROYAL ANTEDILUVIAN ORDER OF
BUFFALOES**



**GLE (Inc.)
QUAIRADING BEVERLEY No. 163**

**We meet the first Wednesday of every month
at the Masonic Lodge, Hunt Road, Beverley**

**The objects of our order are Philanthropy
and Good Fellowship**

**For more information contact
Tom 0419 945 240**



**THE RELIGIOUS
SOCIETY OF FRIENDS
(QUAKERS)**

**Beverley Friends Meeting
Old Catholic School Rooms
Dempster Street**

**Meeting for Worship
SUNDAY at 10:30am**

**For more information & enquiries phone
0408 090 345**

**BEVERLEY
REAL LIFE
CHURCH**



*Living life with
Christ*

*All Welcome
Every Sunday
10 am*

50 Hunt Road, Beverley



CATHOLIC CHURCH

**Service in Beverley
8am; every Sunday
Adoration, Rosary & Mass
2.30pm; First Friday of the month; followed by a
cuppa**

at Beverley Sacred Heart Church, Lukin St, Beverley

About Australia's Biggest Morning Tea

Cancer Council WA is encouraging the Wheatbelt community to gather their friends, family or workmates, in-person or virtually, for a cup of tea and a bite to eat whilst raising money to support Australia's Biggest Morning Tea to help those affected by cancer.

This year Cancer Council is hoping to raise more than \$1 million to continue its life-saving cancer research, prevention, advocacy and support programs. For 29 years, Cancer Council's Australia's Biggest Morning Tea has brought together millions of Australians over a cup of tea in support of those affected by cancer.

It doesn't need to be fancy - your Biggest Morning Tea could be at home with friends or family, a simple morning tea in the office with workmates, a virtual get-together, or a gathering in the local community or at school.

Simply register online at biggestmorningtea.com.au, set a date in May or June and start sending out your invites. Every dollar raised helps support those impacted by cancer.

Australia's Biggest Morning Tea is the largest and most successful event of its kind in the country and attracts over 4,200 hosts each year. Due to current circumstances, Cancer Council encourages all to follow the [recommended guidelines](#) provided by the Australian Government. Details regarding Cancer Council fundraising events may change as circumstances change. For more information and support regarding cancer and **COVID-19**, please visit wa.gov.au/government/covid-19-coronavirus.

Anyone unable to host a morning tea can still get involved by donating directly to Cancer Council via biggestmorningtea.com.au.

FREE online Life Now courses - Available Now

People living with cancer in the Wheatbelt will be able to access free online yoga, mindfulness and tai chi courses, with the commencement of Cancer Council WA's Life Now Term 2 timetable in May 2022. The Life Now Program's introductory style courses are specifically designed for cancer patients and their carers, offering participants the chance to learn techniques to support their physical and mental wellbeing during treatment and recovery.

We know through numerous studies that there are a range of benefits from participating in mindfulness, yoga and tai chi, including reducing anxiety, stress and fatigue. Thanks to generous community donations, the Life Now Program offers free evidence-based exercise and meditative courses to support West Australian cancer patients and their carers

Please see Term 2 timetable for all course dates, times and locations <https://www.cancerwa.asn.au/articles/calendar/calendar-exercise-yoga-relaxation-life-now/>

Eligibility criteria apply. Registrations are essential and spaces are limited.

To apply, visit the Cancer Council WA website at www.cancerwa.asn.au and search 'Life Now', or call 131120 to speak to a cancer nurse.

For cancer information and support call 13 11 20

GROUP FITNESS CLASSES

WHEN

Wednesdays
5.15pm & 6.30pm
Fridays
6.00am

WHERE

Beverley
Exhibition Shed

COST

FIRST CLASS FREE
\$15 per class after that

All members of Beverley and surrounding communities are welcome (not just farmers), and all levels of fitness and experience are encouraged to attend!

For more information contact your Active Farmers trainers Ashlyn or Robbie for more information:

Ashlyn Ridgway
0427 461 506
ashlynj@live.com.au

Robbie Wansbrough
0428 843 251
robbie@reapwhatyousow.com.au

<https://www.activefarmers.com.au/beverley-wa>



Saturday 24th September 2022

Spring Back to Beverley Markets

Stall Holders Wanted!

Are you interested in showcasing your items or products?

Maybe you would like to extend your target audience.

Then get in touch and book a stall at the
2022 Spring Back to Beverley Markets.

Booking forms and information to be obtained by contacting
projects@beverley.wa.gov.au

101.3 FM
VOICE OF THE AVON LOCAL
RADIO PROGRAM



SUNDAY

6.00 – 10.00 Sunday Morning with Terry
10.00 – 2.00 Easy Sunday with Denni
2.00 - 6.00 am Voice of the Avon Jukebox

MONDAY

6.00 – 10.00 Monday Breakfast with Bob
10.00 – 2.00 Monday with Lesley-Ann
2.00 – 4.00 **What's New in Country with John**
4.00 - 7.00 101.3 FM Irish Jukebox
7.00 - 10.00 Classical Sounds with Chris
10.00 – 6.00 am Voice of the Avon Jukebox

TUESDAY

6.00 – 10.00 Tuesday Breakfast with Bob
10.00 – 2.00 Country Roads with Frenchy
2.00 - 5.00 **Rockin' on the Avon with Denni**
5.00 - 7.00 Turn it up Tuesday with Michael
7.00 – 6.00 am Voice of the Avon Jukebox

WEDNESDAY

6.00 - 9.00 Sunny Side Up Breakfast with George
9.00 - 1.00 A Little Bit of Everything with Bob
1.00 - 4.00 Potpourri with Peter
4.00 - 6.00 **John's Jazz Show with John**
6.00 - 9.00 Back to the Future with Frank
9.00 – 6.00 am Voice of the Avon Jukebox

THURSDAY

6.00 - 9.00 Solid Gold Breakfast with Frenchy
9.00 - 12.00 Sing Along Swing Along with KT
12.00 – 3.00 Kaleidoscope with Chris
3.00 - 6.00 Voice of the Avon Jukebox
6.00 - 9.00 **Tonk'n Along with Tonks**
9.00 – 6.00 am Voice of the Avon Jukebox

FRIDAY

6.00 - 10.00 Friday Breakfast with Terry
10.00 - 12.00 Easy Listening with Nick
12.00 – 4.00 **Michael's Mix Up with Michael**
4.00 - 6.00 am Voice of the Avon Juke Box

SATURDAY

6.00 - 9.00 Saturday Breakfast with Frenchy
9.00 - 12.00 Spirit of Music with George
12.00 – 2.00 Country Tracks with Haydn
2.00 - 4.00 Saturday Mix with Graham
4.00 - 6.00 My Kind of Music with Lesley-Ann
6.00 to 6.00 am Voice of the Avon Juke Box

Phone: Studios 9641 2422
Sponsorship: 0408 502 711
E-mail: radio6ycr@hotmail.com

Facebook
Voice of the Avon 101.3 FM – 6YCR

Website
voiceoftheavon.org.au

Effective 19 April 2022.
Changes may be made without notice

BEVERLEY NETBALL CLUB

FAST5 is back

Starting Wednesday 27th April.

Don't miss out, make sure to get your name in to Jo Copping (0438 972 335)

Beverley will once again be sending a team to play in the Northam senior netball competition.

This year we have also got a junior team entering into the Northam competition.

If you are interested in playing or get involved or just want to find out more

information please contact Jo Copping or Cara Hammond (0400 762 889)



Are you interested in the future planning of Health Services in Beverley?

DOES YOUR HEALTH MATTER?

Local Health Advisory Group

Be Involved

Collaborate with local health services to bring about positive change, improving the health and wellbeing of our community

Be Heard

Advocate for health services issues important to you



For more information contact:

Cr Peter Gogol

0403 822 770 or p.gogol@beverley.wa.gov.au



Beverley Lawn Tennis Club

The tennis season closed on April 3rd with our Championship Presentations and AGM held after social tennis. Numbers for the AGM were down on previous years, however a strong committee has been formed for 2022/23 and we look forward to completing our Bathroom Upgrade project in the off season.

Our 88th Annual Easter Tennis Tournament went off without a hitch, and both the Committee and Match Committee are to be commended for the wonderful event. This year saw 189 entrants participate over the four days of Easter. As always, family fun, great sportsmanship and good tennis was on show!

2022/23 Beverley Lawn Tennis Club Committee

President - Chantelle Meade

Vice President - Position Vacant

Secretary - Rebecca Smith

Treasurer - Carissa Shaw

Men's Captain - Position Vacant

Ladies' Captain - Emily Smith

Men's' Vice Captain - Graeme Lewis

Ladies' Vice Captain - Laura McLean

Committee Members - Damien Murray, Chad Vandenberg, Chaise Sattler

Beverley Lawn Tennis Club Championship Results 2021/22

Men's Singles

Champion - Brett Shaw Runner Up - Mitchell Ashworth

Ladies Singles

Champion - Annie Budiselick Runner Up - Carissa Shaw

Men's Doubles

Champions - Marc Edwards & Bruce Kilpatrick

Runners Up - Damien Murray & Mitchell Ashworth

Ladies Doubles

Champions - Carissa Shaw & Jacinta Murray

Runners Up - Emily Miller & Ashleigh Fleay

Mixed Doubles

Champions - Carissa Shaw & Brett Shaw

Runners Up - Marc Edwards & Ali Edwards

88th Annual Easter Tennis Tournament Results

Under 11 Boys Singles

Winner - Matthew Ashworth Runner Up - Archie Gethin

Under 11 Girls Singles

Winner - Greta Gethin Runner Up - Abbey Hinchcliffe

Under 11 Doubles - Group A

Winners - Noah Shaw & Matthew Ashworth

Runners Up - Abigail Bailey & Archie Gethin

88th Annual Easter Tennis Tournament Results

Under 11 Doubles - Group B

Winners - Taj Wenn & Lleyton Irvine

Runners Up - Teale Cutts & Khaleen Cutts

Under 14 Boys Singles

Winner - Curtis Tranchita Runner Up - Coby Scari

Under 11 Boys Singles

Winner - Matthew Ashworth Runner Up - Archie Gethin

Under 11 Girls Singles

Winner - Greta Gethin Runner Up - Abbey Hinchcliffe

Under 11 Doubles - Group A

Winners - Noah Shaw & Matthew Ashworth

Runners Up - Abigail Bailey & Archie Gethin

Under 11 Doubles - Group B

Winners - Taj Wenn & Lleyton Irvine

Runners Up - Teale Cutts & Khaleen Cutts

Under 14 Boys Singles

Winner - Curtis Tranchita Runner Up - Coby Scari

Under 14 Doubles

Boys

Winners - Max Hill & Zac Hill

Runners Up - Reaghan Murray

Girls

Winners - Emma Kilpatrick & Ruby Murray

Runners Up - Bella Mellick & Reagan Wenn

Under 14 Mixed Doubles

Winners - Reaghan Murray & Bella Mellick

Runners Up - Hugh Fairclough & Emma Kilpatrick

Over 45s Men's Doubles

Winners - Scott Power & Paul Wenn

Runners Up - Rob de Gruchy & Trevor Metcalf

Over 45s Mixed Doubles

Winners - Darryl Power & Denise Shevlin

Runners Up - Rob de Gruchy & Dina Barrett-Lennard

Handicap Men's Singles

Winner - Lachlan McLean Runner Up - Daniel Roach

Handicap Ladies Singles

Winner - Shelby Tranchita Runner Up - Hannah Bowden

Handicap Men's Doubles

Winners - Daniel Germinario & Ian Loxton

Runners Up - David Irvine & Jack Mills

Handicap Ladies Doubles

Winners - Grace Fisher & Anneliese Mellick

Runners Up - Michaela Miller & Skye Palmer

Handicap Mixed Doubles A Grade

Winners - Dwayne Augustin & Karen Hinchcliffe

Runners Up - Brent Palmer & Skye Palmer

Handicap Mixed Doubles B Grade

Winners - Aaron Smith & Emily Smith

Runners Up - Declan Kilpatrick & Paige Tiller

Championship Men's Singles

Winner - Shaun Moore Runner Up - Paul Wenn

Championship Ladies Singles

Winner - Alice Stevens Runner Up - Alfee Stevens

Championship Men's Doubles

Winners - Tomas Devereux & Shaun Moore

Runners Up - Peter Devereux & Salvador Devereux-Dix

Championship Ladies Doubles

Winners - Claire Atley & Jo Hill

Runners Up - Amanda Irvine & Kathryn Bellis

Championship Mixed Doubles

Winners - Tomas Devereux & Alfee Stevens

Runners Up - Brett Hill & Jo Hill

Proudly Sponsored By

BEVERLEY
Transport



R&Lhiabservices



Department of
Primary Industries and
Regional Development

Backyard Buddies

Your monthly guide to pests, weeds & diseases

May 2022

On the chopping block



From left to right: wood boring larvae on chopping block and next to ruler. Native longicorn beetle, *Phoracantha semipunctata*

Surprise finds

Considering lighting the fire to keep warm this winter? If so, you might notice wood boring larvae when splitting your native timber firewood. Do not worry, despite the similar looking appearance of boring beetle larvae, these are not the European house borer (EHB) and pose no risk to your home. They do however, make great snacks for birds!

Pictured in this article are the wood boring larvae of native Longicorn beetles, also referred to as longhorned beetles due to their long, serrated antennae. The native Eucalyptus longicorn beetle, *Phoracantha semipunctata* is the most reported species to our service.

The adult beetle lays eggs under bark or in cracks of host trees such as jarrah, *Eucalyptus marginata* and marri, *Corymbia calophylla*. The larvae hatch and bore into the tree and tunnel through the wood. Once large enough, they chew an escape tunnel to the wood surface, plug it to prevent predators entering, and chew a larger chamber to pupate into an adult beetle. The beetle emerges from the wood by chewing through this plug.

The life cycle from egg to adult is poorly understood in south-western Australia but may be <1 year.

If you have been chopping firewood for years but are only starting to see these borers, it's likely the trees your firewood has been collected from are under increasing stress. Borers are predominantly secondary pests and drought stressed forests are highly susceptible to borer attack.

If you want to learn more about these native borers, browse the internet to find some great research papers through Murdoch University in WA. If you want more information about EHB, visit agric.wa.gov.au and search 'EHB'.

Reporting

We can't all be insect identification specialists, and it's hard to know what's common and what's not, but if something isn't common or familiar to you, please report it. Make reports particularly valuable by including as much information as possible about the signs and symptoms you are seeing. Collect and hold onto samples of suspect insects whilst awaiting identification, and if taking photos, include things like a ruler or a pen in the photos so the dimensions of things can be gauged.

If borers are coming out of furniture, timber, wooden platters, bowls, or ornaments – report it, and we will provide identification services and guidance from there.

Report suspect pests



MyPestGuide™ Reporter
via app or online
mypestguide.agric.wa.gov.au



Pest and Disease Information Service
(08) 9368 3080
padis@dpird.wa.gov.au

The Beverley Inkosi Design Redbacks had a successful season and played finals crickets again this season.

Sunday 19th December 2021
Beverley 4 for 196 defeated Tammin 4 for 155

Beverley Batting: Dale Wansbrough 101 (retired), Beau McLean 57, Kodie Fleay 13
Tammin Bowling: Curtis Mackin 2 for 34, Luke Button 1 for 14
Tammin Batting: Cory Dixon 71 not out, Isaac Stokes 21, Nick Caffell 20 not out
Beverley Bowling: Jarryd Morton 2 for 12, Khyle Ugle 1 for 17, Stephen Gollan 1 for 18

With no club cricket being played in January it was time for representative cricket in which several Beverley players participated in.

Luke Gollan was selected to play for Inswing Inswingers in the Albany Southern Smash T20 cricket carnival, from 28th to 29th December. There were 6 teams competing with players from around the state being drafted into each team.

Luke performed well, along with his team mates to take out the final and win Back to Back titles. Scores were Inswing Inswingers 2 for 98 defeated Elders Avengers All Out for 95

Luke Gollan

<i>Batting:</i>	45 Runs	15 Average	Highest Score 18
<i>Fielding:</i>	3 Catches	4 Stumpings	1 Run Out

Senior Country Week was held from 16th to 21st January. Avon played in C Section and Beverley was represented by James Adams, Khyle Ugle and Liam Gollan. Avon played some great cricket and missed out on making the final by 0.80 of a point.

James Adams

<i>Batting:</i>	174 Runs	43.50 Average	Highest Score 92
<i>Bowling:</i>	23.3 Over's	4 Wickets for 106 Runs	Best Bowling 4/49
<i>Fielding:</i>	1 Catch		

Khyle Ugle

<i>Batting:</i>	78 Runs	15.60 Average	Highest Score 78
<i>Bowling:</i>	3 Over's	1 Wickets for 20 Runs	Best Bowling 1/20
<i>Fielding:</i>	2 Catches		

Liam Gollan

<i>Batting:</i>	65 Runs	32.50 Average	Highest Score 38
<i>Bowling:</i>	10 Over's	2 Wickets for 20 Runs	Best Bowling 1/6
<i>Fielding:</i>	1 Catches	1 Run Out	

Saturday 29th January 2022
Beverley 6 for 173 drew with York 0 for 4
(Match Abandoned Rain)

Beverley Batting: James Adams 55, Beau McLean 35, Dale Wansborough 20
York Bowling: Troy Stone 2 for 29, Andrew Jenkinson 1 for 25
York Batting: **Terry O'Brien 2 not out, Mike Mount-Bryson 1 not out**
Beverley Bowling: Dale Wansborough 0 for 4

Saturday 5th February 2022
Beverley 3 for 194 defeated Brookton 8 for 118

Beverley Batting: Kodie Fleay 89 not out, Stephen Gollan 34 retired, Mitchell Ashworth 29
Brookton Bowling: Vaughan Baker 2 for 52, Tim Evans 1 for 22
Brookton Batting: Vaughan Baker 23, Tim Evans 22, Chris Hartl 20
Beverley Bowling: Kodie Fleay 2 for 3, Beau McLean 2 for 15, James Adams 2 for 17

Saturday 12th February 2022
Beverley 8 for 166 defeated Seabrook All Out for 99

Beverley Batting: Dale Wansborough 67, Stephen Gollan 43, Blake Wansborough 10
Seabrook Bowling: Ryan Sheridan 4 for 11, Jordan Wylids 3 for 24
Seabrook Batting: Dean McIntyre 46, William Bowring 20, Brad Fairbrass 10
Beverley Bowling: Kodie Fleay 5 for 11, Stephen Gollan 2 for 16, Beau McLean 2 for 23

Saturday 19th February 2022
Beverley 5 for 155 defeated Quairading 8 for 119

Beverley Batting: Jarryd Morton 59 not out, James Adams 44, Dale Wansborough 16
Quairading Bowling: Shaun Simpson 2 for 38, Jack Richards 1 for 29, Ciaran Allsop 1 for 4
Quairading Batting: Xavier Stone 39, Declan Mills 29, Brayden Hayes 13
Beverley Bowling: James Adams 4 for 12, Dale Wansborough 3 for 26, Robbie Wansborough 2 for 14

At the end of the end of the qualifying rounds Beverley had finished in 3rd place on the ladder which read;

York 135.18
Tammin 114.43
Beverley 108.85
Quairading 78.18
Seabrook 77.84
Brookton 51.26

This meant that Beverley would need to win every remaining game to defend their title from last season.

Saturday 26th February 2022
1st Semi Final
Beverley 2 for 158 defeated Quairading 6 for 151

Beverley Batting: Khyle Ugle 76 not out, Kodie Fleay 25, Liam Gollan 22, Dale Wansborough 13 not out
Quairading Bowling: Indy Squires 1 for 28, Brendan Simpson 1 for 38
Quairading Batting: Brendan Simpson 63, Brayden Hayes 44, Declan Mills 21 not out
Beverley Bowling: Dale Wansborough 4 for 28, Kodie Fleay 1 for 23, Liam Gollan 1 for 24

Saturday 5th March 2022
Preliminary Final
Beverley All Out for 73 lost to Tammin All Out for 162

Beverley Batting: Beau McLean 37, James Adams 13
Tammin Bowling: Jon Arnott 4 for 25, Curtis Mackin 2 for 34
Tammin Batting: Isaac Stokes 65, Josh Axccl 35, Cory Dixon 16
Beverley Bowling: Shane White 3 for 11, Dale Wansborough 3 for 17, Beau McLean 2 for 18

The Beverley boys could hold their heads up high after losing to Tammin in the Preliminary Final as we only had 9 players available for this game due to illness and players having other commitments.

The club did have a successful season and look forward to improving next season to hopefully once again push for a Premiership.

Association Awards Winners for the 2021/22 season were won by the following:

Batting Aggregate	Mike Mount-Bryson	(York CC)	372 runs
Batting Average	Kodie Fleay	(Beverley CC)	38.83
Bowling Aggregate	Andrew Jenkinson	(York CC)	30 wickets
Bowling Average	Andrew Jenkinson	(York CC)	5.53
Most Catches	Luke Button	(Tammin CC)	12
Best Player Country Week	James Adams	(Beverley CC)	

Beverley Award Winners are:

Club Champion (Warkie Ugle Memorial Trophy)	Dale Wansborough
Best Batsman	James Adams
Best Bowler	James Adams



The club would like to thank all our supporters who have come along and watched games and special thanks to our major sponsor in Graham and Fleta "Inkosi Design" who have continued to support to the club for a number of years.

Mention must also be made to the Shire of Beverley along with Mal Kehlet, Connor Devenish and his helpers for their efforts in maintaining the best ground and wickets in the Wheatbelt.

The Beverley Cricket Club now looks forward to the 2022 / 2023 season, with a hope of a successful season again.

Beverley Cricket Club

2021/22 Bowling

Regular Season

Player	Overs Bowled	Wickets	Maidens	Runs	Average	Best Bowling
Adams, James	90.3	18	12	286	15.89	6/13
McLean, Beau	65.4	12	10	176	14.67	4/26
Gollan, Stephen	90	11	22	179	16.27	2/10
Wansborough, Dale	78.1	11	24	187	17.00	3/32
Morton, Jarryd	47	8	3	188	23.50	2/12
Fleay, Kodie	22.4	7	3	109	15.57	5/11
Gollan, Liam T	14.1	3	3	47	15.67	2/41
Price, Steve	0.3	1	0	2	2.00	1/2
Ballantyne, Jack	1	1	0	10	10.00	1/10
Ugle, Khyle	9	1	0	30	30.00	1/15
White, Shane	1	0	0	9		0/9
Cleland, Digby	2	0	0	12		0/12

Bowling Final Series

Player	Overs Bowled	Wickets	Maidens	Runs	Average	Best Bowling
Wansborough, Dale	19	7	4	45	6.43	4/28
White, Shane	1.5	3	0	11	3.67	3/11
McLean, Beau	9	2	1	18	9.00	2/18
Fleay, Kodie	5	1	0	23	23.00	1/23
Gollan, Liam T	17	1	3	64	64.00	1/24
Adams, James	20	1	1	84	84.00	1/54
Cleland, Digby	2	0	0	19		0/19
Morton, Jarryd	4	0	0	20		0/20
Gollan, Stephen	9	0	1	23		0/23

Beverley Cricket Club

Fielding 2021/22

Player	Catches	Wicket Keeping Catches	Run Outs
Ashworth, Mitchell	4	7	2
McLean, Beau	5	0	0
Wansborough, Dale	4	0	5
Morton, Jarryd	4	0	0
Adams, James	4	0	2
Cleland, Digby	4	0	1
White, Shane	3	0	1
Gollan, Stephen	3	0	2
Fleay, Kodie	2	0	0
Wansbrough, Blake	2	0	0
O'Meagher, Blake	2	0	0
Ugle, Khyle	2	0	0
Sattler, Josh	1	0	0
Gollan, Liam T	1	0	0
Marshall, Simon	1	0	0
Gollan, Luke J	0	2	2
Price, Steve	0	0	1
Carton, Dan	0	2	0

Beverley Cricket Club

Batting Partnerships 2021/22

WICKET	BATSMEN	PARTNERSHIP	AGAINST
1st Wicket	Kodie Fleay James Adams	169	Brookton
2nd Wicket	Stephen Gollan Beau McLean	67	York
3rd Wicket	Stephen Gollan Dan Carton	50	Seabrook
4th Wicket	Beau McLean Dale Wansbrough	159	Tammin
5th Wicket	Dale Wansbrough Stephen Gollan	89	Seabrook
6th Wicket	Beau McLean Digby Cleland	18	York
7th Wicket	Stephen Gollan Mitchell Ashworth	24	York
8th Wicket	Stephen Gollan Blake Wansbrough	13	York
9th Wicket	Digby Cleland Blake Wansbrough	21	York
10th Wicket	Digby Cleland Blake O'Meagher	20	Quairading

Beverley Cricket Club

2021/22 Batting

Regular Season

Player	Innings	Total Runs	Not Outs	Highest Score	Average
Adams, James	12	247	0	81	20.58
Wansborough, Dale	10	233	3	101	33.29
Fleay, Kodie	8	233	2	89	38.83
Gollan, Stephen	9	226	1	43	28.25
McLean, Beau	8	195	0	57	24.38
Ashworth, Mitchell	10	113	6	40	28.25
Morton, Jarryd	8	93	2	59	15.50
Cleland, Digby	8	61	3	20	12.20
Carton, Dan	2	46	0	33	23.00
Wansbrough, Blake	4	46	1	22	15.33
White, Shane	6	39	2	23	9.75
O'Meagher, Blake	7	23	4	9	7.67
Gollan, Luke J	1	19	0	19	19.00
Gollan, Liam T	3	13	0	6	4.33
Price, Steve	4	11	1	7	3.67
Ballantyne, Jack	2	5	0	5	2.50
Ugle, Khyle	3	1	0	1	0.33
Marshall, Simon	1	0	0	0	0.00
Fleay, Jake	2	0	0	0	0.00
Sattler, Josh	1	0	0	0	0.00

Batting Final Series

Player	Innings	Total Runs	Not Outs	Highest Score	Average
Ugle, Khyle	1	76	1	76	
McLean, Beau	1	37	0	37	37
Fleay, Kodie	1	25	0	25	25
Gollan, Liam T	2	23	0	22	12
Adams, James	2	21	1	13	21
Wansborough, Dale	2	15	1	13	15
Cleland, Digby	1	9	0	9	9
White, Shane	1	5	0	5	5
O'Meagher, Blake	1	4	0	4	4
Price, Steve	1	0	1	0	
Ashworth, Mitchell	1	0	1	0	0

Beverley Cricket Club

Club Champion 2021/22

Player	Matches Played	Points
Wansborough, Dale	11	67.3
Adams, James	12	66.7
Fleay, Kodie	8	49.3
McLean, Beau	11	48.5
Gollan, Stephen	12	43.6
Morton, Jarryd	12	33.3
Ashworth, Mitchell	12	30.3
Cleland, Digby	10	14.1
O'Meagher, Blake	11	8.3
White, Shane	6	7.9
Gollan, Luke J	1	7.9
Wansbrough, Blake	6	7.6
Carton, Dan	3	6.6
Gollan, Liam T	5	5.3
Ugle, Khyle	6	3.1
Price, Steve	4	3.1
Ballantyne, Jack	3	1.5
Marshall, Simon	1	1
Sattler, Josh	3	1
Gollan, Daniel	1	1
McLean, Matt	1	1
Murray, Stuart	1	1
Fleay, Jake	2	1

LOCAL CLUB/GROUP CONTACTS



Group/Club/Association	Contact	
Adult Horse Riders Social Group	Marie Hammond	0447 121 014
Anglican Parish of Beverley-Brookton	Priest: Philip Rayment	0419 177 178
Beverley & Districts Motorcycle Club	Anthony Fiaschi	0419 993 232
	Greg Offer	0428 120 003
Beverley Agricultural Society	President: Mick Martin	0408 950 043
	Secretary: Sue Martin	0427 771 054
Beverley Amateur Dramatics (BAD Drama Club)	Committee Contact: Britt Hadlow	0447 811 267
Beverley Amateur Swimming Club	President: Amanda Farr	0407 389 642
	Secretary: Rebecca Burglass	0422 433 434
Beverley Badminton Club	Captain: Cara Hammond	0400 762 889
Beverley Bowling & Croquet Club	President: Jeff Murray	
	Ladies Capitan: Lyn MacTaggart	0439 461 634
	Mens Capitan: Daniel Fleay	0458 088 674
Beverley Community Garden	Betty Lobb	0400 569 971
	Dorothy Sampson	0429 989 031
Beverley CWA	President: Pat Hambly	9646 1481
	Secretary: Sam Mearns	0447 160 076
Beverley DHS P&C	President: Bruce Kilpatrick	0428 464 006
Beverley Football & Netball Club	President: Robbie Wansborough	0428 843 251
	Secretary: Blake O'Meagher	0499 166 160
	Committee Contact: Jayde Creedon	
	League Coach: Kodie Fleay	0418 929 141
	Reserves Coach: James Adams	0429 461 000
Beverley Garden & Tree Society	President: Lyn Murphy	0418 282 674
	Secretary: Dorothy Sampson	0429 989 031
Beverley Golf Club	President: Darryl Hagan	
	Mens Capitan: Marc Edwards	
	Ladies Capitan: Jane Murray	
Beverley Historical Society	President: Joy Smith	0427 411 881
	Secretary: Morag Whitney	9646 1075
Beverley Horse & Pony Club	President: Lisa Maxwell	0408 902 701
	Secretary: Tess Hawke	0419 879 310
Beverley Hospital Auxilliary Inc./OP Shop	President: Glenys Lane	0437 807 454
Beverley Junior Sports	President: Mark Bickley	0459 655 027
	Secretary: Jo Copping	0438 972 335
	Football Coordinator: Brett Shaw	0427 481 028
	Netball Coordinator: Sharlee Higgins	0426 881 080
	Cricket Coordinator: Brad Copping	0400 383 664
	Hockey Coordinator: Kelly Mann	0428 779 234
Beverley Lawn Tennis Club	President: Chantelle Meade	0429 418 576
	Secretary: Rebecca Smith	0428 805 681
Beverley Men's Shed	President: Harvey Morrell	0427 235 681
	Secretary: David Winkle	0429 873 474
Beverley Naturalists Club	Phyllis Facey	9646 1469

Beverley Netball Club	President: Nat Ashworth	
	Secretary: Laura O'Meagher	0417 973 731
Beverley Off Road Motor Sports Assoc	Cheryl Simson	0409 205 551
Beverley Patchwork & Quilters	Jan Sherwood	0438 019 510
Beverley Playgroup	President: Kelly Aaron	0400 772 081
	Secretary: Melissa Blechynden	0429 504 963
Beverley Redbacks Hockey Club	Secretary: Britt Hadlow	0447 811 267
Beverley Soaring Society Gliding Club	President: Geoff Overheu	0407 575 216
	Secretary: Piero Velletri	0417 045 437
Beverley Station Arts	President: Jenny Broun	0419 040 063
	Secretary: Sarah Miller	0427 464 078
Beverley Toy Library	President: Kelly Mann	0428 779 234
	Secretary: Skye Carlhausen	0438 353 634
Clay Target Club	Secretary: H Henderson	0407 457 427
Cricket Club	President: Stephen Gollan	9646 1200
	Coach: James Adams	0429 461 000
Cropping Committee	Secretary: Stephen Gollan	9646 1200
Dale Community Group	President/Treasurer: Yvonne Hobbs	0438 370 755
Dale River Sports Ground Committee	Secretary: Georgina Beecroft	9647 1089
Friends of the Dale River	Linley Thompson	0429 953 800
	Lisa Blanch	9646 1716
Novus Agri	President: Kelly Mann	0428 779 234
	Secretary: Skye Carlhausen	0438 353 634
Rifle Club		9641 6061
Royal Antediluvian Order of Buffaloes		0419 945 240
Southern Avon Ladies Darts	Monica Camenzuli	0474 105 242
St John Ambulance	Chairperson: Robyn Murray	
	Sub Centre	9646 0646
Top of the Avon Line Dancers	Jan Turrell	0429 952 177



BEVERLEY
Community Markets

SATURDAY 07 May | 2022
8am until 1pm
The Old School building
between PO & Shire building
Gift ideas, fresh produce, crafts,
baked goods and preserves,
woodwork plus sausage sizzle.

For more information, contact Val Tylor 0428 601 416
Proceeds go to the Beverley Junior Sports



**Located behind the Beverley Medical
Practice Cullen House
106 Forrest Street Beverley**

**Open Wed & Fri Only
8 am – 1pm**

All enquiries to the Phlebotomist -
Phone: 9646 0724

*Please note that Western Diagnostic
Pathology will accept all pathology
collection forms.*



Beverley Garden & Tree Society

The April meeting of the Garden club was held in the Dead Finish garden with 15 members present. Prior to the meeting we had a Busy Bee to tidy up the garden in preparation for the Easter Art prize and exhibition. Thank you to those members who assisted. Much of the discussion centred around this year's Rose Show with a suggestion that we include some advice on care of your roses so that we can have a bumper amount of entries again. We will also have a showing of the gorgeous quilts made by nimble fingered members of the

Beverley quilting group. Also included this year will be a display of cups and saucers, so let's look in the back of the cupboard and see what gems you can find.

The next meeting on the 3rd of May and will be replaced by a visit to Busy Bees apiary. We will be meeting at the Dead Finish to car pool.

Now for the rose care:

July

Depending upon the rose, it takes approximately 42-50 days for Hybrid Teas to produce blooms, 50-55 days for Floribundas and 35-40 days for Miniatures, so time the pruning of your bushes to coincide with the time that you want the blooms.

After pruning, rub off any eyes, which are growing inwards as this saves time cutting them out at a later date.

When you have finished pruning your rose bushes, spray all over, including the garden bed, with Lime Sulphur, mixing 20ml to 1 litre of water. This will clean up any fungal spores and bugs.

If your roses are in pots, repot them if they are not doing well.

August

When the roses start pushing out new growth to a couple of centimetres, feed with Sudden Impact and mulch with organic mulch.

Continue to rub off any eyes, which are growing inwards (finger pruning).

September

Aphids can start appearing very early in September so you need to start spraying for them early in the month with Eco Oil.

Foliar feed with Seasol or Fish Emulsion every 2 weeks. This can be added to your spray when spraying for bugs.

Thrips start attacking your roses when the buds appear, which is usually closer to the end of September, so you will also need to commence spraying your buds and leaves fortnightly with Insecticidal Soap or Neem Oil.

Continue with foliar feeding but now change to Fruit and Flower so that you don't stain the petals.

If you see the first signs of Powdery Mildew, spray with either Rose Shield or Triforine (good for Mildew, Rust & Black Spot).

Commence disbudding.

Dust with Lime Sulphur.

As rains taper off, commence watering.

October

Spider mites can start appearing now so if you notice them you will need to spray weekly with Eco Oil or Spider Mite Spray for 3 weeks to get rid of them.

Continue foliar feeding every 2 weeks with Fruit and Flower.

This is the time when the plants start producing their main flush of spring blooms.

Water shoots (new growth) that come off the union at the bottom of the plant or low down on branches, grows quickly and they are soft, so you need to put a stake in and tie up to prevent wind damage.

Mulch with organic mulch if needed before the summer heat.

If you are showing your blooms, take off the side buds of Exhibition roses and take the centre one out of your Floribundas.

Take off any spent blooms.

EVENTS 2022

EVENT	DATE
LHAG Workshop	4 May
Festival of Small Halls	4 May
Community Markets	7 May
Pruning Fruit Trees Workshop	24 May
BEVERLEY AGRICULTURAL SHOW	20 August
Spring Back to Beverley	24 - 25 September
Beverley Rose Show	21 - 22 October

The flag was flown at half-mast on the Beverley Town Hall as a mark of respect to:-

- Margaret Joan Barrett-Lennard
- William (Bill) Hill
- Sylvia May Nicholls

Emergency Medical Information Book

This useful book contains all a person's information and medicals record needed if, or when, an ambulance is called, and they need to be transported to a hospital. The Emergency Medical Information Book Available for a \$2 donation at Beverley Farm Services.

Support your local groups

BEVERLEY BLARNEY

900 copies each month

Community notices are free of charge

The deadline for the next

Beverley Blarney is 4pm

Sunday 22 May 2022

Contact our friendly Shire staff today

Shire of Beverley

PO Box 20 Beverley WA 6304

Phone: 9646 1200

Email: blarney@beverley.wa.gov.au

Online editions: beverley.wa.gov.au

DISCLAIMER

The information in this publication is of a general nature as a service to the ratepayer. The articles included herein are not intended to provide a complete discussion of each subject. While the information is believed to be correct, no responsibility is accepted for its accuracy. No liability is accepted for any statements of opinion or any error or omission.

Do you want to advertise in the
Beverley Blarney?

Advertising Rates

As at 1 November 2021

Monthly Advertising

Full Page	185 x 268mm	\$182
Half Page	185 x 133mm	\$96
Quarter Page	92 x 133mm	\$47
Eighth Page	60 x 87mm	\$29
Trade Advert	60 x 45mm	\$8

Annual Advertising

Full Page	185 x 268mm	\$1,820
Half Page	185 x 133mm	\$960
Quarter Page	92 x 133mm	\$470
Eighth Page	60 x 87mm	\$290

Electronic format is preferable:

With a .doc (Word Document), .pdf (Adobe), .png or .jpeg extension

MAY 2022

SUNDAY	MONDAY	TUESDAY	WEDNESDAY	THURSDAY	FRIDAY	SATURDAY
1 Clay Target Club	2 Weight Watchers Yarns & Yarns Bridge	3 Beverley Garden & Tree Society Meeting 10.30am	4 Golf Scroungers Active Farmers Croquet Badminton CWA Community Morning Tea Net Set Go Training	5	6 Op Shop Adoration and Mass – 2.30pm Sacred Heart Church CWA Mother's Day Raffle Jnr Footy/Netball Training/Scratch Matches	7 Community Markets Op Shop Auskick Training
8 Mass – 8.00am Sacred Heart Church MOTHER'S DAY Football in York	9 Dead Finish Museum Meeting 9.30am	10 Mens Shed Quilting Stay Active	11 Golf Scroungers Active Farmers Croquet Badminton Net Set Go Training	12	13 Recycle Bin Golf Scroungers Croquet	14 SAMBA Football Beverley Junior Sport in Beverley
15 Mass – 8.00am Sacred Heart Church	16 Weight Watchers Yarns & Yarns Bridge	17 Mens Shed Quilting Stay Active	18 Golf Scroungers Active Farmers Croquet Badminton Net Set Go Training CWA Meeting	19	20 Golf Scroungers Croquet Jnr Footy/Netball Training/Scratch Matches	21 SAMBA Op Shop Auskick Training
22 Mass – 8.00am Sacred Heart Church BLARNEY DEADLINE	23 Weight Watchers Yarns & Yarns Bridge	24 Mens Shed Stay Active Quilting COUNCIL MEETING	25 Golf Scroungers Active Farmers Croquet Badminton Net Set Go Training	26	27 Recycle Bin Golf Scroungers Croquet Op Shop Jnr Footy/Netball Training/Scratch Matches	28 SAMBA Football in Northam Auskick Training
29 Mass – 8.00am Sacred Heart Church	30 Weight Watchers Yarns & Yarns Bridge	31 Mens Shed Quilting Stay Active				