



BEVERLEY BLARNEY

Edition 450 April 2022 No Charge

BEVERLEY ART PRIZE and 53rd ANNUAL EASTER ART EXHIBITION



**Thursday 14 to Monday 18 April 2022
Beverley Town Hall**

**PREVIEW ONLY (no sales)
Thursday 14 April 10am-4pm**

OFFICIAL OPENING Thursday 14 April 7pm-9pm

**Other Opening Times
Fri 14 April to Sun 17 April 10am-4pm
Monday 18 April 10am-2pm**

**Admission to Official Opening
A\$10 U18 \$5 includes one drink**

Major Sponsor: Shire of Beverley

**Admission at other times
Adults \$2 Children \$1 Family \$5**

Artwork: 2021 Overall Winner "Treehouse by the Sea 1" by El mari Steyn

Proof of vaccination required upon entry to Beverley Town Hall



SHIRE OF BEVERLEY PRESIDENT'S REPORT



Vincent Street Streetscape Project

It was Robert Burns who said "The best laid plans of mice and men often go awry."

The Vincent Street project is proof of this. As of last writing, the plan that had been firmed up with GHD and the contractors was that Vincent Street would receive its first seal of bitumen on 31st March 2022. It was agreed that it would only be due to totally unforeseen circumstances that would cause any delay.

Hardly had this been agreed than two of the employees tested positive for Covid meaning the whole team had to return to Perth to isolate for seven days. The grader recommenced work again on Monday 21st March when another operator was engaged to replace the one with Covid. It is expected that all other employees will return after their seven days to carry on with all the tasks needed to complete this stage of the Street.

The sealing date of 31st March 2022 has now had to be deferred until 4th April 2022. Again, this is dependent upon the contractor engaged to carry this out not having any Covid issues within that organisation. Presently, the Main Roads task of completing the intersection on Hunt Road appears to have been delayed, possibly for this reason?

At the Council meeting on 22nd March, it was stressed that completion of first sealing, and the opening up of Vincent Street with the removal of fencing for Easter is imperative. MG Group who are carrying out this task have assured Council that it is an imperative for them as well because every day of delay on this part of the project has the potential to push out the final completion date.

As of writing this report, there is now another unknown weather factor being ex-cyclone Charlotte.

If it appears that excuses are being offered for these delays, I can assure the community that such events as have occurred have been outside everyone's control and it is as frustrating to the Council and all contractors as it must be to the community to whom we offer our apologies. We recognise that delays are also impacting upon businesses and as far as possible it is important for all of us to continue supporting all our businesses during this period.

To provide some assistance, the Shire and Men's Shed have co-operated in providing volunteers to assist shoppers in whatever manner possible, particularly in relation to trolleys. This assistance will remain in place until the first sealing has been completed and the fencing removed and we thank all volunteers for this service.

Burning Restrictions

BURNING DURING APRIL

The Restricted Burning Period is due to finish on 31st March 2022.

No Permit to Burn is required from April 1st however all caution and consideration of weather conditions both at the time of your burn and in the days afterwards should be exercised to prevent your burn from becoming an expensive escape.

NO BURNING of paddocks or bush is permitted over EASTER from midnight on Wednesday April 13th until midnight on Monday April 18th. A small fire of less than 1 cubic metre is permitted outdoors for cooking or socialising. These small fires must be fully extinguished before they are left unattended and please exercise the proper caution in this current environment.

Cr David White
Shire President

For Lease Office Three @ Cornerstone

Please contact the Shire Office for
leasing and viewing information.
9646 1200 or
admin@beverley.wa.gov.au

Excellent location
and modern facilities

Available from 29 November 2021



Beverley Landfill Site Opening Hours

Saturday

8.00am – 4.00pm

Sunday

8.00am – 4.00pm

Monday**

8.00am – 3.30pm

****Please Note:
EARLIER CLOSING TIME**

**CLOSED Christmas Day
and Total Harvest Ban Days**

BEVERLEY SUB CENTRE NEWS



Do you have a query about your Benefit Fund renewal or a St John invoice that you have received?

If so, you are welcome to come to the sub centre on John Street. We ask that you use the front entrance of the building and use the SafeWA app to scan the QR code. If required, we have a paper register available.

Our office is usually open on Tuesdays and Fridays from 9.00am - 2.00pm. However, there may be occasions when the office is unattended during these times. To assist you in knowing whether or not we are open, our St John banners are now always placed outside the front of the sub centre when we are open.

Alternatively, we can be contacted by email, beverley.subcentre@stjohnwa.com.au, or phone 9646 1408.

St John WA - Beverley looks forward to assisting you with any enquiry you may have.



Proudly Supported by our Major Sponsors

BEVERLEY
Transport



4 DAYS OF ROUND ROBIN MATCHES

BEVERLEY LAWN TENNIS CLUB INVITES YOU TO ENTER

88TH ANNUAL EASTER TENNIS TOURNAMENT

PLAY COMMENCES GOOD FRIDAY 15TH &
ENDS EASTER MONDAY 18TH APRIL.



Online Entries Now Open!

play.tennis.com.au/beverleylawntennisclub/Easter/EasterEntries

Entries Close - April 8th 2022

Enquires to Chantelle Meade 0429 418 576

[or entries@beverleytennisclub.com](mailto:entries@beverleytennisclub.com)



**BEVERLEY GAS +
PLUMBING SERVICES**



Kodie Fleay
0418 929 141

PL9723 GF017690 ABN: 17 599 411 442



EASTER SUNDAY - SUNDOWNER

CALLING ALL PILOTS & CABIN CREW

FIND YOUR BEST TRAVEL ATTIRE AND JOIN
US FOR OUR EASTER CELEBRATION AT THE
CLUBHOUSE

MASTER PANDA - FOOD TRUCK
BAR
APPERTISERS
FROM 6PM



Covid Safety Regulations are in place. Please see our website for full details.
Tournament Website:

<https://play.tennis.com.au/beverleylawntennisclub/Easter>

- Players must be available to play on all **4 days** of the tournament.
- Players may enter a maximum of 3 events.
- Players may enter in both Championship and Handicap events.
- Incomplete entries will not be accepted.
- Entries without payment will not be accepted until payment is made.
- Entries must be made online via the website.
- MY Tennis ID required to enter.
- Trophy presentation at conclusion of play on Monday 18th April.
- As per the BLTC constitution, **please no dogs or pets** at the club.
- As per the BLTC licensing restrictions, no alcohol to be brought into club grounds.
- Age Restricted Events - Refer to Event Details on website for age limits.
- All entrants and spectators require Proof of Vaccination, or a valid exemption.
- **By entering this tournament you are agreeing to abide by the Tournament Conditions on our website.**

TOURNAMENT CONDITIONS

CAMPING AT BEVERLEY

Located at the recreation ground adjacent to the Tennis Club, including the oval and surrounds. Powered and non-powered caravan and tent sites are available.

Camping Fees:

Adults \$5/night

Children (u16) \$3/night

Families (2 adults + immediate children u16) \$15/night

Camping fees are to be paid with your tournament entry fee and a camping permit must be collected from the tournament office upon your arrival in Beverley.

NB: This is a family camping area so please be considerate of others. Noise Restrictions after 10pm

Please be quiet!

AVON
TRADING
Ph: 08 9646 1006
Mobile: 0427 461 006



IGA **the Bottle-O**
Beverley Supermarket & Liquor
122 Vincent Street Beverley
Fresh Fruit & Vegetables
Cold Beer & Wine

With Compliments
T-BONE & SONS
PH 9646 1121
Beverley WA • 105 Vincent St
PH 9937 1030
Kalbarri • Porter St



Remember to tag us on social media #bltceaster2022 @beverleytennisclub

Beverley Ag Museum News

After last months 'gardening' around the outside of the Museum the volunteers were grateful to be back 'on home soil' pursuing maintenance and restoration inside of the Museum, so it was hoses at 20 paces on Saturday 19th of March when we endeavoured to 'freshen up' the Beverley Shire Agricultural collection.

Paul, John A and John Hawke lead the charge, getting rid of the dust and bird droppings while trying to avoid getting ourselves (and Bob who was showing his Brother-in-law around) wet. Trevor had come to stay over the weekend and was kind enough to assist Bob with cleaning out the sliding door channels before their wives came to see what entices grown men to such a place, as expected both Trevor and his wife were impressed, and hopefully we may see more of Trevor in the future.



Once John Hawke had put his Fire Fighting trailer to bed outside, he 'fired up' and showed our guests one of the Chamberlin Tractors running, yes, it is a working collection, although some of us prefer to sit and chat rather than work sometimes.

And the four of us did sit and nattered while sharing our morning tea before Paul's eyes focused on the J series Bedford Truck, given a new battery and a whiff of a 'starting assistance spray' she grumbled into life, yes, the grumbling was from the noisy water pump, (a job on the list) which was not considered too worn that Paul and Bob could not take her for a well overdue run.

With the basic cleaning out of the way now, more improvements are now planned, research for parts for both the Bedford (water pump) and C 30 International Truck restoration are on our agenda at future visits.

If you are at all interested in joining our group or have knowledge to share about the collection, please feel free to contact John Alexander on 9646 0768 or email Pat.John.inoz@bigpond.com

John Alexander---Volunteer





Beverley RSL Sub Branch

ANZAC Day

There will be a Commemorative Service at the Memorial,
commencing at 0600hrs.

Please be in attendance by 0550am.

Members of the public are welcome to lay a wreath or flowers.

Following the Service there will be the Gunfire Breakfast at the RSL Hall,
50 Forrest St, Beverley.

All welcome

For all enquiries and further info, please contact the President on
0424 361 043



*Does your Community Group
need Fundraising
Opportunities?*

**Is your Community Group interested in being
involved (fundraising opportunities) in the
Beverley Agricultural Show?**

Contact the Sue Martin, our Secretary, on the
below details:
beverleyagsociety@gmail.com or 0427 771 054

**to be added to our Community Group Register to
be notified of any opportunities that arise.**



*Would you like to join us and make a
difference in your local community?*

**We are looking for a range of volunteers to join
us in preparation for the Beverley Agricultural
Show.**

**We rely heavily on volunteers to help coordinate
all aspects of the Beverley Agricultural Show.**

Contact the Sue Martin, our Secretary, on the
below details:
beverleyagsociety@gmail.com or 0427 771 054





Department of
Primary Industries and
Regional Development

Backyard Buddies

Your monthly guide to pests, weeds & diseases

April 2022



Common critters: Grasshoppers

(First image) Adult *Valanga irregularis*, (second, third image) juvenile *Valanga irregularis*, (fourth image) Adult Australian plague locust.

On the hop!

Did you know that all locusts are grasshoppers...but not all grasshoppers are locusts? Grasshoppers and locusts are part of the order known as Orthoptera, meaning 'straight-winged'. Grasshoppers are plant-eating insects with long hind legs, specialised for jumping and which also produce their well-known 'chirping' sound. The term 'locust' simply refers to grasshoppers which can breed and feed within large groups (swarms) from time to time, and therefore having the potential to cause extensive damage to surrounding vegetation.

Trending natives

People mostly tend to see the giant Australian grasshopper (*Valanga irregularis*) and the Australian spur-throated locust (*Austracris guttulosa*) in suburban gardens. Although these species are usually found across Northern Australia from Carnarvon to Northern NSW, they have happily taken up residence in the Perth, Peel and South-west regions during the last decade. Both species have very large bodies in their adult stages, ranging between 5-7 centimetres in length, with long back legs and a throat spur. Adults can live up to 12 months. The females lay their eggs in the soil in late spring, and after hatching, the nymphs change colour with each moult and can vary from shades of light green to spectacular reds with blue stripes. The adults are characterised by a strong patterned body colour, white strip on the top of their thorax, dark coloured antennae and red spines (spurs) with black tips on their hind legs.

Giant Australian grasshoppers and spur throated locusts are often mistaken for the Australian Plague Locust (*Chortoicetes terminifera*) that usually inhabit pastoral regions in relatively low numbers but can increase in in population greatly with favourable weather conditions. Adult Australian plague locusts are between 2.5-4 centimetres and vary in colour from light to dark shades of green and brown. They have a distinct dark blotch at the outer edge of the hind wing, and the inside of their hind legs are red in colour. Australian plague locusts are rarely seen outside agricultural settings.

Control

Chemical control is rarely effective on these chirpy chompers. Thankfully, you usually only require a healthy garden environment to keep their numbers at bay. Young grasshoppers especially, are eaten by a wide variety of predators like birds and reptiles which control their juvenile stages. They can also be parasitised by mites, native solitary wasps, flies and nematodes. Hand removal and placing the grasshoppers in the freezer for 3 hours would be the easiest method of control if you are wanting to control adult grasshoppers. Make sure to wear strong gardening gloves as the spines on their hind legs may be sharp!

If you see an unfamiliar grasshopper, report it! If there are many, try and find the largest ones as the adults are more distinctive than the nymphs. Take clear photos of the leg and body markings, antennae colour and include a ruler, pen or coin so we can understand its' size!

Report suspect pests



MyPestGuide™ Reporter
via app or online
mypestguide.agric.wa.gov.au



Pest and Disease Information Service
(08) 9368 3080
padis@dpird.wa.gov.au



BEVERLEY C.W.A



Well, another month has gone by. The Easter bunny is on his way with all that chocolate, yummy!!!

Last meeting a new member joined our branch. Welcome and hope you enjoy being a part of the C.W.A.

We would like to say thankyou to David Pass for auditing our books and for the donation that you made. We appreciate your kind generosity towards our branch that you make each year, and we can't thank you enough.

As we all know Easter is coming. This year the C.W.A will once again be holding a Easter Raffle on Saturday 16th April at the Lions Kiosk. **But wait there's more! We will also have a CAKE STALL.** All that delicious home cooking waiting to be brought. So come on down, buy a raffle ticket and some home-made goodies. We will be there at 8.30 till 1pm.

Sitting at home wondering what you can do, why not come down to the C.W.A rooms on Wednesday 6th April at 10.00am. Come and have a laugh, cup of tea, something to eat. Just a fun morning out and a chance to catch up.

After we survive all that chocolate at Easter, our next meeting is on the 20th of April, 9.30 morning tea and meeting at 10am, when we start planning our next project.

For more information or want to hire the rooms? Call our President Pat Hambly 08 9646 1481.

Until next time stay safe, Happy Easter and enjoy the chocolate.





Beverley District High School

Independent Public School

Successful, Supportive, Sustainable

For more information about the school, visit our website and Facebook page!

FACTION SWIMMING CARNIVAL

We had another fantastic day at this year's Faction Swimming Carnival. The competition and sportsmanship was exemplary as our students fought hard for their factions! Our parent community offered such great support in volunteering on the day to ensure the smooth running of this event. A huge THANK YOU to the Beverley Shire and to our Pool Manager Brad Miller for once again providing us with such a wonderful facility. Your support is invaluable and greatly appreciated. Thank you to the Beverley Early Years Group who ran a Sausage Sizzle Fundraiser at the carnival to support our students and families.



Faction Carnival Results 1st Dale, 2nd Eyre and 3rd Forrest

Our Medal winners on the day fought hard and were sensational in the water!

CONGRATULATIONS!!!!

Central Districts Academy Plate

Congratulations to Burke, Noah, Pippa and Abigail for representing the school in the Central Districts Academy Plate on the 23rd February 2022. This is an Interschool tennis competition for primary students. Thank you to the Beverley Lawn Tennis Club for once again hosting the event. Great tennis and sportsmanship on display by all ~ well done!!



Farewell Mrs Vandenberg

This year, one of our amazing long serving Special Needs Education Assistants, Mrs Gay Vandenberg, has decided to retire from the Department of Education. Gay has always been a tireless, devoted and dedicated staff member and highly valued educator, who committed herself to working with all students to improve their progress and achievement in school at Beverley. Her involvement in all aspects of school life will be sorely missed. Thank You Gay, we wish you all the best.



Oval Reconstruction Update

The much needed reconstruction of our school oval is finally completed. We have a very excited PE teacher ready for lessons on the new oval!!! Stay tuned for the Term 2 opening.



P&C Uniform Shop

The P&C Uniform Shop have a selection of good quality second hand uniforms for sale. For the bargain price of a donation to the P&C. If you would like to find out sizes and what's available, please contact Kristy Parker. **TEXT ONLY: 0439 634 650**

School Development Day

Please be aware that there is a School Professional Development Day for Term 2, **Tuesday 26th April**, students to return to school on **Wednesday 27th April**.

Hot Cross Buns Reminder

Don't forget to get your orders in by **Friday 1st April**, for delivery on the 7th & 8th of April to help the Beverley District High School Kindy/Pre-Primary Committee fundraiser for resources.

FACTION SWIMMING CARNIVAL RESULTS 2022



BOYS CHAMPIONSHIP WINNER	GIRLS CHAMPIONSHIP WINNER
YEAR 3 CH: Alec RUNNER UP: N/A	YEAR 3 CH: Sienna RUNNER UP: Phoebe
YEAR 4 CH: Billy RUNNER UP: Hamish T	YEAR 4 CH: Amelia RUNNER UP: Pippa
YEAR 5 CH: RUNNER UP: Declan	YEAR 5 CH: Abigail RUNNER UP: Ruth
YEAR 6 CH: Burke RUNNER UP: Keenan	YEAR 6 CH: Takara RUNNER UP: Sydney
Yr 7/8 CH: Cody RUNNER UP: Kody	Yr 7/8 CH: Bethany RUNNER UP: Emily
Yr 9/10 CH: Blair RUNNER UP: Brodey	Yr 9/10 CH: Fillipa RUNNER UP: N/A

Primary Open Boys Freestyle	Primary Open Girls Freestyle
WINNER: Burke RUNNER UP: Keenan	WINNER: Takara RUNNER UP: Amelia

Secondary Open Boys Freestyle	Secondary Open Girls Freestyle
WINNER: Cody RUNNER UP: Kody	WINNER: Fillipa RUNNER UP: Bethany



OUTRIGHT FACTION RESULTS	
1 st	DALE – 450 Points
2 nd	FORREST - 246 Points
3 rd	EYRE - 240 Points

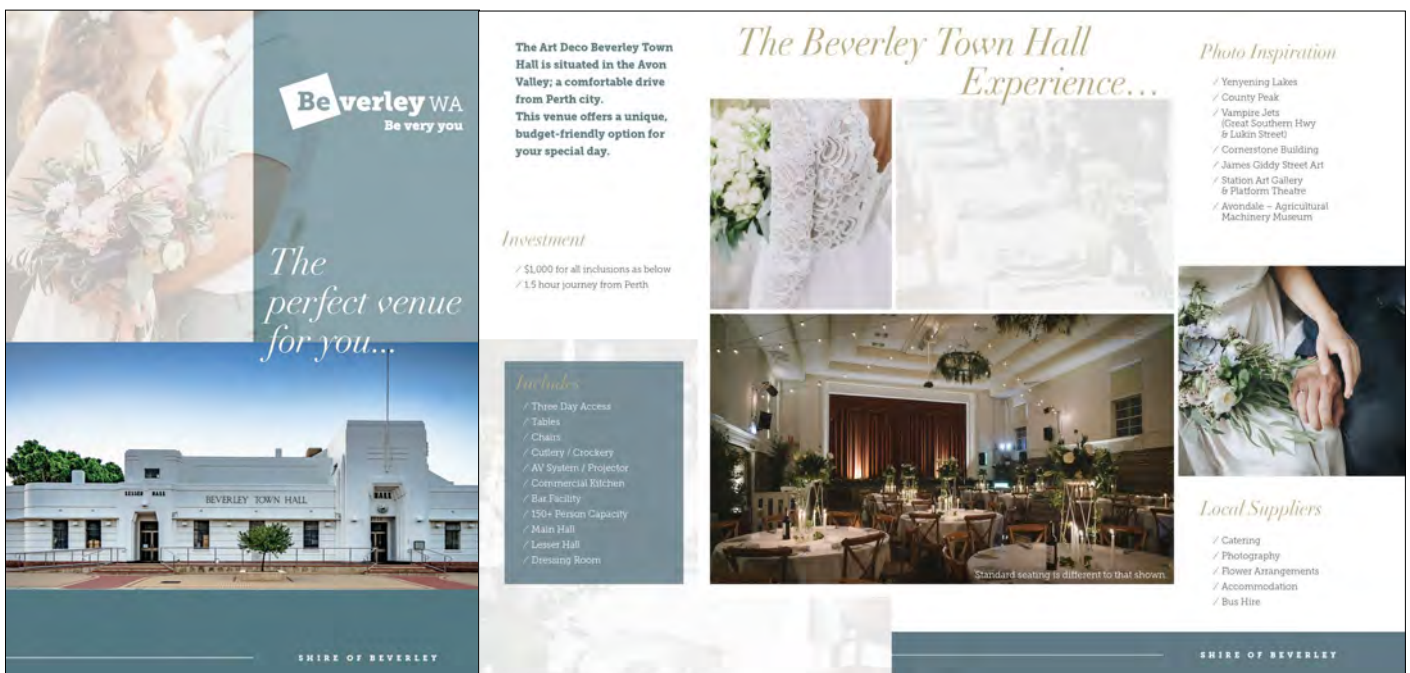
SAVE THE DATE

Spring Back to Beverley

24th & 25th
SEPTEMBER 2022

Celebrating 150th Anniversary of Beverley Road Board,
150th Anniversary of Dead Finish Museum &
other significant Shire of Beverley projects.

Be verley Western Australia
Be very you



Be verley WA
Be very you

The perfect venue for you...

The Art Deco Beverley Town Hall is situated in the Avon Valley; a comfortable drive from Perth city. This venue offers a unique, budget-friendly option for your special day.

Investment

- ✓ \$1,000 for all inclusions as below
- ✓ 1.5 hour journey from Perth

Includes

- ✓ Three Day Access
- ✓ Tables
- ✓ Chairs
- ✓ Cutlery / Crockery
- ✓ AV System / Projector
- ✓ Commercial Kitchen
- ✓ Bar Facility
- ✓ 150+ Person Capacity
- ✓ Main Hall
- ✓ Larder Hall
- ✓ Dressing Room

The Beverley Town Hall Experience...

Photo Inspiration

- ✓ Yenyening Lakes
- ✓ County Peak
- ✓ Vampire Jets (Great Southern Hwy & Lukin Street)
- ✓ Cornerstone Building
- ✓ James Giddy Street Art
- ✓ Station Art Gallery & Platform Theatre
- ✓ Avondale - Agricultural Machinery Museum

Local Suppliers

- ✓ Catering
- ✓ Photography
- ✓ Flower Arrangements
- ✓ Accommodation
- ✓ Bus Hire

SHIRE OF BEVERLEY



BEVERLEY HISTORICAL SOCIETY presents

A New Series Remarkable Women of Beverley

“The Energetic Proprietress” - Annie Gill 1882-1970

Annie Curtis was born about 1882 to William Curtis and Annie nee Barry of Mt Kokeby, Beverley. She was one of six children: three sons - John, Dave & William, and three daughters - Caroline, Elizabeth & Annie. John married Ellen, had 5 children but was killed in 1917 in France in WW1. His name is on the Menin Gate. Dave and William were twins, who later changed their name to Brereton. They farmed together at Mt Kokeby until William died in 1929. Dave married Emily Grover. He died in 1956. Caroline married J Smith of 'Forest Gate', Brookton and gave birth to Hubert Smith, later of 'Chocolate Hills'. Elizabeth, who was Annie's twin, married Walter Warren of Kulyaling. She died in 1947.

Annie married Samuel George Gill, farmer of 'Merridale', Beverley on 30th June 1903 at Mark's Anglican Church, Brookton with celebrant, Canon C. E. Groser. Her address on the register is given as Pingelly. Her occupation was given as domestic. She was 20, he was 30.

Samuel George Gill was elected to the Mourambine Road Board in 1903. In 1907 & 1908 he was actively involved with the Kulyaling Progress Association. In 1915 he unsuccessfully applied for a gallon license for premises at Kulyaling. By 1919 the Gills were living in Albany where S. G. Gill advertised a “Motor Car for Hire, Day or Night, Wet Weather or Fine.” In 1924 Mr. G. Gill of Albany took delivery of a new Nash Six, 7-seater.

Mr G. Gill was on hand to assist in 1925 when a young relative of the wife of Annie's nephew, Hubert Smith, had a riding accident near Avondale. George was one of a party of men caught in 1926 floods when returning to Beverley from a golf match in Pingelly. G. S. Gill was the defendant in a claim for damages arising from his role as a taxi driver in Albany in 1928. No evidence of negligence was found.

PUBLIC ANNOUNCEMENT

GREEN LIZZARD TEA ROOMS

MRS. G. S. GILL (late of Middleton Beach Tea Rooms) has pleasure in announcing that she has opened

Tea and Refreshment Rooms in Beverley

On the premises recently occupied by Mr. Skipworth (next Jewson's)

ICE CREAM COOL DRINKS SUPPERS a specialty

— Sip into the Green Lizard Tea Rooms and give the new firm a trial —

Mr & Mrs S.G. Gill moved backwards and forwards between Albany, Brookton (where her mother now lived) and Beverley for several years. At one time Mrs S. G. Gill took a job working at the Ocean Beach Tea Rooms at Middleton Beach, Albany.

Until, in April 1925, Mrs Gill herself opened the “Green Lizard Tea Rooms” in Central Buildings, Vincent St Beverley. Annie was 43 years old. This business was very successful, with Mrs Gill increasing her menu to include hot meals, and later opening up another room, advertising she was now able to

cater for parties. In this business and others to follow she was often contracted to provide suppers and refreshments for public events. The Green Lizard Tea Rooms was taken over by Mrs Chris Carroll in 1927.

Mrs Gill increased her business commitments with a far larger enterprise, going into partnership with Mrs Bevan. They made an agreement with Edward Powell to lease the White Hart building, reopening it in 1927 under the name “Beverley Hostel” offering room and board as well as a public dining room. This was short-lived, with the partnership being dissolved in 1928, though Annie carried on by herself for several months.

Annie Gill then took on various other small businesses in Beverley: Mrs Gill's Hairdressing Salon & variety store in Vincent St, 1929; Mrs Gill's Private Boarding House in Railway Terrace, 1930; Cabin Tea & Dining Rooms, with board & residence available, opposite Gillespie's, 1931.

Beverley Hostel



Late WHITE HART) Mrs. GILL — Proprietress

Dining Room Now Open to the Public
The Best of Meals at a Moderate Price

PHONE 103.

BEDROOM ACCOMMODATION. Special rates to permanent Boarders

She had a small white Maltese Poodle that answered to the name "Sammy". Running catering and boarding establishments left little time for civic affairs, nevertheless Annie was a keen supporter of the RSL Women's Auxiliary (her brother died in WW1) and was elected Vice President in 1935. Meetings were held in her tea rooms.

In April 1934, it was reported that Mrs Gill was moving to Kalgoorlie "where she intends to go into business". A valedictory evening was held in the Masonic Hall. But in August of the same year, she announced new "Tea & Luncheon Rooms" opening in Mr Powell's Buildings opposite the Fire Station. This was in conjunction with a new venture, a Handy Food Shop with "Home Cooking of Every Description".



The following appeared in the Beverley Times on Friday 4 January 1935:

"Boarding House Robbery. —Mrs. Gill, who recently opened a boarding house in Beverley, was the victim of a robbery perpetrated at her establishment on Sunday last. She had placed a bag containing between £6 and £7 in an apparently safe place in one of the rooms during the afternoon, but on returning to where she had placed it some time later was chagrined to discover that it had been removed during her absence. P.c. Rea is making inquiries into the matter, but to date there have been no developments."

The reception for the wedding of Mollie Ryan & Ernie Sims was held at Mrs Gill's Dining Room in 1936, but by 1937 her role as a businesswoman was over. In December 1937, hairdresser, Joyce Davey, removed her place of business to Mrs Gill's shop in Powell's Buildings and in December 1938 a Warrant of Execution was issued by the local court on behalf of Mr E. Powell with an auctioneer, under instructions from the bailiff, to sell off a quantity of furniture and effects including an Icy Ball Refrigerator, chairs, tables, crockery, glassware, beds & bedding. Annie Gill was 56 by then and had been in business in Beverley for more than twelve years.

Finally on Friday 8 May 1970 the Beverley Times reported:

"The funeral was held at the Anglican cemetery at Brookton on Wednesday of Mrs A. Gill who at one time was in business in Beverley - conducting the "Green Lizard" tearooms and later a boarding house. She was related to Dave and Bill Brereton (formerly Curtis) of Kokeby and had other relatives here. For years past she has been an inmate of the Brookton Hospital where her demise occurred. The Rev Tassell officiated for the last rites."

Annie Gill died at the age of 88 and is buried in Brookton Cemetery, where her mother and twin sister are also buried.

Samuel George Gill was cremated at Karrakatta and is interred in the Crematorium Rose Garden. He died aged 78 in December 1950 at Leederville.

Comment:

Annie's marriage to Samuel George Gill seems to have lasted for just over 20 years. There is no mention of children and George seemed to be the type who started projects but then lost enthusiasm. His spasmodic attendance at local civic groups is an example of this. He did seem to make a success of his hire car/taxi business in Albany but perhaps Annie wanted to live closer to her family (her mother had been ill early in 1924) and made the decision to move to Beverley in 1925 and make her own living. [Was it just coincidence that her small dog was called Sammy?]

Like most women of her generation, she was not formally trained in a career. However, for over 12 years she opened and closed a variety of small businesses in Beverley, using the domestic skills at which she was proficient. The Beverley Times once referred to her as "*the energetic proprietress*". The idea behind the Handy Food Shop was very entrepreneurial. To be able to buy "*home cooking of every description*", presumably to take away home, was something new at that time.

She couldn't pay her debts at the end and maybe this was due to ill-health. She had previously thanked doctors & nurses at Beverley Hospital for their care and attention. According to the funeral report she had been in Brookton Hospital for years.

Can you help? Do you have a photo of Annie Gill? Please contact bhsdeadfinish@gmail.com

CWA York & Lions Skin Cancer Screening

CWA York and the Lions Cancer Institute (WA) joined forces to deliver a free skin cancer screening clinic in York on Sunday, 6 March 2022. Lions have been providing this service in Western Australia since 1990. A total of 69 people attended on the day. Of those, 18 people (26 per cent) were referred to a health practitioner for further investigation. Six life-threatening lesions were discovered, and in all 34 lesions were found. Perhaps the most telling statistic is that of the people who attended the clinic, 14 had never previously been screened. These figures show an increased awareness amongst the community of the importance of having regular checks. And it was yet another example of what can be achieved in terms of effective service delivery when two organisations unite.

Our grateful thanks go to Dr. Alan Wright and Di Wright (pictured top right) for conducting the screening. Also shown below are some of our members enjoying lunch with volunteers from Lions. Thank you to all the CWA ladies who helped out – Jean Wykes, Helen Grainger, Annie Birch, Dawn Ainsworth, Margie Barrett-Lennard, Louise Copley, Sue Holmes, Lorraine Stone, and Grace Della-Bosca. But the biggest round of applause goes to Karen Newman (pictured middle right), another of our members, who scrupulously cleaned and sanitised throughout the day, protecting us all from COVID-19. Karen, you are a marvell!

Marion Bateman
CWA York Member & Media Reporter
21 March 2022





Term 1 Calendar of Events

Every Thursday
9:30am to
11:30am



FEBRUARY

17th: Playgroup
@ Moort Wabiny Park

24th: Playgroup
@ Amenities Building Playground

MARCH

3rd: Playgroup
@ Moort Wabiny Park

10th: Storytime & Toy Library
@ Town Library

17th: Playgroup
@ Amenities Building
Playground

24th: Playgroup
@ Moort Wabiny Park

31st: Playgroup
@ Amenities Building
Playground

APRIL

7th: Storytime & Toy Library
@ Town Library

Storytime

END OF TERM 1

Playgroup Returns for Term 2
on Thursday 28th April

Beverley
Toy Library

Any Enquiries to:
Kelly Aaron (Playgroup President) 0400 772 081
Melissa Blechynden (Playgroup Secretary) 0429 504 963
Kelly Mann (Storytime & Toy Library) 0428 779 234

Thank you to The Shire of Beverley
We are fortunate to have so many excellent facilities in our town that
we can use as alternative venue options



Beverley Early Years Group
Beverley Playgroup WA



Register Now!

JUNIOR FOOTY IS BACK IN TERM 2, 2022!

**AUSKICK: PP - YR 2- SATURDAY MORNINGS AT 9AM
CONTACT CHARLIE HORROCKS- 0429203582**

**JUNIOR FOOTBALL: YR 3 UPWARDS
TRAINING WEDNESDAY AFTERNOON
GAMES ON THE WEEKEND
CONTACT BRETT SHAW- 0427481028**

**REGISTRATION LINKS AVAILABLE ON
BEVERLEY JUNIOR SPORT FACEBOOK PAGE**



Net Set Go & Junior Netball

2022 Season Registration day Wednesday 30th

March from 4pm



Players in Year 3 & 4 (based on skill and availability) as well as anyone ages 10 –13 will form the Junior Reddies Netball Team and follow the East Avon Football/Netball game fixtures. Training will commence Wednesday 30th March at 4pm (the first scratch match is to be held in Quairading on Saturday 2nd of April)

**Net & Set will start in Term 2 on Wednesday 27th April
at 4pm**

For any other information please contact

Sharlee Higgins, 0426811080

Junior Netball Coordinator

Day	Date	Event	Auskick	Net Set Go PP-Yr3	Junior Footy	Junior Netball	Venue
Wed	30th Mar	Training			4:00pm	4:00 PM	Beverley
Sat	2nd April	Quairading V Beverley			10am	10am	Quairading
Wed	6th April	Training			4:00pm	4:00 PM	Beverley
Sat 9th April Sat 9th April to Wed 20th April—SCHOOL HOLIDAYS (BYE)							
Sat	23rd April	Keller/Tammin v Beverley			10am		Tammin
Wed	27th April	Training		4:00 PM	4:00pm	4:00 PM	Beverley
Sat	30th April	Training	9:00 AM				Beverley
Sat	30th April	Beverley v Quairading			10am	10am	Beverley
Wed	4th May	Training		4:00 PM	4:00pm	4:00 PM	Beverley
Fri	6th May	Training/Scratch Matches			5:30pm	5:30pm	Beverley
Sat	7th May	Training	9:00 AM				Beverley
Wed	11th May	Training		4:00 PM	4:00pm	4:00 PM	Beverley
Sat	14th May	Beverley V Cunderdin			10am	10am	Beverley
Wed	18th May	Training		4:00 PM	4:00pm	4:00 PM	Beverley
Fri	20th May	Training/Scratch Matches			5:30pm	5:30pm	Beverley
Sat	21st May	Training	9:00 AM				Beverley
Wed	25th May	Training		4:00 PM	4:00pm	4:00 PM	Beverley
Fri	27th May	Training/Scratch Matches			5:30pm	5:30pm	Beverley
Sat	28th May	Training	9:00 AM				Beverley
Wed	1st June	Training		4:00 PM	4:00pm	4:00 PM	Beverley
Fri	3rd June	Training/Scratch Matches			5:30pm	5:30pm	Beverley
Sat	4th June	Training	9:00 AM				Beverley
Wed	8th June	Training		4:00 PM	4:00pm	4:00 PM	Beverley
Fri	10th June	Training/Scratch Matches			5:30pm	5:30pm	Beverley
Sat	11th June	Training	9:00 AM				Beverley
Sat	11th June	Watheroo Cup Yr7's					Watheroo
Wed	15th June	Training		4:00 PM	4:00pm	4:00 PM	Beverley
Sat	18th June	Training	9:00 AM				Beverley
Sun	19th June	Ferguson Shield (Up to yr5 by selection)			Time T.B.C	Time T.B.C	Quairading
Wed	22nd June	Training		4:00 PM	4:00pm	4:00 PM	Beverley
Sat	25th June	Cunderdin v Beverley	9:00 AM		10am	10am	Cunderdin
Sun	26th June	Beverley Shield (Up to yr7)			Time T.B.C	Time T.B.C	Cunderdin
Wed	29th June	Training		4:00 PM	4:00pm	4:00 PM	Beverley
Sat	2nd July	Beverley V Keller/Tammin	9:00 AM		10am		Beverley
Wed 6th July to Sat 16th July SCHOOL HOLIDAYS (BYE)							
Wed	20th July	Training			4:00pm	4:00 PM	Beverley
Fri	22nd July	Training/Scratch Matches			5:30pm	5:30pm	Beverley
Wed	27th July	Training			4:00pm	4:00 PM	Beverley
Fri	29th July	Training/Scratch Matches			5:30pm	5:30pm	Beverley
Wed	3rd Aug	Training			4:00pm	4:00 PM	Beverley
Sat	6th August	Beverley v Quairading			10am	10am	Beverley
Sat	13th Aug	Windup	9:00 AM	9:00 AM	9:00 AM	9:00 AM	Beverley
		Cup/Shield/Carnival					
		Playing a Team			Please arrive 30min before your game (10:00am for a 10:30am start)		
			Corrigin Neutec Cup for Auskick to be confirmed at a later date				

Please Note: Saturday mornings are generally in club scratch matches for Junior Netball & Junior Football (not Auskick/Netsetgo)



Valenti Lawyers Are Now In Northam

valentilawyers.com.au



Valenti Lawyers is a boutique law firm which prides itself on providing a personalised quality legal service. We specialise in eight core services for leading businesses and individuals, each led by one of our experienced senior lawyers; Business Growth & Protection, Dispute Resolution & Commercial Litigation, Finance & Security Services, Insolvency, Land Reservation, Resumption & Compensation, Property & Town Planning, Rural Assets & Succession Planning, and Wills, Probate & Inheritance. You can now find us at the below address in Northam every fortnight!

Open fortnightly from the 12th February 2021.

Please head to valentilawyers.com.au to view our Northam office dates, and to book an appointment with one of our staff.

**RSM
210a Fitzgerald St East.
Northam WA 6401**

Beverley Clay Target Club

Rifle club Nicholas St, Beverley

2022 Dates

- 9 Jan - 50DB**
- 6 Feb - 25SB-25PTS**
- 6 Mar - 60MXD**
- 3 Apr - 50DB**
- 1 May - SHOOTERS CHOICE**
- 12 Jun - 25DB-25SB**
- 10 July - 50DB PTS**
- 7 Aug - 60MXD**
- 4 Sept - SHOOTERS CHOICE**
- 2 Oct - 25 SB PTS**
- 13 Nov - 50 CONT**
- 11 Dec - CAPTAINS CHOICE**



COUNTRY LINE DANCING

Thursday mornings at the
Town Hall

Enquiries to
Jan 0429 952 177

Practice Starts @ 9:00 am

Shoot Starts @ 10:30 am Sharp

**New members are more than welcome to
come and try, shotgun and ammo can be
provided for people without a licence or gun.**

EMS

Evert's Mechanical Services

For Affordable, Friendly, Honest Service

We Come to you, Mobile Mechanic

- ✓ **We are your local Mechanic, in Beverley.**
- ✓ **Fully trained and Qualified to service your car**
- ✓ **Service your Brakes/Change Brake fluid**
- ✓ **Oil and Filter Change**
- ✓ **General Safety Check**
- ✓ **Car, 4WD, SUV's Old and New**
- ✓ **Change Engine Coolant**
- ✓ **Tune ups**
- ✓ **Battery Replacement**
- ✓ **Other Repairs/Engine/Dash Lights Diagnosed**

Please Phone us on: 0404-153-264

Email: EvertsMechanical@protonmail.com



BEVERLEY MENS SHED

Open every Tuesday morning 8.30am to 11.30am at the old Fire Station. Call in for a coffee, meet the members and see the great equipment for members to use. New members are always welcome. Contact Harvey Morrell for more information on 0427 235 681 or email president@beverleymenshed.com

Beverley Bowling and Croquet Club A G M

Please be advised that the Beverley Bowling and Croquet Club's AGM will be held on WEDNESDAY 13TH APRIL 2022 7:00PM at the Club Rooms, Forrest Street. All members are invited to attend.

Beverley District High School P & C Meeting

The next P&C meeting is on JUNE 15th at 7pm at the Freemasons Tavern

GARAGE SALE

Saturday 9 April
8:30 am to 3:00 pm
Furniture, kitchenware, books, knick-knacks
33 Dawson Street, Beverley
0413 897 172

Kevin Priest

Janine, Paul, Ann, Gregory, John and families would like to sincerely thank all those who attended the funeral of our beloved Husband, Father and Grandfather, Kevin. To those who made phone calls, sent cards and flowers, thank you. To the Beverley Hospital Staff and St John Volunteers, your care of Kevin was greatly appreciated. The family and friends who came to the Amenities building thank you, we appreciate your support.



The Good Life Store in York has now launched a website to make shopping easier for locals.

Our website is designed for locals to shop on line and pick up orders from the store, 109 Avon Terrace York, (next door to pharmacy).

Check out our range of products.

<http://thegoodlifestoreyork.com>

FOR SALE

2 Wall-Split Air Conditioners

Disconnected, with wall section already taken down & outdoor unit(s) ready to remove from local community group premises.
\$400 each ono. For more info call 0427 416 047

FOR SALE

Shoprider Gopher 889XLSBB

Very Good Condition

\$1,299

No Longer Required



Call 0419 949 769





www.vinesmedicalpractice.com
(08) 96461125

Have your **HEART** checked!



Heart disease is the broad term for conditions that affect the structure and function of the heart muscle.

Who are the people at risk?

- Hypertensive patients (high blood pressure)
- Smokers
- Diabetics (high blood sugar)
- Alcoholic beverage drinkers
- Overweight patients

Heart disease can have many causes. It occurs earlier and more frequently in men than women, and within certain ethnic groups. You may be born with heart disease or have an increased risk of developing it due to your genetics.

Many incidents of heart diseases are preventable and treatable. Early diagnosis is key!

Have your heart checked with us today!



**Old charm country pub
Accommodation and free
camping
Air con and character din-
ing rooms
VISIT FOR THE EXPERI-
ENCE
OPENING TIMES:
Everyday Dinner from**

PH: 9641 4095

444 GREENHILLS

BailiwickLegal.

BEVERLEY LEGAL HOT DESK

Beverley Community Resource Centre
141 Vincent St

DANIELLE EDWARDS



The team at Bailiwick Legal is excited to launch its new initiative
Regional Legal Hot-Desk.

Bailiwick Legal practices in the areas of commercial, agribusiness, litigation, dispute resolution, wills & estates, employment & workplace, property, mining & access, and tourism law.

Danielle Edwards grew up in the country and is an Associate at Bailiwick Legal.

Danielle will be in Beverley on the following dates between 9.30am - 3.30pm;

**March 15
May 10
July 19**

To book a free 20-minute consultation please email danielle@bailiwicklegal.com.au or call 0488 727 886

Beverley Ladies Golf Club

Welcome to 2022 season.

Captain: Jane Murray
V/captain: Valda Morton

Coaching Clinic with Rob Farley
Friday. May 6th
Friday. May 20th
Friday. June 3rd
Friday. June 17th.

The clinics will be for beginners to experienced players for men and ladies.

9am Ladies ;10.30am Men

\$10 per session

Golf sticks are provided. Looking forward to lots coming and learn this great game. Please contact Jane Murray for numbers. 0458460037

Starting time this year.

WEDNESDAY. 18 holes

Names. 10am

Draw. 10.20

Hit off. 10.30

If you wish to play 9 holes, please contact Jane or Valda.

Our season starts on Wednesday 27th April with the Anne Szczecinski trophy in a Stroke game format.

1st international bowl

1st silver spoon

1st putting comp

Eclectics commence

May 4th. Delys Kilpatrick trophy
Stableford

Monthly medal

Long drive commences

Wed. May 11th. Minchin and Hobbs trophy
Travel tree comp. 4bbb Stableford.

Wed May 18th. Ali Lewis trophy
Par

Wed May 25th Maxine Watts trophy Stroke
2nd silver spoon
2 nd I/ bowl
2 nd putting comp

Good golfing girls for this year and let's have a
happy , joyous season.
Jane and Valda.



OBSERVING HOLY WEEK AND CELEBRATING EASTER DAY

While the Avon Valley, and Beverley Shire in particular, is alive with sporting and cultural activities over what is today called "The Easter Weekend" many in the Shire will have the opportunity for the first time in many years to fully commemorate and celebrate what is the most important week in the Christian Calendar – Holy Week leading into Easter Day. There will be services on Palm Sunday, Maundy Thursday, Good Friday, and Easter Day at each of the Anglican Churches at Beverley, Brookton, Quairading and York during that week; services for Beverley are below.



The Descent from the Cross (La descent de croix), James Tissot (French, 1836-1902). 1886-1894, Brooklyn Museum.

Through participation in the whole sequence of services, a person shares in Christ's own journey from the triumphal entry into Jerusalem on Palm Sunday to the empty tomb on Easter morning. The procession with palms on Palm Sunday is accompanied by the reading of the Passion Narrative, in which the whole story of the week is anticipated. Maundy Thursday (from *mandatum*, 'commandment') contains a rich complex of themes: humble Christian service expressed through Christ's washing of his disciples' feet, the institution of the Eucharist, the perfection of Christ's loving obedience through the agony of Gethsemane. After keeping vigil ('Could you not watch with me one hour?') Thursday passes into Good Friday with its two characteristic episodes, the Veneration of the Cross and the sequence of meditations and music known as the Three Hours' Devotion. The church remains stripped of all decoration until the rising excitement of Easter draws near. In this set of services are preserved some of the oldest texts still in current liturgical use, rehearsing the deepest and most fundamental Christian memories.

All are welcome to come and take their part at St Mary's Church, Beverley.

Sunday, 10 th April	10.30 a.m.	Palm Sunday - Eucharist
Thursday, 14 th April	6.30 p.m.	Maundy Thursday - Eucharist
Friday, 15 th April	10.30 a.m.	Good Friday
Saturday, 16 th April	6.30 p.m.	Easter Eve Barbecue and Grill
	8.00 p.m.	Easter Day Service - Eucharist



Beverley Historical Society Dead Finish Museum

bhsdeadfinish@gmail.com

Due to unforeseen circumstances the Historical Society had decided to not open the Museum during March, sorry for any inconvenience.

We will be reopening on Sunday 3rd April 11am - 3pm.

We will also be open on Easter Sunday 11am - 3pm

As per usual there is lots of research going on behind the scenes and for this, we thank our volunteers.

As this year is the 150th year of the Dead Finish Building we are compiling a list of owners over the years but would be very interested to hear from anyone that lived there, with a little snippet of information regarding the year, size of family, what rooms were used etc. Please contact us bhsdeadfinish@gmail.com

Next meeting will be held Monday 11th April 2022 at 1.30p.m. followed by a cuppa, feel free to join us , new members are welcome.

Mia DAVIES MLA

Leader of The Nationals WA

CENTRAL WHEATBELT



Northam Office
171 Fitzgerald Street
(PO Box 92)
Northam WA 6401
Ph 08 9622 2871
Fax 08 9622 1668

Merredin Office
The Old Town Hall, Mitchell St
Merredin WA 6415
Ph 08 9041 1702
Fax 08 9041 2554
Freecall 1800 673 914

mia.davies@mp.wa.gov.au
www.miadavies.com.au
MiaDaviesMLA
facebook.com/MiaDaviesMLA

THE NATIONALS for Regional WA

Authorised by M.Davies, Northam Boulevard Shopping Centre, Fitzgerald Street, Northam.



No excuses
See your doctor if you notice anything different with your body.



For more information visit www.findcancerearly.com.au



Beverley Badminton

Every Wednesday Morning at 9am
at Beverley Shire Hall

We hope to see you all there, new members very
welcome, come and have a go!

COVID Restrictions are to be adhered to, players will
need to provide proof of double vaccination and need
to wear masks when NOT playing, thanks.

Social and Competition Games Only

Please wear closed in shoes. Rackets are provided

NEW MEMBERS WELCOME

For More Information or Enquiries
Find us on Facebook
or email beverleybaddy@outlook.com
or contact Elaine on 0408 903 478

Yarns & Yarns

EVERYONE IS WELCOME FOR A FUN MORNING
OF CRAFTING - EVERYTHING FROM
CROCHETING, KNITTING, SCRAPBOOKING TO
SEWING. JUST BRING YOUR BYO CRAFT
PROJECT AND JOIN US FOR LAUGH AND
MORNING TEA.



Mondays at 10.30am
CRC Cornerstone
Morning tea available \$3

Are you interested in the future planning
of Health Services in Beverley?

DOES YOUR HEALTH MATTER?



Call Local Health Advisory Group
Chairman - Keith Murray
M: 0458 460 737
E: jundy52@icloud.com

Local Health Advisory Group

Be heard

Advocate for health
services issues
important to you

Be involved

Collaborate with local
health services to
bring about positive
change, improving the
health and wellbeing
of our community

For more information

Contact Keith Murray

0458 460 737 jundy52@icloud.com



Take the opportunity to join in gentle activity aimed at general fitness and falls prevention.

Stay Active

with the
Beverley Everlastings

Stay Active is a weekly one-hour keep fit session for those who find gentle aerobic, strength, balance and stretching exercise beneficial to their health.

The exercises are designed for over 50s, but younger participants are welcome. Those less mobile or those recovering from accident and illness also find the exercises useful.

Chair exercises are available and participants can opt to do all or some of these.

Stay Active

Date: Tuesday's

Time: 9:00am

Place: Beverley Recreation Centre

Cost: \$1

Come along for social-distancing fun activity. Stay Active is a volunteer community health program



Government of Western Australia
Department of Health

Who let the cows out?



BEVERLEY QUILTING GROUP

We meet on Tuesday's at the Masonic Lodge in the back room. We start at 9.30am and finish at 2.00pm

\$2 donation per session and BYO lunch.

For further information contact Jan Sherwood on
0438 019 510

Card Games at CWA

BRIDGE

WHEN: Monday's

WHERE: CWA Hall

SAMBA

WHEN: Saturdays

TIME: 1.00pm

WHERE: CWA Hall

Afternoon Tea provided -

Phone 9646 1271



BEVERLEY LIBRARY

Open Monday
to Friday
9.00am to 4.30pm



LOCAL BUSINESSES



ANIMAL HEALTH, CHEMICALS, FENCING, FERTILISER, PET FOOD, SEED, STOCK FEED, WATER EQUIPMENT



LOT 502 DE LISLE STREET, BEVERLEY

TRADING HOURS MON-FRI 8AM-5PM

BARRY FRASER 0427 940 827



Locals Supporting Locals



E Squire Contracting Services

Water Supply
Windmills & Accessories
Solar Pumps:
Sales, Service, Installation
Fencing & Yards
Trenching & Poly Pipe Laying

E Squire Contracting Services
Beverley and surrounding districts

Phone: 9646 0800

Errol Squire 0438 682 687

Painter Decorators

All repairs & painting

Lyndon & Cameron Grover

0427 661 302

lyndongrover@bigpond.com

Reg: 3941



- Plastering
- Pressure Cleaning Roof
- Gyprock
- Spray Painting
- Repairs
- Gutter Replacing



C & B TRANSPORT

DELIVERING GENERAL FREIGHT AND
CHILLER GOODS

3 DAYS PER WEEK OR AS REQUIRED

TO

**BEVERLEY, BROOKTON,
PINGELLY**

FROM

**PERTH DEPOT CANNINGVALE
MARKETS**

PLEASE CONTACT PAUL BALDWIN

ON

0417 953 968 or 08 9646 0461

BIG ENOUGH TO DO THE JOB SMALL ENOUGH TO
CARE

WOOL BUYER / BROKER

Broking Clips

Buyer of oddments

Pick up and same
day payment

MIKE FAIRCLOUGH

0429 635 999

Established in 1997, proudly servicing Beverley and surrounding areas



**BEVERLEY GAS + PLUMBING
SERVICES**

PL 9723
GF 017690
BFL 3108

**Beverley Gas and Plumbing is your local plumber
for all your plumbing and gas needs.**

- Renovations
- Septic and leach drains
- Gas installs and maintenance
- Hot Water
- Blocked drains
- Dripping taps
- Backflow prevention
- Sewerage conversion

Kodie Fleay
Phone 0418 929 141
Email beverleygandp@gmail.com

Get the most out of your fertilizer investment

At Summit, we're here to help you achieve the most profitable yield no matter what the season brings.

- Cropping fertilizers
- Pasture fertilizers
- Area Manager support
- Field research trials
- inSITE soil and plant analysis
- Nutrient fuel gauges
- Flexible payment & credit options

Speak with David Hull,
your new local Area Manager



Mobile: 0477 923 684 Email: dhull@summitfertz.com.au

RA-AN ENTERPRISES

EARTHMOVING CONTRACTOR

- Dam sinking
- Dam cleaning & enlargements
- Fence Lines
- Shed sites etc.



Dozer & Excavator Hire
Dozer with Rake

Can provide Bobcat - Backhoe - Grader -
Side Tipper

For larger jobs 54 tonne Dozer

Contact: Ray 0428 936 621

History

Vincent Street



As part of the Heritage Trail component of the Vincent Street Streetscape Project, The Shire of Beverley is seeking photos or video footage of **Vincent Street** (from Hunt Road to the Bridge) from **ANY ERA!**



If you would like to share a photo and are happy to sign a general release form for us to use a copy of your photo or video then please contact Stefan 9646 1200 or email planner@beverley.wa.gov.au

Thank you to those who have already contributed!



SPECIALISING IN
AGRICULTURAL & HAULAGE TYRES,
AG & OTR HOT VULCANISING REPAIRS
& BATTERIES

NOW HOT VULCANISING

24/7 **0407 457 421** **48 DAWSON ST, BEVERLEY**

NOT JUST A 'TYRE' SHOP, LIKE US ON FACEBOOK FOR UPDATES!



BEVERLEY
 PHYSIOTHERAPY

Kahlia Ferguson
Physiotherapist

Located in the Cornerstone Building. Appointments available Monday and Tuesday

Sports injuries, osteoarthritis, muscle strains, neck pain, back pain, headaches, post-op management

Women's and Pelvic Health reviews available with Physiotherapist **Janine Murray** monthly

Enquiries and Bookings:

Phone 0437 709 577

Email: admin@beverleyphysio.com.au

Online Bookings: www.beverleyphysio.com.au

S#!T SUCKERS



**SHEARING SHED
 CLEANOUT**

LANDPOINT HOLDINGS 9398 4666

**Call Jack on
 0427 801 219**



BluejayAg

Lorretta Adams

AG SOLUTIONS

Heavy Vehicle Accreditation Auditing

WA Certified Auditor #208982

Authorised to Conduct **Main Roads WA**

Heavy Vehicle Accreditation Auditing

(Fatigue & Maintenance, Dimension/Loading & Mass Management Modules)

Book Online

www.bluejayag.com.au

Flexible service, able to meet at a mutually convenient location

hello@bluejayagsolutions.com.au 0437 282 797

AVON GLAZING

Everything Glass...

Windows Splash Backs
Mirrors & More

Ron Robinson
0427 185 291



WESTDALE TIMBER

T/A R. L. & T. L. TAMBLYN ABN. 106 854 06

**TREE TRUNKS REMOVED
TIMBER SLAB SALES**

PLEASE DON'T BURN UP GOOD USEABLE TREE TRUNKS

SAVE THEM FROM THE CROPPING CLEAN UP FIRE

DON'T LET THEM ROT AWAY TO WASTE

I WILL CHAINSAW THE TRUNK OUT OF THE TREES

LEAVING THE BRANCHES FOR YOU TO PUSH ONTO STUMPS
TO EASILY BURN UP

300MM AND LARGER TREE TRUNKS

WANTED DEAD OR ALIVE BY THE TRUCKLOADS

STANDING DEAD OR STORM WINDFALL TREES REMOVED

MARRI/RED GUMS, JARRAH, WANDOO/WHITE GUMS,
SHEOAK, TUART, BLACK BUTT AND PINES

Save yourself time and effort.

PLEASE CALL RICKY 0419 903 829

BROOKTON PLUMBING

ABN: 37 675 595 336

**FOR ALL YOUR
PLUMBING MAINTENANCE
AND GAS FITTING NEEDS**

***PLUS SEPTIC WASTE
REMOVAL**

PHONE:

**SEAN 0413 480 543 or
NATASHA 0422 013 889**

PL: 7130 GF: 006947 SWR: T235

BEVERLEY CHIROPRACTIC CENTRE

Dr Liam Welfar

CORNERSTONE BUILDING

141 Vincent St, Beverley

(Entrance off Dawson St)

08 9646 0523

Back Pain? Neck Pain? Headaches?
Sporting Injuries? Postural Problems?
Call us today to find out how I can help.

Hicaps facility available onsite

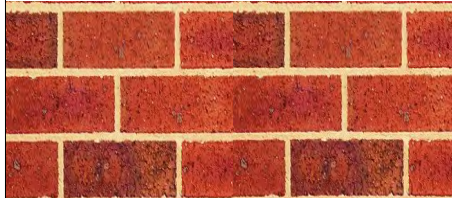
DJ YATES

Authentic Heritage Restoration

BRICK AND STONEMWORK
RESTORATION
AUTHENTIC REPOINTING OF
MORTAR, RISING
DAMP RECTIFIED
PROPERTY
MAINTENANCE



**PHONE DAVE
0419 041 542**



Unique Strokes W.A. Painting & Decorating

Reg. No. 4236

ROB BAIN

QUALIFIED LOCAL TRADESMEN

For Guaranteed Traditional
Workmanship & Prompt Free Quotes
**Phone: 08 9647 2102
Mobile: 0418 904 013**



Beverley
MASSAGE THERAPY

Monday 9.30 - 6.30pm

Friday 9.30am - 2.30pm

by appointment

Weekend appointments also available at
certain times. Call or message Christine on
0408 369 998 or visit
www.facebook.com/vitaminAskincare

In Beverley Chiropractor Centre in the Cornerstone
Building (Entrance off Dawson Street)

York Chiropractic

MacLachlan Centre - 4 Trews Road



Clinic available every week

9641 1500

Dr Alexandra (Sacha) Browne

B.Sc (Chiropractic) B.Chiropractic



Also available in Cunderdin and Merredin

ChemDry®

Drier. Cleaner. Healthier.™
Betta Finish



Superior carpet
& upholstery
cleaning

Freecall 1800 017087

bettafinish@wn.com.au

Fax 08 96225473

Countryside Memorials



Cast Stone

Granite

Marble

Plaques

Added Inscriptions

All Repairs and Restorations

25 YEARS PROFESSIONAL EXPERIENCE

FREE DESIGN AND QUOTE

Servicing All W.A. Country Areas

9696 0466

OXTER SERVICES

www.oxter.com.au

oxter@westnet.com.au

NEED PRACTICAL TRADE ASSISTANCE?

D & M Services

(Design and Manufacturing Services)

Solving a range of practical needs and problems..

Specialising in:

- ✓ Kitchen renovations
- ✓ Shop fitting and modifications
- ✓ Furniture restoration
- ✓ General carpentry
- ✓ Alterations & installations
- ✓ Metal based fabrication
- ✓ Motorhome and Caravan fitouts
- ✓ Pergolas, Decks & Gazebos
- ✓ Designing and planning

Guy Slingerland

0403602335



northam optical



- Bulk billing to Medicare
- HBF & DVA Provider
- Competitive prices
- Great range of frames & sunglasses
- Locally owned and operated

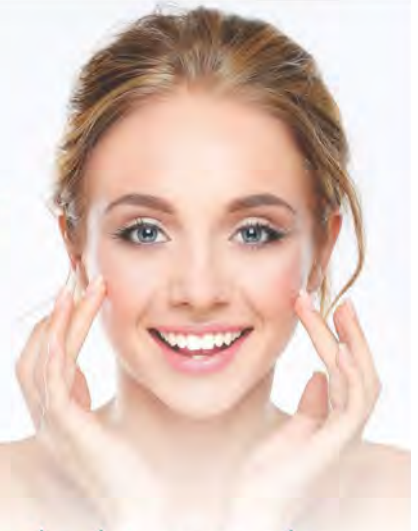
www.northamoptical.com.au

138 Fitzgerald St Northam WA P 9621 1131

E northam.optical@yahoo.com.au

Vines Aesthetic Clinic

Rejuvenating and
Invigorating



Put the glow back in your skin
juvenating and invigorating

- ✓ Dermabrasion Therapy
- ✓ Led Therapy
- ✓ Injectables
- ✓ Derma Pen
- ✓ PRP



VinesAestheticClinic

Dawson's Concrete & Reinforcing

“Your Local Beverley Concreter”

- Concrete Formwork & Steel Fixing
- Driveways, Shed floors, Maintenance pits, Silo pads, Super sheds, House pads
- Fully mobile service
- Over 30 Years Experience
- 7 Days A Week
- Professional, Reliable Service

Phone for a Free Quote

SANDY DAWSON

Mobile: 0417 375 221

Email: pameladawson@bigpond.com

FB: www.facebook.com/dawsonconcrete

SHAZMAC PLUMBING

PROUD TO BE YOUR LOCAL PLUMBER

Plumbing Licence: PL 5829 Gas Fitter Licence: GF 7422 RHL: L100443
ABN: 18 531 685 326

For all your plumbing & gas fitting needs

Phone 0408 189 987

PO BOX 116

BEVERLEY WA 6304

shazmac1@westnet.com.au

NO job is too big or too small.



DRUG & ALCOHOL COUNSELLING

The Wheatbelt Community Drug Service Team will be visiting Beverley Hospital fortnightly.

Appointments phone Jackie Darby 96211 055.

Mulesing Contractor



For all your Mulesing Requirements Beverley, York and surrounding areas

Contact Terry Slade

0427 635 065

KARRADALE LIVESTOCK TRANSPORT
YORK LIVESTOCK TRANSPORT
ABN 64 054 007 721

We service Beverley, Brookton, York
& surrounding districts

Available to transport Sheep & Cattle

No job too big or small

Support the local communities

Member of ALRTA

If you need stock moved, Peter would love to
hear from you - 0428 481 281



BEVERLEY
Transport

Your local carrier for over 30 years.

**GRAIN, FERTILISER, LIME, HAY,
WOOL AND SIDE TIPPERS
AVAILABLE**

Garry & Sarah Miller

0428 464 066

admin@beverleytransport.com.au

Primary Health Services

Available to the community of Beverley

Child Health Nurse - 9690 1320

To make an appointment, Northam Hospital Admin Staff will assist you in setting an appointment time, which will be, on most occasions, a Monday

Northam also provide Child Development Services via referral - 9690 1320

School Health - 9641 0200

Dietetics - 9690 1320

Occupational Therapy - 0429 466 224

Physiotherapy - a doctors referral is required - please send all referrals to PO Box 312 Northam 6401. Clients will be acknowledged with a letter informing them of the approximate wait time.

Podiatry - email: admin@comopodiatry.com.au or call 9450 6200. Attendance is generally a Monday.

If eligible for an EPC Plan which is through referral from a Doctor, Como Podiatry will bulk bill Medicare for a max of 5 sessions per year. Non referral clients are may be eligible to claim Private Health for the \$60 sessions.

A Doctor's referrals are generally faxed to the service provider, Como Podiatry, who contact the patient by phone and make an appointment.

Social Work - Phone 9690 1320

Speech Pathology - 9690 1320

These services are provided by WA Country Health Service and are free of charge. If you have any concerns about your own health or your child's health and development, please phone the relevant health professional to discuss your concerns.

Alternatively, you can speak to the Child Health or School Health Nurse, or your GP, to discuss your concerns and to determine the most appropriate referral.

Avon & Central Primary Health Promoting Healthy Lifestyles



Star Hearing Consultants

Hear Better To Live Better | INDEPENDENT AUDIOLOGISTS

Expert Hearing Care Services in **Beverley & Brookton**

Do you have
Hearing difficulty / Tinnitus (Ringing in the ears) ?



Check our Google reviews
to see what our patients say about our services!

1 Hour Free Assessment

For Limited Time only

Treating Hearing loss improves...

- ➔ Memory / Reduces the Risk of Dementia
- ➔ Safety and Balance
- ➔ Brain Function / Cognitive ability
- ➔ Long and Healthy aging
- ➔ Mental and Emotional Well being

Are you a Pensioner / Veteran?

No out of pocket cost to you...

You are eligible to have these tiny hearing aids under the Government Funded Hearing Service Program (HSP)



These days...

Hearing loss is more visible than hearing aids

Free

Test

Free

Hearing aid Fitting

Free

Trial

Regular Clinics in both Medical Centers

Beverley & Brookton	Beverley & Brookton
Viines Medical Practice	Beverly Medical Practice & Saddleback Medical Center

To book a Free Hearing Assessment

Call : 1800 11 4327

Or ask at the Reception / your Doctor



1800 11 HEAR / 1800 11 4327



www.starhearing.com.au



AVON TERRACE DENTAL | YORK
your smile. our passion.

Now Open 9am to 5pm Monday to Friday!

Our Services:

- Preventative and General Dentistry
- Children's Dentistry
- Anxiety Management
- Cosmetic Dentistry
- Implants
- Endodontics
- Crown and Bridge
- Teeth Whitening
- New Dentures and Repairs
- Emergency Dental Care
- Veterans' Affairs

*New
Patients
Welcome!*

Participating provider for

129 Avon Terrace
York WA 6302
(08) 9641 2123



York
Estate Agents

York Estate Agents
(Beverley Division)

Good, Bad or Ugly We Sell!

Free Appraisals

"Properties WANTED we have qualified buyers waiting now"

Estate Experts
Professional and Trustworthy

Residential and Rural - Mike Bawden

0403 268 158

Rentals - Jenette Callaghan

0418 929 011

Office - 9641 1335

Email: yorkfn@westnet.com.au

www.yorkfn.com.au

BEVERLEY STORAGE & TOWING

HUGE NEW PREMISES LOCKED & FENCED

\$100 A MONTH CARS, CARAVANS, BOATS, MOTORHOMES WE HAVE ALL OF YOUR STORAGE NEEDS COVERED.

TILT TRAY WITH WINCH CAR TRAILER
PICK UP AND DELIVERY - ALL AREAS

BRETT HIGGINS
0400 048 976

beverleystorage@hotmail.com
www.facebook.com/BeverleyStorage



WANTED



BLOWNOUT SHEARERS

Contact: Jack Dugan Phone: 0450609281

Email: surebetss@hotmail.com

Shearing services provided, cost plus rate or cocky shearing, full crew up to five stand available, clean, tidy, professional 25 years industry experience.



Supply and Installation of all types of air-conditioning and refrigeration systems. Split, Ducted, Evaporative, service and repair to domestic, industrial and commercial.

Throughout the Avon Valley and Wheatbelt, no job too far, call Mark for a free quote

Email valleyaircon@outlook.com ARC Lic AU42118

BEVERLEY DESIGN

Renovations,
Alterations, BBQ's,
Brick Fences, Steps,
Retaining Walls,
Brick paving laid in mortar

Phone

Michael 0407 645 001

Barry 0417 181 724



TAX RETURNS

FORTIZ BUSINESS SOLUTIONS

(Registered Tax Agent
&
Certified Public Accountant)

Tax Returns for all entities
Business Consulting
Software solutions / setup
Bookkeeping / Accounting

OFFICE HOURS:

FRIDAY 9.00am – 4.30pm

101 VINCENT ST (Bankhouse) BEVERLEY

Please phone for an appointment

9646 0282



LOCAL BUSINESS, SERVICING BEVERLEY FOR OVER 10 YEARS

Beverley Earthmoving & Grading

GRADER - BACKHOE - BOBCAT
TIP TRUCK - EXCAVATOR
SIDE TIPPER - DOZER

ROAD BUILDING AND MAINTENANCE
FIRE BREAKS - CONTOUR BANKS - ROADED CATCHMENTS
HOUSE PADS - SEPTIC SYSTEMS - SAND, GRAVEL AND BLUE METAL
DAM BUILDING AND CLEANING

CALL- DAN WILKINSON

0417 093 090

EMAIL- DAN.ZOE@PM.ME

WWW.FACEBOOK.COM/LITTLECOHILLEARTHMOVING/

OPTOMETRIST
AVAILABLE ON
TUESDAY'S
in Beverley



Peter Tidman OPTOMETRIST

If you are over 65 years of age,
you are entitled to a yearly
bulk billed check-up.
We encourage you to keep
on top of your eye health.

You can find us at the
RSL Hall, 50 Forrest Street, Beverley.
Appointment bookings
Please call Beverley CRC 9646 1600.



BEVERLEY ELECTRICAL SERVICES

BEVERLEY ELECTRICAL SERVICES

EC 006578

*Proudly servicing Beverley and surrounding
districts since 2010, this locally owned
family business can help you with all your
Electrical needs*

Karl and his team offer

All your General Electrical Requirements PLUS

- Cel-Fi Mobile Boosters
- Quality LED Lighting Solutions for any application
- Split Air Con Installations
- Trenching for underground power
- Quality Solar Systems
- Telephone & Data Cabling

Call Karl on
9646 1222

4 De Lisle Street, Beverley
sales@beverleyelectrical.com.au

NATWAY FURNITURE & CONSTRUCTION

ABN: 62 824 726 465

WAYNE & NATALIE ASHWORTH

Qualified Carpenter &
Joiner Tradesman

General Building Work

Furniture Construction
& Restoration

CONTACT US
27 Brooking Street, BEVERLEY

Wayne 0417 973 415
Natalie 0429 491 039
natwayfc@bigpond.com

SARAH SOMERS

LAWYER

SERVING THE WHEATBELT COMMUNITY

Family Law - Divorce - Separation
Property Settlement - Restraining Orders
De Facto Relationships
Children's Issues - Contact/Residence
Competitive hourly rates
Reduced fee for Initial Consultation

85 Fitzgerald Street, Northam WA 6401

9622 9687

sarahsomers@iinet.net.au

SHEDS FOR ALL PURPOSES



Offering robust protection from the elements, our Australian standard modular building systems are engineered for strength in all conditions.

Designed for the agricultural and hay markets, with the flexibility to suit many other applications, our shed range will safeguard your valuable farm machinery and business assets.

- Supply only or supply and install options available
- Western Australian owned and operated business
- Locally manufactured products and components
- Standard and customised designs
- Fully bolted framing system
- Project management services including council approvals
- Registered builder with an extensive farming background



With an extendable modular design including optional bay and end wall additions plus self-build to fully installed options, there's a customisable system to suit your needs now and for years to come.

www.phoenixbuildingsystems.com.au

0427 424 672

ryan@phoenixbuildingsystems.com.au

Beverley Boys in Blue



In February 2022 there has been two separate incidents in Beverley townsite and on the open road whereby drivers of motor vehicles and motor bikes have been 'hooning'. This will not be tolerated by police at Beverley.

These two vehicles have been seized for 28 days and the persons responsible will be facing the Northam magistrates' court for their behaviour.

If Beverley police see anyone 'hooning' or disobeying traffic rules and regulations they will be dealt with firmly but fairly by the officers.

A big thank-you to Northam traffic who are working with Beverley police in keeping the roads safe and reducing the road toll of Western Australia



Easter holidays are fast approaching, and you are reminded to drive with care and take your time when travelling – remember double demerit points over the easter holidays. We all want you to have a pleasant holiday and come back safely

BEVERLEY POLICE – HOW TO CONTACT US

Life threatening or an emergency dial **000**

For all other matters phone **131 444** or **9646 3333**.

If it's not urgent send us an email Beverley.Police.Station@police.wa.gov.au or leave us a message on twitter [@BeverleyPol](https://twitter.com/BeverleyPol)

Please take care and stay safe.

Sergeant Terry O'DEA and Senior Constable John LINES

The Station Garden is available for public use at any time; just open the gates and enjoy!

COVID-19 UPDATE:

Proof of Vaccination must now be shown on entry to the Station Gallery, as well as the wearing of masks. Please practice good hygiene and physical distancing at all our events, and use the hand sanitiser stations provided. If you are feeling unwell prior to events, please do not attend.

 **Beverley Art Prize & Easter Art Exhibition**

Entries are now closed for the big Easter Exhibition – Beverley’s 53rd Art Purchase Exhibition Thursday 14 – Monday 18 April 2022. And Judging by the close to 300 entries (most within the last week!), it’s going to be a fine exhibition.

Be ready for a feast for the eyes, and if you’re hoping to buy a piece of art this year, remember you have to be quick on opening night or the one you really like will be snapped up. Also remember that you can view the exhibition on Thursday 14th from 11am – 4pm but, sales don’t commence until that night at the **Official Opening 7-10pm – ALL WELCOME \$10 entry fee.**

In the leadup to the exhibition there is much to be done and helpers from the community are always welcome. If you are a willing worker for the following dates, please contact the BSA Exhibition Secretary Ashton Edmunds by email: admin@beverleystationarts.com
Sunday 10 April 9am start – unpacking paintings
Monday 18 April 2pm start – repack unsold paintings

 **Artists-in-Residence at the Station**

Artists-in-Residence for March:



ROSLYN NEWICK was our AiR for second half of March. Ros attended Beverley Easter Markets last year with her quirky Tea Cosies and she had a workshop on the making of such along with a high tea on Sunday 27 March.

Believe it or not, with the town’s main street closed for the entirety of her stay, Ros had quite a few through the Gallery which she had it looking superb with her many different art genres displayed.

Artists-in-Residence for April



Our Artist in Residence from the 1st to the 9th is Ross Calnan who believes that art has no rules – that it allows him to express himself freely with vibrant colour and does not depend on interaction with others. He has been fortunate to

live, work and travel in many countries but finds his deepest inspiration in Australia.

Ross won’t be holding any workshops whilst at the Station, but do drop in to see his works in progress as he continues his search for the his *Holy Grail* - finding the balance between realism and abstraction!

Then our Artist in Residence 10th to the 28th of April is award winning artist David Giles.

David will be hosting a number of workshops during this period that explore expressive approaches to painting with a strong focus on



letting go and becoming authentic and honest in our expression. See workshop details on following page.

Artists-in-Residence for 2022

- JAN: Tracey McDonald
- FEB: 1-15 Paula & Julian Canny / 17-2 Lori Neuzerling
- MAR: 15-31 Ros Newick
- APRIL: 1–9 Ross Calnan / 10-28 David Giles
- MAY: Shireen Manning
- JUNE: 1-15 Marie Scobie / 16-29 Julie Parsons, P Clarke
- JULY: 30(June) – July 12 Lorraine Pichugin
- JULY: 14 - 9(Aug) Tich Dixon Aug JULY: 15 -
- AUG: 11-30 Steph Boyle
- SEPT: 1-29 Thelma Cluning, Carol Patch, Gene Ross
- OCT: 1-16 Trish Davis / 17-23 Natalie Blom
- NOV: John Kaye
- DEC: 1-14 Adrianna Wasinska-fabian
- DEC: 15-31 Kelsey Diamond

The David Giles Freedom School
2022 One Day Beverley Workshops
“Expressive Painting”



In all of these workshops we will explore **expressive** approaches to painting. There will be a strong focus on **letting go** and becoming authentic and honest in our expression.

Monday 11 April and Monday 18 April - A sense of place - painting our feelings about a place that means something to us

Tuesday 12 April and Tuesday 19 April – The inner child – letting go and painting from our inner child

Wednesday 13 April and Wednesday 20 April – Self Reflection – painting intuitively to *discover* how we feel

In these workshops I will do a main demonstration at the start and work on the paintings during the day. Each workshop we will have a show and tell review before lunch and at the end of the workshop. *All workshops will have maximum group size of 8.*

Time: Each One Day Workshop runs 10am – 5pm (1 hour lunch break)

Cost: \$100 each One Day Workshop.

BYO snacks and lunch or visit local cafes BYO art materials, acrylic paints and canvases

Cost to attend 3 consecutive workshops \$250.

Suitable for all levels of experience from complete beginner to professional experienced.

Full payment of fees is required to book your place. Fees are not refundable unless cancelled by David Giles.

To book your place contact David Giles at davidgilesartist@hotmail.com or 0416 079 204

www.davidgilesartgallery.com

“If you’ve ever thought of what it would be like to paint intuitively, freely and expressively, how that might feel, I can tell you it’s wonderful, liberating and gives you genuine and invaluable insight into your deepest self, your inner creative self. If you are an artist and what to explore your true authentic artistic voice join me for one or all of these workshops.”

Station Gallery Open Hours:

11.00am – 3.00pm

Thursday, Friday, Saturday and Sunday



Beverley Station Singers

Unfortunately, due to recent Covid regulations preventing non vaccinated people inside the Station Gallery and Greenroom of the Platform Theatre, the group has gone into recess before reconvening. For further information regarding recommencement of the Station Singers at the Station please contact Sarah Miller who coordinates the group - Ph: 0427464078

PIRATES OF PENZANCE is Gilbert and Sullivan production performed by our local BAD (Beverley Amateur Dramatics)

Beverley Amateur Dramatics (BAD)

Please accept my apologies, readers, for preempting the new dates for *Pirates of Penzance* following postponement of the performance in accordance with Covid policy. The following dates are final unless there are again unforeseen circumstances!

NEW DATES FOR:

PIRATES OF PENZANCE

FRI 7 OCT & SAT 8 OCT

& FRI 14 OCT & SAT 15 OCT

BOOKINGS: www.taztix.com or CRC





PERFORMING ARTS



At the Town Hall

Perth Symphony Orchestra (PSO) is coming to Beverley so be prepared for a night of magical musical harmony! S.T.R.I.N.G.S - *Quartet Gone Rogue* is 70 minutes of fun, laughter and storytelling. With a set list covers the likes of Mozart, Britney Spears, Queen and Nirvana and many more, this unique performance has more in common with a Beatles gig than a classical recital! You will see a string quartet in an entirely new light - this is a show not to be missed, followed with a fun half hour of Q and A to end the night. Suitable for ages 12+

Doors open at 6.30pm, giving you plenty of time to purchase a scrummy meal from *Bellissimo* caterers in the Lesser Hall. There is no bar for this night so BYO drinks. Phone : 0417 983 410 to book tables. Rowed seating at the front.



Also Coming soon to Town Hall!

Festival of Small Halls brings to Beverley on **Wednesday 4 May** three amazing musical storytellers:



GINA WILLIAMS and **GUY GHOUSE** use their music and performances to highlight one of the most beautiful and rare languages on the planet; the Noongar language of the southern corner of Western Australia. They are a multi-award-winning duo, but don't let that fool you – they'd much rather allow their performances and the power of the music they create speak for itself.

JACK DAVIES - From singing about seagulls to mumbling poems of sorrow, Jack's songs like to laugh, poke and long-ingly stare at the world. Regarded as one of WA's finest up and coming songwriters, the young singer cut his teeth busking in cafes and busy streets before rising to prominence with his indie folk band "Jack Davies and The Bush Chooks"



For further details of this special event please keep an eye on the weekly Bulletin!

2022 PLATFORM THEATRE CALENDAR OF EVENTS

February 18: Friday – *Lisa Woodbrook – Feeling Way Too Good*

March: *Pirates of Penzance* – POSTPONED

April 2: Saturday at 7.30pm – Perth Symphony Orchestra *A String Quartet Gone Rogue*.

April 16: Saturday *Easter Markets at the Station*

May 4: Wednesday 4: Festival of Small Halls touring Gina Williams and Guy Ghouse, and Jack Davies.

July 8: Friday *Cloud Nine (The Giovanni Consort)* at 2pm and 6pm - *Exquisite choral soundscapes in the dark*

September 3: Saturday at 2pm *VoiceMoves Choir Muster*

September 24: Saturday *Spring Back to Beverley* with *Eurokats* band

October 27: Thursday at 7pm - *Toni Galati the Musical*

November ? : Saturday - *Tribute show*

December 17: Saturday – *Community Christmas Party* featuring *Yuck Circu*

PERTH
SYMPHONY
ORCHESTRA

BOOK YOUR TICKETS!



PERTH SYMPHONY
ORCHESTRA PERFORMS

S.T.R.I.N.G.S

A QUARTET GONE ROGUE

SATURDAY 02 APRIL 2022

GATES OPEN 6:30PM, SHOW STARTS 7:30PM

ADULTS: \$35 CONCESSION: \$30 U/12: \$15

TICKETS: BEVERLEY CRC OR TRYBOOKING.COM/BXAXD



WARBURTON



Beverley Amateur Swim Club

The Beverley Amateur Swim Club 2021/2022 season was finalised on Friday 25th March. The award winners were:

Club Points Champion
Ashlyn Higgins (167 points)
Runner up club points
Alec Murray (166 points)

Most Consistent
Patrick Farr (17 points)
Runner up most consistent
Ashlyn Higgins (15 points)

Most Improved
Abigail Bailey (14 points) (most 7's)
Runner up most improved
Ruth Elsegood (14 points)

Age Group Champions
6yrs Girl
Champion: Zara Copping (27 points)
7yrs Girl
Champion: Claire Bailey (47 points)
Runner Up: Heidi Mann (23 points)
7yrs Boy
Champion: Alec Murray (71 points)
8yrs Girl
Champion: Amelia Copping (88 points)
Runner Up: Sienna Shaw (29 points)
9yrs Girl
Champions: Pippa Murray & Ruth Elsegood (54 points)
Runner up: Ashlyn Higgins (40 points)
9yrs Boy
Champion: Billy Farr (76 points)
10yrs Girl
Champion: Abigail Bailey (67 points)
Runner up: Ruby Charles (53 points)
10yrs Boy
Champion: Noah Shaw (74 points)
11yrs Girl
Champion: Alice Hammond (57 points)
Runner up: Takara Shilling (53 points)
11yrs Boy
Champion: Burke Murray (91 points)
Runner up: Keenan Montgomery (49 points)
12yrs Girl
Champion: Temahila Kitai (72 points)
12yrs Boy
Champion: Nixan Higgins (51 points)
13yrs Boy
Champion: Patrick Farr (82 points)

15yrs Boy
Champion: Riley Schiller (68 points)
Congratulations to all the winners.

The AGM was held after the presentations and a massive thank you to the outgoing committee for organising swim club for the 2021/2022 season.

Good luck to the new committee

2022/2023 committee are:

President: Hollie Smith

Vice President: Jo Copping

Secretary: Carissa Shaw

Treasurer: Christine Hagan

Recorder: Narelle Bailey

Coach: Jacinta Murray

Assistant Coach: Jodie Bell

Committee: Mark Bickley, Walter Orchard, Damien Murray, Michelle Garwood, Kelly Mann, Amanda Farr, Tamara Nixon and Rebecca Buglass.



VINES MEDICAL TEAM

Dr Adebola (Andre) Oladipo
Dr Esther Oladipo
Dr Alan Roustami
Dr Jasmin Tan

Practice Nurse
Vitou Norea Yem

ALLIED HEALTH TEAM
Ryan Woodbury- Chiropractor
Viney Lewis – Podiatrist
Emma Kwok- Dietitian

OPENING TIME
9am-5pm -Monday- Friday
Saturday -9am-12noon.
Phone-9646 1125 / 9468 3606

Online Appointments Now Available. Book at www.vinesmedicalpractice.com

Address: 135 Vincent St, Beverley WA 6304



BEVERLEY COMMUNITY GARDEN

FUNDRAISING RECYCLE PICKUP



If you have any plastic or glass bottles or cans to be recycled, please consider donating them to your Community Garden.

We will pick them up from you if you ring us.

Betty 0400 569 971
Maureen 0429 460 073
Dorothy 0429 989 031.



Visit the
Dead Finish Museum



Oldest building in Beverley, built in 1872 as the "Wheatsheaf Inn".

Corner of Great Southern Highway and Morrison Street, Beverley WA

**10 furnished rooms of memorabilia of Beverley town and district.
Featuring the Beverley Room, a large collection of photos and history
of local organisations, school photos and identities.**

ADMISSION ADULTS \$2

CHILDREN FREE WHEN ACCOMPANIED BY AN ADULT

Open 11.00am to 3.00pm Sundays or by appointment

Mid March to November.

Closed from December to early March.

Parking available on Morrison Street. AVMCF Venue.

Contact: bhsdeadfinish@gmail.com

0427 411 881 - Joy

9646 1149 - Maree

9646 1075 - Delys



Be very historic

Beverley WA
Be very you

LOOKING TO DOWNSIZE?

Hunt Road Village will soon have units available for rent. The waitlist is often long so we recommend registering your interest.

Located on Hunt Road, all units are 1 bedroom, 1 bathroom and each has its own parking space. The conditions of rental include: applicant must be 54 years of age and over, ability to care of yourself, a bond payment equivalent to 4 weeks rent and the first rental payment is payable in advance. Rent is currently \$150 per week and is reviewed annually.



Please email admin@beverley.wa.gov.au or call into the Shire Office for an Application Form and full list of Terms and Conditions.



OP SHOP

Open Fridays

11:00am - 2:30pm

April Roster

Apr 01

Leita Barrett-Lennard, Dedrie Gowland, Allsa Elston

Apr 02 (9am - Noon)

Glenys Lan, Janice Sherwood

Apr 08

Erica Murray, Dalene Davis, Pat Pepper

Apr 15

CLOSED- Good Friday

Apr 16 (9am - Noon)

Leita Barrett-Lennard, Ingrid Bell

Apr 25

Jo Sims, Gracie Courtney, Pat Bekkers

Apr 29

Sandy Shaw, Anne Jordanff, Allsa Elston

Apr 30 (9am - Noon)

Betty Wauchope, Sandy Shaw

May Roster

May 06

Janice Sherwood, Beverley Hoey, Lee Storer

May 07 (9am - Noon)

Glenda Burns, Jo Sims

May 13

Betty Wauchope, Ann Bolger, Gail Alabach

May 20

Cherril Paskov, Joy Smith, Roma Ladiges

May 21 (9am - Noon)

Christine Brooke, Donna Williamson

May 27

Betty Lobb, Denise Hales, Helen Revill

Any further information, contact Glenys Lane on 0437 807454



Shire of Beverley Shire Notices



Annual General Meeting of Electors

Notice is hereby given that the Annual General Meeting of Electors for the 2020/21 financial year will be held in the Cornerstone Community Centre,
141 Vincent Street, Beverley on TUESDAY, 5 APRIL 2022, commencing at 10:00am.

Order of Business

1. Adoption of 2020/2021 Annual Report
2. General Business

As per Section 5.5 of the *Local Government Act 1995* copies of the 2020/2021 Annual Report are available from the Shire Administration Office, located at
136 Vincent Street Beverley, during normal office hours or on the Shire website.

To enable staff time to adequately research answers to questions, it would be appreciated if such enquires could be lodged at the Shire Office at least seventy two (72) hours prior to the scheduled commencement of the meeting.

Following the Annual Electors meeting, a community consultation on the Avon River Concept plan will be presented.

STEPHEN P GOLLAN
Chief Executive Officer

Land Administration Act 1997

Proposal to Dedicate a Road - Off Tip Road, Beverley

Notice is hereby given pursuant to Section 56 of the Land Administration Act, 1997, that the Shire of Beverley is considering to dedicate a section of land as public road.

Plans explaining the proposed road dedication are available for inspection at the Shire of Beverley, 136 Vincent Street Beverley, and will be open for inspection during office hours 8.30 am to 4.00 pm

Submissions on the road dedication may be made in writing and lodged with the undersigned within 35 days from the date of the publication of this notice. For further information contact Shire Planner, Stefan de Beer on 9646 1200 or stefan.debeer@beverley.wa.gov.au

Stephen Gollan
Chief Executive Officer

BURNING DURING APRIL

The Restricted Burning Period is due to finish on 31st March 2022.

No Permit to Burn is required from April 1st however all caution and consideration of weather conditions both at the time of your burn and in the days afterwards should be exercised to prevent your burn from becoming an expensive escape.

NO BURNING of paddocks or bush is permitted over EASTER from midnight on Wednesday April 13th until midnight on Monday April 18th. A small fire of less than 1 cubic metre is permitted outdoors for cooking or socialising. These small fires must be fully extinguished before they are left unattended and please exercise the proper caution in this current environment.

Stephen Gollan
Chief Executive Officer

AVON RIVER PARK REDEVELOPMENT



COMMUNITY CONSULTATION

Tuesday 5th April 2022 @ 11.30am
Cornerstone Building Meeting Room

*Proposed concept designs will be presented
by Sprout Studio*

Morning Tea Provided

Please RSVP your attendance to projects@beverley.wa.gov.au
or via the Shire Office on (08)9646 1200

EVENTS AND WORKSHOPS IN APRIL

Makeup Workshop

We are so excited to have Courtney Hooper coming to Beverley to do a makeup workshop, teaching us how to get killer brows, contouring techniques and how to take that day look to a night time look.

Originally from York, Courtney has been in the makeup and beauty industry for 11 years, working for international cosmetic brand, Bobbi Brown Cosmetics before she developed her own business Hooper Artistry. She is one of Perth's most sought after artists, specialising in bridal & event makeup and regularly travelling around WA for weddings and events collaborating with Perth's most talented creatives. If you want learn from one of the state's best makeup artists then book now as tickets are limited!



MAKEUP WORKSHOP
with **Courtney Hooper**
HOOPER ARTISTRY
WEDNESDAY 13 APRIL 22
10AM TO 3PM

Limited Tickets
\$40 PER PERSON (33+)
INCLUDES TUITION + LUNCH
+ BEAUTY MIRROR

KILLER BROWS
DRAMATIC EYES
CONTOURING
DAY TO NIGHT LOOK

Beverley CRC 08 9646 1600 141 Vincent Street Beverley



FRIDAY BINGO
Beverley Cornerstone - 141 Vincent Street
Friday 29 April 2022
Eyes down 1pm - Finishing 3pm
Afternoon tea available
For more information contact Sam 9646 1600

Gardening Workshops

If the cooler weather hasn't inspired you to get out into the garden yet, then surely ABC Radio's gardening guru, Sabrina Hahn will. Our workshop at the Community Garden. Coming to Beverley on Monday 04 April, Sabrina will be teaching us about managing gardening pests naturally.

Then two weeks after the Pest Management workshop, on Tuesday 19 April, we have Janine from Zanthorrea Nursery coming to educate us on Bush Tucker food. It's going to be a busy month down at the Community Garden, so get your diary's out and book the dates.



Supported by Department of Communities

GARDEN workshop MONDAY 04 APRIL

Beverley Community Garden
10.30am start
\$5 per person
RSVP 9646 1600

Pest Management presented by Sabrina Hahn



BUSH TUCKER
Information Session & Community Planting Day

Tuesday 19 April 2022
Beverley Community Garden

10.00AM REGISTRATIONS
10.30AM WORKSHOP
11.30AM LIGHT LUNCH
12NOON PLANTING

Janine is a Bush Tucker expert and the owner of Zanthorrea Nursery. She will be giving us hints, tips on bush tucker plants that are suited to our area. We will be planting our bush tucker garden after the workshop. If you would like to attend, please call 9646 1600 to register.



LEGO CLUB
LET'S BUILD, PLAY & LEARN

BEVERLEY CRC FOR KIDS 5 YEARS OLD AND UP
\$2 PER SESSION INCLUDES HEALTHY SNACKS
CALL 9646 1600 FOR MORE INFORMATION



WIN DYSON VACUUM

12 week cleaning + declutter challenge

\$20 entry fee

Registrations close 01 April
Challenge start 04 April

The more challenges completed the more chances to win!

Every completed weekly challenge gives you one cleaning token into the draw *conditions apply.
Bonus cleaning tokens are up for grabs by completing **Bonus Challenges** throughout the challenge.

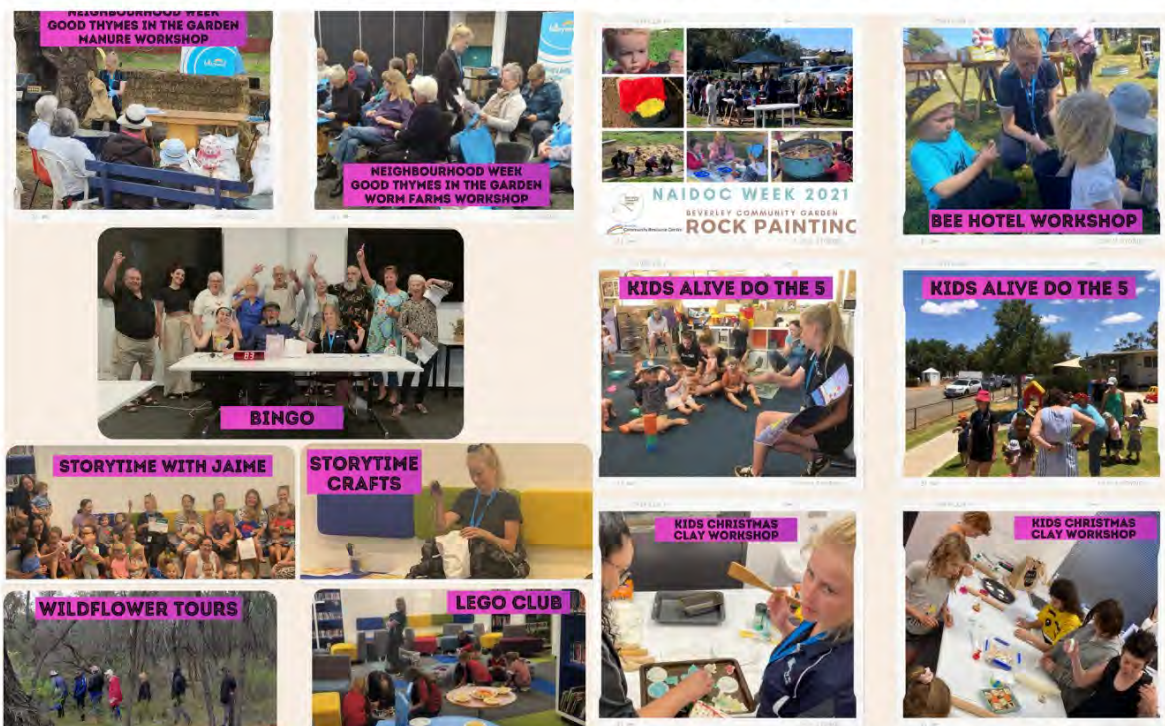
We welcome 2 new employees

We are pleased to announce that the traineeship position at the CRC has been filled, by Alyssa Szekeres.

The 12 month traineeship will see Alyssa studying for a Certificate in Tourism and whilst working at both the CRC and the Shire of Beverley.

We would like to thank the Department of Primary Industries and Regional Development for funding the traineeship program. Our centre has had a 100% success rate with the program, we have provided 8 trainees the opportunity to work and study before heading out into the workforce.

We are also very happy that our last trainee Jaime Williamson, completed her traineeship early, and that she accepted the offer to stay on at our centre as the customer service officer/librarian. Congratulations Jaime, the management committee and staff look forward to the working with you and seeing you bring new programs and events to our wonderful community. Below are some of the programs and events that Jaime has introduced and been involved in over her time as a trainee.



Upcoming events & workshops

STREET FOOD PROJECT - MAY

Feed our community with street food is a project supported by our local Shire of Beverley. We will be planting fruit trees around our town site and we will be bringing a fruit tree expert to Beverley to teach us about pruning and maintenance. **Free event.**

PLANNING YOUR FUNERAL - MAY

We are holding an information session with the team from Purslowe Tinetti Funerals in Northam, on how to plan your funeral. These sessions are always well attended, so be sure to get your expression of interest in early. *Date to be confirmed.*

HOW TO BUILD A BIRD HOUSE - JUNE

Do you want to attract more birds and wildlife into your garden? These bright birdhouses will not only attract birds but look fantastic. **\$15 per person.**

Services WA update

We have been busy at the CRC assisting our local residents installing the Services WA app on their smart phones to ensure they have their COVID certificates available when entering mandated establishments. This service is free, but only available by appointment due to the length of time it takes to set up accounts and install the multiple apps needed. If you require assistance, please contact the CRC to book your appointment.

On a more serious note, we feel it's important to point out that many people are risking their private information by copying their drivers licence onto the back of their COVID certificate prior to laminating into a wallet size card. Whilst this is seemingly convenient for identification purposes, please be aware that you are opening yourself to identity theft and fraudulent activity by having these two documents combined.

If you misplace or lose this one card it could be disastrous both mentally and financially. We are happy to reduce and laminate the COVID certificate, but we strongly recommend against putting your driver licence on the other side, it only takes a minute to pull out your identification but takes years to build up your bank balance.



BEVERLEY MEDICAL PRACTICE



Providing excellent quality health care to the community of Beverley and the surrounding areas for over 30yrs
Located at the corner of John and Forrest streets (diagonally opposite the Beverley Hospital)

"Cullen House"

106 Forrest Street, PO Box 434

Beverley WA 6304

Ph: 08 9646 1241 Fax: 08 6117 0410

Email: beverleymedical@westnet.com.au

**The Beverley
Medical Practice
Bulk Bills patients
with a current
Medicare card**

OPENING HOURS

Monday to Friday

9am to 1pm & 2pm to 5pm

(Closed Sundays and Public holidays)

General Practitioners

Dr. Remi Adebayo, Dr. Olay Omoniyi, Dr. Sola Oyetunji,
Dr. Tola Ogunleye

Practice Nurse – Lynley, Marceline, Kathleen

Monday to Friday 9am – 4pm

BP checks, ECG, woman's health, pap smears, spirometry, vaccinations, counselling, My Health,
Drivers and Health Assessments, wound care etc

Your friendly practice team

Practice Manager – Dawn

Receptionist – Kris, Mary and Emily

Brookton Medical Practice now open Mon to Fri

Saddleback Medical Centre

27 Whittington Street, Brookton 6306

Ph: 08 9642 1485

Allied Health Services - Diabetes Educator, Dietician, Physio, Podiatry, Chiro, Counselling etc.

Practice News!!

COVID VACCINATION CLINICS

Be prepared, get vaccinated

Call our friendly reception staff to book your 1st, 2nd or booster on 08 9646 1241

We would like to introduce the newest member of our team Dr Tola Ogunleye,

she is specialising in women's health. Please book in for your women's health issues, Pap smears, etc.

The Beverley Medical Practice is committed to providing quality health services to Beverley and surrounding areas.

As part of our commitment to the community we support and assist up and coming medical health professionals. We have a number of student GP's attending clinics both onsite and virtually.

These Student GP's are from Notre Dame, UWA and Curtin University

If you are interested in assisting us by allowing one of our students to sit in on your consult or attend a virtual clinic over the phone please let our staff know.

INFLUENZA IMMUNISATION

We are fast approaching the flu season and the government funded influenza immunisation program (WA) is due to start this month.

- ✓ Annual vaccination is the single most effective measure to prevent influenza and its complications.
- ✓ Protection against influenza starts to wane within 3 to 4 months following vaccination
- ✓ Providers will be informed via on-line ordering in early April and we can then let our patients know when the vaccine will be available.
- ✓ All products supplied are quadrivalent influenza vaccines (QIVs) and are latex free.
- ✓ The dose of influenza vaccines for all ages is 0.5ml including for young children
- ✓ For adults aged over 65 the adjuvanted QIV, Flud Quad is recommended over standard QIVs.

Care outside normal opening hours - When the Beverley Medical Practice is closed you can always get medical attention by calling-
Ready Care 1800 225 523 or Calling health direct 1800 222 222 or by attending the Beverley District Hospital, located in Sewell Street

Beverley where experienced staff will triage the patient and contact the on-call Doctor

For all Emergencies call 000



BEVERLEY REDBACKS HOCKEY CLUB



2022 Hockey Season

The Beverley Redbacks are excited to prepare for another season of Hockey! The year is already shaping up to be one to remember, with plenty of new players and even our first juniors hockey team taking to the field. At this stage fixtured games are likely to start in the last weekend of April so keep a eye out on our Facebook page for the finalised fixtures.

Expressions of Interest

Are you looking for a bit of fun and fresh air? The senior Beverley Redbacks hockey team are a fantastic bunch of woman who support each other and share a love of hockey. All players are welcome regardless of experience or skill level. If you are interested in finding out what we're all about contact us or drop by one of our evening trainings In early April. We are now accepting player nominations from both new and existing members so if you are keen to play contact us for a nomination form.

New Juniors Hockey team This year we are so excited to be running our very first Junior Redbacks hockey team. The format of the season will depend entirely on the number of kids who sign up but no matter the numbers we are committed to providing an awesome program for our upcoming stars. For more information please contact our Juniors coordinator, Kelly Mann (0428779234), or our team secretary using the contacts below.

Coach Wanted We are now accepting *Expressions of Interest for Team Coach Role*. If you are an experienced hockey player or team coach and are interested in the position please call or email our secretary by the 15th of March.

Events

Fixtured games are expected to start the last weekend of April

Training is scheduled to begin in the first week of April at the Beverley oval and we will be taking a team vote for which day of the week suits best.

The first training of each month we will host a *team dinner* at the Beverley tavern as a social event.

Thank you to the providers of the active farmers program who have thoughtfully organised a 6 week preseason fitness program for the Beverley winter sports teams.

Beverley Redbacks Hockey Club Contact Details

Facebook: Beverley Redbacks Hockey Club

Mobile: 0447 811 267 Email: beverleyhockey@live.com.au



VOLUNTEERS NEEDED

For the

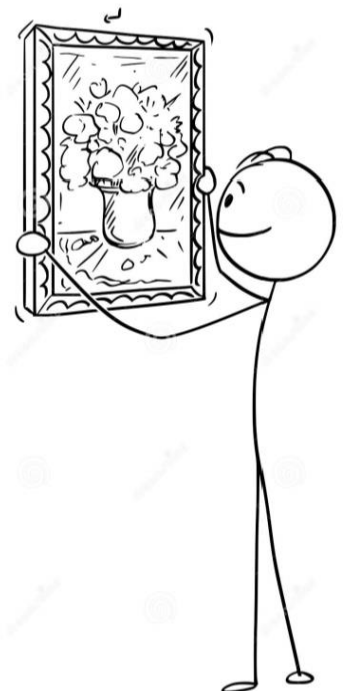
Beverley Art Prize and 53rd Annual Art Exhibition

Unpacking of the artwork will take place Sunday 10th of April
at the Town Hall at 9am.

Repacking the artwork will start at 2pm on Monday 18th of
April at the Town Hall.

Beverley Station Arts appreciates any help you can offer.

Contact Jenny Broun (0419040063) or admin@beverleystationarts.com
with any queries.





The Parish of Beverley – Brookton
Service Times for April, 2022 (Holy Week and Easter Services in Italics)

St Mary's Church, Beverley

Sunday, 3 rd April	9.00 a.m.	Fifth Sunday in Lent - Morning Prayer
Sunday, 10 th April	10.30 a.m.	Palm Sunday - Eucharist
Thursday, 14 th April	6.30 p.m.	Maundy Thursday - Eucharist
Friday, 15 th April	10.30 a.m.	Good Friday
Saturday, 16 th April	6.30 p.m.	Easter Eve Barbecue & Grill
	8.00 p.m.	Easter Day Service - Eucharist
Sunday, 24 th April	10.30 a.m.	Second Sunday of Easter - Eucharist

St Paul's Church, Edward's Crossing

St Mark's Church, Brookton

Sunday, 3 rd April	8.30 a.m.	Fifth Sunday in Lent - Morning Prayer
Sunday, 10 th April	8.30 a.m.	<i>Palm Sunday - Eucharist</i>
Tuesday, 12 th April	6.30 p.m.	<i>Maundy Thursday - Eucharist</i>
Friday, 15 th April	8.30 a.m.	<i>Good Friday</i>
Sunday, 17 th April		<i>5.30 p.m. Easter Day - Eucharist</i>
Sunday, 24 th April		8.30 a.m. Feast Day of St Mark – Eucharist

St John's in the Wilderness, The Dale

Sunday, 3 rd April	9.00 a.m.	Fifth Sunday in Lent - Morning Prayer
-------------------------------	-----------	---------------------------------------

UPCOMING SPECIAL SERVICES IN MAY

Sunday, 8 th May	10.30 a.m.	Plough Sunday at St John's in the Wilderness, The Dale
Sunday, 22 nd May	10.30 a.m.	160 th Anniversary of the Consecration of St Paul's Church, Edward's Crossing
Sunday, 29 th May	10.00 a.m.	Combined Churches' Service, St Mary's Church, Beverley

Plough Sunday (Blessing of the Plough) is a long-standing tradition in rural communities when we think about and pray for those who work on the land, who produce food in our own and other communities; and who seek to be good stewards of creation. In keeping with tradition, a plough and seed are blessed as our farmers prepare the ground and plant the seed this year.

Priest-in-Charge: The Rev'd Canon Dr Philip Raymont

Telephone: 0419177178

Email: praymont@perth.anglican.org

Postal Address: P.O. Box 180, York, 6302

Residential Address: 75 Suburban Road, York

Church Correspondence including St Mary's Society: PO Box 292, Beverley. 6304

Church Website: www.beverleybrooktonanglicanparish.org

Looking After Ourselves in Busy Times

For farmers seeding and harvest are a couple of extremely busy times of the year. One of the most important things to consider looking after, during these times, is our most valuable resource - us.

Having to complete tasks by a set date imposes time pressure and this may make us take short cuts and if we take short cuts regarding our wellbeing it increases our risk factors dramatically. It is a time when relationships come under pressure, our physical health is ignored, and accidents can happen.

Research into truck crashes by the Truck Crash Research Centre based in South Australia has some thought-provoking outcomes. One of the research outcomes is that most truck accidents (more than 90%) happened on the outward-bound journey of the truck trip. We need to ask ourselves why is this? There are many reasons for this, but primarily it is a combination of being physically tired coming off the holiday break and/or mentally our headspace is not focused on the job at hand, we are not operating in the present.

What us blokes don't do well is consider the consequences of *risk taking* - it won't happen to me. Consequences are something we must live with, so in our seeding and harvest preparations we need to limit our personal risk, and if what we're planning is an overstretch, reconsider the options.

In addition to the usual preparations perhaps we should follow the lead of other industries, such as mining and construction, where clear guidelines on safe parameters for work have been implemented.

Some things to reflect on when considering your wellbeing include:

- A well briefed work crew (often our partner and family). Keep those working with us briefed on daily activities, unfortunately with farming this doesn't happen as well as it could which often leads to unnecessary disputes and increased tension and frustration;
- Fatigue management; limiting our working time to no more than 14 hours in a 24-hour period. Seeding might be over a relatively short period, but this work strategy should not be compromised. *The only solution to fatigue is taking a break and sleeping. Getting off the tractor/machine and doing other jobs is not good enough, you need to sleep.*
- Factor in regular breaks; this also reduces the impact of fatigue and increases our capacity to beat boredom, which can often lead to expensive mistakes and machine damage;
- Pre-start exercises; I would be surprised if any farmers begin a shift with some limbering up exercises. It is a known fact that this type of start to the day significantly reduces muscle injuries.
- Suitable dietary needs; how often are you eating and what are you snacking on? It is not just about good meals it is also about good snacks that are nutritious and correctly timed. A good meal is very beneficial at the beginning of a shift and a light meal at the end is beneficial in helping to promote good sleep.
- Adequate sleep; for most people this is about seven to eight hours in every 24-hour cycle. It is not possible to reduce this and still function properly. Remember this is *sleep* not just being in bed!

Seeding and harvest are hectic times of the year, a controlled and planned approach will pay dividends. Enjoy it, it is a great time.

The Team

The Regional Men's Health Initiative
delivered by Wheatbelt Men's Health (Inc.)

PO Box 768, Northam WA 6401

Tel: (08) 9690 2277

menshealth@4blokes.com.au

www.regionalmenshealth.com.au



**ROYAL ANTEDILUVIAN ORDER OF
BUFFALOES**



**GLE (Inc.)
QUAIRADING BEVERLEY No. 163**

We meet the first Wednesday of every month
at the Masonic Lodge, Hunt Road, Beverley

The objects of our order are Philanthropy
and Good Fellowship

For more information contact
Tom 0419 945 240



**THE RELIGIOUS
SOCIETY OF FRIENDS
(QUAKERS)**

Beverley Friends Meeting
Old Catholic School Rooms
Dempster Street

Meeting for Worship
SUNDAY at 10:30am

For more information & enquiries phone
0408 090 345

**BEVERLEY
REAL LIFE
CHURCH**



*Living life with
Christ*

*All Welcome
Every Sunday
10 am*

50 Hunt Road, Beverley

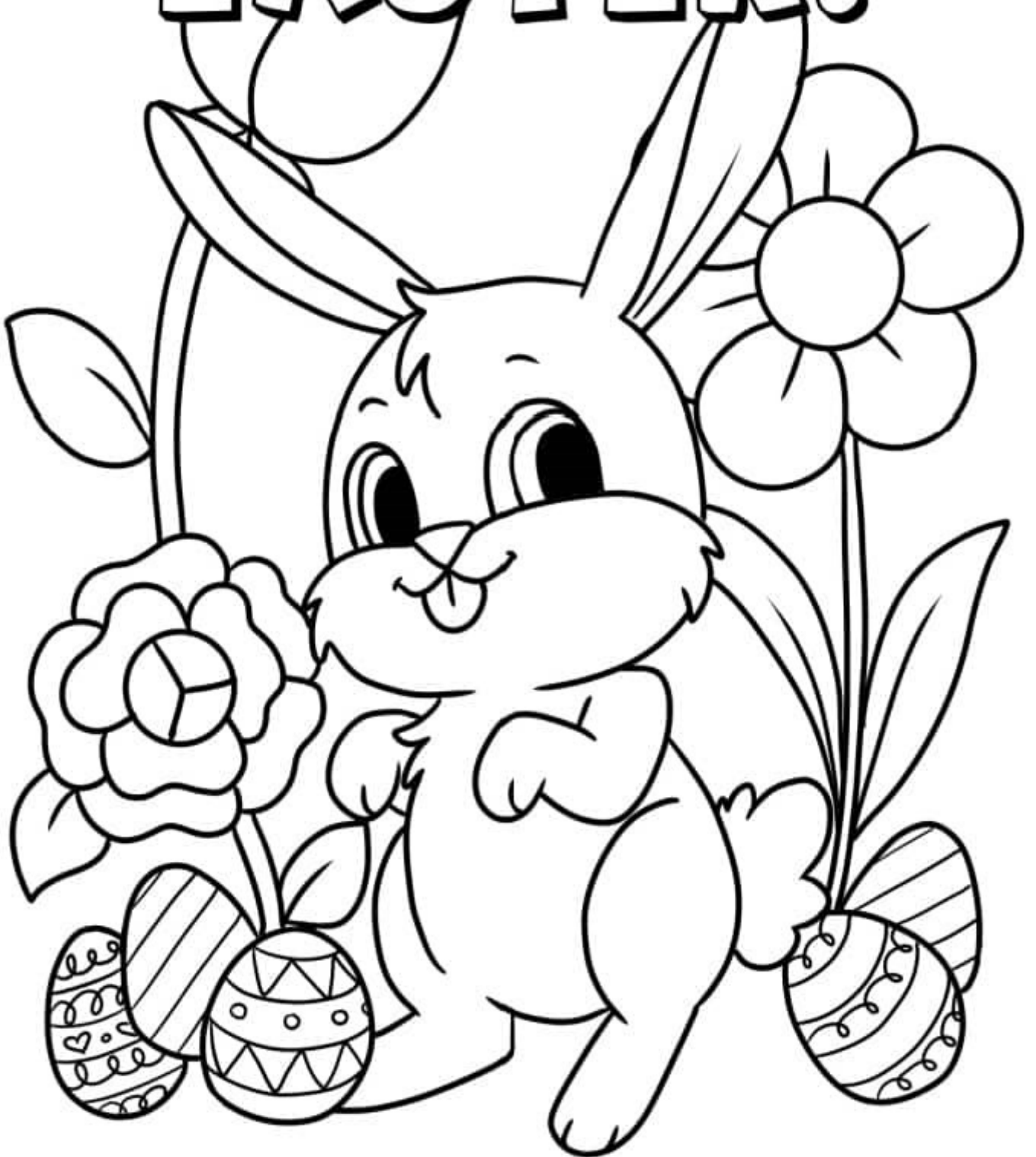


CATHOLIC CHURCH

Service in Beverley
8am; every Sunday
Adoration, Rosary & Mass
2.30pm; First Friday of the month; followed by a
cuppa

at Beverley Sacred Heart Church, Lukin St, Beverley

HAPPY EASTER!



GROUP FITNESS CLASSES

WHEN

Wednesdays
5.15pm & 6.30pm
Fridays
6.00am

WHERE

Beverley
Exhibition Shed

COST

FIRST CLASS FREE
\$15 per class after that

All members of Beverley and surrounding communities are welcome (not just farmers), and all levels of fitness and experience are encouraged to attend!

For more information contact your Active Farmers trainers Ashlyn or Robbie for more information:

Ashlyn Ridgway
0427 461 506
ashlynj@live.com.au

Robbie Wansbrough
0428 843 251
robbie@reapwhatyousow.com.au

<https://www.activefarmers.com.au/beverley-wa>



Saturday 24th September 2022

Spring Back to Beverley Markets

Stall Holders Wanted!

Are you interested in showcasing your items or products?
Maybe you would like to extend your target audience.
Then get in touch and book a stall at the
2022 Spring Back to Beverley Markets.

Booking forms and information to be obtained by contacting
projects@beverley.wa.gov.au

101.3 FM
VOICE OF THE AVON LOCAL RADIO
PROGRAM



SUNDAY

6.00 – 10.00 Sunday Breakfast - Terry
10.00 – 1.00 Easy Sunday - Denni

MONDAY

6.00 – 10.00 Monday Breakfast - Bob
10.00 – 2.00 Monday with Lesley-Ann
2.00 – 4.00 **What's New In Country** - John
4.00 – 7.00 Celtic Note - Joe
7.00 – 10.00 Classical Sounds - Chris

TUESDAY

6.00 – 10.00 Tuesday Breakfast - Bob
10.00 – 2.00 Country Roads - Joe
2.00 – 5.00 **Rockin' on the Avon** - Denni
5.00 – 7.00 Turn it up Tuesday – Michael

WEDNESDAY

6.00 – 9.00 Sunny Side Up - George
9.00 – 1.00 A Little Bit of Everything – Joe-
1.00 – 4.00 Potpourri - Peter
4.00 – 6.00 **John's Jazz Show** - John
6.00 – 9.00 Back to the Future – Frank

THURSDAY

6.00 – 9.00 Thursday Morning - Joe
9.00 – 12.00 Solid Gold Thursday - Frenchy
12.00 – 3.00 Kaleidoscope – Chris
3.00 – 6.00 Drive – Graham
6.00 – 9.00 Tonking Along - Tonks

FRIDAY

6.00 – 10.00 Friday Breakfast - Bob
12.00 – 4.00 **Michael's Mix Up** - Michael
4.00 – 8.00 Friday Night Live - Terry

SATURDAY

6.00 - 9.00 Saturday Breakfast – Frenchy (TFN)
9.00 – 12.00 Spirit of the Music - George
12.00 – 2.00 Country Trax - Haydn
2.00 – 4.00 Saturday Mix – Graham
4.00 - 6.00 My Kind of Music – Lesley-Ann

Phone: Studios 9641 2422

Sponsorship: 0408 502 711

E-mail: radio6ycr@hotmail.com

Facebook

Voice of the Avon 101.3 FM – 6YCR
(with live streaming)

Website

voiceoftheavon.org.au

live streaming- Voice of the Avon 101.3 FM

82 hours of local presenters each week
Effective 13 October 2021

Changes may be made without notice

BEVERLEY NETBALL CLUB

FAST5 is back

Starting Wednesday 27th April.

Don't miss out, make sure to get your name in to Jo Copping (0438 972 335)

Beverley will once again be sending a team to play in the Northam senior netball competition.

This year we have also got a junior team entering into the Northam competition.

If you are interested in playing or get involved or just want to find out more

information please contact Jo Copping or Cara Hammond (0400 762 889)



BEVERLEY EASTER MARKETS
AT THE STATION
Saturday 16th April
9am till 2pm

Free Face Painting
Coffee & Ice-Cream
Market Stalls
Plants
Clothing & Accessories
Local Artisans
Skincare
Jewellery
Homewares

MORE STALLS THAN EVER!

www.beverleystationarts.com



Beverley Garden & Tree Society

TREE & GARDEN SOCIETY

The March Garden club meeting was held in the lovely garden at Valery Seeber's home. It was well attended with quite a lavish morning tea to follow. Thank you Val for opening your garden to us. Our annual agenda was discussed with some interesting items included. We will have a Busy Bee in the Dead Finish garden at 8.30am preceding our next meeting which will be at 10.30am at the Dead Finish on Tuesday the 5th of April. New members are welcome.

What a great time to be gardening in April. The days are getting shorter and the nights are much cooler. A perfect time to be planting in the garden.

Vegies to plant in April include – broccoli, cabbage, leek, lettuce, onions, peas, radish, shallots, spinach, spring onion and turnip.

Flowers to plant in April include – alyssum, cornflower, snapdragon, stock, statice, pansy, sweet pea and viola.

April is a great time to attend to the following tasks in the garden:

- Aerate compacted lawns with a garden fork
- Lift and divide bearded iris
- Remove and discard any diseased or rotten fruit that may be hanging in trees
- Rake up and remove leaves regularly as a build up of leaves shades the lawn and eventually kills if left there
- Compost leaves in black plastic bags. After 6 months they should have broken down and be ready to use in your garden
- Be on the lookout for lumpy psyllids on lillypilly leaves. Prune off affected areas, fertilise and water well to encourage fresh growth
- Repot plants that have outgrown their containers. Use fresh potting mix and a slow release fertiliser
- Mass plant ground covers to create a living carpet to suppress weeds. Good native ground covers include native violet and grevillea
- Empty compost bins and use it to condition vegetable and flower beds and spots where you plan to plant bare-rooted trees and shrubs in winter
- Prune hedges of lavender and rosemary
- Plant annuals for winter and spring colour. Try pansy, cineraria, viola, poppy, primula and stock
- Prune summer fruiting trees that have finished cropping. Pruning after harvest reduces the risk of fungal disease and gives the trees a chance to put on some growth before winter
- Trim native shrubs by about a third after they have finished flowering
- Prune any potted plants that are looking tired and lanky by half
- Top up slow release fertilisers in all pot plants to replace nutrients leached out by regular summer watering
- Apply a wetting agent to pots if water runs straight down the side of the pot and the potting mix below the surface stays dry
- This is the perfect time to establish native trees and shrubs such as bottlebrush, wattle and banksia

There is certainly plenty to do to keep you busy in your garden in April!

Beverley Bowling Club News

Pennant News Update

March saw the completion of the 2021-2022 season with mixed results for Beverley Bowling Club.

Ladies Pennants. After winning the Pennant in the previous season, 2021/2022 saw the Ladies finishing in 7th place with 5 wins, 5 losses and a draw. The Ladies are looking forward to a better performance in the 2022-2023 season.

Mens 1st Division: The 1st Division men had by their own standards a bad year, not making the Finals for the first time in many years. They finished 5th with 6 wins and 8 losses. They will look to bounce back into finals contention in the next season

Mens 2nd Division: Mens 2nd Division finished on top of the ladder by 1 point over Goomalling. Beverley Bowls hosted the 2nd Division Finals on the weekend of March 19/20. Beverley played off against Goomalling in the 1st Semi Final and Northam versus York in 2nd Semi Final. Beverley won the 1st Semi Final in a tight contest going through to the Grand Final. Northam defeated York in the 2nd Semi Final and played off against Goomalling on Sunday morning in the Preliminary Final which Goomalling won. Sunday afternoon saw Beverley play Goomalling in the Grand Final. Unfortunately, Beverley could not repeat the performance of 1st Semi Final, and Goomalling ran away to a very comfortable win and the Pennant Flag. 2nd Division men would like to thank the Ladies who played for them throughout the season and the support from our members on the day.

Club News.

February 25 Beverley Bowling club held Elders open day. 36 players competed and the Day was won by Kevin McLean, Reggie Behn and Dale Wansborough. Many thanks to Elders for their continued sponsorship and support for our club, and the ladies in the kitchen. Many thanks.

March 15 Beverley Bowling Club held Invitation Classic Fours.

112 players took part in the day's competition filling both greens to capacity. There were many winners throughout the day. The overall winning team came

from North Beach Bowling Club with a team from Beverley led by Peter Fleay 2nd and a team from York Bowling Club led by Gary Ashworth 3rd. The club thanks the following sponsors for their support. Aglime Australia, Fuel Distributors of WA, RSM, Hutton and Northey Sales, WFI, and Spearwood Wool Handlers. Plus our ladies in the kitchen. Thank you.

Over February and March the club conducted the Hutchinson Championship Singles. The Hutchinson Family have supported this event for over 10 years and the club is grateful for their contribution. The Championship Singles Plate was won by Lew Shaw from Peter Jamieson. Congratulations Lew.

The winner of the final was the first to 25 shots played between Club Captain Daniel Fleay and Steve Minchin. Steve had a good lead early in the game however Daniel settled and mounted a fight back to draw level on 24 shots each. Then a misplaced shot from Daniel knocked Steve's bowl onto the Jack awarding Steve the Championship. Congratulations to both players and well done Steve Minchin Club Champion for 2022.

Upcoming Events

In April the Club will host the Carnival weekend with the Ferndale Farming Company and Beverley Electrical Pairs on Saturday 9th April

Sunday will see the Emfert Fertilisers and Karradale Transport Open Fours.

The Club will hold the Annual General Meeting on Wednesday April 13.



2022 Club Champion Steve Minchin with Hutchinson Family sponsor members Brett and Marylou.

Summer is over but the UV is not

Find Skin Cancer Early

Cancer Council WA is cautioning adults in the Wheatbelt region not to be complacent with sun protection now that summer is over, with many regions in Western Australia still experiencing damaging UV levels of 3 and above.

It is important to understand that UV is different from heat, so not to base your sun protection choices on the temperature, even when it is cooler. For areas north of Perth, UV on winter days will on average exceed 3 at midday, so sun protection is needed year-round in these areas. For areas in Perth and south, the UV will be above 3 throughout autumn, but averaging maximums below 3 in June and July, when sun protection is not needed.

Skin cancers (including melanoma) are the most common cancers affecting both women and men in Western Australia. Data reveals that in 2019, almost 1600 people in WA were diagnosed with melanoma and 214 people died from skin cancer. In 2017, females in WA had a 1 in 30 chance of developing melanoma, while males had a 1 in 21 risk. In the Wheatbelt in 2019, 58 people were diagnosed with melanoma and 5 died from it.

We know people living in regional Western Australia have lower five-year relative melanoma survival, compared with people living in Perth, so we urge anyone in the Wheatbelt experiencing a skin cancer symptom to visit their doctor, clinic nurse or Aboriginal health worker.

Common symptoms of skin cancer include:

- A new spot or mole on your skin
- A spot that is different from other spots on your skin
- Any crusty or non-healing sores
- Any spots, freckles or any moles changing in size (width), thickness (height), colour, or shape over a period of weeks to months.

It is important to know your skin and what is normal for you, particularly if you are over 40 years of age. If you notice any of these symptoms or any other unusual changes tell your doctor, clinic nurse or Aboriginal health worker. It doesn't mean you've got skin cancer – often they turn out to be something less serious. But it is important to get checked. If it is skin cancer, the earlier it is found, the greater the chance of successful treatment.



For more information about skin cancer symptoms, visit www.findcancerearly.com.au

To find out the UV forecast in your area, visit myUV.com.au or download the free SunSmart app, and protect your skin when the UV Index is 3 or above.

For cancer information and support call 13 11 20

Have you had any of these...

... for more than 4 weeks?

Problems peeing

Runny poo

Unexplained weight loss

An unusual pain, lump or swelling anywhere in your body

Becoming more short of breath

A persistent cough

A new or changed spot on your skin

... once or more?

Blood in your poo

Coughing up blood

Blood in your pee

Find Cancer Early

If you have and you are over 40...

Tell your doctor

The earlier cancer is found, the greater the chance of successful treatment.

 Department of Health
  Cancer Council WA

For more information visit www.findcancerearly.com.au or call 13 11 20



Beverley Horse and Pony Club



Who's been out and about

Pony Club WA State Coaching School: On the 12th and 13th February, Tess & Tealah Hawke attended this fantastic school to ensure Beverley HPC was up-to-date with the current policy, procedures and coaching skills to run a successful club. Thank you to the Shire of Beverley for the Community Grant that allowed our club to send two members.



Mortlock Tetrathlon: February 26th & 27th five competitors from Beverley attended this event. Mac Ballantyne placed 3rd in the 80cm and clear Cross Country. Carly Ballantyne placed 4th in the 94cm and clear Cross Country. Ruth Elsegood placed 11th in the 45cm. Emily Maxwell placed 5th in the 80cm and clear Cross Country plus she placed 1st in the 80cm and 1st overall in the 'OffThe Track' category. Jessica Maxwell placed 5th in the 65cm.



Serpentine Tetrathlon: Great weekend on the 5th & 6th of March, with some Persons Bests (PB's). Jessica Maxwell & Eddie place 2nd (up from 5th before the jumping phase) with a clear jump in the 65cm. It was a large class of 11 competitors and only two went clear so she is beyond happy, with a PB for the shoot. Emily Maxwell & Paddy tried the 95cm course. 1st in jump and 2nd overall.



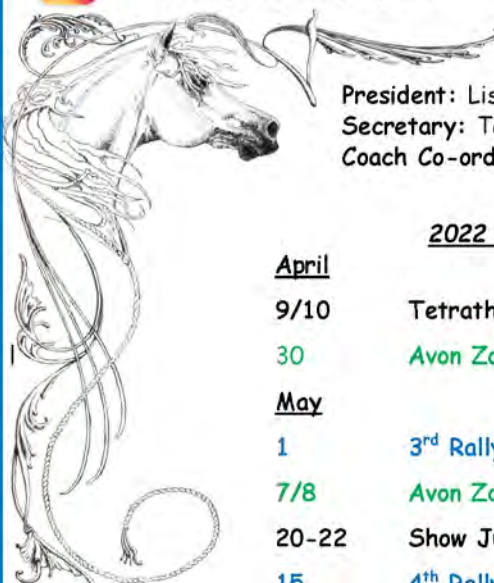
1st Rally: 20th March saw an early start for all our members to beat the heat. Great to see everyone back on the grounds and two new families drop in to see what our club is all about.



Beverley (West Aust) Horse And Pony Club Events



beverleyhorseandponyclub



2022 Committee contacts:

President: Lisa Maxwell	M 0408 902 701
Secretary: Tess Hawke	M 0419 879 310
Coach Co-ordinator: Jessamin Pain	M 044 7722 958

2022 Upcoming dates and events ...

- April**
- 9/10 Tetrathlon State Championships @ Mortlock Pony Club (Goomalling)
- 30 Avon Zone Show Jumping and Dressage Runoffs @ York Pony club
- May**
- 1 3rd Rally @ Beverley Horse and Pony Club
- 7/8 Avon Zone ODE Avon Valley SJPC, Northam
- 20-22 Show Jumping State Championships @ State Equestrian Centre
- 15 4th Rally @ Beverley Horse and Pony Club

Carbon Positive Australia is a not-for-profit organisation that uses donations from individuals and organisations to revegetate degraded land and restore native habitats across Australia.

How do we work with landholders?

Each year, Carbon Positive Australia supports a number of landholders to develop large-scale, mixed native species planting projects on their land.

These projects are funded by donors who wish to offset their carbon footprint by investing in tree planting projects that remove carbon dioxide from the atmosphere.

These funds pay for all project planting and monitoring costs.

Landholders maintain full ownership of the land, however must sign a Landholder Agreement so that our donors know that the trees they have funded have permanence.

Why plant your land?

The benefits of revegetating rural land can include:

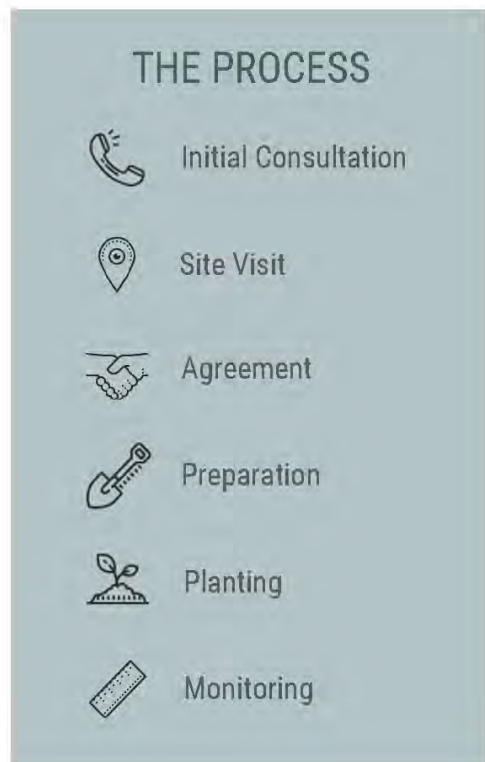
- reducing salinity and waterlogging
- improving soil quality and reducing erosion
- providing a natural wind break to protect crops and livestock
- restoring habitat for native flora and fauna
- providing shade and shelter for livestock
- increasing the ecological and financial value of the land

Is your land suitable?

- planting area greater than 20 hectares (however, this can be total area over adjoining properties if neighbouring landholders would like to participate)
- cleared prior to 1990
- annual rainfall 200mm+



“
There was great flexibility in the process, and when I see what we've created together, I think it's been a great success.
- Wolfie, Landholder
”



For further information, please contact us at planting@carbonpositiveaustralia.org.au or on 1300 857 970.
<http://www.carbonpositiveaustralia.org.au>

OUR RESPONSIBILITIES

- select suitable species
- acquire seeds and seedlings
- prepare and plant the site
- register the site with the Emissions Reduction Fund (if applicable) and administer the carbon covenant*
- fund the whole cost of site preparation and planting
- monitor survival and growth rates

YOUR RESPONSIBILITIES

- maintain fences and firebreaks
- take reasonable steps to manage pests
- allow our site managers reasonable access
- sign a Landholder Agreement signifying your commitment to protect the trees (minimum 25 years)



FAQs

What happens once the trees are planted?

We let nature take its course! Over the first three years, we will need occasional access to the site to monitor growth. If survival rates are low at first monitoring, we will assess whether to restock the area.

Can livestock be grazed on the planting area?

After three years, sheep are allowed for light grazing; provided there is no damage to the trees/shrubs.

Can I visit existing Carbon Positive Australia planting sites?

Yes. Many of our landholders are happy to let other prospective carbon project owners visit their land and see what has been achieved. If you would like to visit a site, please contact us and we will arrange a visit to a site near you.

Why do I need to sign a Landholder Agreement?

A Landholder Agreement must be in place for us to register a Carbon Covenant and a Carbon Right over the planted area(s). The Carbon Covenant protects the planted area, ensuring the "permanence" of the project for a period of either 25 or 100 years. The Carbon Right assigns all carbon sequestered to Carbon Positive Australia.

Find answers to other FAQ's at www.carbonpositiveaustralia.org.au/FAQs

Carbon Positive Australia acknowledges the Australian Aboriginal and Torres Strait Islander peoples as the first inhabitants of the nation and the traditional custodians of the lands where we live, learn and work. We pay our respects to elders past, present and emerging.

LOCAL CLUB/GROUP CONTACTS



Group/Club/Association	Contact	
Adult Horse Riders Social Group	Marie Hammond	0447 121 014
Anglican Parish of Beverley-Brookton	Priest: Philip Raymont	0419 177 178
Beverley & Districts Motorcycle Club	Anthony Fiaschi	0419 993 232
	Greg Offer	0428 120 003
Beverley Agricultural Society	President: Mick Martin	0408 950 043
	Secretary: Sue Martin	0427 771 054
Beverley Amateur Dramatics (BAD Drama Club)	Committee Contact: Britt Hadlow	0447 811 267
Beverley Amateur Swimming Club	President: Amanda Farr	0407 389 642
	Secretary: Rebecca Burglass	0422 433 434
Beverley Badminton Club	Captain: Cara Hammond	0400 762 889
Beverley Bowling & Croquet Club	President: Jeff Murray	
	Ladies Capitan: Lyn MacTaggart	0439 461 634
	Mens Capitan: Daniel Fleay	0458 088 674
Beverley Community Garden	Betty Lobb	0400 569 971
	Dorothy Sampson	0429 989 031
Beverley CWA	President: Pat Hambly	9646 1481
	Secretary: Sam Mearns	0447 160 076
Beverley DHS P&C	President: Bruce Kilpatrick	0428 464 006
Beverley Football & Netball Club	President: Robbie Wansborough	0428 843 251
	Secretary: Blake O'Meagher	0499 166 160
	Committee Contact: Jayde Creedon	
	League Coach: Kodie Fleay	0418 929 141
	Reserves Coach: James Adams	0429 461 000
Beverley Garden & Tree Society	President: Lyn Murphy	0418 282 674
	Secretary: Dorothy Sampson	0429 989 031
Beverley Golf Club	President: Darryl Hagan	
	Mens Capitan: Marc Edwards	
	Ladies Capitan: Jane Murray	
Beverley Historical Society	President: Joy Smith	0427 411 881
	Secretary: Morag Whitney	9646 1075
Beverley Horse & Pony Club	President: Lisa Maxwell	0408 902 701
	Secretary: Tess Hawke	0419 879 310
Beverley Hospital Auxiliary Inc./OP Shop	President: Glenys Lane	0437 807 454
Beverley Junior Sports	President: Mark Bickley	0459 655 027
	Secretary: Jo Copping	0438 972 335
	Football Coordinator: Brett Shaw	0427 481 028
	Netball Coordinator: Sharlee Higgins	0426 881 080
	Cricket Coordinator: Brad Copping	0400 383 664
	Hockey Coordinator: Kelly Mann	0428 779 234
Beverley Lawn Tennis Club	President: Chantelle Meade	0429 418 576
	Secretary: Rebecca Smith	0428 805 681
Beverley Men's Shed	President: Harvey Morrell	0427 235 681
	Secretary: David Winkle	0429 873 474
Beverley Naturalists Club	Phyllis Facey	9646 1469

Beverley Netball Club	President: Nat Ashworth	
	Secretary: Laura O'Meagher	0417 973 731
Beverley Off Road Motor Sports Assoc	Cheryl Simson	0409 205 551
Beverley Patchwork & Quilters	Jan Sherwood	0438 019 510
Beverley Playgroup	President: Kelly Aaron	0400 772 081
	Secretary: Melissa Blechynden	0429 504 963
Beverley Redbacks Hockey Club	Secretary: Britt Hadlow	0447 811 267
Beverley Soaring Society Gliding Club	President: Geoff Overheu	0407 575 216
	Secretary: Piero Velletri	0417 045 437
Beverley Station Arts	President: Jenny Broun	0419 040 063
	Secretary: Sarah Miller	0427 464 078
Beverley Toy Library	President: Kelly Mann	0428 779 234
	Secretary: Skye Carlhausen	0438 353 634
Clay Target Club	Secretary: H Henderson	0407 457 427
Cricket Club	President: Stephen Gollan	9646 1200
	Coach: James Adams	0429 461 000
Cropping Committee	Secretary: Stephen Gollan	9646 1200
Dale Community Group	President/Treasurer: Yvonne Hobbs	0438 370 755
Dale River Sports Ground Committee	Secretary: Georgina Beecroft	9647 1089
Friends of the Dale River	Linley Thompson	0429 953 800
	Lisa Blanch	9646 1716
Novus Agri	President: Kelly Mann	0428 779 234
	Secretary: Skye Carlhausen	0438 353 634
Rifle Club		9641 6061
Royal Antediluvian Order of Buffaloes		0419 945 240
Southern Avon Ladies Darts	Monica Camenzuli	0474 105 242
St John Ambulance	Chairperson: Robyn Murray	
	Sub Centre	9646 0646
Top of the Avon Line Dancers	Jan Turrell	0429 952 177



BEVERLEY
Community Markets

SATURDAY 02 April | 2022
8am until 1pm

The Old School building
between PO & Shire building

Gift ideas, fresh produce, crafts,
baked goods and preserves,
woodwork plus sausage sizzle.

For more information, contact Val Tylor 0428 601 416

Proceeds go to the Beverley Junior Sports



**Located behind the Beverley Medical
Practice Cullen House
106 Forrest Street Beverley**

**Open Wed & Fri Only
8 am – 1pm**

All enquiries to the Phlebotomist -
Phone: 9646 0724

*Please note that Western Diagnostic
Pathology will accept all pathology
collection forms.*

2022 UPCOMING EVENTS



APR
SAT 2ND

2022 SEASON STARTS
AVON ASSOCIATION - ROUND 1
REDBACKS VS QUAIRADING
QUAIRADING TOWN OVAL

•RESERVES 12:15PM• NETBALL 12:30PM • LEAGUE 2:15PM•



AVON FOOTBALL ASSOCIATION 2022 FIXTURES

ROUND 1: Sunday 3rd April
Keller/Tammin v Cunderdin (Sat. 2nd)
Quairading v Beverley (Sat. 2nd)
Railways v York
Federal - Bye

ROUND 2: Sunday 10th April
Beverley v Federal
Cunderdin v Quairading
York v Keller/Tammin
Railways - Bye

ROUND 3: Sunday 24th April
Keller/Tammin v Beverley (Sat. 23rd)
Federal v Railways (Sat. 23rd)
Cunderdin v York
Quairading - Bye

ROUND 4: Sunday 1st May
Beverley v Quairading (Sat. 30th)
Cunderdin v Federal
Railways, York, Keller/Tammin - Bye

ROUND 5: Sunday 8th May
Sponsored by Boekeman Machinery
York v Beverley
Quairading v Railways
Federal v Keller/Tammin
Cunderdin - Bye

ROUND 6: Sunday 15th May
Beverley v Cunderdin (Sat. 14th)
Railways v Keller/Tammin
Quairading v Federal
York - Bye

ROUND 7: Sunday 22nd May
BELT UP Round
Keller/Tammin v Quairading (Sat. 21st)
Cunderdin v Railways
Federal v York
Beverley - Bye

ROUND 8: Sunday 29th May
Railways v Beverley (Sat. 28th)
Quairading v York
Keller/Tammin v Cunderdin
Federals - Bye

ROUND 9: Sunday 5th June
York v Railways
Federal v Cunderdin
Keller/Tammin Quairading
& Beverley - Bye

ROUND 10: Sunday 12th June
Talk to a Mate Round
Beverley v York (Sat. 11th)
Railways v Quairading
Keller/Tammin v Federal
Cunderdin - Bye

Colts Carnival Weekend:
18th June in Northam

ROUND 11: Sunday 26th June
Sponsored by Avon Valley Motor Group
Cunderdin v Beverley (Sat. 25th)
Keller/Tammin v Railways
Federal v Quairading
York - Bye

ROUND 12: Sunday 3rd July
NAIDOC Round
Beverley v Keller/Tammin (Sat. 2nd)
Railways v Federal (Sat. 2nd)
York v Cunderdin
Quairading - Bye

Nutrien Champs 8th 9th & 10th July
Colts 7th, 8th & 10th July

ROUND 13: Sunday 17th July
Federal v Beverley
Quairading v Cunderdin
Keller/Tammin v York
Railways - Bye

ROUND 14: Sunday 24th July
Think Mental Health Round
Railways v Cunderdin (Sat. 23rd)
Quairading v Keller/Tammin (Sat. 23rd)
York v Federal
Beverley - Bye

Round 15: Sunday 31st July
Beverley v Railways (Sat. 30th)
York v Quairading
Cunderdin v Keller/Tammin
Federals - Bye

ROUND 16: Sunday 7th August
Sponsored by Demeter Grains
Beverley v Quairading (Sat. 6th)
Railways v York
Cunderdin v Federal
Keller/Tammin - Bye

ROUND 17: Sunday 14th August
York v Beverley (Sat. 13th)
Quairading v Railways
Federal v Keller/Tammin
Cunderdin - Bye

1st Semi Final
Sunday 21st August in Tammin

2nd Semi Final
Sunday 28th August in York

AFA Medal Count
Friday 2nd September

Preliminary Final
Sunday 4th September in Quairading

Grand Final
Sponsored by Croplands and Westcoast Livestock
Sunday 11th September in Beverley

Bob's FISH NIGHT

FRIDAY
8TH APRIL 2022
•6PM•BEVERLEY AMENITIES BUILDING•

Come & be a part of our great club

ALL NEW, PAST & PRESENT
PLAYERS, COMMUNITY
MEMBERS & SUPPORTERS
WELCOMED

FOLLOW US ON FACEBOOK & INSTAGRAM FOR ALL THINGS REDBACKS

APRIL 2022

SUNDAY	MONDAY	TUESDAY	WEDNESDAY	THURSDAY	FRIDAY	SATURDAY
					1 Op Shop Recycle Bin	2 Community Markets Op Shop Football in Quairading BSA String Quartet
3 Social Tennis 2pm Mass – 8.00am Sacred Heart Church Clay Target Club	4 CRC Garden Workshop CWA Morning Tea	5 Mens Shed Quilting Stay Active	6 Golf Scroungers Active Farmers Croquet Badminton	7 Storytime & Toy Library	8 Golf Scroungers Croquet Adoration and Mass – 2.30pm Sacred Heart Church	9 SAMBA
10 Mass – 8.00am Sacred Heart Church Football in Beverley	11 Weight Watchers Yarns & Yarns Bridge	12 Mens Shed Quilting Stay Active	13 Golf Scroungers Active Farmers Croquet Badminton CWA Meeting	14	15 Recycle Bin Golf Scroungers Croquet GOOD FRIDAY PUBLIC HOLIDAY	16 SAMBA Op Shop Easter Markets
17 EASTER SUNDAY PUBLIC HOLIDAY	18 EASTER MONDAY PUBLIC HOLIDAY	19 Mens Shed Stay Active CRC Bushtucker Information Session Quilting COUNCIL MEETING	20 Golf Scroungers Active Farmers Croquet Badminton CWA Meeting	21	22 Golf Scroungers Croquet Op Shop BLARNEY DEADLINE CRC Make Up Workshop	23 SAMBA
24 Mass – 8.00am Sacred Heart Church Football in Tammin	25 ANZAC DAY PUBLIC HOLIDAY	26 Mens Shed Quilting Stay Active	27 Golf Scroungers Active Farmers Croquet Badminton Fast 5 Netball	28 Playgroup	29 Bingo at CRC Op Shop	30