



# BEVERLEY BLARNEY

Edition 382  
August 2016  
No Charge



SAFE ROAD TO BEVERLEY



## BEVERLEY SHOW SATURDAY 20 AUGUST

BEVERLEY SHOWGROUNDS, FORREST STREET, GATES OPEN AT 9AM

### LIVE DEMONSTRATIONS

Wood Chopping, Equestrian Events, Motocross, Sheep Dog Demonstrations, and TransafeWA Safety Truck sponsored by the RAC



### COUNTRY SHOW FAVOURITES

Local Exhibition Shed, Cattle, Poultry, Sheep, The Horses vs Humans Race, East vs West Tug-o-War



### PLUS...

Dodgem Cars, Big Rides, Little Rides, GymBus, Side Show Alley, Old MacDonald's Farm, Face Painters and new to the show 'The Grain Trail'

### PERFORMANCES BY

Beverley School Choir and Station Singers

### FIREWORKS, LIVE MUSIC AND MOVIES FOR THE KIDS AT NIGHT



### SHOW ENTRY PRICES

Adults - \$13, Pensioners - \$6  
Carers - \$6 (must present a Companion Card)  
Children 4-15 years - \$6,  
Children under 4 - free

Our Safe Road to Beverley comprises of the following:

- Live crash demo by local emergency services,
- Elephant in the Wheatbelt,
- Free water for patrons in the bar area and
- Attendance of our local police at the show.



*'Country at its Best'*

Exhibition Shed sponsored by

Grain Trial sponsored by

**H. RUSHTON & Co.**



Fireworks sponsored by

BEVERLEY  
**HYDRABOOM**





## President Report - August 2016

### 2016/2017 Annual Budget

At the July Ordinary Council meeting Council adopted the 2016/2017 Annual Budget which incorporated an overall rate rise of 3%. The percentage increase on individual rate notices may vary depending on changes in UV and GRV valuations which are affected by a number of factors, including revaluations by the Valuer General (Landgate). Payments received in full by the due date, Monday 12 September 2016, are eligible for a 10% discount. The Annual Budget will be available for viewing on the Shire website or from the Shire office.

### Avondale

Recent discussions between Shire and National Trust WA representatives regarding the progress and future of Avondale were favourable. The Trust view Avondale as a priority place and new CEO Julian Donaldson, with assistance from the Shire, has proposed community engagement to determine community aims and aspirations for the property.

Whilst progress at Avondale appears slow, it has not stopped. The Avondale Farm Project Association (AFPA) and Avondale Warden have been vital to ensuring the property is available to the public, albeit on a restricted basis, and provide a valuable support base for various projects and initiatives.

The 2011 Avondale Masterplan is considered a relevant document, excerpts of which are included in this Blarney. A community workshop is proposed for later in the year.

Co-ordination of well-informed plans, projects and programmes with secured funding and community buy-in is essential to progress and retain this historic and iconic place within the Wheatbelt. Please review the information on page 32 - 35.

### Scitech School Holiday Visit

The Shire sponsored a visit from Scitech during the recent school holidays that provided interactive and hands-on workshops for approximately 40 participants aged 4 – 14 years. It was fun and educational with lots of enthusiasm from the inquisitive participants.

### Illegal Rubbish Dumping

Mid-week during July household rubbish, including dirty nappies, glass and plastics, was illegally dumped along Nicholas Street (rubbish dump road) near the sewage pond fence. The mess created was quite disgusting and the cleanup extensive due to dispersal by birds and animals. This is a direct cost to rate payers, both for the clean-up and for the ranger services to follow up on the correspondence found in the mess. Littering is a serious offence. Please contact the Shire office with information and/or evidence of illegal dumping of rubbish in the Shire. For those who have forgotten, refuse site hours are Saturday and Sunday 8am - 4pm, Monday 8am – 3pm. Note new earlier closing on Monday.

### Motorcycle Friendly Region

Avon Tourism (Inc) has secured funding to brand and market the Avon Valley as a Motorcycle Friendly Region. The Shire is a member of Avon Tourism and looks forward to the project roll out.

### Christian Porter MP - Funding for Beverley Amateur Swimming Club

Christian Porter MP recently made a visit to Beverley meeting with Shire and Community representatives to announce that the Beverley Amateur Swimming Club were recipients of a community grant for some upgrades which include lane rope winders, equipment storage, kitchen improvements and trophy display. As a matter of interest the Beverley Amateur Swimming Club was formed in 1962 *"to encourage competitive swimming and to foster and teach non-swimmers (especially children) on Sunday mornings"*. *Beverley Times Friday 26 October 1962*. Congratulations to the Beverley Swimming Club!

### Beverley Show – Saturday 20 August 2016

Although the Shire won't have a stand at this year's show we look forward to seeing you there!

Dee Ridgway  
Shire President



### AGED FRIENDLY COMMUNITY PLANNING

The Shire is conducting an informal consultation through your community groups, to understand the specific requirements you may have for "aging in place".

Please take the time to welcome Pam Stockley (working on the Shire's behalf) to your group meetings. She would enjoy engaging in casual conversation and hearing your comments.

For further information please contact the Community Development Officer at the Shire.



### COMMUNITY GRANTS REMINDER

Submissions for the July round of Community Grants are due on 02 August 2016. For further information please contact the CDO at the Shire offices.



# SWIMMING POOL GRANT



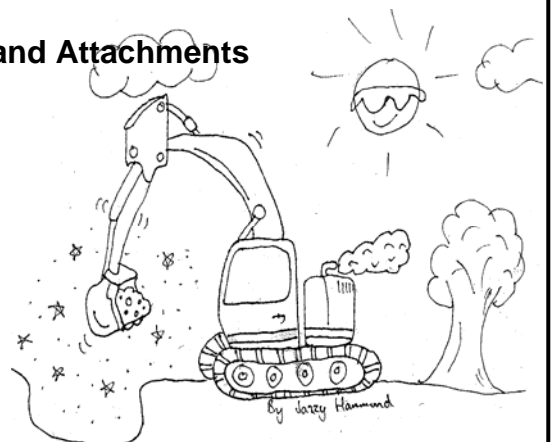
*Photo: Members of the community on hand at the Beverley Swimming Pool to receive the news that a re-elected Turnbull Coalition Government will invest \$23,000 in the refurbishment of the Beverley Swimming Pool club rooms.*



# HAMMOND FENCING

Now offering the following services

- 12t Excavator
- 30t + Excavators and Attachments
- Rock Breaker
- Grader
- Trenching
- Bobcat and Truck
- Road Building
- Site Clearing
- House Pads
- Postholes



EXPERIENCED & RELIABLE OPERATOR. COMPETITIVE RATES

**Phone Jamie Hammond  
0427 866 488**

# BEVERLEY'S TRADING POST

## **Caravan 2002 Jayco popup \$19,000**

Shower/toilet, 2 single beds, 2 way fridge/freezer, microwave, a/c, gas cooker/oven, awning P 0447 990 850

## **FOR SALE**

Pea Straw for your gardens  
\$10 per bale  
0414 731 338

## **3.8m Stacer dinghy \$2000 ono**

20hp Evinrude motor, oars, boat cover, life jackets, fuel tank, fold down seats, heavy duty trailer + spare wheel.  
Licensed July '17. Ph 0427 404 064

# FOR SALE

**New Blarney Section  
Buy, Sell or Swap Goods  
\$3 for 120 characters**



# AVONDALE DISCOVERY FARM

A historic working farm in the Avon Valley

*Open days in 2016 - 10am - 4pm*

## **MARCH**

Easter Long Weekend  
25, 26, 27 and 28  
Good Friday 12 noon to 4.00pm  
All other days 10.00am - 4.00pm

## **APRIL**

Saturday 16 and Sunday 17  
ANZAC Day Long Weekend  
23, 24 and 25

## **MAY**

Saturday 21 and Sunday 22

## **JUNE**

Saturday 4, Sunday 5 & Monday 6  
WA Day Long Weekend 18 and 19

## **JULY**

Saturday 16 and Sunday 17

## **AUGUST**

Saturday 20 and Sunday 21  
Visit us at our Beverley Show stand

## **SEPTEMBER**

Saturday 17 and Sunday 18  
Queen's Birthday Long Weekend  
Saturday 24, Sunday 25 and Monday 26

## **OCTOBER**

Saturday 15 and Sunday 16

## **NOVEMBER**

Saturday 19 and Sunday 20  
Weather permitting

## **DECEMBER**

Closed

Avondale is also open by appointment. Please call the farm mobile or email to make your booking.

550 Waterhatch Road, Beverley WA 6304

P: 9646 1107 | M: 0427 477 734 | E: Avondale@ntwa.com.au

*Happy 21st Birthday  
Kari Lee Moulton*



*Love from all of your  
family and friends xoxo*

Sunday 14 August

# FOR SALE

**2010 Volvo XC60 D5 Auto AWD**  
(Bought new in early 2011)



2.5L Twin Turbo Diesel, Electric Tailgate, Towbar, Nudge Bar, City Safe Automatic Braking, Spotlights, Two Way, Roof Racks, Kids Booster Seats Built in.

ONE OWNER, full service history done by Volvo Cannington (service schedule as per Volvo recommendation every 15,000km). 182,000km.

**Price - \$15,400**

(buyer to pay stamp duty and transfer fee).

Please call me  
Charmaine on 0427 444 407  
or email [charmaine.willing@wfi.com.au](mailto:charmaine.willing@wfi.com.au)

## TV Antennas

**UHF CB sales, service  
and installation**

**TV reception problem  
solving and installation  
of new systems**

Qualified communications technician  
Reasonable labour charges  
Onsite service  
Based locally in Beverley

**Regional Antennas Plus**

**ALAN PRIMROSE**

**0408 002 965**

## TAX RETURNS

**FORTIZ BUSINESS SOLUTIONS**  
(formerly M.E (Mel) VIVIAN)

Registered Tax Agent

Public Accountant

Business Consulting

OFFICE HOURS:

FRIDAY 9.00 A.M – 4.30 P.M

101 VINCENT ST (Bankhouse)

BEVERLEY

Please phone for an appointment

**9646 0282**

**ChemDry®**  
*Drier. Cleaner. Healthier.™*  
**Betta Finish**



Superior carpet  
& upholstery  
cleaning

**Freecall 1800 017087**

[bettafinish@wn.com.au](mailto:bettafinish@wn.com.au)

Fax 08 96225473

## Beverley Junior Netball Team

### Undefeated Winners of the 2016 Ferguson Shield

The Beverley Junior Netball Team were rewarded for their grand efforts on Sunday 24 July in Quaraiding. The year 5 and under team played a five game round robin contest against Cunderdin, Quaraiding, Kellerberrin/Tammin. The girls were undefeated in all of their matches. On the day Zoe Shaw proudly received the Fairest and Best trophy for Beverley and Sophie Kilpatrick received the Coach Award, as well as the team bringing home the Ferguson Shield for 2016. Congratulations to all of the players, coaches and thank you to the parents that travelled on the day.



The girls next big event will be in Northam for the West Coast Fever Carnival and we wish them all the best of luck at this event.

Back row: Coach- Samantha Fricker. Middle row (left to right): Darylyn Ugle, Charlee Fricker, Ella Cooke, Sophie Kilpatrick, Hannah Morrell. Front row (left to right): Jamie-Lee Speedy, Grace McLean and Zoe Shaw.

**scitech**



Thanks to the Shire of Beverley, just over 40 children enjoyed a fun filled day of science based activities



Local Government Act 1995

Local Government (Financial Management) Regulations 1996

**Notice pursuant to Schedule 6.3 of the Local Government Act 1995 requiring payment of outstanding rates or service charges**

TO: <sup>(1)</sup> MANUKA TIPENE BILICH OF:

- (i) 123 Great Eastern Highway, South Guilford, WA 6055;
- (ii) Lot 39, Great Southern Highway, Kokeby, WA 6304; and
- (iii) 23 Tamingi Street, Ruakaka, Whangarei 1111, New Zealand.

Notice is hereby given that the sum of \$ <sup>(2)</sup> 14,250.14 has been owing to the <sup>(3)</sup> Shire/~~Town/City~~ of <sup>(4)</sup> BEVERLEY for a period of 3 years for <sup>(3)</sup> rates/service charges in respect of the land described below and unless payment is made of the sum of \$ <sup>(2)</sup> 14,250.14 within 3 months from the date of this notice the local government will, pursuant to section 6.64 of the Local Government Act 1995, offer the land for sale by public auction at a time and place appointed by the local government.

Signed for and on behalf of the <sup>(3)</sup> Shire/~~Town/City~~ of <sup>(4)</sup> BEVERLEY this <sup>(5)</sup> Seventh day of July, 2016.

.....  
  
 CEO

Description of Land etc.

Names of owners and all other persons appearing to have an estate or interest in the land	Description of land referred to, including title references
<sup>(6)</sup> OWNER – MANUKA TIPENE BILICH of 123 Great Eastern Highway, South Guilford	<sup>(6)</sup> 1. LOT 39 ON PLAN 2874 VOLUME 2039 FOLIO 483. 2. REGISTER NUMBER: 39/P2874. 3. SKETCH OF LAND: 2039-483 (39/P2874) 4. PREVIOUS TITLE: 1471-304 5. PROPERTY STREET ADDRESS: Lot 39, Great Southern Highway, Kokeby, WA 6304 6. LOCAL GOVERNMENT AREA: SHIRE OF BEVERLEY.

**DJ YATES**

Authentic Heritage Restoration

BRICK AND STONEMASONRY RESTORATION  
 AUTHENTIC REPOINTING OR MORTAR RISING  
 DAMP RECTIFIED  
 PROPERTY MAINTENANCE

PHONE DAVE 0419 041 542



HAPPY BIRTHDAY  
 SHERIDAN IRVINE  
 Best wishes for the  
 13 August 2016  
 From all of your  
 work colleagues

**Australian Government  
Mobile Service Centre**



centrelink

medicare

child support

The Australian Government Mobile Service Centre is supporting rural communities by providing convenient access to Australian Government payments and services. This specialised vehicle offers a wide range of face to face and self service assistance for rural families, older Australians, students, job seekers, people with disability, carers, farmers and self-employed people.

You can visit the Mobile Service Centre:

Opposite IGA, Vincent Street

BEVERLEY

Monday, 15 August 2016 9.30 am to 4 pm

Experienced staff travel with the Mobile Service Centre and provide friendly, face-to-face service, information and support. On this trip, the Australian Taxation Office will be available to assist with advice and information about tax and superannuation. If the assistance you're after is not available, arrangements will be made for someone from the relevant organisation to contact you.

For more information, go to [humanservices.gov.au](http://humanservices.gov.au) and search for Mobile Service Centre or call 132 316.

SE159B.1505



**Australian Government**  
Department of Human Services

## Kindy Enrolments for 2017

Kindergarten students who are eligible to enrol for 2017 will have birth dates between 01/07/2012 and 30/06/2013.



### How can I get an enrolment form?

- Collect forms from the school office during the hours of 8.30am - 3.15pm.
- Email us for a copy of the form: [beverleydhs@education.wa.edu.au](mailto:beverleydhs@education.wa.edu.au)
- Phone us directly: 9646 1165

Completed forms and relevant documents are to be returned to the school office by Friday 12 August 2016.

For further information 9646 1165.



## Invitation



### Department of Human Services Digi Event

Hosted by Beverley CRC  
Event contact - Amor Moulton

Date Friday 12 August 2016  
Time 12.00pm onwards

Location Beverley CRC  
132 Vincent Street  
BEVERLEY

RSVP COB Wednesday 10 August 2016  
Email [beverley@crc.net.au](mailto:beverley@crc.net.au)

Bring along a portable device to get hands on experience following the demonstrations.  
WiFi available

Most Centrelink, Medicare and Child Support business can be conducted using self service. There are options using mobile apps, online services or phone self service. Let us explain how easy and convenient these options are to use.

Information on the following topics will be covered:  
- myGov



humanservices

# PARSONS BROS SHEARING SERVICE



Servicing - PINGELLY, BROOKTON, WANDERING  
and surrounding districts

PHONE: Luke 0428 300 001

Mark 0428 308 460

All enquiries welcome and confidential

## THANK YOU

The family of the late Fred Capper (Snr) would like to thank all who sent kind messages, cards, phone calls and attended his funeral service in Mandurah.

Your support and kind words in our time of grief was very much appreciated.



Bev, Craig, Glenn, Ashe and families would sincerely like to thank the wonderful Beverley community for your support on the recent passing of Bob Hall.

Your phone calls, visits, cards and funeral attendance was very much appreciated.

Our gratitude also goes to the Beverley Lawn Tennis Club for your kind assistance. You did Bob proud. We have special memories to cherish.



## COMMUNITY NOTICES

### Results of 2016 Anglicare Knit-In

On 06 July 2016 at the St. Mary's Church Hall at 9.30am. 11 knitters in attendance.

5 non-attending contributors, known to me, there were probably more.

Items brought in:

Scarves - 24

Beanies - 47

Rugs - 18

4 rugs - assembled from donated squares.

Thanking you

Lesley Heal



### Can You Help?

Do you know the whereabouts of Maria Lyons or her daughter Estelle?

(Richard Lyon used to be the APB officer in Beverley).

Maria's friend Leean (Wilkinson) Pobke has lost touch and would love to have news from her.

Thank you.

If you can help, please contact Leean on phone: 9047 7057 or email: [andrew.pobke@bigpond.com](mailto:andrew.pobke@bigpond.com)

## CONGRATULATIONS

Beverley Redbacks Football player, Kyle Ugle has always been an outstanding athlete and at the age of 17 years old he has a vast array of medal and awards to show for his amazing skills and natural talent in the football realm.

Recently he has extended his sporting abilities to include Gaelic Football. After being a pivotal competitor in a match between Girrawheen SHS vs John XXIII, Kyle has been named in the squad for the State School Boys Gaelic Football Team.

We wish him all the best in his latest endeavour.



### BLOCK MAINTENANCE

Do you need your fire breaks maintained, block mowed or ploughed?

If so please contact Tom 0419 945 240 or Jenny 0427 686 020.

**Wanted**-People wanting to lose 5-35kg 30 day money back guarantee. Full support & coaching. For a free wellness evaluation call/text Bernadette 0448 642 772, [bernadette.bayer@hotmail.com](mailto:bernadette.bayer@hotmail.com)



### Farewell to a Dear Friend

*It is with heavy hearts that the Beverley Lawn Tennis Club bid "Farewell" to our friend and Life Member, Bob Hall. Members of the Club were honored to join Bev and Bob's family to lay him to rest in July. Bob was synonymous with the Tennis Club and he will certainly never be forgotten. Every time we put up the "Two Bob Arena" at Easter, collect the cups to wash in the sink, make sure the nets are correctly set, the clubhouse is spic and span or need somebody to fill in at short notice we will always be reminded of Bob. He did all these things and many more willingly, without complaint and always with a smile and a kind word. Thank You Bob, we will miss you dearly.*



**Bob Hall**

28.05.1940 – 02.07.2016

Beverley Lawn Tennis Club - Life Member



## Outstanding achievements of Angela Stanfield.



Beverley local Angela Stanfield is the daughter of Cobb and Stacy from Avon Express. She is the eldest of five children and is currently an apprentice chef at Crown Perth. She is now in her 3<sup>rd</sup> year and she has only 6 months to go to complete her training.

The busy 20 year old has been nominated as Apprentice Chef of the Year 2016. In May she won the: **Crown F&B Stars** with this she had to go to Melbourne Crown for a week and present her dishes to 100 VIP's and Crown Executives.

In June she came runner up in the **Culpeper's** competition. They supply all the herbs and spices to many of the top restaurants' in Australia.



In early July, Angela won the: **Nestlé Golden Chef Hat Award**. This had 60 competitors from Western Australia's top restaurants and hotels. The winners from each state now fly to Melbourne for the National Title. It is a huge event hosted by Nestle with over 5,000 people viewing the chef's in action.

Later this year in October Angela has been selected by the **Australian Culinary Federation** to represent Australia at the **Culinary Olympics in Germany** and is one of only seven in the **Australian Culinary Youth Team**.

The team have been training for nearly 12 months together in their own time and once a month they host an event to fundraise.

Although it is an official Olympic event, being this is the 2016 Olympic Year, it is not funded by the Australian Government to send our team there like so many of the sporting events. For the 3 weeks the team will be in Germany it will cost each of them \$12,000. They have all worked very hard and are an amazing team.

During the 3 weeks in Germany the team have nominated into many categories both individual and as a group. They all have strong sound skills to compliment each other so I wish them all the best.

Angela was chosen to represent Australia because of a butter sculpture of an Angel she made last year for an International Competition hosted by the Australian Culinary Federation. It was exhibited among over 200 pieces in her category from all over the world at the Exhibition Centre in Perth.

The sculpture of the angel (pictured on far right) was only 3 points distinction. Angela won a gold medal for this event.

Good Luck Angela.



## Good Luck Jessica Fleay

The Beverley Agricultural Society and Beverley Community wish you all the best at the Royal Agricultural Show. The judging day for the 2016 Rural Ambassador finals that will be on Saturday 20 August 2016.

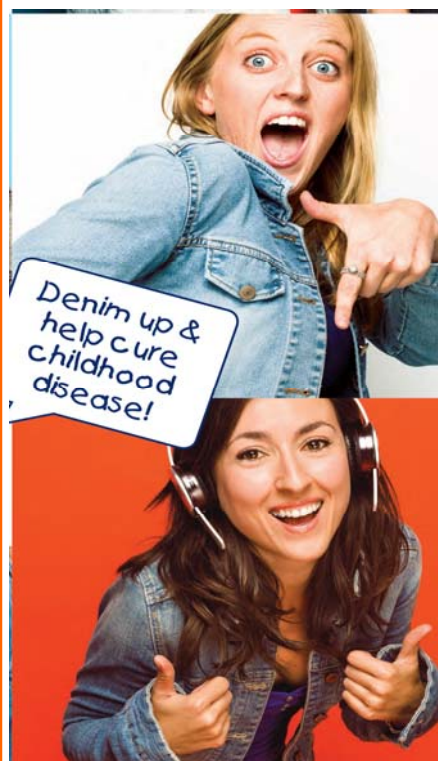


### Jeans for Genes Day

Friday 05 August 2016

Merchandise and donation tins available at the CRC.

Please get on board and wear denim on the 5th August and **DONATE NOW!!!**



# NOMINATIONS OPEN



Government of Western Australia  
Department of Local Government and Communities

## WA VOLUNTEER SERVICE AWARDS

### Recognising 25 years of service

The Department of Local Government and Communities helps to acknowledge the significant efforts of Western Australia's volunteers through the WA Volunteer Service Award program.

The program recognises West Australian volunteers who have provided more than 25 years and 50 years of service to one organisation. Nominees receive a commemorative badge and a personalised certificate. Nominations for the program are ongoing and can be submitted at any time throughout the year. Official presentations are held regularly by the Minister for Seniors and Volunteering. Alternatively, arrangements can be made to have the award presented at another time to volunteers by the nominating organisation.

Further information regarding the awards program can be found on the Departments website

<https://www.dlgc.wa.gov.au/CommunityInitiatives/Pages/Volunteer-Service-Awards.aspx>

**The next ceremony to be held will be for volunteers of 25 to 49 years' of service and will take place on the morning of the 28<sup>th</sup> September in central Perth.**

Further ceremonies are likely to be held in early December (50+ years) and May 2017 (25 to 49 years).

Those volunteers nominating to have their award presented by the Minister at a ceremony will be invited to the next ceremony being held. For those volunteers choosing to have their award presented to them by their nominating organisation, DLGC will send the appropriate award to the organisation following the ceremony. **Nominations can still be submitted at any time during the year.**

Please use the [online nomination form](#) to nominate your volunteers wherever possible. If you are nominating more than four volunteers please get in contact and we can forward a document to you for submission.

While volunteers can be nominated at any time throughout the year, if they would like to attend the September ceremony, or receive their award from their organisation before May 2017, **nominations must be received by/on Thursday the 31<sup>st</sup> of August 2016.**

If you have any questions about this process or need assistance with the online form, please don't hesitate to contact me on the details below.

Jo Booker  
Strategy Officer  
Strategy, Research and Initiatives  
Department of Local Government and Communities  
Tel: +61 8 6551 8320  
Fax: +61 8 6552 1555  
Email: [jo.booker@dlgc.wa.gov.au](mailto:jo.booker@dlgc.wa.gov.au)  
Web: [www.dlgc.wa.gov.au](http://www.dlgc.wa.gov.au)

## **BROOKTON PLUMBING**

ABN: 37 675 595 336

**FOR ALL YOUR  
PLUMBING MAINTENANCE  
AND GAS FITTING NEEDS**

**\*PLUS SEPTIC WASTE  
REMOVAL**

**PHONE:**

**SEAN 0413 480 543 or  
NATASHA 0422 013 889**

**PL: 7130 GF: 006947 SWR: T235**

## **C & B TRANSPORT**

**DELIVERING GENERAL FREIGHT AND CHILLER GOODS**

**3 DAYS PER WEEK OR AS REQUIRED**

**TO**

**BEVERLEY, BROOKTON, PINGELLY**

**FROM**

**PERTH DEPOT CANNINGVALE MARKETS**

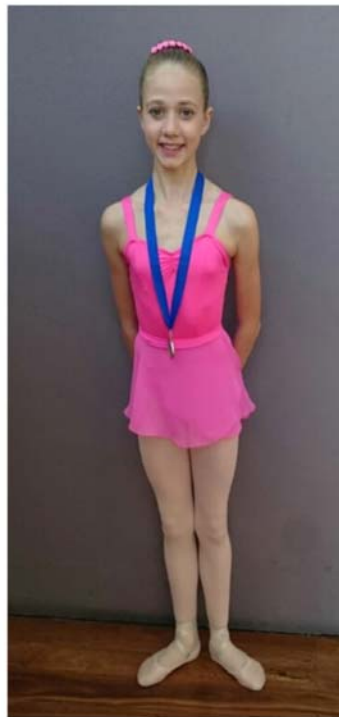
**PLEASE CONTACT PAUL BALDWIN**

**ON**

**0417 953 968 or 08 9646 0461**

**BIG ENOUGH TO DO THE JOB SMALL ENOUGH TO CARE**

## Spectacular results from Beverley dance students



The Toodyay Ballet School holds a variety of dance classes at the Beverley Town Hall on Monday afternoons during the school term. The school has had a strong group of followers since starting in Beverley.

The dancers have undergone grading for the year and the Toodyay Dance Troupe (*picture in middle on the right*) have recently returned from competing at the Festival of Dance in Mandurah.

Local dancer, Jiselle Hammond, 13 (*top left with Georgia McIvor*) has recently received a 100% in her Grade 6 ballet exam, quite a huge achievement. She has also won the State Medal for Grade 6, congratulations Jiselle.



Mollie Hare (*middle row on left*) has recently passed her advanced one exam with honours. At the Festival of Dance in Mandurah Mollie performed in the troop and they came second. Her big news is that in 2017 she will be performing in 'Hairspray' the musical. A big congratulations at such a young age, well done Mollie.



Mackenzie Miller (*bottom right*) competed in her first ever competition in the 6 and unders section and got an honourable mention.

Keira Miller (*bottom left*) competed in the 8 and unders classical ballet and came first. She also competed in the 10 and unders classical ballet quartet section with 3 other girls from Kellerberrin and Tammin and they came first.

## Beverley Historical Society

It is with great sadness that we acknowledge the passing of fellow member and a past President, Bob Hall. A bright and knowledgeable person and one of nature's gentleman. He will be greatly missed.

The local show is nearly upon us once again. Where has the time gone as it doesn't seem like a year since the last show. Once again we will have a display board to view. We are sure that everyone will be hoping for some sunshine on the day to draw a good crowd. We wish the Agricultural Society all the best for the 20th August.

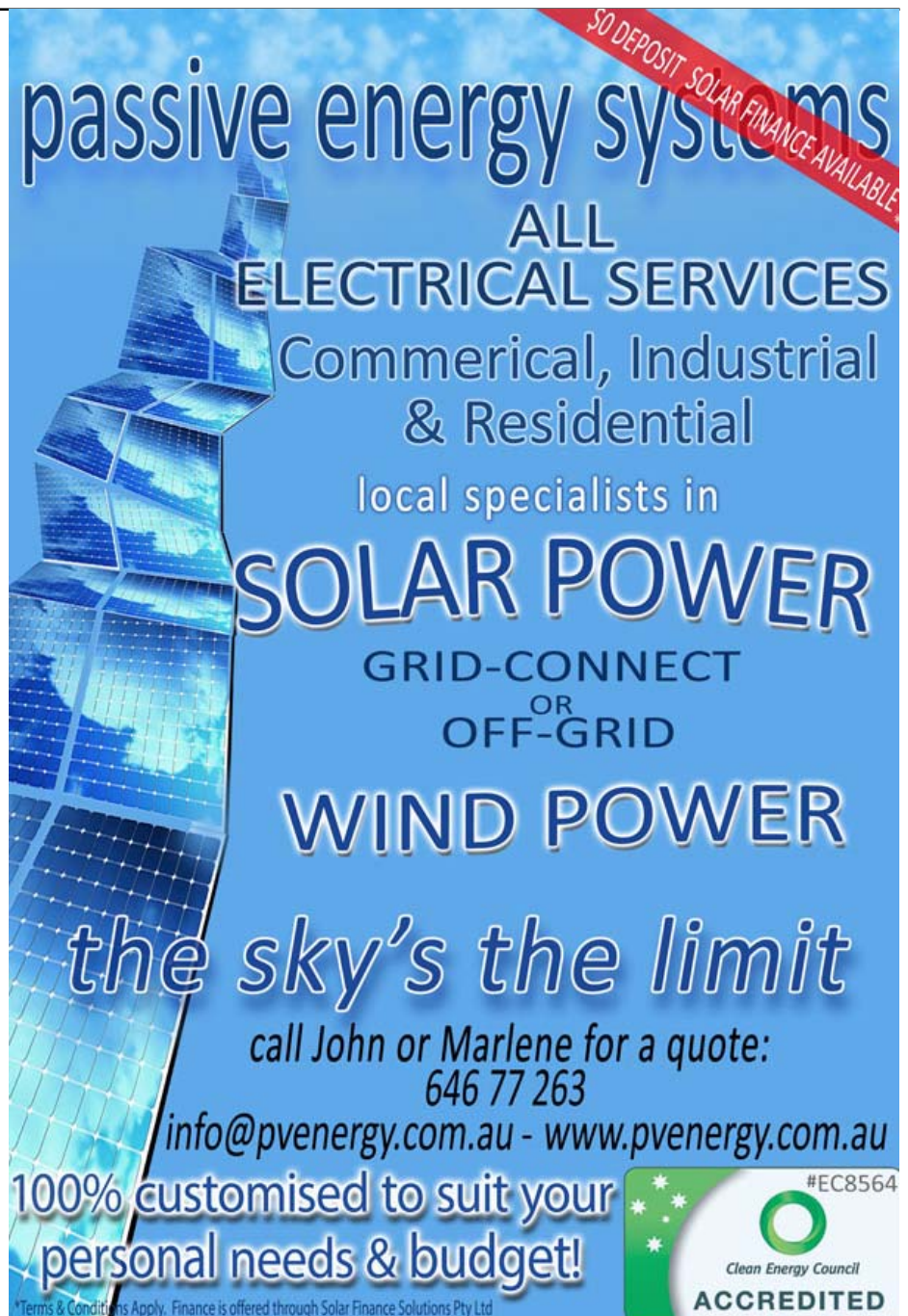
A mantle clock has been donated to the museum. It is in very good condition and has a picture of Melrose Abbey on the glass front. It came originally from Wales but it was actually made in America. We are very grateful for the donation and it will add to our display at the museum.

We still haven't received any information on 'Ethelvale'. Maybe some day we might find out about it, but till that happens it looks like it will remain a mystery.

The next meeting of the Historical Society will be held at the Dead Finish Museum on Monday 08 August at 2pm.


Gail Alabach - Hon. Secretary

Email: [bhsdeadfinish@gmail.com](mailto:bhsdeadfinish@gmail.com)



**passive energy systems**  
ALL  
ELECTRICAL SERVICES  
Commerical, Industrial  
& Residential  
local specialists in  
**SOLAR POWER**  
GRID-CONNECT  
OR  
OFF-GRID  
**WIND POWER**  
*the sky's the limit*  
call John or Marlene for a quote:  
646 77 263  
[info@pvenergy.com.au](mailto:info@pvenergy.com.au) - [www.pvenergy.com.au](http://www.pvenergy.com.au)  
100% customised to suit your  
personal needs & budget!

\*Terms & Conditions Apply. Finance is offered through Solar Finance Solutions Pty Ltd



#EC8564  
Clean Energy Council  
ACCREDITED

## RA—AN ENTERPRISES

All Dozer and Excavator Work  
Including:  
Dam Sinking  
Dam Cleanout and Enlarging

Excavator with Wood Shears,  
Tilt Bucket and  
Hydraulic Grab.

Locally Based at West Kokeby

Phone Ray 0428 936 621 or  
08 9646 4136

## NOW OPEN IN YORK



## BARCLAY BOOKS

New, Used & Collectible Books

If it's not in stock we will find it for you!

Open Thurs - Sun (& Public Holidays) 9am - 5pm

Old Fire Station, 151 Avon Tce, 9641 1665

[www.barclaybooks.com.au](http://www.barclaybooks.com.au)



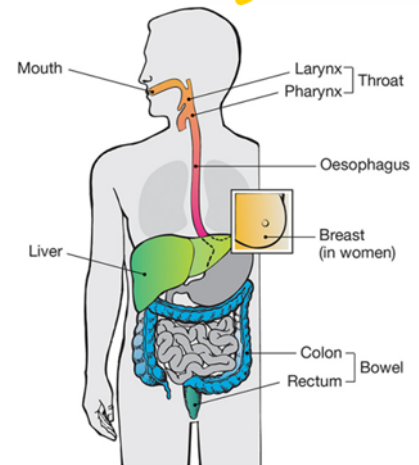
# Drinking alcohol increases your risk of cancer



Drinking and a timely reminder that alcohol is a cause of cancer. There is strong evidence that alcohol use increases the risk of cancers of the mouth, pharynx, larynx, oesophagus, stomach, bowel, liver and breast cancers. It is estimated that anywhere between 2000 and 6500 new cases of cancer (or 1.9–5.8% of all cancers) are due to alcohol use each year in Australia.

When it comes to cancer risk, there is **no safe level of alcohol consumption**. Even small amounts of alcohol increase your risk of cancer. The more you drink and the more often you drink, the greater your risk.

The world-leading cancer agency - the International Agency for Research on Cancer (IARC) - has classified alcoholic drinks and the chemical present in these drinks (ethanol) as a Group 1 carcinogen, the same classification as tobacco.



## Other negative effects of alcohol

Drinking alcohol has a number of negative effects other than increasing cancer risk.

Other health effects from risky alcohol drinking include damage to the liver, heart and brain, high blood pressure and stroke, and risks to unborn babies. Drinking alcohol at a young age can affect brain development and lead to alcohol-related problems in later life. Alcohol use may contribute to weight (fat) gain, and greater body fatness is a convincing cause of cancers of the oesophagus, pancreas, gallbladder, stomach, bowel, endometrium, ovary, kidney, liver, breast (in post-menopausal women) and prostate (advanced).

## Smoking and alcohol

It has been known for a long time that smoking is harmful to health. The combined effects of smoking and alcohol greatly increase the risk of cancer (more so than from either of these factors alone). This is because alcohol makes it easier for the mouth and throat to absorb the cancer-causing chemicals in tobacco. Up to 75 per cent of cancers of the upper airway and digestive tract can be related to alcohol plus smoking.

## So what should I do?

To reduce your cancer risk, Cancer Council WA recommends you limit how much alcohol you drink or better still, avoid drinking alcohol altogether. If you choose to drink, it is recommended you drink within National Health and Medical Research Council (NHMRC) guidelines, which advise **no more than 2 standard drinks a day** (for men and women); avoid binge drinking (drinking more than 4 standard drinks on a single occasion) and aim to have at least two alcohol-free days every week.

## What is a standard drink?

One standard drink is equivalent to:

100ml wine

285ml (1 middy) of full strength beer

425ml (1 schooner) of low alcohol beer

30 ml (1 nip) spirits

Cocktails may contain more than three standard drinks!



## Tips for drinking less

- Setting limits for yourself and sticking to them
- Aim to have at least 2 alcohol free days per week
- Try refreshing non-alcoholic drinks – mineral water with lemon, lime and soda water etc
- Try low alcohol or no-alcohol alternatives such as light beer or non-alcoholic beer
- Use standard drinks to monitor how much alcohol you drink. By converting what you drink into standard drinks, it is easier to keep track.
- Starting with non-alcoholic drinks and alternating with alcoholic drinks
- Drink slowly – take sips and not gulps. Put your glass down between sips.
- Avoid salty snacks – salty foods like chips make you thirsty, so you drink more.
- Avoid ‘rounds’. Drink at your own pace, not someone else’s. If you do participate in rounds, include some non-alcoholic drinks.
- Eating before or while you are drinking. Eating slows your drinking pace and fills you up.
- Finish one drink at a time: If people top up your drink it can be hard to keep track of how much alcohol you have consumed.

**For more information and/or to book a talk about the prevention of cancer for your community please ring 9574 5392**

Karen Hansen, | Regional Education Officer Wheatbelt | Cancer Council WA Email: [khansen@cancerwa.asn.au](mailto:khansen@cancerwa.asn.au)

# Beverley Show

## 2016 EXHIBITION SHED

**140th  
ANNUAL SHOW**  
Saturday 20 August 2016



**BEVERLEY**  
AGRICULTURAL SOCIETY INC.  
'The Safe Road to Beverley'



**ADMISSION**  
EXHIBITORS, COMPETITORS AND ADULTS - \$13.00  
CHILDREN - \$6.00 AND CHILDREN under 4 - FREE  
PENSIONERS - \$5.00 (Disabled, aged pensioners or veterans)  
GATES OPEN AT 9AM

The 2016 Exhibition Shed is proudly sponsored by **PHOENIX SHEDS**

2016 Show Schedule is now available in most business outlets.

A download version is now available at: [beverleyagsociety.com](http://beverleyagsociety.com) in the forms section of the website.

Get your entries ready, below are the categories.

- |               |               |
|---------------|---------------|
| ✦ WOOL        | ✦ PHOTOGRAPHY |
| ✦ NEEDLEWORK  | ✦ PRESERVES   |
| ✦ PRODUCE     | ✦ HOME BREW   |
| ✦ FRUIT       | ✦ ART         |
| ✦ VEGETABLES  | ✦ COOKERY     |
| ✦ HANDICRAFTS | ✦ POULTRY     |
| ✦ FLOWERS     | ✦ EQUESTRIAN  |
| ✦ JUNIORS     | ✦ CATTLE      |

**ALL ENTRIES WILL GO INTO THE DRAW TO WIN A FITBIT CHARGE**



**EASY • DIRECT • SMART**

- Unbeatable wholesale pricing from your local W.A. distributor.
- Unique Design Combinations of both hot rolled and cold form steel portals providing maximum strength and efficiency.

**Call Ryan 0427 424 672**

website: [phoenixsheds.wa.com](http://phoenixsheds.wa.com) email: [phoenixsheds@bigpond.com](mailto:phoenixsheds@bigpond.com)

### MOYLAN'S PLUMBING & GAS

ALL PLUMBING MAINTENANCE

Domestic • Gas & Hot Water • Backflow

**TONY MOYLAN** ♦ Reliable & Professional Service  
Plumber ♦ Competitive Rates  
PL8253, GF012078, BF0690 ♦ Pensioner Discount  
♦ Free Quotes

**Mob: 0411 869 762**

Ph: 9641 1609

Email: [moylanplumbing@westnet.com.au](mailto:moylanplumbing@westnet.com.au)



### Marcell's Cleaning

- \* Domestic or Commercial \* Move In / Move Out
- \* End of Lease - Bond Recovery \* Spring Cleaning
- \* Weekly \* Fortnightly \* Offices \* One-Off Cleans
- \* Gift Vouchers \* Rubbish Removal \* Gutter Cleaning
- \* Prompt and Professional Service

**Steve Thornton**  
**0429 312 057**

Beverley & Surrounding Areas



Kim Harris  
0417 935 414

[harrisdrafting@inet.net.au](mailto:harrisdrafting@inet.net.au)



### ARCHITECTURAL DRAFTING SERVICES

- |             |             |                  |
|-------------|-------------|------------------|
| EXPERIENCED | RESIDENTIAL | COMMERCIAL       |
| DESIGN      | ADDITIONS   | COUNCIL APPROVAL |

# Beverley's Old Catholic Church 1890 – 1933

Members of the Beverley Historical Society visited the Old Catholic Church in Queen St last month. Recent renovations of a new roof and glass-paned windows combine with the old architecture to give the neat building a spacious and light-filled quality. The history of the church has been compiled from newspaper reports.



## New Catholic Church planned

It was reported in *The WA Record* December 1885 that the Catholics of Beverley were to start working towards building a church in the area. In August 1889 Father Gibney called for tenders from persons willing to deliver 100 yards of good building stone on the Catholic Glebe at Beverley. It was noted that the present structure of mud walls and thatch roof was considered unsuitable for divine service.

## Laying of Foundation Stone of the Church of the Sacred Heart, Beverley. 17<sup>th</sup> August 1890

The laying of the foundation stone was a day to be remembered by the good people of Beverley and visitors. A special train to convey people from York was engaged by Fr Gibney, and at 9am, with carriages full to overflowing, the train steamed out of York. In Beverley, it was reported that there must have been close to three hundred people present. Mass was celebrated by Fr Gibney, the usual prayers were recited and after declaring the foundation stone of the Church of the Sacred Heart duly laid, the very Rev Fr Gibney addressed those present. Donations at the stone on the day amounted to £26 and 2 shillings. Messrs. Davey and Tomkinson were to erect the church. (From *The WA Record* August 1890)

## Description of the New Building

It is of Gothic style, stone-built with walls 18 inches thick. The gables are surmounted by Irish crosses. The exterior, though unpretentious, has a very neat look and conveys the idea of durability. The interior is very pleasing and its design and contents in

general give a satisfactory impression. The measurements are 52ft by 29 and the wall elevations 15ft. There is a neat altar quite proportionate to the size of the sacred building. Three handsome and suitably sized pictures overhanging the altar give a very devotional appearance:- the crucifixion, and on either side representations of the Sacred Hearts of Jesus and Mary. (From *The WA Record* March 1891)



## Consecration of the Church of the Sacred Heart, Beverley. December 1890

The church was solemnly blessed and opened by Fr. Gibney in December. The Sisters of Mercy came from York to attend the Mass, one of whom presided at the harmonium and assisted by Miss E. Davies of York, and Mr P. Whitley of Beverley, intoned the musical parts of the Mass very effectively. Fr. Gibney preached upon the gospel of the day and notified that Mass would be celebrated in future in the Church of the Sacred Heart on the first Sunday of every second month. (From *The WA Record* March 1891)

## Church Religious and Social Activities

There are many reports in the *Beverley Times* of weddings at the Catholic Church, notices of Masses and reports of meetings of various committees attached to the Church as well as the Convent that opened next door. Social Events such as Balls and Concerts are mentioned but, while organised by the church, actually took place in the Mechanics Institute. Two examples of newspaper articles follow.

A new Church of the Sacred Heart was opened in Lukin St in 1933.



## Catholic Church Bazaar.

A decided forward move has been made in connection with the proposed bazaar in aid of the Beverley Catholic Church and Convent fund. Meetings of members of the congregation were held at the Church on Sunday evening and at the Freemasons' Hotel on Tuesday night, over which the Rev. Fr. Hallinan presided.

It was decided that the bazaar should be opened on the evening of Wednesday, 16th March, and extend over four days, concluding on Saturday night, 19th March. Mr. J. F. Punch was appointed general secretary, with Mr. A. Fraser as his assistant, whilst Mrs. Hine was chosen as ladies secretary.

The following stalls were decided upon, to be conducted under the management of the ladies and gentlemen named:—

- "Young Australia" (children's stall) for goods made up by children. Miss Clohesy and Miss Kathleen Blechynden.
- "The Geisha" (fancy stall). Mesdames McDonnell and Cahill.
- "Celtic" Stall (fancy). Mesdames Wilson and Newby.
- "Swan" (refreshment stall). Mesdames H. G. Blechynden, Quinlan, Austin, Jenkins and S. T. Blechynden.
- "The Daphne" (flower and confectionery stall). Misses Maud Harford and Cahill.
- "Beverley Produce Stall." Messrs. McDonnell, Quinlan, Austin, Edwards, H. Blechynden and M. Monaghan.
- "Post Office." Miss Lillian Edwards and Master Vincent Harford.
- "Bran Dip, Fish Pond and Museum." Master Cyril Whitely.

The stall-holders will constitute the committee with power to appoint assistants and arrange all necessary details. A penny ballot will be taken on the various stalls, the prize being a fat sheep, the gift of Mr. T. H. McDonnell.

An art union will be conducted in connection with the bazaar, for which the following substantial prizes are offered:—(1) £6 6s, presented by Mrs. Austin and Mrs. H. G. Blechynden; (2) inlaid table, gift of Mr. A. Fraser, or fat bullock, gift of Mr. P. Quinlan; (3) suit of clothes, presented by Mr. A. E. Nind; (4) dressing case, gift of Mr. J. W. Molloy; (5) wedding cake, presented by Mr. F. B. Chapman. A prize of £3 3s cash will be awarded to the one selling the most art union tickets (minimum 100).

Mr. Fraser's donations (inlaid table, what-not and three gispy tables) will be on view at his shop, Vincent-street.

The next meeting will be held at the White Hart Hotel on Tuesday, February 1st.

It will be remembered that the last bazaar and accompanying celebrations held under the same auspices, which took place two years ago, realised the magnificent profit of £360, and it will

took place two years ago, realised the magnificent profit of £360, and it will be conceded that the committee have set themselves a by no means light task when it is stated that they are laying themselves out to establish a new record on this occasion. The object is a worthy one, and we wish them every success in the undertaking.

## First Communion Festival.

The important and attractive festival of the First Communion was held on Wednesday last by the Catholic community in their new Church of the Sacred Heart, attached to the Convent. All the school children assembled for Mass at 8 a.m. Amongst these figured conspicuously the intending first communicants; the girls arrayed in white dresses with wreaths and veils, the boys wearing armlets of white satin with communion medals fastened on the left shoulder, and all bearing lighted candles decorated with flowers. The appearance and demeanour of the children reflected the greatest credit on their parents and on the good Nuns, who for some time have been zealously preparing for the great day. During Mass the appropriate hymns of the First Communion were sung by the whole body of the children, accompanied on the organ by Miss Harford. After Mass the first communicants with their parents were entertained at breakfast in the High School by the Rev. Mother and community. Amongst the many good things provided was a large and beautiful Communion cake presented by Miss Molly Newby, one of the happy first communicants. After breakfast the children assembled at the old Church and were joined by their parents, a great portion of the Catholic congregation, besides many friends of other denominations. The arrival and two gaily decorated lorries were hailed with shouts of joy, and in the twinkling of an eye the little ones were all aboard and eager for a start. A long procession of sulkies and buggies then proceeded through the town to the racecourse, where lunch was found to be ready. An ideal day was sympathetically provided by the clerk of the weather, and all the usual sports and pastimes were indulged in close up to 6 o'clock. The spirit of youth and fun woke up the waning energies of even the elders, and the married ladies race particularly was hailed with cheers and shouts of congratulation as our old established and much respected resident, Mrs. McDonnell literally romped home an easy winner.

Just previous to the departure from the course the Rev. Fr. Hallinan gave a short address. He said he wished to thank all who had helped to make the day so enjoyable and the festival such a great success. In particular he would express his gratitude to Mr. Punch for the skilful manner in which he had managed the children. One thing he (Fr. Hallinan) wished to say with special emphasis, and it was, that he desired to say he had invited three special guests to this picnic who he himself wished to honor in a special manner,

←Beverley Times JAN 1910

↓Beverley Times APR 1909

guests to this picnic who he himself wished to honor in a special manner, and whom he felt sure all others would join him in honoring. These three special guests were Miss Annie Boyle, Miss Conny McDonald, and Miss Kathleen Blechynden. These young ladies are the collectors of the interest due in the parochial debt, and the honor as well as the happiness of himself and the Catholic community lay in their hands. The Rev. Father then called for three hearty cheers which was responded to with enthusiastic vigor. Mr. Punch, Mr. Whitely and Mr. Reidy then complimented Fr. Hallinan, the Nuns and their co-workers on the success of the day, and all departed filling the woods with cheers and song.

The heaviest downfall of rain known to have occurred within the memory of the most ancient inhabitant of town and district took place on Saturday afternoon last, when 160 points were registered in less than half an hour. Several bridges, culverts and fences were washed away. Mr. Jas. F. Punch was a heavy loser his garden being almost totally washed away. The Chinaman's garden also suffered severely. A wash-a-way the other side of Dale Bridge caused the Albany train to Perth to be hung up all night in Beverley, whilst the train from Perth was delayed in York for the same reason. Mr. R. T. Edwards, of Hunt-road had to vacate his dwelling on account of a portion of the foundations being washed away.





Easing the impact

**No one expects a spinal cord injury. Yet every day, someone, somewhere in Australia, sustains this life changing injury.**

**PBF Australia** is a membership based not-for-profit organisation and we recognise that the financial, physical and emotional costs of spinal cord injury can be devastating. Injury can occur anywhere - at home, at work, on the road or in the water. PBF membership offers:

- Low cost protection for you and your family
- \$250,000\* payment should you sustain a permanent spinal cord injury
- Full Family Annual Membership \$85^
- Cover 24 hours a day, 7 days a week
- Full cover up to the age of 85 years
- Member benefit claims processed as soon as possible after diagnosis is confirmed

**Paraplegia and quadriplegia are among the most expensive chronic injuries a person can face. PBF membership provides the financial security so that the associated immediate expenses are covered.**



Call **1800 809 780** to join PBF and get cover today!

Visit [www.pbf.asn.au](http://www.pbf.asn.au) to join online or to learn more about our injury prevention, peer support and gifting programs

\*See our Product Disclosure Statement for full terms and conditions [www.pbf.asn.au/corporate-governance/](http://www.pbf.asn.au/corporate-governance/). ^Includes all children under the age of 18. Please consider whether the PBF membership product meets your requirements prior to purchase

# GOVERNMENT INFORMATION SERVICES

The mobile service unit from the **Department of Human Services** will be at your local CRC on **Friday 12 August** for an information luncheon session covering the MYGOV service. Starting at **12 noon**, the session will be one hour.

We will be covering how to register for MY GOV and answer questions about how it works and what it can provide. We would like those that come to bring their smart devices – be that a phone or iPad type device, so that they can actually register and set up as well. We have Wi-Fi available at the centre.

We find that most people in the community will either need the Medicare App, ATO or Centrelink App as well which we will assist with. Register now by phoning 9646 1600.

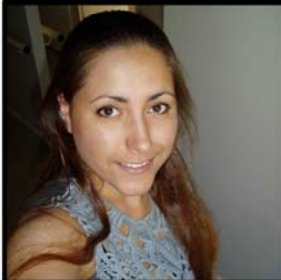


## Do you need to lodge your tax return online?

Your local CRC offers you a free private area, with internet, computer and printing facilities. We can provide the services of an Australian Taxation Office (ATO) approved Tax Help Volunteer. He will be able to assist eligible clients, free of charge.

You can access any of these FREE services by calling the centre on 9646 1600, bookings are essential.

# NEWS FROM THE CRC



## Congratulations Ashleigh Ugle

The staff and committee wish to congratulate Ashleigh on her ongoing achievements since she started at the CRC. She recently completed her Certificate III in Business Administration and has signed up to study Certificate IV in Business Administration.

This certificate will be a supervisor role and we have many projects planned ahead to challenge her skills and abilities, which we are sure she will be faultless in completing.

## COFFEE WITH A COPPER

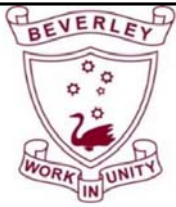
We had a fantastic turn out to the meet and greet morning tea for new OIC for Beverley, Ms Karen Berry.

It was an extremely freezing morning and we thank all of the guests that attended. We all enjoyed a beautiful morning tea that was prepared by the CRC team whilst we listened to Karen talking about e-watch, Crime Stoppers and new initiatives that she plans to implement.

Many of the guests signed up for the e-watch newsletter to keep informed of the latest news from the Beverley region. If you would like to sign up simply go to: [www.ewatch.com.au](http://www.ewatch.com.au)



**Memberships renewals** have been sent out to existing CRC members. The fees and benefits are varied for each membership category which are: basic-\$5, individual-\$25, community group-\$40 and business-\$65. Forms are available at the front reception of the centre or available for download at: [www.beverleycrc.net](http://www.beverleycrc.net)



# Beverley District High School

For more information about the school, visit our website!

## Beverley hosts Leadership Forum

Student leaders from across the Wheatbelt will be descending on Beverley for a special leadership forum on Thursday 11<sup>th</sup> August. The forum, organised by Beverley Deputy Principal Aliesha Murray, will provide an opportunity for student leaders to work and socialise together, develop their project planning and management skills, and be inspired by prominent community leaders.

One special guest at the forum will be **Minister for Water, Sport and Recreation and Forestry**, local member, **Hon Mia Davies, MLA**. She is a wonderful role model for aspiring leaders from the Wheatbelt.



The other will be **Western Australian of the Year (2015)** and former **WA Chief Scientist, Professor Lyn Beazley**. Professor Beazley, a neuroscientist, spent 30 years researching brain damage recovery, and advised the State Government on science, innovation and technology until 2013. She is passionate about science education and encouraging young people to enter into science as a career.



Beverley boasts clever and committed student leaders who have shown strong initiative and skill in driving innovative programs and events across the school this year. Head of School, Candice Treasure, is a talented Year Ten student who especially enjoys Human Biology and has ambitions to study Medicine at university.

The school also boasts some very talented and gifted students who make the most of the opportunities provided by the school's TAGS extension programs run by specialist Science teacher Sarah Aynsley.

Year Six student Barclay Wilkinson is another school leader who thrives on challenge. Barclay was a member



of the very successful team who came second in the recent MegaMinds challenge in York.

These students are sure to enjoy the presentations by the special guests, as well as the opportunity to mingle and work with student leaders from other schools in the region.

## Electric Car Challenge

Another opportunity for our students to be inspired by science and technology occurred when Grant Hobbs of the Men's Shed arranged a visit to the school from 22 year old university student James Hill who, with brother Peter, has designed an electric vehicle which aims to travel 1700 km on a single battery charge.



Having formed the enterprise *Coulomb Motorsport*, the talented youngsters aim to break a world record in fuel efficiency with their amazing machine. A few lucky students had the opportunity to drive the vehicle under James's watchful eye. Luckily, Joshua Styles, Year 7, did not push the car to the 90km/h that it is capable of as he trundled around on the school quadrangle. A big thankyou to Grant and James for organising the visit.



## Welcome to new families

We are pleased to welcome quite a few new students to the school since last term. It is lovely to welcome them to the Beverley school community. If you see a new family, please introduce yourself and say hello!

## What's happening this term?

This term we will continue to be very busy accelerating the learning of our students, especially in our priority areas of literacy, numeracy and science. In our Arts learning area, we will be working on a whole school performance of the Jungle Book, to be presented to the community early in Term 4.

Classes will also work on displays for the **Beverley Show** on the **20<sup>th</sup> of August**, an event we always look forward to. In the lead up to the show, we will be working hard to develop our students' awareness of road safety, as we reinforce the Show's message of *A Safe Road to Beverley*.

This term in sport we will be focusing on athletics, and students are already out and practising their team sports, sprints and jumps for the **faction carnival** on the **26th August**.



## SCHOOL FETE:

Another exciting event to look forward to will be the **School Fete**, to be run by the Beverley P&C on **Friday 16<sup>th</sup> September**. This year, the school fete will be raising

money for a **nature playground**, and the committee is already abuzz with ideas about how to make it a challenging, exciting and stimulating place for our students to play. The whole community is welcome to join us for an entertaining and value packed family event at the fete.



*Anthea Cooke and Sally Kilpatrick hard at work in the school's canteen, which operates two days a week.*

The P&C, under the guidance of President Tim Cooke, Secretary Sam Mearns, Vice President Monica Van Der Snoek and Treasurer Jacinta Murray, is a very important part of our school, and keeps many important services ticking along that support all our

families. The P&C runs the **canteen** and the **uniform shop**, and oversees fundraising for many important school programs.

Committee members including Cara Hammond, Kerry-Anne Doyle, Linda Lewis, John Hawke, Anthea Cooke, Mandy McLean and others are also very active, organising special events such as discos, sausage sizzles, catering for carnivals, and many other activities. The K/PP committee, chaired by Sharon Young, is also very busy with fundraising and organising events. P&C meetings are held in the staffroom at school on the last Tuesday of each month at 7pm. All are welcome.

## Congratulations



Congratulations to Alieshia Murray, who has won the fixed term Deputy Principal's position at Beverley DHS. The position was advertised state-wide and attracted a competitive pool of applicants from a range of country and metropolitan schools. We are delighted to have Mrs Murray continuing to provide leadership in our school. She is well regarded because of her calm and happy demeanour, her excellent organisational skills, and her commitment to supporting students, local families and community organisations.

## Kindy

### enrolments for 2017



At Beverley DHS, our Kindy program provides a wonderful happy, friendly start to school, with small classes and talented, experienced staff.

Feel free to come down to the school to meet the Kindy staff, Angela Sims and Lois Edwards, on Wednesdays or Thursdays. Kindergarten students who are eligible to enrol for 2017 will have birth dates between 1/7/2012 and 30/6/2013. Enrolment Forms can be collected from the school office during the hours of 8.30am to 3.15pm.

Alternatively, please ring the school on 9646 1165 or email [beverley.dhs@education.wa.edu.au](mailto:beverley.dhs@education.wa.edu.au) to have these documents emailed or posted to you. Completed forms and relevant documents are to be returned to



the school office as soon as possible.

---

# Colourful Fruits and Vegetables That Boost Your Immune System

In this series I will focus on boosting your immune system. I will include simple but tasty recipes for soups, stews or hot drinks.

## The Human Immune System Simplified

The immune system is a protection mechanism, designed to defend a person against microbes, bacteria, toxins, viruses and parasites. In order to understand the human immune system, it may help to take on the perspective of what happens once it dies.

When this immune system shuts down the body is invaded within hours by a number of various parasites, bacteria and microbes; and once it stops functioning, it will take only a few weeks for these organisms to completely invade the body.

When a person dies, it takes only a few weeks for these organisms to completely break down the body and essentially carry it away, leaving only the person's skeleton. The human immune system is keeping this from happening while a person is still living. It works twenty-four hours a day in thousands of ways, working largely unnoticed. One of the things that may cause us to notice our immune system is when it fails. We notice the work of it when we cut ourselves, the wound heals eventually, or if we breathe in germs that are floating in the air the immune system fights these germs, although on occasion a germ gets past and we catch a cold, the flu or worse. The presence of a cold or flu is a sign that the person's immune system has failed. Most of the germs or bacteria die in the person's saliva or in their stomach acid. However now and then some of these get through and causes food poisoning, something that has usually a very visible effect of the breach by causing diarrhoea and vomiting. Allergies are another example of an immune system overreaction to certain stimuli. Diabetes means that the immune system inappropriately attacks cells in the pancreas and destroys them. Organ transplants are more difficult because the immune system can reject a transplanted organ.

Most people, including many physicians, do not realize that 80 percent of our immune system is located in your digestive system, making a healthy gut a major focal point if you want to maintain optimal health. Remember, a robust immune system is your number one defence system against ALL disease. An imbalance in the intestinal bacteria causes many problems. Proper food choices will help shift the bacteria. But, just like your lawn, sometimes you may need to "reseed" areas that have become barren for whatever reason. With the cold and flu season just hitting about everyone, now it is more important than ever to get your immune system in the best shape you can. Getting enough sleep and exercise, and keeping your stress level down, can really do a lot for your health. But having a right diet is just, if not more, important. Luckily, there are plenty of fresh fruits and vegetables out there that have immunity-boosting properties. Tip: Look for foods that are rich in colour – that's a sure-fire sign that they are also high

in immunity-boosting antioxidants. Green, blue, purple, red, orange and yellow fruits and vegetables really fit the bill here. By eating fruits and vegetables of a variety of different colours, one can get the best all-around health benefits. Each different colour contains unique health components that are essential to our health. Fruits and vegetables are very important to our health because they are whole foods, created by nature. The processed foods that we so commonly eat, can never compare to the health benefits provided by strawberries or broccoli, which have fiber, vitamins and enzymes built right in. Eating plenty of them helps prevent heart disease and strokes, diverticulitis, control your blood pressure, prevent some types of cancers, and guards against cataract and macular degeneration or vision loss.

The phase "eating a rainbow" is a simple way of remembering to get as much colour variety in your diet as possible, so that you can maximize your intake of a broad range of nutrients. We will start with the colour orange/yellow.

Here is a recipe for a wonderful orange winter soup. This soup is very easy to make and so warming.

## Orange Sweet Potato, Pumpkin and Carrot Soup.

- 2 medium orange sweet potatoes (Kumara), peeled and diced
- Half a butternut pumpkin, skin removed and diced
- 1-2 cups carrots, peeled and diced
- Piece of ginger peeled, sea salt, freshly ground black pepper, 1 tsp. turmeric powder or curry powder.

Place all vegetables in large pot; pour stock or filtered water over it to cover and add the seasoning.

Cook gently over medium heat until the vegetables are just tender.

Remove ginger, let cool slightly and use a stick blender to make the soup thick and creamy, however leave some chunky bits to show.

At this stage you can add some cooked grains such as rice or quinoa to the soup and re-heat gently.

Serve in individual bowls, place a dollop of natural yoghurt in the centre and sprinkle some chopped parsley over the top.

If you have used only water for the soup pour some extra virgin olive oil over the top and stir gently.

By Valerie Gunsch  
Dip. C.N.C. Mac. H.V. P.P.  
Clinical Nutritionist, Profemme Practitioner  
Email – [healthylivingbev@westnet.com.au](mailto:healthylivingbev@westnet.com.au)

## **BILL CHAMBERS**

### **Chartered Accountant & Registered Tax Agent**

Tax return preparation

Financial and accounting  
advisory services

Office hours:  
Wednesday  
9.15am - 5.00pm

129 Vincent Street, Beverley  
9646 1566 (Monday - Friday)



### **COMMERCIAL OFFICE SPACE**

**\*\*AVAILABLE FOR LEASE\*\***

Available for lease at the Beverley Community Resource Centre. Centrally located in town, this office space has internet, a fridge, desk, storage cupboard, air conditioning / heating and is private.

Expressions of interest or further information please contact Amor or Sam on 9646 1600 or email: [beverley@crc.net.au](mailto:beverley@crc.net.au).

## **AVON DRILLING SERVICE**

**Mick Lewis  
Mob: 0427 814 055**

**WATER BORES  
BORE DEVELOPMENT  
MINI EXCAVATOR HIRE  
POST HOLE DRILLING**

## **TO MAKE THE MOST FROM YOUR FERTILIZER INVESTMENT**



Call Brett Coxon

 0427 766 506

Beverley, Brookton  
Cuballing  
Kulin (West), Narrogin  
Pingelly  
Wandering  
Wickepin

Talk to me about all your fertilizer requirements.

Our new compound NPK fertilizer, Vigour, is suitable for all cropping situations that require potassium.

**MAPSZO**

**UAN**

**IGOUR**

**SUMMIT**  
QUALITY TECHNICAL SERVICES

**Elders**

**SUMMIT  
FERTILIZERS**

**SUPER  
CHARGE**  
BATTERIES

Licence Number: L/NMRB5463

## **BEVERLEY TYRE SERVICE**

**Your local tyre specialist**

**All Major Brands**

**Second Hand**

**Batteries, Repairs, Fitting and Balancing**



**Bridgestone Preferred Dealer**

**Open Saturday mornings, except long weekends**

**Ph/fax Alan on 9646 1607 or a/hrs 0428 129 575**

**GOODYEAR**

48 Dawson Street  
(Old Telecom Shed)

**BRIDGESTONE**

### **Station Gallery**



Following a committee meeting on Friday 1<sup>st</sup> July we had our annual get-together to celebrate the end the season's events at the Platform Theatre. It was a freezing night to be out but good company as always defeats all odds and made for an enjoyable night. Thanks Steve Ramm for taking this photo - especially capturing the two misfits (Jacks or robbers?) at the far end of the table!

### **Artist-in-Residence**

Amongst the party at the Station were artist-in-residence Kathy Allam and her husband Mike. Though only at the Station for the weekend they got the feeling for the place and hope to be back for a longer residency. Kathy's unusual art of the reuse of plastic bottles transforming them into cloud forms has to be seen to be believed. Her coming solo exhibition 'The Strange Familiar' runs from Wed 16 - Sun 30 July 10.50am - 5.00pm at ARTLAAB, Masonic Hall, 6 Broadway, Nedlands. Free.



From 06 - 09 July these four talented ladies from the WA Watercolour Society enjoyed painting whilst manning the Gallery, meeting tourists there, and also the local towns people up and down the street.

Dr Myer Taub arrived July 12 followed by his colleagues Andrew Lamprecht, Palesa Matabane, and photographer Aliza from Melbourne to work on several art performance projects with themes associated with treasure, presence and collaboration. As the performances are on the 29 and 30 July all will be revealed in September's Blarney!

From 15 - 30 August, photographer Josh Wells, will be the artist-in-residence and will be holding a workshop Sunday 28 August. Contact Marylou to register and for more details.

Information on residencies check with Artist in Residence Coordinator Marylou Hutchinson on 9647 1027 or 0427 085 511 or email: [hutchinson@wn.com.au](mailto:hutchinson@wn.com.au)

### **Artists in Residence Programme 2016**

August: Josh Wells - photographer - WA

September: Paul Amyes - photographer - WA

October: Alan Pickering - painter - WA

November: Mat Vaughn - Victoria - painter

December: Marlish Glory - writer - WA

### **Beverley Station Singers**

The Station Singers performed at the Voice Moves Choir Bash in Riverton on Sunday 3<sup>rd</sup> July amidst much acclaim from the other choirs, especially when Bolla played harmonica and Phil piped to Mull of Kintyre.

Coming performances are the Beverley Show on Saturday 20 August, the Voice Moves Beverley Choir Bash on Saturday 10 September, and the Dunsborough Songfest Friday 11 - Sunday 13 November, and the Beverley Community Christmas Concert Saturday 17 December.

The next get-together to practice for all these events is at 7pm on Wednesday 27 July.

Kelly Newton Wordsworth directs the group on a monthly basis (\$35pp to be paid up-front 3 monthly, or \$50 per session). Anyone interested in joining the singing group contact Tracey Fleay- Mob: 0409 481 029 or E: [traceyfleay@hotmail.com](mailto:traceyfleay@hotmail.com)





The Platform Theatre is in recess till September. To open next season will be the annual Voice Moves Choir Bash on the afternoon of Saturday 10 September 2016.

If any community group is looking to raise funds please keep it in mind that the Platform Theatre is available for events such as movie nights. With just a minimal hire cost of screen and projector, it makes for an easy fundraiser.

If you would like to be included on the email list for notification of coming events (so you can forward to friends), email secretary Sarah Miller [miller@reachnet.com.au](mailto:miller@reachnet.com.au)

**Beverley Station Arts Membership**

It's time for membership renewal! See Membership Application form below. We thank you for your support in the past by attending events at the Platform Theatre and hope you will consider becoming a member which will give you discounted rates for all events and will assist us in maintaining the venue and to continue presenting a variety of entertainment for your enjoyment.

We look forward to seeing you at the events we have planned for the next season. Our programme will be available soon.

To become a member of Beverley Station Arts Inc (Friend of the Station) please hand your Membership Application form to Treasurer Pauline Knight at the Newsagency, phone 9646 1142. Membership forms can also be downloaded from [www.beverleywa.com](http://www.beverleywa.com) (NB cheques to be made payable to Beverley Station Arts) and send to PO Box 112, Beverley 6304.

**The Station garden is available for public use at any time, just open the gates and enjoy!**

**Station Gallery Open Hours**

11.00am - 3.00pm on Thursday, Friday, Saturday and Sunday

Jenny Broun, President, Beverley Station Arts: 9646 1500 / 0419 040 063 / [brounj@westnet.com.au](mailto:brounj@westnet.com.au)

**BEVERLEY STATION ARTS INC.**

**Membership Application/Renewal**

Membership means

You become a "Friend of the Station"

Your support helps us to maintain the Gallery and continue to present new and different events to the Platform Theatre

Beverley Station Arts is a non-profit organisation run by volunteers

As a member you will receive a Membership Card and discounted rates for any events at the Platform Theatre

Annual membership is: \$30.00 p.p. (New member), \$25.00 p.p. (renewal).

Which covers the period 1<sup>st</sup> July - 30<sup>th</sup> June.

Name:.....

Address:.....

Phone:.....  Email:.....

New member \$30 pp      Renewal \$25 pp      Donation

Please make cheques payable to "Beverley Station Arts Inc. and forward to P.O. Box 112, Beverley WA 6304 or;

Pay directly to our account at ANZ Bank account : BSB 016 540 Acc. No. 2024 40346

Enquiries can be directed to: Pauline Knight on 9646 1142

**VALLEY FORD**

- NEW & USED VEHICLES •
- SERVICE & PARTS •

**9622 5588**

[www.valleyfordnortham.com.au](http://www.valleyfordnortham.com.au)

Cnr Peel Tce & Fitzgerald St, Northam

**NORTHAM HYUNDAI**

**SALES ★ SERVICE ★ PARTS**

**9622 5588**

[www.northamhyundai.com.au](http://www.northamhyundai.com.au)

**37 Fitzgerald Street, Northam**

## **PRIMARY HEALTH SERVICES**

Available to the community of Beverley

You can refer yourself or your child to the following health professionals:

**Child Health Nurse** - 9646 3200  
to make an appointment, Hospital Admin Staff will assist you in setting an appointment time, which will be on most occasions a Monday.

**School Health** – 9641 0200

**Dietetics** – 9690 1320

**Occupational Therapy** - 0429 466 224

**Physiotherapy – a Doctors referral is required** – Please send all referrals to P.O Box 140 Beverley or drop them into the Beverley hospital. All referrals are forwarded onto to Northam Hospital where they are prioritised and wait listed. Clients will be acknowledged with a letter informing them of the approximate wait time and will be seen in Beverley

**Podiatry – a Doctors referral is required**  
Please send to PO Box 142, Beverley or drop referral to the Beverley Hospital (attendance Fridays) \*\*

**Social Work** – Phone 9690 1320

**Speech Pathology** – Phone 9690 1321

- Services are provided at the Primary Health Building, on the corner of John and Forrest Streets, Beverley. There may be a waiting time for services.
- These services are provided by WA Country Health Service and are free of charge. (Please note that the Podiatry Service is a private practice and is not free of charge - there is a fee at first consultation but the WACHS/Beverley Health Service do not get involved in taking fee payments – only assisting at receiving the referrals for appointment. The Doctor's referrals are usually faxed to the service provider, Como Podiatry, who contact the patient by phone and make an appointment).
- If you have any concerns about your own health or your child's health and development, please phone the relevant health professional to discuss your concerns. Alternatively, you can speak to the Child Health or School Health Nurse, or your GP, to discuss your concerns and to determine the most appropriate referral.

**Avon & Central Primary Health**  
**Promoting Healthy Lifestyles**



*T.M. Hair Design.*



Thanks to all for your patience while we have had staff on sick, holiday & honeymoon leave.

It has created difficulties for you to get appointments and caused delays in providing service. We look forward to having everyone back on deck very soon and appreciate your patience until we are all back once again.

*We happily offer a special price for Senior Gents. Please ask your hairdresser about it.*

**At Secrets.....** Having trouble getting/keeping warm? We have the cosiest microfiber rugs, thick warm flannelette sheets, wheat bags & throws to warm your toes at night.

Pure new wool jumpers & cardigans. Jackets, coats, ponchos, wraps, layering garments, thick leggings, trousers, scarves, gloves & beanies to keep you snug & warm during the day.

So there is no need to be cold.....

**Even if you are not a TM Hair Design client, we welcome you to “take a peek” at Secrets**

Look forward to seeing you very soon.

**Call in to 100 Vincent St, or phone 9646 1122.**

**WD & LM SLEEP  
BOBCAT**

**Specialising in**

**House tank and shed pads, laser level to engineered specifications, also bobcat site work, block cleanups and post hole digger.**



**M: 0429 461 314**

# Beverley Medical Practice

106 Forrest Street, Beverley WA 6304

PO Box 434, Beverley WA 6304

P | 08 9646 1241

Providing quality health care to the Beverley community and surrounding areas



## Doctors Availability

<b>Dr. Norah Kalibbala</b> Monday 9.00am - 4.00pm By appointment only	<b>Dr. Remi Adebayo</b> Tuesday 8.30am - 5.00pm By appointment only
<b>Dr. Olay Omomiyi</b> Monday 9.00am - 5.00pm Wednesday 9.00am - 5.00pm Thursday 9.00am - 5.00pm Friday 9.00am - 5.00pm By appointment only	<b>Dr. Esther Oladipo</b> Tuesday 9.00am - 5.00pm Wednesday 9.00am - 5.00pm By appointment only

## Practice Nurse - Wendy Steed

Monday and Wednesday 9.00am - 1.00pm  
 BP checks, vaccinations, counselling Health Assessments, wound care etc.

### Services available at the Beverley Medical Practice include:

- General Consultations and Care of Chronic Medical Problems
- Preventative Medicine and Medical Check-ups
- Women's Health and Family Planning
- Pre-employment, Drivers Licence and Medical Examinations
- Men's Health and Geriatric
- Shared Antenatal Care and Immunisation
- Travel Medicine and Vaccination
- Minor surgery including Biopsies and Cryotherapy.
- Pat forms
- Health Assessments.

### Allied health services provided in conjunction with Beverley Health Services and Wheatbelt GP Network include:

- Home and community care services
- Community child health nurse
- Aboriginal health worker
- OT for school and community
- Visiting Podiatry
- Optometrist
- Diabetic clinic
- Dietician
- Physiotherapist
- Nutritional Advice and Counselling Services.

### Results

Your doctor will advise when they expect your results to arrive at the practice. Please call reception to confirm your results are available and make an appointment to review them with your Doctor if needed.

### Home Medicine Review

Are you taking more than 12 doses of medication a day, experienced a change in your medical condition E.g. falls, cognition or physical function. Talk to your Doctor about a referral for a HMR (Home Medication Review)

### MY HEALTH RECORD - All you need to know - ([myhealthrecord.gov.au](http://myhealthrecord.gov.au))

**My Health record** is a new National digital health record system. Having a **My Health record** means your important health information like allergies, medical conditions and treatments, medicine details, test or scan reports can be digitally stored in one place. Your healthcare providers can see it online from anywhere at any time when they need to, this is especially helpful if you are involved in an accident or an emergency. For more information about how to register please ask our friendly receptionists.

### Fees and billing arrangements

Our practice is bulk billing all patients who hold a current Medicare card. Some procedures are not covered by Medicare and may be billed privately.

*These include: heavy vehicle medicals, pre-employment medicals and some dressings etc.*

For more information regarding fees please discuss with our receptionist prior to consult. You must present your Medicare card, Pension and other concession cards at every appointment. The Beverley Medical Practice is a private practice and therefore accounts are to be settled at the time of consultation by cash. All fees are charged at the doctors discretion. For more information visit our webpage <http://beverleymedical.wix.com>

### New afterhours care initiative

The WA Country Health Service, The WA department of health and the WA Primary Health Alliance are working with ReadyCare to trial an afterhours GP telemedicine service.

Where individuals call ReadyCare on 1800CALLADOC (1800225523)

Callers are screened for eligibility and asked for a summary of their condition to ensure their call is suitable for telemedicine.

A ReadyCare GP will call at their appointment time to provide care via phone or video

For more information [www.1800calladoc.com.au](http://www.1800calladoc.com.au)



### Care outside normal opening hours

When the Beverley Medical Practice is closed you can always get medical attention by calling ReadyCare 1800 225 523 or by attending the Beverley District Hospital, located in Sewell Street Beverley where experienced staff will triage the patient and contact the on call Doctor.

**For all Emergencies call 000.**



# BEVERLEY BRANCH of CWA



INVITES CWA MEMBERS and FRIENDS

to a FRIENDSHIP DAY

to be held at the LESSER HALL,

Vincent Street, Beverley

WEDNESDAY 10th AUGUST

Morning Tea 10.00am

3 GUEST SPEAKERS

followed by Light Lunch (all supplied)

Door Prizes, Raffles and Trading Table.

\$15.00

RSVP to Lorraine Sims by 3rd August

Email: [sims@agn.net.au](mailto:sims@agn.net.au) or phone: 9646 1243



## Country Womens Association

There was no CWA branch meeting in July but four members attended the state conference which was held at the Fremantle Sailing Club on 19 and 20 July.

This conference is the annual general meeting of the Country Women's Association. There was a very full programme and included some twenty nine motions for discussion and deliberation. There was also presentation of awards, announcement of all new Office Bearers for the Association and State Committees. Annual reports were printed in the CWA Annual which was previously distributed.

On the lighter side, there was the official opening, parade of branch banners, guest speakers, entertainment and a lot of catching up with friends from state wide.

August will be a very big month for us as we are to hold a Friendship Day open to all CWA Members and friends who would like to join us from Beverley and neighbouring towns. Please let us know if you would like to come along. All welcome.

We will be involved at the Beverley Show in various activities and we look forward to catching up with a lot of friends and families who may return to Beverley for the day.

The "Shoe Box" scheme is well under way with a goal of some 40 gift boxes packed with a variety of suitable gifts in each. Special thanks must go to Colleen Mearns for leading this project, Pat Alexander and others who have helped with the sewing and many thanks to those folk who have donated cash or goods and clothing items for this challenging event.

Sadly, it costs \$9.00 per box for transport/freight for these gifts to be delivered to underprivileged children in countries to the north of Australia. Each child will only once receive one of these boxes.

**Our next Branch meeting will be on Wednesday 17 August** at the CWA rooms at 10.00am for morning tea followed by a brief account of conference and short meeting.

A 'Bring And Share' lunch will follow as usual. Visitors are to be made most welcome at all times, please drop in and share some time with us.

Lorraine Sims - Branch Secretary

P | 9646 1243 or E | [sims@agn.net.au](mailto:sims@agn.net.au)



**BEVERLEY**

**PHOTOGRAPHY GROUP**

Thank you to all of our members that attended the workshop in July.

If you are a keen photographer and would like to know more information about our group please contact Colleen.

Contact Colleen Sleer  
P | 0408 319 022

E | [caugust@bigpond.com](mailto:caugust@bigpond.com)

*Thompson's Funeral & Monumental Services*  
(Established in 1993)

53 Avon Terrace, York  
Tel: 9641 1608

[www.thompsonsfuneralservices.com](http://www.thompsonsfuneralservices.com)

*"At Thompsons - we'll be there when you need us"*

Ask us about Water Corporation's free Showerhead Swap Program

Save up to 7,000 litres of water each year by swapping one showerhead for a new water efficient model - absolutely free!

Call into the Shire of Beverley office with your Water Corporation Account number & old showerhead to make the swap.

[watercorporation.com.au](http://watercorporation.com.au)

**VL VALENTI LAWYERS**  
PROPERTY & COMMERCIAL LAWYERS

**Valenti Lawyers** will be at the Quairading Community Resource Centre on Wednesday, 31 August 2016 from 10.00am to 5.00pm to take instructions in relation to estate and succession planning, property and commercial matters.

Any person wishing to obtain advice in any of these matters should contact our Kim Valenti's personal assistant, Simone Poor, on (08) 9224 6222 to arrange an appointment or feel free to call in on the day.

Please visit our website [www.valentilawyers.com.au](http://www.valentilawyers.com.au)

Level 2, 130 Royal Street, EAST PERTH WA 6004  
PO Box 6661, EAST PERTH WA 6892  
Tel: (08) 9224 6222 • Fax: (08) 9224 6288  
[www.valentilawyers.com.au](http://www.valentilawyers.com.au)

**E Squire Contracting Services**

Water Supply  
Windmills & Accessories  
Solar Pumps:  
Sales, Service, Installation  
Fencing & Yards  
Trenching & Poly Pipe Laying

**E Squire Contracting Services**  
Beverley and surrounding districts

**Phone: 9646 0800**

**Errol Squire 0438 682 687**

## THE JUDGES HANDY HINTS

These tips were given by Aileen Hickey from the CWA who was a well known instructor and show judge.

**Schedule:** Check the rules the judge has to judge according to the schedule, so you must enter according to the schedule e.g. 3 distinct varieties means 3 different varieties.

**Collection:** 2 or more is a collection.

**Preserves:** No manufacturers' names, trademarks, etc. on jars and lids. If painting lids, do so well ahead, say 12 months, to prevent paint smell. No rust inside lids. Clean and dust jars. To present for judging, do not use wet cloth to clean jars, use paper towel. The best thing for polishing jars is an old stocking.

**Jam:** Must be properly set. The jam must not move if you tip the jar of jam upside down. No bubbles in the jam. Labels should be in proportion to the jar, not wrapped around the whole jar. Place label 2/3 to 3/4 up jar, not at the bottom of the jar.

**Cakes:** Line tins properly. Prevent bubbles in the cake by mixing smoothly. No rack marks on top or bottom of cakes - this will lose points. If your cake cracks across the top it is usually because the mixture is too dry or oven temperature is not correct.

**Scones:** Scones should be uniform in size with even colour and no soggy. Dust those scones - no remains of raw flour allowed.

**Flowers:** Specimen: One only, no buds. Remove buds carefully. Bowl: Width is 1½ times height. Opening is half the width. A container is anything that is not a bowl.

Arrangements: Height - 1½ times above the vase. Present on a mat, doyley, etc.

**GOOD LUCK WITH YOUR ENTRIES.**

What's New  
Parts delivered daily  
from Northam  
to Beverley



Great String Specials  
Call us now with  
your string orders  
for hay season

Full workshop with two Ag specialist mechanics and also available for field repairs  
Hydraulic hoses made to order plus fittings, bearings and seals.  
Come and see Warren and Neil at the 2016 Beverley Ag Show

New Holland introduces a new range of Q-Net netwrap and twine which is now available from Geoff Perkins Farm Machinery. Don't pay through the nose this hay season for netwrap or twine. Pay a fair price for great European product—made in Portugal—by the world's leading manufacturer of agriculture netwrap & twine.

**PARTS SERVICE SALES**

**FREE DELIVERY WHEN ORDERING BY THE PALLET\***

\*Within a 100 km radius of store.

<p><b>HIGH DENSITY TWINE—2000M</b></p> <p>The Strongest HD twine ever</p> <ul style="list-style-type: none"> <li>For the newest generation of high density balers</li> <li>High knot stability</li> <li>High UV stabilisation for Australian conditions</li> <li>Bales over 750kg</li> </ul> <p>295kg Knot Strength</p> <p><b>\$117.12</b></p> <p>Part Number: 73322531</p>	<p><b>NEW HOLLAND Smart REWARDS</b></p> <p>Earn 3 Points every \$1 spent!</p> <p>3 Easy Steps</p> <ol style="list-style-type: none"> <li>1. Call Geoff Perkins Machinery to register.</li> <li>2. Purchase qualifying parts from Geoff Perkins Farm Machinery, pay on time and receive 3 New Holland Smart Reward points for every dollar spent.</li> <li>3. Use your New Holland Smart Reward</li> </ol>	<p><b>SMALL SQUARE TWINE—4480M</b></p> <p>Performance, consistency and high quality</p> <ul style="list-style-type: none"> <li>High UV stabilisation for Australian conditions</li> <li>Easy feed spool</li> <li>Consistent twisting and twining shape throughout the spool</li> </ul> <p>81kg Knot Strength</p> <p><b>\$75.56</b></p> <p>Part Number: 73322572</p>	<p><b>Q-NET NETWRAP—3300M</b></p> <p>Full bale Coverage</p> <p><b>\$349.27</b></p> <ul style="list-style-type: none"> <li>23 x 3300m</li> <li>High tenacity and high strength</li> <li>Wear resistant cardboard tube</li> <li>High UV stabilisation for Australian conditions</li> <li>Red end warning system</li> <li>Consistent operational performance across all known round balers</li> </ul> <p>Part Number: 73322221</p>
<p><b>HERCULES HIGH DENSITY - 2200M</b></p> <p>Developed in Australia to cater for the new generation 'High Density' large square balers</p> <ul style="list-style-type: none"> <li>High UV stabilisation for Australian conditions</li> <li>Maximum strength—Strongest twine in the Tapes range</li> <li>Bales over 750kg</li> </ul> <p>240kg Knot Strength</p> <p><b>\$119.13</b></p> <p>Part Number: 73322507</p>	<p><b>LARGE SQUARE TWINE—2200M</b></p> <p>Developed for Australian conditions</p> <ul style="list-style-type: none"> <li>Recommended for New Holland large square balers</li> <li>High UV stabilisation for Australian conditions</li> <li>Trouble free spooling</li> <li>Consistent twisting and twining shape throughout the spool</li> </ul> <p>192kg Knot Strength</p> <p><b>\$112.93</b></p> <p>Part Number: 73322579</p>	<p><b>SMALL SQUARE TWINE—4000M</b></p> <p>When performance, consistency and high quality are demanded</p> <ul style="list-style-type: none"> <li>Easy feed spool</li> <li>Recommended for New Holland small square balers</li> <li>High UV stabilisation for Australian conditions</li> <li>Consistent twisting and twining shape throughout the spool</li> </ul> <p>75kg Knot Strength</p> <p><b>\$98.15</b></p> <p>Part Number: 73322578</p>	<p><b>PREMIER INFINET—3600M</b></p> <p>Guaranteed performance bale after bale</p> <p><b>\$478.43</b></p> <ul style="list-style-type: none"> <li>23 x 3600m</li> <li>Leading brand—Leading manufacturer</li> <li>World leading technology</li> <li>Patented 'Edge to Edge' technology</li> <li>Red end warning</li> <li>High strength net</li> <li>Fits round balers</li> <li>Fully supported in the field</li> </ul> <p>Part Number: 73322111</p>

Prices valid till 30/09/2016 and only will stocks last. No rainchecks. All prices exclude GST. Further discount available on bulk/pallet orders. See in store for more details.

Sales   Warren Hunt M   0428 222 888 E   warren.h@gpfm.com.au	Service & Admin   Debbie White P   9622 2888 E   debbiwhite@gpfm.com.au	Parts   Neil Moulton M   0428 069 454 E   neil.m@gpfm.com.au
---	---	--

64 Old York Road, Northam WA 6401  
P | 08 9622 2888 E | adminn@gpfm.com.au  
www.perkinsmachinery.com.au



## THE RED VAULT

**RESTAURANT/COFFEE HOUSE**

**Thursday 11am - 10pm**

**Friday - Sunday 9am - 10pm**

**CALL 9646 0008 115 VINCENT ST BEVERLEY**

**LUNCHEON MEALS \$15.00 EVERYDAY**

**We make fantastic burgers and fish & chips**

**Hot Baine food Saturdays and Sundays**

**DINE IN AND TAKE-AWAY**

**.....GREAT COFFEE and CAKE .....**

**“Not just a special occasion place”**

**KITCHEN OPEN TIL 8:30 pm DAILY**

**AFFORDABLE PRICES..... ALL WELCOME**



## THE BLUE LINE

Beverley Police Station

57 Hunt Road, Beverley WA 6304 BeverleyPol@twitter.com

Phone: 9646 3333 Crime Stoppers: 1800 333 000

Hello Everyone,

First and foremost THANK YOU!

We had a great response to our Coffee with a Copper at the Beverley CRC; I really appreciated the effort made by those that attended on such a bitterly cold winter's day.

There was a beautiful and generous morning tea provided by Glenys and Amor and I thoroughly enjoyed the opportunity to meet and chat in an informal environment.

We also had a great response to the re-launch of ewatch and although the weather was against them, Megan and Jenny from our community engagement division braved the cold to meet with a number of business owners and members of the public. For those of you who have not yet subscribed I encourage you to jump on line and go to [www.ewatch.com.au](http://www.ewatch.com.au) If you wish to know more about signing up and what it's all about don't hesitate to ask us.

It is also good to see the number of information reports we have received from Crimestoppers. It is a good indication that this community care about safety and security and are actively ensuring we are made aware of suspicious behaviour and activity in the district.

On a more formal note I'd like to talk about WA Police and our Traffic Enforcement Strategy. Sadly the Wheatbelt district has the highest road crash fatality rate in our state and so in an effort for you to understand what we do and more importantly why I encourage you to take the time to read the following:- Targeting unsafe road-user behaviour is one of the key priorities for WA Police and plays an essential role in minimising the number of people killed and seriously injured on our roads.

Our traffic enforcement activities focus on:- Speeding (excess of posted speed limits), Anti-social road user behaviour (careless, reckless and dangerous driving), **Non-use of restraints (seatbelts, helmets and other restraints)**, Impaired Driving (drug and alcohol affected driving), Driver inattention (illegal use of technology and distracting practices), No authority to drive (driving without or an inappropriate licence) and Vulnerable road users (high risk behaviours of pedestrians, motorcyclists and cyclists).

Non-use of restraints (seatbelts, helmets and other restraints) is in bold as it is our monthly theme for August. Wearing a seatbelt is fundamental in mitigating any injuries in a crash and reduces the chance of being killed in a road crash. WA Police will use traffic stops as educational opportunities and apply a zero tolerance enforcement approach to non-compliance, in other words, you will be issued a traffic infringement. In 2014, 31% of the vehicle occupants killed in fatal crashes were not wearing an appropriate restraint at the time of the crash.

Failure of a driver of a motor vehicle to wear a seatbelt will cost you \$550 and 4 demerit points. A passenger 16 years or older who fails to wear a seatbelt will cost the same. So remember to buckle up and stay safe.

On a lighter note, I am looking forward to seeing you at the annual Beverley Agriculture Show on the 20 August. We will be at the RAC display and have organised for a special appearance by Constable Care. Let's hope the weather is kind to us.

Take care, stay safe.  
Sergeant Karen Berry.



### **Avondale – The Future?**

National Trust WA proposes to hold a community engagement session later in 2016 to ascertain interest and future expectations for Avondale. The Shire is assisting in this process.

The following comprises of extracts from the 2011 Avondale Masterplan Executive Summary. “Avondale is a mixed farm of 710 hectares in the Western Australian Wheatbelt near the town Beverley. The property is of State significance and is a Permanent Entry on the State Register of Heritage Places. In 2009, following a decision by the Department of Agriculture and Food (DAF) to divest itself of the property, which had been operated as a working agricultural research station, management of Avondale was transferred to the National Trust WA (NTWA) to keep it in public ownership, retain public access and conserve the cultural heritage values of the place (historic, natural and indigenous) in partnership with the local community.”

A Masterplan Project Steering Committee, comprising of two representatives from Avondale Farm Project Association (AFPA), Shire of Beverley and local Indigenous Elders together with ex-officio members from NTWA, Wheatbelt Development Commission (WDC) and Avondale Project Officers assisting in the DAF – NTWA transition, was established with the aim to set out a programme for the management of Avondale as a sustainable project and make significant economic and social contributions to the local and regional community in the post DAF era of existence. Although implementation has been slow and challenging, many projects have been undertaken and there is considerable resource to draw upon though existing conservation and interpretation plans.

NTWA considers that the 2011 Avondale Masterplan is still a relevant document. Attached is a table of “Proposed Works and Activities for Avondale” from the Masterplan. A date for the community engagement session is yet to be advised.

#### Enquiries

Dee Ridgway, President Shire of Beverley – H 9646 4054 / M 0428 464 007

Jo Johnson, President AFPA – M 0417 951 513

## BEVERLEY PLAYGROUP

**For:** 0-4 year olds & their parents/carers

**Where:** MOASH Building at the school (Lennard St)

**When:** Every Thursday (except public & school holidays)

**Time:** 9.30 – 11.30am

**Cost:** Weekly Fee – \$4 per family... and  
Playgroup WA membership & Insurance – Annual Fee

\$15 – concession card holders

\$30 – non-concession card holders

**Bring:** A piece of fruit to share, hat & sunscreen

New members always welcome!!

More Info: President – Hollie 0409 299 089





## PROPOSED WORKS AND ACTIVITIES FOR AVONDALE – 2011 Avondale Masterplan





ITEM	RATIONALE	PRIORITY
		H=High M=Medium L=Low
<p>Assessment of significance for the place as outlined in the Conservation Plan (CP) should be the basis for the conservation and planning of Avondale.</p> <p>The policies recommended in the CP should be used as a guide to future work.</p> <p>Principles and processes of the Burra Charter should be used to inform decisions relating to the conservation of the place.</p>	<p>The CP is the guiding document for the conservation of cultural heritage significance and as such the managers of the place are obliged to consider the policies and recommendations contained in it for any proposed works or management initiatives that would impact on significance</p> <p><i>Generally there is no unmanageable conflict between the CP and proposals put forward for consideration</i></p>	H
Continue active farming operation at Avondale (format of operation to be determined)	Considered essential to conserve the significance of the place and to enable educational and tourism programmes to proceed	H
Improve the museum machinery display (see also Farm Machinery Museum below)	Museum is a major tourism drawcard, community focus and has great educational potential	H
Relocate the museum and combine with new site entrance building and carpark as recommended in IP	Considered to be a very long term objective	L
Employ mechanic to maintain/improve machinery collection, provide training in partnership with educational institution, operate private business.	Not considered economically viable as a stand alone initiative, incorporate this in scope of work for major restructure of Machinery museum (below) .	M
Conserve and interpret historic buildings, retain and maintain contemporary operational farm buildings and settings. Priority determined by condition See below for more detail	Combination of historic and contemporary farm buildings is an important tourism and educational asset. Condition, presentation and accessibility require improvement	H -M
Improve public access (roads, carparks, paths) and facilities (toilets, picnic area, playground)	Improve facilities to attract greater visitation and meet acceptable standards of access and convenience	H
Establish public access control point	Improve overall site management and safety and facilitate income collection for visitation	H
<p>Continue existing programme of organised "special events"</p> <ul style="list-style-type: none"> <li>• Avondale Harvest Festival</li> <li>• Easter holiday period</li> <li>• Australian Working Dogs Championship</li> <li>• Clydesdale Ploughing Day</li> <li>• Vintage Truck Muster</li> </ul>	<p>Special events are a major tourism drawcard, community focus and educational vehicle.</p> <p>If properly managed, special events are an important income stream. Co-ordinate with other local and regional events to maximize community cross-benefit</p>	H



Images from the  
2012 Harvest Festival



## PROPOSED WORKS AND ACTIVITIES FOR AVONDALE - 2011 Avondale Masterplan

Identify, develop and present new special events	New events required to increase visitation and income and maintain the appeal of Avondale to the local community and regular visitors	H- M
Develop educational programmes for contemporary farming, farming history with reference to collections of buildings and settings, and machinery museum, natural environment and its integration with the farm, Aboriginal heritage and culture	In addition to special events, educational programmes will increase visitation/income and the overall value of Avondale to the broader community. Can be formal (eg tied in to school curricula) and informal (organised and self-guided tours for visitors). Covers European and Aboriginal cultural heritage, knowledge and practice	M
Develop the interpretation plan and implement interpretation works and programmes for contemporary farming, farming history with reference to collections of buildings and settings, and machinery museum, natural environment and its integration with the farm, Aboriginal heritage and culture	High quality interpretation is the key to enhancing visitors' enjoyment and understanding of the place	H
Develop short term accommodation ("bunkhouse') for school/ other groups (corporate teams, etc)	Would create synergies with educational programmes, but relevant experience elsewhere indicates unlikely to be commercially viable	L
<p>Programme of works to enhance flora and fauna values in the bush reserve and green links Priority of work dependent on funding.</p> <ul style="list-style-type: none"> <li> establish community based committee</li> <li> appoint project officer</li> <li> seek partnerships and grants</li> <li> undertake works to encourage community participation</li> </ul>	Considered very important to conserve natural heritage values, for overall management of Avondale as a showcase of integrated farming and to enable educational and tourism programmes to proceed	H-M
Incorporate Aboriginal cultural knowledge in flora and fauna works and management	To engage Aboriginal community in activities at Avondale, create opportunities for enhanced educational and tourism programmes based on Aboriginal cultural knowledge for the social and economic benefit of all stakeholders	H
Develop trails in conjunction with bush reserve and green links	Trails suitable for recreational use (walking, cycling) in appropriate areas will increase educational value and visitation	M
Develop training programmes for flora and fauna management, including on-site nursery	Training provides direct community benefit. Nursery may provide a modest income stream from sale of plants	M
Develop training programmes for farm and land management.	Training provides direct community benefit.	M
Develop small scale, self-funding business opportunities by the Aboriginal community with training component utilising resources at	Strengthens community focus, provides economic and social benefits to the community, provides	H-M

Landcare Resource Centre	Renovate to accommodate community uses (including existing quilters group) and as lecture/meeting rooms for the community and tour groups Interpretation, education and tourism benefits	M
Farm Machinery Museum (see also above)	Museum is a major visitor drawcard and point of Difference for Avondale. Major restructure of exhibition to improve presentation/visitation. Adapt building to include modest visitor facilities and shop. Add storage shed and workshop to improve presentation of the place, conservation of machinery and facilitate volunteer activity. Possible relocation to new site not considered economically viable in short to medium term.	H

Images below are from Avondale Ploughing Days in 2010



**PONY RESTORATION**  
ALL CLASSIC CAR RESTORATION

No Job Too Big or Too Small  
**30 YEAR'S EXPERIENCE**  
Repairers Ticket MR1637 • WESTDALE

**CONTACT RAY 0447 274 851**  
**KERRY 0429 169 794**

TA1825925

**Dead Finish Museum**  
*A collection of historical memorabilia*

*Open Sundays 11am to 3pm*  
*March to November*

**PURSLOWE TINETTI FUNERALS .com**

*Cremations & Burials*  
*Country or City*  
*Pre-paid Funerals*

**Call the Tinetti Family**  
**9622 1411**

*Arranged in your home or*  
*264 Fitzgerald St Northam*

AUSTRALIAN FUNERAL DIRECTORS ASSOCIATION

# Beverley Earthmoving Contractors

40 years experience in all aspects of Earthmoving.

## One stop shop for all your Septic Systems.

Supply & Install  
Plumbing Licence PL 5829 Gas Fitting Licence GF 7422

### **ALL ASPECTS OF EARTHMOVING**

House Pads Site Cuts

Block Clearing Laser Levelling

Service Trenches

To Shire and engineer specifications.

### **SAND SUPPLIES**

Metal Gravel

### **BULK HAULAGE**

Truck and Dog Trailer Backhoe 315 SE John Deere

Side Shift Extender Hoe

Bob Cat Loader

Forklift Post Hole Borer

General Freight in-gage and over width loads credited.

**Phone:**  
**Ron 0429 088 689**

## **ONSITE REPAIRS AND SERVICES**

We are back in town.

Repairs for all of your Earthmoving, Plant,  
Agricultural and Transport Equipment.

We are able to access most computers.

Phone Karl Morrell on 0417 998 549

Email: [onsiterepairs@bigpond.com](mailto:onsiterepairs@bigpond.com)



Hon Mia Davies MLA  
MEMBER FOR CENTRAL WHEATBELT

**iNATIONALS**  
for Regional WA

Media Release 22 July 2016

## **Country Age Pension Fuel Card boosted in 2016**

Member for Central Wheatbelt Mia Davies MLA is pleased the value of Country Aged Pension Fuel Cards has increased to \$575 for regional pensioners in her electorate.

Ms Davies said the Royalties for Regions investment, announced as part of the 2016-17 State Budget, would help pensioners remain mobile and independent by supporting access to transport options.

“The Country Age Pension Fuel Card plays an important role assisting regional pensioners, including age pensioners and people with disabilities, remain independent through the purchase of fuel and taxi services,” Ms Davies said.

“Many regional pensioners travel long distances to access medical and health services and I’m proud that Royalties for Regions is assisting with these travel costs.”

Existing cardholders will automatically be issued a new card this month, provided they continue to meet the eligibility criteria. The value loaded onto cards will increase from \$565 to \$575 from 1 July 2016.

To be eligible for a fuel card, applicants must live in an eligible regional location in WA and receive a Centrelink Age Pension, Carer Payment, Disability Support Pension, Wife Pension or Widow B Pension, or a Department of Veterans’ Affairs Service Pension, Social Security Age pension or Income Support Supplement.

Since 2008, the State Government through the Royalties for Regions program has invested a total of \$158 million to fund the Country Age Pension Fuel Card Scheme and another \$140.1 million will be invested over the next four years.

The State Government is investing



Hon Mia Davies MLA  
MEMBER FOR CENTRAL WHEATBELT

**INATIONALS**  
for Regional WA

\$3.78 billion over the next four years to build vibrant regions with strong economies through Royalties for Regions initiatives in health, community services, education, arts, Aboriginal development initiatives, agriculture, tourism and economic development.

New applicants may apply by presenting a current Pensioner Concession Card and lodging a form at a participating country Post Office.

To find the nearest participating Post Office applicants can call the Fuel Card Information Line on 1300 666 609.

*For media enquiries please contact Mia Davies MLA*

*9041 1702 (Merredin Office),*

*9622 2871 (Northam office) or*

*email [mia.davies@mp.wa.gov.au](mailto:mia.davies@mp.wa.gov.au)*

### COUNTRY LINE DANCING



*Thursday's  
9.30am - 12.00pm*

*At the Beverley  
Town Hall*

*Enquires:  
Jill 9646 0283*

### ROYAL ANTEDILUVIAN ORDER OF BUFFALOES



GLE (Inc)  
QUAIRADING BEVERLEY NO.163

We meet the first Wednesday of every month at the Masonic Lodge, Hunt Road, Beverley

*The objects of our order are  
Philanthropy and Good Fellowship.*

For more info contact  
Tom 0419 945 240

## WILLS AND ENDURING POWERS OF ATTORNEY

A friendly service for York, Beverley and Quairading.

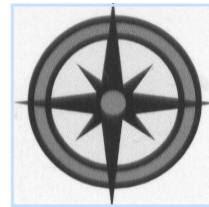
John will come to your house or farm.

**JOHN MULLER LLB  
SOLICITOR**

**0419 899 779**

Email: [mullja@bigpond.com](mailto:mullja@bigpond.com)

All types



All areas

## ALLROUND CONCRETE

SHED FLOORS, DRIVEWAYS, FOOTPATHS, HOUSE SLABS,  
SILO PADS, FERTILIZER/GRAIN/SUPA SHEDS

**ROBBIE HIGGINSON**

**MOBILE: 0427 384 977**

**HOME: 9641 2459 FAX: 9641 2339**

ABN: 26 997 512 874

PO BOX 345 YORK WA 6302



Travelling Overseas or around Australia?

To book a holiday of a lifetime

Contact your local travel professional

Catherine Riches

Tel: (61)8 9647-2173 Email: [broker3@bigpond.com](mailto:broker3@bigpond.com)  
Travel Associates Australia Pty Ltd - Licence Nbr:9TA1188  
Member of Travelscene American Express



## CARPET & LOUNGE SUITE CLEANING

*It's Spring Cleaning Time!*

- \* Carpets Cleaned
- \* Lounge Suites Cleaned Like New
- \* Car Upholstery & Carpets Cleaned
- \* House Total Clean When Moving
- \* Fire & Water Damage Clean Up

- \* Stripping & Sealing Floors
- \* Vinyl
- \* Wood
- \* Slate

Phone Colin Today on  
0417 971 786

Email [colgrant1@bigpond.com](mailto:colgrant1@bigpond.com)



In the Lesser Hall  
**CYCLE CLUB**

# Grand Dance

Wednesday, Aug 17

## Parents' & Citizens' Association

A special meeting will be held on Saturday next, 13th August, at the school at 2.30 p.m., to finalise all arrangements for the Children's Ball.

E. W. Edwards  
President

### Bereavement Notice

Mr. and Mrs. E. J. Jones and Mr. and Mrs. Andrew Strange desire to express their sincere and heartfelt THANKS to all friends for kind acts and expressions of sympathy during their recent sad bereavement, especially do they wish to thank Mr. Alan McCallum.

### Church Notices

#### CHURCH OF ENGLAND

Sunday, August 14  
8 a.m.—Holy Communion, Beverley  
9.45 a.m.—Sunday School Beverley  
11 a.m. Holy Communion, Beverley  
7.30 p.m.—Evensong, Brookton  
W. B. CHURCHILL, Rector

#### METHODIST CHURCH

Sunday, August 14  
10.15 a.m.—Beverley Sunday school  
11 a.m. Brookton.  
3 p.m.—Bally Bally.  
7.30 p.m. Beverley  
L. KING, Minister.

### THE BEVERLEY TIMES

FRIDAY, AUGUST 12

### LOCAL and GENERAL

**OURSELVES**—Due to the incidence of the seasonal ailment amongst both management and staff at this office this week's issue of "The Beverley Times" is being produced under extreme difficulty and we would crave our readers indulgence in regard to its shortcomings. An endeavour will be made to catch up with local affairs in next issue.

**PALTRY ACTION**—The police have been asked to investigate a paltry action on somebody's part perpetrated a few days ago. It consisted of digging up and removing a number of ornamental trees purchased and planted by Mr Jack Jefford near the saleyards in Forrest Street. Apparently the person responsible has the idea that the trees will look better in his own garden.

### Long or Sawn Firewood

See  
**LES ELLIS**

Who has several tons on hand and can supply immediately  
All Classes of

### Carrying & contract work

Messages may be left with Steve Edwards. Truck BE375

### Mostly Personal

Chief Petty-officer A N Cooper of the RAN was in town yesterday in furtherance of the Navy's search for recruits. He went on to Pingelly in the afternoon.

Following a sudden collapse in the street the death occurred at Fremantle recently of Mrs J McCloud, at the age of 69 years. She was the mother of Mrs A Strange and Mrs E J Jones, of West Dale.

It was announced last week-end that Mr W R Gillespie had been endorsed as a Liberal and Country League candidate for the Canning Seat in the House of Representatives, the seat at present held by Mr L W Hamilton, MHR. Previously Mr Bob Adamson had received the Party's endorsement for the seat but ill-health has caused him to withdraw. This is Mr Gillespie's first venture into the political arena but no doubt he has been conditioned to that end by his keen interest in political matters of late and his enthusiastic furtherance of the LOL with which he has been associated since its inception. He is a vice president of the organisation.

### GOLF

The Craig Cup contest at York on Sunday attracted a record field and was won by L Hadlow of Quairading with L Grieves, of York as runnerup. Joe Wansbrough (Beverley) won the new and handsome scratch score trophy, whilst veteran Harry Walker (Quairading) figured among the minor prize-winners.

#### Women's Championship

Mrs. J L McGowan is again the winner of the associates championship -- an honour to which she is not unaccustomed. The plate event went to Miss D Broun

#### Next Sunday

The week-end fixture is the final of the men's championship and plate over 36 holes. The O T Broun trophy will also be contested.

### FOOTBALL

#### Sunday's Teams

The following teams have been selected to represent Beverley against Federals at Beverley next Sunday:

A grade—E Paulsen, C Grover K, W and F Blechynden, R Fairhead, J Manuel, N Johnson, C McLean, C Smith, H Paulson, A and J Sing, J Shackles, T Jefferies, J Hastings, C Cooper, P Nicholson, P Grover, C Carr, R Sing, D Bowden

B grade—R Ferguson W Wansbrough, E McLean, O, A, L and R Smith, J Savage, B Shackles, B Steer, B Halbert, R McCloy, R Fisher, F Woods, B Ferguson, E Robins, M and S Boyle, D Moulton, R Strange, T and C Ridgway, B and H Kempton, R McCloy.

Any player not able to play please notify the secretary.

### FERGUSON BROS.

#### Haulage Contractors

Phone—Residence 63  
Office—At Mr W R Williams' premises

#### WOODYARD

Also

#### Dale River Transport

Truck leaves Beverley 6 a.m. each Friday, returning same day  
PERTH—FREMANTLE

### Death Hits Beside Every Reckless Driver

"Publicizing the total of motor ing deaths and injuries never succeeds in jarring the motorist into a realization of the appalling risks of motoring," declares J C Faunas in the Reader's Digest for August. "He does not translate dry statistics into a reality of blood and agony."

A passing look at a bad smash or the news that the fellow you had lunch with last week is in the hospital with a broken back will make most drivers temporarily cautious. But what is needed, to curb the mounting wave of highway casualties, Faunas urges, "is a vivid and sustained realization that every time you step on the throttle death gets in beside you hopefully waiting for his chance."

The author proceeds to give his readers the "vivid and sustained realization" they would get by witnessing a bad crash—such as happens every day—or by being, themselves, victims of such a crash. Faunas' article, first published in 1935 in the United States, "succeeded as no other writing ever has," the Digest says editorially, "in stirring a realization of the traffic accident problem. In the six years that followed, the fatality rate was reduced one third."

A sample of the writing that shocked millions of American motorists into an awareness of

the result of reckless driving is the paragraph below, written from the point of view of an accident victim. It is not scare fiction, Faunas says, but merely the raw material of the year's statistics as seen in the daily course of duty by policemen and doctors:

"It's hard to find a surviving accident victim who can bear to talk. After you come to, the gnawing, searing pain throughout your body is accounted for by learning that you have both collarbones smashed, both shoulder blades splintered, your right arm broken in three places and three ribs cracked, with every chance of bad internal ruptures. But the pain can't distract you as the shock begins to wear off, from realizing that you are probably on your way out. You can't forget that, not even when they shift you from the ground to the stretcher and your broken ribs bite into your lungs and the sharp ends of your collarbones slide over to stab deep into each side of your screaming throat. When you've stopped screaming, it all comes back—you're dying and you hate yourself for it..."

"Take a look at yourself" Faunas concludes, "as the man in the white jacket shakes his head over you, tells the boys with the stretcher not to bother and turns away to somebody who isn't quite dead yet. And then take it easy."

## BEVERLEY PICTURES.

Saturday, August 20

Commencing at 8 p.m.

### Maria Montez, Rod Cameron "Pirates of Monterey"

Dana Andrews, Brian Donlevy, Susan Hayward  
"Canyon Passage"

#### TO-MORROW NIGHT

"The Time, The Place and The Girl" and "The Verdict"



NO matter which occupation you follow, business girl, executive, housewife or factory worker, you can save yourself time, energy and inconvenience by using a Commonwealth Bank Cheque Account. Just a few strokes of your pen and your bills are paid. No need to keep large sums of money in your purse or in the house. No need to make a trip to the Bank or Post Office when you require money or wish to send it away. Don't be embarrassed by confessing you haven't the money with you. Carry a Commonwealth Bank Cheque Book.

### Commonwealth Bank of Australia.

Every Branch of the Bank conducts Savings Bank Business.

C.O. 11-49

BEVERLEY BOWLING CLUB'S

# QUIZ NIGHT

**SMART? Then prove it smarty pants!**

EVERYONE WELCOME  
TABLE BOOKINGS ESSENTIAL  
\$80 A TABLE OR  
\$15 EACH (WE'LL MAKE UP TABLE)  
FULL BAR FACILITIES AVAILABLE



BEVERLEY BOWLING CLUB, FORREST ST

DATE: FRIDAY 12 AUGUST 2016

START TIME: 7:00PM

BYO NIBBLES

DON'T MISS OUT

ENQUIRIES - 0438 972 335

KARRADALE LIVESTOCK TRANSPORT  
YORK LIVESTOCK TRANSPORT  
ABN 64 054 007 721

We service Beverley, Brookton, York  
& surrounding districts

Available to transport Sheep & Cattle

No job too big or small

Support the local communities

Member of ALRTA

If you need stock moved, Peter would love to  
hear from you - 0428 481 281



### Canasta - Samba

If you are interested please come along  
to the CWA hall on Saturday afternoons  
at 1.00pm. Enquiries 9646 0457

# Countryside Memorials

Cast Stone

Granite

Marble

Plaques

Added Inscriptions

All Repairs and Restorations



25 YEARS PROFESSIONAL EXPERIENCE  
FREE DESIGN AND QUOTE

Servicing All W.A. Country Areas

**9622 5544**

**OXTER SERVICES**

[www.oxter.com.au](http://www.oxter.com.au)

[oxter@westnet.com.au](mailto:oxter@westnet.com.au)



**BEVERLEY ELECTRICAL SERVICES**

Servicing Beverley, Quairading  
and Brookton

For all your Electrical & Solar needs  
Please call

**KARL SMITH**

**0429 887 535**

PO Box 2 Beverley WA 6304

Email [sales@beverleyelectrical.com.au](mailto:sales@beverleyelectrical.com.au)

EC 006578

ABN 52 164 525 3586

### BRIDGE - Card Game

If you would like to come along and  
enjoy a game of bridge.  
We welcome all new members to join us.  
**WHEN: Mondays TIME: 1.00pm WHERE: CWA Hall**



**NEED PRACTICAL TRADE ASSISTANCE?**

## *D & M Services*

(Design and Manufacturing Services)

Solving a range of practical needs and problems..

**Specialising in:**

- ✓ Kitchen renovations
- ✓ Shop fitting and modifications
- ✓ Furniture restoration
- ✓ General carpentry
- ✓ Alterations & installations
- ✓ Metal based fabrication
- ✓ Motorhome and Caravan fitouts
- ✓ Pergolas, Decks & Gazebos
- ✓ Designing and planning

**Guy Slingerland**

**0403602335**



**No one expects a spinal cord injury. Yet every day, someone, somewhere in Australia, sustains this life changing injury.**



Easing the impact

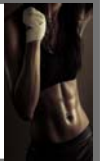
PBF Australia are delighted to be attending the 'safe road to Beverley' Agricultural Show on Saturday 20th August – please come and say hello!

In the week before the show our experienced presenters, who have all sustained a life changing permanent injury, will be available to deliver road or workplace injury prevention presentations in Beverley and the surrounding areas. Ideal for all sporting clubs, community groups and workplaces who care about safety.

**Interested in learning more or joining PBF? Want to book a presentation?** Call **1800 809 780** or visit [www.pbf.asn.au](http://www.pbf.asn.au)

### GYM MEMBERSHIPS

Get your summer body in shape before it's too late, now is the perfect time to get your gym membership. Available now from the Shire of Beverley office.



# **Dawson's Concrete & Reinforcing**

**“Your Local Beverley Concreter”**

- Concrete Formwork & Steel Fixing
- Driveways, Shed floors, Maintenance pits, Silo pads, Super sheds, House pads
- Fully mobile service
- Over 30 Years Experience
- 7 Days A Week
- Professional, Reliable Service

*Phone for a Free Quote*

**SANDY DAWSON**  
**Mobile: 0417 375 221**  
Email: [pameladawson@bigpond.com](mailto:pameladawson@bigpond.com)

## Alcohol: Take time to consider your drinking behaviours

Last month was “Dry July”, which gave us a chance to focus on ourselves, our drinking habits and the importance of a healthy balanced lifestyle. Speaking with a group of blokes about this, I asked them to have a think about their attitudes towards drinking which one bloke replied “I just love the taste”. This is a fair enough response, and it’s also the same problem I have with my kids, who love ice cream and chocolate, but trying to teach them that you don’t have it every day takes effort.

The fact that going alcohol free for a month is seen as a challenge for many, highlights just how prevalent alcohol use is in Australia. Alcohol is our most widely used and most accepted drug, and over time it has formed part of our Aussie culture and identity. Its use and associations are many, including: advertising, sport, social occasions, celebrations and within the work place culture. Peer pressure does not only happen to teenagers! Think of the last time you were encouraged to have a drink when you **were not** planning to? As *Joe E. Lewis* once quoted “*I distrust camels, and anyone else who can go a week without a drink.*” There seems to be an underlying normalisation, glamorisation and justification for drinking which is also present in pop-culture, movies (The Hangover), social media (my “friend” who posts it’s beer o’clock).

Now I am not saying I’m a shining light leading by example when it comes to abstaining from having a drink, my arm is often twisted a bit too easy. We should all take the chance to have a think about our own individual drinking habits, behaviours and attitudes:-

- What example do I set when I drink?
- How often/how much am I drinking?
- Is it to relax, cope or deal with stress?
- Is it habitual or become a dependency?

For those who do enjoy a night out, here are a few points to help reduce unhealthy drinking behaviours:

- What mood/state of mind am I in before I drink? Alcohol is a depressant, but can also enhance negative behaviours e.g. anger/aggression, reckless risk taking;
- What sort of situation/crowd am I drinking with? Young people, personal safety e.g. am I with people I know and trust in a safe environment or am I out with randoms?
- Self regulation - know your limits and plan ahead. Designated driver, take a swag, don’t risk it!
- Harm minimisation. Have a decent meal, serve finger food, alcohol dehydrates (drink water);
- Alcohol Free days. 2-3 days per week will show two benefits 1. I can go without a drink. 2. Has regenerative effects on the liver (health benefits).

During this year’s seemingly endless election outcome result I saw this creative post showing a picture of our politicians with the caption “**No matter who wins they will not fix your life, better plan on doing it yourself**”. Like a lot of things in life and especially alcohol we can’t expect governments and multimillion dollar ad campaigns to reduce the risk, control our use and fix alcohol related problems. Moderation, awareness, responsibility and balance is the key to our alcohol use.

Terry and the Team  
The Regional Men’s Health Initiative  
delivered by Wheatbelt Men’s Health (Inc.)  
PO Box 768, Northam WA 6401  
Phone: 08 9690 2277  
Email: [menshealth@4blokes.com.au](mailto:menshealth@4blokes.com.au)  
[www.regionalmenshealth.com.au](http://www.regionalmenshealth.com.au)



## WESTDALE MECHANICAL

T/A R.L. & T.L. TAMBLYN - ABN 106 854 06

### -SERVICING-REPAIRS-WELDING-TYRES-

- \* Workshop in Westdale or on site mobile service
- \* 23 years diesel earthmoving experience
- \* Earthmoving machinery
- \* Farm vehicles and machinery
- \* Quad bikes and motorcycles
- \* Small motors of any description
- \* Welding and fabricating
- \* Supply of Chinese earthmover, tractor, truck, trailer, 4wd, forklift, performance and car tyres

“if you need a bulldozer track changed or a motorcycle or chainsaw serviced and tuned”

**Please call Ricky 0419 903 829**

## WESTDALE TIMBER

T/A R.L. & T.L. TAMBLYN  
ABN 106 854 06

### LOGS WANTED - TIMBER SLAB SALES

- \* Save large tree trunks from the chipper or cropping clean up fire
- \* Jarrah, Red gum/Marri, Sheoak, Blackbutt, Karri, White gums/Wandoo
- \* 350mm and larger tree trunks/logs wanted dead or alive
- \* Standing dead or storm windfall tree trunks removed
- \* Leaving the branches to be pushed onto stumps for easy burning/clean up.

**Please call Ricky 0419 903 829**

## ARCHITECT AT LARGE

Appointments 0429 421 287  
[rpecheva@rpearchitect.com.au](mailto:rpecheva@rpearchitect.com.au)  
[www.rpearchitect.com.au](http://www.rpearchitect.com.au)

New Houses | Additions & Alterations  
Live Your Dream Life | Love Where You Live

Professional Expertise & Personalised Service  
Accredited Design in the Central Wheatbelt

Rosalie  
Pech Eva  
Architect



**SUNDAY**

8.00 - 11.00 Sunday Morning Coming Down – John  
12.00 – 1.00 Soul & Inspiration - Susan  
4.30 - 9:00 Metamorphosis – Bob

**MONDAY**

6.00 – 10.00 Monday Breakfast - Bob  
10.00 – 1.00 Mustang Sally - Susan  
1.00 – 4.00 Folk/Swingin’ Jazz Club - Peter  
4.00 – 7.00 Celtic Note - Joe  
7.00 – 10.00 Classical Sounds - Chris

**TUESDAY**

6.00 – 9.00 Tuesday Breakfast - Bob  
9.00 - 12.00 Around The World – Leila  
12.00 - 3.00 Country Roads – Joe  
3.00 – 6.00 Rocking on the Avon - Denni

**WEDNESDAY**

9.00 – 1.00 A Little Bit of Everything - Joe  
1.00 – 4.00 Potpourri – Peter  
7.00 – 9:00 Back to the Future – Frank

**THURSDAY**

6.00 – 9.00 On The Upbeat - Rhonda  
9.00 – 12.00 Mustang Sally - Susan  
12.00 – 3.00 Kaleidoscope – Chris  
3.00 – 6.00 Sweet with a Beat - KT  
6.00 – 9.00 True Rock & Roll - Milo

**FRIDAY**

6.00 – 10.00 Friday Breakfast - Bob  
6.00 – 9.00 Friday Night Country - Milo

**SATURDAY**

6.00 – 10.00 Saturday Morning Variety Show - Terry  
12.00 – 3.00 Saturday Mix – Graham  
9.00 – midnight Late Night Nic - Nic

Station Contact Information

Phone Number 9641 2422

Email: [radio6ycr@hotmail.com](mailto:radio6ycr@hotmail.com)

Facebook.com: Voice of the Avon

101.3 FM – with live streaming

Website: [www.voiceoftheavon.org.au](http://www.voiceoftheavon.org.au) –

live streaming of Voice of the Avon

101.3 FM

**77.5 hours of local presenters  
each week. Effective 10 July 2016**

## Avondale Wardens Report August 2016

### Avondale Volunteer Day

On Saturday 16 July saw the National Trust of WA and the Avondale Farm Project Association hosted a Volunteer day at Avondale. The aim of this day was to get the local community and volunteers involved in the Reserve Bushland Project at Avondale.

Sarah Gosden led the day along with Kelly Rippingale from the National Trust with several different projects being completed over the weekend. All up 780 shrubs where planted along the south west fence line in order to create under story for the trees that were planted in 2014. Children of all ages also painted and hung 16 nesting boxes along the walk trail to encourage a wider variety of bird life back into the reserve to nest.

Over the next couple of weeks feral animal control will take place in order to reduce the number of feral cats and foxes that currently surround Avondale. Cat traps and fox traps have been purchased especially for this activity. The Reserve fence line will receive a little maintenance to make sure all feral animals will no longer be able to return to the reserve. The work is far from complete but over the next couple of months the reserve will receive quite a bit of TLC.

The work we have done supports the overall goals for the bushland reserve of retaining the existing vegetation and planting new vegetation to improve the structure and health of the Reserve. Not only to enrich it as a biodiversity asset which is capable of supporting a large range of native fauna, but also as an area for education (scientific and cultural) and training purposes (bushland rehabilitation techniques and opportunities). These factors will also buoy the conservation importance of the reserve and therefore enable further opportunities for grant funding.

#### AFPA Wheaten Crop

The Avondale Farm Project Association committee once again planted wheaten hay for the resident Clydesdales, it's looking lush and green which I gather is a great sign. Both Robbie and Comets mouths have been watering every time they see it.

#### Beverley Show 2016

Comet the Clydesdale will be at this year's show. I did ask Robbie if he wanted to go but he said he would rather stay home and keep Jazz the pony company. He just asked that I please bring him home some fairy floss. At this year's show make sure you look for the Avondale Farm Project Association tent and that's where you will find Comet.

Mon.



Left: Tree planting volunteers'



Right: Bird Box hanging



Left: Young Volunteers adding the finishing touches



Right: The end result

# BEVERLEY NATURALISTS CLUB NEWS

## ILLEGAL DUMPING OF RUBBISH

I feel very sad to have to bring this to everyone's attention but someone dumped a load of household rubbish on the Dump Rd a couple of weeks ago. The rubbish had blown everywhere overnight and it was a disgusting mess. There is never an excuse for illegally dumping rubbish because it impacts on the native animals that live in the area and many species of wildlife brought into care because they accidentally eat it or get caught up in it. Shire workers also had to be called in to clean it up which is a cost to all ratepayers. I would like to say a big thank you to Steve Gollan for his prompt action in authorising the shire staff to clean it up. Also a big thanks to the workers who did a great job of cleaning it up. Please remember it is your rubbish so dispose of it properly there is never an excuse for dumping illegally.

## REMOVING FIREWOOD FROM BUSH RESERVES

It is illegal to remove fallen timber from reserves for firewood. I have had several phone calls recently from concerned people regarding this practice. I have also seen the increase in this practice in recent weeks. I know the weather has been exceptionally cold but it still does not mean you can go and collect firewood illegally. Firewood can be purchased from a local business which has been collected with sound environmental practices. Please if anyone sees anyone collecting firewood get car registrations if possible and record date time and place and we can then get the authorities involved to stop this practice.

## HANDS FOR EARTH BUSH CLEANUP

All the negative stuff is out of the way now we can talk about the great stuff we have been doing who would think cleaning up rubbish could be so much fun. We have a great time while we are cleaning up the bush along the Dump Road. We have had between 6 and 8 people each time. We start with a breakfast and a cuppa and then we go and clean up for about an hour. It is wonderful to see what we can do in an hour or so. There is a lot of old metal, fencing wire and broken glass out there and every trailer load we take out we can see a big difference. Our next clean-up days are 09 and 23 August. We meet at 9am on the Dump Road and have some breakie and a cuppa and then at about 9.30 we go out to clean up. This area of bush is a very significant Reserve with some rare flora and fauna and is a good representation of Beverley's bushland. This area was once set aside for rubbish tip but about 10 years ago it was changed to Protection of Bushland and flora. Thanks to everyone who has been coming along and helping clean up the bush. Just bring yourself sensible footwear and gloves and a sense of humour and come and have some fun while doing some very important work.

## DECLARED RARE FLORA

We have discovered a Priority one species of *Eremophila* in Beverley which is very exciting. We have documented and photographed 60 plants in a very small area along a roadside. This will need very special protection as it would not take much to make it extinct. The appropriate authorities have been informed and its location have been GPSed so that a plan can be made to protect it from extinction.



## BROOKING STREET RESERVE

Recently we had a meeting with the Bushfire Risk Management officer John Hanson and a representative from DFES to discuss options for managing the risk of fire in this very special little Reserve. This was a very positive meeting with these guys listening to our worries for this Reserve and them giving some very good ideas on what can be done to help protect this Reserve into the future. This is a joint program that is being used in conjunction with local government and DFES and Bushfire Risk Management to get the best outcomes to not only protect our community but to also get sound environmental ways of managing the fire risk. As many local people know this is a special Orchid Reserve and is well worth saving. Many visitors to it have been truly amazed by this Reserve which makes all the hard work worth it. I also feel that now we can see a future for this Reserve thanks to John and us being able to work together. For so many years now we have had to fight hard to keep it from being destroyed.

If anyone would like any info on any of our Reserves or local Flora and Fauna please contact me anytime

Thanks Phyllis  
President - Beverley Naturalists Club

P | 0437 483 175  
E | [rubifacey@bigpond.com](mailto:rubifacey@bigpond.com)  
PO Box 139, Beverley, WA 6304





# VISIT US THIS DOWERIN FIELD DAY

**24 & 25 AUGUST 2016, SITE 38**

There's something for the whole family to enjoy!

- Have a coffee and a chat with your local Area Manager
- Get your hands on some great giveaways
- See a demo of our online nutritional tools
- Grab a drink with us at our Sundowner  
4:00pm-5.30pm on 24 August

We will be raising money for the Royal Flying Doctors Service and local community groups. Ask your Area Manager how you can get involved.



## Anglican Parish Beverley/Brookton

Times for services for:

**AUGUST 2016**

DAY	CHURCH LOCATION	TIME	SERVICE
		am	
Sunday 7th August	St. Mark's Brookton	8:30am	Prayer, Praise, & Proclamation
Sunday 7th August	St. Mary's Beverley	9:00am	Morning Prayer
Sunday 14th August	St. Mark's Brookton	8:30am	Prayer, Praise, & Proclamation
Sunday 14th August	St. Mary's Beverley	9:00am	Morning Prayer
# Sunday 21st August	St. Mark's Brookton	8:30am	Prayer, Praise, & Proclamation
Sunday 21st August	St. Mary's Beverley	9:00am	Morning Prayer
Sunday 28th August	St. Mark's Brookton	We are joining with & at the Uniting Church at 9:00am	
Sunday 28th August	St. Mary's Beverley	9:00am	Morning Prayer
Sunday 4th September	St. Mark's Brookton	8:30am	Prayer, Praise, & Proclamation
Sunday 4th September	St. Mary's Beverley	9:00am	Morning Prayer
Sunday 4th September	St. John in the Wilderness, the Dale	9:00am	Prayer, Praise, & Proclamation

# On this Sunday there will be a short service followed by Bible study.

Telephone contacts: **Beverley - 9641 6023** or **9646 0522**

**Brookton - 9642 1373** or **9642 2357**

All mail including St. Mary's Society please address to: **P.O. Box 292, Beverley.**



### CATHOLIC CHURCH

Service in Beverley  
8:00 am every Sunday at  
Beverley Sacred Heart Church  
Lukin Street, Beverley



### THE RELIGIOUS SOCIETY OF FRIENDS (QUAKERS)

Beverley Friends Meeting  
Old Catholic School Rooms  
Dempster Street

**Sunday 10:30am -**  
Meeting for Worship

For more information & enquiries  
phone 9646 0575.

### BEVERLEY CHRISTIAN FELLOWSHIP

Bible study

Monday evening at 7.30pm  
followed by supper and a time  
of caring and sharing fellowship  
place alternating homes

Visiting Pastor from independent  
ministries

SWOT (South West Outreach Team)  
1st Wednesday of the month  
10.00am

Place 16 Barnsley Street, Beverley

Enquiries  
9646 0282 or 9646 0546

### BEVERLEY HOME CHURCH

Meet 1st and 3rd

Saturday of each month

meeting at 3.30pm

Fellowship meal at 6.00pm

followed by a games night

16 Barnsley Street,

Beverley

Enquiries - 9646 0546

### BEVERLEY REAL LIFE CHURCH



Doing  
Life  
With  
Christ

10am  
SUNDAYS

Meeting in the old Oasis church building.

**50 Hunt Rd, Beverley**

**Bring and Share lunch - each week**

## Meals on Wheels AUGUST 2016

Aug 01 N. Darr  
Aug 02 D. & E White  
Aug 03 S Negus  
Aug 04 V McKelvie  
Aug 05 G. Redding

Aug 08 B Foster  
Aug 09 J Howell  
Aug 10 G. Courtney & M. Alford  
Aug 11 P. Smith  
Aug 12 B. Sims

Aug 15 A. Elston  
Aug 16 K. Badger  
Aug 17 G & P Burns  
Aug 18 G. Tasker  
Aug 19 A. & K Boyle

Aug 22 B Wauchope  
Aug 23 R & G McCallum  
Aug 24 S Eramiha  
Aug 25 G Roache  
Aug 26 J Johnson

Aug 29 M Smith  
Aug 30 N Darr  
Aug 31 D & E White  
Sept 01 V McKelvie  
Sept 02 S Negus



# Learn to Meditate

Experience self realisation through kundalini awakening.

Learn simple ways to...

go beyond thinking

keep your system in balance

help to reduce stress



Sri Mataji Nirmala Devi – founder



- Suitable for complete beginners and regulars
- Join in at anytime, even if you miss a session
- No strenuous physical exercises, postures or special clothing required
- Chairs provided
- Daytime or evening classes available in other locations. (See website below for Australia wide venue details.)
- All classes are free
- No booking required

Beverley Community Resource Centre  
(Small Room right side of main building)

Monday 6.00pm - 7.00pm  
Wednesday 2.00pm - 3.00pm

[www.freemeditation.com.au](http://www.freemeditation.com.au)



The Church of  
United Spiritualism

Please contact Rev Irene  
on 9646 0470 for details.

### DRUG & ALCOHOL COUNSELLING

The Wheatbelt  
Community Drug  
Service Team will  
be visiting  
Beverley Hospital  
fortnightly.

For appointments please phone  
Jackie Darby on  
96211 055.

# LEH Earthmoving



Little Eco Hill



## Year Round Grader Hire Service

All your on farm grading requirements including:

- Fire breaks
- Roaded catchments
- Contour bank installation and removal,
- Levelling old fence lines and
- General road maintenance.

DAN WILKINSON

0417 093 090

9648 1006

PO Box 261 Beverley WA 6304  
dan.zoe@bigpond.com

ABN: 76 315 246 782



GJ & VJ SEEBER  
TRADING AS



# BEVERLEY GAS AND PLUMBING SERVICES

Your **LOCAL**

Class 'A' Licenced Plumber & Unrestricted Licenced Gas Fitter

Established in Beverley since 1997  
Servicing Beverley and Surrounding Districts

NO JOB TOO SMALL OR TOO **BIG**

**Mob: 0418 929 141**

**Tel: 9647 2115 (AH)**

**Fax: 9647 2109**

## PLUMBING - CLASS 'A' LICENCE

- ◆ ACCREDITED WATERWISE AND ENVIROWEST PLUMBER
- ◆ SEPTIC INSTALLATIONS
- ◆ SEWERAGE CONVERSIONS
- ◆ MAINTENANCE AND INSTALLATION OF ALL DOMESTIC AND COMMERCIAL PLUMBING REQUIREMENTS
- ◆ BACK FLOW INSTALLATION AND TESTING

## GAS FITTING - UNRESTRICTED LICENCE

- ◆ MAINTENANCE AND INSTALLATION OF ALL COMMERCIAL AND DOMESTIC GAS REQUIREMENTS

Plumbing Licence No. PL216  
 Gas Licence No 386  
 Backflow Licence No 103



# Natway Furniture & Constructions

ABN: 62 824 726 465

**Wayne & Natalie  
Ashworth**

Qualified  
Carpenter & Joiner  
Tradesman

- General Building Work
- Furniture Construction & Restoration

27 Brooking Street,  
Beverley

**Phone:  
08 9646 0159**

Mobile: 0417 973 415  
(Wayne)

Mobile: 0429 491 039  
(Natalie)

# AVON BLINDS

Made Local in the Avon Valley  
Free Measure & Quote Service

- Roller Blinds
- Vertical Blinds
- Roman Blinds
- Patio Awnings
- Bistro Blinds
- Automatic Awnings
- Solar-Glide Awnings

Huge Colour & Fabric Range

Office: 96461948

Mobile: 0447990850

Visit: [www.avonblinds.com.au](http://www.avonblinds.com.au)

Email: [sales@avonblinds.com.au](mailto:sales@avonblinds.com.au)

# Max Hunter's Firewood Supplies Ph: 96461 236



The Jarrah Bush Wood  
is sold by the tonne.  
Delivered in truck or  
trailer loads.



## Windows 10 Updates

Many of my clients have problems with Windows 10 updates. In this article I will explain why updates are important and how to avoid these difficulties.

**Why Take Updates?** Updates are issued for many reasons, e.g.: to fix bugs (errors) in the system software or Apps; to add extra features and enhancements; or to fix compatibility issues with other devices, e.g. printers. But the main reason for updates is to fix security vulnerabilities, often after these vulnerabilities have been discovered and exploited by criminals. **It is therefore essential to take all updates, and keep your PC up-to-date.** Also update your virus protection programs – there are new viruses every day.

**What is Different in Windows 10?** In earlier versions of the Microsoft operating systems (XP, Vista, 7, 8 etc.) you could choose what updates to download and when. However, many people did not keep their PCs up-to-date therefore had many problems with their PCs and virus attacks. Microsoft decided that in Windows 10 they would make updates mandatory and automatic.

**Why are there problems with Windows 10 Updates?** Because updates are automatic, many people are unaware that updates are being downloaded or installed on their PCs, so often shut down the PC during an update. Although Windows 10 is supposed to cope with this situation, often it doesn't and updates fail. When you turn your PC back on Windows 10 starts the update (s) again (and again!).

I have seen certain updates retry and fail up to 24 times!

### Windows 8 and 10 Privacy Settings

Have you adjusted all your windows 8 & 10 privacy settings? If not, go to settings → privacy and check them.

There are approximately 50 settings to change if you want to protect your privacy. You'll be horrified at the amount of information you share with Microsoft and the rest of the world!

This slows down your PC, uses up your Internet allowance and can cost dearly. During the early days of a new operating system there are many updates, some really large. If you don't take them the PC can fail. I have had to rebuild several Windows 10 PCs that were running really slowly because the updates were so messed up that they always failed.

**How to avoid update problems.** Before you shut down go to <Settings + Update & Security + Windows Update> and check whether there are updates in progress. If there are, keep the PC on until the updates have been installed. Make sure that you have enough Internet download allowance to cope with updates.

**Updates on a slow or limited Internet connection.** If you have poor Internet connection, e.g. using a 3G mobile connection, it is possible to provide some control over updates. Go to <Settings + Network & Internet + WiFi + Advanced Options> and turn on <Set as a metered connection>. This can only be done on a WiFi connection. Make sure you download all updates manually.

**DISCLAIMER:** Community information provided in good faith by Beverley IT. **Shire of Beverley accepts no liability for the content of this article**

**I'll come to you - Serving Beverley, Brookton, York & district**

- Can't find your files?
- Windows 8 & 10 a mystery?
- Virus or security worries?
- Printer, WiFi or Internet set up?
- Need Microsoft Office help?
- Mobile reception poor on your farm?



45 years experience in Computing, Internet & Telecoms;  
Word, Excel & PowerPoint expert

**Contact: Peter the Comm IT Man**

**Tel: 0419 949 604**

**peter@beverleyit.com.au**

**Unique Strokes W.A.  
Painting & Decorating**

Reg. No. 4236

**ROB BAIN**

**QUALIFIED LOCAL TRADESMEN**

For Guaranteed Traditional  
Workmanship & Prompt Free Quotes

**Phone: 08 9647 2102**

**Mobile: 0418 904 013**



## Ticked off: An introduction to Lyme disease

Republished as it appears in the latest issue of Wild, Alex Robey shares his insights into the mysterious tick-born Lyme disease and the signs of its existence on our shores.

If you're an Australian who loves getting outdoors, regardless of whether it's just for working, bushwalking, bird watching or the occasional holiday, you are probably at risk of being bitten by a tick – and that could have much more dire consequences than you'd expect.

Many sufferers of Lyme disease live with the symptoms without knowing they have contracted it, and this situation is exacerbated by the vast majority of health practitioners who don't recognise its presence or have the ability to diagnose it.

Tennille Pooley, an awareness advocate for Lyme disease, is a sufferer; so too are her husband and four children. While unsure of the exact vector, Pooley believes she contracted Lyme via sexual transmission from her husband. Even more concerning is the possibility that each of her children contracted the disease in utero.

"Most people don't realise the potential this disease has to pass from human to human," Pooley says. "Most think it is only transmitted via ticks."

### Lyme Disease: Causes and Vectors

In places like the US, it's accepted that Lyme disease is caused when bacteria from the genus borrelia infect a human. The spiral-shaped microorganism penetrates muscles, joints and major organs. Its ability to also penetrate connective tissue produces the potential for a multi-system infections through the body, resulting in devastating consequences.

Many animals may act as a host for borrelia, which can be found in their bloodstream. It's easy to see how a range of blood-sucking parasites might transmit these bacteria from one host to another, but for a long time Lyme disease has been primarily associated with ticks.

Important note: Ticks may in fact be the chief cause of Lyme disease in Australia, but chances of contracting the disease is reduced if ticks are removed safely. All care must be taken not to squeeze the tick's body during removal. Instead, a fine pair of tweezers should be used to grasp the tick as close to the bite as possible, before pulling upward with steady, even pressure.

Beyond other parasites and the possibility of sexual transmission, Pooley also warns of the dangers of eating undercooked meat, like steak.

Just about any situation where the blood of another host is transferred to a new one creates the potential for infection. As a result, the incidence of the disease can be accompanied by co-infections from bacteria like mycoplasma, bartonella, coxsiella, ehrlichia and rickettsia; viruses such as parvovirus, Epstein Barr and cytomegalovirus; and parasites like babesia and theileria.

## Painter Decorators

All repairs & painting

Lyndon & Cameron Grover

0427 661 302

lydongrover@bigpond.com

Reg: 3941



- Plastering
- Pressure Cleaning Roof
- Gyprock
- Spray Painting
- Repairs
- Gutter Replacing



## BADMINTON

We welcome anyone wishing to join us. All ages, men and women. Every Wednesday morning at the Beverley Town Hall. For more info call 0400 762 889



northam optical



- Bulk billing to Medicare
- HBF & DVA Provider
- Competitive prices
- Great range of frames & sunglasses
- Locally owned and operated

[www.northamoptical.com.au](http://www.northamoptical.com.au)

138 Fitzgerald St Northam WA P 9621 1131  
E northam.optical@yahoo.com.au



## York Estate Agents (Beverley Division)

**Good, Bad or Ugly We Sell!**

Free Appraisals

**"Properties WANTED we have qualified buyers waiting now"**

**Estate Experts  
Professional and Trustworthy**

Residential-Helen Stubing 0407 964 611

Rural- Mike Bawden 0403 268 158

Rentals- Jenette Callaghan 0418 929 011

Office - 9641 1335 Fax - 9641 1334

[www.yorkfn.com.au](http://www.yorkfn.com.au)

## *Beverley Netball Club*

On a very cold and wet Saturday the club hosted their Players Tea. Along with some amazing food there were many laughs thanks to the ladies that organised the games for the evening. It was excellent to see our junior club players come out for evening and feel like a part of our club.

The new scoreboards have arrived and they are a little bit larger than we anticipated, so they will have to be mounted at the courts. We ask the public to take care when using the courts. The funding for the scoreboards has been a collaborative effort and a huge thanks must go to S & S Morrell, The Redbacks Netball Club, Shire of Beverley and Beverley Netball Club.

The 2016 grand final will be held in Pingelly this year on Saturday 03 September. On this day our club will be holding their annual AGM, awards presentation and wind up for the 2016 season. For the parents and guardians of our junior players please be aware that they must be accompanied by an adult on the evening. We look forward to seeing some amazing costumes once again this year. Further details including catering costs will be forwarded to our members.

Beverley Show 2016.

This year the Beverley Netball Club will be manning the show bag stand as a fundraiser for the club. Our wonderful players will be at the show all day so be sure to pop over and buy up BIG. The money we raise goes towards future projects in our community. We are sure to have all the show favourites so head over to side show alley at the show.

# SHAZMAC PLUMBING

## PROUD TO BE YOUR LOCAL PLUMBER

Plumbing Licence: PL 5829 Gas Fitter Licence: GF 7422 RHL: L100443  
ABN: 18 531 685 326

For all your plumbing & gas fitting needs

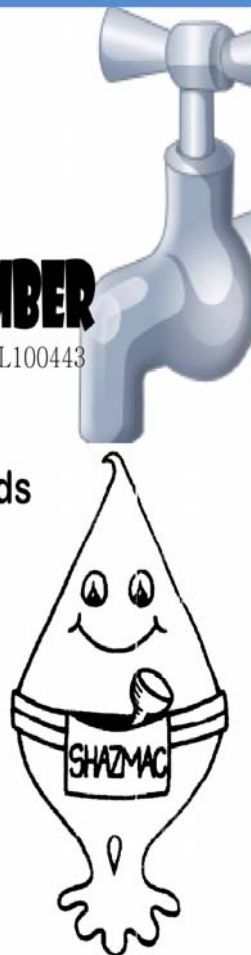
**Phone 0408 189 987**

**PO BOX 116**

**BEVERLEY WA 6304**

**shazmac1@westnet.com.au**

**NO job is too big or too small.**



---

# Beverley Men's Golf

deal conditions greeted 13 golfers on Saturday 25 June when the 4<sup>th</sup> qualifying round was held. This day was sponsored by Life Member **Fred Sing**.

At the end of the day veteran Wayne Smith was declared the winner with a good score of 75 nett. Darrell Hagan and Terry Winfield tied in second place after shooting 76 nett. Terry Winfield had the best Gross score with 85. Thanks are extended to **China** for sponsoring the day.

**Primaries** 3 Person Ambrose was held on Friday 01 July with 24 participating in the day. A great day was had by all who played and with novelties on all holes gave everyone a chance of winning a prize.

At the end of the day scores were very close, with the eventual winners being Mark Bickley, Les Annison and John Donovan with a nett score of 58.34, they were followed by the Mark Armstrong, Dillon Armstrong and Chris Pepper with a nett score of 60.34. Third place went to Darrell Hagan, Graeme Hagan and Gavin Sazanov with 60.70 nett. The Best Gross score was also shot by Mark Bickley, Les Annison and John Donovan with 71. It was very pleasing once again to see many players who don't play that often come to play in this event.

Again the Club extends their thanks to **Primaries of WA** and **Terry Winfield** for sponsoring this event and hopes it can continue next year.

Saturday 02 July was a club trophy in Beverley as a number of members were playing a 4 ball competition in Brookton. The winner of the day was Chris Lawlor with 37 Stableford points followed by Ryan Ware on 35.

Sunday 03 July was Brookton's Open Day which saw 8 players from Beverley participate. All players who played performed well.

Saturday 09 July was the Quarter Finals and Semi Finals of the Club Championships. Results for the day were.

## Quarter Finals Championships

Mark Armstrong defeated Gavin Sazanov  
Wayde McLean defeated Bruce Kilpatrick  
Terry Winfield defeated Ryan Ware  
Darrell Hagan defeated John Donovan

## Semi Finals Championships

Terry Winfield defeated Darrell Hagan  
Mark Armstrong vs. Wayde McLean (TBC)

## First Division

Chris Pepper defeated Les Annison  
Graeme Hagan defeated Keith Hawkins

This means that Terry Winfield will play the winner of the Mark Armstrong and Wayde McLean match in the 36 hole Final to see who will be the 2016 Beverley Golf Club Champion.

In the 1<sup>st</sup> Division Chris Pepper will take on Graeme Hagan this also is a 36 hole match.

8 players on Saturday 16 July played for a Club Trophy at home with Luke Gollan shooting 36 Stableford points to win the day. He was followed by Terry Winfield who recorded a 32 points.

Beverley also had 10 representatives play in the Kweda Open Day. Once again a great time was had by those who attended and recorded some good results on the day with Stephen Gollan and Bruce Kilpatrick being runner-up's, Les Annison and John Donovan came 6<sup>th</sup> and Gavin Sazanov and Mark Kont won the Hardest Trier's award.

**Wayde and Kathryn McLean** was sponsoring the 4 Ball Best Ball Stableford competition which was held on Saturday 23 July with 52 playing.

The Nett Winners at the end of the day were Wayde McLean and Michael Goss who had a great score of 50 points followed by Luke and Stephen Gollan with 46 points.

# Beverley Men's Golf

The gross winners were Luke Blechynden and Geoff Poultney from Kweda with 46 gross points and the runners-ups were Gordon Riggir and Kevin Burton from Chequers with 33 gross points.

The club sincerely thanks **Wayde and Kathryn** for their generosity in sponsoring this event.

Sunday 24 July was the **"Springdell Cup"** a 27 hole event. Play commenced in lovely fresh conditions at 8:30am with 44 players in the field.

At the end of the day there were some tremendous scores and not so good, but in the end all who played had a great day.

The Winner of the **2016 "Springdell Cup"** was Wayde McLean with a great score of 61 points. Runner-up was Greg Humphries (Corrigin) 59 points with third place being Clint Pitman (Corrigin) 58 points and Dave Wallace (York) in fourth place with 57 points.

Vance Blechynden (Brookton) won the **Barry Winfield Memorial Trophy** for the best Gross score with an impressive 53 points. Second place went to Michael Griffiths (Mandurah) 46 points and third place was won by Daniel Forward (Brookton) on 45 points.



Photo above: Vance Blechynden and Wayde McLean

Other award winners were:

Best 18 Holes:	Trevor Pearce (York)	39 points
Best 9 Holes (1 to 9):	Keith Johnson (Quairading)	21 points
Best 9 Holes (10 to 18):	Michael McBrearty (Brookton)	22 points
Limit Marker (27 h/cap & above):	Martu Peipi (York)	52 points
Veteran (55 & over):	Phil Bateman (Serpentine)	49 points
Super Vet (65 & over):	Gordon Riggir (Chequers)	55 points

An 18 hole competition was also played with the winner of this being Liam Gollan with 28 points, Graham Hagan was in second place with 25 points followed by Keith Hawkins with 23 points. Once again the club would like to thank **Andrew and Kellie Shaw** along with the **Sing Family** for supporting this day.

## July

Saturday 30	Club Trophy	Stableford
	Quairading 4 Ball Better Ball	Par
Sunday 31	AVGA Quairading Open Day	Stableford

## August

Saturday 06	Beverley Hydra Boom Trophy	Ambrose in 2's
Saturday 13	Les Annison Trophy	Stableford
	Club Championship – Finals	Match Play
	36 Holes. 9am Hit Off.	
Sunday 14	AVGA – Corrigin Open Day	Stableford
Saturday 20	Beverley Show	
Sunday 21	Mark Bickley Trophy	Par
Friday 26	Elders Day	Ambrose in 3's
	Arrange own 3	
Saturday 27	Club Trophy	Stableford
	York 4 Ball Better Ball	
Sunday 28	AVGA – York Open Day	Stableford

## LADIES GOLF

Wednesday 29 June  
OVERINGTON TROPHY  
Winner - Glenys Collins – 32pts  
Runner-up- Lyn Mactaggart- 31pts  
Pins- Yvonne Hobbs and Maxine Watts.

Friday 01 July  
GOOMALLING OPEN DAY  
Sera Minchin, Glenys Collins and Maxine Watts represented the Beverley club but without much success. Glenys did manage to win a raffle.

Wednesday 06 July  
HEATHER McLEAN TROPHY-4<sup>th</sup> silver spoon,4<sup>th</sup> putting, monthly medal.  
Winner- Glenys Collins – 73 nett  
Runner-up- Marg Peck – 76 nett  
Best 2<sup>nd</sup> shot- Maxine Watts.

Friday 08 July - Sunday 10 July  
PROVINCIAL TOURNAMENT AT RIVERVIEW GOLF CLUB ALBANY  
Glenys Collins and Jane Murray went to this event. When they left the weather forecast was not very good as it was going to bucket down, so they took extra clothing. As it turned out the weather was very kind to them.

Glenys didn't come home with anything to talk about but Jane won a nearest to the pin on Friday so she had a little bit to brag about. They had a great time and caught up with a lot of familiar faces.

Wednesday 13 July  
VAL HAGAN TROPHY  
Winner- Glenys Collins – 36 pts  
Runner-up- Jane Murray- 35pts  
Longest putt- Sera Minchin and nearest to pin Jane Murray.

Friday 15 July  
QUAIRADING OPEN DAY  
Glenys, Maxine, Jane, Sera and Margie went to Quairading and they all came home with something.

Glenys Collins was runner-up to the best nett with 60 pts and she was in the winning team. Also won a long putt.  
Jane Murray was the Veteran winner well done old girl.  
Margie Peck won a novelty on the day as well.  
Sera Minchin won a golf ball.  
Maxine Watts won a raffle.

Wednesday 20 July  
TM HAIR DESIGN TROPHY.JUBILEE FOUR-SOMES.  
Maxine Watts and Lyn Mactaggart won on 34pts  
Glenys Collins and Yvonne Hobbs were runner-up on 31 pts.  
Both nearest to pins was won by Yvonne.

# HOW TO COMPLETE THE CENSUS

August 9 is  
Census night



It's our moment to pause and play a role in shaping the future of Australia



It's important that everyone is counted in the Census



All information collected is secure, confidential and never shared with anyone



YOU CAN COMPLETE THE CENSUS IN ONE OF TWO WAYS.

## ONLINE

Completing the Census online is fast, easy, secure and environmentally friendly. You can use any internet-enabled computer or device.

## PAPER

If you choose, you can complete the Census using a paper form.

**1** From 1 August, households will receive a letter from the ABS with a unique online login code for completing the Census online and information on how to order a paper form.

**2** On August 9 go to [census.abs.gov.au](http://census.abs.gov.au) and login using your unique code.

**3** Complete the Census fully and accurately and submit your online form as soon as you're finished.

**2** Call the Census Paper Form Request Line on 1300 820 275 to order a paper form.

**3** Complete the Census fully and accurately and return the form as soon as possible via the enclosed Reply Paid envelope.

## GET ONLINE ON AUGUST 9

The Census is our moment to pause and play a role in shaping the future of Australia.

Visit [census.abs.gov.au](http://census.abs.gov.au) for more information.



Census  
[census.abs.gov.au](http://census.abs.gov.au)

OUR MOMENT TO MAKE A DIFFERENCE



## R.K Lupton Maintenance Services

Robert Lupton

553 Luptons Road  
West Dale WA 6304

Mobile: 0413 963 338  
PH / Fax: 08 9647 1031  
E-mail: [rlupton1983@gmail.com](mailto:rlupton1983@gmail.com)



Mechanical Service and Repairs  
All types of servicing from pushbikes to prime movers



# Beverley Hockey Club



**Friday 01 July**

**York Vipers v Beverley**

A freezing cold night in York, Beverley dominated with solid defence, excellent mid field passing and a strong attack. Newcomer to the game of hockey, Jacinta Murray scored her first goal! The team would like to thank Dani Whyte for filling in as goalie while Bec was away.

**Score: Beverley 5 def York Vipers 2**

**Goal Scorer:** Mirika Winmar, Nicola Broun, Lisa Mourach (2) and Jacinta Murray

**Award Winners**

Coaches Award: Marg Mourach – sponsored by Beverley Electrical

Captains Award: Lucy Nicolaides – sponsored by Beverley Transport

Jacinta Murray – sponsored by Northam Tavern

**Saturday 09 July**

**BYE**

**Saturday 16 July**

**Beverley v York Jetz**

A cool but overcast afternoon in Beverley, the girls started a little flat and were congested across the field. A much improved second half saw plenty of shots on goal but only one found its way into the cage. Everyone agreed we had lost a little bit of momentum after the York game and subsequent bye, hopefully the week after sees a change.

**Score: Beverley 1 lost York Jetz 3**

**Goal Scorer:** Carissa Shaw

**Award Winners**

Captains Award: Chantelle Meade – sponsored by Beverley Transport

Coaches Award: Lucy Nicolaides – sponsored by Beverley Electrical

Nicola Broun – sponsored by Northam Tavern.

**Saturday 23 July**

**Beverley v York Cougars**

Our last home game in cool overcast conditions began a little slowly for the Redbacks. The rain threatened and so did the Cougars, who eventually scored in the first half. The second half saw the passing and talking improve along with shots on goal. Unfortunately the Reddies had most of the play in the second half but were unable to convert.

**Score: Beverley 0 lost York Cougars 1**

**Award Winners**

Captain Award: Megan (Bird) Gaine – sponsored by Beverley Transport

Coaches Award: Carly Veitch – sponsored by Beverley Electrical

Penny Burns – sponsored by Northam Tavern

## Beverley Show

The Beverley Redbacks Hockey club will again be serving all kinds of dinner delights from the Amenities Kitchen at the Beverley Show. Come down and see us from approximately 5pm to get your hot chips and hamburgers! We wish the Beverley Agricultural Society a very successful day and look forward to seeing everyone there.

## Hockey Grandfinal

The Beverley Redbacks Hockey club will be hosting the Avon Association Hockey Grand finals on Saturday 10 September 2016. The day includes Juniors, Ladies and Men's Grand finals from approximately 8am. We will be running a canteen, so come down to watch some great games and support the club.

## Next Games

Friday 05 August York v Beverley  
in York 7:45pm

Saturday 13 August Aces v Beverley  
in Northam 1:30pm

Friday 19 August Beverley v York  
in York

## Stay in Touch

Please contact Club Secretary, Chantelle Meade 0429418576 or [beverleyhockey@live.com.au](mailto:beverleyhockey@live.com.au) if you wish to be included on the club email list... or for the up-to-minute news...



# BEVERLEY TRANSPORT SERVICE

Your local carrier for over 30 years.

**GRAIN, FERTILISER, LIME, HAY, WOOL AND  
GENERAL TRANSPORT**

We are now able to cart  
liquid fertiliser from all suppliers.

**Garry & Sarah Miller**

**Ph: 9646 4066 or 0428 464 066**

**miller@reachnet.com.au**

# Beverley Bowling Club

Invites entries to



## PRIMARIES MENS TRIPLES

SPONSORED BY PRIMARIES OF WA

**Friday 02 September**  
Play starting at 9.30am

**Entry Fee - \$75.00 per team**

*(Includes green fees, lunch, morning & afternoon tea)*

*Non-Members welcome, Non-Whites Attire*

**ENTRIES CLOSE WEDNESDAY 31 August 2016.**

Club: Phone/Fax - 9646 1340 or Men's Captain: Greg Barrett-Lennard 0429 952 644

### COME AND HAVE A ROLL

## WINDSCREENS & GLAZING

*All glass replacements*

*- vehicle, residential & commercial -*

*Licensed to handle insurance work and private*

### AVON VALLEY WINDSCREENS

**Ron Robinson**

**0429 001 393**

[rrobinson@westnet.com.au](mailto:rrobinson@westnet.com.au)

[www.avvwindscreens.com.au](http://www.avvwindscreens.com.au)

- \* Specialising in all glass replacement
- \* Chip repairs
- \* Windscreen replacement in all vehicles
- \* Door windows
- \* Rear windows
- \* Safety glass
- \* Residential glazing
- \* Tinting
- \* Shelving
- \* Commercial glazing
- \* Shower screens
- \* Mirrors

***We come to you!***

Lic MR 11693



## Carpentry and Maintenance

30 years experience tradesman

- \* Renovations and alterations on bathrooms and kitchens,
- \* Ceilings,
- \* Cornices,
- \* Gyprock Flushing,
- \* Windows,
- \* Doors,
- \* Roofing,
- \* Gutters,
- \* Downpipes,
- \* Painting,
- \* Tiling,
- \* Decks and
- \* Pergolas.



**Phone Dean 0429 649 781**





# BEVERLEY FOOTBALL CLUB



## ROUND 10 - Sunday 26 June

### League Results

BEVERLEY	17.6 - 108
KELLER/TAMMIN	11.12-78

**Best Players:** R. Gaerth, J. Turner, J. Mann, M. Ruggiero, J. Keeffe, D. Shardlow  
**Goal Kickers:** M. Ruggiero 6, C. Bateman 3, K. Ugle 2, J. Adams, D. Shardlow, J. Keeffe, L. Mcknight, J. Turner, S. Murray

### Reserves Results

BEVERLEY	
KELLER/TAMMIN	

**Best Players:**  
**Goal Kickers:**

## ROUND 11- Saturday 02 July

### League Results

BEVERLEY	17.11 - 113
FEDERALS	14.13 - 97

**Best Players:** J. Turner, M. Ruggiero, J. Mann, J. Murray  
**Goal Kickers:** M. Ruggiero 6, K. Ugle 3, J. Murray 3, W. Schorer 2, R. Gaerth 2, J. Keeffe

### Reserves Results

BEVERLEY	8.14 - 62
FEDERALS	10.3 - 63

**Best Players:** D. Fleay, G. Lewis, L. Gollan, A. Broun  
**Goal Kickers:** B. Kiernan 3, C. Bailey 2, J. Eades, G. Lewis, A. Smith

## ROUND 12 - Sunday 17 JULY

### League Results

YORK	15.18 - 108
BEVERLEY	3.9 - 27

**Best Players:** J. Mann, L. Ugle, B. McLean  
**Goal Kickers:** T. McShane, W. Schorer, C. Bateman

### Reserves Results

YORK	11.15 - 81
BEVERLEY	0.5 - 5

**Best Players:** T. Brogan-Henry, M. Bickley, L. Gollan, A. Smith  
**Goal Kickers:** NO RESULTS

## ROUND 13 - Saturday 23 July

### League Results

CUNDERDIN	13.11 - 89
BEVERLEY	6.10 - 46

**Best Players:** NO RESULTS  
**Goal Kickers:** K. Ugle 2, M. Ruggiero, R. Gaerth, L. Ugle, D. Mcarthur

### Reserves Results

CUNDERDIN	11.8 - 74
BEVERLEY	4.4 - 28

**Best Players:** NO RESULTS  
**Goal Kickers:** R. Nardini 2, M. Taylor, B. Kiernan

## NETBALL RESULTS

### ROUND 10

BEVERLEY	14	<b>Best Players:</b> Lucy Nicolaides Jennifer Murray, Elyse Alexander
KELLER/TAMMIN	43	

### ROUND 11

BEVERLEY	17	<b>Best Players:</b> Darci Miller, Candice Franklin and
FEDERALS	63	

### ROUND 12

YORK	56	<b>Best Players:</b> Darci Miller, Megan Vandenberg and Chantelle Meade
BEVERLEY	15	

### ROUND 13

CUNDERDIN	59	<b>Best Players:</b> Sarah Owens, Megan Vandenberg and Candice Franklin
BEVERLEY	39	

## Coming Events: SATURDAY 06 August

96 Grand Final Reunion and final home game for the season!



Photo courtesy of Shelley Wilkinson Phtography



See you at the footy !

# Beverley Horse and Pony Club

On the 9th, 10th, and 11th July the Avon Zone Camp was held at Avon Valley Pony Club in Northam. This year 9 of our riding members (almost half of our club!!!) and their mums went and braved the cold, long weekend. They all seemed to have a good time participating in various riding and non riding activities. It's fantastic to see the improvements in their riding after such an intensive weekend of coaching. Throughout the day and into the evening there are diverse lessons and talks held.



This year one of the evening talks was presented by Veterinary Surgeon, Tracy Thornton from Heartlands Veterinary Hospital in York. Tracy was covering the topic of equine dentistry and had a quiz at the end of the presentation with a very good prize to be won. As credit to our club and coaches both Jessamin and Tealah were given first prize as they were the only ones with all the correct answers! Well done girls, hard work does pay off. Each year it is interesting, fun weekend in its own unique way. This year we dealt with rain, ice, mud, some sunshine and then even more MUD!



Jessamin and Vicky are currently working very hard to get their C\* certificates completed before the year is done. On the 19th July they sat their pre exam and passed. Now with a bit of extra training in a few areas they will be ready for their final exam very soon. Thank you to Jenifer Petchell and Judy Rose for helping them get so far.

Beverley Show is fast approaching, good luck to all riders attending, it is sure to be a fantastic day. Balkuling Pony Club always put on a enjoyable day for all. Hopefully the weather stays kind for all show goers.



Our next Rally is SUNDAY 14th August, riders please arrive at 7.45am set up. Please contact Vicky if you are interested in attending, have any questions or cannot make the rally, 0409 158 852 or vickylucas@live.com Happy Riding, Bush Possum .

## York Chiropractic

MacLachlan Centre – 4 Trews Road



Clinic available every week

**9641 1500**

**Dr Alexandra (Sacha) Browne**

*B.Sc (Chiropractic) B.Chiropractic*

**Dr Liam Welfar**

*B.Chiro (Hons) B.Sc (Chiro) B.Sc (Env. Health)*



Also available in Cunderdin and Merredin

# LEH Earthmoving



**Little Eco Hill**



**Backhoe - Bobcat - Bulk Haulage**

- Experienced owner / operator
- Six wheeler tip truck and trailer
- Bulk Cartage including sand, gravel, blue metal etc. (supply and deliver)
- Grader Hire Service available
- All aspects of sand pads (house, shed, water tanks)
- Site clearing and site clean-ups
- Auger up to 650mm.

**DAN WILKINSON**

**0417 093 090**

**9648 1006**

PO Box 261 Beverley WA 6304

dan.zoe@bigpond.com

ABN: 76 315 246 782

## Coming Events In Beverley

2016		
Friday	05 August	Jeans for Genes Day
Saturday	06 August	1996 Grand Final Reunion
Wednesday	10 August	CWA Friendship Day
Thursday	11 August	Leadership Forum at Beverley School
Friday	12 August	MY GOV Digital Event at CRC
Friday	12 August	Quiz Night at Bowling Club
Sunday	14 August	BHPC Rally
Thursday	18 August	Vietnam Veterans Day 50 years The Battle of Long Tan
<b>Saturday</b>	<b>20 August</b>	<b>Beverley Ag Society Show Day</b>
Sunday	21 August	BORMSA Autocross
Sunday	21 August	BDMCC Ulinga Cup Rd 3
	September	BHPC All Breeds Show
Friday	02 September	Primaries Mens Triples at Bowling Club
Saturday	03 September	Beverley Netball Club Windup and AGM
Saturday	10 September	VOICE MOVES Choir Bash at Platform Theatre
Sunday	11 September	BDMCC Go Moto 4
Friday	16 September	Beverley School Fete
Saturday	17 September	BORMSA Twilight KX
Sunday	18 September	BORMSA Busy Bee / Driver Development
Sunday	02 October	BDMCC Go Moto 5
Sat 08 October	Sun 09 October	Beverley Heroic Weekend
Sunday	23 October	BORMSA Autocross
Sunday	23 October	BDMCC Ulinga Cup Rd/Trophy Presentation Day



**ADVERTISE YOUR EVENT HERE FOR FREE**  
**EMAIL: [blarney@beverley.wa.gov.au](mailto:blarney@beverley.wa.gov.au)**

EDITION	DEADLINE DATE
SEPTEMBER EDITION 2016	WEDNESDAY 24 AUGUST 2016
OCTOBER EDITION 2016	FRIDAY 23 SEPTEMBER 2016
NOVEMBER EDITION 2016	MONDAY 24 OCTOBER 2016
DECEMBER EDITION 2016	WEDNESDAY 23 NOVEMBER 2016
JANUARY EDITION 2017	MONDAY 19 DECEMBER 2016

The flag was flown at half-mast on the Beverley Town Hall as a mark of respect to:-

- **HALL, Robert (Bob)**

### DISCLAIMER

*The information in this publication is of a general nature as a service to the ratepayer. The articles included herein are not intended to provide a complete discussion of each subject. While the information is believed to be correct, no responsibility is accepted for its accuracy. No liability is accepted for any statements of opinion or any error or omission.*

# BEVERLEY BLARNEY

1,100 copies each month

ADVERTISEMENT SIZE	COST (GST inc)
Size G: Full Page (A4)	<b>\$170.00</b>
Size A: 122 x 180 mm	<b>\$89.00</b>
Size B: 122 x 89 mm	<b>\$ 44.00</b>
Size C: 60 x 89 mm	<b>\$ 27.00</b>
Size F: 122 x 135 mm	<b>\$ 67.00</b>
Size D *: 5 lines	<b>\$ 8.00*</b>
Size E *: 3 lines	<b>\$ 5.00*</b>
Trading Post: 120 characters	<b>\$3.00</b>

We offer a special discount to advertisers who pay for 12 months in advance.

Contact our friendly Shire staff today.

Community notices are free of charge

**The deadline for the next  
Beverley Blarney is 4pm  
WEDNESDAY 24 AUGUST 2016**

Shire of Beverley  
PO Box 20, Beverley, 6304  
P: 9646 1200 | F: 9646 1409  
E: [blarney@beverley.wa.gov.au](mailto:blarney@beverley.wa.gov.au)

Online editions: [www.beverley.wa.gov.au](http://www.beverley.wa.gov.au)

**DON'T FORGET TO GET YOUR  
SHOW ENTRIES ON TIME!**

# What's on in August 2016



Monday	Tuesday	Wednesday	Thursday	Friday	Saturday	Sunday
<p><i>1</i> Weight Watchers</p> <p>Bridge at CWA</p> <p>Dance</p>	<p><i>2</i> Men's Shed</p> <p>HACC</p> <p>Quilting</p> <p>Stay Active</p> <p>Community Grants Due</p>	<p><i>3</i> HACC</p> <p>RAOB</p> <p>Badminton</p> <p>Ladies Golf</p> <p>Netball Training</p> <p>Footy Training</p>	<p><i>4</i> Line Dancing</p> <p>Hockey Training</p> <p>Junior Netball Training</p>	<p><i>5</i> Op Shop</p> <p>Footy Training</p> <p>Jeans for Genes Day</p>	<p><i>6</i> RSL Markets</p> <p>Samba at CWA</p> <p>Final home game Footy in Beverley Beverley v Quairading</p>	<p><i>7</i></p>
<p><i>8</i> Weight Watchers</p> <p>Bridge at CWA</p> <p>Dance</p> <p>Historical Meeting</p>	<p><i>9</i> Men's Shed</p> <p>HACC</p> <p>Quilting</p> <p>Stay Active</p> <p>CENSUS Night</p>	<p><i>10</i> HACC</p> <p>Badminton</p> <p>Ladies Golf</p> <p>Netball Training</p> <p>Footy Training</p> <p>CWA Friendship Day</p> <p>RSL AGM</p>	<p><i>11</i> Line Dancing</p> <p>Hockey Training</p> <p>Junior Netball Training</p>	<p><i>12</i> Op Shop</p> <p>Footy Training</p> <p>RECYCLE BIN</p> <p>Kindy enrolments due today</p> <p>MYGOV Session at the CRC.</p>	<p><i>13</i> Samba at CWA</p>	<p><i>14</i> <i>BPHC Rally</i></p>
<p><i>15</i> Weight Watchers</p> <p>Bridge at CWA</p> <p>Dance</p> <p>Mobile Van for the Department of Human Services in Beverley</p>	<p><i>16</i> Men's Shed</p> <p>HACC</p> <p>Quilting</p> <p>Stay Active</p>	<p><i>17</i> HACC</p> <p>Badminton</p> <p>Ladies Golf</p> <p>Netball Training</p> <p>Footy Training</p> <p>CWA Meeting</p>	<p><i>18</i> Line Dancing</p> <p>Hockey Training</p> <p>Junior Netball Training</p> <p>Vietnam Veterans Day - 50 years The Battle of Long Tan</p>	<p><i>19</i> Op Shop</p> <p>Footy Training</p>	<p><i>20</i> Samba at CWA</p> <p><b>AVONDALE Open</b></p> <p><b>Beverley 140th SHOW DAY</b></p> <p>Live Music Freemasons Tavern</p>	<p><i>21</i> BORMSA Autocross</p> <p><b>AVONDALE Open</b></p> <p>BDMCC Ulinga Cup Round 3</p>
<p><i>22</i> Weight Watchers</p> <p>Bridge at CWA</p> <p>Dance</p>	<p><i>23</i> Men's Shed</p> <p>HACC</p> <p>Quilting</p> <p>Stay Active</p> <p><b>COUNCIL MEETING</b></p>	<p><i>24</i> HACC</p> <p>Badminton</p> <p>Ladies Golf</p> <p>Netball Training</p> <p>Footy Training</p> <p>DOWERIN Field Day</p> <p><b>BLARNEY DEADLINE</b></p>	<p><i>25</i> Line Dancing</p> <p>Hockey Training</p> <p>Junior Netball Training</p> <p>DOWERIN Field Day</p>	<p><i>26</i> Op Shop</p> <p>Footy Training</p> <p>RECYCLE BIN</p>	<p><i>27</i> Samba at CWA</p>	<p><i>28</i></p>
<p><i>29</i> Weight Watchers</p> <p>Bridge at CWA</p> <p>Dance</p>	<p><i>30</i> Men's Shed</p> <p>HACC</p> <p>Quilting</p> <p>Stay Active</p>	<p><i>31</i> HACC</p> <p>Badminton</p> <p>Ladies Golf</p> <p>Netball Training</p> <p>Footy Training</p>				