



BEVERLEY BLARNEY

Edition 351
January 2014
No Charge

*Best wishes to all of
our readers in 2014*



AUSTRALIA DAY

The Bumper Boats are BACK!!!

A whole day of fun, freebies and total fun in the sun.

Celebrate **2014** Australia Day with your friends and family at

The Beverley Pool

FREE ENTRY ALL DAY

GATES OPEN @ 10am and Formal Flag Ceremony 12pm sharp.

Complimentary Sausage Sizzle, Can of Drink PLUS

Peters Drumstick Ice Cream for the first 100 kids



Proudly supported by Contract Aquatic Services, Shire of Beverley and IGA



Beverley Supermarket & Liquor



President Report January 2014

Your Council in 2014

Welcome to the New Year! Council looks forward to continuing its representation and deliberations on behalf of the ratepayers, residents and community of Beverley in 2014 whilst taking a long term approach to sustainability planning for our future.

Council Committees

The Audit and Risk Committee is a legislated requirement for Local Governments. Council will be trialling a different approach in 2014 for the remaining Committees, aligning with the Strategic Community Plan (CSP) developed in 2012 following extensive community consultation as part of the Department of Local Government's Integrated Planning Framework.

Council Committees now comprise:-

- Audit and Risk Committee, Chairperson Cr David White
- Corporate Strategy Committee, Chairperson TBC
- Economic and Community Strategy Committee, Chairperson TBC.

A meeting schedule for the Committees has been established for the year and additional meetings will be held as required. It is proposed that smaller working groups will be

established within the whole of council Committees for specific projects.

Council Delegates/Representatives

- WALGA Central Country Zone Crs Ridgway and Pepper, proxy Cr Murray (Cr Ridgway also a member of CCZ executive).
- Hotham Dale Sub Group (roads) - Cr Murray, proxy Cr Alexander.
- Fire Control Officer Meetings - Cr Ridgway, proxy Cr Shaw.
- Cropping Committee-Crs Ridgway, Shaw and Murray.
- Beverley Station Arts - Cr White.
- Wheatbelt Railway Retention Alliance - Cr Alexander.
- Avondale Farm Project Association - Crs Gogol and Davis.
- Beverley Tourist and Development Association - Cr Gogol, proxy Cr Pepper.
- Avon Tourism - Cr Pepper (Cr Pepper has also taken a position on the Board of Avon Tourism).
- Beverley Frail Age Lodge - Crs Murray and Shaw.
- Local Hospital Advisory Committee - Crs Murray and White.
- Cr Ridgway is an independent member of the Beverley Community Resource Centre Management Committee.

Annual Electors Meeting 8pm Monday 13th January 2014

The Annual Electors meeting will be held at the Function and Recreation Centre in Forrest St. The 2012/2013 Shire of Beverley Annual Report will be presented and an overview provided of current projects and activities within the Shire. For anyone who hasn't yet toured the new building this will be another opportunity to do so.

Shire Roads

Following the large harvest (which has been wonderful for the district) there are many roads in the Shire that are showing the strain. Please advise the Shire Office of road maintenance issues. Council will be reviewing the capital road programme in the New Year as part of the 14/15 budgetary process.

Buildings

Works are underway to repair the ceiling in the Lessor Hall and install air-conditioning. The old change rooms at the town oval have been demolished.

Airfield

Upgrade work is occurring to the hardstand area at the airfield where the fire bomber is refilled. The work will also assist the Royal Flying Doctor and Ambulance service.

Community Aged Support, Care and Housing

Whilst its early days, our community might be interested to know that informal discussions have occurred with Brookton and Pingelly around a collaborative approach toward aged care, support and housing. This follows the recent Wheatbelt Integrated Aged Support and Care Solutions study being undertaken across the region on behalf of the Wheatbelt Development Commission. Council will aim to develop a clear understanding of the impact on current health services and aged care in Beverley if various options are progressed through an alliance.

Dee Ridgway - Shire President



SHIRE OF BEVERLEY

Please be advised that the
Shire Administration Office will reopen at
8:30am on Monday, 6 January 2014.

We wish all residents of Beverley a very a safe
and Happy New Year

The President, Councillors and Staff at the Shire of Beverley



Your Country Music Store

view catalogue at

WWW.INSIDEMUSIC.COM.AU

view other products at

WWW.NUMBER90GALLERYANDMUSIC.COM.AU

Contact Peter Byfield

N° 90 Gallery & Music

Mobile: 0418 906 307

90 Fitzgerald Street
NORTHAM WA 6401

email: number90@westnet.com.au
website: WWW.NUMBER90GALLERYANDMUSIC.COM.AU



SHIRE OF BEVERLEY NEWS and INFORMATION

Annual General Meeting of Electors

Notice is hereby given that the Annual General Meeting of Electors for the 2012/2013 financial year will be held in the Function & Recreation Centre, Forrest Street, Beverley on **MONDAY, 13 JANUARY 2014**, commencing at **8:00pm**.

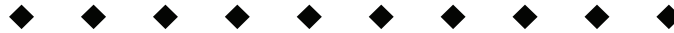
Order of Business

1. Adoption of 2012/2013 Annual Report
2. General Business

As per Section 5.5 of the *Local Government Act 1995* copies of the 2012/2013 Annual Report are available from the Shire Administration Office, located at 136 Vincent Street Beverley, during normal office hours.

To enable staff time to adequately research answers to questions, it would be appreciated if such enquires could be lodged at the Shire Office at least seventy two (72) hours prior to the scheduled commencement of the meeting.

STEPHEN P GOLLAN
Chief Executive Officer



THE BEVERLEY TIMES goes digital

The 33 rolls of micro fiche film recording the issues of the Beverley Times from 1903 to 1977 have been converted to disc and can now be viewed on a computer in the library.

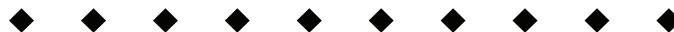
The issues have been sorted into years and spread over 96 folders for easier access to specific years

Once an issue has been opened for viewing, a search facility will find exactly the subject you are looking for

For a small charge you can then print the information if required. There is no charge to view The Beverley Times.

If you are not familiar with using a computer the library staff will be happy to show the ropes. Don't be scared, it is very user friendly.

The reproduction is first class and well worth a look and a browse through Beverley's history in print



LAST CHANCE TO APPLY FOR COMMUNITY GRANTS

Does your incorporated club have a project that needs some extra financial help to get it underway? And does your club go into holiday mode over January? If you've answered yes to both of these questions, then we highly recommend you call into the Shire Office and pick up a Community Grants Information and Application package so your committee can do it all now and have it ready to submit in January 2014.

The Community Grants will be open for submission from 8:30am Monday, 6 January 2014 to 4:00pm Friday 31 January 2014. Late submissions will NOT be accepted.

All the terms and conditions can be found in the information and application package.



SHIRE OF BEVERLEY NEWS and INFORMATION

The Shire of Beverley wish to announce the winners of the Christmas Lights Competition of 2013. We wish to thank all of the residents and businesses that took the time to put up some amazing light displays and also the voters. Congratulations to all the winners.

People's Choice - Commercial	Beverley Bakery
People's Choice - Residential	Cobb and Stacey Stanfield
Councillor's Choice - Commercial	Beverley Licenced Post Office
Councillor's Choice - Residential	Ozwin, Elizabeth and Andrew Thomas
Lucky Voter	Sue Martin



SHIRE OF BEVERLEY - BUSHFIRE BRIGADES FOR ALL FIRE EMERGENCIES CALL 000

Fire Control Officers (FCO)

Chief FCO	Bruce Kilpatrick	9646 4004	0428 464 006
Deputy Chief FCO	Robert Fisher	9647 2045	0427 472 045
Central Brigade	Darren Boyle	9646 1240	0428 932 711
North East Brigade	Lincoln Murray	9641 6146	0428 211 371
South East Brigade	Deane Aynsley	9646 6246	0428 466 246
Avondale Brigade	Andrew Shaw	9648 1022	0428 481 022
Dale - Kokeby Brigade	Bill Cleland	9647 2054	0428 472 054
Dale West Brigade	Paul Schilling	9647 1008	0427 158 908

HARVEST BAN HOTLINE: 9646 0145

HARVEST BAN OFFICERS

Chief FCO	Bruce Kilpatrick	9646 4004	0428 464 006
Deputy Chief FCO	Robert Fisher	9647 2045	0427 472 045
Avondale Brigade	Andrew Shaw	9648 1022	0428 481 022

OPERATIONS MANAGER NORTHAM DFES

Sven Anderson (District Manager)	9690 2300	0429 922 062
----------------------------------	-----------	--------------

FIRE AMBULANCE & POLCE	000	VOLUNTEER BUSHFIRE & TOWN FIRE&RESCUE	000
SES	1300 1300 039	HOSPITAL POLICE	9646 3200 9646 3333

Beverley Community Emergency Service Manager:

Justin Corrigan

9646 1200

0427 057 719

Beverley Station Arts presents

Movie Night on the lawn

Saturday 11 January
The Sapphires'

**Beverley
Platform
Theatre**
120 Vincent Street

**Gates open
at 6.30pm**
**Movie Screens
at 7.45pm**

BYO Picnic & Drinks

Kiosk sales:
Ice-creams, Snacks
& Cool Drinks

Tickets @ the gate
***** PRICES *****

Adults: \$10
Kids 5 - 15 yrs: \$5

**Coffee Van
Available**



Best Aussie Movie of 2012

**Bring your own rug and picnic and
enjoy a movie night in the picturesque
Outdoor Platform Theatre**

Based on a true story, this musical, comedy, drama appeals to all age groups. The film is about four indigenous women, Gail (Deborah Mailman), Julie (Jessica Mauboy), Kay (Shari Sebbens) and Cynthia (Miranda Tapsell), who are discovered by a talent scout (Chris O'Dowd), and form a music group called The Sapphires, travelling to Vietnam in 1968 to sing for troops during the war. This movie will have you singing all the old time favourites. Laugh and cry as you follow the story of these talented Australian women. Get a group together and enjoy a movie night under the stars.

Rated PG running time 1 hour and 38 minutes

For more information contact 0419 040 063



BEVERLEY YOUTH (2007 - 2013)

Beverley Youth was born in the back corner of the mind of Lyn Kay. She began as a meeting place for the young people of the town, a social group with very few resources who met in an old tin shed every Friday night. Before this, the youth of Beverley had nowhere to go to just 'chill' with their friends, or meet new people who moved into town.

Over time, resources such as chairs, lounges, televisions and DVD players, computers and even a juke box magically appeared! There was a fridge for cold drinks, chips and lollies to buy, music basketball hoops and balls, fans for a cool breeze on hot nights and gas heaters to warm you in the winter. And a water cooler - if you didn't want junk drinks you could have a drink of cold water - no charge! The pool tables and air hockey - no room for them at home, but you could always have a game at Youth!

Let us not forget the Discos' - there were inflatable toys for the young ones, dance instructors, clowns and magic tricksters who let you play with their toys and showed you how to use them.

Karaoke - what a blast that was! Who knew there were so many wonderful voices among our youth, just waiting for the opportunity to sing out loud, with real microphones, not the old hairbrush variety?

Every August when the Show came around, there were bungee runs, bouncy castles, sumo suits and the bucking bull. All that fun and for free - and if you helped out with running them, you also got a free drink and a hamburger!

There were art classes; just look around you at the paintings on the walls, created by our youth, under the guidance of Lyn and her 'Band of Sisters', the Beverley show banners which hung in the main street, the Anzac Banners and the one painted and hung for the Perth Royal Show.

Justice Crew are so 'yesterday' - but not when Lyn took a bus load to Northam for workshops - they were 'fully sick' back then! There were bus trips to various destinations for ice skating, roller blading, fish and chips at the beach and school holiday camps - none of which cost an arm and a leg!

To misquote Sir Winston Churchill 'Never in the History of Human Endeavour, have so few, given so much for the benefit of so many.'

Lyn and her ever changing team (except Robyn, who seems to be in everything) have provided so much for the youth of Beverley, and asked for so little in return. Respect, co-operation, and just a little bit of appreciation, may have saved the life of Beverley Youth. But in this current climate it seems to be all about Me, my 'street cred' and Me! Oh, and Facebook!!! Watch this space!

There is a song for every situation and this time it is 'you don't know what you've got till it's gone!'

While the youth of this little town are what to do with themselves, Lyn and Robyn will be enjoying the extra time with their friends and families. Thank you both for your time and efforts, enjoy you deserve it!

R.I.P. Beverley Youth

BEVERLEY TRANSPORT SERVICE

Your local carrier for over 30 years.

**GRAIN, FERTILISER, LIME, HAY, WOOL AND
GENERAL TRANSPORT**

**Agents for
Optima Agriculture
Supply and cart of Lime products**

**Garry & Sarah Miller
Ph: 9646 4066 or 0428 464 066
miller@reachnet.com.au**

**ROYAL ANTEDILUVIAN ORDER
OF BUFFALOES**



**GLE (Inc)
QUAIRADING BEVERLEY NO.163**

We meet the first Wednesday of every month at the Masonic Lodge, Hunt Road, Beverley

*The objects of our order are
Philanthropy and Good Fellowship.*

For more info contact
Bill McDonald on 9646 0746

Beverley Soaring Society Update



On January the 9th 2014 the skies over Beverley will be the scene of a battle for aerial supremacy as up to 30 of the best glider pilots in Western Australia fight for the title of State Champion.

This event will be visually spectacular as each day over 30 gliders launch from the Beverley airfield then circle overhead stalking each other as they wait for the signal for the race to begin.

The Beverley Soaring Society is hosting the event which will be run over an 11 day period. The pilots will be flying state of the art hi-tech sail planes capable of maximum speeds of 300 km/hr.

Every day of the competition the pilots will be set a cross-country task in excess of 200kms along the Avon Valley and across the Wheatbelt to the east of Beverley. The fastest pilot on each day will score the top points and the pilot with the most points at the end of the 9 day competition will become the new State Champion. Beverley Soaring Society instructor,

Greg Beecroft , is the current Australian Champion and is the firm favourite to claim the honours this year. However the competition will be tough with the best pilots from around the state also keen to claim victory.

Every year there is a competition amongst over 600 gliding clubs around the world. The goal is simply to see who can fly the most kilometres within the timeframe of the competition. The flights are recorded using satellite GPS technology and the data is uploaded to the internet. The OLC (online competition) as the name suggests allows any gliding club whose

members can access the internet to post their flights to the OLC website. Pilots and clubs then compete to see who is best in the world.

At the time of writing Beverley Soaring Society is leading the world for the second year in a row with over 74,000kms flown since the competition opened in October. Every weekend Beverley pilots are navigating their way around the Wheatbelt logging individual flights ranging from 300 to over 1000kms powered only by the sun and the thermal updraughts it generates. With an active flying membership of 120 pilots the Society is the largest gliding club in WA and attracts a lot of interest from interstate and overseas visitors . Each weekend also sees a steady stream of local WA visitors who come to experience the exhilaration of silent flight above our stunning Wheatbelt country.

In 2013 Beverley Soaring Society celebrated its 40th birthday. From its humble beginnings with a few dedicated enthusiasts the society has grown to one of the largest gliding clubs in Australia and has now put Beverley front and centre on the world stage. The competition still has several months to run so Beverley pilots will be in the sky each weekend to ensure they keep the name of Beverley out in front leading the rest of the world.

COUNTRY LINE DANCING



Every Thursday
9.30am to 12.00pm
Beverley Town Hall

Enquires: Jan
9646 4041



Travelling Overseas or around Australia?
To book a holiday of a lifetime
Contact your local travel professional
Catherine Riches

Tel: (61)8 9647-2173 Email: broker3@bigpond.com
Travel Associates Australia Pty Ltd - Licence Nbr:9TA1188
Member of Travelscene American Express

BEVERLEY SWIMMING POOL

Apologies to everyone for the forced postponement of the annual "Teddy Bears Picnic". We decided that an event this big requires an enormous amount of time and effort deserves 100% attention. Due to numerous reasons including a home relocation it was decided to reschedule it for Sunday 2 March 2014. So dust off the teddies and be prepared for another huge family event for the young ones.

After returning back to Beverley after a 7 month stint in Newman I've been upset at the current rise in crime here. Our pool has been targeted as well as other businesses, sports clubs and even some of my personal friends have been victims. At risk of stealing Ian & Ian's thunder as a Municipal Law Enforcement Officer, we as a community need to look out for each other. If you think something doesn't look quite right then your first instinct is usually correct, challenge them. Please remember to only do this if you feel safe to do so, you can always report a suspect to the Police and remain anonymous. Violence in and around our pool is NOT tolerated and will result in a permanent banning. The one comment I received from concerned parents when I first arrived here 3 seasons ago was how secure they now feel to leave their children at the pool. We have a no tolerance for any anti social behaviour and it is dealt with promptly.

My fantastic morning swimmers are still going from strength to strength. Apart from a slight drop in numbers at the beginning of the season (thanks Jim and Helen) we are all back as one happy family. I'm sure they are getting younger and younger and it's not botox. Please feel free to tap into their secret fountain of youth and join us every morning 6am to 7am.

Swimming Club have wound down for a well deserved Chrissy break. Numbers are huge this season but their is still a spot or two available. Please feel free to pop in to the pool for details. I'm currently making plans for regular Friday twilight pool parties for February (weather permitting). This will give the old youth group a chance to get together and of course benefit our swim club. I can finally see the funny (if not ironic) side of the December parties. Never again will I ever ask that question: "what could possibly go wrong" ???

Congratulations to Mrs. Tess Hawke for organising such a fantastic day of water sports activities for the lower Beverley PS earlier in the month. The Education Department made it almost impossible for this event but with sheer will and determination she managed to pull off a brilliant, flawless day. My personal message to the Education Department is let go of the reins and allow teachers to expand outside of the class. The only ones you are hurting with your over protectiveness is the students themselves...Rant over !!!

Finally to everyone that welcomed me and my family back to Beverley so warmly. "On behalf of Emily and myself we would like to extend our sincere thanks to you all". We were humbled and even embarrassed at the love and respect we received from people that don't even swim at the pool. It certainly explained why we felt homesick for Beverley while we were up North. Have a safe and wonderful Christmas and a good new years. Pool motto for 2014...There are no strangers at Beverley pool, just friends you haven't met yet.

Brad M.

Thank You

John Islip thanks his Beverley friends and neighbours for their support and condolences on the passing of his beloved Tess Valli.

Special Thanks to Barry, Pauline, Fred and Bette for their work in her garden.

This town is such a special place live.

Wanted

Female pup,
black/tan kelpie or
kelpie/border collie cross.
Contact Ron 0429 646 020

Season's Greetings from the Beverley R.S.L

The Committee of the Beverley Sub-Branch of the R.S.L wish all our members, their families and the Beverley community a safe and merry Christmas and happy and prosperous New Year.

We thank Beverley for your support in 2013 and look forward to sharing social and ceremonial activities with you in 2014.

Next Markets: February 01 7.30am
sellers set up; 9.00 to 12.00 buyers

Next General Meeting: February 20 at
6.30pm

Membership Enquiries: 9646 0005

AVON DRILLING SERVICE

Mick Lewis
Ph: 9572 7828
Mob: 0427 814 055

Brenton Legg
Mob: 0404 708 979

**WATER BORES
BORE DEVELOPMENT
MINI EXCAVATOR HIRE
POST HOLE DRILLING**



CARPET & LOUNGE SUITE CLEANING

It's Spring Cleaning Time!

- * Carpets Cleaned
- * Lounge Suites Cleaned Like New
- * Car Upholstery & Carpets Cleaned
- * House Total Clean When Moving
- * Fire & Water Damage Clean Up

- * Stripping & Sealing Floors
- * Vinyl
- * Wood
- * Slate

Phone Colin Today on
0417 971 786
Email colgrant1@bigpond.com



*Thank you from the Family
of Val Edwards*

Allen, Michelle, Craig, Jamie and families would like to thank the wonderful community of Beverley for the offers of support, cards, and attendance at her funeral after her passing on December 02 2013.

Special thanks to Doctors and staff at Beverley Medical Centre, Beverley Pharmacy and Beverley Hospital for all your help. Also thanks to the staff in the West Wing at Swan Districts Hospital for your loving care of Mum.

Extra special love and thanks to Jenny Rayner and Mum's fabulous neighbours Bruce & Marg Peck, Peg Kempton and Mary Blechynden for looking out for her and making sure she was ok.

To all Mum's friends, thank you for the good times and laughs you have shared with her over the past 20 years (50 years in some cases) in Badminton, Weight Watchers, Bowls, Cards and many other groups. She loved being a member of the Community of Beverley and enjoyed all the friendships she developed with everyone. Hard to believe we won't hear that distinctive voice and laugh again!



ADMINISTRATION POSITION

Balco Australia Pty Ltd is a major supplier of hay and straw products to international markets. Balco is an equal opportunity employer with a strong focus on workplace health and safety and ensuring the quality of our product. We are now seeking a skilled and motivated individual to fill the diverse and interesting role of Administration/Field and Stock control within the team based at Brookton Western Australia.

Reporting to the Site Manager and Stock Controller, you will be responsible for the following;

- General Office Administration functions
- Assist Stock Controller daily Production Data Functions
- Assist Field Office record keeping
- Attend daily Weighbridge operations

To be successful in this role you must have skills central to the role e.g. good numeracy and literacy skills and be able to demonstrate a high level of computer literacy.

The successful person(s) will need to possess the following:

- Excellent Organizational and Planning skills
- High level Computer skills including Microsoft Excel and word
- Good Communication Skills
- Ability to gain co-operation from a diverse work group
- Ability to meet deadlines
- Ability to solve problems and think laterally

Relevant ongoing training will be provided to the successful candidate.

Remuneration commensurate to the position.

Telephone enquiries:

Site Manager: Mr. Garry Pattinson Mobile 0428 300 650
Plant Manager: Mr. Andrew Moseley Mobile 0428 877 575
Office 08 9642 0000

Applications:

Please send applications to:
gpattinson@balco.com.au
amoseley@balco.com.au

WORLD DAY OF PRAYER

Friday 7 March 2014

'Streams in
the Desert'

More details in the
February Blarney

BEVERLEY BAKERY



2014

We will be
OPEN AGAIN on
Thursday 23 January 2014 from 6am.

Happy New Year Everyone

GJ & VJ SEEBER
trading as

BEVERLEY PLUMBING & GAS SERVICES

Established in Beverley since 1997
Your Local Licensed Plumber and Gas Fitter
Servicing Beverley & Surrounding Districts

PLUMBING

- ★ ACCREDITED WATERWISE & ENVIROWEST PLUMBER
- ★ SEPTIC INSTALLATIONS
- ★ SEWERAGE CONVERSIONS
- ★ MAINTENANCE & INSTALLATION of all PLUMBING REQUIREMENTS
- ★ INCLUDING BACKFLOW INSTALLATION and TESTING
- ★ NO JOB TOO SMALL OR TOO BIG
- ★ HOLDS CLASS 'A' PLUMBERS LICENCE

GAS FITTING

- ★ LICENSED (UNRESTRICTED) GAS FITTER for all ASPECTS of gas
- ★ MAINTENANCE and INSTALLATION

Mob: 0418 929 141
Fax: 9647 2109
Tel: 9647 2115 (after hours)

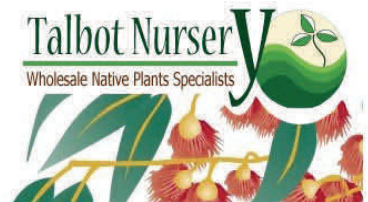
Water Auth Lic No. PL216
Gas Lic No. 386
Back Flow Lic. 103



Max Hunter's
Firewood Supplies
Ph: 96461 236



The Jarrah Bush Wood
is sold by the tonne.
Delivered in truck or
trailer loads.



Your Beverley Nursery

Native seedlings for revegetation,
bush foods and plantations.

- ✓ Our website is now fully operational - order on line!
- ✓ Tree guards and fertiliser pills
- ✓ Tree planting service available

E-mail: sales@talbotnursery.com.au
or phone/fax Lisa on 9646 1716.



Remote Area CONTRACTING SERVICES

Water Supply
Windmills & Accessories
Solar Pumps:
Sales, Service, Installation
Fencing & Yards
Trenching & Polypipe Laying

Agents for:
Mono Pumps, Ebara Pumps and
Pressure Systems

Remote Area Contracting
Services Pty Ltd
PO Box 638, York WA 6302
Tel: 9643 1047 Fax: 9643 1039

Errol Squire
0438 682 687

Dalene Davies
0427 021 146

TV Antennas

UHF CB Repairs
Digital TV Upgrades
Reception Problem Solving

Qualified communications technician.
Reasonable labour charges.
Onsite service.
Repairs and installation to some car audio, car
security, mobile phone handsfree.
Reversing camera systems for automotive and
machinery.
Based locally in Beverley

Regional Antennas Plus
ALAN PRIMROSE
0408 002 965

Thank You



Terry and Glenda would like to thank all who came and made our Carols night such an enjoyable experience. \$1,150 was raised for the Philippines Disaster Relief Appeal.

Thanks to Hamish our bagpiper, and wife, Denise, Richard on the harmonica, your singing voices and all who helped setting up and in anyway helped out. It was a great night and interesting the 'star' over Beverley was a bonus. Mark 6th December 2014 for our next carols night. Again we say thank you.

Double Birthday Wishes

**Kana Moulton celebrates turning 12
and
Charlee Fricker celebrates turning 8**

On Monday 27 January

HAPPY BIRTHDAY to you both

Unique Strokes W.A. Painting & Decorating

Reg. No. 4236

ROB BAIN

QUALIFIED LOCAL TRADESMEN

For Guaranteed Traditional
Workmanship & Prompt Free Quotes

Phone: 08 9647 2012

Mobile: 0418 904 013



'DUNPLAYIN'....PRE-CLEARING SALE, SALE

295 MAITLAND ROAD, KOKEBY
(ALL REASONABLE OFFERS CONSIDERED)

CALL 041 919 7139 TO VIEW by appt.

LEYLAND TRACTOR (bucket and forks) \$7,500 ono
TOYOTA LANDCRUISER UTE 1996 (WHITE) has 2 new spare
wheels and spare tray \$10,500 ono
FORD COURIER (unlicensed) 1994 UTE (LPG/PET) \$1,000 ono

DEXTER CATTLE (BULL, COWS/CALVES, HEIFFERS)

SHEEP (SAM/DORPER & SUFFOLK CROSS)

RAMS (SUFFOLK AND SUFFOLK CROSS)

HENS – MIXED BREEDS)

CHICKEN INCUBATOR

MEADOW HAY (SQUARE BALES)

OATEN HAY (SQUARE BALES)

RAILWAY SLEEPERS

MISC GARDENING TOOLS

ROTARY HOES

GARDEN MULCHER

CANE LOUNGE

POOL FENCING

BEE HIVES AND MISC EQUIPMENT

VARIOUS SCRAP METAL ITEMS

VARIOUS FARM EQUIPMENT

(eg: SEEDER/SPREADER/SPRAYER/RAKE/MOWER/BALERS)

WINDMILL BITS & PIECES

LOTS MORE TOO NUMEROUS TO LIST!!

EVERYTHING MUST BE SOLD..BROWSE AROUND AND MAKE
AN OFFER!

C & B TRANSPORT

DELIVERING GENERAL FREIGHT AND CHILLER GOODS

3 DAYS PER WEEK OR AS REQUIRED

TO

BEVERLEY, BROOKTON, PINGELLY

FROM

PERTH DEPOT CANNINGVALE MARKETS

PLEASE CONTACT PAUL BALDWIN

ON

0417 953 968 or 08 9646 0461

BIG ENOUGH TO DO THE JOB SMALL ENOUGH TO CARE



Beverley Lions Club

The Beverley Lions Club, has had a very busy and eventful year. On Saturday the 14 December the club held their members Christmas break up BBQ at the home of their new President. Most of our members attended, along with a few new prospective members for the coming year.

The Lions Christmas raffle was drawn by Mrs. Pat Thompson, with the lucky community winner being Mrs. Marjory Thomas, with second prize going to Nathan T, and third and lucky last a decorated Christmas cake, going to Savoy Powell. We wish to thank all who took part in the raffle, remembering all monies raised goes back into a project for the Beverley community.

The Beverley Lions Club have this year managed to provide a trailer for the community, this was only made possible by the generous donation and hard work of friends of the Lions. As many may have noticed the Lions have a sausage sizzle once a month, it is our intention to continue with our monthly sausage sizzle in the coming year. Where!! ..at the Lions kiosk, we look forward to your continued support, thank you.

We are endeavouring to get underway

in the New Year with a new project for our community, however without new and keenly committed members the Lions Club will not be able to assist our community. Like most of the service clubs, for some reason, community members are reluctant to come forward, please realise that without the service clubs, the needs of our community will fall grossly short of our expectations. I ask that we all give serious thought to joining a service club in the coming year, there is a service club in our community for you. Where are the young people? Do you find meetings boring? Well, come along and brighten the meetings up, we all want your much needed input.

On this note, I have the upsetting job of reporting to the community that for the first time in a lot of years, the Lions Club will be unable to support our community on Australia Day this year. It is with great regret that we are not in a position to run the free sausage sizzle at the Beverley Pool. Once again this being because of the lack of able members. Please take this on board, come join the Beverley Lions Club,

WE NEED YOU. Let's hear you roar...

On behalf of all the members, we wish all our community a very HAPPY AND SAFE CHRISTMAS SEASON...SEE YOU IN THE NEW YEAR.

NEXT MEETING
Thursday FEBRUARY 20th at 6.30pm
G. Courtney - President

BEVERLEY PATCHWORKERS AND QUILTERS



This photo shows our happy quilters on the final day before we stopped for the Christmas break. We had a pleasant day despite the heat outside, mainly chatting and hearing of everyone's plans for Christmas. Jan our secretary presented us all with a lovely cup bag she had made as a Christmas gesture. Thanks Jan. We also remembered some our ladies who have birthdays during the Christmas season with a Dutch Apple cake made by Joy, and also some yummy shortbread baked by Betty.

We held a very successful cake stall outside the IGA on the first Saturday in December. Thank you to the community for your support of this event.

Our Christmas lunch windup at the Freemasons Tavern it was a pleasant day out with eleven members present.

A committee meeting at the home of Denise was productive in that we planned a few activities for 2014, The main one early in the year will be a display of quilts at the Dead Finish during the Easter weekend.

Quilting will resume at our rooms at Avondale on the first Tuesday in January. Everyone in the community is welcome to join us, just bring along your sewing or come along and learn patchwork and quilting. We have lots of fabric in store to get you going and there is always someone ready and willing to teach any newcomers.

For any information on the club, or if you need us to answer any questions, please contact:
Catharina Turle on 9646 0876
or Jan Sherwood on 9646 0796



York Estate Agents – (Beverley Division)

Local Residential & Rural Experts, honest and caring for your requirements. Whatever you are looking for, be it your first home, or retirement home, a hobby farm, a dream block of land or investment.

We can help with a can do Professional Attitude.

Contact the Team at York Estate Agents for all your Real Estate requirements. Office: 72 Avon Terrace York WA 6302

Residential: **Helen Stubing** 0407 964 611 Your Local Sales Rep
Rural: **Michael Bawden** 0403 268 158 FREE Appraisals
Rentals: **Jenette Callaghan** 0418 929 011
Office: T: 9641 1335 F: 9641 1334

Helen: Email: stubing@oceanbroadband.net
Office: yorkfn@westnet.com.au
Web: www.yorkfn.com.au

**Beverley Garden
and Tree Society**

Forty four members and friends gathered at the Freemason's for our Christmas Lunch. Amanda and Greg did us proud and a good time was had by all.

Joy Burrows and Reg Behn won the raffle prizes and Betty and Morag won the door prizes.

Thank you's were expressed to Erica, Delys, Kingsley and Foxy for their help during the year.

We break now for the summer and the next meeting will be in March. Time and day to be announced in the Blarney.

We wish all members and friends a happy new year and safe travelling.

PRESIDENT
Betty Cable 9643 1043
SECRETARY
Dalene Davies 0427 021 146

Below: Dead Finish Museum Gardens



BEVERLEY NEWSAGENCY

135 VINCENT STREET, BEVERLEY
9646 1142

**WE WISH YOU ALL A VERY HAPPY, SAFE
AND PROSPEROUS
NEW YEAR**

**BACK - TO - SCHOOL
STATIONERY
NOW AVAILABLE**

TERRIFIC CATALOGUE SPECIALS

**BRING YOUR BOOK LISTS IN & WE WILL "PICK & PACK" YOUR
REQUIREMENTS FOR YOU. PAY WHEN YOU COLLECT OR LAYBY.**

BLECHY'S TYRE AND BATTERY

"Change of Ownership"

Michael and Cathy Blechynden are pleased to announce the sale of the business to Allan and Sally Fleay of York.

The takeover date is Monday 03 February 2014.

We wish Allan and Sally every success with their new venture. We take this opportunity to thank all our loyal customers for their patronage over the last 16½ years.

Regards Michael and Cathy Blechynden

ChemDry®
Drier. Cleaner. Healthier.™
Betta Finish



Superior carpet
& upholstery
cleaning

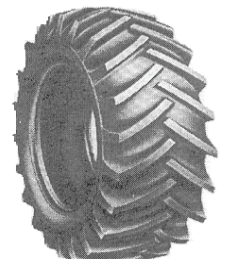
Freecall 1800 017087
bettafinish@wn.com.au
Fax 08 96225473



**CLOSED from
13th January 2014 to
28th January 2014
INCLUSIVE.**

**BLECHY'S TYRE
AND BATTERY**

City Prices



All Major Brands

Second Hand

Batteries, Repairs, Fitting, Balancing

Bridgestone Preferred Dealer

Ph/fax Mick on 9646 1607 or a/hrs 0400 804 045

48 Dawson St.



(Old Telecom shed)



Dawson's Concrete & Reinforcing

"Your Local Beverley Concreter"

- Concrete Formwork & Steel Fixing
- Driveways, Shed floors, Maintenance pits, Silo pads, Super sheds, House pads
- Fully mobile service
- Over 30 Years Experience
- 7 Days A Week
- Professional, Reliable Service

Phone for a Free Quote

SANDY DAWSON
Mobile: 0417 375 221
Email: pameladawson@bigpond.com

SAMBA - Card Game

Welcome any ladies interested in learning the card game

WHEN: Saturdays **TIME:** 1.00pm **WHERE:** CWA Hall, Dawson St.
Afternoon Tea provided
Enquiries 9646 1271

BRIDGE - Card Game

If you would like to come along and enjoy a game of bridge.
We welcome all new members to join us.

WHEN: Mondays **TIME:** 1.00pm **WHERE:** CWA Hall

Countryside Memorials



Cast Stone
Granite
Marble
Plaques

Added Inscriptions
All Repairs and Restorations

25 YEARS PROFESSIONAL EXPERIENCE
FREE DESIGN AND QUOTE

Servicing All W.A. Country Areas

9622 5544

OXTER SERVICES

www.oxter.com.au

oxter@westnet.com.au



Servicing Beverley, Quairading
and Brookton

For all your Electrical & Solar needs
Please call

KARL SMITH

0429 887 535

PO Box 2 Beverley WA 6304

Email sales@beverleyelectrical.com.au

EC 006578

ABN 86 966 138 620



COUNTRY WOMEN'S ASSOCIATION
CWA - Beverley Branch

It has been a very busy year for our members with several on the sick list and others away but our Christmas meeting saw a total of twelve members attending, following on to a our pre Christmas lunch and time for fellowship and Christmas giving.

Highlight for December had to be the Card making day conducted by Emma, who generously supplied her time and materials for our ladies to create their own version of beautiful cards. It was a really successful day and it is hoped that another will follow early in the new year when more time can be made available for card making, fellowship and a shared lunch together.

Five Beverley ladies attended Brookton CWA's Christmas Lunch, joined by Brookton and Aldersyde ladies and the CWA State President, Mrs. Sarah Kenny and State Treasurer, Marianne Hasson who was originally a Brookton resident. Mrs Judy Yeo was presented with a 60 year service to CWA Certificate and other ladies with Loyal Service Awards.

Each year CWA donates seven Citizenship Awards to the Beverley District High School. Congratulations go to 2013 recipients: Reynold Indich, Roy Jones Dilena, Stevie Grossmith, Georgina Fisher, Rebecca Grover, Eirene Ballesteros and Michaela Quartermaine.

We welcome new member, Olwyn Barker to our branch and hope she will enjoy being part of the CWA membership in Beverley.

On behalf of President, Gracie Courtney and all members of Beverley Branch we extend sincere best wishes for a happy and joyous Christmas to all in Beverley - May you enjoy safe travel and special time with family and friends and look forward to a great year ahead

Next meeting of CWA will be held at the CWA Centre on Thursday 13 February, 2014 commencing with Morning Tea at 10.00am followed by the February Monthly meeting. There will be a "Bring and Share Lunch" followed by the Annual General Meeting with Election of Office bearers for coming year.

New Members are invited to join us. For enquiries – please contact
President, Gracie Courtney on 044 7763 149
Secretary, Lorraine Sims on 9646 1243 or
Treasurer, Teresa Reid on 9646 0979.

Lorraine Sims - Branch Secretary.



WG CEILINGS

Specialising in:


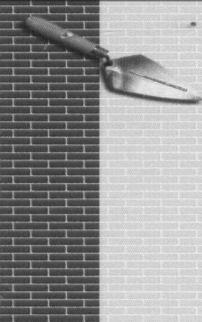
- Gyprock Fixing & Flushing
- Cornice Installation & Repairs
- Sagging Ceilings & Removal
- Cracks in Ceilings & Walls
- General Flushing & Repair

Phone Wayne Giesemann
0413 091 109

Mews Electrical Service
Lothar Mews
Electrical Contractor Lic. No. 000797

PO Box 429
Beverley WA 6304

Ph/ fax: 08 9646 1918
Mob: 0419 851 934

D.J. YATES

*BRICK & STONEWORK RESTORATION
AUTHENTIC REPOINTING OF MORTAR
RISING DAMP RECTIFIED
PROPERTY MAINTENANCE*

PHONE DAVE ON 0419041542
A/H 96412868

QUEEN Tribute



Saturday 15 February 2014

Starring Thomas Crane and Bohemian Rhapsody

Beverley Platform Theatre

120 Vincent Street, BEVERLEY

Outdoor Event

****Tickets** \$40 pre-booked or \$45 at the gate**

Under 15's Half Price

Online: www.trybooking.com/DWFX
or Beverley Newsagency

Gates open at 6.30pm

Show begins at 8pm

Licenced Venue - Strictly NO BYO

Under 18's to be accompanied by parent/legal guardian

Food and Coffee Vans

Information: www.beverleywa.com

Contact: 0419 040 063



Queen and Freddie Mercury hits from the '70's through to the '90's, with all the flamboyance and theatrics of the great legend.



BEVERLEY STATION ARTS
GALLERY & PLATFORM THEATRE

For Immediate Release

ABC Radio & TV presenter Chris Ferreira Sustainability expert comes to Beverley

Meet award winning ABC Local Radio & TV presenter and Director of the Forever Project Chris Ferreira at the Heavenly Hectares workshop to be held on **Saturday 15 February 2014** at the Beverley Amenities Building Beverley Sporting Ground starting at 9.30 am and concluding at 12.30 pm.

This FREE, 3 hour workshop - How to design your property

Principles discussed during the workshop include fire safety, climate change resilience, nutrient and water wise landscape management, pasture establishment and management, land care techniques and strategies, bush regeneration, sustainable weed and pest management, principles of property planning - all this and more! Information that is current and relevant to your journey as a small landholder in the Avon.

Above all you will have an opportunity to network with other landowner delivers these **free** workshop for small property landowners with great Humour.

About Chris Ferreira



Chris has helped over 12,000 small landholders get the best out of their small farms through the award winning Heavenly Hectares courses he co-founded in 1997. Through these workshops Chris aims to inspire and empower small landholders to be responsible stewards of their land. His delivery style combines humour with practical advice that will guarantee you an unforgettable learning experience. Chris's innovative approach is based on actual on-ground experience. He has been a leading exponent of sustainable land

management in WA for the last 22 years and delivers these

free workshop for small property landowners with great Humour! In 2003 Chris won the Centenary Medal for service to the environment.

This 'Design your Future' - Heavenly Hectares workshop is are jointly delivered by Avongro and The Forever Project with funding from the Australian Government's Caring for our Country initiatives, The Natural Disaster Resilience Program, the Department of Agriculture & Food's Small Landholders Information Service and the Shire of Goomalling.

Contact for Registration

A light supper will be provided. It is important to register for these workshops for catering purposes.

Rosanne Scott
Phone: 0458 015 361
email: avongrowa@gmail.com

Be sure to RSVP to guarantee your spot at these very popular workshops.



CARING FOR OUR COUNTRY

This project is jointly delivered by Avongro and The Forever Project with funding from the Australian Government's Caring for our Country initiative, DAFWA, The Natural Disaster Resilience Program and the Shire of Kellerberrin

SEMCC
STATE EMERGENCY MANAGEMENT COMMITTEE

GOVERNMENT OF WESTERN AUSTRALIA

Department of Agriculture and Food



HEAVENLY HECTARES

"Design your Future" - From your property to your Community !

DATE & TIME

Saturday 15 Feb 2014
9:30 am to 12:30 pm

PLACE

Beverley Amenities Building
Forrester Street, Beverley

Award winning ABC Local Radio and TV presenter Chris Ferreira delivers his **3 hour**, entertaining fast paced intro to creating sustainable rural properties.

Topics include

Fire Safety , Bush Regeneration , Climate change resilience
Improving stock management,
Landcare techniques and strategies
Pasture establishment and management
Sustainable weed and pest management
Nutrient and waterwise landscape management
Biosecurity (ie weed, pest and disease management)
Property Planning and other adult learning opportunities
Diversification Options (eg agroforestry for small properties)



Since 1999 The Forever Project has facilitated over 1800 property plans for properties located in the Swan-Canning, Avon, Peel-Harvey, Geographe, Augusta-Margaret River & Blackwood Catchments

TO REGISTER FOR THIS FREE WORKSHOP:

Contact: Rosanne Scott avongrowa@gmail.com

Mob: 0458 015 361



Seasons Greetings

We at Beverley Station Arts trust that all readers had a very Happy Christmas and wish to extend a thank you all for your patronage during 2013. An interesting quote came this way that we'd like to share as it sums up why and what we do at the Station:

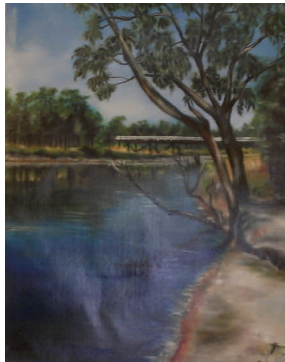
"The word 'art' is something the West has never understood. Art is supposed to be a part of a community. Like, scholars are supposed to be a part of a community... Art is to decorate people's houses, their skin, their clothes, to make them expand their minds, and it's supposed to be right in the community, where they can have it when they want it... It's supposed to be as essential as a grocery store... that's the only way art can function naturally." (Amiri Baraka)



PHOTO OF AIR DANIELLE SMITH at work in the Gallery Studio and Danielle's paintings of Local Interest commissioned by Dr. Emmanuel Awogun.



We take this opportunity also to thank the wonderful businesses of Beverley that contributed to the Christmas raffle to be drawn at the Family Christmas Concert:



Attewells Chartered Accountants, Avon Rose Tearooms and Collectables, Avon Trading, Beverley Bakery, Beverley Newsagency, Beverley Pharmacy, Beverley Supermarket and Liquor, Elders, Freemasons Tavern, Fantasy Garden Creations, Hotel Beverley, River Gum Valley Lavender, Shire of Beverley, T-Bone Butchers, TM Hair Design, WFI Beverley. Also thanks to the Beverley Community Resource Centre for printing the programmes.

Station Gallery

Thankyou to those who contributed to Kathryn McLean's cultural planning project - it certainly helps to have community input and now there is some good material to work with when composing a vision for Beverley Station Arts. Photo Insert: Let's Do Lunch, Kathryn, Ella and Carly Veitch.



Artist-in-Residence

Our artist for December is Danielle Smith, a young lady from California, USA. Having recently graduated with Bachelor of Fine Arts for Painting and minor in Writing and Literature, Danielle was hoping to gain life experience as well as artistic experience in our part of the world and be influenced by our culture. Before coming to Beverley she had spent a month's residency in China so at least in Beverley there was no language barrier and she soon had commissions for portraits and landscapes to keep her busy, plus an exhibition of her works on the night of the Christmas Concert.

For the months of January and February we have another young artist Jasmin Chouikha from Portugal staying at the Station with her little daughter. This is her second visit to Beverley so she knows what to expect and we wish her a pleasant and fruitful stay during these hot summer months. As in previous years the gallery will be closed for the month of January, but that doesn't mean you can't venture beyond the clock arch entry. Visitors are always welcome to look around the grounds and picnic if they wish - and if Jasmine is in attendance I'm sure she would open the gallery for newcomers.

Artists in Residence programme for the remainder 2013 and 2014:

December - Danielle Smith (California, USA)
January & February - Jasmin Chouikha (Portugal)
March - Gabby Laurent - photographer (UK)
April - Janet Pfeiffer - mixed media artist (Perth)
May - Lisa Reilly & Graeme Burge - ceramicist (Perth)
June - Marlish Glorie - writer (Perth)
September - Dave & Sandra Conlin - watercolourist and James Larkins
printmaker (Perth)
October - Mervyn Beamish - artist (Perth)

For further information regarding residencies keep an eye on the Bulletin and/or contact Artist in Residence Coordinator Marylou Hutchinson on 96471027 / 0427085511 or email: hutchinson@wn.com.au

If you wish to become a member of Beverley Station Arts Inc (Friend of the Station) please see treasurer Pauline at the Newsagency, phone 96461042. Membership forms can also be downloaded from www.beverleywa.com (NB cheques to be made payable to Beverley Station Arts) and send to PO Box 112, Beverley 6304.




Beverley Station Singers

The *Station Singers* (hardly Beverley Station Singers now that half of them hail from Brookton!) have been practicing for the Christmas Concert on Dec 21st, and a few also performed with Kelly Newton-Wordsworth at her Poets' Picnic in Williams on the 11th December. An invitation has also been extended to sing at Camelot in Mosman Park on 22nd December.

Anyone interested in joining the choir contact Sarah Miller - Ph 96464066 or email miller@reachnet.com.au

Platform Theatre

 The band 'Chain REACTION' played well into the night of November 30 and much fun and dancing was had by the 200 people who came through the gates. Phil and di Firkin said they had great time playing to the crowd and I hoped all enjoyed the evening. They also reported how they were 'really impressed with everything that has been done with the whole venue setup, and of course special mention to Steve & Tim for doing such a great job on the sound'. It's nice to have good feedback.

By the time this is printed the school's end of year presentation night will have been and gone, and probably the Station Arts Family Christmas Concert on Saturday 21 December as well.

Due to a poor attendance at the Australia Day concert 2013, plus very tired children following celebrations at the pool, we have decided to forgo Australia Day and have a movie night instead earlier in January. So, our next event at the Platform Theatre is the screening of "The Sapphires" on **Saturday 11th January**. Thankyou to those who responded to our plea on our Facebook page asking for movie suggestions.



January Movie Night

- WHAT: "The Sapphires" PG rated
- WHERE: Platform Theatre
- WHEN: **SATURDAY 11 JANUARY**
- TIME: Gates open 6.30pm, Screening times 7.45pm
- BYO picnic/drinks
- Kiosk sales - snacks/ice creams/cool drinks
- Coffee van
- COST: Tickets at the gate - \$12 Adults, \$10 Friends of the Station, \$6 Children 5-15yrs

🎵 **QUEEN & FREDDIE MERCURY TRIBUTE** by *BOHEMIAN RHAPSODY*

Yes!! Coming soon to the Platform Theatre are Thomas Crane and his band Bohemian Rhapsody performing Queen and Freddie Mercury hits from the 70s through to the 90s with all the flamboyance and theatrics of the great legend.

Press release presented by Entertainment Direct:

Thomas Crane made his appearance on Australia's Got Talent and in 2011 made it to the finals as a tribute artist to the late GREAT Freddie Mercury. Since then Thomas's absolute talent is taking him around the world touring with his band Bohemian Rhapsody playing the best of Queen and Freddie Mercury hits. There is only ONE Queen tribute band in the world that does justice to Queen and Freddie Mercury; with over four million hits on YouTube, you be the judge! Queen Fans all over the world ask WHY Thomas Crane has yet to perform with the original members? One day soon, Thomas is ready trust they are, LOL.

http://www.youtube.com/watch?v=a7350WuCJk&list=PLqn5fsArNnFAR96TvQJziRmXdZXwtgytF&feature=mh_lolz

http://www.youtube.com/watch?v=a7350WuCJk&list=PLqn5fsArNnFAR96TvQJziRmXdZXwtgytF&feature=mh_lolz

- WHAT: QUEEN & FREDDIE MERCURY TRIBUTE by *BOHEMIAN RHAPSODY*
- WHERE: Beverley Platform Theatre
- WHEN: Saturday 15 February
- TIME: Gates open 6.30, Entertainment Commences 8.00pm
- COST: \$ \$40 pre-booked or \$45 at the gate. Children under 15 half price
- TICKETS: Available from Beverley Newsagency or ONLINE BOOKINGS: www.trybooking.com/DKMN
- Food and coffee vans

Licensed Event, Strictly NO BYO, Under 18's must be accompanied by parent/legal guardian

If you would like to be included on the email list for notification of coming events (so you can forward to friends), email secretary Sarah Miller miller@reachnet.com.au

Dates to mark on your Calendar:

December: Saturday 21st VARIETY CHRISTMAS CONCERT - Hip-hop Urban Youth Crew; Choir; 3BOB Ban

January: Saturday 11th January 2014—MOVIE NIGHT "The Sapphires"

February: Saturday 15th QUEEN & FREDDIE MERCURY TRIBUTE by *BOHEMIAN RHAPSODY*

March: Saturday 8th OPERA ON THE PLATFORM

April: Saturday 5th DRAMA PRODUCTION

April: Thursday 17th - Monday 21st April 46th ANNUAL ART PURCHASE EXHIBITION

(Presented at the with OFFICIAL OPENING Thursday 17th April)

April: Saturday 19th PLATFORM EASTER MARKETS - art & craft, gourmet food & music.

June: Sunday 1st CALENDAR GIRLS (to be presented at the Beverley Town Hall)

Station Gallery Open Hours

(CLOSED FOR JANUARY)

11.00am - 3.00pm, Thursday, Friday, Saturday and Sunday

Wishing all readers a very HAPPY NEW YEAR.

Jenny Broun, President,

Beverley Station Arts

9646 1500 / 0419 040 063 / brounj@westnet.com.au

Photo on right: Santa on his way to the Christmas Concert





Special Report on “Olden Days”

For about twenty years the Beverley Historical Society has, each year, offered a ‘hands-on’ learning experience to all Year Two pupils of Beverley School at the Dead Finish Museum.

The students work in small groups and experience housekeeping or school activities as carried out in times past. In recent years these activities have usually included Dressing Up; a Handwriting Lesson; Cleaning Silver and Clothes Washing by hand. Students move from one room to the next so that they all have a short turn at each activity.



Clothes from another era are ready for Dressing-Up.



Old school desks (& The Strap!) are ready for a handwriting lesson with nib pens & ink.



Tin tubs & wash boards ready for hand-washing dirty clothes.

Late in October 2013 we were pleased to welcome this year’s Year Two students with their teachers.



Young fingers are busy polishing up the tarnished silver.



Scrubbing hard.



Some assistance is needed to hang wet clothes with dolly pegs.

The aim of the exercises is to give youngsters an idea of what it was like to live in times before electricity, before in-door plumbing, before plastics, before stainless steel and other labour-saving inventions.

The sessions are followed by a brief look at the remaining Museum rooms and the garden.

The morning ends with some refreshment before each student departs as the proud owner of a piece of history – a shiny pre-decimal currency coin –an Australian Penny.



Children are encouraged to find the date on the penny and relate that date to birthdays in their family.



Museum volunteers on hand to offer refreshments.



The Year Twos enjoy their snack.

For further information contact the secretary at bhsdeadfinish@gmail.com

Beverley District High School

Hello, Ciao and welcome to our last edition for 2013. Where does time go when we are having fun? I must admit the last week of school hasn't been much fun with the high temperatures and especially frustrating for farmers who are trying to get their crops off with harvest bans being imposed.

At the end of a school year, rewards come for those students who have achieved outstanding results and also for those who always give their best in all areas of their school work.

Well done to all the recipients listed below. You deserve the accolades for all your hard work this year.

Year 1 All students receive a Book Award.

Year 2

- Academic Award Zoe Shaw
- Endeavour Award Tabitha Roche
- Most Improved Award Robbie Speedie

Year 3

- Academic Achievement Mackenzie Thomas
- Academic Achievement Rebekah Aynsley
- Most Improved Award Campbell Gors

Year 4

- Academic Achievement Harrison Bowden
- Endeavour Award Anneliese Mellick
- Most Consistent Award Abbey Cooke

Year 5

- Academic Achievement Stella Wilkinson
- Academic Endeavour Billy Byworth
- Most Improved Kayla Lamb

Year 6

- Academic Achievement Hannah Bowden
- Endeavour Award Declan Mellick
- Most Improved Award Thomas Cleland

Year 7

- Academic Achievement Millie Byworth
- Endeavour Award Amber Eggers
- Most Improved Corey Worster

Year 8

- Academic Achievement Jessica Appelbee
- Endeavour Award Eirene Ballesteros

Year 9

- Most Improved Vernetta McKelvie

Year 10

- Most Consistent Kaitlyn Devenish

Sport Awards

- Primary Kelvin Quartermaine
- Secondary Vernetta McKelvie

Woodside Sci Tech Science Awards

- Year 5 Elsie Grossmith
- Year 6 Evie Wilkinson

BDHS 2013



Italian Awards

- Lower Primary Kirsty Noonan
- Middle/Upper Primary Hannah Bowden

Indigenous Achiever of the Year

- Year 8 Michaela Quartermaine

CWA Awards

- Ed Support Reynold Indich
- Year 3 Roy Jones Dilena
 Stevie Grossmith
- Year 6 Georgina Fisher
 Rebecca Grover
- Year 8 Eirene Ballesteros
 Michaela Quartermaine

Lions Award

- Year 7 Candice Treasure

Masonic Lodge Award

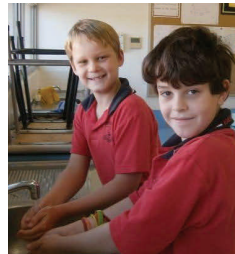
- Year 10 Cameron Grover

Moorditj Boodjar Award

- Year 6 Oscar Cooke

Hilary Smith Award

- Year 7 Lachlan McLean



Book Award Donors

We would like to sincerely thank the following businesses and people who sponsored our book awards. Thank you very much.

Masonic Lodge	ANZ Beverley	Lions Club Beverley
CWA Beverley	Shire of Beverley	Mr & Mrs G & S Smith
Woodside & SciTech Science Awards	Wheatbelt Natural Resource Management	Slater & Gartrell
Mr & Mrs L & A Murray	Mr & Mrs K & J Murray	Mr & Mrs D & S Aynsley
Mr & Mrs W & K McLean	Mr & Mrs P & K Wansbrough	Hon Mia Davies
Mrs V Vandenberg	Ms V McKelvie	Mr & Mrs T & A Cooke
Mrs B Wauchope	Mr & Mrs G & M Barrett-Lennard	Anonymous

Staffing Changes

We would like to say farewell to Ms Candice Pryde (Year 2) and Ms Georgina Critchlow (Secondary) and a big thank you for all of your work with the students this year. We wish you both all the best in your new adventures in 2014. We will miss you both.

Until next year, we wish you all a very relaxed and safe holidays with your family. If you are travelling, please keep safe.

Happy New Year (Felice Anno Nuovo) from all of us at Beverley District High School.

Sera Minchin



Lyme Disease

The Chief Medical Officer (CMO) of Australia, Professor Chris Baggoley stressed that there are a large number of people in Australia who's lives are miserable because of the Lyme disease or Lyme-like illness that they suffer.

For some it has completely altered their lives; impacting on their family, work, social lives and finances. These people are the focus and inspiration for the CMO to keep working on this problem and reinforces the need to honour the experience of Lyme patients around Australia.

Some new activities of the CMO & his department for 2014:

- a meeting of pathologists working on Lyme disease in Australia to benchmark laboratory processes.
- A meeting of medical practitioners (Lyme Literate MD's, neurologists, rheumatologists, GP's etc) who are working with Lyme patients in Australia to discuss Lyme disease.

The CMO noted that this research will be vital in helping those who are not yet convinced that Lyme is in Australia, to come to a new understanding. It will also be vital for lobbying government departments such as the Pharmaceutical Benefits Scheme to cover medications for Lyme disease patients in Australia. It was also stressed that the need for prevention of tick bites is paramount, and the CMO will be putting links to this on the Department of Health and Aging Lyme disease page in the near future.

(Taken from latest Lyme Disease Association of Australia notes).

Ticks are out & about again with the weather warming. Please take all the precautions of covering up & using insect deterrent to avoid Natures Dirty Needle.

You could be the next person to be infected with this nasty disease. Please.....if you are bitten & feel the flu like symptoms start, find a Lyme sympathetic doctor & arrange for a test. Test kits can be sourced from the Lyme Disease of Australia Association. <info@lymedisease.org.au>, The sooner you are diagnosed & suitable treatment is commenced the better your chance of recovery.

If anyone would like to know more please call or ask Jeff & Wendy Murray.

We would be happy to share any information we have with you.

BROOKTON PLUMBING

ABN: 37 675 595 336

**FOR ALL YOUR
PLUMBING MAINTENANCE
AND GAS FITTING NEEDS**

***PLUS SEPTIC WASTE
REMOVAL**

PHONE:

**SEAN 0413 480 543 or
NATASHA 0422 013 889**

PL: 7130 GF: 006947 SWR: T235

RA-AN ENTERPRISES

**All Dozer and Excavator Work
Including:
Dam Sinking
Dam Cleanout and Enlarging**

**Excavator with Wood Shears,
Tilt Bucket and
Hydraulic Grab.**

Locally Based at West Kokeby

**Phone Ray 0428 936 621 or
08 9646 4136**

Northam Physiotherapy



**Northam 8am - 6pm
Monday to Friday**

**York Cunderdin Toodyay
By Appointment**

**Ph: 9622 5040
Fax: 9622 2800**

Email: northam.physio@westnet.com.au

YORK CHIROPRACTIC

**MacLachlan Centre,
Trews Road, York**

**Clinic available every week
by appointment only.**

Tel: 9641 1500

**Dr Alexandra
[Sacha] Browne**

**B.Sc [Chiro] B.Chiropractic
Doctor of Chiropractic**



**PRIMARY HEALTH SERVICES
available to the community
of Beverley**

You can refer yourself or your child to the following health professionals:

Child Health Nurse - Phone 9646 3200 to make an appointment, Hospital Admin Staff will assist you in setting an appointment time (attendance Fridays).

Child / School Health – Phone 9646 1210

Dietetics – Phone 9690 1320

Occupational Therapy - Ph 0429 466 224

Physiotherapy – a **Doctors referral is required** – Please send to PO Box 142, Beverley or drop referral to the Beverley Hospital (attendance Thursdays)

Podiatry – a **Doctors referral is required** – Please send to PO Box 142, Beverley or drop referral to the Beverley Hospital (attendance Fridays) **

Social Work – Phone 9690 1320

Speech Pathology – Phone 9690 1321

- Services are provided at the Primary Health Building, on the corner of John and Forrest Streets, Beverley. There may be a waiting time for services.
- These services are provided by WA Country Health Service and are free of charge. (Please note that the Podiatry Service is a private practice and is not free of charge - there is a fee at first consultation but the WACHS/Beverley Health Service do not get involved in taking fee payments – only assisting at receiving the referrals for appointment. The Doctor's referrals are usually faxed to the service provider, Como Podiatry, who contact the patient by phone and make an appointment).
- If you have any concerns about your own health or your child's health and development, please phone the relevant health professional to discuss your concerns. Alternatively, you can speak to the Child Health or School Health Nurse, or your GP, to discuss your concerns and to determine the most appropriate referral.

Avon & Central Primary Health
Promoting Healthy Lifestyles

**DRUG & ALCOHOL
COUNSELLING**

The Wheatbelt
Community Drug
Service Team will
be visiting
Beverley Hospital
fortnightly.

For appointments please phone
Jackie Darby on
96211 055.



**THE
ROOF & WALL
DOCTOR
Is Back
In Town!!**

Like to have your roof replaced with new Long lengths of Zinalume or Colorbond? How about new gutters & downpipes, Insulation or a Skylight?

WE REMOVE OLD TILES, IRON, ASBESTOS & DECRAMASTIC

WE SUPPLY & FIT NEW:-

- ✓ Zinalume & Colorbond
- ✓ Gutters & Downpipes
- ✓ Insulation & Skylights

ALL RE-ROOFING WORKS
IN WA, IN EXCESS OF
\$20,000 (inc GST), CAN ONLY
BE CARRIED OUT BY A
LICENCED & REGISTERED
BUILDING COMPANY

**ROOF RESTORATIONS & CLEANING
RESTORATION OF FRETTING BRICK & STONE WALLS**

All quotes carried out on-site, by the Doc himself. We service all country areas. Get your free quote now, while we are in your area.

THE ROOF & WALL DOCTOR

16 Essex Street FREMANTLE WA 6160

Phone:- 9430 6553

FULLY GUARANTEED & FULLY INSURED

Registered with The Builders Registration Board #13172



**OWNED & OPERATED BY
THE SAME FAMILY
OWNERS FOR OVER 20 YRS**



WorkSafe Asbestos Removal Licence No:- 0037
Or Visit us on our Website: www.roofandwalldoc.com.au
Email:- roofandwalldoc@iinet.net.au
As Seen on GWN & Channel 7 "Home in WA"

**WILLS AND ENDURING
POWERS OF ATTORNEY**

A friendly service for York, Beverley and
Quairading.

John will come to your house or farm.

**JOHN MULLER LLB
SOLICITOR**

0419 899 779

Email: mullja@bigpond.com

WD & LM SLEEP
Kokeby Concrete

Specialising in

Concrete, Sand pads, Bob Cat Hire, Site and Block Cleanup (can organise grano workers)



M: 0429 461 314

passive energy systems

local specialists in

SOLAR POWER

GRID-CONNECT

OR

OFF-GRID

WIND POWER

all electrical
contracting services

the sky's the limit

call John or Marlene for a quote:

646 77 263 - info@pvenergy.com.au

100% customised to suit your
personal needs & budget!



BEVERLEY PARALEGAL COMMUNITY & REFERRAL SERVICES (BCS)

Firstly we offer our Seasonal Greetings and a Happy New Year - 2014 to all. Special thanks to our Shire CEO Mr Steve Gollan, President Dee Ridgway, Councillors, and both indoor and outdoor staff (you have served Beverley well). BCS has been serving the community, going on 18 years.

It should be noted here, that our service does not provide Legal Advice. What we do offer is: information, referrals, liaise and mediate (under authority, verbal/written), legal matters such as advice etc., are referred to lawyers and legal centres (cases listed in court can not be discussed).

Recent matters dealt with:

Fines, Infringements & Enforcements:

As unpaid fines may make one's driving licence void. Where one chooses to cut out unpaid fines, by serving prison time in lieu. Please make very sure with this department, as to what the paperwork and requirements are, and the time served and amount deducted, and the renewal of your drivers licence. The current information I received this month is, please offer a payment plan for approval before matters get serious.

Homes West Rental Accommodation:

Every week there are families, single parents, disability pensioners that are all in need of urgent or priority listed rentals. Recently, I had to speak to Homes West, about an applicant, who, was classified as homeless. The waiting list could be 3 to even 18 months. I had to supply: medical evidence as well, in order to be priority listed. In these cases, the families help out.

1100 copies each month
Beverley Blarney



**Advertise your business
here!**

**Separation, Children Custody,
Property Settlement, Visitation Rights:**

As all these matters require legal advice. Under authority, I phoned legal centres and lawyers, explained the nature of the problem and made appointments, in the presence of the parties.

Prisons/Parole Systems: A recent out of town case, where parole was refused by the parole board for an in prisoner. Parole was due, in October. I phoned the legal centre up and made an appointment for the family. It is very difficult for any family having to face such problems. This matter is very complex.

Centrelink Payments - Disability, carers, education supplement/study:

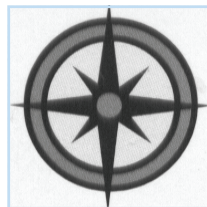
When payments are cut off, there is always a good reason. Normally one receives a (one line cancellation letter). Immediately contact your nearest Centrelink office or your local Community Resource Centre to discuss your options. Keep Centrelink posted at all times, as to any change in circumstance. According to regular TV reports which state Centrelink has the very latest IT data cross referencing equipment. Most information they receive, is from an inside source that is close to or has been to the recipient. E.g. an ex partner / ex mate etc. From my line of work, most troubling matters e.g. concern disability pensions: discuss your ability to work or not to work, with your doctor. Including your capability as to sitting, standing/walking, driving a car and so on. Often, I refer recipients for a medical report to help their case. I have also accompanied recipients to Centrelink offices, where my help is warranted.

Mal G Roberts
Town Hall, Vincent Street Beverley



To view or download a full colour version of the Beverley Blarney go to www.beverley.wa.gov.au
For advertising price rates, sizes, & deadlines

All types



All areas

ALLROUND CONCRETE

**SHED FLOORS, DRIVEWAYS, FOOTPATHS, HOUSE SLABS,
SILO PADS, FERTILIZER/GRAIN/SUPA SHEDS**

ROBBIE HIGGINSON

MOBILE: 0427 384 977

HOME: 9641 2459 FAX: 9641 2339

ABN: 26 997 512 874

PO BOX 345 YORK WA 6302

Beverley Earthmoving Contractors

40 years experience in all aspects of Earthmoving.

One stop shop for all your Septic Systems.

Supply & Install

Plumbing Licence PL 5829 Gas Fitting Licence GF 7422

ALL ASPECTS OF EARTHMOVING

House Pads Site Cuts

Block Clearing Laser Levelling

Service Trenches

To Shire and engineer specifications.

SAND SUPPLIES

Metal Gravel

BULK HAULAGE

Truck and Dog Trailer Backhoe 315 SE John Deere

Side Shift Extender Hoe

Bob Cat Loader

Forklift Post Hole Borer

General Freight ingage and over width loads credited.

Phone:

**Ron 0429 088 689 or
Lorraine 0488 087 316**

KARRADALE LIVESTOCK TRANSPORT
YORK LIVESTOCK TRANSPORT
ABN 64 054 007 721

We service Beverley, Brookton, York
& surrounding districts

Available to transport Sheep & Cattle

No job too big or small

Support the local communities

Member of ALRTA

If you need stock moved, Peter would love to
hear from you - 0428 481 281



HANDYMAN AVAILABLE

**I CAN BE YOUR 2ND PAIR OF HANDS
FOR THE JOB YOU'RE DOING**

OR

**I CAN DO THE JOB FOR YOU
WELDING, MECHANICAL, BUILDING.**

NO JOB TOO BIG OR TOO SMALL

GIVE ME A CALL

DARYLE - 0400 214 498

GYM MEMBERSHIP

'Shape up for the Summer Holidays'

Gym Memberships can be obtained from the Shire office or from
www.beverley.wa.gov.au. Beverley Gym, The Old Courthouse, Vincent St.



NEED PRACTICAL TRADE ASSISTANCE?

D & M Services

(Design and Manufacturing Services)

Solving a range of practical needs and problems..

Specialising in:

- ✓ Kitchen renovations
- ✓ Shop fitting and modifications
- ✓ Furniture restoration
- ✓ General carpentry
- ✓ Alterations & installations
- ✓ Metal based fabrication
- ✓ Motorhome and Caravan fitouts
- ✓ Pergolas, Decks & Gazebos
- ✓ Designing and planning

Guy Slingerland

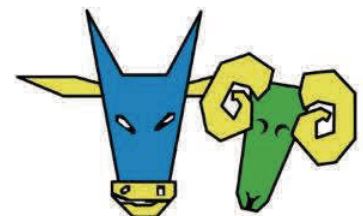
0403602335

Why Pay More?

Great Aussie Stock Aids

For all your stock supplement requirements

Effective,
affordable &
recognised
statewide.



Contact Your Local Agent

Ph: (08) 9862 6069 E: argates1@bigpond.com

www.gasa.com.au

Media Release

25 November, 2013



Thank you from the Cancer Council

After two years of Find Cancer Early in the Wheatbelt region, the pilot program wraps up this month as Cancer Council WA continues to evaluate the program to determine the impact.

However thanks to the overwhelming support from the Wheatbelt community, Cancer Council WA hopes Find Cancer Early won't be gone for long.

Karen Hansen, who has travelled across the northern Wheatbelt region delivering campaign messages through presentations, public displays, media exposure, campaign materials and word of mouth says the community is the real reason for the success.

"I couldn't do my job if people were closed off to the campaign concept of the earlier cancer is found, the greater the chance of successful treatment. Instead I have been welcomed with open arms and open doors."

The campaign was targeting people over 40 years of age from regional WA, most notably through its "say it how it is" symptom checklist using words like "pee and poo" as suggested by the community.

"It's hard to believe, but we've distributed more checklists (48,200+) than people aged over 40 from the Wheatbelt region!" says Karen.

Karen Hansen and colleague Lisa Barr in the southern Wheatbelt have also distributed over 64,000 postcards, 131 presentations, set up 62 displays, and established 330 community partnerships.

"It is those partnerships and the close contact with the community which have helped the most to spread the message from the bottom up."

Find Cancer Early has also received significant free media support in the Wheatbelt including: 13 major newspaper print articles; over 580 articles or campaign items in smaller newspapers or newsletters; plus 21 radio interviews.

Cancer Council WA Education and Research Director, Terry Slevin explains the importance of this campaign for people in regional areas.

"Too many research projects tell us people in regional areas do worse when it comes to cancer. This campaign aimed to have a go at trying to fix that. If we get it right we can save lives in the bush."

"The campaign has shown sufficiently encouraging results so far and we are now exploring every possibility to make this campaign ongoing as we don't want this to stop and end as just a pilot project."

"On behalf of Cancer Council WA, Thank you for being part of this journey to make Find Cancer Early a success."

For more information on the symptoms to look out for or tips for talking to your doctor, visit: www.findcancerearly.com.au.

Find Cancer Early is an initiative of The University of Western Australia and Cancer Council WA investigating ways to improve cancer outcomes for people in regional Western Australia.

Campaign contact: Karen Hansen Find Cancer Early Project Officer – ph. 9690 1746, khansen@cancerwa.asn.au

REFLECTING ON THE YEAR

At the beginning of a new year and while we are perhaps having a holiday or looking forward to one, now is a good opportunity to reflect on the past year and look at all the things (good, bad and perhaps ugly) that may have happened to us.

There are three areas in our life that we have regular input into and so we can use these areas to reflect on the year that was. These are:

- Family Life (the most important and a good starting point);
- The Workplace; and
- The Community Group (this comes in many different forms, it may be the sports club, theatre group, church, school council, P&C, men's shed, rotary, lions, chamber of commerce etc.)

We should always work on the context of firstly looking after ourselves, thus making sure we are in a good place to then look out for our mates.

When looking at these three areas of our life it is important to consider benchmarks that may have set, and achievements and/or failures that we have had along the way.

Our Family Life - have we fulfilled our personal goals for the year?

- Have we had some "me" time? (for blokes this is cave time, for ladies it is quite often simply shopping or getting their hair done)
- Did we have that family holiday?
- How's that bucket list going?
- Are we maintaining our passions and interests?

The Workplace

- Business and Financial Review - budgets – how did we go?
- Increasing job satisfaction
- Looking out for our work mates

The Community Group

- Volunteering, playing sport
- Are we involved?
- Are we continuing to learn new things?
- Are we a positive and helpful participant?

We sometimes take things for granted so we need to make sure we relish and appreciate our achievements, a lot happens in a year.

The benefits of reflecting on the past year are profound for our wellbeing. Some of these benefits are summarized below:

- We realize the enormous amount of things achieved (big or small) across the three areas in our life and that it is important to "feel good" about it.
- Reflecting also allows us to take a break from being in the thick of things (a real break) and reset our goals and priorities in an orderly and informed manner. This will get our energy levels going again in 2014.

Enjoy your break and holiday you deserve it.

All the best for 2014 from the team at Regional Men's Health.

Delivered by Wheatbelt Men's Health

PO Box 768, Northam WA 6401

Phone: 08 9690 2277

Email: menshealth@4blokes.com.au



VOICE OF THE AVON 101.3 FM LOCAL PROGRAMMING

SUNDAY

- 8:00 - 11:00 Sunday Morning
Coming Down – John
11:00 – 12:00 Sunday Classics
12:00 – 1:00 Soul and Inspiration – Susan
1:00 - 5:00 Blues
4.30 - 9:00 Metamorphosis – Bob

MONDAY

- 6.30 – 10.00 Monday Breakfast - Bob
10.00 - 1.00 Mustang Sally – Susan
4:00 - 7:00 Celtic Note – Joe
7.00 – 10.00 Classical Sounds - Chris

TUESDAY

- 9.00 - 12.00 Around The World – Leila
12.00 - 4.00 Countrywide – Wally
6.00 – 10.00 Old Guys Rock – Terry

WEDNESDAY

- 10:00 – 2:00 A Little Bit of Everything – Joe
4.00 – 7.00 Legends and Locals - Mark
7:00 – 9:00 Back to the Future – Frank

THURSDAY

- 9:00 – 12:00 Mustang Sally – Susan
12:00 – 3:00 Kaleidoscope – Chris
6:00 - 9:00 True Rock n Roll - Milo

FRIDAY

- 6.30 – 10.00 Friday Breakfast - Bob
10.00 - 1.00 Discography – Tess
1.00 – 4.00 Kornucopia – Karen (Kazza)
6:00 - 9:00 Friday Night Country

SATURDAY

- 5:00 – 10:00 Saturday Morning Variety
Show – Terry
1:00 – 6:00 Saturday Mix – Graham
6.00 - 10.00 Saturday Jazz

Station Phone Number 9641 2422

e-mail: radio6ycr@hotmail.com

Facebook: Voice of the Avon 101.3 FM

72.5 hours of local presenters each week.

Effective from 01 January 2014

**Thank you for your
support during 2013.
We wish you a Happy Christmas
and a Safe and Healthy
New Year.**



Do you know how to find cancer early?

Watch our videos

Get some tips for visiting the doctor

www.findcancerearly.com.au

*The earlier cancer is found
the greater the chance of
successful treatment*

OUR SERVICES

Photocopying

Photo Kiosk-Instant Photo's

Printing-A4 & A3 Colour

Binding-Wire, Thermal & Plastic

Desktop Publishing

Laminating-All Sizes

Negative & Slide Conversion

Tape & Record to CD Conversion

Send/Receive Faxes

Send/Receive Emails

Beverley Bulletin Publishing

Book Exchange

Jigsaw Loan

GOVERNMENT SERVICES

Centrelink Access Point

Government Computer Kiosk

Medicare Claim Booth

Dept. of Veteran's Affairs Info

Australian Taxation Office

Senior's Computers

Royalties for Regions information

TRAINING FACILITIES

Group Training and Workshops

One on One Training

Westlink Broadcasts

Video Conferencing Suite

OFFICE AVAILABLE

For Daily Rental

*******Suggestion Box*******

Help us to improve our services to
the community.

Have a suggestion? Then write it
down and pop it into our
suggestion box located in the
centre.



Beverley

Community Resource Centre

Your local connection

OPENING HOURS: Monday – Friday 8.30am – 4.00pm

132 Vincent Street, Beverley WA 6304

Phone: 08 9646 1600 Fax: 08 9646 1295

Email: beverley@crc.net.au Website: www.beverley.crc.net.au

TRAINING IN 2014

iPad's Explained

Did you get a iPad for Christmas and don't have a clue of where or how to start? Learn how to set up, connect to WiFi, connect your emails, take photo's and more. We are taking names now for training that will commence on *Tuesday 14 January 2014 at 10am*. If you can't make this workshop, there will be more training on *Tuesday 11 February 2014 at 10am*. Call 9646 1600 to register your interest, cost \$30 and remember to bring in your iPad.

Help I have a SMART Phone!!

Have you upgraded your mobile to a smart phone and are you confused. Smart phone's are great if you know what your doing. They can take photo's, you can email, hook up to social media, surf the net, download apps. Training is on *Friday 17 January at 2pm* and *Tuesday 11 February at 2pm*. Register your name now don't forget to mention which phone you have and bring your USB cord with you on the day, training cost is \$30.

SKYPE made easy

Learn the basics of how to install, set up an account and make a call. If you have your own laptop bring it in on the day and we can install the program directly to your own computer. Training is on *Thursday 30 January 2014 at 1pm*. Register your interest now. Please bring your laptop, charger, webcam (if you have one). You will need an email address, if you don't have one we can set one up prior to this date.

Beverley's "Great Rocky Road Off"

We had many offers from locals to be a judge, including some serious requests from our own children. On *Friday 20 December* we had 8 judges which included an international judge, Stefan de Beer, he had never heard of Rocky Road let alone eaten any. We had our local police officers, the 2 Ian's, President of The Beverley Ag Society Teresa Reid, CWA Secretary Lorraine Sims, Men's Shed representative Grant Hobbs, Student Councillor Vernetta, IGA representative Karen Pepper. We had a total of 8 entries, with the winner of the \$100 Kitchen Warehouse voucher was **Kate McLean**. Thank you to all the entrants for taking the time to enter. The judges thoroughly enjoyed themselves.



Left: The judges.



Right: The Two Ian's hard at work nom nom nom.

Proudly Supported by



Government of Western Australia
Department of Regional Development



ROYALTIES
FOR REGIONS



FREEMASONS TAVERN

104 Vincent Street Beverley WA
Phone 9646 1094

The Tavern is having a
SINGLE'S PARTY

So are you



SATURDAY 11th JANUARY 2014

7pm till late....

Boys round up your mates, and all you Single Girls head down to the Tavern for the Tav's first Singles Party.....you never know, you may meet your future partner.....

Freemasons Tavern Presents
on

SATURDAY
15th February 2014

'MUSTANG OWNERS CLUB WA'
SHOW & SHINE

11am

Car Parade - Main Street

11.30-4pm

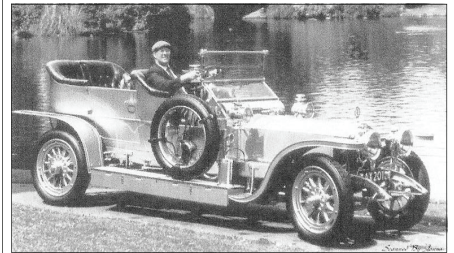
Show' n' Shine

Freemasons Tavern Frontage

DRINK WISELY HOME SAFELY

COURTESY CAR AND
DRIVER
AVAILABLE FROM
5.00pm UNTIL 10.00pm
(Except Tuesdays & Thursdays)

This service is donations only.



Please book through the

Freemasons Tavern on
9646 1094.

Donations to be placed in the
box at the hotel.

Donations will be donated to
charities.

(e.g. Ambulance, Hospital etc)

Female passengers using this service
are to be accompanied by another
adult for safety implications.



"Valentines Day at the Freemasons"
Friday 14th Feb 2014

Its time to spoil that special someone and book
in for a romantic 3 course Dinner at the Tavern.

Book in for two or with a group of friends.

The scene will be set, food will be divine, you just
bring that special someone and we're all set.

\$30pp, Bookings Essential - Call 9646 1094

(Flowers can be organised, please ring for details)



AVON VALLEY WINDSCREENS

A preferred windscreen repairer Lic MR11693

Cars, Trucks & Tractors
Replacements & Chips

Kale & Ron Robinson

0429 001 393

32 Georgiana St, York 6302

We come to you!



SUMMER TIP:
Use cupcake
cases to cover
drink glasses in
the summer and
prevent flies
from dropping in.



Use egg boxes to store delicate Christmas tree decorations



Wish all residents of Beverley a happy and prosperous New Year.

See Information that may be of interest to you.

****Part of Bill****

Western Australia

NOONGAR

(Koorah, Nitja, Boordahwan)

(Past, Present, Future)

RECOGNITION BILL 2013

A Bill for

An Act for the recognition of the Noongar people as the traditional owners of lands in the south-west of the State.

5. Recognition of the Noongar people.

- (1) Parliament acknowledges and honours the Noongar people as the traditional owners of the Noongar lands.
- (2) Parliament recognises -
 - (a) the living cultural, spiritual, familial and social relationship that the Noongar people have with the Noongar lands; and
 - (b) the significant and unique contribution that the Noongar people have made, are making, and will continue to make, to the heritage, cultural identity, community and economy of the State.

6. Effect of this Act

This Act does not—

- (a) create any right, title or interest, whether in law or equity; or
- (b) give rise to or affect any civil claim, action or proceeding; or
- (c) give rise to or affect any right of review of an administrative decision; or
- (d) affect the interpretation of any law of, or that applies in, the State.

All the best
Mal G Roberts (Adviser) and
Mitch Henry (President)



T.M. Hair Design



Family Hairdressing at reasonable prices.

For all your hairdressing needs,
Our professional hairdressers are here to help.

Bookings are essential.

Just ask for whoever you'd like, when you book.
Our opening hours for January will be reduced so please call to check we are open to avoid disappointment.

We are looking to employ another hairdresser. For expressions of interest or for more information, please contact us.

At Secrets... We continue to supply top quality, well priced items from gifts to linen, clothes to sandals, hand bags to accessories & so much more. Our aim is to supply a selection of goods with a variety of price points so that there is something for everyone. If there is something your heart desires & we don't have it, please ask & if we can source your item we would be happy to order in for you.

We look forward to continuing our good service & supplying your needs in 2014.

Thank you for your continued support which enables us to support our community groups which in turn benefits **our own town!!!**

Call in to 100 Vincent St,
or phone 9646 1122.



TEEDE'S AUTO ELECTRICS

Auto electrical & Air-conditioning Repairs
(AU09431)

Guy Teede

Unit 5,
Lot 466 Brookton Highway,
Brookton WA 6306

Mobile: 0428 721 986
Phone: (08) 9642 2333
Fax: (08) 9642 2344





THE BLUE LINE
Beverley Police Station
57 Hunt Road, Beverley WA 6304

Hello Everyone,

Ian suggested that we should have gone around town carol singing over the Christmas period but I told him for our own safety and the torture that would have been brought to the people of Beverley I really couldn't live with myself if I'd had allowed that to happen. Although if you're a sadist we can always arrange something.....

Anyway, police work. We've been busy little beavers of late. Due in no small part to the excellent assistance from a number of members of the Beverley public we have been successful in apprehending a number of people for a domestic burglary which took place in town. The people responsible have been dealt with judicially and hopefully will be deterred from any future reoffending. Also, again due to people coming forward to provide formal statements relating to crimes, we have charged a number of people with a series of assaults and other more serious criminal matters. There is no doubt that were it not for people contacting us and being willing to provide statements then all of the offences we have dealt with over the last few weeks would have gone unsolved. Like I said a couple of Blarneys ago, it is good to talk and the message seems to be getting home. Let's keep up the good work between us!

OK, let me tell you what's coming up.....Christmas and New Year are here now and as such the temptation to get behind the wheel after having one too many may be a risk some feel is worth taking. As you should know by now I have never and will never belittle or talkdown to anyone as I'm no better than anyone else but if you are considering getting behind the wheel after drinking then we don't care who you are, we will throw the book at you if we catch you. We have both been to accidents where alcohol and/or drugs have been a causal factor. We've dealt with serious casualties and fatalities and it isn't nice for anyone concerned. Our job doesn't finish at the crash site. We then have to personally attend to the victims' families. In 25 years of being a Police Officer I still hate doing that knock on the door. I make no apology for the above, likewise I make no apology for posting the below link. It's a link to Victoria Police's 20 year anniversary video against drink/drug impaired driving. It is powerful and it is utterly compelling viewing. I'm meant to be a rough, tough copper but even I had a lump in my throat towards the end. If you know someone who may be tempted to drive after having drunk/smoked or taken something they shouldn't have then please get them to watch this video. It could just save someone's life:-

<http://www.youtube.com/watch?v=Z2mf8DtWWd8>

On another related note, we are lucky in Beverley that we have access to Brian and his courtesy car. He's only too willing to give people lifts, any monies donated by passengers go to local charities. It would be a shame if we lost this valuable local resource because of misguided and unruly behaviour from a very small handful of local patrons. He's another one who may save yours or someone else's life.

OK, on a lighter note I realise that I set myself up for a bit of a fall in the last issue of The Blarney. If you cast your minds back I came out with this classic in relation to The Ashes:-

"Please try and give England (or as they are also known, South Africa A) a game this time".

Well, by the time you read this I will have been to The WACA for 3 days where I fully expect England

beverley.police.station@police.wa.gov.au

Ph: 9646 3333



THE BLUE LINE
Beverley Police Station
 57 Hunt Road, Beverley WA 6304

won the toss and chose to capitulate. I really don't know what's worse, England losing The Urn or having to pay Daryle Burton \$10 in what was the most misguided bet ever. Having a mother from Yorkshire has taught me to keep a tight rein on my money so having to shell out a tenner is heartbreaking for me!

Whilst we're talking about things you regret, Ian has just come out with a comment which I suspect will also come back to haunt him in the future. He's just admitted to belting out a few AC/DC numbers on the karaoke recently. Feel free to ask for a rendition, I'm sure he'll oblige.....

The last few months have been exceptionally enjoyable for me in my short time here in Beverley and I hope to have many many more great times in the New Year. From both of us, thanks for all your help and assistance and hopefully we can continue to improve the way we work together to achieve what has to be our common goals, that is to continue to make sure Beverley remains a safe, happy and above all beautiful place to live. I for one am very optimistic (which is more than I can say about the cricket!).

Take care, we hope you had a great festive season and have a happy and prosperous New Year!

All the very best, The 2 Ians.

PS With the introduction of the new cat laws some felines have got ideas above their stations



beverley.police.station@police.wa.gov.au Ph: 9646 3333

 **brooktonhounds**
 A COUNTRY RETREAT FOR YOUR BEST FRIEND

Brookton Hounds Pet Boarding:

- 🐾 Wide open spaces 🐾 Huge enclosures
- 🐾 Family run business 🐾 Fresh country air

Contact Murray and Liz on:

t (08) 9642 1875 m 0409 103 166

www.brooktonhounds.com.au



Marcell's Cleaning

- * Domestic or Commercial * Move In / Move Out
- * End of Lease - Bond Recovery * Spring Cleaning
- * Weekly * Fortnightly * Offices * One-Off Cleans
- * Prompt and Professional Service
- * Gift Vouchers Available

Maree Thornton

Phone: 0429 646 155 / 08 9646 1558

Beverley & Surrounding Areas



Anglican Parish Beverley/Brookton

Times for services for:

JANUARY 2014



DAY	DATE	CHURCH LOCATION	TIME		SERVICE
			am	pm	
Sunday	5th Jan	St. Mark's Brookton	8:30am		Morning Prayer
Sunday	5th Jan	St. Mary's Beverley	10:30am		Prayer, Praise, & Proclamation
Sunday	12th Jan	St. Mary's Beverley	8:30am		Prayer, Praise, & Proclamation
Sunday	12th Jan	St. Mark's Brookton	8:30am		Morning Prayer
Sunday	19th Jan	St. Mark's Brookton	8:30am		Holy Communion
Sunday	19th Jan	St. Mary's Beverley	10:30am		Holy Communion
Sunday	26th Jan	St. Mary's Beverley	8:30am		Prayer, Praise, & Proclamation
Sunday	26th Jan	St. Mark's Brookton	8:30am		Morning Prayer
Sunday	2nd Feb	St. Mark's Brookton	8:30am		Holy Communion
Sunday	2nd Feb	St. Mary's Beverley	10:30am		Holy Communion



CATHOLIC CHURCH

Service in Beverley
8:00 am every Sunday at
Beverley Sacred Heart Church
Lukin Street, Beverley

THE RELIGIOUS SOCIETY OF FRIENDS (QUAKERS)

Beverley Friends Meeting
Old Catholic School Rooms
Dempster Street

Sunday 10:30am -
Meeting for Worship

For more information & enquiries
phone 9646 0575.

The telephone number for the Parish is: **9646 1112**

Parish correspondence to: P.O. Box 292, Beverley

All mail for St. Mary's Society please address to:
P.O. Box 292, Beverley.



BEVERLEY HOME CHURCH

Beverley Home Church
Meets on the 1st and 3rd
Saturday of each month.

We welcome all to share in
Christ Centred Fellowship
with Terry and Glenda.

At 4.00 pm closing with a
fellowship meal

At 16 Barnsley Street,
Beverley
Enquiries – call 9646 0546



The Church of United Spiritualism Of Australia

Please contact
Rev Irene
on 9646 0470
for details of venue
as this may vary.

Want to know more about the Bible?

Visit www.biblewa.com
for a free Bible course

If you would like a copy
of the Bible course sent to you
or more information
please email
michael.fergusson@biblewa.com



**BEVERLEY HOSPITAL AUXILIARY
OP SHOP**

Donated, clean clothing is very much appreciated. No electrical appliances, underwear or bathers accepted. Donated items may be left at Avon Trading please.

The Op Shop is open every Friday between 2:00pm and 4:00pm.

**OP SHOP ROSTER
JANUARY 2014**

Jan 24 Pam Aynsley, Roma Ladgies, Francis Neale

Jan 31 Pat Parker, Judy Moulton, Yvonne Hobbs

FEBRUARY 2014

Feb 07 Val Moad, Sera Minchin, Erica Murray

Feb 14 Jane Murray, Val Hagan, Sue Eramiha

Feb 21 Maxine Watts, Anna Mally, Gracie Courtney

Feb 28 Dorothy Barrett-Lennard, Dawn Edwards, Jeannette Johnson

Val Moad - Hon. Secretary

BEVERLEY DIABETES SUPPORT GROUP

Meets at the O.T. Room, Beverley Hospital

WHEN: 2.00pm til 4.00pm

The support group will meet every second Tuesday of the month.

Contact Sylvia Seddon on 9646 1072

Type one and two diabetics of all ages are encouraged to attend as well as other members of the public interested or suffering from diabetes. Please park on the road or behind the St John Ambulance Centre.

BEVERLEY CHILD HEALTH CLINIC

Clinic is open Fridays for appointments, home visits and/or immunisations 9am to 4pm

For appointments or enquiries please phone the hospital on 9646 3200 or 0427 901 321.



LISA WAY — Child Health Nurse



The Words of the Preacher

“My sheep hear my voice “ John 10:27

“Ho every one that thirsteth come ye to the waters. Isaiah 55:1

Jesus said:

“If any man thirst, let him come unto me and drink.” John 7:37

“Come unto me all ye that labour and are heavy laden, and I will give you rest. . . .ye shall find rest unto your souls.” Matthew 11:28 – 29

“Look unto Me, and be ye saved, all the ends of the earth : for I am God, and there is none else.” Isaiah 45 : 22



(The Words of the Preacher – PO Box 181, Beverley.)

**MEALS ON WHEELS
ROSTER FOR
January 2014**

Dec 30 D & E White

Dec 31 S & M Morton

Jan 01 Public Holiday

Jan 02 A Elston / J Van Tiel

Jan 03 K & P Smith

Jan 06 P Williamson / G Redding

Jan 07 R McCallum / W Gilbert

Jan 08 D Strange / E Boyle

Jan 09 M Alford / G Courtney

Jan 10 J Johnson / M Smith

Jan 13 K Morgan (ND) / K Badger

Jan 14 J Van Tiel / B Sims

Jan 15 S & M Morton

Jan 16 J Johnson / M Smith

Jan 17 D & E White

Jan 20 A Elston / B Foster

Jan 21 R McCallum / W Gilbert

Jan 22 M Alford / G Courtney

Jan 23 B Wauchope / C Tee

Jan 24 K & P Smith

Jan 27 Public Holiday

Jan 28 D Ormerod / B Sims

Jan 29 J Van Tiel / K Badger

Jan 30 S & M Morton

Jan 31 J Johnson / M Smith



Lindsey Doyle

Ph: 0422 300 338

PO Box 450 BEVERLEY fax: 9647 2010 email: dtworx@westnet.com.au



The Beverley Football Club hopes the year ahead is a happy and prosperous one for you all, and that everyone is enjoying a well deserved relaxing break over the Summer holidays.

A late finish to harvest has caused a little delay in us appointing and announcing a League Coach for the 2014 Season, so full details regarding this will be published in the February Blarney. As always, pre-season training will commence in the first week of February, and we encourage all new and existing players to hit the track early to be better prepared ahead of the season proper.

The Beverley Football Club invites applications for the position of **Reserves Coach** for the 2014 season. Please submit your written application by e-mail to beverleyfc@bigpond.com or by post to:

The President
Beverley Football Club
PO Box 10
BEVERLEY WA 6304

Applications close 5:00pm, Friday 14 March 2014.

The Beverley Football Club would like to wish Mark, Fi, Hannah, Harry & Matthew Bowden all the very best for their new life in Busselton. They will be greatly missed by our Club and community and will be a welcome addition to the Busselton community.

Congratulations to:

- 🎉 Darren & Kirsty Sprigg, on the birth of their baby boy, Ben Thomas, on Friday 22 November 2013;
- 🎉 Brett & Bethia Britza, on the birth of their baby girl, Mila Jane, on Thursday 12 December 2013;
- 🎉 Gerald Narkle, who celebrates his 40th birthday on Sunday 5 January 2014;
- 🎉 Travis Della Bosca, who celebrates his 30th birthday on Thursday 9 January 2014;
- 🎉 Daniel Fleay, who celebrates his 25th birthday on Tuesday 21 January 2014; and
- 🎉 Gerald Ugle, who celebrates his 21st birthday on Friday 31 January 2014.

A reminder to all players, members, sponsors and supporters that you can now view all the latest news and events from the Beverley Redbacks by checking out our Facebook page at: <http://www.facebook.com/beverley.footballclub?fref=ts>

To keep you informed and up to date on the all the latest news and events from the Beverley Football Club, simply register your email address with us at beverleyfc@bigpond.com and we'll add you to our mailing list.

See you at the footy!!!



**For all your air conditioning needs
contact:-**

Robert & Nathan Chamberlain

Avon Auto Air

Phone: 08 9647 2070

Mobile: 0428 472070

We are now accredited and
registered to install and commission **Split**
System Air conditioners.



BILL CHAMBERS

**Chartered Accountant
&
Registered Tax Agent**

Tax return preparation

Financial and accounting
advisory services

Office hours:
Wednesday
9.15am - 5.00pm

129 Vincent Street, Beverley
9646 1566 (Monday - Friday)

Australia Day Poem



By Mick Collins

I love this land Australia in, oh, so many ways
The pristine beaches, clear blue sky and endless sunny days
But most of all I love the people that she calls her own
The lucky ones so fortunate to call Australia home
I love the way we're all embraced no matter where we're from
Whether we're a Kiwi, Scot, South African or Pom
I love our laid back attitude, where no ones too uptight
Our optimist outlook of "no worries she'll be right"
I love the way we'd rather say G'day than say hello
The way we give a mate a nickname just by adding 'o'
The way we love to have a crack and punch above our weight
And stick tight to the golden rule of always help a mate
I love our sense of humour, the dryness of our wit
The brave young men who went to war just to do their bit
The way we know the Don's Average, the way we love Merv Hughes
The way we'll back an outsider and not care if we lose
The way we worship Boonie when he hasn't played for years
The way we have our friends around for barbies and for beers
The way when things are going bad we say "it could be worse"
The way that no one knows our national anthem's second verse
I love how we do deeds expecting nothing in return
I love how much we care about those ashes in that urn
I love the passion of our fans, I love that we love sport
The way our team can make us feel ecstatic or distraught
I love our language; love the phrase a technicolour yawn
I love that we can all lay claim to Cathy, Hoges and Dawn
I love how we have different ways to spread our vegemite
I love the way that none of us gives up without a fight
And that to me is why this place Australia is so great
And why we have so many things that we can celebrate
She may have natural beauty that extends from coast to coast
But the people are the things about this place I love the most



Natway Furniture & Constructions

ABN: 62 824 726 465

Wayne & Natalie Ashworth

Qualified
Carpenter & Joiner
Tradesman

- General Building Work
- Furniture Construction & Restoration

27 Brooking Street,
Beverley

Phone:
08 9646 0159

Mobile: 0417 973 415
(Wayne)

Mobile: 0429 491 039
(Natalie)



FEBRUARY 2014
BLARNEY EDITION

DON'T FORGET

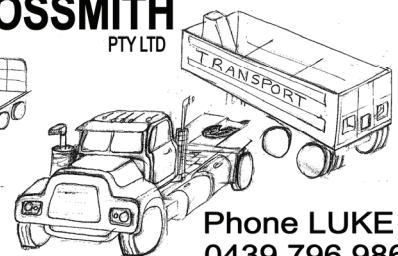
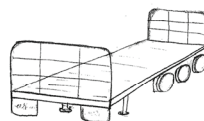
BLARNEY DEADLINE

for the FEBRUARY edition is
Tuesday 21 January at 4pm



M & L GROSSMITH

PTY LTD



* General Freight

* Hay

* Wool

* Sand Gravel

* Bulk Grains & Fertiliser

Phone LUKE
0439 796 986
9646 1983
PO Box 342
Beverley WA

BEVERLEY LAWN TENNIS CLUB

Like us on Facebook

WFI Ladies Open Day

The BLTC hosted a very successful Ladies Open Day on the 27th November. We had 52 competitors from around the zone who played in 4 divisions. The day was sponsored by CBH Group, Jane Murray and Healthways. The BLTC is very grateful to all of our sponsors for their generous support of this event.

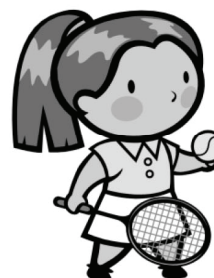
The results of the day were as follows:

A Grade Winners: Cathy North & Vanessa Leeson (Northam)
Runners Up: Charmaine Willing & Narelle Bailey (Beverley)

A Reserve Winners: Carol Dall and Kelsie Squiers (Quairading)
Runner-Up: Bev Young and Kathie Weatherly (Northam)

B Grade Winners: Val Hayes & Lynn Whyte (Quairading)
Runners Up: Jane Johnston & Mary-Jane Rogers (Quairading)

C Grade Winners: Ali Lewis & Bob Hall (Beverley)
Runners Up: Deidre Gowland & Carly Veitch (Beverley)



I would like to thank all who participated in the organisation and preparation for this day and to those who competed. A very special thank you to our greenkeeper, Rob DeGruchy for the fabulous preparation of our courts. It was an excellent day of tennis enjoyed by all.

Aliesha Murray

FIXTURES FOR JANUARY

SUN All January **Sunday Twilight Tennis 4.30pm Start** **Call: Charmaine 0427 444 407 Wendy 0402 853 977**
Bill 0428 472 054 Graeme 0414 731 338

FEBRUARY FIXTURES

Sun	2nd	Sunday Social Tennis	
Sat	8th	Pennant Tennis - Beverley vs Quairading	
Sun	9th	Sunday Social Tennis	
Sat	15th	Pennant Tennis - Beverley vs Cunderdin	
Sun	16th	CHRIS BOLADERAS MEMORIAL TROPHY - SELF HANDICAP - Draw for Partner	Names due 12th Feb BBQ Dinner. Salad to share
Sat	22nd	WFI MIXED OPEN DAY - Choose Own Partner	Names due 19th Feb See Notice Board for catering
Sun	23rd	Sunday Social Tennis	

MARCH FIXTURES

Sun	2nd	Sunday Social Tennis	LONG WEEKEND - Fish & Chip Night
Sun	9th	CHAMPIONSHIPS SINGLES & DOUBLES 10am start or TBA	Names due 5th March Rolling BYO lunch
Sun	16th	Sunday Social Tennis	
Sun	23rd	CHAMPIONSHIP MIXED DOUBLES - Choose own partner	Names due by 19th March BBQ Dinner. Salad to share
Sun	30th	Sunday Social Tennis	

APRIL

Sat	5th	SATURDAY CLOSING DAY Championships Finals and Presentations AGM @5pm	BBQ Dinner. Salad to share
Sat	12th	Saturday Social Tennis	
Fri Sat Sun Mon	18-21	81st ANNUAL BEVERLEY EASTER TENNIS TOURNAMENT	See Notice Board for Catering.

The Beverley Lawn Tennis Club would like to wish the Bowden family all the very best for their move down south.



Beverley Lawn Tennis Club Inc

PO Box 110 Beverley WA 6304

Telephone: (08) 9646 6260

ABN 80 267 387 998

Members details

Name (s)

Address

.....

Phone

Email

TAX INVOICE

Membership fees for 2013/2014 Season **Due 3rd Nov 2013**

(As set at the Annual General Meeting April 2013)

No.	Type of membership	Cost	Total
	Senior Member	\$90.00	
	Junior 15-17 Years	\$30.00	
	Sub junior under 15 years	\$20.00	
	Social Member	\$30.00	

Additional fees – for information only

Visitor Fee Senior \$10.00

Visitor Fee Junior \$5.00

Members court fee seniors - \$3.00, and juniors \$1.50

Tournament fee \$5.00

Cheques to be made out to the Beverley Lawn Tennis Club or you may do an EFT directly to the Tennis Club ANZ account, please use your surname as the reference. Please advise treasurer of your payment ak.shaw@bigpond.com or phone 0428481029. Remember if paying by EFT you MUST still return this form for purpose of member details (required for auditing).

BSB: 016-540 ACCOUNT: 110201399 (ANZ Beverley)

The Beverley Lawn Tennis Club is not registered for GST.



Like us on Facebook –

www.facebook.com/pages/Beverley-Cricket-Club-The-Redbacks/408956059204439

Results

01 December 2013 – Kellerberrin Vs Beverley at Kellerberrin

Beverley 8/146 defeated **Kellerberrin** 10/49

Beverley Batting: R. Wansbrough 42 (ret), S. Marshall 38no, S Gollan 34 (ret).

Kellerberrin Bowling: T. Stewart 3/12, M. Cole 3/20

Kellerberrin Batting: R. Griffiths 12

Beverley Bowling: D. Wansbrough 6/35, R. Wansbrough 3/11, S. Gollan (Miraculous) Run Out.

08 December 2013 – Brookton Vs Beverley at Brookton

Beverley 8/174 defeated **Brookton** 10/114

Beverley Batting: S Gollan 79, R. Wansbrough 58, J Adams 0.

Brookton Bowling: T. Evans 3/22, D. Rushton 2/4

Brookton Batting: T. Evans 27, M. Sweeney 17no.

Beverley Bowling: R. Wansbrough 3/31, D. Wansbrough 2/13, B Mclean 2/12.

From the President's Barstool

My rev up in the last Blarney obviously worked wonders! The boys have managed to string together a few wins and are looking the goods. The demolition of Keller was particularly sweet, but not as sweet as the complimentary keg young 'Buddha' Adams will be putting on after his third duck in a row against Brookton. Thanks Buddha!

Congratulations to Daniel Gollan and Beau Mclean who represented the Wheatbelt in the recent Regional 16s tournament in Bunbury. Don't get too good, we enjoy having you back during your holidays!

A big thank you to **Amanda and Greg** from the **Freemasons Tavern, Inkosi Design** and **Mark Britza** for their generous sponsorship!

Club Shirts, Shorts and Caps will be available shortly. If you are a player and haven't put your order in yet or a passionate supporter that is after some top quality merch, please contact Steve Gollan or message the Facebook page.

We will be spending a few weeks in the spell paddock through the festive season, so I would like to wish all a very Merry Christmas and a prosperous and happy New Year!

Until next time – Stay Classy, **Pres.**

Coming Events In Beverley

Thursday	09 January	WA State Gliding Championships
Saturday	11 January	Movie Night on the lawn—Platform Theatre
Monday	13 January	AGM of Electors
Tuesday	14 January	iPad's explained 10am at CRC
Friday	17 January	SMART phone training 2pm at CRC
Sunday	26 January	Australia Day Pool Party
Saturday	01 February	RSL Markets
Tuesday	11 February	iPad's explained 10am / SMART phone training 2pm
Saturday	15 February	Queen & Freddie Mercury Tribute Concert
Saturday	15 February	Heavenly Hectares Workshop
Saturday	15 February	Mustang Owners Club WA 'Show & Shine'
Saturday	22 February	BHPC Joining Day
Sunday	02 March	Teddy Bears Picnic at Beverley Swimming Pool
Friday	07 March	World Day of Prayer
Saturday	08 March	Opera on the Platform
Sunday	09 March	Tennis Championship - Singles & Doubles
Saturday	15 March	WA Tractor Pull - Round 3
Sunday	16 March	BHPC Rally
Sunday	23 March	Tennis Championship - Mixed Doubles
Saturday	29 March	Bowling Club celebrates 100 years
Saturday	05 April	Drama Production at Platform Theatre
Thursday 17 - 21	April	46th Annual Easter Art Purchase Exhibition
Friday 18 - 21	April	81st Beverley Easter Tennis Tournament
Saturday	19 April	Platform Easter Markets
Saturday	03 May	WA Tractor Pull - Round 4
Sunday	01 June	WA Tractor Pull - Round 5
Sunday	01 June	Calendar Girls at Town Hall

The flag was flown at half-mast on the Beverley Town Hall as a mark of respect to:-

* **Valerie Joan (Val) Edwards**

DISCLAIMER

The information in this publication is of a general nature as a service to the ratepayer. The articles included herein are not intended to provide a complete discussion of each subject. While the information is believed to be correct, no responsibility is accepted for its accuracy. No liability is accepted for any statements of opinion or any error or omission.

BEVERLEY BLARNEY

1100 copies each month

ADVERTISING RATES

Size A: (~122 x 180mm)	\$80.00 GST inc
Size B: (~122 x 89mm)	\$40.00 GST inc
Size C: (~60 x 89mm)	\$24.00 GST inc
Size D: (5 lines)	\$ 8.00 GST inc
Size E: (3 lines)	\$ 5.00 GST inc
Size F: (122 x 135mm)	\$60.00 GST inc

Club notes etc. are free of charge

**The deadline for the next
Beverley Blarney is 4pm
Tuesday 21 January 2014**

Shire of Beverley
PO Box 20, Beverley, 6304

Tel: 9646 1200 or Fax: 9646 1409

Email: blarney@beverley.wa.gov.au

EDITION	DEADLINE DATE	
FEBRUARY EDITION 2014	TUESDAY 21 JANUARY 2014 <i>(earlier due to Australia Day)</i>	27 January - 'Australia Day' observed
MARCH EDITION 2014	FRIDAY 21 FEBRUARY 2014	03 March - Labour Day
APRIL EDITION 2014	MONDAY 24 MARCH 2014	
MAY EDITION 2014	TUESDAY 22 APRIL 2014	18 April - Good Friday, 21 April - Easter Monday, 25 April - Anzac Day
JUNE EDITION 2014	FRIDAY 23 MAY 2014	
JULY EDITION 2014	MONDAY 23 JUNE 2014	02 June - West Australian Day
AUGUST EDITION 2014	WEDNESDAY 23 JULY 2014	
SEPTEMBER EDITION 2014	FRIDAY 22 AUGUST 2014	
OCTOBER EDITION 2014	MONDAY 22 SEPTEMBER 2014	29 September - Queen's Birthday
NOVEMBER EDITION 2014	THURSDAY 23 OCTOBER 2014	
DECEMBER EDITION 2014	MONDAY 24 NOVEMBER 2014	
JANUARY EDITION 2015	THURSDAY 18 DECEMBER 2014 <i>(earlier due to Christmas break & offices closed)</i>	25 December - Christmas Day 26 December - Boxing Day



Look to the skies on 9th January for
The State Gliding Championships



January 2014

Monday	Tuesday	Wednesday	Thursday	Friday	Saturday	Sunday
		1 NEW YEARS DAY Public Holiday	2 Line Dancing	3	4 Samba @ CWA	5 Twilight Tennis Twilight Mixed Bowls
6 Shire Office Re-opens Bridge @ CWA Boxing/Fitness	7 Men's Shed HACC Stay Active	8 HACC Twilight Mixed Bowls	9 Line Dancing State Gliding Championship	10	11 Samba @ CWA Outdoor Movie Night @ The Platform Singles Party @ Freemason's	12 Twilight Tennis Twilight Mixed Bowls
13 Bridge @ CWA Boxing/Fitness AGM of Electors 8pm - Amenities	14 Men's Shed HACC Stay Active	15 HACC Twilight Mixed Bowls	16 Line Dancing	17	18 Samba @ CWA	19 Twilight Tennis Twilight Mixed Bowls
20 Bridge @ CWA Boxing/Fitness	21 Men's Shed HACC Stay Active BLARNEY DEADLINE	22 HACC Twilight Mixed Bowls	23 Line Dancing	24 Op Shop	25 Samba @ CWA	26 AUSTRALIA DAY Australia Day Pool Party
27 Public Holiday	28 Men's Shed HACC Stay Active	29 HACC	30 Line Dancing	31 Op Shop Shire of Beverley Community Grants Closing Day		