



BEVERLEY BLARNEY

U
P
P
O
C
C
I
N
G
E
V
E
N
I
N
G
S



Date: Monday 5 November 2012
Time: 9.00am - 3.00pm
Venue: Beverley Town Hall
Tickets cost \$40 per person
 Fully Catered Event
 Tickets on sale Tuesday 2nd October 2012 from
 Beverley Community Resource Centre
 Ph: 9646 1600 or E: beverley@crc.net.au
 Event not suitable for children



Beverley Region Advancements

Platform Theatre
Movie Night
 Saturday 13 October 2012

6pm Gates Open
 Bar Available
 NO BYO Drinks
 Indian Curries on sale pre-show
 OR BYO Picnic Coffee Van

Tickets available at the gate
 Adults - \$12
 Friends of the Station - \$10
 Under 12's - \$8

FEATURE MOVIE COMMENCES AT 7.00pm
 FOR LATE STAYERS A 'SURPRISE' SCREENING AT 9.15pm

Rug up if cold and, in case of inclement weather the event will be transferred to the Town Hall
 For more information contact Jenny 9646 1500

DIAMOND
 THE NEIL DIAMOND TRIBUTE
www.neildiamondtribute.com.au

ONLINE BOOKINGS
www.trybooking.com/BUKX
 OR Tickets from Beverley Newsagency

Special Guest
WAYNE PRIDE

the DIAMOND BAND
 'A BEAUTIFUL NOISE'

TICKETS \$40.00

SATURDAY 24th November

BEVERLEY PLATFORM THEATRE
 Cnr Railway Line & Vincent St - BEVERLEY

Gates open 6.00pm
 Entertainment from 7.30pm
 Outdoor Event

CONTACT
 Jenny Broun 0419040063
beverleystationarts@gmail.com

Licensed Bar, Coffee Pizzas & Snacks

Beverley Harvest Festival
 Go for 2&5

SUNDAY 25TH NOV, 10AM - 4PM
 AVONDALE DISCOVERY FARM

HARVEST DEMONSTRATIONS
 LIVE MUSIC ANIMAL NURSERY
 BLACKSMITH DEMONSTRATIONS
 WORKING SHEEP DOGS
 CLYDESDALES
 FOOD STALLS LOG CHOPPERS
 FARM DRIVE TOURS
 DEVONSHIRE TEAS
 MARKET STALLS

And More!

ENTRY: \$10 ADULTS • \$5 CONCESSION • UNDER 12'S FREE
 SHADED PICNIC AREA WITH FREE BBQ'S, BUY OR BRING YOUR LUNCH
 ** NO PETS PLEASE **

AVONDALE DISCOVERY FARM, 550 WATERHATCH RD, BEVERLEY
 6KM WEST OF BEVERLEY & APPROX. 90 MINS FROM PERTH
 PH: 08 9646 1004 WWW.BEVERLEY-WA.COM/AVONDALE



Shire President's Report October 2012

Amalgamation

As mentioned in the last Blarney, the Shire of Beverley has withdrawn from the South East Avon Regional Transition Group following a clear indication from our community that it does not support an amalgamation. This will allow the remaining SEARTG members to continue with their planning toward amalgamation. A press release in relation to this action is included in this edition of the Blarney (see page 5). Council will be seeking to discuss future arrangements for regional co-operation and interaction with all of our neighbours.

Heritage Council Visit

In early September the Shire of Beverley hosted a regional visit by the Heritage Council of WA and State Heritage Office, providing representatives with an overview of important heritage activities and facilities in our Shire. A community tour included the Railway Station Cultural Precinct, Court House, Avondale, Dead Finish Museum and Town Hall. An invitation was extended to neighbouring Local Governments to attend an information session and briefing at which representatives of the Beverley Historical Society and Avondale Farm Project Association were also in attendance. In correspondence since received, Heritage Council Deputy Chairperson Anne Arnold notes "our (Heritage) Council members were greatly impressed by the enthusiasm shown by the groups and individuals in Beverley, and the pride in their local heritage".

Telecommunication in the Wheatbelt

The Wheatbelt Development Commission is interested in the location of telecommunication black spots in the region, and Council would like to see these black spot problems resolved. Please advise the shire office if you know of an area where there is incomplete mobile coverage so this information can be collated onto a district map.

Avondale

The Avondale Farm Project Association

(AFPA) and its volunteers, in conjunction with project officer Dina Barrett-Lennard and farm manager Peter Jenkin, continue to make Avondale open to the public where possible and assist in profiling the opportunities Avondale has to offer to the region. The next important event being held is the Beverley Harvest Festival in November.

Avondale Discovery Farm has now been in a "holding pattern" for almost three years since the National Trust agreed to become custodian of the property to save it from being sold off by the Department of Agriculture. A substantial amount of planning has occurred during this time as have numerous submissions to secure funding. Whilst various projects and funding sources have been achieved, major funding for refurbishment of this important regional and state asset to move the property towards sustainability has so far been elusive. The National Trust, Shire and AFPA are still working to secure partnerships and funding and although this has been a tedious path, it's not one that has been given up on yet!

Seniors Luncheon

Councillors are looking forward to sharing an afternoon with Beverley Seniors (65 & over) at the Retirees Luncheon on Tuesday 30th October 2012. This event is free, however places are limited. Please contact the Shire to reserve your seat (form on page 22).

Christmas Light Competition

Council is re-activating the Community and Businesses Christmas light competition. Councillors and staff look

forward to your interest and participation.

Garden Club Busy at the Caravan Park

Thankyou to the Beverley Garden Club for their ideas and the plantings undertaken to refurbish the garden bed next to the Campers Kitchen. This was preceded by some creative rockery work by the Shire's outside staff. The ongoing improvements being made to the Caravan Park continue to receive favourable comments from visitors to our town. We look forward to the Garden Club's 30th anniversary celebrations later this year.

Football/Netball/Hockey Grandfinals

What an achievement for Beverley to have Redbacks' Football, Netball and Hockey teams all make it into their respective grand finals, and then all play in "nail biting" finishes to the season. I'm sure there are still many ringing ears following the massively supported indoor netball game! Whilst the netballers and footballers were successful in bringing home the flag, everyone involved with these teams are to be congratulated on such a united effort.

Bowling Club

On a final note I would like to congratulate the committee and members of the Beverley Bowling Club for their perseverance in rectifying the problems faced with remediation of the artificial turf, and recognise the enormous amount of work recently undertaken to have the greens once again ready for action.

Dee Ridgway
Shire President

Natway Furniture & Constructions

ABN: 62 824 726 465

Wayne & Natalie Ashworth

Qualified Carpenter & Joiner Tradesman

- General Building Work
- Furniture Construction & Restoration

27 Brooking Street, Beverley

Phone:

08 9646 0159

Mobile: 0417 973 415 (Wayne)

Mobile: 0429 491 039 (Natalie)



Beverley Football Club are the 2012 AFA League and Netball Premiers!!





AMMOND FENCING

Jamie & Jen Hammond

PHONE: 0427 866 488

- **ALL TYPES OF FENCING**
- **KANGA LOADER & TRENCHING**
- **SLASHING**
- **FIREBREAKS**
- **PIPE LAYING**

FOR SALE

HYUNDAI GETZ - Silver
 2011 5 door, Manual 1.6
 As New 13,000kms
 \$13,800 ono.
 Phone: 0427 730 963

FOR SALE

V MOTO SCOOTER
 125cc, Low kms
 Licensed 6 months
 \$800 - Open to Offers
 Phone: 0427 730 963

Beverley Earthmoving Contractors

40 years experience in all aspects of Earthmoving.

One stop shop for all your Septic Systems.

Supply & Install

Plumbing Licence PL 5829 Gas Fitting Licence GF 7422

ALL ASPECTS OF EARTHMOVING

House Pads Site Cuts

Block Clearing Laser Levelling

Service Trenches

To Shire and engineer specifications.

SAND SUPPLIES

Metal Gravel

BULK HAULAGE

Truck and Dog Trailer Backhoe 315 SE John Deere

Side Shift Extender Hoe

Bob Cat Loader

Forklift Post Hole Borer

General Freight ingage and over width loads
credited.

Phone:

Ron 9646 0318

0429 088 689 or 0488 087 316

BEVERLEY TREE AND GARDEN SOCIETY

30TH ANNIVERSARY



Invitation extended to the public,
all past and current garden
club members.

To attend our

30th Anniversary Celebrations.

DEAD FINISH MUSEUM

Saturday 24th November
10am—2pm

Stalls, Entertainment and
Light refreshments.

Contacts:

Betty Cable 9643 1043

Dalene Davies 9643 1047

Vivienne Doncon 9646 1037

Beverley Weight Watchers

Street Stall & Raffle
Saturday 01 December

**Cakes and baked goods, plants,
books and RAFFLES.**

Donations Welcome



Media Release

Shire sets course for future



The Shire of Beverley has voted unanimously against amalgamating with neighbouring Councils of York, Quairading, Cunderdin and Tammin.

Shire President Councillor Dee Ridgway said the vote was taken by the Council after an exhaustive and detailed review lasting over two years, which included a visit to South Australia to meet with people on the ground who had first hand “before and after” experience.

Councillor Ridgway said Councillors had engaged fully in the review process, were well informed on all of the issues and had gone to great lengths to communicate with residents without trying to influence public opinion. She said a number of initiatives had been undertaken by the Shire to keep community members informed and involved, seeking feedback on regional structural reform.

The Shire provided a “Past, Current and Future” information letter and conducted a questionnaire. Councillors and staff attended an information booth at the Agricultural Show to discuss the issue and a community information meeting attracted a large crowd, filling the Town Hall.

All activities generated a great deal of interest, feedback and discussion from the community. Through this community engagement there has been a strong and consistent indication that the majority do not support amalgamation.

After full consideration and consultation, Council has resolved not to proceed with amalgamation. By withdrawing now, it would allow the remaining Councils to continue with their deliberations.

Cr Ridgway said the Council supports and agrees with the community in their concerns regarding:-

- Loss of independence and self determination;
- Reduced direct representation;
- Creation of Community Advisory Committees being another layer of local government" which would have little real influence;
- The establishment of a larger centralised bureaucracy doesn't necessarily improve the service level and delivery;
- Potential loss of Town Service Centres as a new Local Government seeks to introduce reforms and achieve budgeting targets;

Cr Ridgway said the Council is of the view that ultimately there can be no assurance a new Local Government will deliver the expected outcomes in the Regional Plan for the Beverley area.

Another concern in relation to this amalgamation proposal is the inability to encapsulate and cultivate the high level of social capital within Beverley which the Shire of Beverley is currently able to foster and support.

“We also contend that through the existing Voluntary Regional arrangements, there remains much scope to co-operate and combine resources to achieve improved results for our community, whilst retaining our identity and local decision making”.

Councillor Ridgway said the Beverley Council was appreciative of the opportunity to be involved with the Regional Transition Group. She wished the remaining Councils well with their future planning and looks forward to continuing our close association and co-operation.

End of release
25 September 2012

Beverley Junior Sporting Council Winter Sport Wind-up

On Saturday 25th August Auskick, Junior Football, Netta and Junior Netball had their wind up for the year. Lots of fun was had by all the kids and some of the parents showed off their forgotten but not lost footy skills! Both sports enjoyed a great season which included the Beverley Shield for football and the Anderson-Simpson Shield for netball both held in Beverley.

Thankyou to all the kids for participating and the parents for giving up their Saturday and Sundays to get their kids to winter sport.

Trophies presented for the season were for Junior Football

Wauchope Medal

Fairest & Best-Luke Gollan

Most Consistent – Thomas McLean

And for Junior Netball

Glenys Petchell Trophy

Fairest & Best – Gabriella Ochtman

Most Improved – Abbey Cooke

Well done to all the players and coaches for a great season.

Look forward to seeing you next year!

★ ★ ★ Future Sporting Stars of Beverley ★ ★ ★



Dawson's

Concrete & Reinforcing

“Your Local Beverley Concreter”

- Concrete Formwork & Steel Fixing
- Driveways, Shed floors, Maintenance pits, Silo pads, Super sheds, House pads
- Fully mobile service
- Over 30 Years Experience
- 7 Days A Week
- Professional, Reliable Service

Phone for a Free Quote

SANDY DAWSON
Mobile: 0417 375 221
Email: pameladawson@bigpond.com

WORK WANTED

Young man of 17 looking for work in Beverley. Willing to do manual labour, learn new skills and Be active in the community. Would like an opportunity to join the work force. If you are able to help we at Essential Personnel Northam are able to offer support. For further information please do not hesitate to contact Dianne on 0477 221 661.

FARM CARETAKER AVAILABLE

If you're going away on holidays this summer and need a caretaker, give me (Shane) a call on 0401 367 334 and ask for a quote. Born and raised in Beverley, I've come home to live and work after a career in education, then horticulture. I'm reliable and resourceful - and you'll find that my rates are very reasonable too.

St. Mary' s Anglican Soci- ety



ROSE SHOW

Friday 19 October 2012
Beverley Town Hall

Thank You

On behalf of the Clatworthy and Lane families, I would like to extend our Thanks firstly to Michele and Dr. Emmanuel for their assistance in placing our mum into the Beverley Hospital.

The nursing staff that attended to Mum were fabulous and we can not Thank You enough, for the care and consideration you all showed her.

She was very touched with the care you made to celebrate her 97th Birthday.

*Thank you all
Glenys Lane*

St. Mary' s Anglican Soci- ety

Meeting will be held on
TUESDAY 9th October
at



Thankyou

Bill Wansbrough and his family would like to say a very sincere thank you to the local St Johns Ambulance, especially Jenny Rayner and Scott Morrell, for their prompt and expert attention they offered to Bill when he suffered a stroke at home on the 9th of August. Your rapid response has certainly made his recovery a whole lot better than what it may have been.

Also to Dr Emmanuel and the staff at the local hospital along with the Doctors and staff at both Royal Perth and Bentley, we say thankyou for your excellent care.

To all Bill's wonderful friends who rang, sent cards and visited him in hospital, we would like to thank you for your support and encouragement and he is looking forward to catching up with you all in the near future.

Thankyou all again.

BROOKTON PLUMBING

ABN: 37 675 595 336

**FOR ALL YOUR
PLUMBING MAINTENANCE
AND GAS FITTING NEEDS**

***PLUS SEPTIC WASTE
REMOVAL**

PHONE:

**SEAN 0413 480 543 or
NATASHA 0422 013 889**

PL: 7130 GF: 006947 SWR: T235


dtworx
local carpentry service

Lindsey Doyle

Ph: 0422 300 338

PO Box 450 BEVERLEY fax: 9647 2010 email: dtworx@westnet.com.au

Beverley Pool News

Firstly, I will send out a huge congratulations to all our sporting teams in particular all our Grand finalist, the entire Redbacks brigade: Footy, Netty and Hockey. Well done to all players and officials and who can forget our all concurring cricketers earlier in the year. When my family was offered a chance to re-locate here from Perth we chose Beverley for a lot of reasons but one of them wasn't the fact that this Town over achieves in all sports. As a sports fanatic if it was mentioned how good Beverley is at teams sport then it would have been a no brainer to move here. We feel so lucky to be part of a winning culture that exists in this community.

So on with the business. After what seemed an endless winter finally a bit of light at the end of tunnel. As a Pool manager we are expected to set high standards of annual training known in the industry as requal (requalification). My governing body LIWA checks our certificate of authorisations yearly and instructs us on what we have to achieve to be qualified to operate a Pool every season. This year I had to travel back to Donnybrook (as I do every year) to re-do my Bronze medallion, Pool lifeguard and First Aid. I'm happy to report that after two hard days of being thrown around like a test Dummy I passed for 2013. Next I was informed my working with children clearance was expired so I had to re-apply for that, all good BTW. Thinking I had done all that was required to work I was sent an email with a "please explain" on it. OMG I thought, what else could they possibly want from me now? Anyway I was told that it has been four years since I last attended an industry conference and if I intend to work this season I will have to (by law) be there. Well thanks to Contact

Aquatic Services they put me up for the three days at the Freo Esplanade hotel. As a team player I decided to attend and try to enjoy the freebies and formal dinner on night two. I'm happy to report that apart from all the fun and lots of drinks it was a brilliant experience where I got to see old mates and meet new ones.

One really interesting speaker was an old friend of mine from Royal Life Lauren Nimo. After twisting her arm she offered to bring the "Watch around Water" program from Perth to Beverley. This is a real coup for us as this program only ever travels outside Perth to very remote Aboriginal communities. As this is our 50th year anniversary Lauren couldn't say no. The only other problem we have is when do we get them to come? November 18th is a day all the boxes were ticked. It's a Sunday, the pool would have been open for a couple of weeks by then and hopefully the weather and water temperatures should have risen a wee bit. So with all that in mind it has been decided to launch an inaugural Teddy Bear's picnic. The positive this brilliant event brings as opposed to the usual Pool party we host every season is it will better suit all ages and families particularly Toddlers with their Mummy's and Daddy's. The big Pool inflatables will still be on offer for the older kid's but this day is really for the young ones. We have deliberately chosen a lot of dry activities so if it is a little windy there will be lots of action outside the pools to keep the little tackers more than occupied. Walter the watch around water dog will be there to hand out a heap of freebies along with Constable Care (TBC). A junior water inflatable and bouncy castle, lots of games, prizes and fun activities to ensure this Teddy bears picnic will be a success. Parents, don't stress about catering as this has been sorted for you. There will be healthy

picnic boxes with fresh Teddy sandwiches, Tiny Teddies, Honey cupcake, Salad cup, watermelon jelly and sultana's included for only \$5.

Before I wind up I would like to remind everyone that this is a special year for the pool and to celebrate the 50th anniversary we will be hosting a massive pool party on December the 16th which will include a live band and more fun and games you can imagine. The Lions Club of Beverley will host the annual Australia day BBQ on January the 26th. February 2013 this will most probably be a Pool party with a free sausage sizzle and drink. March has not yet been decided but I'm sure by the time I put my Christmas article in we will have a special event planned out. Don't be surprised if I come knocking on your business door for a small contribution for the annual Xmas hamper raffle we hold. All money raised as per last year goes towards new pool equipment and toys for the kids. The official opening day for the 2012/13 summer pool season is November the 1st. Be there for our launch at 6:30am and cheer our early morning swimmers on as they head another year of invigorating morning laps and hopefully this season we will win a 1st division lotto. Please "Like" us on Facebook to keep up with all the Pool action throughout the entire season.

Please feel free to come and talk to me if you want your child's next birthday party at the pool with plenty of options available, including a pool inflatable.

Brad M.



Beverley Swimming Pool invites you to

TEDDY BEARS' PICNIC



\$1 entry



**12pm Sunday November 18th
@ Beverley Pool
What to bring**

- Your Teddy
- Picnic Rug
- Hat/ Sunscreen



Come and join us for fun in the sun including

Bouncy castle
Pool inflatable
Craft Station
Face Painting
Best Dressed Teddy
Prizes & free giveaways

Proudly presented by
Contract Aquatic Services, Shire of Beverley, WA Police
And Royal Lifesaving WA

\$5 picnic hampers available from the kiosk

Beverley DHS P&C

In conjunction with

Kindy and Pre-primary Subcommittee

MASSIVE JUMBLE SALE

To raise funds for a new Pre-primary playground

Saturday 3rd November

ON THE LAWN OF CRC

Children's Toys

Children's Clothing

Children's Books

Plants

Cake Stall

Donations Gratefully Received.

Please deliver to the front office at the school or contact Sarah Aynsley 9646 6246

0437 483 329

ds.aynsley@bigpond.com

SWATHING CONTRACTOR AVAILABLE

- Reliable recent model Mac Don self propelled Swather
- Set to spray under swath
- 12 metre front
- Auto steer

We are farmers from Cunderdin
Phone David 0419 041 444 or
Rick 0458 351 310

RA-AN ENTERPRISES

All Dozer and Excavator Work
Including:

Dam Sinking
Dam Cleanout and Enlarging

Excavator with Wood Shears,
Tilt Bucket and Hydraulic
Grab.

Locally Based at West Kokeby

Phone Ray 0428 936 621 or
08 9646 4136

WANTED

Sauce bottles with lids
And Jam Jars with
metal lids required.

Please Phone
0427 072 114

BEVERLEY BAKERY

**FRESH PIES, PASTIES,
SALAD ROLLS, SLICES AND
BREADS BAKED DAILY.**

Now Available – Busy Bush Bees, Local Honey.

Open Thursday to Monday from 6am
Phone Angie 0427 106 742 or Mark 0411 256 681

MARCELL'S CLEANING

For all your Domestic and
Commercial Cleaning.
Gutter Cleaning,
Rubbish Removal
Plus Light Gardening.



Phone:
Maree Thornton
9646 1558
0429 646 155

100

Centenary Celebrations

100

St. Andrews Church, McMullan's Hall and the gazetting of the Kauring Townsite.

On Sunday 21st October 2012 centenary celebrations of St Andrews Church, McMullans hall and the gazetting of the Kauring townsite will take place. The day will commence with a church service at 9.30am followed by morning tea at the hall. BYO lunch and take a trip down memory lane by walking the temporary walk trail that will be provided. If you have any photos or items to display on the above historical places, please phone Judy Binning on 9641 4047 or email judybinning@gmail.com An RSVP would be appreciated to estimate approximate numbers. Everyone is most welcome to attend.

HUGE

**Weekend Yard Sale
27-28 Oct. 8AM - til?
272 York-Williams Rd.**

Furniture, Appliances, Air Conditioners, Household Goods, Tools, Equipment, Steel Boxes, Muscovy Ducks and Duck Feeding/ Watering Equipment, Farm Sundries and HEAPS More.

**For more info, call
9648 1065**

Mews Electrical Service **Lothar Mews** Electrical Contractor

Lic. No. 000797

PO Box 429
Beverley WA 6304

Ph/ fax: 08 9646 1918
Mob: 0419 851 934



Penchar Contracting Grader Hire (WET)

John Deere 770BH (cat 140h equivalent)
14' mould board, rear rippers.

Roaded catchments, contours erect & decommissioned, roads & tracks, fence lines, house and shed cuttings, firebreaks, runways and washout fills

Contact: Fred Sing (China)
Mobile: 0429461369



TV Antennas

**UHF CB Repairs
Digital TV Upgrades
Reception Problem Solving**

Qualified communications technician.
Reasonable labour charges.
Onsite service.

Repairs and installation to some car audio, car security, mobile phone handsfree.
Reversing camera systems for automotive and machinery.
Based locally in Beverley

**Regional Antennas Plus
ALAN PRIMROSE
0408 002 965**

SMITH EARTHMOVING



**Dam Sinking and cleaning
Banks constructed and levelled
Gravel & Sand stockpiling
Conservation & Restoration works
Sand & Gravel Cartage
50 tonne Float for hire**

**Experienced operator, Quotes available
For more Information**

**Phone: 0428 458 121 Or 90 458 121
Email: smith.wa@bigpond.com**



School Opening

Don't forget Avondale Discovery Farm will be open during the school holidays from 29 September through to 15 October. All the usual attractions including agricultural machinery museum, 1890's stables complex, homestead museum, animals and picnic area, with free gas barbecues. Entry by donation. Gates open between 10am and 4pm.

Maintenance around Avondale

Avondale has received an awesome boost in resources with the assistance of the Max Employment team. Under the capable supervision of Kelvin Quartermaine, the team (Alan, Rodney, Tia, Donna, Lisa, Helena, Gavin, Tyrone, Tristran and Steven) has literally cleaned up the public accessible areas including weeding the homestead, and Museum gardens, mowing, mowing and more mowing with the final touches being carried out with the whipper-snipper. Well done guys and gals!

Jason Taylor, under the watchful eye of Harold Anderson, Richard Boladeras and Ray Walters, have started many tractors, repaired a few and have plans for other projects in the museum for the future. Thank you all for your commitment and enthusiasm. It really is appreciated.

Dinosaur Dig

During the month some unusual bones were discovered at Avondale. We were very fortunate to be able to call on the services of Beverley District High School Palaeontologists (namely Pre-primary and Year One). The crew did some digging and found several bones. We are hopeful of an identification and full report in the very near future. Thank you to all those involved.



Local crafters and producers

The events committee is busy putting together another exciting program for the annual Harvest Festival planned for Sunday 25 November. We would like to encourage local crafters and producers to participate and have confirmed a special site fee of \$25 for bona fide Beverley (postcode 6304) residents.

If your community organisation would like to undertake catering at the Harvest Festival please contact Marlene Willson 6467 7263 to discuss.

Beverley Harvest Festival

Sunday 25 November 2012 between 10am and 4pm at Avondale Discovery Farm.

Please Note: We would like to encourage local organisations to contact us regarding catering at the above event. Up to 30 September first preference will be given to locals, but you must contact us to register.

For more Avondale information contact 9646 1004 or 0427 477 734. Email enquiries to dina.blennard@ntwa.com.au



*Photo left:
Mick and Richard*



*Photo above:
John Ray and Micheal*



*Photo above:
Harold, Mick, Peter John
and Tim all into it!*

Your community Heritage Museum Workshops

We have enjoyed fantastic support from a group of *new* volunteers for the machinery collection in the museum. Mick Martin, Wayne Lightbody, John Hawke, Dave Shopland, Duayne Haeusler, Tim Yeadon, Michael Sofolous, Peter Douch, and



More Information
Avondale Farm 9646 1004
www.beverleywa.com/avondale
National Trust of Australia (WA)
9321 6088
www.ntwa.com.au



Go for 2 & 5[®]
FRUIT VEG

Beverley Harvest Festival

SUNDAY 25TH NOV, 10AM - 4PM
AVONDALE DISCOVERY FARM



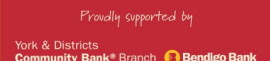
HARVEST DEMONSTRATIONS
LIVE MUSIC ANIMAL NURSERY
BLACKSMITH DEMONSTRATIONS
WORKING SHEEP DOGS
CLYDESDALES
FOOD STALLS LOG CHOPPERS
FARM DRIVE TOURS
DEVONSHIRE TEAS
MARKET STALLS...



And More!

ENTRY: \$10 ADULTS • \$5 CONCESSION • UNDER 12'S FREE
SHADED PICNIC AREA WITH FREE BBQ'S, BUY OR BRING YOUR LUNCH
** NO PETS PLEASE **

AVONDALE DISCOVERY FARM, 550 WATERHATCH RD, BEVERLEY
6KM WEST OF BEVERLEY & APPROX. 90 MINS FROM PERTH
PH: 08 9646 1004 WWW.BEVERLEYWA.COM/AVONDALE





Station Gallery and Platform Theatre News

Artist in Residence

As we say goodbye Mervyn Beamish, it is with the knowledge that he is looking for a studio in Beverley so our town has truly impressed him. I hope you were able to visit the Gallery to see the colourful large canvases he worked on in his month at the Station.

You'll have to be on your toes to meet October's three Artists in Residence - Dorothy McInnes, Janneke Biehl, and Suzanne Crawley who are at the Station for just one week.

Exhibition Opening at the Station Gallery

You are invited to a wine and cheese night on **Friday 5th October at 6:00pm** to meet the artists and view their paintings. Entry is just \$7 (\$5 Friends of the Station). Hope to see you there.

The paintings will remain on display/for sale from 4th October to 7th October:

Thursday: 10:00am to 4:00pm

Friday: 10:00am to 4:00pm

then **Meet the Artists**, 6:00pm until late...

Saturday: 10:00am to 4:00pm

Sunday: 10:00am to 4:00pm

Platform Theatre Events

I think I can safely say that all who attended **Country Choir Bash** presented by "Voice Moves" on Saturday September 8th thoroughly enjoyed the afternoon of "Singing into Spring". It was a fantastic start to the season with our first afternoon event ever! Such positive comments were abound including the desire to hold the event at the Platform Theatre again next year (think the home made afternoon tea may have helped sway that decision!), and also the invitation from the Rossmoyne Community Choir to The Beverley School Choir to join them in in Perth for their Christmas Choir Bash 2nd December. Our congratulations to all the children and more importantly to Kelly Shaw as their inspirational teacher.



A big thankyou to Stephanie Boyle of Roleystone for donating her large water-colour painting that was raffled along with a bountiful basket of lavender and olive oil goods donated by John and Iris Ives and Haydn Rayner, plus a hefty book on Italian fare donated by Sally Smith and a bottle of wine from Ruth Murray. The lucky winners to this popular raffle were all local ladies - Carol Dorman, Olive Swan and Delys Kilpatrick.

And thankyou to such a wonderful committee - those on the gate and selling raffle tickets; photographing the event; the girls in the kitchen who hardly heard any of the choirs and certainly didn't see anything on stage; to Steve and Tim whose heads must be swelling with all the adulation from the performers (including the comment that our sound equipment is second to none). It was a mammoth effort but with a maximum result, who's complaining?

Following the success of the show there is now keen interest to begin a Beverley Community Choir. Many have already placed their names on a list, and if you haven't already done so but are attracted to the idea, then contact Sandy Shaw on 96461030 or email lewandsandy@bigpond.com



Movie Night - "THE BEST EXOTIC MARIGOLD HOTEL"

Saturday 13th October

- Gates open 6.00pm
- Indian Curries on sale pre-show or BYO picnic
- Coffee van
- Bar facilities - no BYO drinks please
- Tickets available at the gate - \$12 Adults, \$10 Friends of the Station, \$8 Children
- Feature movie commences at 7.00pm

For late stayers a 'surprise' screening at 9.15pm

Rug up if cold and, in case of inclement weather the event will be transferred to the Town Hall

On **Saturday 24th November** as part of Beverley's Harvest Festival weekend, "DIAMOND The Neil Diamond Tribute" will be playing up a storm - **Have you saved the date?** Already there is much interest in this event so if you wish to secure your seat now, tickets (\$40pp) can be purchased from Beverley Newsagency or online: www.trybooking.com/BUKX

If you would like to be included on the email list for notification of coming events (so you can forward to friends), email secretary Sarah Miller miller@reachnet.com.au

Platform Theatre Chair Drive

Station Arts continues to build its store of chairs through a "chair drive" where you are invited to donate \$20 for the cost of a chair. The tally is now **299** -just one off our goal of 300 **thanks to such a generous community!** Depending on ticket sales for the DIAMOND show we may have to surpass our goal and get another 50 or so chairs. If you would like to donate a chair, and/or become a member Beverley Station Arts Inc (Friend of the Station) please see the treasurer Pauline at the Newsagency, ring 96461042, or email beverleystationarts@gmail.com . Membership forms can also be downloaded from www.beverleywa.com (NB cheques to be made payable to Beverley Station Arts). A timely reminder that all members are welcome to attend the AGM of the Beverley Station Arts on Thursday 25th October at 6pm at the Station Gallery.

Still Missing

Could the person who borrowed our scaffolding being used to restore the old carriage at the Station please return it?

Or if anybody knows where it may be, please let us know to where is.

Dates to mark on your Calendar:

Saturday 13th October: MOVIE "The Best Exotic Marigold Hotel"

Saturday 24th November: Harvest Festival Concert "DIAMOND The Neil Diamond Tribute"

Saturday 15th December: Family Christmas Concert - FREE EVENT BYO PICNIC

Saturday 26th January: Australia Day Concert "the Beggars" AUSTRALIAN SONGBOOK

Saturday February: TBA

Saturday March: TBA

Saturday 30th March 2013 PLATFORM EASTER MARKETS

Thursday March 28 - Monday April 1, 2013 - 45TH ANNUAL ART PURCHASE EXHIBITION (presented at the Beverley Town Hall)

Gallery Open Hours

11.00am - 3.00pm

Anyone available to man the gallery occasionally, please contact Marylou or myself.

Jenny Broun

President, Beverley Station Arts

96461500 / 0419040063 / brounj@westnet.com.au





BEVERLEY SUB CENTRE

Airstrip Lighting

In the interest of saving lives, the Beverley St John Ambulance committee has been looking into lighting for the local airstrip. On occasion, when the RAC helicopter has not been available and we have needed the Royal Flying Doctor at night, the absence of airstrip lighting has been an issue. In the hope of addressing this issue, we have approached both the Beverley Shire and the Gliding Club. Both have expressed their support for us to look into the issue further and decide whether it's a viable option for our town. We would also appreciate feedback from the community on whether you feel this is worth pursuing. You can express your support by emailing us at bevsja@westnet.com.au or speaking to one of our volunteers. As this would be a community project, your input is important to us so please get involved.

Your Ambulance Cover

When you take out ambulance cover with your local St John Ambulance sub centre, this gives you complete ambulance cover Australia wide and joining is easy.

You can join and pay at the Beverley pharmacy and cover is very affordable.

Only \$77 for a family and \$47 for a single.

Please note, when you turn 18yrs of age you are no longer covered by your family cover and will need to get separate coverage.

When you join locally, you are also supporting your local sub centre.

If your ambulance cover is with a private health insurer, you may need to clarify what your policy actually covers with your particular health fund. If you only have emergency ambulance cover, you may still be charged transport fees if your callout is not deemed a true emergency. This could prove very costly for you so for peace of mind, check with your insurer what your ambulance policy entitles you to receive.

Thank You, Beverley Sub Centre.

View From The Shed Preparing for Harvest September 2012

Although harvest is still some time away we are now coming to the time of year that is often the most critical in getting prepared for harvest. We know with our machines the better we service and prepare them the more likely it is we will have a trouble free harvest.

If we know this about machines do we also apply the same logic to our own preparedness for the season ahead? In many ways as blokes we can overlook the basics of self-care; perhaps we should be wired up like a machine with filter change lights or warning buzzers like machines!

As with our machines preventative maintenance is the key to getting through the busy times without breakdowns. There are the things we can do for ourselves like adequate rest and exercise plus a healthy diet, but like our machines a bit of expert input is also required to ensure the unseen things are also functioning well.

When it comes to your health "expert" your GP is the first place to call. When you visit your GP it is also critical that YOU have some questions about what you want checked. If you think about this it's how we deal with machines, when the technician arrives we tell him what our concerns are, what we may perceive as a weak spot or a developing problem. Do the same with your doctor.

When you make that list for checks there are some essential ones, blood pressure, heart, skin, weight, sight, and hearing but you then need to add family history like specific cancers in your family or other specific issues like joint pain etc.

If you are over 40 you should also insist on relevant blood tests including PSA (prostate) and cholesterol.

The other issue is always distress remember to check your "Shock Absorbers" remember talking about issues is usually half way to a solution. Our recommendation is always *before it gets too much....TALK TO A MATE!* Your GP is again a good starting point, but family also need to be kept informed as to how things are going. Harvest can be busy, we know that, but if we prepare well it can also be very rewarding so now is the time to prepare and then we will be off and racing when the time comes!

Regards

Julian

PO Box 768 Northam WA 6401

Tel: (08) 9690 2277

Fax: (08) 9690 2253

Email: menshealth@agric.wa.gov.au



CARPET & LOUNGE SUITE CLEANING

It's Spring Cleaning Time!

- * Carpets Cleaned
- * Lounge Suites Cleaned Like New
- * Car Upholstery & Carpets Cleaned
- * House Total Clean When Moving
- * Fire & Water Damage Clean Up

- * Stripping & Sealing Floors
- * Vinyl
- * Wood
- * Slate

Phone Colin Today on

0417 971 786

Email cdgrant1@bigpond.com



Shearing Team

Available throughout the year.
Beverley area for past 25 years.

Professional team.
Good work ethic.



Call Ted Lewis
0429 938 947/9577 1456

Live Local Shop Local ! John Ives, August Winner of \$150 of vouchers!!!

Drawn at the CRC by D. Ridgway



October Participating Businesses: Beverley Bakery, Beverley Farm Services, Beverley Newsagency, Beverley Country Kitchen, Avon Trading, IGA, Talbot Nurseries, Shiatsu Health, TM Hair Design, Beverley Post Office, Avon Rose, The Garden Environment, Beverley Pharmacy, Stickybeaks and Hotel Beverley Hotel

Keep Beverley in Business



**BEVERLEY BRANCH,
COUNTRY WOMEN'S
ASSOCIATION**

www.cwaofwa.asn.au

Our Branch of the CWA did not hold a meeting in September as we were invited to Tammin Branch to share the day with a delightful lunch and to hear a very interesting guest speaker. We look forward to a report on the day at our next meeting.

France is our current Country of Study which will be of great interest.

Our next meeting will be held at the CWA centre on Thursday 12th October with a morning tea at 10.00am and meeting to follow at 10.30am.

We look forward catching up again and invite any interested potential new members to visit us and share our day with the possibility of joining us in the New Year.

Lorraine Sims
Branch Secretary.

The greatest mistake you can make
in life is to continually be afraid
you will make one.

Elbert Hubbard

CONTRACT HARVESTING

Will Be In The Area Early November



- 2 x 9760 STS John Deere
- 1 x Chaser bins + 190T paddock storage
- CBH Calibrated Moisture & Protein tester (SOPHIA)
- Autosteer + yield monitoring possible
- Large and small jobs.
- Will direct head canola.
- \$35/ha + GST + Fuel

For enquiries call Ryan on 0447 012 502
or bedfordharbour@gmail.com



The Shire of Beverley

cordially invites all

**BEVERLEY RETIREES
(65 & OVER)**

to a

LUNCHEON

WHEN: Tuesday, 30 OCTOBER 2012

WHERE: TOWN HALL

TIME: 11:30 am

RVSP: Friday, 12 OCTOBER 2012

For more information please contact:

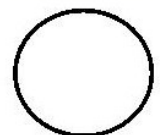
The Shire Office—9646-1200



Tear off here and return to the Shire Office by **12 October 2012**.
The following people would like to attend the Luncheon on 30 October 2012:

- 1. _____
- 2. _____
- 3. _____
- 4. _____

**Total
Attending**



Friendly Club Next Meeting

Where: Alex Miles Lodge

Time: 2.00pm

Hosts: Weight Watchers Ladies

Come along and join us,
For a fun afternoon

Enquiries Sylvia 9646 1072



- We produce neat, dense bales.
- Any length that you may require.
- We bale Oats, Barley, Wheat, Lupins, Canola, Peas, Vetches and Straw.

Small Square Baling

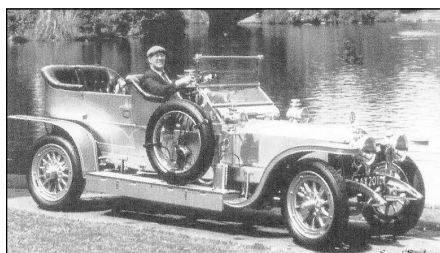
We are based on
the York-Williams
Road

Please phone
Duayne ;
0417956031.
Marion ;
0438995546

DRINK WISELY HOME SAFELY

COURTESY CAR AND
DRIVER
AVAILABLE FROM
5PM UNTIL 10PM
(Except Tuesdays & Thursdays)

This service is donations only.



Please book through the

Freemasons Tavern on
9646 1094.

Donations to be placed in the
box at the hotel.

Donations will be donated to
charities.

(eg Ambulance, Hospital etc)

Female passengers using this service
are to be accompanied by another
adult for safety implications.

WOOL BUYING



ROB THORN

0438 364 920

TOP PRICES PAID

FARM PICK-UP

PROMPT PAYMENT

CLIP PURCHASES FORWARD ON SPOT

CLIP HANDLING - SELLING

MEMBER OF PRIVATE TREATY WOOL
MERCHANTS

TRANSPORT

Daily Service

Beverley to
York, Perth
and Return



0408 914 435 Home: (08) 9646 1668

COBB & STACY STANFIELD

Email: avonexpress@bigpond.com

FOR URGENT PICK UPS RING

COBB ON MOBILE

SMALL TO MEDIUM SIZED FREIGHT

**VOICE OF THE AVON,
101.3 FM, LOCAL PROGRAMMING**

SUNDAY

8:00 - 11:00 Sunday Morning Coming Down - John
11:00 - 12:00 Sunday Classics
12:00 - 1:00 Soul and Inspiration - Susan
1:00 - 5:00 Blues
5:00 - 9:00 Metamorphosis - Bob

MONDAY

7:00 - 10:00 Mornings at Seven - Milo
11:00 - 2:00 Mustang Sally - Susan
4:00 - 7:00 Celtic Note - Joe

TUESDAY

7:00 - 10:00 Mornings at Seven - Milo
10:00 - 1:00 Around The World - Leila
1:00 - 5:00 Countrywide - Wally

WEDNESDAY

10:00 - 2:00 A Little Bit of Everything - Joe
4:00 - 7:00 Wednesday Jazz
7:00 - 10:00 Back to the Future - Frank D

THURSDAY

9:00 - 12:00 Mustang Sally - Susan
12:00 - 3:00 Kaleidoscope - Chris (includes at 12.30, What's Up Doc?)
6:00 - 9:00 Rock-n'-Roll Thursday - Milo

FRIDAY

10:00-1:00 Discography - Tess
1:00 - 3:00 Keyboard Capers - Cliff
6:00 - 9:00 Friday Night Country - Milo

SATURDAY

6:00 - 11:00 Saturday Morning Variety Show - Terry
1:00 - 6:00 Saturday Mix - Graham
6:00 -10:00 Saturday Jazz

Station Phone Number 96412422
e-mail: radio6ycr@hotmail.com

61 hours of local presenters each week.
Effective 11 September 2012

Program name change, Friday 10.00, to Discography
Program time change, Monday, 11.00 to 2.00, Mustang Sally. York Shire Report deleted.

congratulations to the Beverley Station Arts

May I, through your column express appreciation to the wonderful Platform Theatre group in presenting the recent Voice Moves Country Bash.

Such a wonderful afternoon's entertainment which we were thrilled to be part of. On our bus trip home I asked those on board for some comments::

The varied musical programme was stimulating and inspiring
Thanks for inviting us to sing
A fabulous afternoon - should happen more often
Well organised and good time keeping
Beautiful venue, food, music, wine couldn't ask for better. Many thanks
Wonderful day. Congrats to all who organised the event
Very well behaved kids
Looking forward to 2013 show
Congrats on your work at the station
Absolutely fabulous!
Bring it on...again..and again

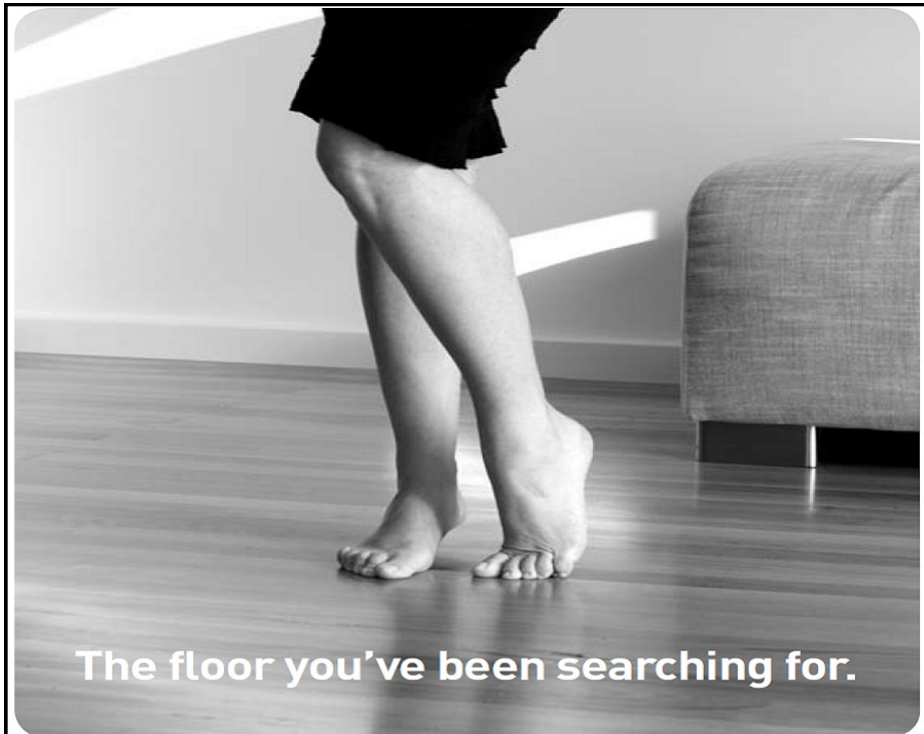
Need I say more?

Cheers until the Neil Diamond Tribute.

Coral Mahony

(Coral Mahony, and 21 others, Narrogin)

16.8.12



The floor you've been searching for.

**YORK
CHIROPRACTIC**

MacLachlan Centre,
Trews Road, York

Clinic available every week
by appointment only.

Tel: 9641 1500

**Dr Alexandra [Sacha]
Browne**

B.Sc [Chiro] B.Chiropractic
Doctor of Chiropractic



Carpet Choice is now called Choices because that's exactly what you'll find, more beautiful choices in carpet, timber, vinyl, laminate and rugs. And more inspiration from more surfaces, colours and finishes than you could ever imagine.

Find the store you've been searching for at choicesflooring.com.au

Choices by Dallimores
258 Fitzgerald Street, Northam
9622 1154

Choices
The floor you've been searching for

Beverley Youth Centre

On Friday 21st we had our Disco, numbers were down, but the children who attended had lots of fun and all going away with prizes.

Big thanks to my mum Jean and Shane Greenmount for you help on the day and Debbie- Fula Fun Karaoke, we really have some great talent in this Town.

CHRISTMAS DISCO! 7th December

Please mark in this date on your calendars!
If you are able to assist me with this upcoming event please contact me.

Wheatbelt Basketball @ York

Wednesday 3rd October-would you like to play?
12years-Youth, clinic first with Jarrod Prior (former Wildcat & Burswood Redback player) followed by a game against the Wheatbelt Cops.
Please contact Lyn Kay 0411 355 811



Beverley Youth Centre Holiday Programme

Monday 8th October

Movies & Beach in Fremantle
Cost \$15(Buy own lunch)
Ages: 9 years - 17 years

Tuesday 9th October

Free Art Project with Jenny Broun
Ages: 9years - 17years

Thursday 11th October

Free Noongar Sports Day
Cricket & Basketball-All Welcome

Friday 12th October

Dash Paintballing
Cost \$35(extra \$10 per 100 rounds)
Includes Bus, Lunch & 200 rounds)
Ages: 12years - Youth



Forms at Shire of Beverley
for more enquiries call Lyn Kay 0411 355 811



Art Classes
With
Jenny Broun

KARRADALE LIVESTOCK TRANSPORT **YORK LIVESTOCK TRANSPORT** **ABN 64 054 007 721**

- **Servicing Beverley, Brookton, York and all surrounding districts**
- **Transport of Sheep and Cattle available**
- **Members of LTA and support the local communities**

If you need your sheep or cattle transported please give us a call.

Peter Tomeo 0428 481 281



Countryside **Memorials**

Cast Stone
Granite
Marble
Plaques

Added Inscriptions
All Repairs and Restorations



25 YEARS PROFESSIONAL EXPERIENCE
FREE DESIGN AND QUOTE

Servicing All W.A. Country Areas

9622 5544

OXTER SERVICES

www.oxter.com.au

oxter@westnet.com.au

ROSE SHOW - 2012

Friday, 19 October 2012 in the Beverley Town Hall
Opening at 12.30 pm

SECTION "A" ROSES

1. BEVERLEY CHAMPIONSHIP - six roses, at least four colours
 2. Rose - RED
 3. Rose - PINK
 4. Rose - YELLOW or GOLD
 5. Rose - CREAM or WHITE
 6. Rose - BI-COLOUR
 7. Rose - FANCY COLOUR
 8. Rose - PEACE
 9. Roses - THREE DISTINCT ROSES
 10. Four Roses - one (1) variety - one bud showing colour, one half open, one exhibition and one full blown.
 11. Container of POLYANTHUS or FLORIBUNDA roses;
(a) one variety (b) mixed
 12. VASE OF ROSES - not more than nine blooms
 13. Vase of FULL BLOWN ROSES
- DAVID AUSTIN ROSES
14. One cut
 15. Container of David Austin roses

SECTION "B"

16. A MODERN ARRANGEMENT with roses predominating.
17. ARRANGEMENT OF ROSES (for mantelpiece) any foliage.

**EXHIBITS MUST BE READY FOR JUDGING
BY 11.00AM.**

TROPHIES

ROSE BOWL for Beverley Championship.
RUNNER UP to the Championship.
BEST ROSE
NEW EXHIBITOR to the Rose Show.

RULES

ALL ENTRIES - 20 cents each.
ALL ENTRIES must be ready for judging by 11.00am on the morning of the show.
Enquiries - Les Heal 9646 1193
ALL ENTRIES must be grown by exhibitor, except in section "B".



BEVERLEY HISTORICAL SOCIETY

There were eight members at the September meeting of the Society with four apologies.

Combining recent discoveries of the pre-WW1 Beverley Scout Troop 30 with a previously donated complete scout uniform of the 1960s we have made a new display in the Beverley Room of the Dead Finish Museum. Thanks to Peg & Emma.

A survey of the significance of items in our Dead Finish Museum collection was carried out from Mon 2nd – Wed 4th September by Heritage Today consultant, Cathy Day, and her technical assistant, Shaun. Members met with Cathy on Monday 2 Sept at the museum and we were asked to identify those items which we thought had the most significance. Over the next (freezing) days Cathy took photos of these and other items she considered significant. Members were present each day to locate items and to "tell the story" of the item as an historical relic. All this data plus short histories of Beverley and of the Dead Finish Museum will be presented in a report to the Society with recommendations for improving our museum. Cathy has provided this much appreciated service to us free of charge, as the data will contribute to her doctoral thesis on small museums.

At the same time, we had a visit from seven officers from the Heritage Council of WA & the State Heritage Office. Along with some Beverley Shire Councilors they inspected the Dead Finish Museum on one of those freezing cold days and had a brief talk to members. A meeting with other Shires at Beverley Shire Office followed and the Heritage Council outlined some of their policy changes and new initiatives.

Of great interest to locals & tourists is a new website

<http://inherit.stateheritage.wa.gov.au> which has maps, photos and information of every site listed in the Municipal Heritage Index for each shire in WA. The 50 sites in the Beverley Heritage Index, identified in the 1990s, can all be readily accessed through this site.

Our next meeting is the AGM to be held at 2pm, October. Our regular monthly meeting will follow. For further information please contact the Secretary on bhsdeadfinish@gmail.com.



York Estate Agents – (Beverley Division)

Local Residential & Rural Experts, honest and caring for your requirements. Whatever you are looking for, be it your first home, or retirement home, a hobby farm, a dream block of land or investment, we can help with a can do Professional Attitude.

Contact the Team at York Estate Agents for all your Real Estate requirements. Office: 72 Avon Terrace York WA 6302

Residential: Helen Stubing 0407 964 611 Your Local Sale Rep.

Rural: Michael Bawden 0403 268 158 FREE Appraisals

Rentals: Jenette Callaghan 0418 929 011

Office: Phone: 9641 1335 Fax: 9641 1334

Email: Helen: stubing@oceanbroadband.net

Office: yorkfn@westnet.com.au

Web: www.yorkfn.com.au

OUR SERVICES

Photocopying

Photo Kiosk-Instant Photo's

Printing-A4 & A3 Colour

Binding-Wire, Thermal & Plastic

Desktop Publishing

Laminating-All Sizes

Negative & Slide Conversion

Tape & Record to CD Conversion

Send/Receive Faxes

Send/Receive Emails

Beverley Bulletin Publishing

Book Exchange

Jigsaw Loan

GOVERNMENT SERVICES

Centrelink Access Point

Government Computer Kiosk

Medicare Claim Booth

Dept. of Veteran's Affairs Info

Australian Taxation Office

Senior's Computers

Royalties for Regions information

TRAINING FACILITIES

Group Training and Workshops

One on One Training

Westlink Broadcasts

Video Conferencing Suite

OFFICE AVAILABLE

For Daily Rental

*******Suggestion Box*******

Help us to improve our services to
the community.

Have a suggestion? Then write it
down and pop it into our
suggestion box located in the
centre.



OPENING HOURS: Monday – Friday 8.30am – 4.00pm

132 Vincent Street, Beverley WA 6304 Phone: 08 9646 1600 Fax: 08 9646 1295

Email: beverley@crc.net.au Website: www.beverley.crc.net.au

WILD WOMEN OF THE WEST SEMINAR 2012 – 'Stop and Smell the Roses' MONDAY 5TH NOVEMBER 2012



JENN MORRIS has an outstanding background in sports and business and we are proud to be bringing her to Beverley as a keynote speaker for the Wild Women of the West Seminar. Jenn draws on the potent parallels between sport and business in order to reveal the common values and attitudes required for success in all aspects of life.



KAREN TIGHE is a keynote speaker who will be discussing her journey of living with partner Glenn Mitchell (ABC Sports presenter) who suffers with bi polar and depression. Karen will be sharing her life story of balancing family and career.



BOB MELVILLE of Melville Nurseries has been in the Rose Industry for 50 years and he is held in high regard in the horticultural industry. As a guest speaker he is covering growing roses, water conservation and recycling and he will have roses for sale on the day.



FLEUR McDONALD, Author of Purple Roads, Blue Skies and Red Dust has penned an exclusive feature article for our guests and a little special surprise.....

Wild Women of the West is a day of pure indulgence for women - fully catered, raffle prizes, complimentary gift bags for each guest and there is also every woman's favourite shopping stalls. Don't miss out on this fantastic day, Tickets go on sale Tuesday 2 October \$40 each from the Beverley CRC. **Please note this event is not suitable for children**

COMMUNITY DIRECTORY

We would like to thank all the people that responded and submitted their contact details to be included in the soon to be released Community Directory. A very special thank you to the businesses that have supported this new venture, your contribution is greatly appreciated.

Proudly Supported by



Department of
Regional Development and Lands



ROYALTIES
FOR REGIONS



A Ticket to Nowhere

Farewell Beverley



After 8 years of struggling with the Department of Immigration and Citizenship, some \$50,000 lighter just to keep ourselves in Australia, the final order has come. It took us immense stress, sweat and tears, but that's now behind us.

We are summoned to be out of the country, by November 28 this year.

Although having no idea where and how we are going to find a place to live, we have now accepted that this is what it is and we shall make the best of it.

Enough is enough!

Our future will be somewhere back in Europe probably France.

We want to say goodbye to Beverley and the happy years we have spent here, making good friends. We love Australia. Over the years we have travelled some 40,000km, through this beautiful continent,

But we will never forget Beverley. It will always stay in our hearts.

We, **Julienne and Han Verdel**, would like to invite friends, known and unknown,

To share a good glass of Wine to say goodbye at:

Date: Saturday November 18th **Time:** 4.00–6.30pm

Venue: Station Art Gallery, Vincent Street, Beverley

RSVP before November 8th via Email: Verdel@burnleepark.com.au

GJ & VJ SEEBER
trading as

BEVERLEY PLUMBING & GAS SERVICES

Established in Beverley since 1997
Your Local Licensed Plumber and Gas Fitter
Servicing Beverley & Surrounding Districts

PLUMBING

- ★ ACCREDITED WATERWISE & ENVIROWEST PLUMBER
- ★ SEPTIC INSTALLATIONS
- ★ SEWERAGE CONVERSIONS
- ★ MAINTENANCE & INSTALLATION of all PLUMBING REQUIREMENTS
- ★ INCLUDING BACKFLOW INSTALLATION and TESTING
- ★ NO JOB TOO SMALL OR TOO BIG
- ★ HOLDS CLASS 'A' PLUMBERS LICENCE

GAS FITTING

- ★ LICENSED (UNRESTRICTED) GAS FITTER for all ASPECTS of gas
- ★ MAINTENANCE and INSTALLATION
- ★ AUTHORISED SERVICE AGENT for ELECTROLUX

Mob: **0418 929 141**
Fax: **9647 2109**
Tel: **9647 2115 (after hours)**
Email: **krowdrah2@bigpond.com**

Water Auth Lic No. PL216
Gas Lic No. 386
Back Flow Lic. 103



Beverley Playgroup Inc.

Beverley Playgroup meets every Thursday at 9:30am in the old Kindy building on Vincent St (next to the Shire, behind the blue fountain).

All children aged 0-4 years and their parents/carers are welcome to attend. Cost \$2 per family p/ week. Please bring a piece of fruit to share, water bottle and hat.

Please Note No Playgroup during School Holidays

For further information, please contact Marissa on 0411 477 572



GYM MEMBERSHIP



Don't forget,
Gym Memberships can be
obtained from the
Shire office or from
www.beverley.wa.gov.au.
Beverley Gym
The Old Courthouse,
Vincent St.

USE TOOTHPASTE TO CLEAR UP HAZY CAR HEADLIGHTS



DALE COMMUNITY GROUP

MELBOURNE CUP LUNCHEON

DATE: TUESDAY 6TH NOVEMBER

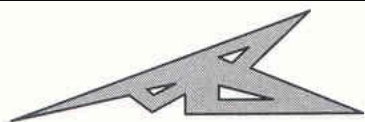
TIME: 11 AM

VENUE: DALE HALL

BEST HAT DOOR PRIZES
SWEEPS AND RAFFLES

TICKETS \$30
ON SALE 29TH OCTOBER

ANNE FISHER 9647 2055



BEVERLEY ELECTRICAL SERVICES

**Servicing Beverley, Quairading
and Brookton**

**For all your Electrical & Solar needs
Please call**

KARL SMITH

0429 887 535

PO Box 2 Beverley WA 6304

Email sales@beverleyelectrical.com.au

EC 006578

ABN 86 966 138 620

BUILDER / CARPENTER

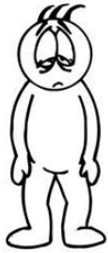
- New Work
- Additions
- Alterations
- Roofing and gutters
- Decks and pergolas
- Gyprock and flushing
- Fencing
- General property maintenance

All work by tradesman with
25 years experience

Phone Dean: 0429 649 781



Health Pharmacy York **FATIGUE**



Do you feel like you're always running on empty?

Do you survive on caffeine and sugar to get through the day?

Make an appointment with our qualified

Naturopath today!



Naomi Rogan

Specializing in:

- Naturopathy
- Herbal Medicine
- Homeopathy
- Iridology
- Flower Essence Therapy
- Holistic Counseling
- Nutritional & Dietary Advice
- Hormonal Balance for Men & Women
- Allergy Testing

Registered provider with all major health funds
Available Fridays by appointment, contact Health Pharmacy York
105 Avon Terrace, York WA, 6302
Phone: 9641 1044
Email: yorkadmin@healthpharmacy.com.au

BILL CHAMBERS

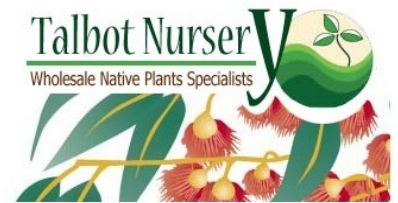
**Chartered Accountant
&
Registered Tax Agent**

Tax return preparation

Financial and accounting advisory services

Office hours:
Wednesday
9.15am - 5.00pm

129 Vincent Street, Beverley
9646 1566 (Monday - Friday)



Your Beverley Nursery

Time to place your seedling orders for planting in June 2013. If you are seeking large numbers or unusual species, please order early.

SPECIAL: early orders received by the 20th of November will receive a 10 % discount off the total price.

E-mail sales@talbotnursery.com.au
or phone/fax Lisa on 96461716.

Northam Physiotherapy



**Northam 8am - 6pm
Monday to Friday**

**York Cunderdin Toodyay
By Appointment**

**Ph: 9622 5040
Fax: 9622 2800**

Email: northam.physio@westnet.com.au

ROYAL ANTEDILUVIAN ORDER OF BUFFALOES



**GLE (Inc)
QUAIRADING BEVERLEY NO.163**

We meet the first Wednesday of every month at the Masonic Lodge, Hunt Road, Beverley

*The objects of our order are
Philanthropy and Good Fellowship.*

For more info contact
Bill McDonald on 9646 0746



Research Updates:

Trial of a practice nurse model of care for chronic cardiovascular and Respiratory conditions

accounts for 70% of all current health expenditure (AIHW 2006). Across the Wheatbelt, we have higher prevalence of respiratory and cardiovascular disease per capital, and more avoidable hospitalisations for such conditions than the Western Australia average (PHIDU 2005; Rural Health West 2009). Coupled with the under-utilisation of general practice and allied health services across the catchments (Medicare Australia 2011), an alternate model of primary care is proposed. A structured approach to chronic disease management has been shown to be effective in reducing hospitalisation and contribute to patient empowerment.

General Practice in Australia delivers the lion share of medical care (DoHA 2009). The Australian Government has identified General Practice specifically as key to tackling the growing chronic disease problem (DoHA 2009; National Health and Hospital Reforms Commission 2009). Incidental to this, a number of incentives were introduced. Among these include the Practice Incentive Payment for employing practice nurse.

In this research we aim to trial a proactive practice nurse model of multidisciplinary care in rural General Practice with the objectives of reducing avoidable cardiovascular and respiratory hospital presentations and improve patient health outcomes.

This project is currently funded by the WA Department of Health under its State Health Research Advisory Council Translation Research Project 2011, for a year. The investigators for this research are David Lim (WGPN), Elizabeth Geelhoed (UWA), Tony Mylius (WACHS) and Melissa Vernon (WACHS). Human research ethics have been approved by the Royal Australian College of General Practitioners and the WA Country Health Service.

Thus far, we have engaged General Practices in York, Beverley, Wongan Hills, Kellerberrin, Merredin, Corrigin, Kondinin, Southern Cross (Yilgarn) and Toodyay in the pilot project. In the coming months, David Lim will be approaching other sites in the Wheatbelt for expression of interest.

If you would like to know more meanwhile, please do not hesitate to contact David Lim on gum@wheatbelt.com.au or phone 9621 1530.

******The Beverley Medical Practice is looking for volunteers to participate in a comprehensive care model study.******

PRIMARY HEALTH SERVICES available to the community of Beverley

You can refer yourself or your child to the following health professionals:

- **Child / School Health** – phone 9646 1210
- **Dietetics** – phone 9690 1320
- **Occupational Therapy** – phone 0429 466 224
- **Physiotherapy** – a **Doctors referral is required** – please send to PO Box 142, Beverley or drop in to Beverley Hospital
- **Podiatry** – a **Doctors referral is required** – please send to PO Box 142, Beverley or drop in to Beverley Hospital
- **Social Work** – phone 9690 1320
- **Speech Pathology** – phone 9690 1321

These services are provided by WA Country Health Service and are free of charge.

Services are provided at the Primary Health Building, on the corner of John and Forrest Streets, Beverley. There may be a waiting time for services.

If you have any concerns about your own health or your child's health and development, please phone the relevant health professional to discuss your concerns. Alternatively, you can speak to the Child Health or School Health Nurse, or your GP, to discuss your concerns and to determine the most appropriate referral.

Avon & Central Primary Health – Promoting Healthy Lifestyles



Live Local, Shop Local

The Beverley Business Network's monthly Local Business Profile:

Shiatsu Health is a new home based business in Beverley. Owned and operated by Michele Williams. Michele is a long-time resident of Beverley, well known to locals through her community involvement and previous occupations including six years as the town postie. Michele has had an interest in health and particularly body work for many years but decided to specialise in Shiatsu a few years ago. Michele travelled to Melbourne where she lived, studied and worked for two years to attain her Diploma in Shiatsu and Oriental Therapies and has now returned to share the benefits of this excellent Complimentary Therapy with the residents of Beverley. Shiatsu is a Japanese form of massage based on the Chinese theory of medicine, where the client is fully clothed. The word Shiatsu means finger pressure but fingers, palms, elbows and feet can be used during a treatment. The application of Shiatsu can assist in many ailments and is also deeply relaxing giving an improved sense of health and wellbeing. Lasting for 1.5 hrs including consult and diagnosis, followed by a short feedback session. Sessions cost \$70.00 but Michele offers a first treatment special of **\$50.00**. For bookings or enquiries phone 0438461513 Michele is registered with the STAA.



Upcoming Events: Diabetes Support Group Demo October 8th(TBC) and Mundaring Market Stall October 14th (TBC).

Talbot Nursery



Talbot Nursery, located on the York Williams Road, is a wholesale nursery, open by appointment only. Lisa and Luke Blanch opened up in 2011, as Lisa is a qualified horticulturalist, and they both have a commitment to the environment, alongside a keen interest in native plants and bush foods.

Our clients attest to the high quality of revegetation seedlings, which have successfully established in the field. This due to the production facilities, where our main shade house has a retractable roof to allow for hardening off before the planting season begins. Other factors are deep cell trays, biologically active fertilizer, qualified staff and attention to detail.

This season, the nursery is also offering advanced plants, so local gardeners can enjoy the same success with some of our beautiful flowering natives that are suited to clay soils. Keep an eye out for these at local retail nurseries, or when Talbot Nursery travels to markets and fairs around the district. Phone/ Fax: 9646 1716.

Keep Beverley in Business.

Beverley Station Arts presents

Platform Theatre

Movie Night

Saturday 13 October 2012

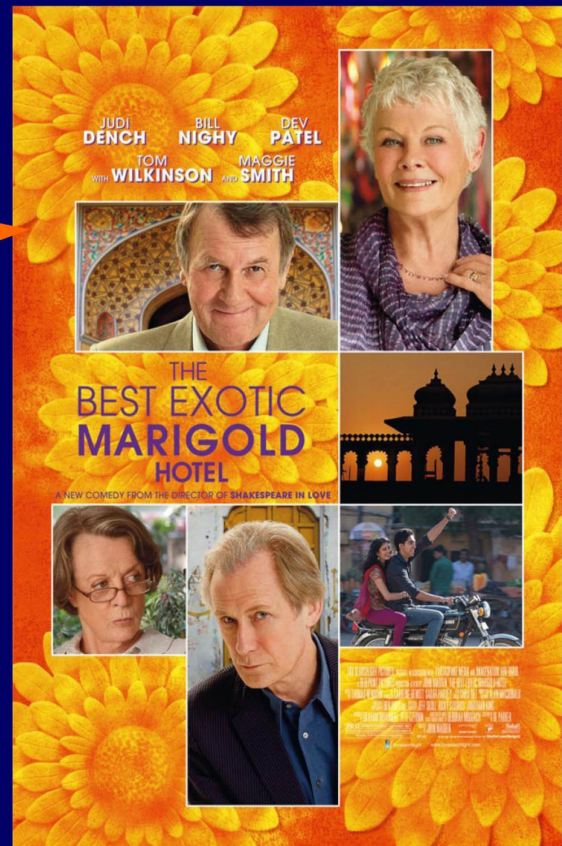
6pm
Gates Open
Bar Available
NOBYO Drinks
Indian Curries
on sale pre-show
OR
BYO Picnic
Coffee Van

Tickets available at the gate

Adults - \$12

Friends of the Station - \$10

Under 12's - \$8



FEATURE MOVIE COMMENCES AT 7.00pm

FOR LATE STAYERS A 'SURPRISE' SCREENING AT 9.15pm

Rug up if cold and, in case of inclement weather the event will be transferred to the Town Hall
For more information contact Jenny 9646 1500

T.M. Hair Design

Family Hairdressing at reasonable prices.
Appointments essential.

Spring Special..... Book a Shampoo & Blow Dry & receive
a Semi Permanent colour for just \$10.00.

Due to its popularity we have extended this offer.

At Secrets... Spring is in the air & the new season fashion is here.

There are some gorgeous colours & styles to be had.

Weekly bargains available in store as we make room for more new
garments still to come.

As we start the countdown to Christmas the store will take on loads of
"lovelies" to make you Christmas shopping experience affordable,
comfortable, convenient & without the need to travel in the heat.

We offer our complimentary wrapping service for you.

Come in choose your gifts...call back & they will be all ready
to place under you tree.

If there is any way we can make it easier for you let us know.

We will also have Christmas Gift Vouchers available
so that you have the fun of giving
and the recipient has the fun of shopping.

An all round shopping experience right here in town.

We welcome browsing

even if you go elsewhere for your hairdressing needs.

Call in to 100 Vincent St;

Or Phone 9646 1122.



Open Gardens Australia
CONGRATULATIONS

to the Lane Family

for their successful open garden

John's Rustic Touch.

Extremely enjoyable

for over 200 visitors

and helpers.



Unique Strokes W.A.
Painting & Decorating

Reg. No. 4236

ROB BAIN

QUALIFIED LOCAL TRADESMEN

For Guaranteed Traditional
Workmanship & Prompt Free Quotes

Phone: 08 9647 2012

Mobile: 0418 904 013

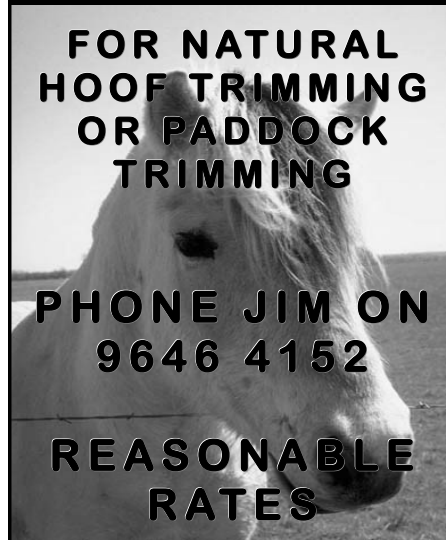


EQUESTRIAN

FOR NATURAL
HOOF TRIMMING
OR Paddock
TRIMMING

PHONE JIM ON
9646 4152

REASONABLE
RATES



**BLECHY'S TYRE
AND BATTERY**

155 -13 ... \$49

Suits Corolla/Nissan/Mazda

205/65 - 15 ... \$90

Suits Falcon/Commodore/Camry

10R-15 ... \$130 + tax

Suits Hilux Landcruiser Patrol

Ⓢ All Major Brands

Ⓢ Second Hand

Ⓢ Batteries, Repairs, Fitting, Balancing

Bridgestone Preferred Dealer

Ph/fax Mick on 9646 1607 or a/hrs 9646 1577

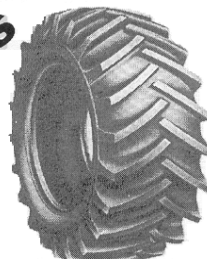
48 Dawson St.



(Old Telecom shed)



City Prices



Tickets are still available for our **Celebration Year of the Farmer Event** on **Saturday 27 October** in the **York Town Hall**. Local Band, **“Bridging the Gap”** are ready to perform. Local **Caterers in the CWA** are ready to serve. We have some great items for Auction. **Doors open from 6.30 pm**. Dress up and join with farmers, ex Junior Farmer and Rural Youth members and industry providers from around the state for a night to remember.

Call 9486 2100 for credit card Purchase of Tickets. Early Bird offer closes 30th September.

Thank you to the Shire of York, Bendigo Bank branches of York, Goomalling and Collie, Cygnet Bay Pearls Broome, Amble-Inn B&B Cervantes, TM Hair Design Beverley, Vines Resort & Country Club for Sponsorship.

Any queries call Kevin Binning 9641 4047 or Jeff Murray 0428 925 662

Did you know the **first club of Junior Farmers was formed in Harvey in 1935** and the first club to accept female members was at Yoolgarilup (near Busselton) in 1938/39? The **first female State President was elected in 1970**, being **Helen Langley from Brookton**. Helen worked in the Brookton Shire Council office where up till the late 70's or beyond, this position was only for 'single' young females.

The WAFarmers Federation has yet to see a female State President. There have been numerous name changes and amalgamations since 1890 when early farming organisations came into existence. 1912 - Farmers and Settlers' Association was formed, and merged with the Wheatgrowers' Association. This created the first official version of WAFarmers as it exists today. From that merger the Country Party (forerunner of today's National Party) was established as its political voice in 1913. 1919 - Westralian Farmers separated from the Farmers & Settlers. 1930 - separation of Primary Producers Association and Wheat Growers Union formed. 1932 saw a joint committee form a group that has now become Cooperative Bulk Handling (CBH), to explore bulk wheat exports, financed by Westralian Farmers. The list of **achievements** and changes **goes on** and so it will while we are free to make decisions and act upon them. Join in **celebrating on 27 October in York**.

Don't forget our **AGM in Tammin**
on **Tuesday 23 October**.

Guest speaker: [Geoff Hall](#) on: **“Is Your Trust Deed Up to Date?”**.

The Discretionary Trust is a common and widely used structure in Estate and Succession Planning, Asset Protection and Tax Planning. Many trusts, however, may no longer achieve what they originally set out to achieve.

Geoff Hall, agribusiness director and succession planner of RSM Bird Cameron, shall describe what trusts are, how useful they are in farm succession planning, and discuss current issues that may require your trust deed to be amended.

If you have a trust, this seminar will give you the information you need to determine whether your trust suits your current situation and what you need to consider in fixing it. Geoff Hall has had over 30 years experience as an accountant in the West Australian Wheatbelt providing taxation and succession planning services to farming families and is ideal to talk about trusts in an easy to understand and practical way.

All welcome to attend – RSVP by Friday 19 October to Tanya Nicholls 9637 1141, Tammin P&C, for Catering Purposes – thank you

Hay Rolling



- ✓ Neat, dense, consistent bales
- ✓ Hay and silage
- ✓ Cover edge net-wrap
- ✓ Up to 6 foot diameter bales
- ✓ 4 foot wide bales
- ✓ Professional service
- ✓ Experienced local contractor
- ✓ Servicing entire Beverley Shire

Mower conditioning can be arranged if required.
Notification on the day your hay is cut (or before)
is essential
- preference will be given to clients who do so.

Please call **Scott or Sharyn Morrell** for more
information

Ph: 9646 0646 (a/h)

Mob: 0427 728 822

We also offer contract sowing, spraying, hay raking and
harvesting services.

GPS

I have a little Satnav
I've had it all my life
It's better than the normal ones
My Satnav is my wife

It gives me full instructions
Especially how to drive
"It's 60 kilometres an hour", it says
"You're doing sixty five"

It tells me when to stop and start
And when to use the brake
And tells me that it's never ever
Safe to overtake

It tells me when a light is red
And when it goes to green
It seems to know instinctively
Just when to intervene

It lists the vehicles just in front
And all those to the rear
And taking this into account
It specifies my gear.

I'm sure no other driver
Has so helpful a device
For when we leave and lock the car
It still gives its advice

It fills me up with counselling
Each journey's pretty fraught
So why don't I exchange it
And get a quieter sort?

Ah well, you see, it cleans the house,
Makes sure I'm properly fed,
It washes all my shirts and things
And - keeps me warm in bed!

Despite all these advantages
And my tendency to scoff,
I do wish that once in a while
I could turn the damned thing off.

By Anon.

Remote Area CONTRACTING SERVICES

Water Supply
Windmills & Accessories
Solar Pumps:
Sales, Service, Installation
Fencing & Yards
Trenching & Polypipe Laying

Agents for:
Mono Pumps, Ebara Pumps and
Pressure Systems

**Remote Area Contracting
Services Pty Ltd**
PO Box 638, York WA 6302
Tel: 9643 1047 Fax: 9643 1039

Errol Squire
0438 682 687

Dalene Davies
0427 021 146



RATES NOTICE

Please remember that rates must
be paid by Monday 15 October to
receive the discount or to join the
instalment plan.

**BEVERLEY COMMUNITY
PARALEGAL AND REFERRAL
SERVICES**

ABN 58 388 894 383

Registered as a Charitable Organisation

INFORMATION ONLY

Contact phone numbers and email addresses
for further info only

IMMIGRATION

I have had many requests for information on Immigration: The Department of Immigration was contacted on the 20th of September, a brief summary is provided as the Sponsorship alone, entails 140 A4 pages.

VISA Information: There are only 2 types i.e. Temporary and Permanent e.g. Employment, Tourist, Student (temporary), Fiancé/Partner, Mother, Father, Brother, Sister, (Living Overseas) Permanent.

Fees: Phone 131 881, Department of Immigration

Fiancé/Partner: Sponsor is responsible for all medical bills. Must have letter of employment, Income tax returns for the last 2 years: and financial support for 2 years. X-ray's, blood test, VISA Application Fee for the department may verify details, in the application, of the fiancé: birth certificate, character reference and police clearance (overseas).

If the Australian citizen travels overseas and does get engaged, proof needs to be supplied. If so, the sponsor, (Australian Citizen) must get married within 9 months of date of engagement. During this period all emails to be kept, proof of phone call via bills, record of payments made to fiancé overseas, bank or

Western Union statements or receipts. Proof along with a Certificate from an Australian Marriage Celebrant. Clearly showing both parties full name, place and date of birth. Time and date of Marriage Ceremony, receipt for payment of fees.

To check TOTAL COST of fees, types of VISA'S etc. OR To discuss or to make an appointment please Immigration (VISA) 131 881 or to download your copy go to:

<http://www.immi.gov.au/allforms/pdf/47sp.pdf>

AGE CARE

Radio National Reports on 14.09.2012

New Building Laws are being proposed, these laws, though Age Care friendly is expected to apply to **all future buildings**. All stake holders, Age Care CEO, Government bodies, Housing Authorities, all favour such changes. Namely (summary)

1. SIDE RAILS– Running from one side of the front rooms to the rear of the building. i.e. Fitted alongside lounge, bedroom, kitchen, laundry, bathroom and lastly toilets.
2. Also there is a move to have the position of the toilets moved from the rear of building to the front of the building, opposite Lounge. Reasons: Older people have falls, accidents happen in all families young or old and cause mobility problems. Convenient for all to have the toilets close by (front) including guests.

Mal Roberts
08 9646 1932

Sylvia Seddon (Sec)
08 9646 1072

**CRANA ABORIGINAL
CORPORATION INC.**



ABN: 29 274 874 875

Registered as a Charity Organisation

INFORMATION ONLY

Crana has been invited to a meeting being held at 10am on Tuesday 23 October with the venue to be advised.

Beverley-organised by South West Aboriginal Land and Sea Council.

PROFESSOR PAT DODSON

Father of the Reconciliation for the First Indigenous people spoke to Radio National ABC on September 20th,

Re: Push to have a referendum to recognise the Indigenous people in the Constitution.

It will now be postponed to mid-term next elected government. He goes on to say that the Australians need more clarity of principles of what recognition is all about. An expert panel is being formed to advise the Federal Government next term. So far there appears to be no problem with the parliamentarians of either of the parties.

CRANA members do help out with chores, small jobs where their services are needed e.g. by both indigenous and non-indigenous locals.

Mal Roberts is the Authorised person to handle matters with: The Office of the Registrar, Indigenous Affairs, The Australian Tax Office and members of Parliament. All our work appears up to date.

N.B. he's also of assistance to Indigenous persons living in Northam, Brookton, York, Quairading and Kellerberrin.

Mal G. Roberts Mitchell Henry
Advisor President

**C & B SOUTHERN RUN
TRANSPORT**

DELIVERING TO: BEVERLEY, BROOKTON, PINGELLY
MONDAY, WEDNESDAY AND FRIDAY.

DELIVERY OF GENERAL FREIGHT, AND CHILLER GOODS
FROM CANNINGVALE MARKETS DEPO.

**PLEASE CONTACT PAUL BALDWIN ON
0417 953 968 OR AH 08 9646 0461.**

Big enough to do the job, small enough to care.



Injury Control Council of WA
and WA Police are holding
**York Community
Safety Day.**

- > Saturday October 13th 2012
- > 10am – 4pm
- > York Recreation Centre

Community Safety Month is held every October and reminds us that we all have a role to play in making our communities safer. The Injury Control Council of WA is encouraging everyone to get involved and support this safety awareness-raising campaign.

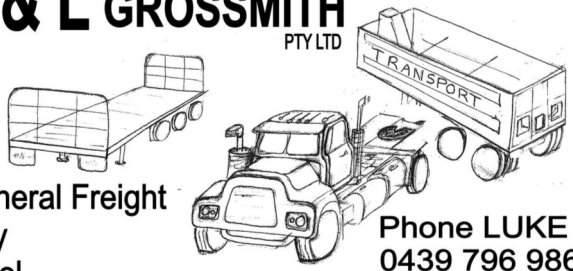
To find out more please visit
<http://www.iccwa.org.au/community-safety-month>
and also follow us on Twitter and Facebook.



- POLICE PIPE BAND**
- FOOD STALLS**
- RAC RESCUE CHOPPER**
- RIDES FOR KIDS**
- SAFETY DEMO'S**



M & L GROSSMITH
PTY LTD



- *General Freight
- *Hay
- *Wool
- *Sand Gravel
- *Bulk Grains & Fertiliser

Phone LUKE
0439 796 986
9646 1983
PO Box 342
Beverley WA

brooktonhounds
A COUNTRY RETREAT FOR YOUR BEST FRIEND

- Brookton Hounds Pet Boarding:**
- 🐾 Wide open spaces
 - 🐾 Huge enclosures
 - 🐾 Family run business
 - 🐾 Fresh country air

Contact Murray and Liz on:
t (08) 9642 1875 m 0409 103 166

www.brooktonhounds.com.au





THE BLUE LINE

Beverley Police Station

57 Hunt Road, Beverley WA 6304

Hello All,

FACEBOOK

Let me start with saying this "If you have nothing nice to say, **DO NOT** say anything". It is becoming an increasingly familiar story that I hear time and time again of people who sit behind their keyboard or mobile phone and make disparaging remarks towards other people. What amazes me is that this is not kids, but grown adults.

I understand that you don't need to like someone, but you don't need to let the world know this. Making these comments on facebook leaves you wide open for civil action and possibly criminal action.

If you don't like the comments or you are making those comments, may I suggest that you get off facebook.

York Community Safety Day

York Police in partnership with the Shire of York and Injury Control Council of Western Australia will be hosting a community safety day on Saturday 13 October, 2012 at the Recreation Oval in York. The event will be open from 10am to 4pm. There will be prizes and giveaways and free rides for children.

Present on the day with displays will be;

- ⇒ Work Safe
- ⇒ Kids Safe
- ⇒ Road Wise
- ⇒ Farm Safe
- ⇒ Royal Life Saving Society of WA
- ⇒ Surf Life Saving Society of WA
- ⇒ Red Cross
- ⇒ Fire and Rescue
- ⇒ Saint John Ambulance
- ⇒ Motorcycling Western Australia
- ⇒ Community Engagement Division (Crime prevention and safety)
- ⇒ On display WA Police BAD Bus (Blood and Drug testing) – Police Concept Motorcycle
- ⇒ RAC Rescue Helicopter will be on display for part of the day (unless deployed to an emergency)
- ⇒ Police Pipe Band

Beverley Police Golf Day

Don't forget the police golf day on Saturday 6th October 2012 at the Beverley Golf Club. All proceeds are going towards the WA Police Legacy and the Beverley Golf Club. The cost is \$30 and promises to be a great day. Flyers promoting the event are posted up around the town. If you have any further questions then give me a call on 9646 3333 or email me at beverley.police.station@police.wa.gov.au

NEW OFFICER

Well it has taken some time, but finally the second police officer for Beverley has been selected. Ian Roberts and his wife Annette will be the newest arrivals to Beverley. I am hoping that their arrival will be soon. I am sure you will all welcome them to the town when they do arrive. On the subject of arrivals, I will be going on holidays for a few months and looking after the police station and the town whilst I am away will be Karen Berry. Karen is not new to Beverley. She was here with Kerry a couple of years ago before I arrived. Karen knows the town and is looking forward to working with the community of Beverley again.

Even though I am on holidays, you will still see Christine and I around town as we won't be going too far. Good luck to the farmers over harvest and everyone stay safe over the summer period.

Darrell

beverley.police.station@police.wa.gov.au

Ph: 9646 3333

Beverley District High School

September has been dominated by sport both on and off our school site.

We had our Faction Carnival at the end of August and then Pingelly hosted the Interschool sports two weeks later.

Off site, ex students -

Justin Mann, Elyse Alexander, Dale, Robbie and Blake Wansbrough, Sarah Owens, James Adams, Catherine Britza Paul Grover, Gemma Ridgway, Scott Minchin, Kira Strange, Matt McLean, Stuart Murray,

And our teachers, Chantelle Meade and Narelle Bailey were involved in premierships wins in both the Avon league football and Avon netball.

Congratulations to the Beverley Football Club and Netball Club for bringing home two flags.

Faction Athletics Carnival - Friday 7 September

Boys Results

6 yr Champion: Thomas Melick

Runner up: Nathan Styles

7 yr Champion: Cody Stanfield

Runner up: Aaron Schilling

8 yr Champion: Declan Kilpatrick

Runner up: Campbell Gors

9 yr Champion: Lenny Ugle

Runner up: Samuel McLean

10 yr Champion: Callum Overington

Runner up: Antwon Ugle

11 yr Champion: Tarkyn Henry

Runner up: Kelvin Quartermaine

12 yr Champion: Luke Gollan

Runner up: Luke Del Borrello

13+ yr Champion: Jeremy Stevens

Runner up: Jess O'Loughlin

800m Winner: Thomas McLean

Runner up: Lachlan McLean

1500m Winner: Leyton Ugle

Runner up: Lachlan McLean

Faction Results:

1st – Eyre 537

2nd – Dale 522.5

3rd – Forrest 489.5

Records Broken:

Declan Kilpatrick 8 yrs 100m 16.75sec

Grace Fisher 9 yrs 200m 39.03sec

Grace Fisher 9 yrs old 100m 17.13 secs

DALE 9 yr Mixed Circular Relay 1.15.12

Girls Results

6 yr Champion: Ella Cooke

Runner up: Grace McLean and Charlotte Murray

7 yr Champion: Mackenzie Thomas

Runner up: Rebekah Aynsley & Majella Henry

8 yr Champion: Anneliese Mellick

Runner up: Stevie Grossmith

9 yr Champion: Grace Fisher

Runner up: Kaitlyn Shaw

10 yr Champion: Stella Wilkinson

Runner up: Rebecca Grover

11 yr Champion: Jazmyn Hammond

Runner up: Georgina Fisher

12 yr Champion: Jessica Appelbee

Runner up: Michaela Quartermaine

13+ Champion: Vernetta McKelvie

Runner up: Zoe Bennett

800m Winner: Jazmyn Hammond

Runner up: Jiselle Hammond

Interschool Athletics

Friday 14 September- Pingelly

Boys 8 yrs and under

Gold Medal – Declan Kilpatrick

Girls 8 yrs and under

Gold Medal – Stevie Grossmith

Boys 10 yrs and under

Gold Medal – Callum Overington

Silver Medal – Antwon Ugle

Bronze Medal – Jamison Ugle

Boys 12 years and under

Bronze Medal – Luke Gollan

Boys 15 years and over

Silver Medal – Jeremy Stevens

Congratulations to our medal winners.

Beverley came in third in both Secondary and Primary Shields.

Congratulations to all the students who represented Beverley.

Microscope Win

On Tuesday 19 August representatives from C.Y. O'Connor Institute, the Rotary Club of Northam and Cunderdin College of Agriculture presented a set of 30 hand-held microscopes to our school.

The Magnifying Microscopes program is an initiative of the Rotary Club, who have combined with STAWA (Science Teachers Association of WA) to provide them at no cost to suitable schools.

The microscopes are suitable for use by students of all ages, from pre-primary upwards, and, being hand-held, allow students to move around either a classroom or outdoors.

Students in years 7-10 also received an information session about careers in agriculture/agribusiness, as well as information about courses on offer at C.Y. O'Connor and Cunderdin College of Agriculture. They were then led by an agribusiness lecturer in using the microscopes on an activity about fibres. We are very appreciative of the opportunity to access these resources and look forward to using the microscopes in our science lessons.



Open Night

On the evening of Thursday 13 September the staff threw open the doors and invited the Beverley community to inspect the school facilities. This proved to be a marvellous opportunity to show case all the development at the school over the past three years.

Many positive comments were received from the more than 60 families present as were acknowledgements of resources parents were not aware existed in the school.

A focus was on the High School environment and with the Woodwork, Metalwork and Home Economics rooms open with work samples from the options courses on display a lot of visitors gained a renewed perspective of the school. A highlight was the display of recently purchased iPads which will be a focus of learning in the High School.

High school happenings

VET – Careers

1. Excursion to Skills West Expo – On Friday 10th August all students from Year 7-10 travelled to Perth to the Convention Centre.

The event was very popular with students from many schools attending. Students saw a wide range of jobs on show, were able to talk to employers and training institutes as well as see some trades in action.

The Hospitality food preparation section was very popular.

2. Workplace Learning – Every Friday our Year 9/10 students go out to work. Students work with the same employer for a period of time learning employment and workplace communication skills. An important aspect of WPL is the Log Book where students record skills learnt and tasks done.

Our current students and employers are :

Jessica HL – Hairdressing with Price attack in Armadale.

Tayla H – Retail with the Beverley Newsagency.

Jeremy S – Has worked with Lyn Kay Youth Club & Talbot Nursery.

Thank you to the local employers who continue to support this valuable program.

Year 7 – 10 Textiles

The Home Ec room sewing machines are buzzing with excitement on Tuesdays as students sew a fantastic range of models. Students have explored decorating techniques used with fabrics before making tie dye shopping bags, decorated cushions and patchwork items.



Independent Living

Independent living is an option class where students learn skills to be able to look after themselves and organise a house for when they leave home.

Every Wednesday afternoon students cover a theory task such as shopping skills (including on line), budgeting and planning a menu before completing food preparation. Students learn to use available resources to cook healthy meals.



Pasta Day – Matthew Schilling

On *lunedì* the 17th *settembre* the year 3/4 class made pasta with signora Minchin. First we got put into groups with four people in each group. I was with *Salvatore's nonna*, *Salvatore* and *Giulio*. Secondly we got the *ingredienti* and *uno* pasta machine each for *uno* group. Thirdly we got lots of flour, *due uova*, some *sale*, some olive oil and a little bit of *aqua*. Fourthly we mixed the dough with a fork then we put the pasta machine on *uno*. We put the dough through the pasta machine *cinque* times on *uno*. Then we put the pasta machine on *due* and put the dough through *uno* times on *due, tre, quattro* and *cinque*. Then we put the thin dough through the *fettucini* blade.



Signora McLean



Signora Cooke



Signora Dewson-Hill



Signora Vandenberg



Signora Frankiln



Signora Mellick



Signor Edwards

Term 4 School Calendar
Monday 15th October
School begins for Staff only
Tuesday 16th October
School begins for students.

Sera Minchin

For all your air conditioning needs
contact:-

Robert & Nathan Chamberlain

Avon Auto Air

Phone: 08 9647 2070

Mobile: 0428 472070

We are now accredited and
registered to install and commission **Split**
System Air conditioners.



NEED PRACTICAL TRADE ASSISTANCE?

Contact *Design-Man*

(Design and Manufacturing Services)

Solving a range of practical needs and problems.

Specialising in:

- ✓ Cabinet making
- ✓ Shop fitting and modifications
- ✓ Modular designs eg Work spaces
- ✓ General carpentry
- ✓ Installations and modifications
- ✓ Metal based fabrication
- ✓ Motorhome and Caravan fitouts
- ✓ Tiling
- ✓ Advice and training

Guy Slingerland

0403602335

Beverley Plasterboard

Walls and Ceilings

New homes and renovations.

Specialising in:

Decorative Cornice
Crown and Corbels
Arches
Ceiling Roses

Prompt quotes, efficient service.

Chris Elliott

0412 427 939

beverleyplasterboard@westnet.com.au



All the details of the Christmas Lights Competition will be posted in the November Blarney Edition.

Shearing Teams Available

Contact Steve

of

SF & LR WAINOHU

SHEARING CONTRACTORS

Phone: (08) 9887 0708

Mobile: 0428 174 331 or
0429 802 144

Fax: (08) 9887 0731

Email: lynohu50@msn.com

PO Box 42, Pingelly WA 6308

33 Park Street, Pingelly WA 6308



Beverley Men's Golf

Once again warm conditions greeted 12 players on Saturday 1st September who took part in the **Peter Wansbrough Trophy**. The Event is a Stableford event with a draw at the end of the day to find who your partner is. The day was also for the September Monthly Mug.

Gavin Sazanov won the Monthly Mug on a countback with a score of 39 points from Terry Winfield who also had 39 points.

As the match was a hidden partner event a draw was held to allot partners. After the draw was complete Gavin Sazanov and Fred Sing were declared the winner after another countback with a combined score of 69 points, from Terry Winfield and Les Annison.

There were also a number of novelties on the day with the winners being;

Longest Chip or Putt on 1	Chris Pepper
Best 2 nd Shot on 4	Darrell Hagan
Nearest to the Pin on 5	Fred Sing
Longest Chip or Putt on 6	Fred Sing
Best 3 rd Shot on 9	Wayde McLean
Best Third Shot on 11	Terry Winfield
Best 2 nd Shot on 12	Terry Winfield
Nearest to the Pin on 13	Wayde McLean
Longest Putt on 15	Terry Winfield
Nearest to the Pin on 18	John Islip

Thanks to **Peter Wansbrough** for sponsoring this event.

Friday 7th September saw 24 players play in the **2012 Open Teams Ambrose** event.

It was very pleasing to see past members in Peter Edwards, Glen Chester and Jason (Sparrow) Young back at the club enjoying themselves.

The Gross winners on the day were the team comprising of Peter Edwards, Ron Milligan and Peter Edwards who won on a countback from Wayde McLean, Bruce Kilpatrick and Stephen Gollan with a score of 67 (5 under).

The Nett winners were a team from York comprising of Tony Ashford, Peter Pemberton and Phil Bateman with a nett score of 58.00. The Runners-Up were Jason Young, Ben Murray and Glen Chester with a 58.17 nett score.

Novelties winners for the Ambrose Event were

Best Second Shot on 1	Tony Ashford
Longest Chip or Putt on 2	Ben Murray
Men' Long Drive on 3 (0 to 17)	Phil Bateman
Men's Long Drive on 3 (18 to 36)	Mark Bickley
Best Second Shot on 4	Mark Armstrong
Nearest to the Pin on 5	Mark Armstrong
Longest Chip or Putt on 6	Chris Pepper
Longest Putt on 7	Bruce Kilpatrick
Nearest to the Pin on 8	Jane Murray
Ladies Long Drive on 9 (0 to 21)	Jane Murray
Ladies Long Drive on 9 (22 to 45)	Gina Adams
Longest Chip or Putt on 10	Sera Minchin
Best Third Shot on 11	Bruce Kilpatrick
Best Second Shot on 12	Jason Young

Nearest to the Pin on 13	Ben Murray
Best Third Shot on 14	Jason Young
Longest Putt on 15	Mark Edwards
Best Second Shot on 16	Ron Milligan
Open Long Drive on 17	Phil Bateman
Nearest to the Pin on 18	Peter Edwards

Ideal golfing conditions greeted a field of 45 players on day one of the **2012 Open Teams Championships**.

The format of the event is you have three players in a team. You play 18 holes of stroke on Saturday and Sunday and your combined scores of your team over the two days are tallied to find the winning team.

At the end of day one everyone was very happy to be inside socialising and talking about what went wrong on the course during their rounds. A very nice roast chicken meal was had watching the AFL Semi Final game between Fremantle and Geelong.

Congratulations to Marg Peck who scored a "Hole in One" on the 5th.

Darrell Hagan shot the best nett score of the day with 66 points.

The best Gross score on the day was Tony Peck with 74 (2 over) from the Chequers Golf Club. Jason Young was the best placed Beverley player in the gross section with 83.

Novelties winners for Saturday were:

Best Second Shot on 1	Maxine Watts
Longest Chip or Putt on 2	Sera Minchin
Men' Long Drive on 3 (0 to 17)	Tony Peck
Men's Long Drive on 3 (18 to 36)	Mark Bickley
Best Second Shot on 4	Mark Bickley
Nearest to the Pin on 5	Margie Peck
Longest Chip or Putt on 6	Ben Moulton
Longest Putt on 7	Wayde McLean
Nearest to the Pin on 8	Toni Wright
Ladies Long Drive on 9 (0 to 21)	Marg Richings
Ladies Long Drive on 9 (22 to 45)	Toni Bennett
Longest Chip or Putt on 10	Yvonne Hobbs
Best Third Shot on 11	Stephen Gollan
Best Second Shot on 12	Stephen Gollan
Nearest to the Pin on 13	Jane Murray
Best Third Shot on 14	Paul Woolstencroft
Longest Putt on 15	Stephen Gollan
Best Second Shot on 16	Michael Griffiths
Open Long Drive on 17	Darrell Hagan
Nearest to the Pin on 18	Mark Armstrong

With conditions once again ideal, some very good scores were recorded Glen Chester shot a great nett score of 64. Mark Armstrong, Len Richards and Ben Moulton also had good rounds shooting 69 nett points.

In the Gross Tony Peck once again from Chequers had a good day being only 4 over to record a 76. Phil Bateman 77 and Ben Moulton 79 also had good rounds.

Once all the scores were tallied and checked the following winners for the event were announced.

Gross Winning Team Chequers 1 - Tony Peck, Paul Woolstencroft, Geoff Mouritzen - 431

Gross Runner Up Team Composite 1 - Michael Griffiths, Jason Young, Glen Chester - 508

Gross Third Team Chequers 2 - Len Richards, Gordon Riggir, Greg Scott - 524

Nett Winning Team Beverley 1 - Mark Bickley, Darrell Hagan, Ben Moulton - 419

Nett Runner up Team Serpentine 1 - Keith Gray, Gary Byles, Mel Vivian - 434

Nett Third Team Beverley 2 - Wayde McLean, Bruce Kilpatrick, Stephen Gollan - 445

Individual Gross Winner: Tony Peck - 150 (Chequers)

Individual Gross Runner Up: Phil Bateman - 157 (York)

Individual Nett Winner: Darrell Hagan - 137

Individual Nett Runner up: Mark Armstrong - 139

Saturday Gross Winner: Paul Woolstencroft

Saturday Nett Winner: Jason Young

Sunday Gross Winner: Ben Moulton

Sunday Nett Winner: Glen Chester

Best Vet (55 & over): Gary Byles (Serpentine)

Best Super Vet (65 & over): Len Richards (Chequers)

Novelties winners for Sunday were:

Best Second Shot on 1	Darrell Hagan
Longest Chip or Putt on 2	Ben Moulton
Men' Long Drive on 3 (0 to 17)	Mark Armstrong
Men's Long Drive on 3 (18 to 36)	Ron Milligan
Best Second Shot on 4	Mark Bickley
Nearest to the Pin on 5	Paul Woolstencroft
Longest Chip or Putt on 6	Gordon Riggir
Longest Putt on 7	Toni Wright
Nearest to the Pin on 8	Mark Edwards
Ladies Long Drive on 9 (0 to 21)	Marg Richings
Ladies Long Drive on 9 (22 to 45)	Marg Peck
Longest Chip or Putt on 10	Len Richards
Best Third Shot on 11	Mark Armstrong
Best Second Shot on 12	Michael Griffiths
Nearest to the Pin on 13	Marg Peck
Best Third Shot on 14	Stephen Gollan
Longest Putt on 15	Stephen Gollan
Best Second Shot on 16	Phil Bateman
Open Long Drive on 17	Phil Bateman
Nearest to the Pin on 18	Ben Moulton

The Club would like to thank the following sponsored and those people who helped in any way to make it a successful event.

Twinkarri, Contract Aquatic Services, Valley Ford Northam, Beverley IGA, Purslowe Tinetti Funerals, WFI, ANZ Bank, Fly's R Gone, Fred Sing, Judy Moylan, Terry and Sandy Woods, Passive Energy Systems, Dirt N Boondies, Brendon Grylls.

In fine conditions on Saturday 15th September the **Beverley Electrical Services** trophy was played for.

8 players participated in this Stableford event, in which Ron Bickley scored a terrific 40 points to win the day. Mel Vivian also had a good day with 37 points to finish second.

Novelties on the day were won by:

Best 2 nd Shot on 1	John Islip
Nearest to the Pin on 5	Terry Winfield

Best Second Shot on 7	Mark Armstrong
Best Third Shot on 9	Gavin Sazanov
Best Second Shot on 10	Les Annison
Longest Chip or Putt on 12	John Islip
Nearest to the Pin on 13	Fred Sing
Nearest to the Pin on 18	Mel Vivian

Thanks to **Karl Smith** and **Beverley Electrical Services** for putting the day on.

One of the biggest golfing events on the Beverley's golfing calendar was held on Saturday 22nd September, being the **President vs. Captain Day** sponsored by **Cedric Smith** and **Bert Wansbrough** unfortunately the President was unable to play the day, but handed over the control of the team to the Vice President Terry Winfield.

Prior to hit off teams were selected.

The President's team consisted of Terry Winfield, Chris Pepper, John Islip and Mel Vivian.

The Captain's team was Mark Bickley, Gavin Sazanov, Mark Armstrong and Darrell Hagan.

John Donovan and Darrell Hagan had a day out and shot a tremendous nett score of 66 to tie for first place a countback was then held and John Donovan was declared the winner. Chris Pepper also played well to finish with 69 nett points. Terry Winfield had the best gross score with 80.

Even though we were all happy to see John, Darrell and Chris have such a good score today was not about your individual score it was about the team. With the Captain (John Donovan) under extreme scrutiny, he produced the goods to reverse last year's results, to see the President's Team victorious with 300 nett points and the Captain's Team with 302 nett points.

Novelties on the day were won by:

Nearest to the Pin on 5	Chris Pepper
Nearest to the Pin on 13	Mel Vivian
Longest Chip or Putt on 16	Mark Bickley

Thanks are extended to **Cedric Smith** and **Bert Wansbrough** for sponsoring the day.

The **Beverley Lions Club** conducted a 3 Person Ambrose Event on Sunday 23rd September with only a small field of 16 playing.

Nett Winners on the day were Mark Bickley, Gavin Sazanov and Mel Vivian with a score of 62.34. Gross Winners were Fred Sing, Mark Armstrong and Graham Lewis with a one over 73.

Thanks goes to the **Beverley Lions Club** for hosting the day and the club looks forward to making it a bigger day next season.

**Don't forget
BEVERLEY POLICE GOLF DAY
Saturday 6 October.**



**Anglican Parish Beverley/Brookton
Times for services for October 2012**

DAY	DATE	CHURCH LOCATION	TIME AM	PM	SERVICE
Sunday	07 October	St. Mark's Brookton	8.30am		Holy Communion
Sunday	07 October	St. Mary's Beverley	10.30am		Holy Communion
Sunday	07 October	St. John in the Wilderness, the Dale	10.30am		Prayer, Praise & Proclamation
Sunday	14 October	St. Mary's Beverley	10.30am		Prayer, Praise & Proclamation
Sunday	14 October	St. Mark's Brookton	10.30am		Morning Prayer
Sunday	21 October	St Mark's Brookton	8.30am		Holy Communion
Sunday	21 October	St. Mary's Beverley	10.30am		Holy Communion
Sunday	28 October	St. Mary's Beverley	10.30am		Prayer, Praise & Proclamation
Sunday	28 October	St. Mark's Brookton	10.30am		Morning Prayer
Sunday	4 November	St. Mark's Brookton	8.30am		Holy Communion
Sunday	4 November	St. John in the Wilderness, the Dale	10.30am		Holy Communion



CATHOLIC CHURCH

Service in Beverley
8:00 am every Sunday at

**THE RELIGIOUS
SOCIETY OF FRIENDS
(QUAKERS)**

Beverley Friends Meeting
Old Catholic School Rooms
Dempster Street

**Sunday 10:30am - Meeting for
Worship**



Parish Information
Parish telephone is: 9646 1112
Correspondence to: PO Box 292, Beverley
All Mail for St Mary's Society,
please address to: **PO Box 292, Beverley**



For more information & enquiries
phone 9646 0575.



**CHURCH
OF
CHRIST**

The Church of Christ meets for services at the C.W.A. Hall every Sunday at 10:30am. Enquiries to Sylvia Seddon-Secretary 9646 1072.



**BEVERLEY HOME
CHURCH**

Beverley Home Church
Meets on the 1st and 3rd
Saturday of each month.

We welcome all to share in Christ
centred fellowship
With Terry and Glenda.

At 4.00 pm closing with a
fellowship meal

At 16 Barnsley street, Beverley
Enquiries ph 96460546



**The Church of
United Spiritualism of Australia**

Schedule of Services for 2012

Healing at 2.30 pm and the Service commences 3.00 pm

**Feb 12
Mar 11
Apr 8
May 13**

**Jun 10
July 8
Aug 19
Sept 9**

**Oct 14
Nov 11
Dec 9**

Please contact Rev Irene on 9646 0470 for details of venue as this may vary.

**BEVERLEY HOSPITAL AUXILIARY
OP SHOP**

Donated, clean clothing is very much appreciated. No electrical appliances, underwear or bathers accepted. Donated items may be left at Avon Trading please.

The Op Shop is open every Friday between 2:00pm and 4:00pm.

**OP SHOP ROSTER FOR
October 2012**

- Fri 05** Val Edwards, Gina Adams, Rhonda Minchin
 - Fri 12** Amanda McLean, Bette Bremner, Marilyn Windsor
 - Fri 19** Val Moad, Glenys Lane, Frances Neale
 - Fri 26** Vicki Glassby, Lee Storer Sue Eramiha.
- Val Moad
Hon. Secretary

**MEALS ON WHEELS
ROSTER FOR
October 2012**

- Oct 01 **Public Holiday**
- Oct 02 J. Islip / T. Valli
- Oct 03 D. Strange / E. Boyle
- Oct 04 J. Howell / B. Wauchope
- Oct 05 L. Willington / J. Brown (ND)

- Oct 08 D. Ford / P. Smith
- Oct 09 R. McCallum / W. Gilbert
- Oct 10 J. Van Tiel / S. Eramiah
- Oct 11 D. Kilpatrick (ND) / R. Gowrie
- Oct 12 D & E White

- Oct 15 B. Foster / S. McEwan (ND)
- Oct 16 B. Sims / D. Ormorod
- Oct 17 C & B Cable
- Oct 18 A & K Boyle
- Oct 19 L. Willington / J. Howell

- Oct 22 Trevor & Sue Ward
- Oct 23 J. Van Tiel / B. Wauchope
- Oct 24 D. Starnge / E. Boyle
- Oct 25 J. Brown (ND) / K. Badger
- Oct 26 A. Elston / G. Roache

- Oct 29 D. Kilpatrick (ND) / B. Foster
- Oct 30 S. McEwan (ND) / D. Ford
- Oct 31 P. Smith / S. Eramiah
- Nov 01 A & K Boyle
- Nov 02 D & E White

If you would like to assist with this much needed community service, Please contact Dorothy on 9646 3213

BEVERLEY CHILD HEALTH CLINIC

Clinic appointments can be made by ringing the hospital on 9646 3200.



The clinic is open on
Mondays for appointments and
immunisations from 9 am to 4 pm.



Amy Lee — Child Health Nurse.

BEVERLEY DIABETES SUPPORT GROUP

Meets at the O.T. Room, Beverley Hospital
WHEN: 2.00pm till 4.00pm ON MONDAY 8th OCTOBER
Contact Leonie Hill on 9646 4149

Type one and two diabetics of all ages are encouraged to attend as well as other members of the public interested or suffering from diabetes.
Please park on the road or behind the St John Ambulance Centre.
Note: Michele Williams from Shiatsu Health will be attending to give us a talk on health issues and how to improve your lifestyle with the aide of Shiatsu & oriental therapies.

AVON VALLEY WINDSCREENS

A preferred windscreen repairer

**Cars, Trucks & Tractors
Replacements & Chips**

Kale & Ron Robinson

0429 001 393

32 Georgiana St, York 6302

We come to you!



WD & LM SLEEP

Kokeby Concrete

Specialising in

Concrete, Sand pads, Bob Cat Hire, Site and Block
Cleanup (can organise grano workers)



P: 08 9646 4163 M: 0429 461 314



BEVERLEY LAWN TENNIS CLUB

Welcome to the 2012/2013 Tennis season! I hope everyone is 'fighting fit' and ready for a great season of tennis!

The club had a great season last year, with our major fundraiser, the Easter tournament, a great success once again - thanks to the efforts of many. In addition, the club performed major works with the structural reinforcement of the veranda and a wonderful painting job to the clubhouse thanks to Lyndon Grover.

Welcome to our new committee who are already planning the new season with great energy and enthusiasm.

The season will commence with a Chicken and Champagne lunch on Sunday 14th October at 12pm. Social tennis will follow lunch and the committee is looking forward to seeing past, present and future members come and enjoy the day.

There will be a Busy Bee on Saturday 13th October at 8.30am for anyone who is able to lend a hand for a few hours.

Our Junior Coordinator, Mandy McLean has organised after school Junior Coaching with professional coach, Keith O'Brien, starting on Tuesday 15th October and will run for 6 weeks.

Ladies Tennis will commence on Wednesday 16th October. We are again running a 6 week fixtured competition (run over 8 weeks allowing byes for Ladies Open Days) after last year's success. Please contact Aliesha Murray on 96460 264 or 0417978073 for further details.

Brett Shaw and Charmaine Willing will coordinate Pennants for this season, which has seen a major change with it being played over six weeks starting on 13th October. The change was made to enable towns to field a side each week and free up the season for other competitions within the district. I hope people embrace this concept and make the change worthwhile.

I would like to thank Richard Boladeras for accepting the role of Patron at the club. Richard has been a part of the club for many years, he and his family sponsor the Chris Boladeras Day each year and he does a power of work around the club. Thank you Bola!

Finally I would like to say a special thank you to our ever trusty team of Rob and Bob. Your work outside of the tennis season has not gone unnoticed and is very much appreciated by the committee and club members.

Ben Murray
President

If you would like to join our email list
secretary@beverleytennisclub.com



**2012/2013
Season Opening Day**



**Sunday 14th of October
@ 12 pm**

Come and join us for
Chicken and Champagne,
followed by tennis.

Everyone welcome

Members please bring a salad to share.

Adults \$5 , children \$2
Please RSVP *Ashe Murray*
lcaemurray@bigpond.com or
9641 6146.

BUSY BEE

8:30am

Saturday 13th October
All help appreciated

**NEW PLAYERS
WELCOME**



Never played before? Not a
problem! Please come and join
us on a Sunday afternoon.
Our family friendly club en-
courages new players to come
and 'have-a-go'.

You never know until you try!



BEVERLEY LADIES TENNIS

Well ladies it's time to start thinking tennis again!!!
Ladies tennis is starting in October
(Term 4, Week 1).

This is a social tennis morning out for all ages, with or without your children/babies. We encourage players of all ability levels to put your name down to play. We run fixtured rounds of tennis every Wednesday morning, so if you would like to play your name must be in ASAP so we can allocate you a position in a team. If you would like to be a 'fill-in player' that's great too, please let us know and we'll put you on the list.

When: Wednesday morning

Time: 9.00am – 11.30am

Dates: 17th Oct – 5th December

Where: Beverley Lawn Tennis Club

Contact: Aliesha Murray alieshamurray@bigpond.com or 0417 978 073

AVON DRILLING SERVICE

Mick Lewis
Ph: 9572 7828
Mob: 0427 814 055

Brenton Legg
Mob: 0404 708 979

**WATER BORES
BORE DEVELOPMENT
MINI EXCAVATOR HIRE
POST HOLE DRILLING**



DALE RIVER TENNIS CLUB. OPEN DAY

Saturday 20th October 2012 at 4pm.

Tennis and Social Sausage Sizzle.

Cost \$5 per head.

Come along and have a go at tennis

A free day, no ball fees.

Enjoy an afternoon of fun and socialising.

Looking forward to seeing not only the regulars but recent arrivals to the district. A great opportunity to meet and greet.

Enquiries Brian Bishop or Keeta Dorman on 9647 1055

ChemDry®
Drier. Cleaner. Healthier.™
Beta Finish



Superior carpet
& upholstery
cleaning

Freecall 1800 017087
bettafinish@wn.com.au
Fax 08 96225473

WILLS AND ENDURING POWERS OF ATTORNEY

A friendly service for York, Beverley and
Quairading.

John will come to your house or farm.

JOHN MULLER LLB
SOLICITOR

0419 899 779

Email: mullja@bigpond.com

Beverley Netball Club Inc.

The season is now officially over. The Grand Final was played at the Beverley Town Courts on 22nd September between Pingelly Pink Ladies and Pingelly Blue Lagoons with the Pingelly Pink Ladies the victors 37 to 25. Sheree Blechynden from Pingelly Pink Ladies took out the CM Overington trophy for Fairest and Best in the Grand Final.

The Avon Fairest & Best for 2012 was Alex Ferns from Pingelly Gold Diggers with Leigh Jennings from Pingelly Blue Lagoons the runner up.

Friday 21st September there was a comic show at the town hall with the profits going to the Beverley Netball Club. Due to lack of numbers it was not a huge success that it could have been, but the people that did attend had a good night out and it was good to see such a variety of people get together.

The Beverley Netball Club held their windup on Sunday 23rd September and we had a mixture of costumes between the Beverley Hunter School Girls and the Beverley Spinners Australian Icons with special mention to Karmen and her vegemite outfit.

The Office Bearers for 2013 are:

President: Nat Ashworth
 V/President: Amor Moulton
 Secretary: Jo Copping
 Treasurer: Jen Petchell
 Recorder: Lorretta Adams

The season awards were presented and the winners are:

Overall Fairest and Best: Jodie Bell
 Donated by Beverley Hydra Boom: Beverley Hunters

Overall Fairest and Best r/up: Sarah Owens
 Donated by TM Hair design & Beverley Pharmacy: Beverley Hunters

Beverley Spinners Fairest and Best: Tess Hawke
 Donated by Hotel Beverley

Beverley Spinners Most Consistent: Tess Hawke and Zoe Wilkinson
 Donated by IGA

Beverley Hunters Fairest and Best: Jodie Bell
 Donated by Willey's Trading Post

Beverley Hunters Most Consistent: Kelly Jenkin
 Donated by Hotel Beverley

Best Club Person: Jo Copping
 As voted by the members

Avon Association 2012

Competition Ladder

TEAM	Played	Won	Lost	Drawn	Fft	Opp Fft	Byes	For	Agst	Diff.	%	Pts
Pingelly Blue Lagoons	18	14	3	0	0	1	0	668	360	308	185.56%	30
Pingelly Pink Ladies	18	13	3	0	0	2	0	821	487	334	168.58%	30
Pingelly Red Backs	18	14	4	0	0	0	0	817	541	276	151.02%	28
Pingelly Gold Diggers	18	10	6	0	0	2	0	781	531	250	147.08%	24
Pingelly Green Machines	18	11	6	0	0	1	0	684	480	204	142.50%	24
Beverley Hunters	18	10	8	0	0	0	0	748	541	207	138.26%	20
Brookton Sparks	18	5	12	0	1	0	0	331	686	-355	48.25%	10
Brookton Blazes	18	4	12	0	2	0	0	426	726	-300	58.68%	8
Beverley Spinners	18	1	15	1	0	1	0	296	749	-453	39.52%	5
Brookton Glory	18	0	13	1	4	0	0	193	664	-471	29.07%	1



BEVERLEY REDBACKS HOCKEY CLUB

THE BAD NEWS The sad part about this October Blarney is reporting that the Beverley 'Redbacks' Ladies Hockey Club did **NOT** take home the Premiership for 2012. In one crushing moment the Fitzies Fillies girls stole our thunder with a 'Golden Goal' in extra time to win the Grand Final 2 goals to 1. Out of 14 games played this season we only lost 2, interestingly, our first and last games played.

THE GOOD NEWS Losing is disappointing (to say the VERY least) but the overall Grand Final Experience was bitter sweet. We lost, however due to the strength of community spirit in this little town we, as a team, felt so privileged to have attracted such a HUGE crowd to our last game. When Lisa Mourach scored, late in the second half to equalise, there came a roar from that sea of Red and Black that was completely exhilarating and something I will never forget!

HEARTFELT THANKS GO TO EACH OF YOU BEVERLEY PEOPLE THAT MADE IT TO THE GRAND FINAL AND ALL OUR HOME AND AWAY GAMES IN 2012

including all the ' Household Names'.

MORE GOOD NEWS There is not a Club (sporting or otherwise) in Beverley that could get by without the support of Sponsors and the Beverley 'Redbacks' Ladies Hockey Club is no exception. Anyone who actually lives 'and gives' in Beverley will know the following businesses:

**Beverley Pharmacy • Hotel Beverley • Inkosi Design • Beverley IGA
Blechys Tyres • Trevor & Mandy McLean • Beverley Electrical
Beverley Transport • Avon Trading • Terry and Sandy Woods
Farm Direct Stockfeeds • Northam Sportspower • Healthways**

THANKYOU TO OUR GENEROUS SPONSORS FOR YOUR SUPPORT IN 2012

EVEN MORE GOOD NEWS Chris Mann came into our hockey lives this year as our new Coach and she has breathed new life into this team. She has made training not just a learning experience but the most fun you can have outside of a Pre Primary classroom! Her thoughtfulness, enthusiasm and organisation has meant that we could concentrate on our skills and our fitness coz the rest was taken care of.

THANKYOU CHRIS – IT'S BEEN A FANTASTIC YEAR WITH YOU AT THE HELM

WHAT? THERE'S EVEN MORE GOOD NEWS? I think Chris would agree that a Coach needs a team and what a team!

Elyse Alexander • Catherine Britza • Mary Brogan • Penny Burns
Tori Jamieson • Ali Lewis • Katie Lindley • Kathryn McLean
Chantelle Meade • Emily Miller • Lisa Mourach • Marg Mourach
Kelly Piper • Fleta Redding • Carissa Shaw • Hollie Smith
Megan Vandenberg

THANKYOU TO OUR WHOLE TEAM - COZ WE'RE ALL AWESOME!

2012 THE YEAR THAT WAS - 'HOME AND AWAY' & 'FINALS' STATS

GAMES - 14 Played (7 Byes) 11 Wins, 1 Draw, 2 Losses **GOALS** – 33 For • 9 Against

SCORERS - Chantelle Meade 7 • Kelly Piper 5 • Carissa Shaw 4 • Lisa Mourach 4

Emily Miller 2 • Mary Brogan 2 • Hollie Smith 2 • Katie Lindley 2

Tori Jamieson 2 • Catherine Britza 2 • Kathryn McLean 1

AWARDS - Fairest and Best – Kelly Piper

R/U Fairest and Best – Lisa Mourach

Most Consistent – Kathryn McLean

Most Improved – Megan Vandenberg

Coaches Award – Fleta Redding

Avon Hockey Assoc B Grade Fairest and Best – Kelly Piper

Go for 2&5[®]
FRUIT VEG


healthway

beyond gardens

presents



Join Steve McCabe, John McWilliams and Peter Coppin from the Beyond Gardens Team



Golden Pipeline Roadshow GardenWise Seminar

Tuesday 13th November
6pm-9pm
Beverley Town Hall
Vincent Street
Beverley

Ideal for all gardeners

- Understanding and improving your local soil
- Waterwise and fertiliserwise tips and tricks
- Principles of design
- Growing food at home (including bushfoods)
- Waterwise irrigation
- Gardening myths
- Questions and Answers
-and much more....

Always fun and informative, these seminars dispel popular myths and replace them with a host of practical tips that increase the WOW factor. Light refreshments at half time ...and it is all FREE!

Proudly sponsored by:



Department of Regional Development and Lands



ROYALTIES FOR REGIONS



Please tell everyone - informative, fun, free and we even feed you!

The Beyond Gardens Team will also be visiting:

Northam 12th November 5.30pm-8.30pm
Quairading 13th November 10am-1pm
Kondinin 14th November 10am-1pm
(special fundraiser for the Kondinin Hospital)
see www.beyondgardens.com.au for details.

For more information or to register contact:
Beverley Community Resource Centre Ph: 9646 1600

Please make sure you register to attend to help us with catering for this event.

...and it's FREE!

We still guarantee no sales pitches just free, practical advice

or book online at www.beyondgardens.com.au
or phone our 24hr telephone hotline on 1300 369 833

For more information visit www.beyondgardens.com.au



Travelling Overseas or around Australia?
To book a holiday of a lifetime
Contact your local travel professional

Catherine Riches

Tel: (61)8 9647-2173 Email: broker3@bigpond.com
Travel Associates Australia Pty Ltd - Licence Nbr:9TA1188



TURN AN OLD BOTTLE INTO A SIMPLE LITTLE CORD HOLDER

BEVERLEY BOWLING CLUB

Official Opening Day

SUNDAY 07 OCTOBER

Mixed Social Bowls

Names to be in at 1.00pm
For a 1.30pm start

Come down and try out the
Fantastic new greens.

Please bring a plate of
savoury food to share.

See you on the green



2013 CALENDARS FOR SALE

\$20 (plus postage)

For more information or enquiries please phone
The Countryman on 9482 3305
or purchase online at

<https://www.thewestshop.com.au/countryman/charitycalendar/>

All profits from sale of calendar go to:



...If you see one of our RMH utes or blokes around purchase a copy from them...



CONTROL LICE AND WORMS IN ONE APPLICATION



- New Active for Lice Control
- Off-Shears Backliner
- Controls LICE and WORMS in SHEEP

Coopers MAVERICK

See your preferred Coopers Reseller or call PAUL BLOOM on
0408-211-978 for more information

DIAMOND

THE NEIL DIAMOND TRIBUTE

www.neildiamondtribute.com.au

ONLINE BOOKINGS

www.trybooking.com/BUKX

OR Tickets from
Beverly Newsagency



Special Guest
WAYNE PRIDE



the **DIAMOND BAND**
'A BEAUTIFUL NOISE'

TICKETS
\$40.00

SATURDAY at **24th November**

BEVERLEY PLATFORM THEATRE

Cnr Railway Line & Vincent St, BEVERLEY

Gates open 6.00pm

Entertainment from 7.30pm

Licensed Bar, Coffee Pizzas & Snacks

Outdoor Event

CONTACT

Jenny Broun 0419040063

beverleystationarts@gmail.com

Wild Women of the West Seminar



Stop and Smell the Roses

It is a juggle, that thing called 'Life' and we as women feel that we can do everything, achieve everything and be everything to those within our lives. The pressure of being everything to everyone can overwhelm even the most strongest of women. There has to be days when we just 'Stop to Smell the Roses' and feel no guilt for doing something for ourselves. There needs to be **balance**.

This year's Wild Women of the West Seminar is all about learning to find that stillness and peace that we require to be better sister's, wives, mum's, bosses, daughter's and women. Taking time to enrich yourself benefits more than just you, it also benefits all that surrounds you.

Hear life stories from women who have struggled, achieved and survived to get them to where they are today. Keynote speakers for the day include **Jenny Morris** - Dual Olympic Gold Medallist and former captain of the Hockeyroos and **Karen Tighe** - ABC Sports Presenter. We also have Amanda Harding from Find Cancer Early and Bob Melville from Melville Rose Nursery. Fleur McDonald—Author has penned a special article for our event with a very special surprise not to be missed. Event Highlights: Major Door Prize Giveaway, Shopping Stalls, Raffles and lots more.....



Date: Monday 5 November 2012

Time: 9.00am - 3.00pm

Venue: Beverley Town Hall

Tickets cost \$40 per person

Fully Catered Event

Tickets on sale Tuesday 2nd October 2012 from

Beverley Community Resource Centre

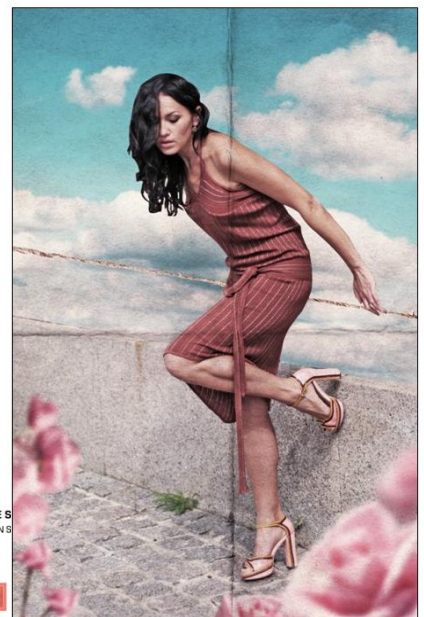
Ph: 9646 1600 or E: beverley@crc.net.au

*****Event not suitable for children*****

 **Beverley
Community Resource Centre**
Your local connection



**Department of
Regional Development and Lands**





7:30pm, Friday 26th October

**Beverley Football Club
Annual General Meeting
at the Hotel Beverley.**



**The Beverley Football Club are the 2012 AFA League
and Netball Premiers!!**

The Beverley Football Club has conquered all before them, with twelve consecutive victories, including the ultimate prize of the AFA League Grand Final and complete a very successful 2012 Season.

On Sunday 16th September, in extremely warm conditions at Jubilee Oval in Northam, and similarly to the 2nd Semi Final, it was Beverley who finished stronger over Kellerberrin/Tammin kicking three goals to nothing in the final quarter to record a 15 point victory and claim our ninth League Premiership.

Earlier in the day spectators witnessed a thrilling Netball Grand Final between the favourites Federals and the underdogs Beverley. It was a tight tussle all game with the margin not exceeding more than five goals for either side. Beverley got on top in the final quarter and with Narelle Bailey deadly accurate in front of goal, we were able to pull off a miraculous upset and claim our first Netball Premiership.

As expected the celebrations went on well into the night back in Beverley and continued on for the traditional "mad Monday" antics.

We thank all our members, sponsors, supporters and past players who turned out in such great numbers to support the efforts of our players on Grand Final day, it means a lot to the players and makes the occasion so much more memorable. We also thank and congratulate all the players on their fantastic achievement, not just on Sunday, but throughout the whole season. We all know how much hard work we have to do to reach a Grand Final, and that's what makes a premiership so rewarding.

Well done to the Beverley Ladies Hockey Club on reaching the B Grade Hockey Grand Final played in York on Saturday 22nd September. After a very even contest the score was one all at full time, meaning the game continued into extra time with "Golden Goal". Unfortunately it wasn't to be for our girls with Fitzies securing the victory in extra time.

The Beverley Football Club extends our deepest sympathy to the Willey family on the recent sad passing of John (Hammer) Willey. Hammer was a past player and keen supporter of the Beverley Football Club and our players wore black armbands as a mark of respect in the 2012 AFA League Grand Final.

On Saturday 22nd September we held our Presentation Night, and we sincerely thank the Beverley Golf Club for hosting this function and their warm hospitality throughout the evening.

Congratulations to the following players on their outstanding individual achievements in Season 2012:

LEAGUE

Beverley Football Club Fairest & Best (Springdell Medal) – Justin Mann, 104 votes from 14 games

Beverley Football Club Runner-up Fairest & Best, *donated by Mark & Glenys Petchell* – James Turner, 85 votes from 14 games

Beverley Football Club Most Improved Player – Stuart Murray
Beverley Football Club Most Courageous Player, *donated by Rick & Lorna Barrett-Lennard* – Matthew McLean

Beverley Football Club 'Warky' Ugle Memorial Leading Goalkicker – Joel O'Halloran, 56 goals from 11 games

Beverley Football Club "Player of the Finals", *donated by David & Gina Adams* – Brett Speldewinde

AFA Runner-up Fairest & Best – Scott Tomlinson (Beverley Football Club)

AFA RadioWest Baxters Rural "Player of the Year" – James Turner (Beverley Football Club)

AFA Grand Final Best on Ground (Ken Baxter Medal) – Scott Minchin (Beverley Football Club)

AFA Grand Final RadioWest "Player of the Day" – James Turner (Beverley Football Club)

RESERVES

Beverley Football Club Fairest & Best (R.A. McLean & Co Trophy) – Darrell Hagan, 111 votes from 8 games

Beverley Football Club Runner-up Fairest & Best (B.M. Minchin & Sons Trophy) – Damien Murray, 47 votes from 11 games

Beverley Football Club Best 1st Year Player, *Sponsored by Beverley Bed & Breakfast* – Damien Lamb

Beverley Football Club Coach's Award – Mark Britza

AFA 3rd Fairest & Best – Darrell Hagan (Beverley Football Club)

NETBALL

Beverley Redbacks Most Consistent – Rebecca Altus, 58 votes

Beverley Redbacks Runner-up Most Consistent – Jacinta Murray, 51 votes

Beverley Redbacks Most Improved – Catherine Britza

AFA Equal Fairest & Best – Rebecca Altus (Beverley Redbacks)

AFA Netball Grand Final Most Valuable Player – Narelle Bailey (Beverley Redbacks)

HOCKEY

Beverley Ladies Hockey Club Fairest & Best – Kelly Piper

Beverley Ladies Hockey Club Runner-up Fairest & Best – Lisa Mourach

Beverley Ladies Hockey Club Most Consistent – Kathryn McLean

Beverley Ladies Hockey Club Most Improved – Megan Vandenberg

Beverley Ladies Hockey Club Coach's Award – Fleeta Redding

Avon Hockey Association B Grade Fairest & Best – Kelly Piper (Beverley Ladies Hockey Club)

Avon Hockey Association Round 14 (25th August 2012) –

Beverley vs. Fitzies at Beverley

Beverley 3

Fitzies 3

Margin: draw

Goals: Beverley-Mary Brogan 1; Tori Jamieson 1; Chantelle Meade 1.

Best:Beverley-Marg Mourach and Ali Lewis.

Avon Hockey Association Round 15 (1st September 2012) –

Aces Blue vs. Beverley at Northam

Beverley	1
Aces Blue	0

Margin:1 goal

Goals: Beverley- Chantelle Meade 1.

Best: Beverley-Chantelle Meade and Megan Vandenberg.

AFA 2nd Semi Final (2nd September 2012)

hosted by Beverley

<u>LEAGUE</u>	1 st	2 nd	3 rd	4 th	Points
Beverley	5.2	8.3	12.4	17.7	109
Kellerberrin/Tammin	5.1	9.3	12.7	13.9	87

Margin:22 points

Goals: Beverley-Dale Wansbrough 5; Kyle McLaughlin 2; Scott Tomlinson 2; Joel O’Halloran 2; Matt Malpass 1; Brett Speldewinde 1; Will Schorer 1; Tim Radcliffe 1; James Adams 1; Robbie Wansbrough 1.

Best: Beverley -Brett Speldewinde, Owen Heasman, Dale Wansbrough, Robbie Wansbrough, Paul Grover, Stuart Murray, Matt Davey and Matt Malpass.

NETBALL

Federals	66
Beverley	42

Margin:24 goals

Best: Beverley-Jacinta Murray and Narelle Bailey

Avon Hockey Association 2nd Semi Final (8th Sept 2012) –

Beverley vs. Fitzies at Northam

Beverley	2
Fitzies	0

Margin:2 goals

Goals: Beverley-Chantelle Meade 1; Lisa Mourach 1.

Best: Beverley-Tori Jamieson and Lisa Mourach.

AFA Preliminary Final (9th September 2012)

hosted by Kellerberrin/Tammin at Tammin

NETBALL

Beverley	52
Railways	29

Margin: 23 goals

Best: Beverley-Bec Altus and Gemma Ridgway

AFA Grand Final (16th September 2012)

hosted by Railways at Northam

<u>LEAGUE</u>	1 st	2 nd	3 rd	4 th	Points
Beverley	3.5	9.7	10.9	13.14	92
Kellerberrin/Tammin	5.6	7.9	10.15	10.17	77

Margin:15 points

Goals: Beverley-James Turner 5; Joel O’Halloran 2; Tim Radcliffe 2; Brett Speldewinde 1; Andrew Cullen 1; Dale Wansbrough 1; Kyle McLaughlin 1.

Best: Beverley-Scott Minchin, James Turner, Justin Mann, Joel O’Halloran, Owen Heasman, Matt McLean and Scott Tomlinson.**Ken Baxter Best on Ground Award – Scott**

Minchin (Beverley)

NETBALL

Beverley	48
Federals	43

Margin:5 goals

Best: Beverley-team effort

Most Valuable Player – Narelle Bailey (Beverley)

Avon Hockey Association Grand Final (22nd September 2012) –

Beverley vs. Fitzies at York

Fitzies	1
Beverley	1

Fitzies won with a Golden goal in extra time.

Margin:1 goal

Goals: Beverley-Lisa Mourach 1.

Congratulations to:

- Grant Kampen & Sarah Abraham, on the birth of their second baby daughter Imogen on Monday 27th August; Scott Tomlinson, who was awarded the RadioWest “Goal of the Day” in the League 2nd Semi Final against Kellerberrin/Tammin on Sunday 2nd September;
- Tim Radcliffe, who was awarded the RadioWest “Mark of the Day” in the League 2nd Semi Final against Kellerberrin/Tammin on Sunday 2nd September;
- Dale Wansbrough, who was awarded the RadioWest “Player of the Day” in the League 2nd Semi Final against Kellerberrin/Tammin on Sunday 2nd September;
- Daniel Lea & Kira-Leigh Witherington, on the birth of their baby boy Joseph Michael on Saturday 8th September;
- David & Mel Capper, on the birth of their baby boy Matthew John on Saturday 8th September;
- Chris Mann, who celebrated her 60th birthday on Sunday 16th September; and
- James Turner, who was awarded the RadioWest “Player of the Day” in the League Grand Final against Kellerberrin/Tammin on Sunday 16th September.

Best wishes to:

- Blake Wansbrough for a speedy recovery, after he sustained a fractured wrist in the League game against York on Sunday 19th August;
- Kira Strange, for a speedy recovery, after she sustained a fractured wrist in the Netball 2nd Semi Final against Federals on Sunday 2nd September; and
- Jacinta Murray, for a speedy recovery, after she sustained a serious knee injury in the Preliminary Final against Railways on Sunday 9th September.

Thanks to:

The countless number of volunteers who helped with all the match day duties, including canteen, bar, gate and on-field on a hectic but rewarding 2nd Semi Final day on Sunday 2nd September.

Coming up:

- 7:30pm, Friday 26th October – Beverley Football Club: Annual General Meeting at the Hotel Beverley.
- The Beverley Football Club calls for expressions of interest for the position of Club Secretary for the 2012/13 season.
Please contact President Steven Minchin on 9641 6060.

A reminder to all players, members, sponsors and supporters that you can now view all the latest news and events from the Beverley Redbacks by checking out our website at www.beverleyfc.com.au and don’t forget to Like us on facebook!

To keep you informed and up to date on all the latest news and events from the Beverley Football Club, simply register your email address with us at beverleyfc@bigpond.com and we’ll add you to our mailing list.

See you at the footy!!!

Country Line Dancing

Beverley Town Hall

**Thursdays 9.30am to
12.00pm**

Enjoyable exercise!

**Enquires:
Jan 9646 4041 or
Jill 9646 0283**

BLARNEY NOTICES

Email notices for the
Beverley Blarney
should be sent to the
Shire of Beverley at:



blarney@beverley.wa.gov.au

BEVERLEY BLARNEY DEADLINE DATES FOR 2012/2013

NOV 2012 Tuesday 23 October

DEC 2012 Friday 23 November

JAN 2013 Wednesday 19 Dec

FEB 2013 Tuesday 22 January

MAR 2013 Wednesday 20 Feb

APR 2013 Friday 22 March

MAY 2013 Tuesday 23 April



**BEVERLEY
BLARNEY**



Beverley Horse & Pony Club



Our September rally was a busy day for members. The morning saw visiting coaches Marika Barrett-Lennard and Jen Hammond keeping the riders busy in the saddle while Tess managed the leadrein riders. Past member Wayne Sleep came along to do a lesson on knots with our older riders. They were all very interested in learning how to make a rope halter, which is very handy when you come across an escapee. Members then spent the afternoon preparing the grounds ready for the following weekend.

The Championships was a very success weekend. Our members were kept busy keeping all the visitors fed over the weekend with catering starting Friday night through to Sunday afternoon. It is always exciting to see our grounds full of floats, horses and campsites. This has been a major fundraiser for our club for several years and it is unfortunate that due to the Pony Club Nationals being hosted by WA next year and other factors we won't be able to host it.

A huge well done to Tealah & Paddy who were part of the Avon Zone Novelties team at the championships representing the zone in 5 novelties. She was part of the Ball & Cone team which placed 6th and the Bushman's Barrel Team that placed 5th in the 12yrs and under age group. This age group is quite large and competition is of a very high standard for such young riders. I know Tealah had a great time over the weekend and looked quite worn out by Sunday afternoon.

Our hardworking parents spent the week after the championships busily cooking up a storm and under Anne & Fiona's coordination ran a cake stall on the 22nd September. This was well supported by the community and we would like to say a **HUGE THANK YOU** to those who came and bought stuff from the stall.

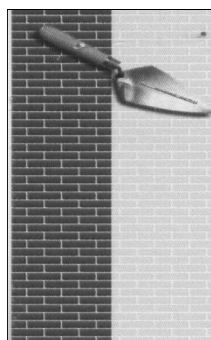
Thank you must go to Vicky and all her hard work for running the refreshments at the Open Garden on the same weekend.

Celebrations for the 50th Anniversary of the Gilgering Pony Club have been organised. Members from Beverley and York clubs will be able to ride or drive and meet at Gwambygine for Lunch. Lesley Barrett-Lennard and Roberta Fleay will be guests of honour at this celebration of the start of Pony Club in our area.

Our October Rally will be held on the 21st October. Please contact Renée Peart on 0427989115 or renee.philip@bigpond.com for further information.

Our Windup and presentations day will be held on the 11th November.

Bush Possum



D.J. YATES

BRICK & STONEWORK RESTORATION
AUTHENTIC REPOINTING OF MORTAR
RISING DAMP RECTIFIED
PROPERTY MAINTENANCE

PHONE DAVE ON 0419041542
A/H 96412868

Coming Events: In Beverley

Sat 06 Oct	Beverley Police Golf Day
Sat 06 Oct	Dog Training-Town Oval
Sat 13 Oct	Platform Theatre-MOVIE: 'The Best Exotic Marigold Hotel'
Sat 13 Oct	Beverley Lawn Tennis Club- Busy Bee
Sun 12 Oct	Beverley Lawn Tennis Club Open Day
Fri 19 Oct	St Mary's Anglican Society's Rose Show
Sat 20 Oct	Dog Training-Town Oval
Sat 20 Oct	Tractor Pull and Dirt Drags
Sat 20 Oct	Dale River Tennis Open Day
Sun 21 Oct	BHPC Rally
Sun 21 Oct	100 Year Anniversary of ST.Andrew's Church, McMullans Hall
Sat 27 Oct	BORMSA Twilight Khanacross
Sun 28 Oct	BORMSA Autocross
Tues 30 Oct	Senior Luncheon
Fri 01 Nov	Official Opening of Pool
Sat 03 Nov	P & C Massive Jumble Sale
Mon 05 Nov	Wild Women of the West Seminar
Tue 06 Nov	Melbourne Cup Luncheon-Dale Hall
Sun 07 Oct	Bowling Club Open Day
Tue 13 Nov	Beyond Gardens-GardenWise Seminar-Town Hall
Sun 18 Nov	Teddy Bear's Picnic at Pool
Sat 24 Nov	30th Anniversary Celebration of the Garden Club-10am-2pm
Sat 24 Nov	Platform Theatre-"DIAMOND" The Neil Diamond Tribute
Sun 25 Nov	Beverley Harvest Festival
Sat 08 Dec	Tractor Pull and Dirt Drags
Sat 15 Dec	Platform Theatre-Family Christmas Concert
Sun 16 Dec	Massive Pool Party
****2013****2013****2013****2013****2013****2013****2013****2013****	
Sat 26 Jan	"The Beggars" AUSTRALIAN SONGBOOK (Australia Day)
Sat 26 Jan	Australia Day Pool Party, hosted by Lion's Club
Sat 16 Feb	Tractor Pull and Dirt Drags
Sat 16 Mar	Tractor Pull and Dirt Drags
28 Mar-01 Apr	45th Annual Art Purchase
Sat 30 Mar	2013 Platform Easter Markets
Sat 13 Apr	Tractor Pull and Dirt Drags

Got an event coming up? Advertise it here.

DRUG & ALCOHOL COUNSELLING

The Wheatbelt Community Drug Service Team will be visiting Beverley Hospital fortnightly.

For appointments please phone Jackie Darby on 96211 055.

The flag was flown at half-mast on the Beverley Town Hall as a mark of respect to:-

- James (Jim) Henry Cann
- June Hibbard (nee Caudle)
- Neil Ennes Williamson
- Keith John (Hammer) Willey

DISCLAIMER

The information in this publication is of a general nature as a service to the ratepayer. The articles included herein are not intended to provide a complete discussion of each subject. While the information is believed to be correct, no responsibility is accepted for its accuracy. No liability is accepted for any statements of opinion or any error or omission.

BEVERLEY BLARNEY

1100 copies each month

ADVERTISING RATES

Size A: (~122 x 180mm)	\$80.00 GST inc
Size B: (~122 x 89mm)	\$40.00 GST inc
Size C: (~60 x 89mm)	\$24.00 GST inc
Size D: (5 lines)	\$ 8.00 GST inc
Size E: (3 lines)	\$ 5.00 GST inc
Size F: (122 x 135mm)	\$60.00 GST inc

Club notes etc are free of charge

The deadline for the next Beverley Blarney is 4pm Tuesday 23 October 2012

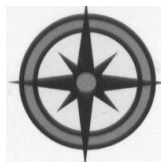
Shire of Beverley
PO Box 20, Beverley, 6304

Tel: 9646 1200 or
Fax: 9646 1409

Email: blarney@beverley.wa.gov.au

All types

All areas



ALLROUND CONCRETE

SHED FLOORS, DRIVEWAYS, FOOTPATHS, HOUSE SLABS,
SILO PADS, FERTILIZER/GRAIN/SUPA SHEDS

ROBBIE HIGGINSON

MOBILE: 0427 384 977

HOME: 9641 2459 FAX: 9641 2339

ABN: 26 997 512 874

PO BOX 345 YORK WA 6302



What's on in Beverley October 2012

Yenyenning Lakes - Beverley

Mon	Tue	Wed	Thu	Fri	Sat	Sun
1 Public Holiday Queen's Birthday (WA)	2 HACC Men's Shed Stay Active Quilting	3 HACC RAOB Ambulance Ladies Bowls Opening Day	4 Line Dancing Lion's Dinner Meeting	5 Op Shop Youth Centre Karate	6 Dog Training Police Golf Day	7 Bowling Club Open Day
8 Weight Watchers Youth Group Movies & Beach	9 HACC Men's Shed Stay Active Quilting Youth Group Free Art	10 HACC	11 Friendly Club Line Dancing Business Network Meeting Youth - Sports Day	12 Op Shop Youth Centre Karate Youth Group Paintballing	13 Busy Bee Tennis Club Platform Theatre Movie Night	14 Lawn Tennis Open Day
15 Weight Watchers Dance Rates Due	16 HACC Men's Shed Stay Active Quilting SCHOOL'S BACK	17 HACC Ambulance Mason Lodge 7.30pm	18 Playgroup Line Dancing Lions Business Meeting	19 Rose Show Op Shop Youth Centre Karate	20 Dog Training Tractor Pull & Dirt Drags Dale Tennis Open Day	21 BHPC Rally 100 Year Anniversary St Andrews Church
22 Weight Watchers Dance	23 HACC Men's Shed Stay Active Quilting BLARNEY DEADLINE	24 HACC	25 Playgroup Line Dancing	26 Op Shop Youth Centre Karate	27 BORMSA Twilight Khanacross	28 BORMSA Autocross
29 Weight Watchers Dance	30 HACC Men's Shed Stay Active Quilting Council Meeting Seniors' Luncheon	31 HACC				