



# BEVERLEY BLARNEY

Edition 348  
October 2013  
No Charge

## STOMP FOR THE STABLES

Walk or run 6km from Beverley to Avondale Stables

**SUNDAY  
20<sup>TH</sup> OCTOBER**

Muster at the  
Bendigo Bank banner  
cnr Hunt Rd & Vincent St  
9AM for 9:30 start

Adults \$10 - School kids \$5  
Under 5's free!  
includes registration  
and sausage sizzle  
(cool drinks for sale)

**MEET THE  
CLYDESDALES!**

Everyone join in and  
help raise awareness of the  
historical 1890's  
Avondale Stables!

**REGISTER ASAP: contact Anne, Beverley CRC • 9646 1600  
adminbcrc@westnet.com.au • [www.beverleywa.com/avondale](http://www.beverleywa.com/avondale)**



This project is supported by the  
Government of Western Australia's  
Road Safety Community Grants Program.

TOWARDS ZERO  
www.ors.wa.gov.au

Proudly supported by  
York & Districts  
Community Bank® Branch  
Bendigo Bank





## PRESIDENT'S REPORT October 2013

### BEVERLEY COUNCIL

I would like to acknowledge the 2011 – 2013 Council for their representation and contribution made on behalf of our community. This has been a varied and busy time, encompassing such diverse matters as engagement of a new CEO, Local Government amalgamations and involvement with the South East Avon Regional Transition Group, and construction of the new recreational facility.

A special meeting will be held for the swearing in of newly elected Councillors and election of President and Deputy President to form the next Council for the Shire of Beverley.

### CR FOSTER RETIRES

West Ward Councillor Belinda Foster is retiring after 16 years as a passionate representative for the residents of Beverley. During this time Belinda has worked with 2 CEO's, 4 Shire Presidents and 25 Councillors.

### ROAD CONDITIONS

Shire graders have been utilising favourable conditions to undertake maintenance work around the district however the recent prolonged wet weather has caused some roads to become quite a mess. Your patience is appreciated, and care requested when travelling off the bitumen in these conditions, including after the strong winds. Many Shires initiate short term road closures, and the Plant and Works Committee could give this consideration if conditions continue in a way that causes roads to become damaged.

### WHEATBELT INTEGRATED AGED SUPPORT AND CARE SOLUTIONS

As previously reported Beverley is involved in a Wheatbelt wide project to investigate integrated aged support and care solutions to support aging in place (ie services assisting the aged to remain in their communities), identify existing and required infrastructure and services, as well as ways to provide dementia care for the aged.

An oversight meeting was recently held for Local Government representatives and Council is currently reviewing the draft needs study for the SEAVROC subregion.

### Public Swimming Pool Subsidy Cut

As a matter of interest, the State Government has ceased payment of the public swimming pool operating subsidy, a decision made as part of the recent State Budget. The swimming pool is an important community facility which costs Council annually well in excess of \$100,000. The subsidy amount was \$3000.

### UWA BEVERLEY DESIGN STUDIO PRESENTATION

Beverley has become the focus of a "design studio" for UWA Landscape Architecture students undertaking individual projects to complete their final year assessments. A community presentation of their work is to be held 11am – 1pm on Saturday 19th October at "Studio One 18" Vincent St for anyone interested. (Shop next to Isobel's Studio)

### AFA GRAND FINAL

Unfortunately victory was elusive for Beverley in this year's AFA grand final however hosting the event was a great success, and another opportunity to bring a large number of visitors to Beverley, from Perth and around the region, particularly York, Northam, Kellerberrin/Tammin and Quairading.

Very favourable feedback has been received regarding the oval preparation and updated facilities. Again a great effort from everyone involved!

Dee Ridgway  
Shire President

### COUNCIL MEETINGS DATES

The Council Meeting Dates for the remainder of the year are as follows:

**29 October 2013**

*(Changed from 22 October due to Local Government Elections being held on Saturday 19 October)*

**26 November 2013**

**17 December 2013**



## SHIRE NEWS UWA COMMUNITY PRESENTATION

The UWA Architectural Landscape Design Students will be presenting their work to date on the Beverley Townscape Projects.

The Shire of Beverley would like to invite anyone interested in viewing their work and designs to come along.

The presentation will be held in the Studio One18 Shop (118 Vincent Street) on **Saturday 19 October from 11.00am – 1.00pm.**

The Shire would also like to thank everyone in the community who has participated or interacted with the students. If you would like more details please call Ali Lewis at the Shire Office on 9646 1200.



### PAYMENT of RATES Due by 14 October 2013

Shire of Beverley rates are due to be paid by Monday 14 October 2013.

Discounts apply until Monday 14 October 2013.

To take advantage of the instalment scheme, the first instalment must be paid by 14 October 2013.

### PAYING YOUR RATES via the INTERNET

We had asked you to enter your assessment number as Ass 0000 as the payment reference (to show on our bank statement).

Due to some banks deeming the word "Ass" as an inappropriate word, please enter your assessment number as the following: **A0000** Eg: Assessment 52123 would be typed as A52123. We apologise for any inconvenience this has caused.



### FIRE BREAK REMINDER

*Fire Breaks need to be maintained by*  
**15 November 2013.**

*If you have any queries please contact*  
**Justin Corrigan - CESM**  
*(Community Emergency Services Manager) on*  
**0427 057 719 or 9646 1200**





**PRICE  
REVIEW**

# INDEPENDENT LIVING UNITS

## Dawson Street Beverley for the over 55's

At the September 2013 Ordinary Council Meeting, it was resolved to amend the Lease for Life entry contribution for the Independent Living Units from \$300,000.00 to **\$180,000.00**

- What you do you pay?  
\$180,000.00 + \$79 per week maintenance fee (includes sewerage & Shire rates)
- What you get back if you leave after 10 years?  
\$120,000.00
- What you get back if you leave within 10 years  
\$120,000.00 plus the remaining retention fee not yet drawn down.

For all the Lease for Life Conditions and Requirements, please contact our CEO, Mr Stephen Gollan on 9646 1200.

Appointments can be made to view the units on Dawson Street via the Shire of Beverley from Monday to Friday 8.30am — 4.00pm.



These two units are brand new and come with floor and window treatments.

Each unit has two bedrooms, one bathroom, two toilets, study nook, lock-up garages and have lovely kitchens.

Whilst local interest is preferred, the units will soon be advertised in Perth and other regional areas.

If you are looking to move from the farm or upgrade to a low maintenance property in an extremely convenient location, or relocate an older family member to Beverley...

**NOW IS THE TIME TO ACT!**



## SHIRE OF BEVERLEY NEWS

### BUSH FIRES ACT 1954

## RESTRICTED BURNING PERIOD

Notice is hereby given that the RESTRICTED BURNING PERIOD for the Shire of Beverley will commence from **THURSDAY 3 OCTOBER 2013 to midnight THURSDAY 31 OCTOBER 2013.**

A PERMIT IS REQUIRED TO BURN  
(Please contact your Fire Control Officer)

**FOR ALL FIRE EMERGENCIES PLEASE CALL 000**

STEPHEN GOLLAN  
CHIEF EXECUTIVE OFFICER

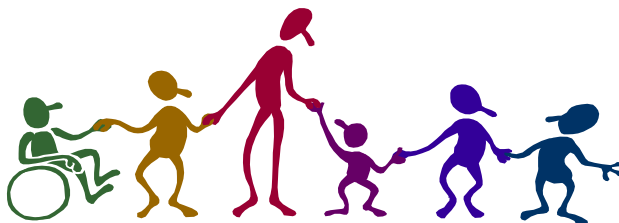
## COMMUNITY and INDIVIDUAL GRANTS

The Shire of Beverley is pleased to announce that Council has recently created the provision for clubs, groups, organisations and individuals to apply for Grants that will benefit the Beverley Community.

Individual Grants known as Personal Development Grants are available to Individuals who reside in Beverley and that will promote healthy personal development (non-professional) in the areas of music, sport, art, science, cultural or academic. The Personal Development Grant is limited to \$200 per person per financial year or \$400 per person per financial year for State or National Representation.

An application form with the selection criteria, undertakings, conditions is available from the Shire Office.

Please note that an allocation of funds has been pre-determined in the Budget and not all applications may be successful. Decisions regarding funding applications are final and will not be reconsidered.



Community Grants will be available to Incorporated Not for Profit Community Groups who are based in Beverley. Only one (1) application per group/organisation will be considered per financial year. Calls for the Community Grant will be made in January and July each year, with the closing date the last Friday at 4.00pm of each respective month. The advertising will occur in the Beverley Blarney and the Shire of Beverley website only.

The application forms with the application criteria, assessment, undertakings and conditions are available from the Shire Office.

Please note: An allocation of funds has been pre-determined in the Budget and not all applications may be successful. Decisions regarding funding applications are final and will not be reconsidered.





# FIRE BREAK & HAZARD REDUCTION GUIDE

### Land within the Townsite - 2.012ha (5 acres or less)

Shall be clear of all inflammable material or grass mown to a height of no greater than 15cm.

### Land within the Townsite - 2.012ha (5 acres or greater)

Shall be clear of all inflammable material or have a firebreak 2.2 metres wide, free of all material provided inside and long external boundaries.

## GENERAL INFORMATION

Rural properties require a 4 metre firebreak around the perimeter of the property, all buildings, fuel drums, haystacks and bulk storage tanks.

**NON COMPLIANT HAZARD REDUCTION**



**COMPLIANT HAZARD REDUCTION**



**NON COMPLIANT FIRE BREAK**



**COMPLIANT FIRE BREAK**



**For further advice, call the  
Community Emergency Services Manager (CESM)  
on 0427 057 719.**

# passive energy systems

local specialists in

## SOLAR POWER

GRID-CONNECT  
OR  
OFF-GRID

## WIND POWER

all electrical  
contracting services

*the sky's the limit*

*call John or Marlene for a quote:*

646 77 263 - [info@pvenergy.com.au](mailto:info@pvenergy.com.au)

100% customised to suit your  
personal needs & budget!



### **BEVERLEY SUB CENTRE**

We wish to update the community on the progress we have made regarding the installation of lighting at the airstrip. You may remember having read something about this project in earlier Blarneys and wondered where we are up to. Sometimes the wheels of progress turn very slowly.

Our president, John Lane, has worked very hard to keep those wheels in motion, to ensure this project goes through to fruition. We have received permission from CASA to go ahead and John has been in discussion with RFDS and other relevant departments to determine that we can meet all the requirements necessary and therefore achieve the best results. Design drafts are now being drawn up and costing finalised.

We would like to acknowledge the support we have received from the general community, the Shire of Beverley and the Aeronautical Society in our endeavour to light the airstrip so we can be better equipped for night-time medical emergencies. We look forward to your ongoing support in the months ahead.

  
**dtworx**  
local carpentry service

Lindsey Doyle

**Ph: 0422 300 338**

PO Box 450 BEVERLEY fax: 9647 2010 email: [dtworx@westnet.com.au](mailto:dtworx@westnet.com.au)

### **MARCELL'S CLEANING**

Commercial & Domestic Cleaning  
Gutter cleaning, window cleaning,  
removal of rubbish and light  
gardening available. Police Clearance



**Phone:**  
**Maree Thornton**  
**9646 1558**  
**0429 646 155**





### **Beverley Football Club**

We would like to thank everyone who helped us run our canteen this year. It made our job a lot easier and we really appreciate it.

Special thanks must go to everyone who helped to make the grand final a huge financial success, even though we were not successful on the track.

Thanks for all the cakes and slices. We had a lot of donations from people who were not necessarily involved in our club - we are a great town and we are a very proud football club.

Thanks again everyone.  
Chantelle Meade and  
Sera Minchin



GOOD TAX ADVICE DOESN'T COST

**IT PAYS!**

Our team is ready to take your tax administration burden away so you can focus on running your business.

We are a local Accounting practice assisting local businesses employing local people.

For prompt professional attention to your Business and Taxation requirements contact us:

***The Rural Specialists***

financial advisors to the Avon Region since 1926

99 Vincent St, Beverley. Office Hours: 9-5 Wed & Thurs

**Phone (08) 9646 1105**

Website: [www.attewells.com.au](http://www.attewells.com.au)

Email: [admin@attewells.com.au](mailto:admin@attewells.com.au)



Chartered Accountants



To view or download a full colour version of the Beverley Blarney go to [www.beverley.wa.gov.au](http://www.beverley.wa.gov.au)  
For advertising price rates, sizes, & deadlines available at this website.



Your Country Music Store  
view catalogue at  
[www.insidemusic.com.au](http://www.insidemusic.com.au)  
view other products at

[www.number90galleryandmusic.com.au](http://www.number90galleryandmusic.com.au)

Contact Peter Byfield  
N° 90 Gallery & Music

90 Fitzgerald Street  
NORTHAM WA 6401

Mobile: 0418 906 307  
email: [number90@westnet.com.au](mailto:number90@westnet.com.au)  
website: [www.number90galleryandmusic.com.au](http://www.number90galleryandmusic.com.au)



## **BEVERLEY RSL SUB BRANCH HALL HIRE**

**All profits go to the Beverley RSL for upkeep of the Hall  
& provision for Memorial Days.**

Large main hall and lesser hall, seating for 80, meal sit down 60, lawned cocktail area with outdoor settings and barbecue, fully equipped commercial kitchen, crockery and cutlery available, reverse cycle heating and cooling, bar facilities and small lounge area, projector and large screen, PA system and lectern, disabled access and off street parking.

Functions previously held: Engagements, weddings, anniversaries, birthdays, New Year, Christmas, wakes, seminars and conferences and award nights.

Phone for a free quotation on Hall Hire  
Contact JANET on 0487 919 855



# STOMP FOR THE STABLES

## Walkathon

### Registration Form

- When: Sunday 20th October 2013
- Start: Gather from 9am for 9.30am start
- Location: Cnr Hunt rd and Vincent St Beverley at Bendigo Bank Marquee
- Info: Call Anne on 9646 1600 or email [adminbcrc@westnet.com.au](mailto:adminbcrc@westnet.com.au)
- Website: [www.beverleywa.com/avondale](http://www.beverleywa.com/avondale)

Surname:	
Given name:	
Address:	
Phone:	Email:
Adults \$10.00 how many ?	School aged child \$5.00 how many ?
Children under 5 are free how many?	Total registration payable \$
Your registration includes your <i>FREE</i> sausage sizzle on arrival at Avondale	

Registrations will be taken online, by post or you can Register on the day.

To Register online please refer to [www.beverleywa.com/avondale](http://www.beverleywa.com/avondale)

Complete the registration form and return. Payment should be made by EFT to BSB 016540 A/C 439823054. Please include your name as reference.

Cheques should be made payable to: Avondale Farm Project Association and posted to PO Box 74 Beverley WA 6304.

If Registering on the day, please meet at the Bendigo Bank Marquee by 9am for a 9.30am start.

#### Rules & Instructions

1. Walking is a physically active sport. If in doubt of your fitness levels, you should seek advice from your GP before taking up a strenuous physical pursuit such as this.
2. Sorry but NO dogs allowed on Walkathon or at Avondale.
3. Please follow all road rules and co-operate with Volunteers whilst walking.
4. Water stations will be positioned at start and midway points of Walkathon. Please bring a water bottle and wear cap and sunscreen.

***I accept that I participate entirely at my own risk and that it is my responsibility to ensure I am fit and able to take part in the event.***

**Name of Participant**

**Signature of Participant**

**If Participant is under age of 18 a parent or guardian should sign on their behalf**



# Media Release

## Meet Robbie & Comet & join in all the fun of Avondale Discovery Farm's Stomp for the Stables Walkathon



The historical Avondale Discovery Farm located in Beverley (130 kms from Perth), has two very special permanent residents.

Comet and Robbie are Avondale's much loved Clydesdale horses that have over the years provided loads of fun and entertainment for children and adults alike. Comet (ten years) and Robbie (nine years) are considered "youngsters" given that Clydesdale horses can live to around thirty years of age. These special Clydesdales love to interact with the public and are used for ploughing and other demonstrations on special days when Avondale opens its doors to the public.

The historic 1890's Oregon timber and iron clad stables complex that house Comet and Robbie is heritage listed and is just one of the many attractions at Avondale. Other attractions include the blacksmith shop, 1850's homestead museum set in Colonial gardens, and an agricultural machinery museum with over 260 items showcasing the developments in mechanisation from early settlers.

**Stomp for the Stables** is a 6 kilometer walk/stomp/run/gallop from Beverley to the historical Avondale Stable Complex on Sunday 20<sup>th</sup> October. The aim of the Stomp for the Stables Walkathon is to raise awareness of the unique stable complex and raise funds for the maintenance and upkeep of the stables that house Comet and Robbie.

On arriving at Avondale, registered participants will join other community members in enjoying a family sausage sizzle, interacting with our famous resident Clydesdales and their handlers, or they may choose to enjoy the other attractions available at the property including a family picnic area with BBQ's. A bus will then transport all participants back to the Beverley township.

Walkathon registration is \$10 for adults, \$5 for school children with under 5's free. Registration includes a free sausage sizzle on arrival at Avondale.

Join in the family fun by registering with Anne from the Beverley Community Resource Centre on 08 9646 1600 or email her on [adminbcrc@westnet.com.au](mailto:adminbcrc@westnet.com.au)



This project is supported by the  
Government of Western Australia's  
Road Safety Community Grants Program.

TOWARDS ZERO

SPEED AND RED LIGHT  
CAMERA FUNDED PROJECT

[www.ors.wa.gov.au](http://www.ors.wa.gov.au)

York & Districts  
**Community Bank®** Branch







# FREEMASONS TAVERN



German Beer, Nibbles, Music  
Friday 25<sup>th</sup> October 2013  
From 7pm  
See in-house notice board for more details.....

## NEW TO THE TAVERN

### PIZZA TAKE-AWAY

\$20

Freemasons Supreme  
Meat Lovers Pizza  
Ham, Cheese & Pineapple Pizza  
Vegetarian Pizza  
Chicken, Cheese & Pineapple Pizza  
(13 inch base)

Phone 9646 1094



**POOL COMP**  
Calling for  
Expressions of Interest  
See in-house notice board for details



Melbourne Cup Luncheon  
Smorgasbord  
Celebrate in style at the Tavern  
5<sup>th</sup> November from 11am  
Free glass of bubbles on arrival  
Prizes for Best Hat & Best Dressed  
Sweep Stakes  
Music, Fun & Laughter

Booking Essential  
Call 9646 1094 and book a table

STEAK  
or  
FISH  
SUNDAYS

\$12  
Lunch or Dinner



**SUNDAY  
SESSIONS**

Next Jam Session  
Sunday 27<sup>th</sup> October 2013  
From 4pm  
Call Greg  
9646 1094 for more info



**AGM**  
Beverley  
Agricultural  
Society

Wednesday 16 October 2013  
7pm at Hotel Beverley  
**ALL WELCOME**

## BEVERLEY NATURALIST CLUB ANNUAL GENERAL MEETING



Where: Beverley Naturalist Club  
When: Tuesday 22nd October  
Time: 9.00am  
Lunch provided followed by a  
bushwalk at Brookling Street  
Reserve. All welcome.

For more info call Phyllis on 9646 1469 or  
**0437 483 175**



## STEEL STAND

**HEAVY DUTY**

2.5m<sup>2</sup> x 1.5m height

**\$250.00**  
negotiable

Phone 9646 0876

# AVON VALLEY WINDSCREENS

*A preferred windscreen repairer*

*Lic MR11693*

**Cars, Trucks & Tractors  
Replacements & Chips**

*Kale & Ron Robinson*

**0429 001 393**

32 Georgiana St, York 6302

*We come to you!*



## TV Antennas

**UHF CB Repairs**

**Digital TV Upgrades**

**Reception Problem Solving**

Qualified communications technician.  
Reasonable labour charges.

Onsite service.

Repairs and installation to some car audio, car  
security, mobile phone handsfree.

Reversing camera systems for automotive and  
machinery.

Based locally in Beverley

**Regional Antennas Plus**

**ALAN PRIMROSE**

**0408 002 965**



## Thank you

We would like to extend a huge thank you to all of our friends and family who sympathised and supported us whole heartedly during the time of our dilemma - there are so many of you - too many to mention but you all know who you are.

We appreciated the many visits and phone calls during that very trying time, your input was overwhelming, we are so glad that it is all over and we can go on loving our horses.

Thank you so much to everyone.

Kerry and Corrie Luk

## **Beverley Amateur Swimming Club**

### **Coach Needed**

We are seeking expressions of interest for coach of the Beverley Amateur Swimming Club.

This is an honorary position although some travel costs may be paid. There is a very strong and supportive committee to work with and a group of very enthusiastic children.

Please call Fiona Fisher 9647 2045 if you are interested.



## **Creative Arts Vacation Program**

0-12years

To avoid disappointment, book early, spaces are limited.

Bringing education to life ☺

\$64 per full day / \$36 per half day



### 1<sup>st</sup> – 5<sup>th</sup> October

Monday 1 <sup>st</sup> October	WA Public Holiday Queens Birthday - Enjoy ☺
Tuesday 1 <sup>st</sup> October	We are so lucky to have Jenny Couper our local Artist joins us today. Come and get creative.
Wednesday 2 <sup>nd</sup> October	Natural Gifts – Come and try your hand at making paper, aromatherapy soap and other fun gift activities.
Thursday 3 <sup>rd</sup> October	Excursion...Araluen Botanical Park – Combining nature and Art sparks for exciting day in the countryside nature trails clay modelling, craft and picnic in the hills. \$15 per child max 8 children, Or At Milly's – dress up day – water colour magic and garden party
Friday 4 <sup>th</sup> October	Natures Art – Today we will be exploring all the different ways we can use the natural environment to create different pieces of art.

### 7<sup>th</sup> – 11<sup>th</sup> October

Monday 7 <sup>th</sup> October	Rhyme and Rhythm – Make your own musical instruments, tap your way to stardom, shake rattle and roll or sing your way through your day.
Tuesday 8 <sup>th</sup> October	Martin Phillips is our fantastic guest today – Have you got rhythm... Come and get a rhythm fix through this amazing day of multi-cultural drumming and dance
Wednesday 9 <sup>th</sup> October	Excursion to Araluen Botanical Gardens – painting the beautiful gardens in water colours, a picnic in the park followed by the sensational production 'story time in the hills' at the Roleystone Theatre – a day not to be missed - \$20 per child max 8 children. Or At Milly's – dress up day – water colour magic and garden party
Thursday 10 <sup>th</sup> October	We are lucky to have Jenny Couper our local Artist joins us today. Come and get creative and release your potential
Friday 11 <sup>th</sup> October	Wiggles and Giggles – Michelle our special guest comes to teach us all how to dance Bollywood style and Rock and Roll... a whole day of fitness smothered in fun.

It doesn't stop here - Milly Molly Mandy's is an accredited Early Education Centre we run a daily creative arts program 50 weeks a year for all children 0-5. Speak to us to find out more...  
Proud to be building confident kids every day!

For more information or to book please email [bmfc@westnet.com.au](mailto:bmfc@westnet.com.au) or call 96421037

## **AVON DRILLING SERVICE**

**Mick Lewis**  
Ph: 9572 7828  
Mob: 0427 814 055

**Brenton Legg**  
Mob: 0404 708 979

**WATER BORES  
BORE DEVELOPMENT  
MINI EXCAVATOR HIRE  
POST HOLE DRILLING**





# NSA Holiday Sports Beverley

**All school aged kids welcome!**  
**Heaps of sports and activities.**  
**Free healthy lunch included.**

Programme proudly  
supported by:



**Where: Beverley Youth Centre**

**When: Wednesday 9<sup>th</sup> October 2013 10am – 2pm**

**All welcome, bring your mates it's free.**





life & Beverley CRC proudly presents

# MAD MEN'S MUSTER



**Come and see what 'The Big Hoo Haa' is all about**



**Proudly supported by**



WA Suicide Prevention Strategy



- LIVE Presentation from Glen Mitchell
- Tasty Treats from the Smoke Shack
- Great laughs with 'The Big Hoo Haa'
- Regional Men's Health and the Men's Pit Stop
- Giveaways Galore valued over \$800
- Fully catered event

**When: Wednesday 9 October 2013**

**Where: Beverley Function & Recreation Centre  
Forrest Street**

**Time: 10.30am to 2.30pm**

**RSVP for catering purposes only on 9646 1600**

## **No Charge and No Chicks**





Members of the Garden and Tree Club  
'Living in the Country' display at the show

## Beverley Garden and Tree Society

This month's meeting at the Dead Finish Museum was well attended and we had a lot to discuss. President Betty began by congratulating us on the display at the 137th Beverley Act-Belong-Commit Show. The 'Living in the Country' display was admired by many, the president further congratulated the members who exhibited and won prizes. Morag's beautiful hanging basket along with Dalene's windmill are going to the Royal Show!

This past month members have renewed the planter flowers at the lodge and they are looking good. A combination of Violas and Livingstone daisies.

Members visited the residents at the lodge on Thursday 12 September for friendly club activities. Thank you to Vera for organising this day.

Plans are underway to host a visit from the Pingelly garden and craft club on Tuesday 1st October. We will give them morning tea at the Dead Finish and then we will all be visiting some gardens in the area. Lunch will be at the RSL Hall then on to visit another garden on the way home.

On the 18th September our group went to visit the York Garden Club, they were very welcoming and thanks must go to their President Ian Crombie for his hospitality on the day and assistance in organising the event. It was lovely catching up with old friends and visit some beautiful gardens. A special mention of the 'Bushland Garden' that is located in the middle of town on Ford Street, if you get the chance whilst you are in York this garden is truly stunning at the moment.

We have booked a stall at the caravan and camping show and members are asked to contribute in any way that they can, all donations will be greatly received.

There will be no formal meeting in October as this is the day Pingelly will visit. We welcome new members  
President, Betty Cable - 9647 1043  
Secretary, Dalene Davies - 9647 1047

GJ & VJ SEEBER  
trading as

# BEVERLEY PLUMBING & GAS SERVICES

Established in Beverley since 1997  
Your Local Licensed Plumber and Gas Fitter  
Servicing Beverley & Surrounding Districts

## PLUMBING

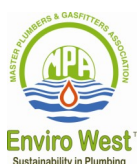
- ★ ACCREDITED WATERWISE & ENVIROWEST PLUMBER
- ★ SEPTIC INSTALLATIONS
- ★ SEWERAGE CONVERSIONS
- ★ MAINTENANCE & INSTALLATION of all PLUMBING REQUIREMENTS
- ★ INCLUDING BACKFLOW INSTALLATION and TESTING
- ★ NO JOB TOO SMALL OR TOO BIG
- ★ HOLDS CLASS 'A' PLUMBERS LICENCE

## GAS FITTING

- ★ LICENSED (UNRESTRICTED) GAS FITTER for all ASPECTS of gas
- ★ MAINTENANCE and INSTALLATION
- ★ AUTHORISED SERVICE AGENT for ELECTROLUX

Mob: 0418 929 141  
Fax: 9647 2109  
Tel: 9647 2115 (after hours)

Water Auth Lic No. PL216  
Gas Lic No. 386  
Back Flow Lic. 103



# **GARAGE SALE**

**Saturday 19th October**

**9am - 3pm**

**Lot 1308 WATERHATCH ROAD**

(Follow Great Southern Highway from York, turn right onto Williams Road, turn right onto Waterhatch Rd, 3kms on the right)

## **SHED CLEAN OUT**

Hand tools, Power Tools, BBQ, Garden Tools, Assorted Pumps, Filters, Paint, Poly pipe and other miscellaneous workshop equipment.

**EVERYTHING MUST GO**

### **SAMBA - Card Game**

Welcome any ladies interested in learning the card game

**WHEN:** Saturdays **TIME:** 1.00pm **WHERE:** CWA Hall, Dawson St.

Afternoon Tea provided

Enquiries 9646 1271



## **HANDYMAN AVAILABLE**

**I CAN BE YOUR 2ND PAIR OF HANDS  
FOR THE JOB YOUR DOING**

**OR**

**I CAN DO THE JOB FOR YOU  
WELDING, MECHANICAL, BUILDING.**

**NO JOB TOO BIG OR TOO SMALL**

**GIVE ME A CALL**

**DARYLE - 0400 214 498**

## **COPING with CHANGE**

As individuals we all have a different capacity to handle stress. Our own innate level of resilience is tested when challenged by change either on a personal front or in the workplace. Our life's journey will have many unknowns and the only guarantee in that journey is that there will be "change".

Dealing with change will often throw up a number of variables. Some people are more at risk than others of becoming dysfunctional during the change process. From studies undertaken those who may struggle with change can be identified as follows:

- individuals who get meaning from a single purpose, like work. This is usually us blokes as we are primarily defined by our role and function (ie. our job). The social/spiritual dimension of most blokes often goes unexplored; and as blokes we just don't just talk about issues close to our heart;
- individuals whose role is threatened;
- individuals who are passionate about their role;
- individuals whose security is threatened.

Research tells us that half the population will take change in their stride having little or no affect on their wellbeing. The other half of the population will be affected, and the percentages can be broken down into the following categories:

- 20% showing stress signs for up to six weeks (is this normal?);
- 20% stress signs for up to 12 months;
- 10% profound affects (chronic trauma – distress unresolved).

If you fit into one of the 20% or 10% categories seek support and have a chat to someone about your distress. It may be through your EAP (Employment Assistance Program), doctor or private counsellor and/or involve Talking to Mate (close friend or your family).

Vocational wellbeing is extremely important because we all spend a vast majority of our time at work. Some points you may want to consider before making decisions on the work you do or making a change are:

- be happy and enjoy what you are doing;
- be passionate about what you are doing;
- keep the work life balance right;
- keep growing your experience, it's never complete.

Cheers

Owen and the Team at



Delivered by Wheatbelt Men's Health

PO Box 768, Northam WA 6401

Phone: 08 9690 2277



## RON GLASSBY BLOCK MAINTENANCE

Small block slashing & mowing  
Fire breaks & post hole drilling

Beverley and  
surrounding areas

Reasonable rates

Call Ron on 0419 914 177  
or 9646 0729



## RA-AN ENTERPRISES

All Dozer and Excavator Work  
Including:  
Dam Sinking  
Dam Cleanout and Enlarging

Excavator with Wood Shears,  
Tilt Bucket and  
Hydraulic Grab.

Locally Based at West Kokeby

Phone Ray 0428 936 621 or  
08 9646 4136

**ChemDry®**  
Drier. Cleaner. Healthier.™  
Betta Finish



Superior carpet  
& upholstery  
cleaning

Freecall 1800 017087  
bettafinish@wn.com.au  
Fax 08 96225473

## ST MARY'S ANGLICAN SOCIETY - BEVERLEY ROSE SHOW

Friday 18 October at the Beverley Town Hall  
Opening at 12.30pm

### SECTION 'A' ROSES

1. BEVERLEY CHAMPIONSHIP - 6 roses, at least 4 varieties
2. Rose - RED
3. Rose - PINK
4. Rose - YELLOW or GOLD
5. Rose - CREAM or WHITE
6. Rose - BI-COLOUR
7. Rose - FANCY COLOUR
8. Rose - PEACE
9. Rose - THREE DISTINCT VARIETIES
10. Four roses - one (1) variety - one bud showing colour,  
one half open, one exhibition & full blown.
11. Container of POLYANTHUS or FLORIBUNDA roses,  
(a) one variety (b) mixed
12. Vase of roses - not more than nine blooms
13. Vases of FULL BLOWN ROSES

### SECTION 'B' ROSES

14. A MODERN ARRANGEMENT with roses predominating
15. ARRANGEMENT OF ROSES (for mantelpiece) any foliage
16. ARRANGEMENT OF ROSES with foliage - school aged children

### TROPHIES

ROSE BOWL for Beverley Championship  
RUNNER UP to the championship  
BEST ROSE  
NEW EXHIBITOR

### RULES

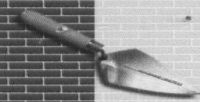
ALL ENTRIES - 20 cents each  
ALL ENTRIES must be ready for judging by 11.00am on the morning of  
the show  
ALL ENTRIES must be grown by exhibitor, except in section 'B'.  
Enquiries to Les Heal 9646 1193

\*\*\*Stalls and Raffles\*\*\*



**Travelling Overseas or around Australia?**  
To book a holiday of a lifetime  
Contact your local travel professional  
Catherine Riches

Tel: (61)8 9647-2173 Email: [broker3@bigpond.com](mailto:broker3@bigpond.com)  
Travel Associates Australia Pty Ltd - Licence Nbr:9TA1188  
Member of Travelscene American Express



**D.J. YATES**

BRICK & STONWORK RESTORATION  
AUTHENTIC REPOINTING OF MORTAR  
RISING DAMP RECTIFIED  
PROPERTY MAINTENANCE

PHONE DAVE ON 0419041542  
A/H 96412868



I would like to Thank Beverley Hospital and Staff and all the wonderful friends for the cards, well wishes and help shown to me during my recent rehab  
Sue Eramiha

### **GOPHER / SHOP RIDER / SCOOTER SERVICE DAY**

**TUESDAY 8 OCTOBER**

Like all forms of transport, gophers, shop riders and scooters need to be serviced.

A representative from Gosnells Scooters will be in Beverley at the St John Ambulance building on Tuesday 8<sup>th</sup> October to service gophers/shop riders/scooters.

The cost for this service is \$60 and will take 20 to 30 minutes.

Please phone Dorothy Sampson on (9646 3213) Tuesdays or Wednesdays to make an appointment.

Please also advise Dorothy if you require a new battery.

Disability aids and scooters will be on display and for sale.

### **HOUSE FOR RENT**

2 Bedrooms, suit single or couple  
Ring evenings 9646 4031

### **CONTRACT HARVESTING**

At competitive rates, field bins available  
Contact: 0428 925 662

### **FOR SALE - HENS FREE RANGE**

\$10 each, 10 for \$80 or 20 for \$120  
Pullets 14 WKS \$16 each, 10 FOR \$150  
DEL Friday 11 OCT to Beverley, Kokeby  
Phone: 9844 3485

### **CASUAL TRUCK DRIVER**

**Wanted for Harvest**

MC Licence required  
For more information please contact:  
**Garry Miller 0428 464 066**

### **COUNTRY LINE DANCING**



**Every Thursday  
9.30am to 12.00pm  
Beverley Town Hall**

**Enquires: Jan  
9646 4041**

## **Unique Strokes W.A. Painting & Decorating**

Reg. No. 4236

**ROB BAIN**

**QUALIFIED LOCAL TRADESMEN**

For Guaranteed Traditional  
Workmanship & Prompt Free Quotes

**Phone: 08 9647 2012**

**Mobile: 0418 904 013**



## **BEVERLEY COMMUNITY DIRECTORY 2014**

**The FREE 2014 Beverley  
Community Directory will be  
distributed soon . This is your  
last chance to submit your  
contact details or advertise  
Contact Beverley CRC  
on 9646 1600**

# **Countryside Memorials**

Cast Stone

Granite

Marble

Plaques

Added Inscriptions

All Repairs and Restorations



**25 YEARS PROFESSIONAL EXPERIENCE  
FREE DESIGN AND QUOTE**

**Servicing All W.A. Country Areas**

**9622 5544**

**OXTER SERVICES**

[www.oxter.com.au](http://www.oxter.com.au)

[oxter@westnet.com.au](mailto:oxter@westnet.com.au)

## **Are you over 40?**



**Have you had any of these  
Breast symptoms...**

- ☐ A change in the size, shape or feel of your breast
- ☐ A new lump or thickening in one breast or armpit
- ☐ Puckering, dimpling or redness of the skin
- ☐ Changes in the position of the nipple, or nipple discharge
- ☐ New pain or discomfort that is only on one side

**If you have...**

**Tell your doctor**

The earlier cancer is found, the greater the chance of successful treatment.



For more information visit: [www.findcancerearly.com.au](http://www.findcancerearly.com.au)

**Cancer Council  
Helpline  
131120**

**Cancer Council**





## Station Gallery and Platform Theatre News

### Station Gallery



#### *Artist-in-Residence*

Resident artist Anita Stewart from Georgia USA thoroughly enjoyed her time with us and was able to see and paint a little of the countryside while here. Thankyou Beverley people, in particular, Dee Tilley, for your generosity in welcoming our first international artist to the town. The first of her workshops was well attended and some valuable painting hints were acquired by those who attended. Anita has left behind a painting to be sold with proceeds going to the Station. Check it out at the Gallery.

Our next artists include Dorothy McInnes, Jenneke Biehl, Suzanne Crawly & Heather Chipman who are revisiting the Station as they felt their residency last October was too short. Joining them is Sally Watts, also from Perth, who is an illustrator as well as making small sculptures which she sells locally and internationally. Whilst in Beverley she and the other artists will be working with some of our school children making small dog sculptures based on recycled materials such as junk mail. What a lucky class that will be! And as the artists are volunteering their time and expertise we thank them profusely.

To culminate this project there will be an exhibition of the sculptures at the Station Gallery on Wednesday 23<sup>rd</sup> October at 6pm (following the Beverley Station Arts AGM at 5pm). All welcome - entrance fee \$7 (\$5 for BSA members) will be charged to cover costs of drinks and nibbles. Free admission to children. Artworks by the artists-in-residence will also be displayed for sale, and if it is anything like their exhibition last year you will need to be quick if you wish to purchase as they were very popular.

For further information regarding residencies keep an eye on the Bulletin and/or contact Artist in Residence Coordinator Marylou Hutchinson on 9647 1027 / 0427 085 511 or email: [hutchinson@wn.com.au](mailto:hutchinson@wn.com.au)

#### *Artists in Residence Programme for the remainder of 2013:*

October 01 - 31: Dorothy McInnes, Jenneke Biehl, Suzanne Crawly, Heather Chipman, Sally Watts (Perth)

November 09 - 27: Janet Pfeiffer (Perth)

November 28 - end December: Danielle Smith (California, USA)

### Annual General Meeting

The AGM for members (Friends of the Station) of Beverley Station Arts will be held at the Station Gallery on **Wednesday 24<sup>th</sup> October** at 5pm. This will be followed by the current Artists-in-Residence purchase exhibition and sculptures by Beverley School children.

If you wish to become a member of Beverley Station Arts Inc (Friend of the Station) please see treasurer Pauline at the Newsagency, phone 96461042. Membership forms can also be downloaded from [www.beverleywa.com](http://www.beverleywa.com) (NB cheques to be made payable to Beverley Station Arts) and sent to PO Box 112, Beverley 6304.

### Country Arts

On Monday 16<sup>th</sup> September the Country Arts organisation held its inaugural regional (Wheatbelt) Country Arts WA Members networking event in Merredin. Though a bit of a hike, it was a wonderful opportunity to meet and greet, discuss upcoming events and share stories with each other - with a focus on community engagement. Of the twelve who attended only two of us were there as volunteers - seemingly the pattern of late.



### Beverley Choir

The *Beverley Station Singers* has been practicing for the annual Country Choir Bash on September 29<sup>th</sup> which will all be over by the time this Blarney edition is distributed. We thank in advance the dedication of Kelly Newton-Wordsworth in directing Beverley's enthusiastic group who will meet again on Wednesday night 9<sup>th</sup> October. Additional singers are always welcome - see separate advertisement and look out for messages in the Beverley Bulletin or contact Sarah Miller - Ph 96464066 or email [miller@reachnet.com.au](mailto:miller@reachnet.com.au)

### Platform Theatre

Beverley Station Arts is very excited to present two outdoor events in November at the Platform Theatre:

♫ Don some tartan and enjoy a variety concert of Scottish entertainment on **Saturday 2nd November**. The **SCOTTISH NIGHT** will be catering to everyone's tastes with performances by world acclaimed musical duo

Catherine Fraser and Duncan Smith from SA playing Scottish fiddle music; WA's favourite civilian pipe band Perth Highland Pipe Band; the wonderful and celebrated dancers from the WA Highland Dance Academy and the popular flame throwing punk rocker Bad Piper. Gates will open at 5pm with entertainment starting at 6pm sharp and finishing at 10pm. Book now to secure your seat!

A note about Catherine Fraser and Duncan Smith who perform Scottish fiddle music with a crossover into traditional 18th century Scottish chamber music - Catherine plays the fiddle and Duncan accompanies on piano. Catherine and Duncan have performed and taught extensively not only in Australia and New Zealand but also in the US, Canada, Scotland, England and Germany. They are a rare combination of technical ability and emotional depth and have had rave reviews throughout the world including "extraordinary talent and taste", "...superb, clear & elegant...just how Scottish music should sound", "an elegantly lyrical shade of Scottish Chamber/folk". Such praise led to their fourth CD *Rhymes & Reasons* named as one of FoxWorld Europe's Top 10 recordings of 2009, and in 2010 Catherine was named Best Fiddler as Soloist in Australasia at the prestigious Golden Fiddle Awards.

#### SO, RECAPING:

- WHAT: Scottish Variety Concert
- WHERE: Beverley Platform Theatre
- WHEN: Saturday 2 November
- TIME: Gates open 5pm Entertainment Commences 6pm sharp, finishes 10pm
- COST: \$30 pre-booked or \$35 at the gate. Children under 15 half price.
- TICKETS: Available from Beverley Newsagency or ONLINE BOOKINGS: [www.trybooking.com/DKMN](http://www.trybooking.com/DKMN)
- Food and coffee available

Licensed Event, Strictly NO BYO, Under 18's must be accompanied by parent/legal guardian

♫ On **Saturday 30th November** Perth's hottest rock and roll show band '**Chain REACTION**' promises a night full of fun and dancing to the greatest classic hits of all time with gates opening at 6.30pm and entertainment commencing at 8pm. Pre-bookings \$30 at Beverley Newsagency or ONLINE BOOKINGS: [www.trybooking/DNIY](http://www.trybooking/DNIY) otherwise \$35 at the gate. Children under 15 half price. Further information: [www.beverleywa.com](http://www.beverleywa.com) or contact Jenny 0419 040 063

If you would like to be included on the email list for notification of coming events (so you can forward to friends), email secretary Sarah Miller [miller@reachnet.com.au](mailto:miller@reachnet.com.au)

#### Dates to mark on your Calendar:

September: Sunday 29 COUNTRY CHOIR BASH - an afternoon of choirs presented by Voice moves

October: Wednesday 24 AGM and ART EXHIBITION at the Station Gallery

November: Saturday 2 SCOTTISH NIGHT - Catherine Fraser and Duncan Smith - Scottish fiddle chamber music; Perth Highland Band; Highland dancers; the Bad Piper

November: Saturday 30 CHAIN REACTION - 6 piece Show Band playing Rock n Roll ballads and dance classics

December: Saturday 21 VARIETY CHRISTMAS CONCERT - Hip-hop Urban Youth Crew; Choir; 3BOB Band

January: TBA MOVIE NIGHT

February: Saturday 15 QUEEN & FREDDIE MERCURY TRIBUTE by *BOHEMIAN RHAPSODY*

March: Saturday 8 OPERA ON THE PLATFORM

April: Saturday 5 DRAMA PRODUCTION

April: Thursday 17 - Monday 21 April 46TH ANNUAL ART PURCHASE EXHIBITION (presented at the town hall with OFFICIAL OPENING Thursday 17)

April: Saturday 19 PLATFORM EASTER MARKETS - art & craft, gourmet food & music.

June: Sunday 1 CALENDAR GIRLS (to be presented at the Beverley Town Hall)

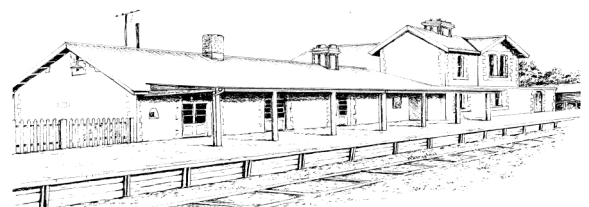
#### Station Gallery Open Hours

11.00am - 3.00pm

Thursday, Friday, Saturday and Sunday

Jenny Broun, President, Beverley Station Arts

9646 1500 / 0419 040 063 / [brounj@westnet.com.au](mailto:brounj@westnet.com.au)





The Brookton  
Photographic Image and Art Group  
presents the

## 2013 Brookton Photo & Art Exhibition

### Gala Opening Evening

Friday 4th October  
Live Music | Finger Food  
Drinks On Sale  
Doors Open 6:30pm  
Official Opening 7:30pm  
Tickets \$10 from Brookton CRC,  
Gill Rural Traders and at the door

Exhibition Open  
Saturday 5th - Sunday 13th October  
10am-4pm daily  
Morning & Afternoon Tea Available  
Entry: Adults \$4, 15 and under FREE



 Like  
Brookton Photo  
& Art Exhibition

22nd MARCH 2014



www.otms.org.au



Shire of  
Brookton



Rosalie  
Pech Eva  
Architect



Pingelly and Brookton Community Bank\* Branches



Senior Citizen's Afternoon  
Wednesday 9th October  
from 2pm  
with a performance from  
piano students

"CAPTURED"  
themed photo & art exhibit in  
Lesser Hall celebrating  
Brookton Police Station's 100th year.

Community  
art & photo  
exhibits

Enquiries to:  
Judy Williams, 9642 1256 nichol@westnet.com.au  
Holly Bassett, 9642 1081 hollybassett@bigpond.com



### GYM MEMBERSHIP

\*\*\*\*GET FIT BEFORE SUMMER\*\*\*\*

Gym Memberships can be obtained from the Shire office or from [www.beverley.wa.gov.au](http://www.beverley.wa.gov.au).  
Beverley Gym, The Old Courthouse, Vincent St.



# Dawson's Concrete & Reinforcing

## "Your Local Beverley Concreter"

- Concrete Formwork & Steel Fixing
- Driveways, Shed floors, Maintenance pits, Silo pads, Super sheds, House pads
- Fully mobile service
- Over 30 Years Experience
- 7 Days A Week
- Professional, Reliable Service

*Phone for a Free Quote*

**SANDY DAWSON**  
**Mobile: 0417 375 221**  
Email: [pameladawson@bigpond.com](mailto:pameladawson@bigpond.com)



Beverley Station Arts presents

# SCOTTISH NIGHT



Don some tartan and enjoy a variety concert of  
Scottish Entertainment, from Classical to the Bad and Highland in between.



Catherine Fraser and Duncan Smith  
Classical Scottish fiddle and piano



Perth Highland  
Pipe Band



The Bad Piper  
Flame throwin' Punk Rocker



Scottish Highland Dance Academy

## Saturday 2 November

VENUE: Beverley Platform Theatre, 120 Vincent Street BEVERLEY

TICKETS: \$30 pre-booked or \$35 at the gate. Children under 15 half price.

Available from: Beverley Newsagency ONLINE BOOKINGS: [www.trybooking.com/DKMN](http://www.trybooking.com/DKMN)

Outdoor Event, Gates open at 5.30pm with entertainment commencing at 6.00pm

Licensed Event, Strictly NO BYO, Under 18's must be accompanied by parent/legal guardian

Food and coffee available Information: [www.beverleywa.com](http://www.beverleywa.com) or Contact: Jenny 0419 040 063







York Estate Agents – (Beverley Division)

Local Residential & Rural Experts, honest and caring for your requirements. Whatever you are looking for, be it your first home, or retirement home, a hobby farm, a dream block of land or investment.

We can help with a can do Professional Attitude.

Contact the Team at York Estate Agents for all your Real Estate requirements. Office: 72 Avon Terrace York WA 6302

Residential: **Helen Stubing** 0407 964 611 Your Local Sales Rep

Rural: **Michael Bawden** 0403 268 158 FREE Appraisals

Rentals: **Jenette Callaghan** 0418 929 011

Office: T: 9641 1335 F: 9641 1334

**Helen:** Email: [stubing@oceanbroadband.net](mailto:stubing@oceanbroadband.net)  
Office: [yorkfn@westnet.com.au](mailto:yorkfn@westnet.com.au)  
Web: [www.yorkfn.com.au](http://www.yorkfn.com.au)

## Calling all Margaret's

Corrigin invites you to their  
Margaret Club  
Christmas Lunch  
on Monday 25 November.

For more details contact:

Margaret McAndrew  
Phone: 9063 2276

Or

Margaret Rendell  
Phone: 9063 2414

**Margaret**

# Beverley Earthmoving Contractors

40 years experience in all aspects of Earthmoving.

**One stop shop for all your Septic Systems.**

Supply & Install

Plumbing Licence PL 5829 Gas Fitting Licence GF 7422

### ALL ASPECTS OF EARTHMOVING

House Pads Site Cuts

Block Clearing Laser Levelling

Service Trenches

To Shire and engineer specifications.

### SAND SUPPLIES

Metal Gravel

### BULK HAULAGE

Truck and Dog Trailer Backhoe 315 SE John Deere

Side Shift Extender Hoe

Bob Cat Loader

Forklift Post Hole Borer

General Freight ingage and over width loads  
credited.

**Phone:**

**Ron 9646 0318**

**0429 088 689 or 0488 087 316**



## Beverley Visitors Centre

Since last month, Beverley has had a fantastic Agricultural Show with over 3,000 people through the gate. Congratulations to all involved. A great credit to everyone involved.

Visitors seem to have continued coming to Beverley since then, plus more bus tours. Wildflowers are a big interest at this time of the year yet some people are saying that there aren't that many but others have been delighted with their finds.

This week we are expecting a huge influx of people with their motorhomes. The Tourist Bureau hopes to welcome many of them and we know all Beverley organisations are working 100% to make sure everything goes well in the time they are here. Fingers crossed that the blustering weather calms a little.

As ever our volunteers are working extra shifts. We can always rely on them but if you wish to help us at anytime you know where we are.

Finally, memberships at the bureau are due for those businesses and community groups that would like the opportunity to promote their business or events. Forms are available at the bureau or by emailing, please note we have changed our email address and the new details are: [beverleywa@westnet.com.au](mailto:beverleywa@westnet.com.au)  
Thank you again to everyone.

## BEVERLEY PATCHWORKERS AND QUILTERS

Most of our members were present at our AGM in September when we made plans for the remainder of this year and into 2014.

A number of us are looking forward to a weekend of sewing, talking, eating walking and a general good time together at Binningup. We plan to do a small project together, trying out a technique new to most of us, and with the help of our president who "knows what to do".

A number of our members attended a workshop at the Parkerville quilting group one Saturday. Two ladies made a bag and one learnt to do the 'square in a square' block and is in the process of making these into a small quilt.

The travel bug is again getting to some of us with one or two away at the moment and a number heading off in early October. We wish all travellers a happy and safe trip.

We will be together again in November ready to attend a Friendship Day with the Baskerville Group.

For information about our group or to become a member please contact

Catharina Turle. 9646-0876  
Jan Sherwood. 9646-0796



## T.M. Hair Design



Family Hairdressing at reasonable prices.

For Ladies & Gents hairdressing needs.

Cuts, colours, perms, sets or blow dry's,  
our professional hairdressers are here to help you.

Just ask for whoever you'd like, when you book.

You will also find some appointments on Saturdays available.

And as always...**Bookings are essential.**

**At Secrets.....** Our bright & colourful Vivid collection of Spring/Summer fashion is here & making a fresh new hit for the warmer months ahead. Lots of mix 'n match sets with handbags, clutches, necklaces, bracelets & earrings, & we have added light weight summer sandals as well. If these are well received we will add more footwear styles to our regular range.

Are you in need of a lamp update at your house?

Call in to see our new lamp range in very classy styles & colours.

The updated Didgeridoona wool insulated products have arrived, offering some great gifts for our men folk (& there are some lovely things for girls too!!!) 'Especially for the ladies the new "Smitten Perfect Pout" lip colour range...Dare you to buy only one!!! Great fun & excellent "stay on" ability. Just the thing for hard to buy for young ladies. We will be adding the "Smitten Whipped Mousse" soon.

This is a 5 in 1...foundation, moisturizer, sunscreen, concealer, & filler in one convenient application. Designed by "Smitten Organics" right here in Perth, WA. With Christmas approaching fast, its eyes open for suitable gifts for your family & friends. We have you covered with items for all budgets. If you can't find something in your price range ask our friendly team for suggestions as they know where things are hiding!!!

We will gladly offer our complimentary gift wrapping service.

So come in, make your selections, call back & your gifts will be wrapped & ready to put under your tree.

Don't forget our gift vouchers. An easy & fun way to shop.

With your continued support we are able to support our community groups.

So let's all work together for the benefit of our own town.

**Call in to 100 Vincent St, or phone 9646 1122.**

## Northam Physiotherapy



**Northam 8am - 6pm  
Monday to Friday**

**York Cunderdin Toodyay  
By Appointment**

**Ph: 9622 5040  
Fax: 9622 2800**

**Email: [northam.physio@westnet.com.au](mailto:northam.physio@westnet.com.au)**



## News Straight from the Broomstick

Well another busy couple of months at the wildlife centre. We have 6 joeys in care at the moment with 4 of these "specials needs" babies. One little Western Grey joey wandered into a house on Brookton Highway about 20kms from town and the owners were able to pick her up and keep her safe until they could contact us to pick her up. This sweet little girl whose name is Jonay is only 9 months old and well and truly too young to be away from her mum. She was covered in mites, under nourished and dehydrated so she must have been away from her mum for some time. She was incredibly lucky to have survived with foxes, wild dogs, eagles and vehicles that could have harmed her. This remarkable little roo lived against all odds and she luckily chose the right place to go into. These wonderful people helped her and I am very grateful for this. Jonay has come a long way in the last few weeks, she loves her bottles and the security of her pouch. She is finally starting to gain weight, condition and confidence. She still has bad turns but these are decreasing so I expect her to make a full recovery. She didn't like the cydectin we had to use to treat her mites but she felt better after I am sure.

We also have taken in a joey from Pingelly that we named Amy. She was with a young woman who did not know where to go to get help for her and kept her for a few days without anything including water. Little Amy was one of the most stressed, freaked out joeys I have ever seen, all she did for the first month was curl up like a cat in her pouch and I had a real struggle to feed her. She has improved so much now that she will hop around the house out of her pouch and she also takes her bottle quite well. This little girl made me realise that not everyone knows where to go to get help for injured and orphaned wildlife and if it had not been for a post on Facebook this little joey would have died. We are trying to get a Facebook page up and running to coordinate wildlife carers in our areas to try and reach people who find wildlife so similar situations do not happen. Amy will not be able to go back to the wild and will join my mob when she is ready.

In care at the moment we also have an Elegant Parrot which has an injured leg and was unable to find food so nearly starved, luckily she was found by a member of the public and this young female will make a full recovery.

I also have a Burtons Legless Lizard that was hit by a whipper snipper and hopefully it will respond to treatment and survive its injuries. We have a reptile heat rock for it to keep warm but apparently they will only eat live skinks which I don't think I will be able to provide because I like Skinks. I will probably take it to a specialist reptile carer for its best chance of survival. I can be contacted for Wildlife help anytime. Phone Phyllis on 0437 483 175 or 9646 1469.



### Avondale presence at the Beverley Agricultural Show

A team of awesome volunteers prepared and presented a display for the annual Beverley Agricultural Show. Congratulations on a fantastic effort from the Agricultural Society, and more specifically our volunteers. It was a wonderful day and fun to see Robbie and Dakota interacting with the visitors, Ron Waterhouse scale models of vintage agricultural machinery, vintage tractors from the museum and the really comprehensive photo display.

Congratulations to the raffle winners Paul Broun and Oscar Cooke.

### Group Visits

Avondale continues to attract group visits, and we are very thankful to the volunteers who help out with these groups when required. Also, to the lessee who maintains good communication with the National Trust, and works his farming program around the other activities happening at Avondale.

### Stomp for the Stables

Registrations are coming in and the event is shaping up to be another classic. Many thanks to our very important sponsors:

- **Bendigo Bank York Branch**
- **Government of Western Australia** – Funding provided by the Road Safety Community Grants Program, which is funded through speed and red light cameras
- **Beverley Supermarket and Liquor**

Registration form available on page 8 of this issue of the Beverley Blarney. Join in and help with conservation of the unique Avondale stables complex. Meet the Clydesdale horses, and visit the other attractions available at Avondale.

### "Slow down and enjoy the ride"

### Clydesdales

Since his busy time in the lead up to and at the Beverley Show Comet seems content to chill out in the paddock with Robbie. The farrier visited to tidy up their feet, and the feed in the paddock continues to grow. Marian, Mitch and Steve continue to monitor the wellbeing of the two horses. Many thanks to them.

### Machinery Museum Volunteers

At the recent busybee the volunteers managed to, among other things

- retrieve the diesel pump from the yabbie ponds, cleaned it up and are now ready to take it apart and investigate the problems!
- Take the seized clutch off the Cletrac tractor for some modification
- Pump up some tyres
- Tighten the pre-heater on the Lanz tractor
- Enjoy some morning tea
- Comment on a collection of items to assist the York Residency museum in deciding the future of some stored items

### Additional thank-you's

Chris Mann for willingly taking on the challenge of some sign writing, when no-one else was game to have a go!

Duayne Haeusler for some wheat to assist with keeping the Avondale emus supplied.

Dina Barrett-Lennard  
Community Liaison Officer - Avondale Farm  
beverleywa.com/avondale  
08 9646 1004  
dina.blennard@ntwa.com.au



## NWAT A CPGAKAE OT ISUT UYO? EW PKSEA OYUR UNGLAAGE.

Ethewhr uyo anwt xifilliebt, ricpe ro oduprct nertctaiy, PSCB nca ilotar a Arkmet Ferofo ot uist ouyr ednes. Ot infd tou orme, uiqz uryo calol eaar nagmaer ro lsase getna ro umjp toon [ua.cpsb.moc-ertilfisers](http://ua.cpsb.moc-ertilfisers)



If you notice a change in the size, shape or feel of your breast, redness or dimpling, **tell your doctor**

A lump isn't the only sign of breast cancer  
More info at [www.findcancerearly.com.au](http://www.findcancerearly.com.au)



### KARRADALE LIVESTOCK TRANSPORT YORK LIVESTOCK TRANSPORT

ABN 64 054 007 721

We service Beverley, Brookton, York  
& surrounding districts

Available to transport Sheep & Cattle

No job too big or small

Support the local communities

Member of ALRTA

If you need stock moved, Peter would love to  
hear from you - 0428 481 281



## Busy Bush Bees

**WESTDALE**

For your supplies of  
Honey, Honey-comb and Wax



Contact  
Anna or Joe



96471126  
0411608042

LOCALLY PRODUCED  
WESTDALE HONEY  
From the from the Westdale Red Gum Forests

Our honey is available from  
Beverley Bakery  
Beverley Station Gallery  
Beverley Tourist Bureau  
Gull Roadhouse, Brookton

Or contact Anna or Joe on 0411 608 042





MAKES MORE POSSIBLE.



## Finding Breast Cancer Early!

Throughout the Wheatbelt Region of WA, the *Find Cancer Early* Campaign is urging people to pay attention to changes in their body and if they notice differences that may be symptoms of cancer, to tell their Doctor.

This month we're focusing on the common signs and symptoms of breast cancer:

- **A lump, lumpiness or thickening in the breast or armpit**
- **Dimpling, puckering or redness of the skin**
- **Changes to the nipple (e.g. inversion, new discharge or itchy, ulcerated skin)**
- **New persistent (long lasting) pain**

An area that feels different from the rest. If you have had any of these signs or symptoms, tell your doctor. It doesn't mean you've got breast cancer – usually they turn out to be something less serious. But it's important to tell your doctor and get them checked.

*Remember, if it is breast cancer, the earlier it's found, the earlier it can be treated.*

### Breast Cancer Myths and Facts

**Myth:** Age doesn't matter when it comes to breast cancer.

**Fact:** 3 out of 4 breast cancers are found in women over 50.

**Myth:** Breast cancer always runs in the family.

**Fact:** Most women who develop breast cancer do not have a family history of the disease.

**Myth:** I don't have a lump so it can't be breast cancer.

**Fact:** A lump isn't the only symptom of breast cancer. There are other important breast changes to look out for.

**Myth:** My breasts have always felt lumpy so I don't need to tell my doctor.

**Fact:** It is important to tell your doctor about any unusual lumps, regardless of how long you've had them for.

**Myth:** Breast lumps have to be painful for it to be cancer.

**Fact:** Breast lumps do not have to be painful to be cancer, so tell your doctor about any unusual lumps you find.



**BRIAN WOOLCOCK**

Elders Rural & Residential Specialist

For your complete Real Estate Service in all aspects of rural and residential properties

Brian has over 30 years experience throughout the district and offers a wealth of knowledge and total commitment.



MAKES MORE POSSIBLE.

Office located at:  
125 Avon Terrace, York  
Ph: 08 96411 587  
Mobile: 0417 184 785  
brian.woolcock@elders.com.au



**NOEL MORTON**

Elders Livestock & Wool Agent

When it comes to reliability in servicing your livestock and wool requirements.

Noel has a wealth of knowledge and experience that is vital in getting the best results.



MAKES MORE POSSIBLE.

Office located at:  
117 Vincent Street, Beverley  
Ph: 08 9646 1008  
Mobile: 0439 185 497  
noel.morton@elders.com.au

## GREAT SOUTHERN GALLERY

**Fine Timber Furniture (custom made on-site)**  
**Art, Pottery, Glass, Gifts**

***Sale on Now!***

**Open: Fridays, Saturdays & Sundays**  
**10am to 4pm**

**Located 1727 Great Southern Hwy**  
**(York to Chidlow Rd) Approx 20 mins (30kms)**  
**from York**

**Phone: 0438 196 371**

[www.greatsoutherngallery.com.au](http://www.greatsoutherngallery.com.au)

## CSBP Market Offers

Whether you want flexibility, price or product certainty this season, CSBP can tailor the right mix of offers, products and services to suit you.

### Flexibility

#### Fertiliser Sales Agreement (FSA)

Make informed fertiliser decisions with an FSA. By signing up, you pay the market price when you collect your fertiliser order. You have the choice to move some or all of your fertiliser tonnes into other offers now or anytime throughout the season.

**By providing us with your fertiliser forecast before 31 October you will also benefit from CSBP's exclusive Nutrition Services Rebate and Nutrient Assurance.**

**Combine your FSA with a Pay Now, Collect Later offer**

**Fertiliser Sales Agreement and Pay Now, Collect Later**

Secure your fertiliser with a PNCL and make payment upfront when you order. Pick up your products one of the collection windows and receive free storage.

### Nutrition Services Rebate

Improve your fertiliser decisions during the year with NALogic.

By signing up to an FSA you benefit from accruing a \$5 per tonne credit toward the cost of your CSBP NALogic Soil and Plant Analysis kits.

### Nutrient Assurance

As a FSA customer you have priority and the assurance that the CSBP products or the comparable nutrient tonnes you have forecast will be available to you for collection or delivery.

### Price certainty

#### Set Price Contract

A Set Price Contract allows you to secure price at the time of the order plus gives certainty your product will be available when you need it.

Commit part or all of your fertiliser order at a specific price and simply pick up within the chosen month and pay on collection.

### Product certainty

#### Supply Contract

Commit to and secure a fixed amount of fertiliser and benefit from a variable price dependent on market conditions. Delay payment until time of collection.

**Don't forget to speak to your local area manager about your fertiliser requirements.**

**For more details on our range of offers visit [csbp-fertilisers.com.au/marketoffers](http://csbp-fertilisers.com.au/marketoffers)**

2013/14

## WANT A PACKAGE TO SUIT YOU? WE SPEAK YOUR LANGUAGE.

Whether you want flexibility, price or product certainty, CSBP can tailor a Market Offer to suit your needs. To find out more, quiz your local area manager or sales agent or jump onto [csbp-fertilisers.com.au](http://csbp-fertilisers.com.au)



St. Mary's Anglican Rose Show - Friday 18 October 2013, Opening at 12.30pm



- ☐ A change in the size, shape or feel of your breast
  - ☐ A new lump or thickening in one breast or armpit
  - ☐ Puckering, dimpling or redness of the skin
  - ☐ Changes in the position of the nipple, or nipple discharge
  - ☐ New pain or discomfort that is only on one side

For more information

[www.findcancerearly.com.au](http://www.findcancerearly.com.au)

Or you can talk with your local

*Find Cancer Early*

Project Officer:

**Karen Hansen |**  
Wheatbelt Region Cancer Council  
Western Australia  
**T: +61 8 9690 1746**  
**F: +61 8 9690 1601**  
**Email: [khansen@cancerwa.asn.au](mailto:khansen@cancerwa.asn.au)**

## *Avon Rose* Mescal's Window From the Past

*Mescal's Window from the Past* has lots of antiques and collectables, great gifts and dolls and teddy bears.

*Old Doll and Bear Repairs a speciality!*

**Plus**

You can enjoy a great coffee and delectable food at

*Avon Rose Tearooms*

*"a great experience in tranquil surroundings"*

**Open**

*Thursday to Saturday from 10 am to 4 pm*

*Sunday from 11 am to 4 pm*

*119 Vincent St - Opposite the IGA*

*Maryann 0406 586 200*

*Mescal 0400 194 238*







## Country Women's Association Beverley Branch

This has been a very busy month for members. Two of us attended a food handling course conducted by the Salvation Army and CWA members were invited to take the course as we would work together in an emergency or crisis.

We all enjoyed the wonderful weather and organization at the Beverley Show which I believe was a record for attendance and what a wonderful day weather-wise. Our Branch extends congratulations to our Treasurer, Teresa Reid, who is also President of the Beverley Agricultural Society and her committee. Teresa also invited Mrs Sara Kenny, the new State President of CWA to Officially Open the Beverley Show. This was a great honour as it is the first engagement of its kind for Mrs. Kenny in the 90<sup>th</sup> year of CWA of WA.

On 2<sup>nd</sup> September, CWA hosted a meeting of the Campervan and Motor Home Club who will be spending the long weekend from Thursday 26<sup>th</sup> September to Sunday 29<sup>th</sup>. Local coordinators met and discussed logistics for the smooth running of the weekend.

Beverley CWA members will serve Devonshire Teas at the CWA rooms on Friday 27<sup>th</sup> September from 10.00am and again in the afternoon. Our members will again serve Devonshire Teas at the oval in the new Amenities building on Sunday 29<sup>th</sup> September from 10.00am until 2.30pm CWA will be conducting a raffle over the weekend and the winning tickets will be drawn at 2.30pm on Sunday. Winners will be notified personally where possible and will be announced at the Oval and in the next issue of the Beverley Bulletin Board and the next issue of the Beverley Blarney

Two of our members attended Jennacubbine CWA to help celebrate the 80<sup>th</sup> Birthday of their Branch. It was a very interesting day. The new State President of CWA of WA, Mrs. Sarah Kenny, addressed group with her usual dynamic manner. The Shire President of Goomalling and his wife were present.

The early history of the Branch was read by Mrs Ellie Eaton who then was presented with a certificate acknowledging 60 years of outstanding membership of the Country Women's Association. Mrs Beryl Lawler, who has also been an outstanding member of the Country Womens Association for 60 years, also received her 60 years membership recognition.

If you would like to join in a circle of friends and get to know the local residents – why not drop in to the CWA and meet the members and share a cup of morning tea.

Next meeting: Thursday 10<sup>th</sup> October at 10.00am for morning tea. The meeting will take us through to lunch time when we enjoy a Bring and Share light lunch and time for a chat.

## Friendly Club

Our next friendly club meeting will be held at the Alex Miles Lodge.

**Date:** Thursday 10 October 2013

**Time:** 2.00pm

**Hosts:** Country Dancers

Open to everyone.

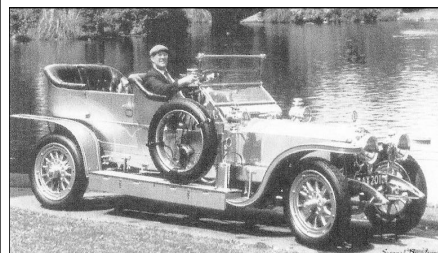
For more information  
Please contact Sylvia 9646 1072



## DRINK WISELY HOME SAFELY

COURTESY CAR AND  
DRIVER  
AVAILABLE FROM  
5.00pm UNTIL 10.00pm  
(Except Tuesdays & Thursdays)

This service is donations only.



Please book through the

Freemasons Tavern on  
9646 1094.

Donations to be placed in the  
box at the hotel.

Donations will be donated to  
charities.

(e.g. Ambulance, Hospital etc)

Female passengers using this service  
are to be accompanied by another  
adult for safety implications.

## YORK CHIROPRACTIC

MacLachlan Centre, Trews Road, York  
Clinic available every week - by appointment only.

**Tel: 9641 1500**

**Dr Alexandra [Sacha] Browne**

B.Sc [Chiro] B.Chiropractic  
Doctor of Chiropractic





## Stay active, stay independent and Stay On Your Feet®!

Seniors in Beverley are encouraged to attend a free event, the Seniors Falls Prevention Expo, on Tuesday the 8<sup>th</sup> of October 2013.

Recent research shows that one in three people over the age of 65 fall at least once a year. However, by following some simple steps, falls can be prevented.

The Expo addresses the Nine Steps To Stay On Your Feet®, which are positive steps people can take to reduce their risk of having a fall.

Date: Tuesday 8 October

Time: 10am to 2pm

Venue: Beverley Town Hall

Catering: Lunch is provided

To attend this event please RSVP by Wednesday 02 October to Sarah Dixon at Avon and Central Wheatbelt Primary Health Service on 9690 1320 or [sarah.dixon@health.wa.gov.au](mailto:sarah.dixon@health.wa.gov.au)

### Max Hunter's Firewood Supplies Ph: 96461 236

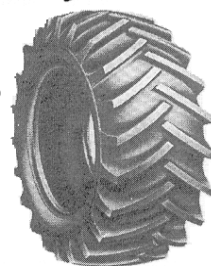


The Jarrah Bush Wood  
is sold by the tonne.  
Delivered in truck or  
trailer loads.



## BLECHY'S TYRE AND BATTERY

### City Prices



**All Major Brands**

**Second Hand**

**Batteries, Repairs, Fitting, Balancing**

Bridgestone Preferred Dealer

Ph/fax Mick on 9646 1607 or a/hrs 0400 804 045

48 Dawson St.



(Old Telecom shed)



### BILL CHAMBERS

**Chartered Accountant  
&  
Registered Tax Agent**

Tax return preparation

Financial and accounting  
advisory services

Office hours:

Wednesday

9.15am - 5.00pm

129 Vincent Street, Beverley  
9646 1566 (Monday - Friday)

# BEVERLEY BAKERY

Open Thursday to Monday from 6.00am  
Closed Tuesday & Wednesday

***Fresh Bread, Pies, Pasties and  
Salad Rolls Made Daily.***

**Gluten Free  
Cakes  
Now Available**

Phone Angie for orders  
0427 106 742



# School Ball

## Friday 15 November

**Inaugural Ball for Year 8, 9, 10 students**

**Beverley, Brookton, Quaraiding and  
Kellerberrin.**

To make this event  
possible the High School  
kids need your help!  
Donations of can be  
arranged through

Lyn Kay

0437 629 929

Proud sponsors







# Live Laugh Learn

## *Wild Women of the West 2013*

**Live** - In the end, only three things matter: how much you loved, how gently you lived, and how gracefully you let go of things not meant for you. -Buddha

**Laugh** - Do what makes you happy - Be with who makes you smile - Laugh as much as you breathe - Love as long as you live.

**Learn** - Educating yourself does not mean that you were stupid in the first place; it means that you are intelligent enough to know that there is plenty to learn. - Melanie Joy

### **GUEST SPEAKERS**

•**Keynote Speaker Sue Tindal MAICD** - Executive Director of Bankwest. Sue would be one of the most senior women in banking in Australia and also has a background in financial services, IT and energy sectors. Her journey has not been easy and she has overcome numerous obstacles including two battles with breast cancer, raised her daughter single handedly after the collapse of her first marriage, and was the subject of a major kidnap. Sue is a fascinating and inspiring speaker who would really appeal to the audience.

•A live interactive demonstration from **Famous Sharon**, her light hearted approach to life and exercise will make you laugh and smile until it hurts.

•**Vicki Olivio** cardiovascular product specialist from Johnson & Johnson - she will be addressing the issue of heart health as it is the number one killer of women in Australia.

•**Fiona Bowden**, social worker from Wheatbelt GP Network will be addressing the impact of self-talk to our daughters, friends and colleagues.

•Chef **Sophie Budd** from Taste Budd will be cooking live on stage.

**DATE:** Monday 4 November 2013

**TIME:** 8.30am - 3.00pm

**VENUE:** Beverley Town Hall

### **TICKETS ON SALE NOW**

\$40 per person, Fully catered event

**Beverley Community Resource Centre**

**Phone:** 9646 1600 **Email:** [beverley@crc.net.au](mailto:beverley@crc.net.au)

**\*\*This event is not suitable for children\*\***



# 1life



### Lyme Disease Awareness & Action" Open Garden Day

An enormous thank you to Glenys & Russell Hastings in opening their beautiful garden for us all to enjoy.

We had a lovely morning accompanied by a delicious Devonshire morning tea supplied by various members of our community.

A big thank you to those involved.

Thanks must also go to all attendees on the day.

The funds raised totalled \$1100 from entry, bring & buy & plant sales & thanks must go to all involved

in that aspect of the morning also.

The funds will be sent to the Karl McManus Foundation for research for testing & treatment of Lyme Disease.

The Foundation wishes to express their gratitude to the Beverley Community for their support & intend for a plaque to be placed on the next piece of equipment purchased recognizing the efforts of our community. This equipment will be used at the Sydney University Lyme Disease Research Unit.

A Big thank you to those who donated prizes.

The prizes were drawn & won as follows...

Garden Water Spray Hose connection.....Kaye Boyle

Windmill Weather Station.....Amor Moulton

Full Set of towels.....Anne Leeson

"Smitten Organics Hand Care Gardeners Pack.....Jess Fleay

Congratulations to all winners

& thank you to all participants.

Again thank you all so much for your generous support.

Please accept this as a personal thank you as there have been so many kind donations & support offered, it is impossible to acknowledge individually.

### VOICE OF THE AVON 101.3 FM LOCAL PROGRAMMING

#### SUNDAY

8.00 – 11.00 Sunday Morning Coming Down—John

11.00 – 12.00 Sunday Classics

12.00 – 1.00 Soul and Inspiration - Susan

1.00 – 5.00 Blues

5.00 – 9.00 Metamorphosis – Bob

#### MONDAY

7.00 – 10.00 Monday Breakfast – Bob

10.00 - 1.00 Mustang Sally – Susan

4.00 – 7.00 Celtic Note – Joe

7.00 – 10.00 Classical Sounds - Chris

#### TUESDAY

7.00 – 10.00 Mornings at Seven – Milo

10.00 – 1.00 Around The World – Leila

1.00 – 5.00 Countrywide – Wally

6.00 – 10.00 Old Guys Rock—Terry

#### WEDNESDAY

10.00 – 2.00 A Little Bit of Everything - Joe

4.00 – 7.00 Legends and Locals - Mark

7.00 – 10.00 Back to the Future – Frank

#### THURSDAY

9.00 – 12.00 Mustang Sally – Susan

12.00 – 3.00 Kaleidoscope – Chris (includes at 12.30, What's Up Doc?)

6.00 – 9.00 Rock-n'-Roll Thursday – Milo

#### FRIDAY

6.30 - 10.00 Friday Breakfast - Bob

10.00 - 1.00 Discography - Tess

1.00 - 4.00 Kornucopia - Kazza

#### SATURDAY

6.00 – 11.00 Saturday Morning Variety Show – Terry

1.00 – 6.00 Saturday Mix – Graham

6.00 – 10.00 Saturday Jazz

Station Phone Number 9641 2422

E-mail: [radio6ycr@hotmail.com](mailto:radio6ycr@hotmail.com)

Facebook.com: Voice of the Avon 101.3FM

66.5 hours of local presenters each week.

Effective 01 September 2013

WD & LM SLEEP  
**Kokeby Concrete**

**Specialising in**

Concrete, Sand pads, Bob Cat Hire, Site and Block  
Cleanup (can organise grano workers)



**P: 08 9646 4163 M: 0429 461 314**

### MENTAL HEALTH WEEK

6 - 12 October

World Mental Health Day is  
Thursday 10 October

STOP TRYING  
TO FIT IN,  
WHEN YOU  
WERE BORN  
TO STAND OUT.....

# BROOKTON PLUMBING

ABN: 37 675 595 336

**FOR ALL YOUR  
PLUMBING MAINTENANCE  
AND GAS FITTING NEEDS**

**\*PLUS SEPTIC WASTE  
REMOVAL**

**PHONE:  
SEAN 0413 480 543 or  
NATASHA 0422 013 889**

**PL: 7130 GF: 006947 SWR: T235**

## WG CEILINGS

*Specialising in:*

- Gyprock Fixing & Flushing
- Cornice Installation & Repairs
- Sagging Ceilings & Removal
- Cracks in Ceilings & Walls
- General Flushing & Repair Work

**Phone Wayne Giesemann  
0413 091 109**

**1100 copies each month**

**Beverley Blarney**



**Advertise your business  
here!**

## Lyme Disease – The Great Imitator

Lyme Disease is often referred to as the Great Imitator for its ability to look like many other illnesses, often leading to a misdiagnosis. These include:

- Fibromyalgia
- Myalgic Encephalomyelitis / Chronic Fatigue Syndrome
- Motor Neuron Disease
- Parkinson's Disease
- Sarcoidosis
- Rheumatoid Arthritis
- Multiple Sclerosis
- Autism
- Depression
- Alzheimer's Disease
- Lupus

### THE AIMS OF THE KARL MCMANUS FOUNDATION INCLUDE

1. To facilitate research and raise awareness of Lyme disease (borreliosis and co-infections) and other tick-borne diseases in Australia.
2. Advocate for better testing and treatment of borreliosis and co-infections.
3. Educate doctors and other health professionals about Lyme disease (borreliosis) and co-infections in Australia.
4. Use the media to alert the public about Lyme disease (Borreliosis) and co-infections in Australia.
5. Publicise that there is a potential to misdiagnose Lyme (Borreliosis) as many other serious chronic diseases like Parkinson's disease, motor neurone disease (MND, ALS), multiple sclerosis (MS), Alzheimer's disease, fibromyalgia and ME/chronic fatigue syndrome and autism.

### Useful links and references

1. Karl McManus Foundation – <http://www.karlmcmannusfoundation.org.au/>
2. The Lyme Disease Association of Australia – <http://lymedisease.org.au/>
3. Lyme Australia: Recognition and Awareness – <http://www.lymeaustralia.com/index.html>
4. Further background and details on the study by Russell and colleagues at Westmead Hospital – <http://www.lymeaustralia.com/health-dept-denial.html>

(Taken from the Karl McManus Foundation website)

If anyone would like to know more  
please call or ask Jeff & Wendy Murray. We would be happy to share any  
information we have with you.

**WILLS AND ENDURING  
POWERS OF ATTORNEY**  
A friendly service for York, Beverley and  
Quairading.  
John will come to your house or farm.

**JOHN MULLER <sup>LLB</sup>  
SOLICITOR**

**0419 899 779**

**Email: [mullja@bigpond.com](mailto:mullja@bigpond.com)**



# BEVERLEY PLAYGROUP

Presents

## Boogie Woogie

THURSDAY 10 OCTOBER 2013

FROM 9.30 AM

@PLAYGROUP'S ROOM

COME FOR A JIGGLING  
AND WIGGLING MORNING  
WITH MUSIC DANCING  
AND ACTIVE FUN  
FOR BABIES AND PRE-SCHOOLERS



SPECIAL FOR BEVERLEY PLAYGROUP  
PAID MEMBERS  
\$5 / FAMILY

OTHERS \$7 PER CHILD  
+ \$3 FIRST SIBLING  
+ \$1 FOLLOWING SIBLINGS  
FREE FOR SIBLINGS UNDER 1  
\$5 ONLY CHILD UNDER 6 MONTH

Proud member of



### Remote Area CONTRACTING SERVICES

Water Supply  
Windmills & Accessories  
Solar Pumps:  
Sales, Service, Installation  
Fencing & Yards  
Trenching & Polypipe Laying

Agents for:  
Mono Pumps, Ebara Pumps and  
Pressure Systems

Remote Area Contracting  
Services Pty Ltd  
PO Box 638, York WA 6302  
Tel: 9643 1047 Fax: 9643 1039

Errol Squire  
0438 682 687

Dalene Davies  
0427 021 146

### ROYAL ANTEDILUVIAN ORDER OF BUFFALOES



QUAIRADING BEVERLEY NO.163

We meet the first Wednesday of  
every month at the Masonic Lodge,  
Hunt Road, Beverley

*The objects of our order are  
Philanthropy and Good Fellowship.*

For more info contact  
Bill McDonald on 9646 0746



## **CRANA ABORIGINAL CORP. INC.**

Mal Roberts has regular contact with the three graduate students, nominated by Professor Grant Reivell of The University of Western Australia. Re: The building project on the Indigenous Reserve on Duffield Street, Beverley. This reserve happens to be on Crown Land, under the legal custodianship of the Shire of Beverley. Therefore, in the context, Mal keeps the Shire CEO Mr Steve Gollan, up to speed on a regular basis. It goes without saying here, that the indigenous people in Beverley, have an excellent working relationship with both Mr Steve Gollan and the Shire President Mrs Dee Ridgway. Prof. Grant Reivell (UWA) and his students have been made aware of these facts.

To cite a summary of an email we received from UWA. They are seeking more historical information, on the late residents that lived on the reserve, including the names of children. Other information: how many people lived in tents, around the dwellings, what was the original landscape, fencing and the properties of the Avon River, in those early years. So far, only Mitch Henry and Jesse Ugle can offer some links with the past.

Any indigenous person or family member, who, may be able to help out, with relevant information, which will be used, to honour and respect the late habitants please contact Mal Roberts on 9646 1932 or call into the office, Town Hall, Beverley.

*(Personal comments from Mal)*

LEGAL ADVICE: Though I hold a Graduated Degree (ECU) in Indigenous Management; though a number of units touched on the Australian Legal Framework and Aboriginal Customary Law, I do not offer legal advice, but offer advise to Indigenous People in this region, as my background goes back with my association with them, going on 30 years. Advice means nothing, unless you earn their trust & respect. I feel privileged to say I have done so. When one represents indigenous people, understanding their culture showing them dignity & respect is key and they rightly deserve. I learn each day more about Aboriginal culture, and it is this learning that helps me with my role.

Mal G Roberts                      Mitch Henry  
Adviser/Manager                  President

## **BEVERLEY PARALEGAL REFERRAL COMMUNITY INFORMATION SERVICE (BCS)**

REFERRALS: The following matters were referred for legal advice and action

TO: Legal Practitioners, Police, Doctors, Accountants, Government Departments and Members of Parliament.

FAMILY COURT: Divorce, Property settlement, Children custody and visitation rights.

Prisoners rights and legal representation, Perth (dangerous driving) impounding of a motor cycle, speeding (find experienced lawyer), unpaid fines and infringements, motor vehicle accidents, insurance claims.

Early release of Superannuation on financial hardship grounds plus Centrelink requirements and forms.

Immigration and Tax office - New passport forms, ID requirements.

Due to family breakdowns, separation, divorce, some get very emotional and these cases are referred to our local GP for medical assessment. All phone appointments and referrals are made strictly with the authority of the parties concerned.

WITNESSING LEGAL & OTHER DOCUMENTS AS A JUSTICE OF THE PEACE. Recently I have noticed a CHANGE in the passport forms i.e. Apart from your 100% ID in addition you must produce :

- Your rent receipt or a copy of your Shire rates plus
- Electricity account (copy)

Divorce applications, one witness has to ID one party in my presence, and I, in addition to the other ID documents, must sight and witness a recent photograph, of the person making the Sworn Affidavit in my presence.

Superannuation release forms. Some super managers recent for ALL documents

to be Signature Witnessed in black ink, others want me to sign in blue ink. All Court Documents must be signed and witnessed in black ink.

LEGAL ADVICE - I regularly have to stress, that I do NOT offer Legal Advice e.g. After 6 years study, I was awarded a Bachelor of Arts Justice Studies degree from Edith Cowen University, though, 22 of the 26 units were based on Law & Justice, I still cannot pass an opinion on Legal Advice. Almost everyday, in the office or by phone calls at home, I have been asked for advice and I decline to do so and suggest that the caller seeks legal advice from a Law Firm OR the Community Legal Centre in Northam.

### **IMPORTANT CHANGES TO THE LAWS**

If there are NO money transactions in savings account, in banks and other financial institutions, FOR MORE THAN TWO YEARS, that, amount of money will revert to the Government. Please verify this with your banks.

### **FINES AND INFRINGEMENTS**

All monies owing over \$2,000, if not negotiated, will lead to:

- a. The Police can put clamps on a vehicle, and remove the number plates.
- b. Sell the vehicle or other property?  
(Through a court order.)

Please phone this Department regarding the new laws.

In a recent MRO case: was dismissed by the Northam Court - insufficient evidence: I feel otherwise and DO NOT agree. I have taken legal advice and if the matter re-occurs, I will file proceedings and this time, my lawyers will represent me and take it to trial and go for costs.

For Christmas food parcels/hampers for those persons in need, please phone Sylvia Seddon on 9646 1072 by November 2013.

Mal G. Roberts

## ***Mews Electrical Service*** **Lothar Mews** Electrical Contractor

Lic. No. 000797

PO Box 429  
Beverley WA 6304

Ph/ fax: 08 9646 1918  
Mob: 0419 851 934





# Beverley District High School

Hello and welcome to our news. Sport has been a big part of our school, our community and of course the excitement of the Dockers finally playing off in a grand final. (Yours truly has waited a long time for this). Students have worked very hard this term in the classroom even though the dreaded flu has caused some staff and students to miss school. Just a reminder, if possible, please keep your sick children at home as it is very hard for them to concentrate on their work when they are sick.

Mrs Wansbrough’s class have been “playing” with balloons as they learn how to write procedures. Enjoy and read the article below.

## Balloon Rockets

Goal: To make a rocket balloon fly

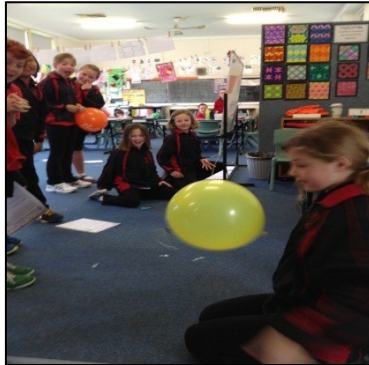
### Materials:

- 2 metre piece of string
- 1 balloon
- Sticky tape
- Scissors
- 1 drinking straw
- 1 paperclip
- Leg of a desk

### Steps:

1. Get in a group of 2 or 3 and find a clear space to work.
2. Choose a manager.
3. Get the manager to collect the supplies.
4. Thread the string through the straw.
5. Blow up the balloon.
6. Now put the paperclip on the end of the balloon.
7. Tape the balloon to the straw.
8. Push the balloon and straw to the end of the string.
9. Last, but not least, let it go and watch it take off.

I really loved making a balloon rocket. (Lilli Kennedy)



### Year 3

Over the past month our class has been learning about procedure writing. We undertook a Science experiment called “Balloon Rockets”. After the experiment we had to write up a procedure.



**Faction Sports** – These were held on our town oval on Friday 30<sup>th</sup> August on what proved to be a very challenging day with students and staff dodging showers all day. In fact the relays had to be run the following Monday.

<b>Outright Faction Winner</b>	<b>Dale</b>	594.5
<b>Runner Up</b>	<b>Forrest</b>	518.5
<b>Third</b>	<b>Eyre</b>	427

Boys Championship Winners		Girls Championship Winners	
6 Years Runner Up	<b>Matthew Bowden</b> <b>Jayne Thomas</b>	6 Years Runner Up-Equal	<b>Alice Stevens</b> <b>Leah Morrell</b> <b>Shirley Quartermaine</b>
7 Years Runner Up	<b>Nathan Styles</b> <b>Thomas Mellick</b>	7 Years Runner Up	<b>Grace McLean</b> <b>Ella Cooke</b>
8 Years Runner Up	<b>Aaron Schilling</b> <b>Seth Longo</b>	8 Years Runner Up	<b>Mackenzie Thomas</b> <b>Rebekah Aynsley</b>
9 Years Runner Up	<b>Declan Kilpatrick</b> <b>Mitchell Ashworth</b>	9 Years Runner Up	<b>Alexandra Tita</b> <b>Stevie Grossmith</b>
10 Years Runner Up	<b>Samuel McLean</b> <b>Joshua Styles</b>	10 Years Runner Up	<b>Isabelle Ochtman</b> <b>Grace Fisher</b>
11 Years-Equal Runner Up	<b>Callum Overington</b> <b>Antwon Ugle</b> <b>Joe Byworth</b>	11 Years Runner Up	<b>Stella Wilkinson</b>  <b>Hannah Bowden</b>
12 Years Runner Up	<b>Kelvin Quartermaine</b> <b>Thomas McLean</b>	12 Years Runner Up	<b>Georgina Fisher</b> <b>Evie Wilkinson</b>
13 Years Runner Up	<b>Jake Tilbee</b> <b>Travis Hayman</b>	13 Years Runner Up-Equal	<b>Zoe Bennett</b> <b>Jessica Appelbee</b> <b>Vernette McKelvie</b>
1500 Metres Boys		1500 Metres Girls	
Winner Runner Up	<b>Mac Doughty-Munro</b> <b>Cameron Grover</b>	Winner Runner Up	<b>Vernette McKelvie</b> <b>Zoe Bennett</b>
800 Metres Boys		800 Metres Girls	
Winner Runner Up	<b>Thomas McLean</b> <b>Lachlan McLean</b>	Winner Runner Up	<b>Jiselle Hammond</b> <b>Georgina Fisher</b>

**Interschool Sports** – This carnival was held on Friday 13<sup>th</sup> September in Brookton. Our cream of the cream students participated in this and the successful competitors are listed below. Well done to all students who represented Beverley. You all did Beverley proud.

<b>Outright Town Winner</b> (Primary)	Brookton	308 pts
<b>Runner Up</b>	Pingelly	274 pts
<b>Third</b>	Beverley	227 pts
<b>Fourth</b>	York	215 pts
<b>Outright Town Winner</b> (Secondary)	York	258 pts
<b>Runner Up</b>	Brookton	167 pts
<b>Third</b>	Beverley	76 pts

Boys Results		Girls Results	
8 Years and Under <b>Bronze</b>	<b>Aaron Schilling</b>	8 Years and Under <b>Gold</b> <b>Bronze</b>	<b>Mackenzie Thomas</b> <b>Rebekah Aynsley</b>
10 Years and Under <b>Bronze</b>	<b>Declan Kilpatrick</b>	10 Years and Under <b>Bronze</b>	<b>Jiselle Hammond</b>
12 Years and Under <b>Gold</b>	<b>Kelvin Quartermaine</b>		
Primary 13 Years <b>Bronze</b>	<b>Mac Doughty-Munro</b>		
13/14 Years <b>Gold</b>	<b>Jake Tilbee</b>		
15+ Years <b>Bronze</b>	<b>Travis Hayman</b>		
Primary Boys 800m <b>Gold</b>	<b>Thomas McLean</b>		

We hope you all have a refreshing holiday with your children and please stay safe wherever you are.

Staff will be going back to school on Monday 14<sup>th</sup> October and students will be returning on **Tuesday 15<sup>th</sup> October**.

Sera Minchin



**WESTERN AUSTRALIAN PHILATELIC COUNCIL**

# **SWAN RIVER STAMP SHOW**

**A State Level Exhibition with a 'Court of Honour'**

**19<sup>th</sup> & 20<sup>th</sup> October 2013**

**Saturday 10.00am – 5.00pm**

**Sunday 10.00am – 4.00pm**

**University of Western Australia  
Guild Function Centre  
Hackett Drive, Crawley**

**ENQUIRIES - John Dibiase** E: [john\\_dibiase@yahoo.com](mailto:john_dibiase@yahoo.com)

**PROSPECTUS - Ross Wood** E: [rwood27@csc.com.au](mailto:rwood27@csc.com.au)

**SOUVENIRS** E: [stafford@southwest.com.au](mailto:stafford@southwest.com.au)

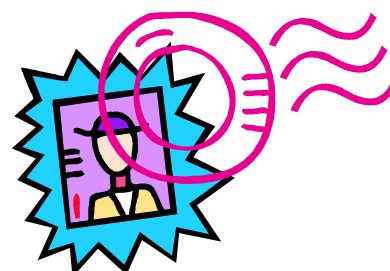
**PROSPECTUS** <http://swanriverstampshow.com>

**Dealers, free valuations, activities for Juniors  
Auction at 2.00pm each day**

## **CATALOGUES**

**Saturday:** E: [rosswood@bigpond.com](mailto:rosswood@bigpond.com)

**Sunday:** Mike Kouwen (08) 9384 4981





# **Beverley Police Golf Day**

**Four Person Ambrose — Ladies, Men's or Mixed**

**Saturday, October 5th 2013**

**Beverley Golf Club, Forrest Street, Beverley**

**Registration:** 10am    **Tee-off:** 11am    **Cost:** \$30

This includes green fees, light lunch, evening meal and chance to win heaps of prizes!

## **PRIZES**

\* Novelties \* Raffles \* Auction \*

To register contact Beverley Police Station on (08) 9646 3333 or email  
[beverley.police.station@police.wa.gov.au](mailto:beverley.police.station@police.wa.gov.au) or [darrell.hagan@police.wa.gov.au](mailto:darrell.hagan@police.wa.gov.au)

Proceeds to WA Police Legacy and Beverley Golf Club

**Thank you!**

# **Proudly Sponsored by Beverley Bakery**





# York Dental Surgery

Now located at the York Wellness Centre (Old Primary School) 6 Howick St York

**Opening Hours: Mon, Tues, Wed: 8.30am – 4.30pm Thurs: 8.30am- 12noon**

Dental surgeon Dr John Fenn has provided comprehensive dental care in York for over eighteen years.

With forty years of dental experience you can be assured of a professional high quality service as well as providing friendly and gentle patient care.

Come in and see John, Sue and Julie. Experience our new rooms and the benefits of friendly, gentle and proficient dental care.

To arrange an appointment please phone: 9641 2925 or email: [yorkdental@westnet.com.au](mailto:yorkdental@westnet.com.au)

Follow us on: [www.facebook.com/yorkdentalWA](http://www.facebook.com/yorkdentalWA)

## PRIMARY HEALTH SERVICES available to the community of Beverley

You can refer yourself or your child to the following health professionals:

- **Child Health Nurse** - Phone 9646 3200 to make an appointment, Hospital Admin Staff will assist you in setting an appointment time (attendance Fridays).
- **Child / School Health** – Phone 9646 1210
- **Dietetics** – Phone 9690 1320
- **Occupational Therapy** – Phone 0429 466 224
- **Physiotherapy** – a **Doctors referral is required** – Please send to PO Box 142, Beverley or drop referral to the Beverley Hospital (attendance Thursdays)
- **Podiatry** – a **Doctors referral is required** – Please send to PO Box 142, Beverley or drop referral to the Beverley Hospital (attendance Fridays) \*\*
- **Social Work** – Phone 9690 1320
- **Speech Pathology** – Phone 9690 1321

\* Services are provided at the Primary Health Building, on the corner of John and Forrest Streets, Beverley. There may be a waiting time for services.

\* These services are provided by WA Country Health Service and are free of charge. (Please note that the Podiatry Service is a private practice and is not free of charge - there is a fee at first consultation but the WACHS/Beverley Health Service do not get involved in taking fee payments – only assisting at receiving the referrals for appointment. The Doctor's referrals are usually faxed to the service provider, Como Podiatry, who contact the patient by phone and make an appointment).

\* If you have any concerns about your own health or your child's health and development, please phone the relevant health professional to discuss your concerns. Alternatively, you can speak to the Child Health or School Health Nurse, or your GP, to discuss your concerns and to determine the most appropriate referral.

Avon & Central Primary Health – Promoting Healthy Lifestyles

**I THINK SOMETIMES  
YOU FORGET THAT  
YOU WERE BORN TO  
BE AWESOME.  
(HERE'S YOUR REMINDER)**



## CARPET & LOUNGE SUITE CLEANING

*It's Spring Cleaning Time!*

- \* Carpets Cleaned
- \* Lounge Suites Cleaned Like New
- \* Car Upholstery & Carpets Cleaned
- \* House Total Clean When Moving
- \* Fire & Water Damage Clean Up

- \* Stripping & Sealing Floors
- \* Vinyl
- \* Wood
- \* Slate

Phone Colin Today on  
0417 971 786

Email [colgrant1@bigpond.com](mailto:colgrant1@bigpond.com)





# brooktonhounds

A COUNTRY RETREAT FOR YOUR BEST FRIEND

## Brookton Hounds Pet Boarding:

- ✿ Wide open spaces    ✿ Huge enclosures
- ✿ Family run business    ✿ Fresh country air

Contact Murray and Liz on:

t (08) 9642 1875    m 0409 103 166

[www.brooktonhounds.com.au](http://www.brooktonhounds.com.au)



## Ben Dewar

### Repairs To:

- Earth Moving
- Trucks
- Heavy Plant
- General Welding
- Agriculture

Mobile Boilermaker

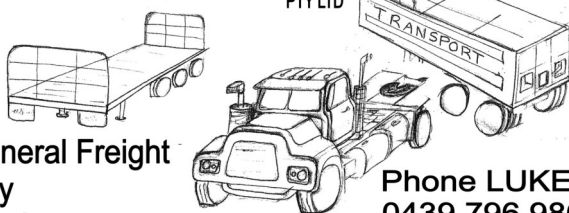
0428 461 207

[ben.dewar@bigpond.com](mailto:ben.dewar@bigpond.com)



# M & L GROSSMITH

PTY LTD



- \* General Freight
- \* Hay
- \* Wool
- \* Sand Gravel
- \* Bulk Grains & Fertiliser

Phone LUKE  
0439 796 986  
9646 1983  
PO Box 342  
Beverley WA

## Beverley Youth Centre

Beverley Youth Centre runs every Friday night between 6pm to 10pm and is for 10 year olds to youth.



Any enquiries please contact Youth Group Coordinator  
**Lyn Kay on**  
**0411 355 811**

### BRIDGE - Card Game

If you would like to come along and enjoy a game of bridge. We welcome all new members to join us.  
WHEN: Mondays TIME: 1.00pm WHERE: CWA Hall



DON'T FORGET  
BLARNEY DEADLINE for the  
NOVEMBER edition  
Wednesday 23 October at 4pm




## BEVERLEY ELECTRICAL SERVICES

Servicing Beverley, Quairading and Brookton

For all your Electrical & Solar needs  
Please call

## KARL SMITH

## 0429 887 535

PO Box 2 Beverley WA 6304

Email [sales@beverleyelectrical.com.au](mailto:sales@beverleyelectrical.com.au)

EC 006578

ABN 86 966 138 620

## RIDGWAY CONTRACTING

*Contract Spraying or Spreading*

Licence Number 1680

PHONE: MARK: 0428464056

TRENT: 0488226525

## 7000Lt      100ft

## Hydraboom

Auto Shutoff

Auto Steer

FlexiN Application

High application rates available  
Guidance (GPS)

## 8Tonne Multispreader

GPS Guidance





# BEVERLEY PLAYGROUP'S NEWS

Now that we have finished the mural for the Beverley Show back in August, we haven't been as busy. None the less, we still had a few activities, like Fathers' Day at the end of August. It was a beautiful morning. A few Dads came over for a cuppa and the children did special hand and foot prints for them. Story/Rhyme was pretty busy and we really enjoyed it. Thank you so much Jo for kindly reading to us! Just before the school holidays we will have our general meeting and a busy bee the following day. So we should start in October with squeaky clean toys and cupboards.

We are open during holidays, and on Thursday 10th October we have a very special event in store: the Boogie Roos!! Boogie Roos is an 'Award Winning', lively & interactive, action packed musical and movement activity group for babies, toddlers & kindys... The hour long session is BURSTING with lots of high energy music, singing, dancing, vibrant props, puppets to meet & greet and free play. This is usually followed by some extremely happy, tired Roos ready for their morning/afternoon nap!! So to make it even more special, the session will cost to Beverley's Playgroup paid members, ONLY \$5 / family (see ad for other fees). We really hope to see a lot of babies and toddlers and if we get enough interest from the community, it is even possible to make it a regular event!!

We will finish the month with Story/Rhyme time session with Alexis Goddard as our guest reader.

Remember that we accept new members all year long. To be fair for new members, the membership fee drops for the last term. The exact amount will be confirmed by our committee. See you at Playgroup!!

## Session Details

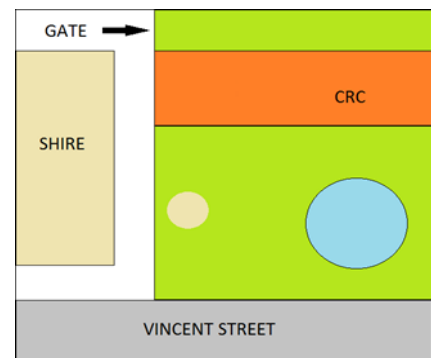
**Every Thursday morning from 9.30 am to 11.30 (open for school holidays)**

Bring a piece a fruit to share, hat and sunscreen.

\$2 per family per week

(for coffee/tea, crafts, toys etc...)

\$30/\$15 (concession) membership fee for the year per family (covers insurance, membership to Playgroup WA, invitation to regional events etc...)



Proud member of



**Playgroup**  
WA (Inc)



## Beverley RSL Sub Branch

People who attended the Anzac Day services in Beverley in April this year may remember the Kiwi contingent who joined in our ceremonies.

These guests were members of the Colonials Motorcycle Club who based themselves in Beverley the day before and actively involved themselves in setting up the RSL Hall for the Gunfire Breakfast.

Bob Seddon assisted in ensuring that our Kiwi cousins were kept entertained on the night before Anzac Day, which led to his being nominated for the rare distinction of Honorary Member of the Colonials Motorcycle Club.

On September 8<sup>th</sup> Oxo from the Colonials Motorcycle Club (who attended our ANZAC Day) and some of his fellow members held an installation ceremony for Bob Seddon.



At the Freemasons Tavern Beverley. Oxo presented Bob with his own Club Colours and made him an Honorary Club member.

The Colonials fondly remember their Anzac celebrations in Beverley and hope to return in greater numbers to join in our celebrations next year. We are sure Beverley and especially Bob, will make them most welcome.

*Pictured above right: Bob Seddon and the Colonial Motorcycle Club at the Freeman's Tavern.*



# THE BLUE LINE

## Beverley Police Station

57 Hunt Road, Beverley WA 6304

**Hello Everyone,**

This is my first Blarney and I feel immensely proud in being in a position to write it. I suppose therefore it would be a good idea to introduce myself! For those who haven't met me yet, my name is Ian Connell and I arrived in town a few weeks ago with my wife Jane, dog Ollie and what seemed like every packing box in Western Australia. As you may or may not have noticed I'm not originally from around these parts, I can't think what gives that away, the accent maybe ?????!!!!!! Anyway, what are you getting ? Well, I've been a Police Officer for 24 years, 17 of which were in Lancashire Constabulary in the North West of England and the last 7 here in WA. I've worked in various positions in WA, Midland-Perth-Mundaring-Perth (again)-Midland (again) and now the beautiful town of Beverley.

Whilst I was born and raised in a large town in England (Wigan) I lived for most of my life in the village of Eccleston which is very rural and not dissimilar to Beverley in many respects. I therefore understand what challenges await me in a rural community such as Beverley but as I mentioned during my interview, I consider myself first and foremost to be a concerned and committed member of the Beverley community. What affects you affects me. I am passionate about community life and feel that we all have to work together in order to make sure that Beverley continues to be a safe and happy place to live. It's good to talk so don't be shy, I'm not and I don't know if you've noticed neither is the other Ian !

So to wrap up my introductions I'd like to thank all those whom I've met already for welcoming myself and Jane into your community with such kindness and genuine friendliness. It certainly has helped us to settle down in our first few weeks.

Before I continue any further I would like to thank Darrell for his last few years of dedicated service to the people and town of Beverley, I've certainly got big boots to fill. Also, a huge thanks goes out to Karen Berry for giving me a walk up start in my new career as OIC at Beverley.

And so to the last few weeks of policing life in Beverley.....whilst it can be said it hasn't been as busy as where I've just come from, Midland, the fact that the town is much smaller and looked after by 2 of us and not the many as is the case down the hill, we have been relatively busy. There have been a number of domestic issues which have taken up portions of our time but hopefully with the co-operation of all parties and our advice and guidance these have been dealt with satisfactorily. Unfortunately though there has been a rise in criminal offences, namely a number of stealings. This is unacceptable. We are gathering intelligence and evidence against those responsible and hopefully by the next Blarney we will have some good news regarding this issue. I don't know about you but I reckon stealing from each other is about as low as it gets and should be frowned upon by everyone.

Myself and Ian won't be working traditional shift rosters as we'll be mixing up our start times a fair bit so for anyone out there who thinks we only work day shifts, think again.....

OK, enough doom and gloom (I don't reckon there was that much anyway), there's another very pressing matter and this one relates directly to the both of us ; our accents. You may have noticed that we speak very very similarly and use strange words and pronunciations. Occasionally I can't understand a word Ian says and I'm sure it's vice versa. To address this I'll give you a few phrases we both use and what they actually mean in English so if you hear us say them you'll at least have some idea of what on earth we are going on about :-

*Klemt* – means “we are very hungry”. It's actually worse than starving. If you hear us use this phrase, get us a pie, quick.

*Mither* – Means “to bother, annoy”. Probably the best use of this is the “e-mither”. That's the electronic version of the *mither*.

*Put wood int thole* – Means “please close the door”. We say that a lot, we are sensitive creatures.

And lastly, one you may hear us say whilst we are out and about working; *Narthenwoartdoin*. A prize to anyone who can 1. Pronounce it and 2. Tell us what it means.

In conclusion, I look forward to meeting many more of you over the coming weeks and would ask only one thing of everyone, if you see something, hear something or something concerns you, speak to us, we're good listeners and if nothing else, like I said before, it's good to talk.

Stay safe, look after each other and let's keep Beverley the beautiful place it is.

All the very best,

The 2 Ians.

PS – We're both going on a bit of a health kick during October as we feel like these 2 at the moment (although if we complain of being *klemt* you now know what to do) :-



[beverley.police.station@police.wa.gov.au](mailto:beverley.police.station@police.wa.gov.au)

Ph: 9646 3333



**Western Australian Wyandotte Fancier's Association Inc. - 21st Annual Show Results**  
**Held in Beverley WA on Saturday 7 September 2013**

Category	Trophy/Award Sponsor	Winner
Best large Wyandotte - white hen	Beverley Supermarket and Liquor Store	Michael & Daniel Osborne - Cuballing
Best large laced, silver or golden - silver laced pullet	Beverley Dome and Fuel	Kaylene Watts - Mundaring
Best large pencilled - silver pencilled hen	Glen Forrest Stockfeeds	Kaylene Watts - Mundaring
Best large buff or any other colour - AOC hen	Beverley Licenced Post Office	Michael & Daniel Osborne - Cuballing
Best bantam Wyandotte - partridge hen	Graham and Sue Ireland - Kellerberrin	Bevan and Gaenor Cater - Beverley
Best white Wyandotte large or bantam - large white hen	Laucke Mills - South Australia	Michael & Daniel Osborne - Cuballing
Best black or blue Wyandotte bantam - black hen	Norm Reynolds Retravisoin - York	Lindsay Rowley - Narrogin
Best reserve black or blue bantam - black cock	Kaylene Watts - Mundaring	Lindsay Rowley - Narrogin
Best brown/red or Columbian bantam - brown/red cock	Freemason's Tavern - Beverley	Lindsay Rowley - Narrogin
Best crele or cuckoo bantam - cuckoo cock	Laucke Mills - South Australia	Lindsay Rowley - Narrogin
Best pencilled bantam - partridge hen	York Health Pharmacy	Bevan and Gaenor Cater - Beverley
Best reserve pencilled bantam - partridge cock	York Co-op, IGA	Bevan and Gaenor Cater - Beverley
Best silver laced or any other colour bantam-silver laced cockerel	Laucke Mills - South Australia	Lindsay Rowley - Narrogin
Best white Wyandotte Bantam - white hen	Hotel Beverley	Owen Gath - Cuballing
Champion in single breeding class, large or bantam. Large silver pencilled cockerel breeding hen	Mark and Denise Dunn - Oakford	Michael & Daniel Osborne - Cuballing
Best breeding pair bantam - any pencilled colour	Laucke Mills - South Australia	Owen Gath - Cuballing
Best exhibition pair - white	Owen Gath - Cuballing	Owen Gath - Cuballing
Best reserve bird in show - partridge bantam hen	York Community Bendigo Bank	Bevan and Gaenor Cater - Beverley
Best bird in show - large white cock	Narrogin Motel	Michael & Daniel Osborne - Cuballing
Most points in show	Glen Forrest Stockfeeders	Lindsay Rowley - Narrogin

Silk ribbon donated and presented by the members of the Wyandotte Club of Tasmania Inc. for the Champion Bird in Show. Michael and Daniel Osborne of Cuballing were the proud recipients. Also compliments of the Victoria Wyandotte Club who are celebrating their 50th show a medal was given.

Best reserve bird in show also received a medal from the Victoria Wyandotte Club.

On behalf of the Western Australian Wyandotte Fanciers Association, would like to say Thank you for your sponsorship of the prizes to our 21st Annual Show. With your generous support we were able to offer excellent prizes. These prizes continue to help attract exhibitors and make our show popular.

Next year, the Wyandotte show will again be held in Beverley.  
 Thank You once again and we look forward to your continued support.  
 Show Coordinators - Gaenor Carter and Kaylene Watts.



#### BEVERLEY HISTORICAL SOCIETY

The September meeting of the Society was attended by eight members with two apologies.

With the Beverley Show just over, we were pleased with the reception of our *"Living in the Country means Playing Sport"* display in the Exhibition Shed. People spent time looking at the old photos and sporting equipment we presented. Thanks must go to all those who provided **photos and information** on some of our more recent sporting history such as Glenys Petchell (Netball), Jenifer Petchell (Pony Club), and Gaenor Carter (Swimming). Also Mary Blechynden and Norma Wansborough for the loan of tennis and football photos and John Hawke who loaned an old racing cycle. The display has been relocated to the Dead Finish Museum and can still be viewed there if you missed out at the Show.

The location of *"Rockdale Farm"* (the childhood home of our enquirer's mother) has been researched this month. After pursuing 'red herrings' out in the Dale, the old farmstead has been found in West Pingelly.

The York Society has kindly provided a digital version of the **1859 York Census**. Every family living in Beverley & York at the time has a double page spread as below:

*RETURN of the Number of Persons who Slept on the Premises of John Self in the year 1859. To be filled up by the Head of the Family who were in the District of the said John Self.*

No.	Name	Sex	Age	Married	Religion	Occupation	Place of Birth	Place of Birth of Mother	Place of Birth of Father
1	John Self	M	40	Married	Anglican	Farmer	W. of York	W. of York	W. of York
2	Mary Self	F	35	Married	Anglican	Housewife	W. of York	W. of York	W. of York
3	Elizabeth Self	F	10	Single	Anglican	Schoolgirl	W. of York	W. of York	W. of York
4	James Self	M	8	Single	Anglican	Schoolboy	W. of York	W. of York	W. of York
5	John Self	M	16	Single	Anglican	Farmer	W. of York	W. of York	W. of York
6	Mary Self	F	14	Single	Anglican	Housewife	W. of York	W. of York	W. of York
7	Elizabeth Self	F	12	Single	Anglican	Schoolgirl	W. of York	W. of York	W. of York
8	James Self	M	10	Single	Anglican	Schoolboy	W. of York	W. of York	W. of York
9	John Self	M	8	Single	Anglican	Schoolboy	W. of York	W. of York	W. of York
10	Mary Self	F	6	Single	Anglican	Schoolgirl	W. of York	W. of York	W. of York
11	Elizabeth Self	F	4	Single	Anglican	Schoolgirl	W. of York	W. of York	W. of York
12	James Self	M	2	Single	Anglican	Schoolboy	W. of York	W. of York	W. of York

Interested persons may view these pages at the Dead Finish Museum.

Other **donations** to the Museum included:

- Beverley Airfield Documents from the RAAF History Section provided by the Soaring Society.
- Family Trees of Charles Smith and the Blechynden family.

**Next meeting: AGM 21 October 2013 2pm.** All welcome. For further information contact the secretary at [bhsdeadfinish@gmail.com](mailto:bhsdeadfinish@gmail.com).

## Christmas Lights Competition

Christmas is coming...  
It's time to start planning your Christmas Light display to be in the running to win prizes.

The competition is open to all residents and businesses in the Beverley community.



### TEEDE'S AUTO ELECTRICS

Auto electrical & Air-conditioning Repairs  
(AU09431)

*Guy Teede*

Unit 5,  
Lot 466 Brookton Highway,  
Brookton WA 6306

Mobile: 0428 721 986  
Phone: (08) 9642 2333  
Fax: (08) 9642 2344







**Anglican Parish Beverley/Brookton**  
**Times for Sunday Services for:**  
**October 2013**



DAY	DATE	CHURCH LOCATION	TIME		SERVICE
			AM	PM	
Sunday	06 Oct	St Mark's Brookton	8.30am		Holy Communion
Sunday	06 Oct	St. Mary's Beverley	10.30am		Holy Communion
Sunday	06 Oct	St. John in the Wilderness	10.30am		Prayer, Praise & Proclamation
Sunday	13 Oct	St. Mark's Brookton	8.30am		Morning Prayer
<b>**Sunday</b>	13 Oct	St. Mary's Beverley	8.30am		Prayer, Praise & Proclamation
Sunday	20 Oct	St. Mark's Brookton	8.30am		Holy Communion
Sunday	20 Oct	St. Mary's Beverley	10.30am		Holy Communion
Sunday	27 Oct	St. Mark's Brookton	8.30am		Morning Prayer
<b>**Sunday</b>	27 Oct	St. Mary's Beverley	8.30am		Prayer, Praise & Proclamation
Sunday	03 Nov	St. Mark's Brookton	8.30am		Holy Communion
Sunday	03 Nov	St. John in the Wilderness	10.30am		Holy Communion



**CATHOLIC CHURCH**

Service in Beverley  
 8:00 am every Sunday at  
 Beverley Sacred Heart Church  
 Lukin Street, Beverley

**THE RELIGIOUS  
 SOCIETY OF FRIENDS  
 (QUAKERS)**

Beverley Friends Meeting  
 Old Catholic School Rooms  
 Dempster Street

**Sunday 10:30am -**  
 Meeting for Worship

For more information & enquiries  
 phone 9646 0575.



**\*\*Please note time change**

Parish telephone is: 9646 1112  
 Correspondence to: PO Box 292, Beverley WA 6304  
 All Mail for St Mary's Society, please address to:  
**PO Box 292, Beverley WA 6304**

**BEVERLEY HOME  
 CHURCH**

Beverley Home Church  
 Meets on the 1<sup>st</sup> and 3<sup>rd</sup>  
 Saturday of each month.

We welcome all to share in  
 Christ Centred Fellowship  
 with Terry and Glenda.

At 4.00 pm closing with a  
 fellowship meal

At 16 Barnsley Street,  
 Beverley

Enquiries – call 9646 0546



**The Church of  
 United Spiritualism of Australia**

**Schedule of Services for 2013**  
**Healing at 2.30 pm and the Service commences 3.00 pm**

Jan 13<sup>th</sup>  
 Feb 10<sup>th</sup>  
 Mar 10<sup>th</sup>  
 Apr 14<sup>th</sup>

May 12<sup>th</sup>  
 July 14<sup>th</sup>  
 Aug 11<sup>th</sup>  
 Sept 08<sup>th</sup>

Oct 13<sup>th</sup>  
 Nov 10<sup>th</sup>  
 Dec 08<sup>th</sup>

**Please contact Rev Irene on 9646 0470 for details of venue as this may vary.**

## BEVERLEY HOSPITAL AUXILIARY OP SHOP

Donated, clean clothing is very much appreciated. No electrical appliances, underwear or bathers accepted. Donated items may be left at Avon Trading please.

The Op Shop is open every Friday between 2:00pm and 4:00pm.

### OP SHOP ROSTER OCTOBER 2013

Oct 04 Anne Szczenski, Glenys Lane,  
Joyce Ridgway  
Oct 11 Amanda McLean, Helen  
Bremner, Sera Minchin  
Oct 18 Leita Barrett-Lennard, Jan  
Howell, Mary Blechyden  
Oct 25 Ingrid Bell, Rhonda Seymour,  
Gracie Courtney  
Nov 01 Val Moad, Kate Badger,  
Ailsa Elston

Val Moad  
Hon. Secretary



## BEVERLEY DIABETES SUPPORT GROUP

Meets at the O.T. Room, Beverley Hospital  
WHEN: 2.00pm til 4.00pm

The support group will meet every second Tuesday of the month.  
Contact Sylvia Seddon on 9646 1072

Type one and two diabetics of all ages are encouraged to attend as well as other members of the public interested or suffering from diabetes. Please park on the road or behind the St John Ambulance Centre.

## BEVERLEY CHILD HEALTH CLINIC

Clinic is open Fridays for appointments, home visits and/or immunisations 9am to 4pm



For appointments or enquiries please phone the hospital on 9646 3200 or 0427 901 321.

LISA WAY — Child Health Nurse



## Keep your child protected during winter

Winter is a time for sniffles, coughs, ear infections, tummy bugs, fevers and other minor illnesses. It is important however to make sure that children continue to be immunised on time. A child with a minor illness can safely be vaccinated. The only reasons that should delay/prevent immunisation are a high fever (> 38.5 degrees Celsius) and/or a history of severe allergic reaction to a previous vaccine or part of the vaccine.

If you have any questions, please contact your local immunisation provider, your GP, or ring the Wheatbelt Public Health nurse on 9622 4320.

## MEALS ON WHEELS ROSTER FOR October 2013

Sept 30 **Public Holiday**

Oct 01 R McCallum/ W Gilbert  
Oct 02 D Strange / E Boyle  
Oct 03 A Elston / J Van Tiel  
Oct 04 K & P Smith

Oct 07 P Williamson/ K Morgan  
Oct 08 B Sims/ D Ormerod  
Oct 09 M. Alford / to be filled  
Oct 10 B & J Howell  
Oct 11 D. & E. White

Oct 14 K Morgan ( ND) / K Badger  
Oct 15 S. & M Morton  
Oct 16 To be filled  
Oct 17 J Islip / T Valli  
Oct 18 A & K Boyle

Oct 21 B Wauchope / G Redding  
Oct 22 J. Johnson / M. Smith  
Oct 23 A. Elston / G. Roache  
Oct 24 C. Tee / K. Morgan  
Oct 25 J. Van Tiel/to be filled

Oct 28 B. Foster / J Islip  
Oct 29 R McCallum / W. Gilbert.  
Oct 30 D. Strange / E. Boyle  
Oct 31 B & J. Howell  
Nov 1 D & E White

## C & B SOUTHERN RUN TRANSPORT

DELIVERING TO: BEVERLEY, BROOKTON, PINGELLY  
MONDAY, WEDNESDAY AND FRIDAY.

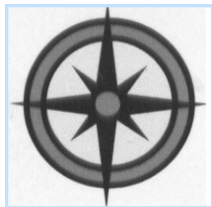
DELIVERY OF GENERAL FREIGHT, AND CHILLER GOODS  
FROM CANNINGVALE MARKETS DEPO.

**PLEASE CONTACT PAUL BALDWIN ON  
0417 953 968 OR AH 08 9646 0461.**

Big enough to do the job, small enough to care.



All types



All areas

## ALLROUND CONCRETE

SHED FLOORS, DRIVEWAYS, FOOTPATHS, HOUSE SLABS,  
SILO PADS, FERTILIZER/GRAIN/SUPA SHEDS

**ROBBIE HIGGINSON**

**MOBILE: 0427 384 977**

**HOME: 9641 2459 FAX: 9641 2339**

**ABN: 26 997 512 874**

**PO BOX 345 YORK WA 6302**

## BEVERLEY TRANSPORT SERVICE

Your local carrier for over 30 years.

**GRAIN, FERTILISER, LIME, HAY, WOOL AND  
GENERAL TRANSPORT**

**Agents for  
Optima Agriculture  
Supply and cart of Lime products**

**Garry & Sarah Miller  
Ph: 9646 4066 or 0428 464 066  
miller@reachnet.com.au**

## Natway Furniture & Constructions

**ABN: 62 824 726 465**

**Wayne & Natalie  
Ashworth**

Qualified  
Carpenter & Joiner  
Tradesman

- General Building Work
- Furniture Construction  
& Restoration

27 Brooking Street,  
Beverley

**Phone:  
08 9646 0159**

Mobile: 0417 973 415  
(Wayne)

Mobile: 0429 491 039  
(Natalie)

For all your air conditioning needs  
contact:-

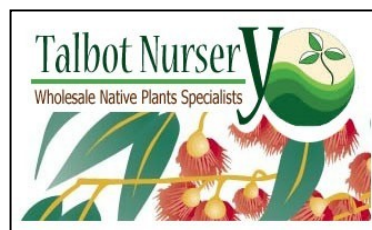
**Robert & Nathan Chamberlain**

### Avon Auto Air

**Phone: 08 9647 2070**

**Mobile: 0428 472070**

We are now accredited and  
registered to install and commission **Split  
System Air conditioners.**



**Your Beverley Nursery**  
Native seedlings for revegetation,  
bush foods and plantations.

- ✓ Our website is now fully  
operational - order on line!
- ✓ Tree guards and fertiliser pills
- ✓ Tree planting service available

E-mail: [sales@talbotnursery.com.au](mailto:sales@talbotnursery.com.au)  
or phone/fax Lisa on 9646 1716.

# BEVERLEY NETBALL CLUB

The 2013 season is now over.

Pingelly Green Machines and Pingelly Blue Lagoons fought it out for the premiership on Saturday 7 September at the Beverley Town courts, with Pingelly Blue Lagoons being the eventual winners.

We had our windup & AGM on the Saturday 14 September at the York Mill as Ballet Dancers and Minions (from "Despicable Me 2")

Awards winners for 2013 are:

Overall Fairest & Best: Kelly Jenkin

Donated by Beverley Steel Fabrication

Runner up Overall Fairest & Best: Claire Thomas

Donated Anonymously

Beverley Hunters Fairest & Best: Kelly Jenkin

Donated Anonymously

Beverley Hunters Most Consistent: Kelly Jenkin

Donated by Beverley IGA & Anonymously

Beverley Spinners Fairest & Best: Claire Thomas

Donated by Hotel Beverley

Beverley Spinners Most Consistent: Claire Thomas

Donated by Hotel Beverley

Best Club Person: Nat Ashworth

As voted by the members.

2014 Committee is:

President: Nat Ashworth

Vice President: Amor Moulton

Secretary: Jodie Bell

Treasurer: Jen Petchell

Recorder: Linda Troy

Non-playing Rep: Glenys Petchell

Committee: Jo Copping, Kayla Ware and Tayla Harding



2013  
Netball  
Wind up

*Above: The Hunters  
as Ballerina's  
Left: The Spinner's as  
Despicable Me 2*



## BEVERLEY BOWLING CLUB

### 2013/2014

## SEASON OPENING MIXED SOCIAL BOWLS

### SUNDAY 6th OCTOBER

### NAMES IN BY 1PM START TIME 1.30 PM

### ALL WELCOME

### DRESS - WHITES

### MEMBERS

### PLEASE BRING A PLATE OF SAVOURIES FOR AFTER THE GAME

### Thank You





### Featured Events:

7:30pm, Friday 25<sup>th</sup> October

Beverley Football Club

### **Annual General Meeting**

at the Beverley Amenities Building.

Football season is over for another year, and although we didn't quite achieve the desired result we set out for, at least we got the opportunity to be involved in the grand occasion on Grand Final day.

The Beverley Football Club would like to sincerely thank all our players, members, sponsors, supporters and volunteers who have once again contributed to making our Club so successful this season.

The Beverley Football Club invites all Members to attend our Annual General Meeting, which will be held on Friday 25<sup>th</sup> October at the Beverley Amenities Building commencing at 7:30pm.

### Avon Hockey Association Round 14 (24<sup>th</sup> August 2013) – Beverley (bye)

### AFA 1<sup>st</sup> Semi Final (25<sup>th</sup> August 2013) at Quairading

<u>LEAGUE</u>	1 <sup>st</sup>	2 <sup>nd</sup>	3 <sup>rd</sup>	4 <sup>th</sup>	Points
Cunderdin	4.5	8.9	12.16	17.19	121
Railways	1.2	6.4	11.5	14.7	91

Margin: 30 points

<u>RESERVES</u>	1 <sup>st</sup>	2 <sup>nd</sup>	3 <sup>rd</sup>	4 <sup>th</sup>	Points
York	2.4	7.7	12.8	14.12	96
Federals	2.1	4.3	9.5	11.6	72

Margin: 24 points

<u>NETBALL</u>	
Beverley	58
York	43

Margin: 15 goals

**Best:** Beverley Bec Altus.

### Avon Hockey Association 1<sup>st</sup> Semi Final (31<sup>st</sup> August 2013) at Northam

York Vipers	4
Beverley	0

Margin: 4 goals

### AFA 2<sup>nd</sup> Semi Final (1<sup>st</sup> September 2013) at Kellerberrin

<u>LEAGUE</u>	1 <sup>st</sup>	2 <sup>nd</sup>	3 <sup>rd</sup>	4 <sup>th</sup>	Points
Keller/Tammin	2.5	4.8	8.10	10.13	73
Beverley	0.2	2.8	6.9	7.14	56

Margin: 17 points

**Goals:** Beverley James Turner 2; James Murray 2; Josh Keen 1; Scott Tomlinson 1.

**Best:** Beverley Josh Edwards, Brendan Counsel, Matt Davey, Dean McDonald, Matt McLean, James Turner, James Adams, Justin Mann and Scott Minchin.

<u>RESERVES</u>	1 <sup>st</sup>	2 <sup>nd</sup>	3 <sup>rd</sup>	4 <sup>th</sup>	Points
Quairading	1.0	4.0	5.0	6.3	39
Cunderdin	1.5	1.8	1.15	3.17	35

Margin: 4 points

### NETBALL

Federals	56
Quairading	36

Margin: 20 goals

### AFA Preliminary Final (8<sup>th</sup> September 2013) at Northam

<u>LEAGUE</u>	1 <sup>st</sup>	2 <sup>nd</sup>	3 <sup>rd</sup>	4 <sup>th</sup>	Points
Beverley	4.2	6.6	13.9	15.13	103
Cunderdin	2.2	4.9	10.10	12.12	84

Margin: 19 points

**Goals:** Beverley Taine Wilson 5; James Turner 2; Josh Keen 2; Ben Ireland 2; James Murray 2; Dale Wansbrough 1; Ben Parkes 1.

**Best:** Beverley James Turner, Matt McLean, Robbie Wansbrough, James Adams, Charlie Horrocks, Scott Minchin and Taine Wilson.

<u>RESERVES</u>	1 <sup>st</sup>	2 <sup>nd</sup>	3 <sup>rd</sup>	4 <sup>th</sup>	Points
York	1.2	2.7	5.7	7.8	50
Cunderdin	4.1	4.3	6.5	6.6	42

Margin: 8 points

### NETBALL

Beverley	55
Quairading	34

Margin: 21 goals

**Best:** Beverley Sarah Owens.

### AFA Grand Final (15<sup>th</sup> September 2013) at Beverley

<u>LEAGUE</u>	1 <sup>st</sup>	2 <sup>nd</sup>	3 <sup>rd</sup>	4 <sup>th</sup>	Points
Keller/Tammin	1.1	5.8	8.11	11.13	79
Beverley	2.7	3.10	6.12	9.14	68

Margin: 11 points

### **Goals:**

**Kellerberrin/Tammin:** Chris Maguire 5; Lewis Henry 3; Bevan Bennell 3.

**Beverley:** James Turner 2; James Murray 2; Taine Wilson 1; Dale Wansbrough 1; Josh Keen 1; Ben Ireland 1; Scott Tomlinson 1.

### **Best:**

**Kellerberrin/Tammin** -Chris Shawcross, Mitch Innes, Alex Leake and Anthony Hansen.

**Beverley** Ben Parkes, James Adams, James Turner, Matt Davey, Robbie Wansbrough, Dale Wansbrough, Owen Heasman, Scott Tomlinson, Matt McLean and Justin Mann.

### **Ken Baxter Medallist – Chris Shawcross (Kellerberrin/Tammin)**

<u>RESERVES</u>	1 <sup>st</sup>	2 <sup>nd</sup>	3 <sup>rd</sup>	4 <sup>th</sup>	Points
York	2.2	5.3	7.5	11.8	74
Quairading	2.4	3.6	5.8	5.8	38

Margin: 36 points

### **Ian McNeil Medallist – Marshall Jones (York)**

### NETBALL

Federals	60
Beverley	51

Margin: 9 goals

### **Best:**

**Federals** Sinead Spencer.

**Beverley** Gemma Ridgway, Sarah Owens, Bec Altus and Narelle Bailey.

### **Most Valuable Player – Sinead Spencer (Federals)**

### CON DEBLECOURT CUP Final Points

East Avon	10.8	68
Avon	4.5	29
Margin:	39	points

### **Best:**

**East Avon** Lachlan Gelmi (Quairading),

Mitchell Henry (Tammin), Lachlan McLean (Beverley), Kelvin Quartermaine (Beverley), Thomas McLean (Beverley), Callum Overington (Beverley) Tim Appelbee (Beverley) and Monty Woods (Beverley).

**Coach:** Brendan McLean (Beverley)

**Avon** Liam Henry.

**Fairest & Best Player – Mitchell Henry (Tammin)**

#### **LEAGUE LEADING GOALKICKER**

<b>Player</b>	<b>Goals</b>
<b>James Murray (Beverley)</b>	<b>90</b>
Leon Davis (Railways)	80
<b>Taine Wilson (Beverley)</b>	<b>38</b>
<b>Josh Keen (Beverley)</b>	<b>34</b>
Scott Edmonds (Federals)	30

#### **RESERVES LEADING GOALKICKER**

<b>Player</b>	<b>Goals</b>
Desmond Williams (Quairading)	54
<b>Gavin Farmer (Beverley)</b>	<b>37</b>
Greg Scarlett (Cunderdin)	31
David Slater (Federals)	24

Congratulations to the following players on their individual honors for the 2013 Season:

#### **2013 AVON FOOTBALL ASSOCIATION AWARDS**

3<sup>rd</sup> place **League** Fairest & Best  
Scott Tomlinson  
(Beverley Football Club)

#### **League**

Leading Goalkicker – James Murray  
(Beverley Football Club) (83 goals)

#### **League**

Minor Premiers – Beverley Football Club  
Bendigo Bank

#### **League**

Rising-Star Player – James Adams  
(Beverley Football Club)  
RadioWest Baxters Rural Runner-up

#### **League**

“Player of the Year” – James Turner  
(Beverley Football Club)

3<sup>rd</sup> place **Reserves** Fairest & Best  
Damien Murray  
(Beverley Football Club)

**Netball** Fairest & Best – Narelle Bailey  
(Beverley Redbacks)

#### **2013 AVON HOCKEY ASSOCIATION AWARDS**

Avon Hockey Association

#### **A Grade**

Runner-up Fairest & Best

Fiona Bowden

(Beverley Redbacks Hockey Club)

#### **2013 BEVERLEY FOOTBALL CLUB LEAGUE AWARDS**

Fairest & Best (Springdell Medal)

*donated by Lew & Sandy Shaw*

Joshua Keen, 83 votes from 13 games

Runner-up Fairest & Best

*donated by Mark & Glenys Petchell*

Scott Tomlinson, 66 votes from 14 games

Most Consistent Player

Stuart Murray

Coach's Award

*donated by*

*Rick & Lorna Barrett-Lennard*

James Adams

'Warky' Ugle Memorial Leading  
Goalkicker

James Murray, 83 goals from 14 games

“Player of the Finals”

*donated by David & Gina Adams*

Justin Mann

#### **2013 BEVERLEY FOOTBALL CLUB**

#### **RESERVES AWARDS**

Fairest & Best

(R.A. McLean & Co Trophy)

*donated by Brendan & Mandy McLean  
and Wayde & Kathryn McLean*

Damien Murray, 88 votes from 14 games

Runner-up Fairest & Best

(B.M. Minchin & Sons Trophy)

*donated by Mrs. Avis Minchin*

Brett Jeffery, 82 votes from 14 games

Best 1<sup>st</sup> Year Player

*Sponsored by Beverley Bed & Breakfast*  
Aubrey Ahern

Coach's Award – Daniel Bailey

#### **2013 BEVERLEY REDBACKS NETBALL AWARDS**

Most Consistent

Kira Strange

Runner-up Most Consistent

Gemma Ridgway

Most Valuable Player

Narelle Bailey

#### **2013 BEVERLEY REDBACKS HOCKEY AWARDS**

Fairest & Best

Fiona Bowden

Runner-up Fairest & Best

Kelly Mann

Most Consistent

Kathryn McLean

Most Improved

Emily Miller

Coach's Award

Tori Jamieson

#### **Congratulations to:**

\* Dominic Tee, who celebrated his 18<sup>th</sup>  
birthday on Thursday 12<sup>th</sup> September;

\* Justin Mann, who was awarded best  
afield for Beverley by representatives of  
the Perth Football Club in the League  
Grand Final against Kellerberrin/  
Tammin on Sunday 15 September.

#### **Thank you to:**

The Beverley Golf Club, who hosted our  
Presentation Dinner on Saturday 21<sup>st</sup>  
September.

#### **Coming up:**

7:30pm, Friday 25<sup>th</sup> October  
Beverley Football Club: AGM  
Beverley Amenities Building.

A reminder to all players, members,  
sponsors and supporters that you can  
now view all the latest news and events  
from the Beverley Redbacks by checking  
out our Facebook page at:

[http://www.facebook.com/  
beverley.footballclub?fref=ts](http://www.facebook.com/beverley.footballclub?fref=ts)

To keep you informed and up to date on  
the all the latest news and events from  
the Beverley Football Club, simply  
register your email address with us at  
[beverleyfc@bigpond.com](mailto:beverleyfc@bigpond.com) and we'll add  
you to our mailing list.

**See you at the footy!!!**



# Beverley Men's Golf



**Elders Day** (formally Willey's and O'Meara) 3 Person Ambrose was held on Friday 30 August. 33 players participated in the day in cold conditions.

A great day was had by all who played and with novelties on all holes, everyone had a chance of winning a prize.

At the end of the day the eventual winners were Mark Edwards, Mike Cartlew and Paul Burns with a nett score of 60.00. They were followed by John Donovan, John Starling and Fred Bremner with a nett score of 63.67. The Best Gross Team score was Paul Broun, Terry Winfield and Rob DeGruchy with 71.

It was very pleasing to see many new players and old players come to play this event and use the facilities at the club, as it set the scene for a very enjoyable evening listening about the great shots and the unlucky shots during the day.

Thanks are extended to **Noel Morton** and his crew for sponsoring the day.

Warm conditions greeted 11 players on Saturday 31 August, for the Hidden Partner event sponsored by **Peter Wansbrough Trophy**. The day was a Stableford event with a draw at the end of the day to find out who your partner was. The day was also for the September Monthly Mug.

Stephen Gollan won the Monthly Mug on a countback with a score of 36 points from Bruce Kilpatrick and Wayde McLean who had 35 points each.

After the draw for hidden partners was completed, Stephen Gollan and John Donovan were declared the winning pair with 68 points. Thanks to **Peter Wansbrough** for sponsoring this event.

Friday 6<sup>th</sup> September saw 18 players play in the **2013 Open Teams Ambrose** event.

It was very pleasing to see past member in Stuart McLean back at the club enjoying himself.

The Gross winners on the day were the team comprising of Mark Edwards, Ron Milligan and Brett Coxon with a score of 69 (3 under). Brett Hutchinson, Greg Barrett-Lennard and Stuart McLean were Runners Up with 70.

The Nett winners were Wayde McLean, Bruce Kilpatrick and Stephen Gollan with a nett score of 61.00. The Runners Up were Terry Winfield, John Donovan and Chris Pepper with a 64.00 nett score.

Ideal golfing conditions greeted a field of 45 players on day one of the **2013 Open Teams Championships**.

The format of the event is three players in a team. Each individual plays 18 holes of stroke on both Saturday and Sunday and combined scores of the team over the two days are tallied to find the winning team.

At the end of day one everyone was very happy to be inside socialising and talking about what went wrong on the course during their rounds. A very nice roast chicken meal was had while watching the AFL Semi Final game between Collingwood and Port Adelaide.

Mark Bickley shot the best nett score of the day with 66 points.

The best Gross score on the day was Tony Peck from the Chequers Golf Club with 74 (2 over). Mark Edwards was the best placed Beverley player in the gross section with 80.

With conditions once again ideal on Sunday, some very good scores were recorded. Bruce Kilpatrick shot a great nett score of 63. Gordon Riggir from the Chequers Golf Club also had very good round shooting 66 nett points.

In the Gross, Michael Griffiths (Mandurah) and Geoff Mouritzen (Chequers) had a good day being only 6 over to a record gross score of 78 each. Paul Woolstencroft (Chequers) and Mark Edwards also had good rounds of 79.

Once all the scores were tallied and checked the following winners for the event were announced.

Gross Winning Team	Chequers 1 – Tony Peck, Paul Woolstencroft, Geoff Mouritzen – 481
Gross Runner Up Team	Composite 2 – Mark Edwards, Peter Edwards, Ron Milligan - 522
Gross Third Team	Chequers 2 – Len Richards, Gordon Riggir, Greg Scott – 526
Nett Winning Team	Composite 1 – Michael Griffiths, Jason Young, Glen Chester – 429
Nett Runner up Team	Beverley 2 – Wayde McLean, Bruce Kilpatrick, Stephen Gollan – 444
Nett Third Team	Beverley 1 – Mark Bickley, Darrell Hagan, Ben Moulton - 446
Individual Gross Winner	Michael Griffiths – 154 (Mandurah)
Individual Gross Runner Up	Paul Woolstencroft – 156 (Chequers)
Individual Nett Winner	Gordon Riggir – 135 (Chequers)
Individual Nett Runner up	Peter (Dipper) Edwards – 137 (Mandurah)
Saturday Gross Winner	Tony Peck (Chequers)
Saturday Nett Winner	Mark Bickley
Sunday Gross Winner	Geoff Mouritzen
Sunday Nett Winner	Bruce Kilpatrick
Best Vet (55 & over)	Chris Pepper

The Club would like to thank the following sponsors and those people who helped in any way to make it a successful event.

Twinkarri, Contract Aquatic Services, Valley Ford Northam, Purslowe Tinetti Funerals, WFI, ANZ Bank, Fly's R Gone, Fred Sing,

Mia Davies, Terry and Sandy Woods, Passive Energy Systems, Dirt N Boondies, Summit Fertilizer, Mark and Margie Young, Beverley Transport, Steve Gowland, Beverley Country Kitchen.

In fine conditions on Saturday 14 September the **Beverley Electrical Services** trophy was played for.

11 players participated in this Stableford event, in which John Donovan won the day with 35 points from Stephen Gollan with 34 points. Thanks to **Karl Smith** and **Beverley Electrical Services** for putting the day on.

One of the biggest golfing events on the Beverley golfing calendar was held on Saturday 21 September, being the **President vs. Captain Day** sponsored by **Cedric Smith** and **Bert Wansbrough**.

Prior to hit off teams were selected.

*The President's team* consisted of Stephen Gollan, Mark Edwards, Bruce Kilpatrick, Gavin Sazanov, Mark Bickley, John Starling and Mel Vivian.

*The Captain's team* was John Donovan, John Islip, Chris Pepper, Mark Armstrong, David Kennedy, Les Annison and Graeme Lewis.

Bruce Kilpatrick and Graeme Lewis had a day out and shot a tremendous nett score of 66 to tie for first place. A countback was then held and Bruce Kilpatrick was declared the winner. Mark Edwards and John Donovan also played well to finish with 68 and 69 nett points respectively. Terry Winfield had the best gross score with 76 (4 over).

Even though we were all happy to see Bruce and Graeme have such a good score, it was not about the individual's score, it was about the team. With the Captain (John Donovan) under extreme scrutiny while totalling the cards, he produced the goods to again, see the President's Team victorious for the second year in a row with 526 nett points and the Captain's Team with 528 nett points.

Thanks are extended to **Cedric Smith** and **Bert Wansbrough** for sponsoring the day.

#### October

Friday 4<sup>th</sup> Night Golf

Saturday 5<sup>th</sup> **CLOSING DAY – BEVERLEY POLICE DAY 4 Person Ambrose**

Commencing at 10:00am

Monday 7<sup>th</sup> Country Week Commences

Friday 11<sup>th</sup> Country Week Finishes

#### November

Saturday 2<sup>nd</sup> DRGA CLOSING DAY – SERPENTINE 2 Person Ambrose

Commences 8:30am

#### December

Sunday 1<sup>st</sup> Gordon Riggir's Christmas Day – Chequers 4 Person Ambrose

## NEED PRACTICAL TRADE ASSISTANCE?

### *D & M Services*

(Design and Manufacturing Services)

Solving a range of practical needs and problems..

#### Specialising in:

- ✓ Kitchen renovations
- ✓ Shop fitting and modifications
- ✓ Furniture restoration
- ✓ General carpentry
- ✓ Alterations & installations
- ✓ Metal based fabrication
- ✓ Motorhome and Caravan fitouts
- ✓ Pergolas, Decks & Gazebos
- ✓ Designing and planning

**Guy Slingerland**

**0403602335**

**Don't let the winter months  
get the better of you and  
lose 5kg's or more in  
30 days**

**\*No Rigorous Exercise**

**\*No Calorie Counting**

**Eat the Food you love**

**\*Gain Nutrition**

**\*Medically recommended**

**\*Easy & Safe**

**\*30 Day money back guarantee\***

**It works I lost 9kgs in  
8 Weeks**

**Phone Ellen Maddock  
(Mukinbudin)  
on 0437 825 383**



# Beverley Lawn Tennis Club

Time to shake of the winter cobwebs

BECAUSE

## The 2013/2014 Tennis Season is HERE!

**OPENING DAY** is **Sunday the 13th of October 2013** . Play begins at 1:00pm with a BBQ dinner to follow.

Members please bring a salad to share.

YOUR 2013/2014 TENNIS COMMITTEE



Patron: Richard Boladeras			
President: Brett Shaw			
Vice President	Natalie Kilpatrick	Catering Co-ordinator	Jacinta Murray
Secretary	Ashe Murray	Barman	John Starling
Treasurer	Kellie Shaw	Blarney Scribe	Sally Kilpatrick
Mens Captain	Bill Cleland	Bar Manager/Greenkeeper	Rob de Gruchy
Mens Vice Captain	Graeme Lewis	Additional Bar Manager	Tim Kilpatrick
Ladies Captain	Charmaine Willing	Additional Bar Manager	Bruce Kilpatrick
Ladies Vice Captain	Wendy Ireland	Immediate Past President	Ben Murray
Mid Week Captain	Aliesha Murray	Junior Co-ordinator	Mandy Mclean
Mid Week Vice Captain	Jacinta Murray		

Thank-You to all outgoing committee members for your hard work during the 2012/2013 season.

### BUSY BEE

Let's spruce up the club! **Saturday 12th October** from 8:30am.



#### Central Districts Zone 3 Development Squads

A number of our junior members aged 7 and over are participating in the Central Districts Zone 3 Development squads as part of the junior development programme. We wish you all the best for your intensive coaching sessions.

Never played before? Keen to try? We welcome visitors and new members to our club. We have a mix of ages and abilities, so come down and have a hit. Children are most welcome.

### JUNIOR COACHING

**When:** Tuesdays for 5 weeks. Starting 22nd October week 2, Term 4.

**Coach:** Keith O'Brien

**Who:** Age 5 upwards.

Please register your interest for 4 year olds attending Kindy. If numbers and time allows 4 years may be able to participate.

**Cost:** Estimated cost is \$45-\$50 depending on final numbers.

Older children will be offered organised social tennis between the end of school and their lesson. Parents are asked to assist.

To register your child please contact **Mandy McLean on 0428464010 or mclean.ba@bigpond.com**

Please register your child by Tuesday 15th October

# Beverley Lawn Tennis Club: 2013/2014 Fixtures

All Social tennis 2pm start (except Jan) Fri night tennis dates TBA or self organise

**ALL TOURNAMENT START TIMES TO BE CONFIRMED** (see notice board for details)

Captains contact details – Bill Cleland : 0428 472 054 or 9647 2054 OR Charmaine Willing : 0427 444 407 or 9646 1052

DAY	DATE	FIXTURE	COMMENT	CAPTAIN	LOCK-UP
<b>OCTOBER</b>					
SAT	12 <sup>th</sup> Oct	Busy Bee – 8.30am			
SUN	13 <sup>th</sup> Oct	OPENING DAY – 1pm Start	Bring a salad to share. BBQ DINNER. BRING A SALAD TO SHARE	C. WILLING B. CLELAND	B. SHAW
WED	16 <sup>th</sup> Oct	Ladies Midweek Tennis		AL MURRAY	AL MURRAY
SAT	19 <sup>th</sup> Oct	Pennant Tennis			
SUN	20 <sup>th</sup> Oct	Sunday Social Tennis	Stomp for the Stables	C. WILLING	N.KILPATRICK
WED	23 <sup>rd</sup> Oct	Ladies Midweek Tennis		AL MURRAY	AL MURRAY
SAT	26 <sup>th</sup> Oct	Pennant Tennis			
SUN	27 <sup>th</sup> Oct	Sunday Social Tennis – "HAVE A GO/BRING A FRIEND DAY"	Ballet Concert	G. LEWIS	ASHE.MURRAY
WED	30 <sup>th</sup> Oct	Ladies Midweek Tennis (Cunderdin Ladies Open Day) – BYE		AL MURRAY	AL MURRAY
<b>NOVEMBER</b>					
SAT	2 <sup>nd</sup> Nov	Pennant Tennis			
SUN	3 <sup>rd</sup> Nov	VIN AND ANNE SZCZECINSKI HANDICAP MIXED DOUBLES – DRAW FOR PARTNER	NAMES DUE WED 30 <sup>th</sup> Oct BBQ DINNER. BRING A SALAD TO SHARE	C. WILLING B.CLELAND	D. AYNLEY
WED	6 <sup>th</sup> Nov	Ladies Midweek Tennis		AL MURRAY	AL MURRAY
SAT	9 <sup>th</sup> Nov	Pennant Tennis			
SUN	10 <sup>th</sup> Nov	CHAMPIONSHIP MIXED DOUBLES CHOOSE OWN PARTNER	NAMES DUE WED 6 <sup>th</sup> Nov BBQ DINNER. BRING A SALAD TO SHARE	C. WILLING B.CLELAND	B. MURRAY
WED	13 <sup>th</sup> Nov	Ladies Midweek Tennis		AL MURRAY	AL MURRAY
SAT	16 <sup>th</sup> Nov	Pennant Tennis			
SUN	17 <sup>th</sup> Nov	Sunday Social Tennis		W. IRELAND	K. SHAW
WED	20 <sup>th</sup> Nov	Ladies Midweek Tennis		AL MURRAY	AL MURRAY
SUN	24 <sup>th</sup> Nov	Sunday Social Tennis		C. WILLING	J. MURRAY
WED	27 <sup>th</sup> Nov	'BEVERLEY LADIES OPEN DAY' WEDNESDAY	SEE NOTICE BOARD FOR CATERING LIST	AL MURRAY	AL MURRAY
<b>DECEMBER</b>					
SUN	1 <sup>st</sup> Dec	Sunday Social Tennis		C. WILLING	M. MCLEAN
WED	4 <sup>th</sup> Dec	Ladies Midweek Tennis		AL MURRAY	AL MURRAY
SUN	8 <sup>th</sup> Dec	Sunday Social Tennis		G. LEWIS	N.KILPATRICK
WED	11 <sup>th</sup> Dec	Ladies Midweek Tennis		AL MURRAY	AL MURRAY
SUN	15 <sup>th</sup> Dec	Sunday Social Tennis		W. IRELAND	ASHE.MURRAY
SUN	22 <sup>nd</sup> Dec	CHRISTMAS WINDUP	BBQ DINNER. BRING A SALAD TO SHARE	ALL	COMMITTEE
<b>JANUARY</b>					
SUN	ALL JAN	Sunday Twilight Tennis 4.30pm Start	Call Charmaine 0427 444 407 or Wendy 0402 853 977 or Bill 0428 472 054 or Graeme 0414 731 338	COMMITTEE	COMMITTEE
<b>FEBRUARY</b>					
SUN	2 <sup>nd</sup> Feb	Sunday Social Tennis		B. CLELAND	J. MURRAY
SAT	8 <sup>th</sup> Feb	Pennant Tennis			
SUN	9 <sup>th</sup> Feb	Sunday Social Tennis		C. WILLING	D.AYNSLEY
SAT	15 <sup>th</sup> Feb	Pennant Tennis			
SUN	16 <sup>th</sup> Feb	CHRIS BOLADERAS MEMORIAL TROPHY SELF HANDICAP – DRAW FOR PARTNER	NAMES DUE 12 <sup>th</sup> FEB BBQ DINNER. BRING A SALAD TO SHARE	C. WILLING B.CLELAND	K. SHAW
SAT	22 <sup>nd</sup> Feb	WFI MIXED OPEN DAY CHOOSE OWN PARTNER	NAMES DUE 19 <sup>th</sup> FEB SEE NOTICE BOARD FOR CATERING LIST	C. WILLING B.CLELAND	B. MURRAY
SAT	22 <sup>nd</sup> Feb	Pennant Tennis – Beverley Bye			
SUN	23 <sup>rd</sup> Feb	Sunday Social Tennis		B. CLELAND	M. MCLEAN
<b>MARCH</b>					
SUN	2 <sup>nd</sup> Mar	Sunday Social Tennis	LONG WEEKEND FISH AND CHIP NIGHT	G.LEWIS	B. SHAW
SUN	9 <sup>th</sup> Mar	CHAMPIONSHIPS SINGLES & DOUBLES 10am START or TBA	NAMES DUE WED 5 <sup>th</sup> MAR ROLLING BYO LUNCH	C. WILLING B.CLELAND	N.KILPATRICK
SUN	16 <sup>th</sup> Mar	Sunday Social Tennis		W. IRELAND	J. MURRAY
SUN	23 <sup>rd</sup> Mar	Sunday Social Tennis		C. WILLING	ASH.MURRAY
SUN	30 <sup>th</sup> Mar	Sunday Social Tennis		B. CLELAND	B. MURRAY
<b>APRIL</b>					
SUN	6 <sup>th</sup> Apr	Sunday Social Tennis		G.LEWIS	D. AYNLEY
SUN	13 <sup>th</sup> Apr	SUNDAY CLOSING DAY Championships Singles & Doubles Finals Presentations AGM @ 5pm	BBQ DINNER. BRING A SALAD TO SHARE	C. WILLING B.CLELAND W.IRELAND G. LEWIS	B. SHAW
FRI SAT SUN MON	18 <sup>th</sup> to 21 <sup>st</sup> April	81 <sup>st</sup> ANNUAL BEVERLEY EASTER TENNIS TOURNAMENT	SEE NOTICE BOARD FOR CATERING LIST	EASTER TENNIS COMMITTEE	CAPTAINS/ PRESIDENT

## LADIES MID-WEEK TENNIS

Ladies Mid-Week Tennis will be running as it has over the past 2 years with teams of players of all ability levels in each team. We have players ranging from beginners to pennant players – everyone is welcome!

The season will start on **Wednesday 16th October** (Term 4, Week 1) and will finish in December. We are running it over 9 weeks with scheduled BYES for the Cunderdin Ladies Open Day and Northam Ladies Open Day to encourage our ladies to attend.

We will generally be starting at 9 am to be finished by 11.30 am. Changes to times can occur if we have an overly hot day (8.30 am start).

If you have not yet registered your interest to play or be a "fill-in" player please contact **Aliesha Murray** on **9646 0264** or **alieshamurray@bigpond.com**

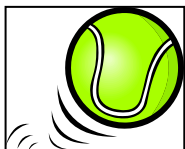


To err is human. To put the blame on someone else is doubles. – Anonymous

Membership forms

SEE YOU AT THE COURTS!





# Beverley Lawn Tennis Club Inc

PO Box 110 Beverley WA 6304

Telephone: (08) 9646 6260

## Members details

ABN 80 267 387 998

Name (s) .....

Address .....

.....

Phone .....

Email .....

## TAX INVOICE

**Membership fees for 2013/2014 Season**      **Due 3<sup>rd</sup> Nov 2013**

(As set at the Annual General Meeting April 2013)

No.	Type of membership	Cost	Total
	Senior Member	\$90.00	
	Junior 15-17 Years	\$30.00	
	Sub junior under 15 years	\$20.00	
	Social Member	\$30.00	

### Additional fees – for information only

Visitor Fee Senior \$10.00

Visitor Fee Junior \$5.00

Members court fee seniors - \$3.00, and juniors \$1.50

Tournament fee \$5.00

Cheques to be made out to the Beverley Lawn Tennis Club or you may do an EFT directly to the Tennis Club ANZ account, please use your surname as the reference. Please advise treasurer of your payment [ak.shaw@bigpond.com](mailto:ak.shaw@bigpond.com) or phone 0428481029. Remember if paying by EFT you MUST still return this form for purpose of member details (required for auditing).

BSB: 016-540    ACCOUNT: 110201399 (ANZ Beverley)

**The Beverley Lawn Tennis Club is not registered for GST.**



## BEVERLEY HORSE & PONY CLUB ALL BREED SHOW



Thank you to all our Sponsors without whom the day would not have been so successful.  
Kokeby Concrete, Beverley Steel Fabrication, Heartlands Vet Hospital, Beverley Bakery,  
Erigolia Pony Stud, Beverley Hotel, Felicity Perry, Europa Saddlery Midland, Saddles Plus,  
Eric Lloyd Photography, Roc N Horse Stud, Farm Direct Stock Feeds, Gavin Transport

### Handler Results

Champion Junior Handler	Amy Blechynden
Reserve Champion Junior Handler	Sarah Bennett
Champion Senior Handler	Brooke Donnelly
Reserve Champion Senior Handler	Kellee-Ann Kenward

### Breed Results

Supreme Champion Unregistered Pony	Paddymyster
Supreme Champion Miniature Pony	Rataras Smartie Pants
Supreme Champion Shetland	Pentland Nicholas
Supreme Champion Welsh B	Erigolia Tanwen
Supreme Champion Part Welsh	Penley Moet
Supreme Champion APSB	Erigolia Tanwen
Supreme Champion Riding Pony	Erigolia Varese
Supreme Champion Pinto	Glenwood Park Exclamation
Supreme Champion Any Other Registered Pony	Caljie Park Miss Molly
Supreme Champion Thoroughbred	Sheza Citinpretty
Supreme Champion Standardbred	Oakridge Foxtrot
Supreme Champion Arabian	Foxhaven Aleirah
Supreme Champion Arabian Derivative	Glenwood Park Exclamation
Supreme Champion Quarter Horse	Benny Chex Country
Supreme Champion Paint	Ready To Hustle
Supreme Champion Dilute	Shortys Got Colour
Supreme Champion Any Other Registered Horse	Kildalton Matthew

**Supreme Young Stock Exhibit** – SF Cactus Jack Slade

**Supreme of Supreme Led Pony Exhibit** – Caljie Park Miss Molly

**Supreme of Supreme Led Horse Exhibit** – Glenwood Park Exclamation

### Performance Results

Champion Junior Rider	Sarah Bennett
Reserve	Katie Harris
Champion Led-In Pony	Pentland Nicholas
Champion Walk/Trot Ridden Pony	Wylowmyst Mynt Jubilee
Reserve	Paddymyster
Champion Walk/Trot/Canter Ridden Pony	Judaroo Hollyhock
Reserve	Cherry Blossom
Champion Walk/Trot Ridden Hack	Sheza Citinpretty
Reserve	Benny Chex Country
Champion Walk/Trot/Canter Ridden Hack	Piper
Reserve	Pembroke Park Finaahlee

Photo Credits ©Eric Lloyd Photography



**Supreme Young Stock Exhibit**



**Supreme of Supreme Pony**



**Supreme of Supreme Horse**







## BEVERLEY HORSE AND PONY CLUB



A number of our members rode in the Beverley Agricultural Show Equestrian Events and had a great day. Congratulations to all our members on their achievements on the day. Thanks to the Beverley Agricultural Society and Balkuling Horse and Pony Club for another wonderful show. A Big Thanks also to the Shire for their assistance in preparing our grounds so that the Equestrian events could be moved off the oval.

The 7<sup>th</sup> September was a lovely day for sitting inside in front of a warm fire, not such a good day for riding at the PCAWA Active Riding Championships. However our 3 young riders showed great fortitude in cold wet & windy conditions competing in the semi-final of the Prince Phillip Mounted Games. A huge well done to Tealah, Katie and Kip who along with their York team mates were eventually placed 11<sup>th</sup>. Unfortunately part way through the day Katie had to withdraw her pony from competition and finish the day as the 5<sup>th</sup> rider.



We were very excited to hear that our two older team mates from York had been selected as part of the Pony Club display riders at the Royal Show. The novelties part of the afternoon and Sunday morning was much nicer weather for Tealah and Bronte to ride in. Both girls represented the Avon zone in a variety of events in the 12 yrs & under age group.

While it was a quiet day in town our Cake Stall on the 14<sup>th</sup> September was still a successful day. Thank you to everyone who bought something off the stall.

Our rally on the 15<sup>th</sup> September saw riders having some fun. They started the morning on the flat working on their horse's lateral movements before moving onto a 6 Bar Jumping session. After celebrating birthdays with a lovely cake and presenting Kip, Grace, Jessica & Katie with their certificates which had finally arrived riders headed out into the distance to practice their cross country skills.

Our Breed Show on the 21<sup>st</sup> was a beautiful day despite the weather surrounding the day. We had a great turn out for our first event. Well done to all the competitors who competed on the day. Big thanks to all the helpers on the day for all the work you did. We now look forward to running the event again next year.

We have a number of riders who are keenly anticipating the upcoming York Hickstead. This event sees riders do a dressage test and a jumping course which includes both Cross-Country jumps and show jumps. This type of event is a great introduction to the one day event without having to do all three phases.

Our next rally is the final one for the year and will be on the 20<sup>th</sup> October. Please let our Club Coach Coordinator Renee know if you will be away so that she can arrange coaches. Our windup for the year will be on the 10<sup>th</sup> November at the Pony Club Grounds. Bush Possom



## HAMMOND FENCING

Jamie & Jen Hammond

**PHONE: 0427 866 488**

- **ALL TYPES OF FENCING**
- **KANGA LOADER & TRENCHING**
- **SLASHING**
- **FIREBREAKS**
- **PIPE LAYING**



Above: Beverley Horse and Pony Club member Vicky Lucas representing the club at the All Breeds Show.

## Coming Events In Beverley

Friday	04 October	2013 Brookton Photo & Art Exhibition
Saturday	05 October	Beverley Police Golf Day
Sunday	06 October	Beverley Bowling Club Opening Day
Tuesday	08 October	Senior's Falls Prevention Expo
Wednesday	09 October	Mad Men's Muster
Wednesday	09 October	Kids Sports Day at the Town Oval
Thursday	10 October	Boogie Roos at Playgroup
Saturday	12 October	Tennis Club Busy Bee
Sunday	13 October	Beverley Lawn Tennis Club Opening Day
Wednesday	16 October	Beverley Agricultural Society AGM
Friday	18 October	St Mary's Anglican Annual Rose Show
Saturday	19 October	UWA Design Presentation
Saturday	19 October	Local Government Elections
Sunday	20 October	Stomp for the Stables 'Walkathon'
Sunday	20 October	BHPC Rally
Monday	21 October	Beverley Historical Society AGM
Tuesday	22 October	Junior Tennis Coaching Starts
Tuesday	22 October	Beverley Naturalists Club AGM
Friday	25 October	OKTOBERFEST at Freemason's Tavern
Saturday	26 October	Twilight Khanacross
Sunday	27 October	Autocross
Saturday	02 November	WA Tractor Pull - Round 1
Saturday	02 November	Scottish Night
Monday	04 November	Wild Women of the West Seminar 2013
Tuesday	05 November	Melbourne Club Lunch at Freemason's Tavern
Saturday	23 November	WA Tractor Pull - Round 2
Saturday	30 November	Chain Reaction at Platform Theatre
Saturday	21 December	Variety Christmas Concert
<b>2014</b>		
Saturday	15 February	Queen & Freddie Mercury Tribute Concert
Saturday	08 March	Opera on the Platform
Saturday	15 March	WA Tractor Pull - Round 3
Saturday	03 May	WA Tractor Pull - Round 4
Saturday	01 June	WA Tractor Pull - Round 5

The flag was flown at half-mast on the Beverley Town Hall as a mark of respect to:-

### DISCLAIMER

The information in this publication is of a general nature as a service to the ratepayer. The articles included herein are not intended to provide a complete discussion of each subject. While the information is believed to be correct, no responsibility is accepted for its accuracy. No liability is accepted for any statements of opinion or any error or omission.

## BEVERLEY BLARNEY

1100 copies each month

### ADVERTISING RATES

Size A: (~122 x 180mm)	\$80.00 GST inc
Size B: (~122 x 89mm)	\$40.00 GST inc
Size C: (~60 x 89mm)	\$24.00 GST inc
Size D: (5 lines)	\$ 8.00 GST inc
Size E: (3 lines)	\$ 5.00 GST inc
Size F: (122 x 135mm)	\$60.00 GST inc

Club notes etc. are free of charge

**The deadline for the next  
Beverley Blarney is 4pm  
Wednesday 23 October 2013**

Shire of Beverley  
PO Box 20, Beverley, 6304

Tel: 9646 1200 or Fax: 9646 1409  
Email: blarney@beverley.wa.gov.au

### DRUG & ALCOHOL COUNSELLING

The Wheatbelt  
Community Drug  
Service Team will  
be visiting  
Beverley Hospital  
fortnightly.

For appointments please phone  
Jackie Darby on  
96211 055.

### Happy Birthday

Clare Moulton  
and  
Rob Fricker

Celebrating their birthday's  
on MONDAY 14 October

### BEVERLEY BLARNEY DEADLINE DATES FOR 2013

**\*\*Please note - deadline is 4pm\*\***

ISSUE	DAY	DATE
NOV 2013 issue	WEDNESDAY	23 October 2013
DEC 2013 issue	FRIDAY	22 November 2013
JAN 2014 issue	THURSDAY	19 December 2013



# What's on in Beverley

## in October 2013

Mon	Tue	Wed	Thu	Fri	Sat	Sun
	<b>1</b> Garden Club HACC Men's Shed Stay Active Quilting	<b>2</b> HACC RAOB Ambulance Training	<b>3</b> Restricted burning starts Playgroup Line Dancing Lions Dinner Meeting	<b>4</b> Night Golf Op Shop Youth Group	<b>5</b> Police Golf Day, Golf Closing Day Samba @ CWA	<b>6</b> Bowling Club Open Day
<b>7</b> Weight Watchers Bridge @ CWA Dance	<b>8</b> HACC Men's Shed Stay Active Quilting Seniors Falls Prevention Expo & Gopher Service	<b>9</b> HACC Mad Men's Muster Holiday Sports	<b>10</b> Boogie Roos at Playgroup Friendly Club Line Dancing	<b>11</b> Op Shop Youth Group	<b>12</b> Tennis Club Busy Bee Samba @ CWA	<b>13</b> Tennis Club Opening Day
<b>14</b> Weight Watchers Bridge @ CWA Dance	<b>15</b> HACC Men's Shed Stay Active Quilting <b>Students back to school</b>	<b>16</b> HACC Ladies Tennis Ag Society AGM Ambulance Training Masonic Lodge 7.30pm	<b>17</b> Playgroup Line Dancing Lions Business Meeting	<b>18</b> Op Shop Youth Group ROSE SHOW Karate	<b>19</b> LG Elections UWA Design Studio Presentation Samba @ CWA	<b>20</b> Stomp for the Stables Walk a thon BHPC Rally
<b>21</b> Weight Watchers Bridge @ CWA Dance Historical Society AGM	<b>22</b> HACC Men's Shed Stay Active Quilting Naturalist Club AGM Ambulance meeting	<b>23</b> HACC <b>BLARNEY DEADLINE</b>	<b>24</b> Playgroup Line Dancing Station Arts AGM	<b>25</b> Op Shop Youth Group Oktoberfest at Freemason's Karate	<b>26</b> Twilight Khanacross Samba @ CWA	<b>27</b> Autocross
<b>28</b> Weight Watchers Bridge @ CWA Dance	<b>29</b> HACC Men's Shed Stay Active Quilting <b>COUNCIL MEETING</b>	<b>30</b> HACC	<b>31</b> Story time at Playgroup Line Dancing			