



BEVERLEY BLARNEY

Edition 345
July 2013
No Charge

BEVERLEY OSCARS



REDBACKS REVUE NIGHT

SATURDAY 27 July
Beverley Town Hall at 6:30pm
Proudly brought to you by
Beverley Redbacks
Football, Netball & Hockey
Come and join us to walk
the red carpet for a night of
great entertainment



Event Details can be found on page 25



President Report **July 2013**

Recreation Ground Project

The Recreation Building has been successfully in use since 8th June and many very favourable comments have been received regarding this community facility. Courts completion is now reliant on weather conditions prior to application of the sport surface and line marking, re-establishment of the play ground is pending the outcome of a grant application, and landscaping works continue. The official opening is not anticipated until early 2014.

Youth Outdoor Activity Area and Skate Park

Our youth (and those young at heart!) may be interested to know that Council has initiated enquiries regarding a skate park facility for Beverley. I expect this process may seem tedious to the energetic younger members of our community however once plans are identified this can be a focus for future fundraising efforts to assist with the project and the youth will be included in the planning process.

Local Planning Strategy

The 'Shires of Brookton and Beverley Local Planning Strategy' received final adoption by Council at the June Council meeting and now will go to the WA Planning Commission for endorsement. This document will support the preparation of a new Local Planning Scheme.

Local Government Elections **19th October 2013**

Elector enrolments close on 30th August 2013, this also includes rate

payers who do not reside in the Shire however wish to vote in the forthcoming Local Government elections. Candidate nominations will be open from 5/9/2013 to 12/9/2013.

Sustainable Asset Management

Councillor White and I recently attended a training session in sustainable asset management. Councils need to ensure services and infrastructure provision remain cost effective and relevant, whole of life costs are considered, and long term financial planning rather than just annual budgeting is undertaken to identify and address problems of sustainability and affordability.

Caravan Park

Compliments continue to be received from visitors to the caravan park; recently this occurred via the WALGA (WA Local Government Association) help desk which complimented the Shire on a great caravan park and sincere praise for caretaker Janet Baldwin.

Community Resource Centre

Congratulations to the Beverley Community Resource Centre on successfully receiving funding for a study to ensure its facilities and services remain relevant. Please assist them in this process by returning the community feedback questionnaire and involvement with any community consultations or information sessions.

Meeting with Minister for Heritage

In June, the CEO and I met with the Hon Albert Jacob, Minister for Environment and Heritage, his Chief of Staff and Policy Advisor to discuss various issues regarding Avondale. Lack of funding toward Rural and Regional Heritage was also raised.

Sheep Dog Trials

Congratulations to Ivan Solomon, overall winner with his dog "Jill", at

the recent Avondale Working Dog Trials. In the third year of being held at the property, the trials were again very successful with a sound number of participants and supporters. Previous years have seen the trials held in conjunction with the annual Clydesdale and Vintage Day, which hopefully will be the case again in 2014 as Avondale was indeed very quiet without the vibrancy of the large crowds who usually are in attendance.

Beverley Show

Saturday 24th August 2013

As in 2012, the Shire Council will have a presence at the Beverley Show where Councillors and staff will be on hand to provide information, discuss Council plans, listen to constituent comments and concerns, and encourage interest in the forthcoming local government elections.

See you at the show!

Dee Ridgway
Shire President



*Photo courtesy of Kai Photography
Pictured above:*

Ivan Soloman and his dog "Jill" at the Avondale Working Dog Trials.



Family: Peter Gogol with granddaughter Imogen.

Brave granddad face of the State

■ Kate Bastians

Peter Gogol does not like to brag about the contributions he has made to the community, despite spending his whole working life in uniform — in the Royal Australian Navy and as a fire officer.

The Beverley grandfather received a certificate of bravery from the Royal Life Saving Society for rescuing a man — who had been asleep — from a burning house in Dianella in the mid 1990's.

Mr Gogol, who served in the navy, rising to the rank of petty officer, is pictured with his granddaughter Imogen Powell, 2, on Anzac Day.

"It's a tradition for our family that we bring the children to march as well, to teach them the values and the meaning of Anzac Day," he said.

The image has been entered in *The West Australian's* Faces of WA photo promotion which aims to showcase and celebrate the people of WA.

Readers are invited to submit a portrait photo of themselves at work, play or with family or friends in WA, and explain in the photo caption why it represents a face of the State.

Article courtesy of *The Western Australian*, Monday, June 10 2013



Pictured above (left) Beryl Petchell and (right) Lorraine Sims

Congratulations to Beryl Petchell and Lorraine Sims, who were recently honoured with Certificates of Merit for over 50 years of community service and dedication to Country Women's Association of Western Australia.

The awards were presented by Beverley branch's current president, Gracie Courtney at the CWA rooms in Beverley on Thursday 9 May 2013.

Lorraine and Beryl both joined CWA branch in Beverley on the same day in March some 57 years ago. Since then they have been stalwart members of the branch working for the community in many ways. Such devotion and dedication is an inspiration to all and we treasure their membership.

PUBLIC NOTICE

Annual General Meeting of the 'Beverley Men's Shed Inc.' will be held at the shed.

DATE: Tuesday 2 July

TIME: 10am

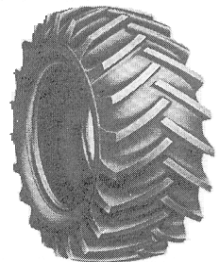
All men of the district are welcome



CLOSED from 12 July - 19 July
Re-Opening on Monday 22 July

BLECHY'S TYRE AND BATTERY

City Prices



All Major Brands
Second Hand

Batteries, Repairs, Fitting, Balancing
Bridgestone Preferred Dealer

Ph/fax Mick on 9646 1607 or a/hrs 0400 804 045

48 Dawson St.



(Old Telecom shed)





Disability Access and Inclusion Plan

The Shire of Beverley would like to thank the community for their input into the draft 2013—2018 Disability Access and Inclusion Plan (DAIP). All comments and suggestions received have been included in the Draft DAIP. The Draft DAIP is available for viewing and comment can be made at the Shire Office, or it can be sent electronically. Any further comments to the Draft DAIP must be received by 4.00pm Monday 15 July 2013.

Stephen Gollan
Chief Executive Officer



FREE HOME FIRE SAFETY CHECK

FIRE PREVENTION STARTS WITH YOU

KEEP WARM KEEP SAFE

**EACH YEAR MORE THAN 1,500 FIRES OCCUR IN
THE HOME**

**FIVE PEOPLE DIE EACH YEAR
MOST DEATHS OCCUR FROM SMOKE AND
TOXIC FUMES**



**FOR A 'FREE' HOME FIRE SAFETY CHECK
PLEASE CONTACT THE SHIRE OFFICE ON
9646 1200
OR THE COMMUNITY EMERGENCY
SERVICES MANAGER ON 0427 057 719**

Australia's Biggest Morning Tea

Congratulations and thank you to the Community of Beverley for making the morning the huge success that it was.

We raised **\$1,022.40** for the Cancer Foundation of WA.

Raffle winners were:

1st - K Watts

2nd - H Kendrick

3rd - K Wansbrough

Well Done Beverley

Friendly Club

Our next friendly club meeting will be held at the Alex Miles Lodge.

Date: Thursday 11 July 2013

Time: 2.00pm

Hosts: Catholic Ladies

This afternoon is open to everyone
So please come along.

For more information
Please contact Sylvia 9646 1072



FOR SALE

GAS HEATER

RINNAI Portable White
ENDURO 13

\$400 excellent condition
Phone: 9646 1892

**Casual Truck Driver
Wanted for Harvest**

MC Licence required
For more information please contact:
Garry Miller 0428 464 066

FOR SALE

2003 Mitsubishi Magna 3.5
50,600km VGC, auto, cruise control,
climate control, licenced to Dec 2013

\$8,000

Phone David 0428 958 716

FOR SALE

Men's Bicycle

Revel, 21 gears, mono shock,
aluminium frame, good condition.

\$100 ono

Phone Mitch 0439 927 724

RELOCATING

Mescal from
Ye Olde Beverley Drapery
(next to the butchers)
is relocating and down sizing.

In the next coming weeks
there will be lots of bargains.

All clothing must go.

Come and make an offer.

Phone: 0400 194 238



PUBLIC NOTICE

The Annual General Meeting (AGM)
for members of the Beverley CRC will
be held on Thursday 5 September
at 6pm at the centre.

If you wish to become a member of
your local CRC please contact our
secretary on 9646 1887

CAT MICRO-CHIPPING DAY

A big thank you to all the cat owners who had their cats
micro-chipped on Monday June 10!

We had 35 cats micro-chipped in total and it all went really well.
Firstly I would like to thank Heartlands Veterinary Clinic for coming
and making this day so easy and successful. You made it so easy and
quick, which was much appreciated.

I would like to thank the Shire of Beverley for providing the building
for us to use on the day. Thanks must go to Matt the Ranger for all
the advice for setting up this day.

And a BIG thank you to my family Mike,
Jess, Michelle and Dottie for working on
the day to get this day running and to
keep it flowing smoothly.

Thank you from Phyllis Facey



GJ & VJ SEEBER
trading as

**BEVERLEY PLUMBING
& GAS SERVICES**

Established in Beverley since 1997
Your Local Licensed Plumber and Gas Fitter
Servicing Beverley & Surrounding Districts

PLUMBING

- ★ ACCREDITED WATERWISE & ENVIROWEST PLUMBER
- ★ SEPTIC INSTALLATIONS
- ★ SEWERAGE CONVERSIONS
- ★ MAINTENANCE & INSTALLATION of all PLUMBING REQUIREMENTS
- ★ INCLUDING BACKFLOW INSTALLATION and TESTING
- ★ NO JOB TOO SMALL OR TOO BIG
- ★ HOLDS CLASS 'A' PLUMBERS LICENCE

GAS FITTING

- ★ LICENSED (UNRESTRICTED) GAS FITTER for all ASPECTS of gas
- ★ MAINTENANCE and INSTALLATION
- ★ AUTHORISED SERVICE AGENT for ELECTROLUX

Mob: **0418 929 141**
Fax: **9647 2109**
Tel: **9647 2115 (after hours)**

Water Auth Lic No. PL216
Gas Lic No. 386
Back Flow Lic. 103



GARAGE SALE

DOWNSIZING

402 Sheahan Road

Beverley (Kokeby)

Off Dale Kokeby Road

Saturday 6th July 2013

&

Sunday 7th July 2013

7.00am to 4.00pm

WILLS AND ENDURING POWERS OF ATTORNEY

A friendly service for York, Beverley and
Quairading.

John will come to your house or farm.

JOHN MULLER LLB
SOLICITOR

0419 899 779

Email: mullja@bigpond.com

"Lyme Disease Awareness & Action Day"

To be held in conjunction
with the Beverley Football
Club fixture
Beverley vs Quairading on
Sunday 4th August.

Lyme Disease Merchandise
will be on sale with an
opportunity for autographs
to be collected.



Special guest Paul Hasleby
has kindly made himself
available for the day &
invites you to join him for
lunch and then in the
Corporate Box to view the
game.

Fees will apply as a
donation to the Foundation.

All Corporate Box
applications to be completed
by Friday 2 August.

Please contact

Jeff Murray 0428 925 662
or
Dean McDonald 0412 549 196.



TEEDE'S AUTO ELECTRICS

Auto electrical & Air-conditioning Repairs
(AU09431)

Guy Teede

Unit 5,
Lot 466 Brookton Highway,
Brookton WA 6306

Mobile: 0428 721 986

Phone: (08) 9642 2333

Fax: (08) 9642 2344





Beverley Walking Group

Meets on Monday, Wednesday and Friday at 7.30am at the Station Garden for a walk and a cuppa.

New Members are welcome.

Contact Darci Miller
0427 464 029
darcimiller29@gmail.com



A HUGE thank you to everyone who has contributed to the Worldwide "May Lyme Disease Awareness Month".

The funds raised have gone to the Karl McManus Foundation for the establishment of a research facility in Sydney where improved testing and treatment of Lyme Disease can be conducted. The wife of Karl McManus, who succumbed to Lyme Disease after three years, has started the foundation in his name.

The fundraising will go on past May until the project is funded and can proceed. Dean McDonald and the Beverley Football Club have offered to organize a **"Lyme Disease Awareness & Action Day"** on **Sunday 4th August**, where funds raised will go to the Foundation. An enormous thank you in advance for Dean's generous offer of support in organising the day.

There is a lot of information internationally known about Lyme Disease but local knowledge is scarce. One of the biggest issues is medical and political acceptance that Lyme Disease does in fact exist in Australia. By having "Lyme Days" we hope that the awareness will encourage recognition of this disease and it's far reaching consequences. It is a thought provoking fact that sufferers of Lyme Disease in the USA outweigh sufferers of HIV & Aids.

If anyone would like to know more please call or ask
Jeff & Wendy Murray.
We would be happy to share any information we have with you.
or refer to www.karlmcmannusfoundation.org.au
Again thank you so much for your generous support.

CENTRE COORDINATOR PART TIME - FLEXIBLE



We are looking for a vibrant, community minded person to be responsible for the day to day running of the Centre. Working 30 hours per week, this position requires a person who is computer literate and highly organised – someone who is self-managed and will use initiative in planning and implementing activities at the Centre.

This varied role includes everything from customer service through to preparing budgets and business plans. Remuneration will be based on skills and experience.

All enquiries to Committee Chairperson Kim Mills on 9642 6013 or brookton@crc.net.au.

Applications will be received until 4.00pm Monday 8 July, and should be posted to:

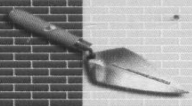
“Confidential Application”
Brookton Community Resource Centre Inc
PO Box 137
BROOKTON WA 6306



Department of
Regional Development and Lands



**School Holidays - last day for term 2 is Friday 5 July.
Term 3 commences on Tuesday 23 July.**




D.J. YATES

*BRICK & STONEMWORK RESTORATION
AUTHENTIC REPOINTING OF MORTAR
RISING DAMP RECTIFIED
PROPERTY MAINTENANCE*

PHONE DAVE ON 0419041542
A/H 96412868



Your Country Music Store
view catalogue at
WWW.INSIDEMUSIC.COM.AU
view other products at
www.number90galleryandmusic.com.au
Contact Peter Byfield
N° 90 Gallery & Music
Mobile: 0418 906 307
email: number90@westnet.com.au
website: www.number90galleryandmusic.com.au
90 Fitzgerald Street
NORTHAM WA 6401



*'In a gentle way,
you can shake the world.'*
-Gandhi

BEVERLEY BAKERY

Open Thursday to Monday from 6.00am
Closed Tuesday & Wednesday

**Fresh Bread, Pies, Pasties and
Salad Rolls Made Daily.**

**Try our Chilli
Beef Pies**

Phone Angie for orders
0427 106 742

WG CEILINGS

Specialising in:

- Gyprock Fixing & Flushing
- Cornice Installation & Repairs
- Sagging Ceilings & Removal
- Cracks in Ceilings & Walls
- General Flushing & Repair Work

**Phone Wayne Giesemann
0413 091 109**



Shire of Beverley

Building Maintenance Officer

The Shire of Beverley is seeking an enthusiastic and experienced building tradesperson who enjoys the challenge of maintaining and restoring a range of council owned property.

Beverley is a picturesque town in the Wheatbelt less than one and a half hours drive from Perth, and within easy day trip access to the Avon region.

The successful applicant will have a friendly professional attitude, a current C class driver's license and sound knowledge and experience in the building industry.

The salary offered is in the range of \$45,000.00 to \$60,000.00pa, depending on skill and experience.

Please call Emma Robson on 9646 1200 or email admin@beverley.wa.gov.au for a copy of the position description and selection criteria.

Your application should include a CV and a covering letter which addresses the selection criteria and be mailed to Mr Stephen Gollan Chief Executive Officer, PO Box 20, Beverley WA 6304 or emailed to admin@beverley.wa.gov.au. Applications close Friday 26 July 2013 at 4.00pm.



Beverley Community Directory 2013

The Beverley Community Directory is **FREE** to all local shire residents. The directory is updated and published annually.

All residents and community group listings will be at no charge. Anyone one who requires their business/group/personal contact details to be included is required to fill in a form, which is available at the CRC or online at www.beverley.crc.net.au. Please return your signed forms to our office by no later than **Tuesday 08 October 2013**.

Businesses will again have the opportunity to choose different levels of advertising suitable to their budgets. Advertising will be updated on an annual basis keeping our town's business products and services current and relevant. Please come into the CRC to discuss securing your advertising position prior to the directory being released in late October.

Everybody's help is paramount to the success of this new directory. If your name, address and phone number was not included in the 2012 edition you will need to register details by submitting a form. If your details have changed, please notify staff at the centre of the information that needs to be amended. The Beverley CRC is excited to provide another new service to our community.

Beverley Community Resource Centre
PO Box 310 Beverley WA 6304
P: 08 9646 1600 F: 08 9646 1295
W: www.beverley.crc.net.au
E: beverley@crc.net.au

Beverley District High School

Benvenuti (Welcome) to our last edition for this term. I am sure that I am not the only one to say that this term has certainly flown. We have had a busy time with both the Faction Cross Country and Interschool Cross Country events (which we hosted this year) along with excursions and of course lots of school work.

Staffing

We would like to welcome Gemma Ugle, who is a past student, to our school as our AIEO representative. We hope you enjoy your time with us.

Also, due to a restructure of our classes, we would like to welcome Sarah Aynsley and Marg Barrett-Lennard in their new roles as Year 7 teachers.

We would like to wish Hayden O'Mara a great holiday as he ventures with his family to England and Europe. We are all very envious. Have a "buonissimo vacanza".

Below are recounts from the Year 1/2 class of Simultaneous Story Time which was in May and of their recent excursion. Enjoy!!!!

Simultaneous Story Time

On Wednesday the 22nd May the junior primary children were treated to the fantastic story reading talents of Mrs Sandy Shaw. Sandy entertained the children reading "The Wrong Book" by Nick Bland as part of National Simultaneous Story Time. The same story is read in schools at the same time right across Australia. The children eagerly joined in reading different parts of the story. They then demonstrated their dramatic flair by becoming different characters from the story.

It was fantastic to watch all the children so excited to read and become part of the story.

Many thanks go to Sandy for sharing her time and talents with us.



Mundaring Discovery Centre

On Friday 14th June the Year 1/2 and Year 2 classes joined together to travel to Mundaring to visit the Discovery Centre. After some morning tea we set about our first task - looking for and identifying creatures from the underworld. Armed with containers and special magnifying glasses, we split into groups and set about finding a wide range of invertebrates. The children explored the amazing undergrowth collecting many different types of bugs.

After we had all refuelled with some lunch, the next task was to take an easy walk along a bush track, or so we thought. The children were blind folded and had to rely on their other senses to follow a rope. They had to decipher special signs to help them negotiate obstacles along the track, using only their hands ears and noses.

We all had a great day and would like to thank Ben Murray, Chris Mellick, Anthea Cooke and Tess Hawke for driving and helping us throughout the day.



Faction Cross Country Results

6yrs Champion Boy	Matthew Bowden
Runner Up	Jayne Thomas
6yrs Champion Girl	Alice Stevens
Runner Up	Leah Morrell
7yrs Champion Boy	Thomas Mellick
Runner Up	Nathan Styles
7yrs Champion Girl	Grace McLean
Runner Up	Alfee Stevens
8yrs Champion Boy	Cody Stanfield
Runner Up	Aaron Schilling
8yrs Champion Girl	Mackenzie Thomas
Runner Up	Rebekah Aynsley
9yrs Champion Boy	Declan Kilpatrick
Runner Up	Mitchell Ashworth
9yrs Champion Girl	Abbey Cooke
Runner Up	Bonnie McIvor

Friday 31st May

10yrs Champion Boy	Joshua Styles
Runner Up	Samuel McLean
10yrs Champion Girl	Jiselle Hammond
Runner Up	Grace Fisher
11yrs Champion Boy	Callum Overington
Runner Up	Stanley Stevens
11yrs Champion Girl	Stella Wilkinson
Runner Up	Hannah Bowden
12yrs Champion Boy	Lachlan McLean
Runner Up	Kelvin Quartermaine
12yrs Champion Girl	Georgina Fisher
Runner Up	Evie Wilkinson
13yrs Champion Boy	Jesse Worster
Runner Up	Luke Stevens
13yrs Champion Girl	Michaela Quartermaine
Runner Up	Eirene Ballesteros

Interschool Cross Country

On Thursday 13th June, selected runners from years 2-7 represented Beverley DHS in Beverley at the CGSISA Cross Country Carnival. Our students were very competitive in their individual events with some outstanding individual achievements. The determination, endurance and sportsmanship displayed by the Beverley students were exceptional. Our sincere thanks to the many parents that volunteered their time to assist in making this day a highlight on the association sporting calendar.

Placegetters

Boys 8 years and under	Cody Stanfield	Runner up
Girls 8 years and under	Mackenzie Thomas	Champion
Boys 12 years and under	Lachlan McLean	Runner up

Upcoming Events:

Thursday 27th June	CGSISA Winter Carnival @ Pingelly Town Oval
Friday 5th July	Holidays commence for both students and teachers.
Monday 22nd July	Pupil Free Day. No school for students.
Tuesday 23rd July	Third Term begins for students.

We all wish you a great and relaxing holiday with your children. Be safe and come back to school all refreshed for a jam packed third term.

Sera Minchin

COUNTRY LINE DANCING



Every Thursday
9.30am to 12.00pm
Beverley Town Hall

Enquires: Jan
9646 4041



Travelling Overseas or around Australia?
To book a holiday of a lifetime
Contact your local travel professional
Catherine Riches

Tel: (61)8 9647-2173 Email: broker3@bigpond.com
Travel Associates Australia Pty Ltd - Licence Nbr:9TA1188
Member of Travelscene American Express



**BEVERLEY
HISTORICAL
SOCIETY**

The June meeting of the Society was attended by ten members.

We have received advice from the State Heritage Office that the **St Mary's Anglican Church Precinct** – including the church, the rectory, the lemon-scented gum and the memorial lychgate – has been placed on the State Heritage List on an interim basis (the start of the process). St Mary's Church is a good example of a Federation Gothic building, while the Memorial Lychgate is the only such war memorial in Western Australia.

Research requests this month included one from a family member looking for the burial place of a **Mary Ann Lloyd** who was murdered by her paramour, a shepherd named Goswell. The Society was able to establish that Mary Ann was buried at the Moorambine Church cemetery in 1873 – the year the church was consecrated.

We've also received a request for information about the early days of the **Beverley Racing Club**. **Photos of winning horses** from early in the last century (or even before) would be very much appreciated. Can you help?

Donations to the Museum this month included:

- Four **telegrams** (on green paper) delivered to a local couple on their wedding day in 1918.
- The printed program for the Funeral Service for the **Right Hon Lord Forrest** with prayers & hymns held at St Georges Cathedral on 7 May, 1919.
- A **cane letterholder** - over 100 years old - from Uralla Homestead near County Peak
- Commonwealth of Australia War Savings Certificate for £1, dated 23 July 1942 – presented to a local personality as a memento of the **Ugly Man competition** conducted by Beverley & Districts War Patriotic Fund Committee
- 3 **Acetate discs**, 10 in (and 12 in) diameter, with label "*Chas E Blanks Sound Recordings, Beverley Theatre, 11 ads (16 ads)*" for playing while advertising slides were on screen at the pictures.

Next meeting 2pm Monday 8 July 2013. All welcome. For further information contact the secretary at bhsdeadfinish@gmail.com.



**St John Ambulance
BEVERLEY SUB CENTRE**

URGENT – WE NEED YOU!

Our volunteer reserves are low. To maintain an efficient service we urgently need new volunteers to join our team. If you are up to the challenge to be trained as an Ambulance Officer, we would love to hear from you.

This is an opportunity for you to make a real difference and to learn life saving skills to benefit you and others, well into the future.

Please contact our Recruitment Officer, Peter Jenkin on 9646 1385 or our President John Lane on 9646 1306. If you prefer, you can send an email to bevsja@westnet.com.au Please, don't put it off any longer. We need you!

NEW GARDENER

We welcome John Van Tiel into the St John Ambulance family as our new gardener. John, thank you for 'stepping forward' and we hope you enjoy your time with us.

AGM

The AGM of the Beverley St John Ambulance Sub Centre is as follows:

When: **Tuesday 23rd July 2013**

Where: **The Beverley Sub Centre in John St, Beverley**

At: **7.30 pm**

Nomination forms are available from Beverley Farm Services or Avon Trading Co, or you can e-mail request to the secretary – bevsja@westnet.com.au

Nominations must be completed and lodged with the secretary by 16th July.

Mail to: PO Box 152, Beverley 6304.

All members of the community are invited to attend. If you wish to participate in voting, you will need to be a member of the Sub Centre and pay an annual membership fee of \$5 to the secretary by 11th July 2013 (local benefit membership is not the same). Current active volunteers of the Sub Centre, Life members, etc, have automatic membership. We urge all our current volunteers to attend.

We look forward to your support.

If you need further information, please contact:- President John Lane 9646 1306 or Secretary Sharyn Morrell 9646 0646.

AVON VALLEY WINDSCREENS

A preferred windscreen repairer

**Cars, Trucks & Tractors
Replacements & Chips**

Kale & Ron Robinson

0429 001 393

32 Georgiana St, York 6302

We come to you!





**BEVERLEY VISITORS CENTRE &
AERONAUTICAL MUSEUM**

Our lovely weather at this time of year has attracted a number of Eastern States visitors and also many people from the metropolitan area, who want a day in the country. The Bureau has also had a tour bus of seniors from Northam this month.

We continue to get lots of positive comments about our caravan park. Thank you, Janet. You are doing a great job!

Recently, we have put a list in our outside Notice Board of Beverley's retail outlets and services, along with their opening times in an effort to inform people, who perhaps arrive in town when the Bureau is closed, of what our town has to offer. Should any of these be incorrect, we would appreciate it if the businesses concerned would let us know.

Thanks again to our great volunteers who keep the Tourist Bureau open and cheerfully greet the many visitors who visit our town.

To all, stay well and dodge the flu!

Singing Workshop

for the

Beverley Station Singers



Wednesday, July 10 at 7pm
in the Station Gallery

with

singer and songwriter,
Kelly Newton-Wordsworth.

www.kellynewtonwordsworth.com

Cost: \$35.00

New singers very welcome!

For more information please contact:

Sarah Miller, Secretary, Beverley Station Arts Inc

9646 4066

0427 464078

miller@reachnet.com.au

Dawson's Concrete & Reinforcing

"Your Local Beverley Concreter"

- Concrete Formwork & Steel Fixing
- Driveways, Shed floors, Maintenance pits, Silo pads, Super sheds, House pads
- Fully mobile service
- Over 30 Years Experience
- 7 Days A Week
- Professional, Reliable Service

Phone for a Free Quote

SANDY DAWSON

Mobile: 0417 375 221

Email: pameladawson@bigpond.com



Station Gallery and Platform Theatre News

Station Gallery

Artist-in-Residence



It's a great pleasure to have Marta Salamon from Victoria back with us until the end of July. Always a delight to have such a positive artist-in-residence who relishes the chance to make meaningful work during her stay and yet willing to open the gallery and spend time with visitors to further promote our town. Marta won't be holding any formal classes this trip but welcomes anyone who is interested to bring in their work and do some painting with her as she continues to execute her exquisite botanical watercolours.

For further information regarding residencies keep an eye on the Bulletin and/or contact Artist in Residence Coordinator Marylou Hutchinson on 96471027 / 0427085511 or email: hutchinson@wn.com.au

Artists in Residence programme 2013:

July 8th- 31st: Marta Salamon (Victoria)

August 1st - 14th: Jessica Ipkenanze (Perth)

August 15th- 22nd: Eunice Mitussis & Biruta McLaughlin (Perth)

September 1st- 30th: Anita Stewart (USA)

October 1st- 31st: Dorothy McInnes, Jenneke Biehl & Suzanne Crawly (Perth)

November 1st- 30th: Janet Pfeiffer (Perth)

December 2nd - Danielle Smith (California, USA)



Beverley Choir

Beverley Station Singers has met again this month under the direction of Kelly Newton-Wordsworth and practice is underway for the choir to sing at the Country Choir Bash in September. Additional singers are always welcome and the next session on Wednesday 10th July - see separate advertisement and look out for messages in the Beverley Bulletin or contact Sarah Miller - Ph 96464066 or email miller@reachnet.com.au

Platform Theatre

Plans are under way for the Country Choir Bash on the afternoon of Sunday 29th September. The date of this event has been set to be included in the big campervan weekend in Beverley.

Next month's newsletter will contain a full programme of events for this coming season.

Beverley Station Arts Membership

A reminder that yearly subscriptions are due this month. See the accompanying form on page 15 if you wish to renew your membership as a Friend of the Station or see Pauline at the Newsagency.

Platform Theatre Chair Drive

Station Arts continues to build its store of chairs through a "chair drive" where by you are invited to donate \$20 for the cost of a chair. The tally so far is **350**. If you would like to donate a chair, and/or become a member of Beverley Station Arts Inc (Friend of the Station) please see treasurer Pauline at the Newsagency, phone 96461042 or email beverleystationarts@gmail.com. Membership forms can also be downloaded from www.beverleywa.com (NB cheques to be made payable to Beverley Station Arts Inc).

Dates to mark on your Calendar:

Sunday 29th September: COUNTRY CHOIR BASH

Saturday 2nd November: SCOTTISH NIGHT

Saturday 21st December: VARIETY CHRISTMAS CONCERT

Gallery Open Hours

11.00am - 3.00pm Thursday, Friday, Saturday and Sunday

Jenny Broun, President, Beverley Station Arts

96461500 / 0419040063 / brounj@westnet.com.au

beyond gardens

live



Now Fridays
at 11am and 7.30pm

The Beyond Gardens panel answer your questions in a unique and interactive gardening program. Plus plenty of handy tips to get the most from your gardening.

Series 3 July 5, 12, 19, 26 & August 2

Email your questions and pictures to westlink@rdl.wa.gov.au
Or ring in on the day on 1800 678 208

Beyond Gardens LIVE is brought to you by the Beyond Gardens Team and the State Government's Westlink Network.

Proudly supported by:



Government of Western Australia
Department of Regional Development



ROYALTIES FOR REGIONAL



Western Australian
Community Resource Network



WATER



FEASIBILITY STUDY

To ensure the centre remains relevant and continues to provide useful services, facilities and support for our community.

Please give us your feedback in the community survey which you should soon receive in your mailbox.

Information provided will assist us in developing future plans of the centre.

BEVERLEY STATION ARTS INC.

Membership Application/Renewal

Membership means

You become a "Friend of the Station"

Your support helps us to maintain the Gallery and continue to present new and different events at the Platform Theatre

Beverley Station Arts is a non-profit organisation run by volunteers

Annual membership is: \$30.00 p.p. (new member), \$25.00 p.p. (renewal).

Which covers the period 1st July – 30th June.

Name:.....

Address:.....

Phone:.....Email:.....

New member \$30 pp

Renewal \$25 pp

Donation

Please make cheques payable to "Beverley Station Arts Inc. and forward to

P.O. Box 112, Beverley WA 6304 or;

Pay directly to our account at ANZ Bank account : BSB 016 540 Acc. No. 2024 40346

Enquiries can be directed to: Pauline Knight on 9646 1142

BEVERLEY PLAYGROUP NEWS

It's been quite busy at Playgroup since the start of the 2nd term. We began with a Mother's Day Morning Tea where the babies and children decorated cupcakes and made lovely flowers for their mums. It was such a lovely morning!

Then on Thursday 30th May we had the Biggest Morning Tea. It was a success with so many mums and grandmothers attending. Everybody had a great time: catching-up, playing, reading stories and eating yummy food that was brought. We raised \$41. Thank you so much everyone for your kind donations and for bringing morning tea.

The children are working hard on the mural for the show. The theme of the show this year is: "Living in the Country" so we made some sheep, yabbies, chooks, and horses. It's going really well but we still need to make a veggie patch, a forest and other bits and pieces like a sun, clouds, flowers etc... Can't wait to see it at the show!

We have been in contact with Better Beginnings to organise story / rhyme time and they sent us a kit. We still need to work a few details and find volunteers to read, but hopefully it will become part of our regular activities. If you are interested to come and read or sing, please contact us. It's only for babies and young children so the stories are short and simple and it shouldn't take longer than 30 mins. Tea or coffee will be, of course, provided.

We had a few quiet sessions this term too. We know it is winter and the weather is miserable on occasion, but the room is heated and we have plenty of toys, books, costumes and crafts to enjoy indoors.

Now, coming up this month: the 4th July will be bring and share morning tea before holidays, followed by an informal general meeting. We will recap what happened this term and discuss up-coming events. All members are welcome to attend and share their ideas or even volunteer to give a hand next term.

Remember we are **open on school holidays**, and we will keep working on the mural. Older siblings are allowed during this time.

And last but not least, new members from any backgrounds, nationalities, including dads, grandparents, uncles and aunties are welcome to join in all year long.

Playgroups are great for parents to meet new people, and for children to learn new skills and to socialise.

We are open to all babies and children (0-4 years old) and their carers on:

Thursdays mornings from 9.30am to 11.30am

We are at the old Kindy building, at the back of the CRC.

Bring a piece of fruit to share, hat and sunscreen.

It is \$2 per family per week (for coffee/tea, crafts, toys etc...)

and \$30 / \$15 (concession) per family for the year (covers insurance, membership to playgroup WA, invitation to regional events etc...)

Check out our Blarney's Calendar of Events on Page 17 or our Facebook page:

"Beverley Playgroup WA" to keep up to date with news and events.

For more information contact Alison on 0427 896 374

Information booklets are available at the Shire, CRC and Child Health Nurse

Proud member of



VOICE OF THE AVON 101.3 FM LOCAL PROGRAMMING

SUNDAY

- 8.00 – 11.00 Sunday Morning Coming Down—John
11.00 – 12.00 Sunday Classics
12.00 – 1.00 Soul and Inspiration - Susan
1.00 – 5.00 Blues
5.00 – 9.00 Metamorphosis – Bob

MONDAY

- 7.00 – 10.00 Monday Breakfast – Bob
10.00 - 1.00 Mustang Sally – Susan
4.00 – 7.00 Celtic Note – Joe
7.00 - 10.00 Classical Sounds - Chris

TUESDAY

- 7.00 – 10.00 Mornings at Seven – Milo
10.00 – 1.00 Around The World – Leila
1.00 – 5.00 Countrywide – Wally
6.00 – 10.00 Old Guys Rock—Terry

WEDNESDAY

- 10.00 – 2.00 A Little Bit of Everything - Joe
4.00 – 7.00 Legends and Locals - Mark
7.00 – 10.00 Back to the Future – Frank

THURSDAY

- 9.00 – 12.00 Mustang Sally – Susan
12.00 – 3.00 Kaleidoscope – Chris (*includes at 12.30, What's Up Doc?*)
6.00 – 9.00 Rock-n'-Roll Thursday – Milo

FRIDAY

- 7.00 - 10.00 Friday Breakfast - Bob
10.00 - 1.00 Discography - Tess
6.00 – 9.00 Friday Night Country - Milo

SATURDAY

- 6.00 – 11.00 Saturday Morning Variety Show – Terry
1.00 – 6.00 Saturday Mix – Graham
6.00 – 10.00 Saturday Jazz

Station Phone Number 9641 2422

E-mail: radio6ycr@hotmail.com

72 hours of local presenters each week.
Effective 17 May 2013

TV Antennas

UHF CB Repairs

Digital TV Upgrades

Reception Problem Solving

Qualified communications technician.

Reasonable labour charges.

Onsite service.

Repairs and installation to some car audio, car security, mobile phone handsfree.

Reversing camera systems for automotive and machinery.

Based locally in Beverley

Regional Antennas Plus

ALAN PRIMROSE

0408 002 965

BEVERLEY PLAYGROUP

JUNE / JULY / AUGUST CALENDAR OF ACTIVITIES AND EVENTS

- 6 JUNE** Craft for the show
- 13 JUNE** Craft for the show
- 20 JUNE** Craft for the show
- 27 JUNE** Craft for the show
Story / Rhyme time *
- 4 JULY** Bring and share morning tea
Craft for the show
General Meeting
- 11 JULY** Craft for the show (school holidays)
- 18 JULY** Craft for the show (school holidays)
- 25 JULY** Craft for the show
Story / Rhyme time *
- 1 AUGUST** Craft for the show
- 8 AUGUST** Craft for the show
- 15 AUGUST** Craft for the show / deadline for the mural
- 22 AUGUST** Father's Day Craft *
Story / Rhyme time*
- 29 AUGUST** Father's Day Morning Tea *

* to be confirmed

DRUG & ALCOHOL COUNSELLING

The Wheatbelt
Community Drug
Service Team will
be visiting
Beverley Hospital
fortnightly.

For appointments please phone
Jackie Darby on
96211 055.

Mews Electrical Service Lothar Mews Electrical Contractor

Lic. No. 000797

PO Box 429
Beverley WA 6304

Ph/ fax: 08 9646 1918
Mob: 0419 851 934





BEVERLEY AGRICULTURAL SOCIETY

PO Box 108
BEVERLEY WA 6304

For the very first time the Agricultural Society is sponsoring a prize just for entering the competition. **You could win an iPad mini.** This year all shed entries will go into the draw and one lucky person will win. The more entries you have the more chance you have to win.

iPad mini



So it's time to dig out the apron and bring out the family secret recipe handed down from grandma for marmalade or chocolate cake. Or maybe it's tomato relish - whatever your speciality – it's time to start practising so you will have the perfect product to enter into the show. If your talents lean towards the arts or crafts, now is the time to start creating your award winning *piece d' resistance*.

Photo fanatics now is your chance to shine. We have more classes than ever this year. Find those great shots you took during the year and fill in an entry form.

The schedule will be out soon so you can start to fill in those entry forms. Alternatively you can go online to www.beverleyagsociety.com to look at the schedule and download an entry form.

The street stall we held on Saturday June 22 helped raise funds for the show's free entertainment budget. So thank you to members for bringing in scones, cakes, jam, produce or any paperbacks you had that you were willing to go to another good home.

Teresa Reid

HANDY HINTS

For "would be winners" in the next Act – Belong - Commit Beverley show.

These tips were given by Aileen Hickey from the CWA who was a well known instructor and show judge.

Schedule: check the rules. The judge has to judge according to the schedule, so you must enter according to the schedule, e.g. 3 distinct varieties means 3 different varieties.

Collection: 2 or more is a collection

Preserves: no manufacturers' names, trademarks, etc. on jars and lids. If painting lids, do so well ahead, say 12 months, to prevent paint smell. No rust inside lids. Clean and dust jars. To present for judging, do not use wet cloth to clean jars, use paper towel. The best thing for polishing jars is an old stocking.

Jam: must be properly set. The jam must not move if you tip the jar of jam upside down. No bubbles in the jam. Labels should be in proportion to the jar, not wrapped around the whole jar. Place label 2/3 to 3/4 up the jar, not at the bottom of the jar.

Cakes: line tins properly. Prevent bubbles in the cake by mixing smoothly. No rack marks on top or bottom of cakes—this will lose points. If your cake cracks across the top it is usually because the mixture is too dry or oven temperature is not correct.

Scones: scones should be uniform in size with even colour and no sogginess.

Flowers: specimen: one only, no buds. Remove buds carefully. Bowl: width is 1½ times height. Opening is half the width. A container is anything that is not a bowl.

Arrangements: height - 1½ times above the vase. Present on a mat, doyley, etc.

GOOD LUCK WITH YOUR ENTRIES.

See you at the Show!!!



Beverley Agricultural Society presents the 137th 'Living in the Country'

Act - Belong - Commit Beverley Annual Show
Saturday 24th August 2013
Showgrounds on Forrest Street

Gates Open at 9am
Official Opening 12pm
Bar Opens at 11am
Fireworks at 6.30pm

SEE YOU AT THE SHOW!
This is a smoke free event

Entry: Adults \$10
Children & Pensioners \$5
Children under 13yrs FREE entry
when accompanied by an adult



**URBAN CREW,
Syd & Kim Outback Show**

Circus Challenge and
Strolling Magician with Balloon Creations

Exhibition Shed, Face Painters, Show Bags,
Animal Nursery, Sheep Dog Demo's

Humans vs Horses, Scottish Pipe Band
East vs West Tug-o-War, Equestrian Events

Sumo Suits, Bucking Bull, Bungee Run
Bouncy Castle, Kids Movies, Flight Simulator

Live Band, Vintage Cars & Machinery,
Sheep, Cattle, Wool and Poultry

The Sizzler & Super Nova
Climbing Wall & Side Show Alley

Food Stalls, Beverley Soaring Society Flyover,
and MUCH, MUCH More.....



FREE ENTRY for kids*
Proudly supported by State Government

Australian Year of the Farmer®

*When accompanied by an adult. Terms and conditions apply.





T.M. Hair Design



Family Hairdressing at reasonable prices..

Have you met Jodi yet? She comes to us with a wealth of experience in large salons with her favourites being cutting & colouring. She has a very deep knowledge of corrective colouring & loves consulting with clients to achieve new looks. So if you feel you need to try something different book in with Jodi. Her bubbly personality is such a treat. Marj has settled in very nicely with us & has enjoyed perming, setting & making new friends in the salon. Her years of experience tell in her excellent work & she is becoming a firm favourite with all who meet her. It has been a real joy having these two ladies to assist Jessica & Theresa & to ease the work load for them. We are so lucky to have so much choice & depth of skill with these professional ladies, to take care of our hairdressing needs, right here in the convenience of our LOCAL salon.

Just ask for whoever you'd like, when you book.

You will also find some appointments on Saturdays available.

And as always...**Bookings are essential.**

At Secrets Winter has arrived & brought with it chilly nights.

Don't be cold. We have loads of winter warmers to keep you covered. Gloves, scarves, coats, jumpers, cardie's, & gorgeous tops with trousers, jeans & skirts to match.

Watch out for new stocks of Possum products arriving soon. If you have tried them you know what I mean... if you haven't....you should. They are amazing.

Check out our mix & match Track/Leisurewear.

Designer Doona covers, Wool Doonas, Rugs & Underlay's, Sheet sets, individual pillow cases & sheets, flannelette sheets & pillows are available in all sizes.

New season bath towel range here now also.

If you can't find linen in the colour or size that you want, or other items you need, we can order in for you.

Just ask and our friendly staff who will be pleased to assist.

With your continued support we are able to support community groups.

So let's all work together for the benefit of our own town.

Call in to 100 Vincent St, or phone 9646 1122.



AMMOND FENCING

Jamie & Jen Hammond

PHONE: 0427 866 488

- **ALL TYPES OF FENCING**
- **KANGA LOADER & TRENCHING**
- **SLASHING**
- **FIREBREAKS**
- **PIPE LAYING**

YORK CHIROPRACTIC

MacLachlan Centre,
Trews Road, York

Clinic available every week
by appointment only.

Tel: 9641 1500

**Dr Alexandra
[Sacha] Browne**

B.Sc [Chiro] B.Chiropractic
Doctor of Chiropractic



**Max Hunter's
Firewood Supplies
Ph: 96461 236**



The Jarrah Bush Wood
is sold by the tonne.
Delivered in truck or
trailer loads.

BROOKTON PLUMBING

ABN: 37 675 595 336

**FOR ALL YOUR
PLUMBING MAINTENANCE
AND GAS FITTING NEEDS**

***PLUS SEPTIC WASTE
REMOVAL**

PHONE:

**SEAN 0413 480 543 or
NATASHA 0422 013 889**

PL: 7130 GF: 006947 SWR: T235

Beverley Tree and Garden Club



This month we didn't have the normal meeting but all gathered at Mescals' property to hear and see a pruning demonstration from Wes. He took us through the slightly different ways to prune fruit trees. Thank you Wes, for the thorough way you informed us. The information sheets from the Department of Agriculture are really helpful.

After several hours in the cold sunshine we adjourned back to the Dead Finish for our morning tea, where we all enjoyed the gardens. The potager garden in particular is looking great.

Members are reminded that next month we are going to Lisa at the Talbot Native Nursery.

We are going to car pool so will meet at the Dead Finish at 9.30am. Please bring your own cup and a chair if required.

SHIATSU HEALTH

Shiatsu is now available in Beverley by appointment
Shiatsu is ideal for deep relaxation, stress relief, anxiety, arthritis and assists in managing many health conditions and giving you an improved sense of health and wellbeing.

Pay only \$55 for your first treatment, regular price \$70
(Includes consultation and One Hour of Shiatsu)

For appointment or enquiry please call Michele Williams on
0438 461 513 or 9646 1513

Michele has a Diploma in Shiatsu and Oriental Therapies
and is a full member of the
Shiatsu Therapy Association of Australia
Health Rebates available from most Australian Health Funds

Northam Physiotherapy



**Northam 8am - 6pm
Monday to Friday**

**York Cunderdin Toodyay
By Appointment**

**Ph: 9622 5040
Fax: 9622 2800**

Email: northam.physio@westnet.com.au

PRIMARY HEALTH SERVICES available to the community of Beverley

You can refer yourself or your child to the following health professionals:

- ☑ **Child Health Nurse** - Phone 9646 3200 to make an appointment, Hospital Admin Staff will assist you in setting an appointment time (attendance Fridays).
- ☑ **Child / School Health** - Phone 9646 1210
- ☑ **Dietetics** - Phone 9690 1320
- ☑ **Occupational Therapy** - Phone 0429 466 224
- ☑ **Physiotherapy - a Doctors referral is required** - Please send to PO Box 142, Beverley or drop referral to the Beverley Hospital (attendance Thursdays)
- ☑ **Podiatry - a Doctors referral is required** - Please send to PO Box 142, Beverley or drop referral to the Beverley Hospital (attendance Fridays) **
- ☑ **Social Work** - Phone 9690 1320
- ☑ **Speech Pathology** - Phone 9690 1321

* Services are provided at the Primary Health Building, on the corner of John and Forrest Streets, Beverley. There may be a waiting time for services.

* These services are provided by WA Country Health Service and are free of charge. (Please note that the Podiatry Service is a private practice and is not free of charge - there is a fee at first consultation but the WACHS/Beverley Health Service do not get involved in taking fee payments - only assisting at receiving the referrals for appointment. The Doctor's referrals are usually faxed to the service provider, Como Podiatry, who contact the patient by phone and make an appointment).

* If you have any concerns about your own health or your child's health and development, please phone the relevant health professional to discuss your concerns. Alternatively, you can speak to the Child Health or School Health Nurse, or your GP, to discuss your concerns and to determine the most appropriate referral.

Avon & Central Primary Health - Promoting Healthy Lifestyles



The new face of Avondale Farm Project Association

Many thanks to our outgoing committee members, and in particular to Bruce Mann who has contributed greatly to Avondale management and projects over the last few years.

Incoming Chairperson

Sue Martin 0427 771 054

Secretary

Deidre Gowland 0448 790 045

Treasurer

Dina Barrett-Lennard 0417 927 435

Museum Coordinators

Duayne Haeusler 0417 956 031, and

John Hawke 9646 0760

Committee - John Pratt, Sue Eramiha and Michele Williams

Shire Representative – Peter Gogol

Our Community Heritage Grant – Museum volunteers workshops

This was the activity we ran last year where we got lots of new and enthusiastic volunteers involved in the machinery museum, and developed some information sheets on selected tractors. It was a federal government grant. The project is now completed and we are going through the process of acquitting the grant. Many thanks to all the volunteers involved. Your enthusiasm has made it a very worthwhile activity.

C4C Avondale Reserve Weeds management

This is another federal government grant that will be completed by 30 June 2013. We have had invaluable assistance and support from Wheatbelt NRM and SEAVROC. The Avondale Reserve is looking in very good condition, and our next low-key activity will be to restore the walk trail that has been neglected for several years. It will soon be open again for walkers. If your organisation would like to plan an activity at Avondale that includes a guided walk through the reserve please contact Dina 9646 1004 to discuss the possibilities.

WA Wildflower Society coming to Avondale

As a result of the 2012 survey carried out by the WA Wildflower Society the members have asked if they can return to observe the Avondale Reserve flora at a different time of year. They plan their next visit 13-15 September and have invited community members to join them. This would be a great opportunity to gain some knowledge of Wheatbelt Granite outcrop flora species, and meet some fun knowledgeable people who love to share their passion about our bush.

Museum busybee

Dave Shopland has fitted the water pump in the Massey 44K, so it is now a goer! The volunteers took the pre-heater off the KL Bulldog and Duayne has taken it to Northam for repairs. Duayne also organised some grey paint and bearings for Fergie so hopefully work will commence on re-assembling that shortly.

Application for appeal

The community group that supports Avondale projects, Avondale Farm Project Association, is sponsoring a National Trust appeal to be known as the "Avondale Appeal". Donations of \$2 or more towards the Avondale Appeal are tax deductible. A National Trust receipt will be issued. In the first instance the funds raised through the appeal will be used towards conservation of the 1890's stable complex at Avondale. If you wish to make a donation please contact Sue Eramiha 9646 0087 or sue.eramiha@bigpond.com

Events Coordinator

Avondale Farm Project Association are seeking expressions of interest from suitably experienced people to assist running events at Avondale in 2014. We are keen to start the process in a timely manner in order to take advantage of sponsorship opportunities. A stipend/honorarium to be discussed. For more information please contact Sue Martin, either phone: 0427 771 054 or email sue@chidlowkelpies.com

Great Southern Working Sheepdog Trials

Working sheep dogs were in action at Avondale on the weekend 22 and 23 June. Avondale was open to visitors on both days between 10am and 4pm. The machinery museum volunteers had the museum open, the picnic area and free gas BBQ's were also available. Several members of the Clydesdale Society brought their horses along and the public had a chance to see them in action. A full write up of the event will appear in the August issue of the Blarney.

Avondale Discovery Farm
550 Waterhatch Road
PO Box 74, Beverley WA 6304
P: 08 9646 1004
F: 08 9646 1002
M: 0427 477 734
E: dina.blennard@ntwa.com.au

Pictured below: Comet and his new friends. Seen at the sheepdog trials at Avondale.





Great Southern Working Sheepdog Trials at Avondale



Save this date - *Stomp for the stables*
A family fund-raising walk-a-thon is planned for Sunday 20 October 2013. Registered individuals, families and groups will walk, or run, from Beverley to Avondale. Participants can then enjoy a community lunch in the picnic area. Funds raised will go towards the Avondale Appeal. More information will follow, but please pencil the date in your diaries.

Rural Ambassador 2013

The Rural Ambassador competition is run by the Royal Agricultural Society of WA, and it's aim is to recognise outstanding young rural community members. Candidates are required to have some involvement in the show and portray their community in a positive manner.

The Annual event show cases a vast array of rural leaders who have the desire to represent and promote their community, their region and their state. Successful entrants are given the opportunity to meet and network with likeminded representatives from around the state, around the country and around the Commonwealth. If you or some one you know would like to nominate for this amazing opportunity, then feel free to nominate for the 2014 competition.

Beverley's 2013 Candidate



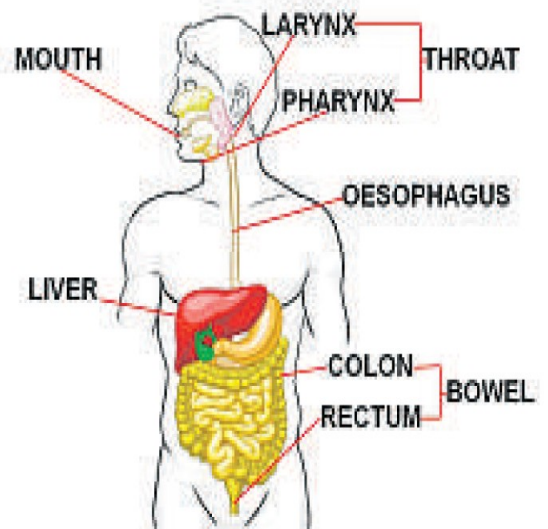
Local resident, Darci Miller is currently studying at University of Notre Dame and is a former student at both Beverley District High School and Presbyterian Ladies College. Her passion of living healthy has lead her to continue her studies and pursue a career in the health industry. Darci has started a local walking group to encourage good health and fitness. Her other passion is rowing and her rowing eight team came second in the national state championships. Darci was raised in Beverley and her family have farmed in the district for many years. She is an outstanding role model and a perfect example of a next generation rural leader. We all wish Darci the best of luck at the upcoming judging day.

ALCOHOL AND CANCER

Evidence shows that drinking any amount of alcohol will increase your risk of developing cancer.

Alcohol and cancer risk

- Alcohol is classed as a group 1 carcinogen, which means that alcohol use is a known cause of cancer.
- This is the highest carcinogen rating and categorises alcohol with tobacco smoke and asbestos as being known risk factors for cancer.
- Even small amounts of alcohol increase cancer risk, but the more you drink, the greater the risk.
- There is no evidence that alcohol protects you from any type of cancer, and there is no difference between different types of drinks (e.g. beer, wine, and spirits).



Facts and figures

- Each year, approximately 5070 new cases of cancer are related to long-term alcohol use in Australia.
- In WA alone, more than 100 people die due to alcohol-related cancers each year.
- Alcohol increases your risk of cancer of the mouth, throat, bowel, oesophagus, liver, and breasts.

How much should I drink?

- Cancer Council Australia (CCA) recommends that to reduce your risk of cancer, you should limit your alcohol consumption.
- For individuals who choose to drink, CCA recommends no more than two standard drinks per day.
- One standard drink equals:



- It is also recommended that you avoid drinking more than 4 standard drinks on any one occasion. Having at least one or two alcohol-free days a week might help avoid the risk of dependence.

For more information you can visit the Cancer Council website <http://www.cancer.org.au/home.htm>, email Kerry Hug, Convenor of Willetton & District Local Drug Action Group at kerry.hug@det.wa.edu.au or visit the Local Drug Action Group website www.localdrugaction.com.au for RADAR information via the Bulletin Board.



LOCAL DRUG ACTION GROUPS INC.
An initiative of Local Drug Action Groups Inc supported by





BEVERLEY OSCARS

REDBACKS REVUE NIGHT

SATURDAY 27th July



Beverley Town Hall 6:30pm

Dress: Oscars "Red Carpet" Formal
Tickets \$30 per person

includes canapés on arrival, light supper and all night great local entertainment
Tables of 10 can be reserved when purchasing tickets otherwise general seating available on the night

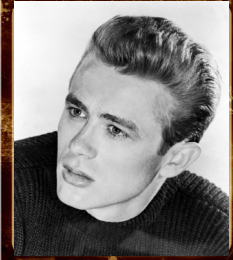
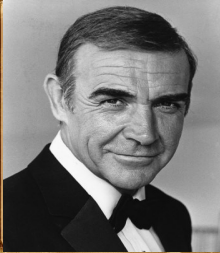
Bar Facilities available

Tickets available from:

Chantelle: chantellemeade@bigpond.com 0429 418 576

Ali: alilewie@bigpond.com 0417 947 955

Kelly: piperk83@live.com.au 0408 952 790



Western Australian Wyandotte Fanciers Association Inc.

Calling / Invite all members and non members to join us and exhibit your Wyandotte's.

Western Australian Wyandotte 21st Annual Show

Date: Saturday 7th September 2013

Venue: Beverley Poultry Shed (Showgrounds)

Public viewing welcome and free

Donations of trophies/sponsor most welcome and very much appreciated.

Annual meeting will be held after judging and new President, Secretary, Treasurer etc need voting in for this club to continue.

Show Coordinator: Gaenor Carter 9646 1003

Assisting Coordinator: Kaylene Watts 9295 2946

KARRADALE LIVESTOCK TRANSPORT YORK LIVESTOCK TRANSPORT ABN 64 054 007 721

- **Servicing Beverley, Brookton, York and all surrounding districts**
- **Transport of Sheep and Cattle available**
- **Members of LTA and support the local communities**

If you need your sheep or cattle transported please give us a call.

Peter Tomeo 0428 481 281





FREEMASONS TAVERN



WHAT'S HAPPENING AT THE TAVERN

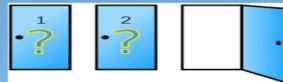
STEAK
OR
FISH
SUNDAYS
\$12
LUNCH OR DINNER



Open Jam - Sunday Session...

The Taverns Jam Session is on again
Sunday 14th of July from 4pm
PA Supplied, bring own instruments.
Please call Greg on 96461094 for more info.
Thanks to the all muso's who turned up to the last session, between guitar players, bass, drums and bagpipes, the 'Sound of Music' was enjoyed by all!

THURSDAY'S
PICK-A-BOX
5.30 - 7pm
(drawn at 7pm)



For every drink you receive a ticket and go into the draw and win a PRIZE!



Celebrate Christmas in July with a yummy three course festive feast!

Saturday 6th July
Saturday 13th July - Limited
Saturday 20th July

Mulled wine, Glaze Ham and Christmas pudding Christmas comes early at the Freemasons Tavern! Every Saturday in July, the Tavern is adorned with the Christmas Spirit, festive carols and maybe (if you are lucky) even a visit from Mr or Mrs Clause's. Christmas is all about over-indulging and guests who come to the Tavern in July can enjoy Christmas themed dining throughout the whole month. Enjoy many Christmas delights with everything from smoked Turkey, Glazed Ham to warm Christmas pudding topped with Brandy sauce. Don't wait until December - experience a Christmas in July at the Tavern, the perfect excuse for a night of indulgence.

\$30 per person
Please call 9646 1094 for Bookings

WEDNESDAY'S

"PUB QUIZ ANDSCNITZEL NIGHT"

Looking for a fun, free way to spend a relaxing Wednesday night! Well the Tavern is the place to be! Get a group together and get quizzical at our Wednesday night Pub Quiz's, There's prizes to be won, the fires are lit to keep you cozy, and to top it all off its Schnitzel Night with your favorite topping! Quiz starts at 7pm.....

Natway Furniture & Constructions

ABN: 62 824 726 465

Wayne & Natalie Ashworth

Qualified
Carpenter & Joiner
Tradesman

- General Building Work
- Furniture Construction & Restoration

27 Brooking Street,
Beverley

Phone:
08 9646 0159

Mobile: 0417 973 415
(Wayne)

Mobile: 0429 491 039
(Natalie)



BEVERLEY BOWLING CLUB CELEBRATING THEIR 100TH YEAR

The Beverley Bowling Club is seeking any memorabilia or ideas on the best way to commemorate our upcoming 100th year anniversary.

If you can assist with any information or items that can help it would be greatly appreciated.

Please contact Sheridan, Phone: 0427 975 211 or Email: louis-sheridan@westnet.com.au

BEVERLEY COMMUNITY PARALEGAL INFORMATION SERVICES

UPDATE

I refer to my correspondence to Prime Minister Gillard on concerns that I highlighted on the plight of needy and disadvantaged Australians – below is an excerpt from a letter I received from the Honourable Jenny Macklin MP addressing my concerns:

...”The Government is committed to supporting low-income Australians and those most in need, delivering substantial tax cuts and reform to Government payments, including increases in pensions and strengthening Australia’s comprehensive system of family support.

Pensioners are benefiting through improved indexation, linking pension to the prices of goods and services that pensioner households actually buy and linking the pension to wages. Additionally, holders of Pensioner Concession Cards and Health Care Cards benefit from reduced costs for health services and prescription medicines, and various state and territory government concessions for property and water rates, energy and telephone bills, public transport fares and vehicle registration.

Through the Household Assistance Package, the Government is helping families, seniors and individuals meet their expected cost impact from the introduction of a carbon price. The package includes:

- ongoing increases to regular government payments for families, seniors and individuals to commence between March 2013 and January 2014, depending on payment type;
- tripling of the tax-free threshold to \$18,200, which means tax cuts for all taxpayers earning under \$80,000, from 1 July 2012; and
- an initial payment for families and parents, seniors and individuals receiving government payments, paid from May 2012.

Working to support families and children, the government has invested in family support payment to low and middle-income households, support for new parents, support for childcare and help with schooling costs for children.”.....

Regards
Mal Roberts
BCS
08 9646 1932

GYM MEMBERSHIP



Don't forget,
Gym Memberships can be
obtained from the
Shire office or from
www.beverley.wa.gov.au.
Beverley Gym
The Old Courthouse,
Vincent St.

RICHO'S EARTHMOVING PTY LTD

New to the Beverley area

BOBCAT, Excavator and Six Wheel Tipper Hire

Specialising in

- + **House Pads**
- + **Shed Pads**
- + **Gravel Verges**
- + **Drives**
- + **Landscaping**
- + **Pool Excavation**

30 Years Experience

Free Quotes contact

Phil Richardson

M: 0413 122 262

E: richardson-family@bigpond.com



NEED PRACTICAL TRADE ASSISTANCE?

Contact *Design-Man*

(Design and Manufacturing Services)

Solving a range of practical needs and problems.

Specialising in:

- ✓ Kitchen renovations
- ✓ Shop fitting and modifications
- ✓ Furniture restoration
- ✓ General carpentry
- ✓ Alterations & installations
- ✓ Metal based fabrication
- ✓ Motorhome and caravan fitouts
- ✓ Pergolas, Decks and Gazebo
- ✓ Designing and planning

Guy Slingerland

0403 602 335

Don't let the winter months get the better of you and lose 5kg's or more in 30 days

*No Rigorous Exercise

*No Calorie Counting

Eat the Food you love

*Gain Nutrition

*Medically recommended

*Easy & Safe

30 Day money back guarantee

It works I lost 9kgs in 8 Weeks

Phone Ellen Maddock
(Mukinbudin)
on 0429 471 136



2013 Show Schedules are out now.
Entry forms can be downloaded at
www.beverleyagsociety.com



Local Businesses decorating their shop fronts for the show with "living in the country" theme there are materials at the Newsagency.

REGIONAL REVEGE

Bringing Nature Back

TREE PLANTERS

For broad acre planting large or small
Ring Tim & Angie Yeadon on 9646 1656 for a free quote.

brooktonhounds

A COUNTRY RETREAT FOR YOUR BEST FRIEND

Brookton Hounds Pet Boarding:

- ✿ Wide open spaces
- ✿ Huge enclosures
- ✿ Family run business
- ✿ Fresh country air

Contact Murray and Liz on:

t (08) 9642 1875 m 0409 103 166

www.brooktonhounds.com.au



Dead Finish Museum

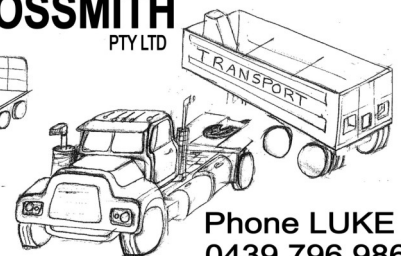
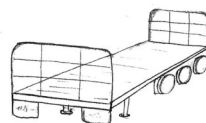
A collection of historical memorabilia



*Open Sundays 11am to 3pm
March to November*

M & L GROSSMITH

PTY LTD



- * General Freight
- * Hay
- * Wool
- * Sand Gravel
- * Bulk Grains & Fertiliser

Phone LUKE
0439 796 986
9646 1983
PO Box 342
Beverley WA

CRANA Aboriginal Corp. Inc.

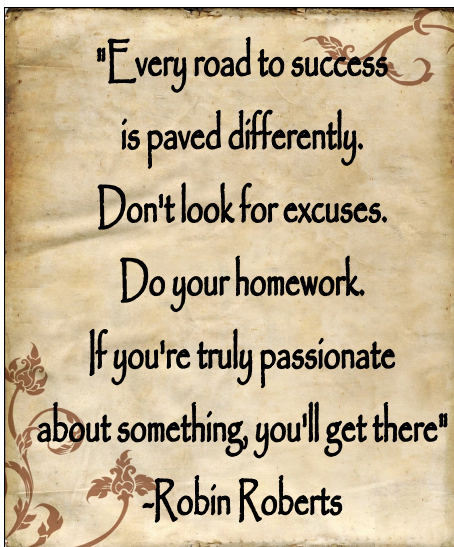


Under authority from the CRANA Aboriginal committee, Mal Roberts has written to:-

- i. Mr Brendan Grylls, the Minister for Regional Affairs regarding the legal issues to erect a building on the Beverley Aboriginal Reserve.
- ii. Copies of the above correspondence was also forwarded to the Minister for Aboriginal Affairs.
- iii. This matter will be further discussed with Mr Stephen Gollan, CEO Shire of Beverley, as the Shire are the caretakers for the Crown Land in question.

M. Roberts
Adviser

M. Henry
President



Beverley Youth Centre

Beverley Youth Centre runs every Friday night between 6pm to 10pm and is for 10 year olds to youth.

Any enquiries please contact Youth Group Coordinator

**Lyn Kay on
0411 355 811**



LOOKING FOR THE KEYS TO A RICHER LIFE?

- Are you a housewife and a mum?
- Have ALL of your dreams come true?
- Do you want more from your life?
- Do you sometimes feel as if life has let you down

International award winning singer/songwriter. motivational speaker

KELLY NEWTON-WORDSWORTH

is coming to Beverley to run her one-day workshop on

HOW TO BE A HAPPY HEALTHY HEAVENLY HOUSEWIFE AND A MUM WITH A "MILLIONAIRE MIND"!!!!

Kelly has been singing internationally since 1997. Learn Kelly's secrets as to how she has managed to sing for millions of people, (including the King of Thailand!), whilst creating a happy marriage and family. Kelly has been married for 25 years and will share the amazing results she has achieved by continuing to search for answers to daily problems that she has found in every home she has visited all over the world.

Simple and ridiculous situations with children and parents fighting continuously over such small issues as "Who is going to do the dishes?" With the problems that many people are going through in everyday life, tiny arguments can be the cause of major tragedies such as divorce or even as dramatic as suicide. Australia has the highest rate of suicide in boys to men from the ages of 18 to 25 in the world! Hear her ideas for solutions to how you can make a difference before it is too late!

Kelly has discovered powerful ways to change your home life, create more time in the day for looking after yourself better, bringing exponential happiness, health and wealth to your daily life!

Come along and find out for yourself some of her secrets to having an awesome life!

Date: Wednesday 31st July, 2013 **Time:** 8.30 registration for 9am start **Cost:** \$35 (First 20 people to register can bring a friend for **FREE!!**)

Venue: To Be arranged **Contact:** Newtowne Productions: newtone@treko.net.au

Phone: **98851181/ 0438851515** Fax **98851165**

WD & LM SLEEP

Kokeby Concrete

Specialising in

**Concrete, Sand pads, Bob Cat Hire, Site and Block
Cleanup (can organise grano workers)**



P: 08 9646 4163 M: 0429 461 314

MAKE A STATEMENT.....MAKE A DIFFERENCE

Most residents will be aware of the destruction which took place over the Easter Weekend, destruction of private and community property, stealing from visitors to our town.

What a wonderful welcome to Beverley

Our problem is that this behaviour is not a very good example of attitude or respect of our young; it only takes a few to bring down the reputation of the youth of Beverley. Are you a concerned and responsible parent, resident, do you want this to change?

I visited our local IGA store recently and over heard three local ladies discussing the lack of respect among the youth of our community, "the police just don't seem to be making any difference to the destruction and the total lack of respect shown by the kids, for community property."

Is this how you view the situation within our town?

Well I'm glad you are concerned, but hold on a minute, are you prepared to stand up and make a difference?

Our local Police are only able to do so much, they aren't able to reach a successful outcome without community support, that's right, if you see and offender actually carrying out an offence are YOU willing to come forward and make a statement, become a responsible resident/parent, assist our local Police to make Beverley a safe and welcome town to not only residents but to our visitors as well.

The more we back away and think, "We don't want to get involved," the more we are empowering these offenders. All I ask is that if you are a witness to an offence please come forward, be prepared to make a statement, be prepared to make a difference, don't be intimidated, be proud to do the right thing.

Remember not all of the Youth in our town lack respect for others and their property, however as you must realise it only takes a small minority to establish the wrong opinion, and create a bad reputation for others.

As a parent, do you know where or what your child is doing at night? I'm sure you do, but, sometimes it pays to check, just to make sure they're safe.

If you are a young person who has seen a group of kids or just a kid doing something that you feel is very wrong don't be scared to come forward and report it to an adult. Don't let others intimidate you; threaten you, report that too, it is the only way that we as responsible people can bring a stop to the wrong behaviour happening within our community.

I ask that you please take on board that our police need the co-operation of the community to prevent and stop these offenders.

I would like to take this opportunity to thank our local Youth Group co-ordinator Lyn Kay and her helpers for providing a much needed service to the Youth of our community. It is through services such as this that we have the opportunity to educate our Youth in social behaviours, respect for each other and instil a pride in their community.

G. Courtney



York Estate Agents – (Beverley Division)

Local Residential & Rural Experts, honest and caring for your requirements. Whatever you are looking for, be it your first home, or retirement home, a hobby farm, a dream block of land or investment.

We can help with a can do Professional Attitude.

Contact the Team at York Estate Agents for all your Real Estate requirements. Office: 72 Avon Terrace York WA 6302

Residential: **Helen Stubing** 0407 964 611 Your Local Sales Rep

Rural: **Michael Bawden** 0403 268 158 FREE Appraisals

Rentals: **Jenette Callaghan** 0418 929 011

Office: T: 9641 1335 F: 9641 1334

Helen: Email: stubing@oceanbroadband.net

Office: yorkfn@westnet.com.au

Web: www.yorkfn.com.au

**ROYAL ANTEDILUVIAN ORDER
OF BUFFALOES**



GLE (Inc)

QUAIRADING BEVERLEY NO.163

We meet the first Wednesday of every month at the Masonic Lodge, Hunt Road, Beverley

*The objects of our order are
Philanthropy and Good Fellowship.*

For more info contact
Bill McDonald on 9646 0746



THE BLUE LINE

Beverley Police Station

57 Hunt Road, Beverley WA 6304

Hello All,

Well Darrell is still on leave at the moment and I am at the helm so to speak for another week, Darrell will be handing the office over to Karen Berry at the end of next week, I am sure that everybody will remember Karen from her previous spots at our town.

We have recently had reports of youths in and around the public toilet and railway station areas of the town, please keep an eye out for unruly behaviour and report such matters, damage has been caused on previous incidents and we would all, I am sure, like to keep on top of this to stop it happening in the future.

Again on another note, graffiti is a criminal damage offence and is serious, in a small town such as ours why would we stand for such vandalism, recently a tin of paint was stolen from the back of a workers vehicle at the bottom pub and was used to graffiti tags of ROB, DAD, and RISE or ROSE on the wall of the vacant shop at the corner of Forrest and Vincent street, if there are any witnesses to this offence please come and see me.

The Blue Line always seems to be on a serious note, so here is something not so serious.



Stay safe, be good and please keep the crime down,
Cheers
Darrell and Ian

beverley.police.station@police.wa.gov.au

Ph: 9646 3333



CARPET & LOUNGE SUITE CLEANING

It's Spring Cleaning Time!

- * Carpets Cleaned
- * Lounge Suites Cleaned Like New
- * Car Upholstery & Carpets Cleaned
- * House Total Clean When Moving
- * Fire & Water Damage Clean Up

- * Stripping & Sealing Floors
- * Vinyl
- * Wood
- * Slate

Phone Colin Today on
0417 971 786
Email colgrant1@bigpond.com



BRIDGE - Card Game

If you would like to come along and enjoy a game of bridge. We welcome all new members to join us.

WHEN: Mondays
TIME: 1.00pm
WHERE: CWA Hall

Steve's I.T. Service
 Mob: 0407 853 483
 Servicing Beverley and the Avon region



MS and Networking
 Certified technician

Onsite or remote support

Friendly & Prompt service
 for all of your computing
 needs

ABN: 80 341 315 441

No fix no charge, hardware faults
 excepted. All aspects of PC's,
 Mac's, smart phones and
 networking supported.
 New PC's built to suit.
 20 years experience.
 Stationary supplies.
 OKI Printer sales & support
 Representative for Wheatbelt.

BILL CHAMBERS

**Chartered Accountant
 &
 Registered Tax Agent**

Tax return preparation

Financial and accounting
 advisory services

Office hours:
 Wednesday
 9.15am - 5.00pm

129 Vincent Street, Beverley
 9646 1566 (Monday - Friday)

**For all your air conditioning needs
 contact:-**

Robert & Nathan Chamberlain

Avon Auto Air

Phone: 08 9647 2070

Mobile: 0428 472070

We are now accredited and
 registered to install and commission **Split
 System Air conditioners.**



**Unique Strokes W.A.
 Painting & Decorating**

Reg. No. 4236

ROB BAIN

QUALIFIED LOCAL TRADESMEN

For Guaranteed Traditional
 Workmanship & Prompt Free Quotes

Phone: 08 9647 2012

Mobile: 0418 904 013



**Remote Area
 CONTRACTING SERVICES**

Water Supply
 Windmills & Accessories
 Solar Pumps:
 Sales, Service, Installation
 Fencing & Yards
 Trenching & Polypipe Laying

Agents for:
 Mono Pumps, Ebara Pumps and
 Pressure Systems

**Remote Area Contracting
 Services Pty Ltd**
 PO Box 638, York WA 6302
 Tel: 9643 1047 Fax: 9643 1039

Errol Squire
 0438 682 687

Dalene Davies
 0427 021 146

**AVON DRILLING
 SERVICE**

Mick Lewis
 Ph: 9572 7828
 Mob: 0427 814 055

Brenton Legg
 Mob: 0404 708 979

**WATER BORES
 BORE DEVELOPMENT
 MINI EXCAVATOR HIRE
 POST HOLE DRILLING**



The staff and committee at the Beverley CRC are pro active in achieving set goals annually, the outcomes and achievements from the last twelve months at the centre are highlighted below. With a new business plan in place the next twelve months at the centre are set to be busy with many new developments being undertaken. If you would like to join and be involved with the CRC why not become a member more details of the AGM on page 5.

Outcomes / Achievements from 2012/13

- 1000 brochures designed, printed and distributed at the annual Caravan and Camping Expo 2013, promoting “What’s on in Beverley Easter 2013”. As a result the visitors to the town over this period had increased from previous years.
- Coordinator invited and participated on the discussion panel at the State CRN Network Conference in Busselton 2012.
- Trainee of two year’s Gemma received the ASTI Business Trainee of the Year for the C Y O’Connor TAFE Awards in Northam.
- CRC Hosted Wild Women of the West Seminar 2012 to a sell out crowd of 200. The theme was “Stop and Smell the Roses” Keynote speakers Karen Tighe, spoke about living with her partner Glenn Mitchell who suffers from depression, her coping mechanisms, where she accessed help and strategies for the future. Jenny Morris, Olympic Gold Medallist spoke about balancing work, family and sport. Giving the audience her take on striving to achieve the ultimate goal of Olympic gold and the perseverance needed to attain her result. Hon. Mia Davies MLC joined in the day by reading an article by WA based author Fleur MacDonald. Each guest received a copy of Fleur’s latest novel in their gift bag. The aim of this seminar is to inform rural women of services available to them in the country, networking with peers and a quality day out.
- Beyond Gardens seminar in Beverley attracted a good crowd for the evening, further promotion of the Westlink broadcast increased the visitors to the centre to view the series.
- CRC successfully partnered with Shire of Beverley to compile and format local monthly paper **Beverley Blarney**.
- Increase in room for hire use, since the refurbishment of the training room.
- Completed Microsoft and Internet Training for community and local businesses.
- Employment of new trainee Anne Woods, who will be completing Certificate III in Tourism (Visitor’s Centre)
- Renewal of traineeship for Christine Rayner who will be completing Certificate III in Accounts administration
- Installation of new WiFi system, coverage includes Caravan Park area.
- Purchase of new photocopier for the centre, replacing the 4 year old model.
- Negotiations of use of the Playgroup area complete and CRC has since installed new blinds and painted the area. Extra area to be used for workshops, room hire, meeting etc.
- Successful grant application to undertake Feasibility Study of the community to ascertain the future use and facility requirements of CRC.
- Engineer’s report of the building received from the Shire of Beverley, regarding flooring of the centre
- Increase in distribution of the Beverley Bulletin Newsletter, further increase to the email distribution listings.
- New flags for the Centre received and have been used for special events held by the centre.
- CRC has taken over, updated and refreshed the local Community Directory, distribution to the whole district.
- Developed partnership with Wheatbelt Natural Resource Management



Beyond Gardens Roadshow attracted a good crowd of to the town hall



Olympic Gold Medallist Jenn Morris and Hon. Mia Davies at the Wild Women of the West Seminar 2012



Anne Woods (Tourism Trainee) Christine Rayner (Finance Trainee)

Beverley Netball Club Pizza Night

19th July 2013

Beverley Lesser Hall, 5pm - 9pm



In town delivery available
just a gold coin donation

Toppings available

Meatlovers Hawaiian

BBQ Chicken Supreme Vegetarian

Garlic Bread also available

Order forms (Page 38) and more information available from
Avon Trading, Beverley Post Office and Beverley CRC

SAMBA

(Card Game)

Any ladies interested in
learning to play the card game
“Samba” would be most
welcome.

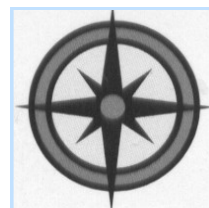
WHEN: Saturdays

TIME: 1.00pm

WHERE: CWA Hall
Dawson St.

Afternoon Tea provided
Enquiries 9646 1271

All types



All areas

ALLROUND CONCRETE

**SHED FLOORS, DRIVEWAYS, FOOTPATHS, HOUSE SLABS,
SILO PADS, FERTILIZER/GRAIN/SUPA SHEDS**

ROBBIE HIGGINSON

MOBILE: 0427 384 977

HOME: 9641 2459 FAX: 9641 2339

ABN: 26 997 512 874

PO BOX 345 YORK WA 6302

BUILDER / CARPENTER

- New Work
- Additions
- Alterations
- Roofing and gutters
- Decks and pergolas
- Gyprock and flushing
- Fencing
- General property maintenance

All work by tradesman with
25 years experience

Phone Dean: 0429 649 781

Countryside Memorials

- Cast Stone
- Granite
- Marble
- Plaques

Added Inscriptions
All Repairs and Restorations



25 YEARS PROFESSIONAL EXPERIENCE
FREE DESIGN AND QUOTE

Servicing All W.A. Country Areas

9622 5544

OXTER SERVICES

www.oxter.com.au

oxter@westnet.com.au



To view or download a
full colour version of the
Beverley Blarney go to
www.beverley.wa.gov.au



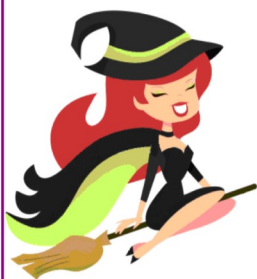
AUGUST BLARNEY DEADLINE

Friday 23 July at 4.00pm

Late submissions
will NOT be accepted

WITCHES BRITCHES

Fancy Dress Hire



- Quality, Clean Costumes
- Wigs & Accessories
- Sales

"An Avon District Local Business"

- ❖ Santa Suits
- ❖ Halloween
- ❖ 20's, 50's, 60's, 70's
- ❖ Medieval

Phone Wendy: 0419008123

ABN: 23 504 881 088



Servicing Beverley, Quairading
and Brookton

For all your Electrical & Solar needs
Please call

KARL SMITH

0429 887 535

PO Box 2 Beverley WA 6304

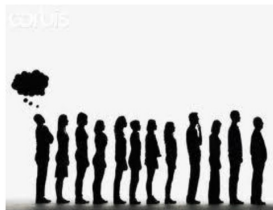
Email sales@beverleyelectrical.com.au

EC 006578

ABN 86 966 138 620

AT THE BEVERLEY SHOW

WOULD YOU RATHER QUEUE?

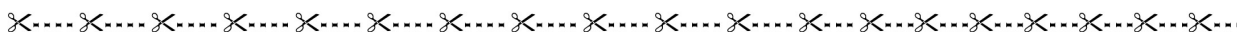


OR GO STRAIGHT THROUGH?



**BEVERLEY SHOW MEMBERS RECEIVE:
MEMBERS ACCESS ENTRY ON SHOW DAY (FOR MUM, DAD AND ALL THE KIDS).
FREE AFTERNOON TEA ON SHOW DAY.
ACCESS TO A RANGE OF FREE ENTERTAINMENT ON SHOW DAY.**

Normal Show Day entry prices are \$10 adult and \$5 children (under 16 years) and pensioners ie \$30 for Mum, Dad and 2 kids. Simply fill out the form below and mail it (with a \$20 or \$25 cheque/money order made out to "Beverley Agricultural Society Inc." enclosed) to PO Box 108, Beverley WA 6304.



Beverley Agricultural Society (Inc) Membership Form

Tandem Ticket - \$20 (2 adult and children under 13 years)

Family Ticket \$25 (2 adults and children under 16 years)

1. Please fill out your contact details so that we may keep our database up to date.

Name

Address

Contact Phone

Preferred Email

2. Please indicate your payment method.

EFT BSB – 016 540 Account - 2599 03452

- ❖ Please include your Membership name in the notation/message/reference field.
- ❖ Please continue to complete this form and post back to the above address.

Cheque Made payable to 'Beverley Agricultural Society Inc.'

- ❖ Please write your Membership name on the back of the cheque.
- ❖ Please include your cheque with this form and post back to the above address.

3. Tickets required?

Adults (max 2) _____ **Children** _____

4. We will be mailing the tickets to your contact address in June. Would you like any of the following included with your tickets (please circle)?

Show Schedule 2013 YES NO

Receipt of payment YES NO



FIREWORKS DISPLAY SHOWDAY

We would like to advise the Beverley community that following the annual show day there will be the annual fireworks display. The fireworks display will take place between 6.30pm - 6.45pm. Our experience is that often pets, dogs in particular, can become frightened by fireworks and behave in an out of character manner.

As such, we have put together the following tips for dog owners to assist your animals' well-being and safety during this time:

- Ensure your dog is securely contained for the 15 - 20 minute fireworks display.
- If you are leaving your dog at home alone outside, check that all fences are secured and well maintained.
- If you are leaving your dog at home alone inside, a laundry room or similar enclosed space can provide a familiar, safe and secure environment.
- If you are going out for the evening, you might consider taking your dog to a family member or friend's home to be cared for, or even have someone come and keep your dog company.

Please Note:
PETS ARE
NOT ALLOWED
ON THE OVAL AT
THIS EVENT



dtworx

local carpentry service

Lindsey Doyle

Ph: 0422 300 338

PO Box 450 BEVERLEY fax: 9647 2010 email: dtworx@westnet.com.au

Bottlemart express HOTEL BEVERLEY

For a great range and choice You better get to Bottlemart

With a choice of

- 80 Different Pre-mixed drinks cold and ready to drink, available in singles, 4 or 6 packs and Cartons
- 37 Different Beers cold and ready to drink, available in singles, 6packs and cartons
- 16 Different Ciders cold and ready to drink, available in singles, 4 or 6 packs and cartons
- 48 Different Bottles and 11 Different Casks of White Wine cold and ready to drink
- 20 Different Sparkling Wines cold and ready to drink
- 65 Different Bottles and 5 Different Casks of Red Wine
- 10 Different Fortified Wines
- 58 Different Bottles of Spirits
- Plus Bargain Bin for wines

**Specials Every Week
The Choice Is Yours
Hotel Beverley Still The Top Pub**



**Anglican Parish Beverley/Brookton
Times for Sunday Services for:
July 2013**



DAY	DATE	CHURCH LOCATION	TIME AM	SERVICE
Sunday	07 July	St Mark's Brookton	8.30am	Holy Communion
Sunday	07 July	St John's in the Wilderness the Dale	10.30am	Holy Communion
Sunday	14 July	St. Mark's Brookton	8.30am	Morning Prayer
***Sunday	14 July	St Mary's Beverley	9.00am	Prayer, Praise & Proclamation
Sunday	21 July	St. Mark's Brookton	8.30am	Holy Communion
Sunday	21 July	St. Mary's Beverley	10.30am	Holy Communion
Sunday	28 July	St. Mark's Brookton	8.30am	Morning Prayer
***Sunday	28 July	St. Mary's Beverley	9.00am	Prayer, Praise and Proclamation
Sunday	04 Aug	St. Mark's Brookton	8.30am	Holy Communion
Sunday	04 Aug	St. Mary's Beverley	10.30am	Holy Communion
Sunday	04 Aug	St John's in the Wilderness the Dale	10.30am	Prayer, Praise and Proclamation



CATHOLIC CHURCH

Service in Beverley
8:00 am every Sunday at
Beverley Sacred Heart Church
Lukin Street, Beverley

**THE RELIGIOUS
SOCIETY OF FRIENDS
(QUAKERS)**

Beverley Friends Meeting
Old Catholic School Rooms
Dempster Street

**Sunday 10:30am -
Meeting for Worship**

For more information & enquiries
phone 9646 0575.

*****Please note time change from 8.30am**

Parish telephone is: 9646 1112
Correspondence to: PO Box 292, Beverley WA 6304
All Mail for St Mary's Society,
please address to: **PO Box 292, Beverley WA 6304**



**BEVERLEY HOME
CHURCH**

Beverley Home Church
Meets on the 1st and 3rd
Saturday of each month.

We welcome all to share in
Christ Centred Fellowship
with Terry and Glenda.

At 4.00 pm closing with a
fellowship meal

At 16 Barnsley Street,
Beverley

Enquiries – call 9646 0546



**The Church of
United Spiritualism of Australia**

Schedule of Services for 2013

Healing at 2.30 pm and the Service commences 3.00 pm

Jan 13th
Feb 10th
Mar 10th
Apr 14th

May 12th
July 14th
Aug 11th
Sept 08th

Oct 13th
Nov 10th
Dec 08th

Please contact Rev Irene on 9646 0470 for details of venue as this may vary.

BEVERLEY HOSPITAL AUXILIARY OP SHOP

Donated, clean clothing is very much appreciated. No electrical appliances, underwear or bathers accepted. Donated items may be left at Avon Trading please.

The Op Shop is open every Friday between 2:00pm and 4:00pm.

OP SHOP ROSTER JULY 2013

- July 05 Ingrid Bell, Jan Howell, Anna Mally
 July 12 Anne Szczenski, Mary Blechyden, Gracie Courtney
 July 19 Amanda McLean, Marree Hutchinson, Rhonda Seymour
 July 26 Leita Barrett-Lennard, Joyce Ridgway, Barbara Broun
 Aug 02 *Dorothy Barrett-Lennard, Dalene Davies, Pam Aynsley*

Val Moad
 Hon. Secretary



BEVERLEY CHILD HEALTH CLINIC

Clinic is open Fridays for appointments, home visits and/or immunisations 9am to 4pm



For appointments or enquiries please phone the hospital on 9646 3200 or 0427 901 321.

LISA WAY — Child Health Nurse



BEVERLEY DIABETES SUPPORT GROUP

Meets at the O.T. Room, Beverley Hospital
WHEN: 2.00pm til 4.00pm

The support group will meet every second Tuesday of the month.
 Contact Sylvia Seddon on 9646 1072

Type one and two diabetics of all ages are encouraged to attend as well as other members of the public interested or suffering from diabetes. Please park on the road or behind the St John Ambulance Centre.

Beverley Earthmoving Contractors

40 years experience in all aspects of Earthmoving.

One stop shop for all your Septic Systems.

Supply & Install
 Plumbing Licence PL 5829 Gas Fitting Licence GF 7422

ALL ASPECTS OF EARTHMOVING

House Pads Site Cuts

Block Clearing Laser Levelling

Service Trenches

To Shire and engineer specifications.

SAND SUPPLIES

Metal Gravel

BULK HAULAGE

Truck and Dog Trailer Backhoe 315 SE John Deere

Side Shift Extender Hoe

Bob Cat Loader

Forklift Post Hole Borer

General Freight ingage and over width loads credited.

Phone:

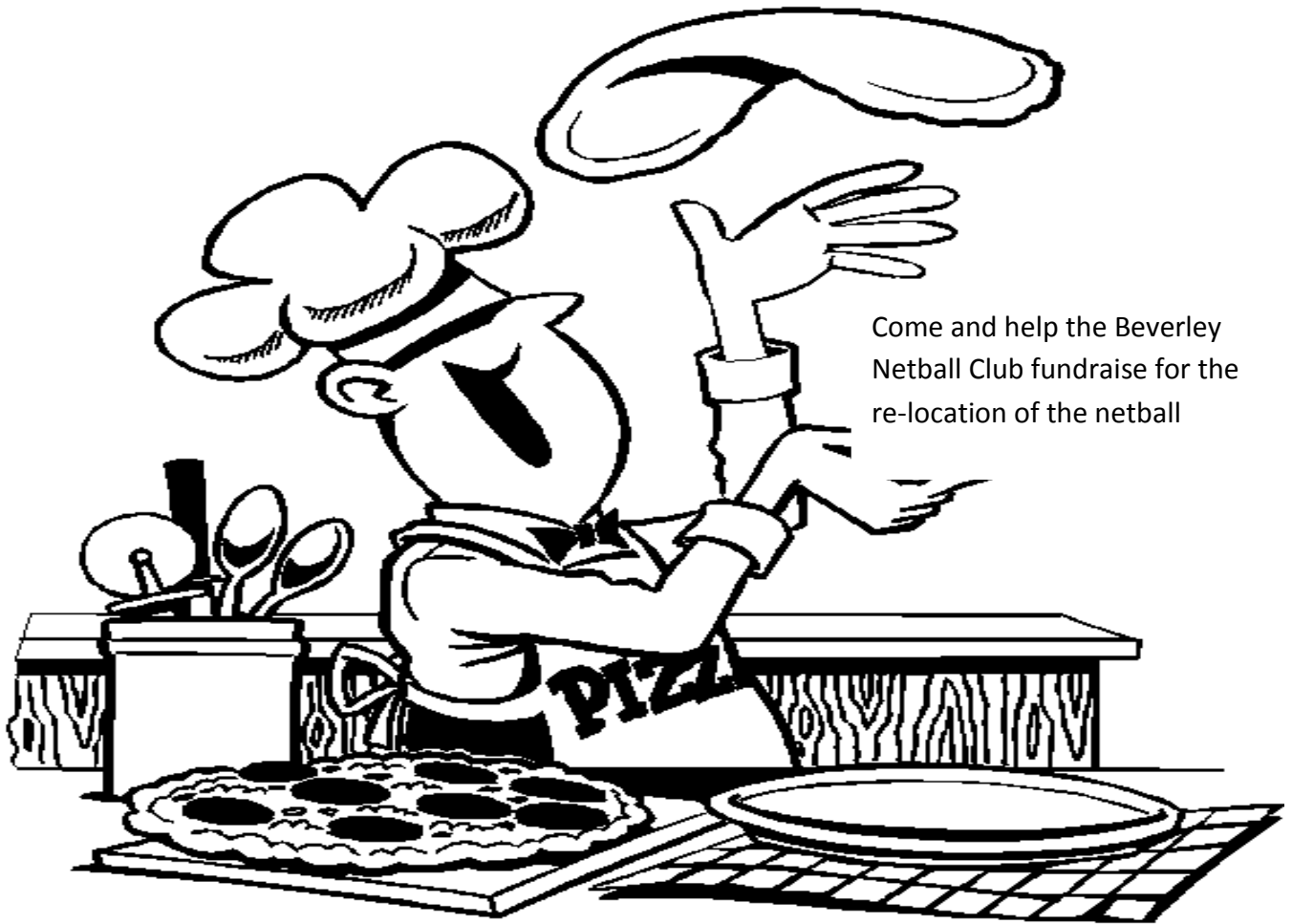
Ron 9646 0318

0429 088 689 or 0488 087 316

MEALS ON WHEELS ROSTER FOR July 2013

- July 01 K & P Smith
 July 02 B Sims / D Ormorod
 July 03 S Erimiha / A Elston
 July 04 T & S Ward
 July 05 G Redding / L Willington
 July 08 B Foster / P Williamson
 July 09 R McCallum / W Gilbert
 July 10 J Van Tiel / J Johnson
 July 11 B Wauchope / G Roache
 July 12 D & E White
 July 15 D Kilpatrick(ND)/ K Badger
 July 16 S & M Morton
 July 17 D Strange / E Boyle
 July 18 J Islip / T Valli
 July 19 B & J Howell
 July 22 B Foster / G Redding
 July 23 B Sims / D Ormorod
 July 24 S Eramiha / J Van Tiel
 July 25 T & S Ward
 July 26 A & K Boyle
 July 29 A Elston / C Tee
 July 30 R McCallum / W Gilbert
 July 31 G Roache / K Badger
 Aug 01 *D & E White*
 Aug 02 *K & P Smith*


Beverley Netball Club Pizza Night Order Form



Come and help the Beverley Netball Club fundraise for the re-location of the netball

Beverley Netball Club is hosting a Pizza Night on the 19th July at the Beverley Lesser Hall 5pm-9pm. Please pre-order to ensure your order is completed. In town delivery is also available for a gold coin donation per pizza. Please state a preferred pickup/delivery time or alternately we can call you once your order is ready.

Pre-orders and payment are due by 12th July and can be handed in at Avon Trading, Beverley Post Office or Beverley CRC.

	Name																	
	Address																	
	Phone Number																	
Pizza	Price		Qty		Total													
Hawaiian	\$18.00ea																	
BBQ Chicken	\$18.00ea																	
Supreme	\$18.00ea																	
Meat-lovers	\$18.00ea																	
Vegetarian	\$18.00ea																	
Garlic Bread	\$3.50ea																	
Delivery	Gold coin donation																	
Total																		
Time	5pm	5:15	5:30	5:45	6	6:15	6:30	6:45	7	7:15	7:30	7:45	8	8:15	8:30	9pm		

MARCELL'S CLEANING

Commercial & Domestic Cleaning
Gutter cleaning, window cleaning,
removal of rubbish and light
gardening available. Police Clearance



Phone:
Maree Thornton
9646 1558
0429 646 155

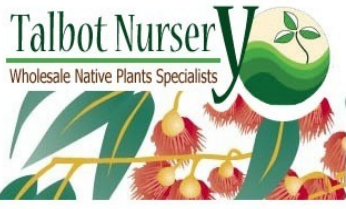
ChemDry®

Drier. Cleaner. Healthier.™
Beta Finish



Superior carpet
& upholstery
cleaning

Freecall 1800 017087
bettafinish@wn.com.au
Fax 08 96225473



Wholesale Native Plants Specialists

Your Beverley Nursery

Native seedlings for revegetation,
bush foods and plantations.

- ✓ Our website is now fully operational - order on line!
- ✓ Tree guards and fertiliser pills
- ✓ Tree planting service available

E-mail: sales@talbotnursery.com.au
or phone/fax Lisa on 9646 1716.

passive energy systems

local specialists in

SOLAR POWER

GRID-CONNECT
OR
OFF-GRID

WIND POWER

all electrical
contracting services

the sky's the limit

call John or Marlene for a quote:

646 77 263 - info@pvenergy.com.au

100% customised to suit your
personal needs & budget!



WOOL BUYING



ROB THORN

0438 364 920

TOP PRICES PAID

FARM PICK-UP

PROMPT PAYMENT

CLIP PURCHASES FORWARD ON SPOT

CLIP HANDLING - SELLING

MEMBER OF PRIVATE TREATY WOOL
MERCHANTS

Warriors Wellbeing

Men's Sexual Health

Now that I have your attention, please read on.

Men's sexual health encapsulates 3 areas; it is about the physical (male reproductive system; our anatomy); mental (psychological wellbeing); and our social/spiritual wellbeing (effective communication, knowing ourselves, our identity)

What are some of the components of men's sexual health?

1. What is sex?
2. What is the Prostate and its problems such as enlargement & cancer?
3. Erectile dysfunction.
4. Infertility.
5. Testosterone deficiency.
6. Testicular cancer.

There is a lot of information on the physical (anatomy) areas of men's sexual health. Andrology Australia, which is the Australian Centre for Excellence in Male Reproductive Health has a lot of awareness and education resources. They can be contacted by: email info@andrologyaustralia.org; phone 1300 303 878; website www.andrologyaustralia.org

Now, because I'm a bloke I want to talk about a couple of bits that aren't discussed very often. The first topic for discussion is Sexual Dysfunctionality in Men.

Because us blokes don't talk about sexual health in a holistic way there is a lot of myth and secrecy about what is normal sexual function. Quite often men boast about their sex life but this is different from sexual health. What is normal sexual health functionality?

There is some recent research which is a great guide to deem what may be normal in regards to sexual functionality. Whether we want to believe it or not this is linked to age. It goes like this:

- In our 50's – 50% of men are sexually dysfunctional.
- In our 60's – 60% of men are sexually dysfunctional.
- In our 70's – 70% of men are sexually dysfunctional.
- In our 80's – 80% of men are sexually dysfunctional.

Don't panic, it is a normal part of ageing, and us blokes need to talk about it a lot more so it's not a great shock to us when it starts to happen. Is there more to life than sex?

So what is sex? It is a biological activity that all living creatures partake in, both to propagate the species and for enjoyment. The latter presents the biggest problem with human sex and that is males and females having very different sexual needs (which can be especially annoying for men). We can't have a positive sexual relationship without connection.

In order to maintain a positive connection, the social/spiritual aspects of your relationship require constant attention. This connection then allows everything else to fall into place.

Some important points to remember in relationship to men's sexual health are:-

- talking to your partner and your doctor is most important;
- dysfunctionality is very common in men over 50 years of age;
- it can be a sign of other more serious diseases such as diabetes or heart problems;
- quite often the problem is a combination of physical (male reproductive system, our anatomy); mental (psychological wellbeing); and social/spiritual wellbeing (communication, knowing ourselves, our identity)
- try and maintain a health and fitness program.

Only by getting men to talk about sexual health will we be able to encourage men to seek treatment, be able to give constructive positive support and ultimately improve that area of men's lives that is vital for overall health and wellbeing.

Blokes – by talking about our sexual health we will encourage other men to open up and talk, to seek treatment, and if necessary book in to see a GP.

Cheers

Owen and The Team at RMHI
delivered by WMH (Inc.)
PO Box 768 Northam WA 6401
Tel: (08) 96 902 277
Fax: (08) 96 902 253
Email: menshealth@agric.wa.gov.au
Web: www.regionalmenshealth.com.au



Beverley Netball Club Inc.

So the season is almost half way through and there isn't too much to report at this stage. The Opening Day had to be postponed due to the weather so watch this space for updates on that. Make sure you get your pizza order in by the 10th July as our annual pizza night is on 19th July. This year we have done away with the wood oven and are sticking with the old faithful gas pizza ovens. If you want to have your pizza at a later date we can supply your pizza fresh so you can freeze them just let us know. Order forms will be available from Avon Trading, Post Office or Beverley CRC and of course in this blarney on page 40.

Results are:

8th June

Pingelly Pink (45) defeated Beverley Spinners (15)

Beverley Hunters has to forfeit against Pingelly Blue due to lack of numbers

14th June

Brookton Glory (52) defeated Beverley Hunters (29)

Beverley Spinners Bye

19th June

Brookton Glory (42) defeated Beverley Spinners (11)

Next games:

Friday 5th July in Brookton

7:00pm Pingelly Green V Brookton Glory

7:00pm Brookton Blazes V Beverley Hunters

8:30pm Pingelly Blue V Beverley Spinners

Saturday 20th July in Pingelly

1:45pm Brookton Glory V Pingelly Blue

1:45pm Brookton Blazes V Beverley Spinners

3:30pm Pingelly Pink V Pingelly Green

Beverley Hunters Bye

Fri 26th July in Beverley

7:00pm Pingelly Pink V Brookton Glory

7:00pm Pingelly Green V Brookton Blazes

8:30pm Beverley Hunters V Beverley Spinners



Above: Beverley Spinners at the first game of the season



Caption this picture, best caption will be printed in August

RA- AN ENTERPRISES

All Dozer and Excavator Work

Including:

Dam Sinking

Dam Cleanout and Enlarging

Excavator with Wood Shears,

Tilt Bucket and

Hydraulic Grab.

Locally Based at West Kokeby

**Phone Ray 0428 936 621 or
08 9646 4136**

TRANSPORT



**DAILY
SERVICE**

*Beverley
to
York
or
Perth
and
Return*

AVON EXPRESS TRANSPORT

0408 914 435

COBB & STACY STANFIELD

Home: (08) 9646 1668

Email: avonexpress@bigpond.com

**FOR URGENT PICK UPS
call COBB on his mobile**

SMALL to MEDIUM SIZED FREIGHT

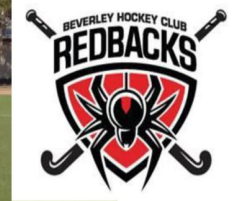
LADIES GOLF RESULTS

Sorry these results were not posted in last month's Blarney but there was a mix up with who was doing them! We started the golf season with green fairways and the men had resanded quite a few greens, so there was a bit of adjustment with these in the beginning, but the greens have settled down now and are great. Thanks to the hard working men of the club.



We have a new member - Val Hagan and a past 9 hole golf player - Tracey Fleay. It's great to have these ladies join us.

DATE	EVENT	RESULTS
Wednesday 17 April	A.Szczecinski Trophy Stableford	Winner - Jane Murray 41pts Runner-up - Marg Peck 32pts Pin - Marg Peck
Wednesday 24 April	Olive Swan Trophy Stableford	Winner - Marg Peck 37pts Runner-up - Jane Murray 35pts
Wednesday 1 May	Glenys Collins Trophy-Stroke, 1st Qualifying Rd, Silver Spoon, International Bowl, Putting Rd, Monthly Medal and Mug	Winner - Maxine Watts 67 nett Runner-up - Anne Szczecinski on c/b from Jane Murray 68nett Pins- Anne Szczecinski and Val Hagan
Wednesday 8 May	Sera Minchin and Yvonne Hobbs Trophy- George Booth 4bbb Stableford	Winners - Marg Peck and Yvonne Hobbs - 27 & 30 pts Pins - Anne Szczecinski and Sera Minchin
Wednesday 15 May	Marg Pecks Trophy Stableford	Winner - Jane Murray 34 pts Runner-up - Sera Minchin 33 pts Pins - Maxine Watts won both.
Wednesday 22 May	Golf Box Challenge Lorna Barrett-Lennard Trophy Stableford	Winner - Yvonne Hobbs 40pts Runner-up - Glenys Collins on a c/b from Marg Peck 34pts Pins - Jane Murray and Anne Szczecinski
Friday 24 May	Tammin Open Day	4 ladies went to Tammin Jane Murray and Glenys Collins won the Gross with 85. Sera Minchin won a raffle.
Wednesday 29 May	Maxine Watts Trophy-Stroke 2 nd Qualifying Rd, International Bowl, Silver Spoon, Putting Rd, Monthly Medal and Mug	Winner - Tracey Fleay 69 nett Runner-up - Anne Szczecinski 70 nett Pins - Glenys Collins and Marg Peck.
Wednesday 5 June	Wundowie Open Day	Marg Peck and Glenys Collins went to Wundowie Glenys won the Gross with 23pts. The rest of us played stableford for club trophy. Winner-Yvonne Hobbs 36 pts Runner-up- Jane Murray 34 pts Pin- Lynn Mactaggart
Wednesday 12 June	Overington Trophy Stableford	Winner - Val Moir 36 pts Runner-up - Yvonne Hobbs 34 pts Pin - Heather Mclean
Friday 14 June	Brookton Open Day	4 ladies went to Brookton Jane Murray won the Gross with 25 pts
Wednesday 19 June	Cunderdin Open Day	6 ladies went over to Cunderdin Maxine Watts won the Gross with 25 pts Sera Minchin won a raffle. Marg Peck had 41 pts and couldn't win anything as there were 3 with 42 pts and 3 with 41pts



BEVERLEY REDBACKS HOCKEY

Hello & welcome to this month's Hockey news.

We have been training hard but it has been a struggle with limited light at the oval. The new lights are now up & running and we are thrilled, it certainly helps when you can see the ball :) Thank you to Jesse Ugle for coming along to training & stepping in as Goalie. Assisting us to get some goal work practice has been much appreciated.

Round 4 Beverley V York Vipers

24 May

It was a chilly night in York playing at 7.45pm. Everyone played extremely well & kept Vipers at no score until 15 minutes into the last half when they snuck a lucky goal in. The end result was 1 - 0 in Yorks favour. Well done all on a great game, you should be proud of our efforts!

Coaches Award - sponsored by Beverley Electrical - Fleta Redding

Captains Award - sponsored by Trevor & Mandy McLean - Megan Vandenberg

Round 5: BYE

01 June

Round 6: Beverley V Aces White

08 June

We were very excited for our first home game of the season AND we were even more excited to be the first to use the new facilities at the sports ground, it was lovely to show it off to the visiting team. Back to the game.... We had a very full team which was great for keeping fresh legs. Fi Bowden was our super star scoring 3 specky goals, I think we can call her goal shark!! Final score 3-0. Thank you to those who came along to cheer us on. A special mention must go to our Shire, we had several comments about our fantastic field, thank you for keeping it in such good condition!

Coaches Award - sponsored by Beverley Electrical - Kathryn McLean

Captains Award - sponsored by Trevor & Mandy McLean - Tori Jamieson

More Hockey News - Turn the page ➡

Round 6: York Jets v Beverley**14 June**

OMG! What a win! Friday night's temperature was icy but the ladies were on FIRE, winning over a very skilled side York Jets in a thrilling 1 - 0 game. The intensity of the game was up there with that of any season final and the girls never stopped for a minute as they kept up the determination and fire in the belly. Well done to each and every player as it truly was a team effort. Emily Miller scored our awesome goal assisted closely by Mary Brogan. York Jets provided us with some yummy soup after the game, thank you.

Coaches Award - sponsored by Beverley Electrical – Ali Lewis

Captains Award - sponsored by Trevor & Mandy McLean – Mary Brogan

Round 7: Country Week Hockey**22 June**

This weekend sees some of our Ladies head to Country Week. Good luck to Mary Brogan, Margaret Mourach, Lisa Mourach, Fleta Redding and all the Avon Ladies competing. Stay tuned for Country Week antics :)

Beverley Oscars Revue Night**Sat 27 July**

This night will be a night to remember – everyone is invited!

Featuring acts from your favorite footy, netball and hockey players.

6.30pm - \$30 pp - entry includes finger food on arrival, meal during intermission and entertainment all night.

Dress is Oscars Formal. There will be tables of 8 available to be booked and also general seating. Bar facilities available.

Tickets available from Chantelle Meade 0429 418 576 or Ali Lewis 0417 947 955

Sponsors Day 2013**17th August**

Watch this space for details in the August notes.

Training Wednesday's: 5.30pm. See you there!

Best wishes to Penny Burns for a speedy recovery. Penny had a fight with the kitchen knife & sliced some of her finger off, ouch! Congratulations to Carissa & Brett Shaw who are extending their little family, we can't wait to meet Noah's brother or sister.

Fundraising

We are selling the ever so popular Cadbury Freddo & blocks of chocolates to raise funds for future major purchases, maybe our own field one day! Please see one of our players if you have a sweet tooth. Thank you in advance for your support.

2013 Fixtures

Sat 22nd June Ladies Country Week Hockey
Sat 29th June Beverley v Jenna 3.00 in Beverley
Sat 6th July Team Bye
Sat 13th July School Holiday Bye
Fri 19th July York Jets v Beverley 6.15 in York (double header weekend)
Sat 20th July Beverley v Jenna 1.30 in Beverley (double header weekend)
Fri 26th July Beverley v York Vipers 6.30 in York

Sat 3rd Aug Aces White v Beverley 1.30 in Northam
Fri 9th Aug York Vipers v Beverley 7.45 in York
Sat 17th Aug Beverley v York Jets 1.30 in Beverley (Sponsors Day)
Sat 24th Aug Team Bye
Sat 31st Aug 1st & 2nd Semi Finals

Sat 2nd Sept Preliminary Final
Sat 14th Sept Grand Final

Contact: Want to keep updated on the Beverley Redbacks Hockey Club?

Register your email on our communications list by emailing beverleyredbacks@live.com.au



Beverley Men's Golf Notes



Fine weather greeted 15 golfers on Saturday 25th May for the **Brett Hutchinson** Trophy.

This week saw a number of very good scores but none better than Mark Bickley who won the day with 40 points. Chris Pepper and Mark Armstrong both scored 38 points with Darrell Hagan and Terry Winfield scoring 37 points each.

Novelties on the day were won by;

Best 2nd Shot on 2 Terry Winfield

Nearest to the Pin on 5 Fred Sing

Longest Chip or Putt on 10 Mark Bickley

Nearest to the Pin on 13 Terry Winfield

Thanks are extended to **Brett Hutchinson** for sponsoring the day.

Saturday 1st June saw the 2nd Qualifying Round held along with the Monthly Mug. The day was sponsored by **Wayne Smith** and our thanks are extended to him.

In cool conditions a field of 15 took part in the day. It was great to see Mark Edwards and Greg Barrett-Lennard play their first game of the year. In a very close event Mark Bickley won the day by one shot with a very good 69 nett from Terry Winfield with 70 nett.

The best Gross score was Terry Winfield who shot a tremendous 77 only 5 over the card for the day. We believe this is Terry's best score in his career.

A number of additional novelties were also on offer through the generous support of **Wayne Smith**.

Novelties on the day were won by;

Best 2nd Shot on 1 Mark Edwards

Longest Drive on 3 Mark Bickley

Nearest to the Pin on 5 Stephen Gollan

Best 2nd Shot on 6 Brett Islip

Longest Putt on 7 Mark Bickley

Best 3rd Shot on 9 Daniel Gollan

Best 2nd Shot on 10 Stephen Gollan

Best 3rd Shot on 11 Greg Barrett-Lennard

Nearest to the Pin on 13 John Donovan

Best 2nd Shot on 15 Greg Barrett-Lennard

Longest Putt on 17 Mark Armstrong

Appreciation is extended to **Wayne Smith** for sponsoring the day.

Saturday 8th June witnessed 9 players take part in the **Always Green** Trophy. This was a Stableford event.

At the completion of the day saw Mel Vivian named winner with 38 points and a two way tie for 2nd with Mark Bickley, Fred Bremner with 37 points.

Gavin also sponsored the novelties and the winners were

Best second shot on 1 Terry Winfield

Longest Drive on 3 Mark Bickley

Longest Chip or Putt on 4 Mark Armstrong

Nearest to the Pin on 5 Terry Winfield

Best Second Shot on 7 Mark Armstrong

Nearest to the Pin on 8 Terry Winfield

Best Third Shot on 9 Terry Winfield

Best Second Shot on 10 Mel Vivian

Best Third Shot on 11 Mark Bickley

Nearest to the Pin 13 Mark Bickley

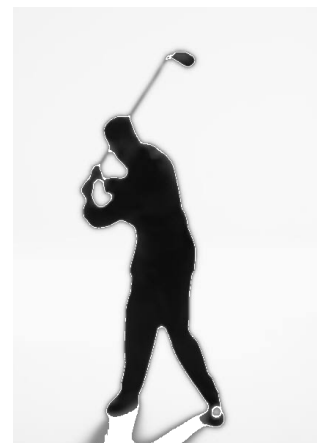
Longest Chip or Putt on 15 Mark Armstrong

Best Second Shot on 16 Mark Armstrong

Longest Drive on 17 Gavin Sazanov

Nearest to the Pin on 18 Fred Bremner

The club would like to thanks **Gavin Sazanov** for sponsoring this day.



On Sunday 9th June the first Darling Range Golf Association event was held in Waroona. This was a 27 hole Stableford event with Beverley sending 9 players.

The Darling Range Golf Association (DRGA) consists of the following clubs Beverley, Mundaring, Pickering Brook, Serpentine and Waroona. When each club has their Open Day you must pick 5 players at the start of the day from your club, and their individual scores are combined so at the end of the day each clubs total score is compared against the other clubs. At the end of the season the club with the highest number of points wins the "Top Club" award.

Beverley's team comprised of Wayde McLean (46 points), Bruce Kilpatrick (41 points), Stephen Gollan (39 points), Mark Bickley (36 points) and Jason (Sparrow) Young (23 points). The team came in 5th place.

John Donovan 41 points, Ben Murray 25 points and Ron Bickley 32 points were the unlucky ones to be left out of the team. Ben Murray won a novelty for Nearest to the Pin on 4.

Fine Sunny conditions greeted 7 golfers on Saturday 15th June to play for the prestigious **GL Broun Trophy** which has been sponsored by the **Broun Family** for some 57 years.

The trophy is played in a Stableford format over 18 holes. The eventual winner of the day was Mel Vivian with a very good score of 39 points, with Runner Up going to David Kennedy with 35 points.

Novelties on the day were won by;

Longest Chip or Putt on 2 David Kennedy
 Nearest to the Pin on 5 Terry Winfield
 Nearest to the Pin on 8 Terry Winfield
 Nearest to the Pin on 13 David Kennedy
 Longest Putt on 16 Gavin Sazanov
 Nearest to the Pin on 18 Fred Sing

Once again our thanks are extended to the **Broun Family** for supporting this event.

Ideal conditions greeted 15 golfers on Saturday 22 June when the 3rd Qualifying round was held.

This day was sponsored by Life Member **Fred Sing**.

At the end of the day Mark Edwards and Darrell Hagan tied with 68 nett but after a countback Mark was declared the winner.

Mark Armstrong and Mark Bickley also played well to record 70 nett.

Mark Edwards had the best Gross score with an impressive 77.

Ben Moulton recorded two birdies on the day which saw him win the birdie nest for the second time this season.

Fred also provided 18 Novelties on the day and these were won by;

Best 2nd Shot on 1 Mark Armstrong
 Longest Chip or Putt on 2 Mark Bickley
 Longest Drive on 3 Darrell Hagan
 Longest Putt on 4 Mark Bickley
 Nearest to the Pin on 5 Mark Edwards
 Best 2nd Shot on 6 Darrell Hagan
 Longest Chip or Putt on 7 Bruce Kilpatrick
 Nearest to the Pin on 8 Darrell Hagan
 Best 3rd Shot on 9 Mark Edwards
 Best 2nd Shot on 10 Mark Armstrong
 Best 3rd Shot on 11 Ben Moulton
 Best 2nd Shot on 12 Bruce Kilpatrick
 Nearest top the Pin on 13 John Donovan
 Best 3rd Shot on 14 Ben Moulton
 Longest Chip or Putt on 15 Gavin Sazanov
 Longest Chip or Putt on 16 Graeme Hagan
 Best 2nd Shot on 17 Ben Moulton
 Longest Putt on 18 Mark Armstrong

Thanks are extended to **China** for sponsoring the day.



Golf fixtures for the month of July are as follows:

Friday 5	Primaries Day	Ambrose in 3's	Men's & Ladies Arrange Own Partner
Saturday 6	Streamline Brick Paving Trophy	Stroke	4 th Qualifying Round. Monthly Mug
Saturday 13	AL Oliver Trophy	Stableford	
Sunday 14	DRGA Championships – Beverley	Stroke	
Saturday 20	Club Championships – Quarter Finals	Match Play	
Sunday 21	Club Championships – Semi Finals	Match Play	
Saturday 27	Wayde & Kathryn McLean 4 Ball Better Ball	Stableford	Arrange Own Partner. (Tee Off from 12 Noon)
Sunday 28	DRGA Event - Springdell Cup		(Please Bring a Plate of Savouries)



Football Training
6:30pm, Wednesday's at Altone Park in
Beechboro and Beverley Oval; and 6:30pm,
Friday's at Beverley Oval.

Save the date: Saturday 27th July
Beverley Redbacks
Present The B'Oscars – 2013 Players' Revue
at the Beverley Town Hall

The last month has been packed full of footy and our League team has stood up well to the challenge, winning all our games through this period and remaining in top spot on the ladder. Our Reserves are knocking on the door of the top four and reaping the rewards of some added depth to our player group, and our Netball and Hockey teams are both at the higher ends of their respective tables.

It's a bit of interrupted start to July, with a Club bye, followed by a week off for the Country Championships, before a top of the table clash with Railways, where just four points separated us in our last encounter.

On Saturday the 27th of July, you're all in for a real treat, when we present The B'Oscars, a players' revue featuring members of our footy, netball and hockey teams on the stage and screen. This is a night not to be missed, so get your tickets and get to the Town Hall for a massive night of entertainment!!

The Beverley Football Club wishes to acknowledge and commend the Beverley Shire Council and Management on the extensive research, planning and consultation that went into the construction of the new Recreation Facilities and the renovated Amenities Building. They can, as we are, be extremely proud of the final product they have provided which we can all utilise and enjoy. We will cherish the history, memories and achievements that we made in our old Clubrooms, which served us so well for so many years, and we will now strive to write a whole new book of achievements in our new home today, and for the future generations to come!!

Before the opening bounce of the Reserves game on Sunday 9th June a magnificent image was captured, with a father-son generation photo taken of a collection of our past, present and future champions of our Club.

On Friday the 28th of June we hosted our ever popular "Annual Fish Night", thanks to the continued generosity of Bob Kempton and his crew of helpers. As always it was an enjoyable and successful night for the Beverley Football Club!!

Avon Hockey Association Round 4 (24th May 2013)
Beverley vs. York Vipers at Beverley

York Vipers 1
Beverley 0
Margin: 1 goal
Best:
Beverley - Megan Vandenberg and Fleta Redding.

AFA Round 7 (25th May 2013)
York vs. Beverley at York

<u>LEAGUE</u>	1 st	2 nd	3 rd	4 th	Points
Beverley	3.4	6.6	11.7	15.12	102
York	1.4	4.6	5.7	9.12	66
<u>Margin:</u>	36 points				

Goals:
Beverley- James Murray 6; Josh Keen 4; Taine Wilson 1;
Will Schorer 1; Dale Wansbrough 1; Ben Ireland 1;
Ben Parkes 1.
Best:
Beverley- Josh Keen, Rob Wansbrough, Dale Wansbrough,
Justin Mann, Dean McDonald, Matt McLean and
James Murray.

<u>RESERVES</u>	1 st	2 nd	3 rd	4 th	Points
Beverley	3.0	5.0	5.1	8.2	50
York	1.5	2.7	3.10	5.13	43



Top Row (L-R): Bruce Mann, Lew Shaw, Peter Wansbrough, Keith Murray, Mally Edwards, Trevor McLean and Dale Edwards.
Middle Row (L-R): Brendan Minchin, Steven Minchin, Jarrad Minchin, Cliff Murray, Brett Shaw, Bill Wansbrough, Fraser Kilpatrick, Mark Young, Peter Edwards, Matthew McLean and Marc Edwards.
Seating (L-R): Scott Minchin, Stuart Murray, Justin Mann, Blake Wansbrough, Dale Wansbrough, Robbie Wansbrough, Tim Kilpatrick, Damien Murray, Sam Young, Shaun Edwards, Josh Edwards and Jordan Edwards.

Margin: 7 points

Goals:

Beverley- Gavin Farmer 5; Simon Davison 1; Aubrey Ahern 1.

Best:

Beverley- Daniel Bailey, Damien Murray, Gavin Farmer, Dominic Tee, Aubrey Ahern and Jordan Edwards.

NETBALL

York 68

Beverley 39

Margin: 29 goals

Best:

Beverley - Narelle Bailey and Emily Miller.

Avon Hockey Association General Bye (1st – 3rd June 2013)

Men's Country Hockey Championships

AFA Round 8 (2nd June 2013)

Quairading vs. Beverley at Quairading

LEAGUE	1 st	2 nd	3 rd	4 th	Points
Beverley	5.3	8.10	12.13	18.17	125
Quairading	3.2	3.2	3.5	5.8	38

Margin: 87 points

Goals:

Beverley- James Murray 7; Taine Wilson 3; Ben Ireland 1; Scott Tomlinson 1; Owen Heasman 1; Mark Spiliotacopoulos 1; James Turner 1; Josh Keen 1; Will Schorer 1; Gavin Farmer 1.

Best:

Beverley- Scott Minchin, Josh Keen, Ben Ireland, Stuart Murray, Matt McLean, Ben Ahern, Blake Wansbrough, Taine Wilson, Will Schorer, Ben Parkes and Brendan Counsel.

RESERVES	1 st	2 nd	3 rd	4 th	Points
Quairading	3.1	9.5	12.9	18.14	122
Beverley	3.1	4.1	5.4	5.4	34

Margin: 88 points

Goals:

Beverley- Josh Armstrong 1; Brett Shaw 1; Josh Edwards 1; Tim Kilpatrick 1; Brendan Tomlinson 1.

Best:

Beverley- Daniel Bailey, Aubrey Ahern, Jordan Edwards and Jake Fleay.

NETBALL

Quairading 62

Beverley 23

Margin: 39 goals

Best:

Beverley - Kira Strange and Sarah Owens.

Avon Hockey Association Round 5 (8th June 2013)

Beverley vs. Aces White at Beverley

Beverley 3

Aces White 0

Margin: 3 goals

Goals: Beverley - Fiona Bowden 3.

Best: Beverley- Kathryn McLean and Tori Jamieson.

AFA Round 9 (9th June 2013)

Beverley vs. Cunderdin at Beverley

LEAGUE	1 st	2 nd	3 rd	4 th	Points
Beverley	7.2	14.9	19.14	22.17	149
Cunderdin	4.4	5.7	10.9	15.11	101

Margin: 48 points

Goals:

Beverley - James Murray 7; James Turner 5; Taine Wilson 4; Josh Keen 3; Will Schorer 1; Dale Wansbrough 1; James Adams 1.

Best:

Beverley - Justin Mann, Dean McDonald, Matt Davey, James Turner, Scott Tomlinson, Scott Minchin, Josh Keen, Taine Wilson and Charlie Horrocks.

RESERVES	1 st	2 nd	3 rd	4 th	Points
Cunderdin	7.2	10.6	13.7	16.8	104
Beverley	1.1	5.1	7.1	9.3	57

Margin: 47 points

Goals:

Beverley - Gavin Farmer 4; Josh Armstrong 2; Simon Dawson 1; Darryl Pickett 1; Simon Marshall 1.

Best:

Beverley- Tim Kilpatrick, Brett Jeffery, Jordan Edwards, Josh Armstrong, Simon Dawson, Jai Jeffery and Gavin Farmer.

NETBALL

Beverley 60

Cunderdin 23

Margin: 37 goals

Best:

Beverley- Narelle Bailey and Chantelle Meade.

Avon Hockey Association Round 6 (14th June 2013)

Beverley vs. York Jets at York

Beverley 1

York Jets 0

Margin: 1 goal

Goals: Beverley - Emily Miller.

Best: Beverley - Mary Brogan and Ali Lewis.

AFA Round 10 (15th June 2013)

Beverley vs. Kellerberrin/Tammin at Beverley

LEAGUE	1 st	2 nd	3 rd	4 th	Points	
Beverley		3.1	6.4	7.7	12.11	83
Kellerberrin/Tammin	2.2	5.3	7.6	8.7	55	

Margin: 28 points

Goals:

Beverley- James Murray 6; Dale Wansbrough 4; James Turner 1; Taine Wilson 1.

Best:

Beverley - Dale Wansbrough, Matthew McLean, Josh Keen, Justin Mann, Robbie Wansbrough, Scott Tomlinson, James Adams, Matt Davey and Ben Ahern.

RESERVES	1 st	2 nd	3 rd	4 th	Points	
Beverley		3.5	7.7	14.11	21.15	126
Kellerberrin/Tammin	1.0	2.2	2.3	2.4	16	

Margin: 110 points

Goals:

Beverley - Gavin Farmer 9; Josh Edwards 4; Darrel Pickett Jr. 3; Karl Gillespie 2; Brett Shaw 1; Damien Murray 1; Josh Armstrong 1.

Best:

Beverley- Gavin Farmer, Jordan Edwards, Karl Gillespie, Josh Edwards, Jai Jeffery, Simon Marshall, Aubrey Ahern and Travis Ugle.

Congratulations to:

- First League game players for Beverley: Ben Ahern.
- First Reserves game players for Beverley: Shaun Edwards, Liam Screaigh, Darryl Pickett and Sam Young.
- Ben Murray, who has been elected to the Board of Directors of the Avon Football Association;
- Clint Gardiner, who celebrated his 30th birthday on Saturday 8th June;
- Shae Sax and Nikki Kruger, who recently announced their engagement;
- Gavin Farmer & Tia Mooney, on the birth of their twin boys Gavin and Rhyce on Thursday 13th June;
- Ian & Jen Richardson, on the birth of their baby girl Eva on Monday 17th June;
- Mark Bickley, who celebrated his 30th birthday on Wednesday 19th June;
- Peter Bickley, who celebrated his 30th birthday on Wednesday 19th June;
- Mary Brogan, Lisa Mourach, Marg Mourach and Fleta Redding, who all represented Beverley playing for Avon in the Women's Hockey Country Championships at the Perth Hockey Stadium from Friday 21st to Sunday 23rd June;
- James Adams and Taine Wilson, who both represented Beverley playing for Avon in the Northern Region Colts Carnival at Wongan Hills from Saturday 22nd to Sunday 23rd June;
- Andrew Coxon, who celebrates his 25th birthday on Saturday 6th July;
- Robbie Wansbrough, who celebrates his 25th birthday on Sunday 7th July;
- Adam Kilpatrick, who celebrates his 30th birthday on Sunday 14th July;
- Daniel Kilpatrick, who celebrates his 30th birthday on Sunday 14th July;
- Cameron Ugle, who celebrates his 30th birthday on Tuesday 16th July;
- Steven Burstall, who celebrates his 25th birthday on Monday 22nd July;
- Jenny Broun, who celebrates her 60th birthday on Monday 22nd July;
- Ian Herbert, who celebrates his 30th birthday on Saturday 27th July; and
- Helen Edwards, who celebrates her 50th birthday on Saturday 27th July.

Coming up:

6:00pm, Friday 28th June

Beverley Football Club: "compulsory training session" at Beverley Oval, followed by "Annual Fish Night" at the Beverley Football Club;

3:00pm, Saturday 29th June

Avon Hockey Association Round 7: Beverley vs. Jennacubbine at Beverley;

Sunday 30th June

AFA Round 11: Beverley vs. Federals at Beverley;

Saturday 6th July

Avon Hockey Association Round 8: Beverley (bye);

Saturday 6th July

AFA Round 12: Beverley (bye);

Thursday 11th – Saturday 13th July

AFA General bye: Country Football Championships in Perth;

Friday 12th – Sunday 14th July

Avon Hockey Association General bye: (School Holidays);

6:15pm, Friday 19th July

Avon Hockey Association Round 9

Game 1: York Jets vs. Beverley at York;

1:30pm, Saturday 20th July

Avon Hockey Association Round 9

Game 2: Beverley vs. Jennacubbine at Beverley;

Sunday 21st July

AFA Round 13: Beverley vs. Railways at Beverley;

6:30pm, Friday 19th July

Avon Hockey Association Round 10:

Beverley vs. York Vipers at York;

Saturday 27th July

AFA Round 14: Beverley vs. York at Beverley;

6:30pm, Saturday 27th July

Beverley Redbacks: The B'Oscars – 2013 Players' Revue

at the Beverley Town Hall;

1:30pm, Saturday 3rd August

Avon Hockey Association Round 11:

Aces White vs. Beverley at Northam;

Sunday 4th August

AFA Round 15: Beverley vs. Quairading at Beverley;

7:45pm, Friday 9th August

Avon Hockey Association Round 12:

York Vipers vs. Beverley at York; and

Saturday 10th August

AFA Round 16: Beverley vs. Cunderdin at Beverley (1973 – 40 Year Reunion & 2003 – 10 Year Reunion).

The Beverley Football Club urges all supporters to join as a Member in season 2013! Members are integral to the survival of our Club and your support is greatly valued. The membership fees for season 2013 are:

Football Senior Player (age 22 and over) - \$100.00

Football Senior Player (age 18 – 21) - \$50.00

Football Junior Player (age 17 and under) - \$30.00

Netball Player (age 18 and over) - \$30.00

Social Member - \$30.00

Pay online now

BSB: 016540 (ANZ Beverley)

A/c Number: 431901492

A/c Name: BEVERLEY FOOTBALL CLUB

The Beverley Football Club Social Committee requires the services of an enthusiastic team to manage and facilitate the operation of our kiosk for our seven home games in season 2013. The Social Committee acts as one of our Club's strongest resources and it is our wish with your valued assistance that this continues to be successful.

Please contact Chantelle Meade on 0429 418 576.

The Beverley Football Club invites applications for the position of Reserves Umpire for the 2013 season.

Umpires Accreditation Course will be provided;

Remuneration package provided; and Required for just seven home games. Please contact President Steven Minchin on 9641 6060.

A reminder to all players, members, sponsors and supporters that you can now view all the latest news and events from the Beverley Redbacks by checking out our Facebook page at: <http://www.facebook.com/beverley.footballclub?ref=ts>

To keep you informed and up to date on the all the latest news and events from the Beverley Football Club, simply register your email address with us at beverleyfc@bigpond.com and we'll add you to our mailing list.

See you at the footy!!!



BEVERLEY FARM SERVICES

57 Forrest Street BEVERLEY WA 6304

Ph: 9646 1420 Fax 9646 0547 Geoff MOB 0429 4611420

Email: bevfarmservices@wn.com.au

We are pleased to advise that we now stock **Steel Blue Boots** as well as our **Rossi** range, work & safety boots, elastic side or lace-up. Call in and check them out.

Hi-Vis work wear shirts, jumpers, flying jackets, trousers, vests.

Usual winter work wear available, Drill Trousers, Drill Shirts, Wool Jeans, Fleecy Shirts, Stockpile & Explorer Socks, Wool Jumpers, Windcheaters & Polo Fleece Jumpers. If we haven't got what you want we will get it just for you.

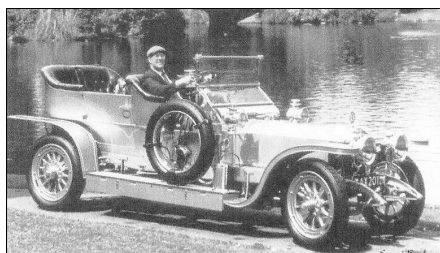


DRINK WISELY HOME SAFELY

COURTESY CAR AND
DRIVER

AVAILABLE FROM
5.00pm UNTIL 10.00pm
(Except Tuesdays & Thursdays)

This service is donations only.



Please book through the

Freemasons Tavern on
9646 1094.

Donations to be placed in the
box at the hotel.

Donations will be donated to
charities.

(e.g. Ambulance, Hospital etc)

Female passengers using this service
are to be accompanied by another
adult for safety implications.

C & B SOUTHERN RUN TRANSPORT

DELIVERING TO: BEVERLEY, BROOKTON, PINGELLY
MONDAY, WEDNESDAY AND FRIDAY.

DELIVERY OF GENERAL FREIGHT, AND CHILLER GOODS
FROM CANNINGVALE MARKETS DEPO.

PLEASE CONTACT PAUL BALDWIN ON
0417 953 968 OR AH 08 9646 0461.

Big enough to do the job, small enough to care.

BEVERLEY TRANSPORT SERVICE

Your local carrier for over 30 years.

**GRAIN, FERTILISER, LIME, HAY, WOOL AND
GENERAL TRANSPORT**

**Agents for
Optima Agriculture
Supply and cart of Lime products**

**Garry & Sarah Miller
Ph: 9646 4066 or 0428 464 066
miller@reachnet.com.au**



Beverley Horse & Pony Club

Vicky, Tealah & Bronte represented the club at Toodyay Pony Club's Gymkhana on the 26th May. Vicky's first event with *Darcy* went very well with the final results including a couple of first placing's. Tealah had lots of fun on the day with *Paddy* tackling the jumping, hacking and novelties and came home with a handful of ribbons. Bronte had a very successful day winning Champion Pony in the Walk Trot ring and winning a few of the novelties. All three girls had a heap of fun and are looking forward to next year's event along with Katie and Kip who spent this year as helpers.



Our June rally turned out to be a beautiful day. Riders spent the morning working hard under the tutelage of Felicity, Marika and Tess on their flatwork and jumping. The afternoon saw Felicity and Marika take riders out over some of the X-Country Jumps, working on their technique on approach and over

the jump. All the riders bravely tackled the ditch by the end of the session.



We got to meet Katie's new horse, *Piper*, who is a lovely quiet horse and all going well should last Katie a long time. Eloise borrowed Ester again and had a great day.

We wish Tealah and Bronte good luck as they head to Northam on the 23rd June for the Avon Zone Novelties Runoffs. The girls will spend the afternoon jumping hay bales, bending, racing around barrels and all the other fun activities that make up the novelties events, I just hope no

one drops the egg in the Egg & Spoon Race. The top six riders for each novelty will be selected as part of the Zone team to compete at the championships which will be run at Muresk this year.

We have a group of 8 riders who are attending the Avon Zone Camp on the 6th & 7th July. A full weekend of various horse related activities is planned for riders. This is a great weekend for our members to spend time with riders from other clubs in a non-competitive atmosphere.

Our next rally will be on the 21st July. Please contact our Club Coach Coordinator Renée on renee.philip@bigpond.com to advise if you will be attending or not so that she can arrange coaches for the day.

Upcoming Events

Beverley Horse & Pony Club Inc

All Breeds Show

21st September 2013

In-Hand & Ridden Classes

Rosettes and prizes to winners.

Beverley Horse & Pony Club Inc

Cake Stall

14th September 2013

Lots of Cakes, goodies and raffles

Coming Events In Beverley

Friday	05 July	Parenting WA Workshop
Saturday	06 July	Khanacross
Sunday	07 July	Junior Motorkhana/Drive Day/Busy Bee
Friday	19 July	Pizza Night
Sunday	21 July	BHPC Rally
Saturday	27 July	Beverley Oscars
Saturday	03 Aug	Twilight Khanacross
Sunday	04 Aug	Autocross
Sunday	04 July	Lyme Disease Awareness & Action Day
Saturday	24 Aug	BEVERLEY AGRICULTURAL SHOW DAY
Saturday	07 Sep	WA Wyandotte Fanciers Show
Saturday	14 Sep	BHPC Cake Stall
Sunday	15 Sep	Autocross/Junior Motorkhana
Saturday	21 Sep	BHPC All Breeds Show
Thurs - Sun	26 - 29 Sep	CMCA West Coast Rally
Sunday	29 Sep	Country Choir Bash
Sunday	20 October	Stomp for the Stables 'Walkathon'
Saturday	26 Oct	Twilight Khanacross
Sunday	27 Oct	Autocross
Saturday	02 Nov	Scottish Night
Saturday	04 Nov	Wild Women of the West Seminar 2013
Saturday	21 Dec	Variety Christmas Concert

The flag was flown at half-mast on the Beverley Town Hall as a mark of respect to:-

DISCLAIMER

The information in this publication is of a general nature as a service to the ratepayer. The articles included herein are not intended to provide a complete discussion of each subject. While the information is believed to be correct, no responsibility is accepted for its accuracy. No liability is accepted for any statements of opinion or any error or omission.

BEVERLEY BLARNEY

1100 copies each month

ADVERTISING RATES

Size A: (~122 x 180mm)	\$80.00 GST inc
Size B: (~122 x 89mm)	\$40.00 GST inc
Size C: (~60 x 89mm)	\$24.00 GST inc
Size D: (5 lines)	\$ 8.00 GST inc
Size E: (3 lines)	\$ 5.00 GST inc
Size F: (122 x 135mm)	\$60.00 GST inc

Club notes etc. are free of charge

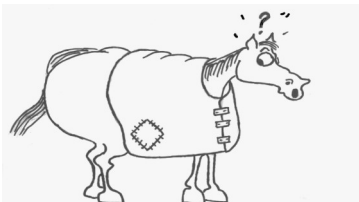
The deadline for the next Beverley Blarney is 4pm Friday 23 July 2013

Shire of Beverley
PO Box 20, Beverley, 6304

Tel: 9646 1200 or Fax: 9646 1409
Email: blarney@beverley.wa.gov.au

Got an event coming up?
Advertise it here

Horse Rug Repairs



"Does my bum look big in this?"

**Contact Andrew
Oakdale Handcrafted
Products
Ph: 9646 1403**

BEVERLEY BLARNEY DEADLINE DATES FOR 2013

**** Cut out these deadline reminders ****

ISSUE	DAY	DATE
AUG 2013 issue	TUESDAY	23 July 2013
SEP 2013 issue	FRIDAY	23 August 2013
OCT 2013 issue	MONDAY	23 September 2013
NOV 2013 issue	WEDNESDAY	23 October 2013
DEC 2013 issue	FRIDAY	22 November 2013
JAN 2014 issue	THURSDAY	19 December 2013



What's On in July

Get your show entries ready



Mon	Tue	Wed	Thu	Fri	Sat	Sun
1 Weight Watchers Bridge @ CWA Walking Group	2 HACC Men's Shed and AGM Stay Active Quilting	3 HACC RAOB Ambulance Dance Walking Group Ag Society Meeting	4 Line Dancing Playgroup Lions Dinner Meeting	5 Op Shop Youth Centre Karate Primaries Day Walking Group Beyond Gardens	6 Samba @ CWA Men's Golf	7
8 Weight Watchers Bridge @ CWA Walking Group CRC Meeting Historical Society Meeting	9 HACC Men's Shed Stay Active Quilting	10 HACC Dance Singing Workshop Walking Group	11 Line Dancing Playgroup Friendly Club	12 Op Shop Youth Centre Walking Group Beyond Gardens	13 Samba @ CWA Men's Golf	14 DRGA Championship Golf - Beverley
15 Weight Watchers Bridge @ CWA Walking Group	16 HACC Men's Shed Stay Active Quilting	17 HACC Masonic Lodge 7.30pm Ambulance Dance Walking Group	18 Line Dancing Playgroup Lions Business Meeting	19 Op Shop Youth Centre Pizza Night Walking Group Beyond Gardens	20 Samba @ CWA Hockey - Beverley Golf Club Championships	21 Golf Club Championships Football in Beverley BHPC Rally
22 Weight Watchers Bridge @ CWA Walking Group	23 HACC Men's Shed Stay Active Quilting Ambulance AGM BLARNEY DEADLINE COUNCIL MEETING	24 HACC Dance Walking Group	25 Line Dancing Playgroup	26 Op Shop Youth Centre Karate Netball - Beverley Walking Group Beyond Gardens	27 Samba @ CWA Men's Golf Football in Beverley Beverley Oscars	28 DRGA Event at golf
29 Weight Watchers Bridge @ CWA Walking Group	30 HACC Men's Shed Stay Active Quilting	31 HACC Dance Walking Group				