



BEVERLEY BLARNEY

Beverley



48 HOUR STAY

Edition 432

October 2020

No Charge



The mateship of the Beverley Heroic

Back in 1897 Percy Armstrong and his mates the League of WA Wheelmen started the Beverley To Perth Race, known as the Rover Race. Menzies Bike shop Manager, John Beck, gained first and fastest from a very liberal handicap of 45 minutes over the 116 Miles.

Since then the spirit of cooperation, healthy competition, loyalty and friendship has dominated the event. Today as we celebrate the history of that very race (now called the Beverley Heroic) with a whole weekend dedicated to bike enthusiast's. There are plenty of races for all levels of bike riding abilities, including a free kids race, Cyclocross on Saturday, with Sunday being reserved for the big race. Grab some mates and come and check out displays of historical bikes and enjoy the beautiful country side.



Above: Percy Armstrong the man behind the Beverley to Perth Race 1897



RESTRICTED BURNING WILL COMMENCE ON SATURDAY 03 OCTOBER UNTIL SATURDAY 14 NOVEMBER. A PERMIT TO BURN APPLICATION IS REQUIRED TO BE MADE VIA THE SHIRE OF BEVERLEY WEBSITE.



SHIRE OF BEVERLEY PRESIDENT'S REPORT



Vincent Street Streetscape Project Public Consultation

Thank you to everyone who attended the public consultation for the Vincent Street Streetscape Project. All comments and suggestions were addressed by the Landscape Architects for Council to consider. Council formally agreed to move forward with the project at the 22 September 2020 Ordinary Council meeting.

To keep up to date with the project and plans, please visit the Streetscape Project page on our website:

<https://www.beverley.wa.gov.au/council/news-information/vincent-street-streetscape-project.aspx>

Moort Wabiny Park

Moort Wabiny Park is set for completion at the end of September. The park looks fantastic and is due for a soft opening during October. The official opening is yet to be scheduled as there is a delay in connecting power to site due to a dispute between Western Power and Arc Infrastructure; hopefully this will be resolved sooner rather than later. The Shire would like to thank Elders Beverley for their recent assistance in using their property to access the park when constructing fencing and lighting towers. Please keep an eye on Facebook and website for further opening details.

Onsite Accommodation

Council have formally progressed the Onsite Accommodation at the Caravan Park with work to be overseen and carried out by J Rozema Builders. The project is due to commence in October and be completed by June 2021. The project will see the construction of six units with ensuite facilities (one unit with universal access) on Council Road. The accommodation is to compliment existing businesses and provide economic benefit with increased visitation to our town.

Town Hall Floor Refurbishment

The Town Hall will be closed from November 2020 until February 2021 while it receives new timber flooring and an upgrade to the AV System. Thank you to the affected clubs and community groups which have moved locations or finished their season early to enable the works to proceed.

Roads

October should see reconstruction and widening of Westdale Road (4km east of the Dale River). Tree lopping has been completed on

the section of Westdale Road from Maitland Road to the Dale River. Smith and Hill Roads are currently being worked on. There is a section of Smith Road that has been widened on the crest.

Community Cropping Leases

The previous cropping leases 2018 – 2021 expire on 31 March 2021. In order to allow farmers, community groups and individuals to plan their forward programmes the submissions to lease various blocks are now open and will close Friday 9 October 2020. The submissions must be made on the appropriate forms which can be downloaded from the Shire website or obtained from the Shire office. The leases will be awarded at the Ordinary October Council meeting.

Beverley Heroic

Back again 17 and 18 October is the Beverley Heroic. Toby Hodgson and his crew do a fantastic job organising this event and promoting Beverley throughout their social media platforms. The Heroic brings many new visitors to Beverley and the region. There are events all throughout the weekend for all ages and levels.

Check out <https://www.theheroic.com.au/> for full details.

Station Arts

October is the start of the entertainment season at the Beverley Station Arts and first up is a show for all the Family called Wolfgang's Magical Musical Circus on 06 October. If you enjoyed or missed out on the Reclaimed Piano's back in 2018 then get along to see this. The local Beverley Amateur Dramatics will then have a production Cocky's Crossing 16, 17, 23 and 24 October. Good luck to all involved.

Citizenship



Congratulations to our newest Australian Citizen here in Beverley, Mrs Tieng Cole. Tieng was joined by her husband, friends and Shire of Beverley Councillors and Staff for a Citizenship Ceremony on 22 September 2020.

Cr Don Davis
Shire President

CROPPING COMMITTEE



Leasing of Cropping Committee
Land - 3 Year Terms
1 April 2021 to 31 March 2024

Submissions are invited for the leasing of various reserves. The leases are for three years 1 April 2021 to 31 March 2024.

Cropping Submission Forms are available on the Shire website or from the Shire Office - 9646 1200. Submissions close Friday 9 October 2020 and must be on the Cropping Submission Form.

Shire of Beverley

DRUM MUSTER

Monday 12th October 2020

**BOOKINGS ARE ESSENTIAL
PHONE (08)9646 1200**

Drums must be:

- Triple rinsed
- Lids to be removed
- Steel drums must be punctured through the top, out the base

Following Sizes Accepted:

STEEL	PLASTIC
<ul style="list-style-type: none">• <20L• 20-25L• 200-205L	<ul style="list-style-type: none">• <20L• 20-25L• 100-120L• 200-205L





Beverley COMMUNITY MARKETS

THE FIRST SATURDAY OF THE MONTH
 BEVERLEY CWA HALL
 CORNER OF VINCENT STREET & DAWSON STREET
 9.00am - 12.00noon

There will be a sausage sizzle plus markets stalls.
 Come in and grab a bargain while supporting the
 Beverley Skate Park.

All proceeds go to support our local kids!!

New sellers welcome at \$6 per table

Call Val Tylor 0428 601 416 for information



A step by step guide to effective and economic waste management

Proper chemical container rinsing can save you money. It's simple.

Uncleaned containers with left over residue could contain up to
\$10 worth of product.

drumMUSTER suggests the following steps to prevent you pouring
 money down the drain:



1. Rinse out your drumMUSTER containers immediately after using them.



2. Pour the rinse water back into the spray tank and ensure the container is clean throughout.



3. Remove lids and puncture metal containers.



4. Allow drums to dry.



5. Check drums again for any left over residue and rinse if residue remains.



6. Return them to your nearest drumMUSTER site. This can be found at www.drummuster.org.au

A few 'simple steps' to help
 save money with responsible
 waste management...



 **drumMUSTER**

Effective Rinsing Guide

WWW.DRUMMUSTER.ORG.AU



Farewell Mervyn Ashton

On behalf of my husband, Mervyn Ashton. I would like to convey how lucky he was to have had the opportunity to spend the last few years in Beverley.

To all his friends, the amazing **ambo's, doctors, hospital staff,** medical professionals & volunteers, he was so grateful for your professional help and genuine friendship. Mervyn loved his Beverley friends and looked forward to visiting the town to catch up with everyone. He especially loved the visits from locals to the property as they dropped by to chat and check-in on him. The true country hospitality was something that gave him great joy even when he lamented not travelling with the circus, a life he was born into and often missed.

Being born and bred into his well known family circus dynasty, Mervyn was the ultimate traditional Australian Circus Performer and an all round nice guy.

For more information on the Ashton family please visit circusjosephash-ton.com.au or visit Facebook pages, Mervyn Ashton and Ashtons Circus, also visit YouTube to find various archival footage of the family including Mervyn on 'This is Your Life' and 'Ask The Leyland Brothers' to name just two.

R.I.P Mervyn Ashton - 1938-2020
A Circus Legend, and Beverley Local.

SMALL LANDHOLDERS FIRE AWARENESS



A Small Landholders Fire Awareness Dynamic Display

**Date: Saturday 31 October at the
Venue: Beverley Amenities Building & Town Oval
Time: 11.00am to 1.00pm**

There will be information, instruction and display of firefighting units that can be used to comply with the Shire of Beverley's Fire Break Order as well as general advice on bushfire season preparation and prevention strategies.

A light lunch will be supplied however bookings are essential. Please RSVP your attendance to the Beverley CRC 9646 1600 before Wednesday 28 October



RESTRICTED BURNING PERIOD

Section 17 (7) Bush Fires Act 1954.

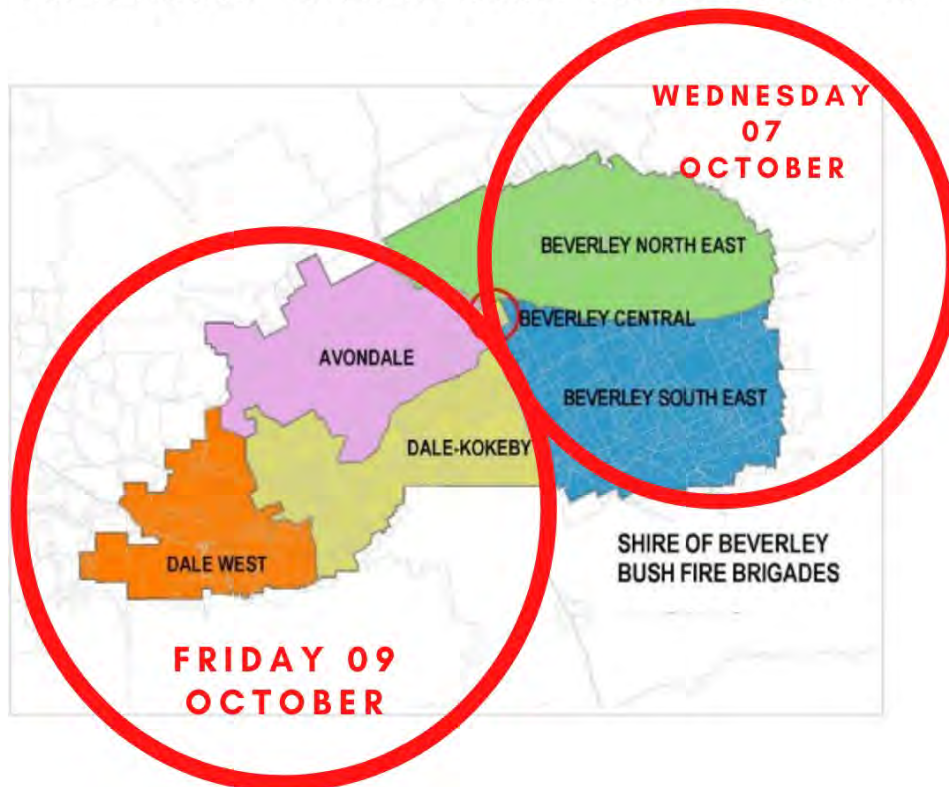
Notice is hereby given that the
RESTRICTED BURNING PERIOD will commence
3 October 2020 - 14 November 2020

A Permit to Burn will be required from the Shire website.

Stephen P Gollan
CEO - Shire of Beverley

FOR ALL FIRE EMERGENCIES PLEASE CALL 000

2020 - 2021 FIRE SEASON PREPARATION AND ANNUAL GENERAL MEETING'S



The **Beverley South East and Beverley North East Bush Fire Brigade's** are holding their fire season preparation training and AGM on **Wednesday 07 October from 4.30pm** at the Morbinning Hall and Bush Fire Brigade's shed, on Morbinning Road.

Small landholders are encouraged to attend with their firefighting units for pre-season function checks and instruction will be provided for those who are new to the use of firefighting units.

Following the AGM a barbecue will be provided so please RSVP your attendance to your local Fire Control Officer (FCO) being Brett Shaw, Ben Murray or Deane Aynsley before Monday 05 October.

The Avondale, Dale Kokeby and Dale West Bush Fire Brigade's will hold their fire season preparation training and AGM on **Friday 09 October from 4.30pm** at the new Dale West Bush Fire Brigade shed on Mann Avenue off Westdale Road opposite the CBH bins.

Small landholders are encouraged to attend with their firefighting units for pre-season function checks and instruction will be provided for those who are new to the use of firefighting units.

Following the AGM a barbecue will be provided so please RSVP your attendance to your local Fire Control Officer (FCO) being Andrew Shaw, Rob Fisher or Paul Schilling before Wednesday 07 October.

Contact details for all FCO's can be found at the Shire of Beverley webpage via the Fire Control link under Services. beverley.wa.gov.au/services/fire-control.aspx

BEVERLEY HISTORICAL SOCIETY

On Saturday 12 September our volunteers were very busy with 20 visitors from the Veteran Car Club in the morning and 12 members from a Caravan Club in the afternoon.

Since opening on Sundays, we have had a steady flow of visitors that have been enjoying our lovely Museum. Just a reminder that with school holidays, if you are looking for something to keep the family occupied, why not attempt the Pioneer Challenge (all details on page 21 of this Blarney edition).

On the weekend of 17-18 October, Beverley will be hosting the Heroic cycle race and we will be open both days – check for times – please pop in and see the info we have collected on the event over the years.

Our annual event of the BDHS Year 2's visiting the Dead Finish is in October and we are looking forward to having them join us for the morning.

The Annual General Meeting of the Beverley Historical Society will be held on Monday 12 October at 1.00pm followed by a General Meeting.

New members are always welcome. We hold all our meetings at the Dead Finish Museum.

CAN YOU HELP?

We have received an email from a connection of a Margaret Isabella McLean who married a Herbert George Hoult in Brookton in 1915. H G Hoult was killed in WW1 in 1916.

The enquirer has asked if the email can be forwarded to any member of the McLean family who provides an email address to bhsdeadfinish@gmail.com or by phoning Morag on 9646 1541.

NATWAY FURNITURE & CONSTRUCTION

ABN: 62 824 726 465

WAYNE & NATALIE ASHWORTH

Qualified Carpenter &
Joiner Tradesman

General Building Work

Furniture Construction
& Restoration

CONTACT US

27 Brooking Street, BEVERLEY

Wayne 0417 973 415

Natalie 0429 491 039

natwayfc@bigpond.com

SARAH SOMERS LAWYER

85 Fitzgerald St, Northam
P | 9622 9687
E | sarahsomers@inet.net.au

Family Law – Divorce – Separation

Property Settlement - Restraining Orders

Defacto Relationships - Children's Issues

Contact/Residence - Competitive hourly rates

Reduced fee for Initial Consultation

Serving the Wheatbelt Community

BEVERLEY CHIROPRACTIC CENTRE Dr Liam Welfar

CORNERSTONE BUILDING

141 Vincent St, Beverley

(Entrance off Dawson St)

08 9646 0523

Back Pain? Neck Pain? Headaches?
Sporting Injuries? Postural Problems?
Call us today to find out how I can help.

Hicaps facility available onsite



Take the opportunity to join in gentle activity aimed at general fitness and falls prevention.

Stay Active with the Beverley Everlastings

Stay Active is a weekly one-hour keep fit session for those who find gentle aerobic, strength, balance and stretching exercise beneficial to their health.

The exercises are designed for over 50s, but younger participants are welcome. Those less mobile or those recovering from accident and illness also find the exercises useful.

Chair exercises are available and participants can opt to do all or some of these.

New procedures will be in place for signing in and use of equipment. There will be no cuppa afterwards.

TUESDAY'S
Time - 9:00 am
Beverley Lesser Hall
Cost - \$1.00

Come along for a social distancing fun activity. Stay Active is a volunteer community health program coordinated by the Wheatbelt Health Service

Beverley Amateur Dramatics Presents...

Cocky's Crossing

A Musical Comedy

Written and Composed by Max Harvey

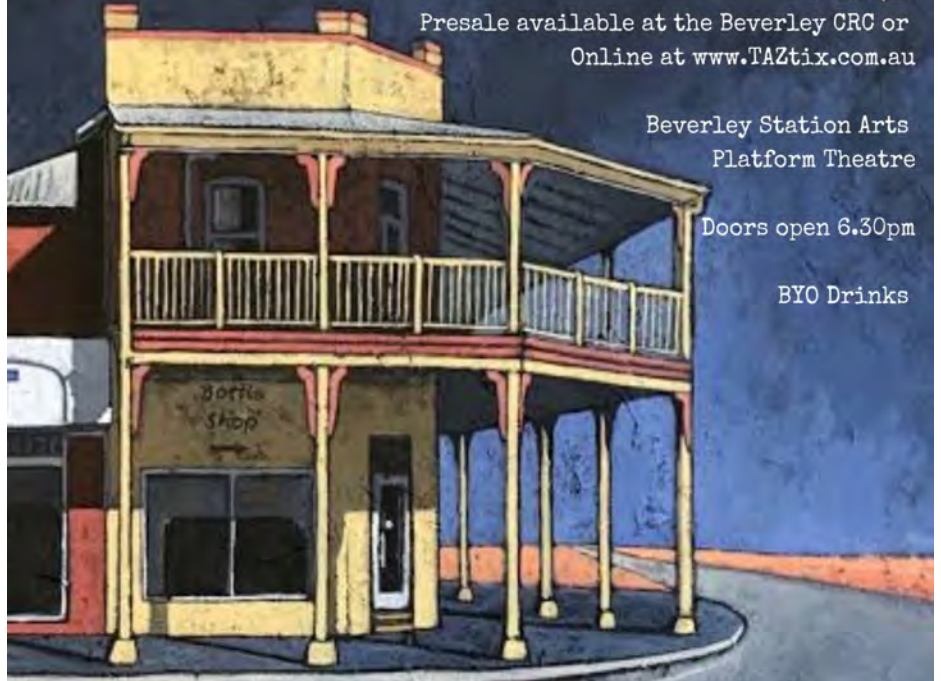
A community theatre production by kind arrangement of TAZ Entertainment

Tickets: \$25

Concession: \$20 (presale only)

Kids: \$15

Presale available at the Beverley CRC or
Online at www.TAZtix.com.au



Beverley Station Arts
Platform Theatre

Doors open 6.30pm

BYO Drinks

2020 Performance Dates

Friday 16th October

Saturday 17th October

Friday 23rd October

Saturday 24th October



Beverley
MASSAGE THERAPY

Christine Hagan

EVERY Wednesday 1.30pm - 6.30pm
PLUS Tuesday, Friday OR Saturday
9.30am - 2.30pm
(day varies each week)

Enquiries and Bookings:
0408 369998 or book online at
www.facebook.com/vitaminAskincare

In Beverley Chiropractor Centre in the Cornerstone
Building (Entrance off Dawson Street)



Based in Balkuling...Servicing Statewide!

For all your Lime, Gypsum, Urea, Sulphate of Ammonia,
Chook Manure and Compound Fertiliser Spreading needs.

We also supply, deliver and spread Fertiliser from bulk bags for Hobby Farms!

Ph. Jim - 0427 777 765
ballantyne@bordnet.com.au



**Wongan Hills, Dalwallinu, Dowerin
& Northam require a
SALES – CAREER DEVELOPMENT**

The business is searching for a motivated person whom is interested in building and developing a career in Farm Machinery Sales. The appropriate person will be strongly focused at building relationships internally and externally of the business, is detail orientated and is prepared to apply the necessary energy to develop their professional sales career in this extremely exciting industry. The rewards are significant and with the appropriate attitude and effort the person would be well remunerated for their achievements. To assist the best person, the business is prepared to invest the time and resources to support the development of your career. The business will ensure you are supported appropriately and will offer all the necessary training and development required to assist you to achieve great career success.

We openly encourage persons whom are interested in joining this progressive family business and are willing to put the appropriate effort in developing their selling and sales skills. Great incentive structures will be provided to entice and retain the best candidate and position you for absolute success in the years ahead. To join this progressive business and be a part of a unique development opportunity, we request that you email a confidential detailed resume that covers your prior work history to hr@boekeman.com.au

THANK
YOU

Thank you Steve Davis,
builder from Pingelly,
for the new bathroom
and renovations.

Very pleasant and
professional work.

Well done Steve & Bryce.

From Pat & Allen Lane



**If you have a swarm or
worried about bees in or
around your property,
don't hesitate to give me a
call. I can come around and
look and assess the
situation and discuss what
can be done to help.**

PHONE: 0478 018 099



AVON TERRACE DENTAL | YORK
your smile. our passion.

Now Open 9am to 5pm Monday to Friday!

Our Services:

- Preventative and General Dentistry
- Children's Dentistry
- Anxiety Management
- Cosmetic Dentistry
- Implants
- Endodontics
- Crown and Bridge
- Teeth Whitening
- New Dentures and Repairs
- Dental Care for Travellers
- Emergency Dental Care
- Veterans' Affairs

New Patients Welcome!

129 Avon Terrace
York WA 6302
(08) 9641 2123



**OPTOMETRIST
AVAILABLE ON
TUESDAY'S
in Beverley**



**Peter Tidman
OPTOMETRIST**

**If you are over 65 years of age,
you are entitled to a yearly
bulk billed check-up.**

**We encourage you to keep
on top of your eye health.**

**You can find us at the
RSL Hall, 50 Forrest Street, Beverley.**

**Appointment bookings
Please call Beverley CRC 9646 1600.**

NOTICES and MEETINGS

NOTICE OF AGM FRIENDS OF THE DALE RIVER

Annual General Meeting
will be held on
**Sunday 18 October
at 10.30am at the
Reserve Pool, Dale.**

Enquiries
Linley Thompson
0429 953 800



BEVERLEY RSL SUB BRANCH

All members please be advised
that the next monthly
General Meeting will be held on
Wednesday 07 October
at 1730hrs (5.30pm).

We will then decide the day
and time for the future monthly
meetings to organise Poppy
sales and Remembrance Day
Ceremony details.

All current, former and new
members are encouraged to
attend.

This is YOUR RSL Sub Branch
David J Morton - President

Memorial Service for Mark Thornton

Mark Thornton's wake will
be held at the
Freemasons Hotel on
Saturday 10 October,
commencing at 3.00pm.

All welcome to pop in and
have a cuppa or a beer or 3.

Bar snacks provided.

See you there.

Maree Thornton



NOTICE OF AGM BEVERLEY COMMUNITY RESOURCE CENTRE

The CRC Annual General
Meeting will be held
Wednesday 21 October 2020
At 4.00pm
In the conference room at the
Cornerstone Building.

Enquiries to 9646 1600

weightwatchers



Weight Watchers - Beverley

Meetings Mondays at 9.30am
For more information,
call 0487 933 004.

URGENT!!

Do you have a
St John Benefit Renewal?

St John have changed
computer programs and have
had huge issues with benefit
renewals in the past months.
If you have not received your
renewal please contact us
urgently.

E: bevfarmservices@wn.com.au
or phone Jenny on 96461420 or
0407 461371



NOTICE OF AGM

Beverley Agricultural Society is
holding its AGM at 7.00pm on
Wednesday 28 October 2020.
The meeting will take place at
Hotel Beverley 137 Vincent St,
Beverley.

For a copy of the agenda or any
other queries please contact:

Sue Martin

beverleyagsociety@gmail.com

Phone 0427 771 054.

BEVERLEY Transport

Your local carrier for over 30 years.

**GRAIN, FERTILISER, LIME, HAY,
WOOL AND SIDE TIPPERS AVAILABLE**

Garry & Sarah Miller

0428 464 066

admin@beverleytransport.com.au

Established in 1997, proudly servicing Beverley and surrounding areas



BEVERLEY GAS + PLUMBING SERVICES

PL 9723
GF 017690
BFL 3108

**Beverley Gas and Plumbing is your local plumber
for all your plumbing and gas needs.**

- Renovations
- Septic and leach drains
- Gas installs and maintenance
- Hot Water
- Blocked drains
- Dripping taps
- Backflow prevention
- Sewerage conversion

Kodie Fleay
Phone 0418 929 141
Email beverleygandp@gmail.com



Beverley GARDEN AND TREE SOCIETY

Members of Beverley Garden club replaced the monthly meeting with an outing to York to visit a private garden and the nearby wildflower garden. Due to inclement weather, numbers attending were low but those who did enjoyed the outing.

The Annual Rose Show will go ahead as planned unless the COVID 19 takes a turn for the worse and we are shut down again. The date is set for October the 23 and 24 and we are hoping to have a bumper crop of roses again this year.

The next meeting will be at the Dead Finish at 10.30am on Tuesday 06 October and a visit to the Brooking Street reserve.

Tips for Planting in October

With the weather warming up nicely, there's no better place to be than the backyard. October is a huge month in the patch. With so many varieties to plant, you'll be struggling to get it all done. So, welcome to October, a fine time to be in any sort of garden. Remember to use all your senses in the garden. Watch for pest issues, feel for soil moisture, smell your soil, and... most importantly... taste the fruits (or vegetables) of your labours. Let's get into it...

Weeding

Weeding is a great job to do at this time of year.

Tomatoes

It's time to plant everyone's favourite – tomatoes. By now your soil should be good and ready, so head to the local garden centre, pick a few varieties, and get going.

Don't forget their mates Basil and French Marigolds. They are great companions, and no tomato patch is complete without them.



Phone 9646 1347
104 Vincent Street
Beverley WA 6304
Geena 0448 281 158
Steve 0448 281 044

freemasonstavernbeverley@westnet.com.au

<i>Weekdays</i>	MONDAY - FRIDAY	OPEN FROM 4.00PM
	EVENING MEALS	6.00PM - 8.30PM
<i>Weekends</i>	SATURDAY & SUNDAY	OPEN FROM 11.00AM
	LUNCH	12.00PM TILL 2.00PM
	EVENING MEALS	6.00PM TILL 8.30PM

THE TRADING HOURS ARE SEASONAL. PLEASE ENQUIRE FOR FUNCTION BOOKINGS.
Times are negotiable for bookings of 15+



Beverley **GARDEN AND TREE SOCIETY**

Why not give these a try too:
capsicum, spring onions,
cucumber, pumpkins, squash,
zucchini, rosella, sweet corn,
eggplant and watermelon.

For some super herbs try basil
(both sweet and purple),
parsley, sage, pyrethrum,
lemongrass, oregano, rue and
marjoram. Mint is ready to go,
but you might want to keep it
in a nice sized pot to prevent a
serious mint invasion.



Sunflowers

Now is the time to plant some
sunflower seeds. Find a sunny
spot where you would like to
see some happy sunflowers
later in the year, and plant the
seeds to double the depth of
the seed. Cover lightly with dirt
and wait. Also nasturtium,
dianthus, Livingstone daisies,
verbena, snapdragons,
petunias, chrysanthemums,
Shasta daisies, marigolds
(French) or celosia.

These are all great at attracting
pollinators and beneficial
insects to your garden.

Remember to mulch

Top up mulch on your veggie
patches, herb gardens and
ornamental beds. Choose a
sustainable, low environmental
impact mulch that will enrich
your soil as it breaks down.

Tools

On non gardening days head
out to the shed, and sharpen,
clean, oil and maintain your
garden tools. It's really
rewarding and will save you
money and plant problems in
the long run.

LEH



EARTHMOVING

LOCAL BUSINESS, SERVICING BEVERLEY FOR OVER 10 YEARS

Beverley Earthmoving & Grading

**GRADER - BACKHOE - BOBCAT
TIP TRUCK - EXCAVATOR
SIDE TIPPER - DOZER**

ROAD BUILDING AND MAINTENANCE

FIRE BREAKS - CONTOUR BANKS - ROADED CATCHMENTS

**HOUSE PADS - SEPTIC SYSTEMS - SAND, GRAVEL AND BLUE METAL
DAM BUILDING AND CLEANING**

CALL- DAN WILKINSON

0417 093 090

EMAIL- DAN.ZOE@BIGPOND.COM

WWW.FACEBOOK.COM/LITTLECOHILLEARTHMOVING/



- **All Sizes & Brands**
- **New & Secondhand**
- **Balancing / Repairs**
- **Batteries**
- **Ag / Truck / Light Vehicle / ATV / UTV**

4B DAWSON ST, BEVERLEY WA 6304

0407 457 427

beverleytyres@gmail.com ON-CALL 24/7



OPEN COMMUNITY INVITATION

Official Opening Community Garden

FRIDAY 16 OCTOBER FROM 10.30AM

Official Opening at 11.00am to be followed by a light lunch.

Enquiries to Betty 0400 569 971.



Shire of Beverley

Pet Registrations

Please note that dog and cat registrations for the Shire of Beverley are due on Saturday 31 October.

Pet microchip information is required for all registration documents, be sure to bring it with you.

Renewal notices been posted.

TAX RETURNS

FORTIZ BUSINESS SOLUTIONS

(Registered Tax Agent & Certified Public Accountant)

Tax Returns for all entities
Business Consulting
Software solutions / setup
Bookkeeping / Accounting

OFFICE HOURS:

FRIDAY 9.00am – 4.30pm

101 VINCENT ST (Bankhouse) BEVERLEY

Please phone for an appointment

9646 0282

York Chiropractic

MacLachlan Centre – 4 Trews Road



Clinic available every week

9641 1500

Dr Alexandra (Sacha) Browne

B.Sc (Chiropractic) B.Chiropractic



Also available in Cunderdin and Merredin



INSTAGRAM MASTERCLASS

FOR BUSINESS & ORGANIZATIONS

MONDAYS 1PM - 3PM
FOR 6 WEEKS \$25 PER WEEK

COURSE CONTENT

Instagram App # Branding # Hashtags # IGTV # Videos # Reels
Caption Writing # Canva Design # Conversion Ladder # Scheduling

- INCREASE FOLLOWERS
- IMPROVE YOUR ENGAGEMENT
- GAIN LEADS & MAKE SALES

STRICTLY LIMITED SEATS - BOOKINGS ARE ESSENTIAL
PHONE 9646 1600



VOICE OF THE AVON
101.3 FM LOCAL PROGRAMMING

SUNDAY

6.00 – 9.00 Country Junction - Frenchy
9.00 – 12.00 Sunday Morning Coming Down - John
12.00 – 2.00 Easy Sunday - Denni
2.00 – 4.00 Good Time Oldies – John Dubber

MONDAY

6.00 – 10.00 Monday Breakfast - Bob
10.00 – 1.00 Monday am - Leslie-Ann
1.00 – 4.00 Round the Bend. Over the Hill
– Rhonda & KT
4.00 – 7.00 Celtic Note - Joe
7.00 – 10.00 Classical Sounds - Chris

TUESDAY

6.00 – 9.00 Tuesday Breakfast - Bob
9.00 – 12.00 Around the World - Leila
12.00 – 3.00 Happy Trails - KT
3.00 – 6.00 **Rockin' on the Avon** - Denni
6.00 – 9.00 Turn it up Tuesday – Michael

WEDNESDAY

6.00 – 9.00 Solid Gold Breakfast - Frenchy
9.00 – 1.00 A Little Bit of Everything – Joe-
1.00 – 4.00 Potpourri - Peter
6.00 – 9.00 Back to the Future – Frank

THURSDAY

6.00 – 9.00 Thursday Breakfast - Rhonda
9.00 – 12.00 Thursday am - Bob
12.00 – 3.00 Kaleidoscope – Chris
3.00 – 6.00 Drive - Graham
6.00 – 8.00 Good Time Oldies 2 – John Dubber

FRIDAY

6.00 – 10.00 Friday Breakfast - Bob
10.00 – 12.00 Memory Lane - KT
12.00 – 3.00 **Michael's Mix Up** - Michael
3.00 – 6.00 **Tonk'n Along** - Tonks
6.00 – 9.00 Jazz Club - John

SATURDAY

6.00 - 9.00 Solid Gold Breakfast - Frenchy
9.00 – 12.00 Spirit of the Music - George
12.00 – 2.00 Country Trax - Haydn
2.00 – 4.00 Saturday Mix – Graham
4.00 - 6.00 My Kind of Music – Lesley-Ann
6.00 – 9.00 Saturday Party –Nada

Phone: Studios 9641 2422

Sponsorship: 0439 417 664 (York)

Beverley, 0420 832 321.

Northam & Goomalling, 0412 295 504.

Email: radio6ycr@hotmail.com

Facebook.com: Voice of the Avon 101.3 FM –
6YCR (with live streaming)

Website: www.voiceoftheavon.org.au
– live streaming of Voice of the Avon 101.3 FM

97 hours of local presenters each week.

Effective 21 September 2020

BEVERLEY DISTRICT HIGH SCHOOL

SCHOLASTIC Book Fairs

YOU'RE INVITED TO OUR SCHOLASTIC

BOOK FAIR

SNOW MUCH TO SEE AND
READ AT OUR BOOK FAIR



FIND THESE BOOKS AND
HUNDREDS MORE AT THE FAIR!

**Dates: Tuesday 27 October to Thursday
29 October 2020: 8.30am to 3.30pm**

EVERY PURCHASE YOU MAKE EARNS **LEARNING AND
LITERACY RESOURCES FOR OUR SCHOOL**

SCHOLASTIC



BARCLAY
BOOKS

New, Used & Collectible Books
If it's not in stock we will find it for you!

Open Thursday – Sunday, 9am – 5pm

Old Fire Station, 151 Avon Tce, York

9641 1665, info@barclaybooks.com.au

barclaybooks.com.au

NORTHAM MAZDA

#A Good Deal Closer



NORTHAM MAZDA – YOUR LOCAL MAZDA DEALER IN THE WHEATBELT

ALL NEW Model BT50 coming Soon!!

Powered by a brand new Turbocharged 3.0litre, 4 cylinder diesel engine that generates 140KW peak power along with 450Nm torque for exceptional pulling power, ride and comfort!!

Register your interest NOW by ringing Jo or Bryan on 9622 1188

THE ALL NEW - NORTHAM SUZUKI FOR SALES AND SERVICE



Baleno from \$16,990 Drive-Away

Vitara from \$25,490 Drive-Away

Cnr Peel Terrace & Oliver Street Northam

T 08 9622 1188

DL 23965

www.northammazda.com.au




AVON GLAZING

Everything Glass...

Windows Splash Backs
Mirrors & More

Ron Robinson
0427 185 291



DJ YATES

Authentic Heritage Restoration

BRICK AND STONEMASONRY
RESTORATION
AUTHENTIC REPOINTING OF
MORTAR, RISING
DAMP RECTIFIED
PROPERTY
MAINTENANCE



PHONE DAVE
0419 041 542



BROOKTON PLUMBING

ABN: 37 675 595 336

FOR ALL YOUR
PLUMBING MAINTENANCE
AND GAS FITTING NEEDS

*PLUS SEPTIC WASTE
REMOVAL

PHONE:
SEAN 0413 480 543 or
NATASHA 0422 013 889

PL: 7130 GF: 006947 SWR: T235



Beverley Community Garden

MEMBERSHIP APPLICATION FORM



NAME: _____

ADDRESS: _____ POSTCODE: _____

MOBILE: _____

EMAIL ADDRESS: _____

Preferred contact method:
 TEXT EMAIL GARDEN NOTICEBOARD NO PREFERENCE

Garden Membership Fees (Per annum) this fee is to enable the Beverley Community Garden Management Group to cover some of the costs of running the Community Garden. The Membership fee also includes basic membership to Beverley CRC.

ANNUAL MEMBERSHIP FEES
 \$20 Single Membership \$30 Family Membership \$30 School Group
 Single and family concession by personal arrangement.

MEMBERSHIP TERM
 Start Date 13/07/2020
 Finish Date: 12/07/2021

PLEASE TICK:
 I hereby apply to become a member of the Beverley Community Garden
 I HAVE READ AND UNDERSTOOD THE FOLLOWING:

Beverley Community Garden Code of Conduct
 Beverley Community Garden Membership Charter (enclosed)
 I understand that membership of the Community Garden also requires me to be a member of the Beverley CRC Inc. and that I will also be bound by the rules of that association (fee included in this application)

I am attaching the appropriate fee of \$..... as indicated above.

SIGNATURE..... DATE.....

Please send this completed form and garden membership fee to:
 Maureen Smith
 Beverley Community Garden Membership Officer
 13 Forrest Street, Beverley 5304 OR hand to Officer when next at the Community Garden

FRIDAY BINGO!

FRIDAY 30 OCTOBER

BEVERLEY
CORNERSTONE
141 VINCENT ST

EYES DOWN 1.00PM
FINISHING AT 3.00PM

AFTERNOON TEA AVAILABLE
FOR MORE INFORMATION
CONTACT SAM 9646 1600



Bingo				
7	28	38	59	66
X	X	X	X	X
14	29	39	44	4
X	17	37	5	4
8	X	40	60	7



Beverley Community Resource Centre
Your local connection



Beverley Community Garden

The Beverley Community Garden will have its Official Opening on Friday 16 October commencing at 10.30am. All community members are invited to attend. Light refreshments will be available. Come in and see what your community garden has achieved in such a short time.

We have beautiful, organically grown vegetables ready for sale so why not come in on a Tuesday or Saturday morning, see Betty or Maureen and add some healthy greens to your meals.

The street stall and wood raffle in September was once again very successful, yielding new members and raising funds to allow us to continue to develop the garden. Shirley Griffin won the wood raffle. Thank you to all our wonderful community members without whose support we could not continue.

Murray has almost completed building the grape arbor and Errol is doing a great job in erecting a fence around the property and made the gates to enhance it.

The weekly garden maintenance days continue each Tuesday from 10am and Saturday from 9am. Everyone is welcome to come, no matter what your level of gardening knowledge or ability. Just pop in for a look at the garden, have a chat or a cuppa. If you would like to become a member of the Community Garden, contact Maureen or come to the garden on a Tuesday. Membership is \$20.00 per person or \$30.00 a family or school group.

If you have any items that you would like to donate, please ring Betty on 0400 569 971, Maureen on 0429 460 073 or Dorothy on 0429 989 031 to arrange a pick up or for any further inquiries.

Community Garden Donations

Murray Young	Building the grape arbor
John & Leita Barrett-Lennard	Sheep manure
David Adams	Large straw bales X 6
Terry Falkingham	Wood for the raffle
Joan & Barry Ross	3 Tables and 6 chairs, pot plants, old farm gear
Janet	2 Trestle tables and portable gazebo
Eric Beer	Help with erecting metal art work
Drew & Cliff Doncon	Timber for arbour and a gazebo roof
Laurie Lupton (Brookton)	150 tomato seedlings and other plants
Lyn Murphy	Beautiful restoration of bench
Betty Lobb	Bench seat
Colin Day	Use of car trailer to move gazebo roof
Fred Sing	Use of trailer to collect rocks
Beverley Shire	Compost from tip
Graeme (Tip manager)	Compost and plant pots
Brett Shaw	Jarrah posts for gazebo
Errol Squire	Fence building
Various community members	Monetary donations



- FOR SALE -

\$2 Advanced Tomato Plants

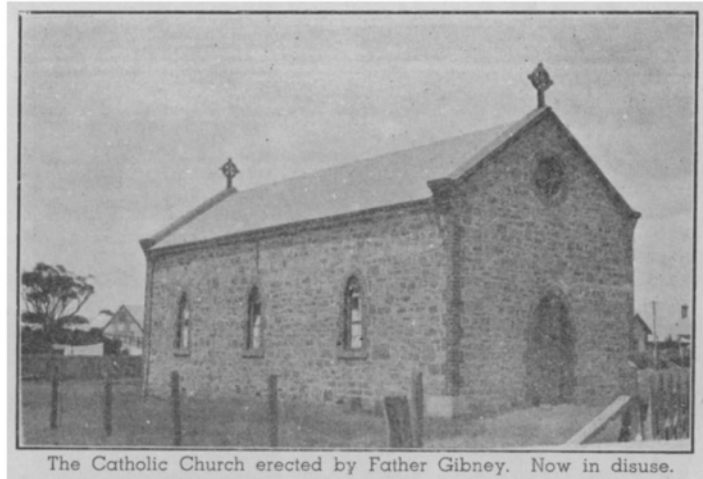
Contact Betty 0400 569 971 or
Maureen 0429 460 073



Beverley Historical Society presents another
BEVERLEY PIONEER - Mrs. Annie Maria Moulton

Annie Maria Moulton was a member of a pioneering family, being the youngest daughter of the late Mr. and Mrs. T. Otway, who were among the first settlers at the Dale. Born in the district in 1874 she received her early schooling in Beverley and spent the whole of her subsequent life in the district.

In 1890 she married Louis James Moulton, the ceremony being performed at the old Roman Catholic Church in Queen Street, Beverley. Five daughters and five sons were born of the union and these together with a husband were left to mourn the passing in 1935 of one who in the home circle proved herself a loving wife and mother and in outside life was a friend to all.



The Catholic Church erected by Father Gibney. Now in disuse.

The ten children of Annie Maria and Louis James were: Clara May Maud (m H J Grover), Ellen Grace (m J W Pickles), Ivy Elsie (m F H Callaghan), Bertie James (m E R Rogers), James Matthew (m A Jones), Hilda Ethel (m H L Smith), Louis Bevan (m E M Caudle), Clarence Vernon Patrick (m A Fairhead), Lily May (m J T Pink) and Rede William.

The youngest son, Rede, married Edna Collingwood Jackson, a school teacher at a Dale school, at the Beverley Sacred Heart Catholic Church in 1939. Edna's cream satin wedding dress is now on display in the Dead Finish Museum.

Annie Marie's funeral took place at the Roman Catholic Cemetery Beverley and was largely attended by residents of the Dale and friends from other centres. The Rev. Fr. O'Callaghan officiated and Messrs. Fairhead & Son had charge of the funeral arrangements.

[Note: Does any family member have a photo of Annie Maria we could copy for the BHS Archives?]

Pioneer Challenge

Pioneer Challenge is a fun heritage hunt with the aim of discovering the pioneers of Western Australia. All towns from York to Albany are included in this Route 120 "Pioneer Way" challenge.

The Challenge aims to generate funds for the upgrade and expansion of the Rose Garden at King Edward Memorial Hospital for Women and is managed by the Matilda Bay Rotary Club.

Information about the Pioneer Challenge and how to become involved can be found at pioneerchallenge.com.au



Pioneer Heritage Hunt

TAKE THE PIONEER CHALLENGE

About Pioneer Challenge

Pioneer Challenge is a heritage hunt adventure in Western Australia. It is a fun, exciting pioneer adventure game played on the modern mobile device. The game encourages tourism within our state and takes people to places off the main tourist routes.

"Spending time with our family in the country was truly wonderful. We discovered fun places and have stories and memories to last a lifetime" - Judy

How the game is played

Once registered, the game will issue players with three surprise pioneer towns along route 120. Within these pioneers' towns, players need to find three specified pioneer graves at the local cemetery and historical clues within the township.

There are fantastic prizes to be won, including a first prize of a 7-night holiday for 6 people at Peace Rise Retreat in Denmark, WA valued at \$2,500.



Get Your Team Ready

Get your family and friends together and form a team for this fun and exciting adventure. Register your team at www.pioneerchallenge.com.au.



Funds raised support Rotary charity projects and KEMH Memorial Rose Garden



pioneerchallenge.com.au



Beverley District High School

Independent Public School

Successful, Supportive, Sustainable

For more information about the school, visit our website and Facebook page!

BDHS Faction Athletics Carnival

We were so thrilled that we were able to run our Faction Athletics Carnival as per normal this year. It was a great day with fantastic weather and wonderful supporters to cheer our students along in their running and field events! Over the day we saw great sportsmanship from our factions of Eyre, Dale and Forrest!

We have an amazing group of parents who volunteered to help out on the day as timers, raking the jump pits, measuring and recording. Thank you, these fantastic days would not be possible without you!

A **BIG THANK YOU** to the Shire of Beverley and their ongoing support of the school and our events. You have once again provided us with amazing facilities. We are most appreciative of everything you support us with.

When it came down to who took the shield home.... **CONGRATULATIONS EYRE!!!**



CGSISA Interschool Athletics Carnival

Beverley hosted the CGSISA Interschool Athletics Carnivals this year over 2 days in a Secondary and Primary format. The days went smoothly and the event was enjoyed by all towns and competitors.

Our team of selected interschool competitors competed in the carnival with great spirit and sportsmanship.

Thank you to all of our Beverley parents who helped on the day with the running of events!

Congratulations to all of our team members: you represented our school proudly and the staff were so impressed by your efforts on the day.



Beverley brought home the Primary and Secondary Handicap Shields and came second overall in both Primary and Secondary Carnivals! ***A big Congratulations to Mrs Bailey and her team for running two very well organised carnivals!***



TERM FOUR - SAVE THE DATE

Term 4 Dates - Tues 13th Oct – Thurs 17th Dec

Schools Classic Tennis Final – 16th October

Book Week – Week 3

Secondary Camp – Week 3 Term 4

I/S Swimming Carnival – Pingelly 27th Nov

Graduation Year 6 & 10 – Week 10

Presentation Night – Wed 16th Dec



CWA BEVERLEY BRANCH

September has been a busy month for the members of the Beverley CWA branch, not only did we meet for our normal monthly meeting on the 16 September (third Wednesday of each month) but also on the 02 September we held an extraordinary meeting to elect new office bearers, this was overseen by our state president Elaine Johnson, who together with board member Janet Brooks ensured voting guidelines were adhered to, our membership would like to thank both Elaine and Janet for giving up their time to attend.

From the voting our new office bearers are:

President: Pat Hambly

Vice President: Pat Alexander

Secretary: Sam Mearns

Treasurer: Wendy Hambly

The new committee and members present all agreed that a formal apology should be extended to both the Bridge and Samba clubs for any misunderstanding regarding the hiring or cleanliness of the CWA Hall, we hope in the future that together with these and other groups we can move our association forward with a new and more positive outlook.

Over the past few months our gardens have not been looking the best and this has been noticed (and reported) by not only Beverley Locals but also visiting tourists, so we have started to re-establish our gardens again, and will be posting photo's at the Hall showing our progress, we are also open to ideas to improve things around the building and would certainly welcome opinions from non-members, many thanks to the Shire of Beverley for the grant we have secured to assist with these efforts.

Because our Hall is extensively used by other groups (including Market Day selling activities) we are looking for not only a welcoming colourful garden that reflects our CWA, but also a safe environment for the public.

If you feel you can offer any advice on this subject or would like to know more about becoming a member please contact.

Pat Hambly 9646 1481 or Sam Mearns 9646 0079

BEVERLEY STEEL FABRICATION

- **STEEL FABRICATION**
- **STEEL SALES**
- **HYDRAULIC HOSES**
- **CNC CUTTING**
- **MADE TO ORDER ITEMS**

PHONE 9646 1218



SAMBA - CARD GAME

WHEN: Saturdays **TIME:** 1.00pm

WHERE: CWA Hall, Corner of Dawson and Vincent Street
Afternoon Tea provided. Phone 9646 1271

KARRADALE LIVESTOCK TRANSPORT YORK LIVESTOCK TRANSPORT

ABN 64 054 007 721

We service Beverley, Brookton, York
& surrounding districts

Available to transport Sheep & Cattle

No job too big or small

Support the local communities

Member of ALRTA

If you need stock moved, Peter would love to
hear from you - 0428 481 281





2020 BEVERLEY Open Gardens

In conjunction with the Beverley Rose Show
Community Garden fundraising stalls will be at each garden.

Open both Friday & Saturday in town

Friday 23 October - Town
10am - 1pm | \$5 entry each garden
Kate Badger's - Vincent Street
Mandy Evan's - Vincent Street
Jenny & Russell Hine - John Street

Saturday 24 October - Town
10am - 2pm | \$5 entry each garden
Kate Badger's - 94 Vincent Street
Mandy Evan's - 102 Vincent Street
Jenny & Russell Hine - 45 John Street



2020 BEVERLEY Open Gardens

In conjunction with the Beverley Rose Show
Community Garden fundraising stalls will be at each garden.

Open Saturday ONLY

Saturday 24 October - Westdale
11am - 2pm | \$5 entry each garden
Brian & Geraldine Faithful - 50 Deep Pool Road

Contact Kate 0457 481 199 or Betty 0400 569 971



TA5515854

NEED EXTRA MACHINERY, HAY, GRAIN OR FERTILISER STORAGE?

Phoenix Building Systems
Global Specialists in Modular Steel Buildings

- WA owned family business
- Registered Builder
- Servicing regional WA
- On Site - Expert Advice
- Council Approvals
- Concrete, Water & Solar Options

0427 424 672
admin@phoenixbuildingsystems.com.au

www.phoenixsheds.com.au
/drive-through-sheds




Painter Decorators

All repairs & painting

Lyndon & Cameron Grover
0427 661 302
lydongrover@bigpond.com

Reg: 3941



- Plastering
- Gyprock
- Repairs
- Pressure Cleaning Roof
- Spray Painting
- Gutter Replacing



St John WA - Benefit Fund Update

After many years, the now very familiar St John Benefit Fund renewal notices have received an update. The new St John Benefit Fund membership card will now be a red card, similar in size to a credit card, that should easily fit into your purse or wallet. When paid, the membership will be valid until the date listed on the card.

Even though these new cards and membership renewals are now processed in Perth and sent from Perth, everything else remains the same as always. Your Benefit Fund subscription remains in Beverley for the benefit of the Beverley community. Memberships may continue to be paid by bank transfer, mail or in person at the pharmacy.

Should you have any queries regarding the new Benefit Fund cards or any other membership enquiries, please feel free to contact the sub centre on 9646 1408 (Tuesday and Friday) or email: Beverley@stjohnwa.com.au

Training and Volunteering

Impact CPR is one of the many skills that our volunteers work hard to master at their monthly training sessions.

However, the benefit that is the opportunity to help our community, along with the chocolate reward after training, make our training sessions extremely enjoyable.



**Life goes
on season
after season.**

**Every beat of this ordinary life is an extraordinary thing.
And we need your help to protect it.**

St John volunteers choose their own hours, because we know your life needs to go on, too.

If you'd like to help, visit stjohnchangelives.com.au
or give our Chairperson Drew Doncon a call on 0429 376 116, or
email drew.doncon@bigpond.com

Life goes on.



Thank you and goodbye Rodney Boyle

The staff and management committee at the centre wish to say the biggest thank you ever and goodbye to our longest employed staff member, Rodney Boyle. He has been a wealth of knowledge to many people enquiring about the history of Beverley and the families within the district, this in itself will be irreplaceable. He has seen many changes within the network and cheered on many of the trainees through their time with us and his presence and assistance will be greatly missed by all. We wish him all the best in any of his future endeavours, you will be missed Rodney.

Welcome Maureen Smith

Thank you Maureen for filling in at the centre for a few months while we await results from a grant funding application to employ a trainee. Maureen has previous experience in library services and is the Treasurer at the Beverley Community Garden and we welcome her to the team.

Visitor Centre

The wildflower season has seen a huge boost in visitors to our town. The Brooking Street reserve has had many comments remarking on how clean the pathways are and how pleased they have been by the amount of wildflowers in this area.

Currently the Visitor Centre is only open during the week 9.00am - 4.30pm. The volunteers weekend program is on hold at the moment and weekend hours will be announced in February 2021.

We have been fortunate that David and Julie Paull will be opening for the Heroic weekend and we thank them kindly for their generous support.

Annual General Meeting

To all of our Community Garden Members, you are financial members of the Beverley CRC and have voting rights. You are all welcome to attend our upcoming AGM that will be held on **Wednesday 21 October** at 4pm at the Cornerstone. For more information contact our Secretary 0428 787 806.

INSTAGRAM Masterclass

Give your business that online edge with this 6 week series of workshops.

Do you want to increase your followers?

Improve your engagement?

Gain leads and Make Sales?

Course content includes: Branding, Hashtags, IGTV, Videos, Reels, Caption writing, Canva Design, Conversion Ladder and Scheduling. Monday's 1pm - 3pm for 6 weeks \$25 per week. Strictly limited seats - bookings are essential, phone 9646 1600.

Community Directory

The team are preparing and updating the Community Directory, please check your details are correct and simply email us the changes to: accountsbcrc@westnet.com.au or call our friendly staff.

Rooms for Hire

Do you need a conference room sized space for holding a meeting or workshop? Or even something smaller and more private we have options for room hire the Cornerstone.

Check out our website or come and view the spaces available, contact our team on 9646 1600.



1 - 31 OCTOBER 2020

wabikemonth.com.au



Events for all ages and abilities

Transport, fun, healthier lifestyle



Ride with your friends this October

Perth • Peel • South West • Wheatbelt • Pilbara • Great Southern • Goldfields-Esperance • Mid West • Kimberley • Gascoyne



Department of Transport



#ridetogether WA



Department of Transport



BEVERLEY ROCK N ROLL BIKE CLINIC

@ Moort Wabiny Park pump track.

This is a free community event. It is essential to register by phone, 96461 200 Mon-Fri 9am-4pm as places are limited! An adult will be required to attend on the day.

**SUNDAY
18 OCTOBER 2020**

Three sessions:

Beginner 5-8 years 9am

Intermediate 9-12 years 10.30am

Advanced 13-15 years 12 noon



Be verley
Western Australia
Be very you

PRIMARY HEALTH SERVICES

Available to the community of Beverley

You can refer yourself or your child to the following health professionals:

Child Health Nurse - 9646 3200
to make an appointment, Hospital Admin Staff will assist you in setting an appointment time, which will be on most occasions a Monday.

School Health – 9641 0200

Dietetics – 9690 1320

Occupational Therapy - 0429 466 224

Physiotherapy – a Doctors referral is required – Please send all referrals to P.O Box 140 Beverley or drop them into the Beverley hospital. All referrals are forwarded onto Northam Hospital where they are prioritised and wait listed. Clients will be acknowledged with a letter informing them of the approximate wait time and will be seen in Beverley

Podiatry – a Doctors referral is required
Please send to PO Box 142, Beverley or drop referral to the Beverley Hospital (attendance Fridays) **

Social Work – Phone 9690 1320

Speech Pathology – Phone 9690 1321

- Services are provided at the Primary Health Building, on the corner of John and Forrest Streets, Beverley. There may be a waiting time for services.
- These services are provided by WA Country Health Service and are free of charge. (Please note that the Podiatry Service is a private practice and is not free of charge - there is a fee at first consultation but the WACHS/Beverley Health Service do not get involved in taking fee payments – only assisting at receiving the referrals for appointment. The Doctor's referrals are usually faxed to the service provider, Como Podiatry, who contact the patient by phone and make an appointment).
- If you have any concerns about your own health or your child's health and development, please phone the relevant health professional to discuss your concerns. Alternatively, you can speak to the Child Health or School Health Nurse, or your GP, to discuss your concerns and to determine the most appropriate referral.

*Avon & Central Primary Health
Promoting Healthy Lifestyles*



Shire of Beverley 12 Month Contract - 9 Day Fortnight

Maintenance Grader Operator

The Shire of Beverley Council is seeking a suitably motivated individual to fill the position of Maintenance Grader Operator for a period of 12 months (with the possibility of an extension) commencing as soon as possible. Applications are invited from suitably qualified persons to fill the above position full time for 9 days a fortnight.

The successful applicant will work as a team member to upkeep and maintain the Shire of Beverley's infrastructure and other assets in accordance with Council standards and requirements.

A copy of the position description and selection criteria can be obtained on the Shire website www.beverley.wa.gov.au or phoning Office Administration on 9646 1200.

Applications addressing the selection criteria should be received no later than 4:00pm - Tuesday 06 October 2020 and addressed to:

Mr Stephen Vincent

Manager of Works

Shire of Beverley

PO Box 20

BEVERLEY WA 6304

TREE LOPPING

Wheatbelt **A**rborist **S**ervice **P**rofessionals 

Tree Loppers - Based in Beverley
Tree Removal - Lop, Drop and Chop
Trim - Tidy - Mulch - Remove Debris
Hi-ab Crane Services
Plus General Cartage Available
Fully Insured
ABN 267 723 785 36

MICK HEAVEY

0447 099 947 - Weekends

08 9646 0104 / 0429 456 694 - Weekdays

wasp.treecare@gmail.com





**Shire of Beverley
12 Month Contract - 9 Day Fortnight**

Construction and Maintenance Plant Operator

The Shire of Beverley Council is seeking a suitably motivated individual to fill the position of Construction and Maintenance Plant Operator on a 12 month contract (with possible extension) commencing as soon as possible. Applications are invited from suitably qualified persons to fill the above position full time for 9 days a fortnight.

The successful applicant will work as a team member to upkeep and maintain the Shire of Beverley's infrastructure and other assets in accordance with Council standards and requirements.

A copy of the position description and selection criteria can be obtained on the Shire website www.beverley.wa.gov.au or phoning Office Administration on 9646 1200.

Written applications addressing the selection criteria should be received no later than 4:00pm - Tuesday 06 October 2020 and addressed to:

Mr Stephen Vincent
Manager of Works
Shire of Beverley
PO Box 20
BEVERLEY WA 6304

BEVERLEY QUILTING GROUP

We meet on Tuesday's at the Masonic Lodge in the back room. We start at 9.30am and finish at 2.00pm

\$2 donation per session and BYO lunch.

For further information contact Jan Sherwood on

0438 019 510

Mulesing Contractor



For all your
Mulesing Requirements
Beverley, York
and surrounding areas

Contact Terry Slade
0427 635 065



BEVERLEY ELECTRICAL SERVICES

EC 006578

Proudly servicing Beverley and surrounding districts since 2010, this locally owned family business can help you with all your Electrical needs

Karl and his team offer

- Cel-Fi Mobile Phone Boosters
- Quality LED Lighting Solutions for any application
- Split Air Con Installations
- Trenching for underground power & water pipes
- Quality Solar Systems
- Telephone & Data Cabling
- PLUS we cover all your general electrical installation and maintenance requirements

**0429 887 535 or
9646 1222**

4 De Lisle Street, Beverley
sales@beverleyelectrical.com.au

WESTDALE TIMBER

T/A R.L. & T.L. TAMBLYN ABN. 106 854 06

TREE TRUNKS REMOVED TIMBER SLAB SALES

PLEASE DON'T BURN UP GOOD USEABLE TREE TRUNKS
SAVE THEM FROM THE CROPPING CLEAN UP FIRE
DON'T LET THEM ROT AWAY TO WASTE
I WILL CHAINSAW THE TRUNK OUT OF THE TREES
LEAVING THE BRANCHES FOR YOU TO PUSH ONTO STUMPS
TO EASILY BURN UP

300MM AND LARGER TREE TRUNKS
WANTED DEAD OR ALIVE BY THE TRUCKLOADS
STANDING DEAD OR STORM WINDFALL TREES REMOVED
MARRI/RED GUMS, JARRAH, WANDOO/WHITE GUMS,
SHEOAK, TUART, BLACK BUTT AND PINES

Save yourself time and effort.

PLEASE CALL RICKY 0419 903 829

DRUG & ALCOHOL COUNSELLING

The Wheatbelt
Community Drug
Service Team will
be visiting
Beverley Hospital
fortnightly.

For appointments
please phone
Jackie Darby on
96211 055.

ChemDry[®]
Drier. Cleaner. Healthier.™
Beta Finish



Superior carpet
& upholstery
cleaning

Freecall 1800 017087
bettafinish@wn.com.au
Fax 08 96225473

TV ANTENNAS UHF CB Sales, Service

Onsite installation & repairs.
Bench repairs.
TV reception problem solving
& new systems.
Satellite TV systems supplied and
installed.
Caravan and mobile home TV problem
solving.
Mobile phone reception solutions
for farm and vehicles.

**Regional Antennas
Plus
Phone: Alan Primrose
0408 002 965**

History

Vincent Street



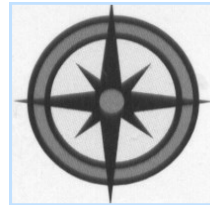
As part of the Heritage Trail
component of the Vincent
Street Streetscape Project,
The Shire of Beverley is
seeking photos or video
footage of **Vincent Street**
(from Hunt Road to the Bridge)
from **ANY ERA!**



If you would like to share a
photo and are happy to sign a
general release form for us to
use a copy of your photo or
video then please contact
Stefan 9646 1200 or email
planner@beverley.wa.gov.au

Thank you to those who have already contributed!

All types



All areas

ALLROUND CONCRETE

**SHED FLOORS, DRIVEWAYS, FOOTPATHS, HOUSE SLABS,
SILO PADS, FERTILIZER/GRAIN/SUPA SHEDS**

ROBBIE HIGGINSON

MOBILE: 0427 384 977

HOME: 9641 2459 FAX: 9641 2339

ABN: 26 997 512 874

PO BOX 345 YORK WA 6302

2020 EVENTS



BEVERLEY STATION ARTS
GALLERY & PLATFORM THEATRE



BEVERLEY PLATFORM THEATRE

TUESDAY 06 OCTOBER

WOLFGANG'S MAGICAL MUSICAL CIRCUS

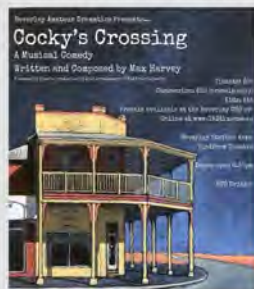
Family show with a circus twist



FRI 16 & SAT 17 OCTOBER
FRI 23 & SAT 24 OCTOBER

COCKY'S CROSSING

Comical musical drama



SATURDAY 31 OCTOBER

CHOIR MUSTER

6 choirs, a Big Sing and concert



SATURDAY 28 NOVEMBER

80'S TRIBUTE NIGHT

Alli Butler - 40 year old Pop Star
Chain Reaction - 6 Piece Cover Band



Check out our website

beverleystationarts.com

Venue Hire

Artists in Residence Program

Workshops

Events

Beverley Art Prize & Exhibition



Like us on Facebook
Beverley Station Arts



Follow us on Instagram

SATURDAY 19 DECEMBER

COMMUNITY CHRISTMAS PARTY

Featuring Matt Hale



PLUS Santa and
Carols by Candlelight

Beverley Station Arts Inc.

120 Vincent Street Beverley WA | PO Box 112 Beverley WA 6304

P| 0419 040 063 E| beverleystationarts6304@gmail.com FB| Beverley Station Arts



BEVERLEY STATION ARTS
GALLERY & PLATFORM THEATRE

Op

BEVERLEY SHOP

The Op Shop is open:

NEW HOURS

Fridays from

11.00am - 2.30pm

Donations bins are located at the side of the Old Fire Station behind the bottlebrushes. We only accept clean clothes that are in good condition.

**Summer stock in on
02 October 2020.**

SHIRE OF BEVERLEY

ADVERTISING ON CORNERSTONE DIGITAL DISPLAY

Advertising is available for local business or for a local profit generating event
*Conditions apply

LOCAL BUSINESS ADVERTISING

LOCAL EVENTS

FEES
\$50 ex GST for set-up & maintenance and \$50 ex GST per calendar month (paid in advance) to display is paid.

Community information and paid advertising will run on a continuous loop between 6.00am and 8.00pm being the operating period (total 14 hours).

A display will run for a maximum 10 seconds

TURNITUP

ELECTRICAL

EC13691

Turn it up electrical has the following solutions at a fair price

- ⇒ Smoke alarms ⇒ RCDS
- ⇒ Testing ⇒ Fault finding
- ⇒ New installations ⇒ Energy efficient lighting

For all your domestic electrical needs phone us on
Travis James

0457 667 950

Email: turnitupelectrical@hotmail.com

Station News

The Station garden is available for public use at any time; just open the gates and enjoy!



Artists-in-Residence at the Station Gallery

September saw five artists and artisans taking advantage of showing their works of art and crafts at the Station Gallery.



Jane Etienne, Geralyn Satur were residents from 10 - 14 September and were joined by Jannis Norrie for the weekend. The gallery was full of their wares and being a long weekend that saw many visitors to town meant they had some good sales amongst them.

(Above) Jane Etienne, Geralyn Satur enjoying the sunshine at the Station.



From the 15th till the end of September Trish Davis and Joy Benevenuto filled the gallery with their individual arts and crafts, mainly textile work. Whilst Trish's specialty is quilting, Joy displayed an amazing variety of work due to her job (pre-Covid) teaching crafts on cruise ships since 2004. Workshops were offered on by the artists on both weekends.

(Above) Trish Davis and Joy Benevenuto in the gallery displaying their textile works.



(L - R) Tania Edwards, Sarah Miller, Joy Benevenuto, Ali Edwards and Jenny Broun enjoying the *Stitch a Village* workshop

So now it's on to October to meet our next Artists-in-Residence...

A dynamic trio - Sally Watts, Suzanne Crawley and Thelma Cluning will be exploring a diverse range of art practice whilst here. Their interests vary; however, they align in their desire to create unique artwork through instructive best practice principles. They plan to hold community engagement free demos and workshops whilst they are here and these will be published widely around town during their residency

..Sally creates incredible small, and large scale sculptures (her speciality being dogs) for this residency) as well as developing drawing and collage as expressive visual forms, with equal expertise.

..Suzanne brings her water colour painting skills to both studio application and plein air, with a special emphasis on expressive, fresh techniques and a keen eye for composition. She enjoys showing how mercurial and versatile the medium can be.

..Thelma works extensively in 'drawing' (and applique) with her sewing machine, and has in recent years developed an illustrative and decorative hand drawing technique to build imaginative, painted forms. As a visual arts teacher, she doesn't limit herself to these and Her interest in hand building clay forms also finds a place in her practice.

Please keep an eye on the weekly Bulletin for further information regarding residencies, workshops or any changes to schedule - or contact A-i-R Coordinator Marylou on 96471027 / 0427085511 or email: hutchinson@wn.com.au

Artists-in-Residence Programme for remaining 2020

October: Thelma Cluning, Sally Watts, Suzanne Crawley

November: 01- 08 Verena Marmion; 09 - 30 Michele Scott

December: Cynthia Boyle and Ngaere Donald from Victoria **CANCELLED**

2021

JANUARY: Shireen Manning

FEBRUARY: Shanti Gelmi

MARCH: Jo Nelson

APRIL: Carollyn Rhodes-Thompson

MAY: Kath Moore. 1st - 15th. Nancy Ballesteros and Kathy Allam. 17th - 31st

JUNE: Jenni Flora August: Rod Brown

JULY: Jane Etienne 22nd - 26th

AUGUST: Rod Brown

SEPTEMBER: Carollyn Rhodes-Thompson

OCTOBER: Alan Pickering

NOVEMBER: Annis Woods (tbc)

DECEMBER:



Beverley Station Singers

STATION SINGERS ARE BACK!

With the new vigour apparent at September 2 session it was decided to meet every three weeks on Wednesdays. That meant gathering again in September (on the 23) to practice for the coming VoiceMove's Choir Muster at the Platform Theatre on October 31. Singing is directed by the talented Kelly Newton Wordsworth, cost \$20. Next session is **Wednesday 14 October**. Sarah Miller is coordinating singing so if you are keen to come along you can phone 0427464078.



Beverley Amateur Dramatics (BAD)

Rehearsals are in full swing now for *Cocky's Crossing*, no matter the weather! This comedy musical will be performed on October Friday 16, Saturday 17, and Friday 23, Saturday 24. **Mark it on your calendars now!** For more information contact Britt Hadlow by email: britt.hadlow47@hotmail.com or beverleyamateurdramatics@gmail.com



Platform Theatre OCTOBER LINE-UP



School Holiday Fun!



WOLFGANG'S MAGICAL MUSICAL CIRCUS

Not to be missed – this amazing event is being performed in only three venues outside of Perth where it is the opening show for the Awesome Festival.
BOOK NOW! Beverley CRC or online www.trybooking.com/BLDHE

A family show with a circus twist! Check out these reviews....

★★★★ - THE LIST, UK "... manic and magical." - THE GUARDIAN, UK "... a must-see show for all the family." - EDINBURGH LIFE WITH KIDS, UK ★★★★★ - "The show is gilded with comedy that had all ages laughing with raucous enthusiasm." - SYDNEY MORNING HERALD, AUS

Circa Contemporary Circus is one of the world's leading performance companies. Since 2004, from its base in Brisbane, Australia, Circa has toured the world - performing in 40 countries to over a million people. Circa's works have been greeted with standing ovations, rave reviews and sold-out houses across six continents.

Straight from the score and onto the stage, the man known as Mozart appears amid a storm of powder, tumbling and twirling, as musical mayhem and movement fuse in this family show with a circus twist.



- **TUESDAY 6 October 2020**
- Beverley Platform Theatre, 120 Vincent St
- **Show starts 5.30pm** 60 minutes duration
- Gates open 5.00pm
- Suitable for 3 years and upwards
- Tickets - General \$25| Children 3 - 15years \$20
- Concession (pre-sale only) \$20
- **Bookings at Beverley CRC**
- or...online www.trybooking.com/BLDHE
- **Seating as per Covid Safety Plan Phase 4**
- Facebook: Beverley Amateur Dramatics

• Please note Sydney prices... Adults: \$45.00; Children: \$25.00 Seniors/Concessions: \$35.00



COCKY'S CROSSING

which is a BAD production where you can see local personalities – many for the first time – tread the boards of the Platform Theatre. Written and composed by Mark Harvey, 'Cocky's Crossing' is a musical comedy so come along for a laugh, you won't be sorry! And with four dates to choose from there's no excuse to not be there!

- **Friday 16 and Saturday 17 October plus**
- **Friday 23 and Saturday 24 October**
- Beverley Platform Theatre, 120 Vincent St
- **Show starts 7.30pm**
- Gates open 6.30pm
- Tickets - General \$25| Children U/15 \$15
- Concession (pre-sale only) \$20
- **Bookings at Beverley CRC or...online**
www.taztix.com.au
- **BYO Drinks**
- Facebook: Beverley Amateur Dramatics

Beverley Amateur Dramatics Presents...

Cocky's Crossing

A Musical Comedy
Written and Composed by Max Harvey

A community theatre production by local commitment to the arts movement

Tickets: \$25
Concessions \$20 (pre-sale only)
Kids \$15



Pre-sale available at the Beverley CRC or
Online at www.taztix.com.au

Beverley Station Arts
Platform Theatre

Doors open 6:30pm
Show starts 7:30pm

BYO Drinks

2020 Performance Dates
Friday 16th October
Saturday 17th October
Friday 23rd October
Saturday 24th October



CHOIR MUSTER

presented by Voice Moves - their first event post-Covid as they muster choirs together for a fun day out in the country. An event for the whole family... where you will hear a few choirs singing and also have the opportunity to sing with gusto for a community big sing - to be led by some wonderful Musical Directors: Tim Fisher, Harry Oliff and Kelly Newton-Wordsworth.



Hosted by Beverley Station Arts

- **Saturday 31 October at 2.00pm – 5.15pm.** Gates open 1.30pm
- Country Choir Muster presented by "Voice Moves" (WA's major choral association)
- Saturday 31 October 2.00pm – 5.00pm (tea break 3.20pm – 3.45pm)
- Beverley Platform Theatre, 120 Vincent St
- Cost \$10 at the door/gate or online www.trybooking.com/BLREC (children half price)
- Country style afternoon tea at intermission
- Hats and sunglasses if warm; Rug up if cold; If inclement weather the event will be relocated to the Town Hall

Worthy of note is this comment from VoiceMoves!

"As this event is used as a fund-raising event for the town of Beverley, Voice Moves support their effort by asking the singers, friends and visitors to pay \$10 as a gate fee which aids the Beverley Arts Community. This includes not just a great concert but the most spectacular afternoon tea. For those who have attended before you already know that the afternoon tea served at Beverley is befitting royalty - but due to Covid they are unable to travel to Australia. However, the lovely ladies from the Beverley Station Arts Committee who are our hosts for the day always ensure that all those in attendance feel like royalty."



Volunteer Thank You

- Sam and Bec from CircuitWest, Lisa Green and Sarah Miller for their continued work with grant applications,
- Barry Knight for installing a new clothesline at the residence, and spraying the roses and
- Shire of Beverley for maintenance of stage and greenroom

Station Gallery Open Hours: 11.00am – 3.00pm Thursday, Friday, Saturday and Sunday

Jenny Broun, President, Beverley Station Arts: 0419040063 / brounj@westnet.com.au

Unique Strokes W.A. Painting & Decorating

Reg. No. 4236

ROB BAIN

QUALIFIED LOCAL TRADESMEN

For Guaranteed Traditional
Workmanship & Prompt Free Quotes

Phone: 08 9647 2102

Mobile: 0418 904 013



E Squire Contracting Services

Water Supply
Windmills & Accessories
Solar Pumps:
Sales, Service, Installation
Fencing & Yards
Trenching & Poly Pipe Laying

E Squire Contracting Services
Beverley and surrounding districts

Phone: 9646 0800

Errol Squire 0438 682 687

Beverley Station Arts Membership

Sadly, due to COVID19 and like many other organisations, we have been forced to cancel our events for some of this season. However, we are continuing to plan for the future and are currently looking at performances which we hope to present to you later this year and going into 2021. We hope that you will continue to support us 2020/21.

Being a BSA member makes you part of your local community and provides a sense of ownership of the Station.

All members have the opportunity to take part in the Station's governance.

As a Member you will receive:

Discounted rates for all events at the Platform Theatre	Invitation to AGM and Voting rights
Free entry to the Easter Art Exhibition	Eligible to nominate for BSA committee positions
Invitation to Station Gallery exhibition openings	BSA Annual report

Please detach and return with your payment to:

Pauline Knight
Beverley Station Arts Incorporated
P.O. Box 112 Beverley W.A. 6304

Cheques should be made payable to: Beverley Station Arts Inc.

OR, paid directly into our bank account:

New membership \$30 pp (or \$50 per couple)	Renewal \$25 pp (\$40 per couple)
BSB 016 540	
ACCOUNT 2024 40346	

For further information please contact: Pauline Knight on 9646 0946 bpateam2@bigpond.com

RA-AN ENTERPRISES

EARTHMOVING CONTRACTOR

Dam sinking
**Dam cleaning &
enlargements**
Fence Lines
Shed sites etc.



Dozer & Excavator Hire
Dozer with Rake

**Can provide Bobcat - Backhoe - Grader -
Side Tipper**

For larger jobs 54 tonne Dozer

Contact: Ray 0428 936 621

NEED PRACTICAL TRADE ASSISTANCE?

D & M Services

(Design and Manufacturing Services)

Solving a range of practical needs and problems..

Specialising in:

- ✓ Kitchen renovations
- ✓ Shop fitting and modifications
- ✓ Furniture restoration
- ✓ General carpentry
- ✓ Alterations & installations
- ✓ Metal based fabrication
- ✓ Motorhome and Caravan fitouts
- ✓ Pergolas, Decks & Gazebos
- ✓ Designing and planning

Guy Slingerland

0403602335



BEVERLEY MEDICAL PRACTICE



Providing excellent quality health care to the community of Beverley and the surrounding areas

Located at the corner of John and Forrest streets (diagonally opposite the Beverley Hospital)

"Cullen House"

106 Forrest Street, PO Box 434

Beverley WA 6304

Ph: 08 9646 1241 Fax: 08 9646 1049

Email: beverleymedical@westnet.com.au

OPENING HOURS

Monday to Friday

9am to 1pm & 2pm to 5pm

Saturdays 9am to 1pm by appointment only

(Closed Sundays and Public holidays)

General Practitioners

Dr. Remi Adebayo, Dr. Sam Farah, Dr. Olay Omoniyi,
Dr. Sola Oyetunji

Practice Nurses – *Lynley, Savneet and Wendy*

Monday to Friday 9am – 4pm

BP checks, woman's health, pap smears, spirometry, vaccinations, counselling, My Health,
Drivers and Health Assessments, wound care etc.

Your friendly practice team

Practice Manager – *Dawn*

Receptionist – *Kris, Mary & Emily*

Brookton Medical Practice now open Mon to Fri

Saddleback Medical Centre 27 Whittington Street, Brookton 6306

Ph: 08 9642 1485

Allied Health Services - Diabetes Educator, Dietician, Physio, Podiatry, Chiro etc.

Practice News!!

Due to the COVID19 pandemic you can now book an over the phone consult?

The Doctors and Staff would like to thank patients for their assistance during the ongoing COVID19 Pandemic, your patience when complying with Social distancing at appointments and placing yourselves in self- isolation has been extremely helpful in keeping medical staff and our community safe.

We are continuing to follow the WA Health Departments advice and ask that you all do the same, we know that the virus is spread through respiratory droplets produced when an infected person coughs, sneezes or talks, so continuing to practice social distancing, looking after our hygiene by washing our hands with soap and or using hand sanitisers regularly, attending to environmental cleaning and avoiding any non- essential contact with other people are things that we can do to protect ourselves and our community.

R U OK?

Our trained staff are always available if you or someone you know needs support or someone to talk too.

ruok.org.au.

The Beverley Medical Practice is committed to providing quality health services to Beverley and surrounding areas.

As part of our commitment to the community we support and assist up and coming medical health professionals. We have a number of student GP's attending clinics both onsite and virtually.

These Student GP's are from Notre Dame, UWA and Curtin University

If you are interested in assisting us by allowing one of our students to sit in on your consult or attend a virtual clinic over the phone please let our staff know.

Care outside normal opening hours - When the Beverley Medical Practice is closed you can always get medical attention by calling-Ready Care 1800 225 523 or Calling health direct 1800 222 222 or by attending the Beverley District Hospital, located in Sewell Street Beverley where experienced staff will triage the patient and contact the on-call Doctor

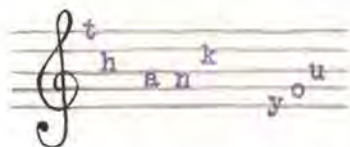
For all Emergencies call 000

The Beverley Medical Practice Bulk Bills patients with a current Medicare card

The Beverley Medical Practice is an AGPAL accredited practice and therefore is compliant with the RACGP 5th edition standards of General Practice

Beverley DHS P&C Music Quiz Night

The Beverley Town Hall was full to 'COVID' capacity on Saturday Night, 12 September, and the tunes were a plenty for the Beverley DHS P&C Music Quiz Night. We were incredibly lucky to secure appearances by International Stars who had returned from the dead but still completed their mandatory 14 day hotel quarantine, Elvis and Prince, to host the evening, ably assisted by 80's Pop band 'The Disappointments'. The winning 'band' on the night was 'Whip It'- Congratulations!



Thank you to everyone who came along and supported our Music Quiz Night. It has once again proven to be an extremely successful fundraiser, and all funds raised from the night directly benefit our students at BDHS by the provision of additional resources to further the educational opportunities available at our local school.

A night like this is not possible without a few special people, and so the P&C Committee would like to say a HUGE thankyou to:

- Our Hosts – Prince and Elvis (aka Brett Shaw and Damien Murray) who kept us entertained all night
- The Quiz Masters – 'The Disappointments' (aka Emma Davey, Sally Kilpatrick and Narelle Bailey) who put together the quiz questions for us all to enjoy
- The Bar Staff – Robbie Wansbrough, Daniel Bailey and Justin Mann
- The entire P&C Committee for their assistance with the organisation, decoration and clean up



Well Done to all of our Prize Winners on the night:

- Winning Table: 'Whip It'
- Photo Shoot Winner: Mark Petchell
- Raffle 1- Garden Pack: Siobhan Marshall
- Raffle 2- Men's Pack: Matt Davey
- Raffle 3- Money Tree: Debbie Eastwell
- Raffle 4- Produce Pack: Lowell Creedon
- Door Prize- Meat Tray: Paula Franklin
- Best Dressed: Dan Wilkinson
- Best Table: The Beach Boys



Photo on right: Zoe Wilkinson (Amy Winehouse) and Best Dressed Winner Dan Wilkinson (Axle Rose)

We would also like to thank our very generous sponsors who all made very generous contributions to the prizes raffle and auction items on the night:

- Gather York
- Beverley Tyre Service
- Wembley Golf Course
- IGA- Beverley
- National Trust
- Beverley Station Arts
- Table & Taste
- Beverley Massage Therapy
- Hollie Smith Photography
- U Beauty
- Marangaroo Golf Course
- Beverley Bakery
- Elders Beverley
- FMG
- Cummins
- Beverley Freemason's Hotel
- Mike Fairclough
- Beverley Post Office
- Barracks Farm Eggs
- Ingrid Bell
- Westdale Honey
- Avon Trading
- Beverley Electrical Services
- Barracks Farm Eggs
- Becky Halbert
- Wattle & Daub
- Gaye Vandenberg
- Cathie Nunn
- Adrian Lister
- Kristy Parker & Eric Ellis



Mia DAVIES MLA
Leader of The Nationals WA

CENTRAL WHEATBELT

Northam Office
171 Fitzgerald Street
(PO Box 92)
Northam WA 6401
Ph 08 9622 2871
Fax 08 9622 1668

Merredin Office
The Old Town Hall, Mitchell St
Merredin WA 6415
Ph 08 9041 1702
Fax 08 9041 2554
Freecall 1800 673 914

mia.davies@mp.wa.gov.au
www.miadavies.com.au
MiaDaviesMLA
facebook.com/MiaDaviesMLA

THE NATIONALS for Regional WA

Authorised by M.Davies, Northam Boulevard Shopping Centre, Fitzgerald Street, Northam.

Now Open



**BEVERLEY
PHYSIOTHERAPY**

**Kahlia Ferguson
Physiotherapist**

**Every Thursday in Beverley Chiropractor Centre
in the Cornerstone Building
(Entrance off Dawson Street)**

**Sports injuries, osteoarthritis, muscle strains,
neck pain, back pain, headaches,
post-op management**

Enquiries and Bookings:

Phone 0437 709 577

Book Online at www.beverleyphysio.com.au



Michael Dichiera
 Director
 PO Box 268, North Perth WA 6906
 0401 633 795
 michael@yourstyle.net.au
 yourstyle.net.au

BRIDGE

WHEN: Monday's
WHERE: CWA Hall

Countryside Memorials



- Cast Stone
- Granite
- Marble
- Plaques

Added Inscriptions
 All Repairs and Restorations

25 YEARS PROFESSIONAL EXPERIENCE
FREE DESIGN AND QUOTE

Servicing All W.A. Country Areas
9696 0466

OXTER SERVICES
www.oxter.com.au
oxter@westnet.com.au



BEVERLEY REDBACKS HOCKEY CLUB



2020 SEASON OVERVIEW

It goes without saying that 2020 has been a season like no other! It feels like a lifetime ago when the committee first met in February, with the impact of COVID19 making this year especially challenging. The Avon Hockey Association made the move to go ahead with a 9 week season beginning in mid July. We saw 19 people pull on the red and black this year.

The season was coached by Carly Veitch and Dani Whyte, and started off with a bang, with the Redbacks beating Wongan in their first game but alas that was our only taste of victory for the season. Our defence line - Bec, Marg, Lisa, Carly, Kathryn, Kelly, Britt and Penny were regularly under a fair bit of pressure but showed solid teamwork and strength with opposition teams having to work extremely hard to score. Our strengthened forward line consisted of Ali, Carissa, Geena, Bird, Mirika, Jen and Charlie while Chantelle and Dani played both forward and back. As the season went on our confidence and depth in attack went from strength to strength and the score line didn't entirely reflect our competitiveness. We certainly improved our fitness, talking on the field and as we gained more confidence in switching the ball, channelling the opposition and worked with each other to feed the ball to the forward, we certainly will be taking a lot of potential into the 2021 season.

The Hockey Club would like to pass on thanks to the Football Club for their organisation of the East v West Sports day. It was a fabulous community day, and really awesome to see hockey, netball and footy all being played in Beverley on the same day for the first time. Thankyou also for making the hockey field a third of its usual size on a hot day! We fielded two teams aided by the addition of a few additional players had a rather hilarious game umpired by Marg which ended up in a 4 all draw. The highlight was seeing a couple of the kids find themselves a playing shirt and joining



Our AGM and windup was held at the Beverley Freemasons Tavern on Sunday 20 September. Congratulations to the winners of the awards:

Fairest and Best,

sponsored by Avon Trading: Kelly Mann

Runner up Fairest and Best,

sponsored by Wade & Kathryn McLean: Mirika Winmar

Highest Goal Scorer,

sponsored by Di Smith: Mirika Winmar

Players Choice as voted by the playing group throughout the season: Kelly Mann

Most Improved: Jenifer Petchell

Congratulations to Kelly Mann on being awarded with a medallion to commemorate playing 100 games with the Redbacks Hockey Club in the 2020 season.

The 2021 Committee is:

President: Dani Whyte

Secretary: Britt Hadlow

Treasurer: Chantelle Meade

Junior Convenor: Kelly Mann

Committee: Carly Veitch, Penny Burns, Geena Batchelor and Bec Sims.

Lastly the 2020 committee would like to thank all the sponsors, supporters and players for our season. Country sport is such an integral part of living in a small community, maybe something that the value of isn't realised until you are faced with the reality of potentially having a season cancelled because of a pandemic. How lucky we are to be able to play this year. So thank you for coming to training, having a solid crack on game day and enjoying some banter while we are at it. See you all next year to do it all again!

- Dani Whyte, President

**Beverley Redbacks Hockey Club
Contact Details**

Secretary: Britt Hadlow

Mobile: 0447 811 267

Email: beverleyhockey@live.com.au

Facebook: Beverley Redbacks Hockey Club

Instagram: [beverley.redbacks.hockey.club](https://www.instagram.com/beverley.redbacks.hockey.club)



Anglican Parish of Beverley/Brookton Times for Services for: OCTOBER 2020

DAY	CHURCH LOCATION	TIME	SERVICE
Saturday 03 October	St. Mary's Beverley	7.00pm	Evening Service
Sunday 04 October	St. Mark's Brookton	8.30am	Prayer and Praise
Sunday 04 October	St. John in the Wilderness West Dale	9.00am	Morning Prayer
Sunday 04 October	St. Mary's Beverley	9.00am	Morning Prayer
Saturday 10 October	St. Mark's Brookton	7.00pm	Evening Service
Sunday 11 October	St. Mark's Brookton	8.30am	Holy Communion
Sunday 11 October	St. Mary's Beverley	10.30am	Holy Communion
Sunday 18 October	St. Mark's Brookton	8.30am	Prayer and Praise
Sunday 18 October	St. Mary's Beverley	9.00am	Morning Prayer
Sunday 25 October	St. Mark's Brookton	8.30pm	Prayer and Praise
Sunday 25 October	St. Mary's Beverley	9.00am	Morning Prayer
Sunday 01 November	St. Mark's Brookton	8.30am	Prayer and Praise
Sunday 01 November	St. Mary's Beverley	9.00am	Morning Prayer
Sunday 01 November	St. John in the Wilderness West Dale	9.00am	Morning Prayer

Telephone contacts: Beverley - 0484 849 159 or 0419 194 420

Brookton - 9642 1373 or 9642 2357

All mail including St. Mary's Society please address to PO Box 293, Beverley 6304

Go to our WEB SITE for more details www.beverleybrooktonanglicanparish.org

BEVERLEY REAL LIFE CHURCH



*Living life with
Christ*

*All Welcome
Every Sunday
10 am*

50 Hunt Road, Beverley



CATHOLIC CHURCH

Service in Beverley
8:00am every Sunday at
Beverley Sacred Heart Church
Lukin Street, Beverley



THE RELIGIOUS SOCIETY OF FRIENDS (QUAKERS)

Beverley Friends Meeting
Old Catholic School Rooms
Dempster Street

Meeting for Worship
SUNDAY
10:30am

For more information & enquiries

phone 9048 0575.

www.beverley.wa.gov.au

Wheatbelt Regional Holiday Program



LESSER HALL
136 VINCENT ST, BEVERLEY
FRIDAY 02 OCTOBER 2020

AMENITIES BUILDING
FRIDAY 09 OCTOBER 2020
9.30AM – 11.00AM

ALL CHILDREN AGED 8 TO 16 YEARS ARE WELCOME
FREE ACTIVITIES INCLUDE
TRADITIONAL INDIGENOUS GAMES, MESSAGE STICK ACTIVITY



**Institute of Indigenous
Wellbeing and Sport of WA**



Busy times for CWA York!

The CWA York Branch held its regular monthly committee meeting on Friday 11 September 2020. Once again, it was a well attended, productive and enjoyable gathering.

We continue to observe social distancing and are very mindful of practicing good hygiene, owing to the ongoing health risk posed by COVID-19. In fact, one of the ladies was given the responsibility of ensuring that everyone sanitised their hands upon entry.

We were absolutely delighted to welcome Shannon Reynolds who treated us to a flower arranging demonstration in the rear garden immediately after the meeting. Shannon, who trained as a nurse, started her own business – Wattle and Daub Floristry – last year. What a marvellous inspiration Shannon is for all the potential entrepreneurs in the Wheatbelt.



Shannon is pictured here in full flight! And on a similar theme, some of the ladies have been very industrious in cutting out and painting various types of wildflowers. Their wonderful efforts now adorn the fence at the front of our rooms at 154 Avon Terrace, York. Not an easy task, but well worth it as they look so bright and add a real sense of cheer; Marianne Nilsson, CWA Honorary Life Member, is pictured positively beaming on the extreme right in the photo.



Marion Bateman
CWA York Branch



**WALL CLADDING • RE-ROOFING
KITCHEN & BATHROOM RENOVATIONS
INTERNAL RENOVATIONS • EXTENSIONS
STYROBOARD XPS INSULATION**



JOHN VADALA IS THE DIRECTOR OF CLADDING WA AND HAS BEEN IN THE CONSTRUCTION INDUSTRY FOR 33 YEARS. SPECIALISING IN WALL CLADDING.

FOR YOUR TOTAL HOME IMPROVEMENTS YOU CAN RELY ON JOHN AND HIS TEAM OF QUALIFIED TRADESMEN.

9295 0079 | 0418 939 781

admin@claddingwa.com.au | www.claddingwa.com.au

Registered Builder BP101244 • Registered Company BC103194



*Servicing Beverley & Surrounding Areas
Local Owner Driver David Johnson
PH: 0428 995 950
Email : Gameoncontracting@gmail.com*

*For all your Transport needs:
Side-tippers, Endtippers, Float
Liquid Fertilizers, Drop Decks &
Semi water cart for roadworks.*

*For your Earthwork needs:
20 tonne Excavator, Grader &
Loader with Accredited Load Rite System*



Beverley ROSE SHOW 2020

Friday 23 October 12.30pm-3.30pm
Saturday 24 October 9.30am-1.30pm

SECTION 'A'

1. Rose Red
2. Rose Pink
3. Rose Yellow or Gold
4. Rose Cream or White
5. Rose Bi Colour
6. Rose Fancy Colour
7. Rose Peace
8. Rose Mauve
9. Rose Apricot
10. Rose Three Distinct Varieties
11. 3 Roses in Separate Bottles...One Colour
12. 3 Roses
One Variety | One Bud Showing Colour | 1 Half Open | One Full Blown
13. 6 Roses Any Variety In Separate Bottles
14. Bowl or Vase of Polyanthus or Floribunda Roses
15. Vase of Any Variety Roses
Not More Than 9 Blooms, Any Colour and Rose Foliage
16. Vase of Full Blown Roses

SECTION 'B'

17. Modern Arrangement with Roses Predominating
18. Arrangement of Roses for Mantelpiece, any Foliage
19. Arrangement of Rose or Roses in an Unusual Container

SECTION 'C'

CHILDREN'S SECTION

20. Vase Arrangement of Roses any Foliage
(SCHOOL AGED CHILDREN ONLY)
21. Floating Bowl of Roses
22. Sand Saucer of Roses

BEVERLEY TOWN HALL

Show entry \$2

Trophy presentations on Friday at 3.00pm

Devonshire Teas available Friday & Saturday

TROPHIES

Champion Bowl or Vase

Best Single Rose in Section 'A'

Best New Exhibitor

Champion in Section 'B'

Prize for Children's Section

Most Outstanding Exhibit

EXHIBITOR RULES

- All entries are \$1 each,
- All entries must be ready for judging by 10.30am on the morning of the show,
- All entries must be grown by exhibitor, except in Section "B".

PROUDLY SUPPORTED BY

Beverley Supermarket and Liquor - local IGA Beverley

Post News and Gifts

E. Squire Contracting

Avon Trading

Beverley Pharmacy

Beverley CRC

Beverley Tree and Garden Club

Gaenor Carter

Brain & Geraldine Faithful

The Johnson Family

Trevor & Amanda McLean

This event is proudly hosted by the Beverley Tree & Garden Club and Beverley CRC

Make the most from your fertilizer investment



As your local Area Manager, Brett Coxon is keen to assist you with all of your fertilizer decisions this season.

So whether it's soil testing, nutritional advice, fuel gauges, or simply an on-farm appointment to discuss your requirements, give Brett a call today.

Mobile: 0427 766 506 Email: bcoxon@summitfertz.com.au



York Estate Agents (Beverley Division)

Good, Bad or Ugly We Sell!

Free Appraisals

"Properties WANTED we have qualified buyers waiting now"

Estate Experts

Professional and Trustworthy

Residential - Helen Stubing 0407 964 611

Rural - Mike Bawden 0403 268 158

Rentals - Jenette Callaghan 0418 929 011

Office - 9641 1335 Fax - 9641 1334



BEVERLEY LANDFILL SITE

OPENING HOURS

Saturday
8.00am – 4.00pm

Sunday
8.00am – 4.00pm

Monday
8.00am – 3.30pm

CLOSED
Christmas Day and
Total Harvest
Ban Days

PLEASE NOTE:
MONDAY'S EARLIER
CLOSING TIME

THE BEVERLEY BOWLING AND CROQUET CLUB



Men's 4's Sponsored by Beverley Gas & Plumbing

This was held on Friday 21 August in near perfect conditions (had the odd spot of rain and cold wind) with 50 participants making up 14 teams of 4 players.

The overall winning team was B Jones, D Murray, B Minchin and G Allan. The day was thoroughly enjoyed by all, both on and off the court.

Many thanks to Beverley Gas & Plumbing for sponsoring this event.

Men's Triples Sponsored by WestCoast Wool & Livestock

This was held on Friday 11 September in perfect spring conditions with 40 participants making up 12 triples teams and 2 teams of 2.

The overall winning team on the day was S Minchin & I Hunter with runners-up R Behn, C Lawlor and J Adams. Winners of the morning round were B Minchin, G Allen and S Murray and afternoon round G Rayner, M McLean and D Noonan were successful.

The day was thoroughly enjoyed by all, both on and off the court. Many thanks to Westcoast Wool & Livestock for sponsoring this event.

The Beverley Bowling Club will be opening their season on Sunday 04 October, names in by 1.15pm for a 1.30pm start and members please bring a plate of afternoon tea. Anyone wishing to join the Bowling Club either as a bowler or a social member please come along you are most welcome.

Men's Pennants – commences on 10 October – names to be on the board no later than 04 October to enable teams to be drawn up.

Make sure you're seen on the green!

Beverley Netball Club

Congratulations to everyone who participated in our Fast5 Competition.

Well done to everyone for getting out and having a go, think I heard someone say it had been 20yrs since they last played sport.

Results are:

Friday 04 September 2020

Men's

Blue 23 defeated Orange 3

Women's

Brookton Green 23 defeated

Beverley purple 22

7:30pm

Beverley green 26 defeated

Beverley purple 10.

Friday 18 September 2020

Ladies

Beverley Purple (50) defeated

Brookton Blue (25)

Men's

Green (24) defeated Orange (5)

Raffle winners were:

Valda Morton

Karen Pepper

Pam Bradley.

Thank you everyone for supporting our club in this interesting season. Hope you see you next year in an easier season.

OUR GROUP OF CARERS WORK WITH ANY WILDLIFE FOUND ON ROADSIDES

WILDLIFE EMERGENCY RESPONSE WA

We are a network of carers in Western Australia specialising in the rehabilitation of injured and orphaned wildlife.

Our team contacts
PHYLLIS FACEY 0437 483 175
LYNN POWELL 0417 959 913
SONIA COOKE 0423 806 757

On Saturday 05 September the Junior Netball and Junior Football season ended.



Congratulations to award winners:

2020 Junior Football

Year 5 & under Coaches Award

Jacob Petchell

Year 5 & under Coaches Award

Wyatt Tamblyn

Year 7 & under Coaches Award

Tempest Wojtkiewicz

Year 7 & under Fairest and Best

Patrick Farr & Aden Hodder

2020 Junior Netball

Overall Fairest & Best Glenys Petchell trophy

Sapphire Bailey

Year 7 & under Coaches Award

Mia Shilling

Year 5 & under Fairest & Best

Grace Hodder

Year 5 & under Coaches Award

Mahli Kitai

Thank you to our coordinators, coaches and volunteers that assisted this season.

Brett Shaw (football coordinator), Jacinta Murray (netball coordinator), Ben Murray and Paul Higgins (Junior Football coaches), Cara Hammond and Jaimie Williamson (junior netball coaches).

Brad Copping and Mark Bickley (Auskick Coaches) and Narelle Bailey and Carissa Shaw (NetSetGo coaches).

Welcome to the 2020/2021 Junior Sport Committee.

President: Mark Bickley

Secretary: Jo Copping

Treasurer: Roger Tonkin

Football Coordinator: Brett Shaw

Netball Coordinator: Sharlee Higgins

Cricket Coordinator: Brad Copping

Hockey Coordinator: Kelly Mann

Thank you to outgoing members: Shane Wheat, Bec Halbert, Jacinta Murray. Well done to all in this very trying year. Let's hope the new season is easier.



Above: Wyatt Tamblyn, Paul Higgins and Jacob Petchell



Above: Mahli Kitai, Jaimie Williamson, Mia Schilling, Sapphire Bailey, Cara Hammond and Grace Hodder



Above: Glenys Petchell with Sapphire Bailey



Left: Tempest, Coach Ben Murray, Patrick Farr and Aden Hodder

Right: NetSetGo kids with Coaches Narelle Bailey & Carissa Shaw



ANIMAL HEALTH, CHEMICALS, FENCING, FERTILISER, PET FOOD, SEED, STOCK FEED, WATER EQUIPMENT



LOT 502 DE LISLE STREET, BEVERLEY

TRADING HOURS MON-FRI 8AM-5PM

CHLOE FLEAY 0400 921 520

BARRY FRASER 0427 940 827



Locals Supporting Locals

Patchwork Quilt Fundraiser

We have been donated 2 Patchwork Quilts on display at the Beverley Visitor Centre and tickets are \$2 each or 6 for \$10. All proceeds from raffle go to the Beverley Junior Sports Group.

Dawson's Concrete & Reinforcing

“Your Local Beverley Concreter”

- Concrete Formwork & Steel Fixing
- Driveways, Shed floors, Maintenance pits, Silo pads, Super sheds, House pads
- Fully mobile service
- Over 30 Years Experience
- 7 Days A Week
- Professional, Reliable Service

Phone for a Free Quote

SANDY DAWSON

Mobile: 0417 375 221

Email: pameladawson@bigpond.com

FB: www.facebook.com/dawsonconcrete



Club Championships

The Match Play play-offs to determine this year's Club Champion were held on Saturday 05 September. Results were:

Play-Offs

Championship

Darrell Hagan def. Terry Woods (8 & 6)
Luke Gollan def. Alan Scales (Walkover)

Marc Edwards def. Alan Hammond (5 & 3)
Dale Wansbrough def. Robbie Wansbrough (1 Up)

Semi-Finals

Darrell Hagan def. Luke Gollan (4 & 3)

Dale Wansbrough def. Marc Edwards (1 Up)

First Division

Chris Pepper def. Eddie Willis (1 Up)
Mark Kont def. Paul Burns (6 & 5)

Mark Kont def. Chris Pepper (4 & 3)

Chris Lawlor def. Ken Bradley (1 Up)
Mel Vivian def. Mike Carthew (1 Up)

Mel Vivian def. Chris Lawlor (1 Up)

Our congratulations go to all winners and good luck to the finalists who will be playing-off on Saturday 26 September, the results will be advised in next months Blarney.

Open Teams Weekend

The **Beverley Tyre Service** Ambrose-in-Threes event was held in perfect conditions on Friday 18 September. Fifty nine players competed; including visitors from Waroona, Pinjarra, Mandurah, Gosnells, Yokine, Chequers, Hillview, Mundaring, York, Northam and Calingiri. Results were:

Nett Winners

1st - Beverley Transport (Brutus plus ringers) Nett 56 1/6 (Gross 65)
2nd - Kevin Smith, Michael Speciale, Peter Bray (all Northam) - 57 (67)
3rd - Gordy Riggir (Chequers), Kevin Burton, John Mason (both Waroona) - 57 1/3 (66)

Gross Winners

1st - A. Thomas, M McKay, J. Scott (all Waroona) - Gross 63
2nd - Bee-stings (all Calingiri) - 65
3rd - Stephen Gollan, Darrell Hagan, Tom Chalker (High Wycombe) - 65

The Club also sends a big thank you to 'H' from Beverley Tyre Service, not only for his sponsorship of the day, but for also volunteering to drive the hospitality cart throughout the day, a gesture that was much appreciated by the players.

BEVERLEY STORAGE & TOWING

HUGE NEW PREMISES LOCKED & FENCED

\$100 A MONTH CARS, CARAVANS, BOATS, MOTORHOMES WE HAVE ALL OF YOUR STORAGE NEEDS COVERED.

TILT TRAY WITH WINCH CAR TRAILER
PICK UP AND DELIVERY - ALL AREAS

BRETT HIGGINS
0400 048 976
beverleystorage@hotmail.com
www.facebook.com/BeverleyStorage



NORTHAM HYUNDAI

SALES ★ SERVICE ★ PARTS

9622 5588

www.northamhyundai.com.au

37 Fitzgerald Street, Northam



Forty one players competed over Saturday and Sunday in the annual Open Teams event. Despite two days of stroke play in extremely unkind weather, some notable scores were handed in. The results were (all players from Beverley unless otherwise noted):

- Gross Winning Team - Stephen Gollan, Kevin Burton (Waroona) Russell Walker (Mandurah) (511)
- Gross Runners-Up - Marc Edwards, Todd Waddell, Ron Milligan (Mandurah) (542) on count-back
- Gross Third Place - Wayde McLean, Bruce Kilpatrick, Darrell Hagan (542)
- Nett Winning Team - Ali Lewis, Sera Minchin, Marg Gollan (Pinjarra) (457)
- Nett Runners-Up - Daniel Gollan, Luke Gollan, Liam Gollan (458)
- Nett Third Place - Garry Miller, Dave Brunini (Yokine), Brendan Edwards (Yokine) (461)
- Best Mens Gross - Kevin Burton (156)
- Gross Runner-Up Men- Marc Edwards (158) on count-back from D. Hagan
- Best Ladies Gross - Andi Riggir (Gosnells) (180)
- Gross Runner-Up Ladies - Janet Cowan (Gosnells) (186)
- Mens Nett Winner - Stephen Gollan (145)
- Mens Nett Runner-Up - Garry Miller (147) on count-back from D. Gollan
- Ladies Nett Winner - Ali Lewis (143)
- Ladies Nett Runner-Up - Glenys Collins (153)
- Saturday Gross Winner - Tom Chalker (High Wycombe) (77)
- Saturday Nett Winner - Greg Scott (Chequers) (72) on count-back from Luke Gollan
- Sunday Gross Winner - Darrell Hagan (79)
- Sunday Nett Winner - Liam Gollan (67)
- Best Veteran - Alan Hammond (183)
- Best Super-Vet - Phil Becker (Northam) (164)

We are extremely grateful to the following sponsors without whom this event would not be possible:

- Beverley Transport - Beverley Tyre Service - Beverley Electrical Services - Twinkarri -**
- Furrow Management Systems - Summit Fertilisers - Hannaford Seeds - Avon Waste -**
- Dirt 'n Boondies - Purslowe Tinetti Funerals - Turn-It-Up Electrical - Terry and Sandy Woods -**
- Matt McLean and Joey Walters - Wayne Smith - Mia Davies - Marc Edwards - Christine Hagan.**

A big thank you, also, goes to all those members who assisted with the many tasks that were required to make the weekend a success. From course preparation and maintenance to kitchen and bar staff to special tasks required on the day, there were many members who donated valuable time. The Club also specially thanks Stephen Gollan who cheerfully undertakes the daunting task of approaching sponsors and organising trophies.

PURSLOWE TINETTI
FUNERALS .com

Cremations & Burials
Country or City
Pre-paid Funerals

Arranged in your home or
264 Fitzgerald St Northam



Call the Tinetti Family
9622 1411



AUSTRALIAN
FUNERAL
DIRECTORS
ASSOCIATION

VALLEY FORD

• **NEW & USED VEHICLES** •

• **SERVICE & PARTS** •

9622 5588

www.valleyfordnortham.com.au

Cnr Peel Tce & Fitzgerald St, Northam



Other Results

On August, 29 and 30 sixteen players travelled to York to compete in their Open Day events. Congratulations to Damien Murray and Matt McLean who won the 4 Ball Better Ball Stableford event with a creditable score of 48 points. Marc Edwards and Darrell Hagan unluckily lost the 4BBB gross event in a count-back. Dale Wansbrough (48 points) was the most successful of the Beverley players in the Craig Cup but was short of getting a place. All members enjoyed the weekend; just ask James Adams!

On the same weekend, 3 players competed in a social day at home. Terry Winfield won the day with 36 Stableford points.

On Saturday 05 September, eight players competed in a social afternoon of golf while the Championship rounds were being completed. Robbie Wansbrough took the honours with 39 Stableford points.

Beverley Gas and Plumbing sponsored an Ambrose-in-threes event on Saturday 12 September. Thirty nine players in 13 teams vied for the trophies. Winners on the day were Robbie Wansbrough, Blake Wansbrough and Kodie Fleay with Nett 56^{2/3} (Gross 67). Runners-up were Steve Johnston, Martin Mosely and Eddie Willis with 59 1/2 (67). Kodie generously re-donated his meat voucher trophy which was raffled and raised another \$100 for the club. Thanks very much Kodie for sponsoring the day.

On Saturday 26 September the Belhus Trophy Stableford 4 BBB event was held in conjunction with the Championship finals. Results will be advised next month.

The final fixtured club event for the year will be a Flag Tournament to be held on 03 October.

For anyone interested, social play will continue through summer while the course and weather hold up.

Wednesday Scroungers

This 6 hole Stableford event continues every Wednesday and Friday. This format is an excellent introduction to golf as the game is very relaxed with an emphasis on the social aspect of golf. Games will continue through summer as long as players wish to continue and anyone interested in attending is welcome to join us. We generally assemble at around 3.00pm for a 3:30pm tee-off.

Results for September were:

August 26 - 17 players – won by Paul Burns, Darrell Hagan and Eddie Willis – 14 points each

September 02 – 10 players – won by Paul Burns and Mel Vivian – 15 points each

September 04 – 6 players – won by Mike Carthew – 13 points

September 09 - 18 players – won by Matt McLean – 16 points each

September 16 – 16 players – won by Fred Bremner – 18 points

New Players Welcome

New and prospective members or visitors are always welcome to join us for a round. Tee-Off is generally at Noon on Saturdays (arrive around 11:30am). For any further information please call Men's Captain Mark Kont on 0490 037 810.

WANTED



BLOWNOUT SHEARERS
Contact: Jack Dugan Phone: 0450609281
Email: surebetss@hotmail.com

Shearing services provided, cost plus rate or cocky shearing, full crew up to five stand available, clean, tidy, professional 25 years industry experience.

**BEVERLEY
DEZIGN**

Renovations,
Alterations, BBQ's,
Brick Fences, Steps,
Retaining Walls,
Brick paving laid in mortar

Phone
Michael 0407 645 001
Barry 0417 181 724



BEVERLEY STATION ARTS PRESENTS

Wolfgang's

Magical Musical Circus

BY CIRCA



- THE LIST, UK

**"MANIC
AND MAGICAL"**

- THE GUARDIAN, UK

**"A MUST-SEE
SHOW FOR ALL
THE FAMILY"**

- EDINBURGH LIFE WITH KIDS, UK

CREATED BY YARON LIFSCHITZ WITH BENJAMIN KNAPTON AND THE CIRCA ENSEMBLE

**Beverley Platform Theatre
Tuesday 06 October 2020**

5.30pm start - 60 minute duration

\$25 Adults, Concession & Children (3-5 years) \$20

Tickets: Beverley CRC or Online: trybooking.com/BLDHE

CIRCA





Smartphones – Friend or Foe?

A recent article by the Australian Psychological Society identified that Australians are the fourth biggest smartphone users in the world. Aussies spend an average of 2.5 hours per day on their phone; this equates to 38 days per year. These figures are not surprising when you think about it. Consider last time you were on the bus or at the pub, how many people had their eyes glued to their screens? How is all this time in front of a screen impacting our health and wellbeing?

Using smartphone social media apps (Facebook, Snapchat, Twitter, Instagram etc.) to keep in touch with friends or family and stay updated on community events is a beneficial and convenient way to stay connected. This is especially true for blokes in remote areas where face to face contact with our mates is not always possible. Smartphones have also made other aspects of our lives easier; we can now look at tomorrow's weather or check the footy score with the touch of a screen. There are also many health apps that some people find beneficial to their mental health and overall wellbeing.

There is research, however, that suggests compulsive use of our devices can negatively affect our health. Researchers have even started using the term 'smartphone addiction' for people who have an inability to regulate their use. The addictive nature of smartphones is likely due to the instant gratification we get from every text message we receive or like we get on our Facebook posts. Overuse and dependency on smartphones can sometimes have negative impacts on our wellbeing by:

- Increasing loneliness and depression;
- Fueling anxiety;
- Increasing stress levels;
- Disturbing our sleep.

Another thing to consider when replacing face to face communication with online communication is what makes the biggest impression in how we communicate? The research tells us our body language (visual) is 55%, how we speak (voice/tone) is 38% and the words (verbal) are only 7%. So, if we are trying to communicate with a mate via social media how much meaning is getting lost in translation? It is also very easy for guys to 'filter' their online presence to make the appearance of a 'perfect' life. This can make it difficult for our support groups to identify when we are going through a rough patch. If our smartphone use is causing us to lose interest in the things we usually enjoy, or we are using them as a replacement to physical relationships it might be time to consider a 'digital detox'. This doesn't mean cutting use out completely, rather just cutting back. Helpful ways we can achieve this include:

- **Replacing use** with more fulfilling activities. This could be by interacting with our kids, partner or mates more. I know I would feel better doing this than just refreshing my newsfeeds for hours on end;
- **Removing the temptation.** This method had great results in combating other addictions (like alcoholism or gambling). We can charge our phones in the lounge at night, so we don't check it during the night or leave the phone in the smoko room at work, rather than in our pocket.

Let's control the way we use technology, not let it control us!

Working with Warriors® Podcast Series. The podcast was launched on the 19 June 2020 and is based on conversations around men's wellbeing and health from our "Working with Warriors®" education sessions. The short podcasts regarding a man's approach to his wellbeing and health are now available to listen via our website or on Spotify, Apple Podcasts, Google Podcasts, and numerous other podcast directories.

Tom and the Team

The Regional Men's Health Initiative
delivered by Wheatbelt Men's Health (Inc.)

PO Box 768, Northam WA 6401

Phone: 08 9690 2277

Email: menshealth@4blokes.com.au

www.regionalmenshealth.com.au



Look out for travel bugs as you wander out yonder!

Travellers heading out into Western Australia's wild blue yonder this spring are being asked to join WA's biosecurity efforts by taking precautions to prevent the spread of pests, weeds and disease.

Unwanted weed seeds, disease spores and pests are expert hitchhikers, unknowingly hiding in or on clothes, camping gear and cars.

With the surge of travel within WA because of the state border closure, there is an increased risk of pests being spread from one part of the state to another.

Hitchhiking pests of high biosecurity concern to WA in 2020 include the Russian wheat aphid, European wasps, cane toads, and any weeds with prickly 'burrs'.

DID YOU KNOW?

You would know about having to surrender fresh fruit and vegetables at the WA border, but did you know there are restrictions on taking **fruit and vegetables into the Ord River Irrigation Area near Kununurra**? This is to prevent the introduction of Mediterranean fruit fly to the area.

Did you know there are restrictions on the movement of **honey and bee products out of the Kimberley region**, to prevent the spread of small hive beetle to the rest of the state?

By following our travelling tips, we can also thwart those opportunistic pests that **are not** established in WA, but which occasionally breach state borders on clothing and vehicles, and in fresh fruit and vegetables.

Priority hitchhiking pests not in WA, but which we still need to keep an eye out for, include red imported fire ant, Queensland fruit fly, and the plant disease myrtle rust (which is spread by spores). Also watch out for birds such as starlings and sparrows.

You can find our more from our website agric.wa.gov.au or call our Department.



DON'T TAKE PESTS ON HOLIDAY! Essential tips

- Be mindful of taking fresh fruit and vegetables with you if travelling north. **Buy as you go!**
- Use amnesty bins or dispose of food waste in plastic bags before placing in bins.
- Brush down luggage and contents, shoes, clothing, tents, sleeping bags and other items before moving to your next location.
- Check your socks, shoes and clothing for burrs and seeds – check your tires too!
- Shake out car mats before moving on.
- Clean and dry all boating and fishing gear before fishing another waterway where possible.
- Keep your dogs on a leash at all times.
- Always check your pet's fur and paws for bugs, seeds and burrs before entering your vehicle.
- Do not enter farm properties without asking.

Report suspect pests



MyPestGuide™ Reporter
via app or online
mypestguide.agric.wa.gov.au



Pest and Disease Information Service
(08) 9368 3080
padis@dpird.wa.gov.au



BEVERLEY CRICKET CLUB



The Beverley Inkosi Design Redbacks once again are fielding a side in the Avon Cricket Association for the 2020/21 Season and are looking to go one better and win the Premiership after being Runner Up last season.

The side will have a number of young cricketers mixed with a few old boys and are looking forward to a successful and enjoyable season.

If you are interested in playing cricket this season Beverley has training on Thursday nights at the Recreation Ground commencing at 5.30pm or you can contact either James Adams 0429 461 000 or Stephen Gollan on 0429 461 200.

Games are played on Sunday's during November and December commencing at 12.30pm and during February they revert back to Saturday games.

To date the draft fixtures for October are as follows:

Saturday 17 October	York vs Beverley	York
Saturday 24 October	Bye (AFL Grand Final)	
Saturday 31 October	Brookton vs Beverley	Brookton

Storytime Guest Reader

SHIRE OF BEVERLEY CEO STEPHEN GOLLAN IN HIS OVER 50'S WORLD CUP AUSTRALIAN TEAM UNIFORM



SHAZMAC PLUMBING

PROUD TO BE YOUR LOCAL PLUMBER

Plumbing Licence: PL 5829 Gas Fitter Licence: GF 7422 RHL: L100443
ABN: 18 531 685 326

For all your plumbing & gas fitting needs

Phone 0408 189 987

PO BOX 116

BEVERLEY WA 6304

shazmac1@westnet.com.au



NO job is too big or too small.



HAVE A BLAST. BE PART OF THE CREW!

Get into Woolworths Cricket Blast. It's a fun and active program for kids of all abilities – whether it's your first time with a bat or you're a backyard cricket star!

- ✓ It's easy to join a crew and make awesome new friends.
- ✓ Wear the colours of your Big Bash heroes.
- ✓ Parents warm up, you can join in too!
- ✓ Outdoors, non-contact.



JUNIOR BLASTERS

AGES 5-7 | 60 MINS | 6+ WEEKS

Learn new skills, including catching, throwing and teamwork, through fun game based activities.

Sign up now for your Starter Pack. Returning Junior Blasters score a Returner Pack with a Backpack, Ball and choice of bonus item!



STARTER KIT



RETURNER KIT



MASTER BLASTERS

AGES 7-10 | 90 MINS | 6+ WEEKS

Everyone gets a chance to bat, bowl and field in short, modified games of cricket. For kids with basic cricket skills.

Sign up now for your Master Blasters Pack!



Beverley Junior Sporting Council
Starts Saturday 24th October 2020

Junior Blasters 8:30am

Master Blasters 9:15am

Jo Copping 0438972335 beverleyjnrspport@gmail.com



JOIN A CREW NEAR YOU TODAY

PLAY CRICKET

OFFICIAL KIDS PROGRAM





BEVERLEY OFFROAD MOTORSPORTS ASSOC.

Beverley Offroad Motorsports Association (BORMSA) is a club focused on entry level gravel motorsport in a social atmosphere. Throughout the year the club holds junior motorkhana, khanacross and autocross competitions plus driver development days.



Upcoming events
Saturday 17 October 2020
Khanacross

Sunday 18 October 2020
Driver Development Day &
Busy Bee

Location: End of Nicholas St.
(Reserve 5265 Nicholas Street).
Just passed the refuse site.

For more information go to our
Facebook page or website
www.bormsa.com



Western Diagnostic PATHOLOGY

Located behind the Beverley Medical Practice Cullen House 106 Forrest Street Beverley.

Open Mon, Wed & Fri 8 am – 1pm

All enquiries to Phlebotomist - Sue Ph: 9646 0724

Please note that Western Diagnostic Pathology will accept all pathology collection forms.



Creating personal invitations for all of life's memorable occasions.

From Birthday Parties, Weddings, Engagement Celebrations,

Hen's Night, Baby Showers, Anniversaries.

Also include Growth charts, Envelopes, Logos,

Business cards, Advertisement designs and much more!

Please contact Tegan with your request.

Email: Admin@theiacontracting.com

Phone: 0427716317

ROYAL ANTEDILUVIAN ORDER OF BUFFALOES



GLE (Inc)
QUAIRADING BEVERLEY NO.163

We meet the first Wednesday of
every month at the Masonic Lodge,
Hunt Road, Beverley

*The objects of our order are
Philanthropy and Good Fellowship.*

For more info contact

Tom 0419 945 240

C & B TRANSPORT

DELIVERING GENERAL FREIGHT AND CHILLER GOODS

3 DAYS PER WEEK OR AS REQUIRED

TO

BEVERLEY, BROOKTON, PINGELLY

FROM

PERTH DEPOT CANNINGVALE MARKETS

PLEASE CONTACT PAUL BALDWIN

ON

0417 953 968 or 08 9646 0461

BIG ENOUGH TO DO THE JOB SMALL ENOUGH TO CARE

CHOIR MUSTER

SATURDAY 31 OCTOBER 2020
Beverley Platform Theatre

Voice Moves Choir Muster in Beverley for a Big Sing & Concert!

Date: SATURDAY 31 OCTOBER 2020

Time: 2.00pm – 5.00pm (Gates open at 1.30pm)

Venue: Platform Theatre, 120 Vincent Street, Beverley

Tickets: \$10 per person available at the gate on the day, children half price

Traditional country afternoon tea (included with ticket) is served during this wonderful afternoon of entertainment from these 6 choirs.

Plus group singing lead by Tim Fisher, Harry Oliff and Kelly Newton-Wordsworth.

As the venue is outdoors, please dress for the weather – hats and sunglasses if warm; rug up if cold; in the event of inclement weather, the concert will be relocated to the Beverley Town Hall. Enquiries to Jenny 0419 040 063



STRIKE A CHORD

Auditioned ensemble of 15 ladies, always a crowd pleaser



BEVERLEY STATION SINGERS

Small group specialising in well known and loved songs



SUMMER HOUSE

Music Style: A Cappella, World Music



A CAPPELLA GO

A mixed group of 30 singing mostly popular and jazz classics



THE RED PEONIES

National Serbian Choir



ROSSMOYNE COMMUNITY SINGERS

Classic pop hits, jazz and musical theatre

AvonValleys
WINDSCREENS
"We Come to You"
0429 001 393
www.avwindscreens.com

VALLEY AIR
CONDITIONING
& **REFRIGERATION**
0408 755 466

Supply and Installation of all types of air-conditioning and refrigeration systems. Split, Ducted, Evaporative, service and repair to domestic, industrial and commercial. Throughout the Avon Valley and Wheatbelt, no job too far, call Mark for a free quote
Email valleyaircon@outlook.com ARC Lic AU42118



The tennis season is nearly upon us and we look forward to welcoming new and returning members back to the club.

There have been a couple of changes to the Committee and we congratulate Chad Vandenberg for accepting the President position and thank Rebecca Smith for taking on Secretary. Graeme and Chantelle are still on the committee as Vice President and Ladies Captain respectively. Also new to the committee are Drew Kop, Men's Vice Captain and Alex Kop, Ladies Vice Captain. All other positions remained. Thank you to outgoing committee member Blake O'Meagher.

The season will open on Sunday 11 October. Once again, the club are hosting the Beverley Heroic CycloX on Saturday 17 October and our first tournament will be the Chris Boladeras Memorial Trophy – Hcp Mixed Doubles on Sunday 18 October. Junior coaching and the Ladies Mid-Week Competition will commence the first week back at school.

Please keep an eye on your email for all the 2020/21 season details which will feature the President's Letter, Season Fixtures and Membership Forms. To join the club mailing list please email secretary@beverleytennisclub.com

See you on the courts!



First Tournament


SUNDAY 18 OCTOBER 2020
CHRIS BOLADERAS MEMORIAL TROPHY

PROUDLY PRESENTED BY RICHARD
BOLADERAS + BEVERLEY GAS &
PLUMBING

BEVERLEY BADMINTON



Every Wednesday Morning at 9am
COVID Restrictions are to be adhered to
Social and Competition Games Only

 **Beverley Shire Hall**

Please wear closed in shoes. Rackets are provided

For More Information or Enquiries



Find us on Facebook



Or Email: beverleybaddy@outlook.com



northam optical



- Bulk billing to Medicare
- HBF & DVA Provider
- Competitive prices
- Great range of frames & sunglasses
- Locally owned and operated

www.northamoptical.com.au

138 Fitzgerald St Northam WA P 9621 1131
E northam.optical@yahoo.com.au

BEVERLEY

TOY

LIBRARY

Beverley Toy Library is run once a month after Storytime. Borrowing is available via membership.

If you are interested in Toy Library please come down to the Beverley Library, located at the Cornerstone on Tuesday 13 October 2020.

For more information contact Kelly 0428 779 234.



BEVERLEY EARLY YEARS GROUP PRESENTS

Storytime

2020 DATES

- 18th February
- 17th March
- 28th April
- WEDNESDAY 27th May*
- 23rd June
- 21st July
- 18th August
- 15th September
- 13th October
- 10th November
- 8th December

* National Simultaneous Storytime at Beverley DHS

FREE!

ONCE A MONTH ON TUESDAYS @ 9-30

VENUE: TOWN LIBRARY @ CORNERSTONE



FEATURING:
STORIES, SONGS, FUN!
AN INTERACTIVE 30 MINUTE SESSION FOR BEVERLEY KIDS

All Welcome!

For more information, contact Kelly on 0428 779 234



Well, today (Tuesday 22 September) was our closing day of golf and I would like to thank the past players for joining us for our presentation. We enjoy having you at our club.

Our season was a short season due to the epidemic, so we really only had 11 weeks of competition. It has been a challenging year trying to fit in state events, but we did it. 2020 attracted a lot of younger players and it has been great to watch these players improve their golf over the season. New players this year were Skye Carlhausen, Jacinta Murray, Carissa Shaw, Hollie Smith, Chantelle Meade, Valda Morton and we welcomed back Ali Lewis after a few years of absence.

I must acknowledge **Jane Murray's** year of special golf. She started the year with a **18 handicap** and finished the season with a **13 handicap** and she won many trophies.

We had a nine hole competition this year which we haven't had for years. Anne Szczecinski, Gerry Anderson, Valda Morton, Chantelle Meade and Heather McLean all played 9 holes. It is great to see the 9 hole competition back again.

I would like to thank my Vice Captain, Lyn Mactaggart for being my offsider. Your help is very much appreciated.

Competition Results

Date	Competition	Results	Pinnies
Tuesday 25 August	Bette Bremner Trophy MONTHLY MEDAL Thanks to Bette for donating this trophy.	Par Winner: Sera Minchin +2 Runner Up: Maxine Watts-square	No 4: Nearest to Line (actually on the line) Yvonne Hobbs No 6: Long Putt- Glenys Collins No 13: Nearest to Pin-Lyn Mactaggart.
Tuesday 01 September	Ali Lewis Trophy Thanks to Ali for donating this trophy.	Stableford Winner: Sera Minchin 34pts Runner up: Maxine Watts 33pts	Pinnies were won on this day by Yvonne Hobbs, Marg Peck and Maxine Watts won 2 pinnies
Tuesday 08 September	Lorna Barrett-Lennard Trophy Thanks to Lorna for donating this trophy.	Stableford Winner: Ali Lewis 43pts Runner Up: Jacinta Murray 40pts	No 3: Longest Drive 30+Hcp Jacinta Murray NO 8: Nearest to Pin Glenys Collins No 10: Long Drive 0-29 Hcp Maxine Watts No 13: Nearest to Pin Yvonne Hobbs
Tuesday 15 September	Jo Sims Non Winner Trophy MONTHLY MEDAL PLAY OFF Thanks to Jo Sims for donating this trophy.	Stableford Winner: Maxine Watts 38pts Runner Up: Ali Lewis 34pts Play Off: Jane Murray, Marg Peck and Sera Minchin played and Marg Peck won with a score of 36pts.	No 5: Nearest to Pin Maxine Watts No 14: Long Putt Ali Lewis

Other Events held in conjunction with our golf days

Competition	Winner
Silver Spoon	Jane Murray
International Bowl: Silver (Hcp- 21.4 and Bronze (Hcp 21.5-44.5)	Jane Murray Marg Peck

Monthly Medal	Marg Peck
Putting Competition Donated by Jane Murray	Jane Murray 81 putts
Ferret Competition Donated by Sera Minchin	Yvonne Hobbs 5 ferrets, countback from Jane Murray
Long Drive Competition Donated by Marg Peck	Yvonne Hobbs
Eclectics: (18 Holes) Half Handicap Full Handicap	Jane Murray 58 Nett Jacinta Murray 45 Nett
Eclectics: (9 Holes) Donated by Anne Szczecinski	Chantelle Meade 26 Nett

Until season 2021, BE VERY STRAIGHT

Sera Minchin
Ladies Captain

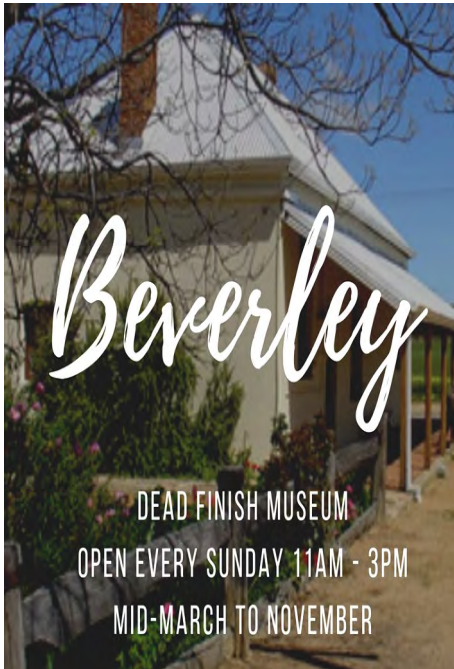




COUNTRY LINE DANCING

Thursday mornings at
the Town Hall

Enquiries to
Jan 0429 952 177



DEAD FINISH MUSEUM
OPEN EVERY SUNDAY 11AM - 3PM
MID-MARCH TO NOVEMBER

BILL CHAMBERS Chartered Accountant & Registered Tax Agent

Tax return preparation

Financial and accounting
advisory services

Office hours:
First and third Wednesday
9.30am - 5.00pm

129 Vincent Street, Beverley
9646 1566 (Monday - Friday)

SAVE THE DATE

Spring Back to Beverley

SEPTEMBER 2022

Celebrating 150th Anniversary of Beverley Road Board, 150th
Anniversary of Dead Finish Museum &
other significant Shire of Beverley projects

Watch this space for more information.....



OLD CHARM COUNTRY PUB
ACCOMMODATION AND FREE CAMPING
OPEN FIRES AND CHARACTER DINING ROOMS
VISIT FOR THE EXPERIENCE

OPENING TIMES:
MONDAY & TUESDAY FROM 5.00PM FOR DINNER
WEDNESDAY-SATURDAY FROM 12.00PM AND
SUNDAY FROM 11.00AM FOR LUNCH AND DINNER

PH: 9641 4095 444 GREENHILLS ROAD, GREENHILLS



Beverley Horse and Pony Club



Avon Zone Showjumping Runoffs: run by the Avon Valley SJ & Pony Club and Mortlock PC at the Northam oval on the 23 August. Jessamin, Tealah, Trinity and Carly all competed at this event. Jessamin, riding Playboy, placed 1st in the 60cm optimum time. Tealah, riding Falcons Tempation, placed 4th in the 90cm. Trinity, riding Ziggy, rode well over a challenging course. Carly, riding Jazz, place 1st in the 80cm. Well done to all our riders.



Active Riding Championships: on the 05 and 06 September at Serpentine PC two Beverley PPMG teams set up camp for 2 days of games and novelties. The first day saw Beverley Team 2 (Sam, Jack, Mac, Carly and Oscar) place 3rd and Beverley Team 1 (Tealah, Trinity, Emily, Jessica and Bethany) place 7th in a field of 11 competitive teams from across WA. The top 6 teams went through to the finals on Sunday and Beverley Team 2 placed 5th in the State Finals...Woo Hoo!!!. Massive effort from both teams and a huge thankyou to Bethany and Oscar for attending the weekend to be our teams 5th rider. Tealah, Mac, Emily, Trinity, Jessica and Carly competed in our Avon Zone teams for novelties over both days and all came home with multiple ribbons and placings.



September Rally: on the 18 was a great day that just beat the weather. All groups had a blast rotating through Flatwork, Showjumping, Cross country, Rideout and Horsemastership. Super exciting to see all the riders and their mounts improving at each rally and gaining confidence in their skills.



Welcome: Welcome to Zoe (riding Max) Mia (riding Sabrina) and Grace (riding Bonnie) who visited as riding members for the day. Excited welcome back to Jamie-Lee (riding Polo) and Bethany (riding Bridie), so great to see you both back in the saddle!



Department of Local Government, Sport and Cultural Industries



Members

Any new members or queries please contact Jessamin Pain(Coach Co-ordinator) bevpc.coaching@gmail.com or 0447 722 958

2020 Committee contacts:

President: Lisa Maxwell

E l.a.maxwell6@gmail.com

M 0408 902 701

Secretary: Tess Hawke

E keely@westnet.com.au

M 0419 879 310

Treasurer: Di Ballantyne

E ballantyne@bordnet.com.au

M 042 7777 764

Coach Co-ordinator: Jessamin Pain

E bevpc.coaching@gmail.com

M 044 7722 958

October events

18 Rally at York Pony Club grounds (due to Beverley Heroic)

24 & 25 Dryandra PC ODE

Follow us on Facebook @ Beverley | West Aust- Horse And Pony Club Events



EVENTS IN BEVERLEY 2020



★★ 2020 ★★

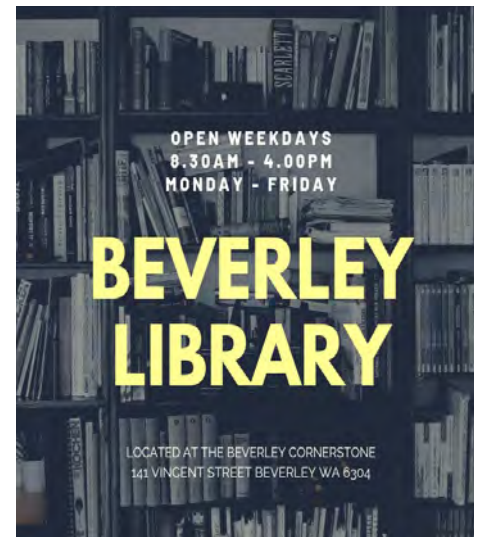
Tuesday 06 October	Wolfgang's Musical Circus
Saturday 17 October	Beverley Heroic
Sunday 18 October	Beverley Heroic
Saturday 17 October	Khanacross - BORMSA
Sunday 18 October	Driver Development Day - BORMSA
16 -17 October	Cocky's Crossing
23 - 24 October	Cocky's Crossing
23 - 24 October	Beverley Rose Show
December	Christmas Concert

The flag was flown at half-mast on the Beverley Town Hall as a mark of respect to:-

- STRANGE, GENE ANDREW
- MOURISH, NIGEL DUDLEY

BEVERLEY BLARNEY DEADLINE DATES

EDITION	DEADLINE DATE
November Edition 2020	Thursday 22 October 2020
December Edition 2020	Sunday 22 November 2020
January Edition 2021	December 2020
February Edition 2021	January 2021



Do you want to advertise in the
Beverley Blarney
ADVERTISING RATES

Monthly Advertising

Size G - Full Page	\$182	
Size A - 122 x 180mm	\$96	
Size F - 122 x 135mm	\$72	
Size B - 122 x 89mm	\$47	
Size C - 60 x 89mm	\$29	
Size D - 5 lines*	\$8	*MUST BE PAID IN ADVANCE
Size E - 3 lines*	\$5	*MUST BE PAID IN ADVANCE
Trading Post*	\$3	*MUST BE PAID IN ADVANCE

Annual Advertising

Size G - Full Page	\$1,820
Size A - 122 x 180mm	\$960
Size F - 122 x 135mm	\$710
Size B - 122 x 89mm	\$470
Size C - 60 x 89mm	\$290

- 120 characters max.



BEVERLEY BLARNEY

1,100 copies each month

Community notices are free of charge

The deadline for the next Beverley Blarney is 4pm

Thursday 22 October

Contact our friendly Shire staff today
 Shire of Beverley

PO Box 20 Beverley WA 6304

Phone: 9646 1200

Email: blarney@beverley.wa.gov.au

Online editions: beverley.wa.gov.au

DISCLAIMER

The information in this publication is of a general nature as a service to the ratepayer. The articles included herein are not intended to provide a complete discussion of each subject. While the information is believed to be correct, no responsibility is accepted for its accuracy. No liability is accepted for any statements of

OCTOBER 2020

MONDAY	TUESDAY	WEDNESDAY	THURSDAY	FRIDAY	SATURDAY	SUNDAY
			1 CRICKET TRAINING LINE DANCING	2 OP SHOP RECYCLE BIN	3 OP SHOP COMMUNITY MARKETS AT CWA HALL	4 DEAD FINISH MUSEUM OPEN TENNIS CLUB BUSY BEE BOWLING CLUB OPENING DAY
5 KNITTING & CROCHET GROUP WEIGHT WATCHERS	6 MEN'S SHED STAY ACTIVE QUILTING TREE & GARDEN MEETING WOLFGANG'S MAGICAL CIRCUS	7 RSL MEETING BADMINTON ROAB	8 CRICKET TRAINING LINE DANCING	9 OP SHOP CROPPING SUBMISSIONS CLOSE	10 MEN'S PENNANT BOWLS	11 DEAD FINISH MUSEUM OPEN TENNIS CLUB OPENING DAY
12 KNITTING & CROCHET GROUP WEIGHT WATCHERS INSTAGRAM MASTERCLASS	13 MEN'S SHED STAY ACTIVE QUILTING STORYTIME & TOY LIBRARY	14 BADMINTON LADIES TENNIS	15 CRICKET TRAINING LINE DANCING	16 OP SHOP COMMUNITY GARDEN OFFICIAL OPENING OPENING NIGHT OF COCKY'S CROSSING RECYCLE BIN	17 MEN'S PENNANT BOWLS BORMSA KHANACROSS BEVERLEY HEROIC CYCLOX COCKY'S CROSSING	18 TENNIS CLUB CHRIS BOLADERAS MEMORIAL TROPHY BORMSA DRIVER DEVELOPMENT DAY BEVERLEY HEROIC DEAD FINISH MUSEUM OPEN FRIENDS OF THE DALE RIVER AGM
19 KNITTING & CROCHET GROUP WEIGHT WATCHERS INSTAGRAM MASTERCLASS	20 MEN'S SHED STAY ACTIVE QUILTING	21 BADMINTON LADIES TENNIS CRC AGM	22 CRICKET TRAINING LINE DANCING BLARNEY DEADLINE	23 OP SHOP BEVERLEY ROSE SHOW OPEN GARDENS COCKY'S CROSSING	24 MEN'S PENNANT BOWLS BEVERLEY ROSE SHOW OPEN GARDENS LAST NIGHT OF COCKY'S CROSSING	25 DEAD FINISH MUSEUM OPEN
26 KNITTING & CROCHET GROUP WEIGHT WATCHERS INSTAGRAM MASTERCLASS	27 MEN'S SHED STAY ACTIVE QUILTING BOOK FAIR	28 BADMINTON LADIES TENNIS AG SOCIETY AGM BOOK FAIR	29 CRICKET TRAINING LINE DANCING BOOK FAIR	30 OP SHOP FRIDAY BINGO RECYCLE BIN	31 MEN'S PENNANT BOWLS CHOIR MUSTER AT PLATFORM THEATRE	