



# BEVERLEY BLARNEY

Edition 368

June 2015

No Charge

## Airfield Lights Activated

The “Light Up The Strip” campaign culminated in a community gathering at the Airfield on Wednesday 29<sup>th</sup> April 2015. Approximately 150 people attended the official launch of the Solar Runway Lighting, held on the RFDS transfer area outside the main hangar at the Beverley Airfield.

While the crowd enjoyed a free sausage sizzle, they were treated to an aerial display second to none, with local pilot, John Barrett-Lennard completing circuits over the airstrip as a precursor to what can only be described as a jaw-dropping, and for some, stomach turning, display of aeronautics. RAAF Flight Lieutenant, Ray Werndly, a Beverley resident in the mid 70’s during part of his childhood, amazed the crowd in his PC9.

During the official ceremony, Shire President Dee Ridgway spoke of Mr John Lane, President of the Beverley St John Ambulance who has been the driving force behind this project to purchase and install solar runway lighting for the purposes of the Royal Flying Doctor Service (RFDS) and of Mr Graeme McDonald who was instrumental in ensuring the correct design and specifications for the project.

Together with funding from the Regional Airports Development Scheme (RADS), which is administered by the Department of Transport and funded through the State Government’s Royalties for Regions program, the local St John Ambulance, the Shire of Beverley and funds raised by the community of Beverley and beyond, the RFDS is now able to conduct operations between dusk and dawn. Michael Bleus, RFDS chief pilot, praised all involved for taking the initiative to value add to the services of emergency health care for the local and surrounding districts. In the last year the RFDS had 16 call outs to the Beverley Airfield.

St John Ambulance Regional Manager for the Wheatbelt, Kalie Gladwin, highlighted the benefits this project will have for neighbouring towns that do not have airfield lighting.

Shire of Beverley CDO, Kathryn McLean, emphasised the benefits of collaboration within a community and highlighted the ongoing cooperation received from the Beverley Soaring Society throughout this project and their support to enable the RFDS to operate when required.

To conclude the official ceremony, Chief Pilot, Michael Bleus, activated the lights for the first time allowing local pilots, Alan Sattler and John Barrett-Lennard to take off and for John to return safely, guided by the new lights and illuminated windsock.

*Below: Solar lights activated for the first time and the crowd assembled for the official launch of the emergency lights. Photo’s courtesy of Hollie Smith*





## **President Report**

**June 2015**

### **Workforce Planning**

The Shire of Beverley has recently undertaken a review of its workforce planning requirements, taking into account strategic, operational and legislative responsibilities which will be realized within the Shires' current staffing budget allocation. Achieving organisational outcomes is reliant on a workforce with appropriate capacity, skills and knowledge and is a continuous process.

### **CCTV**

Council has been successful in securing funding for installation of CCTV surveillance in Vincent street near Memorial Park. This area has been a source of ongoing and costly vandalism.

### **Tourism Planning Workshops**

Thanks to those community members who participated in the recent Community Tourism Planning Workshops where it was explored WHY develop tourism planning, HOW it can be sustainably progressed under a Planning Framework and WHAT can be done with the assets we have. Ideas around branding were also discussed. The Workshops reinforced the Tourism Steering Committee's conclusions that there could be economic and social benefit in a planned approach. There will be more opportunities for community feedback at the Beverley Show and in a proposed questionnaire.

### **Main Roads Meet and Greet**

Beverley Shire recently hosted a "Meet and Greet" for regional road group members with Main Roads Regional Manager Craig Manton. Shires represented along with Beverley included Corrigin, Cuballing, Kondinin, Lake Grace, Wickepin and Williams.

### **Round 1 National Stronger Regions Application Unsuccessful**

Beverley's application into round one of the Federal National Stronger Regions Fund for the Community Centre project was unsuccessful. Feedback has been requested and the CEO, Community Development Officer and Shire President have attended a follow-up information session in preparation for a refined submission to round two which closes at the end of July.

### **Road Maintenance**

The maintenance grader has been busy since the rain, recently out west on Edison Mill road. If you are aware of maintenance issues such as the washout near bridge 3197 on the York Williams road which was threatening to undermine, please report them to the Shire office for investigation. (Hopefully we get some more rain soon!)

### **Avondale Collection – Honorary Museum Director**

Council has supported a proposal to engage an honorary museum director for the Avondale Collection to progress its recording and management, establishing a link between the Shire and the Avondale Farm Project Association (AFPA) who have been invaluable in continuing overseeing and maintaining the collection.

In 2009 Council agreed to become custodian of the museum collection when the National Trust (WA) took over responsibility of the property from the Department of Agriculture and there was concern it would be dispersed as part of that process. The Shire is currently developing a management agreement with AFPA to formalize their role on behalf of the community. If you would like to become involved as an Avondale volunteer and member of AFPA please contact AFPA President Jo Johnson on 0417 951 513

### **Electronic Scoreboard**

The electronic scoreboard has been installed at the recreation ground. Staff recently were receiving instruction on its use when local identity Mary Blechynden happened to be walking the oval. Unbeknown that the testing was in progress, she was most surprised to be receiving messages such as "hello Mary" and "enjoy your walk"! The scoreboard was christened by the ladies hockey club in their game against Jennacubbine on Saturday 23<sup>rd</sup> May. As with other Council facilities use of the electronic scoreboard can be booked through the Shire.



### **Visitor Centre Relocation**

The number of volunteers available to keep the Visitor Centre open on a regular basis has been dwindling and Council has supported a move for it to be relocated to the Community Resource Centre, ensuring a daily service during office hours. Volunteers are still invaluable to meet and greet at the museum, particularly on the weekends. During the week if there is no-one in attendance at the museum a key can be requested for self-viewing by visitors. Please contact the CRC if you are interested in helping out.

### **Community Grants**

Keep an eye out for the next round of Community Grants which will be advertised in the July Blarney.

### **Local Health Advisory Group**

The Local Health Advisory Group is your link between the health services in Beverley and our community and the group is seeking some new members. If you are interested in becoming involved please contact Chairman Cr Keith Murray ph 9646 0737 or Health Services Manager Michelle Bauer at the hospital 9646 3200.

### **Airfield Lighting Project**

The airfield lighting project has been completed and the official "Turning on of the Lights" was held on Wednesday 29<sup>th</sup> April. (The lights have already been required by the RFDS). Congratulations to John Lane and the Beverley St John Ambulance for driving this project and to the community for an incredible fundraising effort.

Dee Ridgway  
Shire President



## SIGNIFICANCE ASSESSMENT OF AERONAUTICAL MUSEUM

In order to plan for the future of the Aeronautical Museum, a Significance Assessment of the collection will be completed, beginning in July 2015.

The assessment will highlight:

- strengths and weaknesses in the collection;
- history, context and value to communities of the collection; and
- provide recommendations for management of the collection;

and will include collation and storage of relevant documents and stories associated with the collection.

### **AND YOUR HELP IS REQUIRED!**

Many of the items in the collection have no supporting paperwork or "story" so all current and past museum volunteers, donors and supporters are asked to contact Kathryn McLean as soon as possible with any information or documentation pertaining to the current collection.

NB no new items will be accessioned during this process.

Contact Kathryn McLean, CDO, Shire of Beverley, PO Box 20, Beverley WA 6304, Ph (08) 9646 1200

*This Shire of Beverley project has been supported by*



Government of Western Australia  
Department of Regional Development



## SALE OF SCRAP BY TENDER

### JARRAH FLOOR BOARDS

Approximately 110sqm of old and used jarrah bearers, joists and floorboards.

Located at the rear of the Beverley CRC Building.

Inspection by appointment, please contact Daryl 0427 461 200

Monday – Thursday, 9.00am – 3.00pm only.

Tender is based on As Is/Where Is and the successful tenderer is to arrange removal within 14 days of tender acceptance.

Tender to be received in a sealed envelope by 4pm

Wednesday 17 June at the Shire Office

136 Vincent Street (PO Box 20), BEVERLEY, WA 6304.

No tender necessarily accepted.

## Time To Say Goodbye to Beverley From Lyn Kay

After 10½ years in Beverley it is time for me now to move on, first I will be house sitting in Busselton for 2 months and then I don't know where - but ready for a new journey.

I have been on a very emotional rollercoaster ride for the last 4 years and my house will be going on the market soon - hopefully!

To all the youth and children in the Wheatbelt, thanks for sharing the most amazing ride with lots of excursions, camps, disco's, school balls, Active After School, boxing classes, Nyoongar Sports, wheelchair basketball and lots more. To have a job in the community that opened up so many doors for young people to thrive, I never thought I would meet so many wonderful people through work.

Also, a very big heartfelt thanks to my volunteers who helped me over the 7 years when I ran the Beverley Youth Centre - Robyn Cusack, Darren White, Shane Greenmount, bus driver Ted Strahan, Karaoke Queen Debbie Eastwell, Morgen and Police at the time - Paul (Bear), Kerry Brindle and Darryl Hagan.

I would also like to thank sincerely the Shire of Beverley for your ongoing trust and belief in me, Beverley District High School, local community groups, community members, Local Drug Action Group and families who helped with donations of sporting equipment, lounges, pool tables, games and wonderful support, it truly meant the world to me!

Lyn's Gym at the Court House - with over 30 years experience in the fitness industry, this was a fantastic time in Beverley for me. First we started in my carport, but thankfully the numbers started to rise and I moved down to the Court House to lay some law and order on my participants! This proved difficult with some of them giving me a hard time - Walter Swan (84 years old) always stirring me up with others. I also introduced them to Reebok Sporting gear! Great sing alongs to the music DVD's playing in the background whilst I put them through their paces. Lots of seniors, youth and community attending, also from surrounding towns made it enjoyable and the best "Job in Town"!

I would like to thank HACC for asking me to exercise their clients, so much fun and I have never taken a 104 year old until then, inspirational and loved the "cuppa" and chats afterwards.

A special thanks to the boxing group, although we are only a small group, you stuck with me for over 5 years. Truly inspirational and your support with my tears, pain and heartache through the most difficult journey of my life, I will never forget your kindness, support and love. Thanks Lois, Judy, Graham, Ange, Nikki, Ali, Tess and others who attended at times.

To all the friends and acquaintances I made whilst here, I would love to stay in touch and hear about your continuing journeys. I would also like to thank Robyn and Alan Cusack who have been by my side, listening, supporting, feeding and helping me during the difficult times, especially over the last couple of years. Your friendship is special and I will cherish it forever.

My wonderful neighbours, Maureen Cole, Derick and Irene Birch, the love and support you have shown me since I moved to Beverley has been unbelievable, you will always be special in my heart forever.

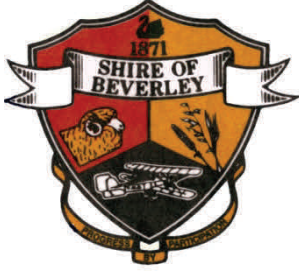
Thanks to lifelong friends, Jeff, Julie, Bruce and John, you are definitely what friendship is all about, the occasional phone call, message or meal just to show your care.

I would like to thank my mum and dad for their wonderful support and love. I invited them up to Beverley to live with me nearly 3 years ago but did not know that I would be losing my house. It has been difficult for them to see my heartache but the unconditional love of parents is something I have always had and am so lucky to have them in my life.

Lastly, my sons Michael and Shane and families, I love you with all my heart - thanks.

I will be having a BBQ on Saturday June 20th at my house - 32 Great Southern Highway Beverley to say goodbye, if you would like to call in, even for a cuppa or drink, I would love to see you After 4pm, please BYO drinks, meat and salad.





# SHIRE OF BEVERLEY

## KERBSIDE PICK UP

**JUNE 2015**

Council will provide a GREEN WASTE and BULK WASTE Collection for residential properties within the townsite boundary commencing on the following date:

**MONDAY, 8 JUNE 2015**

### WILL REMOVE

- Garden and green waste - max length 1.5m
- Old furniture
- Stoves and refrigerators (doors removed) and other white goods
- Car parts – only if they are drained of all fluids
- General household items, max length 1.5m
- Metal, wire, etc

NOTE: PLEASE GROUP SIMILAR ITEMS TOGETHER

### WE WILL NOT REMOVE

- ❖ *Building Materials – bricks, rubble, sand, etc*
- ❖ *Asbestos and cement products*
- ❖ *Renovation and demolition waste*
- ❖ *Tyres, batteries*
- ❖ *Foodstuffs*
- ❖ *Hazardous Chemicals, paint, etc*
- ❖ *Metal or plastic chemical drums*

### CAR BODIES AND WATER TANKS

Removal of car bodies and/or Water Tanks is **by appointment only**, please phone the Shire Office on 9646-1200

### PLEASE FOLLOW THESE STEPS TO MAKE COLLECTION EASIER:

1. Place bulk waste **NEATLY** on the street verge.
2. Similar waste to be grouped **SEPARATELY**, eg Green Waste, Furniture/timber for recycling purposes.
3. Do **Not** obstruct footpath.
4. **REMOVE** fridge doors and **DRAIN** oil from machinery parts.
5. Please **DO NOT** place your bulk waste out **UNTIL THE WEEK-END PRIOR** to the collection date. This constitutes littering and is liable to incur a penalty.
6. Any items **NOT REMOVED** from your verge, **PLEASE REMOVE** or a penalty may be incurred.

## **MONSTER CAKE STALL**

Saturday 13 June 2015  
8.30am onwards

To raise funds towards the upkeep of Comet and Robbie, our resident Clydesdales at Avondale.



Raffles, cakes, slices, preserves, knitted teddies, pot plants and more.

Run by AFPA at the Lions Shelter Next to IGA



*Thanking my wonderful family and friends for your lovely cards, good wishes, flowers, phone calls and gifts for my 90th Birthday.*

*Your surprises have left lovely memories.*

*Shirley Carr*



## **CBH HARVEST CASUAL WORK 2015**

Applications now open at [careers.cbh.com.au](http://careers.cbh.com.au)

Positions available include:

- **Receival Point Operators**  
(Plant Operators at Port Terminals)
- **Grain Samplers**  
(including weighbridge duties)

CBH are looking for people to work at our grain receival points across the state for the harvest period commencing from early October. If you don't have industry experience, training will be provided before you start.

To find out more information or to apply – visit the Careers section on our website today.

Applications close 31 July, 2015 [www.cbh.com.au](http://www.cbh.com.au)

## **Thank you**

Stan and Carole Dorman, Michael and Anne Woods sincerely thank all those wonderful volunteers who gave up their Sunday afternoon to attend our fire on 3rd May.

With the strong wind, it required an effort to control and fortunately no real damage.

A special big thank you to our energetic fire officer, Paul Schilling.

## **Thank You**

On behalf of Glenda Tasker and her family, we wish to thank Dr Oley and all of the caring staff at Beverley Hospital.

Thank you to the Beverley Men's Shed for all of their generous support throughout the recent illness and passing of David Tasker.

Beverley is certainly a caring community.

**PETER PRICE FARRIER**  
 Providing Farrier Services  
 0409 839 816  
 gomazz1@me.com

**HENS FREE RANGE LAYING**  
 \$10 each, 10 for \$90 or 20 for \$140  
 Free delivery THURSDAY 02 JULY  
 Beverley Kokeby York Brookton  
 Phone 9844 3485

**LOST ROOSTER**  
 Young White Rooster in a large secure white box, on the highway between State Forrest and Pike Road turn off in Westdale.  
 Reward of a carton of beer of choice offered for safe return of "Tails" THE ROOSTER.  
 Please SMS to 0488 099 190 if you found him. Old owner breeder very distressed and will collect when convenient to finder.

**St Mary's Society Meeting**  
 Date: Tuesday 9 June  
 Time: 1.30pm  
 Venue: Church  
 Meeting to follow at Church Hall. Please attend.

**TV Antennas**  
 UHF CB Repairs  
 Digital TV Upgrades  
 Reception Problem Solving  
 Qualified communications technician.  
 Reasonable labour charges.  
 Onsite service.  
 Repairs and installation to some car audio, car security, mobile phone handsfree.  
 Reversing camera systems for automotive and machinery.  
 Based locally in Beverley  
**Regional Antennas Plus**  
**ALAN PRIMROSE**  
**0408 002 965**

*How to attract and retain a*  
**VOLUNTEER**  
*Workshops*

*Volunteering WA are coming to Narrogin to deliver a range of Volunteer workshops for local clubs and organisations in the Wheatbelt South on how we can find, manage and keep our Volunteers!*

**Tuesday 23rd June**  
 5:30pm — 7:30pm, John Higgins Centre  
**Attracting & Retaining Generations X, Y & Boomers**  
*Do you find it hard to engage volunteers of different age groups? What makes them tick? Take a two hour fascinating look into the generations and learn how to attract, retain and work with them all.*  
 \*\*\* RSVP ESSENTIAL for catering purposes \*\*\*  
 This is a good all-rounder workshop

**Wednesday 24th June**  
 9:30am — 12:30pm, Town Council Chambers  
**Key Issues of Volunteer Management**  
*This fast-paced three hour workshop will develop your skills and get you well and truly started in effective Volunteer management. It covers key principles such as:*  
 1) What motivates people to Volunteer, to stay or leave your club/organisation; and  
 2) Job Descriptions, recruiting, selecting, retaining, rewarding, dismissing volunteers and more...

**Volunteer Human Resource Management**  
*Develop strategies to deal with common issues to give your volunteers the best experience while increasing your club/organisation's professional credibility.*  
 Conflict: identify the cause, establish and implement strategies for dealing with conflict, Supporting Volunteers and Volunteer Rights and Responsibilities

**Dealing with grievances and tricky volunteer situations**  
*Learn how to deal with some of the tricky situations that can unravel the best club/organisation*  
**FREE SUPPER PROVIDED!!**

**Wednesday 24th June**  
 1.00pm — 4.00pm, Town Council Chambers

**Wednesday 24th June**  
 5.30pm — 7.30pm, Town Council Chambers

*Presented by Gilda Davies, Manager Training and Development, Volunteering WA. Gilda comes from a farming background and understands volunteering issues in small communities. She has been developing best practise in Volunteering management training for the last three years with Volunteering WA and has an international background in human resource management and business.*

RSVP by Friday 19th June to Loriann Bell at [adminsupport@narrogin.wa.gov.au](mailto:adminsupport@narrogin.wa.gov.au) or call 9890 0923

Wheatbelt Development Commission | volunteeringWA | Town of Narrogin | Government of Western Australia | Department of Sport and Recreation | lotterywest supported

**WINDSCREENS & GLAZING**  
 All glass replacements  
 - vehicle, residential & commercial -  
 Licensed to handle insurance work and private  
**AVON VALLEY WINDSCREENS**  
**Ron Robinson**  
**0429 001 393**  
 rerobinson@westnet.com.au  
 www.avvwindscreens.com.au

\* Specialising in all glass replacement  
 \* Chip repairs  
 \* Windscreen replacement in all vehicles  
 \* Door windows \* Rear windows  
 \* Safety glass  
 \* Residential glazing \* Commercial glazing  
 \* Tinting \* Shower screens  
 \* Shelving \* Mirrors

**We come to you!**  
 Lic MR 11693



## Friendly Club

The friendly club is open to everyone so please come along.

**THURSDAY 11 JUNE 2015**

The group will be meeting at the  
**Alex Miles Lodge  
at 2.00pm.**

The hosts for the afternoon will be the Beverley Weight Watchers Federation.

For information on the friendly club please contact Sylvia 9646 1072.

## **RSL Information**

### Indoor Markets

Saturday 06 June 2015

8.30am - 12.30pm

Sausage Sizzle, Tea and Coffee available.



## **South West Outreach Team**

Speaker:

**DAVID WARWICK**

Is coming to  
**BEVERLEY**  
Real Life Church

**Wednesday 3rd June**  
**10.00am start**

A relaxed morning.  
Morning tea .

All very welcome.

Phone: 9646 0282  
Mel or Bev Vivian



## *Cake Stall* *Saturday 4 July*



The Beverley Ag Society will be holding their annual cake stall on Saturday 04 July. Funds raised go towards the running of the Beverley Show day. There will be lots of yummy things for sale and raffles with great prizes to be won. All donations of goods to sell will be gratefully accepted.  
Contact Sue 9646 4073

### **COUNTRY LINE DANCING**



**Every Thursday**  
**9.30am**  
**to 12.00pm**

**Beverley Town Hall**

**Enquires: Jill**  
**9646 0283**

### **Beverley Photography Group**



- ◆ Social interaction with all levels of like minded photography enthusiasts who wish to be challenged to improve their skills.
- ◆ Providing opportunities to shoot beyond images they would normally take.
- ◆ Aim to learn together and promote photography in the local area.

Keen photographers of any level welcome. We meet once a month. Contact Colleen Sleer for more information [caugust@bigpond.com](mailto:caugust@bigpond.com) or 0408 319 022.

## **D.J. YATES**

*BRICK & STONEWORK RESTORATION*  
*AUTHENTIC REPOINTING OF MORTAR*  
*RIISING DAMP RECTIFIED*  
*PROPERTY MAINTENANCE*

PHONE DAVE ON 0419041542  
A/H 96412868



Inviting all past and present members of the  
**Beverley Horse & Pony Club**



To celebrate our **50th Anniversary**

Join us for Lunch, Riding Displays and many memories  
 From 10am at the Pony Club Grounds

**Sunday 30 August, 2015**



northam  
 optical



[www.northamoptical.com.au](http://www.northamoptical.com.au)

- Locally owned and operated
- A team with over 60 years experience
- Buy one pair get **one pair free\***
- Great range of frames and sunglasses
- Friendly and efficient customer service
- Competitive prices
- Latest Technology
- Bulk billing to Medicare
- HBF and DVA Provider

\*Terms and Conditions apply. See in store for details.

**138 Fitzgerald Street** Northam P 08 9621 1131  
 E [northam.optical@yahoo.com.au](mailto:northam.optical@yahoo.com.au)



SHED ASSEMBLY

SHED NO TEARS

*Ryan Patterson*

Ph: 0427 424 672

e-mail: [rockanroo@hotmail.com](mailto:rockanroo@hotmail.com)



## **BEVERLEY HEALTH SERVICE**

*Working together for a healthier country WA*

### **Home and Community Care (HACC)**

May has been a very busy month once again at the Day Centre with outings to the Narrogin Garden Centre and Café for a buffet lunch and a trip to Northam to see the vibrantly painted wheat bins.

We have also been entertained by the Beverley Line Dancers and a guest pianist who led us in a sing along with the Lodge residents.

Clients and volunteers were busy finishing lots of woollen items which were either raffled or sold at Australia's Biggest Morning Tea, held in conjunction with the school.

A respectable sum of \$1047.00 was raised by these sales and donations made for a cuppa on the day. This has been donated to the Cancer Council of Western Australia.

NATIONAL VOLUNTEER'S WEEK is observed in May and Beverley Health Service hosted a "thank you" morning tea to acknowledge all of our volunteers who so generously donate their time to assist the Beverley community by delivering meals on wheels, transporting clients to medical appointments and helping the Day Centre clients.



Once again, a sincere thank you for all you do for your community.

Anyone interested in becoming a volunteer please contact Beverley Health Service office on **9646 3200** Monday to Friday.

### **Farewell Dorothy**

**TUESDAY 30<sup>TH</sup> JUNE from 10:00am to 11:30am**

**(St John Ambulance Hall)**

Beverley Health Service would like to extend an invitation to all HACC clients present and past and HACC volunteers to a farewell morning tea for our Home and Community Care Coordinator, Dorothy Sampson, who will be retiring at the end of June.

Please contact the Health Service on 9646 3200 if you will be attending (for catering and seating purposes).

**The Health Service would like to wish Dorothy a happy and productive retirement. We thank her sincerely for her dedication to contributing to the wellbeing of HACC clients and the community at large. Dorothy has done this over many years. We will all miss her!**

The Centre Based Day Care will be having a stall on Friday 19<sup>th</sup> June at the Lions kiosk (next to IGA) selling winter warmers - scarves, beanies and blankets (some in footy colours) and produce .

*Proceeds of this stall will be donated to Motor Neurone Disease Foundation*

*Our Values: Community | Compassion | Quality | Integrity | Justice*





*All welcome to  
York Garden Club  
OPEN DAY  
Church of Christ Hall*

**WEDNESDAY 01 JULY  
10.00am - 2.30pm**

**FREE ADMISSION**

**There will be:**

- ☺ **Gardening talks**
- ☺ **Raffles**
- ☺ **Stalls**
- ☺ **Tea & Coffee**
- Light morning tea \$2**
- ☺ **Soup with bread \$2**



**Come along and enjoy the fun!!**

**CONGRATULATIONS  
Beverley's Everyday Hero**

Valery Seeber proudly participated in the HBF Run for a Reason on Sunday 24 May 2015, with thousands of people raising much needed funds for charities.

She walked 12kms and her official time was 1:36:15. Initially her target was to raise \$1,000 but in the end she went over her target raising a total of \$1,322.50 that goes towards Lifeline WA.

Valery has alluded that she may even run next year. A big congratulations from the Beverley community on doing such a marvellous job.



**PURLOWE TINETTI  
FUNERALS .com**

*Cremations & Burials  
Country or City  
Pre-paid Funerals*

*Arranged in your home or  
264 Fitzgerald St Northam*



**Call the Tinetti Family  
9622 1411**



AUSTRALIAN  
FUNERAL  
DIRECTORS  
ASSOCIATION



**Marcell's Cleaning**

- \* Domestic or Commercial \* Move In / Move Out
- \* End of Lease - Bond Recovery \* Spring Cleaning
- \* Weekly \* Fortnightly \* Offices \* One-Off Cleans
- \* Prompt and Professional Service
- \* Gift Vouchers Available

**Maree Thornton**  
**Phone: 0429 646 155 / 08 9646 1558**  
Beverley & Surrounding Areas

**NORTHAM  
HYUNDAI**

**SALES ★ SERVICE ★ PARTS**

**9622 5588**  
www.northamhyundai.com.au

**37 Fitzgerald Street, Northam**

**BSB GARDENING**

BSB Gardening offers gardening services, rubbish removal, gutter cleaning, handyman work, louvre replacements and moving.

We can also paint your house number on your verge (so Emergency Services can find you quickly if needed).

**Phone 0429 646 155**

## AIRSTRIP LIGHTING CELEBRATIONS

On Wednesday, April 29th, the long awaited official ceremony to commemorate the installation of the new airstrip lights took place at the local airstrip among a crowd of more than 100 attendees. This ceremony was the culmination of approximately 18 months of keen planning and a well-supported fundraising campaign. While everyone enjoyed a free sausage sizzle, RAAF Flight Lieutenant Ray Werndly delighted the crowd with an impressive aerial display in a PC-9, a single-engine, low-wing, tandem-seat, and turbo-prop training aircraft. This was a highlight of the evening with Ray flying all the way from the Pearce Air Base especially for the event and there were lots of 'oohs' and 'aahs' heard among the crowd. Kathryn Mclean, Community Develop Officer for the Shire of Beverley, officiated the ceremony which included speeches by Shire President Dee Ridgway, RFDS Chief Pilot Captain Michael Bleus, and SJA Regional Manager Kalie Gladwin. At the closing of the official speeches, Michael Bleus was given the honour of 'flicking the switch' to light up the strip and the crowd erupted in applause as the lights came on for the first time. Local pilots John Barrett-Lennard, flying a Cessna 150, and Alan Sattler, flying a Vans RV6, then took off from the strip with John coming back around to land again, guided in by the new lights for the first time.

There are many people who deserve to be acknowledged for making this achievement possible. Firstly, John Lane, our very own sub-centre President, whose vision to see lights installed at the local airstrip was followed up with action and a passion to see it through to the end. His passion was contagious and soon others, seeing the benefit this would make to our community, eagerly came 'on board'. Thanks must also go to the Shire of Beverley for their generous contribution with site works and labour, Graeme McDonald for his expertise as an electrical engineer, the Beverley Soaring Society, the Beverley community who raised a massive \$45 000, and many others who gave so generously. It was also a delight to see the Sandgroppers Chapter of the CMCA attend the evening in a continued show of their support, having given generously to the project a year ago.

The installation of lighting at our airstrip will not only benefit the community of Beverley but also surrounding towns whose airstrips are not yet able to be used at night. Last year, the RFDS came to Beverley 16 times to attend to daytime emergencies. Now, thanks to the successful Light up the Strip campaign, we are ready should we require them for night-time operations also, when the RAC chopper is unavailable.



RFDS Chief Pilot Captain Michael Bleus  
flicks the switch.



Local pilot, John Barrett-Lennard prepares to land  
using the airstrip lights to guide him down.

### TIMELY INSTALLATION

On Thursday May 14<sup>th</sup>, just two weeks after the official ceremony, the lights were turned on again to allow the Royal Flying Doctor plane to land on the airstrip after dark. Though we'd rather not have these emergencies, it is very satisfying to see the benefit of the lights in such a short time. John was super-excited and took this photo so you could all see the benefit of your generosity.



St John Ambulance  
Beverley Sub Centre  
PO Box 152, Beverley WA 6304



## BEVERLEY HISTORICAL SOCIETY

Time is passing by very quickly and here we are again writing for another edition of the Blarney.

Attendance was down at our last meeting, but we still had a good meeting.

The Garden and Tree Society have been busy in the garden at the Museum. Among the plantings that they have done are two Anzac Grevillea's. We think that planting them is a wonderful idea and when they start to flower it will be a wonderful reminder of those men who fought in WWI. The garden has also acquired two beautiful bird baths. We are sure that the birds will have a wonderful time. Many thanks to the society for their wonderful generosity.

A Bev Smith from the Eastern states was in Beverley for a family reunion. She has written a book titled "Our Smith's", and she has kindly donated a copy to us. It seems there are Smiths and Smiths but they are not related.

We have also received a book titled "A Story of Colin Charles Schilling" Colin died in January 2015.

Our local author Fred Bremner has written book number four. The title of this one is "Bulldozing the Avon". He was kind enough to give us a copy. You can obtain your own copy of Fred's book, advertising to the right of this page.

The next meeting of the Historical Society will be held on Monday 08 June at 2pm at the Dead Finish Museum.

Gail Alabach  
Hon. Secretary  
Enquiries: [bhsdeadfinsih@gmail.com](mailto:bhsdeadfinsih@gmail.com)

# Bulldozing the Avon

A collation of original letters and documents relating to the clearing of the Avon River during the 1950's and 1960's (Avon River Training Scheme).

The scheme was first suggested by the Brookton Road Board in 1946, see page 14.

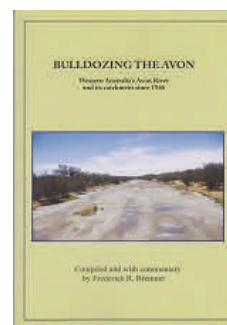
Also a history of the construction of Qualandary Crossing.

Written and collated by Fred Bremner

\$25 plus postage approx. \$3.

Available from  
The Beverley Newsagency

Fred Bremner  
9646 1115 or 0429 461 115  
[frederick.bremner@bigpond.com](mailto:frederick.bremner@bigpond.com)  
[www.fredbremner.com.au](http://www.fredbremner.com.au)



## E Squire Contracting Services

Water Supply  
Windmills & Accessories  
Solar Pumps:  
Sales, Service, Installation  
Fencing & Yards  
Trenching & Poly Pipe Laying

E Squire Contracting Services  
Beverley and surrounding districts

Phone: 9646 0800

Errol Squire 0438 682 687



# STATE BUDGET: NO FAULT INSURANCE SCHEME

MEDIA RELEASE

15 May 2015

Local Member Mia Davies MLA has said the introduction of a no-fault catastrophic insurance scheme was the right thing to do, especially for those families struggling to cope with a lifetime of medical bills and care as a result of a motor vehicle accident.

The cost of the scheme, announced in the State Budget, will be a maximum of an additional \$99 in the first year for a family vehicle registration.

She said there had been wide Government consultation on the issue and on balance the community was supportive of the initiative.

"I acknowledge that this is an additional cost imposed for vehicle owners, however the State Government issued a Green Paper prior to making the decision to canvas the concerns of the public and provided opportunity for feedback over a 10 week period," Ms Davies said.

"We had a wide ranging public debate which resulted in over 2,300 responses, a majority of which were supportive of a no-fault scheme."

She said the cost of providing lifetime care for people catastrophically injured in motor vehicle accidents was estimated to be an average of \$4 million per person over the course of their lifetime.

The cost of compulsory third party insurance (on a family vehicle) including the new no fault component will be about \$415 from 1 July 2016.

Member for the Agricultural Region Hon Paul Brown said this compared favourably to the cost of CTP insurance in other Australian jurisdictions including South Australia (\$476), Victoria (\$487), Northern Territory (\$531), New South Wales (\$612) and the Australian Capital Territory (\$603).

He said he and his colleagues were conscious of the impact on certain sectors, particularly agriculture and small business.

"We acknowledge that regional motorists have more road accidents proportionally than metropolitan motorists and therefore will be overrepresented in the new no-fault CTP scheme. This new scheme will provide welcomed cover for those regional motorists that are injured catastrophically," Mr Brown said.

In relation to farm businesses, concessions of up to 50% on charges exist in the current Compulsory Third Party (CTP) scheme for vehicles used for farming purposes and farmers are able to obtain seasonal CTP insurance (other professions do not have access to this).

In addition, the Insurance Commission of Western Australia will be lowering the cost of CTP business vehicle rates to be the same as private vehicle classes to reflect their claims experience which will provide some relief to small businesses.

Indicative costs for farm vehicles and trailers are attached.

Class Description	Farm vehicles included in this class	Indicative no fault premium (inc GST and insurance duty)
Private and Business Use Motor cars	Any motor car licensed under <i>Regulation 8 of the Road Traffic (Charges and Fess) Regulations 2006</i> and issued with number plates in accordance with regulation 8 of those Regulations as a farm vehicle shall be entitled to a rebate of 50 per cent of this premium.	\$49.50
Private and Business Use wagons	(Any wagon licensed under Regulation 8 of the Road Traffic (Charges and Fees) Regulations 2006 and issued with number plates in accordance with regulation 8 of those Regulations as a farm vehicle shall be entitled to a rebate of 50 per cent of this premium on the understanding that such vehicle will not be entitled to a further rebate under Class 2(f) and vice versa). (f) Effective for policies commencing from 1 January 2004, any vehicle within this class with tare weight of 2,500 kilos or more owned by a farmer and used solely or principally for carrying the products of, or requisites for, the owners' farming business, shall be entitled to a rebate of 50 per cent of this premium.	\$45.50
Misc class includes: Includes 75cc bikes, Veteran/vintage vehicles Farm Fire Fighting Vehicles	Any vehicle that is owned by a person engaged in the business of farming or grazing and that is fitted or adapted for the purpose of firefighting, licensed under a limited vehicle licence, limiting it exclusively to use on a road for firefighting purposes.	\$29.71
Tractors	Tractors (other than prime mover type but including farm type) and Tractor Plant as defined in the Road Traffic (Vehicle Standards) Regulations 2002 or the Road Traffic Licensing Regulations 1975 and licensed as a Class A or Class B vehicle under subsidiary Regulations to the Road Traffic Act 1974.	\$25.00
Tractor plant	Tractor Plants licensed as a Class C under subsidiary Regulations to the <i>Road Traffic Act 1974</i>	\$60.00
Trailers	Includes all trailers, including boat trailers and truck trailers.	No increase

# TITAN FINANCE SOLUTIONS

## Finance Consulting and Brokering

We help with Commercial and Consumer loan applications for everyone and everything including:

- Home Loans
- Car loans
- Personal Loans
- Commercial Finance
- Asset Finance
- Cashflow Finance.

Access to over 20 lending institutions ensures we can find the right loan for your needs.

We can visit you in your home or at your place of business if more convenient.

Please call Mark Thomas on 0429 471 166 to discuss your needs.



## York Estate Agents (Beverley Division)

### Good, Bad or Ugly We Sell!

Free Appraisals

“Properties WANTED we have qualified buyers waiting now”

Local All Things Real Estate Experts  
Professional and Trustworthy

Residential-Helen Stubing 0407 964 611

Rural- Mike Bawden 0403 268 158

Rentals- Jenette Callaghan 0418 929 011

Office - 9641 1335 Fax - 9641 1334

[www.yorkfn.com.au](http://www.yorkfn.com.au)



### CWA - BEVERLEY BRANCH COUNTRY WOMEN'S ASSOCIATION

**May meeting** was a very busy one with quite a deal of business and as the Agenda for State Conference had arrived, we took the time to go through the motions as set out. Much discussion took place and as there will be a copy of that Agenda in the June edition of "The Country Woman", members are reminded to go through it in your own time and the Branch will vote on the motions at the June meeting.

Progress is being made with the celebration of the 90th Anniversary of the Beverley Branch to be held in August - more details will be available in the July edition of Beverley Blarney.

It has recently come to my notice that there was a Branch of the CWA of WA at West Dale which commenced about 1922. We thank the ladies who made the information available to us and we look forward to taking a copy of those minutes for CWA history research.

This year's country of study is TIBET. We sincerely hope that there was not too much disaster felt in those parts of Tibet though we understand that the countries around Nepal were very aware of the magnitude of the earthquake.

**There will not be the usual light lunch following the June meeting.** **Next meeting** of the Beverley Branch will be held at the CWA Rooms on Thursday 11th June from 10.00am with Morning Tea and general discussion, followed by the normal monthly meeting.



# Beverley Garden and Tree Society

This month we didn't have our usual meeting at the Dead Finish, but took a little trip to Dawson's Nursery where members strolled around the roses and other plants. A truly wonderful display of roses, fruit trees, herbs and potted flowers of all species. We lunched at the outdoor tables, then moved just up the road to buy two bird baths for the museum garden. These were loaded in to the accompanying trailer and then we drove up to the native nursery on the way home. Packing the additional buys into the trailer and bus took a bit of finesse but we managed and arrived home late in the afternoon.

During the next few days the bird baths were installed and for this we thank Ken and Robbie for the proficient job. They look gorgeous and so do the bird baths! A busy bee took place later in the week and we planted all the plants we bought and some more donated by Betty Cable. We have put in more natives down near the compost heap and spruced up the potager garden. The back garden on the museum wall has been tidied and succulents put in for ease of care. All in all it looks pretty splendid.

Not much housework has been done as members will have been busy planting and weeding getting ready for the much hoped for rain. Fingers crossed!

Those of you gardening at home will be putting in the usual things for this time of the year. Brassicas and broad beans can still go in Artichokes seedlings go in at this time and asparagus. An asparagus bed is a really easy care food source as once they are growing they only need cutting back and feeding once a year and the plants last for years. Cape gooseberry plants can go in now too and if anyone needs a few I have lots and can leave them at the CRC for you. Gooseberry jam and gooseberry sauce on roast pork Mmmm!

It is always fun to try something new and this year I have put in some purple cauliflower seeds and ornamental kale. They're not up yet but I look every day. Ornamental kale can be seen in the museum potager garden for those of you that haven't yet seen them.

Remember the show in August and grow something to exhibit, or just nurse a pot or basket to show. Citrus fruit is in abundance and marmalade is on the agenda, or try making your own dried peel for pot pourri or just to eat.

Next meeting Tuesday 2 June at 10.00am at Dead Finish Museum.

Happy gardening everyone !!



BEVERLEY ELECTRICAL SERVICES

Servicing Beverley, Quairading  
and Brookton

For all your Electrical & Solar needs  
Please call

**KARL SMITH**

**0429 887 535**

PO Box 2 Beverley WA 6304

Email [sales@beverleyelectrical.com.au](mailto:sales@beverleyelectrical.com.au)

EC 006578

ABN 52 164 525 3586

## BRIDGE - Card Game

If you would like to come along and enjoy a game of bridge.

We welcome all new members to join us.

**WHEN:** Mondays **TIME:** 1.00pm **WHERE:** CWA Hall

# Countryside Memorials

Cast Stone

Granite

Marble

Plaques

Added Inscriptions

All Repairs and Restorations



25 YEARS PROFESSIONAL EXPERIENCE

FREE DESIGN AND QUOTE

Servicing All W.A. Country Areas

**9622 5544**

**OXTER SERVICES**

[www.oxter.com.au](http://www.oxter.com.au)

[oxter@westnet.com.au](mailto:oxter@westnet.com.au)



## **CRC NEWS**

### **BOOK LAUNCH**

The book launch on Wednesday 06 May at the centre was very well received by the Beverley community. Linda and Mike were very pleased to see that the numbers at this launch had doubled from the previous year. Feedback from the event was exceptional with many of the attendees raving about her new book and to have the opportunity to meet an author. For those of you that were not able to make the evening but would like to purchase either one of her books the centre has copies available at the front reception counter for \$26.99each.

### **CURRY COOKING CLASS**

The Spice Up your Life curry cooking class, hosted at Beverley District High School proved to be a very successful with 13 people attending. Cooking and catering guru Dalene went through the basics of spices, powders and how to make the heat of your curry suit your family as well as providing a display of goodies that you can use, then came the cooking. Each attendee was to provide meat of their choice, which saw a broad variety from pork, chicken to vegetarian, everyone got to go home with what they had created including other curry recipes to try, including accompaniments to enjoy alongside curries.

Dalene will be hosting more cooking classes in the future, so be sure to keep your eye out for advertising or register your expression of interest and we can notify you when dates have been set.

### **LEGO CLUB**

LEGO Club has definitely returned with numbers and volume increasing weekly. The group are currently working on a group project that they hope to display at the Act-Belong-Commit Beverley Show. The club is run on Monday's during the school term from 2.45pm - 3.45pm. The club is a great way for kids to increase their hand and eye coordination and build their hand strength. \$2 per session which includes a delicious afternoon tea.

### **CRC MEMBERSHIPS**

Annual Memberships are per financial year starting 01 July ending 30 June, If you are already a member renewal forms will be posted to you soon, if you are interested in becoming a CRC member call into the centre to find out the benefits we have various types of memberships such as Basic \$5, Individual \$25, Community Group \$40 and Business \$65. Please note, that if you are a business that wishes to have a listing on the [www.beverleywa.com](http://www.beverleywa.com) website you must be a business member of the CRC.

## **CRC EVENTS**

### **Family Day Care Workshops at the Community Resource Centre**

**Monday 29 June - 10.30am - 12 noon**

If you have ever wondered about what Family Day Care is, then here is your opportunity to find out. The workshop will cover the rules and regulations, what the family day care scheme is and the benefits plus first hand experience from educators. A light lunch will follow the workshop and all are welcome but you must RSVP Ashleigh on 9646 1600 or [beverleybulletin@westnet.com.au](mailto:beverleybulletin@westnet.com.au)

### **Westlink Broadcasts**

**\*\*New to Westlink\*\***

Friday 05 June - 3.30pm (30 minutes)

The Garden Guru's - Join Trevor Cochrane and the team as they give tips on feeding your plants to get better growth, introduce some plant varieties and give tips on growing veggies, amazing gardens and stunning plants. Contact Amor 9646 1600 or [beverley@crc.net.au](mailto:beverley@crc.net.au)

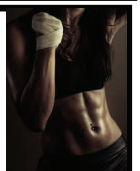
### **Mad Men's Muster 2015**

**Monday 24 August**

We are not giving too much away at the moment in regards to guest speakers but you will be surely impressed by the 2015 line up. The event will be free and there will be delicious food, plenty of laughs and yes once again it's a chick free event!! Be sure to reserve the date on your calendars and be set for another great day with the fellas.

## **GYM MEMBERSHIP**

**Gym memberships can be obtained from the Shire office or from**  
**[www.beverley.wa.gov.au](http://www.beverley.wa.gov.au)**  
**Beverley Gym, is located at The Old Courthouse, Vincent Street**



### Station Gallery

After such a hectic April, it has been relatively quiet on the home front during the month of May. The printing press we borrowed from C.Y. O'Connor Institute has been returned to Northam thanks to the generosity and muscle of Barry Knight and Fred Bremner - much appreciated.

Restorations to the Station building have not commenced as Shire is awaiting approval from the State Heritage Office, but it shouldn't be long now before we see some movement at the station!

It's a while since the railway carriage (ZJA Brakevan) at the Station got a mention. Much as we like the look of it in its distressed state, it is in need of restoration. If anyone in the community is interested in giving of their time (paid or voluntary) to restore the carriage guided by a conservation plan drawn up by an historian, heritage and museum professional some years ago, please contact one of the Station Arts committee, or leave your name and contact details at the Shire.



### Artist-in-Residence

Charlotte O'Shea has well and truly commenced the AiR (Artist-in-Residency) Grants Programme at the Beverley School which is funded by The Australian Government, The Australia Council for the Arts, Department of Culture and the Arts Government of Western Australia, Department of Education, Government of Western Australia, Artsedge. Artsedge grants offer schools the opportunity to work with artists across all disciplines of the arts. [www.artsedge.dca.wa.gov.au](http://www.artsedge.dca.wa.gov.au)



Australian Government



Department of Culture and the Arts

Department of Education

artsedge

Charlotte is being assisted by Jenny Broun and they are working with the school during terms two and three. The school art room is abuzz Mondays and Tuesdays as students from Pre Primary through to Year10 explore the theme 'Sustainability' through various art techniques involving model making, small sculpture, collage, painting and drawing. The students are collecting and incorporating recycled re-useable materials into their work. Thanks to the enthusiasm of the school community we can hold off on the donations of such materials for the time being - the art room stores are packed to the ceiling!

Many aspects of sustainability are being explored... sustainable power, water usage, fashion, building etc.

The artworks created will be displayed at the Annual Beverley Agricultural Show on the 22<sup>nd</sup> August 2015.

Monday after school art classes are also being held at the school's art room.

Charlotte is residing at the Shire house in Dawson Street for one or two nights per week, with painter Mandy Evans sharing the accommodation for the month of May, happily working from the residence.

For further information on residencies check with Artist in Residence Coordinator Marylou Hutchinson on 96471027 / 0427085511 or email: [hutchinson@wn.com.au](mailto:hutchinson@wn.com.au)

### ***Artists in Residence programme for 2015:***

June: Charlotte O'Shea - AiR at School

July/August: Charlotte O'Shea - AiR at School (Janet Pfeiffer postponed to April next year)

September/October: Charlotte O'Shea - AiR at School

October: (Sally Watts & 2 or 3 other visual artists postponed to April next year)

November: Hilly Coufreur - visual artist

December: Sue Brook-Roberton - visual artist



### Beverley Station Singers

The Station Singers have been invited to join the celebration of the inaugural Desert Heart Song Festival in the City of Kalgoorlie Boulder, Friday 14 to Sunday 16 August 2015 when choirs from around Western Australia will muster for a vibrant weekend of singing and friendship. This event is hosted by the Two Up Two Down Community Choir, based in Kalgoorlie Boulder. At this stage ten from Beverley will be heading to Kalgoorlie for a weekend of fun.

Two new members were welcomed at the last meeting and there is always room for more. Kelly Newton Wordsworth directs the group on a monthly basis (\$35pp) - the next meeting being Wednesday 10<sup>th</sup> June at 7pm in the Green Room of the Platform Theatre at the Station.

Anyone interested in joining the singing group contact Tracey Fleay- Mob: 0409 481 029 or E: [traceyfleay@hotmail.com](mailto:traceyfleay@hotmail.com)

### **Platform Theatre**

If any community group is looking to raise funds please keep it in mind that the Platform Theatre is available for events such as movie nights. With just a minimal hire cost of screen and projector, it makes for an easy fundraiser.

### **Calendar of Events:**

September: Saturday 12<sup>th</sup> - Country Choir Bash presented by Voice Moves.

November: Saturday 7<sup>th</sup> - Rolling Stones and Rock Montage Tribute

December Saturday 19<sup>th</sup> Family Christmas Concert

If you would like to be included on the email list for notification of coming events (so you can forward to friends), email secretary Sarah Miller [miller@reachnet.com.au](mailto:miller@reachnet.com.au)

### **Beverly Station Arts Membership**

To become a member of Beverly Station Arts Inc (Friend of the Station) please see Treasurer Pauline at the Newsagency, phone 96461042. Membership forms can also be downloaded from [www.beverleywa.com](http://www.beverleywa.com) (NB cheques to be made payable to Beverly Station Arts) and send to PO Box 112, Beverley 6304.

**The Station garden is available for public use at any time, just open the gates and enjoy!**

**Station Gallery Open Hours**  
(CLOSED TILL FURTHER NOTICE)

Jenny Broun, President, Beverly Station Arts: 9646 1500 / 0419 040 063 / [brounj@westnet.com.au](mailto:brounj@westnet.com.au)



I am writing to inform you that the Australian Bureau of Statistics (ABS) will be conducting address canvassing in the Shire of Beverley. This work is to develop the ABS Address Register, a comprehensive list of physical addresses and land use in Australia. The ABS Address Register will be used to support population statistics including the Census of Population and Housing.

ABS Officers will have official ABS field identification visible at all times. They will be walking and observing physical addresses and will not make contact with residents in private dwellings. At no stage will the ABS be collecting personal information. However, ABS Officers may need to approach businesses to seek additional information.

ABS Officers will be in the field between **May** and **September**.

If you have any questions, or would like additional information regarding the field exercise, the ABS is currently undertaking please phone the National Information Referral Service on **1300 135 070** Monday to Friday between 9am and 5pm (EST).

Kind Regards,

Paul W Taylor  
Director, Address Canvassing  
Australian Bureau of Statistics

## LEGO CLUB

Beverley CRC  
132 Vincent Street BEVERLEY  
Every Monday during the school term.

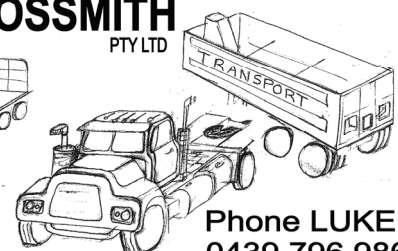
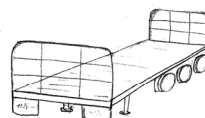
For children  
4 years and older.  
2.45pm - 3.45pm.

Cost \$2 per session.  
Afternoon tea provided



## M & L GROSSMITH

PTY LTD



- \* General Freight
- \* Hay
- \* Wool
- \* Sand Gravel
- \* Bulk Grains & Fertiliser

Phone LUKE  
0439 796 986  
9646 1983  
PO Box 342  
Beverley WA

# Natway Furniture & Constructions

ABN: 62 824 726 465

**Wayne & Natalie  
Ashworth**

Qualified  
Carpenter & Joiner  
Tradesman

- General Building Work
- Furniture Construction & Restoration

27 Brooking Street,  
Beverley

**Phone:  
08 9646 0159**

Mobile: 0417 973 415  
(Wayne)

Mobile: 0429 491 039  
(Natalie)

## Book Launch in Beverley

A very appreciative audience came to Linda J Bettenay's talk held at the warm and welcoming Beverley CRC on May 6<sup>th</sup>. Bettenay was the guest speaker and her topic found great resonance with this group of enthusiastic locals.

Bettenay revealed some background behind her newly released novel: 'Wishes For Starlight' - a story which resonated strongly with the audience. In her talk she explained how this story came from her father's and grandfather's memories and although it is historical fiction it's also grounded in factual events. The central character, Starlight, was a deaf mute Aboriginal, born in the 1890s in Canning Mills, Western Australia, a thriving timber town.

'Starlight was discovered living in a chook pen and fighting dogs for scraps by three remarkable children. Their actions result in the aboriginal boy being adopted by the community and over the next thirty years their friendship and loyalty enabled Starlight to survive in this time of prejudice and disadvantage,' explained Bettenay.

'Wishes For Starlight' is steeped in our pioneering history: when the orchards, the dams and the timber mills were being established, when typhoid epidemics threatened daily survival and fears of forest fires, destitution and starvation were very real. A time when the Zig Zag railway was built, the horse and cart reigned and barn dances provided entertainment,' Bettenay said.

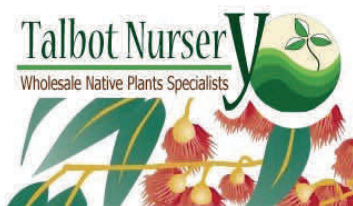
Bettenay has tied in many themes and events of the time into her novel; the difficulties of migrants, the challenges faced by women and the marginalisation of anyone who was not 'normal'. She explained that in this period 'The War to End all Wars' accounted for the loss and mutilation of many soldiers while also seriously impacting those 'left at home' but it also allowed for the blossoming of mateship.

The audience was also entranced by the unbelievable true story behind Linda's first book 'Secrets Mothers Keep' which occurred in Wubin and Dalwallinu.

Linda revealed how her husband Mike only recently discovered that his grandfather had been murdered and grandmother, mother and two aunts had been savagely assaulted and so unearthed a carefully kept secret that had existed in the family for over 80 years. She also explained how she had researched the story, discovering strange links across the globe which assisted her to develop a complex set of extraordinary characters and bring this pioneering yarn to life.

'I was impressed with the warm welcome I received. What an amazing group of supportive locals. Special thanks to organisers Amor and Ashleigh for their organisation and support. Sharing the joy behind my books is a fulfilling experience,' Bettenay said.

If you would like to know more about Linda's Books or for details on events or purchasing the book go to [www.lindasbooks.com.au](http://www.lindasbooks.com.au) or for details on the author tours visit her facebook page [www.facebook.com/lindasbookswa](https://www.facebook.com/lindasbookswa).



### Your Beverley Nursery

Native seedlings for revegetation,  
bush foods and plantations.

- ✓ Our website is now fully operational - order on line!
- ✓ Tree guards and fertiliser pills
- ✓ Tree planting service available

E-mail: [sales@talbotnursery.com.au](mailto:sales@talbotnursery.com.au)  
or phone/fax Lisa on 9646 1716.



# BEVERLEY MEDICAL PRACTICE

Providing quality health care to the Beverley community and surrounding areas.

The Beverley Medical Practice would like to welcome our newest team members:

**Lynley - Practice Nurse**

**Trish – Practice Nurse**

**Kristen – Medical Receptionist**

\*\*\*\*\*

## Doctors Availability

### Dr. Norah Kalibbala

Monday 9:00am – 4:00pm  
and alternate Thursdays  
10:00am - 4:00pm  
(By appointment only)

### Dr Olay Omoniyi

Monday 9:00am – 5:00pm  
Wednesday 9:00am – 5:00pm  
Thursday 9:00am – 5:00pm  
Friday 9:00am – 5:00pm  
By appointment only

### Dr. Remi Adebayo

Tuesday 8:30am – 5:30pm  
(By appointment only)

## Fees and billing arrangements

***Our Practice is Bulk billing all patients who hold a current Medicare card.***

Some procedures are not covered by Medicare and may be billed privately, these include heavy vehicle medicals, pre-employment medicals, some dressings etc. For more information regarding fees please discuss with our receptionist prior to consult.

**You must present your Medicare card, pension and other concession cards at every appointment.**

The Beverley Medical Practice is a private practice and therefore accounts are to be settled at the time of consultation.

We accept cash or EFT.

**All fees are charged at the doctors discretion.**

For more information visit our Web page - <http://beverleymedical.wix.com>

## Services available at the Beverley Medical Practice include:

- General Consultations & Care of Chronic Medical Problems
- Preventative Medicine & Medical Check-ups
- Pre-employment, Drivers Licence & Medical Examinations
- Women's Health & Family Planning
- Men's Health & Geriatric
- Shared Antenatal Care & Immunisation
- Travel Medicine & Vaccination
- Minor surgery including: Biopsies & Cryotherapy
- Pat forms
- Health Assessments.

*Allied health services provided in conjunction with Beverley Health Services and Wheatbelt GP Network include:*

Home and community care services, community child health nurse, Aboriginal health worker, nutritional advice, OT for school and community, visiting Podiatry, Optometrist, Diabetic clinic, Dietician, Physiotherapist and counselling services.

## **FLU SEASON IS JUST AROUND THE CORNER HAVE YOU HAD YOUR VACCINATION YET?**

**Results** - Your doctor will advise when they expect your results to arrive at the practice. Please call reception to confirm your results are available and make an appointment to review them with your Doctor.

**Home Medicine Review- are you taking more than 12 doses of medication a day, experienced a change in your medical condition eg: falls, cognition or physical function. Talk to your Doctor about a referral for a HMR.**

**Care outside normal opening hours** When the Beverley Medical Practice is closed you can always get medical attention by calling afterhours GP on **1800 022 222** or by attending the Beverley District Hospital, located in Sewell Street Beverley where experienced staff will triage the patient and contact the on call Doctor. **For all Emergencies call 000.**

### Beverley Opportunity Shop

The Hospital Auxiliary committee would like to thank all the people of Beverley who have been donating and continue to donate, to the Op Shop. Without you we would not be able to operate and offer affordable pre loved items for sale. Thank you also to the faithful customers who continue to support us, returning week after week for a bargain. Your money has been put to some very good causes.

So far this year funds have been made available by the committee to purchase 4 round dining tables for the Alex Miles Lodge. Approval has been given to purchase a wall mounted flat screen TV/DVD for the day room at the Hospital, 2 shower curtains, 1 each for the Hospital and Lodge, craft, games and pamper pack for use by the Occupational Therapist, teleconferencing equipment for the local primary health services e.g. Physio and Speech Therapists.

We have been extremely lucky to have received a considerable donation from the Morbining Catchment Group on their disbandment, plus we have also been the recipients of another very generous donation from an anonymous donor. These monies will go a very long way towards paying our weekly rental. Thank you to you all.

By working together we can continue to provide benefits to assist our local health system and ultimately our community.

### BILL CHAMBERS

**Chartered Accountant  
&  
Registered Tax Agent**

Tax return preparation

Financial and accounting  
advisory services

Office hours:  
Wednesday  
9.15am - 5.00pm

129 Vincent Street, Beverley  
9646 1566 (Monday - Friday)



## **THE RED VAULT**

*RESTAURANT/COFFEE HOUSE*

**Thursday 5pm-10pm**

**Friday - Sunday 9-30 am-10pm**

**FUN FRIDAY NIGHTS KARAOKE**

**FISH CHIPS AND SALAD \$15(EVERY FRIDAY)**

**BRING IN THIS ORIGINAL ADVERT  
BUY ONE COFFEE AND RECEIVE ANOTHER  
COFFEE FREE (BRING A FRIEND)**

CONDITIONS APPLY JUNE ONLY, NO COPIES ACCEPTED, COFFEE TO THE SAME VALUE, DINE IN ONLY

**NEW WINTER MENU COMING SOON**

**AFFORDABLE PRICES..... ALL WELCOME**

**CALL 96460008 115 VINCENT ST BEVERLEY**

## **SHAZMAC PLUMBING**

**PROUD TO BE YOUR LOCAL PLUMBER**

Plumbing Licence: PL 5829 Gas Fitter Licence: GF 7422 RHL: L100443  
ABN: 18 531 685 326

**For all your plumbing & gas fitting needs**

**Phone 0408 189 987**

**PO BOX 116**

**BEVERLEY WA 6304**

**shazmac1@westnet.com.au**

**NO job is too big or too small.**



## **CARPET & LOUNGE SUITE CLEANING**

***It's Spring Cleaning Time!***

- \* Carpets Cleaned
- \* Lounge Suites Cleaned Like New
- \* Car Upholstery & Carpets Cleaned
- \* House Total Clean When Moving
- \* Fire & Water Damage Clean Up

- \* Stripping & Sealing Floors
- \* Vinyl
- \* Wood
- \* Slate

Phone Colin Today on  
0417 971 786

Email [colgrant1@bigpond.com](mailto:colgrant1@bigpond.com)



## **“Talk to a Mate” Men’s Wellbeing WACFL Round**

The Regional Men’s Health Initiative partnership with the West Australian Country Football League (WACFL) to sponsor a round of football enters its second year. This partnership brings us into contact with 25 football associations and 150 senior country football leagues and helps deliver our key message to a younger demographic of men (predominately aged 16-40) throughout regional WA. The “Talk to a Mate” Men’s Wellbeing Round will be held over the weekend of 13<sup>th</sup> and 14<sup>th</sup> June 2015.

### **Why is this Important?**

It is important for us to talk about issues in our life and/or tell our story so we understand that we are not alone and that it is safe to chat. As blokes we quite often isolate ourselves and don’t talk to anyone about our stuff. One of the problems we have is we don’t identify who our true mates are in the good times, this can then lead to isolation and loneliness in bad times.

### **Who are our Mates?**

We say as blokes we have three broad categories of mates who we can talk to about our personal stuff. These usually come under the categories of a mentor, a partner or a peer. These mates are more often than not different from the associates and mates that we play sport with and/or socialise with. How many blokes do you know that have no one to talk to?

### **What is the benefit of talking to a Mate?**

It’s about sharing our story and realising the value of just

talking and in appreciating that there are other men out there experiencing similar things (we are not alone). I have never met a bloke yet that hasn’t wanted to tell his story (no matter what the issue) and sometimes we just need the right environment.

Men are hardwired to be “problem solvers” and we like to work alone. We often have an attitude that *if we disclose we have a few problems* someone will exploit our problem or weakness.

It is well known that problems shared are often problems halved. Helping men to overcome isolation (by disclosing issues) helps build resilience and can therefore lower the chances of us becoming completely overwhelmed when difficulties and disappointments head our way.

As men we need to encourage help seeking behaviour and be prepared to be the one to “Talk to a Mate” when we know he is down or experiencing difficulties. It isn’t rocket science and it does work.

“Talk to a Mate” Men’s Wellbeing Round will be over the weekend 13<sup>th</sup> and 14<sup>th</sup> June 2015.

Get down and support your local football team, become involved and remember ...before it all gets too much ... Talk to a Mate!!

Owen and the Team



# **Dawson’s Concrete & Reinforcing**

## **“Your Local Beverley Concreter”**

- **Concrete Formwork & Steel Fixing**
- **Driveways, Shed floors, Maintenance pits, Silo pads, Super sheds, House pads**
- **Fully mobile service**
- **Over 30 Years Experience**
- **7 Days A Week**
- **Professional, Reliable Service**

*Phone for a Free Quote*

**SANDY DAWSON**  
**Mobile: 0417 375 221**  
**Email: pameladawson@bigpond.com**



Unique Strokes W.A.  
Painting & Decorating  
Reg. No. 4236

ROB BAIN

QUALIFIED LOCAL TRADESMEN

For Guaranteed Traditional  
Workmanship & Prompt Free Quotes  
Phone: 08 9647 2102  
Mobile: 0418 904 013



**ChemDry**<sup>®</sup>  
*Drier. Cleaner. Healthier.*<sup>™</sup>  
Beta Finish



Superior carpet  
& upholstery  
cleaning

Freecall 1800 017087  
bettafinish@wn.com.au  
Fax 08 96225473

Pinefield's of York



Drafting and Design  
All Types of Building Construction  
Engineering Certification  
Energy Efficiency Assessment

30 Years experience  
in the Avon Valley

Gary Byfield  
0414 885 338

[gwb151@gmail.com](mailto:gwb151@gmail.com)

# Beverley Earthmoving Contractors

40 years experience in all aspects of Earthmoving.

**One stop shop for all your Septic Systems.**  
Supply & Install

Plumbing Licence PL 5829 Gas Fitting Licence GF 7422

## ALL ASPECTS OF EARTHMOVING

House Pads Site Cuts

Block Clearing Laser Levelling

Service Trenches

To Shire and engineer specifications.

## SAND SUPPLIES

Metal Gravel

## BULK HAULAGE

Truck and Dog Trailer Backhoe 315 SE John Deere

Side Shift Extender Hoe

Bob Cat Loader

Forklift Post Hole Borer

General Freight ingage and over width loads  
credited.

**Phone:**

**Ron 0429 088 689 or  
Lorraine 0488 087 316**

# BEVERLEY TRANSPORT SERVICE

Your local carrier for over 30 years.

**GRAIN, FERTILISER, LIME, HAY, WOOL AND  
GENERAL TRANSPORT**

**Agents for  
Optima Agriculture  
Supply and cart of Lime products**

**Garry & Sarah Miller  
Ph: 9646 4066 or 0428 464 066  
miller@reachnet.com.au**



**Valenti Lawyers** will be at the Quairading Community Resource Centre on Wednesday 24 June 2015 from 10.00am to 5.00pm to take instructions in relation to estate and succession planning, property and commercial matters.

Any person wishing to obtain advice in any of these matters should contact our Kim Valenti's personal assistant, Simone Poor, on (08) 9224 6222 to arrange an appointment or feel free to call in on the day.

Level 2, 130 Royal Street, EAST PERTH WA 6004  
PO Box 6661, EAST PERTH WA 6892  
Tel: (08) 9224 6222 • Fax: (08) 9224 6288  
[www.valentilawyers.com.au](http://www.valentilawyers.com.au)

**Beverley Community Information and Paralegal Services BCS**

By this time all the readers will be aware that the BCS office at the Town Hall will be closed. Our sincere thanks to all of the Shire staff for their support over the last 20+ years. A special thanks to our current CEO Steve Gollan and all the elected Councillors and indoor staff.

On community matters and issues, please look out for my car. Do not leave a message on my home phone. Witnessing of documents by a Justice of the Peace, I will do so on request. I have had discussions with Mr Steve Gollan regarding providing a service by a JP, the place, dates and time will be published in the July Blarney edition.

For witnessing of Court documents I will be carrying my stamp at all times.

Nuisance Calls: This month I have received some calls in the early hours, my phone has been monitored and the calls are being traced. It is an offence under the Federal Telecommunications Act and the local police will be handling the matter. Once the caller has been identified, due to the latest technology even if the phone rings for one or two seconds, the caller can still be traced.

Mal G Roberts.



**SUCCESSION PLANNING - A SERIES OF COMMENTARIES [3]**

You may recall that in our past commentaries I looked at the sensitivities of succession planning and the need to properly prepare for the process with the assistance of your accountant.

This commentary deals with the technical issues of transfer duty and landholder duty and how they impact upon intergenerational transfer of land assets and business assets from a farming perspective.

The *Duties Act 2008 (WA) (Act)* came into force in 2008 and brought with it a regime that broadened the revenue base for the State government in terms of the types of transactions that were captured by the Act and the duty payable thereon. However, one of the aspects of the old *Stamp Act* that was retained was the exemption from duty of transactions involving the transfer of farming land and assets from one generation to the next.

Under the Act, a transfer of land attracts transfer duty. Further, a transfer of shares in a land rich company attracts landholder duty. A company is land rich if, at the time of transfer of the shares, it owns land that has a gross value of \$2 million or more. In some instances, businesses attached to the land owned by the company and sold are also the subject of landholder duty.

It can be seen that a transfer of land between individuals or shares in a land rich company is likely to attract transfer duty or landholder duty subject to what I set out later in this commentary. Few farms in Western Australia would be worth less than \$2 million and thus landholder duty is, subject to what I set out below, relevant.

Notwithstanding what I have set out above, the State government recognised that to impose transfer duty and/or landholder duty upon a transfer of farming land and assets within a family would work against undertaking such intergenerational asset change and perhaps even the viability of agricultural pursuits in Western Australia.

To the end, the State government has provided an exemption from transfer duty and landholder duty in certain circumstances when the farming assets are transferred provided that the underlying use of the farming land and assets continue uninterrupted by the transfer and there is no such change for five years after the transfer.

Whilst it is an exemption, the transferee, who is liable for the duty, must provide certain information to the Commissioner of State Revenue before the Commissioner grants the exemption. Our experience shows that quite comprehensive requisitions can be issued to the taxpayer/transferee and a lot of time and effort is spent by the taxpayer and his or her lawyer and accountant in complying with those requisitions. However, it is important that the information requested by the Commissioner of State Revenue be made available to the Commissioner of State Revenue in order to receive the benefit of the exemption from duty provided by the Act.

In conclusion, it is clear that provided accounting and legal advice are received prior to any steps being taken to achieve a transfer of farming assets and, further, proper documentation is prepared by your lawyer, with the assistance of your accountant, the Act presents no real hindrance to the effective transfer of farming assets between generations.

Of course, if we can be of any assistance in relation to your succession planning, please contact us.

Kim Valenti  
Principal  
Valenti Lawyers

Liability limited by a scheme approved under Professional Standards Legislation.

Level 2, 130 Royal Street, EAST PERTH WA 6004  
PO Box 6661, EAST PERTH WA 6892  
Tel: (08) 9224 6222 • Fax: (08) 9224 6288  
[www.valentilawyers.com.au](http://www.valentilawyers.com.au)

**ARCHITECT AT LARGE**

Appointments 0429 421 287  
[rpecheva@rpearchitect.com.au](mailto:rpecheva@rpearchitect.com.au)  
[www.rpearchitect.com.au](http://www.rpearchitect.com.au)

New Houses | Additions & Alterations  
Live Your Dream Life | Love Where You Live

Professional Expertise & Personalised Service  
Accredited Design in the Central Wheatbelt

Rosalie  
Pech Eva  
Architect



# FAMILY DAY CARE WORKSHOP

**Monday 29 June  
10.30am - 12 noon**

**Beverley Community Resource Centre  
132 Vincent Street, Beverley**

The workshop will cover the in's and out's of running a Family Day Care, topics will include;

- ☺ What is a Family Day Care?
- ☺ What is a family Day Care Scheme & what are the benefits?
- ☺ First hand experience from educators
- ☺ Rules and regulations

A light lunch will be provided following the workshop.  
Please RSVP to Ashleigh on 9646 1600 or  
via email [beverleybulletin@westnet.com.au](mailto:beverleybulletin@westnet.com.au)

If you ever wondered about what Family Day Care is, then here is your opportunity to find out.  
All are welcome, but you must RSVP!



## Productive Partnerships



Summit Fertilizers  
1800 198 224



Elders Beverley  
9646 1008

At Summit we recognise the importance of relationships. That's why we work alongside Elders Beverley to bring you quality fertilizers and services.



## Cyanobacteria bloom warning for Avon River in Beverley

**25 May 2015**

The Shire of Beverley is issuing a warning for people to avoid contact with a cyanobacteria bloom that has formed in the Avon River in Beverley. The bloom is defined by a bright orange to yellow discolouration in the water.

Contact with, or ingestion of affected water may cause some ill health effects and skin irritation, we are recommending that recreational activities such as swimming, wading, playing and shellfish collection in the Avon River in Beverley should be avoided, particularly where discolouration is still visible". Fish and crabs are not affected by the bloom, but should be washed in clean fresh water and cooked.

In consultation with the Department for Health, the Shire of Beverley has placed health warning signs at the main access points leading into the affected waterway.

The Department of Water and the Shire of Beverley will continue to monitor the bloom at this location and provide advice on levels to the Department of Health.

Further information regarding blooms and recreational water quality can be found by visiting:

[http://  
www.public.health.wa.gov.au/2/639/2/environmental\\_waters.pm](http://www.public.health.wa.gov.au/2/639/2/environmental_waters.pm) at the Department of Health website.

For all your air conditioning needs contact:-

**Robert & Nathan Chamberlain**

**Avon Auto Air**

Phone: 08 9647 2070

Mobile: 0428 472070

We are now accredited and registered to install and commission **Split System Air conditioners.**



**CRANA Aboriginal Corp. Inc.**



In May 2015, another meeting of 50 Aboriginal elders and government ministers was held in Broome.

The main topics were:

- ⇒ Changes to the Australian Constitution, in regards recognising indigenous as the first people.
- ⇒ Land Rights
- ⇒ Culture
- ⇒ Identity
- ⇒ Native Title concerns
- ⇒ Health
- ⇒ Education
- ⇒ Housing
- ⇒ Closing Down of 170 indigenous communities.

Our PM Mr Abbott is firm on the mantra "changes to the constitution need a referendum, which, will be held at the next federal election", let's wait and see.

Current research in May 2015, 75% of Australians will support changes to the constitution as recognising indigenous identity in the Australian constitution as the 1st people.

One can only hope that justice is seen to be done for indigenous persons, thereby giving them some legal status, in the constitution.

Mal G Roberts  
Advocate

Mitch Henry  
President

**LEH Earthmoving**



**Little Eco Hill**



**Backhoe - Bobcat - Bulk Haulage**

Time to put that shovel down because guess who's back?

Dan the digging man!

- Experienced owner / operator
- Six wheeler tip truck and trailer
- Bulk Cartage including sand, gravel, blue metal etc. (supply and deliver)
- All aspects of sand pads (house, shed, water tanks)
- Site clearing and site clean-ups
- I dig holes and fill them back in again!

**DAN WILKINSON**

0417 093 090

9648 1006

PO Box 261 Beverley WA 6304

dan.zoe@bigpond.com

ABN: 76 315 246 782

**SUPER CHARGE BATTERIES**

**BEVERLEY TYRE SERVICE**

**City Prices**

**All Major Brands**

**Second Hand**

**Batteries, Repairs, Fitting and Balancing**



**Bridgestone Preferred Dealer**

**Open Saturday mornings, except long weekends**

**Ph/fax Alan on 9646 1607 or a/hrs 0428 129 575**

48 Dawson Street

(Old Telecom Shed)

**GOODYEAR**

**BRIDGESTONE**

**BROOKTON PLUMBING**

ABN: 37 675 595 336

**FOR ALL YOUR PLUMBING MAINTENANCE AND GAS FITTING NEEDS**

**\*PLUS SEPTIC WASTE REMOVAL**

**PHONE:**

**SEAN 0413 480 543 or  
NATASHA 0422 013 889**

**PL: 7130 GF: 006947 SWR: T235**



*Photo courtesy of Kai Photography*

### **Avondale Warden**

Work on the Avondale stable roof has now been completed and the tired leaky one is long gone. The place looks and smells amazing. The internal timber was oiled with a linseed base mix so it will keep the nasty termites away. It smells great and hopefully will outlast us all.

We have sadly said goodbye to the lovely Quilting ladies who were based out here at Avondale and have now moved into town, I will definitely miss having these regular visitors out here.

Avondale queries: Monica on 0427 477 734

### **Avondale Farm Project Associate (AFPA)**

#### **AFPA Clydesdales**

The beloved AFPA Clydesdales have had a rather busy past couple of weeks with vet visits. Robbie who feels he needs to be in the spotlight all of a sudden, has been suffering from stiffness on the rather cold and windy mornings and nights. He is getting a bit of arthritis poor old chap. He has also been diagnosed with ocular squamous cell carcinoma and it's in both of his eyes. This is usually only in what they call the 3<sup>rd</sup> eye lid but for him it's also in the lower eye lid and part of his eye ball. Sadly at this stage it looks like it's inoperable and will need some form of treatment. Comet also has this cancer, but it's only in his left eye and only the 3<sup>rd</sup> eye lid which can be operated on. The boys will be taken to the vet again on Tuesday 26<sup>th</sup> May when we will get a prognosis and some options around a management plan. We will keep everyone updated on the progress after the vet visit.

Over these past couple of weeks a lovely lady from our community has come to the rescue transporting the boys down to Belvoir Equine Hospital in the Swan Valley. AFPA would like to acknowledge Pauline Appelbee who has donated her time, horse truck and fuel towards transporting these two rather large boofheads to the vet. Thank you so much Pauline, your support has been invaluable.

AFPA would also like to give a big thank you to Avondale Warden Monica Van Der Snoek, and to committee member Mitch Kerr and her mum Kath who have all spent many hours looking after Robbie and Comet. AFPA would like to acknowledge Monica's offsider Erin who has helped make sure that Comet does not steal Robbie's medicated feeds at night. The boys now have their winter PJ's on every night which will hopefully help keep them nice and warm.

#### **AFPA Cake stall.**

On Saturday, June 13<sup>th</sup> we will be holding a cake stall next to the IGA to help raise funds for the ongoing treatment of our two lovely clydesdales. Any donations will be greatly appreciated. Please call Mitch Kerr on 043 992 7724 or Monica 0427 477 734 if you are able to help out. Any form of donation will be greatly received. We will have a raffle for firewood and another raffle for a lovely horse head statue that has been donated to us.

#### **AFPA Battery Drive**

We are also seeking old truck, tractor and car batteries which may be cluttering up your place. This is a 2<sup>nd</sup> fundraiser which we will have going for Robbie and Comet's treatment. We know this is a busy time of the year for all the farmers in the area and AFPA will arrange to pick them up from you.

#### **Opening Hours**

AFPA Volunteers will be opening Avondale on the West Australia Day long weekend May 30 and 31 and on the Monday June 1. As usual, we will also be open on the third weekend of June which is June 20 and 21. Opening hours are 10am to 4pm each day. Come out and have a look around, we are just 6kms out of town on Waterhatch Road. AFPA volunteers look forward to meeting you.

AFPA queries: Jo on 0417 951513

Avondale Farm  
550 Waterhatch Road, Beverley



## THE BLUE LINE

### Beverley Police Station

57 Hunt Road, Beverley WA 6304

Phone: 08 9646 3333 Email: [beverley.police.station@police.wa.gov.au](mailto:beverley.police.station@police.wa.gov.au)

#### Hello Everyone

Ugg boots. Onesies. Dodgy beanies. Flannos on top of flannos. Yes, winter's here and with the onset of the cold comes some dodgy fashion choices, and all the above are just me (except for the onesie, I don't possess one, honest). Speaking of the weather, well done to Ali Lewis for winning the prize of a slice of chocolate cake for getting the answer to my pop poser last month. 'Always take the weather with you' by Crowded House was what I was prattling on about. When I finally get around to actually providing the cake to her I'm sure she'll confirm how nice it is.....

#### What's been happening ????

I know I often say we aren't in the middle of a crime spree and this has been confirmed this week by the latest Wheatbelt District crime figures. Due to many factors, not least the community cooperation we've had, our sometimes 'intrusive' approach to crime prevention and detection and sheer hard work by everyone, we've managed to reduce crime in our little bit of the world by 44%. This is the best in the Wheatbelt and as a community we can all take credit for this so I reckon we all need a pat on the back. Whilst I don't really like throwing statistics around I can also tell you that we are, on a jobs per officer ratio, the busiest police station in the Wheatbelt (the bags under my eyes are proof of that !!!).

As for actual crime itself, we've had very little over the last few weeks. We are investigating a few protracted incidents which are taking up some of our time but for sheer numbers we are well down.

Still, despite all the above, we still can't rest on our laurels. We have to remain vigilant and look out for each other and let us know when something concerns you, We are all ears !!!!

#### Off road motorbikes

Oh dear, where do I start? This issue has kept us on our toes recently. According to some who've been in Beverley much longer than I have, this problem has been going on since 1984. The sound of noisy 2 strokes has been in my head like an annoying buzzing fly. I fully appreciate that these machines are great fun but with ownership comes responsibility. Basically, if anything is deemed to be a road then you can't ride on it without the bike being registered and you must wear protective equipment. The problem is sometimes it isn't

obvious what a road is (by definition) and that's where we have an issue. I'm making a few enquiries into where and when people can ride and I promise I'll get back to you when I have an answer.

As a side note, if you are going to ride your bike (in the right places) then please be careful. Almost 12 months ago I went to a fatal accident in York involving an off road motorbike and more recently we had the tragedy at the motorcross track. Off road bikes can be and are dangerous so I don't need to state the obvious do I ????

#### Scams

Here goes for a bit of cut and paste :- once again, please keep an eye out for scams, particularly email ones. Don't click on anything you think might be iffy, instead either contact us or contact Scamnet on [http://www.scamnet.wa.gov.au/scamnet/About\\_WA\\_ScamNet-Contact\\_us.htm](http://www.scamnet.wa.gov.au/scamnet/About_WA_ScamNet-Contact_us.htm) .

The latest one is an email which purports to be from the Australian Federal Police and demands (in shocking English) that you've been issued with a traffic infringement. Don't whatever you do click on the link in the email, it'll goose up your computer (that's a technical phrase). The AFP never send out emails like that and even if they did they'd use correct English (you would hope).

#### Gotta dash.....

Yes I'm late again with The Blarney so I've got to click send soon.

If you need a laugh then let I'll let you into a bit of news. Nick and I have noticed our trousers seem to have shrunk, particularly the waistband. As a result we've entered ourselves in the City to Surf run on August the 30<sup>th</sup>. So, if you see us lugging our substantial frames around please don't throw pies or doughnuts at us, they'd only distract us. Disparaging comments I can take but as is obvious I'm keen on anything wrapped in pastry. We'll keep you updated on how our training is getting on. So far it's going great, Nick managed to run 4kms around town and I managed to put my running shoes on so yeah, we're travelling well.....

Take care everyone, I'm off to have my eyes tested and to think up some more excuses why I can't go out for a run.....

Ian & Nick.

Thank you to the people of Beverley

G'day the good folk of Beverley. I would like to pass on the thanks and gratitude of me and my new wife, to you, the friendliest place in WA. We can hardly put into words, the welcome and hospitality we were afforded by everyone we came across. I know it can't have been easy, what with, not only it being another couple of Poms moaning about the heat and the spiders, but, more importantly, Ian Connell's brother.

We met some fantastic people, ate some fantastic food, drank some (lots) of beer, and, more importantly, felt like we belonged. Added to this, we had all of our wedding photos taken in your beautiful town, something that really touched Kate (the latest Mrs Connell), as she is from Beverley, United Kingdom.

Once again, and finally I hear you say, many thanks to the good people of Beverley. You helped make our holiday that extra bit special. Oh, as a final final note, the weather was fantastic while we were over there, regardless of what some might have said. All the best, and hopefully, see you all again soon.

From Andrew & Kate Connell.



# FREEMASONS TAVERN

104 Vincent St, Beverley

Phone: 08 9646 1094



## WHAT'S HAPPENING AT THE TAV

### Live Band - Double Dragon

Friday 12 June

Grab your mates for a great night out!!



### Wednesday's - Pick a box



Due to it's success we are running pick a box on Sunday's too.

### Thursday Night's - Cash Cow

Jackpot \$550, increases weekly by \$50 until won.

### Sunday's - \$12 Meal Specials

Steak & Chips, Fish n' Chips or Roast.

Want more???? Check out our new wine list or the new big screen TV.

Say Farewell to Kerry on Sunday 14 June



## C & B TRANSPORT

DELIVERING GENERAL FREIGHT AND CHILLER GOODS

3 DAYS PER WEEK OR AS REQUIRED

TO

**BEVERLEY, BROOKTON, PINGELLY**

FROM

**PERTH DEPOT CANNINGVALE MARKETS**

PLEASE CONTACT PAUL BALDWIN

ON

**0417 953 968 or 08 9646 0461**

**BIG ENOUGH TO DO THE JOB SMALL ENOUGH TO CARE**

# Beverley School News

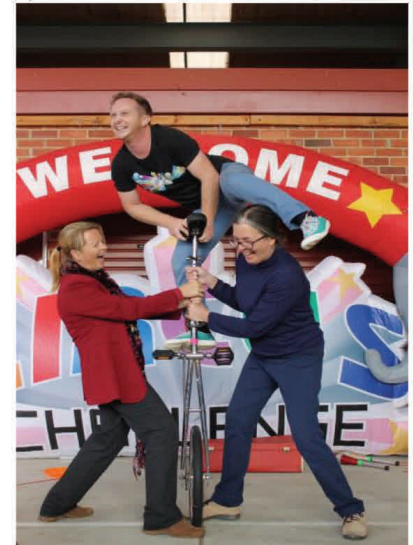
It has been a particularly busy and entertaining month at Beverley District High School. Thank you and congratulations to Mrs Murray and her helpers, parents and community volunteers, and especially our fantastic students on all their lion-hearted efforts in our cross-country carnival, held in fine but windy conditions on 17 May.





## Circus Challenge Fun Day

All our students enjoyed watching and participating in the Circus fun day, and practised their co-ordination and performance skills to demonstrate that they're really all just clowns at heart.



## Scitech Incursion: Beyond the Beaker

Year 6 to 10 students took part in an interactive science session, and learned about how science can lead to rewarding careers in a range of areas.



## Pre-Primary Mothers' Day Afternoon Tea

Our pre-primary mothers and grandmothers took the opportunity to relax and enjoy some TLC provided by the pre-primaries and their teachers.



**Max Hunter's  
Firewood Supplies**  
Ph: 96461 236



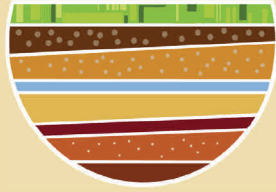
The Jarrah Bush Wood  
is sold by the tonne.  
Delivered in truck or  
trailer loads.

## WG CEILINGS

*Specialising in:*

- Gyprock Fixing & Flushing
- Cornice Installation & Repairs
- Sagging Ceilings & Removal
- Cracks in Ceilings & Walls
- General Flushing & Repair Work

**Phone Wayne Giesemann**  
**0413 091 109**



## Talkin' Soil Health

Unearthing profits

When: 10-11 September 2015

Where: Kojonup, WA

**DOB  
IN A  
MATE**

### SOIL HEALTH CHAMPIONS 2015

Help us find the  
farmers who are  
managing profitable  
and healthy soils

Four winners will be chosen to receive a prize  
– one from each participating NRM region\*.

Finalists will be able to attend the Talkin' Soil Health Conference  
at Kojonup – all expenses paid. A short film featuring all finalists  
will also be shown at the event.

**Dob in your mate or nominate yourself.**

**Nomination form:** [www.talkinsoilhealth.com.au](http://www.talkinsoilhealth.com.au) Closes: 16th July 2015

\* Northern Agricultural Catchments Council, Southcoast NRM, South West Catchments Council, Wheatbelt NRM

[www.talkinsoilhealth.com.au](http://www.talkinsoilhealth.com.au)



# Beverley Playgroup Inc.

**Come along Thursday mornings from 9.30am at our new venue.**

- **We are now located at the Amenities Building at the Beverley Oval.**

All children 0 - 4 years old and their carers welcome.

Bring a hat, sunscreen and a piece of fruit to share.

Yearly fees (one off):

\* Normal \$30 insurance + \$5 rental contribution

\* Concession card holders \$15 insurance + \$5 rental contribution

Weekly fee - \$4/family

More information contact Hollie: 0409 299 089

Proud member of  




June...halfway through the year and the start of winter. With the cooler temperatures you may notice a decline in pasture growth rates. It may be necessary to move stock from paddocks with low levels of food on offer (FOO), to protect these from overgrazing and ensure good growth rates in spring. In some cases supplementary feeding may be required.

Stock with young will also need to be monitored to ensure they have access to plenty of shelter during inclement weather, this will reduce the risk of animals getting hypothermia. If stock are in an area prone to flooding, waterlogging or without natural or manmade shelter consider moving them if severe weather is forecast.

Now is a great time to clean up your orchard. As the last of the apples are harvested, ensure you pick up any unwanted fruit and start spray programs to reduce carryover of fungal, bacterial and mite issues. Start pruning stone and pome fruit once the last of the leaves have fallen. Leaf fall can be hastened by use of appropriate nutrient foliage sprays.

Damper weather might lead to food spoiling quicker, if you are finding that food is spoiling before you get to use it consider preserving, drying, freezing, cooking or juicing your fresh produce. This will help you save money, reduce throwing out food and enable you to take advantage of seasonal fruit and vegetables.

The best time to plant deciduous fruit trees, like apples, pears and stone fruit, is when they are dormant, in winter. Evergreen fruit trees, like citrus, avocados and olives, establish well when planted in autumn, so they have three seasons to develop their root system before the heat of summer.

Slaters are a beneficial creature in the garden however when their numbers explode they can cause damage to your plants. To keep slater numbers to a reasonable level use minimal compost and remove objects which give shelter, such as empty pots and stacks of timber. You may also want to consider putting traps out near vulnerable plants, by hollowing out an orange halve or filling a pot with potato peeling this can lure slaters away from young plants. Or provide a protective barrier by making a collar out of the empty pots.

Our seasonal e-newsletter keeping you on top of what you need to know for the coming season will be emailed out in May. Sign up now at [agric.wa.gov.au/small-landholder-information-service-e-newsletter](http://agric.wa.gov.au/small-landholder-information-service-e-newsletter) to start receiving your copy.

For more information on other small landholder events, visit our SLIS Facebook page ([facebook.com/DAFWAsmalllandholders](https://facebook.com/DAFWAsmalllandholders)) or website ([agric.wa.gov.au/slris](http://agric.wa.gov.au/slris)). Until next time, Jodie.

## 2015 RAC Wheatbelt Regional Netball Carnival

The Beverley Junior Netball Team proudly represented their town on Sunday 17 May playing in the 12's and under division at the Northam Recreational Centre.

The girls played Cunderdin, Corrigin, Quairading, Northam and Kalamunda unfortunately they did not make the finals but they had a great day playing netball with many laughs. Congratulations to all of the girls.

The event sponsor was the RAC Elephant in the Wheatbelt a road safety campaign targeting the issue of too many lives are lost on Wheatbelt roads. The club will be brainstorming ideas for a grant application to assist in raising awareness of this growing problem.

*Pictured below, left to right: Kana Moulton, Rebecca Grover, Annie Mellick, Abbey Cooke, Kasey Ashworth, Jessi Kady, Rachel Webb and Kia English with The Elephant in the Wheatbelt*



**USE A MUFFIN TIN TO SERVE  
CONDIMENTS AT A BBQ**



**(IT WILL ALSO HELP YOU CUT  
DOWN ON DISH WASHING)**

**PUT PANCAKE MIX IN A  
KETCHUP BOTTLE FOR A NO-  
MESS EXPERIENCE**



**VALLEY  
FORD**

• NEW & USED VEHICLES •  
• SERVICE & PARTS •

**9622 5588**

[www.valleyfordnortham.com.au](http://www.valleyfordnortham.com.au)

Cnr Peel Tce & Fitzgerald St, Northam

## Healthy Body – Healthy Mind

By Valerie Gunsch

Dip. C.N.C. Mac. H.V. P.P.

Clinical Nutritionist, Profemme Practitioner

Email: [healthylivingbev@westnet.com.au](mailto:healthylivingbev@westnet.com.au)

Our topic for this month is juicing. Let's get you prepared for a lifetime journey to successful juicing. This page is for you if you are new to fresh fruits and vegetables juicing. Once you understand the true benefits of juicing you are ready to begin. Take heed of the following juicing basics to see the marvellous effects juice will have on your overall health:

There are basic things you need to know about juicing before you can start. I will explain the first steps, the important facts, the juicing basics. Juicing is about a changed lifestyle that you choose, towards a new and healthier you. Juicing can add some variety to your diet while helping you get more of the necessary nutrients from fruits and vegetables. Investing in a juicer is obviously necessary. There are many different machines available depending on what you can spend. A good juicer can cost you a few hundred Dollars however the initial amount you spend will be a great investment in your health. On the internet you can find a lot of information and juicers in all shapes and sizes. In our household we use the Vital Max Oscar 900; this is a masticating juicer, very powerful, quiet and easy to clean however it is on the expensive side. So you have to find the one which suits your budget. We have discovered a great store in Perth, where we go since years to buy all our kitchen gadgets. The name of the business is *WA Hospital Supply in Balcatta*. The service and knowledge is first class. Visit the store and I am sure you will not be disappointed (by the way we do not receive any commission for mentioning this place) but it is very rare to find good service today. So go and have a look and tell me I am wrong! A juicer works by using special blades, which chop up your fruits or vegetables into tiny pieces and spin them in a way to separate the juice from the pulp, which eliminates the majority of the fibre.

There are many healthy benefits of drinking fresh juice and it is a great way to add nutrients from the fruits or vegetables that you normally wouldn't eat. Juices retain most of the vitamins, minerals and plant chemicals (phytonutrients) that would be found in the whole versions of those foods. It is easy to make fresh juice at home with a juicer. Valuable compounds called flavonoids and anthocyanins are abundant in a variety of fruits and vegetables and guard against oxidative cellular damage. Damages to your cells are the cause of so many illnesses. However, beware of the claims that juicing is the only way to stay

healthy, that you should avoid solid foods, or that juicing is a substitution for a medical diagnosis or treatment. There is not much research out there that proves that juicing is healthier than eating the whole thing. However, juicing does make them easier to consume on a regular basis and they are easy digested. Unlike food, juices are for the most part, digested and absorbed in the stomach. They are fantastic for people with digestive problems because the digestion is actually being done for you. Provided that you can drink and absorb water, you can drink and absorb fresh juice. Green juices are the most nutritionally potent, so it is good to develop a taste for them! Initially though, for the beginner, they can be a bit daunting because we are not exactly used to drink bitter green juice. It is nothing wrong if you add one small piece of fruit, maybe a little pineapple, or an apple or pear, only small pieces, you can also add some sweet vegetables such as beetroot and carrot.

Although this will give you a juice that has a higher glycaemic index, which is not ideal, but it will help you to get started. You can then gradually reduce the quantities of these ingredients as you progress, until your taste buds adapt to the green juice 'straight'. It takes only a couple of weeks or so to actually change your tastebuds. You are aiming for straight green juice. You can live on juice alone for a period of time but ultimately we have a digestive system that is designed to eat food and not just juice, and we need some fibre to make the digestive system work properly. Children thrive on nutritionally dense juices; there are no contraindications for giving juices to children. However in the beginning, diluted 50:50 with filtered water makes sure, juices do not cause a spike in blood sugar levels and therefore an insulin surge. By getting them into juicing, you can be sure that you are setting them up with a fantastic health-habit that will give them a stronger immune system, more energy and better concentration. What could be better?

I generally recommend that if you are only juicing once a day, you do it first thing in the morning and have that juice as your breakfast (or, for athletes and 'fast-burners') first thing in the morning, than breakfast. This routine fits easily with most people's daily routine. If you are facing serious health challenges, and are juicing 2 or 3 times daily, I suggest that you do wheatgrass at 8 am, then green juice at 9am, then green juice again at 11am, then green juice again at 4pm. Try to change the greens for different juices. Drink your juices away from your meals by having them at least half an hour, better one hour before eating. When making your own juice, try to make only as much as you can consume at one time. Start with making a small amount and increase the quantity after you have got

used to the taste. Don't store your juice for hours in the fridge, they will deteriorate quickly and this would be a waste. Juice that isn't consumed right away can harbor bacteria and cause food poisoning. Exposure of the drink to air, bacteria and other pathogens can not only make you sick but threaten the nutritional value of the juice as well. Also, before juicing wash your hands; clean your fruit/vegetables thoroughly to remove any dirt, pesticides or bacteria. I strongly advise you to use only organic fruits and vegetables. You don't want to have pesticides and chemicals with your juice. Make sure your cutting board and utensils are clean as well and use one board for cutting up fruits and vegetables only. Don't ever use the board where you cut your meat, cheese or other produce. Cross contamination can be deadly, so be very careful and clean when preparing your juice. Start slowly with juicing; try it perhaps once or twice a week in the beginning. Observe how you feel after a glass of juice. Your tastebuds will let you know. Personally I like to have a juice every day. Make most of your juice as green as possible. I always have Kale, spinach, chard, celery, some cabbage leaves red or green, ginger and only half a piece of fruit. Bananas are not good for juicing; however Grapes are very nice, throw in the one with the seeds, grape seeds are very nutritious. If using citrus fruit peel only the outer skin, the white part is highly nutritious. You do not want too much of sweetness in your juice because it might increase your blood sugar level. So make it green – remember green is clean! Sometimes I start in the morning with a green juice such as Wheatgrass or Spirulina; it gives me such a boost right in the early morning. Sometimes I have juice in the afternoon, a beetroot, carrot, mint and ginger replaces very often a cup of tea when my energy is lower. There are wonderful books around on juicing and on the internet you get heaps of free ones. So please try it, it will do you really good. And if you can not afford a good juicer right now, you can throw all ingredients in your blender, add a bit of water (1/2 cup) and blend it on high for 30 seconds (not longer otherwise your juice heats up and the goodness is gone), strain it through a cloth or milk bag, squeeze out the juice, pour over some ice cubes and enjoy. See Recipe Corner for some Juice ideas.

Happy Juicing  
Valerie Gunsch

## Recipe Corner

Supplied by Valerie Gunsch

E: [healthylivingbev@westnet.com.au](mailto:healthylivingbev@westnet.com.au)

### Juice No 1

2 carrots unpeeled,  
1 small beetroot unpeeled,  
2 apples unpeeled,  
1 celery stick,  
1 orange peeled,  
1 cm slice of ginger peeled.

Feed the vegetables and fruit through a juice maker. Pour juice over crushed ice and serve immediately.

### Juice No 2

1 medium orange, peeled and quartered  
3 kale leaves including stalks  
1 medium carrot, unpeeled  
1 large beet unpeeled and cut into wedges to feed through the tube  
1 cm piece peeled fresh ginger  
Ice cubes

Feed through the tube, pour over ice if desired and serve immediately.

### Juice No 3 Healthy Green Juice – my favourite!

2 green apples, halved  
4 stalks celery including leaves  
1 cucumber  
6 kale leaves  
½ lemon peeled  
1 inch piece fresh ginger peeled

Feed through the tube, pour over ice if desired and serve immediately.

GJ & VJ SEEBER  
trading as

# BEVERLEY GAS & PLUMBING SERVICES

Established in Beverley since 1997  
Your Local Licensed Plumber and Gas Fitter  
Servicing Beverley & Surrounding Districts

## PLUMBING

- ★ ACCREDITED WATERWISE & ENVIROWEST PLUMBER
- ★ SEPTIC INSTALLATIONS
- ★ SEWERAGE CONVERSIONS
- ★ MAINTENANCE & INSTALLATION of all PLUMBING REQUIREMENTS
- ★ INCLUDING BACKFLOW INSTALLATION and TESTING
- ★ NO JOB TOO SMALL OR TOO BIG
- ★ HOLDS CLASS 'A' PLUMBERS LICENCE

## GAS FITTING

- ★ LICENSED (UNRESTRICTED) GAS FITTER for all ASPECTS of gas
- ★ MAINTENANCE and INSTALLATION

Mob: 0418 929 141  
Fax: 9647 2109  
Tel: 9647 2115 (after hours)

Water Auth Lic No. PL216  
Gas Lic No. 386  
Back Flow Lic. 103



## York Chiropractic

MacLachlan Centre – 4 Trews Road



Clinic available every week

**9641 1500**

Dr Alexandra (Sacha) Browne

*B.Sc (Chiropractic) B.Chiropractic*

Dr Liam Welfar

*B.Chiro (Hons) B.Sc (Chiro) B.Sc (Env. Health)*



Also available in Cunderdin and Merredin



# David Johnson

PH; 0428 995 950 Or Email [johnno\\_d@hotmail.com](mailto:johnno_d@hotmail.com)

For all your bulk haulage needs : Lime, Fertiliser , Grain  
Side tippers, Flattops, Container cartage!  
You name it, I'll cart it!

Supporting locals from Beverley and surrounding areas!



# Anglican Parish Beverley/Brookton

Times for services for:



June 2015

Date	CHURCH LOCATION	TIME	SERVICE
Sunday 7 June 2015	St Mark's Brookton	8.30am	Holy Communion
Sunday 7 June 2015	St Mary's Beverley	10.30am	Holy Communion
Sunday 14 June 2015	St Mark's Brookton	8.30am	Prayer, Praise & Proclamation
Sunday 14 June 2015	St Mary's Beverley	8.30am	Prayer, Praise & Proclamation
Sunday 21 June 2015	St Mark's Brookton	8.30am	Holy Communion
*Sunday 21 June 2015	St Mary's Beverley	10.30am	Holy Communion
Sunday 28 June 2015	St Mark's Brookton	8.30am	Prayer, Praise & Proclamation
Sunday 28 June 2015	St Mary's Beverley	8.30am	Prayer, Praise & Proclamation
Sunday 05 July 2015	St Mark's Brookton	8.30am	Holy Communion
Sunday 05 July 2015	St John in the Dale	10.30am	Holy Communion



## CATHOLIC CHURCH

Service in Beverley  
8:00 am every Sunday at  
Beverley Sacred Heart Church  
Lukin Street, Beverley



## THE RELIGIOUS SOCIETY OF FRIENDS (QUAKERS)

Beverley Friends Meeting  
Old Catholic School Rooms  
Dempster Street

**Sunday 10:30am -**  
Meeting for Worship

For more information & enquiries  
phone 9646 0575.

*\*This Sunday will be the last time Rev'd Carol Whitcombe will celebrate at St. Mary's before she retires on 12th July.*

*All are welcomed to join for this service and for a bring and share lunch to follow.*



Telephone contacts: Beverley - 9641 6023 or 9646 0522. Brookton - 9642 1373 or 9642 2357

Parish correspondence to: P.O. Box 292, Beverley.

All mail for St. Mary's Society please address to: **P.O. Box 292, Beverley.**

### BEVERLEY CHRISTIAN FELLOWSHIP

Bible study  
Monday evening at 7.30pm  
Followed by supper and a time  
Of caring and sharing fellowship  
Place alternating homes

Visiting Pastor from independent  
ministries  
SWOT (South West Outreach Team)  
1st Wednesday of the month  
10.00am  
Place 16 Barnsley Street, Beverley

Enquiries  
9646 0282 or 9646 0546

### BEVERLEY HOME CHURCH

Meet 1st and 3rd  
Saturday of each month  
Meeting at 3.30pm  
Fellowship meal at 6.00pm  
Followed by a games night  
Place 16 Barnsley Street,  
Beverley

Enquiries - 9646 0546



The Church of  
United Spiritualism

Please contact Rev Irene  
on 9646 0470 for details.

### DRUG & ALCOHOL COUNSELLING

The Wheatbelt  
Community Drug  
Service Team will  
be visiting  
Beverley Hospital  
fortnightly.

For appointments please phone  
Jackie Darby on  
96211 055.

## **Meals on Wheels**

### **Roster for June 2015**

Jun 01 **Public Holiday**  
Jun 02 R & G McCallum  
Jun 03 E & N Murray  
Jun 04 G Roache/B Wauchope  
Jun 05 B Foster/N Darr

Jun 08 A Elston/K Badger  
Jun 09 S Eramiha/G Redding  
Jun 10 D Strange/ S Negus  
Jun 11 D & E White  
Jun 12 J Johnson/M Smith

Jun 15 P & K Smith  
Jun 16 B Sims/D Ormorod  
Jun 17 G Courtney/M Alford  
Jun 18 B & J Howell  
Jun 19 A & K Boyle

Jun 22 E & N Murray  
Jun 23 R & G McCallum  
Jun 24 B Foster/N Darr  
Jun 25 G Roache/B Wauchope  
Jun 26 D & E White

Jun 29 A & K Boyle  
Jun 30 S Eramiha/G Redding

Do you want to volunteer?  
We are always happy for  
new volunteers to join  
our crew.  
Contact 9646 3200



## **BEVERLEY DIABETES SUPPORT GROUP**

Meets at the O.T. Room, Beverley Hospital

**WHEN: 2.00pm til 4.00pm**

The support group will meet every second Tuesday of the month.  
Contact Sylvia Seddon on 9646 1072  
Type one and two diabetics of all ages are encouraged to attend  
as well as other members of the public interested or suffering from diabetes.  
Please park on the road or behind the St John Ambulance Centre.

## **BEVERLEY CHILD HEALTH CLINIC**

Clinic is open Fridays for appointments, home visits  
and/or immunisations 9am to 4pm.



For appointments or enquiries please phone the  
hospital on 9646 3200 or 0427 901 321.

LISA WAY — Child Health Nurse



# **Dead Finish Museum**

*A collection of historical memorabilia*

**Open Sundays 11am to 3pm**  
**March to November**

## **BEVERLEY REAL LIFE CHURCH**



*Doing  
Life  
With  
Christ*

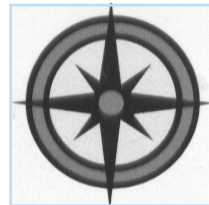
**10am  
SUNDAYS**

Meeting in the old Oasis church building.

**50 Hunt Rd, Beverley**

***Bring and Share lunch –each week***

All types



All areas

## **ALLROUND CONCRETE**

**SHED FLOORS, DRIVEWAYS, FOOTPATHS, HOUSE SLABS,  
SILO PADS, FERTILIZER/GRAIN/SUPA SHEDS**

**ROBBIE HIGGINSON**

**MOBILE: 0427 384 977**

**HOME: 9641 2459 FAX: 9641 2339**

**ABN: 26 997 512 874**

**PO BOX 345 YORK WA 6302**



# Beverley Playgroup

We are a fun place for babies and children aged 0-4 years old to come and meet new friends, learn from each other, problem solve, play with new toys and equipment, practise their social skills and learn the meaning of 'share'. It's not all about the children though, it's great for the adults to socialise, share tips and enjoy a cuppa as well. We are always welcoming new members. You are entitled to 3 free sessions before joining as a member. Children don't have to be brought in by a parent, it can be a grandparent, aunt etc. New members are always welcome!!

## **We have been busy the last couple of months...**

The kids have been busy, doing a lot of painting lately! Painting pots that were sold at our street stall, painting mini boxes as a Mother's Day gift and painting butterflies for the show mural. They have also made beautiful window art with pressed flowers for Mother's Day. And have been getting outside to use some of our brand new equipment for activities such as sack jumping, egg and spoon balancing, ten pin bowling and target throwing. As per usual the blocks, cars, drawing, gluing, puzzles, dress ups, bikes and ride-ons, see-saw and the big playground have been popular! The Mums, Dads and Grandparents who come along have also enjoyed meeting new friends over a cuppa.

### **Easter**

We had great morning, finishing off our Easter egg baskets and then some dancing. While we were busy dancing, the Easter Bunny visited us and left us lots of Easter Eggs to find in the playground. Lots of very excited squeals were shortly followed by absolute silence as the Easter Eggs were enjoyed.

### **Car Seat Checks**

During March we had a visit from Elouise Hawkins & colleagues (Wheatbelt Health Promotion Officers) to conduct free safety checks of baby and child car seats. These were very comprehensive checks that took about 30 minutes per seat! Straps were tightened, suggestions were made and some seats were re-fitted so they complied with their car regulations. Thank you for coming to Beverley Playgroup Elouise & team.

### **Lotterywest Grant**

A few people to thank here.... Starting with Lotterywest, for awarding Beverley Playgroup the grant money to buy much needed new toys and equipment. To Jenette Loud for completing and submitting the application, and to Hollie Smith & Narelle Bailey for spending the money on behalf of Playgroup. Not an easy task when your shopping list is so long and some of the items on it were rather large in size. We are very lucky to have lots of new gear now. Thank You, Thank You!!

### **Fundraising for our move to the School**

We are fundraising for our proposed move into the MOASH building at the school. Thank you to Wendy Moore and Aliasha Murray for their positivity and guidance during the initial planning stages of this project. There are a number of things that need to be put in place or changed to make this a safe and appropriate venue to run Playgroup from. Moving Playgroup to the school grounds should have lots of positive outcomes for the children, as we are able to work more closely with the school. More thank yous... Thank you to the Playgroup members who helped cater the lunch at the Amenities Building when the UWA students visited Beverley and also to the members who catered morning tea for the recent Early Years Network meeting. Thank you to all those fabulous people who baked so many wonderful goodies and made such generous donations towards our street stall held in April.

### **Winners!!**

The winner of the \$100 note raffle at the street stall – Congratulations Lew Shaw  
The winner of our Mother's Day raffle drawn 7<sup>th</sup> May – Congratulations Judy Moulton

### **Beverley Show Mural**

We are doing an enchanted garden themed mural this year. We have just started some of the craft activities towards making this. There are many more to be done! Make sure you get along to Playgroup so your child can have their work displayed on the mural.



## So much fun at Playgroup...



Free car seat safety checks



Skye Pierce with her Easter Eggs



Sebastien Kop about to enjoy one of his eggs



Artists hard at work. Ella Veitch and Ruby White



Lara Davey & William Farr



Ashlyn Higgins helping prepare fruit for morning tea

### PLAYGROUP SESSION DETAILS

Every Thursday morning from 9.30am to 11.30 am

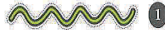
(closed for school and public holidays)

- ✓ Located at the Amenities Building at the Beverley Oval
- ✓ For any child aged 0-4 years old
- ✓ Bring a piece of fruit to share, hat and sunscreen
- ✓ \$4 per family per week (for coffee/tea, craft activities etc...)
- ✓ Annual Fees: Concession card: \$15 insurance + \$5 rental contribution  
Other: \$30 insurance + \$5 rental contribution
- ✓ More info call Hollie on 0409 299 089
- ✓ Or find us on Facebook: [facebook.com/BeverleyPlaygroupWA](https://www.facebook.com/BeverleyPlaygroupWA)

## What is Lyme disease?

Lyme disease (also known as *Lyme borreliosis*) is an infectious disease transmitted by ticks or other insects. The bacteria that causes Lyme disease, comes from a group called *Borrelia burgdorferi sensu lato*. At least twenty species are known to infect humans and cause disease. They are part of the spirochete family, which have a distinctive corkscrew shape (see image 1).

## What are the symptoms and signs?



Lyme disease can have three stages: 1: early, 2: disseminated/dispersed and 3: chronic. Symptoms can appear within days, weeks or months. Different areas of the body are affected in varying degrees and symptoms come and go. They may include: **Dermatological**; a rash of variable size and shape, sometimes a bullseye shape (erythema migrans, see image 4). A skin condition called acrodermatitis chronica atrophicans. **General**; fever, sweat attacks, prolonged tiredness, sore throat, stiff neck, muscle and joint pain. **Neurological**; muscle twitches, tingling, numbness, light and noise sensitivity, headache, dizziness, Bell's palsy and muscle weakness. **Arthritic**; unexplained joint swelling and painful joints. **Psychological**; confusion, difficulty concentrating, forgetfulness, disorientation, dyslexia, depression, paranoia, panic attacks, anxiety, hallucinations. **Respiratory & cardiovascular**: cough, shortness of breath, heart failure, rib soreness, chest pain. **Gut**: nausea, vomiting, constipation, diarrhoea.

*Images:* 1. Depiction of Borrelia as a spirochete. 2. Depiction of the three different forms of Borrelia in the body as: A. Spirochete outside red blood cells. B. Spirochete inside a nerve cell. C. Cyst form outside red blood cells. D. Cyst form inside a nerve cell. E. Cell wall deficient form inside a nerve cell.

## Information about ticks

Ticks feed only on blood and are described as 'nature's dirty needles'. The most common tick associated with bites is the paralysis tick. Other species include the bush tick and brown dog tick (see image 6). Ticks go through four stages in their life cycle; egg, larvae, nymph and adult (see image 5). Ticks have eight legs in the nymph and adult stages (six as larvae) and are related to spiders and mites.

## What if I have been bitten?

Don't panic! If you are bitten by a tick it doesn't always mean you will get ill as not all ticks carry the disease. Make sure the tick is removed as quickly as possible and in the correct way. If you get a rash or you feel ill after a tick bite, this may indicate a Borrelia infection, see your doctor immediately. Some people may also have an allergic reaction to the tick and may require antihistamines.

## How do you remove a tick?

Use high-quality pointed tweezers or specific tick-removal devices that are available in your pharmacy. Grab the tick by the mouth parts very close to the skin, and pull gently upwards (see image 3). Don't crush the tick, as this will expel its gut contents into you and increase the risk of infection. Don't apply chemicals (eg. methylated spirits, petroleum jelly or kerosene) as this may cause more toxins and bacteria to be released.

*Images:* 3. Safe removal of a tick. 4. Erythema migrans (EM) or bullseye rash. 5. Comparison of tick size and life stages.

## Treatment

Many Australian doctors are not familiar with treating Lyme disease and there is an urgent need to provide training. If affected, see a doctor that is aware of Lyme disease. Always keep your GP involved and informed. Lyme disease is a bacterial infection and is treated with antibiotics. Other medicines may also have a place in treatment. Early treatment is crucial for full recovery. If treatment is delayed the risk of developing chronic Lyme disease is increased. Chronic Lyme treatment is complex, usually long-term and is further complicated by immunosuppression by the Lyme bacteria.

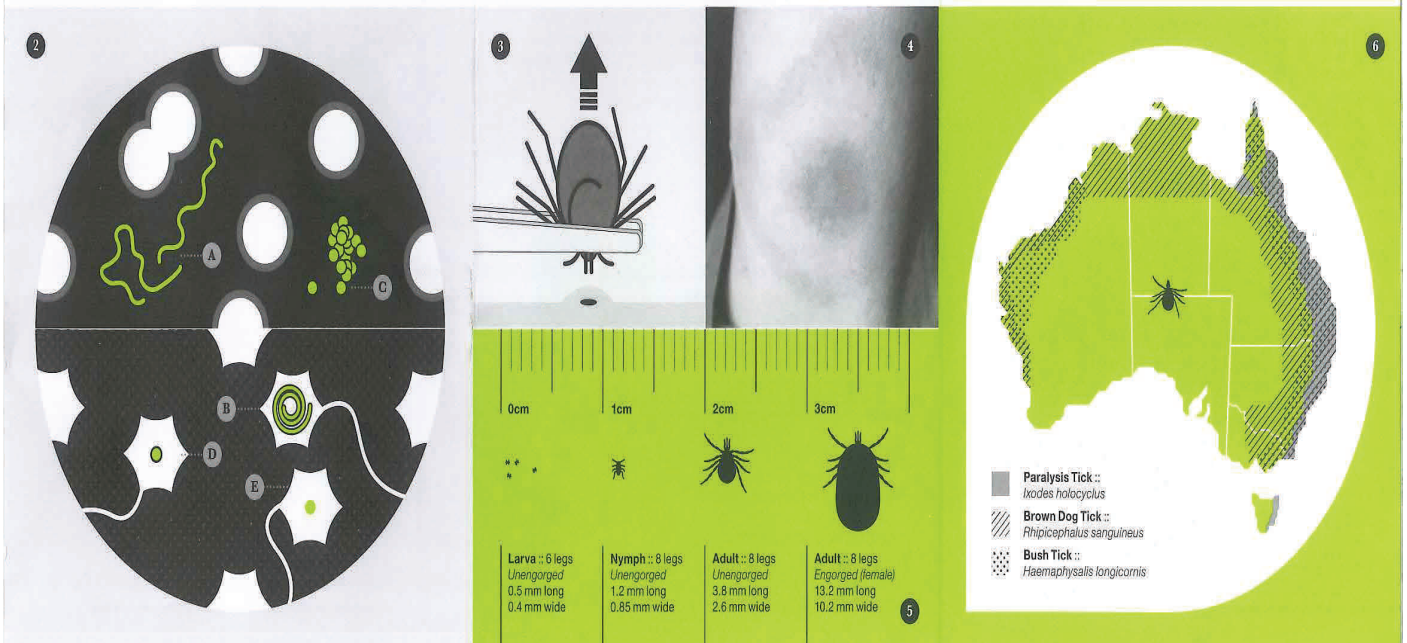
## Testing for Lyme

Tests for Lyme disease are difficult as they have not yet been developed to suit the Australian situation. They can give negative results due to the immunosuppressive nature of Borrelia. A negative result doesn't mean absence of the disease. Research in this area is vital to establish correct diagnosis.

## Co-infections

A tick bite can deliver not only the Lyme bacteria but a raft of other parasitic, bacterial and viral infections, such as Rickettsia, Babesia and Bartonella. The co-infections complicate the illness and treatment of Lyme disease. It is vital that appropriate antibiotics are used to treat co-infections for recovery.

*Image:* 6. Distribution of Australian ticks. For images of ticks please visit our website: [www.karimcmanusfoundation.org.au](http://www.karimcmanusfoundation.org.au)



# Garden Supplies Avondell Earthmoving

Sand Gravel Blue Metal

Blue Metal Dust Crushed rock mix for concrete

Pig manure mixed with straw

Sheep Manure Chicken Manure

All soils and manures can be mixed to your requirements.

BYO trailer loads or our 10<sup>3</sup>m truck

**Phone**  
**0429 088 689**

**Phone**  
**0488 087 316**

# RA-AN ENTERPRISES

All Dozer and Excavator Work

Including:

**Dam Sinking  
Dam Cleanout and Enlarging**

**Excavator with Wood Shears,  
Tilt Bucket and  
Hydraulic Grab.**

Locally Based at West Kokeby

**Phone Ray 0428 936 621 or  
08 9646 4136**



This project is supported by funding from the Australian Government.

## **MEDIA RELEASE**

*For immediate release*

### **West farmers clear the air on the business case for carbon farming**

Kondinin Group has successfully held six farmer workshops for WA farm-based businesses considering carbon offsets projects in March and April.

Farmers from mixed farming, cropping, livestock and forestry growing, together with agricultural and farm management consultants attended the workshops in Geraldton, Carnamah, Dowerin, Merredin, Narrogin and Katanning.

In the workshops, participants worked through key steps for building a business case for a farm-based business considering participation in the Emissions Reduction Fund (ERF). Each delegate received a 200+ page workshop manual covering economics, ERF methods, legal and regulatory contacts and taxation considerations.

Kondinin Group's Project Manager Nilay Gencturk said "The delegates used an excellent carbon farming business manual written by economists and lawyers, with two Excel templates to carefully work through different cost and revenue scenarios. This hands-on part of the workshop really helped farmers to step through all the pros and cons to quantify the risks and recognise all the benefits of carbon farming and ERF participation."

"A farmer considering participation in the ERF needs to know all the facts before deciding whether a carbon farming project is going to be right for them. The workshop discussions certainly were highly regarded by the farmers who attended" says Gencturk.

The Australian Farm Institute presented five workshops. Director, Mick Keogh said "Farmers should consider carbon farming as an additional farm enterprise that may complement their current enterprises."

An ERF project should be approached with the same degree of caution and research as they would any other new enterprise. Like any farm enterprise, carbon farming presents opportunities and challenges, which need to be well understood before decisions are made."

"The workshops provided a useful first step in the process of gaining a sufficient understanding in order to make an informed decision about whether an ERF project would work as part of a farm business."

"The workshops provide a valuable explanation of how ERF projects work, and also provide some universally relevant material about enterprise budgets."

"The manual is also a very useful reference for farmers who have attended a workshop and would like clarification on specific issues" said Keogh.

Jo Wheeler delivering extension for Western Australian No-Tillage Farmers Association Inc. (WANTFA) about the ERF to WA growers said "Creating a project can be a complicated process; the more help a farmer or landholder gets along the way could help the success of a project."



**Kondinin Information Services Pty Ltd** ABN 72 133 413 920

613-619 Wellington Street, Perth WA 6000 Tel: 1800 677 761 Fax: 1800 657 509

Level 1, 104 Bathurst Street, Sydney NSW 2000 Tel: (02) 8525 9415 Fax: (02) 9279 2222

**Carbonfarminginitiative.farmingahead.com.au**



# BEVERLEY REDBACKS HOCKEY CLUB



The 2015 Season is now in full swing, with many of our games being played in Beverley. The oval is looking fantastic, so why not pop down for home games to see all the action. This year the competition has seen only 6 teams register, meaning we will play each team 3 times over the course of the year.

## **Round 1 Beverley vs York Vipers 2<sup>nd</sup> May**

We were lucky enough to open the season with a home game, as previously the first game was always held in Northam. The girls took the opportunity to go out hard and not let any 'first game nerves' get in the way. The first half showed a very strong Beverley side, but an equally persistent York team. The second half proved that our fitness levels need to be worked on, but the game was played in very warm conditions....some would say a perfect sunny autumn day. The girls came off winners, in a fantastic start to the season. We welcome back Emma Davey and welcome newcomers Bec Sims as our fabulous new goalie and Mirika Winmar who scored our first goal!

Beverley 2; York Vipers 1

### **Goals Scorers**

Mirika Winmar 1; Kathryn McLean 1;

### **Award Winners**

Kelly Mann - Captains Award - Sponsored By: Garry and Sarah Miller, Beverley Transport

Bec Sims - Coaches Award - Sponsored By: Trevor and Amanda McLean, Waterbrae Pastoral Co.

## **Round 2 Beverley vs Aces 9<sup>th</sup> May**

With another home game, the girls were looking at making it 2 from 2.....and that's exactly what they did! A brilliant game by all accounts as the girls played some fantastic hockey. The bad news, our Captain Kathryn McLean and Vice Captain Chantelle Meade suffered injuries which saw them sidelined for the remainder of the game. We wish you a speedy recovery!!

Beverley 2; Aces 0

### **Goals Scorers**

Mirika Winmar 2

### **Award Winners**

Karlee Morrell - Captains Award - Sponsored By: Garry and Sarah Miller, Beverley Transport

Mirika Winmar - Coaches Award - Sponsored By: Trevor and Amanda McLean, Waterbrae

## **Round 3 Wongan Drifters vs Beverley 16<sup>th</sup> May**

Our first away game for the season saw the girls travel to Northam. With challenging weather conditions facing them (it was very cold and wet!!), it didn't stop the girls from going out strong and continually putting pressure on the Drifters. Even though we had plenty of opportunities to score in the first half, we just couldn't quite get there. The second half saw Emily Miller, goal shark, score 2 goals! The teamwork between the girls really showed, resulting in a win....3 out of 3 is just the start to the season we wanted.

## **Beverley IT**

*Making IT Simpler*

**I'll come to you - Serving Beverley, York & district**

- Can't find your files?
- Windows 8 a mystery?
- Virus or security worries?
- Printer, WiFi or Internet set up?
- Need Microsoft Office help?
- Mobile reception poor on your farm?



45 years experience in Computing, Internet & Telecoms;  
Word, Excel & PowerPoint expert

**Contact: Peter the IT Specialist**

**Tel: 0419 949 604**

**peter@beverleyit.com.au**

## **AVON DRILLING SERVICE**

**Mick Lewis**

**Ph: 9572 7828**

**Mob: 0427 814 055**

**Brenton Legg**

**Mob: 0404 708 979**

**WATER BORES  
BORE DEVELOPMENT  
MINI EXCAVATOR HIRE  
POST HOLE DRILLING**



# BEVERLEY REDBACKS HOCKEY CLUB



Continued from page 44.....  
Beverley 2; Wongan Drifters 0

### Goals Scorers

Emily Miller 2

### Award Winners

Michaela Miller - Captains Award - Sponsored By: Garry and Sarah Miller, Beverley Transport  
Emily Miller - Coaches Award - Sponsored By: Trevor and Amanda McLean, Waterbrae Pastoral Co.

### Quiz Night

Thank you to everyone who attended our recent Quiz Night! The night went off well with the amenities building bursting at the seams! Congratulations to the winning table (Team 'School') who won by 1 point! Thank you to all our sponsors for donating all the prizes. Thank you to Hollie Smith for putting together the questions and slide show and to Fleeta Redding on being MC for the night!

### Committee Changes

The Committee held a Special AGM last month, which has resulted in a few Committee changes.

- President – Carly Veitch 0429966678
- Vice President – Hollie Smith 0409299089
- Secretary – Chantelle Meade 0429418576
- Treasurer – Megan Vandenberg 0409667243
- Committee – Kathryn McLean, Lisa Mourich, Megan (Bird) Gaine and Chris Mann



### UPCOMING DATES TO REMEMBER

- Saturday 30<sup>th</sup> May General BYE
- Saturday 6<sup>th</sup> June Beverley vs York Jetz – 3pm in Beverley**
- Saturday 13<sup>th</sup> June York Vipers vs Beverley – 3pm in York
- Saturday 20<sup>th</sup> June BYE (Country Week)
- Saturday 27<sup>th</sup> June Aces vs Beverley – 1.30pm in Northam
- Friday 3<sup>rd</sup> July Beverley vs York Vipers – 7.45pm in York
- Saturday 11<sup>th</sup> July General BYE

If you want to stay up to date with any Hockey News, please register your email address by emailing [beverleyhockey@live.com.au](mailto:beverleyhockey@live.com.au) or why not 'LIKE' our New Facebook Page, just search 'BEVERLEY REDBACKS HOCKEY CLUB' and be kept up to date.

**ROYAL ANTEDILUVIAN ORDER OF BUFFALOES**



GLE (Inc)  
QUAIRADING BEVERLEY NO.163

We meet the first Wednesday of every month at the Masonic Lodge, Hunt Road, Beverley

*The objects of our order are Philanthropy and Good Fellowship.*

For more info contact  
Tom 0419 945 240

**WD & LM SLEEP BOBCAT**



**Specialising in**  
House tank and shed pads, laser level to engineered specifications, also bobcat site work, block cleanups and post hole digger.

**M: 0429 461 314**

**VOICE OF THE AVON - 101.3 FM**

**LOCAL PROGRAMMING**

**SUNDAY**

8.00 - 11.00 Sunday Morning Coming Down - John  
12.00 - 1.00 Soul & Inspiration - Susan  
4.30 - 9:00 Metamorphosis - Bob

**MONDAY**

6.00 - 10.00 Monday Breakfast - Bob  
10.00 - 1.00 Mustang Sally - Susan  
1.00 - 4.00 Folk/Swingin' Jazz Club - Peter  
4.00 - 7.00 Celtic Note - Joe  
7.00 - 10.00 Classical Sounds - Chris

**TUESDAY**

6.00 - 9.00 Tuesday Breakfast - Bob  
9.00 - 12.00 Around The World - Leila  
12.00 - 3.00 Country Roads with Joe - Joe  
7.00 - 10.00 Old Guys Rock - Terry

**WEDNESDAY**

9.00 - 1.00 A Little Bit of Everything - Joe  
1.00 - 4.00 Potpourri - Peter  
4.00 - 7.00 Legends and Locals - Mark  
7.00 - 9:00 Back to the Future - Frank

**THURSDAY**

6.00 - 9.00 Thursday Sunrise - Rhonda  
9.00 - 12.00 Mustang Sally - Susan  
12:00 - 3:00 Kaleidoscope - Chris  
3.00 - 6.00 Sweet with a Beat - Keith  
6.00 - 9.00 True Rock 'n Roll - Milo

**FRIDAY**

6.00 - 10.00 Friday Breakfast - Bob  
10.00 - 1.00 Tessography - Tess  
1.00 - 4.00 Kornucopia - Kazza  
6.00 - 9.00 Friday Night Country - Milo

**SATURDAY**

5:00 - 10:00 Saturday Morning Variety Show - Terry  
11.00 - 3.00 Saturday Mix - Graham  
6.00 - 9.00 The Time Zone - Kazza  
9.00 - midnight Late Night Nic - Nic

Station Phone Number 9641 2422

e-mail: [radio6ycr@hotmail.com](mailto:radio6ycr@hotmail.com)

Facebook.com: Voice of the Avon 101.3 FM

- with live streaming

Website: [www.voiceoftheavon.org.au](http://www.voiceoftheavon.org.au) - live

streaming Voice of the Avon 101.3 FM

90.5 hours of local presenters each

week. *Effective 24 March 2015*



*T.M. Hair Design.*



Our professional hairdressers are here to help with all of your family's needs.

They are kept up to date with our Sydney based technician Who is always at hand should we need her Between her regular visits to the salon.

Their passion for hairdressing is very powerful And they all just love what they do.

We are so very lucky to have four hairdressers to choose from In our small town.

If you haven't had the pleasure of meeting them all Call in soon and introduce yourself.

Don't forget to ask for our Seniors Gents price.

Meanwhile at Secrets.....Have you seen our environmentally friendly eco-brush range? These great sustainable, biodegradable, natural, ethically, handmade products will break down naturally. In your compost bin, at the end of their life. We stock a full range of brushes for kitchen, bathroom and general household use.

The only things they don't do is sweep the floor for you!!!!

Call in and take a peek. You are sure to be impressed.

All our winter woollies are in and looking great. From Merino wool to Merino possum blends and cashmere silk and cotton blends to synthetics, there is something for everyone price range and warmth level.

Our ladies dress leather boots are going well, as are winter fashion's. Don't leave it too long before taking a look as there are no re-orders available now so what you see is what you get!!!!

See you soon.....

**Call in to 100 Vincent St, or phone 9646 1122.**



*U Beauty Country*

*April Stock Clearance*  
25% off all JOIPure Products

Cleansers - Moisturisers - Night Serums  
- Body products

All natural and organic made in WA

**NEW OPENING TIMES**

**WEDNESDAY 9.00am - 5.00pm**

**THURSDAY 9.00am - 5.00pm**

**FRIDAY 9.00am - 5.00pm**

**SATURDAY 9.00am - 12.30pm**



**Contact Penny Burns**

**Phone 0429 027 718 Email [ubeauty.country@gmail.com](mailto:ubeauty.country@gmail.com)**

# Beverley Men's Golf

Saturday 2 May saw a field of 13 players compete in idea conditions for the **Always Green Trophy** sponsored by **Gavin Sazanov**.

It was great to welcome Ron Bickley back to the club for a game.

The winner of the day with a wonderful Par score of +7 was Gavin Sazanov, however Gavin felt that it was not right if he won his own trophy and this was awarded to the second place getter with a score of +5 being Ronald (The Gnome) Bickley, third place went to Terry Winfield with +1. Other players worthy of mention with John Donovan, Liam Gollan and Chris Pepper who were square to the card at the end of their rounds.

Thanks again to **Gavin Sazanov** for his continued sponsorship.

Saturday 9<sup>th</sup> May was the 1<sup>st</sup> Qualifying Round for the Men's Championship. 12 players participated on the day, with the day being sponsored by **John Donovan**.

Terry Winfield had a good day out, shooting a four over par score of 76 to win the day with a nett score of 68. Gavin Sazanov was runner up with a fine nett score of 70 with Chris Pepper in third place with 71 nett.

Thanks are extended to John Donovan for putting on the day.

Rain and wind greeted 7 players on Saturday 16<sup>th</sup> May to play for the "**Garden Gnome**" trophy sponsored by **Ron Bickley**.

With scoring very difficult due to the weather which saw three players withdraw after 9 holes, scores were very low at the end of the day.

John Donovan won the day with 23 Stableford points, one ahead of Mark Bickley with 22. Gavin Sazanov (21) and Mel Vivian (17) rounded out the scores.

The club thanks **Ron Bickley** for continuing to sponsor this day.

In pleasant conditions 7 played on Saturday 23<sup>rd</sup> May for the **Belhus Trophy**.

It was a Stableford 4 Ball Better Ball event. There were good scores on the day but none better than Mark Bickley and Mark Armstrong who had 45 points to edge out Gavin Sazanov and Wayde McLean with 42 points.

The club thanks **Greg Barrett-Lennard** for his continued sponsoring the day.

## JUNE FIXTURES

Saturday 06 June Wayne Smith Trophy Stroke  
2nd qualifying round

Saturday 13 June Beverley Electrical Services Trophy Stableford  
Sunday 14 June DRGA - Waroona Open Day

Saturday 20 June GL Broun Trophy Stableford  
Monthly Mug  
Sunday 21 June AVGA Mixed - Corrigin

Sunday 27 June Fred Sing Trophy Stroke  
3rd qualifying round

## JULY

Friday 03 July Primaries Day Ambrose in 3's  
Men's and ladies, arrange own partner

## Beverley Ladies Golf Fixtures

### JUNE

Wednesday 3 June Club Trophy Par  
Wundowie Open Day

Wednesday 10 June Overington Trophy Stableford  
Gingin Open Day

Wednesday 17 June Heather McLean Trophy Stroke  
2nd International Bowl  
3rd Silver Spoon  
3rd Putting  
3rd Qualifying Round

Friday 19 June Cunderdin Open Day

Wednesday 24 June - Friday 26 June Rural Bronze at Geraldton Golf Club

Wednesday 24 June Val Hagan Trophy Stableford

### JULY

Wednesday 01 July Lyn Mactaggart Trophy Stroke  
3rd International Bowl  
4th Silver Spoon  
4th Putting  
4th Qualifying Round

Friday 03 July - Sunday 05 July Provincial Tournament at Dandaragan

Wednesday 08 July Tracy Fleay Trophy Stableford

Friday 10 July Goomalling Open Day

Wednesday 15 July TM Hair Design Jubilee  
Fours

Friday 17 July Quairading Open Day

Wednesday 22 July Val Moir Trophy Stroke  
5th Silver Spoon  
5th Putting  
5th Qualifying Round

Tuesday 28th July Northam Open Day

Wednesday 29th July Shirley Carr Trophy Stableford  
Monthly Medal and Mug

## Avon Netball Association Inc - 2015 Netball Fixtures

TEAM	TEAM NAME	TEAM CONTACT	CONTACT
1	PINGELLY OPALS	Sheree Blechynden	0402 745 401
2	BROOKTON GLORY	Charlene Elliot	0455 577 088
3	PINGELLY SAPPHIRES	Jodie Marshall	08 9887 9050
4	BEVERLEY HUNTERS	Nat Ashworth	0429 491 039
5	PINGELLY DIAMONDS	Dorinda Giles	0429 379 092
6	BEVERLEY SPINNERS	Jess Fleay	0427 181 029

The Team named first is to provide a scorer; the team second is to provide a time keeper.  
TEAMS MUST BE SET AND NOT CHANGED AFTER THE THIRD PLAYING DATE

Please email the score cards to : [brooktonnetballclub@hotmail.com](mailto:brooktonnetballclub@hotmail.com) Please use the subject line; Att Records

DATE	TIME	GAME	VENUE	COURT	UMPIRES
<b>ASSOCIATION BYE</b>					
<b>Saturday 6th June</b>	1:45	3 v 6 Sapphires v Spinners	Pingelly	1	Glory
	1:45	4 v 5 Hunters v Diamonds		2	Opals
	3:15	2 v 1 Glory v Opals		1	Sapphires
<b>Saturday 13th June</b>	1:45	5 v 3 Diamonds v Sapphires	Beverley	1	Hunters
	1:45	6 v 2 Spinners v Glory		2	Opals
	3:15	1 v 4 Opals v Hunters		1	Diamonds
<b>ROUND TWO</b>					
<b>Saturday 20th June</b>	1:45	2 v 4 Glory v Hunters	Pingelly	1	Spinners
	1:45	1 v 3 Opals v Sapphires		2	Diamonds
	3:15	6 v 5 Spinners v Diamonds		1	Opals
<b>Friday 26th June</b>	6:45	5 v 2 Diamonds v Glory	Brookton	1	Spinners
	6:45	4 v 3 Hunters v Sapphires		2	Diamonds
	8:15	6 v 1 Spinners v Opals		1	Hunters
<b>Friday 3rd July</b>	6:45	5 v 1 Diamonds v Opals	Beverley	1	Glory
	6:45	4 v 6 Hunters v Spinners		2	Sapphires
	8:15	3 v 2 Sapphires v Glory		1	Opals
<b>SCHOOL HOLIDAYS</b>					
<b>Friday 17th July</b>	6:45	1 v 2 Opals v Glory	Brookton	1	Spinners
	6:45	5 v 4 Diamonds v Hunters		2	Sapphires
	8:15	6 v 3 Spinners v Sapphires		1	Opals
<b>Saturday 25<sup>th</sup> July</b>	1:45	2 v 6 Glory v Spinners	Beverley	1	Sapphires
	1:45	4 v 1 Hunters v Opals		2	Diamonds
	3:15	3 v 5 Sapphires v Diamonds		1	Hunters
<b>SATURDAY 1st August</b>		Semi Finals	Brookton		
<b>FRIDAY 7th August</b>		Preliminary Finals	TBA		
<b>SATURDAY 15th August</b>		Grand Final	Brookton		



## Beverley Netball Club

The Beverley Netball Club has had a great start to the 2015 season with both teams playing a round robin in Brookton on Friday 01 May against both Pingelly and Brookton teams. The evening was an eye opener for the new players but never the less a fantastic introduction to the season. The teams took the community bus, which as always proved to be a team bonding experience.

The first fixtured game of the season was on Saturday 09 May, which saw both Beverley teams Hunters vs Spinners go head to head at the opening of the Pingelly courts. Derby's are always intense but for the first round the Spinners won 26 - 12. Well done to both teams on your efforts.

As a club we endeavour to offer our members as many off court opportunities to socialise and bond, so we will be hosting the Players Tea again this season. Keep Saturday 06 June free and we will see you at the Amenities Building at 6pm, partners and kids are welcome to join us too.

Please bring a casserole to share and your own drinks and take the opportunity to have a chat and a laugh off the court.

### General Club Information

Trainings are on every Wednesday at 6.00pm at the courts.

### Team contacts

Hunters - Nat Ashworth

0429 491 039

Spinners - Jess Fleay

0427 181 029

Please be sure to let your team contact if you are unable to play a game.

The next committee meeting is on Tuesday 09 June at 7.00pm for a 7.15pm start at the Amenities Building.

# BEVERLEY NETBALL CLUB



### **Hunters Netball Team**

Front row: Cara and Linda

Back row: Laura, Jill, Mikayla, Natalie, Lydia, Sharlee

**Absent:** Vanessa, Jen, Monika, Sharmaine

### **Spinners Netball Team**

Front row: Sam, Casey, Courtney, Jai

Back row: Trinity, Jo, Jess, Claire and Jodie

**Absent:** Kayla and Amor

**passive energy systems**

*\$0 DEPOSIT SOLAR FINANCE AVAILABLE*

**ALL ELECTRICAL SERVICES**

Commerical, Industrial & Residential

local specialists in

**SOLAR POWER**

GRID-CONNECT  
OR  
OFF-GRID

**WIND POWER**

*the sky's the limit*

call John or Marlene for a quote:  
646 77 263

[info@pvenergy.com.au](mailto:info@pvenergy.com.au) - [www.pvenergy.com.au](http://www.pvenergy.com.au)

100% customised to suit your personal needs & budget!

#EC8564  
Clean Energy Council  
**ACCREDITED**

\*Terms & Conditions Apply. Finance is offered through Solar Finance Solutions Pty Ltd



# Beverley Football Club - Home of the Redbacks

## Featured Events:

Sunday 14<sup>th</sup> June – AFA Round 10 (Talk to a Mate): Beverley vs. York at Beverley;

Saturday 4<sup>th</sup> July – AFA Round 12 (Drink Drive is never OK): Beverley vs. Kellerberrin/Tammin at Beverley;

and

**6:00pm, Saturday 4<sup>th</sup> July** – Beverley Redbacks: **"Americano Night"** at the Beverley Amenities Building.

It's been a busy start to the season for the Beverley Football Club, and after a run of five straight games, which resulted in three wins and two losses, the bye came as a welcome relief for those players either carrying or still recovering from injury. It was also very timely as the heavens opened during our last home game against Federals.

The Beverley Football Club extends our deepest sympathy to Bruce and Chris Mann, and family, on the passing of Chris' mother, Christina Jeffrey on Saturday 2<sup>nd</sup> May.

## AFA Round 3 (26<sup>th</sup> April 2015) – Beverley vs. Cunderdin at Beverley

LEAGUE	1 <sup>st</sup>	2 <sup>nd</sup>	3 <sup>rd</sup>	4 <sup>th</sup>	Points
Beverley	1.2	7.6	8.11	10.13	73
Cunderdin	1.2	1.4	1.8	1.11	17
<b>Margin:</b>	56 points				

**Goals: Beverley** - Michael Larkin 3; Peter Major 2; Scott Tomlinson 1; John Lee 1; Tyron Miller 1; Dale Wansbrough 1; Dane Shardlow 1.

**Best: Beverley** - Luke Foster, Simon Marshall, John Lee, Matthew McLean and Justin Mann.

RESERVES	1 <sup>st</sup>	2 <sup>nd</sup>	3 <sup>rd</sup>	4 <sup>th</sup>	Points
Cunderdin	5.4	9.6	13.10	17.11	113
Beverley	1.1	4.2	5.2	6.4	40
<b>Margin:</b>	73 points				

**Goals: Beverley** - Travis Ugle 2; Chad Lundy 1; Tim Radcliffe 1; Damien Murray 1; Harry Milne 1.

**Best: Beverley** - Khyle Ugle, Daniel Bailey and Harry Milne.

## NETBALL

Cunderdin	43
Beverley	29
<b>Margin:</b>	14 goals
<b>Best: Beverley</b>	- Narelle Bailey

## AFA Round 4 (3<sup>rd</sup> May 2015) – Beverley vs. Quairading at Beverley

LEAGUE	1 <sup>st</sup>	2 <sup>nd</sup>	3 <sup>rd</sup>	4 <sup>th</sup>	Points
Beverley	1.6	4.7	8.12	12.16	88
Quairading	1.2	4.6	6.7	8.9	57
<b>Margin:</b>	31 points				

**Goals: Beverley** - Peter Major 3; John Lee 2; Scott Tomlinson 2; Ben Ireland 2; Dale Wansbrough 1; James Adams 1; Michael Larkin 1.

**Best: Beverley** - Ben Ireland, Luke Foster, John Lee, James Adams and Dale Wansbrough.

RESERVES	1 <sup>st</sup>	2 <sup>nd</sup>	3 <sup>rd</sup>	4 <sup>th</sup>	Points
Quairading	1.1	3.2	5.5	8.12	60
Beverley	2.0	4.1	4.3	4.5	29
<b>Margin:</b>	31 points				

**Goals: Beverley** - James Turner 4.

**Best: Beverley** - David Kennedy, Travis James, Daniel Bailey, Charlie Horrocks, Chad Vandenberg and Blake O'Meagher.

## NETBALL

Beverley	39
Quairading	26
<b>Margin:</b>	13 goals
<b>Best: Beverley</b>	- Narelle Bailey



### AFA Round 5 (10<sup>th</sup> May 2015) – York vs. Beverley at York

#### LEAGUE 1<sup>st</sup> 2<sup>nd</sup> 3<sup>rd</sup> 4<sup>th</sup> Points

York 3.4 7.6 11.7 16.14 110

Beverley 4.2 7.4 9.10 12.12 84

Margin: 26 points

**Goals: Beverley** - Peter Major 4; Dale Wansbrough 2; Sam Young 1; Gerard Gibson 1; Matthew McLean 1; Matt Dwyer 1; John Lee 1; Tyron Miller 1.

**Best: Beverley** - Ben Ireland, Justin Mann, Dale Wansbrough, Scott Jansen and Daniel Fleay.

#### RESERVES 1<sup>st</sup> 2<sup>nd</sup> 3<sup>rd</sup> 4<sup>th</sup> Points

York 6.0 10.2 13.4 18.8 116

Beverley 4.0 4.2 8.2 8.2 50

Margin: 66 points

**Goals: Beverley** - Ben Ashford 2; David Kennedy 2; Brendan Tomlinson 1; Ben Moulton 1; Mark Britza 1; Blake Wansbrough 1.

**Best: Beverley** - Blake Wansbrough, Chad Lundy, David Kennedy and Dominic Tee.

#### NETBALL

York 57

Beverley 14

Margin: 43 goals

**Best: Beverley** - Gemma Ridgway

### AFA Round 6 (17<sup>th</sup> May 2015) – Beverley vs. Federals at Beverley

#### LEAGUE 1<sup>st</sup> 2<sup>nd</sup> 3<sup>rd</sup> 4<sup>th</sup> Points

Beverley 3.1 5.3 10.3 10.3 63

Federals 1.0 2.4 4.6 8.12 60

Margin: 3 points

**Goals: Beverley** - Sam Young 4; Dale Wansbrough 2; Tom Clarke 1; Owen Marsh 1; Matt Dwyer 1; Ben Ireland 1.

**Best: Beverley** - Luke Foster, Sam Young, Ben Ireland, Stuart Murray, Dale Wansbrough and Justin Mann.

#### RESERVES 1<sup>st</sup> 2<sup>nd</sup> 3<sup>rd</sup> 4<sup>th</sup> Points

Federals 3.3 5.4 7.6 11.12 78

Beverley 0.1 0.3 1.3 1.4 10

Margin: 68 points

**Goals: Beverley** - Chad Vandenberg 1.

**Best: Beverley** - Ben Moulton and Chad Vandenberg.

#### NETBALL

Federals 43

Beverley 18

Margin: 25 goals

**Best: Beverley** - Emily Miller

### AFA Round 7 (24<sup>th</sup> May 2015) – Beverley (bye)

#### Congratulations to:

- 🏆 **First League game players for Beverley:** Tom Clarke, Scott Jansen, Ryan Patterson and Khyle Ugle.
- 🏆 **First Reserves game players for Beverley:** Ben Ashford, Brendan Counsel, Chad Lundy, Harry Milne, Ryan Patterson, James Turner and Khyle Ugle.
- 🏆 Mark Britza, who played his 50<sup>th</sup> Reserves game against Quairading on Sunday 3<sup>rd</sup> May;
- 🏆 Paul Paggi, who celebrated his 30<sup>th</sup> birthday on Sunday 3<sup>rd</sup> May;
- 🏆 Natalie Kilpatrick, who celebrated her 40<sup>th</sup> birthday on Monday 4<sup>th</sup> May;
- 🏆 Michael Henry, who celebrated his 50<sup>th</sup> birthday on Tuesday 12<sup>th</sup> May;
- 🏆 Josh & Chaise Sattler, on the birth of their baby boy Steele James on Wednesday 13<sup>th</sup> May;
- 🏆 Peter Marshall, who celebrated his 60<sup>th</sup> birthday on Friday 15<sup>th</sup> May;
- 🏆 Blake O'Meagher, who celebrated his 30<sup>th</sup> birthday on Saturday 16<sup>th</sup> May;
- 🏆 James Adams, who celebrated his 21<sup>st</sup> birthday on Tuesday 19<sup>th</sup> May;
- 🏆 Dominic Tee & Wendy Mourambine, on the birth of their baby boy Michael on Tuesday 19<sup>th</sup> May;
- 🏆 Matt Hobley, who celebrated his 30<sup>th</sup> birthday on Friday 22<sup>nd</sup> May;



Shelley Willison Photography



Shelley Willison Photography

- 
- ☆ Ben Murray, who celebrated his 40<sup>th</sup> birthday on Monday 25<sup>th</sup> May; and
  - ☆ Bob Hall, who celebrated his 75<sup>th</sup> birthday on Thursday 28<sup>th</sup> May.

**Best wishes to:**

Kathryn McLean for a speedy recovery, after she ruptured her ACL in the hockey game against Aces on Saturday 9<sup>th</sup> May; and Josh Sattler for a speedy recovery, after he tore his ACL in the Reserves game against York on Sunday 10<sup>th</sup> May.

**Coming up:**

Sunday 31<sup>st</sup> May – AFA Round 8: Railways vs. Beverley at Northam;  
Sunday 7<sup>th</sup> June – AFA Round 9: Quairading vs. Beverley at Quairading;  
Sunday 14<sup>th</sup> June – AFA Round 10 (Talk to a Mate): Beverley vs. York at Beverley;  
Saturday 21<sup>st</sup> – Sunday 22<sup>nd</sup> June – AFA General bye: Northern Region Colts Carnival at Wongan Hills;  
Saturday 27<sup>th</sup> June – AFA Round 11 (Purple Bra Day): Cunderdin vs. Beverley at Cunderdin;  
Saturday 4<sup>th</sup> July – AFA Round 12 (Drink Drive is never OK): Beverley vs. Kellerberrin/Tammin at Beverley;  
**6:00pm, Saturday 4<sup>th</sup> July** – Beverley Redbacks: **"Americano Night"** at the Beverley Amenities Building; and  
Thursday 9<sup>th</sup> – Sunday 12<sup>th</sup> July – AFA General bye: Country Football Championships in Perth.

The Beverley Football Club urges all supporters to join as a Member in season 2015! Members are integral to the survival of our Club and your support is greatly valued. The membership fees for season 2015 are:

Football Senior Player (age 22 and over) - \$100.00  
Football Senior Player (age 18 – 21) - \$50.00  
Football Junior Player (age 17 and under) - \$30.00

Netball Player (age 18 and over) - \$50.00

Social Member - \$30.00

**Pay online now**

BSB: 016540 (ANZ Beverley)  
A/c Number: 431901492  
A/c Name: BEVERLEY FOOTBALL CLUB

***The Beverley Football Club needs you!!***

If you're available to help with any of the following match-day duties throughout the course of the season, please contact a committee member, your assistance is most welcome.

**Match-day duties include:**

Time-keeper stewards;  
Interchange stewards;  
Reserves Field Umpire;  
Reserves Runner;  
Reserves & League Boundary Umpires and  
Trainers and water attendants.

A reminder to all players, members, sponsors and supporters that you can now view all the latest news and events from the Beverley Redbacks by checking out our Facebook page at: <http://www.facebook.com/beverley.footballclub?fref=ts>

**See you at the footy!!!**



**Travelling** Overseas or around Australia?  
To book a holiday of a lifetime  
Contact your local travel professional  
Catherine Riches

Tel: (61)8 9647-2173 Email: [broker3@bigpond.com](mailto:broker3@bigpond.com)  
Travel Associates Australia Pty Ltd - Licence Nbr:9TA1188  
Member of Travelscene American Express

**BADMINTON**

Wednesday mornings

Town Hall.

Open to all ages, men and women.



**AVON FOOTBALL ASSOCIATION  
2015 FIXTURES**

Start times: A Reserves 12.15pm  
League 2.15pm  
Netball 12.15pm

**Round 9 SUNDAY 07 June**

Quairading v Beverley  
York v Railways  
Federals v Cunderdin  
Keller/Tammin - Bye

**Round 10 SUNDAY 14 June**

*TALK TO A MATE*

Beverley v York  
Cunderdin v Quairading  
Keller/Tammin v Federals @ Tammin  
Railways - BYE

**COLTS CARNIVAL 20 - 21 JUNE**

**Round 11 SUNDAY 28 June**

*PURPLE BRA DAY*

Cunderdin v Beverley - **SATURDAY**  
Keller/Tammin v Railways @ Tammin  
Federals v Quairading  
York - Bye

**Round 12 SATURDAY 04 July**

*DRINK DRIVE IS NEVER OK*

Beverley v Keller/Tammin  
Railways v Federals  
York v Cunderdin  
Quairading - Bye

**LANDMARK COUNTRY CHAMPIONSHIPS 09 - 12 July**

**Round 13 SUNDAY 19 July**

*RAC - LET'S TALK ABOUT THE WHEATBELT*

Federals v Beverley  
Railways v Quairading - **SATURDAY @ 3pm**  
Keller/Tammin v York @ Tammin  
Cunderdin - Bye

**Round 14 SUNDAY 26 July**

Railways v Cunderdin  
Quairading v Keller/Tammin  
York v Federals  
Beverley - Bye

**Round 15 SUNDAY 02 August**

Beverley v Railways  
York v Quairading  
Cunderdin v Keller/Tammin - **SATURDAY**  
Federals - Bye

**Round 16 SUNDAY 09 August**

Beverley v Quairading  
Railways v York  
Cunderdin v Federals  
Keller/Tammin - Bye

**Round 17 SUNDAY 16 August**

York v Beverley  
Quairading v Railways  
Federals v Keller/Tammin  
Cunderdin - Bye

**Belt-up Finals**

1st Semi Final Sunday 23 August **Keller/Tammin**  
2nd Semi Final Sunday 30 August **Cunderdin**  
Preliminary Final Sunday 06 September **Beverley**  
GRAND FINAL Sunday 13 September **York**

**NEED PRACTICAL TRADE ASSISTANCE?**

***D & M Services***

(Design and Manufacturing Services)

Solving a range of practical needs and problems..

**Specialising in:**

- ✓ Kitchen renovations
- ✓ Shop fitting and modifications
- ✓ Furniture restoration
- ✓ General carpentry
- ✓ Alterations & installations
- ✓ Metal based fabrication
- ✓ Motorhome and Caravan fitouts
- ✓ Pergolas, Decks & Gazebos
- ✓ Designing and planning

**Guy Slingerland**

**0403602335**



**SAMBA - Card Game**

**WHEN:** Saturdays at 1.00pm

**WHERE:** CWA Hall, Dawson St.

Afternoon Tea provided. Enquiries 9646 1271

**KARRADALE LIVESTOCK TRANSPORT  
YORK LIVESTOCK TRANSPORT**

ABN 64 054 007 721

We service Beverley, Brookton, York  
& surrounding districts

Available to transport Sheep & Cattle

No job too big or small

Support the local communities

Member of ALRTA

If you need stock moved, Peter would love to  
hear from you - 0428 481 281





# Beverley Horse and Pony Club



At our May rally we trialled a new arrival time so that we could get all the equipment out and set up before 8.30am so the rally could start on time. This seemed to work well, still needs fine tuning but it was lovely to see our dressage arena out and set up along with our jumps. We all managed to get soaked with rain bringing the equipment back in, and some of the girls were lucky enough to get drenched during their jumping lessons too. Unfortunately we've been having a few different issues with our jumps truck this year but hope to have it all sorted out before our training day that we're holding in June.



Bronte with her second place ribbon and prize.

Bronte and Vicky attended Dryandra Pony Clubs two day event on the 25 and 26 April and we are very pleased to share that Bronte came home with a very well deserved SECOND place in the 45cm E grade 12 years and under. Well done Bronte! Both riders had a fantastic weekend and learnt a lot. Vicky returned to Dryandra on the 10 May for the Dryandra Regional Equestrian Association Inaugural Show Horse and Dressage Championships, where she competed in the Preliminary dressage.

Kip has had a very busy month out and about on her ponies and is a great representative for our club. Kip visited Wooroloo Horse and Pony Club for a rally. On Mother's Day she also attended Toodyay Gymkhana, this was a very successful day for Kip with one major highlight winning the Under 17 Champion Rider. She and Tealah went to Wooroloo Show where Kip riding Gwain received Champion Pony and Tealah riding Woody received Reserve Champion Pony. Well done to all the riders out representing our fantastic club.

The club would like to extend a huge thank you to Tess and Tealah Hawke who marched in the ANZAC dawn service. Good luck to the riders attending the Avon Zone 2DE one the 20 and 21 June and to those attending the Avon Valley ODE on 28 June. Our next rally is on Sunday 14 June; please arrive before 8.00am for set up and to be ready for an 8.30am gear check. New members are always welcome; please contact Mrs Pauline Appelbee if you are interested on 9647 1181 or at [appelbees@skymesh.com.au](mailto:appelbees@skymesh.com.au)

Happy Riding

Amy and Tom in the rain



## Beverley Horse & Pony Club Inc Presents

Showjumping Open Training Day

**13<sup>th</sup> June 2015**

**Beverley H&PC Grounds  
(Entry off Forrest st)**

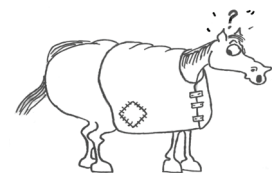
Entries Close the 6th of June 2015

**Canteen available**

*All enquiries to: Vicky 0409158852  
[bevhp.events@gmail.com](mailto:bevhp.events@gmail.com)*

*This is a non PCAWA event, Day insurance must be purchased*

## Horse Rug Repairs



**"Does my bum look big in this?"  
"Get your rugs ready for  
Winter"**

**Contact Andrew  
Oakdale Handcrafted  
Products  
Ph. 9646 1403**

## Coming Events In Beverley

Wednesday	03 June	South West Outreach Team in Beverley
Monday	08 June	Kerbside Collection
Friday	12 June	Live Band - Double Dragon at Freemasons
Saturday	13 June	BORMSA Twilight Autocross
Sunday	14 June	BHPC Rally
Saturday 20 June	Sunday 21 June	Avondale Open
Monday	29 June	Family Day Care Workshop at CRC
Saturday	04 July	Americano Night - Beverley Redbacks Football Club
Sunday	12 July	BORMSA Autocross
Saturday	18 July	BHPC Rally
Saturday	08 August	BORMSA Busy Bee & Junior Motorkhana
Sunday	09 August	BORMSA Autocross
Saturday	22 August	Beverley Agricultural Show Day 2015
Monday	24 August	Mad Men's Muster 2015
Sunday	30 August	50th Anniversary Beverley Horse and Pony Club
Saturday	12 September	Country Choir Bash
Sunday	20 September	BORMSA Twilight Khanacross
Saturday	24 October	BORMSA Autocross
Saturday	07 November	Rolling Stones & Rock Montage Tribute @ Platform
Saturday	19 December	Family Christmas Party @ Platform

The flag was flown at half-mast on the Beverley Town Hall as a mark of respect to:-

- **Neverman, Doreen**
- **McEwan, Stella**

### DISCLAIMER

The information in this publication is of a general nature as a service to the ratepayer. The articles included herein are not intended to provide a complete discussion of each subject. While the information is believed to be correct, no responsibility is accepted for its accuracy. No liability is accepted for any

# BEVERLEY BLARNEY

1100 copies each month

### ADVERTISING RATES

Size A: (~122 x 180mm)	\$82.00 GST inc
Size B: (~122 x 89mm)	\$41.00 GST inc
Size C: (~60 x 89mm)	\$25.00 GST inc
Size D: (5 lines)	\$ 8.00 GST inc
Size E: (3 lines)	\$ 5.00 GST inc
Size F: (122 x 135mm)	\$62.00 GST inc

Club notes etc. are free of charge

**The deadline for the next  
Beverley Blarney is 4pm  
Friday 23 June 2015**

Shire of Beverley  
PO Box 20, Beverley, 6304

Tel: 9646 1200 or Fax: 9646 1409  
Email: [blarney@beverley.wa.gov.au](mailto:blarney@beverley.wa.gov.au)



The best thing in life is finding someone who knows all your flaws, mistakes, and weaknesses and still thinks you're completely amazing.  
-Unknown

**Do you have an event that you would like to advertise in the Events Calendar?**

**Simply email dates and details through to the address below  
[blarney@beverley.wa.gov.au](mailto:blarney@beverley.wa.gov.au)**

EDITION	DEADLINE DATE
JULY EDITION 2015	TUESDAY 23 JUNE 2015
AUGUST EDITION 2015	MONDAY 23 JULY 2015
SEPTEMBER EDITION 2015	WEDNESDAY 24 AUGUST 2015
OCTOBER EDITION 2015	WEDNESDAY 23 SEPTEMBER 2015
NOVEMBER EDITION 2015	FRIDAY 23 OCTOBER 2015
DECEMBER EDITION 2015	MONDAY 23 NOVEMBER 2015
JANUARY EDITION 2016	THURSDAY 17 DECEMBER 2015

**1100 copies each month**

# Beverley Blarney



**Advertise your business here!**

# What's on in Beverley in June 2015

Monday	Tuesday	Wednesday	Thursday	Friday	Saturday	Sunday
<b>1</b> Weight Watchers Bridge @ CWA Dance LEGO Club	<b>2</b> Men's Shed HACC Stay Active Quilting Garden & Tree Meeting	<b>3</b> HACC Ladies Golf Netball Training South West Outreach Team in Beverley	<b>4</b> Playgroup Line Dancing Junior Sports Training	<b>5</b> RECYCLE BIN Op Shop	<b>6</b> RSL Indoor Markets	<b>7</b>
<b>8</b> Weight Watchers Bridge @ CWA Dance LEGO Club KERBSIDE COLLECTION Historical Meeting	<b>9</b> Men's Shed HACC Stay Active Quilting St Mary's Society Meeting	<b>10</b> HACC Ladies Golf Netball Training	<b>11</b> Playgroup Line Dancing Junior Sports Training Friendly Club Meeting CWA Meeting	<b>12</b> Op Shop LIVE Band at Freemasons	<b>13</b> Junior Sports in Beverley Avondale Monster Cake Stall Showjumping Open Training Day BORMSA Twilight Autocross	<b>14</b> Football in Beverley TALK TO A MATE BHPC Rally
<b>15</b> Weight Watchers Bridge @ CWA Dance LEGO Club	<b>16</b> Men's Shed HACC Stay Active Quilting	<b>17</b> HACC Ladies Golf Netball Training	<b>18</b> Playgroup Line Dancing Junior Sports Training	<b>19</b> RECYCLE BIN Op Shop	<b>20</b> AVONDALE Open	<b>21</b> AVONDALE Open
<b>22</b> Weight Watchers Bridge @ CWA Dance LEGO Club	<b>23</b> Men's Shed HACC Stay Active Quilting COUNCIL MEETING	<b>24</b> HACC Ladies Golf Netball Training	<b>25</b> Playgroup Line Dancing Junior Sports Training	<b>26</b> Op Shop	<b>27</b>	<b>28</b>
<b>29</b> Weight Watchers Bridge @ CWA Dance LEGO Club Family Day Care Workshop at CRC	<b>30</b> Men's Shed HACC Stay Active Quilting Farewell Morning Tea for Dorothy					