



BEVERLEY BLARNEY

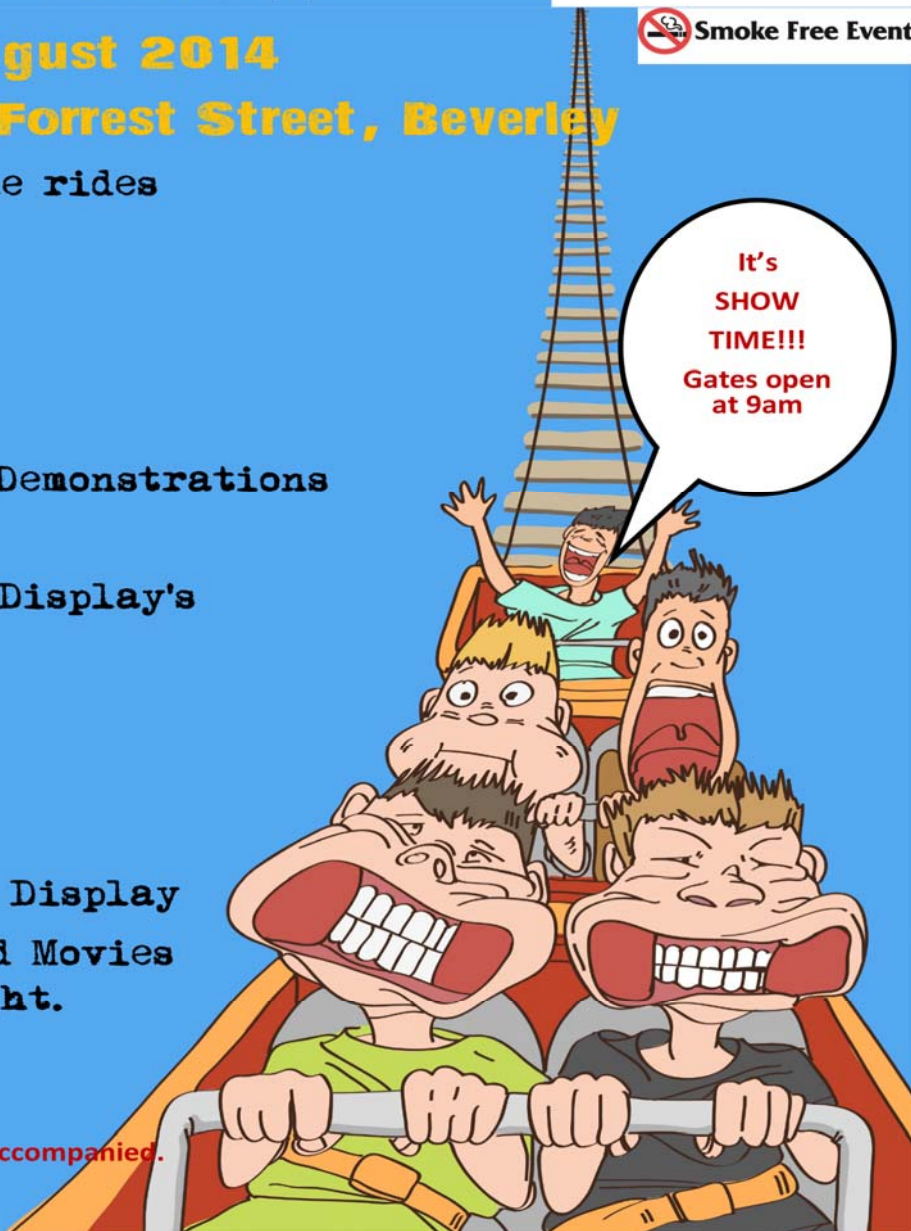
Edition 358
August 2014
No Charge

138th Annual ACT - BELONG - COMMIT BEVERLEY SHOW

Saturday 23 August 2014
Show Grounds, Forrest Street, Beverley

- Big rides and little rides
- Gym bus
- Climbing Wall
- Animal Nursery
- Face Painters
- Working Sheep Dog Demonstrations
- Roaming Magician
- Car and Machinery Display's
- Stalls and Food
- Show bags
- Side Show Alley
- Exhibition Shed
- Water Conservation Display
- Fireworks, Band and Movies
for the kids at night.

\$25 per family membership
\$13 Adult, \$5 Pensioner
 Children 16 and under go free if accompanied.
\$5 unaccompanied children



Proudly supported by



Proudly supported by State Government
*When accompanied by an adult. Terms and conditions apply.

FREE ENTRY for children*



York & Districts
Community Bank® Branch



BEVERLEY
HYDRABOOM





President Report August 2014

Budget 2014/2015

The Shire of Beverley 2014/2015 annual budget was adopted at the July Council meeting. An overall rate increase of 6% has been endorsed, enabling existing service levels to be maintained, a number of new initiatives to be funded and a continuing allocation of funds to renew the Shires infrastructure. The increase has been kept in line with the rating strategy and equates to a 4.2% five year average. Please note: rating is based on property valuations undertaken by the Valuer General and individual rate notices may vary from the 6% overall increase.

Minister for Local Government Visit to Beverley

The Hon. Tony Simpson MLA, Minister for Local Government; Community Services; Seniors and Volunteering; Youth, recently visited Beverley following an invitation to view Avondale and meet with our Council to discuss Beverley's experience with the Regional Transition Group process. The Minister, accompanied by his Media Advisor Deanie Carbon, spent some time at Avondale followed by a (whirlwind!) tour taking in the new recreation facility, Town Hall, Court House, Railway Station Cultural Precinct and Beverley Mens Shed prior to meeting with Council. An array of topics were covered when meeting with the Minister including Local Government Amalgamations, impact of Rural and Regional Heritage on Local Government finances and Tier 3 rail.

Visitor Information Centre

Council has supported a change in which the Community Resource Centre (CRC) will take over the administrative role of the Visitor Information Centre and assist with future tourism planning initiatives. The current Tourist and Development group have resolved to wind up and Community Development Officer Kathryn McLean has been facilitating this process as well as the establishment

of an MOU between the Shire, CRC and volunteers to provide guidelines for the future. This change will enable the Visitor Centre volunteers to focus on the important task they undertake in greeting and assisting visitors to our town.

Stocking Policy

Council is establishing a stocking policy for properties of certain zoning areas in the town boundary. This is part of a process to provide clear guidelines for those wishing to have animals on larger blocks which are zoned residential.

Roads

There have been various issues with gravel roads within the Shire following recent rainfall events. Your patience and care in driving according to the road conditions is requested, as generally after a day or so normal road conditions return. Whilst the rain is a terrific plus for the districts' agricultural industry, heavy vehicle traffic under wet conditions on these roads is not, which may need to be addressed in the future.

The 10 year road programme for the upgrade and renewal of various Shire roads is reviewed annually. Funding to undertake all the desired works is an ongoing challenge. Cr Keith Murray is Councils' Regional Road Group delegate and Cr Jim Alexander is Councils' Wheatbelt Rail Retention Alliance (Tier 3) delegate. Closure of the Tier 3 between Quairading and York will

be watched closely as whilst the Mawson and Westdale roads (Shire roads) will not be an officially identified replacement route for truck movements, they do provide a more direct route to Kwinana.

The Hon. Dean Nalder MLA, Minister for Transport; Finance, is due to meet with Councillors in Beverley by the end of July.

Avondale

Welcome to new Avondale Warden Glen Langlands who has joined the Beverley community from the Eastern States, and who I believe has hit the ground running! The Hon. Christian Porter MP requested another visit to Avondale during his recent electoral trip to the area, meeting with representatives from the Avondale Farm Project Association (AFPA), National Trust and Shire for an update on current projects and activity as well as the ongoing challenge to secure funding and assistance for the property. Christian has been very supportive of Avondale, and the Clydesdales worked their magic on his staff who hadn't visited the property before.

Beverley Show Saturday 23rd August 2014

The Shire of Beverley will again have a stand at the Beverley show with Councillors and staff on hand through the day to discuss Council issues and provide an array of Shire related information. See you at the show!

Dee Ridgway - Shire President

SHIRE OF BEVERLEY



SHIRE OF BEVERLEY POLICY INITIATION

Pursuant to Section 7.6.2 (a) of the Shire of Beverley Town Planning Scheme No. 2, notice is hereby given of Council's initial adoption at its 22 July 2014 meeting, of a Draft Stocking Rates Policy applicable to land zoned Residential R2, R2.5, R5 as well as land zoned Rural Residential and Rural Smallholding, within the Shire of Beverley.

Submissions are invited on the draft policy with all comments to be submitted to PO Box 20 Beverley WA 6304, to be received by the Shire by 15 August 2014.

A copy of the policy can be obtained online at www.beverley.wa.gov.au, and copies are available for public viewing during normal business hours at Shire Offices, 136 Vincent Street, Beverley.

For further details regarding this matter, please contact Shire Planner, Stefan de Beer on 9646 1200 or planner@beverley.wa.gov.au.

Stephen Gollan
Chief Executive Officer



RATES

Within the next month property owners will receive their Annual Rates Notice. This explains there are two options to paying your rates –

Option 1 is to pay in full by the due date and receive a **10% discount**.

Option 2 is to pay in four instalments, with the first payment due as above. This option attracts several additional charges which are explained on your rates notice.

Please note that, as a last resort, any outstanding rate balances will be handed to a debt collection agency to recover the amount owing.

In certain circumstances a special payment arrangement can be entered into. If you are having **problems paying your rates**, please contact the Rates Officer on 08 9646 1200 to explore your options.

If you require any other rates information please contact the Rates Officer on 08 9646 1200 or pop into the office, Monday to Friday, between 9am - 4pm.



SHOWERHEAD EXCHANGE OFFER at the Beverley Show

2014 BEVERLEY RESIDENTS FREE SHOWERHEAD SWAP

Collect your application form at the Shire tent at the Beverley Show to receive your free water efficient 3 star rated showerhead.

The Water Corporation is offering a free showerhead swap to assist Beverley residents to REDUCE their water use and SAVE money.

To participate simply fill out your details on the form available at the Shire tent then call into the Shire office with your completed form and old showerhead during office hours Monday to Friday 8:30am – 4:00pm.

Terms & conditions apply. For full terms and conditions before the Show please contact Kathryn at the Shire ph 96461200



COMMUNITY GRANTS

Does your incorporated club have a project that needs some extra financial help to get it underway?

The Shire of Beverley is offering grants to not-for-profit community groups to progress their chosen interest. Eligibility criteria and application packages are available for collection from the Shire office.

The Community Grants will be open for submission from 8:30am Monday 7 July 2014 to 4:00pm Monday 11 August 2014. Late submissions will NOT be accepted.

All terms and conditions are included in the information and application package.



GOOD SAMARITAN CLOTHING BINS

The Shire of Beverley has been advised by Good Samaritan Industries that they are no longer servicing the Beverley area, and therefore unfortunately the Good Sammy clothing bin has been taken away.

Cleaning tips

The following tips will help to ensure your difficult-to-clean eligible farm chemical containers will be accepted for recycling at your local *drumMUSTER* collection centre.



Suspension concentrates (Atrazine, Simazine, etc)

- ✓ Rinse your container immediately after use to ensure any chemical residue does not dry



- ✓ Use methylated spirits to remove dried residue. If this doesn't work, fill the container with water and soak for at least 24 hours before rinsing.



Oil-based chemicals (ULVs, LVs)

- ✓ Follow specific instructions on the product label or contact the manufacturer for further assistance



Other chemical residues

- ✓ Rinse container immediately after use as all chemical residues are much harder to remove when dry
- ✓ Some containers may require additional rinsing (more than three rinses)
- ✓ A brush or high pressure hose may be required to clean stubborn or dried chemical residue



- ✓ **ELIGIBLE CONTAINERS WITH DIRT, RUST AND DYE STAINS ARE NOT CONSIDERED HAZARDOUS AND ARE THEREFORE ACCEPTED AT *drumMUSTER* COLLECTION CENTRES**

For more information on container cleaning contact your local Agsafe accredited farm chemical reseller or visit



www.drummuster.com.au
drumMUSTER

drumMUSTER makes it easy

Recycling your eligible farm chemical containers with *drumMUSTER* is easy - all you need to do is follow these simple steps:



- ✓ Triple or pressure rinse your chemical containers **IMMEDIATELY** after use



- ✓ Pour the **RINSE WATER** back into your spray tank



- ✓ Make sure **ALL** chemical residue is removed

- ✓ **REMOVE LIDS** to allow your containers to **DRY** thoroughly. Take lids **SEPARATELY** to collections



- ✓ Metal containers should be **PUNCTURED** from the top through the bottom



- ✓ **DELIVER** your eligible clean empty containers to your local *drumMUSTER* collection centre

For details on *drumMUSTER* collections in your area contact your local Council or visit the *drumMUSTER* website at:



www.drummuster.com.au
drumMUSTER

SHIRE OF BEVERLEY

drumMUSTER



MONDAY
22 SEPTEMBER 2014

BOOKINGS ARE ESSENTIAL
PHONE 9646-1200

Drums must be:

- ◆ Triple rinsed
- ◆ Lids to be removed
- ◆ Steel drums must be punctured through

BEVERLEY SOARING SOCIETY



You may have been flying before, but have you ever soared silently above the clouds, with the winter colours of the Beverley landscape stretching out like a blanket beneath you.

Gliding over the Beverley town site, with the Beverley Soaring Society, will leave you wanting to experience this breathtaking adventure, time and time again (or maybe even learning how to fly a glider yourself!).

AUGUST SPECIAL

Beverley Residents
can glide for the
special price
of \$150



Bookings essential
Phone 0407 385 361

Please present this article to
redeem this special offer

BEVERLEY SOARING SOCIETY
Beverley Aerodrome
Bremner Road, Beverley

Shearing Contractor

Tamryn Abrahams - Powell

I will travel to do your
shearing and crutching

Ring Tamryn

0418 951 635



BILL CHAMBERS

**Chartered Accountant
&
Registered Tax Agent**

Tax return preparation

Financial and accounting
advisory services

Office hours:
Wednesday
9.15am - 5.00pm

129 Vincent Street, Beverley
9646 1566 (Monday - Friday)

Pinefield's of York



**Drafting and Design
All Types of Building Construction
Engineering Certification
Energy Efficiency Assessment**

**30 Years experience
in the Avon Valley**

**Gary Byfield
0414 885 338**

gwb151@gmail.com

Happy 80th Birthday

to
Barrymore Ferguson
for 12 August!

Congratulations and Best Wishes
From your Family and Friends



Happy 40th Birthday

Neil Moulton
for Wednesday 20 August

Love and best wishes from all of your
family and friends
XOXOXO



Double Birthday Wishes

To Natalie Ashworth who turns 46
on 01 August and Wayne Ashworth
who celebrates turning 52 on
04 August.

Lots of Love always your family and
friends xoxox

St. Mary's Anglican Society Meeting

Date: Tuesday 19 August
Time: 1.30pm
Where: Church Hall



This is a long time overdue. I wanted to thank everyone who has been there to help myself and Merv in the last year. Our health has been up and down but the help from all of you with in the community has been amazing. All of the ambulance crew, Jenny and John, all of you whom I forget, thanks are not enough. My flight, though I don't remember was as smooth as you could have made it. To my brother Colin, thankyou for fussing over me when you were recovering too. To my neighbours Rose and Winston who checked on me at least once a day while I wasn't so well. Your care was and is appreciated not just by me but my children. Your friendship is valued truly. To the truly wonderful HACC staff - thankyou. To EVERYONE, I may have forgotten, forgive me.

We thank you ALL very much.
Annette and Mervyn Davis.

Thank you

*To everyone who kindly
contributed to the knitting
and sewing day on 9th July.
Your time and efforts are
greatly appreciated.
St. Mary's Anglican Society.*



Harvest Truck Driver

HC licence and
good work ethic essential.
Harvest experience
desirable.
Ph: 0428 466 246



FOR SALE

Hyundai Lantra car in good order
1996 model, licenced
\$2,200 inc GST ONO
Phone: 9642 6079 after 6pm

BATTERIES FOR SALE BEVERLEY

All sizes for cars, trucks, tractors available.
N70Z & 750 CCA \$130, To fit Commodore
and Falcon \$100. Call Mark 0409 194 434
BULK DISCOUNT FOR FARMERS

FOR SALE

2004 Holden Astra
75,000km good condition
\$5,000.00 ono
Ph 9646 0401 or 0418 210 559



VALENTI LAWYERS
PROPERTY & COMMERCIAL LAWYERS



"Valenti Lawyers will be at the Quairading Community Resource Centre on Wednesday, 27 August 2014 from 10.00 am to 5.00pm to take instructions in relation to estate and succession planning, property and commercial matters.

Any person wishing to obtain advice in any of these matters should contact our Kim Valenti's personal assistant, Simone Poor, on (08) 9224 6222 to arrange an appointment or feel free to call in on the day.

Please visit our website

www.valentilawyers.com.au

Friendly Club

There will be an
August afternoon

Place: Alex Miles Lodge
Date: Thursday 14 August
Time: 2pm
Hosts: Dale Ladies

All welcome to come along.

Sylvia Seddon
9646 1072



BEVERLEY AGRICULTURAL SOCIETY



It's on again. The Agricultural Society is sponsoring a prize just for entering the competition. **You could win an iPad mini.** This year all shed entries will go into the draw and one lucky person will win. The more entries you have the more chance you have to win.

So it's time to dig out the apron and bring out the family secret recipe handed down from grandma for marmalade or chocolate cake or maybe it's tomato relish - whatever your speciality – it's time to start practising so you will have the perfect product to enter into the show. If your talents lean towards the arts or crafts, now is the time to start creating your award winning *piece d' resistance*.

Photo fanatics now is your chance to shine. We have more classes than ever this year. Find those great shots you took during the year and fill in an entry form.

The schedule will be out soon so you can start to fill in those entry forms. Alternatively you can go online to www.beverleyagsociety.com to look at the schedule and download an entry form.



The sausage sizzle and cake stall we held on Saturday June 28 helped raise funds for the show. We appreciate your support. Special thank you to everyone who donated baked goods and raffle prizes.

Congratulations to the following winners.

Load of wood: Pat Green A69
Money Tree: John Lane Red A24
Sunday roast: Sue Collins Blue A32
Guess the lollies winners were:
M & Ms: Gemma Ridgway (2314)
Jelly Beans: Maree Thornton (679)
Frogs: Dalene Davies (356)
Jaffas: Angie @ the Bakery(1005)

CORRECTION ADVICE - SHOW SCHEDULE

Please note that page 4 of the 2014 schedule should read, CHILDREN 16 and under FREE (when accompanied by an adult).

HANDY HINTS

For would be winners in the next Act – Belong - Commit Beverley show.

These tips were given by Aileen Hickey from the CWA who was a well known instructor and show judge.

Schedule: Check the rules the judge has to judge according to the schedule, so you must enter according to the schedule, e.g. 3 distinct varieties means 3 different varieties.

Collection : 2 or more is a collection.

Preserves: No manufacturers' names, trademarks, etc. on jars and lids. If painting lids, do so well ahead, say 12 months, to prevent paint smell. No rust inside lids. Clean and dust jars. To present for judging, do not use wet cloth to clean jars, use paper towel. The best thing for polishing jars is an old stocking.

Jam: Must be properly set. The jam must not move if you tip the jar of jam upside down. No bubbles in the jam. Labels should be in proportion to the jar, not wrapped around the whole jar. Place label 2/3 to 3/4 up jar, not at the bottom of the jar.

Cakes: Line tins properly. Prevent bubbles in the cake by mixing smoothly. No rack marks on top or bottom of cakes - this will lose points. If your cake cracks across the top it is usually because the mixture is too dry or oven temperature is not correct.

Scones: Scones should be uniform in size with even colour and no sogginess. Dust those scones – no remains of raw flour allowed.

Flowers: Specimen: One only, no buds. Remove buds carefully.

Bowl: Width is 1½ times height. Opening is half the width. A container is anything that is not a bowl.

Arrangements: Height - 1½ times above the vase. Present on a mat, doyley, etc.

GOOD LUCK WITH YOUR ENTRIES.

Teresa Reid, President





Musical Notes



Kellie Shaw is a well-known personality in our community and a great exponent of the Act – Belong – Commit message. While teaching at Beverley District High School she has encouraged students in developing their interest in both drama and music. As an extension of her own interest in the arts, Kellie has taken on the role of choir master and will be leading the school choir in performing at the opening ceremony on show day Saturday 23rd August.

In a recent interview Kellie explained what motivated her to become involved in the school choir. The importance of bringing more music into student lives was a primary influence in Kellie's decision to take on the role of choir leader.

The choir practices each week on a regular basis and gives the participants a safe environment for exploring their talent and giving a sense of belonging and pride in representing the school. According to Mrs Shaw the commitment to practising each week encourages a sense of responsibility in students to each other and the choir as a whole. Her reward is the enjoyment of seeing the children challenge and inspire each other especially when they perform in front of an audience.



Teresa Reid, Beverley Ag Society



FREE ENTRY FOR CHILDREN 16 AND UNDER*

The society has always endeavoured to keep the cost of attending the show affordable for everyone with concessions available for members with children and gate tickets for pensioners and children at \$5.00 each.

In line with that policy we are pleased to announce that the society has been successful in applying for a grant from the Department of Agriculture and Food Western Australia funded by Royalties for Regions. The grant will subsidise entry of children 16 and under when accompanied by an adult.

This means entry for children 16 years and under will be free if accompanied by an adult. This is an exceptional savings for families.

With rising costs to insurance, entertainment and fuel for generators the society has been unable to avoid some cost increases. The new price for adult entry is \$13.00. The concession rates for pensioners and unaccompanied children remains at \$5.00.



FREE ENTRY for children*

Proudly supported by State Government

*When accompanied by an adult. Terms and conditions apply.



BEVERLEY AGRICULTURAL SOCIETY - MEMBERSHIP REMINDER

To members.....

Tickets are now being sent out so don't forget to renew your membership so your tickets can be sent out to you in time for Show Day. For those choosing to pay by Direct Deposit, please remember to post your membership renewal form back to us also, so we know what tickets are needed.

To those thinking of becoming members for the first time..... it is not too late to do so.

You can download a form from our website www.beverleyagsociety.com or fill in the form included in the Blarney and post to PO Box 108, Beverley WA 6304.

Thankyou.

One of the main issues that confront families and relationships is trying to achieve a balance between work and home life. The word “balance” tends to indicate a 50/50 arrangement however that’s a big ask today. It’s more appropriate to talk about “work and home integration” to ensure we don’t get too out of balance.

There is no one “perfect” balance because every family is different and every work place requirement is different.

The big problem for farmers is the work place is also home and that makes it easier to be a 7 day work week and often 10 plus hours a day (after all the phone calls and bookwork gets done). Those who leave home and go to a separate workplace each day may find it easier to close the door and leave work behind but unfortunately for many this too is also difficult.

When machinery is not balanced it will wear and break, this can be the same consequences for family and couple relationships. All work and no play is problematic. Those busy times are necessary and explainable but we need to ensure we have a catch up.

So what happens when we are not integrating work and home life in a more balanced way?

- A disconnect can start between our wife/partners, dad and the kids, friends and relatives.
- Physical and mental well-being can be affected by issues like stress, anxiety, depression and fatigue.
- Resentment starts to infiltrate as perceived inequalities are felt around home duties, parenting, intimacy and workload.
- Feelings of disrespect, being ignored, being taken for granted, even feeling unloved may arise that can erode the quality of healthy family and couple relationships.

How do we get the balance right?

- Make couple time to communicate how you are each feeling.
- Keep a tab on work time verses home/family hours.
- Talk to your wife/partner/kids about your challenges of transiting from work to home, so they can see your perspective and for you to see things from theirs.
- Talk/communicate with your partner about the type of parents you both want to be.
- If you are a new Dad, take time off to help care and know your baby, help at night with feeding, dressing and that awful job of changing nappies.
- Allocate “dad time”, this can be everyday routines like taking/dropping kids off to school, the bus stop or sport. This will help develop and maintain connection with the kids by showing interest in their lives.
- Be involved with the kids’ activities, homework, help out on birthdays and special events (kids needs will change at different ages).
- Kids want to tell you about stuff, be interested, stop and listen, give hugs and attention.
- It is also very important to leave some regular time for yourself.

How do I switch from work to home mode?

- Arrange your day to do the most difficult tasks first instead of at the end.
- Consider if it might be worth staying a little longer at work to finish up a task instead of bringing it home with you.
- Develop a ritual or routine to help you move from work mode i.e. change out of your work clothes and shower when you get home.
- Switch your thinking to the kids and home as you leave work, putting work to rest.

Being stressed and tired from a hard day’s work can contaminate the time you spend with your children. The family will know if you are present with them or if your head is elsewhere.

If your wife/partner/kids feel second best, feelings about their own self-worth can be affected.

To finish here are a couple of questions you might like to ask yourself - *“what really good memory would you like your children to have of you? And “when comparing your own upbringing what would you do differently as a Dad?”*

Cheers

Tim and the Team

Regional Men’s Health.
We will be at the Mad Men’s Muster
in Beverley on Friday 29 August.

Mad Men's Muster



Friday 29 August 2014



Guest Speakers Paul Haselby and Mickey Arthur

Comedy Trio 'The Suns of Fred'

Smokey Delights from the Smoke Shack

Regional Men's Health

Proudly supported by

life

WA Suicide Prevention



When: Friday 29 August 2014

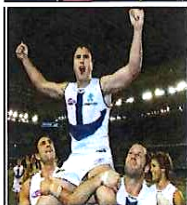
Where: Beverley Town Hall, Vincent Street

Time: Doors open 10.00am to 2.30pm



RSVP for catering purposes only on 9646 1600

No Charge and No Chicks



BEVERLEY TOURIST BUREAU AND VISITORS CENTRE

July, to date has been busy in Beverley with an increase in visitor numbers. No doubt due to school holidays and to keep our doors open has been difficult with two people away on holiday and another away due to family illness. Thank you to the remaining volunteers who have rallied around and covered extra hours. During the month we had a tour bus of seniors from Midland who thoroughly enjoyed their time in Beverley especially the time they were able to spend at Avondale. There have been so many good comments about Avondale being open even with limited hours. Hopefully the word will spread and people will start revisiting their favourite haunts again.

Last weekend whilst on duty we had a group of very enthusiastic people from a 4WD club who have already booked into Beverley for the weekend of 29th/30th of November. They said they want to spend the whole weekend in Beverley doing walks visiting Museums, Art Gallery doing a Quiz about the Town, going to the Pool. They were a really happy group so we armed them with maps and pamphlets and they went away armed with plenty of info to fill in their weekend.

Our handing over of our business side to the CRC is progressing and all the Volunteers will be happy when this is finalised.

As ever we thank our Volunteers for their work and uncomplaining attitudes when they are required to work extra time to keep our doors open.



Beverley Sub Centre

Wanted: Vehicle Maintenance Officer

St John Our sub centre is in urgent need for someone to fill the position of Vehicle Maintenance Officer. The position isn't difficult but it is important as our ambulances need to be maintained and ready for service when needed. Our volunteer ambulance officers are already very busy people, which is why we need someone new who can take on this position.

For a full job description you can contact John Lane on 96461306 or Peter Jenkin on 96461385 a/h. Alternately, you can email the sub-centre on bevsja@westnet.com.au

Volunteers needed!

Our sub-centre relies on locals to volunteer their time to run this vital community service. To retain this service we need people like you who care enough to get involved. At present, our volunteer numbers are low and there are some who will be retiring in the next few years. So, we are looking to recruit and train new volunteers who will be able to ensure our community has access to a reliable ambulance service in the years ahead. We have a new Mk6 ambulance arriving in a few months and we would like to see younger people step-up to become trainee ambulance officers and take advantage of the latest equipment available.

A volunteer St John Ambulance Officer is a very important person, someone who donates a few hours of their time to put something back into the community. To find out how you can become part of the Beverley St John Sub-centre team, contact our Secretary, Sharyn Morrell, on 96460646 or send an email to bevsja@westnet.com.au

Did you know?

In the year ending 30th June 2014, our sub-centre volunteers attended a record 187 callouts and travelled a combined total of 16,487 kms. Our dedicated volunteers are doing an amazing job, for you!

Emergency Medical Information Booklet

We now have a fresh supply of these books available.

Record your personal and medical information so that it is ready for use in an emergency. These booklets are small and in plastic magnetic covers, so they can be placed conveniently on the front of your fridge. To ensure accuracy, have the information checked with the help of your doctor, carer or close relative, and remember to keep it updated; ie: if your medication has changed. These booklets are available for a gold coin donation. See Volunteer Ambulance Officer Jenny Rayner at Beverley Farm Services, Forrest St.

Busy Bee – Sunday 17th August

It's that time of year again when we need to get together and tidy up the sub-centre grounds. Could all our volunteers please consider coming along in a show of comradery, to get the job done. Remember; many hands make light work. As usual, a cooked breakfast will be provided to get you started!

WG CEILINGS

Specialising in:

- Gyprock Fixing & Flushing
- Cornice Installation & Repairs
- Sagging Ceilings & Removal
- Cracks in Ceilings & Walls
- General Flushing & Repair Work

Phone Wayne Giesemann

0413 091 109

BEVERLEY BAKERY

Open Thursday to Monday from 6.00am
Closed Tuesday and Wednesday

*New in store
Ciabatta Bread*

Phone Angie for orders 0427 106 742



Beverley Football Club

invites you to join them for a

Vintage Horse Racing Evening

**Get out your
vintage glad rags
for this bow tie
event.**

**Fashions of the
fields for both the
Blokes & Ladies**



**Best dressed prizes
on the night**

**Dinner & full bar
facilities available**

5:30pm till late

Saturday 2nd August 2014

Enquiries: Chantelle Meade

Mobile: 0429 418 576 or Email: chantellemeade@bigpond.com

Station Gallery



Artist-in-Residence

Marlish Glorie a West Australian novelist and playwright, who has published a number of books, was our artist in residence for July. Marlish enjoyed her time in Beverley, holding a free writing workshop. She is planning to return in May 2015 with three other writers.

LINO CUT WORKSHOPS - suitable for experienced artists and non artists looking for that first art project. Suitable for Christmas card making or other crafty ideas.

AIR: James Larkins

WHEN: daily from 9:30am - 2:30pm from 16th September to 29th September

WHERE: Station Gallery

PLEASE BRING: own carving tools (to share!) and lunch. Some tools supplied.

COST: \$60 per session includes lino, ink, paper (payment required by 9th September 2014)

CONTACT: James Larkins on mobile 0411 186 483 or aadi@bigpond.net.au

YOUTH WORKSHOPS - suitable for youth up to 17 years (inclusive). Both after school and weekend workshops will be held by Charlotte O'Shea during her stay in November. The program will involve recycling local materials to construct 3D art to display around the town.

Artists in Residence programme for the remainder 2014 and 2015:

September - Dave & Sandra Conlin - watercolourist, and James Larkins - printmaker (Perth)

October - Mervyn Beamish - artist (Perth)

November - Jill Ansell - painter (Perth), Charlotte O'Shea - digital and public artist (Perth)

February 2015 - Graham Milson - painter (England)

As can be seen August and December are not booked as yet. If anyone one knows of an artist (visual, performing, writer, musician) who would like to experience a residency here please inform them of this vacancy and contact Artist in Residence Coordinator Marylou Hutchinson on 9647 1027 / 0427 085 511 or email: hutchinson@wn.com.au

To become a member of Beverley Station Arts Inc (Friend of the Station) please see treasurer Pauline at the Newsagency, phone 96461042. Membership forms can also be downloaded from www.beverleywa.com (NB cheques to be made payable to Beverley Station Arts) and send to PO Box 112, Beverley 6304.



Beverley Station Singers

While awaiting the return of Kelly Newton Wordsworth to further instil her zest into the arrangements for the Beverley Show on August 23rd and for the Choir Bash at the Platform Theatre on September 13th the Station Singers continued to practise fortnightly on their own. The Singers will now meet weekly until we have performed at the Beverley Agricultural Show.

Anyone interested in joining the choir contact Tracey Fleay - Mob: 0409 481 029 or E: traceyfleay@hotmail.com

Platform Theatre



Calendar of Events

Saturday 13th September - CHOIR BASH

Saturday 8th November - BEATLES / BLUES BROTHERS NIGHT

Friday 19th December - CHRISTMAS PARTY

If you would like to be included on the email list for notification of coming events (so you can forward to friends), email secretary Sarah Miller miller@reachnet.com.au

Station Gallery Open Hours

11.00am - 3.00pm

Thursday, Friday, Saturday and Sunday

Jenny Broun, President, Beverley Station Arts: 9646 1500 / 0419 040 063 / brounj@westnet.com.au

LIGHT UP THE STRIP!

\$ 35,000

\$ 30,000

\$ 25,000

\$ 20,000

\$ 15,000

\$ 10,000

CONGRATULATIONS and THANK YOU

The community of Beverley is to be congratulated on its efforts to fundraise in support of the Airstrip lighting project that will greatly enhance our emergency services.

Community groups, businesses and individuals have contributed just over \$36,000 to this project.

The project to install solar runway lighting is now underway.



**THANK YOU
FOR YOUR SUPPORT**

The Beverley St John Ambulance Committee would like to say a huge thank you to everyone for their support in getting behind this important project. Once again, you have been amazing! The collection tins will remain around town until this project is brought to completion.

Thank you!

Airstrip Lighting Fundraiser

R.S.L Silent Auction

Bids to be lodged at Post Office or in Red Post Box in a sealed envelope marked "Silent Auction" Please make sure your name and contact details are included.

1. Caravan – 12 ft aluminium pop top, current registration, phone 9646 0759 to arrange to view. Starting bid - \$800.00.
2. Avondale Scene painted by our own award winning artist – Pat Lane. On display in the Newsagency window.

***Bids close on 13th August
at 4.30 pm.***



Beverley St John Ambulance President Mr. John Lane gratefully accepting a donation for the Lighting Appeal from local business owner Angie from Beverley Bakery. Thank you Angie and Mark for supporting projects in the local community.



Beverley Playgroup

We are a fun place for babies and children aged 0-4 years old to come and meet new friends, learn from each other, problem solve, play with new toys and equipment, practise their social skills and learn the meaning of 'share'. It's not all about the children though, it's great for the adults to socialise, share tips and enjoy a cuppa as well. We are always welcoming new members. You are entitled to 3 free sessions before joining as a member. Children don't have to be brought in by a parent, it can be a grandparent, aunt etc. We'd love to see you at Playgroup!

This Month

The children have been busy and nearly completed all their 'Under the Sea' themed craft for the Beverley Show mural. There is one craft project to go, which we're going to put individual photos on. Make sure you come along to get this done in the 24th July & 7th August sessions. The adults have been just as busy, doing a fantastic job at a recent Busy Bee over the school holidays. Thank you so much to all the ladies who came and helped, a big clean-up was well overdue! We've got rid of any broken or unsafe toys and gave everything a much needed tidy and clean. Our President, Jenette, has been working hard on a grant application over the last month. Fingers crossed we are successful... as we've got a big shopping list ready to go! We have some fabulous new tables and chairs for the children now. Thank you so much to Carissa & Brett Shaw for sourcing, picking up and delivering these to Playgroup!

Baby Group

Our 3 baby group sessions have been and gone. Over the 3 weeks, we had the Speech Pathologist, Physiotherapist, Child Health Nurse, Occupational Therapist & Nutritionist come and talk to us. Thank you to those health professionals who visited us, we enjoyed these sessions and learnt a lot, like the importance of tummy time, ideas on how to talk and sing with your baby, how introducing solids has recently changed, how to read the nutrition labels on food, ideas for fussy eaters, the scales were there for a weigh in and a general overview of what they do and when we might need their services. The committee will discuss the possibility of running another formal baby group again later in the year. Just because the Baby Group is over, doesn't mean you can't come to Playgroup anymore! We've love to see the babies continue to come.

Boogie Roos

At the time of writing this, Sandra from Boogie Roos was about to visit on the 31st July. We are sure it would have been a super fun morning for the children. This interactive musical session has proven to be very popular in not only Beverley, but many towns in the Wheatbelt. The committee look forward to organising future visits with Sandra.

Coming Up

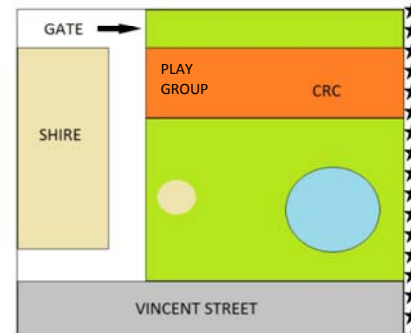
Father's Day is Sunday the 7th September. Be sure to attend Thursday 4th September, as we will be making something special for Dad ready for Father's Day.

PLAYGROUP SESSION DETAILS

Every Thursday morning from 9.30 to 11.30 am

(closed for school and public holidays)

- ✓ Located behind the CRC building (see map)
- ✓ For any child aged 0-4 years old
- ✓ Bring a piece of fruit to share, hat and sunscreen
- ✓ \$4 per family per week (for coffee/tea, craft activities etc...)
- ✓ \$30 / \$15 (concession card) membership fee per family per year (insurance cover for all Playgroups across WA)
- ✓ More info call Jenette on 0414 923 534
- ✓ Or find us on Facebook: facebook.com/BeverleyPlaygroupWA



Proud member of



So much to do at Playgroup...



Abigail Bailey on the climbing frame.



Play dough fun! Burke Murray & Ella Veitch.



Pippa Murray on the slide.



Sydni Garwood & Noah Shaw at the top of the fort.



BEEP BEEP!!

We might have to ask the shire for a round-about!

L-R: William Ellis, Jacob Petchell, Sebastian Kop & William Farr

...come and join the fun!

Rural Community Achievers Award



The Beverley Agricultural society is pleased to announce that Beverley's entrant for the Rural Community Achievers Award this year is Jenny Broun. She has been involved in many aspects of the community including school, sports and the arts. Jenny's interest in art has seen her participating as a steward and improving standards of practice in the local show and RAS art committee. Her innovative approach to both business and community affairs has seen her recognised with awards that acknowledge the impact her efforts have had in promoting tourism, the arts and developing a centre for learning and cultural enjoyment at the Beverley Station Gallery and Platform Theatre.

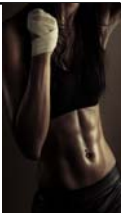
Jenny as President has spearheaded the renovation and development of the dilapidated old railway station to become a vibrant focal point of the high street and town which is a hub for performances, artist's workshops that attract attendance from around the district and a popular community venue for events such as weddings and award ceremonies. The introduction of the Platform Theatre has raised the profile of the town and given it a new lease of life as well as bringing in tourists dollars that benefit the wider business community.

Jenny Broun's ongoing dedication and contribution to the Beverley community, her strong work ethic, energy and drive combined with passion and infectious enthusiasm has seen her become a respected and successful community leader and we are proud to have her represent Beverley as a contender for this prestigious award.

Teresa Reid, President



GYM MEMBERSHIP Gym Memberships can be obtained from the Shire office or from www.beverley.wa.gov.au.
Beverley Gym, The Old Courthouse, Vincent St.



York Dental Surgery

Now located at the York Wellness Centre (Old Primary School) 6 Howick St York

Opening Hours: Mon, Tues, Wed: 8.30am – 4.30pm Thurs: 8.30am- 12noon
Dental surgeon Dr John Fenn has provided comprehensive dental care in York for over eighteen years.

With forty years of dental experience you can be assured of a professional high quality service as well as providing friendly and gentle patient care.

Come in and see John, Sue and Julie. Experience our new rooms and the benefits of friendly, gentle and proficient dental care.

To arrange an appointment please phone: 9641 2925 or email: yorkdental@westnet.com.au

Follow us on: www.facebook.com/yorkdentalWA



THE BLUE LINE

Beverley Police Station
57 Hunt Road, Beverley WA 6304

Hello Everyone,

First off a big thanks to Karen Berry for looking after the shop whilst I was away and for doing such a great job.

Secondly, welcome to my new partner and the newest police officer in Beverley, Nick Jacobs. Nick has arrived from some sleepy little place called Kalgoorlie which is over there somewhere apparently. I'd been beginning to think I had a personal freshness problem as I've been on my own since the other bloke left (I can't remember his name, who was he again?!). Anyway, I know a few of you have met him but rest assured we'll be out an about and I look forward to introducing Nick to more and more people in town. I know the good people of Beverley will welcome Nick and his wife Megan to our community and he's keen to integrate into the town and all it has to offer.

Anyway, what's been happening? Well, we've had a few instances of petty damage and a couple of burglaries which appear to be a few weeks (possibly more) old. Owing to the timescales I'm not convinced we are in the throes of a crime epidemic but it just goes to show that we can't rest on our laurels and we have to remain vigilant at all times. That said, whilst we need to remain vigilant we don't need anyone to become vigilantes. If you have a problem, come to us and let's see what we can do. Please don't take things into your own hands, you'll only end up copping something you don't need, want or deserve. Other than that all has been good and we are tracking very well.

As Karen mentioned in the last Blarney please be careful when out and about on the roads, particularly when it's wet and foggy. Keep a safe distance behind the vehicle in front and don't be impatient and over keen to overtake. If we all follow these simple rules we'll all be in a position to moan about the standard of driving rather than moaning about our injuries. I've managed to get hold of quite a lot of UV marker pens. They're the ones where you can write on your property without it being visible to the naked eye and can only be read under UV light. In the past these pens have proved invaluable in the identification of stolen and found property. I'll be dropping some off at the CRC but I'll have some at the police station so if anyone wants one or knows someone who might benefit from owning one then feel free to pop in to the station or stop us whilst we're driving or walking around.

That's about it for this edition of the Blarney. Before I go though I'd like to let everyone in on a personal secret. I have many pet hates but here's my top 3:-

1. Brussels sprouts. There is no doubt that these are the veggie of the devil.
2. Preston North End Football Club. If the devil supported a football team this is the mob he'd barrack for.
3. Dog poo. I'll explain.....

I've noticed quite a lot of dog business on the street with particular mention to Forrest Street near to the oval. At times it seems that this is an open toilet for our canine friends. The shire has provided lots of dog waste bags in and around town so there really is no need for dogs to be fouling the street. One particular dump was immediately below a dog waste bag point. If your dog has to go to the toilet then bag it and bin it. Remember a few Blarney's ago I mentioned it being unpleasant when my size 9's got covered in it? Well Nick has considerably bigger feet than me so imagine his annoyance if he ever stands in the stuff. Maybe dogs should wear nappies, a bit like poor Biscuit here (at least he has an excuse).....

Oh yes, one very last thing, a huge thanks to Isobel for taming the garden at the front of the police station. I'd love to claim the credit but it's all her work, I merely provided coffee and cake. Thanks Isobel, you're a star! OK folks, it's great to be back and I'm looking forward to the Beverley Show again soon. If it's half as good as last year it'll be great. Take care everyone, look after each other and if you need us for anything don't hesitate to get in touch.



All the best,

Ian & Nick.

beverley.police.station@police.wa.gov.au

Ph: 9646 3333



Comments from the new Avondale Warden

Hi everyone, I'm Glenn Langlands and I would like to introduce myself to community members I may not have met yet. The last Blarney confirmed my position as the new Warden at Avondale, so if you see me in town come up and say G'day or all come out and use the facilities here next open days on the 16th & 17th August. A big thank you to all the local business owners and community members I have met thus far for their welcome and support. Marian, my predecessor, and hubby Wayne deserve special mention for their tuition and guidance helping my transition into this new position to go as smooth as possible and also for all the wonderful gifts of furnishings they provided me with. Dina Barrett-Lennard has been a pillar of support and is always available for guidance or advice as needed (I'm going to add her to speed dial).

This is not a totally shameless plug but owners, management, staff and their families at Talbot Nursery have been wonderful to me since my arrival in Beverley. All committee members at AFPA have been absolutely fantastic. Avondale will remain a valuable asset to the whole shire of Beverley for at least a couple more generations with their commitment and I personally am looking forward to working with them for many years to come. Dwayne Haeusler and John Hawke are also tireless in their efforts. Greg Manzie and John Pratt are doing a fantastic job in the Museum with the re-interpretation of the collection. Mitch & Marian are out here 15-20hrs per week working with the big fellas but we need more horsie people with experience with Clydesdales and preferably harnessing. As you can see volunteers are not just here every 3rd Saturday of the month so if you would like to come out at other times arrangements can be made by calling 96461004 or 0427 477 734.

The July open days had visitors from Tasmania and Perth as well as quite a few locals with two coach loads from People Who Care who enjoyed their lunch on the verandah and in particular the scenic drive trail.

Dee Ridgway and her tireless campaigning and lobbying have resulted in the biggest news. V.I.Ps galore, but I'll let her tell you about this. By all reports these meetings have gone VERY well. Big changes will be happening at Avondale, congratulations and thank you Dee. Last but not least I am looking forwards to seeing all of you on October 18th but I'll let Jo Johnson tell you about this upcoming event. Avondale is unique in its own right with the partnership between Beverley Shire, AFPA volunteers and the National Trust. Looking forward to working with you all and thanks for your support.

Bush Dance

Keep Saturday 18th October free for a great night out at Avondale. The Mucky Duck Bush Band will be with us at Avondale Discovery Farm to hold a Beverley Bush Dance. We will be looking for a few volunteers to help out with: Setting up of the venue, bar work, sausage sizzle, car parking etc. This promises to be a great night out so get your dancing shoes ready, watch out for the advertising and get in quick to buy your tickets. If you have any queries or suggestions, please give Jo a call on 0417 951 513.

Clydesdales

The work associated with keeping Robbie and Comet includes: exercising, feeding, grooming and harness training and practice. This has now fallen to one or two volunteers to do all the work and we would love to have a few more volunteers to assist with these satisfying and fun tasks. If you are not too sure about your skills with the Clydesdales, we may be able to organise some training for a small group of volunteers through the Clydesdale Association. If you are keen to assist or would just like to discuss the options, please give our Volunteer Coordinator Valda, a call on 0418 902 434.

Natway Furniture & Constructions

ABN: 62 824 726 465

Wayne & Natalie Ashworth

Qualified Carpenter & Joiner Tradesman

- General Building Work
- Furniture Construction & Restoration

27 Brooking Street, Beverley

Phone: 08 9646 0159

Mobile: 0417 973 415 (Wayne)

Mobile: 0429 491 039 (Natalie)

ARCHITECT AT LARGE

Appointments 0429 421 287
rpecheva@rpearchitect.com.au
www.rpearchitect.com.au

New Houses | Additions & Alterations
Live Your Dream Life | Love Where You Live

Professional Expertise & Personalised Service
Accredited Design in the Central Wheatbelt

Rosalie Pech Eva Architect





EAST END STUDIO



~ *vibe from the studio* ~

School holidays are over and the Studio walls could barely contain the joyous sound of enthusiasm from a bunch of eager kids who signed up for the workshops.

The little ones; pre-primary to year 2's cut out, decorated, stamped, stencilled and fashioned clay fossils with the theme of "Art-O-Saurus". An hour and a half of organised chaos, whilst a dozen or so Mums took time out together in Beverley's own Café Strip, a win win for all really.

Year 3 to 7's discovered the freedom of "Moving Reality" in art, with an introduction to the Surrealist movement and learning the technique of how to draw dripping liquid. Others had a fantastic time with pattern; designing paisley cows with daisy tights and rosey udders, even a spider (man) dog. The final session was very productive and ten very proud youngsters carried home their finished canvases. Most importantly, they learned that there are no mistakes in Art...anyway, this was freedom for them all.

August is a big month for the Studio with a group coming from Perth to experience our beautiful town and the abundant hospitality, and we have a spring inspired painting workshop planned for September.

If you haven't been into the Studio yet, where have you been! There is art, yes, but there is also colourful hand painted furniture to buy, one-off design cushions and throws, beautiful handmade napery, some using fabrics sourced from France and Italy, there are unique home wares and gifts for sale. We offer an interior design service, and will take orders for hand made things for your house and home. You might find me covering a chair, painting a table, drawing an etching design, or working on a large canvas, yes, it is my studio – and it is a shop – happy people welcome!

EAST END STUDIO

A creative workshop space
to bring out
the designer in YOU!

UPCYCLING WORKSHOPS
DESIGNER DAYS
SATURDAY STUDIO TIME

East End Vincent Street
Ph: 646 77 263
Marlene



Local Health Advisory Group News (LHAG) - Beverley

On June 30 the LHAG met again in the Shire Chambers with the continuing aim for ongoing communication and interaction between WACHS staff and community members to develop workable solutions for local health service related issues.

The Local Health Advisory Group will reflect and have the capacity to represent community and consumer diversity.

The group has decided to publish in the Blarney a number of information notes on different health services over time to help inform consumers of how they can access and obtain services. The first information piece will be about PATS.

WACHS Wheatbelt Beverley Health Service, in conjunction with the local LHAG will be holding an information day at the local Beverley Agricultural Show. Health Service staff will be on hand to answer questions about health service delivery and how the health service can partner with consumers. This will provide local Beverley people with the perfect opportunity to find out more about our health service.

If any members of the community wish to join the Beverley LHAG group, please ring me on 0458460737.

Mr Keith Murray

Chairperson,

Beverley LHAG



Department of
Health



northam
optical



www.northamoptical.com.au

- Locally owned and operated
- A team with over 60 years experience
- Buy one pair get **one pair free***
- Great range of frames and sunglasses
- Friendly and efficient customer service
- Competitive prices
- Latest Technology
- Bulk billing to Medicare
- HBF and DVA Provider

*Terms and Conditions apply. See in store for details.

138 Fitzgerald Street Northam P 08 9621 1131
E northam.optical@yahoo.com.au

PRIMARY HEALTH SERVICES available to the community of Beverley

You can refer yourself or your child to the following health professionals:

Child Health Nurse - Phone 9646 3200 to make an appointment, Hospital Admin Staff will assist you in setting an appointment time (attendance Fridays).

Child / School Health – 9646 1210

Dietetics – 9690 1320

Occupational Therapy - 0429 466 224

Physiotherapy – a **Doctors referral is required** – Please send to PO Box 142, Beverley or drop referral to the Beverley Hospital (attendance Thursdays).

Podiatry – a **Doctors referral is required** Please send to PO Box 142, Beverley or drop referral to the Beverley Hospital (attendance Fridays) **.

Social Work – Phone 9690 1320

Speech Pathology – Phone 9690 1321

- Services are provided at the Primary Health Building, on the corner of John and Forrest Streets, Beverley. There may be a waiting time for services.
- These services are provided by WA Country Health Service and are free of charge. (Please note that the Podiatry Service is a private practice and is not free of charge - there is a fee at first consultation but the WACHS/Beverley Health Service do not get involved in taking fee payments – only assisting at receiving the referrals for appointment. The Doctor's referrals are usually faxed to the service provider, Como Podiatry, who contact the patient by phone and make an appointment).
- If you have any concerns about your own health or your child's health and development, please phone the relevant health professional to discuss your concerns. Alternatively, you can speak to the Child Health or School Health Nurse, or your GP, to discuss your concerns and to determine the most appropriate referral.

*Avon & Central Primary Health -
Promoting Healthy Lifestyles*



Beverley Health Service HACC **Day Centre Activities**

Once again the clients and volunteers of the Day Centre have had a busy couple of months.

May was spent finishing a beautiful heirloom quilt and producing items for a street stall, the proceeds of which were contributed to the BIGGEST MORNING TEA fundraiser at the school where a fantastic total of \$2,209.30 was raised for the Cancer Council of WA. Thank you to everyone who bought tickets in the raffle and supported us at the street stall and the small sale which was held at the school. Your contribution to this cause is very much appreciated.

The knitters of the Day Centre have been busy producing beanies for the "Beanies for the Homeless Project 2014" which is a project run by the South Perth branch of Soroptomist International. It was heart-warming to receive a thank you letter from St Patrick's Community Support Centre in Perth (who support people at risk of homelessness) and a photo of some of the recipients of our beanies. While we are continuing with our beanie knitting we are also making items to be sold at our Open Day / stall to be held in November at the St John Ambulance Hall. Proceeds of this stall will be donated to the Airfield Lighting Appeal.

In keeping with our music theme for the month of June, the ladies have had a visit and sing-along with the Beverley Bush Band and a performance by the Beverley line dancers. July we have had a focus on food and enjoyed a lovely lunch at our local restaurant...The Red Vault.

The men who meet at the day centre are continuing to enjoy their activities and outings. They visited the Albert Facey Museum at Wickiepin which followed on from watching A Fortunate Life. In July we have had a Railway theme for the men. We spent a very interesting, but very cold morning at the Railway Museum in Northam. Thankfully we were able to thaw out by an open fire and enjoy a roast dinner lunch at the Spencers Brook Tavern. By the time you read this we will have enjoyed a combined Ladies' and Men's Day celebrating Christmas in July.

A big THANKYOU is owed to the community members and groups who visit and entertain our clients and to our very loyal and hardworking band of volunteers who generously donate their time week after week. A successful day centre could not function without you.



HOW YOU MAY BE ABLE TO ACCESS SPECIALIST HEALTH CARE WITHOUT LEAVING HOME

Connecting patients in Beverly instantly with specialists in the metropolitan area is now a common-place practice saving people time, money and the hassle of travelling long distances to access health care.

Michelle Bauer, Health Services Manager and Director of Nursing at the Beverley Health Service is encouraging you to find out about these services and how specialist health care is just a click away.

"Telehealth technology is available at Beverley Health Service, which means more access to specialists, without having to leave your family or the community," says Michelle.

"We are really using technology to improve the way we deliver health services to you. You may be able to access specialist or consultant appointments through Telehealth. Our staff can help advise you of the services available, and where possible organise an appointment, saving you a trip to the city. "Some of the ways we use Telehealth include linking through video to Royal Perth Hospital's plastics unit for after-care for burns and wounds. We've also used it for paediatric consultations and for people who need to see an occupational therapist – all without leaving our four walls."

An information stall will be held at the upcoming Beverley Show. Michelle and her colleagues invite you to drop by to find out more about how Telehealth services are helping improve healthcare in our community.

OPENING HOURS

Monday – Friday, 8.30am – 4.00pm
132 Vincent St, Beverley WA 6304
P: 9646 1600 F: 9646 1295
E: beverley@crc.net.au
W: www.beverley.crc.net.au

EVENTS

Business Sundowner

The CRC will be hosting a range of events to assist local business owners. The aim of this free event is to give you, the business owner, the opportunity to network and market your local business, brainstorm initiatives to encourage and promote local shopping and also enjoy the company of fellow business owners, in a social and friendly atmosphere. Our invited guest speaker is Caroline Robinson from Solum Wheatbelt Business Solution and is the Executive Officer of the Wheatbelt Business Network (WBN). The WBN is a proactive organisation providing professional business services, networking, advocacy and support for local business within the Wheatbelt area. **Thursday 7 August**, 5.30 - 7.00pm at the CRC. Please RSVP for catering on 9646 1600 or email: beverley@crc.net.au.

Mad Men's Muster 2014

Friday 29 August, 10.00am - 2.30pm at the Town Hall.

Yes the blokes from the **Smoke Shack** are coming back!! We also have invited guest speakers **Mickey Arthur**, former Australian cricket coach and **Paul Haselby**, former AFL player. Plus for a few laughs for the day from comedy trio 'Suns of Fred'. This FREE seminar is fully catered, please RSVP on 9646 1600 or email: beverley@crc.net.au This event is proudly supported by One Life and Shire of Beverley.

Welcome to Beverley morning tea

Wednesday 10 September, 9.30am - 11.00am at the CRC

The welcome to Beverley morning tea is a new initiative from the centre, giving the new residents to town the opportunity to meet and greet members of the community, collect information about clubs and groups in a friendly and relaxing environment. If you would like to come along, simply register your details at the centre on 9646 1600.

CENTRE NEWS

Western Australian Government Information Booth is a FREE service where you can access information for the following State Government departments and agencies: WA Government, Environment and Conservation, Housing, Transport, Aboriginal Affairs, Lotterywest, Seniors, Agriculture, Mines and Petroleum, Disabilities, Youth, Utilities, Weather, Licensing, Education, Health, Sport and Recreation, Small Business and Do it online - fast access to sites. The booth is located in the front foyer of the centre.

Community Directory 2014 - 2015

The 2014 - 2015 Beverley Community Directory is due to be distributed in November 2014. If you need register or update your details, forms are available at the centre. We ask all community groups and club to update contact information. Businesses there will advertising opportunities plus discounts available for members of the CRC.

TRAINING

Skype Training

What is 'Skyping'? This is a fantastic way for keeping in touch with family and friends and also for parents who have children away at boarding school. The Skype app is available for most devices and if you need assistance in the setting up or the basics on how to use this great service then come along to our Basics of Skype training on Thursday 14 August from 2.00pm - 4.00pm, bookings are essential.

Ancestry.com Club

Do you find searching your family history online difficult? Then why not come and get some assistance with Rodney. He has a vast knowledge of online family researching. The Ancestry.com club will be on Thursday 14 August from 2.00pm - 4.00pm with the cost of \$5.00 per person.

TAX TIME

Lodge online with FREE Etax or MyTax

The CRC has downloaded the latest version of Etax on our computers at the centre, that are located in a private area. If you wish to lodge your tax return online via Etax or My Tax, please call us and we can set aside a time for you to ensure your privacy. This is a free service to the community. *Please note that staff are not able to do the lodgement for you.*

Tax Help Volunteer

Beverley has a Tax Help Volunteer who has been trained by the ATO to assist eligible residents to lodge their tax return for FREE. If you would like book an appointment with Terry for **Tuesday 26 August**, then please contact the centre on 9646 1600.



GJ & VJ SEEBER
trading as

BEVERLEY PLUMBING & GAS SERVICES

Established in Beverley since 1997
Your Local Licensed Plumber and Gas Fitter
Servicing Beverley & Surrounding Districts

PLUMBING

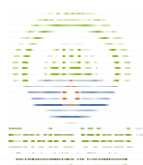
- ★ ACCREDITED WATERWISE & ENVIROWEST PLUMBER
- ★ SEPTIC INSTALLATIONS
- ★ SEWERAGE CONVERSIONS
- ★ MAINTENANCE & INSTALLATION of all PLUMBING REQUIREMENTS
- ★ INCLUDING BACKFLOW INSTALLATION and TESTING
- ★ NO JOB TOO SMALL OR TOO BIG
- ★ HOLDS CLASS 'A' PLUMBERS LICENCE

GAS FITTING

- ★ LICENSED (UNRESTRICTED) GAS FITTER for all ASPECTS of gas
- ★ MAINTENANCE and INSTALLATION

Mob: 0418 929 141
Fax: 9647 2109
Tel: 9647 2115 (after hours)

Water Auth Lic No. PL216
Gas Lic No. 386
Back Flow Lic. 103

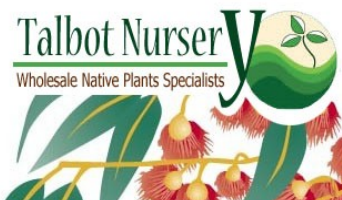


ChemDry[®]
Drier. Cleaner. Healthier.[™]
Beta Finish



Superior carpet
& upholstery
cleaning

Freecall 1800 017087
bettafinish@wn.com.au
Fax 08 96225473



Your Beverley Nursery

Native seedlings for revegetation,
bush foods and plantations.

- ✓ Our website is now fully operational - order on line!
- ✓ Tree guards and fertiliser pills
- ✓ Tree planting service available

E-mail: sales@talbotnursery.com.au
or phone/fax Lisa on 9646 1716.



E Squire Contracting Services

Water Supply
Windmills & Accessories
Solar Pumps:
Sales, Service, Installation
Fencing & Yards
Trenching & Poly Pipe Laying

E Squire Contracting Services
Beverley and surrounding districts

Phone: 9646 0800

Errol Squire 0438 682 687

"Sometimes you fall down,
Because there is something
Down there that you are
Supposed to find."
Author unknown



AT THE BEVERLEY SHOW

WOULD YOU RATHER QUEUE?

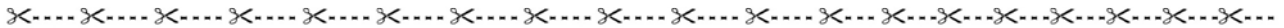


OR GO STRAIGHT THROUGH?



**BEVERLEY SHOW MEMBERS RECEIVE:
MEMBERS ACCESS ENTRY ON SHOW DAY (FOR MUM, DAD AND ALL THE KIDS).
FREE AFTERNOON TEA ON SHOW DAY.
ACCESS TO A RANGE OF FREE ENTERTAINMENT ON SHOW DAY.**

Normal Show Day entry prices are \$13 adult and \$5 unaccompanied children (under 16 years) and pensioners. If you wish to take advantage of our membership rates, as mentioned above. Simply fill out the form below and mail it (with \$25 cheque/money order made out to "Beverley Agricultural Society Inc." enclosed) to PO Box 108, Beverley WA 6304.



Beverley Agricultural Society (Inc) Membership Form

Family Ticket \$25 (2 adults and children under 16 years)

1. Please fill out your contact details so that we may keep our database up to date.

Name _____

Address _____

Contact Phone _____

Preferred Email _____

2. Please indicate your payment method.

EFT BSB – 016 540 Account - 2599 03452

❖ Please include your Membership name in the notation/message/reference field.

❖ Please continue to complete this form and post back to the above address.

Cheque Made payable to 'Beverley Agricultural Society Inc.'

❖ Please write your Membership name on the back of the cheque.

❖ Please include your cheque with this form and post back to the above address.

3. Tickets required?

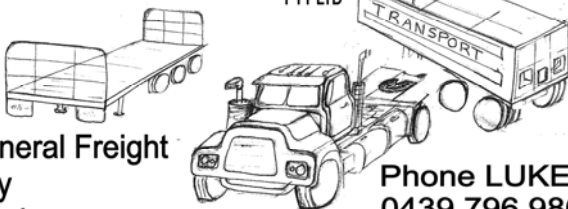
Adults (max 2) _____ **Children** _____

4. We will be mailing the tickets to your contact address in June. Would you like any of the following included with your tickets (please circle)?

Show Schedule 2014 YES NO

M & L GROSSMITH

PTY LTD



* General Freight

* Hay

* Wool

* Sand Gravel

* Bulk Grains & Fertiliser

Phone LUKE
0439 796 986
9646 1983
PO Box 342
Beverley WA

PURSLOWE TINETTI FUNERALS .com

Cremations & Burials

Country or City

Pre-paid Funerals

Arranged in your home or

264 Fitzgerald St Northam



**Call the Tinetti Family
9622 1411**



AUSTRALIAN
FUNERAL
DIRECTORS
ASSOCIATION

Beverley Garden and Tree Society

The June meeting found us at the CWA rooms welcoming two new members (Linda and Annie) and after a short meeting we enjoyed a social get together and a casserole lunch. We had so many dishes we had to fire up the wood stove which worked a treat and warmed up the kitchen. The bring and buy was set up in the sunny confines of the verandah and most of us were either warming our backs at the stove or standing in the sun!

Work has commenced on our Show entry and members are reminded that we are set up in Colleen's shed and having workshops on Wednesdays until we get finished.

Our bus trip to Toodyay is set for the 28th August and members are asked to book a seat.

All of our gardens are just ticking along due to the cold weather but there is still a lot to do.

Remember when you are pruning to clean your secateurs between plants to confine any bugs or diseases to the one plant. Any dodgy cuttings need to be put in a plastic bag and cooked in the sun. The compost heap may not be hot enough to kill everything.

Root vegetables i.e. carrots, parsnips, kohlrabi, turnips beetroot can still be put in, as can artichokes, asparagus, broad beans, cabbages, lettuce, and potatoes. Kale is a very rewarding crop to grow as not much can go wrong with it. I like the dark green one. It is very versatile as it can be used as a salad vegetable or steamed as green vegies.

Bulbs are starting to show themselves and will benefit from a Seasol drink and a feed. All to make bigger and better bulbs for next year.

Only six weeks or so until the Show so I hope you all are looking over your gardens and handicrafts for at least one entry.

Our next meeting is on the 5th August at the Dead Finish at 10.30am.

Happy Gardening



Country Women's Association Beverley Branch

July meeting was well attended but as several members had other engagements to attend we took the opportunity of sharing morning tea and a "catch-up" followed by a short meeting and finishing early with hot soup and snacks before we all headed off to our other commitments.

As I write these notes, we are looking forward to attending the State Conference of the Country Women's Association to be held in York. The 90th Anniversary of CWA of WA is to be a very well organized occasion with the York Branch and their newer group, the McCartney Belles having worked tirelessly towards the week's meeting, entertainment and Celebration Dinner. The town's businesses and community have given great support and there are to be outings in York for the Men's programme so that they may enjoy the week too.

Sarah Kenny, State President of CWA of WA, supported by all the State Office Staff have prepared a very interesting and hopefully productive agenda with motions on many social issues to be debated. A special attraction for the ladies will be the presentation by Liz Davenport, well known designer and manufacturer of ladies garments and outfits suitable for all occasions.

Four members of CWA Branch have nominated to attend sessions from Monday to Thursday and I know there will be a lot of information to share at our next Branch meeting.

Next meeting will be held on Thursday 14th August at 10.00am for morning tea followed by meeting and Bring and Share Lunch

We invite new prospective members to join us at the CWA rooms for our meeting or even just a cuppa or light lunch on the meeting day.

LORRAINE SIMS
Branch Secretary



Marcell's Cleaning

- * Domestic or Commercial * Move In / Move Out
- * End of Lease - Bond Recovery * Spring Cleaning
- * Weekly * Fortnightly * Offices * One-Off Cleans
- * Prompt and Professional Service
- * Gift Vouchers Available

Maree Thornton

Phone: 0429 646 155 / 08 9646 1558

Beverley & Surrounding Areas

MARCELLS CLEANING & GARDENING

Marcells Cleaning is now offering Gardening Services, Rubbish Removal and Handyman Work. Louvre replacements, Moving.

We can also paint your house number on your verge so Emergency Services can find you quickly if needed.

Phone Steven **0429 312 057** or **9646 1558**

Baiting for Foxes, Cats & Rabbits in Beverley or York?

Subsidies Now Available for 1080 Baits / Pindone

Up to \$300 per landholder available

Easy application process

Contact Environment Officer Jen Green at the Shire of Quairading for more information

9645 1607 or epo@quairading.wa.gov.au

For purchases made from 1st March 2014 – 30th October 2015

Restricted to landholders conducting baiting activities in the Shires of Beverley and York only



A COUNTRY RETREAT FOR YOUR BEST FRIEND

Brookton Hounds Pet Boarding:

- 🐾 Wide open spaces
- 🐾 Huge enclosures
- 🐾 Family run business
- 🐾 Fresh country air

Contact Murray and Liz on:

t (08) 9642 1875 m 0409 103 166

www.brooktonhounds.com.au



LEGO CLUB

MONDAY'S

2.45pm - 3.45pm

Playgroup Area at the CRC.

\$2.00 per child,
per session includes afternoon tea.

Ph: 9646 1600



CARPET & LOUNGE SUITE CLEANING

It's Spring Cleaning Time!

- * Carpets Cleaned
- * Lounge Suites Cleaned Like New
- * Car Upholstery & Carpets Cleaned
- * House Total Clean When Moving
- * Fire & Water Damage Clean Up

- * Stripping & Sealing Floors
- * Vinyl
- * Wood
- * Slate

Phone Colin Today on

0417 971 786

Email cdgrant1@bigpond.com



EAST AVON PEST CONTROL

Licence No. 1211

Specialising in all termite control.
Please contact Rodney Wells

0477 400 533

To view or download a the Beverley
Blarney go to beverley.wa.gov.au



BEVERLEY ELECTRICAL SERVICES

**Servicing Beverley, Quairading
and Brookton**

**For all your Electrical & Solar needs
Please call**

KARL SMITH

0429 887 535

PO Box 2 Beverley WA 6304

Email sales@beverleyelectrical.com.au

EC 006578

ABN 52 164 525 3586

BRIDGE - Card Game

If you would like to come along and enjoy a game of bridge. We welcome all new members to join us. **WHEN:** Mondays **TIME:** 1.00pm **WHERE:** CWA

NEED PRACTICAL TRADE ASSISTANCE?

D & M Services

(Design and Manufacturing Services)

Solving a range of practical needs and problems..

Specialising in:

- ✓ Kitchen renovations
- ✓ Shop fitting and modifications
- ✓ Furniture restoration
- ✓ General carpentry
- ✓ Alterations & installations
- ✓ Metal based fabrication
- ✓ Motorhome and Caravan fitouts
- ✓ Pergolas, Decks & Gazebos
- ✓ Designing and planning

Guy Slingerland

0403602335



BEVERLEY HISTORICAL SOCIETY

July Meeting: There were 10 members in attendance with 3 apologies.

Visitors to Museum: Quairading Seniors on Monday 14 July enjoyed a **Xmas in July** lunch at Hotel Beverley then came on to appreciate the Dead Finish collection. Another seniors group, this time from Kellerberrin, is expected on Thursday 24 July.

WWI Project – Remembering Them:

The first draft of text and photos for Beverley's three panels have been submitted to the WA Museum. All claims are being checked by members of the Royal Western Australian Historical Society to ensure historical accuracy.

Beverley Show: The Society has decided to combine our stories of "**Journeys**" with the Show theme of "**Water Conservation**". Water diving, water carting, stone-lined wells & use of limited water reserves on farms have been flagged for investigation.

Research: We have had a request from the **Morris Car Club** for photos of Avon Trading in 1960s and 1970s. Avon Trading were agents for **British Motor Corporation** vehicles in those days. Does anyone have a photo with the BMC sign on Avon Trading?

Field Trip: A field trip to **Bally Bally, County Peak & Morbinning** is planned for September 11 (tentative date). Interested members of the community are welcome to join us. More details will be provided after our next meeting.

Donation: Coloured photo of **Beverley's Open Air Picture Theatre, taken in 1960s, when "The Bridge On The River Kwai" was screening.** The Beverley Scout Troop had erected a large bridge-structure made from bamboo in front of the theatre that made a spectacular entry for patrons. Are there any scouts out there who can remember this?

Next Meeting:

Venue: Dead Finish Museum.

Date & Time: Monday 11th August 2014 – 2pm

Welcome: Anyone interested in local history
For more information contact the Secretary on





COLOURING IN COMPETITION

In keeping with the Beverley Agricultural Show theme of

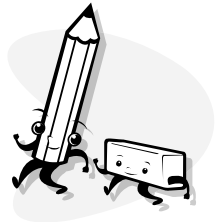
WATER CONSERVATION

the Shire of Beverley is running a colour in competition. Complete the “Please Help Save Water” picture and return to the Shire office by 15th August.



Don't forget to include your details at the bottom of the picture as a prize will be awarded in each age group. Your pictures will be displayed at the Shire office and then again in the Shire tent at the Show. Visit our tent to find out if you are a winner.

Contact CDO, Kathryn McLean 96461200 if you require further information



JUNIOR HOCKEY

REGISTRATION & FIRST SESSION

(This will be the only registration session with payment up front)

Monday 11th August 2014 - 3.00pm at the town oval - \$10 per child

Year 1 to Year 7 aged children

(please be aware that due to participation numbers multi aging is required for most activities)

Each child to wear a mouthguard.

Hockey stick and shin pads held up with long football style socks are recommended.
The Club has some equipment available to use.

A parent or carer must accompany their child to complete registration form and to help with protective equipment.

For more information 0427 464 050

(These sessions will be run by the Beverley Hockey Club)



FIRST NAME: _____

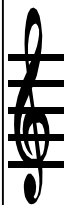
LAST NAME: _____

SCHOOL GRADE: K - PP / Yr 1—Yr 2 / Yr 3—Yr 4 / Yr 5—Yr 6

(please circle)

PHONE NUMBER: _____

**RETURN TO
SHIRE OFFICE
BY 15 AUGUST**



**Brookton
Choral
Society**
**50 Year
Reunion
Celebrations!**

We would like to invite all past members of the Brookton Choral Society to join us in celebrating 50 years (and a couple more?) of music, singing, acting, creating and performing in an astounding array of Community and District events that span 50 YEARS!

**Luncheon Saturday
8 November 2014
Brookton Memorial Hall,
Brookton**

Enjoy recalling the past musical productions, music halls, singing and performing at Community Events. There will photo's, video's and films from past events.

To RSVP or advise the contact details of other past members you may know please contact (ASAP):

Kate Walker 9642 4018
walker9043@gmail.com
Carol Bond 9642 1207
bktbonds@bigpond.net.au



BADMINTON

Wednesday mornings
at the Town Hall
Open to all ages,
men and women

**BEVERLEY
PATCHWORKERS
AND QUILTERS**

Parkerville hosted a friendship day last month which was well attended by quilters from a number of groups from Perth and surrounds as well as a large group from here. Some beautiful quilts were shown throughout the day giving us all renewed inspiration to make or complete some projects. A lovely morning and afternoon tea was provided by the hard working group with funds raised going to the Women's Refuge.

A warm welcome back to Christine who has been away for the past two months whilst recuperating from surgery. This hasn't stopped her from producing some beautiful blocks for her next quilt.

Geraldine has been busy co-ordinating the resurrection of some very old hexagon pieces for a quilt that were given to her. This has been a team effort and the project is nearing completion.

Much thought was given to whether we would be able to provide a display for the show but with a number of the group away at that time it was decided that we would have to forgo it for this year.

New members are always welcome to come and join us and we meet Tuesdays at Avondale. You don't have to be an experienced patchworker or quilter as we are always willing to help or give advice to get you started.

For more information call Janice 0438 019 510 or Catharina 0427 964 330

Beverley Country Kitchen

**111-113 Vincent Street
Beverley WA**

OPEN 7 DAYS A WEEK

Monday to Thursday 6.00am to 6.00pm

Friday 6.00am to 7.00pm

Saturday and Sunday 7.00am to 7.00pm

Wednesday PIZZA NIGHTS - open till 7.30pm



Photo compliments of Mr BE LONG

"Fly in for a home made Pies, Pasties or Sausage Rolls, perhaps Fish & Chips or Hamburger".

You'd be 'plane' crazy not to try our home cooked food.

We don't have drive through but you can park your plane and dine in.

Phone orders through to 9646 1524



Government of **Western Australia**
WA Country Health Service

Media Release



Rug up and get moving with Heart Foundation Walking

It can be hard to find motivation to exercise during winter with the shorter days and cooler temperatures. Joining a Heart Foundation Walking group could provide the motivation you need to keep active.

"It is easy for people to use the winter weather as an excuse not to be active," said the Heart Foundation's National CEO Mary Barry.

"Joining a Heart Foundation Walking group in your area can help you keep your commitment to exercise regularly."

Heart Foundation Walking groups provide a safe and easy way to stay active in the colder months. They are free and you will have a group to keep you motivated to keep going throughout winter. There are also Heart Foundation incentives available as you complete more walks!

Heart Foundation Walking groups are coordinated locally by Daniella Joyce, Health Promotion Officer with the WA Country Health Service. If there are no groups in your area, you are welcome to contact Daniella who can assist you to start one!

For more information about Heart Foundation Walking contact 1300 36 27 87 or visit www.heartfoundation.org.au/walking.

CRANA Aboriginal Corp. Inc.

NAIDOC WEEK was held in July 2014: Tribute was paid to former indigenous elders, known as the first people who all fought for their land rights.

"Terra Nullis" many stories have been told, much has been spoke, yet very little has been done for the battlers, who, still face serious housing shortage and serious health problems. Example welfare, legal aid, community youth programmes have had budget cuts. Grants and funding for indigenous community organisations, are so complex and drowning in red tape, that we get fed up with the injustice, mainly targeting the indigenous.

CRANA raised \$1,500/- to send 6 children to Melbourne to compete in the WA Jujitsu Australian competition in Melbourne. We are hoping to get more financial support for these children to compete. The stay in Melbourne is 4 to 5 days. Three parents will be travelling with their children , at their own cost.

Mal G Roberts
Adviser Director

Mitch Henry
President

NB: Our legal status: CRANA is registered with the ATO as a charitable entity.

Countryside Memorials



Cast Stone
Granite
Marble
Plaques

Added Inscriptions
All Repairs and Restorations

25 YEARS PROFESSIONAL EXPERIENCE
FREE DESIGN AND QUOTE

Servicing All W.A. Country Areas

9622 5544

OXTER SERVICES

www.oxter.com.au

oxter@westnet.com.au

KARRADALE LIVESTOCK TRANSPORT YORK LIVESTOCK TRANSPORT

ABN 64 054 007 721

We service Beverley, Brookton, York
& surrounding districts

Available to transport Sheep & Cattle

No job too big or small

Support the local communities

Member of ALRTA

If you need stock moved, Peter would love to
hear from you - 0428 481 281



Beverley Men's Shed Incorporated Annual Report

I present to you my report on the activities of the Beverley Men's Shed Incorporated for the year ended 30 June 2014.

Our year has, once again ended on a very positive note. Our membership has gradually increased to 80, and our finances are in a sound position as demonstrated in the accompanying financial statement. I thank our treasurer Grant on your behalf for the professional manner in which he keeps the books.

1947 Austin Truck

The major achievement after four years of dedicated skill and hard work was the completion of this vintage truck. Apart from some additional help from a number of members, major credit for the success of this wonderful project is due to the efforts of Ken Sherwood, Neil Murray, Daryl Storer, Bernie Howell and the late Ken Colpitts who contributed towards the trucks restoration, prior to his passing in 2012. The Truck is now considered to be the mobile part of the Men's Shed, being now permanently housed in a purpose built Shed. We are very grateful to Jamie and Trudi Ainger, through their business J and T Sheet Metal in Maddington, for their very generous donation of the material used in its construction. Trudi and Jamie are Daryl and Lee Storer's daughter and son in law. The weld mesh and steel framing used to enclose the building was purchased and erected by members.

The Boat

While not altogether a financial success, the refurbishing of the boat gave a number of members an interest and on its completion was donated to the Beverley Branch of the St. John Ambulance Association who raffled it and raised \$1500 towards the lighting of the Beverley Aerodrome.

Bus trips

Several bus trips were made during the year. It was a great relief to all, that those members who risked their lives on these dangerous excursions, due to the drivers lack of regard for passenger comfort, survived, particularly over hazardous railway crossings. Special thanks to Roki, Sherwood and Co.

Depending on length of the trip, our financial position has allowed the committee to cap the cost to each member at \$10. This puts the cost of a days outing within financial reach of all members. Even though the hiring of the community bus can be significantly more. Gentlemen, the "Beverley Men's Shed Incorporated" has continued to be a second home each week to an increasing number of members who enjoy each others company over a cup of coffee every Tuesday morning. To that end the last nearly six years has been a wonderful experience for us all, providing us with the opportunity to come in contact with people who we may not otherwise have met.

Our journey since we first started in 2009 has, for a bunch of old buggers, been a credit to all who have contributed to where we are today. During that time we have,

- Negotiated a long term lease with the Beverley Shire Council for the Heritage listed Old Fire Station,

BEVERLEY TRANSPORT SERVICE

Your local carrier for over 30 years.

**GRAIN, FERTILISER, LIME, HAY, WOOL AND
GENERAL TRANSPORT**

**Agents for
Optima Agriculture
Supply and cart of Lime products**

**Garry & Sarah Miller
Ph: 9646 4066 or 0428 464 066
miller@reachnet.com.au**

**TV Antennas
UHF CB Repairs
Digital TV Upgrades
Reception Problem Solving**

**Qualified communications technician.
Reasonable labour charges.
Onsite service.
Repairs and installation to some car audio, car
security, mobile phone handsfree.
Reversing camera systems for automotive and
machinery.
Based locally in Beverley**

**Regional Antennas Plus
ALAN PRIMROSE
0408 002 965**

- Created a close working relationship with the Heritage Council of W.A. with regard to the condition of the Old Fire Station.
- Constructed the new workshop with a \$35,000 grant from Lotterywest and were privileged to have the Governor of Western Australia Dr. Ken Michael AC open it in 2010.

Although major items of the machinery have been donated, successful grant applications and member's funds have.

- Completed the setting up the workshop.
- Fully equipped the computer room with 3 computers.
- Lavished the office of the Social Committee with carpeted computerised comfort for its Treasurer [Handcock]
- Equipped the social building [Fire Station] with 2 pool tables, a television for members enjoyment and a new dishwasher.

Gentlemen, it is you the members who have achieved everything mentioned above and while not mentioning individual members who may have contributed more than others, I particularly, on your behalf would like to thank Bruce Peck for providing morning tea for us on Tuesday's when he is available to do so.

I also think the Social Committee is deserved of some recognition, mainly through the financial skills of little Colin, [Handcock] the Dutchman Leeuwenburg, for his skill in burning barbecues, [literally] and the cooking skills of Big Fred.

We thank them and the other members of that elite group who make our sausage sizzles sizzle.

Summary

There have been instances since we started that I would have preferred not to have happen, but those instances pail into insignificance when I see the number of friendly faces who turn up at the Shed each Tuesday morning. A number of who, together with their wives and partners have retired and now call Beverley their home. I am totally convinced that with good management, appreciating the opinions of others and a welcoming hand to our growing number of residents, the Beverley Men's Shed Incorporated will not only continue, but will occupy an important place in the future of Beverley. We appreciate the association we have enjoyed over the years with the Shire Council and sincerely thank both the Councillors and Staff of their assistance and continued support.

To our Vice President Ted Sampson, Treasurer Grant Hobbs and Committee members John Pratt, John Thomas Terry Robinson, Bob Reid and Bill Leeuwenburg, I thank you for your support over the last year. There remains one person who I consider deserves special recognition. Bernie Howell is one of the original four members who first requested the Shire for support in establishing a Men's Shed in the district. Bernie has been a great support to the Shed and has held the office Vice President and Secretary over the years.

Gentlemen I thankyou for having me as your President and I look forward to our new President John Islip and his Committee enjoying the same pleasure that I have derived over the last 6 years.

I wish you and your families continued good health, and may your thick skin and sense of humour prevail forever.

Fred Bremner
08/07/2014

RA-AN ENTERPRISES

**All Dozer and Excavator Work
Including:
Dam Sinking
Dam Cleanout and Enlarging**

**Excavator with Wood Shears,
Tilt Bucket and
Hydraulic Grab.**

Locally Based at West Kokeby

**Phone Ray 0428 936 621 or
08 9646 4136**



dtworx
local carpentry service

Lindsey Doyle

Ph: 0422 300 338

PO Box 450 BEVERLEY fax: 9647 2010 email: dtworx@westnet.com.au



T.M. Hair Design



Family Hairdressing at reasonable prices.

All our professional hairdressers are here to help you with all your hairdressing needs.

Please note we are open on Saturdays for Hairdressing Bookings are essential.

At Secrets: We have been busy with the revamp of the store with Fashion taking a front row & Gifts having their own exclusive nook.

Please feel comfortable going on through to the "Cave" to see what treasures lie within.

Our clothing ranges continue to keep the ladies around town looking fabulous, with warm jackets, scarves, jewels, handbags & ballet flats to complete their outfits. Our new range of great priced leather bags are a big hit.

Keep watching as there are some new mark downs in store, mixed through our new stock for our "treasure hunt" bargains. Please enjoy the reduced prices.

Note..... we are open on Saturdays also.

While you support us, we remain committed to providing well priced items for you, & continue to support "Our Town's" prosperity.

Call in to 100 Vincent St,
or phone 9646 1122.

YORK CHIROPRACTIC

MacLachlan Centre,
Trews Road, York

Clinic available every week
by appointment only.

Tel: 9641 1500

Dr Alexandra [Sacha] Browne

B.Sc [Chiro] B.Chiropractic
Doctor of Chiropractic



Max Hunter's Firewood Supplies **Ph: 96461 236**



The Jarrah Bush Wood is sold by the tonne. Delivered in truck or trailer loads.



David Johnson

PH; 0428 995 950 Or Email johnno_d@hotmail.com

For all your bulk haulage needs : Lime, Fertiliser , Grain
Side tippers, Flattops, Container cartage!
You name it, Ill cart it!

Supporting locals from Beverley and surrounding areas!

AVON DRILLING SERVICE

Mick Lewis
Ph: 9572 7828
Mob: 0427 814 055

Brenton Legg
Mob: 0404 708 979

**WATER BORES
BORE DEVELOPMENT
MINI EXCAVATOR HIRE
POST HOLE DRILLING**

**Beverley Community
Information and Referral Services**

NOTICE: Please note that due to constant changes to various laws, regulations, requirements, rules, fines etc., these changes seem to be never ending therefore, I no longer can offer legal information. I will not be requesting for Legal Aid brochures. For current legal information, please contact the Legal Aid Office in Perth.

LEGAL ADVICE: Contact Legal Aid, or your local Barrister.

REFERRALS: To various government and non government organisations, government ministers and MP's and other professionals will only be made with both oral and written consent from the party concerned and in my presence. The same will apply to Lawyers, Doctors or Members of Parliament.

COMMUNITY ADVICE: My main role is, in the sector, which is to provide a service and seek justice for one and all, more so, for those who are not so fortunate and for people with disabilities.

It should be noted that I provide assistance only on COMMUNITY MATTER and DO NOT offer legal advice.

HOME PROPERTY DAMAGE: Vehicle Tyre Damage (boarded spikes on roads) The matter has been reported to the relevant authorities for investigation.

Mal G Roberts.

passive energy systems

local specialists in

SOLAR POWER

GRID-CONNECT

OR

OFF-GRID

WIND POWER

all electrical
contracting services

the sky's the limit

call John or Marlene for a quote:

646 77 263 - info@pvenergy.com.au

100% customised to suit your
personal needs & budget!



COMMERCIAL SOLAR IN BEVERLEY: Are you constantly being canvassed by Solar companies who are 'in your area this week', sending you faxes, ringing your business, offering you cheap deals? This is just lazy business practice and offers no advantage to the local economy whatsoever! Passive Energy Systems is a local Beverley business, employing locals, living and spending in your town! We are qualified, experienced, have Clean Energy Council Accredited Installers, can offer outstanding after-sales service and our prices are very reasonable. Yes, electricity prices are on the rise, yes solar is a good option for your business, but don't let Perth based companies trash our local businesses! Support local, and we will support you! Solar Finance can be arranged. Phone: 646 77 263 – John & Marlene.

TAX RETURNS

Registered Tax Agent

Public Accountant

Business Consulting

M. E. (MeI) VIVIAN

OFFICE HOURS:

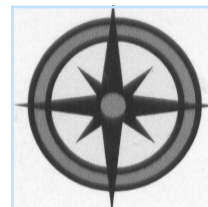
THURSDAY 9.00am - 5.00pm

FRIDAY 9.00am - 5.00pm

101 VINCENT ST (Bankhouse)
BEVERLEY

Please phone for an appointment
9646 0282

All types



All areas

ALLROUND CONCRETE

SHED FLOORS, DRIVEWAYS, FOOTPATHS, HOUSE SLABS,
SILO PADS, FERTILIZER/GRAIN/SUPA SHEDS

ROBBIE HIGGINSON

MOBILE: 0427 384 977

HOME: 9641 2459 FAX: 9641 2339

ABN: 26 997 512 874

PO BOX 345 YORK WA 6302



York Estate Agents – (Beverley Division)

Local Residential & Rural Experts, honest and caring for your requirements. Whatever you are looking for, be it your first home, or retirement home, a hobby farm, a dream block of land or investment.

We can help with a can do Professional Attitude.

Contact the Team at York Estate Agents for all your Real Estate requirements. Office: 72 Avon Terrace York WA 6302

Residential: **Helen Stubing** 0407 964 611 Your Local Sales Rep

Rural: **Michael Bawden** 0403 268 158 FREE Appraisals

Rentals: **Jenette Callaghan** 0418 929 011

Office: T: 9641 1335 F: 9641 1334

Helen: Email: stubing@oceanbroadband.net

Office: yorkfn@westnet.com.au

Web: www.yorkfn.com.au

**VOICE OF THE AVON
101.3 FM, LOCAL PROGRAMMING**

SUNDAY

- 8:00 - 11:00 Sunday Morning
Coming Down – John
- 12:00 – 1:00 Soul and Inspiration
Susan
- 4.30 - 9:00 Metamorphosis – Bob

MONDAY

- 6:00 – 10:00 Monday Breakfast - Bob
- 10:00 - 1:00 Mustang Sally – Susan
- 1:00 – 4:00 Folk/Swingin' Jazz Club
- Peter
- 4:00 - 7:00 Celtic Note – Joe
- 7:00 – 10:00 Classical Sounds - Chris

TUESDAY

- 6:00 – 9:00 Tuesday Breakfast - Bob
- 9:00 - 12:00 Around The World – Leila
- 12:00 - 3:00 Countrywide – Wally
- 6:00 – 10:00 Old Guys Rock – Terry

WEDNESDAY

- 10:00 – 2:00 A Little Bit of Everything –
Joe
- 4:00 – 7:00 Legends and Locals - Mark
- 7:00 – 9:00 Back to the Future – Frank

THURSDAY

- 9:00 – 12:00 Mustang Sally – Susan
- 12:00 – 3:00 Kaleidoscope – Chris
- 6:00 – 9:00 True Rock n Roll - Milo

FRIDAY

- 6:00 – 10:00 Friday Breakfast - Bob
- 10:00 - 1:00 Discography – Tess
- 1:00 – 4:00 Kornucopia – Karen
- 6:00 – 9:00 Friday Night Country -
Milo

SATURDAY

- 6:00 – 10:00 Saturday Morning Variety
Show – Terry
- 10:00 – 2:00 Saturday Mix – Graham
- 6:00 – 9:00 The Time Zone – Karen

Station Phone Number 9641 2422

e-mail: radio6ycr@hotmail.com

Facebook.com : Voice of the Avon
101.3 FM

New website:

www.voiceoftheavon.org.au
*live streaming of Voice of the Avon
101.3 FM*

*79.5 hours of local presenters
each week. Effective 24/5/2014*



UP-COMING EVENTS

**Monday-Thursday
Happy Hour 5.30pm - 6.30pm**

**Every Friday
"Toss the Boss" 5.30-6.30pm**

**Friday 22nd August
Live Band from 8pm**

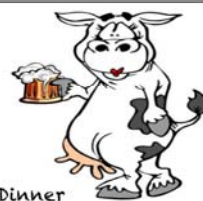
**Saturday 23rd August
DJ/Karaoke from 9.30pm**

TUESDAY'S



Every Tuesday,
Youngster's over 60
Get the special treatment of
enjoying a special meal here at
the Freemasons Tavern.
Fish & Chips
Yummy Sweet
Cuppa Tea or Coffee
All for \$15 pp

**STEAK
or
FISH
SUNDAYS
\$12
Lunch or Dinner**



23rd AUGUST FROM 9.30PM

**PIZZA
TAKE-AWAY**

\$20

Freemasons Supreme

Meat Lovers Pizza

Ham, Cheese & Pineapple Pizza

Vegetarian Pizza

Chicken, Cheese & Pineapple Pizza

(13 inch base)

Phone 9646 1094



Lyme Disease

An enormous thank you to the Beverley Football Club for allowing the Lyme Awareness Day to be held in conjunction with their Beverley vs York match on Saturday 19th July and for their generous donation of the proceeds from the casserole tea that night.

The funds raised on the day will be divided between Karl McManus Foundation, who are committed to research into Lyme Disease testing and treatment and the Dr. in Perth who is leading the charge for recognition of Lyme Disease in Australia. He is almost ready to present a paper to the medical fraternity clearly proving cases of Lyme which have been caught in Australia.

This paper will create undeniable proof that the disease is here and those suffering deserve the right to treatment and acceptance of their plight. It is hoped that clearing the way for correct testing methods, appropriate treatment availability and awareness by doctors, will improve the health of the community at large as there are so many undiagnosed or misdiagnosed cases due to lack of understanding incorrect testing for the disease.

The Lyme family have great faith in the work that the Dr has done so far and are grateful for his efforts on our behalves so it is only fitting that we support his work financially, as he has taken on this massive job at his own expense. We live in the hope that it will produce the desired results. Please accept our sincere thanks to all who donated on the day. It is very overwhelming to see the way our community has supported our efforts towards Lyme Awareness and Action and in so doing supporting our plight.

So thank you, thank you, thank you.



**WD & LM SLEEP
BOBCAT**

Specialising in

House tank and shed pads, laser level to engineered specifications, also bobcat site work, block cleanups and post hole digger.

M: 0429 461 314



LANDCARE COMMUNITY EQUIPMENT GRANTS

Do you belong to a group that works with the community to undertake Landcare work?

Are you operating in the Avon River Basin?

Are you building capacity in your group so that you are more sustainable into the future?

Do you need to buy equipment that will help your group undertake the work you do, support your administration or attract new volunteers and members?

Wheatbelt NRM has grants available for community groups to purchase equipment that will help their organisation grow and become more sustainable. Grants are available up to a maximum of \$1000

ELIGIBLE ITEMS INCLUDE:

Computer, Printer, Software, Scanner, Sensor camera, Tablet (iPad or the like), GPS device, Microscope, Promotional banner, Pottiputkis and kidney bean buckets

Consumable items such as seedlings as well as items such as fencing or herbicides are ineligible. This grant is for items that will benefit the operations of your group for the long term.

Enquiries to Jacquie Lucas, on 9670 3113 or email jlucas@wheatbeltnrm.org.au

Application forms are available from the Wheatbelt NRM website www.wheatbeltnrm.org.au

Applications close Friday 22nd August 2014 @ 5pm

Supported by funding from the Western Australian Government's State Natural Resource Management Program



www.wheatbeltnrm.org.au

Beverley District High School

Welcome to our holiday edition. By the time you read this your children will have returned to school for term 3. We hope you had a great holiday with your children and you enjoy the articles we have put together for you.

Year 4/5 Happenings

It has been a busy year in the Year 4/5 class. We have been studying spices, tasting them, finding out where they came from, and looking at how they were used compared to how they are used today. As a wind up to our theme we did a massive cook up. We divided into six groups with each one cooking an entrée, a main meal and a dessert. Mrs Vandenberg and Mrs Hare helped us, much to Mrs Thomas' relief, and we spent until just before lunch creating our masterpieces. We then sat down and ate an amazing amount of food. Mrs Thomas was shocked at how much we ate!!!! Our meals were:

- Entrée – Pumpkin Soup, naan bread, parmesan & herb pinwheels, focaccia, curry puffs and garlic bread.
- Main – Curried sausages, spaghetti bolognese, tacos, hi ti min, mini pizzas and butter chicken.
- Dessert – Apple cake, apple crumble, spiced honey sponge, mango crepes with star anise syrup, ginger ice-cream and cinnamon curls.

It was a scrumptious event that left us feeling rather heavy and full. We discovered we love herbs & spices.



Throughout the year, some of our student have attended PEAC sessions every second Tuesday. They recently attended a Leadership Forum. Here is a review of the day from Anneliese Mellick.



PEAC is a program that takes place every second Tuesday; it starts at 9.30am and finishes at 2.30pm. PEAC stands for Primary Extension and Challenge. At PEAC we do similar activities to school, but they're more challenging and difficult. As with school, we have a main subject for the term. Last term we learnt about the solar system and this term we're learning about leadership and great world leaders such as Nelson Mandela, Julius Caesar, Mahatma Gandhi and many others.

On the 18th and 19th June all PEAC students went to a leadership forum held at the Bridgeley Centre in Northam. We had a choice to go on the 18th or 19th. Mathew and Declan went on the 18th and Grace, Abbey and I went on the 19th. When we arrived the first thing we did was introduce ourselves to someone from a different school that we hadn't met before. Then we wrote about likes & dislikes in our community and what we would change about it. At about that time it was recess so we all had time to eat recess which didn't seem like that long to me. After that we all went into a different room to do some work on plastic waste and learning about how much rubbish we throw out every day. Then soon after it was lunch time which to me felt as short as recess. Lastly after lunch we were split into groups and the group that I, all the other PEAC students, and a few other people were learning about some indigenous stories about some interesting plants and nuts that were going in a garden the other students had designed. I had a great day I just hope we can do it again soon!

By Annie Mellick

Kings Park Walk Trail Recipe

INGREDIENTS

- 21 freshly picked chaotic Year 4/5's
- 2 grumpy old teachers
- 4 cups of kid filled cars with maniac drivers at the wheel
- 1 tablespoon of Mrs Thomas getting two groups lost
- ¼ teaspoon of Abbey knowing the right way to go
- 1 teaspoon of Barclay walking into the bars at the War Memorial
- 1 whole Josh thrashing the others in car games
- 1 handful of Annie prancing in front of every photo opportunity
- 1 teaspoon of Grace finding her ancestors on the Memorial Wall
- 1 cup of Abbey trying to make her mum drive faster
- 21 boxes of chips, nuggets, frankfurts, pies and sausage rolls
- 21 delicious Freddos and Mrs Thomas trying to eat one
- 1 cup of 21 kids stuffing themselves with ice-cream
- 100 sprays of water from the Pioneer Fountain
- 1 cup of beating hearts and sweaty kids
- A pinch of Lexi feeding the crows, despite the sign saying not to.
- 300 tonnes of children shouting at the whispering wall
- 21 grams of children sprinting across the glass bridge
- 7ml of cameras and iPods, and all kinds of electronics
- 4 dried out and fed up parents
- 3 teaspoons of Elf Yourself game
- 1 sweaty Pete saying 'hi' as he jogged by
- 300 grams of questions to answer
- 100 000 litres of Sam taking selfies
- 2 litres of a car sick Josh
- 1 bucket of playground mud
- 21kg of sore and tired feet
- 6ml of river views
- ¼ of a bruised Bronte
- 1kg of Kevin the duck moves
- 2 cups of awesome playgrounds
- 1/3 cup of Eli falling off the spider
- 2kg of Barclay running ahead
- ½ cup of Declan scaring Mrs Cleland

METHOD

1. Preheat the oven to 4 hours of driving.
2. Mix together in a bowl, the grumpy old teachers, freshly picked chaotic 4/5s and the dried out fed up parents.
3. Add a sweaty Pete saying 'hi' to Mrs Thomas getting two of the groups lost. Mix ¼ teaspoon of Abbey knowing the right way to go for flavour.
4. Cool to room temperature the car sick Josh, Barclay walking into the bars and mix together with Annie the photo bomber and Sam's selfies.
5. In a separate bowl, combine Grace trying to find her ancestors on the memorial wall, 300 grams of questions to answer, 21kg of sore and tired feet, 100 sprays of water from Pioneer Fountain, 6ml of river views, 1 cup of beating hearts and sweaty kids, 300 tonnes of children shouting at the whispering wall, 21 grams of sprinting children on a glass walkway, 7ml of all sorts of electronics and 2kg of Barclay running ahead. Bake for 20 minutes.
6. Create a topping with 21 boxes of food, 21 kids stuffing themselves with ice-cream, 21 Freddo Frogs, a pinch of Lexi feeding the crows because they were cute, 1 bucket of playground mud, ¼ cup of bruised Bronte, 1/3 cup of Eli falling off the spider, 2 cups of awesome playgrounds and 1kg of Kevin the duck dance moves.
7. Decorate with Josh winning all the car games, Mackenzie and Rebekah playing Elf Yourself, 1 cup of Abby trying to make her mum drive faster, 2ltrs of car sick Josh and ½ cup of Declan scaring Mrs Cleland.
8. Serve all together according to taste to have a great learning day and HEAPS of fun.



Year 3/4 Pasta Making-Recount by Ella Cooke

On 17th June the year 3/4 class made pasta in the Home Economics room. Lots of the people in my class brought their parents in. There were a lot of parents to help. My helper was Signora Bell. My group was Claudia and Silvio.

THE INGREDIENTS ARE:

- Acqua
 - Sale
 - Farina
 - Olio
 - Uova
1. We put all of the ingredients in the bowl but we did not put the uova shells.
 2. Then we mixed it all up.
 3. Next we kneaded the pasta.
 4. Then we got the pasta machine and flattened it.
 5. Then the pasta machine cut it for us.
 6. That is how you make pasta.

Signora Minchin would like to thank the following parents for helping the Year 3/4 make pasta: Signor Morrell, Signor Murray, Signor Shaw, Signor Roche, Signor White, Signora Bell, Signora Schilling and Signora Lewis. I appreciated it along with the students who really enjoyed having you there.



Until next edition, stay safe with your family.

Sera Minchin

BUSINESS SUNDOWNER



We would like to invite you to the Beverley CRC **Business Sundowner**. The aim of this free event is to give you, the business owner, the opportunity to network and market your local business, brainstorm initiatives to encourage and promote local shopping and also enjoy the company of fellow business owners, in a social and friendly atmosphere. Our invited guest speaker is Caroline Robinson from Solum Wheatbelt Business Solution and is the Executive Officer of the Wheatbelt Business Network (WBN). The WBN is a proactive organisation providing professional business services, networking, advocacy and support for local business within the Wheatbelt area.

THURSDAY 07 AUGUST 2014

5.30pm - 7.00pm

Beverley CRC, 132 Vincent Street, Beverley

Refreshments and finger food

Please RSVP for catering purposes only

Contact Amor 9646 1600 or beverley@crc.net.au



BEVERLEY BOWLING CLUB

Invites entries to

PRIMARIES

MENS TRIPLES

SPONSORED BY PRIMARIES OF WA



Friday September 5th
Play starting at 9.30a.m.

Entry Fee - \$60.00 per team

*(Includes green fees, lunch,
morning & afternoon tea)*

Non-Members welcome, Non-Whites Attire

ENTRIES CLOSE WEDNESDAY Sept 3rd

Club: Phone/Fax - 96461340

Men's V/Captain: Kim Moulton Phone - 0427 481 011

**COME AND HAVE A ROLL
ON OUR NEW GREENS**

July Khanacross (KX)

Perfect weather conditions at Beverley on the weekend allowed a strong field of 23 entries to thoroughly enjoy the 13 khanacross tests on offer at BORMSA. Jason and Barry from WA Superlites took advantage of a break in their events to try out the BORMSA tracks with winning times. Tim Ralli showed he hadn't lost any of his KX skills by coming home as first traditional 2WD in the lancer, after battling all day with Pete Dixon's excel, which had an unfortunate clutch issue to end the day on the tow rope. It was great to see Darryn & Ian not only race, but finish, after ten months of extensive repairs, both in the Top 10. Congrats also to the large contingent of first time KX competitors who set some great times and had an enjoyable day. Top 5 results:

• Jason Leonard	14:23.59
• Barry Vostan	15:15.00
• Tim Ralli	15:28.66
• Darryn Picen	15:35.31
• Tim Bayer	15:48.74



Perfect conditions at the BORMSA Khanacross

July Junior Motorkhana (JMK)

Kieran Nevin showed some driving flair and took the win and a \$20 BORMSA voucher at the Junior Motorkhana at BORMSA on Saturday. After re-checking the maths several times, it is confirmed that Alex Nevin (2nd) & Jacob Bruinsma (3rd) were split by only 0.65 seconds after 18 motorkhana tests were run!

Congratulations to all drivers on their efforts - particularly the Reversing Tee Slalom! Many thanks to the McNaughton & Nevin families for their assistance with the event.



Jacob's first JMK at BORMSA

May Autocross (AX)

Incredibly wet and muddy conditions faced competitors for the May Autocross. Congratulations to Garry Connell who took the win in his Artic Cat at BORMSA on his first visit to Beverley. A great effort by Garry Butler (Ford Escort) as first 2WD home (and winner of the \$75 BORMSA voucher), followed by Justin O'Malley in the WRX and Pete Dixon in the Excel. Tim Ralli proved he hasn't lost his driving skills, closing out the Top 5 on his first ever competitive outing on the Autocross track after 3 years surveying the action as Event Secretary.

Jump starts caught out a few, with 2012 BORMSA Khanacross champ Cam Moody (19th) missing out on family bragging rights to Wally (14th), fellow jumpers included Andrew (18th) & Sean (17th). Matt (16th) discovered that windscreen wipers are essential in muddy conditions at BORMSA, getting into strife on his first run.

After 5 tests final results were:

• Garry Connell	10:16.12
• Gary Butler	10:35.43
• Justin O'Malley	10:37.67
• Pete Dixon	10:51.88
• Tim Ralli	11:02.24



Anglican Parish Beverley/Brookton

Times for services for:

AUGUST 2014



DAY	DATE	CHURCH LOCATION	TIME AM	TIME PM	SERVICE
Sunday	03 August	St Mark's Brookton	8.30am		Holy Communion
Sunday	03 August	St Mary's Beverley	10.30am		Holy Communion
Sunday	03 August	St John in the Wilderness, the Dale	10.30am		Prayer, Praise & Proclamation
*Sunday	10 August	St Mark's Brookton	8.30am		Holy Communion
Sunday	10 August	St Mary's Beverley	8.30am		Prayer, Praise & Proclamation
Sunday	17 August	St Mark's Brookton	8.30am		Holy Communion
Sunday	17 August	St Mary's Beverley	10.30am		Holy Communion
Sunday	24 August	St Mark's Brookton	8.30am		Prayer, Praise & Proclamation
Sunday	24 August	St Mary's Beverley	8.30am		Prayer, Praise & Proclamation
Sunday	31 August	St Mark's Brookton	8.30am		Prayer, Praise & Proclamation
Sunday	31 August	St Paul's Edward Crossing		3.00pm	Holy Communion
Sunday	01 Sept	St Mark's Brookton	8.30am		Holy Communion
Sunday	01 Sept	St John in the Wilderness, the Dale	10.30am		Holy Communion

**The Rev'd Graeme Varvell from the Warnbro Parish of St. Brendan's by the sea will be visiting Brookton on this weekend. All Beverley parishioners are welcome to attend this service.*

Parish correspondence to: P.O. Box 292, Beverley
The telephone number for the Parish is: **9646 1112**

All mail for St. Mary's Society please address to: **P.O. Box 292, Beverley.**



CATHOLIC CHURCH

Service in Beverley
8:00 am every Sunday at
Beverley Sacred Heart Church
Lukin Street, Beverley



THE RELIGIOUS SOCIETY OF FRIENDS (QUAKERS)

Beverley Friends Meeting
Old Catholic School Rooms
Dempster Street

Sunday 10:30am -
Meeting for Worship

For more information & enquiries
phone 9646 0575.

BEVERLEY CHRISTIAN FELLOWSHIP

Bible study
Monday evening at 7.30pm
Followed by supper and a time
Of caring and sharing fellowship
Place alternating homes

Visiting Pastor from independent
ministries
SWOT (South West Outreach Team)
1st Wednesday of the month
10.00am
Place 16 Barnsley Street, Beverley

Enquiries
9646 0282 or 9646 0546

BEVERLEY HOME CHURCH

Meet 1st and 3rd
Saturday of each month
Fellowship meal at 6.00pm
Followed by a games night
Place 16 Barnsley Street,
Beverley

Enquiries
9646 0546



The Church of
United Spiritualism

Please contact Rev Irene
on 9646 0470 for details.

DRUG & ALCOHOL COUNSELLING

The Wheatbelt
Community Drug
Service Team will
be visiting
Beverley Hospital
fortnightly.

For appointments please phone
Jackie Darby on
96211 055.

Meals on Wheels Roster for AUGUST 2014

Aug 01 G Roache / J. Johnson

Aug 04 B. & J. Howell

Aug 05 S Eramiha / G Redding

Aug 06 N & E Murray

Aug 07 D. Kilpatrick(ND)/ C Tee

Aug 08. S Negus/A. Bartucciotto

Aug 11 A & K Boyle

Aug 12 P. Smith/ K Badger

Aug 13 M. Alford/ G. Courtney

Aug 14 D & E White

Aug 15 J. Islip/ J. Van Tiel

Aug 18 B Foster/ N Darr

Aug 19 D. Ormerod/ B Sims

Aug 20 D Strange/ E. Boyle

Aug 21 A Elston/ W. Gilbert

Aug 22 B Wauchope/J Johnson

Aug 25 M Alford / G Courtney

Aug 26 R & J McCallum

Aug 27 B & J Howell

Aug 28 N & E Murray

Aug 29 S Negus/A. Bartucciotto

Sept 01 C Tee/B Foster

Do you want to volunteer?

We are always happy for new

Volunteers to join our crew.

Contact Dorothy: 9646 3213

BEVERLEY DIABETES SUPPORT GROUP

Meets at the O.T. Room, Beverley Hospital

WHEN: 2.00pm til 4.00pm

The support group will meet every second Tuesday of the month.

Contact Sylvia Seddon on 9646 1072

Type one and two diabetics of all ages are encouraged to attend as well as other members of the public interested or suffering from diabetes. Please park on the road or behind the St John Ambulance Centre.

BEVERLEY CHILD HEALTH CLINIC

Clinic is open Fridays for appointments, home visits and/or immunisations 9am to 4pm.

For appointments or enquiries please phone the hospital on 9646 3200 or 0427 901 321.



LISA WAY — Child Health Nurse



The Words of the Preacher



“Then the eleven disciples went away into Galilee

and when they saw Him, (Jesus) they worshipped Him;

but some doubted. Then Jesus came and spoke to them, saying,

‘All authority has been given to Me in Heaven and on earth.

Go therefore and make disciples of all the nations, baptizing them in the name of the Father and of the Son and of the Holy Spirit, teaching them to observe all things that I have commanded you; and lo, I am with you always, **even to the end of the age.**” Matthew 28:16-20 NKJV

“And He said to them, ‘Go into all the world and preach the gospel to every creature. He who believes and is baptized will be saved; but he who does not believe will be condemned.’ Mark 16:15-16 NKJV

“The words of the Preacher – PO Box 181, Beverley, 6304

Unique Strokes W.A. Painting & Decorating

Reg. No. 4236

ROB BAIN

QUALIFIED LOCAL TRADESMEN

For Guaranteed Traditional
Workmanship & Prompt Free Quotes

Phone: 08 9647 2102

Mobile: 0418 904 013



Garden Supplies Avondell Earthmoving

Sand Gravel Blue Metal

Blue Metal Dust Crushed rock mix for concrete

Pig manure mixed with straw

Sheep Manure Chicken Manure

All soils and manures can be mixed to your requirements.

BYO trailer loads or our 10³m truck

Phone
0429 088 689

Phone
0488 087 316

THE RED VAULT
RESTAURANT/COFFEE HOUSE



Opening hours

Tuesday - Wednesday 9.30am - 7pm

Thursday - Saturday 9.30am - 10pm

Another New Dinner Menu coming out soon

WE OFFER: ALL-DAY BREAKFAST

TAKE-AWAY & LIGHT LUNCHES, DRINKS,

COFFEE AND CAKE AND MAIN MEALS, DESSERTS

AFFORDABLE PRICES

CALL 96460008 115 VINCENT ST BEVERLEY



R.S.L
Italian Night

Members and Friends
Friday 8th August

Starts at 6.30

Beverley R.S.L. Hall

50 Forrest Street

\$20.00 per head

includes welcome drink.

Additional drinks \$3.00 each.

Bookings essential – 9646 0005.



HANDY TIPS



Repurpose an old picture frame as a serving tray.

HANDY TIPS



Use a paper plate to prevent splatters when using an electric whisk

LEH Earthmoving



Little Eco Hill



Backhoe - Bobcat - Bulk Haulage

Time to put that shovel down because guess who's back?

Dan the digging man!

- Experienced owner / operator
- Six wheeler tip truck and trailer
- Bulk Cartage including sand, gravel, blue metal etc. (supply and deliver)
- All aspects of sand pads (house, shed, water tanks)
- Site clearing and site clean-ups
- I dig holes and fill them back in again!

DAN WILKINSON

0417 093 090

9648 1006

PO Box 261 Beverley WA 6304

dan.zoe@bigpond.com

ABN: 76 315 246 782

BROOKTON PLUMBING

ABN: 37 675 595 336

FOR ALL YOUR PLUMBING MAINTENANCE AND GAS FITTING NEEDS

***PLUS SEPTIC WASTE REMOVAL**

PHONE:

SEAN 0413 480 543 or NATASHA 0422 013 889

PL: 7130 GF: 006947 SWR: T235

SAMBA - Card Game

Welcome any ladies interested in learning the card game

WHEN: Saturdays at 1.00pm

WHERE: CWA Hall, Dawson St.

Afternoon Tea provided

Enquiries 9646 1271

D.J. YATES

*BRICK & STONEWORK RESTORATION
 AUTHENTIC REPOINTING OF MORTAR
 RISING DAMP RECTIFIED
 PROPERTY MAINTENANCE*

PHONE DAVE ON 0419041542
 A/H 96412868

BEVERLEY BOWLING CLUB CORPORATE BOWLS 2014

Corporate bowls is back and will commence for a 6 week period.

From Friday 19th September to Friday 24th October 2014.

Start time 6:30pm.

Everyone is welcome, sporting groups, social groups and businesses.

Enter your team now.

Entry sheets are now at

Beverley Newsagency and Avon Trading.

Nominations close 12th September 2014.



Small landholder news
Small Landholder Information Service

agric.wa.gov.au/slis
facebook.com/DAFWAsmalllandholders

With spring just around the corner it is vital that you start to think about the season to come and plan what you need to do around your property.

If you decide to cut pasture for meadow hay, now is the time to decide which paddocks you will use. Lock up these paddocks and fertilise appropriately to ensure good production. Remember poor quality pasture will make poor quality hay!

Now is also a good time to assess the composition of your pastures. Assess their weediness and decide if they need re-sowing, fertiliser or lime application or plan for any weed control later in the season. Seek advice from your local rural supplier if you need to.

If you own horses it is important to also check your pasture for weeds like Paterson's curse, marshmallow weed and cape tulip, which are poisonous to horses.

Monitor this year's tree planting sites for any weeds. Weeds can compete with young trees and shrubs for light, water and nutrients. If weeds are becoming a problem you may need to hand-weed or carefully use chemical control. Mulching around plants can also reduce competition from weeds.

If you have any boggy areas on your property it is advisable to restrict stock access as this can cause soil structure decline and increase the risk of stock getting hoof problems.

For those with orchards, winter pruning of deciduous fruit trees should be nearing completion ready for the new season. Check your irrigation and ensure repairs or replacements are completed early so you are ready to irrigate when required.

Flies will begin to become more active during August as it starts to warm-up, and can be severe in September with warm, moist conditions causing flystrike. Make sure you monitor your stock closely. In spring, worm burdens build-up in young sheep and can cause scouring, which can also lead to flystrike.

Citrus growers should continue to be vigilant in their control practices for Mediterranean fruit fly – continue baiting and remove any unwanted fruit to keep numbers of Medfly under control.

Cattle producers need to consider spraying paddocks containing rotting hay to minimise stable fly breeding numbers. Residues of hay fed to cattle over the hot dry summer are now presenting a significant risk for stable fly breeding as a result of recent rainfall and record warm autumn and winter weather. Residues can be found either under and around hay feeders, in cattle yards, feedlot situations or in particular places in paddocks where hay bales/rolls are fed.

If you have any queries ask a question on our Facebook page at facebook.com/DAFWAsmalllandholders. We would love to hear from you!

Until next time

Jodie

**BEVERLEY
REDBACKS
CLUB NEWS**



Featured Events:

Saturday 2nd August AFA Round 15
Beverley vs. Kellerberrin/Tammin at
Beverley, followed by Vintage Horse
Racing Evening.

The Beverley Football Club regained
some of our early season form with
three consecutive victories through the
middle stages of the season. As we lead
into the business end of the season our
players will be aiming to remain in the
top two.

**Avon Hockey Association Round 8
(28th June 2014)**

Beverley vs. Jennacubbine at Beverley

Jennacubbine	4
Beverley	1
Margin:	3 goals

Goals: Beverley - Ali Lewis 1.

Best: Beverley - Ali Lewis, Emily Miller
and Chantelle Meade.

AFA Round 11 (29th June 2014)

Railways vs. Beverley at Northam

LEAGUE	1 st	2 nd	3 rd	4 th	Points
Beverley	3.3	6.5	9.11	14.14	98
Railways	1.5	6.6	10.7	11.10	76

Margin: 22 points

Goals: Beverley - James Turner 5; Troy
Bassett 2; Matthew McLean 2; Tim
Radcliffe 1; James Adams 1; James
Murray 1; Matt Galantino 1.

Best: Beverley -James Turner, Troy
Bassett, Matthew McLean, Matt
Galantino, Scott Minchin, Blake
O'Meagher, Dylan Gilbert and James
Adams.

RESERVES	1 st	2 nd	3 rd	4 th	Points
Railways	3.1	8.4	8.4	10.8	68
Beverley	0.0	0.0	0.2	1.6	12

Margin: 56 points

Goals: Beverley - Adam Smith 1.

Best: Beverley - Brock Fleay, Blake
Wansbrough, Tim Kilpatrick, Adam
Smith, Graeme Lewis and Charlie
Horrocks.

NETBALL

Railways	45
Beverley	23

Margin: 22 goals

Best: Beverley -Chaise Ludgate, Jen
Bartlett and Gemma Ridgway.

**Avon Hockey Association Round 9
(5th July 2014)**

Beverley vs. York Vipers at Beverley

York Vipers	3
Beverley	0
Margin:	3 goals

Best: Beverley -Lisa Mourach, Kelly
Mann and Hollie Smith.

AFA Round 12 (5th July 2014)

Cunderdin vs. Beverley at Cunderdin

LEAGUE	1 st	2 nd	3 rd	4 th	Points
Beverley	3.0	3.9	9.10	16.13	109
Cunderdin	3.5	3.7	6.12	8.15	63

Margin: 46 points

Goals: Beverley - Matt Galantino 4;
James Murray 4; Rhys Rowlands 3; Ben
Ireland 2; Tim Radcliffe 1; Troy Bassett
1; Owen Marsh 1.

Best: Beverley -Justin Mann, Scott
Minchin, James Turner, Matt Galantino,
Ben Ireland, Matt McLean, James
Adams, Owen Marsh, Stuart Murray and

Brett Jeffery.

RESERVES	1 st	2 nd	3 rd	4 th	Points
Cunderdin	4.7	7.12	16.16	22.18	150
Beverley	1.0	1.1	1.2	3.4	22

Margin: 128 points

Goals: Beverley - Beau McLean 1;
Darrell Hagan 1; Daniel Lea 1.

Best: Beverley - Beau McLean,
Daniel Gollan, Damien Murray, Josh
Sattler, Travis James and Phillip
Mattingly.

NETBALL

Beverley	57
Cunderdin	6

Margin: 51 goals

Best: Beverley - Kira Strange and
Chaise Ludgate.

Saturday 12th July 2014

**Avon Hockey Association: General bye
(School Holidays)**

AFA General bye

**(Thursday 10th – Saturday 12th July 14)
Country Football Championships Perth**

Day 1, Thursday 10th July

Lathlain Park

A Section – Game 1 Final Points

Avon	8.4	52
Great Northern	5.9	39

Margin: 13 points

Goals: Beverley - Troy Bassett 2; Matt
Galantino 1.

Best: Beverley - Justin Mann.

A Section – Game 2 Final Points

Avon	12.2	74
Lower South West	6.1	37

Margin: 37 points

Goals: Beverley - Matt Galantino 1.

Day 2, Friday 11th July

Bassendean Oval:

A Section – Game 1 Final Points

South West	7.7	49
Avon	4.6	30

Margin: 19 points



Shelley Wilkinson Photography



Shelley Wilkinson Photography

Goals: Beverley - Troy Bassett 1.

A Section – Game 2 Final Points
Avon 6.13 49
Upper Great Southern 7.1 43

Margin: 6 points

Best: Beverley -Matt Galantino.

Avon Hockey Association Round 10
(19th July 2014)

York Jets vs. Beverley at York

York Jets 4
Beverley 0

Margin: 4 goals

Goals: Beverley -

Best: Beverley - Chantelle Meade, Lisa Mourach and Carissa Shaw.

AFA Round 13 (19th July 2014)
Beverley vs. York at Beverley

<u>LEAGUE</u>	1 st	2 nd	3 rd	4 th	Points
Beverley	4-1	10-6	14-9	23-13	151
York	2-4	3-7	5-11	6-13	49

Goals: Beverley - Matt Galantino 7, Rhys Rowlands 3, James Murray 2, Dan Gilbert 2, Owen Marsh 2

Best: Beverley - Matt Galantino, Rhys Rowlands, Justin Mann, Owen Marsh and Dylan Gilbert.

<u>RESERVES</u>	1 st	2 nd	3 rd	4 th	Points
Beverley	1-0	4-1	5-1	6-2	32
York	6-1	10-9	17-12	20-19	139

Goals: Beverley - Mark Britza 1, Ian Ross 1, Rhys Edwards 1, Tim Kilpatrick 1 and Damien Murray 1

Best: Beverley - Damien Murray, Beau McLean, Brett Shaw, Ben Moulton and Rhys Edwards.

NETBALL

Beverley 40
York 19

Margin: 21 goals

Best: Beverley - Kira Strange, Gemma Ridgway and Chaise Ludgate.

Congratulations to:

First League game players for Beverley:
Adam Smith.

- 🏏 Rhys Rowlands and Tabitha Jaskolski, on the birth of their baby girl, Macey Joan, on Friday 27th June;
- 🏏 Tim Radcliffe, who played his 50th League game against Railways on Sunday 29th June;
- 🏏 Cliff Miller, who celebrated his 60th birthday on Saturday 5th July;
- 🏏 James Adams, Troy Bassett, Matt Galantino and Justin Mann, who all represented Beverley playing for Avon at the Country Football Championships in Perth from Thursday 10th – Saturday 12nd July;
- 🏏 Simon Broun, who celebrated his 60th birthday on Wednesday 23rd July;

Coming up:

Saturday 2nd August

AFA Round 15: Beverley vs. Kellerberrin/Tammin at Beverley, followed by Vintage Horse Racing Evening;

3:00pm, Saturday 2nd August

Avon Hockey Association Round 12: Allsorts vs. Beverley at Northam;

1:30pm, Saturday 9th August

Avon Hockey Association Round 12: York Cougars vs. Beverley at York;

Sunday 10th August

AFA Round 16: Federals vs. Beverley at Northam;

3:00pm, Saturday 16th August

Avon Hockey Association Round 14: Beverley vs. Aces at Beverley;

Sunday 17th August

AFA Round 17: Beverley (bye);

7:30pm, Wednesday 20th August

Beverley Ladies Hockey Club: Annual General Meeting at the Beverley Amenities Building;

Saturday 23rd August

Beverley Agricultural Show;

1:30pm, Saturday 23rd August

Avon Hockey Association Round 15: Jennacubbine vs. Beverley at Northam;

Sunday 24th August

AFA 1st Semi Final at Cunderdin;

Saturday 30th August

Avon Hockey Association 1st and 2nd Semi Final at Northam; and

Sunday 31st August

AFA 2nd Semi Final at Northam, hosted by Railways.

A reminder to all players, members, sponsors and supporters that you can now view all the latest news and events from the Beverley Redbacks by checking out our Facebook page at:

<http://www.facebook.com/beverley.footballclub?fref=ts>

To keep you informed and up to date on the all the latest news and events from the Beverley Football Club, simply register your email address with us at beverleyfc@bigpond.com and we'll add you to our mailing list.

See you at the footy!!!



Photos courtesy of Shelley Wilkinson



Beverley Golf Club Ladies Division

25 June 2014

The club trophy winner Jane Murray. The ladies who went to Katanning had a great time but did not bring any loot home. Sera won \$39 on the wheel and Lyn won \$37.

09 July 2014

The Lyn MacTaggart trophy winner was Sera Minchin and the runner up was Maxine Watts. Sera also won both pinnies.

16 July 2014

The Val Moir trophy winner was Maxine Watts and the runner up was Jane Murray. Pinnies for the day were Maxine and Marg. Marg played at Goomalling on 11 July and enjoyed her day out. Glenys played at Three Springs for 3 days and thoroughly enjoyed the scenery and had a little holiday afterwards.

Ladies golf is 10.30am on Wednesday's, we would love to see some new players come and join us.

SHAZMAC PLUMBING

PROUD TO BE YOUR LOCAL PLUMBER

Plumbing Licence: PL 5829 Gas Fitter Licence: GF 7422 RHL: L100443
ABN: 18 531 685 326

For all your plumbing & gas fitting needs

Phone 0408 189 987

PO BOX 116

BEVERLEY WA 6304

shazmac1@westnet.com.au

NO job is too big or too small.



DON'T FORGET. The September Blarney Edition deadline is Friday 22 August at 4.00pm.

Dawson's Concrete & Reinforcing

"Your Local Beverley Concreter"

- Concrete Formwork & Steel Fixing
- Driveways, Shed floors, Maintenance pits, Silo pads, Super sheds, House pads
- Fully mobile service
- Over 30 Years Experience
- 7 Days A Week
- Professional, Reliable Service

Phone for a Free Quote

SANDY DAWSON
Mobile: 0417 375 221
Email: pameladawson@bigpond.com

For all your air conditioning needs contact:-

Robert & Nathan Chamberlain

Avon Auto Air

Phone: 08 9647 2070

Mobile: 0428 472070

We are now accredited and registered to install and commission **Split System Air conditioners.**



wheatbelt
natural resource
management

Seedlings available!

Wheatbelt NRM has a limited number of seedlings we can offer to landholders for the 2014 National Tree Planting Day on the 27th of July.

These seedlings are salt tolerant and are appropriate for riparian areas (next to lakes and rivers) in Toodyay, Dowerin, Wyalkatchem, Tammin, Pingelly, Brookton, Beverley, Corrigin, Bruce Rock, Quairading, York, Northam and Cunderdin.

The seedlings do not need to be planted on the 27th of July.

The seedlings need to be planted in an area that will not be grazed by stock in the future. Sites that can show connectivity to patches of remnant vegetation will be given a higher priority for seedlings than those that can't.

Please contact Rowan Heggulun by AS SOON AS POSSIBLE please on 96703101 or email rheggulun@wheatbeltnrm.org.au, outlining:

- The area you want to revegetate
- How many seedlings you are requesting.

Thank you



BEVERLEY TYRE SERVICE

City Prices

All Major Brands

Second Hand

Batteries, Repairs, Fitting and Balancing



Bridgestone Preferred Dealer

Open Saturday mornings, except long weekends

Ph/fax Alan on 9646 1607 or a/hrs 0428 129 575

48 Dawson Street

(Old Telecom Shed)



AVON VALLEY WINDSCREENS

Windscreens and Glazing

Automotive, Residential
and Commercial Glazing

Ron Robinson

0429 001 393

LIC:MR11693

We come to You!



ROYAL ANTEDILUVIAN ORDER OF BUFFALOES



GLE (Inc)

QUAIRADING BEVERLEY NO.163

We meet the first Wednesday of every month at the Masonic Lodge, Hunt Road, Beverley

The objects of our order are Philanthropy and Good Fellowship.

For more info contact Tom 0419 945 240



BEVERLEY REDBACKS HOCKEY CLUB



We are over half way through the Season with only a hand full of games left to play. Make sure you come and support the girls in their last home game on 16th August.

Round 7 Beverley vs Jenna 28th June

After a week off, Beverley met with Jennacubbine. Jenna are a very skilled team in the Avon Association, but this didn't deter the girls from keeping them scoreless for 25 minutes. Jenna then scored two quick goals, with one being through a Penalty Flick. The second half saw Ali Lewis score (her first game back after the unfortunate accident the last time we played at home) with a textbook goal! You would have thought we had just won the Grand Final in our celebrations. Even though we lost against a strong side, the girls could be very proud in the way everyone played. Special thanks to Graeme for being a fill in coach while Chris is away. Huge huge thankyou to Di Smith who was able to umpire for us at the very last minute!!

Beverley 1; Jenna 4
Goal Scorers: Ali Lewis

Award Winners

Ali Lewis - Coaches Award - Sponsored By: Garry and Sarah Miller, Beverley Transport
Emily Miller - Captains Award - Sponsored By: Trevor and Amanda McLean, Waterbrae
Chantelle Meade - Play of the day - Sponsored By: Northam Tavern

Round 8 Beverley vs York Vipers 5th July

York made their way to Beverley in a game that proved to be very fast and hard fought by both sides. All the girls played extremely well against a tough opposition, especially as some girls were playing in new positions. Unfortunately York walked away winners of the day, but the girls should feel proud of their efforts.

Beverley 0; York 3
Goal Scorers:

Award Winners

Lisa Mourach - Coaches Award - Sponsored By: Garry and Sarah Miller, Beverley Transport
Kelly Mann - Captains Award - Sponsored By: Trevor and Amanda McLean, Waterbrae
Hollie Smith - Play of the day - Sponsored By: Northam Tavern

Round 9 York Jets vs Beverley 19th July

After another week off, we made our way to York to face the York Jets. With a few players unwell or out of action, we took them on with determination in what turned into a very defensive game, with the majority of the play down Yorks end of the field. York walked away winners on the day but the team as a whole, especially the defenders, should be very proud of their efforts within the defensive circle.

York 3; Beverley 0

Award Winners

Chantelle Meade - Coaches Award - Sponsored By: Garry and Sarah Miller, Beverley Transport
Lisa Mourach - Captains Awards - Sponsored By: Trevor and Amanda McLean, Waterbrae
Carissa Shaw - Play of the Day - Sponsored By: Northam Tavern

Beverley Hockey Club Cake Stall - Saturday 19th July

Thankyou to everyone who supported our recent Cake Stall by either Donating Cakes/Money/Prizes and to those who bought Raffle Tickets or baked goods. The funds raised will go into our term deposit to continue working towards our goal of having our own playing field.

Raffle Winners

Wood - Billie T
Raffle 1 - Alex McDonald
Raffle 2 - Marg Mourach
Raffle 3 - Jen Petchell

Sponsors & Supporters Dinner - Saturday 16th August

Following our game on Saturday 16th August we would like to invite all our fabulous sponsors, members and supporters to

join us for an afternoon at our last home game for 2014. This will be followed by dinner and drinks to show our appreciation to everyone for their support throughout the Year. So come along and enjoy our last home game and stay for dinner and drinks.

Beverley Jackets and Shirts

We are currently taking orders for our new Redbacks Zip up Hoodies(not sport specific- \$45) and Ladies Polo Tees (\$35). If you would like to place an order please contact Chantelle Meade or Kathryn Mclean. Orders and Payment due by 17th August.

Cheques payable to Beverley Redbacks Hockey Club

Direct Deposit - BSB 016 540 Account 201349436

Congratulations!

The Baby Boom in Beverley hasn't finished yet with the exciting news of Megan and Chad Vandenberg's upcoming arrival in December. Congratulations to the both of you.... I think we have enough little ones to start a crèche at each Hockey Game now.

UPCOMING DATES TO REMEMBER

Saturday 2nd August – Allsorts vs Beverley – 3pm in Northam

Saturday 9th August – York Cougars vs Beverley – 1.30pm in York

Saturday 16th August – Beverley vs Northam Aces – 3pm in Beverley (Sponsors and Supporters Day)

Wednesday 20th August – Redbacks Hockey Club AGM and Players Tea following Training at 7.30pm

Saturday 23rd August – Jenna vs Beverley – 1.30pm in Northam

And then Finals Start

If you want to stay up to date with any Hockey News, please register your email address by emailing beverleyhockey@live.com.au

THANK YOU TO OUR 2014 SPONSORS!!

Inoski Design, Beverley Electrical Services, Freemasons Tavern, Farm Direct Stock Feed Supplies, U Beauty Country, Hotel Beverley, Waterbrae – Trevor & Mandy McLean, Beverley Transport, Beverley Tyre Service, Terry & Sandy Woods, Beverley Newsagency, Northam Tavern, Beverley Supermarket & Liquor.

We love having supporters at our games, especially our home games. So why not come down and support the girls.

WE LOOK FORWARD TO SEEING YOU AT THE GAMES

RSL Indoor Markets



Held on the first Saturday of each month at the RSL Hall, 50 Forrest St Beverley.

Next Market 2nd August

Coffee and sausage sizzle a house specialty.

Sellers set up from 7.30, \$6 per table.

Buyers from 9.00 to 12.00.

Contact Irene Oram on 9646470 for more details.

BEVERLEY REDBACKS HOCKEY CLUB AGM NOTICE



The Beverley Redbacks Hockey Club advises all players, members and supporters that the Annual General Meeting will be held on **Wednesday 20 August 2014 at 7:30pm** at the Amenities Building followed by a shared casserole dinner. All welcome.

Any queries, contact Secretary Chantelle Meade 0429 418 576



ATTENTION MEMBERS

Annual General Meeting of the Beverley Community Resource Centre will be held on **Monday 8 September at 6pm at the CRC.**

Light refreshments will be served after the meeting.

For more information, please contact the centre on 9646 1600

Beverley Sub-Branch of R.S.L

Annual General Meeting

14 August at the R.S.L Hall
50 Forrest St

Commencing 6.30pm.
General Meeting to follow.

Mews Electrical Service Lothar Mews Electrical Contractor

Lic. No. 000797

PO Box 429
Beverley WA 6304

Ph/ fax: 08 9646 1918
Mob: 0419 851 934



Beverley Earthmoving Contractors

40 years experience in all aspects of Earthmoving.

One stop shop for all your Septic Systems.

Supply & Install

Plumbing Licence PL 5829 Gas Fitting Licence GF 7422

ALL ASPECTS OF EARTHMOVING

House Pads Site Cuts

Block Clearing Laser Levelling

Service Trenches

To Shire and engineer specifications.

SAND SUPPLIES

Metal Gravel

BULK HAULAGE

Truck and Dog Trailer Backhoe 315 SE John Deere

Side Shift Extender Hoe

Bob Cat Loader

Forklift Post Hole Borer

General Freight ingage and over width loads credited.

Phone:

**Ron 0429 088 689 or
Lorraine 0488 087 316**

C & B TRANSPORT

DELIVERING GENERAL FREIGHT AND CHILLER GOODS

3 DAYS PER WEEK OR AS REQUIRED

TO

BEVERLEY, BROOKTON, PINGELLY

FROM

PERTH DEPOT CANNINGVALE MARKETS

PLEASE CONTACT PAUL BALDWIN

ON

0417 953 968 or 08 9646 0461

BIG ENOUGH TO DO THE JOB SMALL ENOUGH TO CARE

BEVERLEY NETBALL CLUB

We hope all members and their families had an enjoyable school holidays and have come back with some determined spirit to see if we can close the gap on some of those game scores. Yes there has been a couple of close games but still no need for either Beverley team to be scared of heights from where they sit on the Association Ladder. None the less, we can still play for fun can't we? You will notice the netball storage shed situated on the Bowling Club block has finally been re-homed. This meant some rearranging had to happen in the Amenities store room to fit our equipment in. Thank you to Nat and Wayne Ashworth, Jen and Sheldon Petchell, Glenys and Mark Petchell and Amor Moulton for all their efforts in installing our new cabinets and making the Amenities storage unit more user friendly. We would like to extend a huge thank you to Glenys Petchell and her helpers for not just attending our home games, but also for providing hotdogs and hot beverages to spectators and players to warm those bellies on cold Friday night games. So everyone who comes down to the next home Friday night game can expect lamb and gravy rolls. Members have another "Players Tea" on Saturday evening on Saturday 26th July at the Amenities. So bring your friends, bring your families and most importantly bring your food! Don't miss out on a great night. With the Beverley Show approaching, it is time to remind netball ladies who are available to help in the show bag van to fill in a time segment on the roster to help out. To our supporters, friends and those passing by, please stop and say hello to the lovely girls in the Beverley Netball Club show bag van and perhaps we could tempt you to buy a show bag or two.

Upcoming games

Saturday 26th July

Pingelly Green Vs Hunters 1:45pm and Brookton Glory Vs Spinners 3:15pm in Pingelly.

Friday 1st August

Spinners Vs Pingelly Green 6:45pm and Pingelly Pink Vs Hunters in Brookton.

Saturday 9th August

Hunters Vs Brookton Glory 3:15pm and Spinners have a bye.

Friday 15th August is the Derby. The two Beverley teams will battle it out for the Jurakine Shield at 6:45pm in Beverley. *Come and support your team!*

BEVERLEY REDBACKS SUPPORTERS

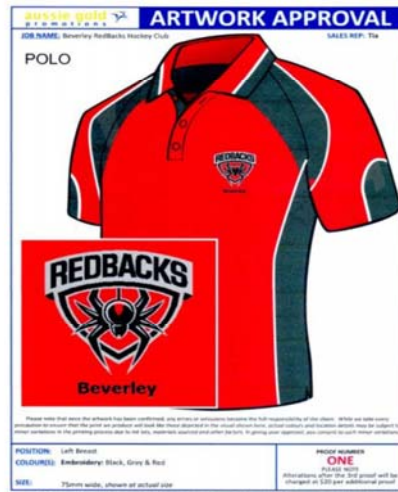
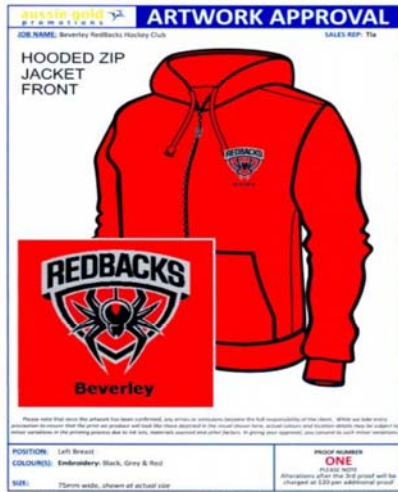
JUMPER & LADIES POLO SHIRT

Please place your order and payment with Chantelle Meade or Kathryn McLean

Please see Football Club Committee for Men's Polo Shirts

Orders and payment due by: 17th August 2014

Hooded Fleece Zip Up Jacket \$45	Half Chest (cm)	Ladies Polo Shirt \$35	Half Chest (cm)	Length
S/10	44	8	45	61
S/12	47	10	47.5	63
XS	52	12	50	65
S	57	14	52.5	67
M	62	16	55	69
L	67	18	57.5	71
XL	72	20	60	72
XXL	77	22	64.5	73
		24	69.5	74
		26	74.5	74



NAME: _____ PHONE: _____

EMAIL: _____

Hooded Zip Front Jacket

SIZE: _____ QUANTITY @ \$ 45 ea: _____

Up Front Payment Required
by 17th August 2014

Contact

Kathryn M: 0427464050

Chantelle M: 0429418576

Ladies Collared Polo Shirt

SIZE: _____ QUANTITY @ \$ 35 ea: _____

PAYMENT METHOD: Cheque EFT Cash

Cheques payable to Beverley Redbacks Hockey Club

Bank Details: BSB 016 540 Account: 201349436 (use your name as reference)



Travelling Overseas or around Australia?
To book a holiday of a lifetime
Contact your local travel professional
Catherine Riches

Tel: (61)8 9647-2173 Email: broker3@bigpond.com
Travel Associates Australia Pty Ltd - Licence Nbr:9TA1188
Member of Travelscene American Express

COUNTRY LINE DANCING



Every Thursday
9.30am
to 12.00pm

Beverley Town Hall

**Enquires: Jill
9646 0283**



Beverley Horse and Pony Club



Giddy Up ! Giddy Up!

Yet another fantastic rally was held for our members on the 20th of July. Although we were a few riders down and our CCC, Mrs Appelbee, was not well, the riders had a fantastic day. Flat and jumping lessons were both in the morning and the afternoon with the wonderful Mrs Perry and Chaise Ludgate. I think there were some exhausted riders, ponies and instructors by the end of the day! Tess kept Jessica and Emily very busy—and it seemed the highlight of the day was some cross country jumping! Hopefully lots of our riders will be attending the fantastic Avon Zone Camp in the school holidays and will have lots of stories to tell.

OUT AND ABOUT

Avon Zone Camp

On the 5th, 6th and 7th of July a group of very keen pony clubbers packed their swags and ponies then headed to Northam for the annual Avon Zone Camp at the Avon Valley grounds. Eight Beverley riders joined 32 other riders from York PC, Avon Valley SJPC, Toodyay PC and South Midlands PC. All riders were grouped with riders of similar ability and participated in three days of lessons that ranged from horsemastership, games, flatwork, jumping and active riding. All riders had a fantastic weekend and headed home for a well earned rest



Bianca ready for tent pegging.



Jess and Bluey ready for rain



Katie jumping

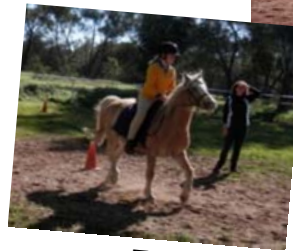
Vicky lunging Rusty



Tealah & Cherry in action



Kip



Talia



Emily doing Round the World

Kellerberrin ODE

Well done to Amy who attended and complete her first ODE @ Kellerberrin. The event was held over two days and Amy's class had over 30 competitors—massive. Amy had a fantastic two days and had a super ride on the cross country with only a few time penalties. She finished 16th overall which is fantastic and with a big smile! Well done Amy!



Amy and Tom in action



One of the cool jumps @ Keller

Coming Events In Beverley

Saturday	02 August	Vintage Horse Racing Evening
Thursday	07 August	Business Sundowner at CRC
Friday	08 August	RSL Italian Night
Sunday	10 August	BHPC Rally
Monday	11 August	Shire of Beverley Community Grants Close.
Wednesday	13 August	Author Talk "Secrets that Mothers Keep" at CRC
Thursday	14 August	Friendly Club
Sat - Sun	16 and 17 August	Avondale Open
Saturday	23 August	Beverley Agricultural Show Day
Thursday	28 August	Garden & Tree Club Bus Trip to Toodyay
Friday	29 August	Mad Men's Muster
Saturday	30 August	BORMSA Autocross
Friday	05 September	Primaries Men's Triples - Bowls
Saturday	13 September	WA Wyandotte Fanciers 22nd Annual Show
Saturday	13 September	Country Choir Bash at Platform Theatre
Saturday	20 September	BHPC All Breeds Show
Sunday	21 September	BHPC Rally
Monday	22 September	drumMUSTER
Sunday	28 September	BORMSA Autocross
Sunday	05 October	Beverley to Perth Cycling Race
Sunday	10 October	BHPC Rally
Saturday	18 October	Avondale Bush Dance
Saturday	25 October	BORMSA Junior Motorkhana & Twilight Khanacross
Monday	20 October	Wild Women of the West Seminar
Friday	24 October	St Anglican Society Flower Show
Saturday	08 November	Beatles / Blues Brothers Night at Platform Theatre
Saturday	08 November	Brookton Choral Society 50 year Reunion
Friday	19 December	Community Christmas Party at Platform Theatre

The flag was flown at half-mast on the Beverley Town Hall as a mark of respect to:-

- ROBIN ALBERT BOYLE (BOB)
- ELIZABETH ANN HUTCHINSON (BETH)

DISCLAIMER

The information in this publication is of a general nature as a service to the ratepayer. The articles included herein are not intended to provide a complete discussion of each subject. While the information is believed to be correct, no responsibility is accepted for its accuracy. No liability is accepted for any statements of opinion or any error or omission.

BEVERLEY BLARNEY

1100 copies each month

ADVERTISING RATES

Size A: (~122 x 180mm)	\$82.00 GST inc
Size B: (~122 x 89mm)	\$41.00 GST inc
Size C: (~60 x 89mm)	\$25.00 GST inc
Size D: (5 lines)	\$ 8.00 GST inc
Size E: (3 lines)	\$ 5.00 GST inc
Size F: (122 x 135mm)	\$62.00 GST inc

Club notes etc. are free of charge

**The deadline for the next
Beverley Blarney is 4pm
Friday 22 August 2014**

Shire of Beverley
PO Box 20, Beverley, 6304

Tel: 9646 1200 or Fax: 9646 1409
Email: blarney@beverley.wa.gov.au


Don't be too hard on yourself. There are plenty of people willing to do that for you. Love yourself and be proud of everything that you do.
Even mistakes mean you're trying. By Susan Gale

Advertise your upcoming events here.
Email: blarney@beverley.wa.gov.au

EDITION	DEADLINE DATE
SEPTEMBER EDITION 2014	FRIDAY 22 AUGUST 2014
OCTOBER EDITION 2014	MONDAY 22 SEPTEMBER 2014
NOVEMBER EDITION 2014	THURSDAY 23 OCTOBER 2014
DECEMBER EDITION 2014	MONDAY 24 NOVEMBER 2014
JANUARY EDITION 2015	THURSDAY 18 DECEMBER 2014 (earlier due to Christmas break & offices closed)

1100 copies each month

Beverley Blarney




Advertise your business
here!

Beverley in August 2014

Photos courtesy of Colleen Sleer Photography



Monday	Tuesday	Wednesday	Thursday	Friday	Saturday	Sunday
				1	2 <i>RSL Markets</i> <i>Vintage Horse Racing Evening</i> <i>Football in Beverley</i> <i>Men's Golf</i>	3
4 <i>Weight Watchers</i> <i>Dance</i> <i>LEGO Club</i> <i>Bridge @ CWA</i>	5 <i>HACC</i> <i>Men's Shed</i> <i>Stay Active</i> <i>Quilting</i> <i>Ambulance</i> <i>Garden & Tree Meeting</i>	6 <i>HACC</i> <i>RAOB</i> <i>Ladies Golf</i>	7 <i>Line Dancing</i> <i>Playgroup</i> <i>Business Sundowner</i>	8 <i>Karate</i> <i>RSL Italian Meeting</i>	9 <i>Men's Golf</i>	10 <i>BHPC Rally</i>
11 <i>Weight Watchers</i> <i>Dance</i> <i>LEGO Club</i> <i>Bridge @ CWA</i> <i>Shire Community Grants Close</i> <i>Junior Hockey Registration</i> <i>Historical Meeting</i>	12 <i>HACC</i> <i>Men's Shed</i> <i>Stay Active</i> <i>Quilting</i>	13 <i>HACC</i> <i>RAOB</i> <i>Ladies Golf</i> <i>BOOKLAUNCH "Secrets Mothers Keep"</i>	14 <i>Line Dancing</i> <i>Playgroup</i> <i>Friendly Club</i> <i>CWA Meeting</i> <i>RSL AGM</i>	15 <i>Karate</i> <i>Colouring In Competition Closes</i> <i>Netball Derby in Beverley</i>	16 <i>Avondale Open</i> <i>Hockey in Beverley</i> <i>Men's Golf</i>	17 <i>Avondale Open</i> <i>St John Ambulance Busy Bee</i>
18 <i>Weight Watchers</i> <i>Dance</i> <i>LEGO Club</i> <i>Bridge @ CWA</i>	19 <i>HACC</i> <i>Men's Shed</i> <i>Stay Active</i> <i>Quilting</i> <i>Ambulance</i> <i>St Mary's Meeting</i>	20 <i>HACC</i> <i>RAOB</i> <i>Ladies Golf</i> <i>Hockey AGM</i> <i>Masonic Lodge 7.30pm</i> <i>Hockey AGM</i>	21 <i>Line Dancing</i> <i>Playgroup</i>	22 <i>Karate</i> BLARNEY DEADLINE	23 BEVERLEY SHOWDAY 	24 <i>Men's Golf</i>
25 <i>Weight Watchers</i> <i>Dance</i> <i>LEGO Club</i> <i>Bridge @ CWA</i>	26 <i>HACC</i> <i>Men's Shed</i> <i>Stay Active</i> <i>Quilting</i> COUNCIL MEETING	27 <i>HACC</i> <i>RAOB</i> <i>Ladies Golf</i>	28 <i>Line Dancing</i> <i>Playgroup</i>	29 <i>Karate</i> <i>MAD MENS MUSTER</i>	30 <i>BORMSA Autocross</i> <i>Men's Golf</i>	31