



BEVERLEY BLARNEY

Edition 470 December 2023 No Charge

Beverley Community Christmas Party

Saturday Dec 23 2023

at the Station

5pm Circus skills workshop

6pm Santa arrives

6.25pm Raffle draw

6.30pm Mr Snotbottom (kids' comedian)

7.20pm Family show "Natural Wings"

8pm Christmas Songs by candlelight

Free community event



BEVERLEY STATION ARTS
GALLERY & PLATFORM THEATRE



 **Beverley**
Community Resource Centre

SHIRE OF BEVERLEY PRESIDENT'S REPORT



Planning Institute of Australia Awards.

On the night of Friday 17th November, I attended the Awards presentation of the Planning Institute of Australia with the CEO Stephen Gollan and Manager of Planning & Development Services Stefan de Beer. The event was held in the Westin Hotel. These Awards are presented annually to various projects within Western Australia which are judged to be exceptional and contributing significantly to both the State and the relevant community.

Beverley had been nominated in two categories for the Vincent Street redevelopment.

Whilst Beverley did not win, Beverley was awarded two "*Commendation for Planning Excellence*" in the categories of "Great Place" and "Outstanding Regional Project". I would like to recognise the efforts of the Manager of Planning & Development Services at this point as Stefan was delegated the role of responsibility for this project and this is due reward for his considerable efforts.

For the three of us it was a great privilege to accept these awards on behalf of the community and Shire. These awards complement the State Heritage Award Beverley won last year for the Street Trail.

Annual Electors' Meeting.

It is that time of the year when we hold the Electors' Meeting and this year it is set for Tuesday 12th December at 10:00 am. Please refer to the formal notice in this month's Blarney.

What is very pleasing is that Beverley will be one of a very few Local Governments in the State who will be able to hold their Electors' meeting before the end of the year. Electors' meetings cannot be held until the Annual Report has been finalised which includes completion of the Financial Statements and a signed Audit Report.

I attended a seminar conducted by the Office of Auditor General on Wednesday 15th November at which the Auditor General reported that of the 147 Local Governments in the State, only six Audit Reports had been signed. One of these is Beverley. This is a credit to our Administration and particularly our Deputy CEO and CFO, Simon Marshall who has worked diligently with our Auditors to achieve this result. In this matter Beverley has achieved Best Practice.

CEO Leave.

The community may have noticed recently that our CEO has been absent? The reason is that he has finally decided to take some of his Long Service Leave which has accumulated and is required to be taken to avoid excessive accumulation. More of this Leave will be taken in the New Year.

In the meantime, the Deputy CEO, Simon Marshall has stepped up to the role of Acting CEO in Stephen's absence. On behalf of the Council, I would like to thank and congratulate Simon for the manner in which he has conducted himself during this time while also having to deal with the Audit.

Council Meeting Dates 2024.

At the last Council meeting, the Council decided to change the day on which formal meetings will be held. It was agreed to change from the fourth Tuesday to the fourth Wednesday of each month. One of the reasons for the change was to make it easier for Management to deal with Agendas and supplementary information especially where a Public Holiday falls on a Monday. Details of the actual dates can be found in the Shire Notes in this Blarney.

Another Year Gone.

Finally, as this is the last Blarney for 2023, I would like to thank the Councillors and all staff for the efforts this year and to wish everyone a Merry Christmas and Happy New Year.

Cr David White

Shire President

Water supply in a bushfire

This information could save your life

While leaving high-risk bushfires is the safest option, if you plan to stay and defend your home, you must have an **INDEPENDENT** water supply and pumping capability. This typically requires water tanks of at least 20,000 litres, pump and generator.

This is required as mains water supply and pressure cannot be guaranteed during a bushfire due to the risk of power cuts, fire damage and extreme demand.

Use the Department of Fire and Emergency Services resources to develop your personal bushfire plan: mybushfireplan.wa.gov.au. You can also download the My Bushfire Plan app via the App Store or Google Play to access your bushfire plan anytime - even without an internet connection.

To support bushfire plans, if you have groundwater bore access to surface water, you can take and store emergency water without it counting against your annual entitlement. For more information on this, and for the location of emergency bushfire water supplies in dryland agricultural areas, visit the Department of Water and Environmental Regulation website.

Drinking water

We recommend you keep a supply of drinking water on hand throughout summer in case your water supply is interrupted.

Assistance for customers affected by bushfire

After a bushfire, we can assist you with issues such as damaged water meters and payment difficulties. If you have been affected by bushfire please call us on **13 13 85**.

The Emergency WA website **emergency.wa.gov.au** provides emergency information and community safety warnings. Call **000** in a life-threatening emergency or the SES **132 500** for emergency assistance.



**MAKE YOUR
BUSHFIRE PLAN**

A bushfire plan can help keep you and your family safe.
Create one now in under 15 minutes.
mybushfireplan.wa.gov.au



Bushfires and water supply

A message for fire fighters

Before
you hook into
the water supply
call us 24/7 on
13 13 75

What to do in an emergency...

Before you hook into the water supply system, **call us on 13 13 75** (24/7). If we know where you're headed, we may be able to help maintain supply or provide an alternative location that has better pressure.

Unfortunately, there is no guarantee that we can prolong water supply or pressure, and experience has shown that once a town is threatened, supply and pressure are at risk.

Hydrant location – if you are unsure where the closest hydrants are located, please contact DFES or our Operations Centre on 13 13 75, who will provide you with the exact locations.

Testing – if you intend to test hydrants in your area, please let us know first, in the event of any discoloured water complaints from nearby properties.

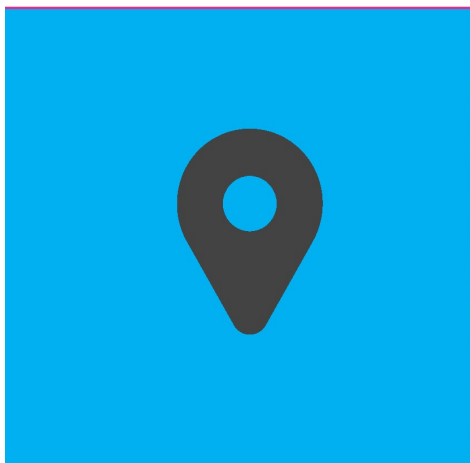
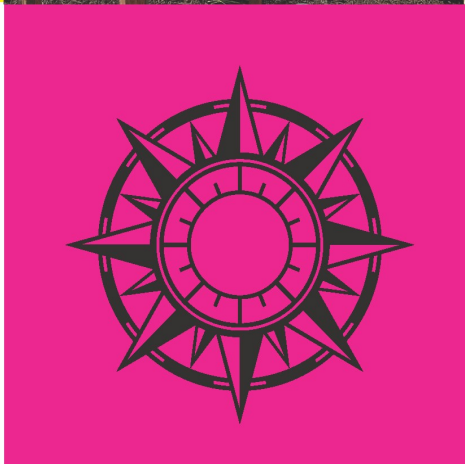
Broken hydrants – any issues with hydrants should be reported up through DFES. DFES will contact Water Corporation and a work order will be actioned immediately.

Reminder to the community – help us spread the word that people cannot rely on mains water during a bushfire due to the risk of power cuts, fire damage and extreme demand.





BEVERLEY TRAILS....



For more information on these trails and others in the Shire go to the beverleywa.com website.

www.beverleywa.com/trails



WHATS ON..

KEEP US UP-TO-DATE WITH YOUR EVENTS

We need all clubs / groups / businesses to help
keep the Beverley calendars full and up-to-date
for locals and visitors to town!

Email dates to :

tourism@beverley.wa.gov.au

and

blarney@beverley.wa.gov.au

Mains water supply cannot be guaranteed during a bushfire

Water Corporation is prepared for bushfire season. However, we cannot guarantee that water pressure or water supply will be maintained in the event of a bushfire. Extreme demand, fire damage and power cuts can all result in a total loss of water.

If you plan to stay and defend your property during a bushfire, you must have your own independent water supply and pumping capability. You cannot rely on mains water.

Details and resources about how to prepare for bushfire season can be found at mybushfireplan.wa.gov.au

For warnings and advice visit emergency.wa.gov.au



Beverley Landfill Site Opening Hours

Saturday

8.00am – 4.00pm

Sunday

8.00am – 4.00pm

Monday**

8.00am – 3.30pm

****Please Note:**

EARLIER CLOSING TIME

**CLOSED Christmas Day
and Total Harvest Ban Days**

Please Be A Responsible Dog Owner



Clean Up After Your Dog



LOCAL GOVERNMENT ORDINARY POSTAL ELECTION NOTICE OF RESULTS Shire of Beverley

The result of the Ordinary Election conducted as a postal vote on Saturday, 21 October 2023 is as follows:

District 3 Councillors	Candidates	First Preferences	Final Votes	Expiry of Term
	RIDGWAY, Dee	484	167	16 October 2027
	BROWN, Darryl	79	160	16 October 2027
	SHARDLOW, Barry	33	56	
	LAWLOR, Chris	68	167	16 October 2027
	Total Formal Votes	664		
	Total Informal Ballot Papers	5		

Denise Jo RIDGWAY is elected as Councillor for the Shire of Beverley and will hold office until 16 October 2027.

Christopher John LAWLOR is elected as Councillor for the Shire of Beverley and will hold office until 16 October 2027.

Darryl Lee BROWN is elected as Councillor for the Shire of Beverley and will hold office until 16 October 2027.

Notice is further given that the following person **Barry SHARDLOW** is the first unelected candidate for the purposes of Schedule 4.1A of the *Local Government Act 1995*.

Natalie ASHWORTH
RETURNING OFFICER
0476 817 885



WESTERN AUSTRALIAN
Electoral Commission

		2023 Ordinary Election Shire of Beverley (Councillor) Calculation Steps Report 3 Candidates to be Elected								
			RIDGWAY, Dee	BROWN, Darryl	SHARDLOW, Barry	LAWLOR, Chris	Exhausted	Lost Fractions	TOTALS	Elected
Total Votes: 669 Informal Votes: 5 Formal Votes: 664 Quota = 664/(3+1)+1 = 167										
First Preferences		Votes	484	79	33	68	0	0	664	1st. RIDGWAY, Dee
RIDGWAY, Dee	Surplus	Votes Rec'd	-317	75	22	111	107	2		2nd. LAWLOR, Chris
		Progress Votes	167	154	55	179	107	2	664	
LAWLOR, Chris	Surplus	Votes Rec'd		6	1	-12	2	3		3rd. BROWN, Darryl
		Proaress Votes	167	160	56	167	109	5	664	



FIRE CONTROL

HARVEST BANS & FIRE CONTROL

IN CASE OF A FIRE EMERGENCY, DIAL 000

For information regarding fire emergencies, information is available at www.emergency.wa.gov.au

PROHIBITED BURNING 2023

The Shire of Beverley PROHIBITED BURNING will begin on the **1st of November 2023**. During this period NO burning is permitted. Blade slashing and mowing of dry vegetation is also prohibited. Please remain vigilant against the threat of bushfire over the Summer.

Fire Control Officers

Chief Fire Control Officer	Bill Cleland	9647 2054	0428 472 054
Deputy Chief Fire Control Officer	Deane Aynsley	9646 6246	0428 466 246

Brigades

Central	Travis Boyle		0438 815 066
North East	Adam Smith		0429 182 231
South East	Brett Shaw		0427 481 028
Avondale	Andrew Shaw	9648 1022	0428 481 022
Avondale	Justin Mann		0448 979 234
Dale-Kokeby	Jack Barrett-Lennard		0412 310 340
Dale-Kokeby	Rob Fisher		0427 472 045
Dale West	Paul Schilling	9647 1008	0427 158 908

Harvest Bans And Extreme Fire Danger Warnings

No burning whatsoever is permitted on days of HIGH or above FIRE DANGER or where WINDS EXCEED 20 km/hr. Harvest bans and the prohibiting of vehicle movement in paddocks are broadcasted daily on RadioWest and ABC radio.

Dress Standard for Fighting Fires

The minimum standard of dress for ALL persons attending a fire is:

- LONG PANTS
- LONG SLEEVE SHIRT
- BOOTS

Any person not conforming to this standard and not meeting minimum training standards will be requested by the Fire Control Officer to leave the fire ground. If you choose to remain on the ground, it is at your own liability.

SHIRE NOTICES



Annual General Meeting of Electors

Notice is hereby given that the Annual General Meeting of Electors for the 2022/23 Financial Year will be held in the Cornerstone Community Centre, 141 Vincent Street, Beverley on **TUESDAY, 12 DECEMBER 2023**, commencing at **10:00am**.

Order of Business

1. Adoption of 2022/23 Annual Report
2. General Business

As per Section 5.5 of the *Local Government Act 1995* copies of the 2022/23 Annual Report are available from the Shire Administration Office, located at 136 Vincent Street Beverley, during normal office hours or on the Shire website.

To enable staff time to adequately research answers to questions, it would be appreciated if such enquires could be lodged at the Shire Office at least seventy two (72) hours prior to the scheduled commencement of the meeting.

STEPHEN P GOLLAN
Chief Executive Officer



Draft Disability Access and Inclusion Plan

The draft Disability Access and Inclusion Plan 2023 – 2028 is available for final comment. Please direct any feedback to execassist@beverley.wa.gov.au no later than Wednesday 13 December. Thank you to everyone in the community who participated via workshops, town tour or survey's. Your comments and thoughts are appreciated.



Council Meetings

The last Council Meeting for 2023 will be on Tuesday 19 December 2023. There will not be another Ordinary Council Meeting until Wednesday 28 February 2024. Please note that in 2024, Council meetings will be held on the fourth Wednesday of the month (moving from a Tuesday).

Wednesday 28 February
Wednesday 27 March
Wednesday 24 April
Wednesday 22 May
Wednesday 26 June
Wednesday 24 July
Wednesday 28 August
Wednesday 25 September
Wednesday 23 October
Wednesday 27 November
Wednesday 18 December



Merry Christmas!

The Shire of Beverley Administration Office will close for the Christmas and New Year holiday period at 4pm Friday 22 December 2023 and reopen on Tuesday 2 January 2024.

Please ensure your licensing requirements are taken care of by 3.30pm Friday 22 December 2023.

From the Councillors and Staff at the Shire of Beverley we wish everyone a safe and happy festive period and look forward to serving you in 2024.

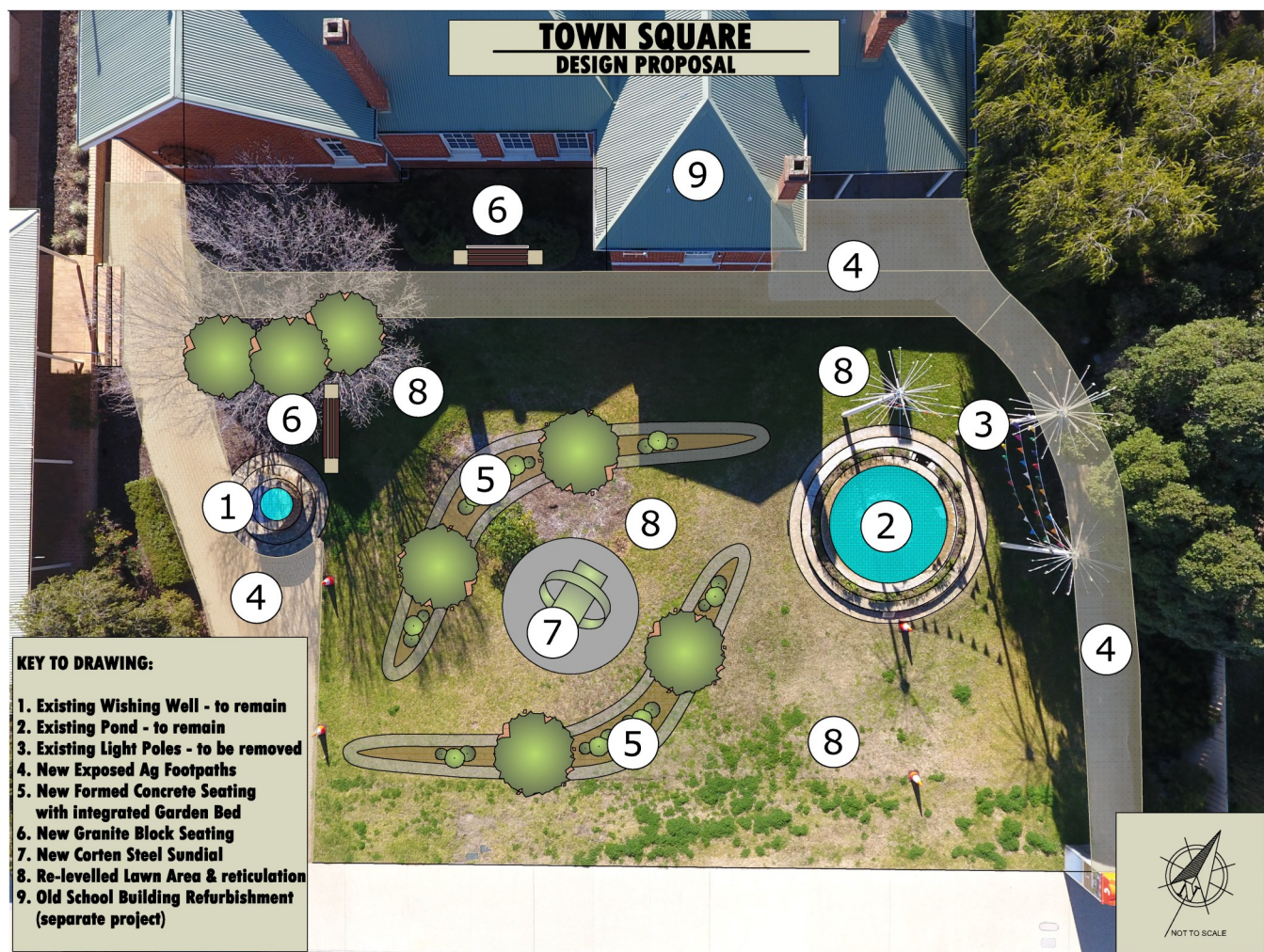


Old School Building Refurbishment

Subject to tender costs, the Old School Building will be refurbished in 2024 to be used as a Council Civic Centre. Council meetings, committee meetings, community workshops and Citizenship Ceremonies will be amongst regular uses for the building. Council are not knocking the building down or changing its front façade. The rear outside toilets will be demolished as they no longer meet Building Code Australia standards. They will be replaced at the rear of the building. The refurbishment will be funded by Round 4 LRCI Grant Funding and reserves.

As part of the Old School Refurbishment, Council are looking to update the front lawn and are calling for public comment on the proposed design.

The proposed design includes a 'boomerang' seating area with a locally produced sundial. The footpaths will be updated to match the Vincent Street footpath concrete. Council will keep the water fountain, wishing well, memorial seat and Manchurian Pear trees. A larger plan can be found in the Shire Admin window and a colour copy on the Shire website. Please provide your comments in writing by 31 January 2024.





SHIRE OF BEVERLEY LOCAL PLANNING POLICY – BEVERLEY AIRFIELD PRECINCT

Pursuant to Clause 4(4) of Schedule 2, Part 2, Division 2 of the *Planning and Development (Local Planning Schemes) Regulations 2015*, notice is hereby given that Council, at its meeting of 31 October 2023 resolved to proceed with a Local Planning Policy – Beverley Airfield Precinct.

The objectives of the Local Planning Policy – Beverley Airfield Precinct are as follows:

- The Beverley Airfield Precinct Local Planning Policy aims to set the strategic framework for future spatial development of land uses within the Beverley Airfield Precinct;
- To provide for orderly and proper development within the Beverley Airfield Precinct;
- To provide guidance and development provisions for applicants seeking to construct aviation related infrastructure like hangars, etc;
- To provide guidance to Council and Council's officers when considering applications made under this policy.

A copy of the policy can be obtained during normal business hours at the Shire Offices, 136 Vincent Street, Beverley.

Stephen Gollan
Chief Executive Officer



BEVERLEY FARM SERVICES

Geoff & Jenny wish all their clients a Safe & Happy Christmas.
May the New Year be the best for you and yours.

Thanks for your Patronage in 2023.

We look forward to being of service to you in 2024.

May the Harvest be plentiful with lots of grain in

If you are travelling over the Festive Season, drive carefully & Stay safe.

We want to see you back in 24.

SENIORS WEEK 2023 - GOLDEN GROOVE NIGHT

This month we received grant funding from COTA - For Older Australians, Department of Communities, and Lotterywest Community Grants to hold a Seniors Week Event for 2023!

We put on a Seniors Week Golden Groove Night that was held on 15 November 2023, at the Beverley Golf Club. This event brought together seniors from the community for an evening filled with music, dancing, learning, and social interaction. This event would not have been possible without the help of our local community. Thank you to our amazing seniors who were in attendance. Your presence and enthusiasm filled the night with such joy, we hope you enjoyed the night!

Beverley District High School assisted us in engaging with the year 9/10 students. The involvement of the volunteer student was a great example of bridging generations and creating intergenerational connections. Thank you for being a part of this special night! Big thank you to Nat for coming along to assist our staff for the night.

The Rock and Roll/Jive Group, especially Bob and Gina, your fantastic Jive lessons kept the night interesting, and the feedback was overwhelmingly positive. Your engagement for the night was fantastic and we hope to work with you in the future. Tracey Fleay saved the day with her enthusiastic energy. Tracey's MC skills brought the night to life, getting everyone up out of their seats for a dance, we recommend Tracey Carolyn Ceremonies. Thank you to the Golf Club for allowing us to use your venue, opening the bar, and catering for our event!



WHAT WE'VE BEEN UP TO...



ART & CRAFT

As the school year comes to a close, so does our Art & Craft Club for the year. In this final session, the kids created macrame feathers. They had a great time trying different, unique patterns in each feather. A huge thank you to all of our little crafters, we loved to see all of your creativity, passion, and enthusiasm shine through! If your child is interested in this club, you can get your form from the Beverley CRC to apply for 2024.

ACCESS POINT



SERVICES AUSTRALIA

Beverley welcomed back the Services Australia Mobile Service Van. They assisted with setups, medicare, and Centrelink help. The Beverley CRC has an access point in its centre that has a phone, internet, and computer for all your My Gov needs.



GOODBYE JAIME – BABY ON BOARD!

We want to wish Jaime all the best on this exciting chapter in her life as she goes on maternity leave.

Jaime has been an invaluable part of our community, contributing her skills and dedication to making Beverley a better place for all of us. During her time at the Beverley CRC, she has completed her traineeship, taken on the Library manager role, received state library funding, run garden workshops, kid's events, craft workshops, started a junior book club, and helped to spread awareness for regional mental health. Thank you Jaime and Congratulations, we will miss you!

Alyssa will be taking over Library management. Check out our Library Facebook for updates or come in for a chat during the week.

THANK YOU GLENYS

We would like to thank Glenys for her time as chairman of the Beverley Community Resource Centre. Glenys has been part of the centre for over 14 years, volunteering her time to help the community.

Glenys has always put her best efforts forward to help the team in providing services for the community. Glenys has been a vital part of the committee creating events, working for contracts, catering for events, helping fundraise and so much more! Thank you Glenys for the many years you have put into the CRC.

Glenys will remain on the committee and she urges those looking to help the community to get involved and join the Beverley CRC committee.

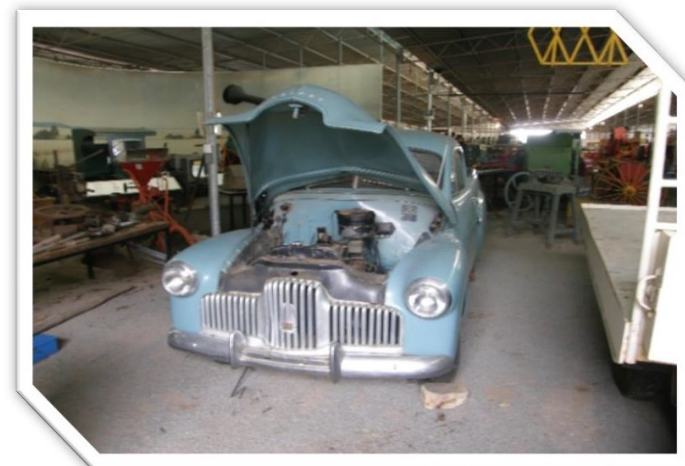
BEVERLEY AG MACHINERY MUSEUM NEWS.



With the end of another calendar year in sight and the temperature starting to rise, we had our wind up for the year on Saturday November 18 where a group of 17 enjoyed a 'Bunnings style' Bar be que with a healthy touch provided by the ladies that attended, many thanks girls, and as usual that nosey Emu 'Moo' had to check things out!

But before we got down to the social side of things the guys continued with their essential maintenance before we closed for the summer months, underinflated tyres were either pumped up or elevated from the ground.

Phill had brought his son Casey along with a view to trying to solve the poor running of the McCormick Deering W30 that he recently overhauled the Carby on, she was happy to start with young blood swinging the crank handle, and appeared to run quite well for a reasonable period of time, but embarrassingly for her she had to be towed back into the Museum building, upon inspection of the Carby Bowl and Jets there was evidence of rusty water present so the fuel tank has been drained yet again, unfortunately this often happens with fuel tanks if left for long periods with old fuel inside as condensation will often occur inside even with diesel, like everything in life, --- food, arms, legs etc use it often or it becomes stale or stiff, "use it or lose it" my late Aunty used to say!



Gerry, Eric, Ralph, and Bill were seen in discussion and working on both the Bedford truck miss fire and the Holden brakes, but with the smell of the BBQ with Bob in charge of the catering it did not take long for us all to agree that those jobs can wait until we return in February, a big thank you to John H for his purchasing effort even though he could not be there to consume.

Our only visitors on the day were a father with his toddler son who certainly enjoyed sitting on the static tractors under watchful eyes of both his dad and our volunteer group. But we did open to a special visitor attending the Men's Shed on Tuesday November 7 from The Netherlands, Paul alas was here to see his terminally ill brother Ray and given his time frame a special opening was provided for him, as can be arranged by appointment.



Our new National Trust Warden Bronwyn (and friend Frank) popped in for a quick visit but ended up staying for our BBQ, welcome Bronwyn to Avondale Farm.



Our item for the month is a Clover Harvester manufactured by Barrow Linton of WA in 1955 and kindly donated to the Ag Museum by T & H Duggan of Yerecoin, and yes that tyre needs a bit more than TLC!

As always, our group would like to thank the Shire for their support during a rather tedious year given the problems that arose, especially Ashleigh for putting up with my constant questions and Danny for his 'storm water' plumbing work, a bit more still to do, but we all look forward to a positive result, and most of all a big shout out to all those who gave up their time to help maintain, restore and 'show off' this wonderful agricultural collection.

The Museum will be officially closed until February, but 'special viewings' can be arranged for those who are visiting the area, always respecting the fire risk and harvesting taking place at Avondale Farm on Waterhatch Road Beverley where we are located.

For further information please feel free to contact me on 9646 0768 or the Beverley Shire offices on 9646 1200. Author John Alexander, Beverley Volunteer.



Beverley District High School

Independent Public School

'Working in unity to empower individuals to achieve their unique potential'

BDHS sits on the lands of our Noongar people, and we acknowledge them as the traditional custodians of the Ballardong country.

What's Coming up at Beverley DHS

Fri 1st Dec: Cadets Promotion Ceremony

Tues 5th Dec: Whole School Assembly 9am @ Undercover Area

Wed 6th Dec: Kindy & Pre-Primary Christmas Concert

Thurs 7th Dec: Junior Primary Water Fun Day

Fri 8th Dec: Year 4-6 Excursion & Cadets Excursion

Tues 12th Dec: Year 6 Celebration & Year 10 Graduation

Wed 13th Dec: Christmas Colours Day &
Whole School Presentation Night, 5:45pm @ Beverley
Platform Theater

Thurs 14th Dec: Pre-primary Assembly & students' last day of Term 4

Fri 15th Dec: Pupil Free Day



National Tree Planting Day with Wheatbelt NRM

On Wednesday the 18th of October Beverley D.H.S students from Kindy to Year 10 participated in National tree planting day. Miss Nixon worked in collaboration with Dimity Boggs from the Wheatbelt NRM who generously donated 200 native trees and shrubs for the occasion. With support from our school gardener, Kingsley Wilson, the natives that were planted on the day were chosen to encourage native wildlife into the school and when established provide an abundance of shade and colours that will brighten up the school grounds.

The students worked in groups, with youngers students working alongside our older students. This created a supportive and inclusive environment where all students were able to be involved in the tree planting. During the planting we discussed why it is so important to show respect for our school environment and what would be required for the continued care of our plants to ensure they flourish.

Since planting, each morning groups go out to water their plants. This is an activity that our high school students are really enjoying. It gives them an opportunity to appreciate the last of the cool mornings, while getting in some essential daily movement before they head back to class.

We would like to thank Dimity and the Wheatbelt NRM for making this event possible. It is greatly appreciated, and we can't wait to see all the plants in full bloom.



Miss Nixon

Successful • Supportive • Sustainable

www.beverleydhs.wa.edu.au Phone: 96462500

The Arts – Music at Beverley District High School

What a privilege it's been teaching Music again in 2024. Students from Year 1 to 6 have been continuing to build their musical repertoire and skills. We are so thankful to the P&C for their generous financial donation that has allowed the school to purchase a variety of tuned and non-tuned instruments and resources.

This year the choir performed a beautiful choral piece titled "In the Silence" for our school ANZAC Ceremony, and "Seasons" for the 150 Years of Public Education in



Beverley celebration. They composed an arrangement using xylophones and metallophones to accompany the vocals and arranged the composition together. We were very fortunate to have the assistance of Miss Kelly Fitzgerald to choreograph "Ocean Eyes" which was performed at the 150 Years of Public Education in Beverley event and The Beverley Show.

Classes have taken the opportunity to include a musical aspect in their assembly items. It has been fun using some of our lesson time to work on these. The Year 1/2 class performed a thunderstorm soundscape inspired by a story about a big rain after a period of drought on a farm. The Year 2/3 class performed an arrangement that they wrote and composed inspired by the story "Tiddalick" and most recently, the Year 4



class created an original arrangement inspired by their learning around the Rikali. We had a wonderful incursion by MusicViva called "Lost Histories" in Term 3. Students learnt about using song writing to tell, reflect and preserve stories from the past. This tied in very nicely with creating a time capsule for our 150 Year Celebrations.

There is still plenty to come this term as classes work on their final compositions of the year and the choir are rehearsing for their performance at Presentation Night along with our instrumental students.

Thank you to the Beverley community for continuing to support education of The Arts and Music, at Beverley DHS. Mrs Melissa Blechynden

Successful • Supportive • Sustainable

www.beverleydhs.wa.edu.au Phone: 96462500

KINDY / PRE-PRIMARY DINOSAUR DIG & COMMUNITY GARDEN EXCURSION



The Kindy and Pre-Primary students had a blast being a paleontologist for a day during our Dino Dig Excursion. First, we went hunting for some bones hidden in our playground. When we found a bone, we carefully placed a flag to show where it was found and went over to the “Dino Lab” to document our findings. Naming, measuring, and taking a picture of the bone.

Once we had finished our dig, we embarked on an adventure to the Beverley Community Garden for some more Dino fun, a picnic lunch and to explore the wonderful garden! We also learnt how to carefully reveal a dinosaur fossil using special paleontologist tools.

The Kindy and Pre-Primary classes would like to say a huge thank you to the Community Garden for allowing us to visit your wonderful garden, our bus driver Max, and our special parent helpers for all your help and coming along on our adventure.





***On behalf of the staff at
Beverly DHS we wish our
students, parents/carers,
and the local community
a very Merry Christmas
and a safe and happy
New Year.***

Successful • Supportive • Sustainable



www.beverleydhs.wa.edu.au Phone: 96462500



**Don't forget
to follow us
on Facebook!**



A Beverley Christmas Tradition

Beverley Times: Friday 10 December 1954

Friday 10 January 1958

Friday 18 December 1959

FATHER CHRISTMAS

A few years ago Father Christmas made a Xmas morning call on local residents regaling the kiddies with packets of sweets and generally making himself popular with all. Unfortunately the pleasant custom was abandoned.

This year we are advised that the benevolent old figure will again be seen on Xmas morning, the members of the Volunteer Fire Brigade having decided to provide the sweets for the occasion. He will drive through the streets of the town during the morning on the 25th December and all children will have the opportunity of seeing him and sampling his wares.

The Fire Brigade members are to be congratulated on the happy gesture.

IN APPRECIATION

(To the Editor)

Sir—

Could you spare space in your valuable paper to pay tribute to the very fine gesture of the Beverley Fire Brigade, also Mr Ford and sons for the time they give on Christmas morning to deliver bags of sweets to all the children in the town.

Next to Father Christmas and their stockings, the above event is eagerly awaited by all the girls and boys in the town.

We would like to tender our sincere thanks to them for giving up their time each Christmas morning to this very fine effort.

—From an appreciative family.

Christmas Gesture

The Beverley Volunteer Fire Brigade has again been in touch with Father Xmas and will act as the revered gentleman's host when he visits the town on Christmas morning.

Members of the Brigade will escort him on a tour of the town area during which he will distribute sweets to the children and will call at the Beverley Hospital.

They will travel on the Brigade's fire tender and the bush fire unit and a commentator will extend greetings to residents en route.

The seasonal gesture is a happy one on the Brigade's part and has been a popular Xmas fixture for some years past.



Father Christmas with the Fire Brigade outside Beverley Hospital.

Can anyone name these men & guess what year? Contact bhsdeadfinish@gmail.com

December 2023

All the Christmas trappings



European wasps feeding from raspberry cake (© Adobe stock) and European wasp surveillance trap hung in a tree.

The 2023-24 season has started!

In time for Christmas, a 3000+ trap array has been set across Perth and regional sites in WA. Their purpose? To detect the invasive European wasp (*Vespula germanica*); one of the world's worst insect pests.

These gluttonous wasps swarm picnics, parties, cafés, and breweries, feeding on all things; drinks, sweets, and savories. Watch them close enough and you'll see their jaws skilfully carve a piece from your meal and take it to go. This behaviour makes them unique amongst wasp species and a social nuisance and safety concern.

European wasps also forage on fruit crops, impacting home gardeners and commercial producers, and their predation of insects can impact local biodiversity and beehives. When it comes to destructive pests, they take the cake.

The Department-lead European wasp surveillance and eradication program, has to date, prevented the permanent establishment of this species. However, every year fertilised queens hitchhike into WA on vehicles or in freight and cargo from interstate. If undetected, they will leave their mode of transport and make a nest, which is predominantly underground.

Manually searching for a nest, is like looking for a needle in a haystack. The traps help us locate where in this haystack we need to look.

The traps are simple, but cleverly designed. Composed of a clear plastic, lidded jar, wire hook, a yellow label, and four specially designed yellow cones. A trap typically adorns a tree, and the decorative yellow appeals to the wasp, drawing them to the cones. The cones funnel the wasp inside and make it difficult to escape.

Capitalising on the wasps' unique attraction to protein, present inside the trap is a small cube of raw fish. It's this fish that lures the wasp to the trap. If a trap doesn't contain the fish, it's just a plastic ornament.

Traps are strategically placed in the highest risk areas of the state by surveillance staff or hung in home gardens, parks or schools by community or government participants of the 'Adopt-a-trap' program. If diligently lured with fish (fortnightly) and checked for wasps, we'll detect them, find them, and eradicate them.

For more information about the eradication program, how to identify European wasps, or to adopt your own surveillance trap, see agric.wa.gov.au/wasps or contact our Pest and Disease Information Service.



Report your observations

MyPestGuide® Reporter via app or online mypestguide.agric.wa.gov.au

Pest and Disease Information Service (08) 9368 3080 | padis@dpird.wa.gov.au

WARRIOR WELLBEING ARTICLE



The Importance of Fathers

BY THE REGIONAL MEN'S HEALTH INITIATIVE
December 2023

Our team at Regional Men's Health talk to a lot of blokes, the other important side to this is we also do a lot of listening. Comments that often come up, especially from men of the older generation is *I wish I had spent more time with my kids, or I spent my life busting my guts working and missed out on a lot of the little things.*

Life can sometimes be a double-edged sword and I personally have the utmost respect for men who saw their primary role as the breadwinner and gave precedence to their work, with the best interest of their family in mind. The downside to this, of course, was that these men were quite often too busy with work, or away from the family, to be able to commit time at home to do some of the little things that are now considered commonplace.

My partner did an amazing job giving birth to all three of our children at home (under the supervision of an experienced midwife) and I was actively encouraged to be involved through all stages of the pregnancy and birthing process. My experience, of course, is vastly different to that of men from my grandfather's era, who were told by the midwife *well you have done your job, we'll let you know when we need you!*



In modern society the family structure varies and there are no set rules on who does what. Women have historically been considered the carers and nurturers, but they may also have careers. The question I have is *are we as open and accepting of men who show a nurturing and caring side as well as a commitment to his working and professional career?* Is this balance possible?

Spending time with the kids is a priority for many blokes and I believe some of the most enjoyable and rewarding times come from being in their company. Don't get me wrong, we will all have times when we're challenged, tested (usually our patience) and sometimes even question our ability as a father, this is normal. In addition to this we need to be aware of and manage our work, spend time with our partner and make time to explore our own passions and interests (self-care).

A few tips for father and father/mentor figures out there:

- Don't be afraid of the everyday tasks when our child is born; changing nappies, bathing, feeding, they're all important bonding opportunities;
- As our kids grow get to know them and take an interest in their passions, interests, hopes, dreams and schooling;
- Talk to our kids, ask them how their day was, tell them about our day;
- Reading is one of the simplest beneficial things we can do with them;
- There is a saying if we spent twice as much time and half the amount of money on our children we and they would be better off. Keep it simple, time and presence are the most precious gift.

To those men out there who may carry feelings of regret, guilt or loss about what they missed out on with their children, don't forget that any guy can be a Dad, but it takes someone special to be a Father. Even if our children are now adults don't forget every child, no matter what their age, seeks the approval of their father. Tell our kids today that we're proud of them and we love them.



@RMHI_4blokes



Working with Warriors Podcast

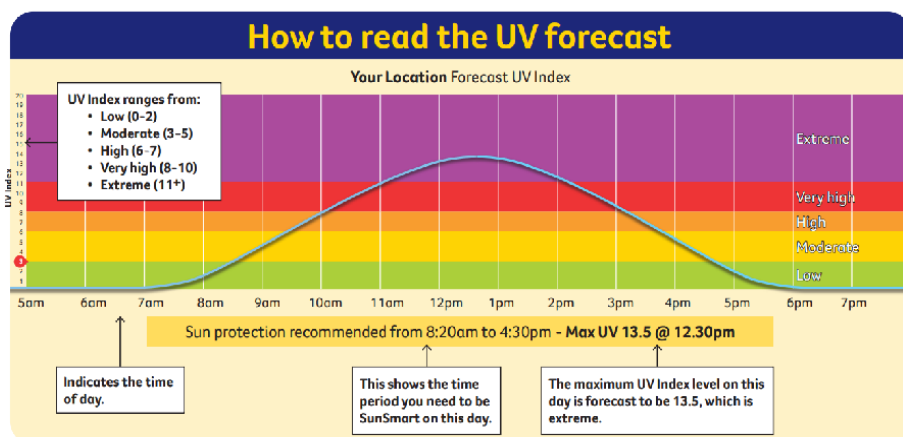


regionalmenshealth.com.au



How to be SunSmart

Australia is the skin cancer capital of the world. Two in three Australians will develop skin cancer in their lifetime, and every year around 2,000 people die from this disease. The good news is that skin cancer is largely preventable by minimising exposure to ultraviolet (UV) radiation from the sun. Being SunSmart is a simple and effective way to reduce your risk of developing skin cancer.



There's more to sun protection than sunscreen. Protect yourself in five ways:

- Slip** on sun protective clothing
- Slop** on SPF 30 (or higher) sunscreen
- Slap** on a broad-brimmed hat
- Seek** shade
- Slide** on wrap-around sunglasses

Find Skin Cancer Early

Common skin cancer symptoms:

- A new spot or mole on your skin that is red, pale or pearly in colour
- A spot that is different from other spots on your skin
- Any crusty or non-healing sores
- Any spots, freckles or any moles changing in size (width), thickness (height), colour, or shape

Get to know your skin and what's normal for you, particularly if you're over 40 years of age. If you notice any of these symptoms or any other unusual changes tell your doctor without delay.

If it's skin cancer, the earlier it's found, the greater the chance of successful treatment.

Visit <https://www.findcancerearly.com.au/cancer-symptoms/skin-cancer/> for more information.

When UV is 3 or above be SunSmart.

But how do you know when?

Use the free SunSmart Global UV App!

The sun's ultraviolet (UV) radiation is the major cause of skin cancer. UV cannot be seen or felt and can damage your skin on cool or cloudy days. The sun protection times tell you when UV is forecast to reach 3 and above, **that's the time to be SunSmart.**



Scan to download the SunSmart app



Download the app or go to myUV.com.au

BEVERLEY HISTORICAL SOCIETY



Beverley Historical Society
Dead Finish Museum
bhdeadfinish@gmail.com



As I write this it is a very hot week, so hope everyone was able to stay cool and safe.

By the time that the Blarney is printed we would have had our Christmas lunch at the Bedford Arms Hotel in Brookton and our last bus trip for the year to most of the Churches in the district. Looking forward to this.

Sunday the 26th of November is the last day for 2023 that the Museum will be opened. As volunteers we will be working behind the scenes over summer ready for 2024. Once again without volunteers we would not have a Museum so THANK YOU to all the helpers.

The next meeting and last for the year is Monday 4th December at 9a.m. for cover up and 10.30a.m. for general meeting.

The Museum will reopen on Sunday 9th March 2024 at 11a.m.

MERRY CHRISTMAS TO YOU ALL, ENJOY AND STAY SAFE.



Staff at the **Beverley District Health Service** would like to wish you all a very happy and blessed Christmas and a prosperous New Year. May your days be filled with joy and peace.



Merry Christmas from our Hospital family to yours.



*Thank
you*

Barry, Lesley, Neil & family wish
to thank friends & family for their
cards, phone calls and support
following the loss of Kathleen

Always in our hearts

*thank
you*

THE WOODS FAMILY would like
to thank you everyone who
attended the lighting fire on the
29th of November. What a
fantastic community we have.

BEVERLEY C.W.A

Well, it's that time of year again, rushing around to get things done before school finishes but also before the shops get too busy, making sure you have everything but knowing that there is something you have forgotten but can't think what it is. And for the family gatherings, well that is another mission in itself, making sure you have room for everyone, enough food. By the time the day is actually here, you are too tired, so you just flop down into the closest chair and enjoy the day and company and worry about everything the next day.

Well to help you out at this busy time, the ladies are once again holding their **Amazing Christmas Raffle and Cake stall** on the **8th and 9th December**. With so many wonderful prizes to be won, you may be lucky enough to win food hamper, entertainment hamper and many other prizes that you may just be able to use as gifts or just keep for yourself because you deserve it. You also have the chance of winning a day out for 2 adults and 2 kids, by the extremely kind donation by Caversham Wildlife Park this year. So, we may just have something for everyone, so come on down and grab your tickets.

If you can't make Friday, well come on down Saturday for your tickets and have the chance of buying some of the delicious home-made goodies that the ladies are busy making for their cake stall. With so many delicious choices in front of you, I am sure you will have a hard time in deciding what to buy. Great to put in the cupboard for morning tea the following week.

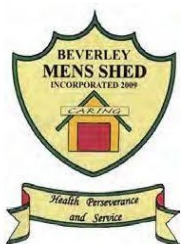
And speaking of that morning tea, the Ladies will have no time to rest as they will be holding the **Christmas Community Morning Tea on the 13th of December** at the C.W.A rooms at **9.30am**. So, come along for a morning of festive fun and the last morning tea of the year. A great opportunity to catch up, free cuppa and something to eat without the cleanup after. A chance to have a rest and fun before getting back into that line at the supermarket that we are all dreading. (I know I am).

Now that we have had the raffle, cake stall and the community morning tea, the ladies will be holding their final meeting of the year on 20th December, starting at 9.30am. Then once all the formalities are dealt with, the ladies will finally sit down and enjoy their Christmas lunch, looking back at the year and thankful for all the support that the community of Beverley have shown to the C.W.A.

The Ladies would like to thank not only the people in the community that support us in buying tickets and the many donations, but also the businesses that have donated or helped us in our fundraising activities. So, to the Beverley I.G.A & Liquor, Beverley Bakehouse we thank you for all that you have done for us, and we wish you and all your staff a very Merry Christmas. I would also like to thank the Caversham Wildlife Park for the extremely generous donation this year and we send our gratitude to you and all your staff and hope that you all have a Merry Christmas.

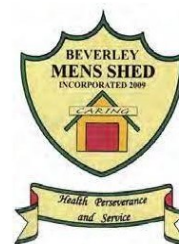
So, with that, I will sign off for another year and thank you all for taking the time to read the C.W.A notes (I know I ramble sometimes) and for the support that you have shown to the ladies. Until next year, **wishing you all a very Merry Christmas and Happy New Year, Stay Safe, Stay Cool and most of all, ENJOY YOURSELF!**





Beverley Men's Shed

146 Vincent Street Beverley Western Australia 6304



Halloween and Men's Shed are not often used in the same conversation, but when a request was received for our group to cater for the local children at a Halloween event (naturally held on October 31) several of our members were happy to assist. We had allowed for around 50 to attend but it was soon obvious that the sausages and rolls would need to be cut in half but given the ages of the participants less consumption each was not an issue. The kids appeared to have a great time and our guys were left with a good impression from the excellent manners and respect shown by all, a 'feather in the cap' for the parents of the district.



After the recent high winds, inevitable tree branches have descended to the ground, and with requests flooding in for assistance our wood team have been out on the job cutting up and clearing away as requested with the proceeds from our efforts being stockpiled for sale next year once matured.

Time passes us by so quickly these days, and with age many are often dealt inoperable health problems, some of our members (past and present) have suffered with such issues and as a Men's Shed we will try and support them through such illnesses, especially when their families may not live locally. Ray is one person with all his family living overseas, now Ray is a member who would always put his hand up and offered to help where he could and so it was no surprise to us upon knowledge of his terminal illness that many members of his family (such was their upbringing) have come over from Europe (on a rotational basis) to be closer to him. Naturally our members have assisted them where we can, especially Bruce who has opened his home to Ray's brother Paul for accommodation, also showing other family members around.

On November 7 Paul entertained us with a very informative slide show on the subject of Roman Aqueducts in Europe, one example being the city of Rome with a population of around a million at the time had 30 such supply lines, all based on gravity supplying water for gardens and fountains as well as domestic use, not sure that the use of lead piping was such a good idea mind, obviously there were no Bunnings stores with plastic pipes around then! as he pointed out to us in many parts of Europe there is always a decent supply of water that they take for granted unlike in some parts of our dry continent.

Bob's final raffle for the year was held over two Saturdays with the prizes drawn on November 11, a big thank you to all the community who support us and our chosen charity The Royal Flying Doctors Service, the donators of prizes, the support and assistance of the CRC, the Shire for the use of the Lion's Kiosk and most of all the guys (and girls) who hang around trying to encourage ticket sales.

Winners of the November raffle are----

First Prize was a combined Bunnings voucher of \$100 and a T Bone Meat voucher for \$50 which went to Heath, with the presentation held at the Men's Shed on Tuesday November 14.

Second Prize of a \$70 T bone meat voucher went to Marie, who requested it be donated on, our committee decided upon a local family in need, thank you for your kindness Marie.



Third Prize went to Dell with another T Bone meat voucher this time worth \$45.

And Niomi's ticket was drawn for our mystery prize of a 'Sandwich maker'.

Congratulations to all who won, a big thank you to Peter at T Bone Butchery here in town and to Debbie at Northam Bunnings for their valued contributions.

From 'Bob's raffles' held over the past eight months the Beverley Men's Shed have proudly presented the RFDS with \$2025, again a big shout out to our community for their support. Watch your local Beverley Bulletin for future fund-raising campaigns.

If you would like to know more about our group, maybe become involved as a member, we are not just inviting retirees, 18 years plus, male and respect for your fellow members are the only requirements plus a couple of gold coins each visit, feel free to contact Secretary Bob on 0429 441 253 for further details.



Beverley Hospital Auxiliary Inc.

Beverley Op Shop

Over the next few weeks there are some renovations happening at our little shop we are still open, please also check out the Lesser Hall as well as the shop as we have moved some things in there.

Please bare with us as we do the best we can to accommodate everyone and the reno's.

The op shop's last day of trade for 2023 will be Friday Dec 15th. If you are looking for a bargain, come through the Green Door on Fridays from 11am to 2.30pm or the first Saturday of the month from 9am to 12pm, to find something tantalising.

We will not be taking any donations from December 8th through to Feb 1 2024. Please note that the bins behind the op shop will not be available over our closed period, so please do not just dump items at the back of the op shop, as no one will be calling in to check during the summer months.

All proceeds go towards health & wellbeing in the Community, Hospital and Alex Miles Lodge.

If you would like to volunteer, please contact our Roster Secretary, Leita Barrett-Lennard on 0429 168 099.

The Hospital Auxiliary is coming up to our 80th Year of servicing the community and we would love to celebrate this amazing milestone. Do you have any photos or stories or know anyone who used to volunteer? If you are able to help out, please contact our Secretary, Jo Sims.



Beverley Hospital Auxiliary Inc.

Beverley Op Shop

**50% OFF
MEGA SALE!**

**50% OFF EVERYTHING
AT THE OP SHOP
UNTIL DEC 15TH**



OP SHOP

**Open Fridays
11am - 2.30pm**

**Every First Saturday
9am - 12pm**

Please read dates you have been rostered on.

December Roster

Fri 01 Leita Barrett-Lennard, Ann Jordanoff,
Amanda McLean

Sat 02 Jo Sims, Gina Adams

Fri 08 Gina Adams, Roma Ladiges, Sarah Miller

Fri 15 Sandy Shaw, Chris Mann, Sue Eramiha

***Please note: If you are unable to attend your scheduled day, please arrange your own replacement.*

Any concerns please contact Leita Barrett-Lennard 0429 168 099

**The 2024 Op Shop Roster can
be collected from the Op
Shop until December 15th.**



We attended Remembrance Service on 11th Nov at the War Memorial and placed some roses at the Service.

The year has come to an end for our Volunteers as regards to training. This year we have been very fortunate with new Volunteers, Ian, Chad, Steve & Amanda. All who have managed to attend courses throughout the year and reach the next level of their training as Emergency Medical Responders and Emergency Medical Assistants. Lionel has become a Volunteer Development Officer and Jodie is now an Emergency Medical Technician. All very technical names, but they are all very qualified to help in any situation that they are presented with. Training is a big commitment for the crews during the year, but is essential so that their qualifications are constantly current. With new members of Anne & Tarni on the Committee along with current committee, we have a great mix of dedicated volunteers who have the Sub Centre at heart.

Hopefully kitchen renovations commence early in the new year and we will have an updated work area when we need it. This has been ongoing for a few months but all seems to be falling into place at last.

We have also celebrated our end of year BBQ with Committee, Crews, Life Members and visitors from our local Emergency Services. Saturday night was well attended and from all reports everyone enjoyed the evening. The variety of salads and sweets which we all brought along were amazing as per normal. Jodie and Ian cooked the meat to perfection in the absence of Peter who was unwell and unable to attend this year.



As customary we had our local humorous awards and this year Award recipients were Beverley Ayles & Craig Spencer both Regional Staff were presented with Roo Awards, Linda received replica 'Ambulance', Lionel - 'Jocks' Award, - 'Flat Battery' Award, Jenny 'Wildlife' Award, Chad 'Sanitizer' Award. These awards are given for incidents that have



a
Jodie



occurred during the year and possibly cause the recipient some embarrassment and lots of laughs. Barry Knight has kindly made us a shield with a 'Roo' on it to place all the names of those who have had an altercation with a roo over the years. We do have a few names to place on the shield.

Santa arrived on cue to surprise a couple of young ums during the evening.



As the year comes to an end and Christmas is only a few weeks away, we wish everyone a Merry Christmas and a Happy & Safe New Year. For those travelling over the Festive Season please take care on the roads.



**101.3 FM
VOICE OF THE AVON LOCAL
RADIO PROGRAM**



SUNDAY

11.00 – 2.00 Easy Sunday with Nic
2.00 - 6.00pm The Sunday Album Show with Terry

MONDAY

6.00 – 10.00 Monday Breakfast with Bob
10.00 – 2.00 Monday with Lesley-Ann
2.00 – 4.00 Voice of the Avon Jukebox
4.00 - 7.00 101.3 FM Irish Jukebox
7.00 -10.00 Classical Sounds with Chris
10.00 – 6.00 am Voice of the Avon Jukebox

TUESDAY

6.00 – 10.00 Tuesday Breakfast with Bob
10.00 – 12.00 Country Tracks with Haydn
12.00 – 2.00 Afternoon Music with Leo
2.00 - 4.00 Rockin' on The Avon with Denni
4.50 - 7.00 Turn it up Tuesday with Michael
7.00 – 6.00 am Voice of the Avon Jukebox

WEDNESDAY

6.00 - 10.00 Breakfast with Bob
1.00 – 4.00 Concerts, Musicals & Soundtracks
4.00 - 6.00 Voice of the Avon Jukebox
6.00 - 9.00 Back to the Future with Frank
9.00 – 6.00 am Voice of the Avon Jukebox

THURSDAY

6.00 - 9.00 Breakfast with Nic
9.00 - 12.00 Sing Along Swing Along with KT
12.00 – 3.00 Kaleidoscope with Chris
3.00 – 6.00 Voice of the Avon Jukebox

FRIDAY

6.00 - 9.00 Breakfast with Nic
12.00 – 4.00 Michael's Mix Up with Michael
4.00 - 6.00 am Voice of the Avon Juke Box

SATURDAY

6.00 - 9.00 Saturday Breakfast with Frenchy
9.00 - 12.00 Spirit of Music with George
12.00 – 2.00 Happy Trails with KT
2.00 - 4.00 Saturday Mix with Graham
4.00 - 6.00 My Kind of Music with Lesley-Ann
6.00 to 6.00 am Voice of the Avon Juke Box

Phone: Studios 9641 2422
Sponsorship: 0457 590 550
E-mail: radio6ycr@hotmail.com

Facebook
Voice of the Avon 101.3 FM – 6YCR

Website
voiceoftheavon.org.au

Effective 18 September 2023
Changes may be made without notice

LOOKING TO DOWNSIZE?

Hunt Road Village is conveniently located in town.
The waitlist is often long so we recommend registering your interest.

Located on Hunt Road, all units are 1 bedroom, 1 bathroom and each has its own parking space. The conditions of rental include: applicant must be 54 years of age and over, ability to care of yourself, a bond payment equivalent to 4 weeks rent and the first rental payment is payable in advance. Rent is currently \$150 per week and is reviewed annually.



Please email
admin@beverley.wa.gov.au or call
into the Shire Office for an
Application Form and full list of
Terms and Conditions.

*Are you interested in the future planning of
Health Services in Beverley?*

DOES YOUR HEALTH MATTER?

Local Health Advisory Group

Be Involved

Collaborate with local health
services to bring about
positive change, improving
the health and wellbeing of
our community

Be Heard

Advocate for health
services issues important
to you



For more information contact:

Cr Peter Gogol

0403 822 770 or p.gogol@beverley.wa.gov.au

Mia DAVIES MLA

MEMBER FOR CENTRAL WHEATBELT



Northam Office
171 Fitzgerald Street
(PO Box 92)
Northam WA 6401
PH 08 9622 2871

Merredin Office
Old Town Hall
16 Mitchell Street
Merredin WA 6415
PH 08 9041 1702

mia.davies@mp.wa.gov.au

MiaDaviesMLA
 facebook.com/MiaDaviesMLA
 @miadaviesmla

Authorised by M Davies, Northam Boulevard Shopping Centre, Fitzgerald Street, Northam

BEVERLEY CLAY TARGET CLUB 2023 DATES



8TH JAN - 50 Double Barrel
5TH FEB - 50 Continental
5TH MAR - 100 Target
2ND APR - Shooters Choice
7TH MAY - 25 Double Barrel /25 Single Barrel
4TH JUNE - 50 Double Barrel
2ND JULY - 100 Target
6TH AUG - 50 Double Barrel
10TH SEPT - 25 Single Barrel
1ST OCT - Shooters Choice
5TH NOV - 50 Double Barrel
3RD DEC - Captains Choice

START TIMES

Practice Starts @ 9.00AM

Shooting Starts @ 10.00AM

New members are more than welcome to come along and have a go. Firearms and Ammunition will be provided for non members.

LOCATION: RIFLE CLUB, NICHOLAS ST, BEVERLEY
SECRETARY "H" - CONTACT # 0407 457 427

IRIDSWA
BEVERLEY

DANCE IS BACK!!!

Beverley Town Hall Mondays After School

3.15pm - 3.45pm Tiny Toes Ballet
3.45pm - 4.15pm Junior Ballet
4.15pm - 5pm Jazz
5pm - 5.45pm Acrobatics
5.45pm - 6.15pm Hip Hop

Classes taught by Miss Georgia McIvor!

www.ruraldanceschoolswa.com
Enrol Online Today! First Class Free!



Beverley Line Dancers

Thursday mornings in the Town Hall

9:30 – 12:00

\$5 – including refreshments



Enquires to

Jan 0429 952 177



St John Ambulance Australia is offering a new eLearning resource teaching basic first aid skills that can be used in the crucial few minutes post-accident. The online training takes 30 minutes and it is completely free. The interventions taught will create educated drivers who are ready to assist in the event of a road emergency.

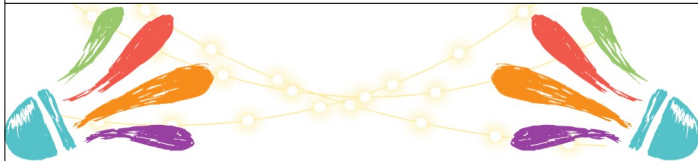
To find out more, go to
<https://clicktosave.com.au/>



BEVERLEY GARDEN & TREE SOCIETY



Meetings first Tuesday of every month - March through to December
New Members Always Welcome
For further details phone Valery
on 0427 072 114



Beverley Badminton

Notice of AGM & Windup

Wednesday, 6th December 2023
AGM & Presentation Lunch will be held at the
Greenhills Hotel @ 11am, all welcome.

We look forward to seeing all our members back
in 2024, and welcome new members

For More Information or Enquiries
Find us on Facebook
or email beverleybaddy@outlook.com
or contact Elaine
on 0408 903 478



PURSLOWE
TINETTI
FUNERALS



YOUR
Goodbye
YOUR WAY

Burial - Cremation - Country - Metro - Prepaid
Call us for a Free "Plan Your Goodbye" Booklet

Take the opportunity to join in gentle activity aimed at general fitness and falls prevention.

Stay Active

with the
Beverley Everlastings

Stay Active is a weekly one-hour keep fit session for those who find gentle aerobic, strength, balance and stretching exercise beneficial to their health.

The exercises are designed for over 50s, but younger participants are welcome. Those less mobile or those recovering from accident and illness also find the exercises useful.

Chair exercises are available and participants can opt to do all or some of these.

Stay Active

Date: Tuesdays

Time: 9:00am

Place: Beverley Recreation Centre

Cost: \$1

Come along for social-distancing fun activity. Stay Active is a volunteer community health program coordinated by the Wheatbelt Health Service



Government of Western Australia
Department of Health



CATHOLIC CHURCH

Service in Beverley
8am; every Sunday

Adoration, Rosary & Mass
4.00pm; First Friday of the month;
followed by a cuppa

at Beverley Sacred Heart Church, Lukin
St, Beverley

Beverley Quilting Group

We meet on Tuesday's at the Masonic Lodge in the back room. We start at 9.30am and finish at 2.00pm.

\$4 donation per session, and BYO lunch.

For more information
contact Jan Sherwood
on 0438 019 510



BEVERLEY LIBRARY

**Open Monday
to Friday
9.00am to 4.30pm**



LOCAL BUSINESSES



AVON VALLEY AG
LONG LIVE LOCAL

LOT 502 DE LISLE STREET, BEVERLEY

TRADING HOURS
MON - FRI 8am - 5pm

BARRY FRASER - 0427 940 827
OFFICE - 08 9646 2100



Now stocking Milwaukee Tools.



E Squire Contracting Services

Water Supply
Windmills & Accessories
Solar Pumps:
Sales, Service, Installation
Fencing & Yards
Trenching & Poly Pipe Laying

E Squire Contracting Services
Beverley and surrounding districts

Phone: 9646 0800

Errol Squire 0438 682 687

Painter Decorators

All repairs & painting

Lyndon & Cameron Grover

0427 661 302

lydongrover@bigpond.com

Reg: 3941



- Plastering
- Pressure Cleaning Roof
- Gyprock
- Spray Painting
- Repairs
- Gutter Replacing



C & B TRANSPORT

DELIVERING GENERAL FREIGHT AND
CHILLER GOODS

3 DAYS PER WEEK OR AS REQUIRED

TO

**BEVERLEY, BROOKTON,
PINGELLY**

FROM

**PERTH DEPOT CANNINGVALE
MARKETS**

PLEASE CONTACT PAUL BALDWIN

ON

0417 953 968 or 08 9646 0461

BIG ENOUGH TO DO THE JOB SMALL ENOUGH TO
CARE

WOOL BUYER / BROKER

Broking Clips

Buyer of oddments

Pick up and same
day payment

MIKE FAIRCLOUGH

0429 635 999

Established in 1997, proudly servicing Beverley and surrounding areas



**BEVERLEY GAS + PLUMBING
SERVICES**

PL 9723
GF 017690
BFL 3108

**Beverley Gas and Plumbing is your local plumber
for all your plumbing and gas needs.**

- Renovations
- Septic and leach drains
- Gas installs and maintenance
- Hot Water
- Blocked drains
- Dripping taps
- Backflow prevention
- Sewerage conversion

Kodie Fleay
Phone 0418 929 141
Email beverleygandp@gmail.com

Make the Best In-Season Nutrient Decisions



Using nutrient Fuel Gauges and inSITE Plant Analysis, your local Area Manager can help you make the best in-season nutrient decisions.

Speak with David today!



David Hull, Area Manager - Narrogin

Mobile: 0477 923 684

Email: dhull@summitfertz.com.au



Earthmoving Contractor

Dam Cleaning

Dam Enlargements

Dam Sinking

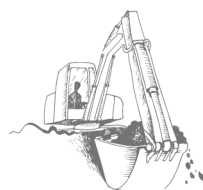
Dozer & Excavator Hire

Fence Lines

Gravel Stockpiling

Shed Sites

Contact Ray:
0428 936 621



0408 755 466

Supply and Installation of all types of air-conditioning and refrigeration systems. Split, Ducted, Evaporative, service and repair to domestic, industrial and commercial.

Throughout the Avon Valley and Wheatbelt, no job too far, call Mark for a free quote

Email valleyaircon@outlook.com

ARC Lic AU42118

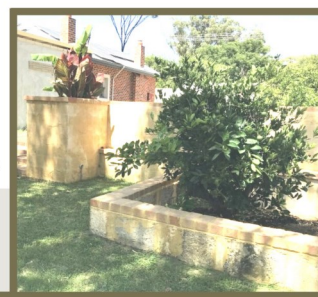
BEVERLEY DESIGN

Renovations,
Alterations, BBQ's,
Brick Fences, Steps,
Retaining Walls,
Brick paving laid in mortar

Phone

Michael 0407 645 001

Barry 0417 181 724



Why sell with me?



1. Local to the shire of Beverley.
2. Over 14 years experience in Residential sales, hobby farms and property management.
3. FREE standard advertising on all properties.

If you would like to find out what your property could be worth in the current market please give me a call.

All it will cost you is a cuppa!



Maureen Reid
0449 153 722
maureen@atrealty.com.au



BEVERLEY
PHYSIOTHERAPY

Kahlia Ferguson Physiotherapist

Located in the Cornerstone Building.
Sports injuries, osteoarthritis, muscle strains, neck pain, back pain, headaches, post-op management

Enquiries and Bookings:

Phone 0437 709 577

Email: admin@beverleyphysio.com.au

Online Bookings:

www.beverleyphysio.com.au

BEVERLEY EARTHMOVING

LOCAL BUSINESS, SERVICING BEVERLEY FOR OVER 15 YEARS



GRADER - BACKHOE - BOBCAT TIP TRUCK

ROAD BUILDING AND MAINTENANCE

HOUSE PADS - SEPTIC SYSTEMS

SAND, GRAVEL, BLUE METAL

FIRE BREAKS - CONTOUR BANKS - ROADED CATCHMENTS

CALL- DAN WILKINSON

0417 093 090

EMAIL- DAN.ZOE@PM.ME

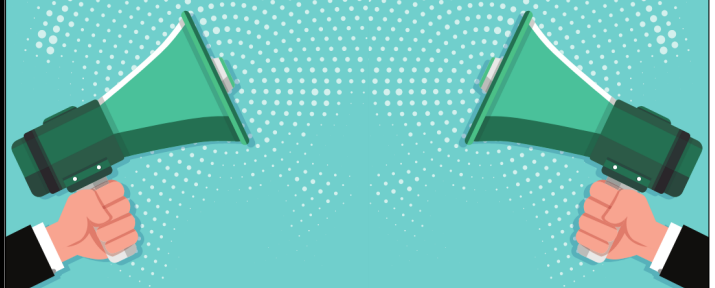
WWW.FACEBOOK.COM/BEVERLEYEARTHMOVING/

ADVERTISE YOUR BUSINESS HERE

There are many advertising options for
your business in the Blarney.

blarney@beverley.wa.gov.au

Enquiries can be made to the Shire
Office or to the above email address



AVON GLAZING

Everything Glass...

Windows Splash Backs
Mirrors & More

Ron Robinson
0427 185 291



WESTDALE TIMBER

T/A R. L. & T. L. TAMBLYN ABN. 106 854 06

TREE TRUNKS REMOVED TIMBER SLAB SALES

PLEASE DON'T BURN UP GOOD USEABLE TREE TRUNKS

SAVE THEM FROM THE CROPPING CLEAN UP FIRE

DON'T LET THEM ROT AWAY TO WASTE

I WILL CHAINSAW THE TRUNK OUT OF THE TREES

LEAVING THE BRANCHES FOR YOU TO PUSH ONTO STUMPS
TO EASILY BURN UP

300MM AND LARGER TREE TRUNKS

WANTED DEAD OR ALIVE BY THE TRUCKLOADS

STANDING DEAD OR STORM WINDFALL TREES REMOVED

MARRI/RED GUMS, JARRAH, WANDOO/WHITE GUMS,
SHEOAK, TUART, BLACK BUTT AND PINES

Save yourself time and effort.

PLEASE CALL RICKY 0419 903 829

BROOKTON PLUMBING

ABN: 37 675 595 336

FOR ALL YOUR
PLUMBING MAINTENANCE
AND GAS FITTING NEEDS

***PLUS SEPTIC WASTE
REMOVAL**

PHONE:
SEAN 0413 480 543 or
NATASHA 0422 013 889

PL: 7130 GF: 006947 SWR: T235

BEVERLEY CHIROPRACTIC CENTRE Dr Liam Welfar

CORNERSTONE BUILDING

141 Vincent St, Beverley

(Entrance off Dawson St)

08 9646 0523

Back Pain? Neck Pain? Headaches?
Sporting Injuries? Postural Problems?
Call us today to find out how I can help.

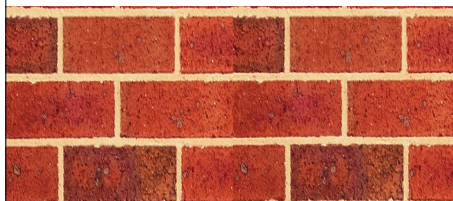
Hicaps facility available onsite

DJ YATES Authentic Heritage Restoration

BRICK AND STONEMASONRY
RESTORATION
AUTHENTIC REPOINTING OF
MORTAR, RISING
DAMP RECTIFIED
PROPERTY
MAINTENANCE



PHONE DAVE
0419 041 542



Unique Strokes W.A. Painting & Decorating

Reg. No. 4236

ROB BAIN

QUALIFIED LOCAL TRADESMEN

For Guaranteed Traditional
Workmanship & Prompt Free Quotes
Phone: 08 9647 2102
Mobile: 0418 904 013



Jennifer Murray

Avon Valley Marriage and
Funeral Celebrant

www.jrceremonies.com

0488 333 006

jennifer.r.ceremonies@gmail.com



JENNIFER RAE
CEREMONIES

York Chiropractic

MacLachlan Centre – 4 Trews Road



Clinic available every week

9641 1500

Dr Alexandra (Sacha) Browne

B.Sc (Chiropractic) B.Chiropractic



Also available in Cunderdin and Merredin

ChemDry® Drier. Cleaner. Healthier.™ Beta Finish



Superior carpet
& upholstery
cleaning

Freecall 1800 017087

bettafinish@wn.com.au

Fax 08 96225473

Countryside Memorials

Cast Stone

Granite

Marble

Plaques

Added Inscriptions

All Repairs and Restorations



25 YEARS PROFESSIONAL EXPERIENCE

FREE DESIGN AND QUOTE

Servicing All W.A. Country Areas

9696 0466

OXTER SERVICES

www.oxter.com.au

oxter@westnet.com.au

NEED PRACTICAL TRADE ASSISTANCE?

D & M Services

(Design and Manufacturing Services)

Solving a range of practical needs and problems..

Specialising in:

- ✓ Kitchen renovations
- ✓ Shop fitting and modifications
- ✓ Furniture restoration
- ✓ General carpentry
- ✓ Alterations & installations
- ✓ Metal based fabrication
- ✓ Motorhome and Caravan fitouts
- ✓ Pergolas, Decks & Gazebos
- ✓ Designing and planning

Guy Slingerland

0403602335



northam optical



- Bulk billing to Medicare
- HBF & DVA Provider
- Competitive prices
- Great range of frames & sunglasses
- Locally owned and operated

www.northamoptical.com.au

138 Fitzgerald St Northam WA P 9621 1131

E northam.optical@yahoo.com.au

Vines Aesthetic Clinic

Rejuvenating and
Invigorating



Put the glow back in your skin
juvenating and invigorating

- ✓ Dermabrasion Therapy
- ✓ Led Therapy
- ✓ Injectables
- ✓ Derma Pen
- ✓ PRP



VinesAestheticClinic

Dawson's Concrete & Reinforcing

"Your Local Beverley Concreter"

- Concrete Formwork & Steel Fixing
- Driveways, Shed floors, Maintenance pits, Silo pads, Super sheds, House pads
- Fully mobile service
- Over 30 Years Experience
- 7 Days A Week
- Professional, Reliable Service

Phone for a Free Quote

SANDY DAWSON

Mobile: 0417 375 221

Email: pameladawson@bigpond.com

FB: www.facebook.com/dawsonsconcrete

**SHAZMAC
PLUMBING**

PROUD TO BE YOUR LOCAL PLUMBER

Plumbing Licence: PL 5829 Gas Fitter Licence: GF 7422 RHL: L100443
ABN: 18 531 685 326

For all your plumbing & gas fitting needs

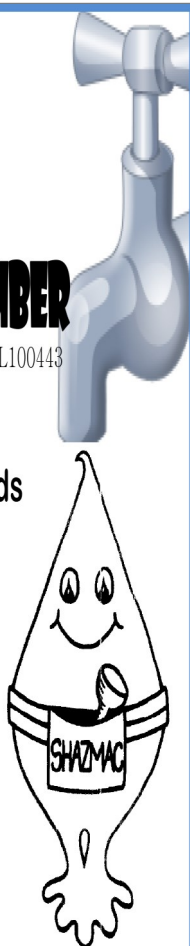
Phone 0408 189 987

PO BOX 116

BEVERLEY WA 6304

shazmac1@westnet.com.au

NO job is too big or too small.



TAX RETURNS

**FORTIZ BUSINESS
SOLUTIONS**

**(Registered Tax Agent
&
Certified Public Accountant)**

**Tax Returns for all entities
Business Consulting
Software solutions / setup
Bookkeeping / Accounting**

OFFICE HOURS:

FRIDAY 9.00am – 4.30pm

101 VINCENT ST (Bankhouse) BEVERLEY

Please phone for an appointment

9646 0282

**KARRADALE LIVESTOCK TRANSPORT
YORK LIVESTOCK TRANSPORT**
ABN 64 054 007 721

We service Beverley, Brookton, York
& surrounding districts

Available to transport Sheep & Cattle

No job too big or small

Support the local communities

Member of ALRTA

If you need stock moved, Peter would love to
hear from you - 0428 481 281



BEVERLEY
Transport

Your local carrier for over 30 years.

**GRAIN, FERTILISER, LIME, HAY,
WOOL AND SIDE TIPPERS
AVAILABLE**

Garry & Sarah Miller

0428 464 066

admin@beverleytransport.com.au

Primary Health Services

Available to the community of Beverley

Child Health Nurse – 9690 1320

To make an appointment, Northam Hospital Admin Staff will assist you in setting an appointment time, which will be, on most occasions, a Monday

Northam also provide Child Development Services via referral – 9690 1320

School Health – 9641 0200

Dietetics – 9690 1320

Occupational Therapy – 0429 466 224

Physiotherapy – a doctors referral is required – please send all referrals to PO Box 312 Northam 6401. Clients will be acknowledged with a letter informing them of the approximate wait time.

Podiatry – email: admin@comopodiatry.com.au or call 9450 6200. Attendance is generally a Monday.

If eligible for an EPC Plan which is through referral from a Doctor, Como Podiatry will bulk bill Medicare for a max of 5 sessions per year. Non referral clients are may be eligible to claim Private Health for the \$60 sessions.

A Doctor's referrals are generally faxed to the service provider, Como Podiatry, who contact the patient by phone and make an appointment.

Social Work – Phone 9690 1320

Speech Pathology – 9690 1320

These services are provided by WA Country Health Service and are free of charge. If you have any concerns about your own health or your child's health and development, please phone the relevant health professional to discuss your concerns.

Alternatively, you can speak to the Child Health or School Health Nurse, or your GP, to discuss your concerns and to determine the most appropriate referral.

Avon & Central Primary Health Promoting Healthy Lifestyles

BEVERLEY STORAGE & TOWING

HUGE NEW PREMISES LOCKED & FENCED

\$100 A MONTH CARS, CARAVANS, BOATS,
MOTORHOMES WE HAVE ALL OF YOUR
STORAGE NEEDS COVERED.

TILT TRAY WITH WINCH CAR TRAILER
PICK UP AND DELIVERY - ALL AREAS

BRETT HIGGINS

0400 048 976

beverleystorage@hotmail.com

www.facebook.com/BeverleyStorage



DRUG & ALCOHOL COUNSELLING

The Wheatbelt Community Drug
Service Team will be visiting Beverley
Hospital fortnightly.
Appointments phone
Jackie Darby 96211 055.

Mulesing Contractor



For all your
Mulesing Requirements
Beverley, York
and surrounding areas

Contact Terry Slade
0427 635 065

ROYAL ANTEDILUVIAN ORDER OF BUFFALOES



GLE (Inc.)
QUAIRADING BEVERLEY No.
163

**We meet the first Wednesday of
every month at the Masonic
Lodge, Hunt Road, Beverley**

**The objects of our order are
Philanthropy and Good Fellowship**

**For more information contact
Tom 0419 945 240**

BANJUP FIREARMS

D/L 10026844

Happy to help with all things firearms.
Travelling between Perth and Beverley weekly.

Can assist with...

- Transport
- Storage
- Buying and/or Selling
- Unwanted Firearms
- Serviceability Certificates
- Safety Awareness Tests
- Deceased Estates
- Ammunition



Call Scott on
0433 803 304

OPTOMETRIST
AVAILABLE ON
TUESDAY'S
in Beverley



Peter Tidman OPTOMETRIST

If you are over 65 years of age,
you are entitled to a yearly
bulk billed check-up.

We encourage you to keep
on top of your eye health.

You can find us at the
RSL Hall, 50 Forrest Street, Beverley.

Appointment bookings
Please call Beverley CRC 9646 1600.

SARAH SOMERS LAWYER

SERVING THE WHEATBELT COMMUNITY

Family Law - Divorce - Separation

Property Settlement - Restraining Orders

Defacto Relationships

Children's Issues - Contact/Residence

Competitive hourly rates

Reduced fee for Initial Consultation

📍 85 Fitzgerald Street, Northam WA 6401

☎ 0427 725 501

✉ sarahsomers@inet.net.au



Karl, Hollie, Phoebe, Zac and Staff wish all our
customers a very

Merry Christmas & Happy New Year



BEVERLEY ELECTRICAL SERVICES

We would like to thank all our customers for their
support and patronage throughout the year.

Beverley Electrical Services is completely booked
out for the remainder of the year and will only be
able to undertake emergency jobs (no power) for
existing clients. Thank you for your understanding.

9646 1222

sales@beverleyelectrical.com.au **EC 006578**

SHEDS FOR ALL PURPOSES



Offering robust protection from
the elements, our Australian
standard modular building systems
are engineered for strength in all
conditions.

Designed for the **agricultural and
hay markets**, with the flexibility to
suit many other applications, our **shed
range** will safeguard your valuable
farm machinery and business assets.

- Supply only or supply and
install options available
- Western Australian owned
and operated business
- Locally manufactured products
and components
- Standard and customised designs
- Fully bolted framing system
- Project management services
including council approvals
- Registered builder with an
extensive farming background



With an extendable modular design including optional bay
and end wall additions plus self-build to fully installed
options, there's a customisable system to suit your needs
now and for years to come.

www.phoenixbuildingsystems.com.au

☎ **0427 424 672**

✉ ryan@phoenixbuildingsystems.com.au



AVON TERRACE DENTAL | YORK
your smile. our passion.

Now Open 9am to 5pm Monday to Friday!

Our Services:

- Preventative and General Dentistry
- Children's Dentistry
- Anxiety Management
- Cosmetic Dentistry
- Implants
- Endodontics
- Crown and Bridge
- Teeth Whitening
- New Dentures and Repairs
- Emergency Dental Care
- Veterans' Affairs

*New
Patients
Welcome!*

129 Avon Terrace
York WA 6302
(08) 9641 2123

Participating provider for



York
Estate Agents

York Estate Agents
(Beverley Division)

Good, Bad or Ugly We Sell!

Free Appraisals

"Properties WANTED we have qualified buyers waiting now"

Estate Experts
Professional and Trustworthy

Residential and Rural - Mike Bawden

0403 268 158

Rentals - Jenette Callaghan

0418 929 011

Office - 9641 1335

Email: yorkfn@westnet.com.au

www.yorkfn.com.au



**TYRES FOR ALL MAKES AND MODELS OF CARS AND 4WDS
LARGE SELECTION OF BATTERIES MOST WITH 3 YEAR WARRANTY
AVAILABLE 24/7 FOR EMERGENCIES**

ACDelco

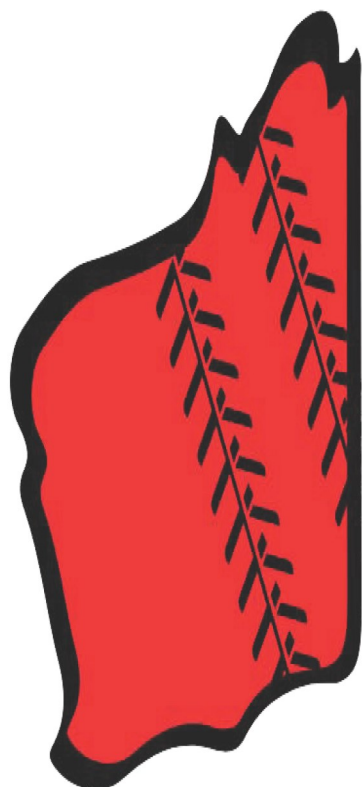


**BLACK DUCK
SEATCOVERS**



0407 457 427

48 DAWSON ST, BEVERLEY **BEVERLEYTYRESERVICE.COM** **@BEVERLEYTYRES**



**W.A.
VULCANISING
SERVICES**

Specialising in

AGRICULTURAL & OTR MAJOR REPAIRS

COMPANY OF



0407 457 427 **48 DAWSON ST, BEVERLEY** **WAVULCANISINGSERVICES.COM.AU** **@BEVERLEYTYRES**



MERRY Christmas

CHRISTMAS CLOSURE

Closed 23 December 2023
Reopening 3 January 2024

Thank you for your continuous support!

135 VINCENT ST, BEVERLEY 6304 (08) 9646 1125
78 WILLIAMS ST, BROOKTON 6306 (08) 9468 3606



Beverley Visitor Centre – Can you help?

Volunteers currently open the Visitor Centre on Saturdays 10am-3pm,
February - December.

The Community Resource Centre manages the Visitor Centre during
office hours.

If you have basic computer skills, enjoy conversing with others and
can work independently are you able to spare a day once in a while
to help to keep the VC open on weekends (either day)?

For more information please contact:

Visitor Centre Manager -

Sam Fricker - Beverley CRC 9646 1600

Visitor Centre Volunteer Liaison -

Dee Ridgway - M 0428 464 007

VINES MEDICAL TEAM

Dr Adebola (Andre) Oladipo

Dr Esther Oladipo

Dr Gerald Chia

Dr Muhit Saqlain

Practice Nurses

Vitou Norea Yem

Allyson Criddle

Allied Health Team

Ryan Woodbury - Chiropractor

Lewis Viney - Podiatrist

Emma Kwok - Dietitian



Opening Times

9am - 5pm Monday to Friday

9am - 12 noon Saturday

Contact

9646 1125 | 9468 3606

135 Vincent St, Beverley WA 6306

Book Online: www.vinesmedicalpractice.com

INTRODUCING THE NEW



VINES AESTHETIC CLINIC

COSMETIC INJECTABLES | HAIR GROWTH | LASER THERAPY



LOCATIONS:

135 VINCENT ST, BEVERLEY 6304 (08) 9646 1125

78 WILLIAMS ST, BROOKTON 6306 (08) 9468 3606

WITHIN

VINES MEDICAL PRACTICE



YOU'RE INVITED

CHRISTMAS DAY CELEBRATION

Monday, 25 December, 10am-12pm
50 Hunt Road Church Building



A free event for all to enjoy
festive presentations and a
sumptuous lunch.



SEATING IS LIMITED.
EARLY RESERVATIONS TO XGANCEX@GMAIL.COM

The Good Life Store

109 Avon Terrace YORK

Open Everyday 9-5pm

Offering Fresh Local fruit and veg
Free Range Eggs
Organic, Gluten Free, Vegan
Products
Bulk Foods
Therapeutic Oils,
Eco Friendly cleaning products
And much much more.



Outgoing Artist in Residence.

As I prepare to leave my stay at the Station Gallery I want to thank the town of Beverley for allowing me to enjoy such a wonderful visit. Many local residents have come through to say Hello as well as a constant stream of visitors to town ... all of whom comment on what a lovely town you have here.

The Railway Station residence itself is an amazing place to stay. Everything has been thought of and I have found my time here very comfortable. The staircase is more suited to a mountain goat, but great for exercise! You've certainly turned up the heat for me this month, but that's part of WA country living, and I think it brought more people through the door for a little escape from the sun. And the local flies appear to really like my art too ... they, and a couple of wasps have come through regularly for a look.

I would like to thank Jenny, Hazel, Marylou and the rest of the Committee for welcoming me and helping me settle in. I have really appreciated being part of your Community for just a short time.

Jennifer Hill

Affordable and Practical **Farm** Safety

Are you aware there is another very affordable and practical farm safety option on the market? We are visiting a few other farmers in your region and wanted to let you know about the services we offer; in case you haven't heard about us. We are the fastest-growing safety business for many great reasons. Affordability, practicality and a 'friend in the know' to call if an incident occurs are just a few.

We were recently announced State Finalists in the 2023 Telstra Best of Business Awards, beating over 20,000 businesses Australia-wide, so we know we are on the right track. We honestly believe that if safety is not affordable, practical, and quick to implement, it just won't happen. The feedback we are receiving is that our approach is very practical and supportive. We won't ask you to throw away any old equipment, just consider it comes with a separate set of instructions for those that use it.

After a 25-year policing career (but starting off as a farm hand when I first left school) I am committed to keeping people safe in my business called Regional Safety Services. As you can appreciate, I have seen all aspects of farming tragedies, and the new Industrial Manslaughter Legislation is not something to be taken for granted. Even if you do not hire staff, you can still find yourself subject to this legislation if something happens and you do not have the required safety systems or records in place.

Most farmers are doing the right thing to keep their team safe but lack the evidence to prove it. This is where we can help you! Unlike our competitors, we come to you and conduct a two-hour on-site safety appraisal for only **\$880.00**. We will arm you with lots of tips and knowledge, prepare the documentation for you with a clear overview of your position and actions to take. You will not be left guessing what you need to do.

To make life easier we have introduced our own online safety forms to help capture your current effort in this area. We have spent over two years developing our Plant and Machinery Risk Assessment forms, which include Harvester, Seeding, and other farm machines. These forms are only \$99.00 to access them for 12 months. These forms have been recommended by farmers like you and most can be done in 1-2 minutes. They can be done on your mobile device, and we provide QR codes for quick and direct access.

If you undertake a service like ours, it would be virtually impossible for someone to say you were grossly negligent, as you are doing something proactive and demonstrating an open commitment to safety. Too many farmers are saying they will plead ignorant if something happens. In light of the recent WorkSafe review of the agricultural industry, there is a massive target on the back of farmers and as such I urge you to help raise the bar of safety in your industry. The WorkSafe review into the agriculture industry is now complete and I look forward to helping my clients get on the front foot with the changes soon to be implemented.

If you have any further questions, I am available on my mobile or feel free to make contact via email and I can send you more details about what we will do when we attend your farm to conduct an appraisal. We also service many other businesses, not just farms.

Darren Slys

Mobile: 0407 420 126 Email: admin@regionalsafetyservices.com.au

Website: www.regionalsafetyservices.com.au

Regional Safety Services
Helping Make Regional Businesses Safer



BEVERLEY MEDICAL PRACTICE



Providing excellent quality health care to the community of Beverley and the surrounding areas
Located at the corner of John and Forrest streets (diagonally opposite the Beverley Hospital)
"Cullen House"

106 Forrest Street, PO Box 434
Beverley WA 6304

Ph: 08 9646 1241 Fax: 08 6117 0410

Email: beverlevmedical@westnet.com.au

OPENING HOURS

Monday to Friday
9am to 1pm & 2pm to 5pm
(Closed Weekends and Public holidays)



General Practitioners

Dr. Remi Adebayo, Dr. Olay Omoniyi, Dr. Sola Oyetunji,

Practice Nurse- Marcle, Nelle – By appointment

BP checks, ECG, woman's health, spirometry, vaccinations, counselling, My Health record,
Drivers and Health Assessments, wound care etc.

Your friendly practice team

Practice Manager – Dawn
Receptionist – Kris, Mary, Lisa

Brookton Medical Practice now open Tues & Fri

Saddleback Medical Centre
Whittington Street, Brookton 6306
Ph: 08 9642 1485

Allied Health Services - Diabetes Educator, Dietitian, Physio, Podiatry, Chiro, Counselling etc.

Christmas holiday operating hours:

Beverley

Friday 22nd Open (last day for 2023)

Saturday 23rd Closed

Christmas Eve Sunday 24th Closed

Christmas Day Monday 25th Closed

Boxing Day Tuesday 26th Closed.

Wednesday 27th Closed

Thursday 28th Closed

Friday 29th Closed

Saturday 30th Closed

Sunday 31st Closed

New years day Monday 1st Closed.

Returning to work Tuesday 2nd January 2024



Brookton will be closed

Tuesday 26th & Friday 29th

Please ensure you have enough medications to last you over the Christmas period.

The Doctors and Staff of the Beverley Medical Practice would like to wish you all a very Merry Christmas and a Safe & Happy New Year.

COVID Vaccines- Book Now! As the Beverley community have been outstanding with their responsibility to attending for all their recommended doses, and with our commitment to reduce wastage we are now maintaining a waiting list for those who may need a further vaccination. This has been due to the logistics of ordering and storing the vaccine in the rural area, please check in for our next vaccination day.

Remember the best way to avoid COVID is to ensure you are vaccinated, wash your hands frequently with soap and water for 20 seconds, use alcohol-based hand sanitiser, cover your cough and sneezes dispose of your tissues and wash your hands after, wear a mask and physical distancing, stay home, and follow the health direct rules if you have symptoms.

Care outside normal opening hours - When the Beverley Medical Practice is closed you can always get medical attention by calling-Ready Care 1800 225 523 or Calling health direct 1800 222 222 or by attending the Beverley District Hospital, located in Sewell Street Beverley where experienced staff will triage the patient and contact the on-call Doctor

For all Emergencies, call 000



Located behind the Beverley Medical Practice Cullen House
106 Forrest Street Beverley

Open **TUESDAYS, WEDNESDAYS & THURSDAYS**
8am – 1pm

Closed Mon, Fri & Weekends

All enquiries to Phlebotomist - Di
Phone: 0428 598 461

Please note that Western Diagnostic Pathology will accept all pathology collection forms.





Service Times for November, 2023

St Mary's Church, Beverley

Sunday, 3 rd December	9.00 a.m.	Advent Sunday - Morning Prayer
Sunday, 10 th December	10.30 a.m.	Advent 2 – Eucharist
	7.00 p.m.	Beverley Christmas Carols – Anglican Church
Sunday, 17 th December	9.00 a.m.	Advent 3 - Morning Prayer
Sunday, 24 th December	8.30 a.m.	Advent 4 – Eucharist
	7.30 p.m.	Christmas Service
Sunday, 31 st December	10.00 a.m.	Combined Churches' Service – Northam

St Mark's Church, Brookton

Sunday, 3 rd December	8.30 a.m.	Advent Sunday - Morning Prayer
Sunday, 10 th December	8.30 a.m.	Advent 2 with Carols for Christmas -Eucharist
Friday, 15 th December	7.00 p.m.	Brookton Christmas Carols - Catholic Church
Sunday, 17 th December	8.30 a.m.	Advent 3 - Morning Prayer
Sunday, 24 th December	10.30 a.m.	Advent 4 - Eucharist
	5.30 p.m.	Christmas Service - Eucharist
Sunday, 31 st December	10.00 a.m.	Combined Churches' Service – Northam

Church of St John in the Wilderness, The Dale

Sunday, 3 rd December	9.00 a.m.	Advent Sunday - Morning Prayer
----------------------------------	-----------	--------------------------------

Special Combined Churches' Carol Services

Sunday, 10 th December	7.00 p.m.	Beverley Christmas Carols – Anglican Church
Friday, 15 th December	7.00 p.m.	Brookton Christmas Carols - Catholic Church

Christmas Eve and Christmas Day Services

Sunday, 24 th December	5.30 p.m.	St Mark's Church, Brookton
Sunday, 24 th December	7.30 p.m.	St Mary's Church, Beverley



Priest-in-Charge: The Rev'd Canon Dr Philip Raymont

Telephone: 0419177178

Email: praymont@perth.anglican.org

Postal Address: P.O. Box 180, York, 6302

Residential Address: 75 Suburban Road, York

Church Correspondence including St Mary's Society:

PO Box 292, Beverley, 6304

Church Website:

www.beverleybrooktonanglicanparish.org



BEVERLEY - 51 LUKIN ST
3X1, DUPLEX, SOLID BRICK, 2 HOMES, 2 INCOMES! RESIDENTIAL FR \$299,000



BEVERLEY - 9 BARTRAM
1489 SQM, VIEW PUBLIC OPEN SPACE, RIVER, CLOSE SHOPS, **MAKE AN OFFER!!** \$47,500



BEVERLEY - 59 RICHARDSON ST
1.5 ACRES, RESIDENTIAL LOT, POWER, WATER + PHONE, MINI ORCHARD, FENCED PRICED TO SELL \$ 110,000



BEVERLEY - BARGAIN!!
5 AC - RESIDENTIAL LOT, FENCED, PWR, WATER, PHONE OFFERS ABOVE \$ 349,0000

MORE PROPERTIES WANTED!! ASK FOR YOUR FREE APPRAISAL TODAY



BEVERLEY
1.2 ACRES - RESIDENTIAL LOT, LEVELLED, READY TO BUILD ON FULLY FENCED, POWER ACROSS STREET, \$ 120,000



BEVERLEY - 39A+B BARTRAM ST
2 GREEN TITLE BLOCKS!! CLS SHOPS RIVER, PWR, WATER, SEWER, 39B 444 SQM \$47,500 - 39A 580 SQM, \$59,000



TOODYAY
HISTORIC BRICK HOME, CIRCA 1920, PERIOD FEATURES, SUIT RESTORATION FROM \$ 295,000



BEVERLEY - 118 LUKIN ST
2 ACRES, 2 TITLES - CIRCA 1890 COTTAGE, POOL, SECURE FENCING FROM \$345,000



JELCOBINE
155 ACRES, 4X1, SHEARING SHED, RIVER, PLUS EXTRAS \$ 645,000+



BEVERLEY
3X1, SUPER STARTER HOME OR INVESTMENT, RESIDENTIAL LOT GREAT POTENTIAL \$210,000



KIM BRYANT
0415 132 471

"Above and Beyond"

Jennie Bryant Realty Licensee: Jennie Bryant - RA 025 Email: jbrealty@bigpond.net.au Phone: 0417 969 033
7 Ougden Way, Medina WA 6167 PO Box 332 Forrestfield WA 6058 ABN 89 055 218 853

This is an



ACTIVE FARMERS

Powered by  

community

**Building stronger and
more resilient farming
communities**

GROUP FITNESS CLASSES

Wednesday
5.15pm

Friday
6:30am
9am

activefarmers.com.au

Robbie: 0428 843 251 Ashlyn: 0427 461 506

COVID-19 UPDATE - Please practice good hygiene and physical distancing at all our events, and use the hand sanitiser stations provided. If you are feeling unwell prior to events, please do not attend.



Artists-in-Residence at the Station

Artists-in-Residence during November:

Jennifer Hill was at the Station for the entirety of November and enjoyed her time immensely – to the extent of booking another residency in 2005.

Artist-in-Residence during December:

Alex Kyriakakis will be at the Station till the 10th of December, and then we welcome back Carollyn Rhodes-Thompson.

Alex Kyriakakis is an artist residing in Perth Western Australia. Her paintings are reflective of her everyday life and her surroundings. She paints 'alla prima' - from life and completes most of her paintings in one sitting so that she captures the colour and light in that moment. Her subject matter ranges from still life, landscapes and



portraits. Alex paints regularly with the Perth Plein Air Painters - painting scenes all over Perth from life and in her studio.

Her professional journey in the visual arts began after high school where she studied Graphic Design at Curtin University. She then completed a Bachelor of Education in Secondary Art Education and worked as an art teacher in various schools all over the state for 10 years.

Alex has also worked as a specialist art teacher in Gifted and Talented programs and has run private art lessons for adults and children.

Please visit the Station Gallery to peruse Alex's works for sale and chat about her work and techniques.



Carollyn Rhodes-Thompson is a familiar face to Beverley having been here for several residencies. Carollyn is a local West Australian artist and teacher of 40 years who has taken her inspiration from her childhood country

background whilst living in Lake King where the land and lakes go on as far as the eye can see. Her work is also influenced by extensive overseas travel. Carollyn gained a Bachelor of Education in Art from Sturt CAE, South Australia. She has studied under internationally recognised artist Thomas Gleghorn and continued studying for her Post Graduate Diploma in art under the guidance of the late West Australian artist, Elizabeth Ford.

Colour, texture and the use of light are very important elements of her paintings as they promote a sense of space, atmosphere and mood. Preferring to work predominantly in acrylics and mixed media, Carollyn enjoys layering the paint to create a 3D effect, enabling one to enter and move through the painting. Please pop in to say g'day, have a cuppa and see her at work.



ARTISTS-in-RESIDENCE for remainder of 2023 and 2024:

DECEMBER - 1 - 7 Alex Kyriakakis

- 7 - 31 Carollyn Rhodes Thompson

JANUARY - 24 - 11(Feb) Kelly Grant and Cheryl Lynne

FEBRUARY - 12 - 26 Thelma Cluning and Sally Watts

MARCH - Kirsten Sivy

APRIL - David Giles

MAY - Jane Li

JUNE: 30 - 11: Wendy Marshall

12 - 1: Cynda Emsall and Sue Mader

JULY: 17- 13 Aug: Jane Zandi

AUGUST: 14 - 3 Sept: Stephanie Boyle

SEPTEMBER: 4 - 30: Tich Dixon and Sheila Monahan

OCTOBER: Carol Patch and Jean Ross

NOVEMBER: Fenella Dexheimer

DECEMBER: cancellation

Station Gallery Open Hours: 11.00am – 3. 00pm
Thursday, Friday, Saturday, and Sunday



Beverley Station Arts Singers) is a FREE community choir which continues to meet weekly on **WEDNESDAYS** for

around an hour and a half from **6pm – 7.30pm** in the Green Room of the Platform Theatre. Kelly Shaw and Jo Sims share the role of Musical Director. Presently BeSASS is practicing for the big sing at the Community

Christmas Concert on 23 December. Come join us in singing for fun!

Singing is wonderful for the soul and in a choir means community and interpersonal connection and you forget about the challenges of daily life.

Anyone wishing to join this friendly choir of BeSASS please contact Hazel Martin who coordinates the group - Ph: 0438 843 333. There is no charge - all we ask is that you become a member of Beverley Station Arts (\$30/year) by the third week of attending BeSASS.



PERFORMING ARTS



BROTHERS IN ARMS - the Dire Straits Experience

So much fun! So much dancing! Just look at these pics of almost 250 people letting their hair down! Thank you Guy for bringing the *Brothers* to your home town!



ALEX & EVIE and the forever falling rain

On Nov 7 an excited and awestruck group of 50 children watched the beautiful production of *Alex and Evie* by the talented Every Other Theatre Company. And they got to decorate an umbrella!



UMBRELLA ART
IS FUN FUN FUN!

NEXT EVENTS at the Platform Theatre:



BEVERLEY COMMUNITY CHRISTMAS PARTY

SATURDAY 23 DECEMBER

Circus workshop; Santa & his friends; Solo Flight;
Carols by Candlelight; and Mr Snotbottom....



Kids will be thrilled with the hysterically deesgusting kids comedian brimming with all the ooey, gooey yucky things kids love!

Prior to Mr SnotBottom's show, and a visit by Santa, a circus workshop for the children will be lead by the amazing

'Natural Wings' Dawn Pascoe who at sunset will perform her aerial act "Solo Flight" on the silks and dance trapeze. Her style of aerial dance is unique, creative and raw. Carols by Candlelight follows her act.



LE DINER EN BLANC may well be returning to Perth this month, but why go to the bother of senseless membership and bus expenses when we'll be having our very own **Diner en Blanc** in Beverley!

Save the Date – SATURDAY 24 FEB 2023

It's the night when we get dressed all in white and meet for a mass "chic picnic" in a public space. Our public space will of course, no surprise, be the Platform Theatre! And really guys, we don't mind if you come straight from the cricket pitch or the bowling green in your whites – just be there! Your partners will be only too happy to bring the table settings (white tablecloths and napkins, crockery and cutlery, candles etc) – a prize for the best dressed table no less! Don't feel like bringing your own picnic? Then catering company Gather York will be on hand to sell pre-packaged share meals – but you must order a few days in advance.

Music will be by the amazingly talented **Adrian Wilson**.

- PLATFORM THEATRE - Gates open 6.30pm to set tables (BYO tableware/picnic or phone 038 843 333 to order pre-packaged meals)
- Prize for best dressed table
- Dinner 7.15pm (started by napkin wave) and performance 7.30pm
- Licenced bar – STRICTLY NO BYO
- TICKETS: \$30 Adult | \$27 Conc | \$25 Member
- Beverley CRC - Ph 96461600 OR www.trybooking.com/
- Table bookings - Ph Hazel 0438 843 333 Or
- Email admin@beverleystationarts.com

AN EVENING WITH...MARINA PRIOR

Save the Date!! - - FRIDAY 17 MAY 2023 - -

Australia's leading lady of Musical Theatre, Marina Prior is returning to WA in May 2024 for an intimate series of performances at select urban and regional theatres. (Beverley's date will be at the Town Hall)

Accompanied by piano maestro David Cameron, Marina will perform songs from her vast repertoire of musical theatre hits, fan favourites and contemporary classics. A performance that will not only be memorable but one not to miss! Be quick to book as BSA's reduced prices has meant 160 tickets have sold already! Bookings at Beverley CRC - Ph 96461600

- OR online www.trybooking.com/CMZTJ

MERRY CHRISTMAS

AVON VALLEY AG

BEVERLEY

CHRISTMAS

HOURS

SATURDAY 23RD: CLOSED

SUNDAY 24TH - CLOSED

MONDAY 25TH - CLOSED

TUESDAY 26TH - CLOSED

WEDNESDAY 27TH - 8AM-2PM

THURSDAY 28TH - 8AM-2PM

FRIDAY 29TH - 8AM-2PM

SATURDAY 30TH: CLOSED

SUNDAY 31ST - CLOSED

MONDAY 1ST - CLOSED

TUESDAY 2ND - NORMAL TRADING

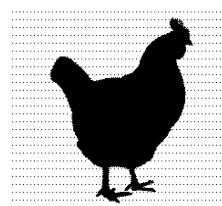
Young Laying Hens

16 to 20 week Old Hyline Pullets

Hyline chickens are Excellent Egg layers of Large brown eggs. Commercial Layers & have been Vaccinated

They are at point of lay so will be laying

within weeks **\$30**ea Delivered



For Delivery dates in November & December

& enquires if I can Deliver to you

Please ☎ **0431 564 931**

Can meet up in towns or deliver to your farm - York Beverley Cunnerd in Kellerberrin Quairading Tammin Corrigin

I live in Quairading so Pick up can be arranged

Je Mode

Photography Studios

Jodie Edom Nolf



0415 369 405

116 Vincent Street, Beverley

BEVERLEY TREE & GARDEN SOCIETY

With the year nearing its end the November meeting included the AGM. The committee remains unchanged with the following office bearers being re-elected.

President – Linley Thompson

Vice President – Lyn Murphy

Secretary – Dorothy Sampson

Treasurer – Valery Seeber

Social Secretary – Diane Colebrook



During the general meeting we reflected on the annual Rose Show which was a little disappointing due to the weather conditions affecting the roses and causing them to bloom earlier than expected. As we cannot reliably predict the weather it was decided to fix the date to mid October and not try to second guess the outcome by changing the date.

The Christmas lunch will be held on Friday the 8th of December at the Freemasons hotel at a cost of \$27.00 per head. We will have a secret Santa for those who wish to participate with a gift to the value of around \$10.00. Lunch will be served at 12 noon.

The next meeting will be held on Tuesday the 5th of March at a venue to be announced. Wishing everyone a Merry Christmas and a happy, healthy and safe 2024.

Ingredients

200g butter, room temperature

90g caster sugar

270g plain flour

60g cornflour

1/2 tsp baking powder

1/4 tsp salt



Christmas Shortbread

Method

1. Cream butter and sugar in a stand mixer (or hand-held electric mixer) until well combined.
2. Sift plain flour, corn flour and baking powder into butter mixture, add salt and beat on low speed until mixture comes together in a ball.
3. Transfer to a floured surface and knead lightly. Divide mixture in two and roll into sausages about 2.5-3cm in diameter. Cover with plastic wrap and refrigerate 30 minutes.
4. Preheat oven to 130°C and lightly butter baking trays.
5. Cut sausages into 1cm widths and place on trays. Sprinkle with extra caster sugar and bake for 1 hour.

Rose Show Results 2023

Section A

- 1.Red Rose** 1st Susie Wright
- 2.Rose Pink** 1st Jo Sattler
2nd Susie Wright
- 3.Rose Yellow or Gold** 1st Jo Sattler
2nd Val Lamb
- 4.Rose Cream or White** No first
2nd Gerry Brennan
- 5.Rose Fancy Colour** 1st Jo Sattler
2nd Jo Sattler
- 6.Rose David Austin** 1st Hazel Martin
2nd Hazel Martin
- 7.Rose Mauve** No first
2nd Jenny Broun
- 8.Rose Apricot** 1st Betty Wauchope
2nd Apex Park
- 9. 3 Roses – In Separate Bottles, One Colour**
1st Jenny Broun
- 10. 3 Roses, One Bud Showing Colour, One Half Open, One Full Bloom**
1st Betty Wauchope
2nd Jenny Broun
- 11. 3 Roses – Any Colour In Separate Bottles**
No first
2nd Tim Law
- 12. Bowl or Vase of Polyanthus or Floribunda Roses**
1st Jo Sattler
2nd Garden Club
Highly Commended Jo Sattler
- 13. Vase of Any Variety of Roses, Not More than 9 Blooms**
Any Colour and Rose Foliage
No Entries

14. Vase of Full Blown Roses

- 1st Jo Sattler
2nd Jo Sattler

Section B

15. Modern Arrangement With Roses Predominating

No Entries

16. Arrangement of Roses For Mantlepiece, Any Foliage

- 1st Geraldine Faithfull
2nd Gerry Brennan

17. Arrangement of Roses in an Unusual Container

- 1st Garden Club
2nd Garden Club

18. Arrangement of Roses or Rose for Table Centre with any Foliage and/or Accessories

- 1st Geraldine Faithfull
2nd Jenny Broun

Trophies and Prizes

Champion Bowl or Vase - 1st Jo Sattler

Vera Johnson Trophy 2nd Jo Sattler

Best Single Rose in Section A 1st Jo Sattler
2nd Jo Sattler

Best in Section A Category 10

3 Roses – One Variety – One Bud Showing Colour, One Half Open, One Full Blown
1st Betty Wauchope
2nd Jenny Broun

Best New Exhibitor Jenny Broun

Champion in Section B

- 1st Geraldine Faithfull
2nd Geraldine Faithfull

Most Outstanding Exhibit –

Perpetual Trophy Jo Sattler

MERRY CHRISTMAS

WORD SEARCH

Find and circle the words.

M	T	R	D	B	Y	B	A	G	Y	T	A	R	T
R	E	I	N	D	E	E	R	N	S	E	L	O	M
U	R	B	I	K	N	R	A	H	D	O	D	L	I
T	C	E	L	E	B	R	A	T	E	G	N	H	S
R	E	C	H	R	I	S	T	M	A	S	H	A	T
X	Y	Z	D	U	L	O	R	H	A	U	A	G	L
H	O	L	I	B	A	U	B	L	E	I	N	D	E
U	X	G	B	R	A	E	T	Y	K	R	T	A	T
W	R	E	A	T	H	M	A	S	P	E	A	L	O
P	G	O	R	N	A	M	E	N	T	S	N	T	E
K	T	Y	O	S	T	O	C	K	I	N	G	L	M

- reindeer
- wreath
- bauble
- christmas
- stocking
- mistletoe
- celebrate
- ornaments



MERRY CHRISTMAS





Beverley Community Garden

Hello from the Beverley Community Garden

The summer season seems to have set in early this year and the effects have been felt by all, from animal to plant, nobody has escaped the heat and it is just the beginning of summer. Yay!!

In spite of the heat, the BCG is looking very nice indeed. There is a plethora of plant, insect and bird life that surrounds us as we maintain the Garden, removing older plants and planting so many seedlings, all of which require water.

Which brings us to a very big thank you to all persons who have donated their time and materials to the BCG centre. Due to the hard work and persistence of our President Betty Lobb and other volunteers we now have scheme water supplied to the block.

This was achieved by government grants and donations. The next step in the process was getting the water from the tap to the actual garden beds.

Thank you to Kodie Fleay - a Beverley plumber, who has donated his time and energy in digging the ditches needed to lay out the water pipes. Kodie also donated a return value, thank you.

Thank you Karl Smith, a local electrician for donating the machinery needed to dig the ditches.

The BCG would like to say, we thrive on people who donate to the community, such as Karl and Kodie. They are actively supporting the community we live in, please do support their businesses as we need their expertise to stay in our community and not go elsewhere.

Our garlic harvest this year was amazing. We planted 1000 cloves of garlic and we now have 1000 bulbs of garlic to sell. Organic, juicy fresh garlic is delicious in food and /or for medicinal purposes.

Come and purchase some garlic, you will not be disappointed in the quality; 3 large garlic bulbs are \$5 and 4 small garlic bulbs are \$5. The garden is bursting with all sorts of green leafed vegetables.

The very young fruit trees are determined to give us a crop this year, come and see for yourself.

Once again ,thank you for all the recyclable bottles that we receive. These donations are the BCG's life blood, please do continue to donate.

Come and have a cuppa and a chat. We are a very friendly bunch and enjoy our time together.

Kind Regards,

Eleonora Di Bello-Greatley





Reserve Pool River Health Assessment

On Tuesday 14th of November, several FODR members were able to observe River Ecologists from the Dept. Water and Environmental Regulation (DWER) as they conducted a repeat River Health Survey at Reserve Pool on the Dale River.

Field data was collected to assess a wide range of indicators that reflect the health and viability of the river pool including the presence of:

- Aquatic biota: the abundance and health of native and exotic fish and crustaceans.
- Water Quality: dissolved oxygen, temperature, alkalinity and ph.
- Aquatic habitat, physical form and local land use.

Five species of native fish (nightfish, pygmy perch, western minnow, western hardyhead, blue-spot goby) and two crustaceans (gilgie, glass shrimp) were observed as well as the introduced gambusia and plenty of long-necked turtles. FODR monitoring using trail cameras has also confirmed the presence of Rakali at Reserve and Mile Pools on the Dale River. Such a diverse range of species indicates that the pool is in relatively good health and as such an important river ecosystem in the Avon Valley. A formal report by DWER will be published on their website in due course.

Friends of the Dale River work towards preserving and enhancing Reserve Pool and its environs and we welcome new members. Our AGM is being held on Sunday 3rd December, 4pm at the Dale River Reserve followed by an end of year get together BBQ (weather permitting). BYO food and drinks.

For more information contact Linley 0429 953 800, Hazel 0438 843 333 or email friendsofthedaleriver@outlook.com



Main Roads will shortly be sealing the shoulders and rehabilitating the Great Southern Highway between Brookton and Beverley. Audible edge lines will also be installed.

Dates for construction are not yet confirmed. Works are likely to commence in January 2024 until April 2024 when there will be a break over winter and construction will resume around September/October 2024.

During rehabilitation works there will be width restrictions for heavy vehicles. If you need to move wide agricultural equipment during the times above please get in contact with us on 138 138 so that we can discuss movements.

There will also be a gravel surface and significant distances of speed restrictions during the works. We ask that you plan extra time for your journey.

Shoulder sealing and installing audible edge lines help prevent run-off road crashes by providing a greater distance for drivers who veer off the road to recover. These works are part of a program that will see more than 8,500 kilometres of rural roads treated and is a huge step towards preventing deaths or serious injury on our regional road network.

Timber bridge 311 (near Smart Road) is also due for replacement and the road will be realigned 2 kilometres either side of the bridge. This will be done at a future time.



Beverley District Health Service

We are looking to freshen up AML, if anyone has any (*mostly*) white paint they may wish to donate. Also, if anyone has a few old Christmas DVDs and/or Christmas CD's that they no longer require, and you wish to donate these, please drop them into Reception at the Hospital, this would be greatly appreciated. Thank you.

Western Australia is experiencing an increase in community transmission of Covid-19.

As a Health Care facility, we continue to implement infection control measures to protect the most vulnerable and ensure the safety of our staff, patients, and visitors.

Things you can do to help protect yourself and the community from COVID-19. Remember to stay home and get tested if you are unwell, wear a mask as needed and stay up to date with COVID-19 vaccinations.

Thank You!



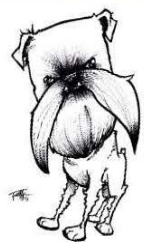
A huge thank you to Erica for the lovely bouquets of flowers that you provide for our residents, your kindness is valued and always welcome.

Melbourne Cup Day was great fun with all exhibited hats in full display, lots of fine delicious foods and nibbles were enjoyed, we celebrated Australia's most prestigious

The Race that stops a Nation



Celebrating Rays birthday was a highlight, singing happy birthday and enjoying his birthday cake (*thank you to Elizabeth – Cook*), although we noticed that Ray had a little helper, making sure no crumbs were accidentally dropped. Our little helper Charlie believes that sharing is caring!



16 Days in WA

25 November – 10 December

2023

The annual 16 Days in WA – Stop Violence Against Women campaign takes place from 25 November, the International Day for the Elimination of Violence Against Women. Family and domestic violence is prevalent across some communities. Violence against anyone is unacceptable. We all have a responsibility to stop family and domestic violence. Stopping family and domestic violence means promoting gender equality and respectful relationships.

24-hour helplines

If it's not an emergency and you need support, you can call these numbers 24 hours a day, seven days a week.

1800RESPECT National Sexual Assault, Domestic Family Violence Counselling Service: a national telephone and online counselling and referral service. Phone: **1800 737 732**.

Men's Domestic Violence Helpline: provides telephone information and referrals for men who are concerned about their violent and abusive behaviours, and for male victims of family and domestic violence in Western Australia. Phone: **1800 000 599**.

Women's Domestic Violence Helpline: provides support for women, with or without children, who are experiencing family and domestic violence in Western Australia (including referrals to women's refuges). Phone: **1800 007 339**.



THANK YOU!!

Thomas the Tank WesCarpade Supporters

We had an amazing 10 day adventure driving the Wheat to Wharf trek with fellow Weski Entrants. During our trek we traveled the Southwest visiting towns, schools, supporting local businesses, sporting groups, community groups and everything else in between. But most of all we enjoyed the local scenery and drove to support Camp Quality.

***Team Thomas - Thomas the Tank Wescarpade raised
\$11,255 for Camp Quality.***

Thank you everyone for your Support!!

And to our local Beverley Business, thank you for supporting us.

Beverley Post News and Gifts, The Red Vault - Beverley, Wheatbelt Audit Co., The Beverley Bed and Breakfast, Beverley Mens Shed and Beverley CWA.

2023 WesCarpade trek consisted of 16 themed cars, 10 support vehicles and a supplies truck.

The Weskie team drove from
Newdegate to Norseman

Norseman - Condingup - Esperance

Esperance - Munglinup - Ravensthorpe

Ravensthorpe - Pingrup - Albany

Albany - Rocky Gully - Walpole

Walpole - Northcliffe - Nannup

Nannup - Evedon Retreat - Bunbury



***In total the Weskie Crew raised
\$304,597!!!
All for Camp Quality.***

The 10 day adventure definitely wasn't without a bit of drama, our 1st day in the sandy tracks saw not only Thomas heat stop because of the high temps, but several other vehicles did as well. Quite a few vehicles had fuel issues because of the dirt and sand, so for safety reasons we ended up running new lines in Thomas. The tracks in some places were quite rough with several cars including Thomas damaging engine mounts which luckily the WesCarpade mechanics were able to reweld and sort. Other than 15 out of 16 themed vehicles finished the 2023 WesCarpade trek without too much drama (Sadly the pirate ship smashed a wheel hub, therefore didn't get to finish).

In 2024 Thomas the Tank - WesCarpade will be heading out on another WesCarpade trek stay tuned for the January Blarney when all will be revealed for Thomas's next adventure

BEVERLEY BOWLS

November results and ladders for Men's and Ladies Pennant teams

Men's Blue

Round 3 Beverley d Goomalling 7 -1 (107-77)
 Round 4 Beverley d Dowerin 6-2 (115-90)
 Round 5 Beverley d Bolgart 8-0 (110-77)

	P	W	L	points
Northam	5	5	0	34.5
Beverley	5	4	1	29
Dowerin	5	3	2	28
Toodyay	5	3	2	21
York	5	2	3	18
Goomalling	5	2	3	16
Meckering	5	1	4	10
Bolgart	5	0	5	3.5

Men's White

Round 3 Goomalling d Beverley 7-1 (105-58)
 Round 4 Bye
 Round 5 Beverley d Northam 6-2 (81-76)

	P	W	L	D	bye	PTS
Northam	5	2	1	1	1	20
York	5	2	1	1	1	20
Beverley	5	2	2	0	1	16
Goomalling	5	2	2	0	1	15
Dowerin	5	1	3	0	1	9

Ladies

Round 3 Northam Red d Beverley 4-0 (56-26)
 Round 4 Beverley d Goomalling 3-1 (41-39)
 Round 5 Beverley Forfeit (covid)

	P	W	L	D	Bye	PTS
Northam Red	5	4	0	1	0	17
Northam Blue	5	3	2	0	0	14
Cunderdin	5	4	1	0	0	14
York	5	3	2	0	0	13
Bolgart	5	3	2	0	0	12.5
Quarading W	5	3	2	0	0	11
Goomalling B	5	2	2	1	0	10
Toodyay	5	2	3	0	0	8
Quariding R	5	2	3	0	0	7.5
Beverley	5	2	3	0	0	7
Dowerin	5	1	4	0	0	4
Goomalling W	5	0	5	0	0	2

The Ladies held their Championship Singles on Thursday 16th

Champion Glenys Collins
 Runner-up Lyn McTaggart
 Plate Maxine Watts

Congratulations to Lyn for being selected for the Inter League round Robin

The Club is looking for a member to run a Barefoot Bowls Competition early in the New Year. Sponsorship has been organized

The club has a CBH Growers number. for anyone who would like to donate. Donation go towards our Replacement Greens Fund



JOIN OUR TEAM

2024



REDBACKS - support your club by joining our committee as **Treasurer**, or joining the team as **Canteen Manager**.

No experience required!

Give Blake a call for more info: 0499 166 160

Beverley Memorial Swimming Pool

SEASON OPENS NOVEMBER 1, 2023



Opening Hours:

Mon & Wed - Sun: 12 noon to 7pm
Tuesday Closed

Early Morning Lap Swimming:

Mon & Wed - Fri: 6am - 7am

Admission Fees:

Under 5: No Charge
Child (5-17): \$2.00
Adult (18+): \$5.00
Spectators: \$2.00
Pensioner/Senior: \$3.00

Season Pass Fees:

Child: \$20.00
Adult: \$50.00
Pensioner/Senior: \$30.00
Family (2A & 1C) \$100.00
Family (2A & 2C): \$120.00
Family (2A & 3C): \$140.00
Family (2A & 4C): \$160.00



**BEVERLEY AMATEUR
SWIMMING CLUB**

BEVERLEY AMATEUR SWIMMING CLUB CONTACT DETAILS

✉ beverleyswimclub@outlook.com

President - Hollie Smith 0409299089

Vice President - Jo Copping

Secretary - Vacant

Treasurer - Christine Hagan

2023 Season has begun!

In the blink of an eye, the winter months have gone and summer is here.

Our swimmers have started the season with a bang and it's great to see so many new members.

The committee wish all our members a very Merry Christmas and Happy New Year



Beverley Swim Clinic

Date: Sunday 10th December 2023
Location: Beverley Swimming Pool
Cost: \$20 for current Swimming WA members*
Swimming WA members - [REGISTER HERE](#)
\$40 for non-Swimming WA members*
Completed Level 6 Learn to Swim is required to attend
Non-members - [REGISTER HERE](#)
*Excludes Swim Central fees

Coaches: Fiona Njirich & Jo Stephen

Clinic 1:

Ages 11 & Over
9-10.15am

Clinic 2:

Ages 10 & Under
10.30-11.45am

Registrations open 8.45am Registrations open 10.15am

For any queries please contact Jessica Hall - development@wa.swimming.org.au



2023/24 FEES

These Fees are set by Swimming WA. BASC currently does not charge an extra fee to go to the Club. Fundraising opportunities will occur throughout the season to keep costs down

★ JUNIOR DOLPHIN \$40.00

5-8 year olds

**Must have passed Stage 3 - proof to be provided

★ PARTICIPATION \$85.00

9 years and older

PARENT / GUARDIAN \$5.15

A Parent/Guardian must also be a member, if child is under the age of 18

COMMITTEE MEMBER FREE

COACH \$30

COMPETITIVE \$141.00

ONLY for swimmers who actively seek to swim approved/sanctioned competitive swimming all year round. DO NOT choose this option for general membership

SWIMMING WA REGIONAL SWIM CLINIC

With some exciting news, Swimming WA will be coming to the Beverley Pool on Sunday 10th December for a Regional Swim Clinic.

This Clinic is open to everyone

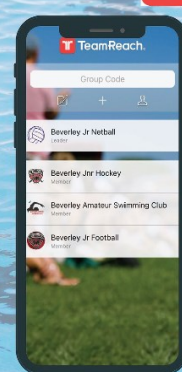
Swimming WA Members \$20

Non Swimming WA Members \$40

All registrations are via Swim Central



**STAY UP TO DATE
VIA THE TEAMREACH
APP**



**CODE:
Beverleyjrswim**

MONDAY		FRIDAY		WEEKEND
		3 rd Nov 3.30pm	BUSY BEE/CLEAN UP	
6 th Nov 3.20pm	Coaching	10 th Nov 4pm	Time Trials	
13 th Nov 3.20pm	Coaching	17 th Nov 4pm	Time Trials	
20 th Nov 3.20pm	Coaching	24 th Nov 4pm	Time Trials	
27 th Nov 3.20pm	Coaching	1 st Dec TBA	Club Carnival #1	
4 th Dec 3.20pm	Coaching	8 th Dec 4pm	Time Trials	Sunday 10 th Dec REGIONAL SWIM CLINIC @ Beverley - ALL Members
11 th Dec 3.20pm	Coaching	SCHOOL HOLIDAYS START		🎄🎄🎄🎄🎄🎄🎄

Ideas Teams

IS THERE ANYTHING EXTRA, NEW OR DIFFERENT THAT YOU WOULD LIKE TO SEE IN YOUR MONTHLY BLARNEY?

IS THERE ANYTHING YOU MIGHT LIKE TO SEE A LITTLE LESS OF? AS THE BLARNEY IS A COMMUNITY NEWSPAPER, WE ARE LOOKING FOR IDEAS FROM THE COMMUNITY TO BRING FRESH, NEW AND INTERESTING THINGS TO OUR BLARNEY READERS.

PLEASE FEEL FREE TO DROP IDEAS INTO THE SHIRE OF BEVERLEY OFFICE OR EMAIL THEM TO BLARNEY@BEVERLEY.WA.GOV.AU

Thanks, Corretta



WHEATBELT'S
first WAFL team



Introducing the first WAFL Wheatbelt Team

WHEATBELT WOLVES

TRAINING STARTS OCT 19TH - 7:30PM

- ✓ Beginners Encouraged
- ✓ Family Friendly
- ✓ Pub Dinners to Follow

Join the Wheatbelt Wolves, the first women's football team in the Wheatbelt region, for an exhilarating football experience. With passionate coaches, flexible training options, and exciting matches starting in February, it's the perfect opportunity to connect with others, boost your fitness, and master a new sport in the Wheatbelt. Don't miss your chance to be a part of this awesome opportunity!

LEARN MORE



Training Grounds York Football Oval | Contact Us wheatbeltwolves@gmail.com

SHIRE OF BEVERLEY COMMUNITY GRANTS



OPEN NOW

Does your incorporated organisation have a local project that needs some extra financial help?

Application packages will be available from the Shire office from 1st January 2024 and submissions close 31st January 2024. Late applications will not be accepted.

Please contact the Shire Office to discuss the eligibility of your project/application before applying.

Further information about eligibility and application criteria is available in the application package.

MINOR COMMUNITY GRANTS

Funding up to a maximum of \$1,000 with no matching funds from applicant

Projects must seek to further the development of one of the following:

- early years (0 to 4 years);
- environment;
- history and or heritage;
- seniors;
- tourism;
- volunteer upskilling;
- youth (5 to 18 years) .
- Sport & Recreation

MAJOR COMMUNITY GRANTS

Funding between \$1,001 & \$5,000 50% of the total project cost in matching funds from applicant

FOR MORE INFORMATION PLEASE CONTACT...

Ali Lewis
Executive Assistant
T: (08) 9646 1200
E: ali.lewis@beverley.wa.gov.au

It's been a busy month!

Lew & Sandy Shaw Handicap Doubles Tournament. This is always a wonderful day of tennis and we sincerely thank Lew and Sandy for their support of this event. The delicious food supplied by Sandy is also a treat! Ladies winners were Laura McLean & Ali Lewis with Runners Up Nat Ashworth & Chantelle Meade. Men's winners were Marc Edwards & Darrell Hagan with Runners Up Keith Murray & Mitchell Ashworth



Thank You! Big Shout Out to Brett Shaw, Lew Shaw & Blake O'Meagher who recently did the harvesting of our Tennis Club crop. This is such an important fundraiser for our club and we appreciate all the time, effort and resources from seeding all the way through to getting it to the bin!

Don't forget, our great community program through Vitterra. When contracting with them if you mention the Beverley Lawn Tennis Club they will make a donation to our club.

Expression of Interest – Easter 2024

The Beverley Lawn Tennis Club is seeking expressions of interest from a local community group that would be interested in supporting the catering of our Sunday Evening meal on Easter Sunday (31st March 2024) This would involve the preparation, service and cleaning up of a meal as organised by the Tennis Club. If your club is interested in this fundraising opportunity, please email us by the 15th December, at: secretary.beverleyltn@gmail.com

Our Juniors have been busy!

Well done to our Beverley Crew who have participated in the D'Arcy Slater Cup and Women in Tennis Foundation Cup in October. Abigail Bailey, Noah Shaw, Pippa Murray, Ashlyn Higgins & Alec Murray! We are so proud to have our Juniors represent The Beverley Lawn Tennis Club as part of the Central Districts Tennis Association.



Our 5-week Hot Shot Sunday coaching has come to an end. The kids thoroughly enjoyed Keith's weekly visits and we have seen improvement. Thank you Mr O! We also ran for the first time Hot Shots for ages 3-5. This cute little group had loads of fun. Thank you Chantelle Meade for running these sessions, safe to say I think you enjoyed it too! A HUGE thank you to Narelle Bailey for coordinating this coaching.

Sunday coaching with Mr O

Ages 3-5 with Chantelle Meade





On the 11th November the Club held a very successful junior tournament, proudly sponsored by Noel and Valda Morton, Elders Beverley. Thank you Noel & Valda for your sponsorship. Our Juniors are very lucky. 67 kids took to our courts in both doubles and mixed doubles. A huge number of parent helpers both on and off the court.

Thank you, club and committee members who assisted at this event, your time is appreciated. Special mention to Narelle Bailey and Carissa Shaw for coordinating this day, it ran like clockwork. Well done and thank you Ladies!

Our local trophy recipients include Cooper Vandenberg, Alex Hagan, Steele Sattler, Zara Copping, Lucy Bailey, Jasmine Aaron, Hamish Tonkin, Alec Murray, Pippa Murray, Phoebe Smith, Ashlyn Higgins and Abigail Bailey. Well done to each and every participant. Be proud of your efforts. To keep up to date with upcoming tournaments ,follow Central Districts Tennis Association on FB.



Ladies have been on tour. Great fun at the Northam Open day early November! No winners but it was an enjoyable day.

Upcoming - See Christmas Flyer elsewhere in the Blarney.

See you on the courts!



Beverley Lawn
Tennis Club

Sunday

17th Dec



Chris Boladeras

Memorial trophy & Christmas Windup

Mixed Doubles- draw for partner

Sponsored by

Richard Boladeras
&
Family

&



BBQ Dinner

please bring a salad to share

BBQ packs available to purchase

Prizes for best
Christmas attire

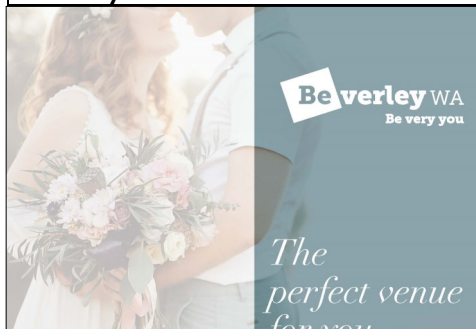
Names to
Emily by
Wed 13th Dec
0400 493 952

LOCAL CLUB/GROUP CONTACTS



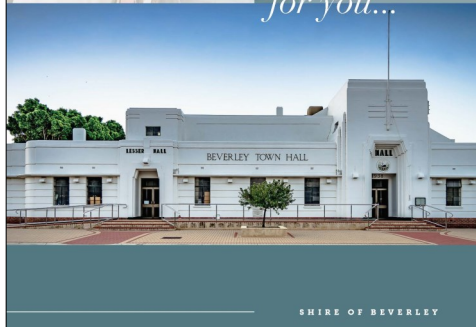
Adult Horse Riders Social Group	Marie Hammond	0447 121 014
Anglican Parish of Beverley-Brookton	Priest: Philip Rayment	0419 177 178
Beverley & Districts Motorcycle Club	Anthony Fiaschi Greg Offer	0419 993 232 0428 120 003
Beverley Agricultural Society	President: John Maxwell Secretary: Bruce Hunt	0400 146 253 0404 044 202
Beverley Amateur Swimming Club	President: Hollie Smith Secretary: Carissa Shaw	0409 299 089 0428 813 822
Beverley Badminton Club	Captain: Patricia Bekkers	0421 434 465
Beverley Bowling & Croquet Club	President: Jeff Murray Ladies Capitan: Lyn Murphy Mens Capitan: Brendan Minchin Croquet Captain: Beverley Hoey	0439 461 634 0458 088 674 0428 371 714
Beverley Community Garden	Betty Lobb Eleonora Di Bello Greatly	0400 569 971 0418 906 422
Beverley Community Markets	Jenny Foster	0418 454 571
Beverley CWA	President: Pat Hambly Secretary: Sam Mearns	9646 1481 0447 160 076
Beverley DHS P&C	President: Matt Davey	0429 002 212
Beverley Football & Netball Club	President: Blake O'Meagher Secretary: Dale Wansbrough/Charlie Horrocks League Coach: Kyle Martin Reserves Coach:	0499 166 160
Beverley Garden & Tree Society	President: Linley Thompson Secretary: Dorothy Sampson	0429 953 800 0429 989 031
Beverley Golf Club	President: Darryl Hagan Mens Capitan: Mark Bickley Ladies Capitan: Jane Murray	
Beverley Historical Society	President: Glenys Petchell Secretary: Morag Whitney	0417 973 559 9646 1075
Beverley Horse & Pony Club	President: Bec Halbert Secretary: Tess Hawke Treasurer: Jess Martin Coach Coordinator: Lindley Cassidy	0419 879 310 0419 879 310
Beverley Junior Sports	President: Megan Vandenberg Secretary: Jo Copping Football Coordinator: Tamara Nixon Netball Coordinator: Emma Davey Cricket Coordinator: Jo Copping Hockey Coordinator: TBA	0438 972 335 0438 972 335
Beverley Lawn Tennis Club	President: Chantelle Meade Secretary: Rebecca Smith	0429 418 576 0428 805 681
Beverley Men's Shed	President: Peter Cashmore Vice President: John Fricket Secretary: Bob Green	0427 427 919 0428 147 041 0429 441 253
Beverley Naturalists Club	Phyllis Facey	9646 1469
Beverley Netball Club	President: Jo Copping Secretary: Sam Mearns	0438 972 335 0417 973 731

Beverley Off Road Motor Sports Assoc	Cheryl Simson	0409 205 551
Beverley Patchwork & Quilters	Denise Hales	0417 184 563
Beverley Pistol Club	President: H Henderson Secretary: Alex Henderson	0407 457 427 0407 457 427
Beverley Playgroup	President: Kelly Aaron Secretary: Melissa Blechynden	0400 772 081 0429 504 963
Beverley Redbacks Hockey Club	Secretary: Britt Hadlow	0447 811 267
Beverley Soaring Society Gliding Club	President: Geoff Overheu Secretary: Piero Velletri	0407 575 216 0417 045 437
Beverley Station Arts	Chair: Jenny Broun Coordinator: Hazel Martin Art Exhibiton Secretary: Ashton Edmonds	0419 040 063 0438 843 333
Beverley Amateur Dramatics	Britt Hadlow	0447 811 267
Beverley Station Arts Singers	Hazel Martin	0438 843 333
Beverley Toy Library	President: Kelly Mann Secretary: Skye Carlhausen	0428 779 234 0438 353 634
Clay Target Club	Secretary: H Henderson	0407 457 427
Cricket Club	President: Stephen Gollan Coach: James Adams	9646 1200 0429 461 000
Cropping Committee	Secretary: Stephen Gollan	9646 1200
Dale Community Group	President/Treasurer: Yvonne Hobbs	0438 370 755
Dale River Sports Ground Committee	Secretary: Georgina Beecroft	9647 1089
Friends of the Dale River	Linley Thompson Hazel Martin	0429 953 800 0438 843 333
Novus Agri	President: Kelly Mann Secretary: Skye Carlhausen	0428 779 234 0438 353 634
Beverley OP Shop	President: Gina Adams Secretary: Jo Sims	0427 461 368 0400 661 256
Rifle Club		9641 6061
Royal Antediluvian Order of Buffaloes		0419 945 240
Southern Avon Ladies Darts	Monica Camenzuli	0474 105 242
St John Ambulance	Chairperson: Drew Doncon Become a Volunteer: Jenny Rayner Sub Centre	9646 0646 000
Beverley Line Dancers	Jan Turrell	0429 952 177



Beverley WA
Be very you

The perfect venue for you...



SHIRE OF BEVERLEY

The Art Deco Beverley Town Hall is situated in the Avon Valley; a comfortable drive from Perth city. This venue offers a unique, budget-friendly option for your special day.



Investment

- ✓ \$1,000 for all inclusions as below
- ✓ 1.5 hour journey from Perth

Includes

- ✓ Three Day Access
- ✓ Tables
- ✓ Chairs
- ✓ Cutlery / Crockery
- ✓ AV System / Projector
- ✓ Commercial Kitchen
- ✓ Bar Facility
- ✓ 150+ Person Capacity
- ✓ Main Hall
- ✓ Lesser Hall
- ✓ Dressing Room


The Beverley Town Hall Experience...

Standard seating is different to that shown.

Photo Inspiration

- ✓ Yennening Lakes
- ✓ County Peak
- ✓ Vampire Jets (Great Southern Hwy & Lukin Street)
- ✓ Cornerstone Building
- ✓ James Giddy Street Art
- ✓ Station Art Gallery & Platform Theatre
- ✓ Avondale – Agricultural Machinery Museum



Local Suppliers

- ✓ Catering
- ✓ Photography
- ✓ Flower Arrangements
- ✓ Accommodation
- ✓ Bus Hire

SHIRE OF BEVERLEY

BEVERLEY REAL LIFE CHURCH



*Living life with
Christ*

*All Welcome
Every Sunday
10 am*

50 Hunt Road, Beverley

*new members
welcome*



Beverley Station ArtS Singers

BeSASSy



**Meeting Wednesday Nights
6.00pm - 7.30pm**

In the Green Room at the Platform Theatre

Enquiries can be made by calling
Hazel 0438 843 333

Beverley Community
Garden

**FUNDRAISING
RECYCLE PICK UP**

If you have any plastic
or glass bottles or
cans to be recycled,
please consider
donating them to your
Community Garden.

We will collect them
from you if you ring
us.

Betty 0400 569 971



Visit the

DEAD FINISH MUSEUM



Oldest building in Beverley, built in 1872 as the "Wheatsheaf Inn"

Corner of Great Southern Highway and Morrison Street, Beverley WA

10 Furnished rooms of memorabilia of Beverley town and district.
Featuring the Beverley Room, a large collection of photos and history of
local organisations, school photos and identities.

ADMISSION ADULTS \$2

CHILDREN FREE WHEN ACCOMPANIED BY AN ADULT

Open 11.00am to 3.00pm Sundays or by appointment

Closed from December to early March

Parking available on Morrison Street. AVMCF Venue

Contact: bhsdeadfinish@gmail.com

0417 973 559 - Glenys

0427 411 881 - Joy

9646 1075 - Delys



Be very historic
Beverley WA
Be very you

EVENTS 2023

EVENT	DATE
BSA Community Christmas Party	December 23
CHRISTMAS	December 25
BOXING DAY	December 26
NEW YEARS DAY	January 01 2024

The flag was flown at half-mast on the Beverley Town Hall as a mark of respect to:-

- Remy Kessener (Ray)

Emergency Medical Information Book

This useful book contains all a person's information and medicals record needed if, or when, an ambulance is called, and they need to be transported to a hospital. The Emergency Medical Information Book Available for a \$2 donation at Beverley Farm Services.

Support your local groups

NEW PRICING

Do you want to advertise in the Beverley Blarney?

Advertising Rates

*As at 1 July 2023
Prices include GST*

Monthly Advertising

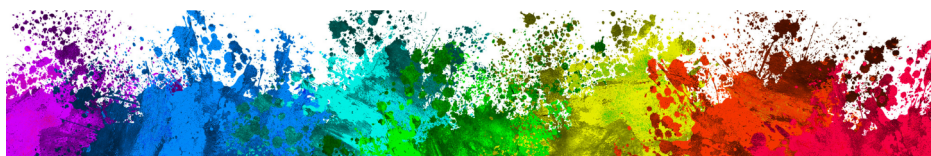
Full Page	185 x 268mm	\$195
Half Page	185 x 133mm	\$103
Quarter Page	92 x 133mm	\$50
Eighth Page	60 x 87mm	\$31
Trade Advert	60 x 45mm	\$9

Annual Advertising

Full Page	185 x 268mm	\$1,947
Half Page	185 x 133mm	\$1,027
Quarter Page	92 x 133mm	\$503
Eighth Page	60 x 87mm	\$310

Electronic format is preferable:

With a .doc (Word Document), .pdf (Adobe), .png or .jpeg extension



BEVERLEY BLARNEY

900 copies each month

Community notices are free of charge

**The deadline for the next
Beverley Blarney is 4pm**

Wednesday 13

December 2023

Contact our friendly Shire staff today
Shire of Beverley
PO Box 20 Beverley WA 6304

DISCLAIMER

The information in this publication is of a general nature as a service to the ratepayer. The articles included herein are not intended to provide a complete discussion of each subject. While the information is believed to be correct, no responsibility is accepted for its accuracy. No liability is accepted for any statements of opinion or any error or omission.

December 2023

SUNDAY	MONDAY	TUESDAY	WEDNESDAY	THURSDAY	FRIDAY	SATURDAY
					1 Croquet Golf Scroungers Op Shop	2 Community Markets Op Shop
3 Clay Targe Mass – 8.00am Sacred Heart Church	4 Beverley Historical Society Meeting Bridge Weight Watchers	5 BSA Alex & Evie Garden Club Mens Shed 8.30am Pool Closed Quilting	6 Active Farmers BeSASSy Group Golf Scroungers	7 Line Dancing	8 Active Farmers Croquet CWA Xmas Stall & Raffle Golf Scroungers Op Shop Recycle Bin	9 CWA Xmas Stall & Raffle
10 Mass – 8.00am Sacred Heart Church	11 Bridge Weight Watchers	12 Mens Shed 8.30am Quilting Pool Closed Stay Active	13 Active Farmers BeSASSy Group Croquet CWA Xmas Morning Tea Golf Scroungers BLARNEY DEADLINE	14 Line Dancing	15 Active Farmers Croquet Golf Scroungers Op Shop	16
17 Mass – 8.00am Sacred Heart Church	18 Bridge Weight Watchers	19 Mens Shed 8.30am Quilting Pool Closed Stay Active	20 Active Farmers BeSASSy Group Croquet CWA Meeting Golf Scroungers	21	22 Active Farmers CRC Bingo Croquet Golf Scroungers Recycle Bin SHIRE CLOSES	23 BSA Community Xmas Party
24 Mass – 8.00am Sacred Heart Church	25 CHRISTMAS DAY	26 BOXING DAY Pool Closed	27 Active Farmers BeSASSy Group Croquet Golf Scroungers	28	29	30
31 NEW YEARS EVE						